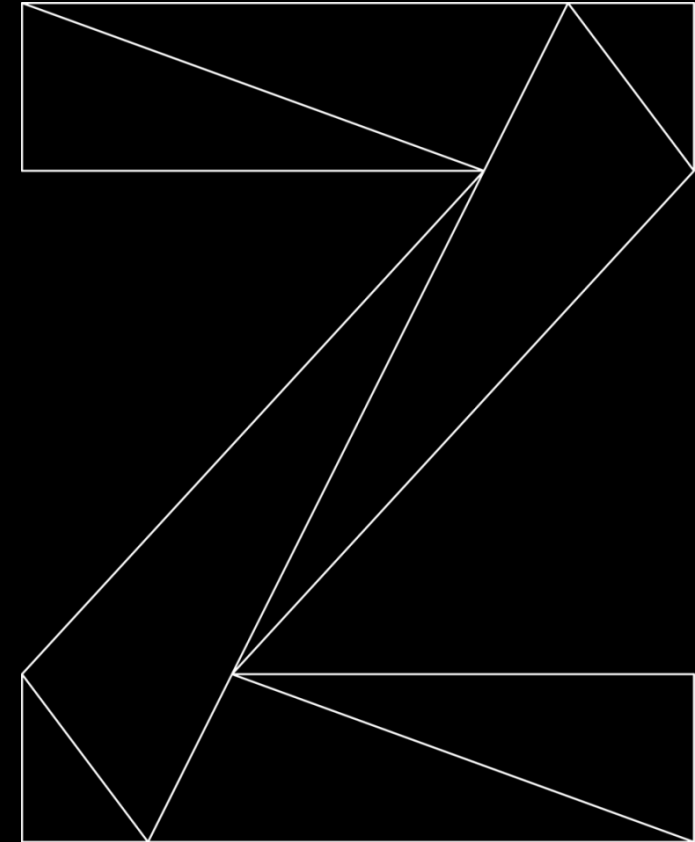


# What's New With OMEGAMON

June 4th 2020

Ernie Gilman– IBM Technical Specialist  
egilman@us.ibm.com



# Agenda

- OMEGAMON Family
- OMEGAMON What's New
- e3270ui
- PDS V2
- OMEGAMON for JVM
- OMEGAMON for CICS Update
- IZSME
- OMEGAMON Videos

# Some Key Dates

- **EOS Announced**

**IBM Tivoli Composite Application Manager for Transactions v7.3.x**  
**Tivoli Monitoring Services on z/OS v6.2.x**

- Announced February 2018 for effective date 30<sup>th</sup> April 2020

**IBM Tivoli OMEGAMON XE on z/OS monitoring feature for JVM, V5.3.0**

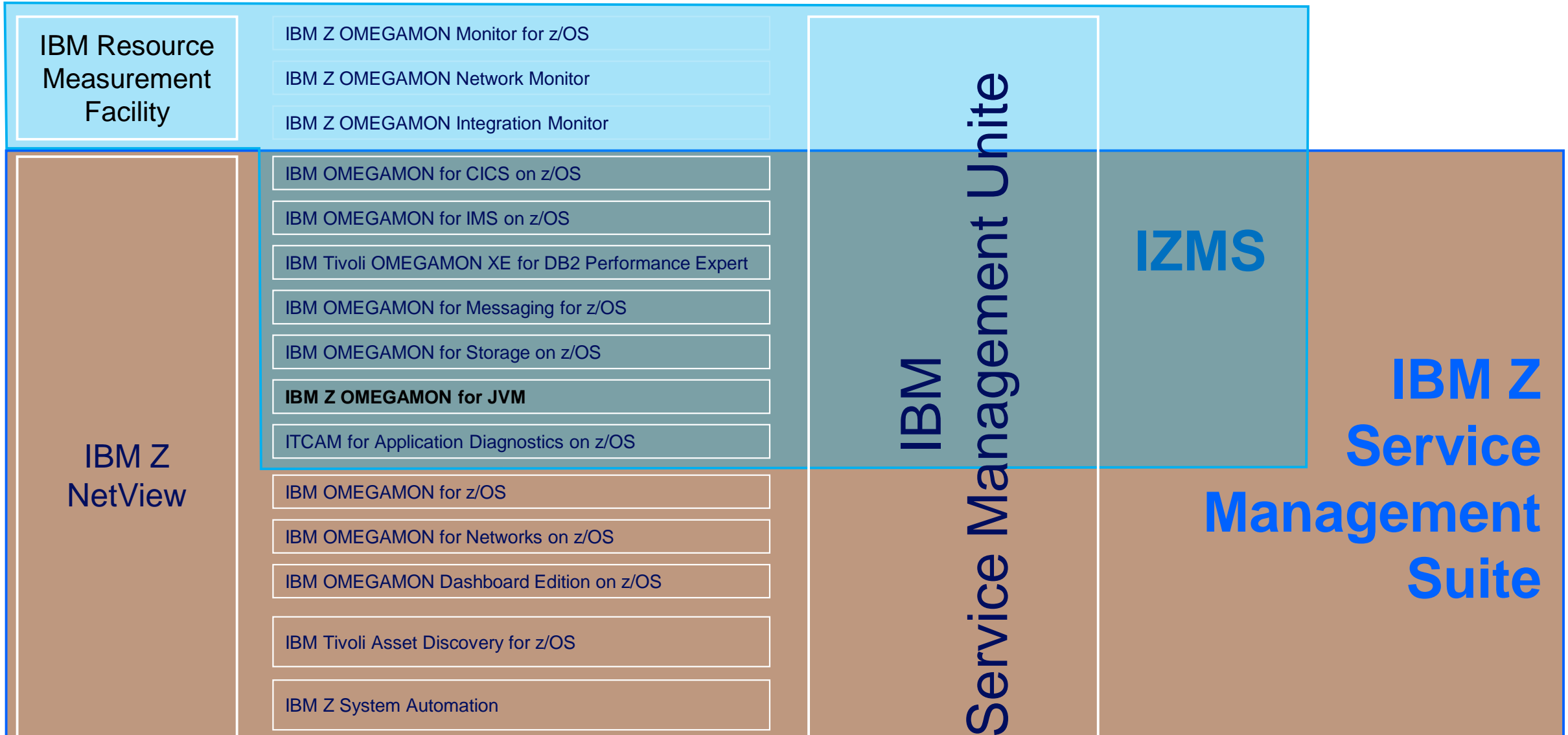
- Announced February 2020 for effective date 30<sup>th</sup> April 2021

- **EOM Announced**

**IBM OMEGAMON Performance Management Suite for z/OS V5.5**  
**IBM OMEGAMON for z/OS Management Suite V5.5**

- Announced October 2019 for effective date 6<sup>th</sup> January 2020

# IBM OMEGAMON Family



**IBM Z OMEGAMON Runtime Edition for JVM**

# OMEGAMON What's New

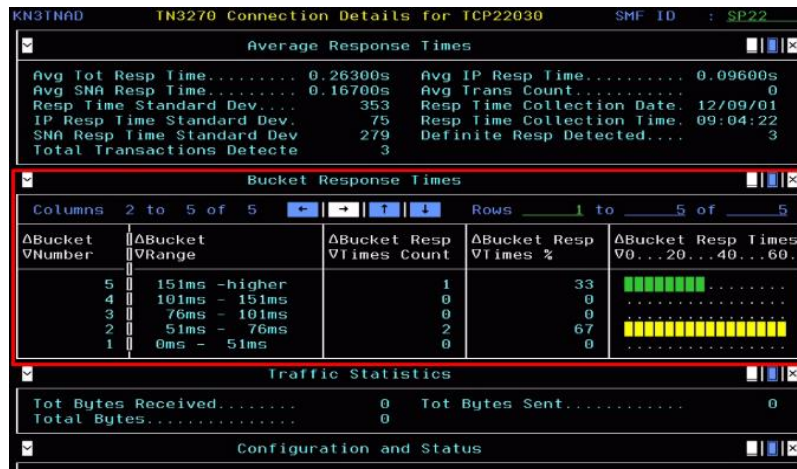
Updated 6/4/2020

OMEGAMON	Version	PTFs and Fix Packs	Continuous Delivery of Enhancements
z/OS	<a href="#">V5.5.0</a>	<a href="#">Fix Packs</a>	JES spool utilization, New Metrics, RMF historical data in TEP TEP Java certificate (expired Nov , 2018)
CICS	<a href="#">V5.5.0</a>	PTF UJ01722/UJ01596 FP3	OMEGAMON II (CUA) removed, CICSPLEX Default assignment Robust Task History Filtering
JVM	<a href="#">V5.5.0</a>		Robust z/OS Connect Monitoring, Performance Improvements Sub-capacity Licensing Runtime Edition Option, z/OS Connect details
Db2 PM	<a href="#">V5.4</a>		Support for DB2 for z/OS V12, Removal of the CUA interface
Db2 PE	<a href="#">V5.4</a>		Db2 PM + Integration with IBM Db2 AI for z/OS
Messaging	<a href="#">V7.5</a>		Configuration agent is withdrawn, MQ 3270 user interface removed Function in e3270ui
Networks	<a href="#">V5.5.0</a>	<a href="#">Fix Packs</a>	zERT Support, Enhanced VTAM monitoring, z/OS 2.4 currency support
IMS	<a href="#">V5.5.0</a>	<a href="#">PTF UA95681 (April 2018)</a> <a href="#">PTF UA96373 (June 2018)</a>	The commander data can now be archived New Managed Systems Status workspace
Storage	<a href="#">V5.5.0</a>		<a href="#">Realtime Dataset Metrics</a>
e3270ui	<a href="#">V7.5</a>	<a href="#">PTFs UA93322, UA83356,</a> <a href="#">UA82170, UA80299, UA76751</a>	Situation and Object Editors enhancements Memory Display/Zap workspace, New Initial workspace

# What is the TEP and e3270ui?

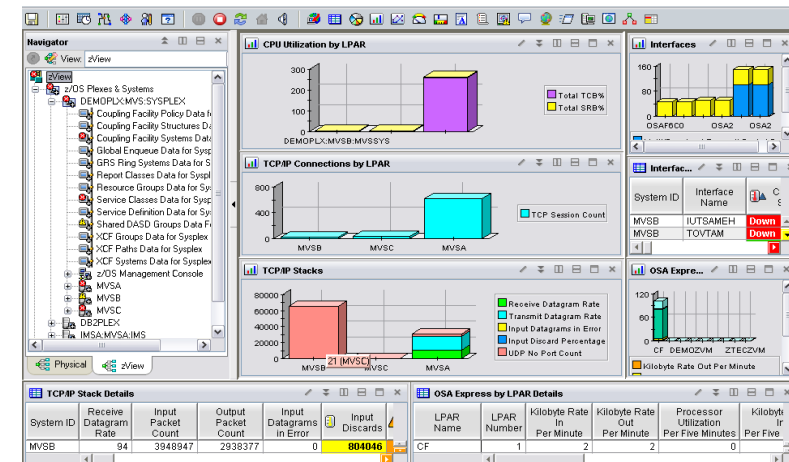
- **TEP** (Tivoli Enterprise Portal) GUI
  - Manage z/OS and distributed resources from a single interface.
  - Displays data in graphs, charts and table formats
  - View real time and historical data, at the same time
  - Workspaces, Situations, and Expert Advice
  - Configure, right from the TEP
  - History from PDS and TDW ( Tivoli Data Warehouse)
- **e3270ui**: New OMEGAMON 3270 interface
  - Revolutionary new 3270 interface that takes advantage of modern internet concepts
  - Common Feed as TEP (only OMEGAMON agents)
  - Out of box best practice cross enterprise cross OMEGAMON views
  - Supports up to large 62x160 screen sizes and intuitive mouse point and click
  - Only leverages PDS history ( Not TDW)

**e3270ui**



Classic here to stay  
Removed:  
CUA  
OMEGAMON II  
OMEGAVIEW

**TEP**



# New e3270 starting page

File Edit View Tools Navigate Help 06/04/2020 06:46:30

Command ==>  
KOBSS01A

OMEGAMON e3270UI First Workspace

This is a sample of the new first workspace replacing KOBSTART.  
It allows you to choose between viewing Events, or individual OMEGAMON agents. Select your desired tab below, and then select the checkbox to make it your first workspace when logging on.

Profile Name . : NETOP2

Make this my new First Workspace (Place cursor on Checkbox)

PREVIOUS NEXT DONE

---

Events z/OS CICS C/TG IMS DB2 MQ MFN STOR JVM

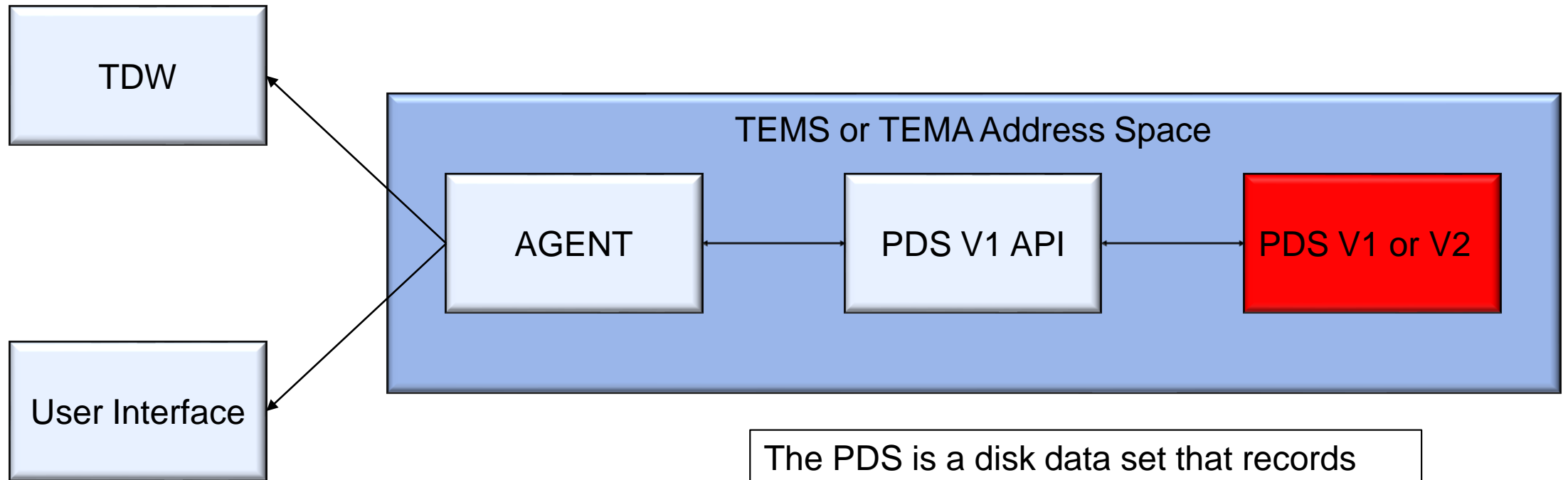
Tree name KOBSIT00 Options \_ ("/" for options)

---

Columns 2 to 9 of 10

◆Name	←	→	Jun04 History 02:47 (15min)	Jun04 06:32	Jun04 Recent 05:47 (5min)	Jun04 06:42	*	Current State
- Enterprise Status								
+ CICS								
+ CICS TG								
+ DB2								
+ IMS								
+ Integration Bus								
+ JVM								
+ MQ								
+ Network								
+ Storage								
+ z/OS								
+ TEMS								
+ Warehouse								
+ z/VM and Linux								

# What is the Persistent Data Store (PDS)?



The PDS is a disk data set that records near term history and includes the software that enables the agent to read from or write to the data set.



## **Why Change PDS ?**

- TEMS address space running out of virtual storage
- PDS V1 could be CPU intensive in some cases
- PDS V1 datasets 'fragile'

## **Goals of PDS V2**

- Reduce use of virtual storage below the bar
- Reduced CPU
- no changes required to utilize PDS V2
- Minimize changes to Parmgen
- Eliminate user maintenance of PDS datasets

# PDS V2 Differences

## **PDS V1**

- Heavy user of 31 bit virtual storage
- Must be allocated in track managed space
- Uses sequential bsam datasets
- When a dataset is full, it rolls over to the next dataset
- Batch job spun off when dataset is full

## **PDS V2**

- Uses virtual storage above the bar
- May be allocated in cylinder managed space
- Uses VSAM Linear Datasets (LDS)
  - Uses low level VSAM interface
- Initial datasets defined automatically 8 LDS per application
- LDS is deleted and defined from within TEMS

# PDS V2 Data Store Allocation

- If LDS is in a Data Class that includes the Extent Constraint Relief attribute
  - LDS is allocated based on the values in the *KaaAL* member of RKANPARU where *aa* is the application ID
  - LDS will take a secondary extent of 10% of initial allocation as needed to contain the history for a single day
  - Provides the ability to take over 7000 extents across multiple volumes, if needed
- If data is being migrated from PDS V1 to PDS V2
  - On first start-up of TEMS, if there is data in the PDS V1 data store, it is migrated to the PDS V2 data store (done for current day and prior three days only)
  - Primary LDS allocation will be the size necessary to contain the data that has been migrated
  - LDS allowed three extents of 10% of primary allocation to contain a day of historical data
- Else
  - LDS primary allocation is based on *KaaAL* member of RKANPARU
  - LDS allowed three extents of 10% of primary allocation to contain a day of historical data

# Configuring PDS V2

- No changes to PARMGEN process
- PDS V2 will be used automatically during TEMS start-up if requisites are met
- PDS V1 datasets may be deleted after migration, low level qualifiers:
  - RKppDS\*  
where pp is the product identifier such as S3, M5, etc.
- Highly recommended that ACS routines be coded to place the LDS datasets into a Data Class that provides Extent Constraint Removal
- Support tools
  - Four levels of dynamic tracing
  - Undocumented parameter to turn off PDS V2 at TEMS startup
- Packaged as part of the OB component (HKOB750), APAR OA58158
- Migration of data from PDS V1 occurs the first time that PDS V2 is enabled

# IBM Z OMEGAMON for JVM, V5.5.0

- Two editions

Sub-capacity, instance-based edition

## **IBM Z OMEGAMON Runtime Edition for JVM, V5.5.0**

MSU-base unlimited edition

## **IBM Z OMEGAMON for JVM, V5.5.0**

- 24-bit, and 64-bit virtual storage monitoring
- Improved Garbage Collection/Heap utilization option
- Collector **performance** improvements
- Completed JVM history (“batch job history”)
- z/OS Connect enterprise overview
- z/OS Connect summary history

# OMEGAMON for CICS on z/OS update

OMEGAMON for CICS on z/OS PTFs UJ01722 and UJ01596, together with 5.5.0-TIV-KC5-FP0003 delivered significant improvements for the following areas:

- **Default CICSplex assignment**
- **Task History Filtering**
  - New CICSplex navigation
  - New CICSplex resource views
  - OMEGAMON commands
  - User Excluded tasks
  - USREVNT1 displays

# New Default CICSplex assignment by LPAR

If no CP/SM defined CICSplex it defined then:

**Previous default:** Places all Regions in the **Sysplex** into the CICSplex OMEGPLEX.

**New default:** Places all Regions in the **LPAR** with SMFid as the CICSplex name

**default CICSplex processing**

select preferred option

rule defi

columns 2 to 6 of 7

CICSplex Name	Job Name	SYSPlex Name	SMF Identifier	VTAM Applid	VTAM Generic Applid
OMEGPLEX	*	*	*	*	*

APPLY CANCEL

# CICS Task History Filtering

With PTFs UJ01722 and UJ01596

## Previous Filters

```
Transaction ID      EQ.....:
User ID            EQ.....:
Terminal ID        EQ.....:
ABEND code         EQ.....:

Response Time      GE.....:
CPU Time           GE.....:
Storage HWM        GE.....:
```

## New Task History Filters

```
Records to scan    10000
Response time GE   _____
Storage HWM . GE   _____
DL/I . . . . GE   _____ +
ADABAS . . . . GE   _____ +
IDMS . . . . GE   _____ +
MQ . . . . GE     _____ +

Between _____ on _____ and _____ on _____

Inclusion criteria      Exclusion criteria
Tran ID . . EQ _____ +   Tran ID . . EQ _____ +
Terminal ID EQ _____ +   Terminal ID EQ _____ +
User ID . . EQ _____ +   User ID . . EQ _____ +
Abend code EQ _____
```



# IBM Z Service Management Explorer – IZSME

## Revolutionizing TEP

### Goals:

- Remove any dependency of Java for end users
- Position for the future by leveraging open source Zowe
- Initial Release: For end-users only (non-Admins)
- Similar Layout and Navigation

TEP

Severity	Status	Owner	Name	Display Item
Critical	Open		KHD_Error_Critical	CTX_ODBCError
Warning	Open		KM5_No_Sysplex_DASD_Filter_Warn	
Warning	Open		KM5_Weak_Plex_DASD_Filter_Warn	
Critical	Open		new_sit_channel_is_stopped	

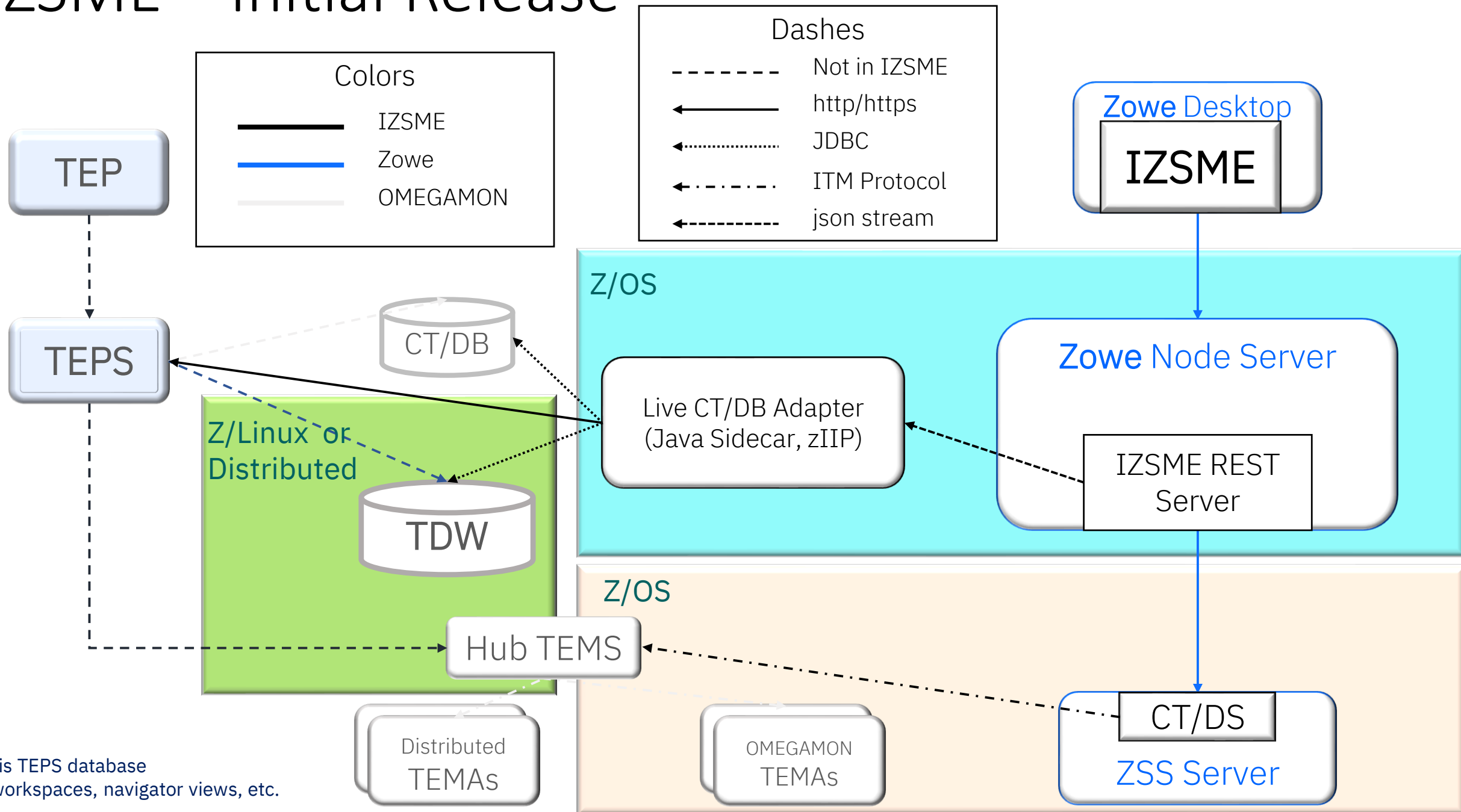
Status	Name	Display Item	Origin Node
Open	KHD_Error_Critical	CTX_ODBCError	WALDEVOMPEIVT01:Wareho
Open	KHD_Error_Critical	CTX_ODBCError	WALDEVOMPEIVT01:Wareho
Open	KHD_Error_Critical	CTX_ODBCError	WALDEVOMPEIVT01:Wareho
Open	KHD_Error_Critical	CTX_ODBCError	WALDEVOMPEIVT01:Wareho
Open	KHD_Error_Critical	CTX_ODBCError	WALDEVOMPEIVT01:Wareho
Open	KHD_Error_Critical	CTX_ODBCError	WALDEVOMPEIVT01:Wareho
Open	KHD_Error_Critical	CTX_ODBCError	WALDEVOMPEIVT01:Wareho
Open	KHD_Error_Critical	CTX_ODBCError	WALDEVOMPEIVT01:Wareho
Open	KHD_Error_Critical	CTX_ODBCError	WALDEVOMPEIVT01:Wareho
Open	KHD_Error_Critical	CTX_ODBCError	WALDEVOMPEIVT01:Wareho

Severity	Status	Owner	Name	Display Item
Critical	Open		KHD_Error_Critical	CTX_ODBCError
Warning	Open		KM5_No_Sysplex_DASD_Filter_Warn	
Warning	Open		KM5_Weak_Plex_DASD_Filter_Warn	
Critical	Open		new_sit_channel_is_stopped	
Critical	Open		KHD_Error_Critical	CTX_RPCError
Critical	Open		KSY_Overload_Critical	

Severity	Status	Owner	Name	Display Item	Source	Impact	Opened	Local Timestamp	Type	UUID
Open	KM5_aliona_3									
Open	KHD_Error_Critical									
Open	KHD_Error_Critical									
Open	KHD_Error_Critical									
Open	KHD_Error_Critical									
Open	KHD_Error_Critical									
Open	KHD_Error_Critical									
Open	KHD_Error_Critical									
Open	KHD_Error_Critical									
Open	KHD_Error_Critical									

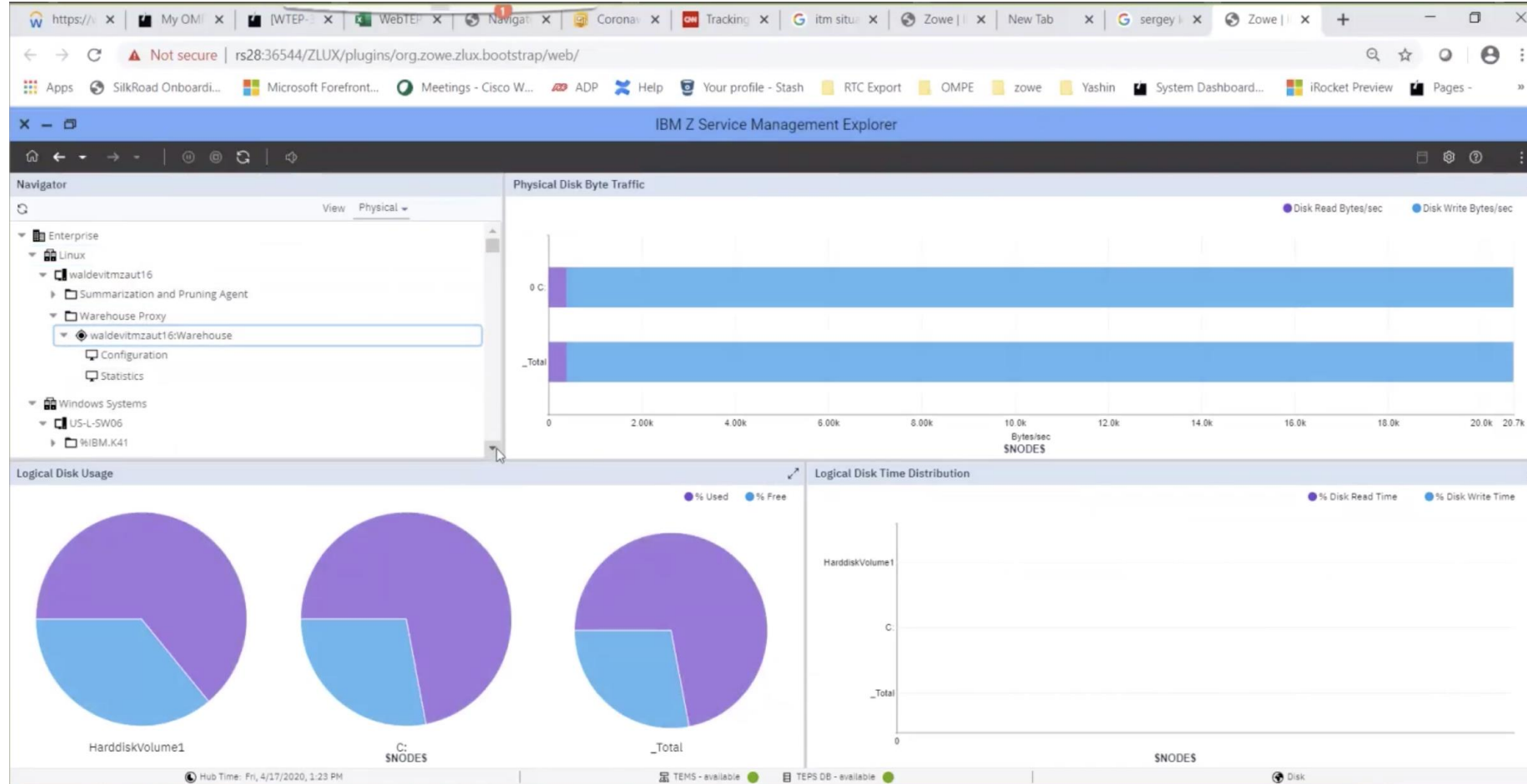
**IZSME**

# IZSME – Initial Release



**CT/DB** is TEPS database  
Holds workspaces, navigator views, etc.

# IBM Service Management Explorer



# Temporary Limitations

- “Read-only”
  - No “administrative” capabilities, such as workspace or situation editing and user administration etc.
- No Situation Operator actions
  - Can see events, Situation Event Console, but no Acknowledge, Take Action, Event Details
- No “extensions”, such as
  - MQ “special actions”, filtering
  - Storage Toolkit
  - Mainframe Networks workspace filtering
- Miscellaneous Display Limitations
  - Gauges, some topologies, etc.

## Statement Of Direction

IBM intends to enhance IZSME via continuous delivery to incorporate all of the key functions of the TEP and allow current OMEGAMON TEP users to switch completely to IZSME, eliminating the requirement for users to install and maintain Java on their workstations.

# Zowe, Node.js, Browser Prereqs for IZSME

- **Zowe**
  - ✓ Zowe version 1.10 or higher. Applying PTFs U001939 and U001940 will upgrade Zowe to version 1.10.0.
  - ✓ Download Zowe :[https://www.ibm.com/support/knowledgecenter/SSVHRS\\_1.0.0/download.html](https://www.ibm.com/support/knowledgecenter/SSVHRS_1.0.0/download.html)
- **Node.js**
  - ✓ 12 or later
- **Browsers**
  - ✓ Chrome V66 or later
  - ✓ Mozilla Firefox V60 or later
  - ✓ Microsoft Edge V17 or later
- **IBM Support for Zowe and Node.js as related to IZSME**
  - ✓ At no additional charge
  - ✓ IBM Z Service Management Explorer Support is delivered under Tivoli Management Services V6.3.1

# Recent PARMGEN updates

2020

March 2020 update UJ01973 (OA59012):

1. OMEGAMON JVM v5.5.0 release support
2. Multi-tenancy configuration ON/OFF parameter support
3. Remove obsolete PARMGEN CPU/hardware informational messages

1Q20 PTF UJ02038 (OA58817):

1. KCIPARSE performance improvements

1Q20 PTF UJ02017 (OA58861):

1. OM Networks Configuration updates
2. Multi-tenancy and cryptography support
3. E3270UI Security and Multi-tenancy updates
4. OM Integration Monitor syntax error fix

2019

4Q19 PTF UJ01311 (OA58363):

1. NetView rebranding
2. Passphrase PARMGEN support
3. EAV: RC=25 during KCIJSEC PARMGEN run fix.

4Q19 PTF UJ01287 (OA58439):

1. PARMGEN Codepage Problem for Messaging
2. Copying error in configuration OMEGAMON Storage

# OMEGAMON Video Links

[Getting started with Enhanced 3270UI](#)

[Building Workspaces 101 for the Enhanced 3270UI](#)

[Monitoring z/OS with the Enhanced 3270UI](#)

[Modernizing your OMEGAMON Environment: Monitoring CICS with the Enhanced 3270 UI](#)

[Monitoring DB2 using OMEGAMON Enhanced 3270UI](#)

[Modernizing your OMEGAMON Environment: Monitoring MQ and Integration Bus with the Enhanced 3270UI](#)

[Monitoring MQ in Enhanced 3270UI V750 Update](#)

[Monitoring JVM with the Enhanced 3270UI](#)

[OMEGAMON Architecture Overview for a Modernized OMEGAMON Environment](#)

[Diving Deeper with Enhanced 3270UI](#)

[Securing your Enhanced 3270UI Deployment](#)

[Modernized OMEGAMON Situation Alert Creation on the Enhanced 3270UI](#)

[Modernizing your OMEGAMON Environment: Monitoring Storage with the Enhanced 3270UI](#)

[OMEGAMON Enhanced 3270UI Monitoring Mainframe Networks](#)

[Dashboard Edition Situation Status Tree Overview for a Modernized OMEGAMON Environment](#)

[Building Effective Dashboard Views Using OMEGAMON and the Tivoli Enterprise Portal](#)

[New in SMU V1.1.4 -- OMEGAMON for Storage dashboards](#)