

# Minnesota Spoke Splash

## Welcome!

The Minnesota Spoke Splash is the monthly newsletter of the Minnesota NETT Hub. If you know of others who should receive this newsletter directly, if you would like to change your email subscription, or if you have comments or suggestions, please submit them to Marinda Bland ([blan0181@umn.edu](mailto:blan0181@umn.edu)).

## CHANCE v. POINT Trial: What is the difference?

Since February 2013, when the CHANCE trial data was released, there have been a number of articles about the two trials. Here is a quick review of the differences and perhaps talking points for subjects and/or families.

CHANCE was a randomized controlled trial conducted in China. The healthcare standards are much different in China and the subtypes of stroke are different. This population metabolizes the drug clopidogrel differently which may limit its effectiveness.

CHANCE trial tested the hypothesis that a brief period of dual antiplatelet therapy given to patients with a high risk TIA or minor ischemic stroke would reduce the rate of early recurrent stroke in these patients.

POINT is a randomized clinical trial seeking to test the same hypothesis. The trial will be conducted at 150 U.S. Sites and approximately 60 international sites.

Both trials use aspirin plus study drug (clopidogrel or placebo) daily for 90 days.

Differences: POINT uses 600 mg of clopidogrel/placebo as a loading dose at randomization (twice the dosage used in the CHANCE trial). POINT recommends 50-325 mg of Aspirin daily v. CHANCE recommendation of 75 – 300 mg of Aspirin daily.

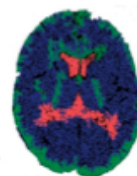
Continued on page 2



UNIVERSITY  
OF MINNESOTA  
**Driven to Discover<sup>SM</sup>**

## Contents

Page 1	Welcome
Pages 1-2	CHANCE v. POINT
Page 2	ProTECT
Page 3	POINT
Page 4	SHINE
Page 5	NETT Contacts



**Neurological  
Emergencies  
Treatment  
Trials**

Continued from page 1

Findings from CHANCE: Risk of recurrent stroke was significantly lower in the dual antiplatelet arm without a significant increase in serious bleeding events.

The risk of recurrent stroke in the first 90 days was 32% lower with absolute reduction ~ 3.5%. The rate of hemorrhagic stroke was the same (0.3%). The risk of any bleeding was 2.3% in the dual antiplatelet group v. 1.6% with aspirin alone and the risk of severe bleeding was about 0.2% in both groups. (Source: neuroicudoc, Alexander Flint)



## ProTECT

### Progesterone for the Treatment of Traumatic Brain Injury

One of the tricky aspects of ProTECT eligibility is getting an accurate GCS. Anytime you can quickly checking in with EMS (upon arrival) to get the 3 elements confirmed: eyes, verbal and motor, we can be assured that the documentation will match up for eligibility. With the delay in receiving the final EMS run sheet report, it is very important to verify the 3 GCS elements in person if at all possible.

Last week we hosted study monitors Andrace Deyampert (all 3 sites) and Bethany Lane (Regions only). They reviewed all enrollments through 6 months at all three ProTECT sites in preparation for the datalock in September. They set the bar high for themselves with plans to review all patients enrolled before March 1, 2013 from enrollment to 6-month visit.

The visit went very well at all sites with a shout out to Regions for their exemplary review. Bethany said the visit “made her month” and she was very impressed. Thanks in advance to all coordinators for quickly responding to the DCR’s. They will all need to be closed out by the end of August at the latest.

ProTECT Minnesota Spokes Enrollment Summary		
Spoke	Active	Enrollments
Hennepin County Medical Center	09/03/2010	18
Regions Hospital	11/04/2010	51
North Memorial Medical Center	09/02/2011	7

ProTECT National Hub Enrollment Ranking			
Total Enrollment Nationwide:	801	Enrollment Goal:	1140
Rank	Hub	Enrollment	
1	Arizona	85	
2	Emory	83	
3	Cincinnati	79	
4	Minnesota, Stanford	76	

# POINT



## Platelet-Oriented Inhibition in New TIA and minor ischemic stroke Trial

The sponsor sent their newsletter earlier this week called POINTERS. If you did not receive this email, please let us know. One quick takeaway message is that while enrollment continues to be consistent, it is still not as robust as the sponsors would like. With the release of the CHANCE trial data, they were hoping that enrollment would accelerate.

On the other hand, it has been mentioned recently that UCSF (the sponsor) is seeking funding to increase the total enrollment target from 4150 to 5860. The larger recruitment goal will hinge on the availability of additional funding for the trial.

Thanks again to United for their latest enrollment in July.

We are looking forward to activating both Abbott Northwestern Hospital in Minneapolis and University of Kansas Medical Center in Kansas City, KS in the next month!

### POINT Minnesota Spoke Enrollment Summary

Spoke	Active	Enrollment
Hennepin County Medical Center	June 2010	19
UMMC - Fairview	November 2010	10
Fairview Southdale Hospital	July 2010	8
Regions Hospital	January 2012	27
Ridgeview Medical Center	February 2012	1
United Hospital	August 2012	3

### POINT National Hub Enrollment Ranking

<b>Total Enrollment Nationwide: 1581</b>		<b>Total Enrollment Goal: 4150</b>	
Rank	Hub	Enrollment	
1	UPenn	141	
2	Wayne State	83	
<b>3</b>	<b>Minnesota</b>	<b>68</b>	
4	Cincinnati	67	



# SHINE

## Stroke Hyperglycemia Insulin Network Effort

There are no new issues to report. This is another study where recruitment is behind its goal. The glucose eligibility requirement has limited enrollments (> 150 for unknown T2DM and > 110 for known T2DM). The measurement has to be done by POCT and not use serum glucose results.

### SHINE Minnesota Spoke Enrollment Summary

Spoke	Active	Enrollment
UMMC - Fairview	December 2012	3
HCMC	March 2013	0

### SHINE National Hub Enrollment Ranking

Total Enrollment Nationwide: 178		Total Enrollment Goal: 1400	
Rank	Hub	Enrollment	
1	Emory, NYP	23	
3	Kentucky	14	
4	Temple	13	
5	Ohio State	10	
6	Texas	9	
7	Pittsburgh/Cincinnati	6	
9	Maryland	4	
<b>10</b>	<b>Minnesota</b> , Wisconsin, Stanford	<b>3</b>	

## NETT Contacts

### University of Minnesota Hub Staff

Michelle Biros, MD, MS	Hub Principal Investigator
Mustapha Ezzeddine, MD	Hub Co-Principal Investigator
Kathleen Miller, BSN, CCRC	Project Manager
Julie Scherber, RN	Research Coordinator (SHINE)
Dave Hildebrandt, RN	Research Coordinator (ProTECT)
Mindy Rumbolz, RN	Research Coordinator (POINT)
Michelle Lambert, RN	On Call Coordinator
Raven Loya, RN	On Call Coordinator
Berline Pierre-Louis	On Call Coordinator
Marinda Bland	Administrative Assistant

### Spoke Contacts

#### ProTECT III

##### **Principal Investigator**

Gaylan Rockswold, MD  
David Dries, MD  
Eric Irwin, MD

##### **Primary Study Coordinator**

Sandi Wewerka  
Patty Reicks, RN

##### **Spoke**

Hennepin County Medical Center  
Regions Hospital  
North Memorial Medical Center

#### POINT

##### **Principal Investigator**

Mustapha Ezzeddine, MD  
Mustapha Ezzeddine, MD  
Aaron Burnett, MD  
Alexander Zubkov, MD  
David Larson, MD  
David Larson, MD  
Paul Schanfield, MD  
Nick Itzin, MD  
Mark Young, MD  
Michael Abraham, MD

##### **Primary Study Coordinator**

Sandi Wewerka  
  
Bridget Ho, CCRC  
Erica Chopske, RN, CCRC  
Jennifer Fease, CCRC  
Shannon Gifford

##### **Spoke**

University of Minnesota Medical Center  
Hennepin County Medical Center  
Regions Hospital  
Fairview Southdale Hospital  
Ridgeview Medical Center  
Two Twelve Medical Center  
United Hospital  
Essentia Health – St. Mary’s  
Abbott Northwestern Hospital  
University of Kansas Medical Center

#### SHINE

Mustapha Ezzeddine, MD  
Mustapha Ezzeddine, MD

University of Minnesota Medical Center  
Hennepin County Medical Center