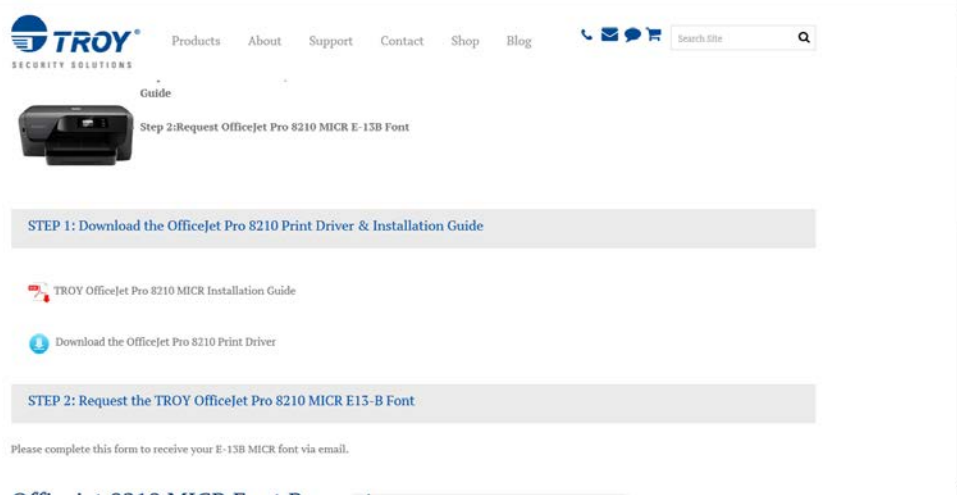


## TROY OfficeJet Pro 8210 Printer Installation Guide

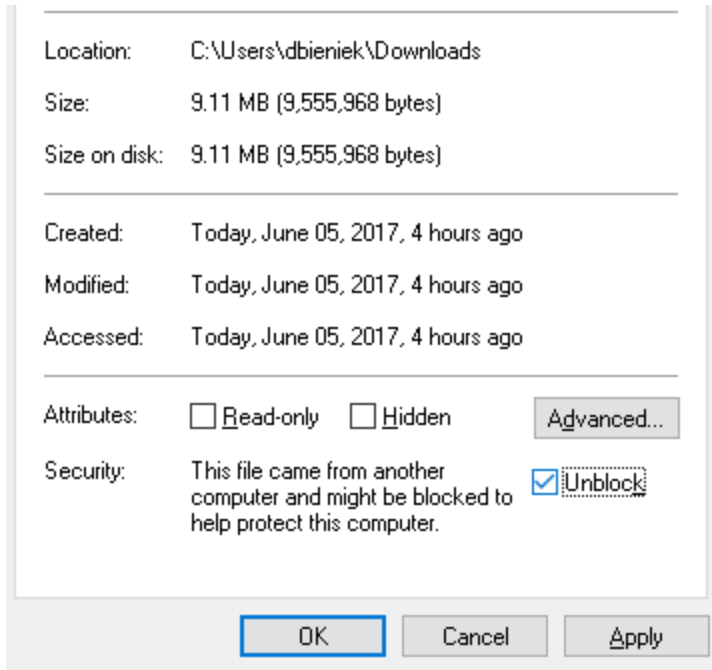
---

1. Please begin by browsing to TROY's website in order to obtain the most up-to-date version of the installer. You can find it by [CLICKING HERE](#) or by entering the following URL into your browser:  
<http://www.troygroup.com/8210micr-series>
2. Download the **Installation Guide** and **OfficeJet Pro 8210 Installer Package** executable

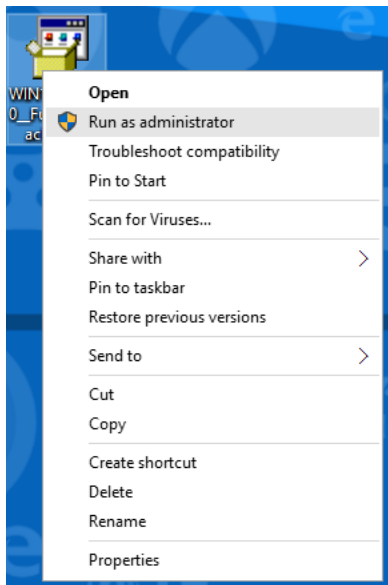


Once you have obtained the software from the TROY website, please move it to a location on your computer other than the **Downloads** directory. Many anti-malware solutions will prevent applications from running in the Downloads directory for security purposes

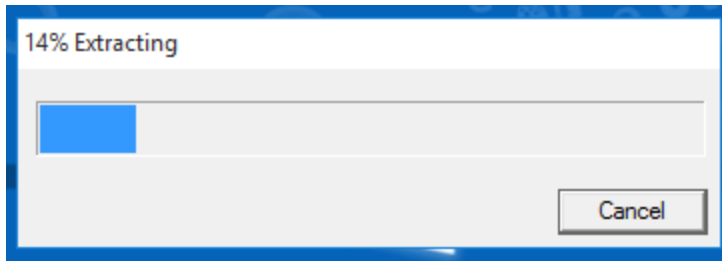
3. After you relocate the self-extracting executable, it is important to "Unblock" the file in Windows. Generally, any executable file downloaded from the Internet will be automatically blocked by default in modern versions of the Windows operating system. To do this, **right click** on the executable file and select **properties**. Once the file properties window is open, select **unblock** as demonstrated in the screenshot below.



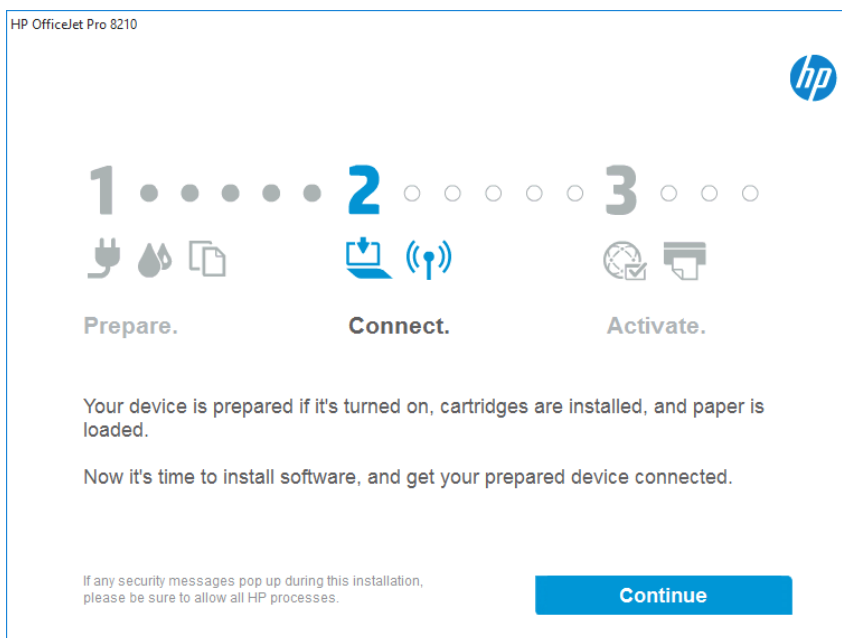
4. You should now launch the installer as an elevated process under **Windows User Account Control**. To do this, **right click** on the executable file and select **Run as administrator**. This will allow the installer to run with administrative rights and complete the installation process.



5. The self-extracting executable installer will extract the installation files to a temporary location on your local hard disk drive. This can take several minutes, so please be patient while the installer gathers all of the files needed to install your new device.



6. After it has extracted the files, an installation executable will be launched automatically. **You should now prepare your device by inserting the cartridges, loading the paper trays and connecting it to an appropriate power source.**
7. After you've finished preparing the device, please select the **Continue** button to proceed with installation.

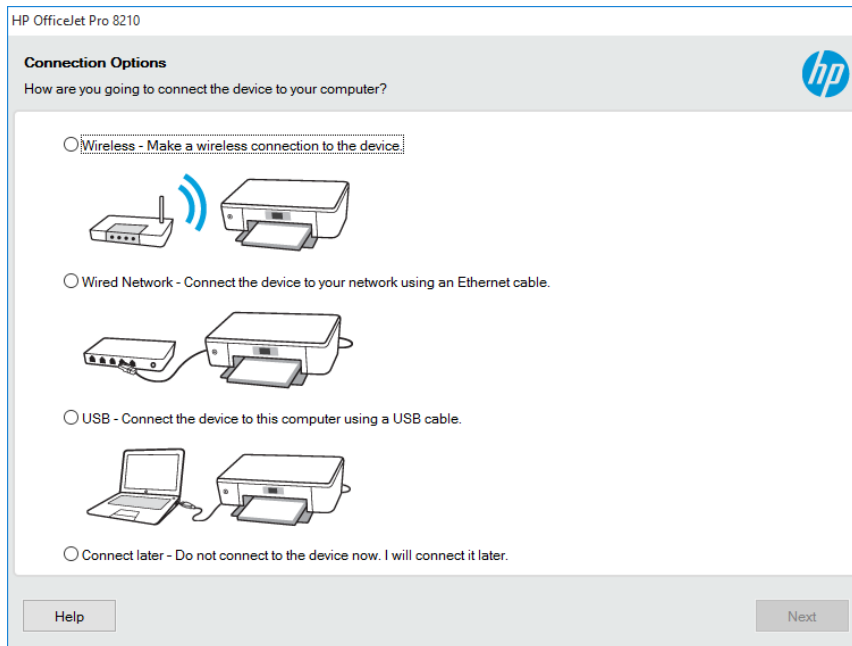


8. You can now select any additional software or documentation to install. If you just require a default installation, you can leave these settings unchanged and select **Next**.
9. Please review the EULA (end user license agreement) and select the checkbox if you agree to the license terms. After agreeing to the license terms, select **Next**.
10. The installer will now complete the installation of required components as well as any additional software/documentation you selected during this process. Please wait while the installer completes these operations.

11. After installing required and optional components, the installer will setup and configure your printer. There are three methods to connect your new printer, including:

- **USB** – Connects the device directly to your computer with a USB cable
- **Wired Ethernet** – Connect to the device through your network using an Ethernet cable
- **Wireless Ethernet** – Connect to the device wirelessly

The option you select will depend on your specific setup requirements and environment.



12. **USB Installation** – to install the printer directly to your computer using a USB cable, please select the **USB** radiobutton and connect the USB cable to the printer. The female end can be attached to any available USB port on your computer. **Press Next to continue...**

**Wired Ethernet** – to install the printer on your LAN, so it is available on any system connected to the network, please select the **Wired Network** radiobutton. You will need to connect an Ethernet cable to your printer and plug it in to your switch/router. You should provide the installer the IP address assigned by DHCP or the hostname as shown on your printer's display. **Press Next to continue...**

*Note: Using your device's hostname will allow you to connect to this device even when your IP address changes.*

**Wireless Ethernet** – to connect wirelessly to your printer, select the **Wireless** radiobutton and press the **Wireless** button on your printer. This will provide wireless connection information (IP address/hostname) on the display screen of your printer. **Press Next to continue...**

13. Your TROY OfficeJet Pro 8210 is now installed and properly configured. You should attempt to send a page to the printer to ensure it is working correctly. To do this, please open the **Control Panel** and select **Devices and Printers**. Find your new TROY 8210 printer, and right click **Printer Properties**.

14. From the object's Printer Properties window, click the button labeled **Printer Test Page** to ensure your device is communicating with your system.
15. To request the TROY E-13B InkJet MICR font, go to <http://www.troygroup.com/8210micr-series.html> complete the Request OfficeJet Pro 8210 MICR Font form, and click Submit. TROY support will review the request and email you the required TROY E-13B InkJet MICR TTF font to be used with your OfficeJet 8210 printer  
Font request form: <http://www.troygroup.com/8210micr-series>
16. Once you've obtained the **TROY E13B.ttf**, save the file to a location on your computer's local disk, and **right click** the .ttf file. From the right-click context menu, you should select **Install**. This will install the font into your Windows Fonts system directory and allow you to utilize the MICR font within your check printing application.