

TRINSICTM SERIES

Vinyl Windows and Patio Doors

Architectural Manual



Instructions on how to use this manual:

This document has been designed for easy navigation and to quickly click to the section you need. Here's some important tips on using this document:

- Any item printed in **red**, will click through to the corresponding item.
- Click to any item in the Table of Contents on **page 3**. Click on the Milgard logo at the top of any page to return to the Table of Contents - FULL MANUAL ONLY.
- From each section's Quick Links page, click to any Drawing listed.
- From any Drawing page, click the "Go Back to Quick Links" box on the bottom right of the page to return to the list of drawings.
- Click on the links on the bottom of the page to go to Revit, SketchUp . PDF and .DWG files. Please note that you must have internet access for these links and you will be re-directed to the Milgard site.
- This document can also be navigated from Adobe Acrobat Bookmarks.

Revit, SketchUp, .PDF and .DWG files can be accessed
at **milgard.com** or clicking here:

Technical Resources

Contents

COMPONENTS _____ 4

Frame _____	4
Nail-On Fin _____	4
Weep System _____	4
Glazing Material _____	4
Vent Panel _____	4
Weatherstripping _____	5
Door Roller Assembly _____	5
Locking Assembly _____	5
Screen _____	5
Energy Packages _____	5

OPTIONS _____ 5

Grids _____	5
Glass _____	5

Window and Door Hardware _____ 6

Premium Exterior Vinyl Finishes _____ 7

Full Lifetime Warranty _____ 8

Awning Window _____ 9

Configurations _____	10
Minimum/Maximum Sizes _____	10
Available Frame Styles _____	10
Drawings - Quick Links _____	11

Casement Window _____ 31

Configurations _____	32
Minimum/Maximum Sizes _____	32
Available Frame Styles _____	32
Drawings - Quick Links _____	33

Horizontal Sliding & Double Horizontal

Sliding Window _____ 51

Configurations _____	52
Minimum/Maximum Sizes _____	52
Available Frame Styles _____	52
Drawings - Quick Links _____	53

Picture and Radius Window _____ 78

Configurations _____	79
Minimum/Maximum Sizes _____	79
Available Frame Styles _____	79
Drawings - Quick Links _____	80

Single Hung Window _____ 103

Configurations _____	104
Minimum/Maximum Sizes _____	104
Available Frame Styles _____	104
Drawings - Quick Links _____	105

Sliding Patio Door _____ 130

Configurations _____	131
Minimum/Maximum Sizes _____	131
Available Frame Styles _____	131
Drawings - Quick Links _____	132

About Trinsic™ Series

The Trinsic series vinyl window has the energy efficiency and low maintenance of vinyl with sleek, contemporary design and even sightlines.

The result is a window with maximum glass area. Available in white, tan, and clay (select regions), as well as premium painted exteriors. The windows will maintain their color and shape and can be constructed to your exact size specifications, subject to review.

COMPONENTS

Frame

Frame components are made from high performance polyvinyl chloride, available in White or Tan, with Clay available in select regions or premium painted upgrade window frames. Trinsic Series is designed to offer a sleek appearance, ideal for contemporary homes or whenever maximum glazing area and even sight lines are desired. Mitered corners are precision welded resulting in an air and water tight seal.

Standard window frame depth is 2-7/8", ideal for both new construction and use as a replacement window.

Nail-On Fin

A 1-1/16" pre-punched nail flange extends around the perimeter frame, securing the window in rough openings and acting as a part of the flashing system. The nailing fin may be removed as needed

for block frame applications. Fin setbacks are available in 1-3/8" from outside of frame; also in 1" for our SW locations using 3 coat stucco applications (not available at all locations).

Weep System

Hollow sill construction and offset weep holes that release any accumulated moisture from track and help prevent blow back, or water seeping to the interior caused by a combination of wind and rain.

Glazing Material

AAMA approved glazing tape adheres glass to the fixed panel frame which seals and cushions the glass. Rigid vinyl setting blocks are used to support the unit above the sill, preventing glass slippage. Extruded vinyl glazing (snap-in) bead is applied around the exterior edge.

Glass insulating dual glazed panes are butyl sealed for energy efficiency. Specialty glass options are available upon request.

Vent Panel

The vent panel has an "L" shaped lip that fully interlocks with the meeting rail, adding security and preventing air and water penetration. Its roller assembly rides on a monorail track for easy operation and durability. This raised track in the frame sill helps keep the vent panel free from interference by foreign particles that may collect in the sill.

Weatherstripping

Silicone-treated water-repellent polypropylene fin seal weatherstripping provides a durable, weather tight seal. This weatherstripping is installed in an integral, continuous keyway around three sides of the vent panel and interlock.

Door Roller Assembly

Self-lubricating, wear resistant, dual nylon rollers provide flexible, free-wheeling, smooth and silent operation. The adjustable rollers are engineered for reduction of friction and elimination of torque on the vent frame.

Locking Assembly

A SmartTouch® window lock mechanism provides security and a tighter seal. The lock engages when the window is closed.

Screen

Screen frames are cambered aluminum, reinforced with rigid plastic corner clips. Screens come standard with matching exterior frame color.

The fiberglass charcoal screen mesh is strong, durable and easy to replace. Two plastic pulls located on the screen allow you to install from inside or outside of house.

Energy Packages

Milgard adheres to ENERGY STAR® v6 requirements to meet or exceed U-Factor and Solar Heat Gain Coefficient (SHGC) criteria for all ENERGY STAR® zones.

Milgard also offers high energy performance options for the ultimate in energy efficiency. Energy efficient windows could include one or more of the

following features based on your climate.

- SunCoat® or SunCoatMAX®
- EdgeGardMAX®
- Argon or Krypton
- 4th Surface

For more details on Milgard Energy Efficient packages, visit www.milgard.com/learn/energy-efficiency/energy-efficient-components

To check the energy performance of all Milgard windows and doors, use our Energy Calculator at:

milgard.com/energy-calculator

OPTIONS

Grids

Available in:

- 5/8" flat*
- 1-1/16" sculptured*
- 7/8" Simulated Divided Lite

*Premium vinyl exterior colors include coordinating color grids.

Glass

Refer to glass section. Many more options are available. Please check with your Milgard Representative.

Caution: The use of petroleum based fuels or solvents as release agents in stucco wall installations or glass cleaning will chemically attack materials used in seals and other components, and voids the Milgard Warranty. The use of wax based release agents is recommended.

Expanding foam for insulation purposes should not be used.

Window and Door Hardware



Single Hung and Horizontal Slider

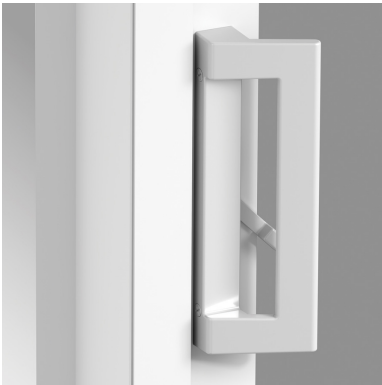
SmartTouch® Lock – Closes and locks window securely in one action.



Casement and Awning

Folding Nesting Handle with Sash Lock

Door Handles



Contemporary (standard)



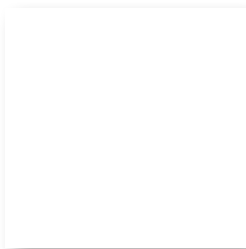
Premium (upgrade)



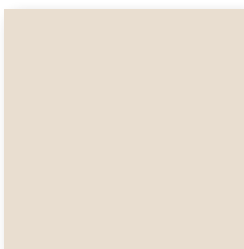
Exterior

Premium Exterior Vinyl Finishes

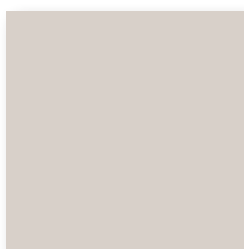
Standard - Matching interior



White



Tan

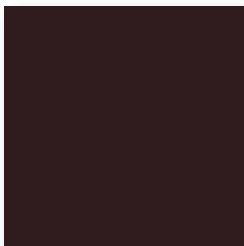


Clay
(available in select regions)

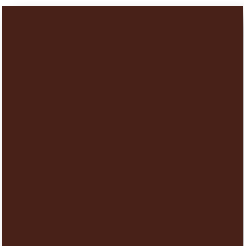
Premium - White interior only



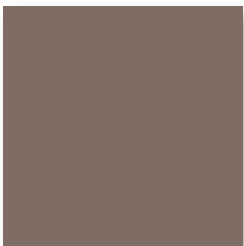
Bronze



Espresso



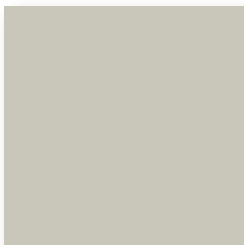
Classic Brown



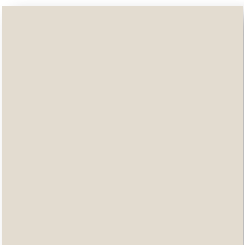
Tweed



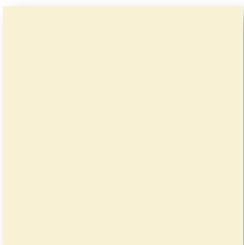
Silver



Fog



Sand



Ivory

Full Lifetime Warranty

At Milgard, we build our windows and doors to last. With the dedication to quality that we put into building the best windows in the business, it wouldn't make sense to back them with anything but the best warranty in the business. That's why we back every properly installed window and door for as long as the homeowner owns their home—including parts and labor.

It's why you can be sure you won't find any windows better than Milgard.

For complete warranty details, visit milgard.com.



Why Milgard?

Quality

Milgard offers award-winning windows and patio doors built for long-lasting comfort. For over 50 years, industry experts have consistently recognized Milgard as a trusted brand. By producing our vinyl and fiberglass frame materials in-house, we can more closely monitor for quality control. Milgard windows and patio doors stand up, while standing out.

Experience

Since 1962, Milgard Windows & Doors has designed and assembled superior, top quality windows and patio doors, backed with a [Full Lifetime Warranty](#). Milgard engineers are known for their industry-leading designs using patented technologies. Whatever your project calls for, Milgard has the right product that can beautifully reflect your vision. From new construction to home remodeling, all Milgard windows and doors are custom made to your exact specifications.

Service

We serve the Western U.S. and Canada with a dozen full-service facilities and customer care centers. Our belief is that by being close to our customers, we can provide them better service.

Sliding Patio Door



The Trinsic™ Series vinyl (PVC) sliding glass door blends the energy efficiency and low maintenance of vinyl with clean lines and even sightlines.

The result is a more contemporary look with maximum glazing area. Available in White, Tan or premium painted upgrade homogenous window frames, the durable vinyl exterior will never need painting. The windows will maintain their color and shape and can be constructed to your exact size specifications.



Please also see:

[Components](#)

[Options](#)

[Hardware](#)

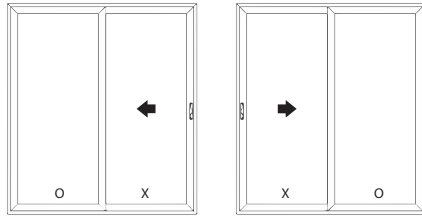
[Premium Exterior Vinyl Finishes](#)

[Full Lifetime Warranty](#)

Sliding Patio Door

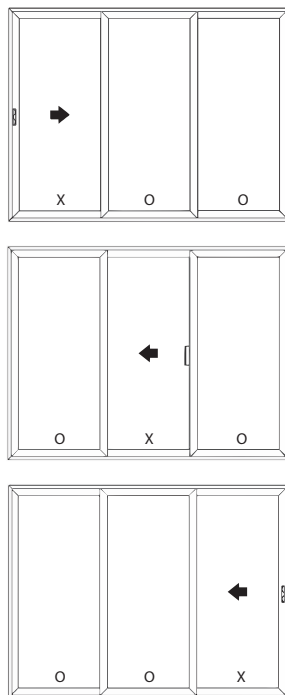
Configurations

2 PANEL

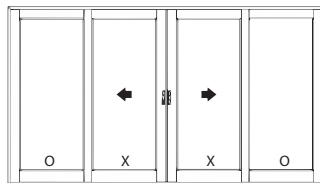


3 PANEL

Center operable panel can be handed left or right



4 PANEL



Minimum/Maximum Sizes

Sliding Door - 2 panel

- Min 5'6" Max 8'8"

Sliding Door - 3 panel

- Min 9'6" Max 12'8"

–

Sliding Door - 4 panel

- Min 10'6" Max 16'8"

Available Frame Styles

- 1-3/8" Fin Setback
- 1" Fin Setback
- 1" Fin Setback with Stucco Key
- 1-1/2" Contour Z-bar
- Block Frame (no fin)

NOTE: For engineering approval contact your Milgard representative for any configuration over 40 square feet. Each Milgard Manufacturing plant reserves the right to alter or change sizes and configurations according to location capabilities. Ask your Milgard rep about specialty applications. Windows over 40 square feet shipped open for field glazing. Varies by location.

Not all frame styles available at all Milgard locations. Contact your Milgard Representative for more information.

Drawings - Quick Links

Sliding Patio Door

133—XO 1-3/8" Fin Setback

134—XO with -3/8" Fin Setback with Stucco Key

135—XO Block Frame

136—XO 1" Fin Setback

137—XO 1" Fin Setback with Stucco Key

138—XO 2-1/4" Contour Z-bar

139—OXO 1-3/8" Fin Setback

140—OXO 1-3/8" Fin Setback with Stucco Key

141—OXO Block Frame

142—OXO 1" Fin Setback

143—OXO 1" Fin Setback with Stucco Key

144—OXO 2-1/4" Contour Z-Bar

145—XOO 1-3/8" Fin Setback

146—XOO 1-3/8" Fin Setback with Stucco Key

147—XOO Block Frame

148—XOO 1" Fin Setback

149—XOO 1" Fin Setback with Stucco Key

150—XOO 2-1/4" Contour Z-Bar

151—OXXO 1-3/8" Fin Setback

152—OXXO 1-3/8" Fin Setback with Stucco Key

153—OXXO Block Frame

154—OXXO 1" Fin Setback

155—OXXO 1" Fin Setback with Stucco Key

156—OXXO 2-1/4" Contour Z-Bar

Revit, SketchUp, .PDF and .DWG files can be accessed at
milgard.com/professionals/technical-resources

Sliding Patio Door

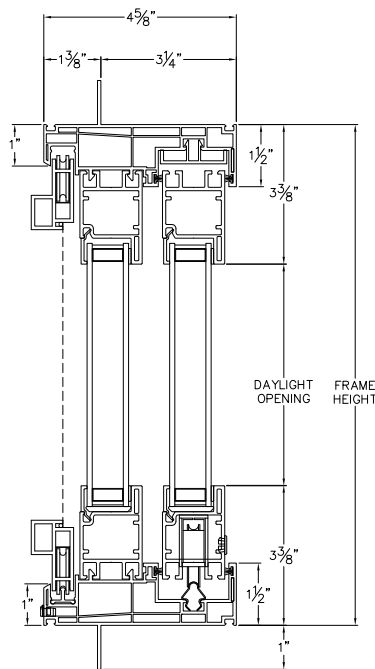
XO 1-3/8" Fin Setback

CAD File Scale	View	File Name	Units	Revision
NTS	Horizontal & Vertical	TRINSIC_2610_SGD_XO_1.375in FIN SET BACK	Inch	03/2018

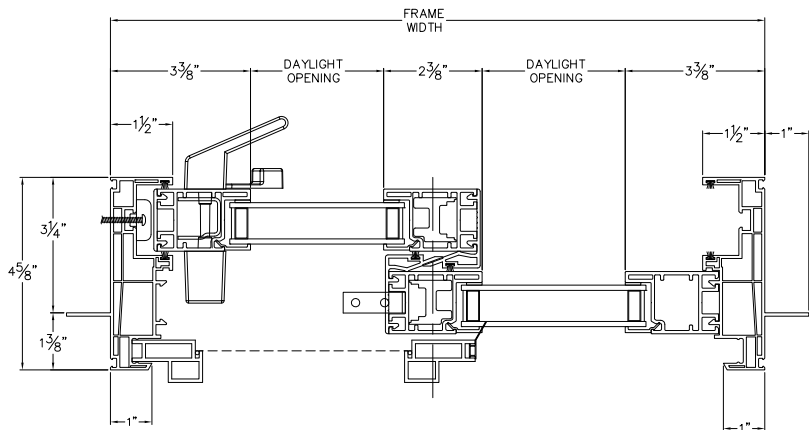
More Technical Documents can be found at milgard.com/professionals
Due to continual research and development, details may be changed at any time. ©2018 Milgard Mfg.

SLIDING DOOR SERIES 2610

XO Configuration Shown
OX Configuration also available



HEAD & SILL



JAMBS

Revit, SketchUp, .PDF and .DWG files can be accessed at
milgard.com/professionals/technical-resources

[Go back to Quick Links](#)

Sliding Patio Door

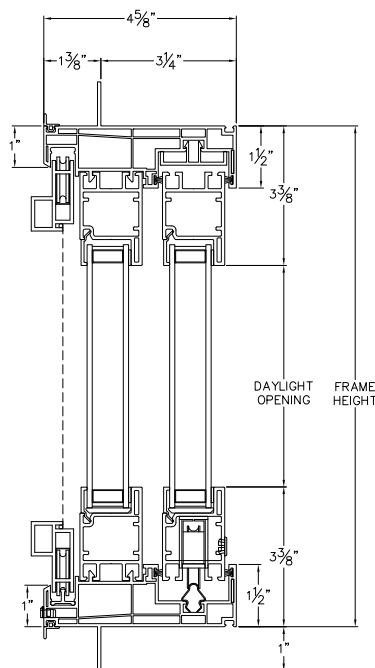
XO with -3/8" Fin Setback with Stucco Key

CAD File Scale	View	File Name	Units	Revision
NTS	Horizontal & Vertical	TRINSIC_2610_SGD_XO_1.375in FIN SET BACK_STUCCO KEY	Inch	03/2018

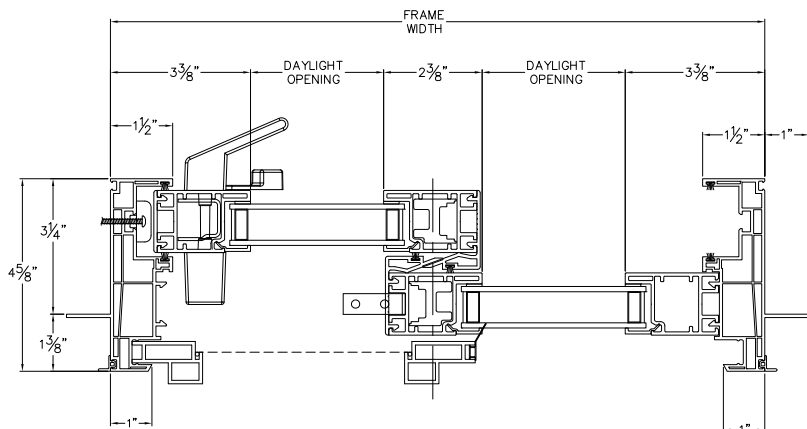
More Technical Documents can be found at milgard.com/professionals
Due to continual research and development, details may be changed at any time. ©2018 Milgard Mfg.

SLIDING DOOR SERIES 2610

XO Configuration Shown
OX Configuration also available



HEAD & SILL



JAMBS

Revit, SketchUp, .PDF and .DWG files can be accessed at
milgard.com/professionals/technical-resources

[Go back to Quick Links](#)

Sliding Patio Door

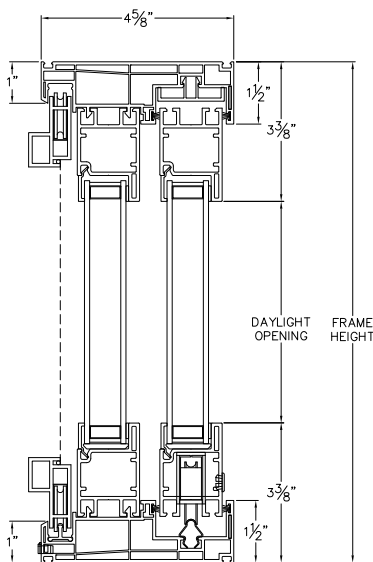
XO Block Frame

CAD File Scale	View	File Name	Units	Revision
NTS	Horizontal & Vertical	TRINSIC_2610_SGD_XO_BLOCK FRAME	Inch	03/2018

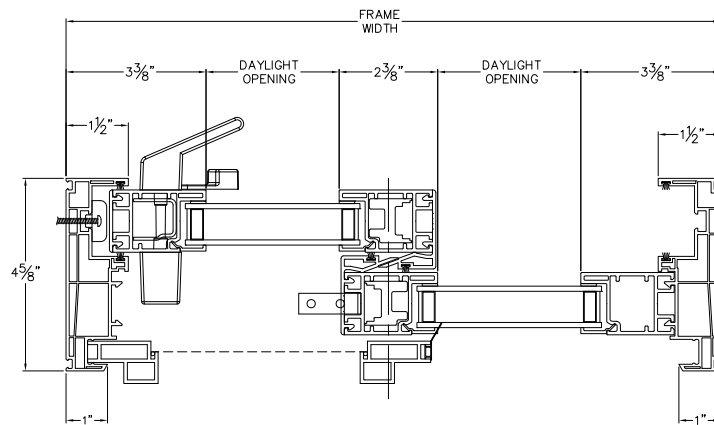
More Technical Documents can be found at milgard.com/professionals
Due to continual research and development, details may be changed at any time. ©2018 Milgard Mfg.

SLIDING DOOR SERIES 2610

XO Configuration Shown
OX Configuration also available



HEAD & SILL



JAMBS

Revit, SketchUp, .PDF and .DWG files can be accessed at
milgard.com/professionals/technical-resources

[Go back to Quick Links](#)

Sliding Patio Door

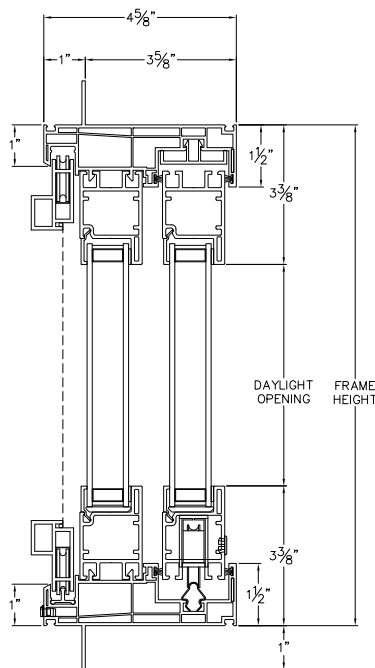
XO 1" Fin Setback

CAD File Scale	View	File Name	Units	Revision
NTS	Horizontal & Vertical	TRINSIC_2630_SGD_XO_1 In FIN SET BACK	Inch	03/2018

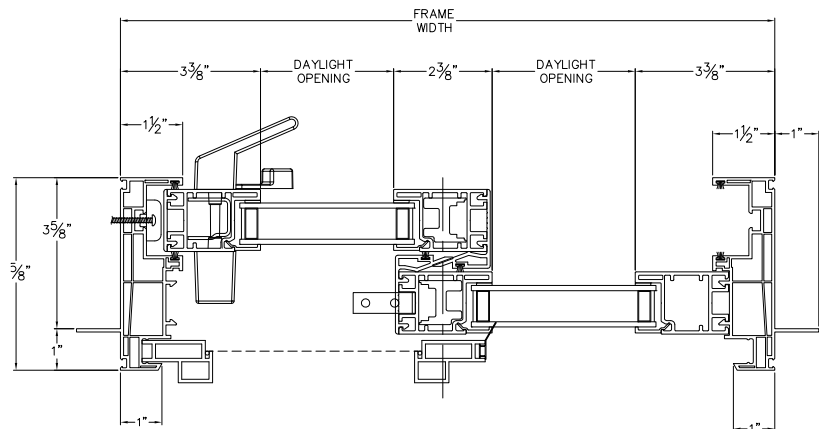
More Technical Documents can be found at milgard.com/professionals
Due to continual research and development, details may be changed at any time. ©2018 Milgard Mfg.

SLIDING DOOR SERIES 2630

XO Configuration Shown
OX Configuration also available



HEAD & SILL



JAMBS

Revit, SketchUp, .PDF and .DWG files can be accessed at milgard.com/professionals/technical-resources

[Go back to Quick Links](#)

Sliding Patio Door

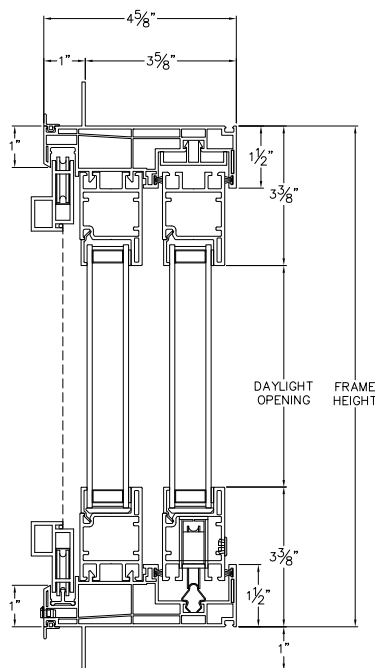
XO 1" Fin Setback with Stucco Key

CAD File Scale	View	File Name	Units	Revision
NTS	Horizontal & Vertical	TRINSIC_2630_SGD_XO_1 In FIN SET BACK_STUCCO KEY	Inch	04/2018

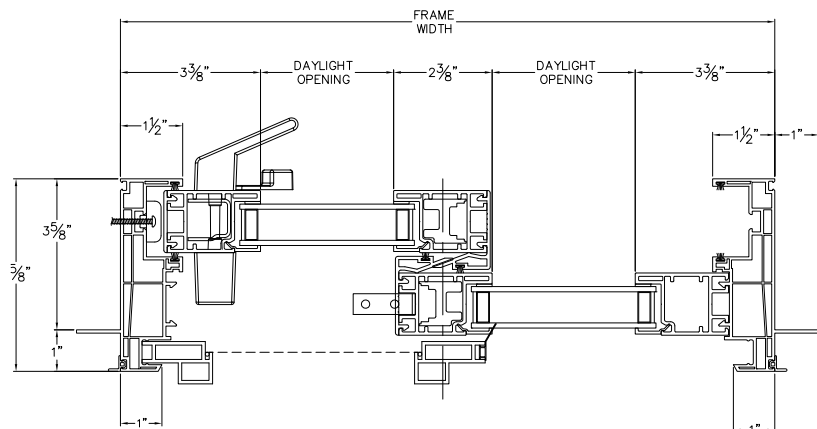
More Technical Documents can be found at milgard.com/professionals
Due to continual research and development, details may be changed at any time. ©2018 Milgard Mfg.

SLIDING DOOR SERIES 2630

XO Configuration Shown
OX Configuration also available



HEAD & SILL



JAMBS

Revit, SketchUp, .PDF and .DWG files can be accessed at
milgard.com/professionals/technical-resources

[Go back to Quick Links](#)

Sliding Patio Door

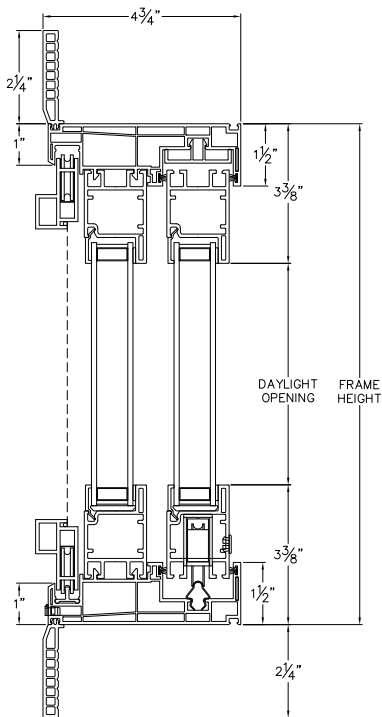
XO 2-1/4" Contour Z-bar

CAD File Scale	View	File Name	Units	Revision
NTS	Horizontal & Vertical	TRINSIC_2670_SGD_XO_2.25 In CONTOUR Z-BAR	Inch	04/2018

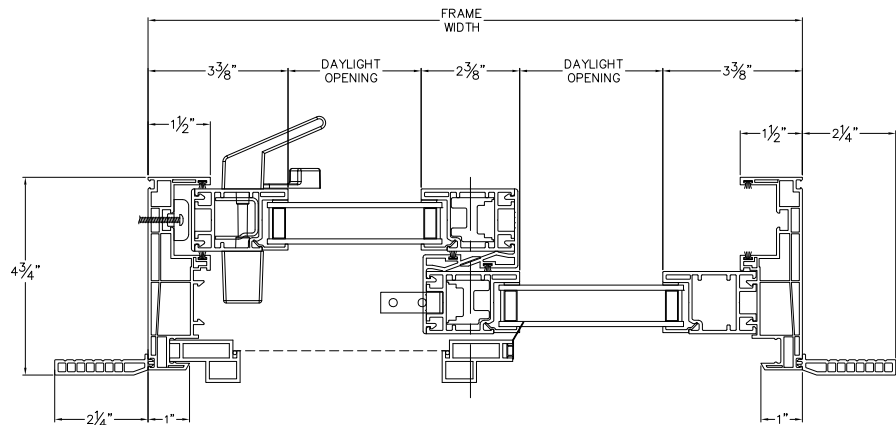
More Technical Documents can be found at milgard.com/professionals
Due to continual research and development, details may be changed at any time. ©2018 Milgard Mfg.

SLIDING DOOR SERIES 2670

XO Configuration Shown
OX Configuration also available



HEAD & SILL



JAMBS

Revit, SketchUp, .PDF and .DWG files can be accessed at
milgard.com/professionals/technical-resources

[Go back to Quick Links](#)

Sliding Patio Door

OXO 1-3/8" Fin Setback

CAD File Scale
NTS

View
Horizontal & Vertical

File Name
TRINSIC_2610_SGD_OXO_1.375in FIN SET BACK

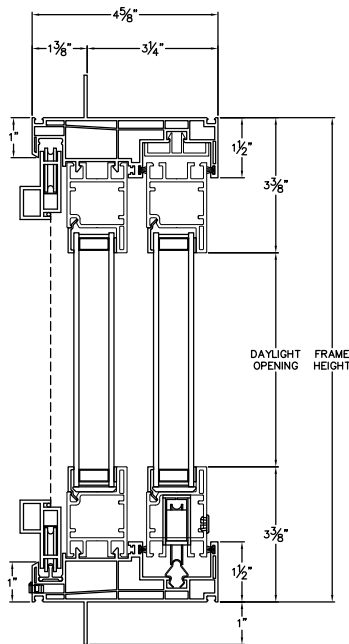
Units
Inch

Revision
04/2018

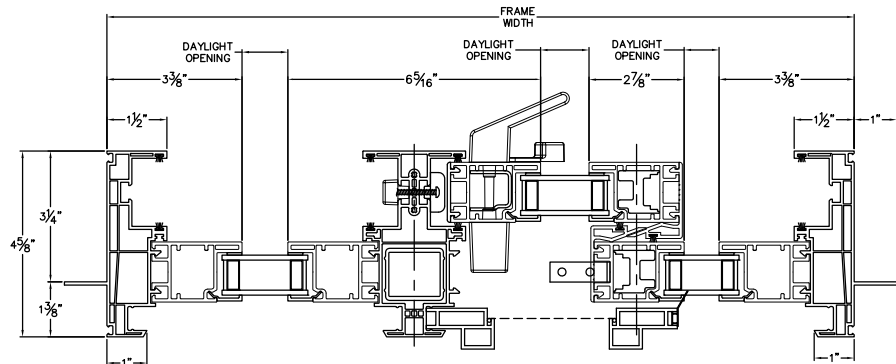
More Technical Documents can be found at milgard.com/professionals
Due to continual research and development, details may be changed at any time. ©2018 Milgard Mfg.

SLIDING DOOR SERIES 2610

OXO (R) Configuration Shown
OXO (L) Configuration also available



HEAD & SILL



JAMBS

Revit, SketchUp, .PDF and .DWG files can be accessed at
milgard.com/professionals/technical-resources

[Go back to Quick Links](#)

Sliding Patio Door

OXO 1-3/8" Fin Setback with Stucco Key

CAD File Scale
NTS

View
Horizontal & Vertical

File Name
TRINSIC_2610_SGD_OXO_1.375in FIN SET BACK_STUCCO KEY

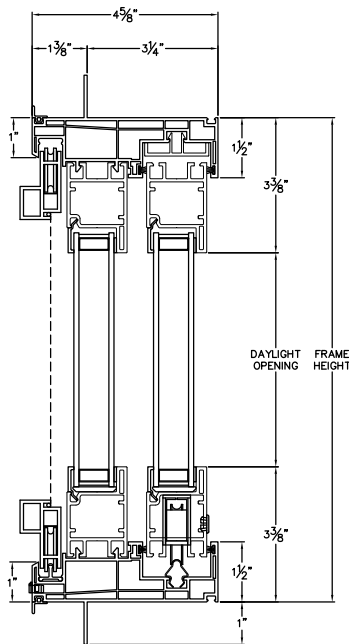
Units
Inch

Revision
04/2018

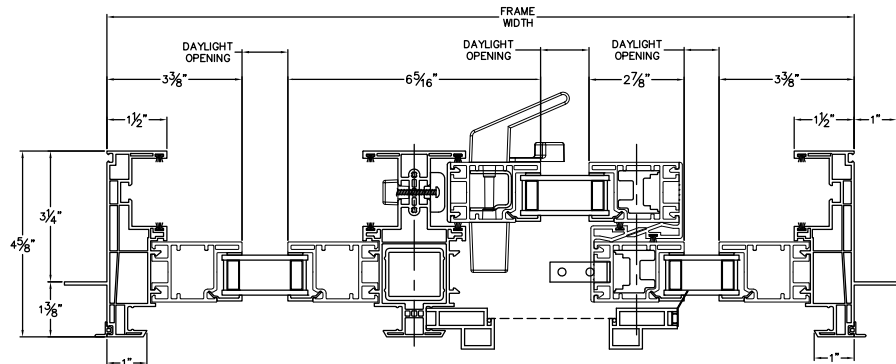
More Technical Documents can be found at milgard.com/professionals
Due to continual research and development, details may be changed at any time. ©2018 Milgard Mfg.

SLIDING DOOR SERIES 2610

OXO (R) Configuration Shown
OXO (L) Configuration also available



HEAD & SILL



JAMBS

Revit, SketchUp, .PDF and .DWG files can be accessed at
milgard.com/professionals/technical-resources

[Go back to Quick Links](#)

Sliding Patio Door

OXO Block Frame

CAD File Scale
NTS

View
Horizontal & Vertical

File Name
TRINSIC_2610_SGD_OXO_BLOCK FRAME

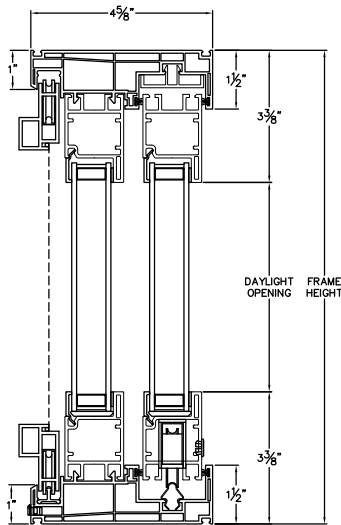
Units
Inch

Revision
04/2018

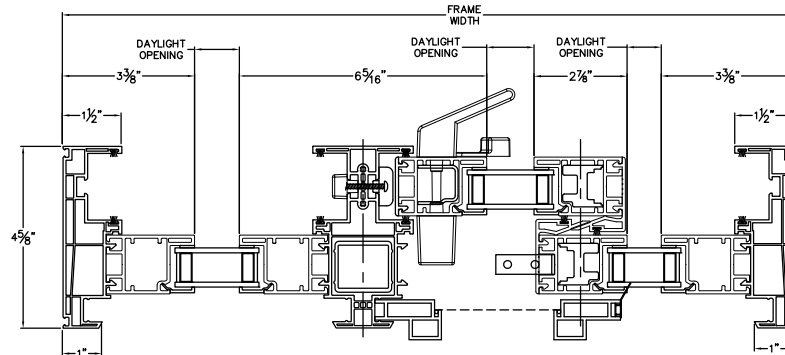
More Technical Documents can be found at milgard.com/professionals
Due to continual research and development, details may be changed at any time. ©2018 Milgard Mfg.

SLIDING DOOR SERIES 2610

OXO (R) Configuration Shown
OXO (L) Configuration also available



HEAD & SILL



JAMBS

Revit, SketchUp, .PDF and .DWG files can be accessed at
milgard.com/professionals/technical-resources

[Go back to Quick Links](#)

Sliding Patio Door

OXO 1" Fin Setback

CAD File Scale
NTS

View
Horizontal & Vertical

File Name
TRINSIC_2630_SGD_OXO_1 In FIN SET BACK

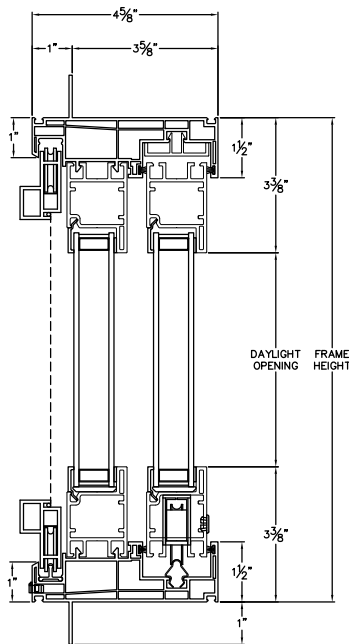
Units
Inch

Revision
04/2018

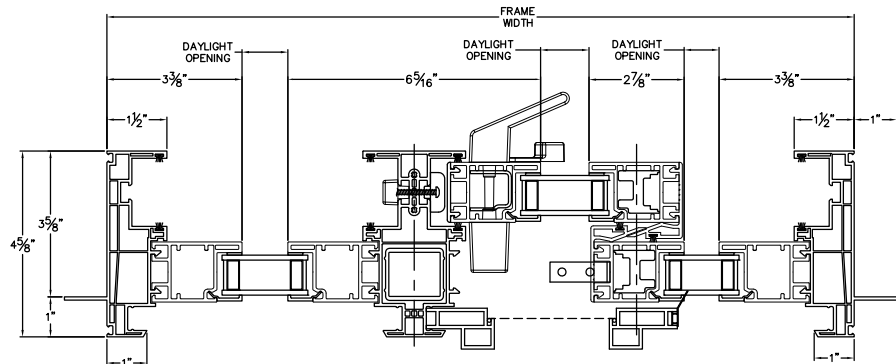
More Technical Documents can be found at milgard.com/professionals
Due to continual research and development, details may be changed at any time. ©2018 Milgard Mfg.

SLIDING DOOR SERIES 2630

OXO (R) Configuration Shown
OXO (L) Configuration also available



HEAD & SILL



JAMBS

Revit, SketchUp, .PDF and .DWG files can be accessed at
milgard.com/professionals/technical-resources

[Go back to Quick Links](#)

Sliding Patio Door

OXO 1" Fin Setback with Stucco Key

CAD File Scale
NTS

View
Horizontal & Vertical

File Name
TRINSIC_2630_SGD_OXO_1 In FIN SET BACK_STUCCO KEY

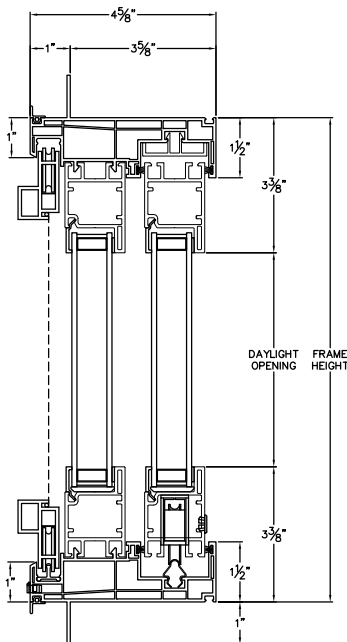
Units
Inch

Revision
04/2018

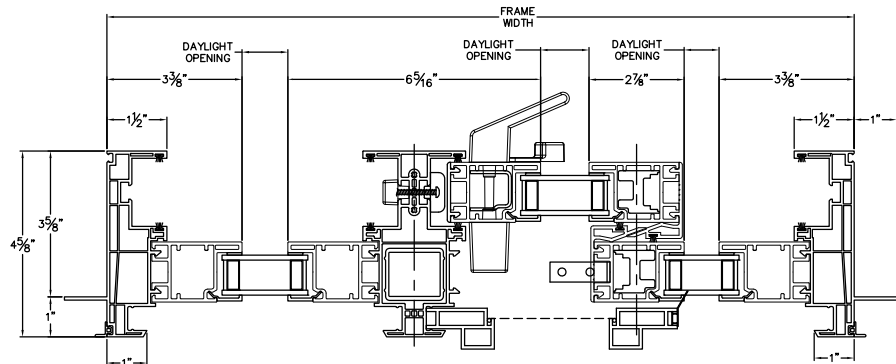
More Technical Documents can be found at milgard.com/professionals
Due to continual research and development, details may be changed at any time. ©2018 Milgard Mfg.

SLIDING DOOR SERIES 2630

OXO (R) Configuration Shown
OXO (L) Configuration also available



HEAD & SILL



JAMBS

Revit, SketchUp, .PDF and .DWG files can be accessed at
milgard.com/professionals/technical-resources

[Go back to Quick Links](#)

Sliding Patio Door

OXO 2-1/4" Contour Z-Bar

CAD File Scale
NTS

View
Horizontal & Vertical

File Name
TRINSIC_2670_SGD_OXO_2.25 In CONTOUR Z-BAR

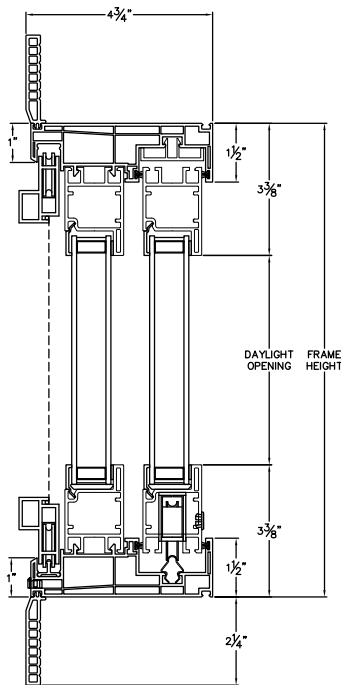
Units
Inch

Revision
04/2018

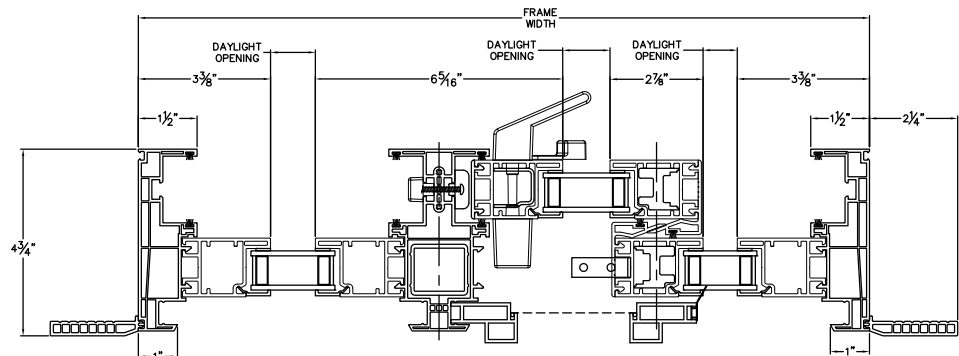
More Technical Documents can be found at milgard.com/professionals
Due to continual research and development, details may be changed at any time. ©2018 Milgard Mfg.

SLIDING DOOR SERIES 2670

OXO (R) Configuration Shown
OXO (L) Configuration also available



HEAD & SILL



JAMBS

Revit, SketchUp, .PDF and .DWG files can be accessed at
milgard.com/professionals/technical-resources

[Go back to Quick Links](#)

Sliding Patio Door

XOO 1-3/8" Fin Setback

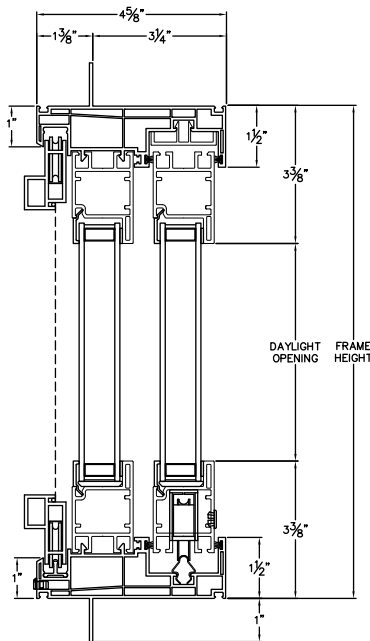
CAD File Scale	View	File Name	Units	Revision
NTS	Horizontal & Vertical	Trinsic_2610_SGD_XOO_1.375in FIN SET BACK	Inch	04/2018

More Technical Documents can be found at milgard.com/professionals

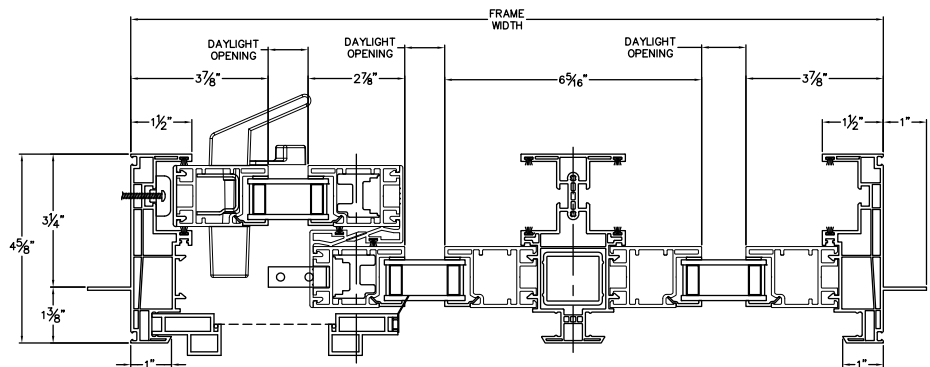
Due to continual research and development, details may be changed at any time. ©2018 Milgard Mfg.

SLIDING DOOR SERIES 2610

XOO Configuration shown
OOX Configuration also available



HEAD & SILL



JAMBS

Revit, SketchUp, .PDF and .DWG files can be accessed at
milgard.com/professionals/technical-resources

[Go back to Quick Links](#)

Sliding Patio Door

XOO 1-3/8" Fin Setback with Stucco Key

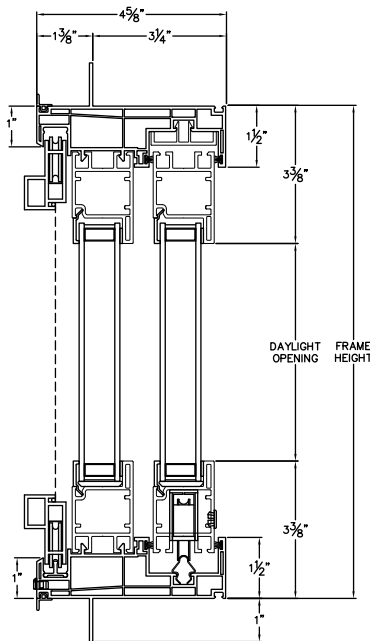
CAD File Scale	View	File Name	Units	Revision
NTS	Horizontal & Vertical	Trinsic_2610_SGD_XOO_1.375in FIN SET BACK W_STUCCO KEY	Inch	04/2018

More Technical Documents can be found at milgard.com/professionals

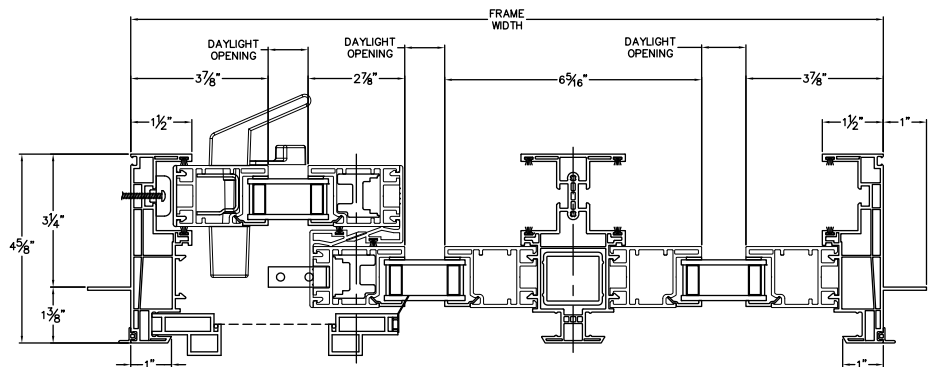
Due to continual research and development, details may be changed at any time. ©2018 Milgard Mfg.

SLIDING DOOR SERIES 2610

XOO Configuration shown
OOX Configuration also available



HEAD & SILL



JAMBS

Revit, SketchUp, .PDF and .DWG files can be accessed at
milgard.com/professionals/technical-resources

[Go back to Quick Links](#)

Sliding Patio Door

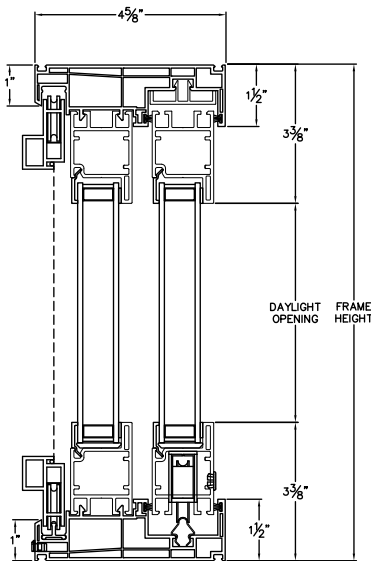
XOO Block Frame

CAD File Scale	View	File Name	Units	Revision
NTS	Horizontal & Vertical	TRINSIC_2610_SGD_XOO_BLOCK FRAME	Inch	05/2018

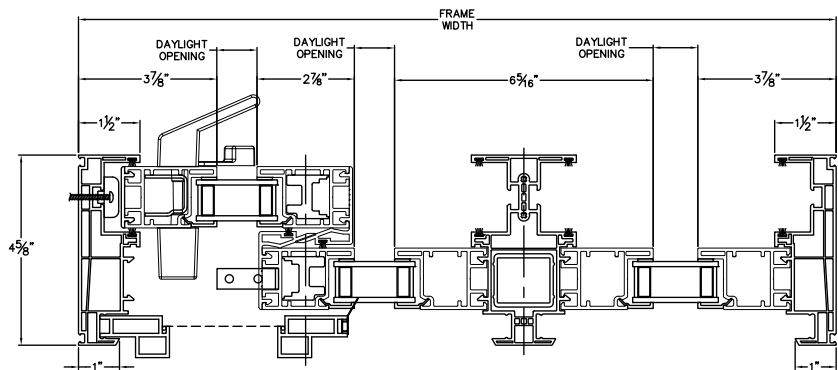
More Technical Documents can be found at milgard.com/professionals
Due to continual research and development, details may be changed at any time. ©2018 Milgard Mfg.

SLIDING DOOR SERIES 2610

XOO Configuration shown
OOX Configuration also available



HEAD & JAMB



JAMB

Revit, SketchUp, .PDF and .DWG files can be accessed at
milgard.com/professionals/technical-resources

[Go back to Quick Links](#)

Sliding Patio Door

XOO 1" Fin Setback

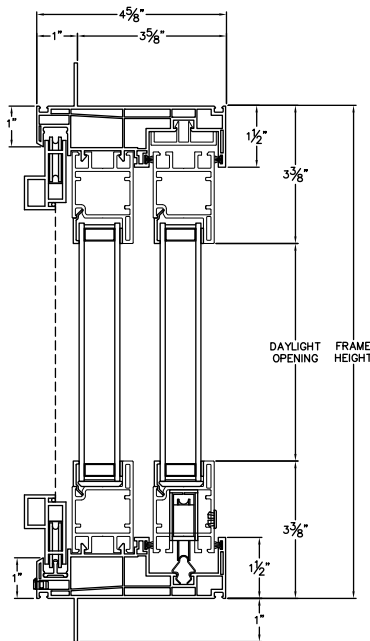
CAD File Scale	View	File Name	Units	Revision
NTS	Horizontal & Vertical	Trinsic_2630_SGD_XOO_1in FIN SET BACK	Inch	04/2018

More Technical Documents can be found at milgard.com/professionals

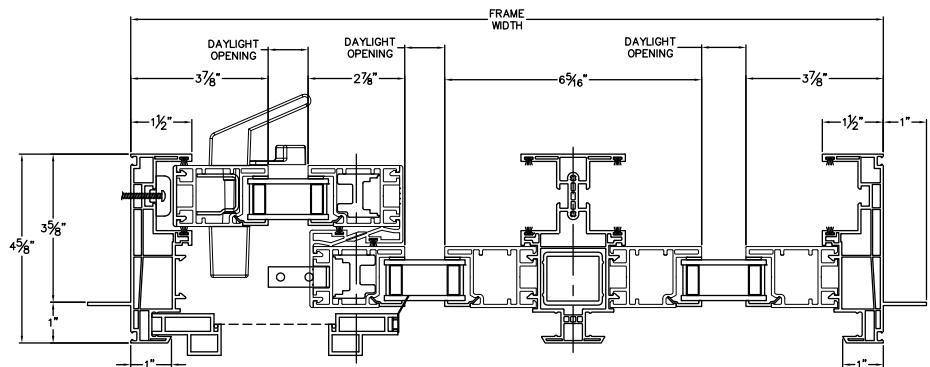
Due to continual research and development, details may be changed at any time. ©2018 Milgard Mfg.

SLIDING DOOR SERIES 2630

XOO Configuration shown
OOX Configuration also available



HEAD & SILL



JAMBS

Revit, SketchUp, .PDF and .DWG files can be accessed at
milgard.com/professionals/technical-resources

[Go back to Quick Links](#)

Sliding Patio Door

XOO 1" Fin Setback with Stucco Key

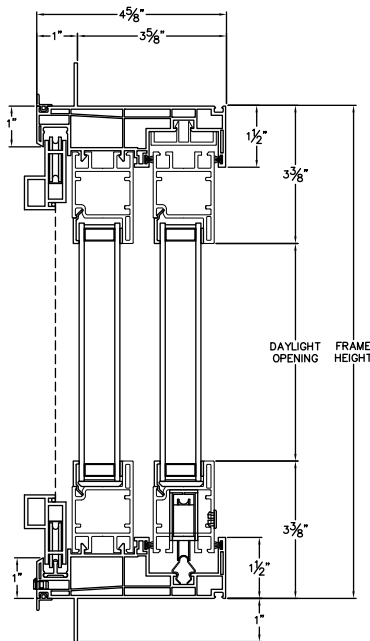
CAD File Scale	View	File Name	Units	Revision
NTS	Horizontal & Vertical	TRINSIC_2630_SGD_XOO_1in FIN SET BACK_STUCCO KEY	Inch	04/2018

More Technical Documents can be found at milgard.com/professionals

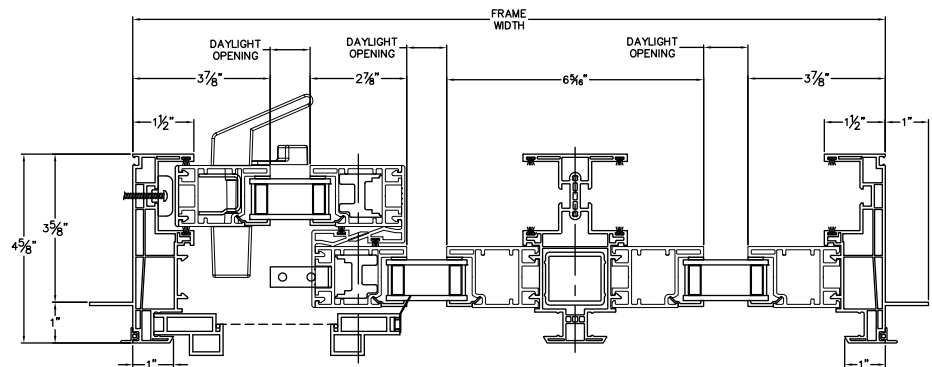
Due to continual research and development, details may be changed at any time. ©2018 Milgard Mfg.

SLIDING DOOR SERIES 2630

XOO Configuration shown
OOX Configuration also available



HEAD & SILL



JAMBS

Revit, SketchUp, .PDF and .DWG files can be accessed at
milgard.com/professionals/technical-resources

[Go back to Quick Links](#)

Sliding Patio Door

XOO 2-1/4" Contour Z-Bar

CAD File Scale
NTS

View
Horizontal & Vertical

File Name
TRINSIC_2670_SGD_XOO_2.25 In CONTOUR Z-BAR

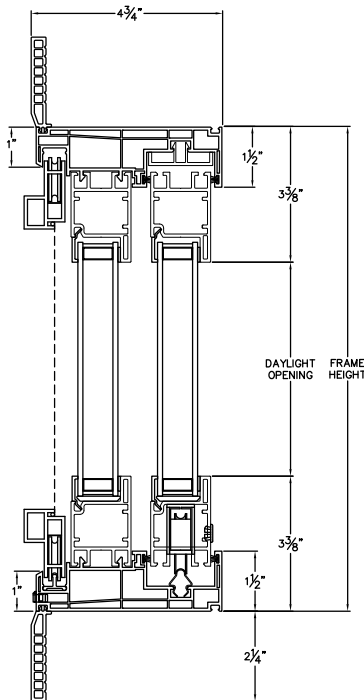
Units
Inch

Revision
05/2018

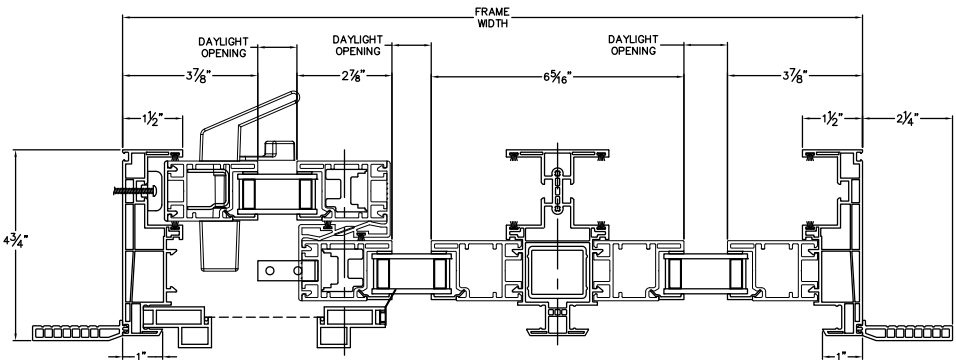
More Technical Documents can be found at milgard.com/professionals
Due to continual research and development, details may be changed at any time. ©2018 Milgard Mfg.

SLIDING DOOR SERIES 2670

XOO Configuration shown
OOX Configuration also available



HEAD & SILL



JAMBS

Revit, SketchUp, .PDF and .DWG files can be accessed at
milgard.com/professionals/technical-resources

[Go back to Quick Links](#)

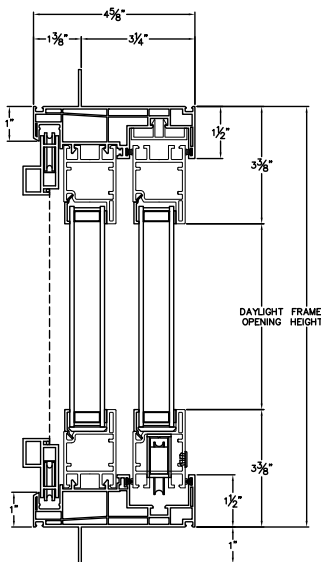
Sliding Patio Door

OXXO 1-3/8" Fin Setback

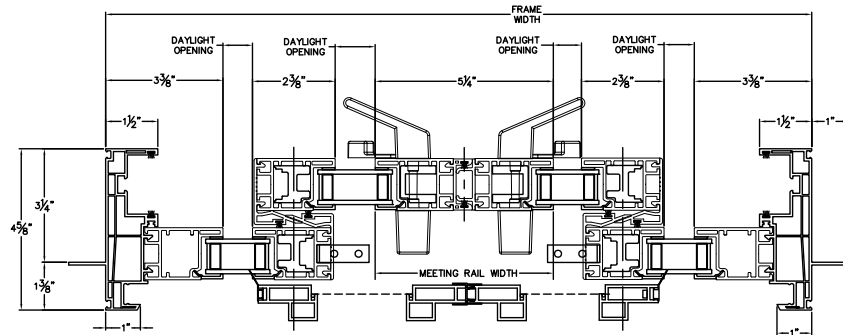
CAD File Scale	View	File Name	Units	Revision
NTS	Horizontal & Vertical	TRINSIC_2610_SGD_OXXO_1.375in FIN SET BACK	Inch	07/2018

More Technical Documents can be found at milgard.com/professionals
Due to continual research and development, details may be changed at any time. ©2018 Milgard Mfg.

SLIDING DOOR SERIES 2610



HEAD & SILL



JAMBS

Revit, SketchUp, .PDF and .DWG files can be accessed at
milgard.com/professionals/technical-resources

[Go back to Quick Links](#)

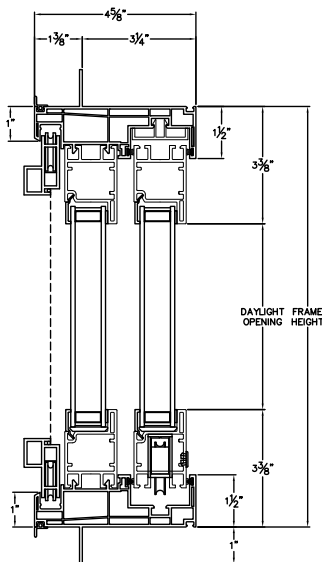
Sliding Patio Door

OXXO 1-3/8" Fin Setback with Stucco Key

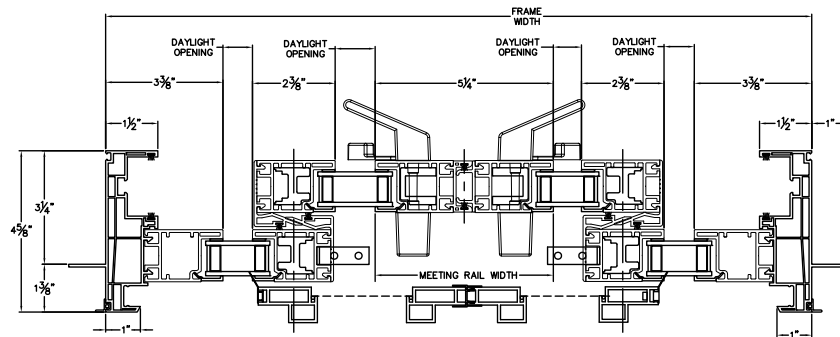
CAD File Scale	View	File Name	Units	Revision
NTS	Horizontal & Vertical	TRINSIC_2610_SGD_OXXO_1.375in FIN SET BACK_STUCCO KEY	Inch	07/2018

More Technical Documents can be found at milgard.com/professionals
Due to continual research and development, details may be changed at any time. ©2018 Milgard Mfg.

SLIDING DOOR SERIES 2610



HEAD & SILL



JAMBS

Revit, SketchUp, .PDF and .DWG files can be accessed at
milgard.com/professionals/technical-resources

[Go back to Quick Links](#)

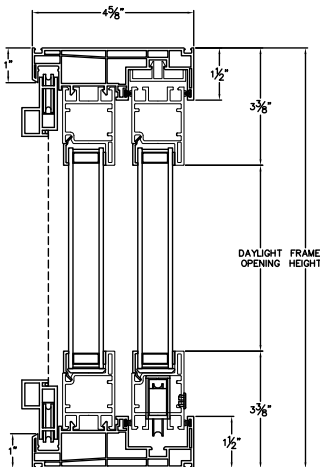
Sliding Patio Door

OXXO Block Frame

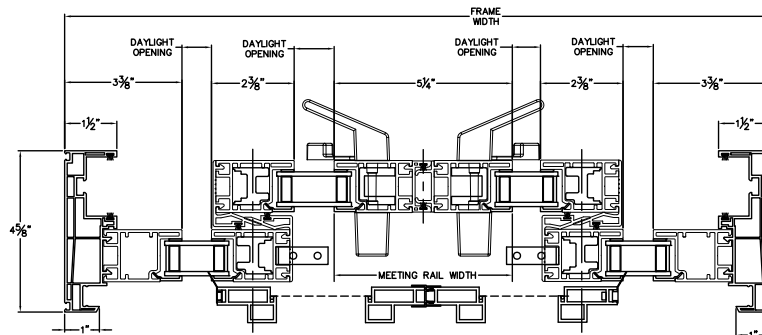
CAD File Scale	View	File Name	Units	Revision
NTS	Horizontal & Vertical	TRINSIC_2610_SGD_OXXO_BLOCK FRAME	Inch	07/2018

More Technical Documents can be found at milgard.com/professionals
Due to continual research and development, details may be changed at any time. ©2018 Milgard Mfg.

SLIDING DOOR SERIES 2610



HEAD & SILL



JAMBS

Revit, SketchUp, .PDF and .DWG files can be accessed at
milgard.com/professionals/technical-resources

[Go back to Quick Links](#)

Sliding Patio Door

OXXO 1" Fin Setback

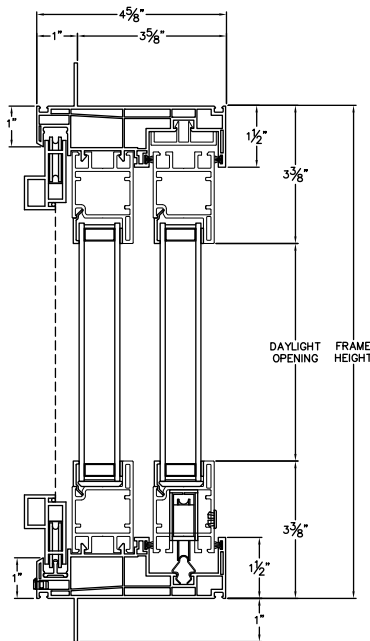
CAD File Scale	View	File Name	Units	Revision
NTS	Horizontal & Vertical	Trinsic_2630_SGD_XOO_1in FIN SET BACK	Inch	04/2018

More Technical Documents can be found at milgard.com/professionals

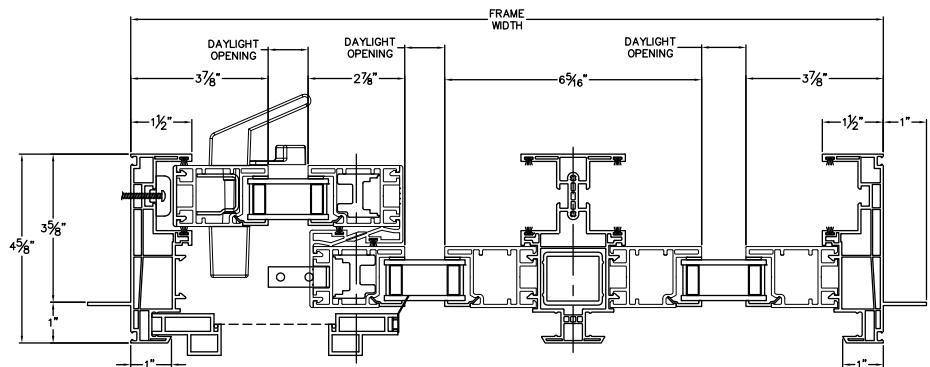
Due to continual research and development, details may be changed at any time. ©2018 Milgard Mfg.

SLIDING DOOR SERIES 2630

XOO Configuration shown
OOX Configuration also available



HEAD & SILL



JAMBS

Revit, SketchUp, .PDF and .DWG files can be accessed at
milgard.com/professionals/technical-resources

[Go back to Quick Links](#)

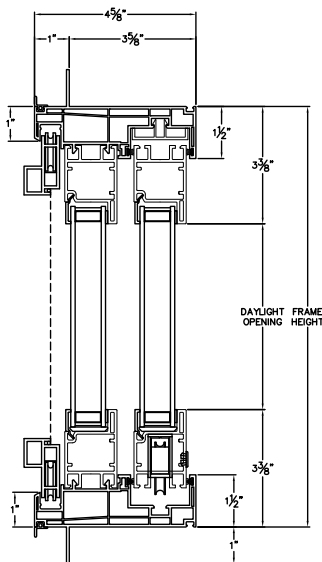
Sliding Patio Door

OXXO 1" Fin Setback with Stucco Key

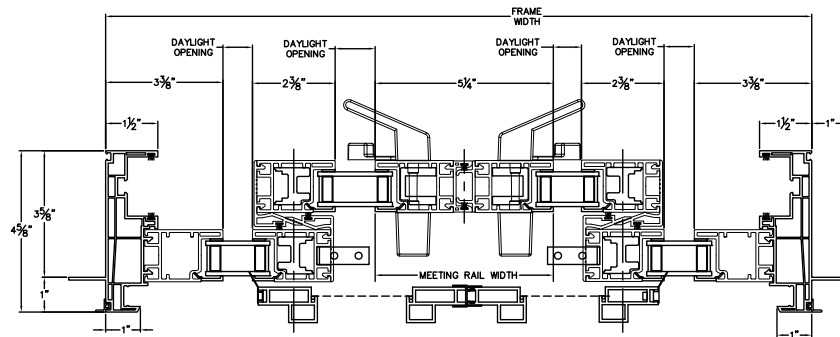
CAD File Scale	View	File Name	Units	Revision
NTS	Horizontal & Vertical	TRINSIC_2630_SGD_OXXO_1in FIN SET BACK_STUCCO KEY	Inch	07/2018

More Technical Documents can be found at milgard.com/professionals
Due to continual research and development, details may be changed at any time. ©2018 Milgard Mfg.

SLIDING DOOR SERIES 2630



HEAD & SILL



JAMBS

Revit, SketchUp, .PDF and .DWG files can be accessed at
milgard.com/professionals/technical-resources

[Go back to Quick Links](#)

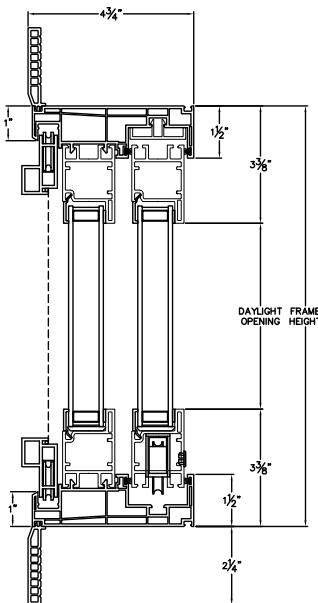
Sliding Patio Door

OXXO 2-1/4" Contour Z-Bar

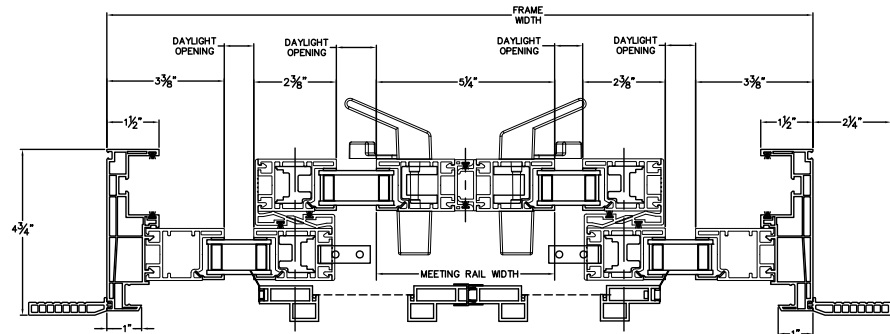
CAD File Scale	View	File Name	Units	Revision
NTS	Horizontal & Vertical	TRINSIC_2670_SGD_OXXO_2.25 In CONTOUR Z-BAR	Inch	07/2018

More Technical Documents can be found at milgard.com/professionals
Due to continual research and development, details may be changed at any time. ©2018 Milgard Mfg.

SLIDING DOOR SERIES 2670



HEAD & SILL



JAMBS

Revit, SketchUp, .PDF and .DWG files can be accessed at milgard.com/professionals/technical-resources

[Go back to Quick Links](#)