

# TEMPLATES

ALL THE SHAPES FOR THIS ISSUE'S MAKES. UNLESS OTHERWISE STATED, TEMPLATES ARE SHOWN AT 100%. YOU CAN FIND THE FULL-SIZE TEMPLATES READY TO DOWNLOAD FROM [WWW.MOLLIEMAKES.COM](http://WWW.MOLLIEMAKES.COM)



05



06



07



08



09



09

## MATERIALS

- Your keyring kit
- Embroidery hoop, 10cm (4")

01 Place the fabric inside the **embroidery hoop**, pulling the fabric taut and positioning the cat in the centre.

02 Using three strands of thread throughout, start by embroidering over the pink

sections **of the feet** using satin stitch and pink thread.

03 Use pink thread and backstitch to fill inside the ears, then **add the cheeks** using pink thread and French knots.

04 Add detail to the flowers using backstitch, referring to the image as a guide. Fill in a few petals using satin stitch, and add **French knots** above the flowers.

05 Backstitch over the collar using **navy thread**, then tie a small bow in navy to the collar.

06 Cut out the front, back and keyring tab pieces from the fabric along **the marked lines**. Press the long edges of the keyring tab to the centre, then fold it in half along the length.

07 Place the folded keyring tab on the embroidered front piece,

aligning the raw edges as shown, then place the back piece on top with **right sides (RS)** together, aligning the edges.

08 Sew around the outside, roughly 0.5cm (1/4") in from the edge, leaving a **2cm (3/4")** gap.

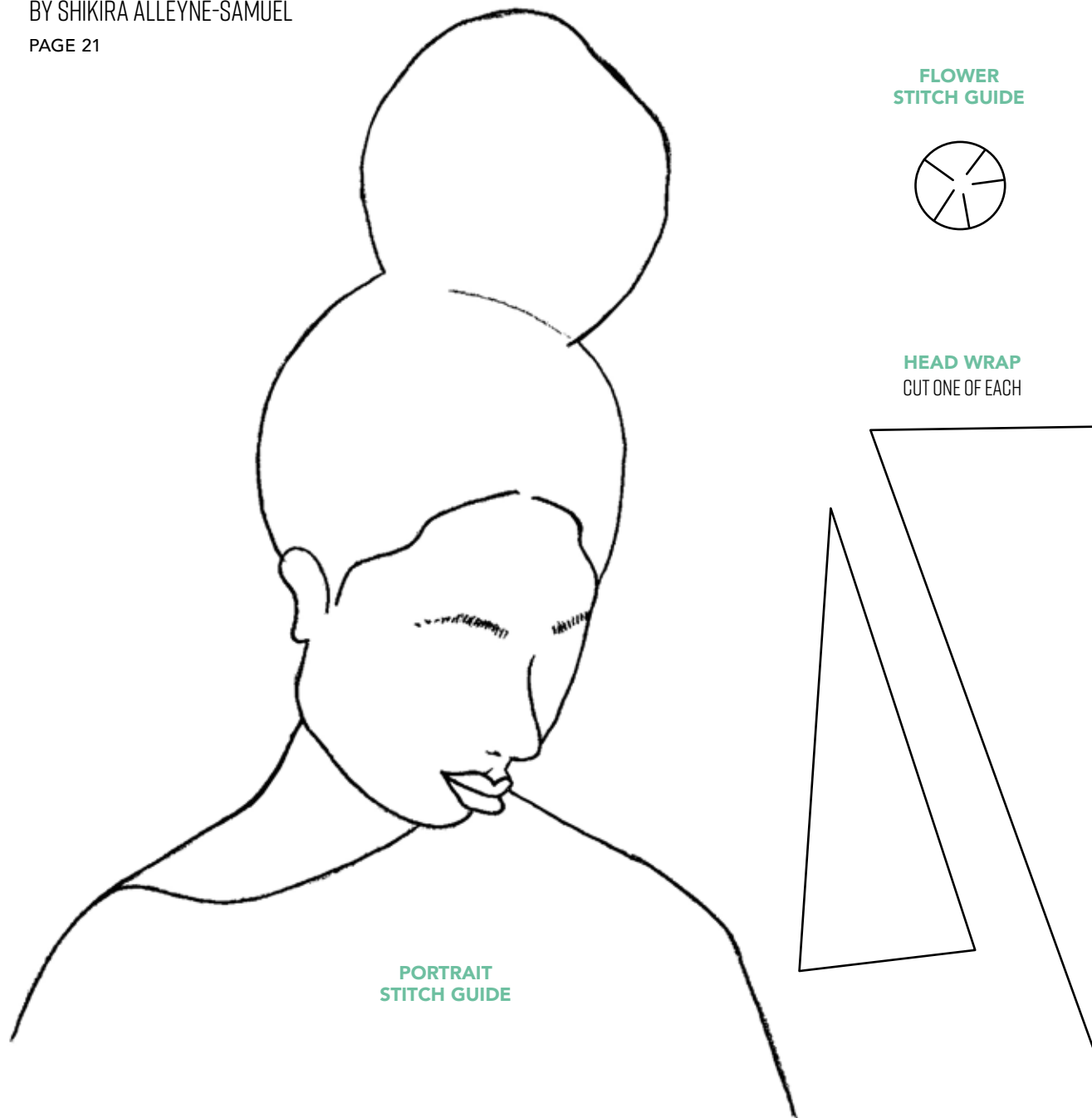
09 Turn the keyring RS out and **fill with stuffing**. Neatly sew the gap closed, then add the silver ring to the keyring tab to finish.

Thank you for making this project from Mollie Makes. We have requested specific permission from designers so that you can recreate and sell selected projects from this issue on the following conditions. Just look for this icon. You can individually hand-make as many as you wish of our labelled projects, to sell either for yourself, your local event or to raise money for charity. You cannot sell in shops (online or otherwise) and you cannot go into mass production, which means you cannot manufacture in large quantities, especially by machine. Selling photocopies of any part of this magazine, its kits or supplements is prohibited. We don't mind if you make a copy of the templates for a friend but please do not make any part of the templates or instructions available to others through your website or a third party website, or copy it multiple times without our permission. Please respect one another's copyright.

**EMBROIDERED PORTRAIT**

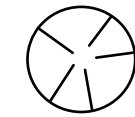
BY SHIKIRA ALLEYNE-SAMUEL

PAGE 21



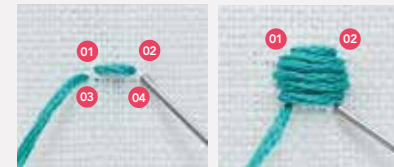
**PORTRAIT STITCH GUIDE**

**FLOWER STITCH GUIDE**



**HEAD WRAP**  
CUT ONE OF EACH

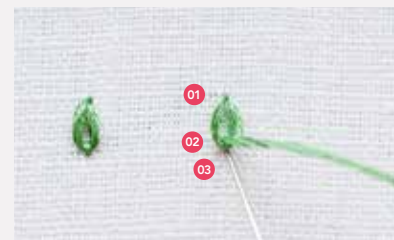
**EMBROIDERY STITCH GUIDE**



**SATIN STITCH**

When you want to fill an area with a smooth finish, this stitch is the ideal choice. It's best worked in small areas, because if the stitches are too long, they may snag.

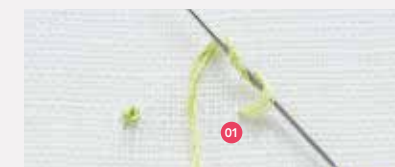
Come up at point 1, then go down at point 2. Come up at point 3, then go down at point 4. Repeat. Always work the stitches across the area you're filling, coming up on the opposite side where your needle went down.



**LAZY DAISY**

Usually used for flower petals, this stitch is also ideal for embroidering tiny seeds.

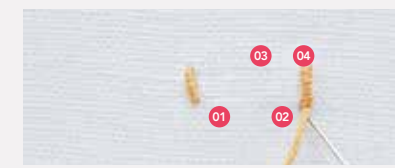
Come up at point 1, then go back down at point 1, leaving a small loop. Come up through the loop at point 2, then go down at point 3 (next to point 2, but not the same hole).



**FRENCH KNOT**

This is a stitch that everyone should learn, because it's so useful. The secret is to hold the working thread taut while you pull it through.

Come up at point 1, then wrap the thread around the needle twice. Holding the working thread with your non-dominant hand, bring the needle down at point 2 (close to point 1, but not the same hole) and pull slowly until the knot is formed.



**SPLIT STITCH**

A great stitch for working outlines. When you make the 'split', go through the fibres, not just in between the strands.

Come up at point 1, then go down at point 2. Come up at point 3, splitting the previous stitch through the fibres, then go down at point 4. Repeat.



**BACKSTITCH**

This stitch is ideal for outlines, and it's the one you'll find you use the most.

Come up from the back at point 1, then go down at point 2. Come up at point 3, then go back to point 1 and bring the needle through to the back.



**WOVEN WHEEL**

This woven wheel is easy to work and creates stunning flower shapes. It's usually started with five spokes, but can be worked with more, as long as there are an odd number of spokes.

Using straight stitches of even length, form the five spokes of the woven wheel – it should look a bit like a star. Bring the needle up close to the centre of the wheel, then pass the needle over one spoke and under the next. Pull the thread through so it's close to the centre, then pass the needle over the next spoke and under the one after that.

Repeat, weaving the needle over and under the spokes around the wheel. Once the woven wheel is full, bring the needle through to the back of the fabric to finish off the stitch.

Thank you for making this project from *Mollie Makes*. We have requested specific permission from designers so that you can recreate and sell selected projects from this issue on the following conditions. Just look for this icon. You can individually hand-make as many as you wish of our labelled projects, to sell either for yourself, your local event or to raise money for charity. You cannot sell in shops (online or otherwise) and you cannot go into mass production, which means you cannot manufacture in large quantities, especially by machine. Selling photocopies of any part of this magazine, its kits or supplements is prohibited. We don't mind if you make a copy of the templates for a friend but please do not make any part of the templates or instructions available to others through your website or a third party website, or copy it multiple times without our permission. Please respect one another's copyright.

Thank you for making this project from *Mollie Makes*. We have requested specific permission from designers so that you can recreate and sell selected projects from this issue on the following conditions. Just look for this icon. You can individually hand-make as many as you wish of our labelled projects, to sell either for yourself, your local event or to raise money for charity. You cannot sell in shops (online or otherwise) and you cannot go into mass production, which means you cannot manufacture in large quantities, especially by machine. Selling photocopies of any part of this magazine, its kits or supplements is prohibited. We don't mind if you make a copy of the templates for a friend but please do not make any part of the templates or instructions available to others through your website or a third party website, or copy it multiple times without our permission. Please respect one another's copyright.

**WALL HANGING**  
BY HAPPY FABRIC  
PAGE 81

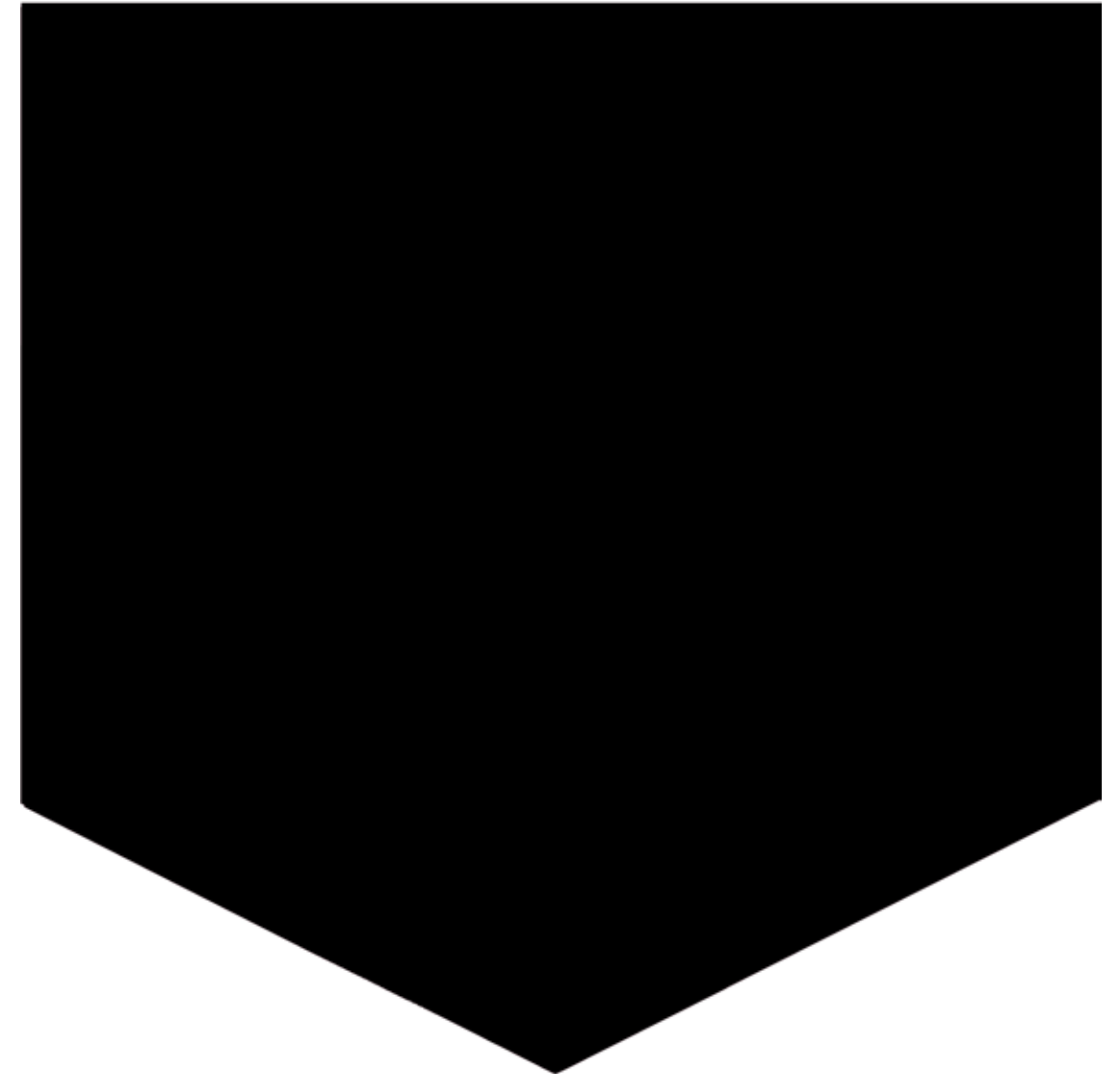
**LETTERING**  
CUT ONE OF EACH


**I REALLY  
REALLY  
LIKE  
YOU**

Thank you for making this project from *Mollie Makes*. We have requested specific permission from designers so that you can recreate and sell selected projects from this issue on the following conditions. Just look for this icon.  You can individually hand-make as many as you wish of our labelled projects, to sell either for yourself, your local event or to raise money for charity. You cannot sell in shops (online or otherwise) and you cannot go into mass production, which means you cannot manufacture in large quantities, especially by machine. Selling photocopies of any part of this magazine, its kits or supplements is prohibited. We don't mind if you make a copy of the templates for a friend but please do not make any part of the templates or instructions available to others through your website or a third party website, or copy it multiple times without our permission. Please respect one another's copyright.

**WALL HANGING**  
BY HAPPY FABRIC  
PAGE 81  
Photocopy at 200%

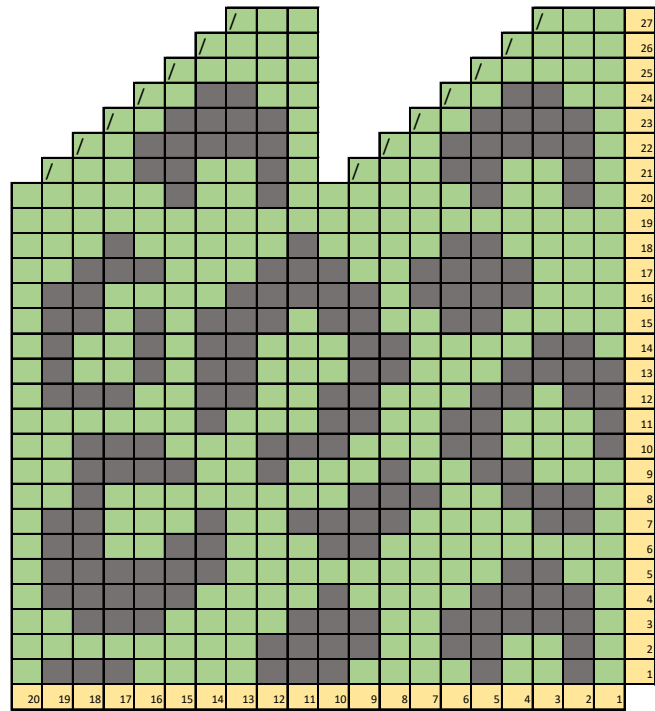
**BANNER**  
CUT ONE



Thank you for making this project from *Mollie Makes*. We have requested specific permission from designers so that you can recreate and sell selected projects from this issue on the following conditions. Just look for this icon.  You can individually hand-make as many as you wish of our labelled projects, to sell either for yourself, your local event or to raise money for charity. You cannot sell in shops (online or otherwise) and you cannot go into mass production, which means you cannot manufacture in large quantities, especially by machine. Selling photocopies of any part of this magazine, its kits or supplements is prohibited. We don't mind if you make a copy of the templates for a friend but please do not make any part of the templates or instructions available to others through your website or a third party website, or copy it multiple times without our permission. Please respect one another's copyright.

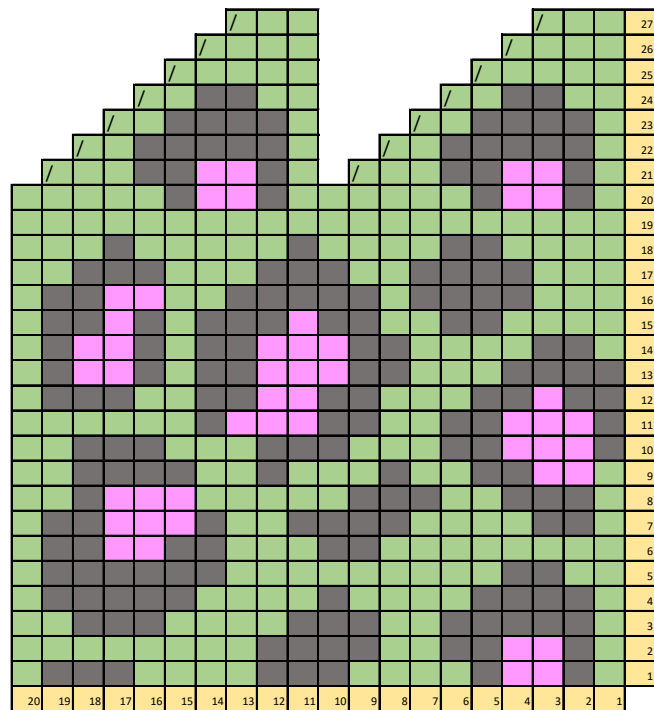
**KNITTED HAT**  
BY ELISABETH LEBBE  
PAGE 30

CHART 1



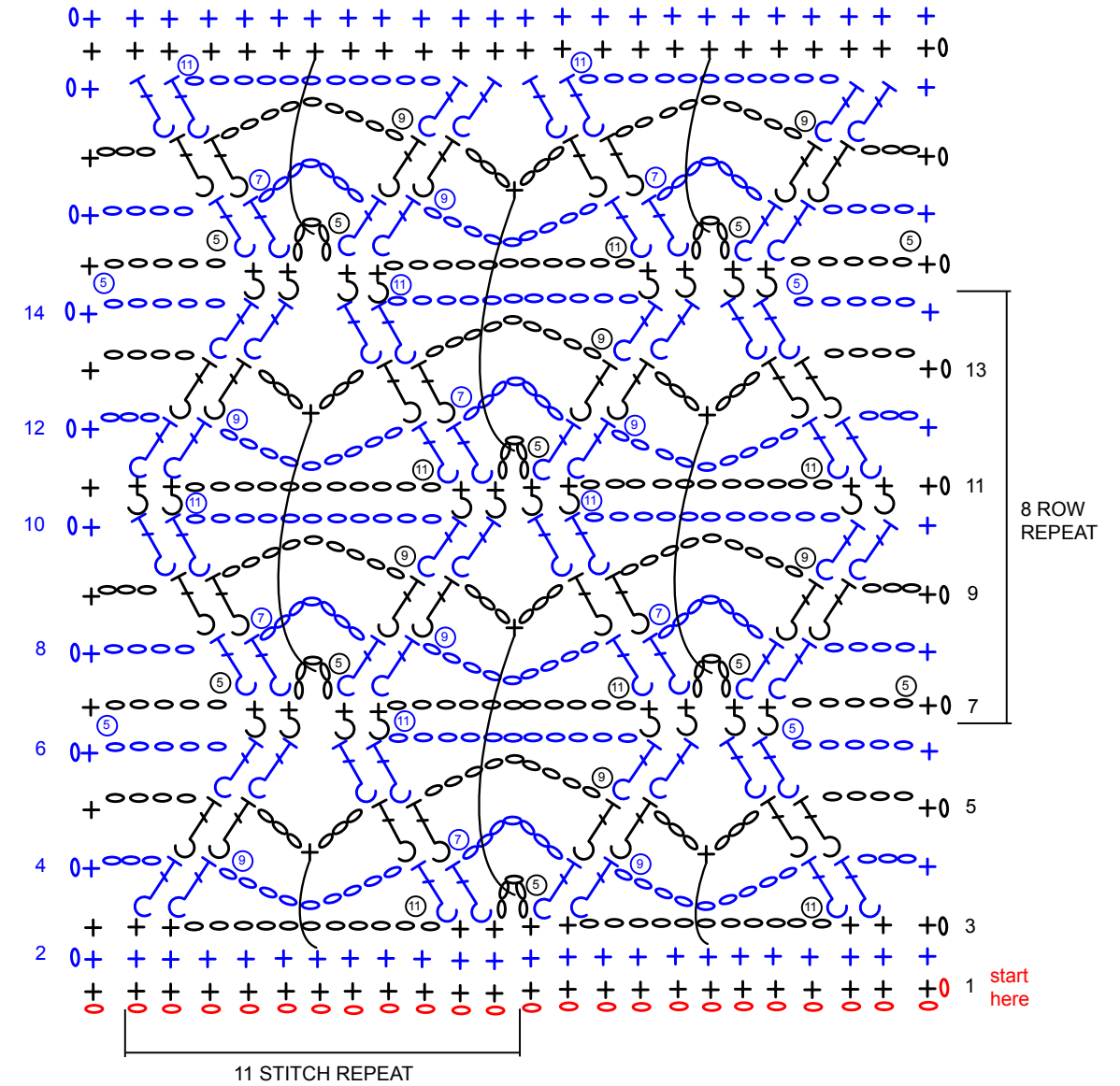
- YARN A
- YARN B
- K2TOG

CHART 2



- YARN A
- YARN B
- K2TOG
- YARN C

**CROCHET CUSHION**   
BY ERIN BLACK  
PAGE 51



- = BPdc
- = FPdc
- = Sc
- = Sc below
- = Ch
- = FPsc
- = Ch count

Thank you for making this project from *Mollie Makes*. We have requested specific permission from designers so that you can recreate and sell selected projects from this issue on the following conditions. Just look for this icon. You can individually hand-make as many as you wish of our labelled projects, to sell either for yourself, your local event or to raise money for charity. You cannot sell in shops (online or otherwise) and you cannot go into mass production, which means you cannot manufacture in large quantities, especially by machine. Selling photocopies of any part of this magazine, its kits or supplements is prohibited. We don't mind if you make a copy of the templates for a friend but please do not make any part of the templates or instructions available to others through your website or a third party website, or copy it multiple times without our permission. Please respect one another's copyright.

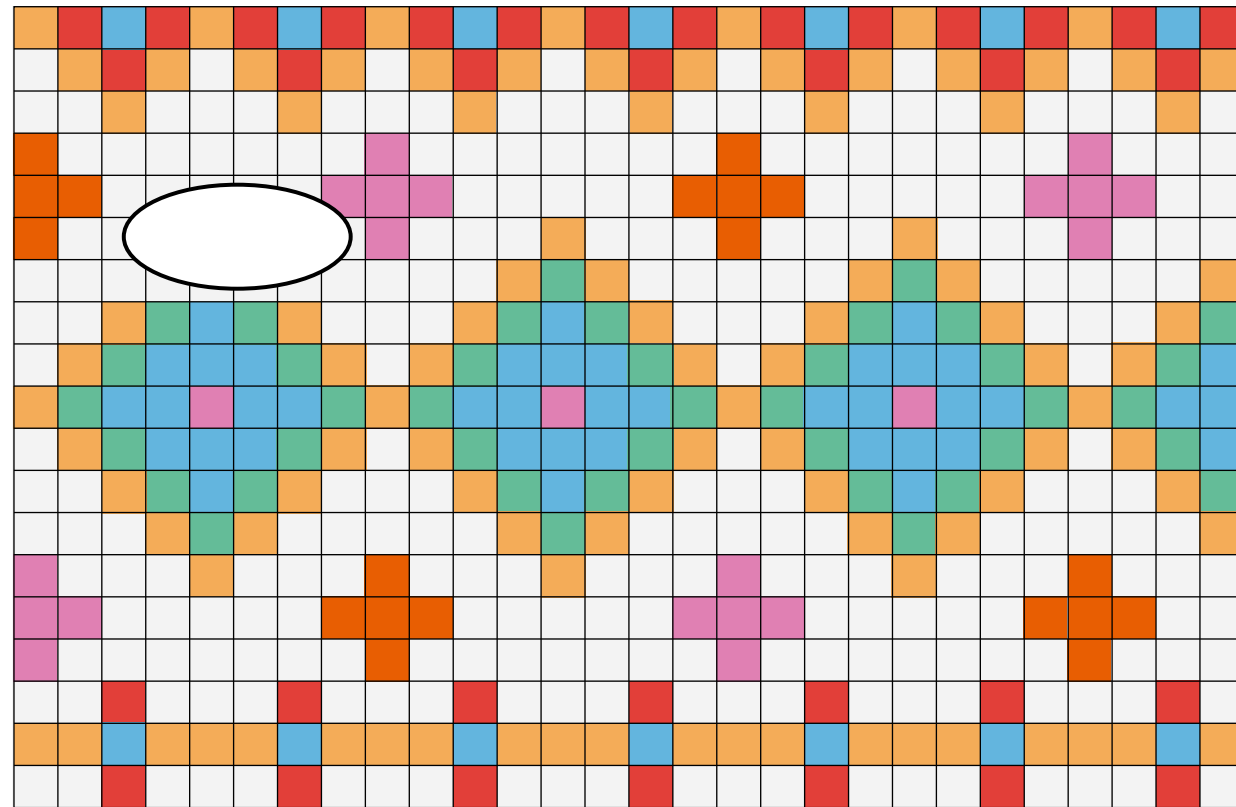
Thank you for making this project from *Mollie Makes*. We have requested specific permission from designers so that you can recreate and sell selected projects from this issue on the following conditions. Just look for this icon. You can individually hand-make as many as you wish of our labelled projects, to sell either for yourself, your local event or to raise money for charity. You cannot sell in shops (online or otherwise) and you cannot go into mass production, which means you cannot manufacture in large quantities, especially by machine. Selling photocopies of any part of this magazine, its kits or supplements is prohibited. We don't mind if you make a copy of the templates for a friend but please do not make any part of the templates or instructions available to others through your website or a third party website, or copy it multiple times without our permission. Please respect one another's copyright.

**CROCHET MITTENS** 

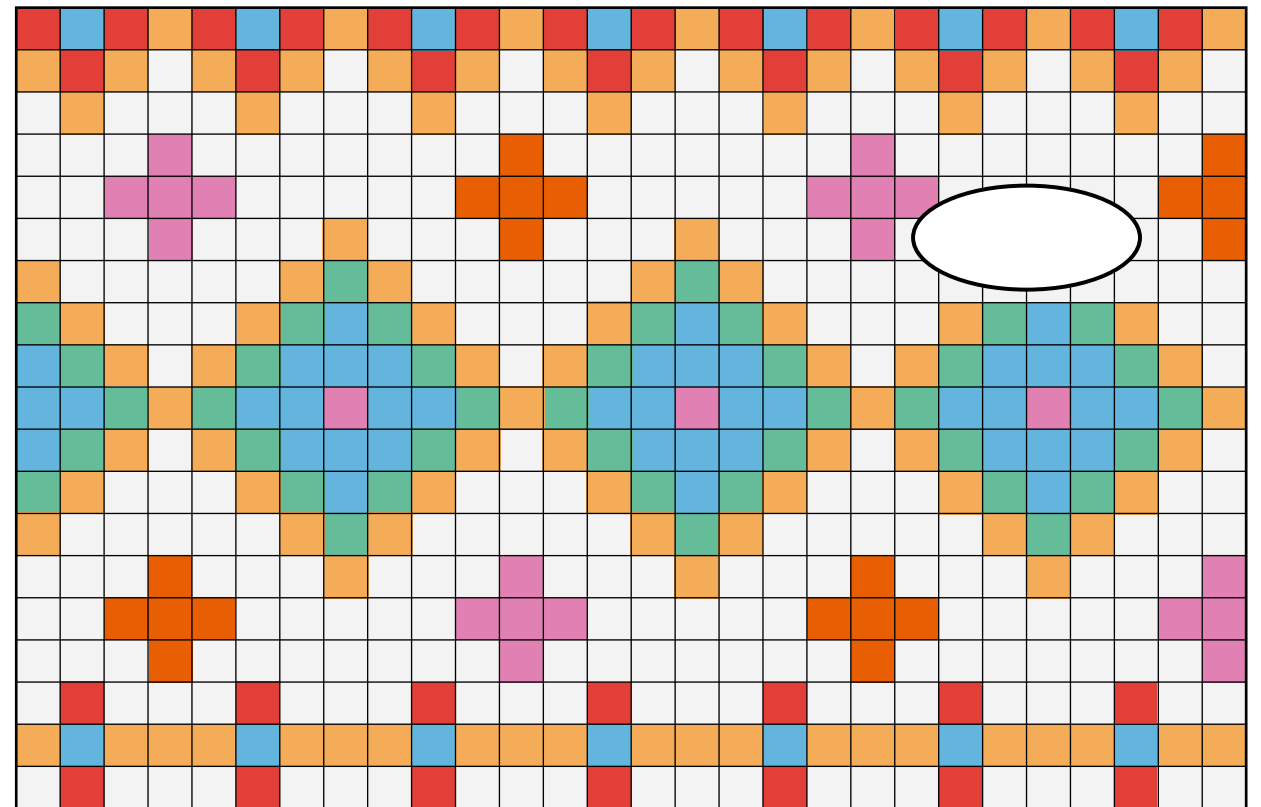
BY KIRSTEN BALLERING

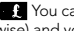
PAGE 14


RIGHT-HAND GLOVE EMBROIDERY CHART



LEFT-HAND GLOVE EMBROIDERY CHART



Thank you for making this project from *Mollie Makes*. We have requested specific permission from designers so that you can recreate and sell selected projects from this issue on the following conditions. Just look for this icon.  You can individually hand-make as many as you wish of our labelled projects, to sell either for yourself, your local event or to raise money for charity. You cannot sell in shops (online or otherwise) and you cannot go into mass production, which means you cannot manufacture in large quantities, especially by machine. Selling photocopies of any part of this magazine, its kits or supplements is prohibited. We don't mind if you make a copy of the templates for a friend but please do not make any part of the templates or instructions available to others through your website or a third party website, or copy it multiple times without our permission. Please respect one another's copyright.

Thank you for making this project from *Mollie Makes*. We have requested specific permission from designers so that you can recreate and sell selected projects from this issue on the following conditions. Just look for this icon.  You can individually hand-make as many as you wish of our labelled projects, to sell either for yourself, your local event or to raise money for charity. You cannot sell in shops (online or otherwise) and you cannot go into mass production, which means you cannot manufacture in large quantities, especially by machine. Selling photocopies of any part of this magazine, its kits or supplements is prohibited. We don't mind if you make a copy of the templates for a friend but please do not make any part of the templates or instructions available to others through your website or a third party website, or copy it multiple times without our permission. Please respect one another's copyright.

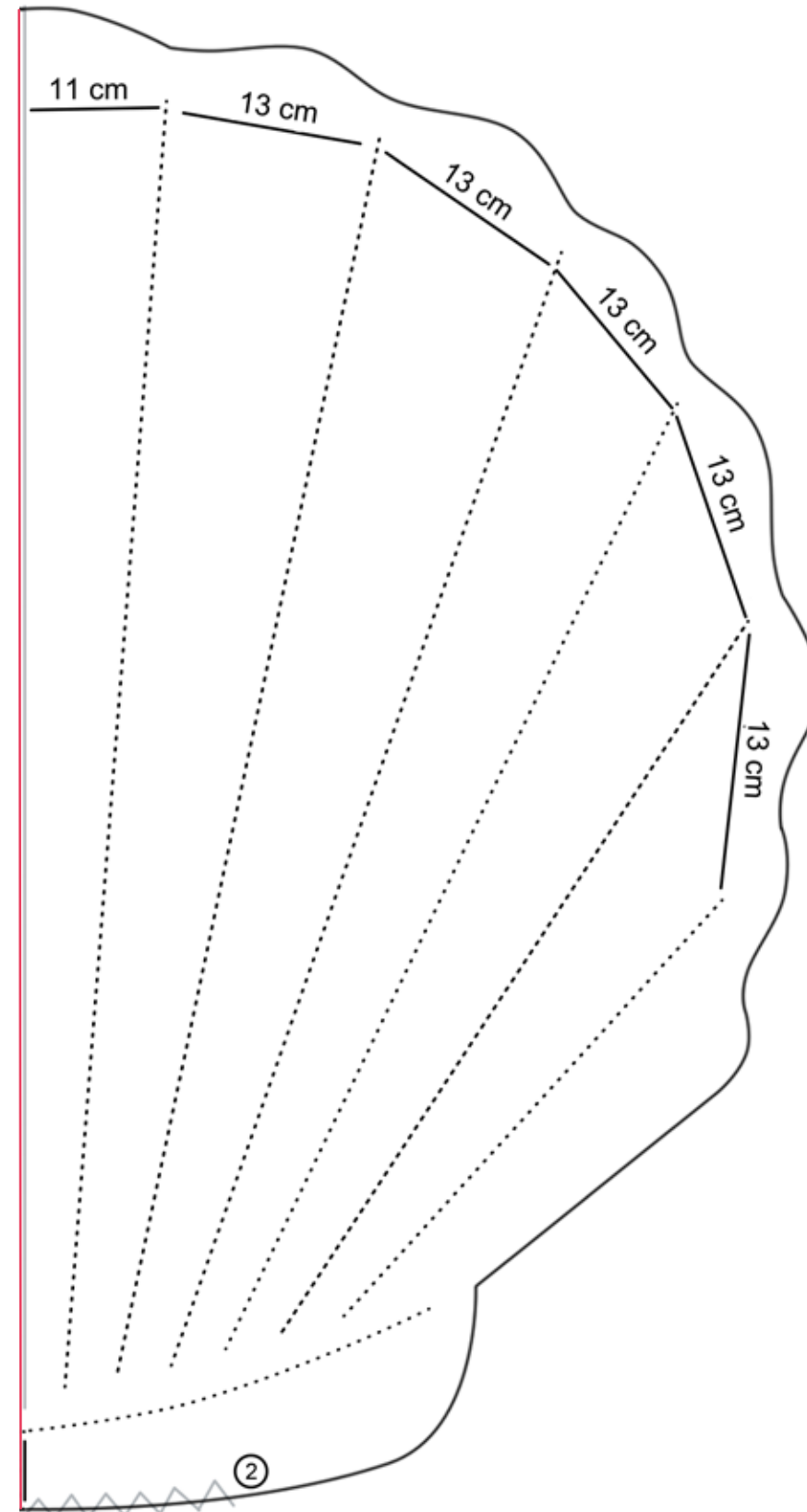
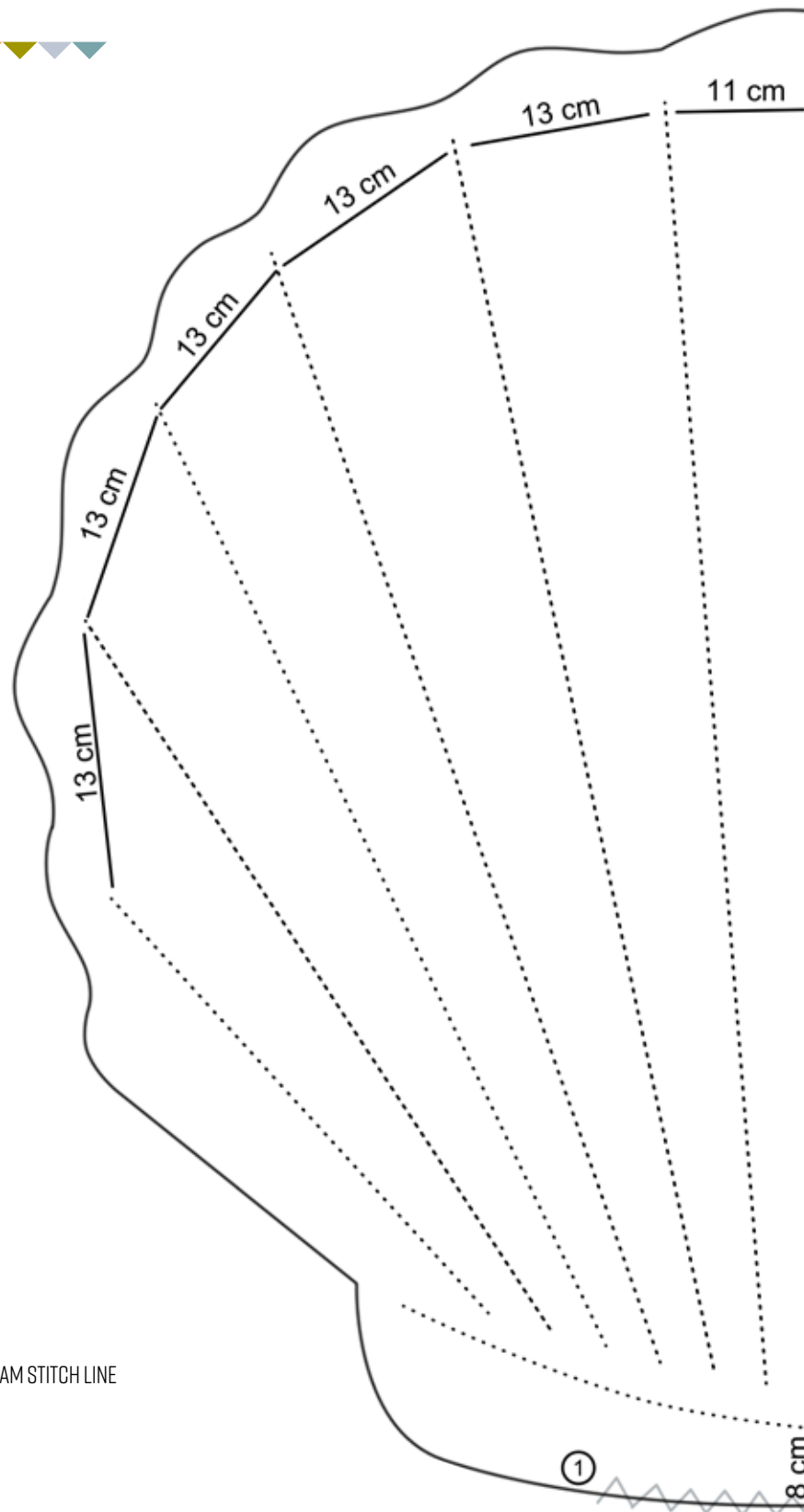


**SHELL PLAYMAT**

BY MARIA BUDINA

PAGE 70

Scale up 400%



**PLAYMAT**  
CUT TWO

JOIN PATTERN PIECES ALONG  
THE RED GUIDELINE

- QUILT LINE
- \_\_\_\_\_ MIDDLE LINE
- \_\_\_\_\_ CUT LINE
- ~~~~~ INVISIBLE SEAM STITCH LINE

Mollie Makes (ISSN 20460228) (USPS 20517) February 2020 is published 13 times a year (monthly, with a Christmas issue in October) by Immediate Media Company Bristol Ltd., Eagle House, Colston Avenue, Bristol, BS1 4ST United Kingdom. Distributed in the U.S. by NPS Media Group, 2 Corporate Dr., Suite 945, Shelton, CT 06484. Periodical Postage paid at Shelton, CT and additional mailing offices. POSTMASTER: Send address change to Mollie Makes, Immediate Media, 2900 Veterans Highway, Bristol, PA 19007, USA

**EDITORIAL**

Editor Yvette Streeter  
Art Editor Sarah Malone  
Commissioning Editor Lindsey Newns  
(on maternity leave)  
Acting Commissioning Editor Becca Parker  
Picture Editor Emma Georgiou  
Digital Content Editor Phoebe Burt  
molliemakes@immediate.co.uk

**ADVERTISING**

Call: 0117 300 8206  
Senior Advertising Manager Penny Stokes  
Client Partnership Manager Beckie Pring  
Senior Sales Executive Emily Williams

**MARKETING & CIRCULATION**

Head of Newstrade Marketing Martin Hoskins  
Newstrade Marketing Manager Janine Smith  
Subscriptions Director Jacky Perales-Morris  
Direct Marketing Manager Penny Clapp

**PRODUCTION**

Production Director Sarah Powell  
Production Managers Louisa Molter/Rose Griffiths  
Production Coordinator Lily Owens-Crossman

**LICENSING**

Director of International Licensing and Syndication  
Tim Hudson tim.hudson@immediate.co.uk

**BUYING TEAM**

Paul Torre, Karen Flannigan, Jennifer Morgan

**MANAGEMENT**

Managing Director, Lifestyle Catherine Potter  
Assistant Publisher, Lifestyle Catherine Dean  
Group Senior Editor Julie Taylor  
Chief Executive Officer Tom Bureau  
Group Managing Director Andy Marshall

**SUBSCRIPTIONS**

For new orders and back issues sales call 03330 162 148 or visit [www.buysubscriptions.com/craft](http://www.buysubscriptions.com/craft). For enquiries relating to your subscription email molliemakes@buysubscriptions.com or call +44 (0) 1604 973 757.

**COPYRIGHT GUIDELINES FOR PROJECTS**

We have requested permission from designers so you can make and sell selected projects on the following conditions. Just look for this icon. Please credit the designer where appropriate and when requested. Mollie Makes encourages creativity and as well as making for gifts and for yourself, we want to help you make small batches of handmade items to sell. You can individually handmake as many as you wish of our labelled projects, to sell for yourself, a local event or to raise money for charity. You cannot sell in shops (online or otherwise) or go into mass production, so you cannot manufacture in large quantities, especially by machine. Selling photocopies of any part of this magazine or its kit is prohibited. Please respect one another's copyright.

Mollie Makes is published by:

**IMMEDIATE MEDIA CO**

Immediate Media Company Limited, 2nd Floor, Tower House, Fairfax Street, Bristol, BS1 3BN. Tel: 0117 927 9009

We abide by IPSO's rules and regulations. To give feedback about our magazines, please visit [immediate.co.uk](http://immediate.co.uk), email [editorialcomplaints@immediate.co.uk](mailto:editorialcomplaints@immediate.co.uk) or write to Yvette Streeter or Katherine Conlon, Immediate Media Co., Vineyard House, 44 Brook Green, London W6 7BT.

Immediate Media Company Bristol Limited (company number 05715415) is registered in England and Wales. The registered office of Immediate Media Company Bristol Limited is at Vineyard House, 44 Brook Green, London W6 7BT. All information contained in this magazine is for information only and is, as far as we are aware, correct at the time of going to press. Immediate Media Company Bristol Limited cannot accept any responsibility for errors or inaccuracies in such information. Readers are advised to contact manufacturers and retailers directly with regard to the price of products/services referred to in this magazine. If you submit unsolicited material to us, you automatically grant Immediate Media Company Bristol Limited a licence to publish your submission in whole or in part in all editions of the magazine, including licensed editions worldwide and in any physical or digital format throughout the world. Any material you submit is sent at your risk. Although every care is taken, neither Immediate Media Company Bristol Limited nor its employees agents or subcontractors shall be liable for loss or damage.

