

SYSKOPLAN REPLY CENTER FACILITY MANAGEMENT: FACILITY MANAGEMENT WITH IFMS AND SAP

Our customers benefit from excellent business processes generating high ROI and solutions which safeguard their investment.

THE CHALLENGE

In order to operate successfully on the market in difficult economic conditions, companies must optimize their business processes in relation to real estate and facility management. Numerous requirements must be met in this area: System limits and media discontinuity between construction planning, facility management and rentals have to be overcome, master data efficiently managed and planning and controlling processes made possible. A comprehensive Computer Aided Facility Management (CAFM) system offers companies optimal support and, by reducing expenditures, contributes to the success of the company. As a market-leading ERP solution for larger medium-sized companies and large corporations, the SAP modules RE-FX and PM/CS provide flexible standard software for business process execution in the technology, infrastructure and commercial sectors with the following benefits:

- Improved cost transparency,
- Increased planning and budgetary stability,
- Lowering process costs by streamlining workflows and utilizing the integrated SAP modules RX-FX, PM/CS, PS, MM, HCM, and FI-CO,
- Lower resource consumption through source-based cost input and cost allocation,
- Lowering operating costs based on optimized use,
- An optimized IT landscape based on consolidated systems,
- Development of a central system with all FM-relevant data.

THE BUSINESS UNIT

The Syskoplan Reply Center Facility Management is an independent department within Syskoplan Reply. The real estate and facility management subsidiaries of large corporations rely on Syskoplan Reply's consulting services and integrative software solutions. Our customers benefit from industry-leading business processes generating high ROI and from solutions which safeguard their investment.

THE SOLUTION

Real estate and facility management business processes based on SAP are optimized by integrating CAD, graphics design and planning functions. Special business processes not supported by SAP are implemented based on complementary software products. Syskoplan Reply offers customers a comprehensive service portfolio including professional, uniquely customized services and industry-tested standard products. Our services cover:

- Introduction of the iFMS system which complements SAP,
- Scalable system integration of iFMS with CAD, SAP RX-FX, PM/CS, MM, HCM, FI-CO,
- Planning/design and implementation of data management processes (CAD/SAP RE-FX/SAP PM/CS) without media discontinuity and of system-wide business processes in technical, infrastructure and commercial facility management (iFMS/SAP RE-FX/SAP PM/CS),
- Functional enhancements in SAP based on special CAFM software modules,
- Web-based import of CAD/CAFM data,
- Supplying CAFM solution service (“Software as a Service” for facility management).

The solution iFMS – integrated Facility Management System – was specially developed by Syskoplan Reply Center Facility Management as a system for complementing SAP. Together, SAP and iFMS offer a holistic CAFM system with a high degree of system integration and high ROI.

THE BENEFIT

Integrating iFMS with SAP into one system optimizes your processes. You benefit from the simple and fast iFMS-based SAP data storage, a larger SAP feature set via complementary iFMS modules and versatile graphic display options offered by the solution. Your benefits at a glance:

- Saving time, improvements in quality and lower costs resulting from the graphics and functional enhancements integrated within SAP in the technical, infrastructure and commercial areas
- Excellent business processes and comprehensive use of SAP and graphic information without long periods of introductory training or familiarity with CAD. Increases in overall system utilization and acceptance
- Lower costs driven by the replacement of isolated solution silos and custom developments with the certified iFMS standard software
- Short project execution times due to scalable SAP integration and the option of using the solution as a software service
- Cost savings for SAP or iFMS update releases, because product development of the iFMS-SAP integrated system is included in the iFMS maintenance agreement.

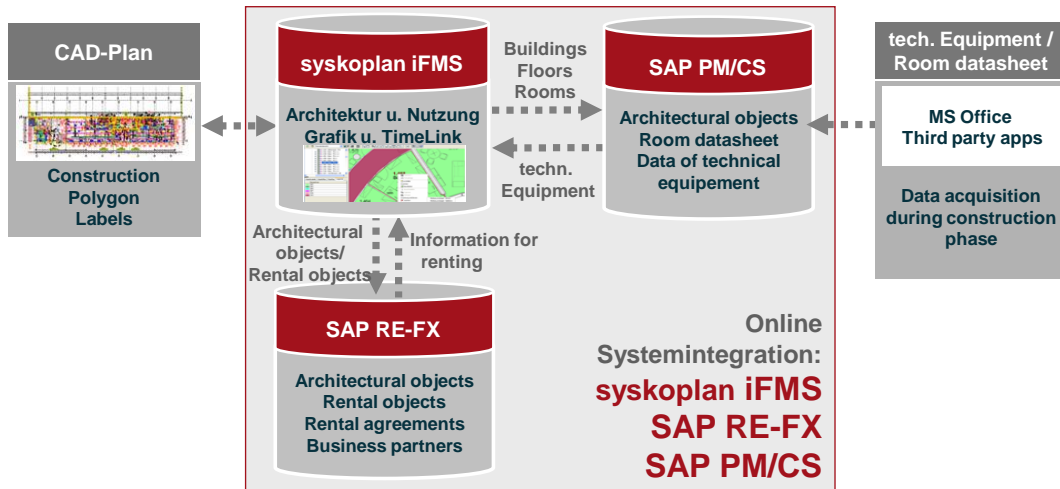


Figure 1: Data transfer from the construction planning to the facility management and renting

OUR REFERENCES

MTU FRIEDRICHSHAFEN/TOGNUM AG

- Architecture data management (AutoCAD/iFMS/SAP) without media discontinuity,
- Space management,
- Cost allocation,
- Janitorial/cleaning management,
- Occupancy/relocation management,
- Parking space management,
- Integration of iFMS with SAP PM/CS, MM, HCM, BW, FI-CO.

UNIVERSITY OF KASSEL

- Architecture data management (AutoCAD/iFMS/SAP) without media discontinuity,
- Space management,
- Janitorial/cleaning management,
- Key management,
- Key return reminders,
- Integration of iFMS with SAP PM/CS and HRZDB/student administration.

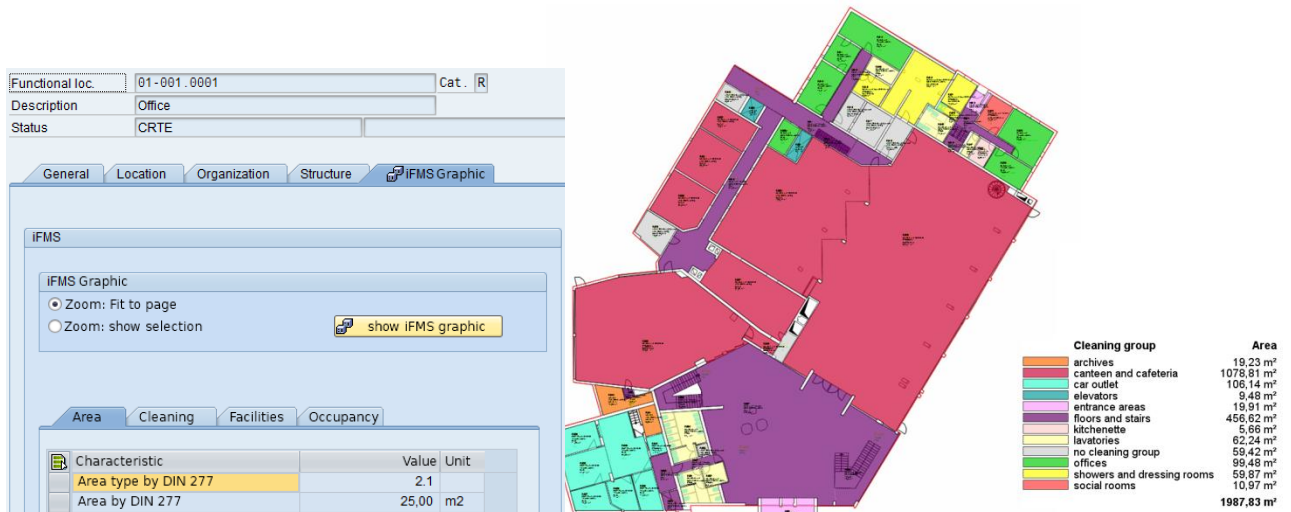


Figure 2: SAP room book with integrated iFMS graphic and automatically generated legend

AUSTRIAN NATIONAL BANK

- Architecture ,
- data management (AutoCAD/iFMS/SAP) without media discontinuity,
- Space management,
- Janitorial/cleaning management,
- Occupancy/relocation management,
- Goods receipt with automated CAD object generation,
- Inventory management,
- Asset locations, supply and data entry areas,
- Security zones,
- Integration of iFMS with SAP PM/CS, MM, FI-CO, HCM, BW.

VIENNA INTERNATIONAL AIRPORT

- Architecture data management (AutoCAD/iFMS/SAP) without media discontinuity,
- Graphic support of own rentals and letting processes,
- Generating notifications and orders and visualization, asset locations,
- Terminal operation,
- Integration of iFMS with SAP RE-FX, PM/CS.

MUNICH RE

- Architecture data management (Drawbase/iFMS/SAP),
- Space management,
- Occupancy/relocation management,
- Inventory management,
- Furniture for events,
- Integration of iFMS with SAP PM/CS, MM, HCM.

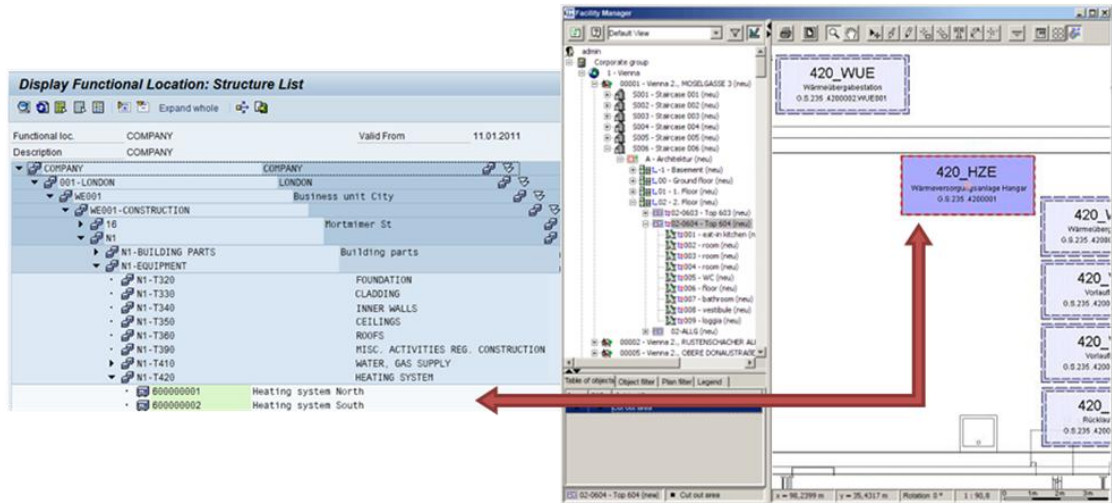


Figure 3: Combination of the DIN 276 and DIN 277-structures



Syskoplan Reply is a leading IT services provider in the SAP environment and develops innovative, flexible and reliable IT solutions, particularly in the areas of Customer Relationship Management (CRM), Business Intelligence (BI) and Facility Management (FM). We implement innovative IT solutions, using adaptable and agile IT platforms extended with customer-specific components. This enables our customers to differentiate in the market and create sustainable competitive advantages. In addition, our customers benefit from our close partnership with SAP, strong industry knowledge and our partnership based collaboration. The inclusion in the network of the European IT service provider Reply opens up access to the knowledge of over 3,000 IT experts. In 2010, the Reply network of companies had a turnover of approx. 384 million euros in the main offices in Italy, Germany and the United Kingdom. For further information visit www.reply.de

Syskoplan Reply
www.reply.de