



# Deforestation – the case for action

Sustainable Palm Oil Food Forum

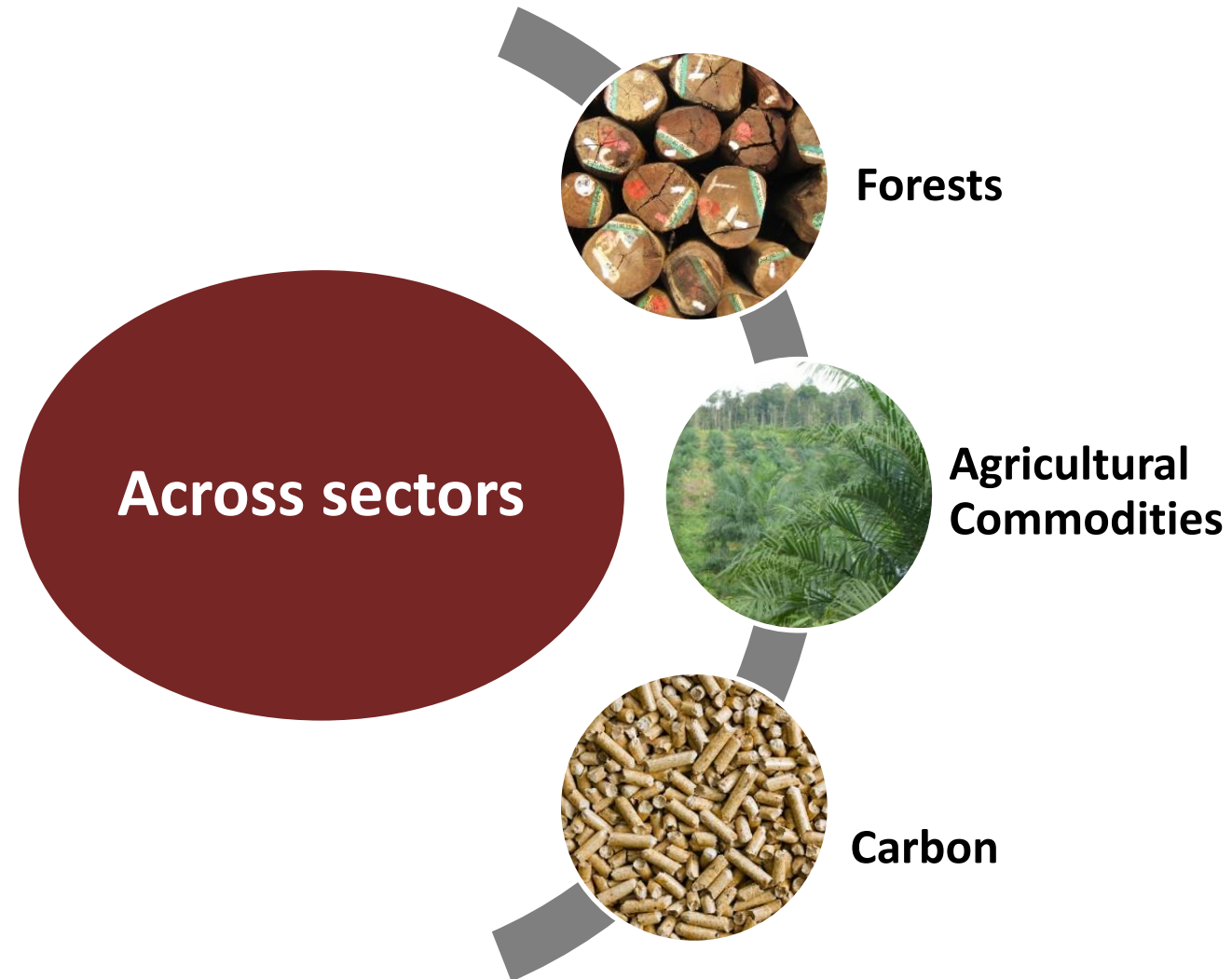
TUCO

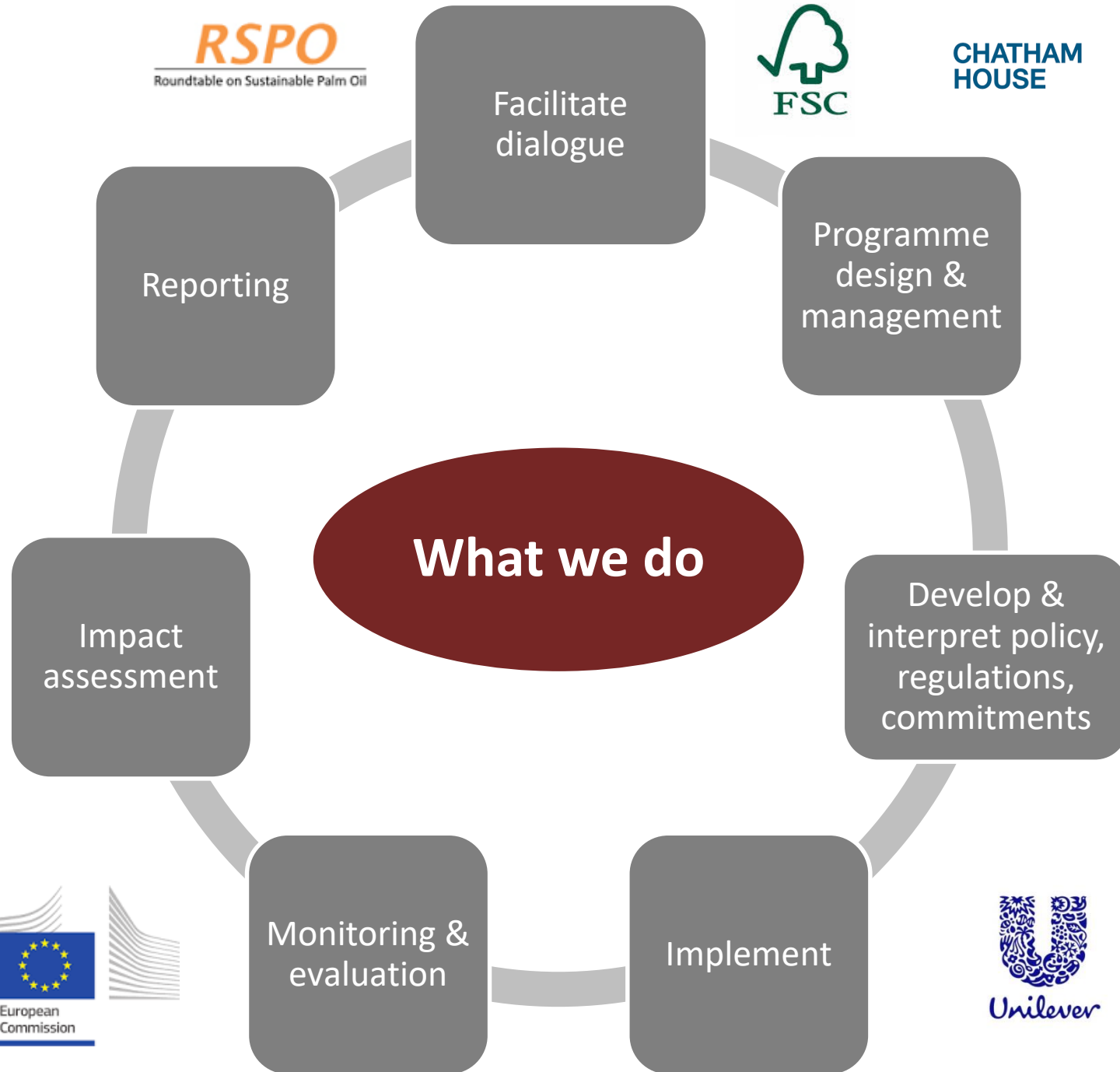
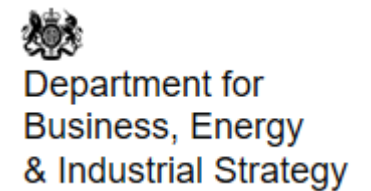
**Jonathan Gorman, Efeca**

5<sup>th</sup> February 2019

# Efeca - about us

- Independent consultants
- Founded in 2009
- Interface of public & private sector globally
- Support development & implementation of policies & regulations
- Monitor, evaluate & report
- Sharing lessons & linkages







# Deforestation



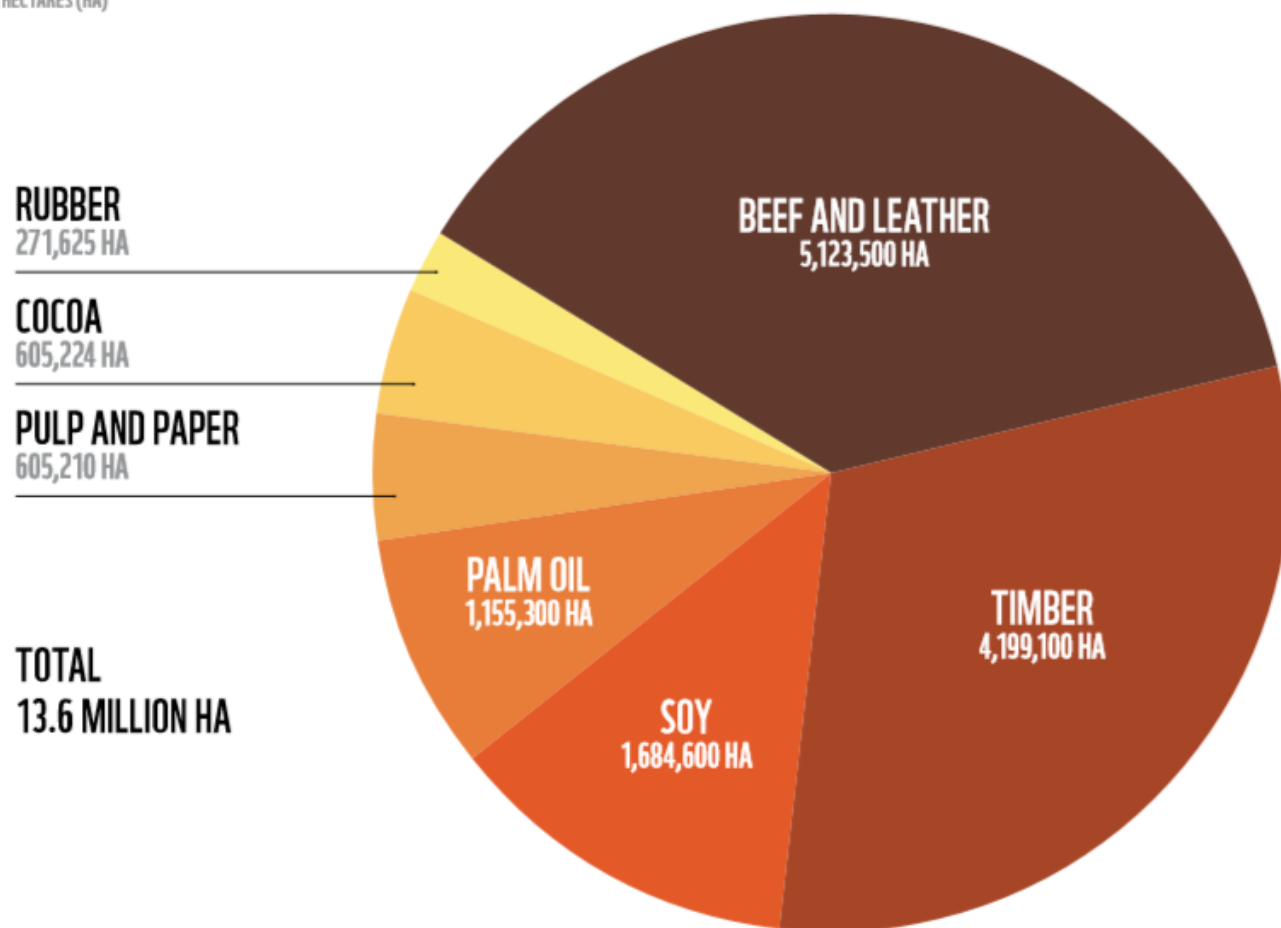
Current global action to tackle CO<sub>2</sub> emissions **will not limit global warming to the agreed 1.5°C.**

Intergovernmental panel on climate change (IPCC) October 2018

Sustainable land use could provide **up to one third** of the greenhouse gas (GHG) mitigation required by 2030

# UK's overseas land footprint

FIGURE 1:  
AVERAGE TOTAL ANNUAL FOOTPRINT  
PER COMMODITY, 2011-15  
ALL FIGURES IN HECTARES (HA)



More than 40% of the UK's overseas land footprint (nearly 6 million hectares) is in countries at high or very high risk of deforestation, with weak governance and poor labour standards.

# Palm oil



**Shaving products & cosmetics**

**Household cleaning products**

**Chocolate bars, biscuits & ice-cream**

**Cereal, breakfast bars & doughnuts**

- The most widely grown and widely used veg oil globally
- Nearly two-thirds of UK palm oil is from Indonesia and Malaysia, also Papua New Guinea
- Expansion of palm oil production in last 30 years has been linked to:
  - deforestation
  - land grabbing
  - forced labour and other abusive practices particularly affecting migrant workers

# Soya



**Poultry**

**Pork**

**Eggs**

**Dairy**

- 90% of soy imported into Europe is used in animal feed, mostly from South America and USA
- Soya expansion has led to deforestation, in the Amazon and more recently in areas outside the Amazon such as the Cerrado
- Expansion has also been associated with poor labour conditions and violations of human rights in Brazil and Paraguay, and concerns around safe application of agrochemicals.



# The case for action

---

- Acting responsibly within your supply chains
  - playing your part
- Business continuity
  - ensuring resilient, secure supplies of food and food ingredients for your business for the future
- Customer and employee expectations
  - demonstrating you are a responsible employer/business



# What can I do as a businesses?

## Iceland



Certified sustainable palm oil



UK Roundtable on Sustainable  
**Palm Oil**



UK Roundtable on Sustainable  
**Soya**

# Working across Europe



**Denmark**  
**France**  
**Germany**  
**Italy**  
**Netherlands**  
**Norway**  
**United Kingdom**



**Amsterdam  
Declarations  
Partnership**

# Taking action – key messages

---

- The case for action on deforestation is clear
- Business, consumers, government, civil society – we all have a role to play
- You don't need to be an expert – there is support available
- Palm oil is ubiquitous – it *will* be important to your business
- Palm oil can be grown in a sustainable way

**Thankyou**

[Jonathan.gorman@efeca.com](mailto:Jonathan.gorman@efeca.com)

[Emily.fripp@efeca.com](mailto:Emily.fripp@efeca.com)