



Selmon West Extension Design-Build Industry Forum

March 10, 2016

Disclaimer Statement

At this meeting THEA will provide information about the project's delivery goals, anticipated scope and anticipated Design-Build procurement process. Participants will be encouraged to ask questions during this meeting; however **any information provided by THEA shall be considered as informational only and is subject to change.**

Agenda

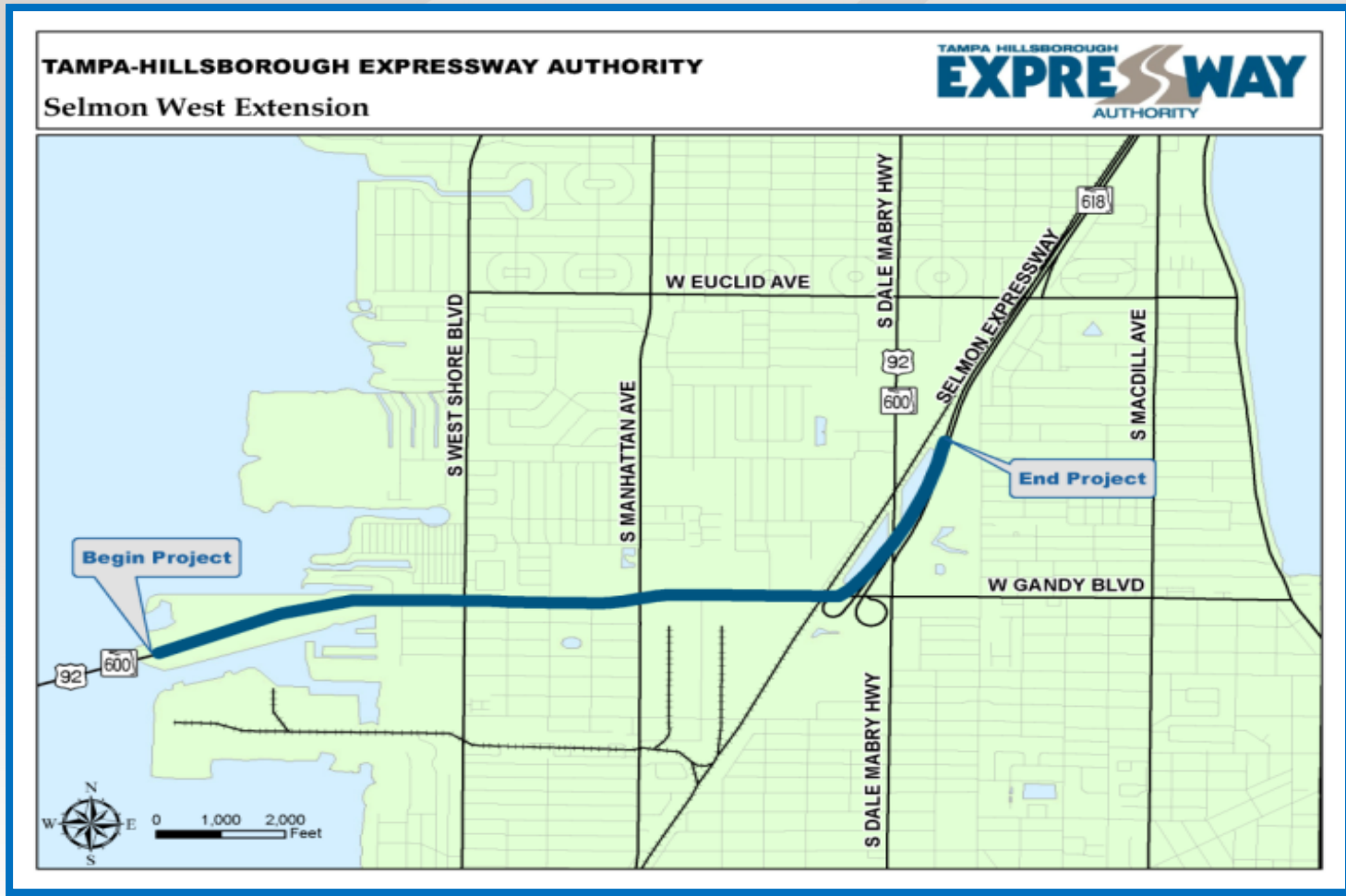
- Project Overview
- THEA Goals
- Available Reference Documents
- Anticipated Procurement Process
- Selection Criteria
- Proposal Evaluators
- Anticipated Schedule
- Advertisement
- Open Discussion

Project Overview

Selmon Expressway Extension

- Project extends from east of the end of the existing Gandy Bridge to the south end of the Selmon Expressway
- Elevated structure with approximately 30' vertical clearance located within the median of Gandy Blvd. providing a single lane ramp in each direction.
- Access ramps will be provided to and from Gandy Blvd. at the west end and to and from Gandy Blvd./Dale Mabry Highway near the east end

Selmon West Extension



Project Overview (Cont'd)

- Conceptual Plans developed w/SEIR Reevaluation
- THEA preparing Updated Control Survey
- THEA providing Railroad coordination w/CSX
- THEA obtaining preliminary approval of documents
 - Typical Section Package
 - Design Variations
 - Railroad Permits
 - Environmental Permits

2010 SEIR Preferred Alternative



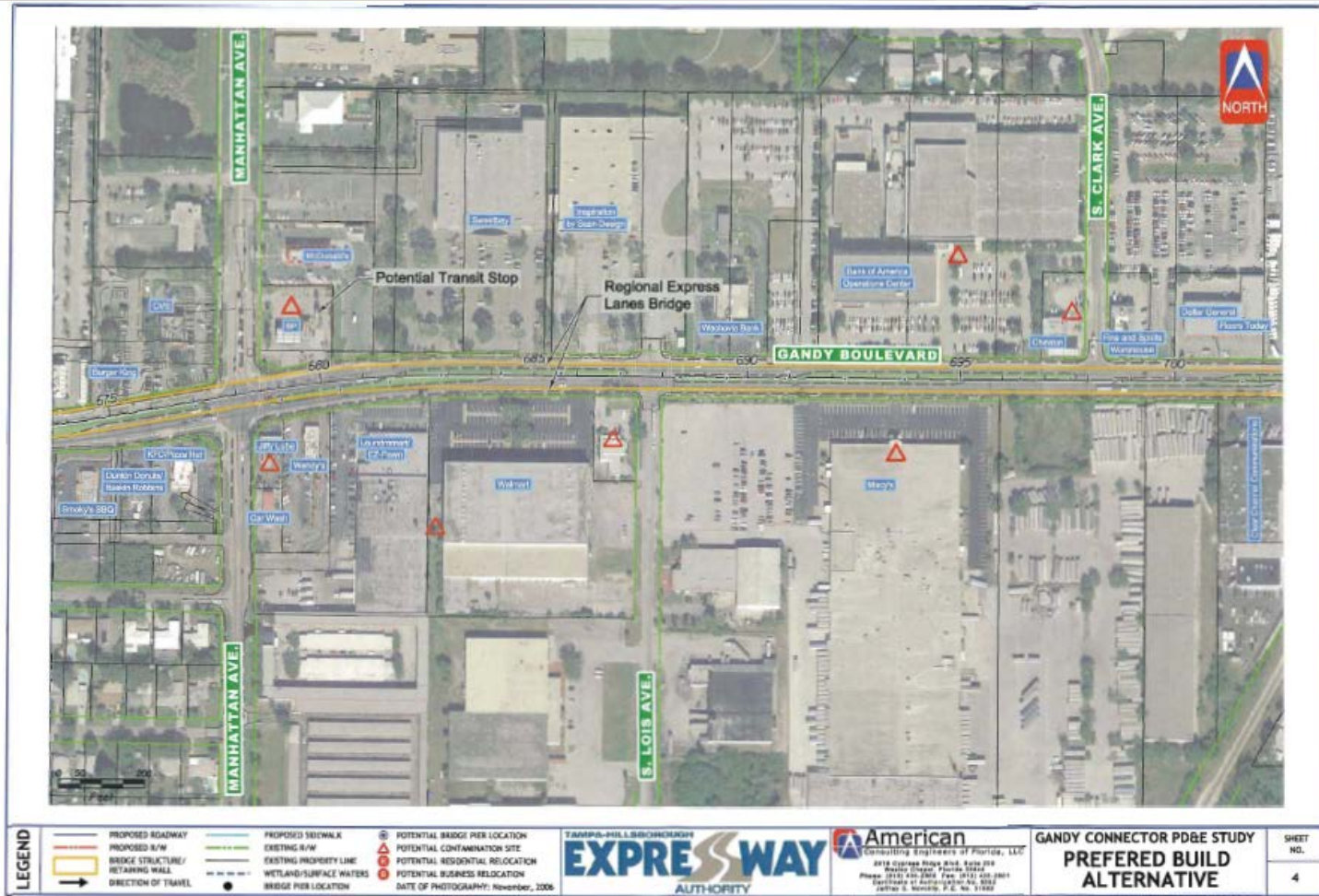
2010 SEIR Preferred Alternative



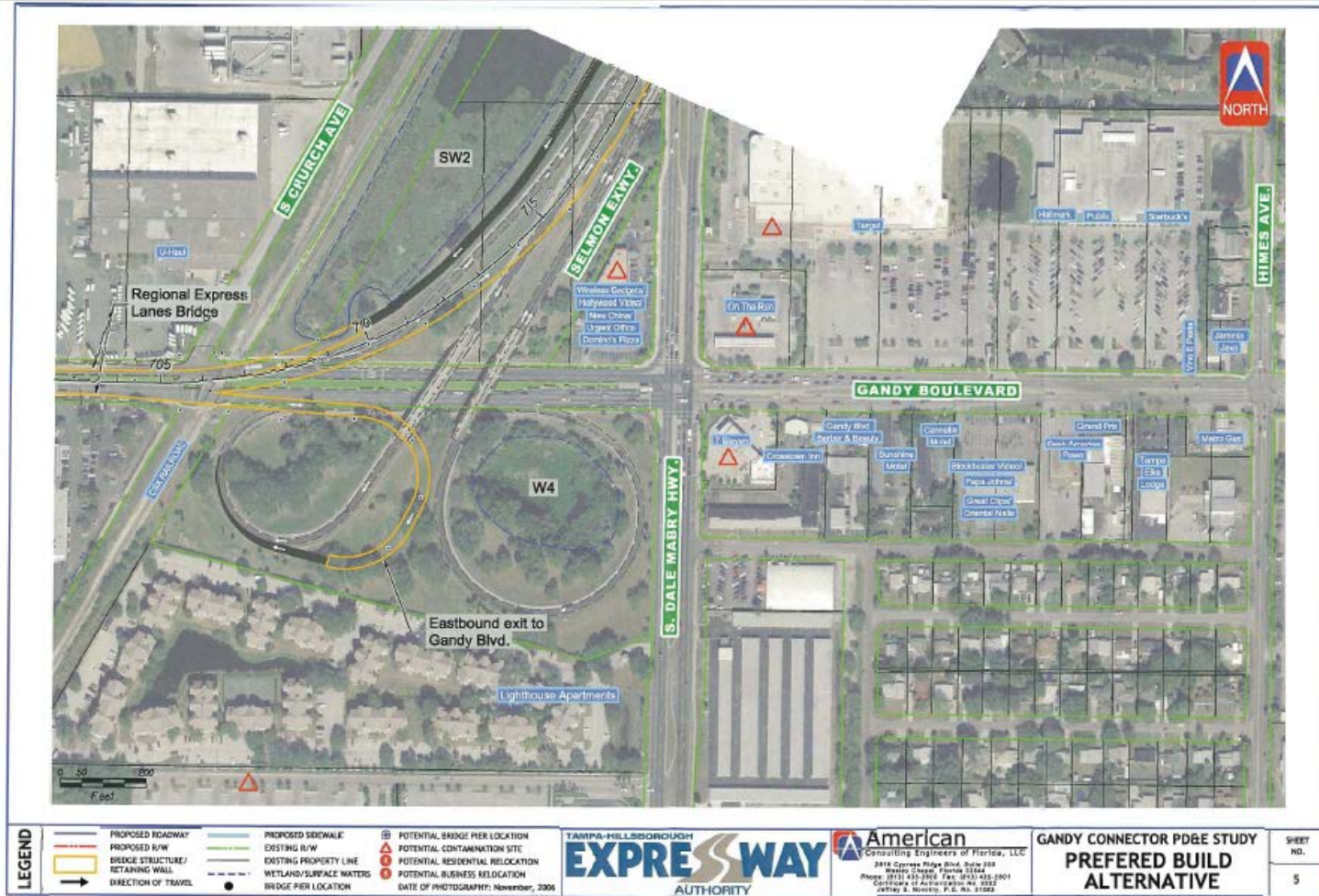
2010 SEIR Preferred Alternative



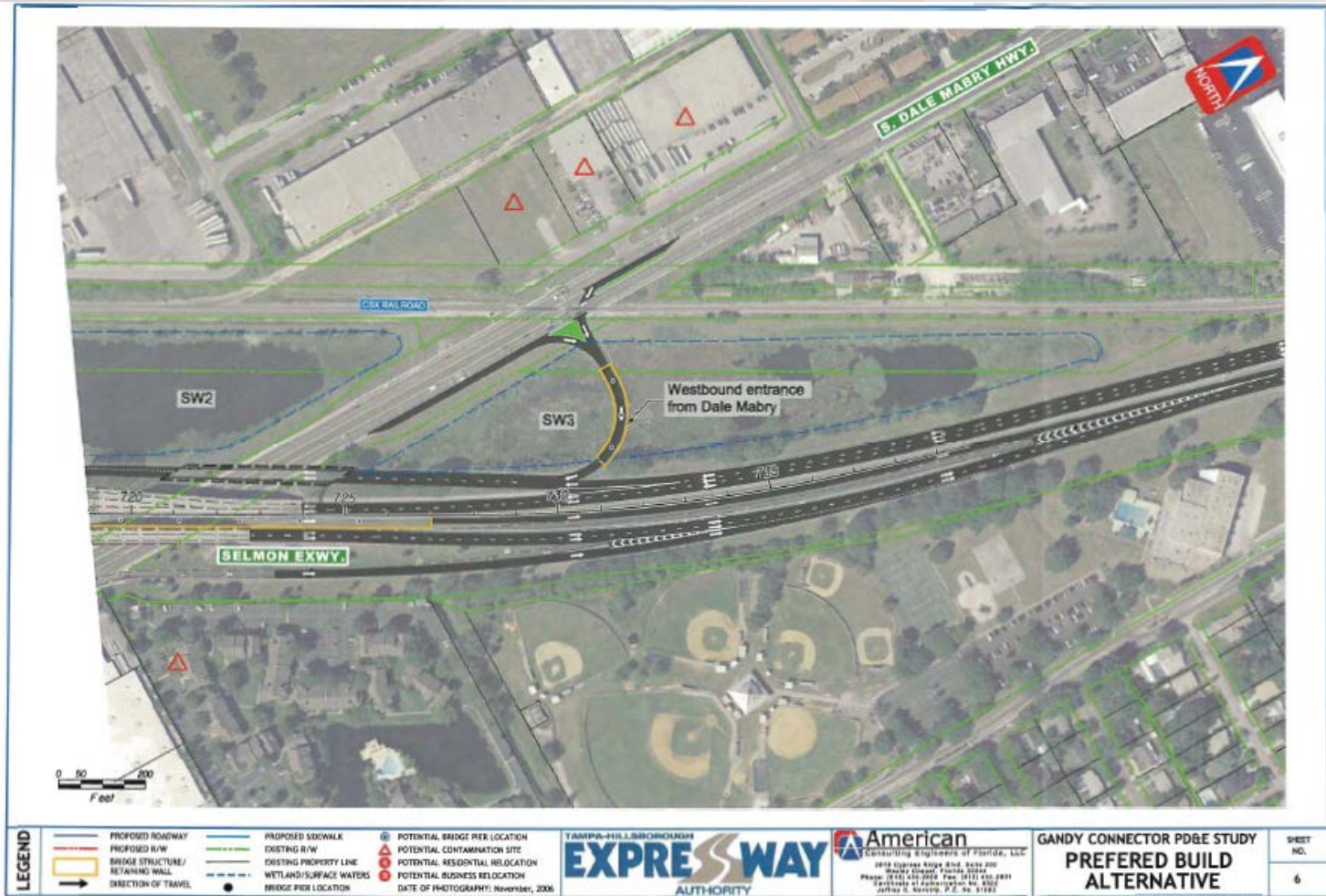
2010 SEIR Preferred Alternative



2010 SEIR Preferred Alternative



2010 SEIR Preferred Alternative



2010 SEIR Preferred Alternative



THEA Goals

- Minimize inconvenience to the traveling public & businesses
 - Minimize detours & lane closures,
 - Efficient Maintenance of Traffic Scheme
 - Minimize construction duration
- Utilize public input on pier & structure aesthetics, landscaping and aesthetic lighting
- Achieve project budget
- Minimal or no ROW acquisition

Available Reference Documents

Current-

- **2010 SEIR**
- **Existing Gandy Improvement Plans (Completed in 2009)**

At RFP-

- **2016 SEIR Reevaluation**
- **Conceptual Plans**
- **Updated Control Survey**
- **Geotechnical Borings at 500' intervals and at Conceptual Plans Pier locations**
- **Design Variations & Typical Section Package**
- **Environmental & Railroad Permits**

Anticipated Procurement Process

- **Adjusted Score Design Build (ASDB)**
- **Similar to FDOT Process**
- **Value of Time Factor**
- **ATCs (Limited to One Round)**

Anticipated ASDB Procurement Process

- **Phase I**
 - **Letter of Interest (10 pages) plus resumes**
 - **Shortlist**
 - **Mandatory Pre-Proposal Meeting**
 - **Stipend for shortlisted firms**
 - **Firm awarded contract will not receive stipend**
 - **Top two non-selected firms will receive stipend**

Anticipated ASDB Procurement Process

- **Phase II**
 - **ATCs**
 - **Technical Proposal**
 - **Technical Proposal Page Turn**
 - **Q & A Session**
 - **Evaluation and Final Ranking of Firms**
 - **Price Proposal**

Selection Criteria

- **Letter of Interest**
 - **Design Build Firm & Prequalification's**
 - **FDOT Contractor & Consultant Grades**
 - **Performance History with THEA & FDOT**
 - **DB Experience of Contractor & Consultant**
 - **Similar Type of Work Experience**
 - **Environmental Record**
 - **Contractor Experience Modification Rating**
 - **Design-Build Firm Organization & Staffing Plan**
 - **Design-Build Firm Coordination Plan**
 - **Understanding of Project Requirements**
 - **Identification of Critical Issues**
 - **Outline for Addressing Critical Issues**

Selection Criteria

- **Technical Proposal Evaluation**
 - **Design**
 - **MOT & Business Impacts During Construction**
 - **Constructability**
 - **Aesthetics, Landscaping & Lighting**
 - **Maintenance**
 - **Design and Construction Staff**
 - **Construction Duration**
 - **Schedule**
 - **SBE Participation**
 - **Utilization of Local Work Forces**
 - **Exceeding Project Goals**

Proposal Evaluators

- **David May, THEA Director of Expressway Operations**
- **Bob Frey, THEA Planning Director**
- **TBD - FDOT Structures Staff Member from Central Office or District 7**

Anticipated Schedule

- **SEIR & Conceptual Plans Approval – Fall 2016**
- **Advertisement – December 2016**
- **Letter of Response – January 2017**
- **Shortlist – Mid-January 2017**
- **Mandatory Pre-Proposal Meeting – Late January 2017**
- **ATCs – Spring 2017**
- **Investment Grade T & R Complete – Spring 2017**
- **Bond Sale - Late Spring 2017**
- **Technical Proposal – Late Spring 2017**
- **Page Turn and Q & A Session – Late Spring 2017**
- **Price Proposal – Late Spring 2017**
- **Anticipated Award date – Summer 2017**
- **Anticipated Execution date – Summer 2017**

Advertisement

- **THEA website, vendor list & public notice monitor**
- **Central FL Community Planning**
- **City of Tampa**
- **Conference on Minority Transportation Officials (COMTO)**
- **Demandstar**
- **Florida Bids Network**
- **Florida Transportation Builders Association (FTBA)**
- **Floridians for Better Transportation (FBT)**
- **Hillsborough County**
- **Local newspapers**

Open Discussion

Q&A

David May P.E.
Director of Expressway Operations
Direct: 813-272-5987
David.May@tampa-xway.com

Man Le
Contracts & Procurement Manager
Direct: 813-272-2307
Man.Le@tampa-xway.com