

# rM2 Template Helper – Manual

Version April 2022 | Windows 10 | suitable for all reMarkable firmware versions

## Installation and program start

Download “<https://www.freemarkabletools.com/download/rM2TemplateHelperInstaller.exe>”. Install the Application. rM2TH automatically generates a folder "C: \ RM2 Template Helper". All templates are saved there.

For support visit our facebook group: [facebook.com/groups/1637442566604503/](https://www.facebook.com/groups/1637442566604503/) **100% FREE** rM2 Template Helper & Custom Screens are completely free for private and commercial use! Please click here to support me via PayPal [www.freemarkabletools.com](https://www.freemarkabletools.com)

**Where can I find my password?**  
*You can find your password on your reMarkable under 'Settings > Help > Copyright and Licenses'.*  
*If you are connected to USB, then use the IP 10.11.99.1. If you are connected via WiFi, then use the IP address that is displayed under the password on your reMarkable. USB connection is more stable.*

**Templates categories**

- Hide the 'Black' category on your reMarkable.
- Hide the 'Custom' category on your reMarkable. *re-upload required*

## Define connection data

Click on "Settings" and enter the IP address and device password. You can find your password on your reMarkable under 'Settings > Help > Copyright and Licenses'.

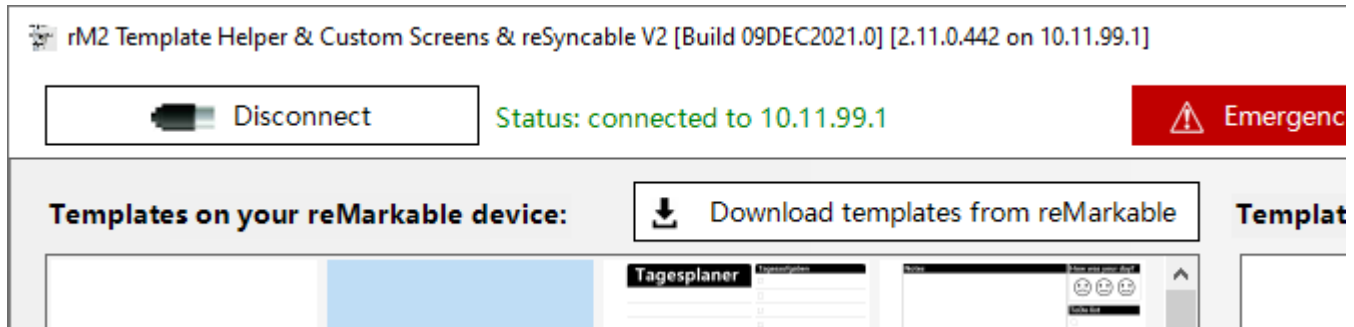
If you are connected to USB, then use the IP 10.11.99.1. If you are connected via WIFI, then use the IP address that is displayed under your password on your reMarkable. USB connection is more stable.

## Backup your data



To connect to your reMarkable, click on "Connect to reMarkable". After a successful connection you should back up your data. To do this, click on "Templates backup". All templates will now be downloaded from the reMarkable and saved as a copy in the folder "C: \ RM2 Template Helper \ Backup".

## Download all templates to your computer



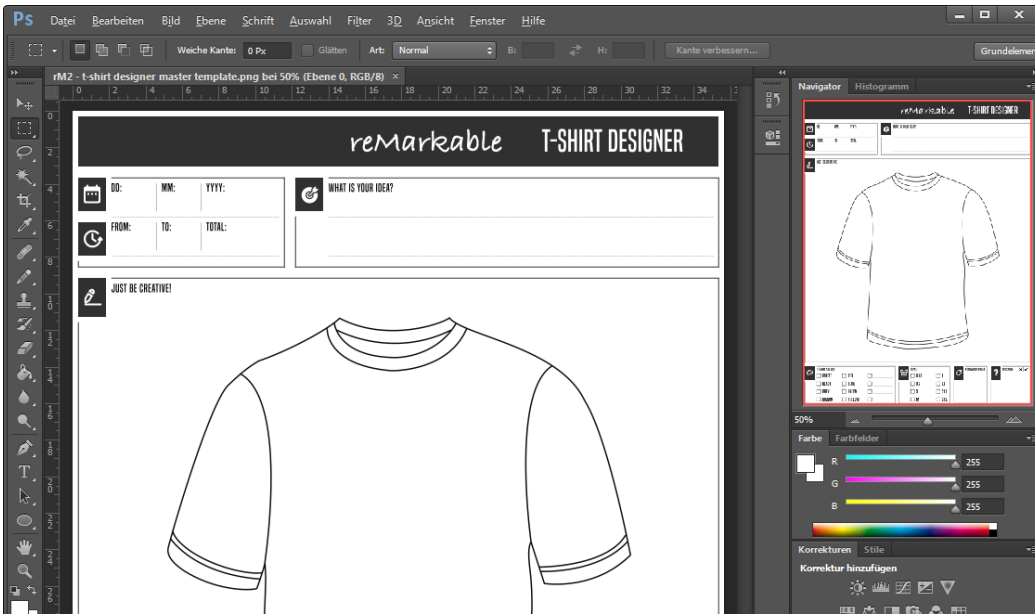
To connect to your reMarkable, click on "Connect to reMarkable". After a successful connection you can download all templates saved on your reMarkable with "Download templates from reMarkable". You will now see the templates saved on the reMarkable. The standard templates can neither be deleted nor changed.

The screenshot shows the software interface with the following elements:

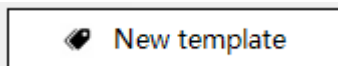
- Top bar: "rM2 Template Helper & Custom Screens & reSyncable V2 [Build 20DEC2021.1] [C:\RM2 Template Helper]"
- Buttons: "Connect to reMarkable" (Status: not connected to 10.11.99.1), "Emergency recovery", "Customizing", "Templates backup", "Settings", "Help".
- Left panel: "Templates on your reMarkable:" with a "Download templates from disc" button. A grid of templates including "Blank", "Dreaming Cat\*", "My Great Day\*", "Netzwerkschema\*", "Millimeter paper\*", "Checklist double", "Checklist", and "Dayplanner".
- Right panel: "Template preview:" showing a preview of the "MY GREAT DAY" template. It includes fields for "Date", "Today's focus", "Important & Urgent", "Family & friends", and "All remaining (organized)".
- Bottom right: "Template name:" (My Great Day), "IconCode:" (Vue9fe), "Common icons:" (empty), "Orientation:" (Portrait selected), "Categories:" (Creative, Grids, Life/organize, Lines, Custom, Black), "Template Editor", "reSyncable V2", "Active: Rolands reMarkable / Cloud", "Edit recently used emails", "Add community template", "Save custom template".
- Bottom left: "New template", "Delete template", "Upload all custom templates".
- Bottom footer: Facebook link, "100% FREE" text, and "Please click here to support me via PayPal" link.

## Create a new custom template

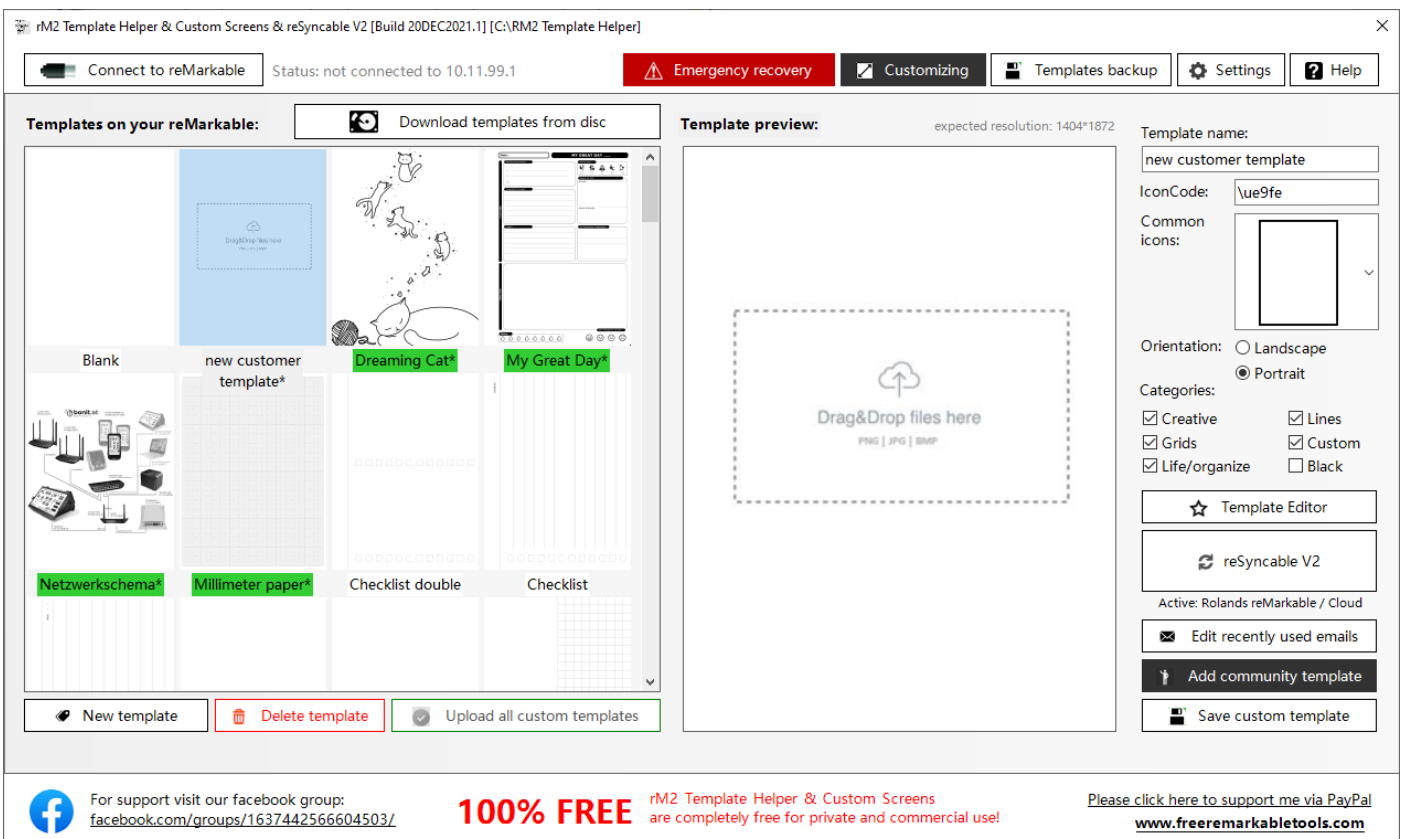
Prepare template: First you should create your template in your favorite graphics program. An image resolution of 1404 \* 1872 pixels is optimal. You can use following file formats: PNG, JPG, GIF, BMP or PDF.



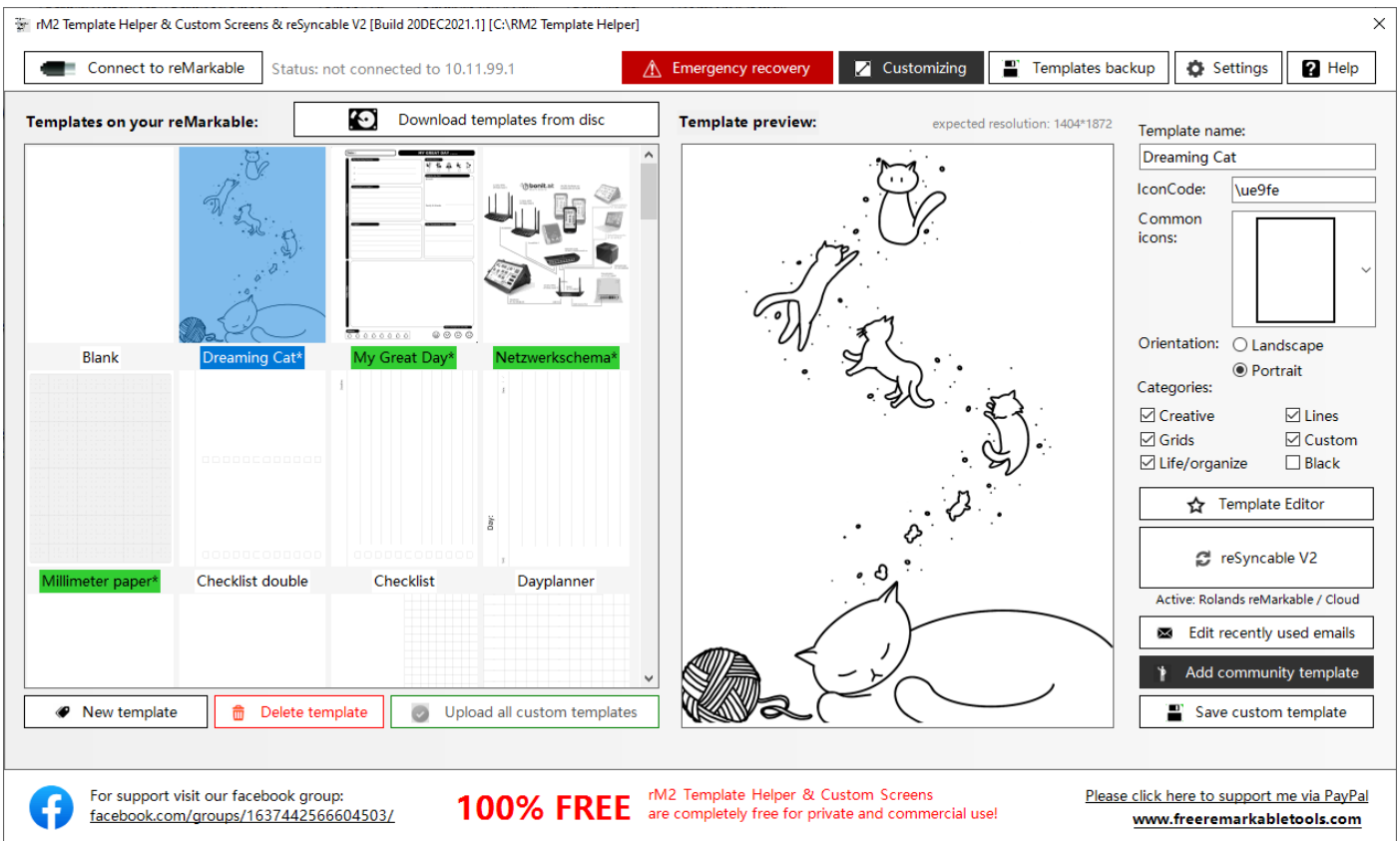
Click on „New template“.



A new template is created.



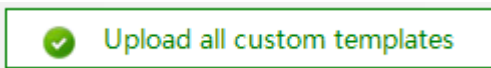
Now drag and drop the prepared image (PNG, JPG, GIF, BMP or PDF) into the application, give the template a name (only letters and numbers, no special characters) and select orientation and categories. With "Save custom template" the template is created and saved.



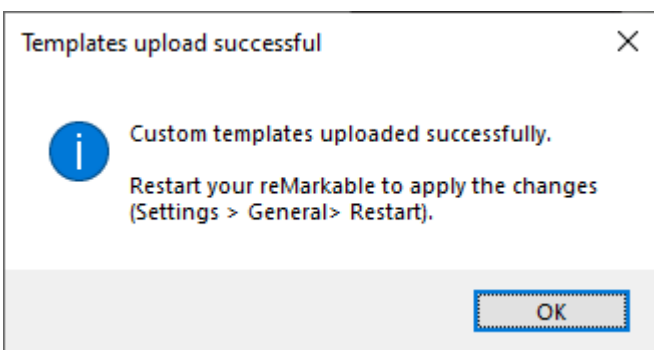
If you want to add more templates, then repeat the steps above.

### Upload your templates to your reMarkable

The previous steps have created all the necessary files and your template collection is ready to be uploaded to the reMarkable. Click on "Upload all custom templates" to upload all of your templates to your reMarkable.



To apply the changes, restart your reMarkable after the upload (Settings> General> Restart).



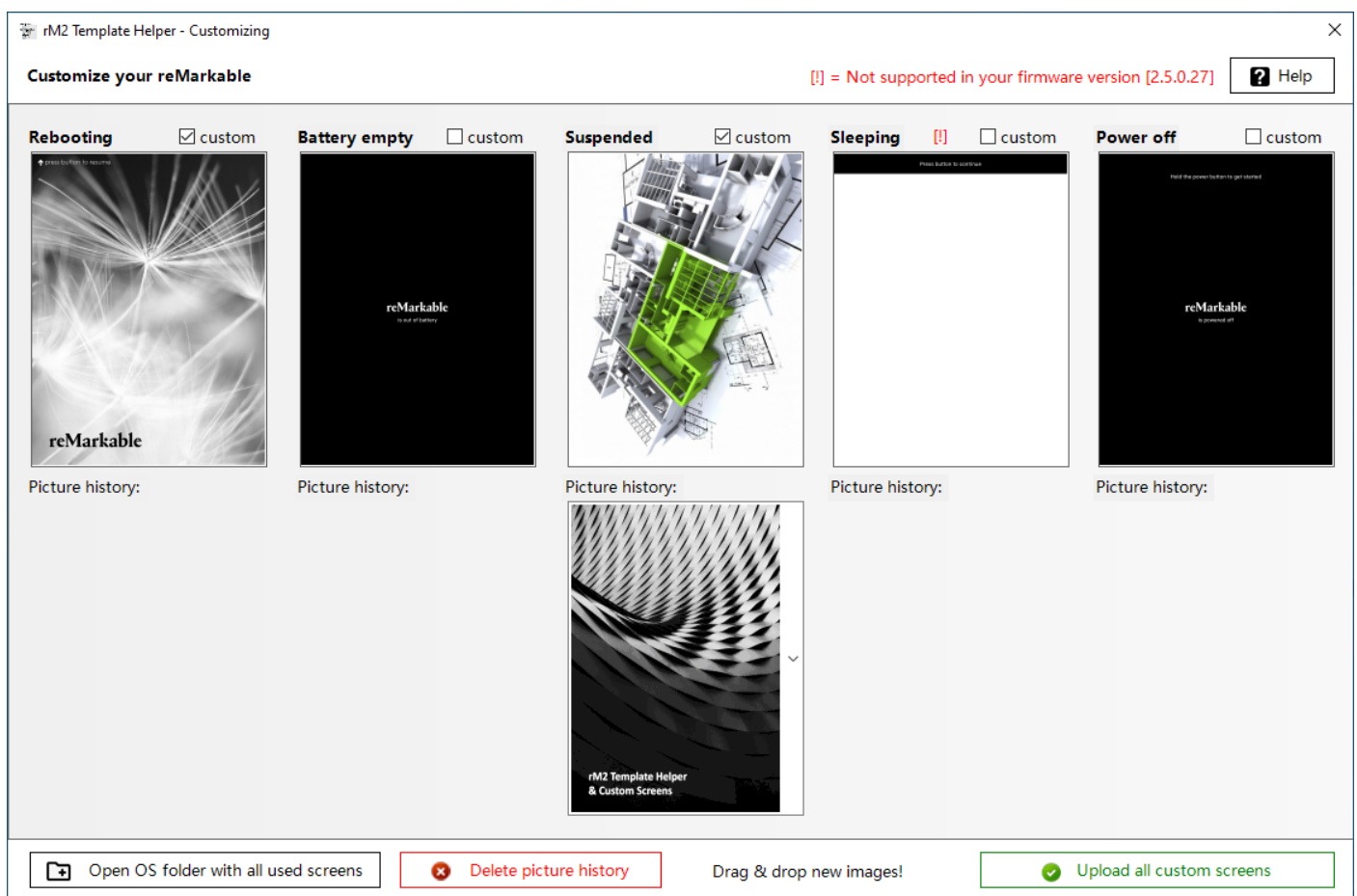
## Create an upload individual screens to your reMarkable 2

Click on  to open customizing form.

For security reasons all default custom screens are stored in the app.

1. Create a new image with the dimensions 1404 \* 1872 pixels. Other resolutions can be automatically reduced / enlarged with the integrated image processor.
2. Drag your picture into the desired area.
3. Choose whether you want to upload your own picture or the original picture. All elements are always uploaded, so always make this selection for all elements.
4. Click on "Upload all custom screens" to upload all elements to your reMarkable 2.

All standard images and all your custom images are saved in the application customscreen folder ("c:\RM2 Template Helper\Customscreens\").



Please note that some custom screens cannot be changed, depending on the firmware version installed on your reMarkable. You can use following file formats: PNG, JPG, GIF, BMP or PDF.

Via the picture history you can reuse all previously used pictures. So you can put together a collection of your most popular screens. With "Delete picture history" you can delete all of these pictures. With "Open OS folder with all used screens" you open the Windows folder where all data can be found. You can also synchronize this folder with any cloud solution.

## Add community templates to your reMarkable 2

What are community templates? These are universal and great templates made available for free by the reMarkable community. You can easily transfer this to your reMarkable.

Click on  to open customizing form.

1. Click on "Download new community templates" to download all available templates to your computer. Since the templates are constantly being added to, you should download them every time. Drag your picture into the desired area.
2. Select a template with a click of the mouse. You can find a preview and information about this template on the right. You can choose the name (English / German) or enter it individually. Be careful not to use any special characters.
3. Click on "Use selected community template" to apply the template to your templates.

Now all you have to do is upload the templates to your reMarkable as described above.

All downloaded images are saved in the application CommunityTemplates folder ("c: \ RM2 Template Helper \ CommunityTemplates \").

rm2 Template Helper - community templates

Community templates

send your own templates to the community Help

Available community templates:

Download / update community templates

Template preview:

Journal Mo Tu We Th Fr Sa Su Date: / /

Schedule

Reminders

Notes

To do:

Name: FMS Journal

Description: Weekly Journal

Author: Francesco M. Sacerdoti

Orientation: Portrait

Initial listing: 14.02.2021

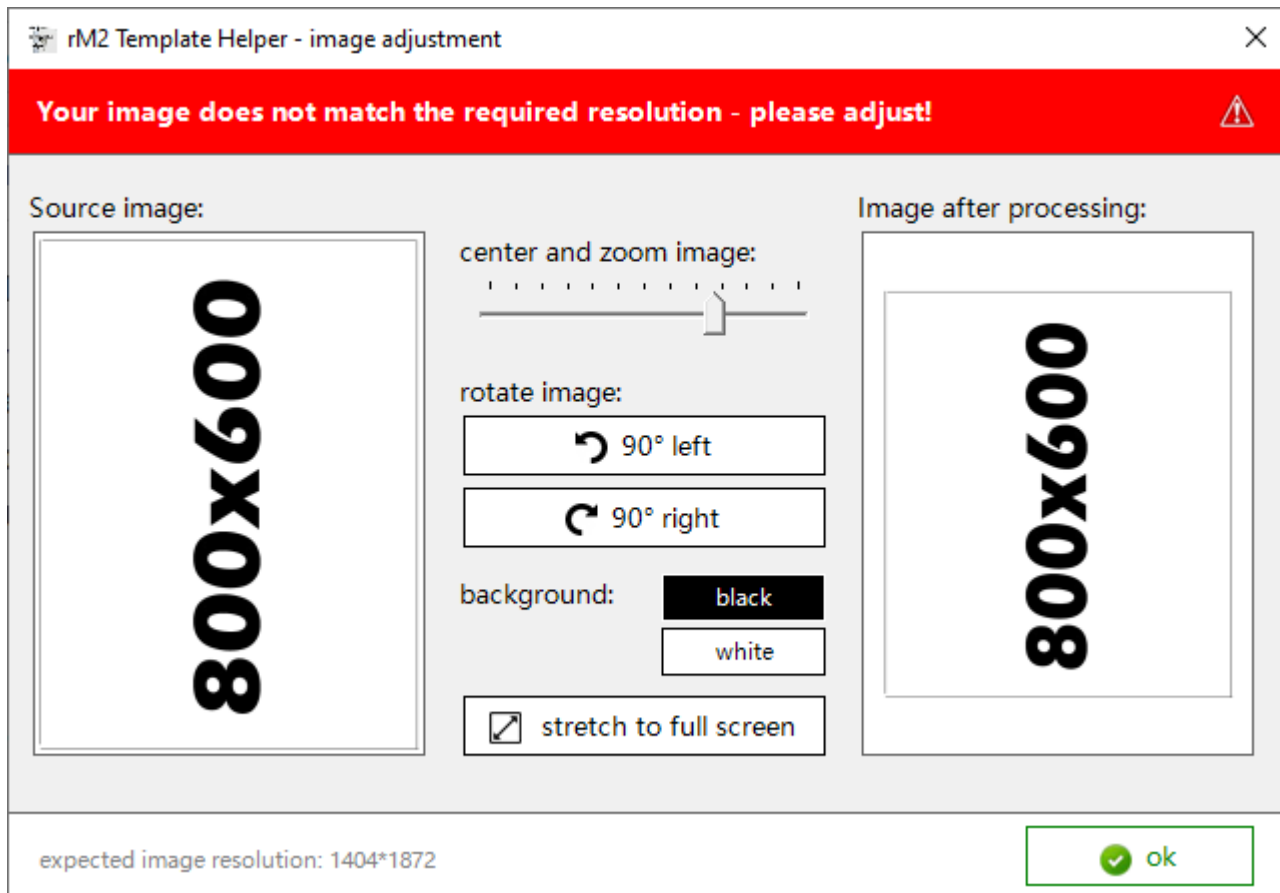
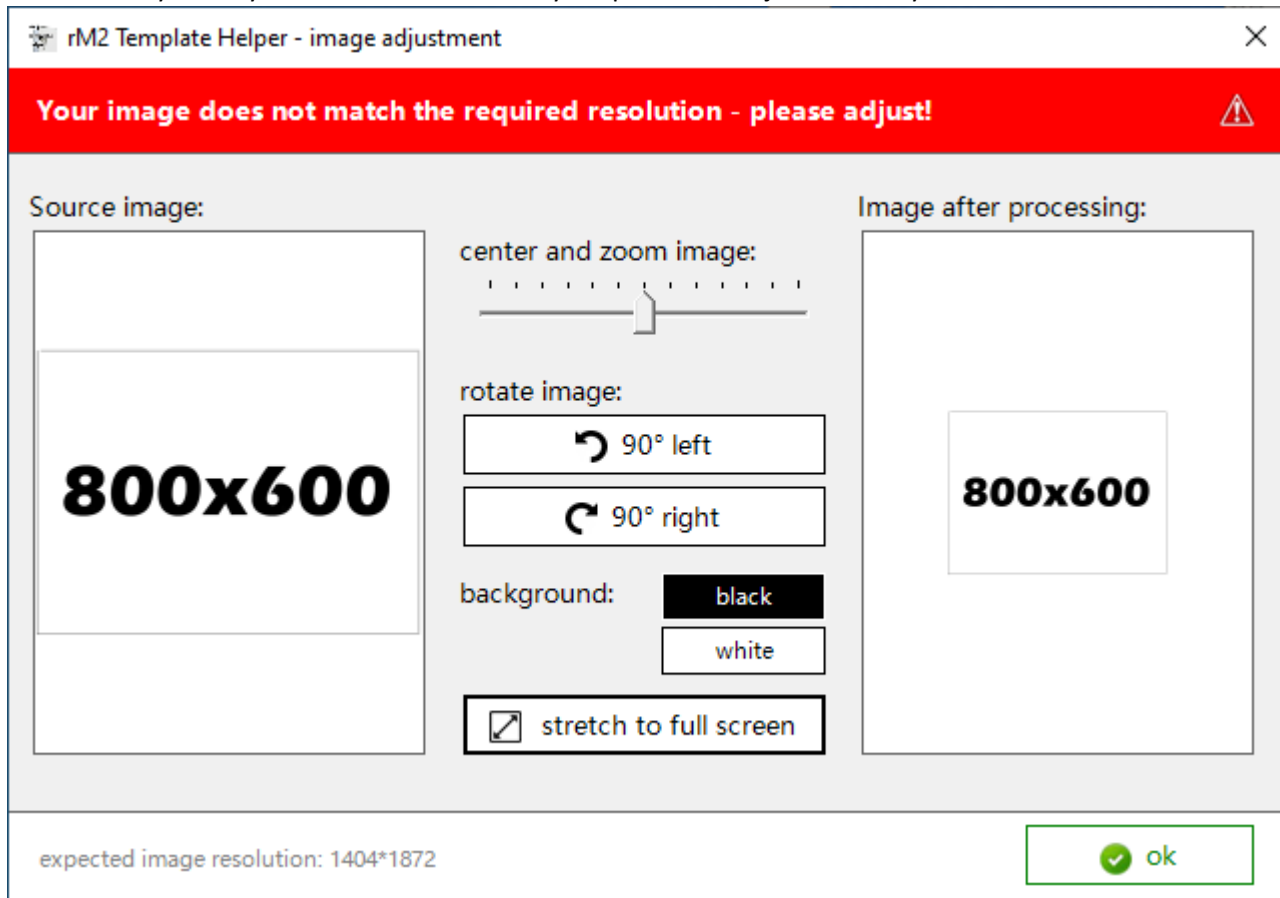
use selected template

For support visit our facebook group: facebook.com/groups/1637442566604503/

Please click here to support me via PayPal www.freemarkabletools.com

## Image processing directly in the rM2 Template Helper application

Sometimes you don't have the opportunity to generate your picture in the optimal resolution (1404x1872). This is not a problem. You can still use it for templates and custom screens. Drag your picture into the application as described above. If it does not meet the resolution specifications, the integrated image processing opens automatically. Here you can rotate and zoom your picture or adjust it exactly to the screen size.

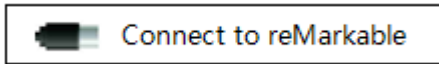


## Recovering backup to your reMarkable 2

If you have deleted the templates information on your reMarkable, you can use these instructions to restore them. Assuming you have made a backup as described on page 2 of the manual.

Copy (not move) all files from the folder "C: \ RM2 Template Helper\Backup" to the folder "C: \ RM2 Template Helper\Templates"

1. Connect to your reMarkable:



2. Click on „Upload all custom templates“



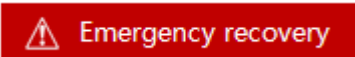
This restored the data status at the time of the backup.

If you do not have a backup, you can ask a friend to send you the folder "Backup" ("C: \ RM2 Template Helper \ Backup") and you can use it to restore the templates.

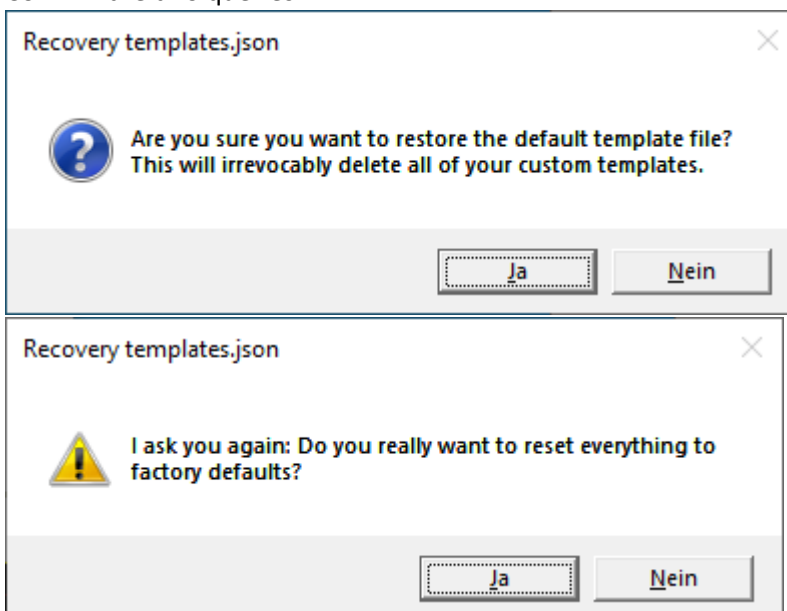
## Recovering factory default templates to your reMarkable 2

If you have deleted the templates information on your reMarkable, you can use these instructions to restore them. Even if you don't have a backup.

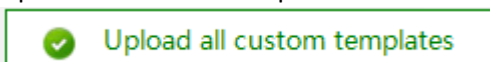
1. Click on “Emergency recovery”



2. Confirm the two queries.



3. Upload the default templates:




Note: This will only restore the template.json. Individual SVG and PNG files cannot be restored with it.

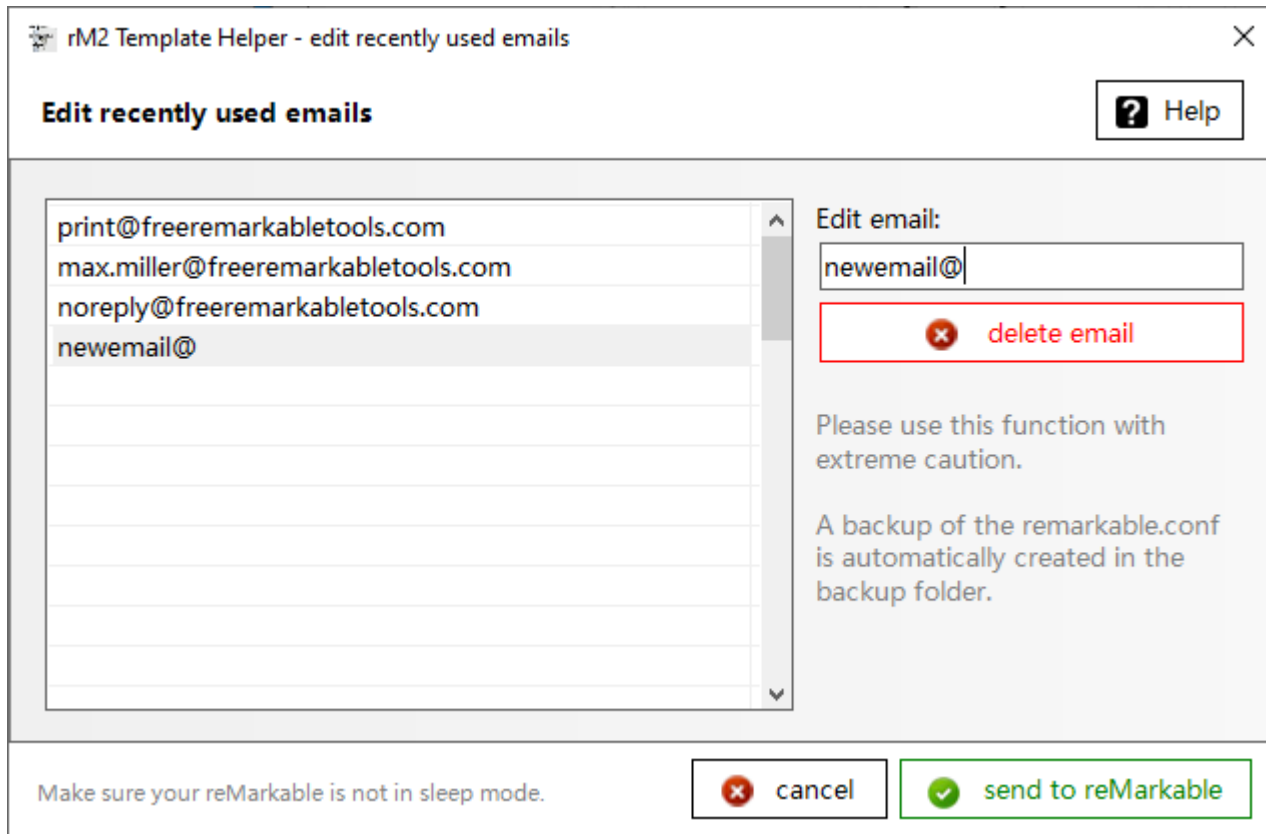


## Change recently used email addresses

This function is actually not intended by reMarkable. Since this function is requested again and again, I have integrated it into the application.

 **Edit recent emails**

Make sure you can connect to your reMarkable and then click the button. All current email addresses are loaded from your reMarkable and displayed. You can change or delete them. Please make sure to only enter valid email addresses. There must also be at least one email address in the list. Unfortunately there is no information on the maximum number of email addresses that the reMarkable can process. You can manage a maximum of 50 addresses in the app.



The screenshot shows a dialog box titled "rM2 Template Helper - edit recently used emails". The dialog has a title bar with a close button (X) and a "Help" button. The main content area is titled "Edit recently used emails" and contains a list of email addresses: "print@freeremarkabletools.com", "max.miller@freeremarkabletools.com", "noreply@freeremarkabletools.com", and "newemail@". To the right of the list is an "Edit email:" field with the text "newemail@" and a "delete email" button with a red 'x' icon. Below the list and edit field, there is a warning: "Please use this function with extreme caution. A backup of the remarkable.conf is automatically created in the backup folder." At the bottom of the dialog, there is a note: "Make sure your reMarkable is not in sleep mode." and two buttons: "cancel" (with a red 'x' icon) and "send to reMarkable" (with a green checkmark icon).



## reSyncable V2 (reMarkable CLOUD) – an additional module



reSyncable V2 is a better document explorer. With reSyncable you can:

- \* Backup your documents from the reMarkable cloud and reMarkable Device
- \* Rename, move, delete, add/remove folder ...
- \* Add new documents via drag and drop (PDF, JPG, PNG, BMP, GIF, TIFF, TXT, RTF – all converted to PDF)
- \* Change the colors of black/gray/highlighter
- \* Open, export and print documents including custom templates and handwritings
- \* and much more

When you start reSyncable for the first time, you have to connect it to your reMarkable cloud. To do this, log into my.remarkable.com, click on "x connected" below "Desktop app", and then on "Connect new desktop". You will receive a one-time code that you enter once in reSyncable.

ONE TIME CODE

Please input reMarkable ONE TIME CODE as shown on the reMarkable Website:

OK

Abbrechen

### Enter one-time code

Enter this one-time code on your reMarkable.  
The code is valid for 5 minutes.

# s b k t p c e i

If this doesn't work, get a [new code](#).

The application should be self-explanatory. It works like a file explorer. We explain the special functions to you on the following page.

reSyncable V2 - the better reMarkable app - reMarkable cloud access

Account Documents PDF export options Help Rolands reMarkable  show thumbnails  list view

**reSyncable** for reMarkable **My Files** Reload all documents Backup device

**My Files**

- Rezepte
- Mama
- GoodTimesProduction
- Import
- Haus und Auto
- rM2TH Allerlei
- Favorites
- CustomScreens
- Community Templates
- CloudBackup
- DeviceBackup
- Trash

FlexIdeen QuickSheet | 26 Pages

MONAT	BRUNNEN	WERT
NOV 2020	12,1	207,95
SEP 2020	29,2	214,50
OKT 2020	24,0	373,53
TRIS 2020		

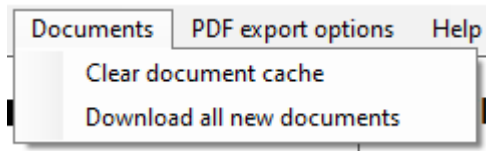
Donates QuickSheet | 9 Pages

BauMan QuickSheet | 4 Pages

Quick sheets QuickSheet | 1 Page

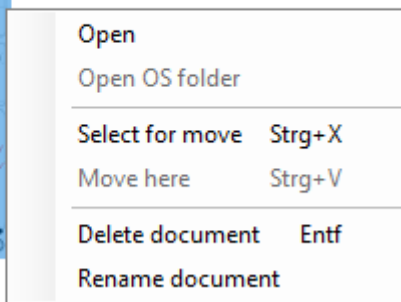
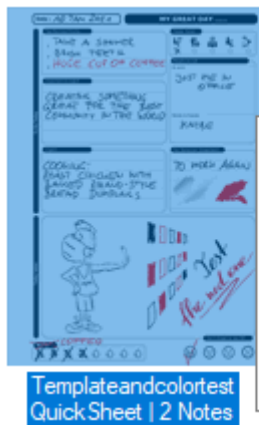
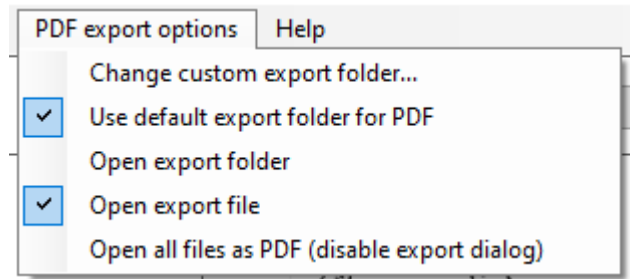
Open raw files in OS folder Sync documents and folders from the reMarkable cloud. Please be patient. [ 6 folders | 4 documents ]

## reSyncable V2 – Special functions

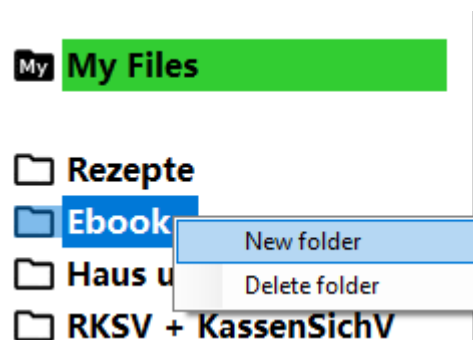


In the 'Documents' menu you can delete the local document cache (then all documents will be retrieved if necessary and all thumbnails will be recreated new). With 'Download all new documents' you can download all documents from the reMarkable Cloud. This speeds up browsing through the folders, as the files do not have to be downloaded each time.

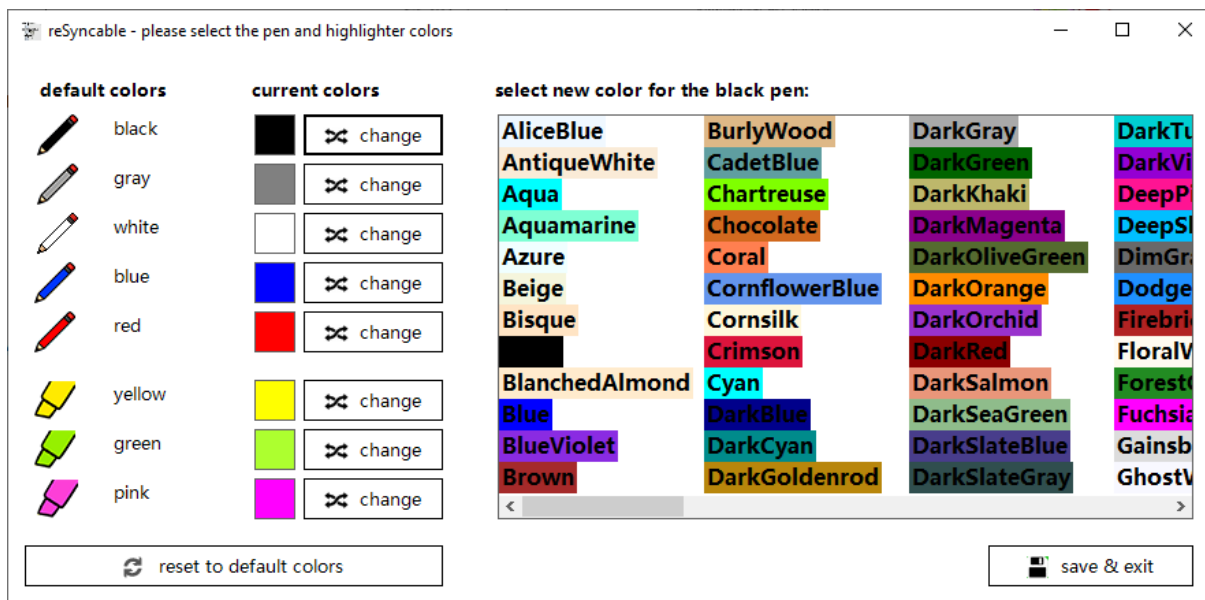
- \* Individual export folder - all displayed PDF files are automatically copied there. This could, for example, be a folder synchronized with a cloud.
- \* 'Open export folder' opens the folder where the data is saved when exporting data. 'Open export file' opens the exported file (only if it is a single one).
- \* 'Open all files as PDF' suppresses the export dialog (see below in the manual)



With the document context menu you can rename, move or delete the document. With the folder context menu you can create new folders or delete them.



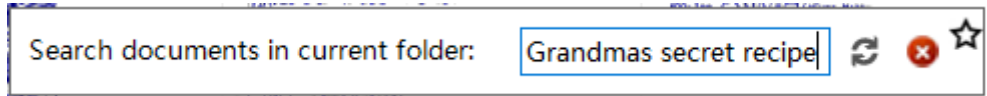
With reSyncable you can colorize the standard gray levels of the reMarkable. You can replace all reMarkable colors with your own colors. Simply click on the pens in the right upper corner and change each color individual. Have the documents redrawn with "Reload documents".



show thumbnails

If you activate the checkbox 'Show thumbnails', thumbnails will be generated for all documents in real time. This option should be deactivated for weak computers. At least a Core i3 from 4 GB Ram is recommended.

Click on the search symbol to start a search in the current folder.



To set or remove a document as a favorite, first click the document and then the star symbol.

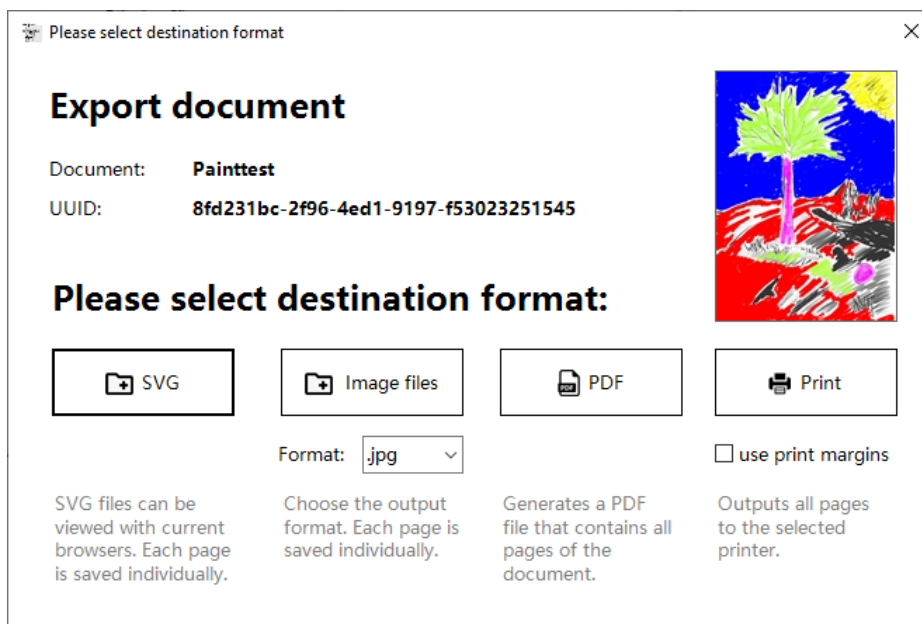


### If you double-click a document, the export menu opens:

The export menu does not appear if you have activated 'Open all files as PDF' in the menu or if it is a pure PDF document. Just try out all exports for you. You will find that SVG is very nice for fonts. But it can only be displayed in the browser and when printing you have to manually adjust the print margins and page scaling in the browser. After the output, the folder with the documents is automatically displayed if there is more than one page.

With Image files you can specify the desired file format. After the output, the folder with the documents is automatically displayed if there is more than one page.

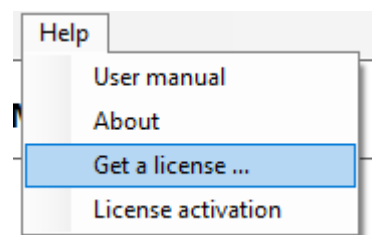
The output as a PDF file is rendered without print margins. When printing you can activate margins of 1.5cm (recommended for most printers).



### Licensing of reSyncable V2:

Please test reSyncable extensively with the free version of rM2 Template Helper before buying. The full version is identical to the demo version - except for the watermarks and pauses on the exports. Use the manual to familiarize yourself with the functions of reSyncable and rM2 Template Helper. Support via the manual and the community (facebook groups).

Buy reSyncable and benefits: <https://www.freeremarkabletools.com/shop.asp>



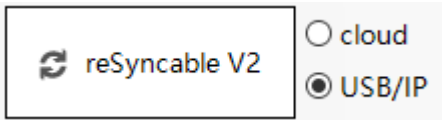
**rM2 Template Helper & Custom Screens remaining FREE forever!**

## reSyncable V2 (USB/WIFI) – an additional module



In December 2021, a new "offline mode" was installed, with which you can access the reMarkable directly instead of the cloud. Otherwise it works (almost) exactly like the cloud-based browser.

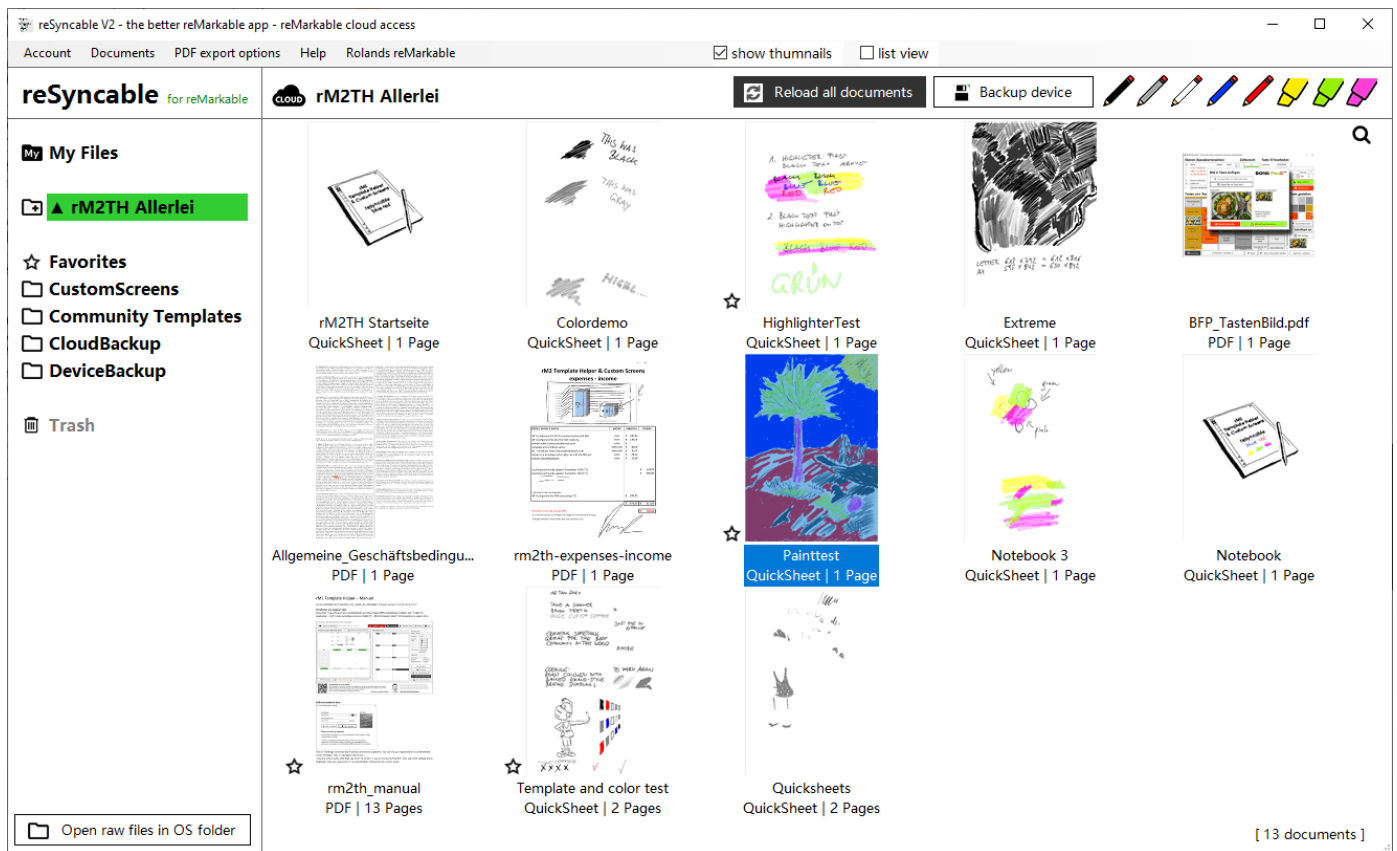
You can choose whether you want to access the reMarkable Cloud or the device BEFORE starting reSyncable:



reSyncable V2 works similarly in offline mode as it does in reMarkable cloud mode.

### Particularities:

\* You are not allowed to delete, move or rename files (do this directly on the device)



With the reMarkable firmware version 2.11, additional colors were added directly to the reMarkable. These are fully supported by reSyncable.

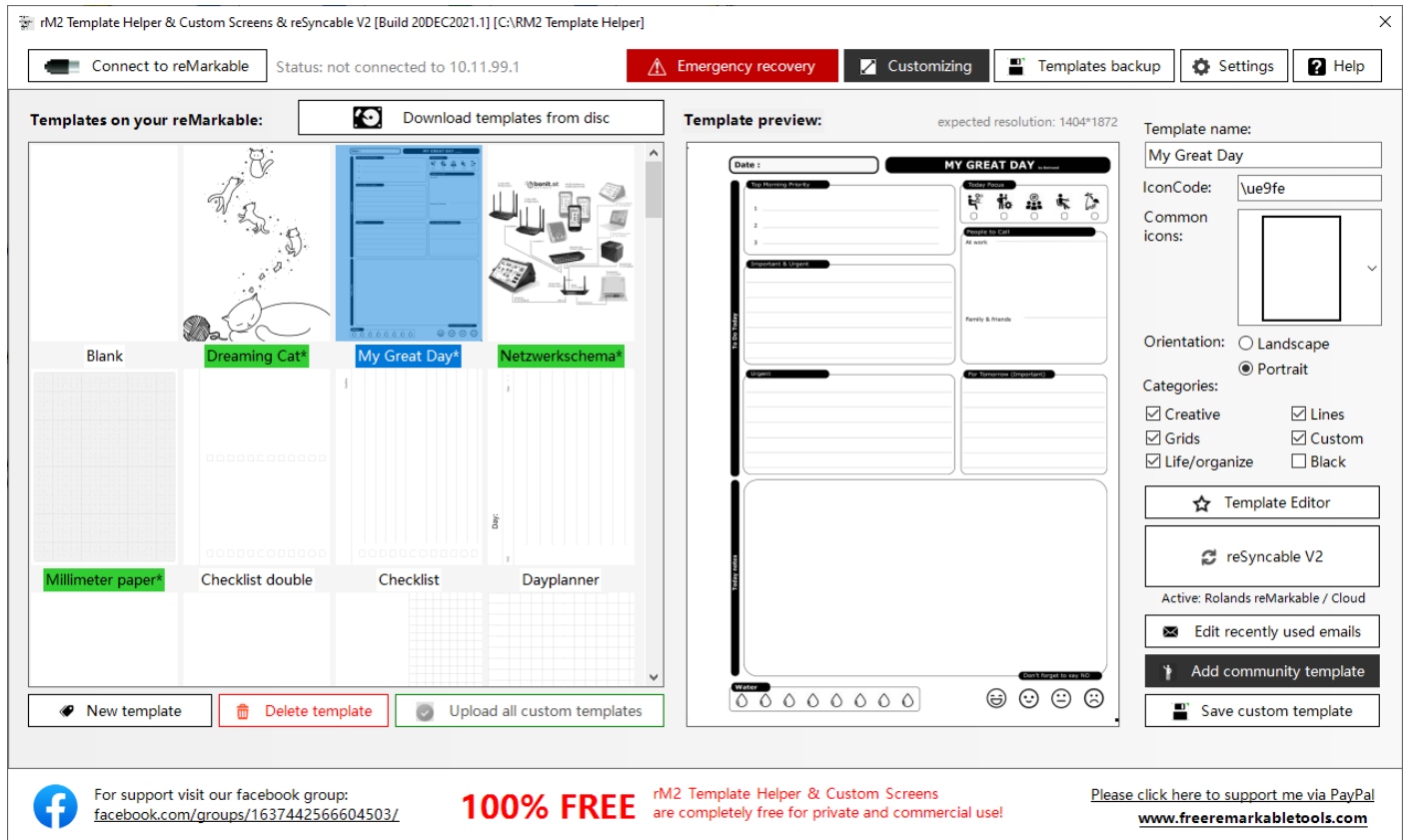
The colors of the highlighters were assigned to yellow, green and pink on the reMarkable. This innovation also means that the highlighter in older documents is now gray.

The data of the currently open folder will be re-downloaded from the reMarkable as soon as you click on the "Reload all documents" button. In the "Documents" menu you can delete the entire document cache, then all folders will be reloaded by the reMarkable when they are opened.

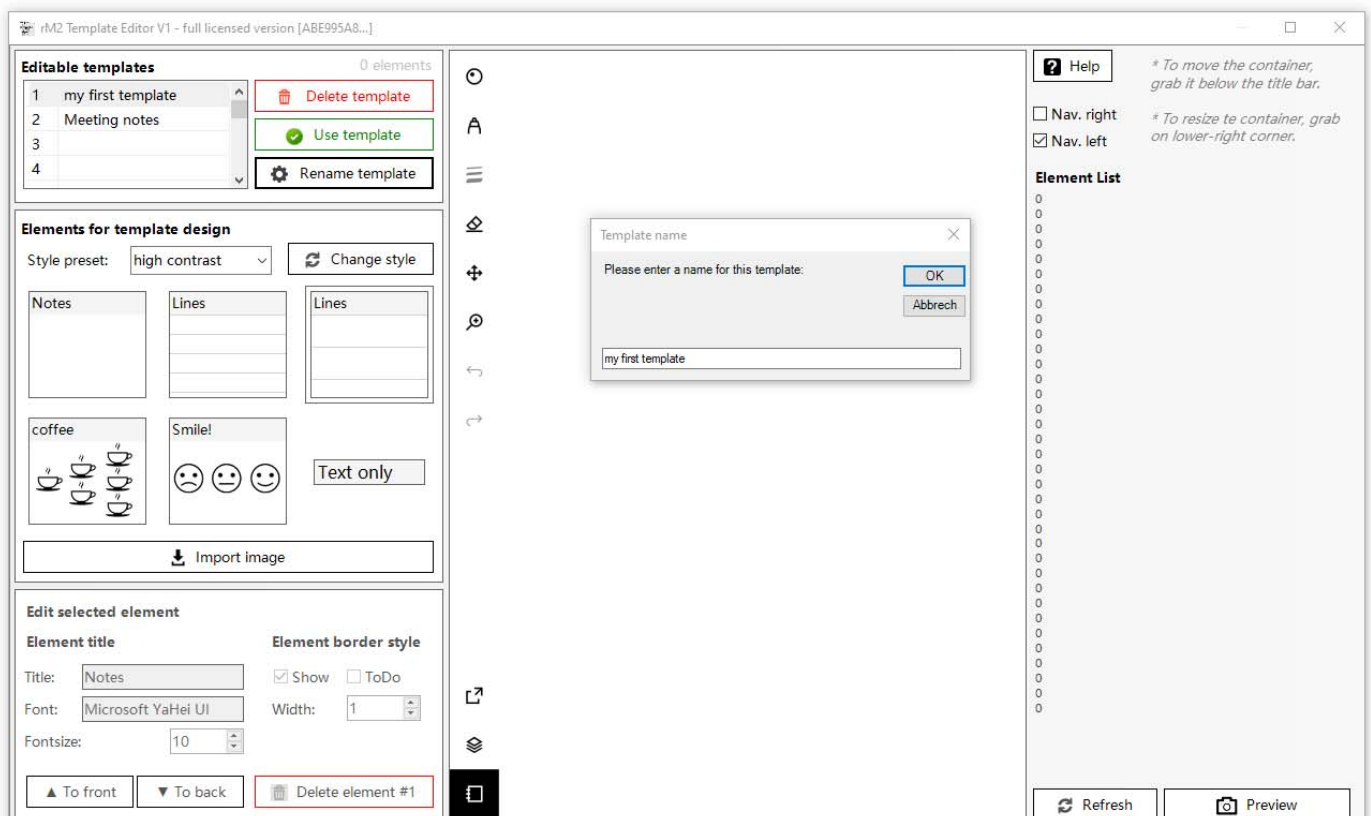
You can also select "Reload ALL documents ..." from this menu. This deletes the current documents from the computer and downloads all documents from the reMarkable (all folders). You can then browse the folder and documents without the reMarkable having to be plugged in. If you only want to reload a single document from the reMarkable, then use the document's context menu (right-click).

## rM2 Template Editor V1 – an additional module

rM2 Template Editor V1 is the ideal tool to design your own individual template in just a few steps. Start the Template Editor with the first button on the right. If you have not yet activated the license, you can do so with the gear symbols to the left of the button. You can use everything without a license, only a small watermark is attached.



Select one of the up to 20 possible templates in the upper left corner and give it a meaningful name ("Rename template" button). You can revise these templates at any time.





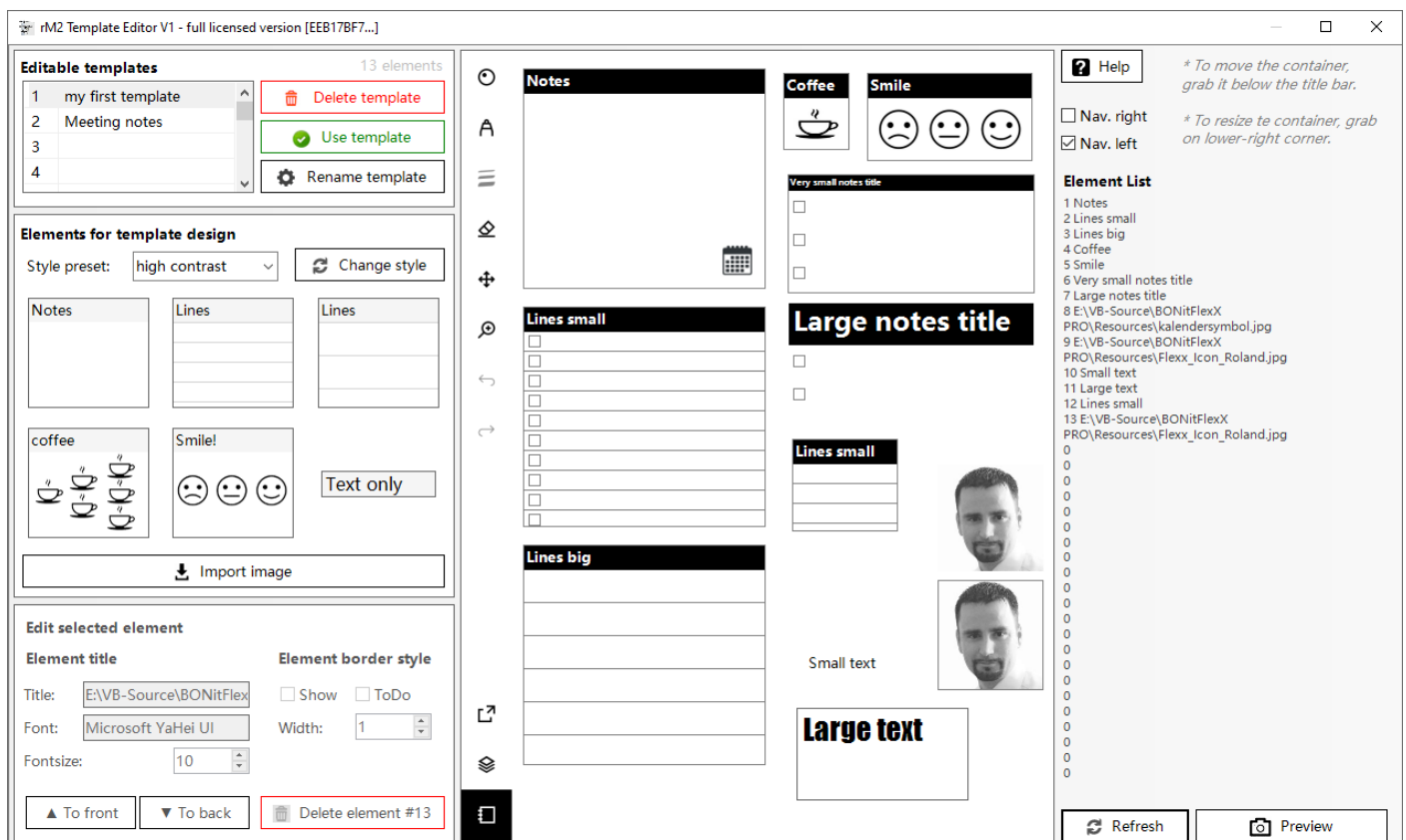
## rM2 Template Editor V1 – an additional module

With a click on one of the elements, you can add the element to the template.

Grab the element below the title bar in the container to move it. You can change the size in the lower right corner. With "Text only" elements, a frame appears when you move the mouse over them. This also allows the text element to be changed in size and position.

You can also insert several pictures of your own. Use "Import image" for this. Ideally, you copy the images beforehand into the folder "C: \ RM2 Template Helper \ TemplatesEditor" so that you have them immediately available when editing the template.

If you click on an element, you can edit it in the "Edit selected element" area. You can change the font and size, you can change the text, you can show or hide frames and for the three elements "Notes" and "Lines" you can also show "ToDo" checkboxes. You can also change the frame width. You can combine "Border" and "Todo" in any variant with the elements "Notes" and "Lines". Pictures can also be provided with frames.



In the selection field "Style preset" you can switch between 4 different styles. Simply select the style and click on "Change style". You can change the styles at any time. With "Refresh" you update the editing area. With "Preview" you can see what the template will look like after rendering. If you are satisfied with your template and would like to use it in your reMarkable templates, then click on "Use template". The template is automatically added to your templates and all you have to do is upload it to your reMarkable.

### Licensing / remove watermark:

Please test the template editor extensively with the free version of rM2 Template Helper before buying. The full version is identical to the demo version - except for the watermarks. To enter the license code, click on one of the gear icons in the main window. Then add your template to your custom templates again with "Use template" and delete the old template with the watermark.

Buy reSyncable and benefits: <https://www.freeremarkabletools.com/shop.asp>

**rM2 Template Helper & Custom Screens remaining FREE forever!**

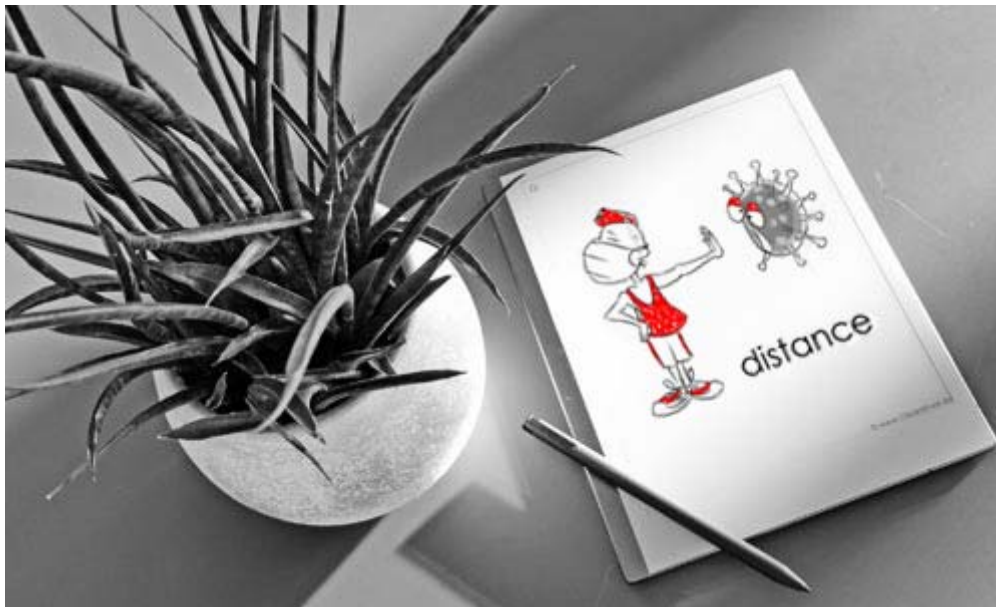
## Why is this app 100% free? Who is this guy who programmed this?



The guy is Roland. He comes from beautiful Austria. He likes to write with the reMarkable and also likes to program. Not only professionally but also privately. He just loves it.

In the second lockdown due to COVID, on the one hand he was a bit bored and on the other hand he was looking for good software to manage templates and screens for his reMarkable. Unfortunately, what he found didn't make him happy. So he decided to develop his own software. This should be user-friendly and still be able to do everything the user wants.

The "rM2 Template Helper" application was created within a few days. Since everyone has to count their money anyway due to COVID restrictions, Roland have decided to distribute the rM2 Template Helper & Custom Screens application completely free of charge in the community. If you like the application and would like to support him in further development, then he are looking forward to a small donation. But this is not a requirement.



**Disclaimer:** Use of this software is at your own risk. No liability for data loss or damage to the reMarkable. Back up your data before changing it. There is no entitlement to telephone or email support. Neither in the free version nor in the licensed version. You can get help in the relevant Facebook groups.

**rM2 Template Helper & Custom Screen are free of charge.**  
**reSyncable V2 and rM2 Template Editor are licensed products.**

Get a license: <https://www.freeremarkabletools.com/myaccountlogin.asp>

Programmed, designed and published by Roland Berghöfer

Website: [www.freeremarkabletools.com](http://www.freeremarkabletools.com)

Facebook: <https://www.facebook.com/roland.berghofer/>