

Process Chain Monitoring: RSPCM Overview and Steps to add Notification Mail



Applies to:

SAP BW 3.x & SAP BI NetWeaver 2004s. For more information, visit the [EDW homepage](#).

Summary

In an BI system there are multiple process (like data loads, ETC) carried out. Process chains help in automating and controlling the processes and thus are very critical part in the system. This document explains various ways to monitor process chain and gives overview of RSPCM transaction along with steps to setup notification mails via the transaction.

Author: Shakir Iqbal Kapdi

Company: Infosys Technologies LTD

Created on: 15th August 2010

Author Bio



Shakir Kapdi has more than 3 years of experience in SAP. He has worked on various project like implementation, Upgrade, Application support and Enhancement. He has experience in SAP BI 3.X and 7.0. He is currently working in Infosys Technologies LTD.

Table of Contents

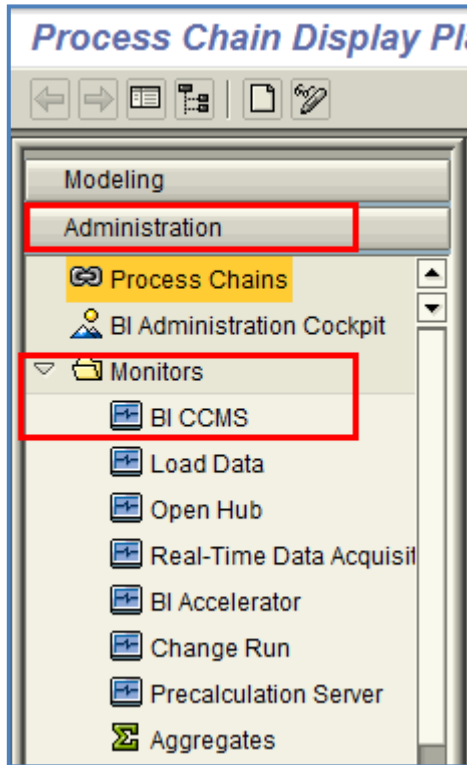
Monitoring process chain run	3
Computing Center Management System (CCMS)	3
Technical content	4
Transaction in BI system.....	4
Over view of RSPCM transaction	6
Steps to setup the notification in transaction RSPCM	7
Copyright	Error! Bookmark not defined.

Monitoring process chain run

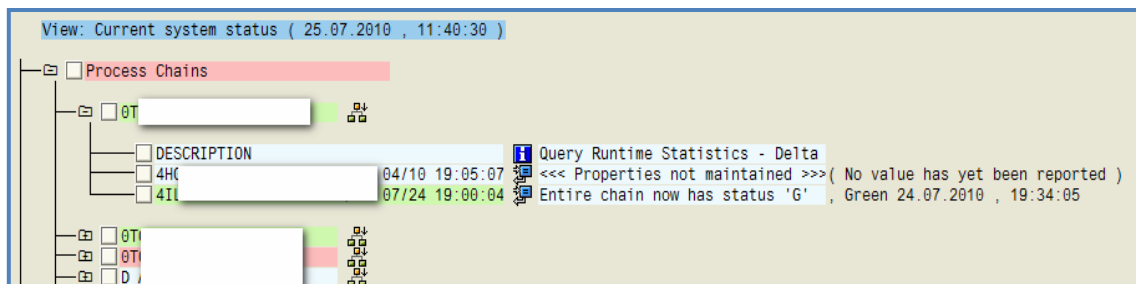
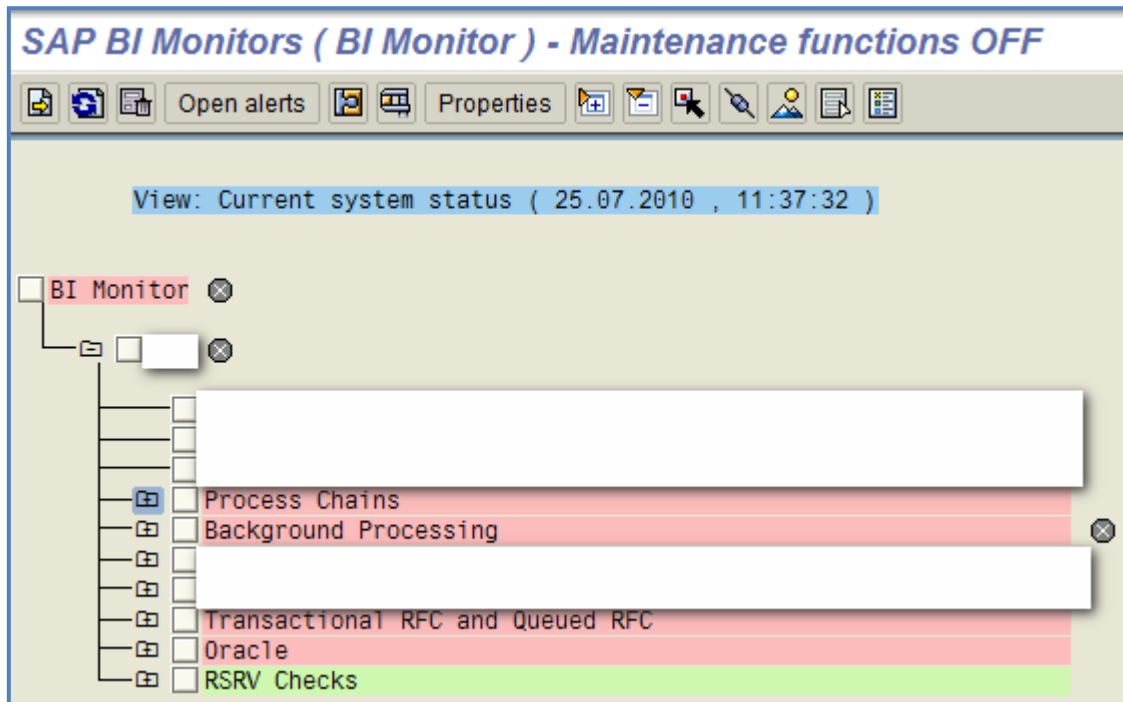
There are various ways a process chain can be monitored. Following are details for some of the environment

Computing Center Management System (CCMS)

It allows monitoring the system landscape centrally. Can be accessed via transaction BWCCMS or via administrator tab in administrative workbench.



Along with the status of process chain run for a given time CCMS tool, provide details of background job and RFC queues. Basically, it is a central tool that provides overview of various processes in the system landscape.

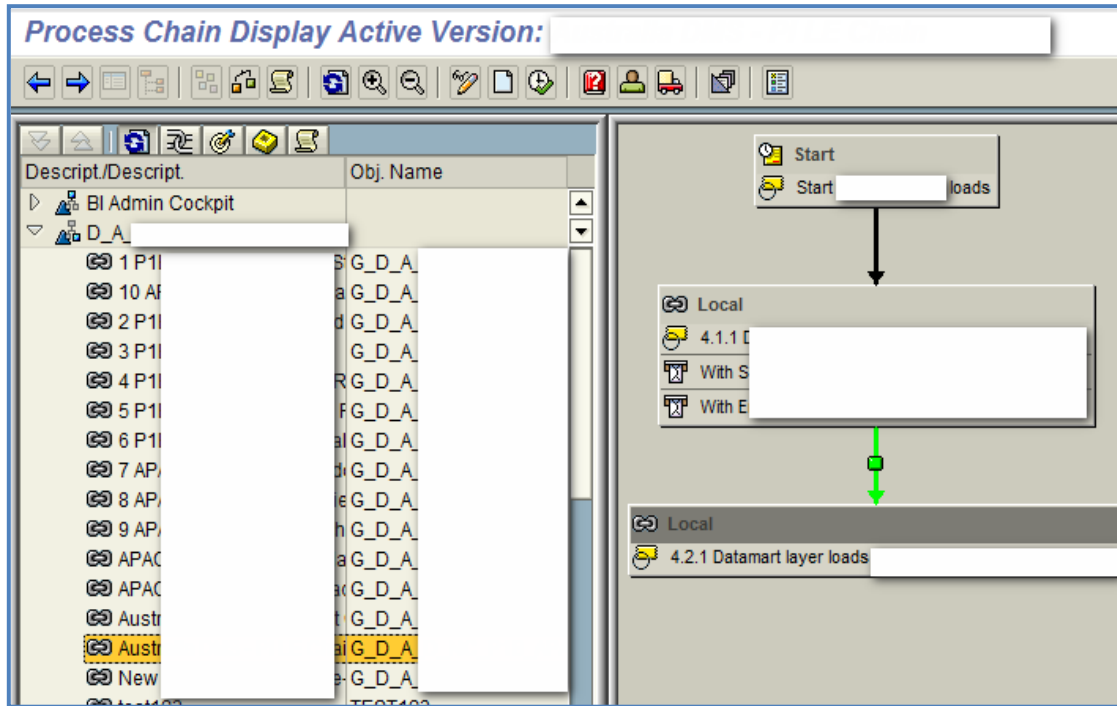


Technical content

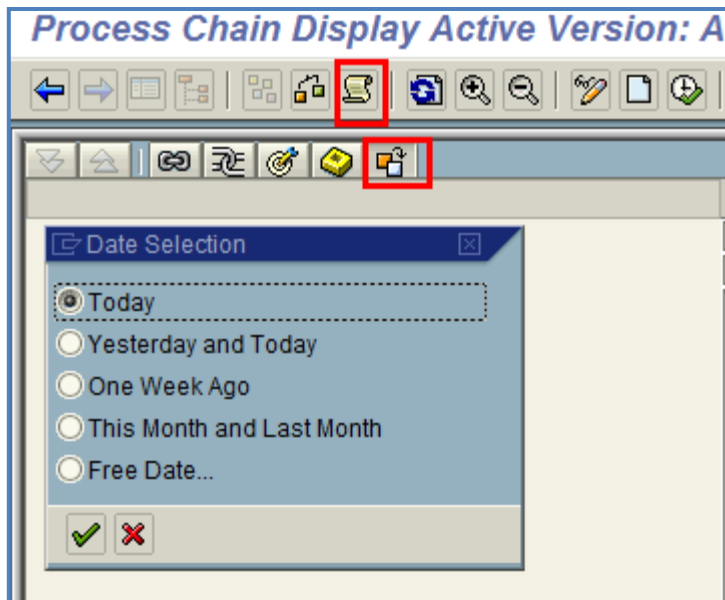
Technical content report can be used for process chain monitor. The report also helps in analysis of various runs of the process chains. A central dashboard along with process chain status and other details can be designed for monitoring of the system landscape.

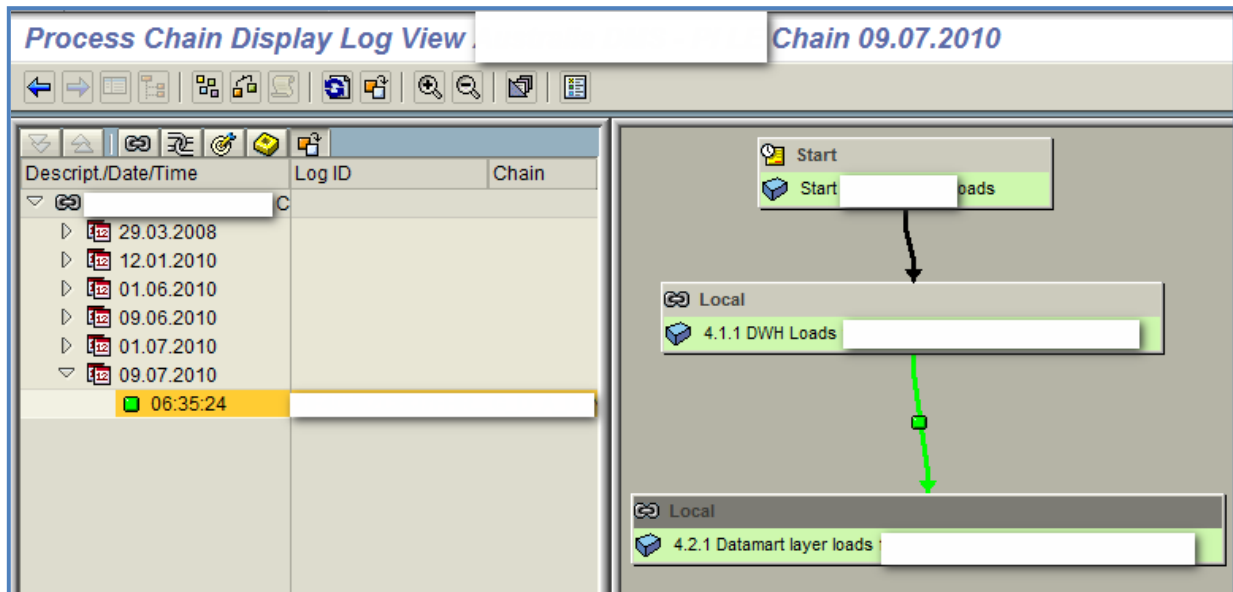
Transaction in BI system

RSPC: This transaction is used to display one or more runs of process chain in the log view. The transaction shows all the process chain available in system under different nodes assigned from which we can select the chain that is required to be monitored.



Once the chain is selected, we can then check the log as shown below to monitor the process chain. The log can be checked on different frequency like today's log will display log of the process chain run that has been executed today.



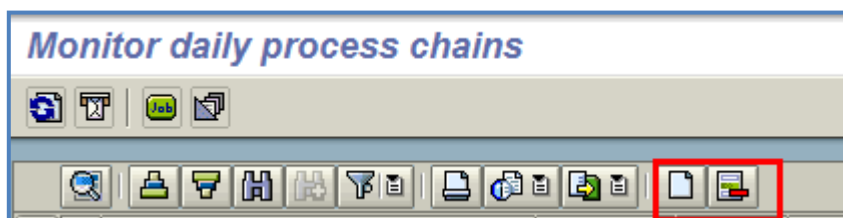


RSPC1: this transaction is used to view the log of a single chain by providing the log ID of the process chain. The interface is similar to the transaction RSPC with the difference that a specific chain can directly be opened via RSPC1.

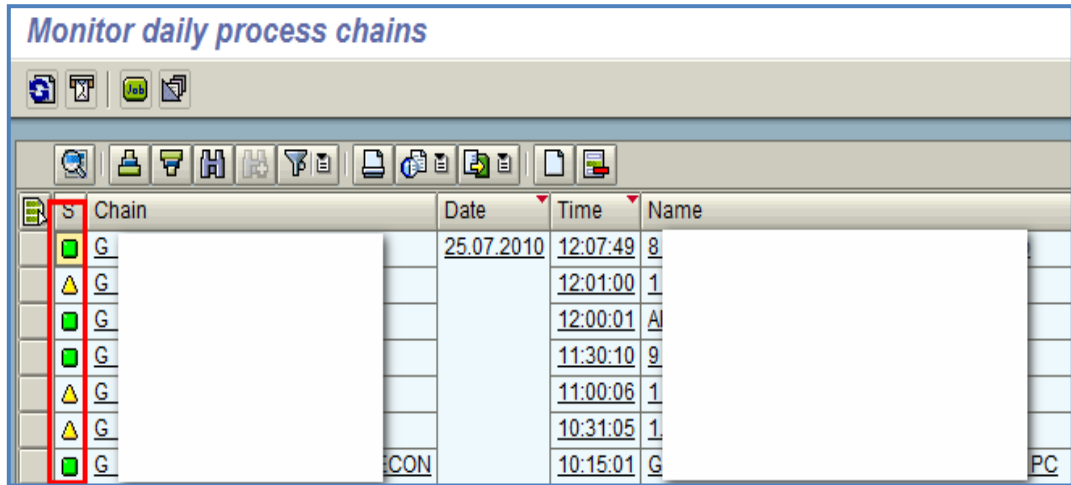
RSPCM: this transaction is used to check the status of the current run of selected process chain. We can navigate to the details log view for a process chain via this transaction.

Over view of RSPCM transaction

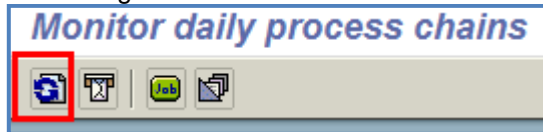
- 1) Can be accessed via transaction RSPCM, and is used to monitor the last/current run of the selected process chain.
- 2) A particular process chain can be added or removed from the list of the chains to be monitored via add and remove button.



- 3) There are two different ways of monitoring the process chain.
 - We can display the process chain runs with the status display directly in transaction RSPCM. The transaction provides details like the start date and time of the process chain and the status of the chain.



We can navigate to the details log of the process chain by clicking on the chain. The latest run of the process chain is displayed, for example if a chain is executed on monthly basis and is added in the RSPCM for monitoring the last run of the chain is displayed in the monitoring. The status can be refreshed via the refresh button.

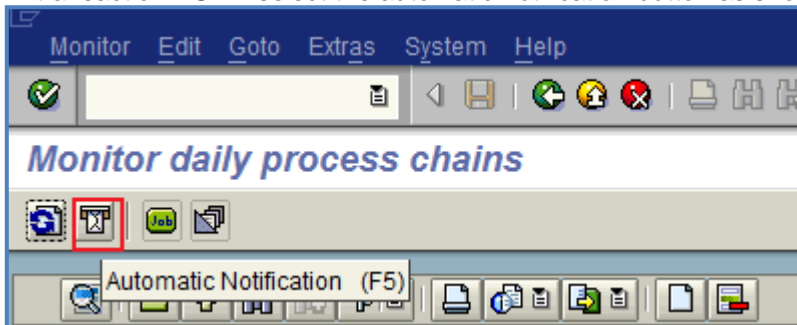


Note: Each time the transaction is opened or refreshed the status of all the process chains added in the list is checked and hence the response time of the transaction depend upon the number of chains added. It is advisable to add only the critical chain in the monitoring list.

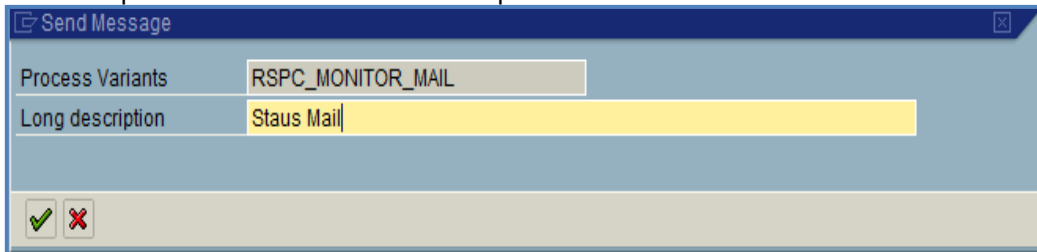
- We can automate the monitoring by scheduling the calculation of the status and sending the information about incorrect runs to a previously defined list of recipients in the background. The steps to setup the notification is explained.

Steps to setup the notification in transaction RSPCM

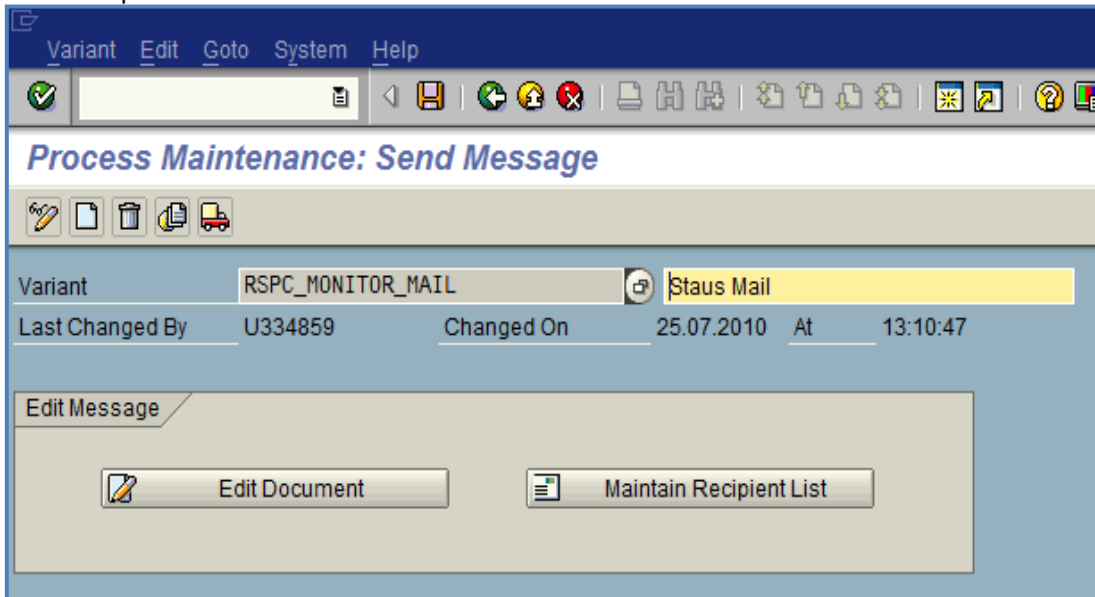
- 1) In transaction RSPM select the automatic notification button as shown below.



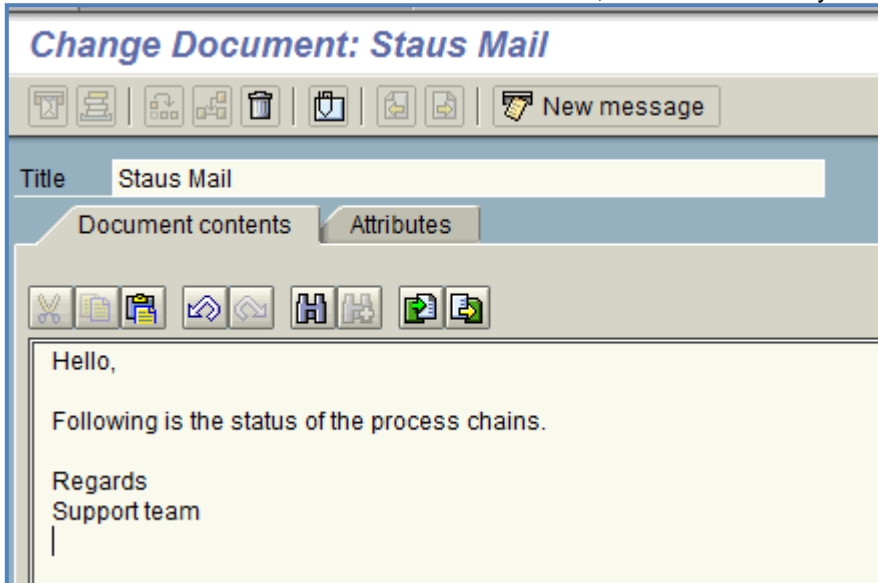
- 2) Enter the process variant and short description.



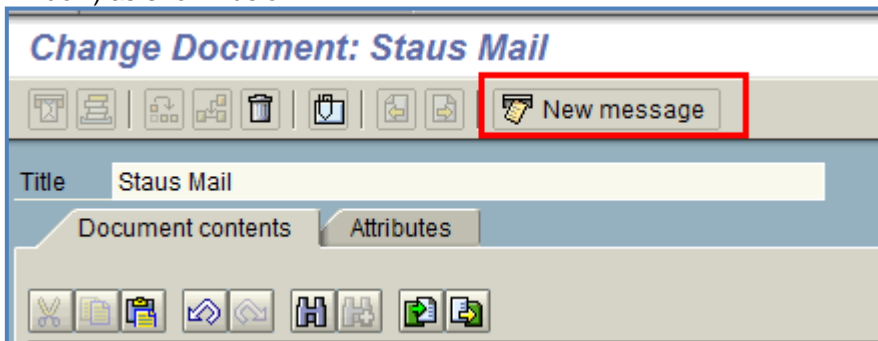
- 3) This will open the maintenance window as shown below.



- 4) Click on the Edit Document tab. In the next screen, construct the body of the message and save.



- 5) Once the details is saved click on the new message button in the same window (Edit document window) as shown below.



- 6) This will open the create document screen, give the title to the message and the recipient list to whom the status mail must be sent.

Create Document and Send

Title: Current status of the Chains

Document contents | Attributes

Hello,
Following is the status of the process chains.
Regards
Support team

Recipient | **Trans options**

Recipient	Recip. type
DL_	Shared distribution list

- 7) Once the details are filled click on the Trans option tab as shown above. The Trans options provide some additional setting as shown below.

Recipient | Trans options

General Attributes

Do not send before: 25.07.2010 No forwarding

After sending, move to outbox

Send Status

Always Confirm Send Status

Only if errors occur Also put confirmed send status in inbox

The details of the setting are as below.

Do not send before: The current date is preset in this field. If the recipient is not to receive the document until later, specify any date in the future.

No Forwarding: If you select this field, the recipient cannot forward this document to other users

After sending move to outbox: Select this function if you want to maintain an overview of the documents you have sent. You then receive additional send information about the documents in the outbox. You can see, for example, whether the recipient has already viewed the document.

Confirm Send Status: Select whether the send status of the message that was sent externally is to be confirmed. In this case, you can then monitor the send status in the recipient list of the document

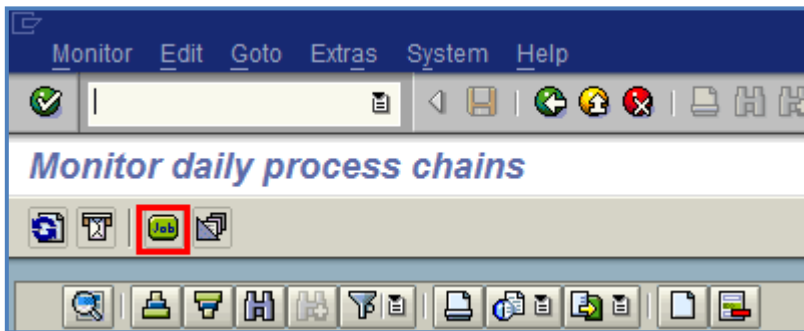
There are three options available

Always: send status always. All the process chain status is send.

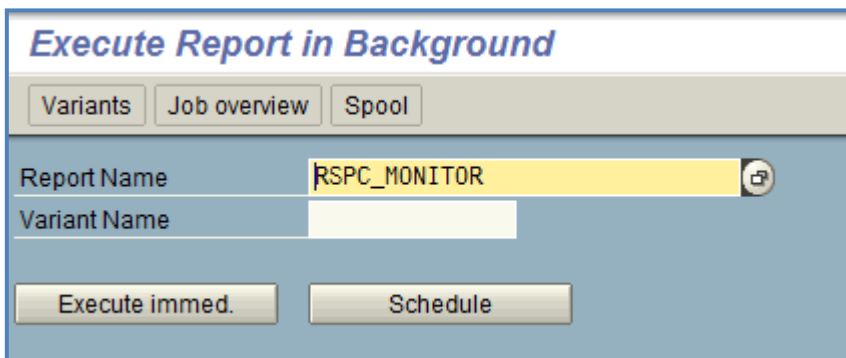
Only if error occurs: message is send with details of chain with status ended with error.

Never: no details are sent.

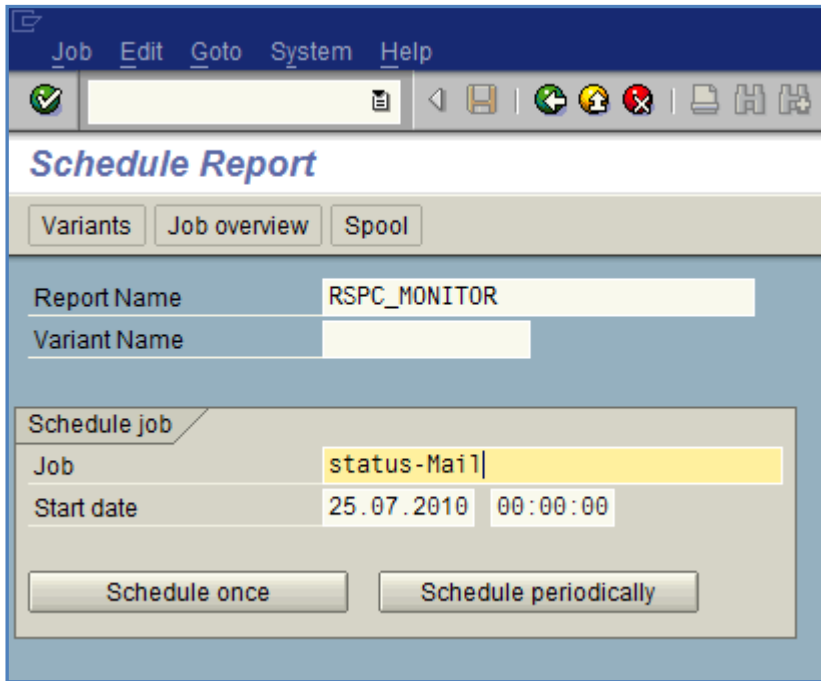
- 8) Save the changes created in the document, then save the edit document to return to the variant maintenance window. Save the variant. Thus, the details for the recipient and other options related to the status are saved.
- 9) To schedule the job so that the status message is sent to recipient and at a specified time, click on the job button as shown.



- 10) This will open the execute the report in the background option as shown below.



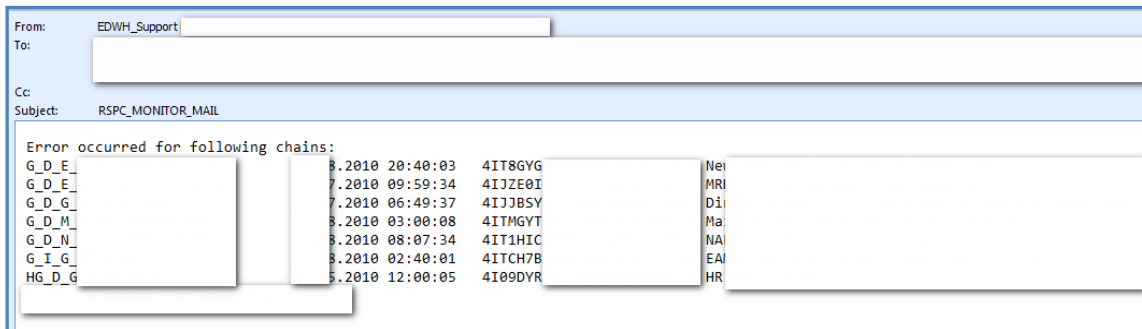
- 11) Do not change the report name, just click on the schedule option.
- 12) Provide the job name and start time of the job. Provide the periodic value at which we want to send the status under the schedule periodically option.



13) Once the Period is set, the job is scheduled.

These are the steps used to setup the notification mail via transaction RSPCM. The maintained recipient will get the mail with process chain status as per the settings at the scheduled time.

A sample mail with setting to send only if error occurs is as follows



As we can see the mail contains details like technical name of the chain, date and time the chain is executed, log ID and description of the process chains added in RSPCM with erroneous status.

Related Content

<http://www.sdn.sap.com>

For more information, visit the [EDW homepage](#).

Disclaimer and Liability Notice

This document may discuss sample coding or other information that does not include SAP official interfaces and therefore is not supported by SAP. Changes made based on this information are not supported and can be overwritten during an upgrade.

SAP will not be held liable for any damages caused by using or misusing the information, code or methods suggested in this document, and anyone using these methods does so at his/her own risk.

SAP offers no guarantees and assumes no responsibility or liability of any type with respect to the content of this technical article or code sample, including any liability resulting from incompatibility between the content within this document and the materials and services offered by SAP. You agree that you will not hold, or seek to hold, SAP responsible or liable with respect to the content of this document.