



# Precision Planter Illustrated Parts List

Starco Manufacturing, Inc.

2402 Renauna

P.O. Box 476

Casper, WY 82602

Phone 307-234-5244

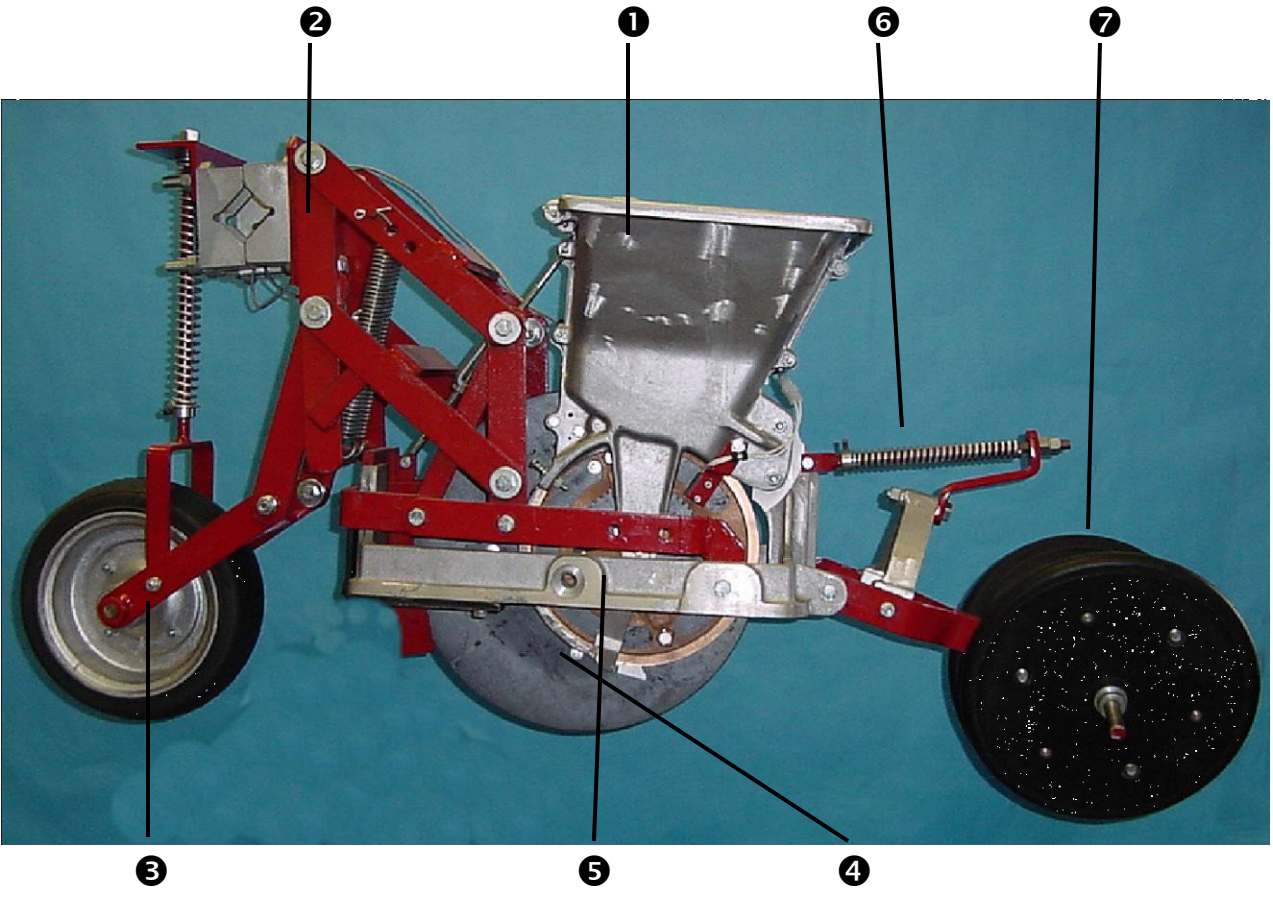
800-859-0399

Fax 307-235-7081

[www.miltonplanters.com](http://www.miltonplanters.com)

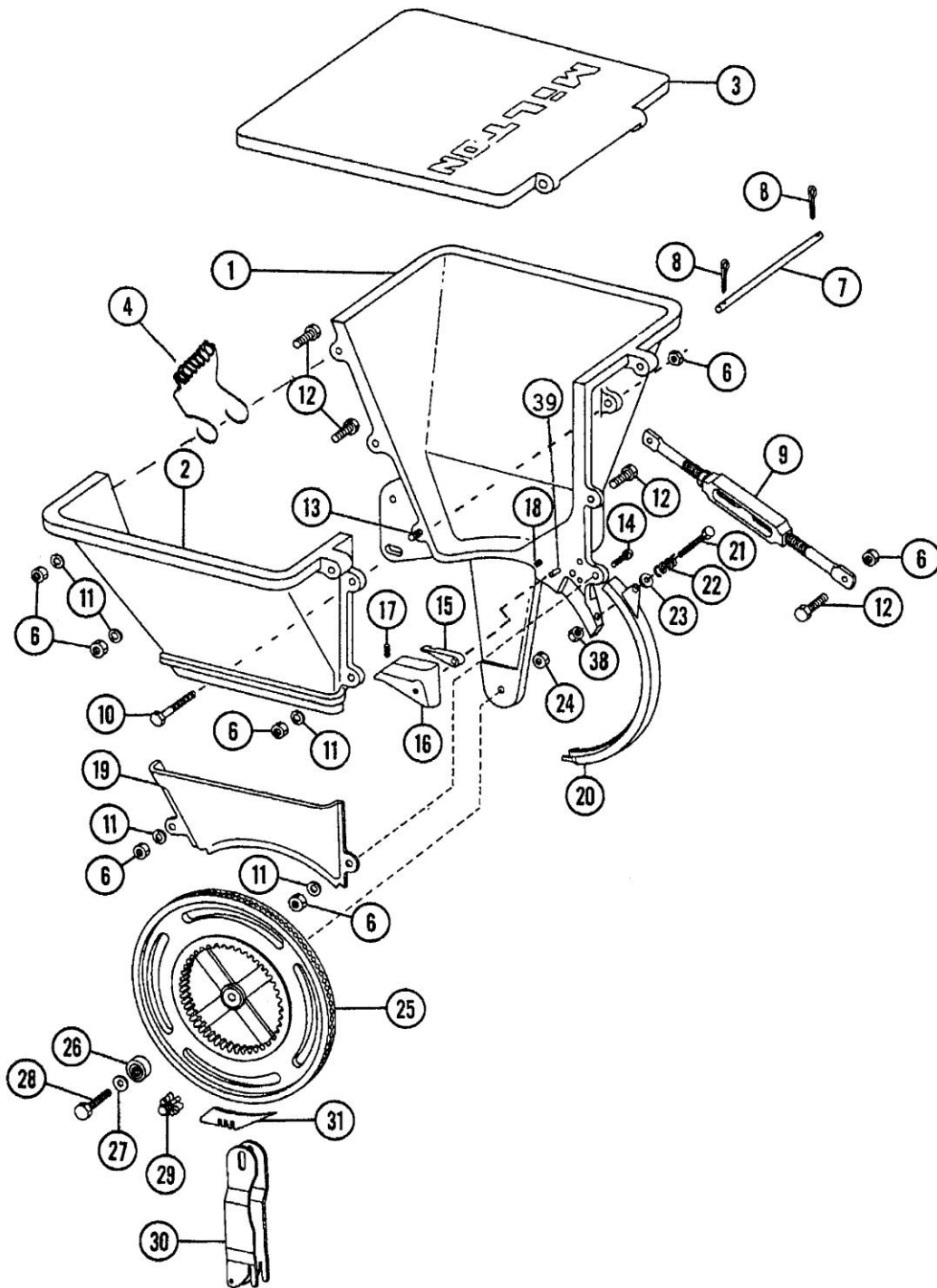
## Table of Contents

Figure 1- Milton Precision Planter .....	Page 2
Figure 2 – Hopper Assembly .....	Page 3
Figure 3 – Seed Wheel Styles .....	Page 5
Figure 4 – Highrise Drawbar Assembly .....	Page 7
Figure 5 – Depth Band Assemblies .....	Page 9
Figure 6 – Hub Assembly.....	Page 10
Figure 7 – Quick Change Hub Assembly .....	Page 11
Figure 8 – Packwheel Pressure Spring Assembly.....	Page 12
Figure 9 – Packwheel Mounting Parts for Ball Bearings.....	Page 13
Figure 10 – Packwheel Mounting Parts for Oilite Bearings .....	Page 14
Figure 11 – P-B1 2" x 13" Smooth Crown Rubber Tire Packwheel .....	Page 15
Figure 12 – P-B2 Dual 2" x 13" Smooth Corwn Rubber Tire Packwheel .....	Page 16
Figure 13 – P-B3 4" x 10: Rubber Tire Packwheel w/Ball Bearings.....	Page 17
Figure 14 – P-B4 12" x 2 3/8" Rubber V-Tire Packwheel w/Scraper.....	Page 18
Figure 15 – P-B5 4" x 10" Wire Mesh Packwheel w/Oilite Bearings.....	Page 19
Figure 16 – P-B6 4" x 12" Concave Packwheel w/Scraper .....	Page 20
Figure 17 – P-B7 Angled Packwheel with 2 – 1" x 12" Rubber Tires.....	Page 21
Figure 18 – P-B8 Angled Packwheel with 2 – 2" x 13" Rubber Tires.....	Page 22
Figure 19 – Adjustable Spring Flex Drawbar .....	Page 23
Figure 20 – Forward Presswheel Assembly .....	Page 25
Figure 21 – Cover Rake and Scraper Assemblies .....	Page 27
Figure 22 – Depth Control Frame .....	Page 29



**Figure 1 – Milton Precision Planter**

- 1 Hopper Assembly**
- 2 Highrise Draw Bar Assembly**
- 3 Forward Presswheel Assembly**
- 4 Depth Band Assembly**
- 5 Hub Assembly**
- 6 Packwheel and Pressure Wheel Spring Assembly**
- 7 Packwheel Assembly**



**Figure 2 – Hopper Assembly**

## HOPPER ASSEMBLY PARTS LIST

ITEM	PART #	DESCRIPTION	# REQUIRED
		<b>Flat Seed Cut Off Hopper Assembly (Small Seed)</b>	
1	100142	Hopper Left Hand Side	1
2	100143	Hopperside Right Hand Side	1
3	100144	Hopper Lid	1
4	100145	Lid Clip	1
6	101088	Hex Nut 1/4" - 20 UNC	11
7	100146	Lid Hinge Pin	1
8	101069	Cotter Pin 1/8" x 1"	2
9	100147	Turnbuckle	1
10	101243	Hex Head Bolt 1/4" - 20 UNC x 1 3/4"	1
11	101089	Lockwasher 1/4"	5
12	101241	Hex Head Bolt 1/4" - 20 UNC x 1"	4
13	101171	Hex Head Bolt 1/4" - 20 UNC x 1 1/2"	1
14	101091	Hex Head Bolt 1/4" - 20 UNC x 3/4"	1
15	100148	Seed Cutoff - Flat	1
16	100149	Insert	1
17	101287	Hex Socket Set Screw 3/16" x 3/8"	1
18	101301	Roll Pin 1/8" x 1 1/4"	1
19	100150	Hopper Plate	1
20	100151	Down Spout (Standard)	1
21	101243	Hex Head Bolt 1/4" - 20 UNC x 1 3/4"	1
22	100152	Spring	1
23	101109	Plain Washer 1/4" Type A	1
24	101065	Hex Nut 5/16" - 18 UNC	1
25	See Page 4	Seed Wheel	1
26	100175	Bearing	1
27	101097	5/16" x .020 Shim Washer	1
28	101282	Machine Bolt 5/16" - 18 UNC x 1 1/4"	1
29	100177	Gear (6-Tooth)	1
29	100178	Gear (7-Tooth)	1
29	100179	Gear (8-Tooth)	1
29	100180	Gear (9-Tooth)	1
29	100181	Gear (10-Tooth)	1
29	100182	Gear (11-Tooth)	1
29	100183	Gear (12-Tooth)	1
30	100184	Arm	1
31	100185	Ejector Blade	1
38	101290	1/4" - 20 UNC Nylon Locknut	1
39	100141	Taper Pin 3/16" x 1"	1

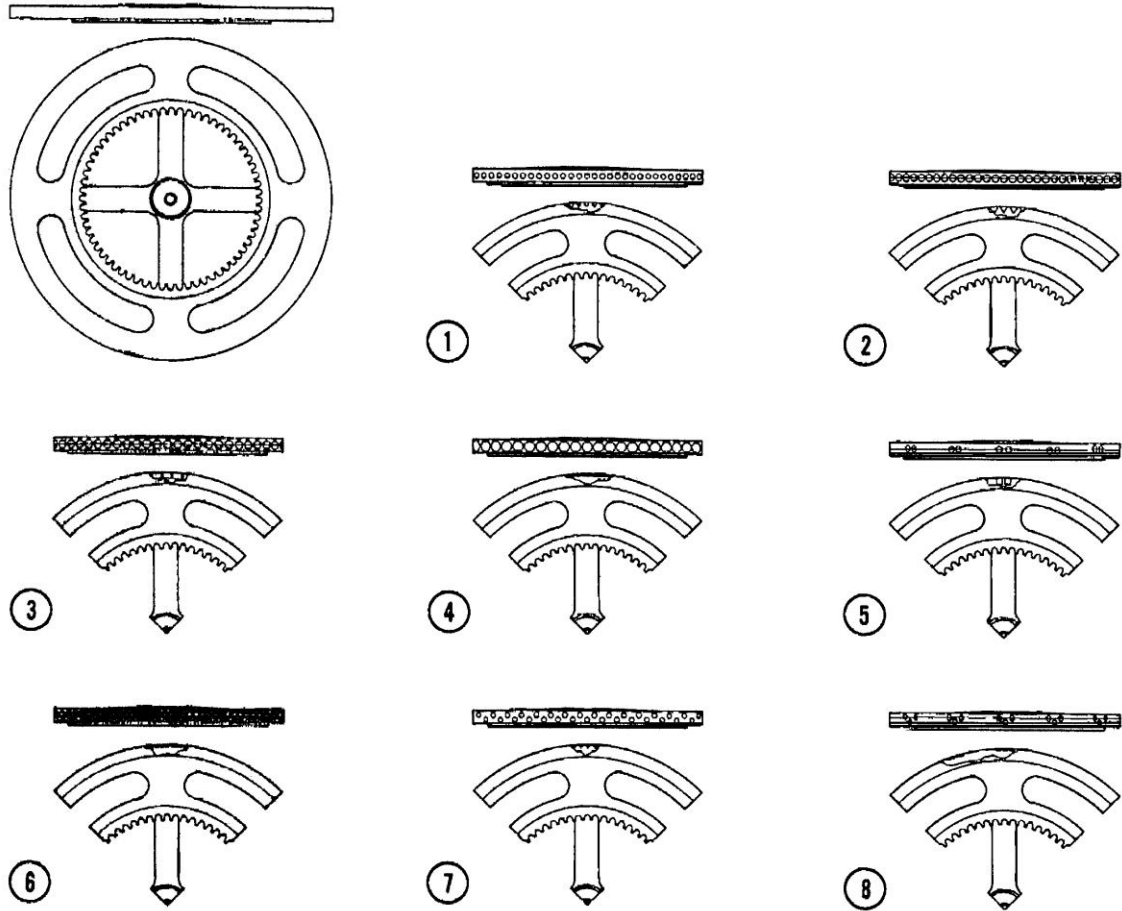


Figure 3 – Seed Wheel Styles

These seed wheel descriptions are only for general reference. The number of cells or kinds of seeds described can vary with each wheel. For best results send us a seed sample and the spacing desired. We offer a **Seed Plantability Test** at no cost to you. Just send us a sample (1 pint of seed – the unused portion will be returned) of the seed that you wish to plant along with the spacing desired. We will test your seed sample at our testing facility in the Milton or Milton N Planter for accuracy and advise you of the results and optimum planting speed.

<b>SEED WHEEL STYLES</b>			
<b>ITEM #</b>	<b>SEED WHEEL DESCRIPTION</b>	<b>PRIMARY USE</b>	<b>GENERAL RANGE OF CELLS</b>
1	Single Row	Extremely small slick seedgrasses, clovers, alfalfa, etc.	70 - 160
2	Single Row	Raw carrots - mostly used with canning variety	50 - 100
3	Single Row	Raw and coated sugar beets, tomatoes, peppers or any round seed that will work in cell sizes ranging from 4/64" to 16/64"	15 - 240
4	Single Row	Plants at intervals -Peppers, parsnips	90
5	Single Row Skip (2 Seed Drop)	Coated lettuce	10 - 60
6	Double Row	Dense planting - raw onions and carrots	240 - 400
7	Double Row	Dense planting - extremely small slick seeds - grasses, clovers, etc.	160 - 320
8	Double Row Skip (3 Seed Drop)	Plants at intervals - Cabbage, broccoli, cauliflower	10 - 80

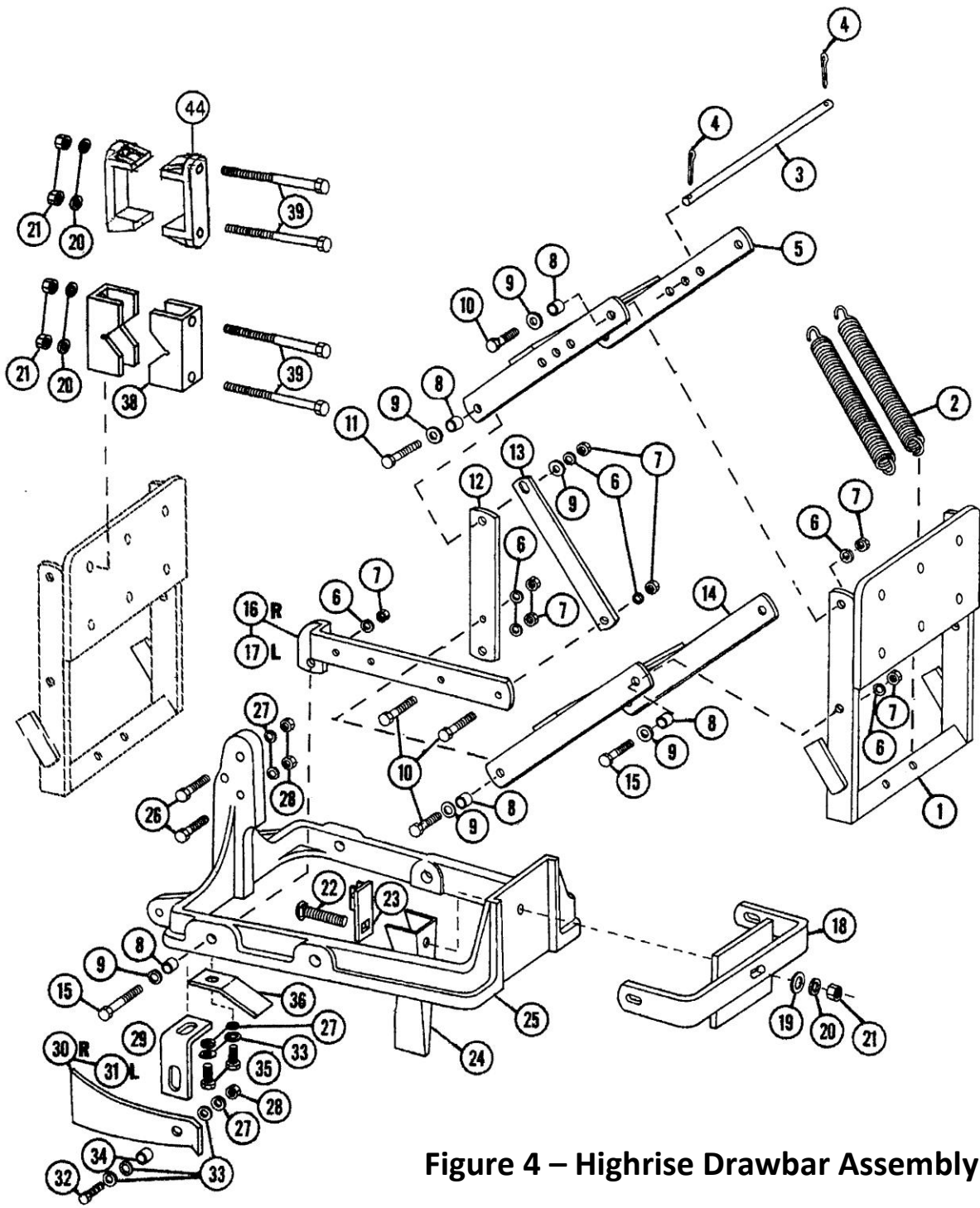
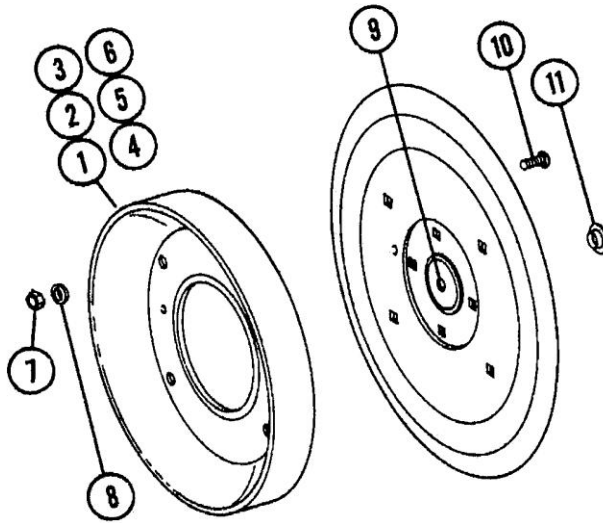


Figure 4 – Highrise Drawbar Assembly

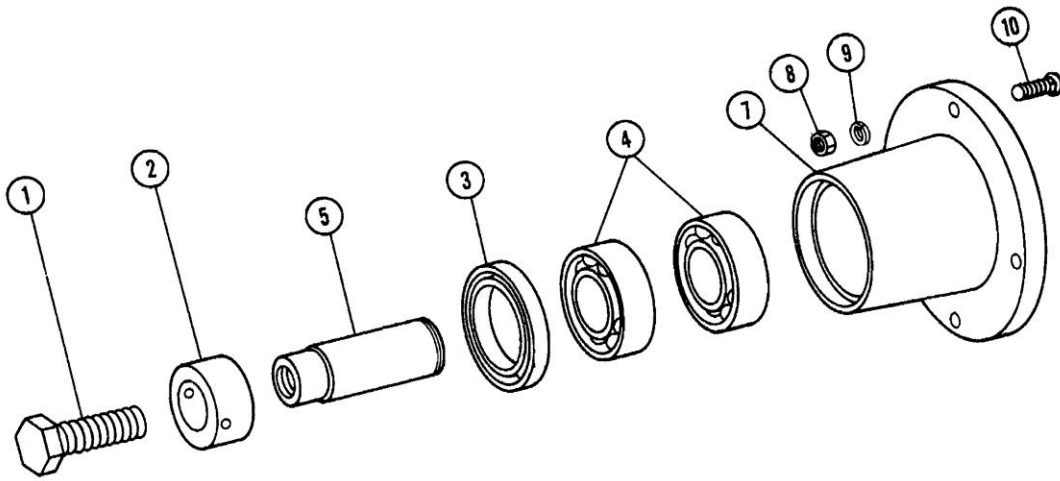


<b>Highrise Drawbar Assembly</b>			
<b>Item</b>	<b>Part #</b>	<b>Description</b>	<b># Required</b>
	<b>100163</b>	<b>Highrise Drawbar Assembly</b>	
1	100104	Drawbar Frame	1
2	100106	Drawbar Spring	2
3	100107	Spring Rod	1
4	101303	Cotter Pin 3/16" x 1"	2
5	100108	Upper Flex Bracket	1
6	101094	Lock Washer 7/16"	14
7	101093	Hex Nut 7/16" - 14 UNC	14
8	100109	Bushing 11/16" x 7/16"	8
9	101240	Plain Washer 1/16" Type A	10
10	101092	Hex Head Bolt 7/16" - 14 UNC x 1 1/2"	8
11	101245	Hex Head Bolt 7/16" - 14 UNC x 1 3/4"	2
12	100111	Strap	2
13	100110	Adjusting Strap	2
14	100105	Lower Flex Bracket	1
15	101238	Hex Head Bolt 7/16" - 14 UNC x 2"	2
16	100113	Right Arm	1
17	100112	Left Arm	1
18	100114	Drawbar Mounting Bracket	1
19	101019	Plain Washer 1/2" Type A	1
20	101062	Lock Washer 1/2"	1
21	101037	Hex Nut 1/2" - 13 UNC	1
22	101264	Carriage Bolt 1/2" - 13 UNC x 2 1/2"	1
23	100102	Turnbuckle Anchor	1
24	100101	Dirt Shield	1
25	100100	Planter Frame	1
26	101239	Hex Head Bolt 5/16" - 18 UNC x 1 1/4" (For Mounting Planter Hopper)	2
27	101066	Lock Washer 5/16"	8
28	101065	Hex Nut 5/16" - 18 UNC	4
29	100120	Angle Bracket	2
<b>27-30, 32-35</b>	<b>100116</b>	<b>Cover Spoon Assembly - Right</b>	<b>1</b>
<b>27-29, 31-35</b>	<b>100117</b>	<b>Cover Spoon Assembly - Left</b>	<b>1</b>
30	100227	Right Spoon	1
31	100228	Left Spoon	1
32	101293	Hex Head Bolt 5/16" - 18 UNC x 1 1/4"	2
33	101095	Plain Washer 5/16" Type A	6
34	101200	Bushing 5/16" x 5/16"	2
35	101147	Hex Head Bolt 5/16" - 18 UNC x 1"	4
36	100115	Depth Band Scraper For Depth Band 1/2" Thru 1"	1
<b>20, 21, 38, 39</b>	<b>100164</b>	<b>Diamond Clamp Assembly</b>	<b>2</b>
38	101156	Diamond Clamp	4
39	101061	Hex Head Bolt 1/2: - 13 UNC x 6"	4
40	100300	Depth Band Scraper for Depth Band 1 1/4" Thru 2"	1
<b>20, 21, 44, 39</b>	<b>100166</b>	<b>4" Flat Clamp Assembly</b>	<b>2</b>
44	100167	4" Flat Clamp Half	1



**Figure 5 – Depth Band Assembly**

<b>DEPTH BAND ASSEMBLIES</b>			
<b>ITEM</b>	<b>PART #</b>	<b>DESCRIPTION</b>	<b># REQUIRED</b>
1	100131	Depth Band 1/2" (13 1/2" Dia.)	Sold by the Pair
2	100132	Depth Band 3/4" (13" Dia.)	Sold by the Pair
3	100133	Depth Band 1" (12 5/8" Dia.)	Sold by the Pair
4	100134	Depth Band 1 1/4" (12 1/8" Dia.)	Sold by the Pair
5	100135	Depth Band 1 1/2" (11 5/8" Dia.)	Sold by the Pair
6	100136	Depth Band 2" ( 10 5/8" Dia.)	Sold by the Pair
7	101088	Hex Nut 1/4" - 20 UNC	4
8	101089	Lockwasher 1/4"	4
9	100137	Disc Opener - Steel	1
10	101292	Special Pan Bolt 1/4" - 20 x 3/4"	4
11	100139	Plug	1



**Figure 6 – Hub Assembly**

<b>HUB ASSEMBLY</b>			
<b>ITEM</b>	<b>PART #</b>	<b>DESCRIPTION</b>	<b># REQUIRED</b>
<b>1 - 10</b>	<b>100122</b>	<b>Hub Assembly</b>	<b>1 or 2</b>
1	100123	Hex Head Bolt 5/8" - 11 UNC x 2" Gr.5	1
2	101339	Shaft Collar 7/8"	1
3	100125	Seal	1
4	100126	Bearing	2
5	100127	Axle	1
7	100129	Hub	1
8	101088	Hex Nut 1/4" - 20 UNC	4
9	101089	Lock Washer 1/4"	4
10	101293	Special Pan Bolt 1/4" - 20 UNC x 1"	4

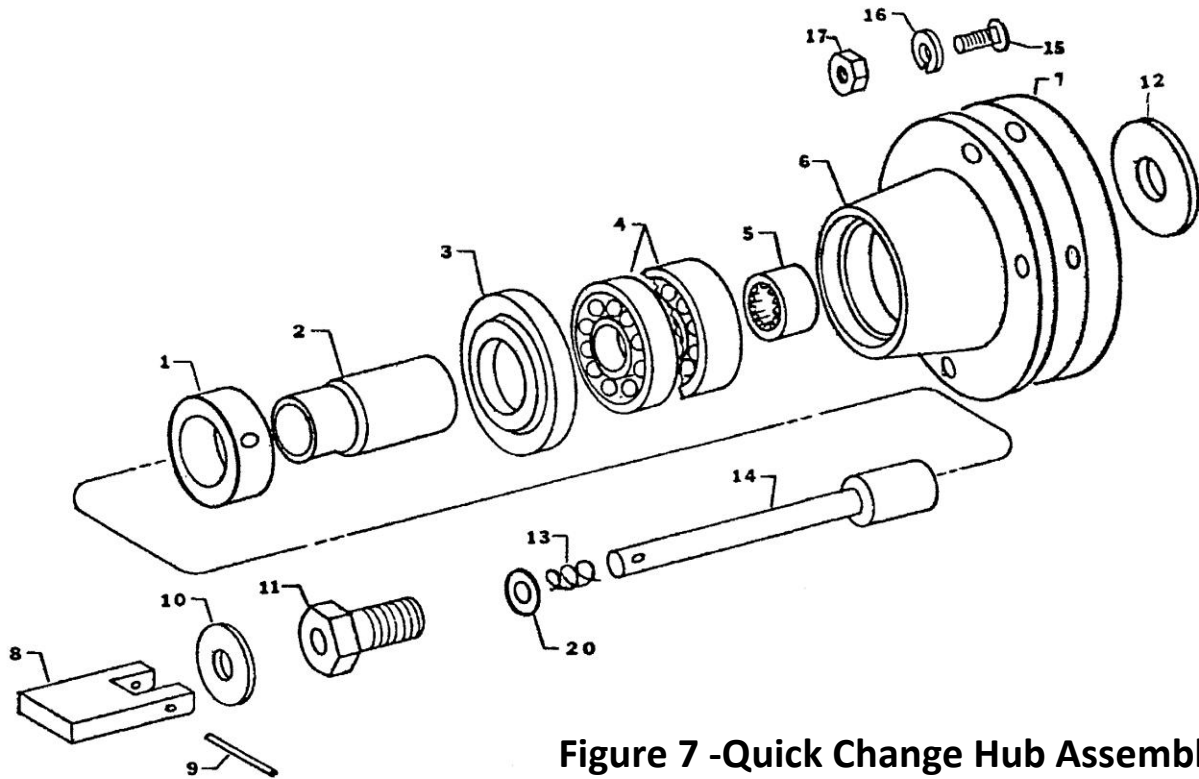
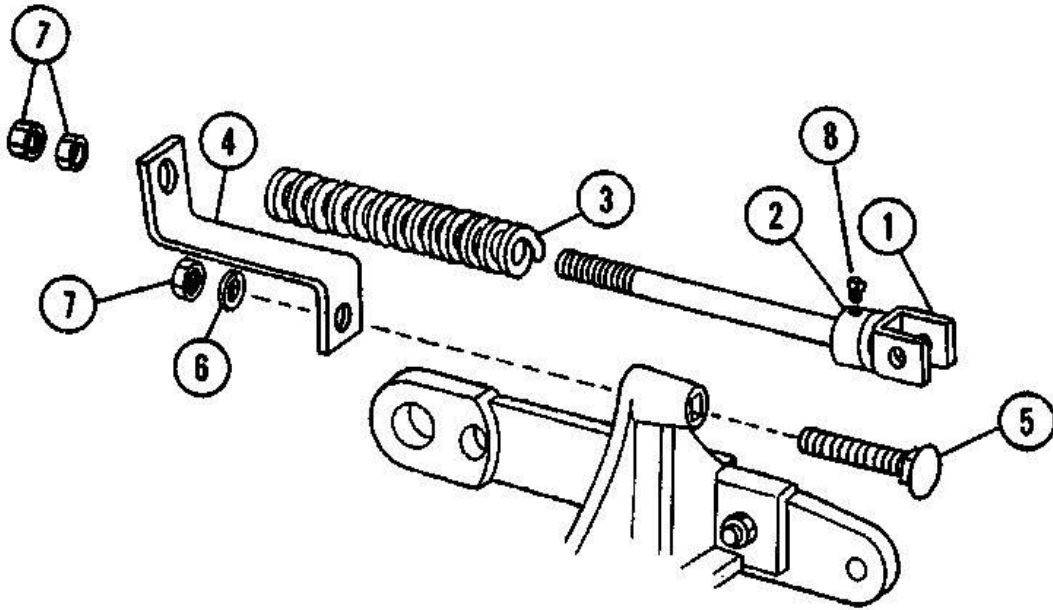


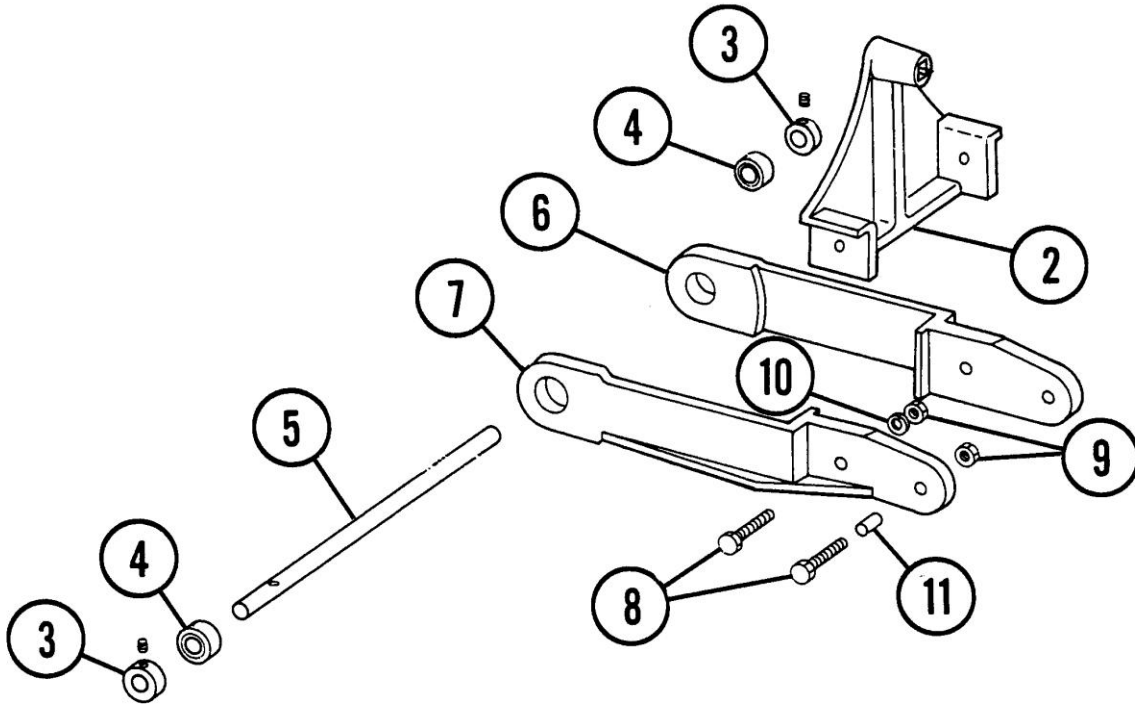
Figure 7 -Quick Change Hub Assembly

Quick Change Hub Assembly			
Item	Part #	Description	# Required
	101348	Complete Hub Assembly	
	101349	Lever Shaft Assembly	
1	101339	Shaft Collar	1
2	101350	Axle	1
3	100125	Seal	1
4	100126	Hub Bearings	2
5	101352	Spacer Disc Clutch Bearing	1
6	101353	Hub (Short)	1
7	101354	Spacer Disc	1
8	101355	Lever Shaft Assembly	1
9	101356	Roll Pin 1/8" x 3/4"	1
10	101357	Teflon Washer 5/16" x 1/6"	1
11	101358	Hex Head Bolt 5/8" - 11 x 1 1/2" Drilled	1
12	101393	Spacer Disc Seal	1
13	101360	Spring	1
14	101361	Shaft	1
15	101362	Special Pan Head 1/4" - 20 UNC x 1 1/2" Long	4
16	101089	Lock Washer 1/4"	4
17	101088	Hex Nut 1/4"	1
20	101366	Machine Washer 5/16" x .020	1



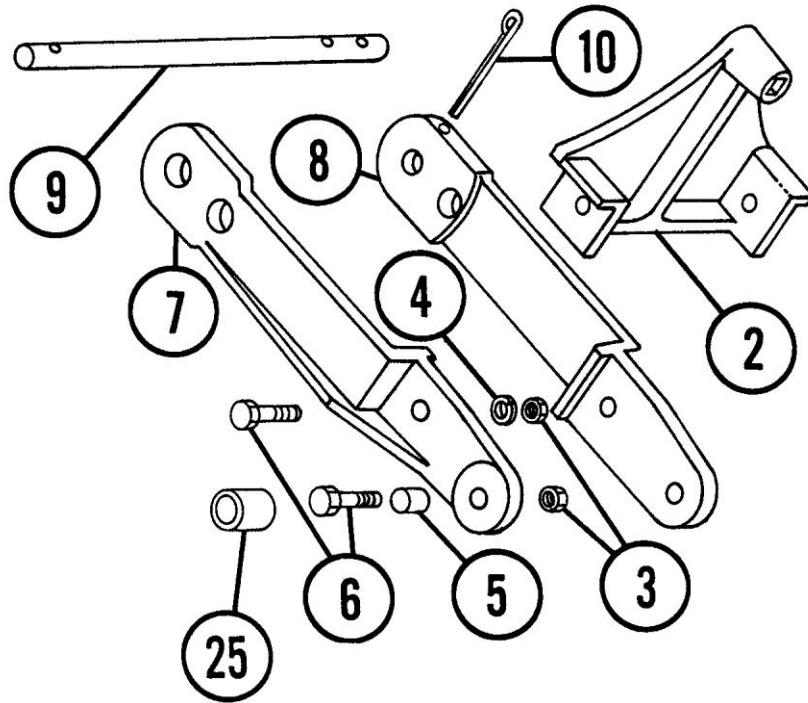
**Figure 8 – Packwheel Pressure Spring Assembly**

<b>PACKWHEEL PRESSURE SPRING ASSEMBLY</b>			
<b>ITEM</b>	<b>PART #</b>	<b>DESCRIPTION</b>	<b># REQUIRED</b>
<b>1 - 8</b>	<b>100191</b>	<b>Packwheel Pressure Spring Assembly</b>	<b>1</b>
1	100187	Clevis Bolt	1
2	100190	Set Collar 1/2"	1
3	100188	Packwheel Spring	1
4	100189	Bracket	1
5	101264	Hex Head Bolt 1/2" - 13 UNC x 2 1/2"	1
6	101062	Lock Washer 1/2"	1
7	101037	Hex Nut 1/2" - 13 UNC	3
8	101286	1/4" - 20 UNC x 1/2" Square Head	1



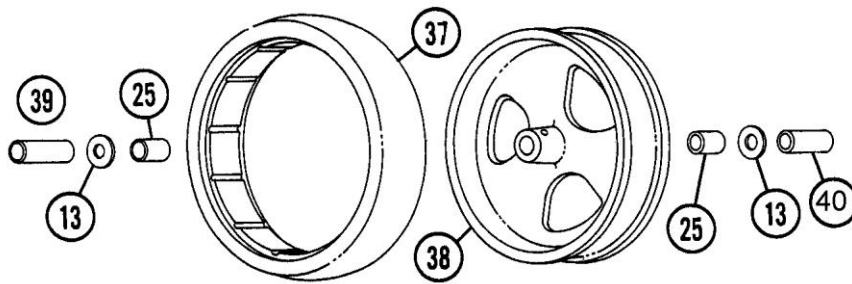
**Figure 9 – Packwheel Mounting Parts for Ball Bearings**

<b>PACKWHEEL MOUNTING PARTS FOR BALL BEARINGS</b>			
<b>ITEM</b>	<b>PART #</b>	<b>DESCRIPTION</b>	<b># REQUIRED</b>
	<b>100195</b>	<b>Packwheel Mounting Parts For Ball Bearings</b>	<b>1</b>
2	100196	A-Bracket	1
3	100124	Set Collar 5/8"	2
4	100198	Bearing	2
5	100199	Axle	1
6	100200	Left Packwheel Arm for Ball Bearings	1
7	100201	Right Packwheel Arm for Ball Bearings	1
8	101282	Hex Head Bolt 5/16" - 18 UNC x 1 1/4"	4
9	101065	Hex Nut 5/16: - 18 UNC	4
10	101066	Lock Washer 5/16"	2
11	100202	Bushing 5/16" x 9/16"	2



**Figure 10 – Packwheel Mounting Parts for Oilite Bearings**

<b>PACKWHEELS WITH OILITE BEARINGS</b>			
<b>ITEM</b>	<b>PART #</b>	<b>DESCRIPTION</b>	<b># REQUIRED</b>
	<b>100194</b>	<b>Packwheel Mounting Parts for Oilite Bearings</b>	
2	100196	A-Bracket	1
3	101065	Hex Nut 5/16" - 18 UNC	4
4	101066	Lock Washer 5/16"	2
5	100202	Bushing 5/16" x 9/16"	2
6	101239	Hex Head Bolt 5/16" - 18 UNC x 1 1/4"	4
7	100306	Right Packwheel Arm	1
8	100307	Left Packwheel Arm	1
9	100308	Axle	1
10	101306	Cotter Pin 3/16" x 3"	1

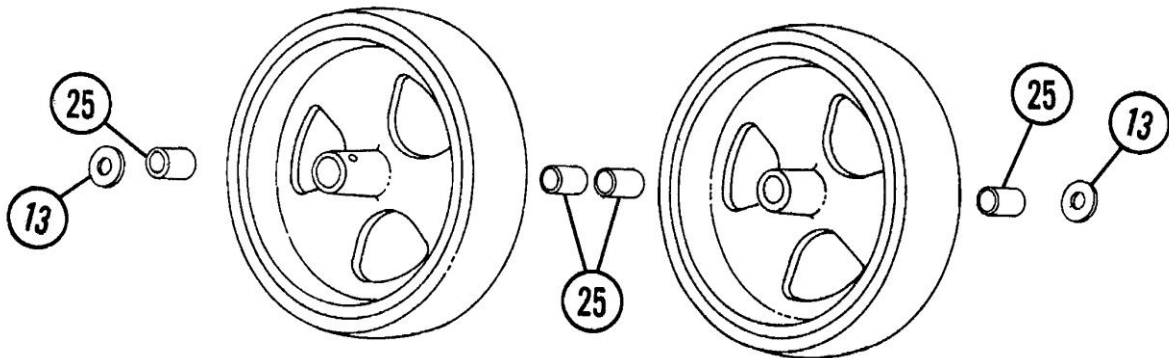


**Figure 11 – P-B1 2" x 13" Smooth Crown Rubber Tire Packwheel**

All Packwheel Assemblies include A-Bracket, Arms, Pressure Spring Assembly and all Fasteners to Assemble and Attach Assembly to the Planter

<b>P-B1 - 2" x 13" Smooth Crown Rubber Tire Packwheel</b>			
<b>ITEM</b>	<b>PART #</b>	<b>DESCRIPTION</b>	<b># REQUIRED</b>
	100310	2" x 13" Packwheel with Oilite Bearings	
13	101129	Plain Washer 5/8" S.A.E.	2
25	100303	Oilite Bearing	2
37	100275	2" x 13" Tire	1
38	100311	2" x 13" Rim with Oilite Bearing	1
39	100158	Spacer 5/8" x 1 1/4"	1
40	100159	Spacer 5/8" x 1 3/4"	1

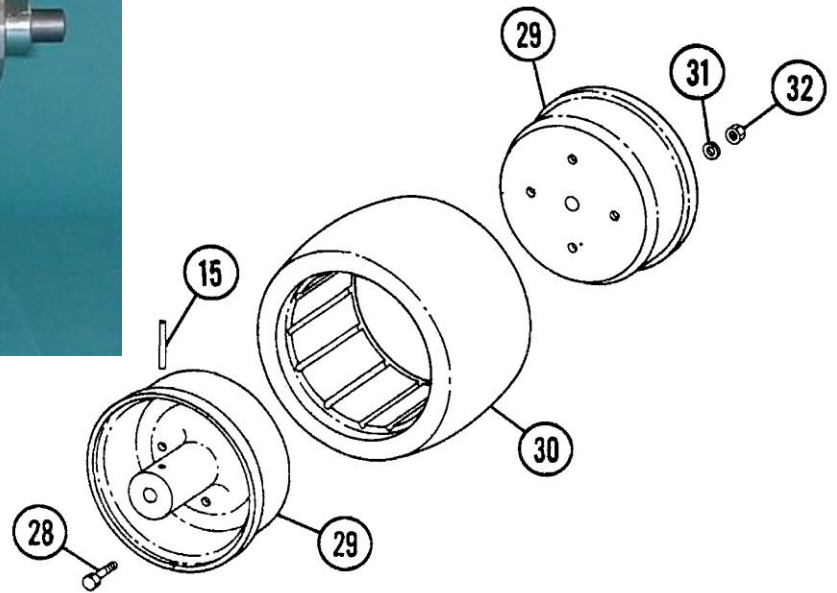




**Figure 12 – P-B2 Dual 2" x 13" Smooth Crown Rubber Tire Packwheel**

All Packwheel Assemblies include A-Bracket, Arms, Pressure Spring Assembly and all Fasteners to Assemble and Attach Assembly to the Planter

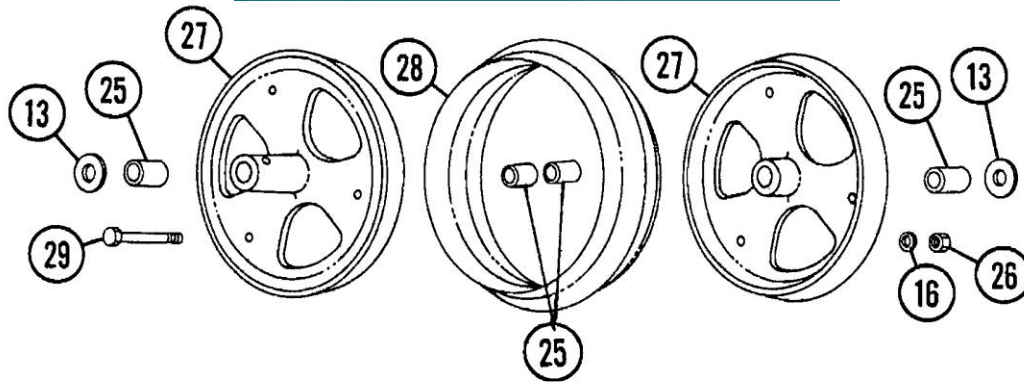
<b>P-B2 - Dual 2" x 13" Smooth Crown Rubber Tire Packwheel</b>			
<b>ITEM</b>	<b>PART #</b>	<b>DESCRIPTION</b>	<b># REQUIRED</b>
	100312	Dual 2" x 13" Packwheel with Oilite Bearings	
13	101129	Plain Washer 5/8" S.A.E.	2
25	100303	Oilite Bearing	4
37	100275	2" x 13" Tire	2
38	100311	2" x 13" Rim for Oilite Bearing	2



**Figure 13 – P-B3 4" x 10" Rubber Tire Packwheel with Ball Bearings in the Arm**

All Packwheel Assemblies include A-Bracket, Arms, Pressure Spring Assembly and all Fasteners to Assemble and Attach Assembly to the Planter

<b>P-B3 - 4" x 10" Rubber Tire Packwheel with Ball Bearings in the Arm</b>			
<b>ITEM</b>	<b>PART #</b>	<b>DESCRIPTION</b>	<b># REQUIRED</b>
	100283	4" x 10" Pack Wheel	1
15	101305	Roll Pin 3/16" x 2"	1
28	101241	Hex Head Bolt 1/4" - 20 UNC x 1"	4
29	100284	4" x 10" Rim	2
30	100285	4" x 10" Tire	1
31	101098	Lock Washer 1/4"	4
32	101088	Hex Nut 1/4" - 20 UNC	4



**Figure 14 – P-B4 12" x 2 3/8" Rubber V-Tire Packwheel with Scraper**

All Packwheel Assemblies include A-Bracket, Arms, Pressure Spring Assembly and all Fasteners to Assemble and Attach Assembly to the Planter

<b>P-B4 - 12" x 2 3/8" Rubber V-Tire Packwheel with Scraper</b>			
<b>ITEM</b>	<b>PART #</b>	<b>DESCRIPTION</b>	<b># REQUIRED</b>
	100186	V-Tire Packwheel with Oilite Bearings (Wheel Only)	
	100160	V-Tire Packwheel with Oilite Bearings	
13	101129	Plain Washer 5/8" S.A.E.	2
16	101089	Lock Washer 1/4"	3
25	100303	Oilite Bearing	4
26	101088	Hex Nut 1/4" - UNC	3
27	100162	V-Tire Rim for Oilite Bearing	2
28	100282	V-Tire	1
29	100165	Hex Head Bolt 1/4" - 20 UNC x 2 3/4"	3



**Figure 15 – P-B5 4" x 10" Wire Mesh Packwheel with Oilite Bearings**

All Packwheel Assemblies include A-Bracket, Arms, Pressure Spring Assembly and all Fasteners to Assemble and Attach Assembly to the Planter

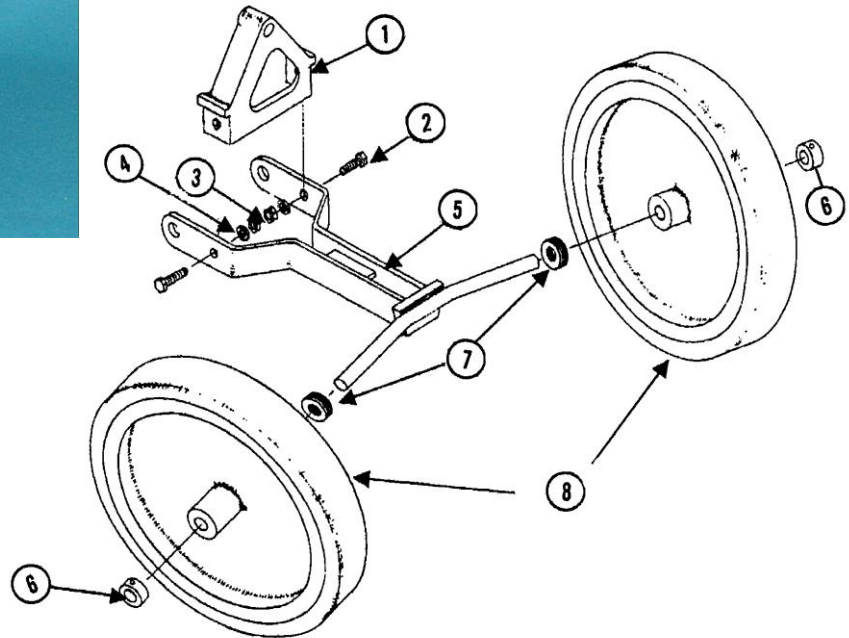
<b>P-B5 4" x 10" Wire Mesh Packwheel with Oilite Bearings</b>			
<b>ITEM</b>	<b>PART #</b>	<b>DESCRIPTION</b>	<b># REQUIRED</b>
	101343	4" x 10" Wire Mesh Packwheel with Oilite Bearings	
25	100303	Oilite Bearing	2



**Figure 16 – P-B6 4" x 12" Concave Packwheel with Scraper**

All Packwheel Assemblies include A-Bracket, Arms, Pressure Spring Assembly and all Fasteners to Assemble and Attach Assembly to the Planter

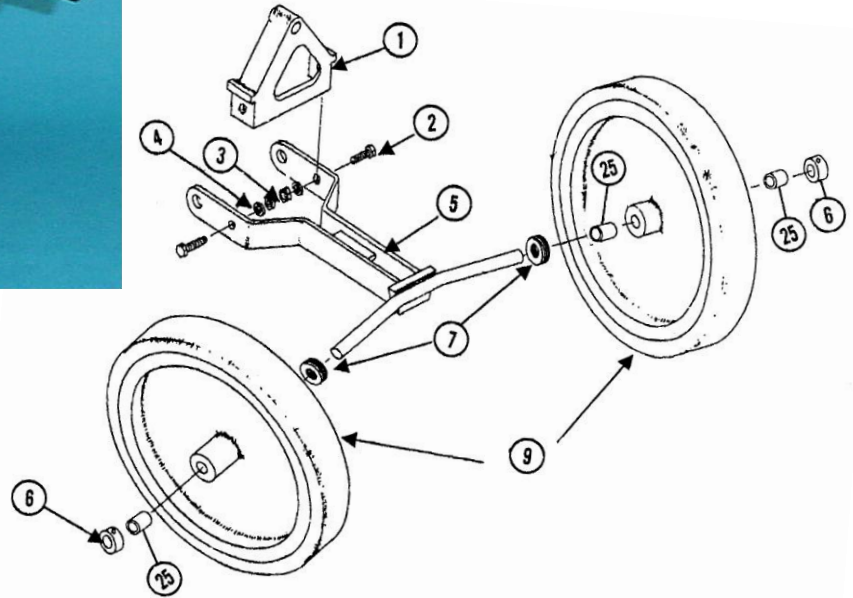
<b>P-B6 - 4" x 12" Concave Packwheel with Scraper</b>		
<b>PART #</b>	<b>DESCRIPTION</b>	<b># REQUIRED</b>
100290	4" x 12" Concave Packwheel Assembly	
100322	Concave Scraper Assembly	1
100324	Concave Scraper Blade	1
101163	Carriage Bolt 1/4" - 20 x 1/2"	2
101089	Hex Nut 1/4" - 20	2
101088	Lock Washer 1/4"	2



**Figure 17 – P-B7 Angled Packwheel with 2 - 1" x 12" Rubber Tires**

All Packwheel Assemblies include A-Bracket, Arms, Pressure Spring Assembly and all Fasteners to Assemble and Attach Assembly to the Planter

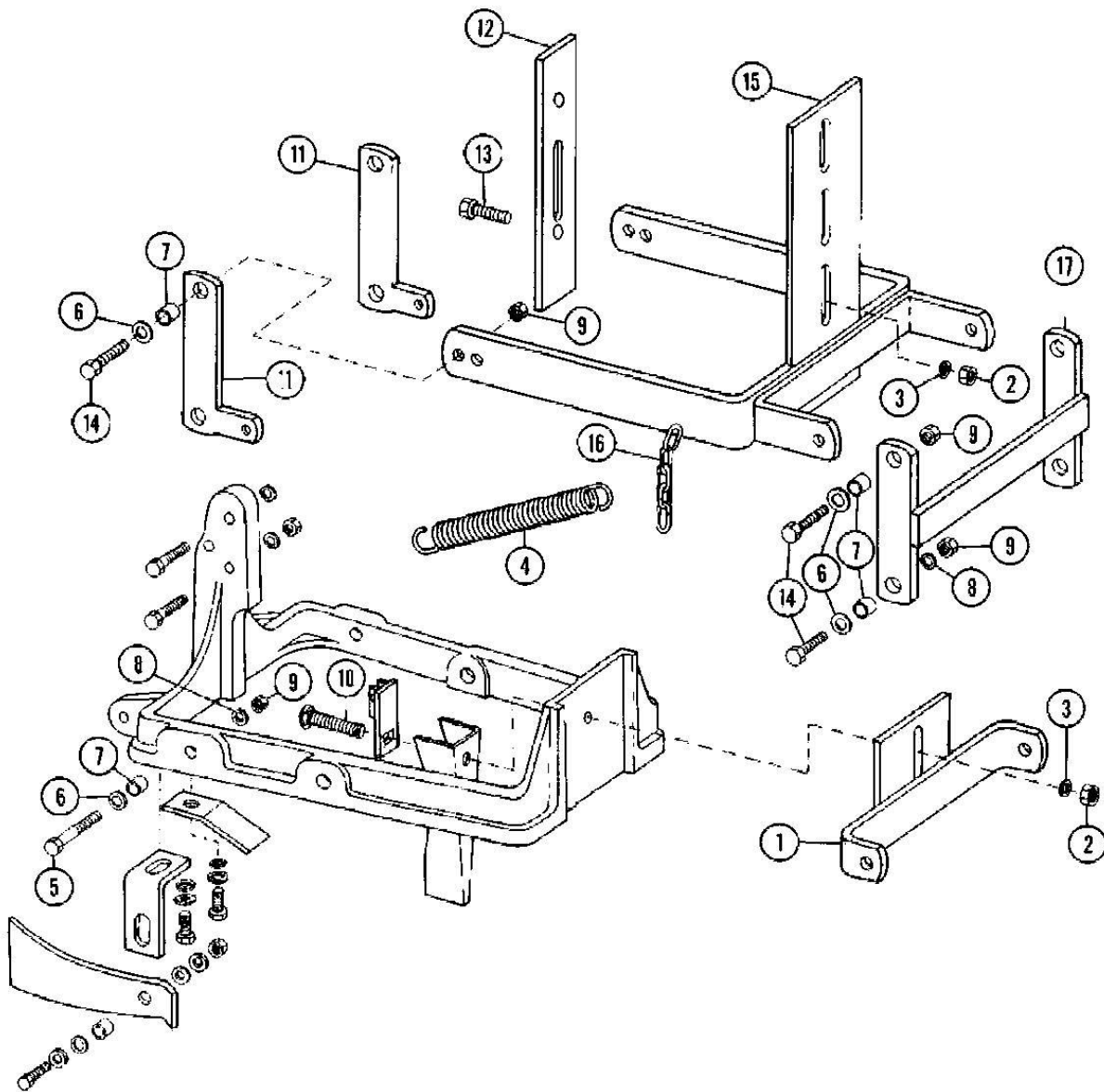
<b>P-B7 Angled Packwheel with 2 - 1" x 12" Tires</b>			
<b>Item</b>	<b>Part #</b>	<b>Description</b>	<b># Required</b>
<b>1 - 8</b>	<b>P-B7</b>	<b>Angled Packwheel Assembly with 2 - 1" x 12" Wheels</b>	<b>1</b>
1	100196	A-Bracket	1
2	101239	Hex Head Bolt 5/16" - 18 UNC x 1 1/4"	2
3	101065	Hex Nut 5/16"	2
4	101066	Lock Washer 5/16"	2
5	100295	Angled Pack Wheel Bracket w/Shaft Collars and Washers	1
6	100124	5/8" Set Collars	2
7	101129	5/8" Flat Washer S.A.E.	6
8	100296	1" x 12" Smooth Crown Rubber Tire	2



**Figure 18 – P-B8 Angled Packwheel with 2 – 2" x 13" Rubber Tires**

All Packwheel Assemblies include A-Bracket, Arms, Pressure Spring Assembly and all Fasteners to Assemble and Attach Assembly to the Planter

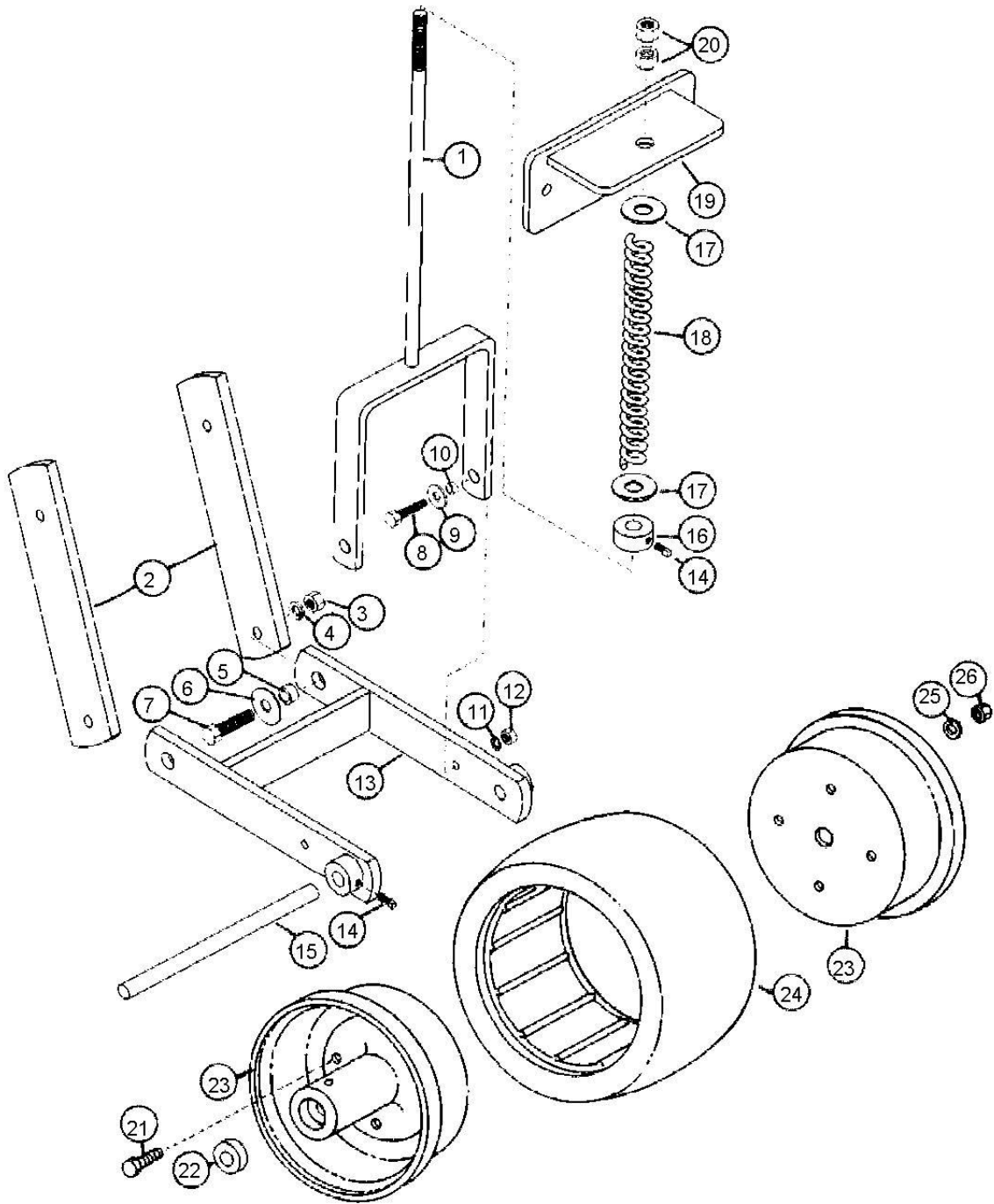
<b>P-B8 Angled Packwheel with 2 - 2" x 13" Rubber Tires</b>			
<b>Item</b>	<b>Part #</b>	<b>Description</b>	<b># Required</b>
<b>1 - 7 &amp; 9,25</b>	<b>P-B8</b>	<b>Angled Packwheel Assembly w/2 - 2" x 13" Tires</b>	<b>1</b>
1	100196	A-Bracket	1
2	101239	Hex Head Bolt 5/16" - 18 UNC x 1 1/4"	2
3	101065	Hex Nut 5/16"	2
4	101066	Lock Washer 5/16"	2
5	100295	Angled Pack Wheel Bracket w/Shaft Collars and Washers	1
6	100124	5/8" Set Collars	2
7	101129	5/8" Flat Washer S.A.E.	6
9	100310	2" x 13" Single Zero Pressure Pack Wheel w/Oilite Bearing	2
25	100303	Oilite Bearing	4



**Figure 19 – Adjustable Spring Flex Drawbar**

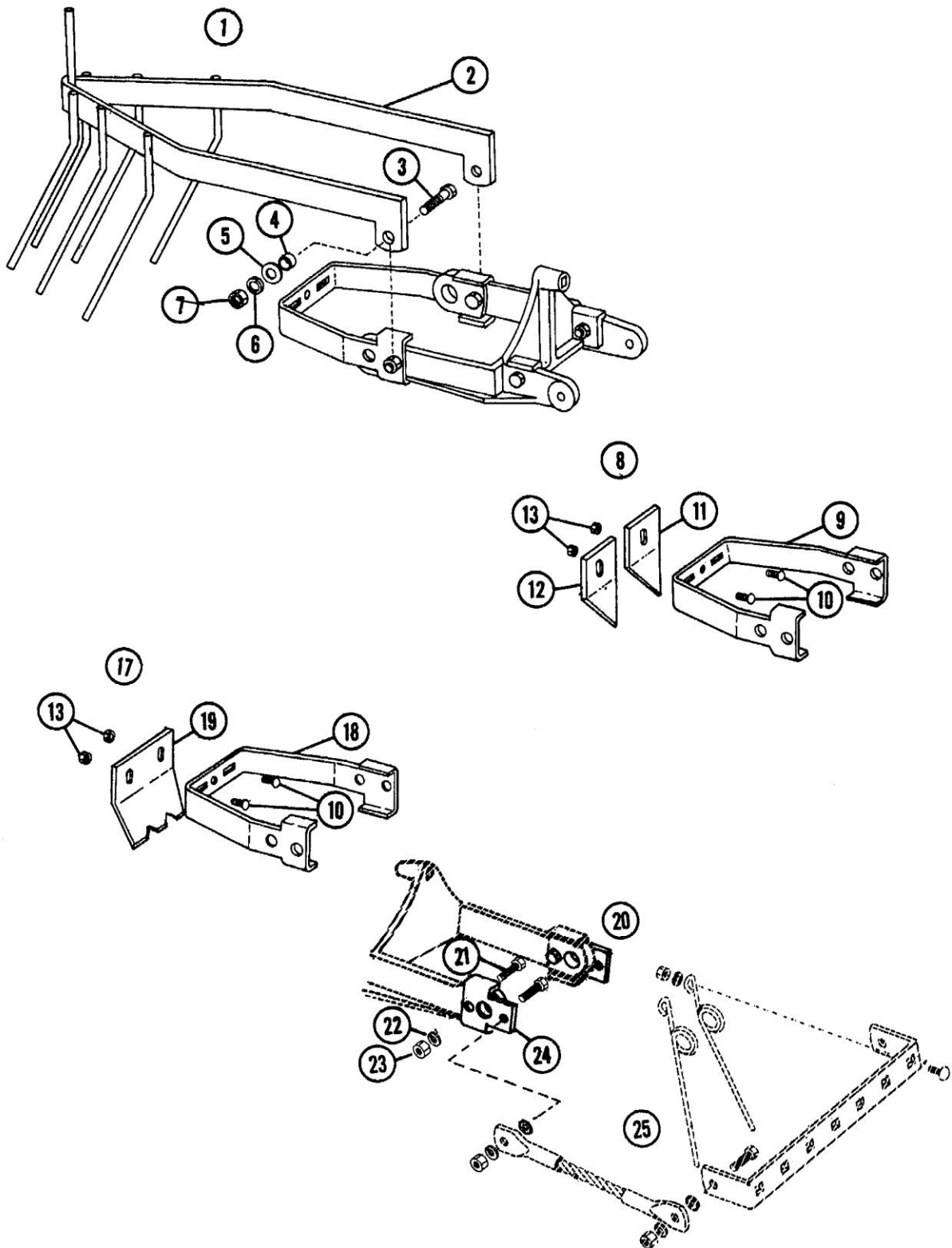


<b>ADJUSTABLE SPRING FLEX DRAWBAR</b>			
<b>Item</b>	<b>Part #</b>	<b>Description</b>	<b># Required</b>
<b>2-9, 11-17</b>	<b>100215</b>	<b>Adjustable Spring Flex Drawbar</b>	
1	100216	Slide Plate	1
2	101037	Hex Nut 1/2" - 13 UNC	3
3	101062	Lock Washer 1/2"	3
4	100106	Spring	2
5	101238	Hex Head Bolt 7/16" - 14 UNC x 2"	2
6	101240	Plain Washer 7/16" - Type A	8
7	100109	Bushing 11/16" x 7/16"	8
8	101094	Lock Washer 7/16"	4
9	101093	Hex Nut 7/16" - 14 UNC	8
10	101264	Carriage Bolt 1/2" - 13 IMC x 2 1/2"	1
11	100219	Arm	2
12	100220	Plate	1
13	101053	Hex Head Bolt 1/2" - 13 UNC x 1 3/4"	2
14	101092	Hex Head bolt 7/16" - 14 UNC x 1 1/2"	6
15	100221	Frame	1
16	100222	Chain	2
17	100223	"H"	1



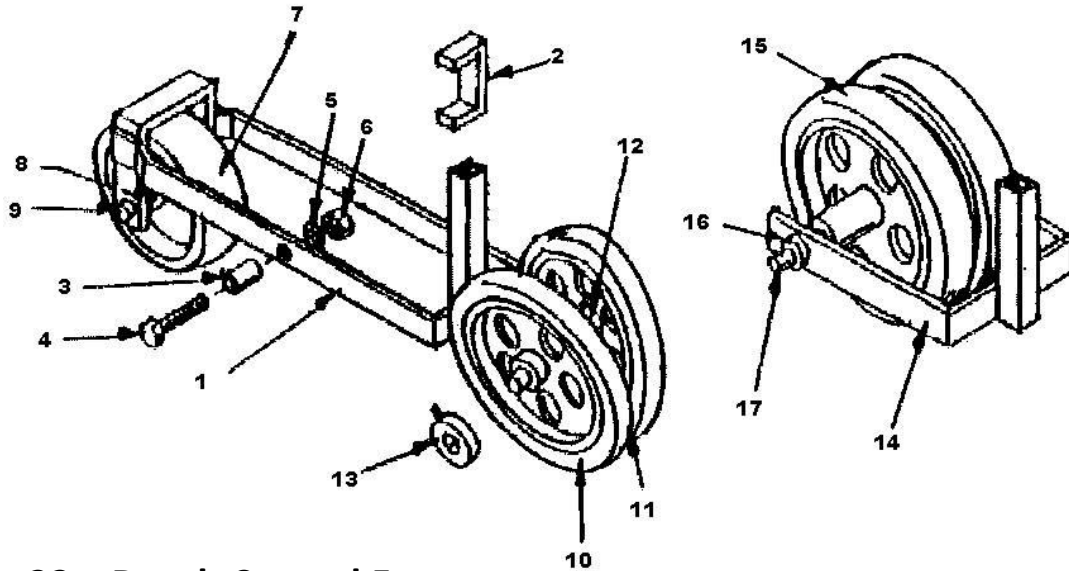
**Figure 20 – Forward Presswheel Assembly**

<b>FORWARD PRESSWHEEL</b>			
<b>Item</b>	<b>Part #</b>	<b>Description</b>	<b># Required</b>
<b>1 - 20</b>	<b>101192</b>	<b>Presswheel Assembly Less Wheel</b>	<b>1</b>
	<b>F410R</b>	<b>Forward Presswheel Assembly</b>	
1	101197	Yoke	1
2	101196	Attach Arm	2
3	101093	Hex Nut 7/16" - 14 UNC	2
4	101094	Lock Washer 7/16"	2
5	100109	Bushing 7/16" x 7/16"	2
6	101240	Plain Washer 7/16" Type A	2
7	101092	Hex Head Bolt 7/16" - 14 UNC x 1 1/2"	2
8	101239	Hex Head Bolt 5/16" - 18 UNC x 1 1/4"	2
9	101090	Plain Washer 5/16" Type A	2
10	101200	Bushing 5/16" x 5/16"	2
11	101066	Lock Washer 5/16"	2
12	101065	Hex Nut 5/16" - 18 UNC	2
13	101195	H-Frame	1
14	101286	Square Head Set Screw 1/4" - 20 UNC x 1/2"	3
15	101201	Axle	1
16	100190	Set Collar 1/2"	1
17	101019	Plain Washer 1/2" Type A	1
18	101186	Spring	1
19	101198	Spring Bracket	1
20	101037	Hex Nut 1/2" - 13 UNC	2
<b>21 - 26</b>	<b>101236</b>	<b>4" x 10" Rubber Tire with Ball Bearings</b>	<b>1</b>
21	101241	Hex Head bolt 1/4" - 20 UNC x 1"	4
23	100304	4" x 10" Rim for Ball Bearing	2
24	100285	4" x 10" Tire	1
25	101089	Lock Washer 1/4"	4
26	101088	Hex Nut 1/4" - 20 UNC	4
22	100198	Ball Bearing	2



**Figure 21 – Cover Rake and Scraper Assemblies**

<b>COVER RAKE AND SCRAPER ASSEMBLIES</b>			
<b>ITEM</b>	<b>PART #</b>	<b>DESCRIPTION</b>	<b># REQUIRED</b>
<b>1</b>	<b>100313</b>	<b>Cover Rake Assembly</b>	<b>1</b>
2	100314	Rake	1
3	101092	Hex Head Bolt 7/16" - 14 UNC x 1 1/2"	2
4	100176	Bushing 7/16" x 7/32"	2
5	101240	Plain Washer 7/16" Type A	2
6	101094	Lock Washer 7/16"	2
7	11093	Hex Nut 7/16" - 14 UNC	2
<b>8</b>	<b>100315</b>	<b>V-Tire Pack Wheel Scraper Assembly</b>	<b>1</b>
9	100316	Scraper Bracket	1
10	101163	Carriage Bolt 1/4" x- 20 UNC x 1/2"	2
11	100317	Left Scraper	1
12	100318	Right Scraper	1
13	101089	Hex Nut 1/4" - 20 UNC	1
<b>17</b>	<b>100322</b>	<b>4" x 12" Concave Pack Wheel Scraper Assembly</b>	<b>1</b>
10	101163	Carriage bolt 1/4" - 20 UNC x 1/2"	2
13	101089	Hex Nut 1/4" - 20 UNC	2
18	100316	Scraper Bracket	1
19	100324	Scraper Blade	1
<b>20</b>	<b>100225</b>	<b>Vibra Rake Mounting Bracket</b>	<b>1</b>
21	101124	Hex Head Bolt 7/16" - 14 UNC x 1 1/4"	2
22	101094	Lock Washer 7/16"	2
23	101093	Hex Nut 7/16" - 14 UNC	2
24	100207	Bracket	2
25	101087	Vibra Rake	1



**Figure 22 – Depth Control Frame**

<b>DEPTH CONTROL FRAME</b>			
<b>Item</b>	<b>Part #</b>	<b>Description</b>	<b># Required</b>
<b>1</b>	<b>101341</b>	<b>Depth Control Frame with C-Stop (Choice of Vertical or Angle Packwheel Frame Assembly)</b>	<b>1</b>
2	101367	C-Stop	1
3	101347	Bushing 7/16" x 1 9/16"	2
4	101368	Hex Head Bolt 7/16" - 14 UNC x 2 1/2"	2
5	101094	Lock Washer 7/16"	2
6	101093	Hex Nut 7/16" - 14 UNC	2
<b>7</b>	<b>101236</b>	<b>4" x 10" Packwheel with Ball Bearings</b>	<b>1</b>
8	100198	Ball Bearing	2
9	101201	Axle	1
<b>10</b>	<b>101342-A</b>	<b>Angle Rear Packwheel Assembly</b>	<b>1</b>
11	100312	2" x 13" Packwheels with Oilite Bearings	2
12	100302	Oillite Bearing	4
13	101124	Set Collar	2
<b>14</b>	<b>101341-Y</b>	<b>Vertical Rear Packwheel Assembly</b>	<b>1</b>
15	100277	2" x 13" Packwheel	2
16	101153	Flange Bearing	2
17	100198	Axle	1
18	101165	Flange 40 MST	4