

PLASMA CUTTING

The new series of Torches
without High Frequency Start

PT-20C

PT-25C

PT-40

PT-60

PTM-60

PT-80

PTM-80

PT-100

PTM-100

PT-105Plus

PTM-105Plus

TH-70

TM-70

TH-125

TM-125

● Higher performances

● Cleaner cut

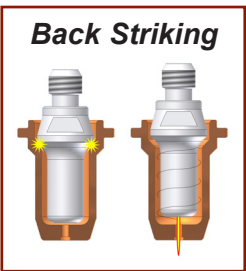
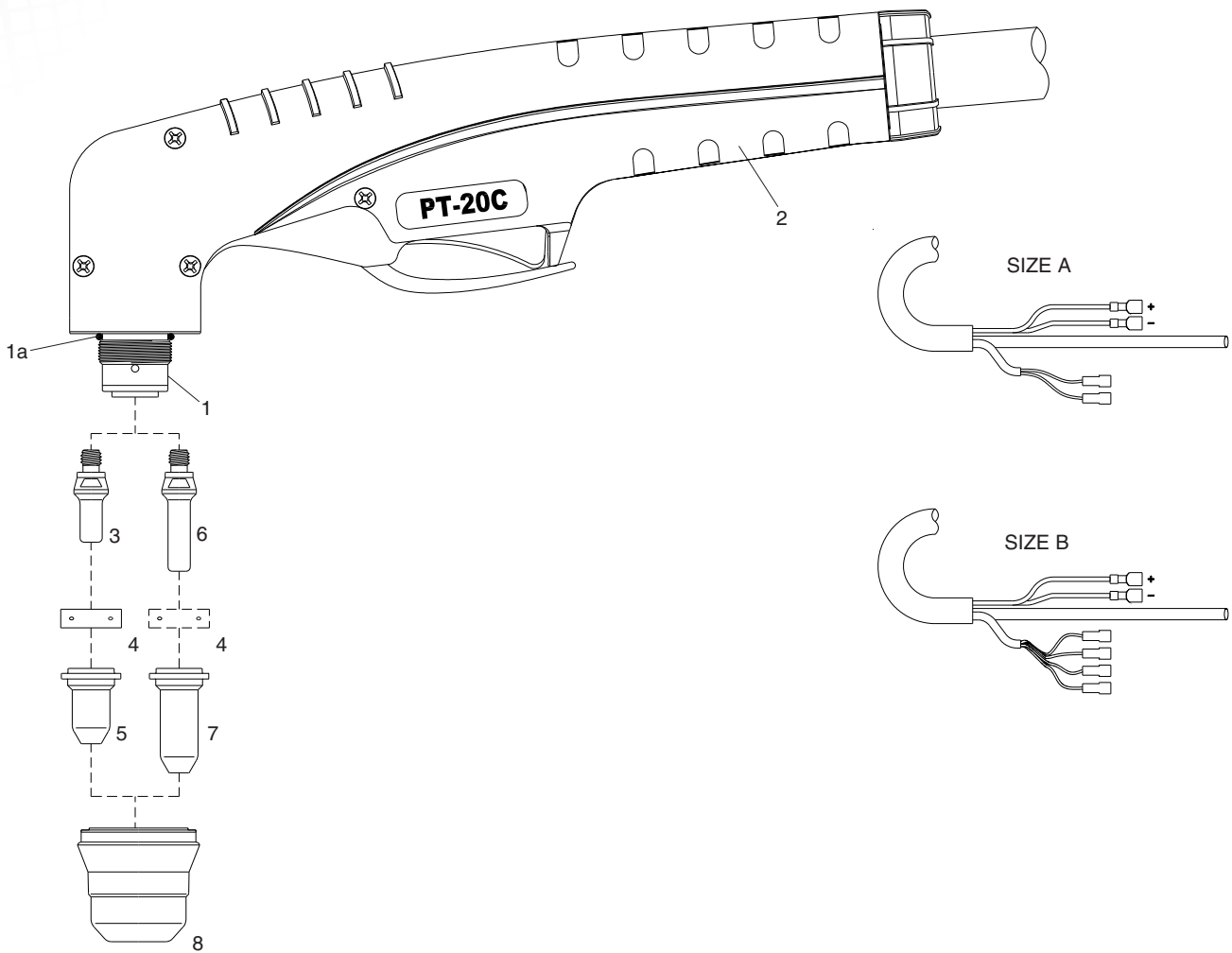
● Faster speed



PT-20C

Technical Data

Max Current :	10-25 Amps
Duty Cycle:	25 Amps 35%
Gas:	Air/N2
Gas Pressure:	30 psi (2 bar)
Gas Flow:	65 scfh (30 lpm)
Pilot :	Electrode to Tip
Ignition:	Without HF





PT-20C

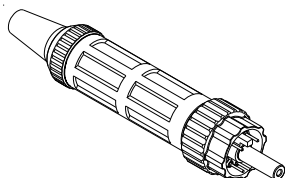
Air or N₂

● **Standard Layout**

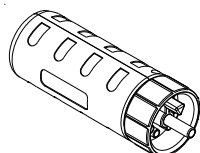
**Air Filter
AT-1000**



**Connection
Euro Connector**



**EASYFIT
Connection**



Replacement Parts

Torch parts

Item	Description	Code
1 ●	PT-20C Hand Torch Head	09600
1a ●	O-Ring	51620.60
2 ●	Handle with parts	09605
3 ●	Electrode, Back Striking	52582
4 ●	Swirl ring	60028
5	Tip, Contact Cutting, ø 0.65, 10-20A, Back Striking	51318.06
●	Tip, Contact Cutting, ø 0.8, 20-30A, Back Striking	51318.08
6	Extended Electrode, Back Striking	52583
7	Extended Tip, Contact Cutting, ø 0.65, 10-20A, Back Striking	51318L.06
	Extended Tip, Contact Cutting, ø 0.8, 20-30A, Back Striking	51318L.08
8	Retaining Cap, 1 hole	60389K1
●	Retaining Cap, 2 holes	60389K
N/S ●	Wrench for electrode	60368

Torches and Leads

A	PT-20C Hand Torch, 4m (12.5 ft) Leads, Coaxial Cable	09620CX
	PT-20C Lead Assembly, Hand, 4m (12.5 ft) Length, Coaxial Cable	09680CX
B	PT-20C Hand Torch, 4m (12.5 ft) Leads, Coaxial Cable	09622CX
	PT-20C Lead Assembly, Hand, 4m (12.5 ft) Length, Coaxial Cable	09682CX

Accessories

Item	Description	Code
N/S	Circle Cutting Attachment	51866

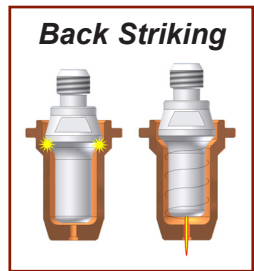
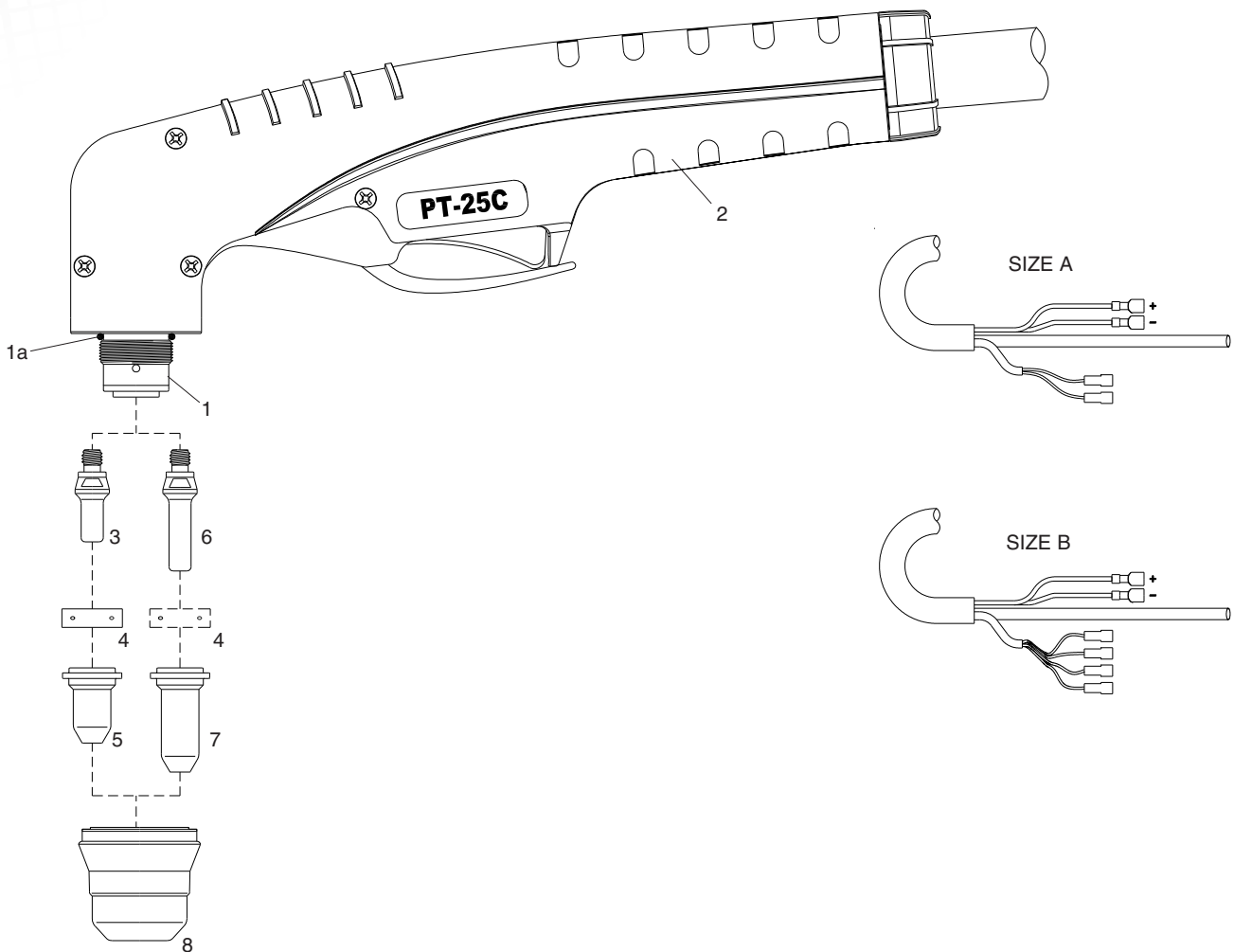
**Torches with different cable covers
and connectors available on request.**



PT-25C

Technical Data

Current : 10-25 Amps
Duty Cycle: 25 Amps 60%
Gas: Air/N2
Gas Pressure: 40 psi (2.8 bar)
Gas Flow: 85 scfh (40 lpm)
Pilot : Electrode to Tip
Ignition: Without HF





PT-25C

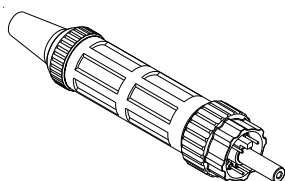
Air or N₂

● **Standard Layout**

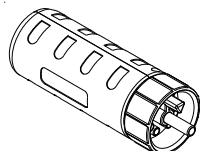
**Air Filter
AT-1000**



**Connection
Euro Connector**



**EASYFIT
Connection**



Replacement

Torch parts

Item	Description	Code
1	● PT-25C Hand Torch Head	09601
1a	● O-Ring	51620.60
2	● Handle with parts	09605
3	● Electrode, Back Striking	52582
4	● Swirl ring	60028
5	Tip, Contact Cutting, \varnothing 0.65, 10-20A, Back Striking	51318.06
	● Tip, Contact Cutting, \varnothing 0.8, 20-30A, Back Striking	51318.08
6	Extended Electrode, Back Striking	52583
7	Extended Tip, Contact Cutting, \varnothing 0.65, 10-20A, Back Striking	51318L.06
	Extended Tip, Contact Cutting, \varnothing 0.8, 20-30A, Back Striking	51318L.08
8	Retaining Cap, 1 hole	60389K1
	● Retaining Cap, 2 holes	60389K
	Retaining Cap, 4 holes	60389K4
N/S	● Wrench for electrode	60368

Torches and Leads

A	PT-25C Hand Torch, 4m (12.5 ft) Leads, Coaxial Cable	09625CX
	PT-25C Lead Assembly, Hand, 4m (12.5 ft) Length, Coaxial Cable	09680CX
B	PT-25C Hand Torch, 4m (12.5 ft) Leads, Coaxial Cable	09627CX
	PT-25C Lead Assembly, Hand, 4m (12.5 ft) Length, Coaxial Cable	09682CX

Accessories

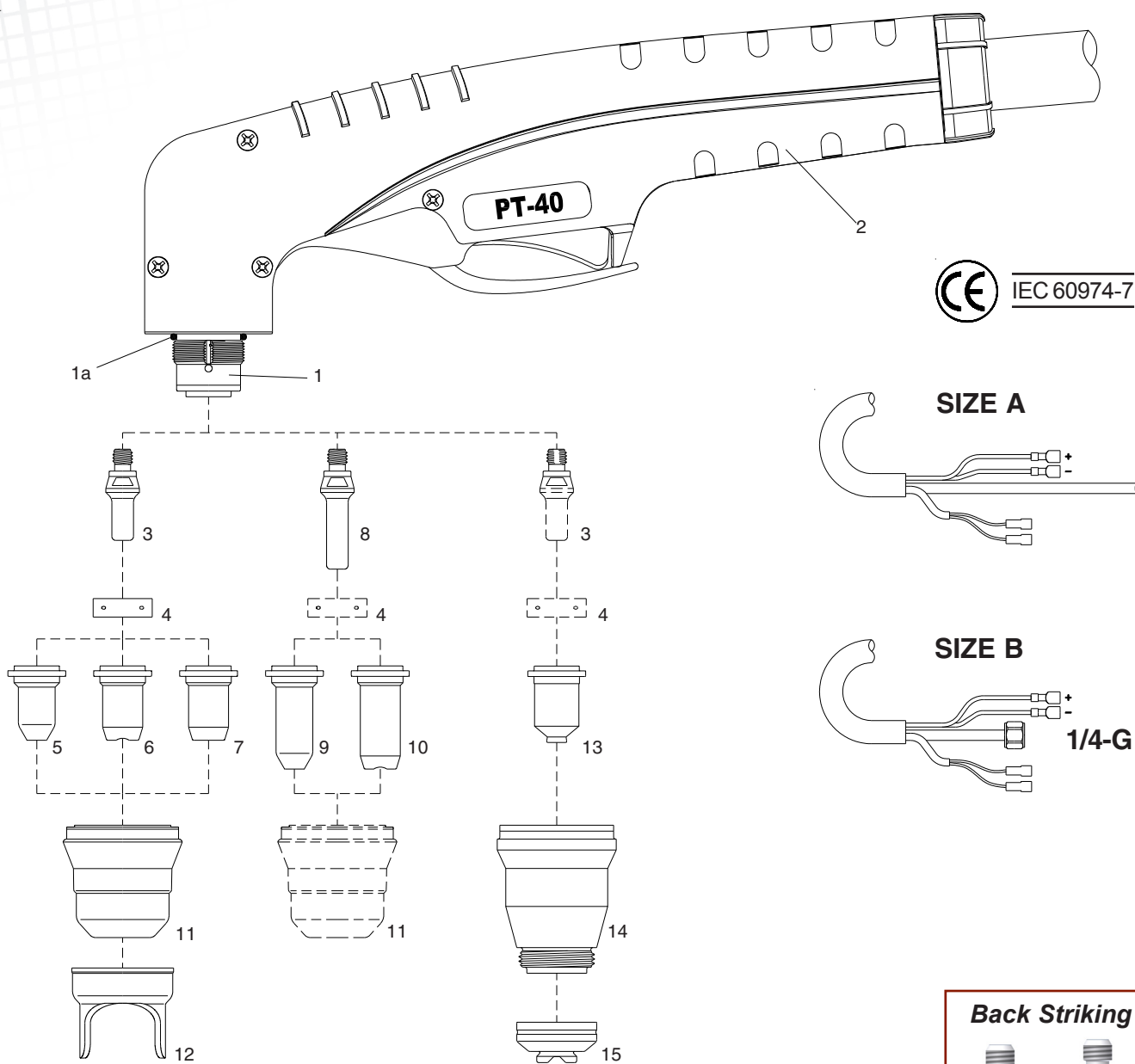
Item	Description	Code
N/S	Circle Cutting Attachment	51866

**Torches with different cable covers
and connectors available on request.**

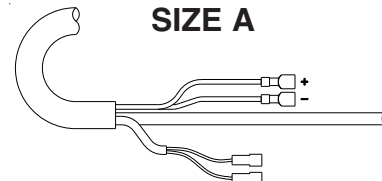
Technical Data

Current : 10-40 Amps
Duty Cycle: 40 Amps 60%
Gas: Air/N2
Gas Pressure: 65-75 psi (4.4-5.0 bar)
Gas Flow: 320 scfh (150 lpm)
Pilot : Electrode to Tip (18-22A)
Ignition: Without HF

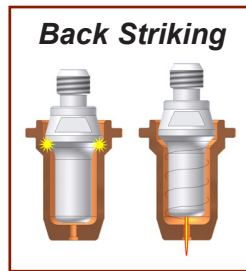
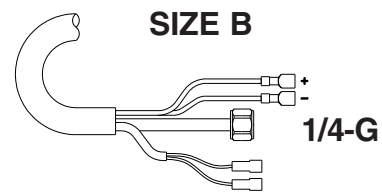
For the correct operation please use:
 3-Ways Solenoid Valve, inside orifice
 2.3-2.7mm - (0.090-0.106 inches)



SIZE A



SIZE B



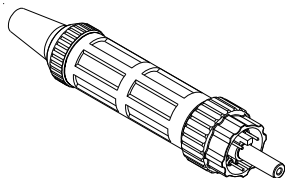
Air or N₂

● **Standard Layout**

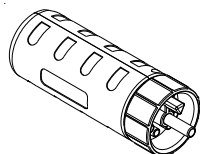
**Air Filter
AT-1000**



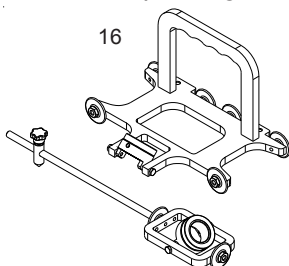
**Connection
Euro Connector**



**EASYFIT
Connection**



**Bevel Tool
Patent pending**



Replacement Parts

Torch parts

Item	Description	Code
1	● PT-40 Hand Torch Head	09602
1a	● O-Ring	51620.60
2	● Handle with parts	09605
3	● Electrode, Back Striking	52582
4	● Swirl ring	60028
5	Tip, Contact Cutting, ø 0.65, 10-20A, Back Striking	51318.06
	Tip, Contact Cutting, ø 0.8, 20-30A, Back Striking	51318.08
	● Tip, Contact Cutting, ø 0.9, 30-40A, Back Striking	51318.09
6	Tip, Contact Cutting, ø 0.9, 30-40A, Back Striking	51312P.09
7	Flat Tip, Cutting, ø 0.9, 30-40A, Back Striking	51313P.09
	Flat Tip, Cutting, ø 1.0, 40-50A, Back Striking	51313P.10
8	Extended Electrode, Back Striking	52583
9	Extended Tip, Contact Cutting, ø 0.65, 10-20A, Back Striking	51318L.06
	Extended Tip, Contact Cutting, ø 0.8, 20-30A, Back Striking	51318L.08
10	Extended Tip, Contact Cutting, ø 0.9, 30-40A, Back Striking	51314.09
11	● Retaining Cap, 6 holes	60389
	Retaining Cap, 6 holes, Maximum Life	60389S
12	Double Pointed Spacer (for use with item 5 and 7 only)	60432
N/S	● Wrench for electrode	60368

Torches and Leads

A	PT-40 Hand Torch, 4m (12.5 ft) Leads, Coaxial Cable	09630CX
	PT-40 Hand Torch, 6m (20 ft) Leads, Coaxial Cable	09631CX
	PT-40 Lead Assembly, Hand, 4m (12.5 ft) Length, Coaxial Cable	09685CX
	PT-40 Lead Assembly, Hand, 6m (20 ft) Length, Coaxial Cable	09686CX
B	PT-40 Hand Torch, 4m (12.5 ft) Leads, Coaxial Cable	09632CX
	PT-40 Hand Torch, 6m (20 ft) Leads, Coaxial Cable	09633CX
	PT-40 Lead Assembly, Hand, 4m (12.5 ft) Length, Coaxial Cable	09687CX
	PT-40 Lead Assembly, Hand, 6m (20 ft) Length, Coaxial Cable	09688CX

Accessories

Item	Description	Code
13	Contact Tip, ø 0.9, 30-40A, Back Striking	51318C.09
	Contact Tip, ø 1.0, 40-50A, Back Striking	51318C.10
14	Shield Cup Body	60389C
15	Shield Cap, Hand	60485
N/S	Circle Cutting Attachment	51866
16	BEVEL TOOL	51880

**Torches with different cable covers
and connectors available on request.**

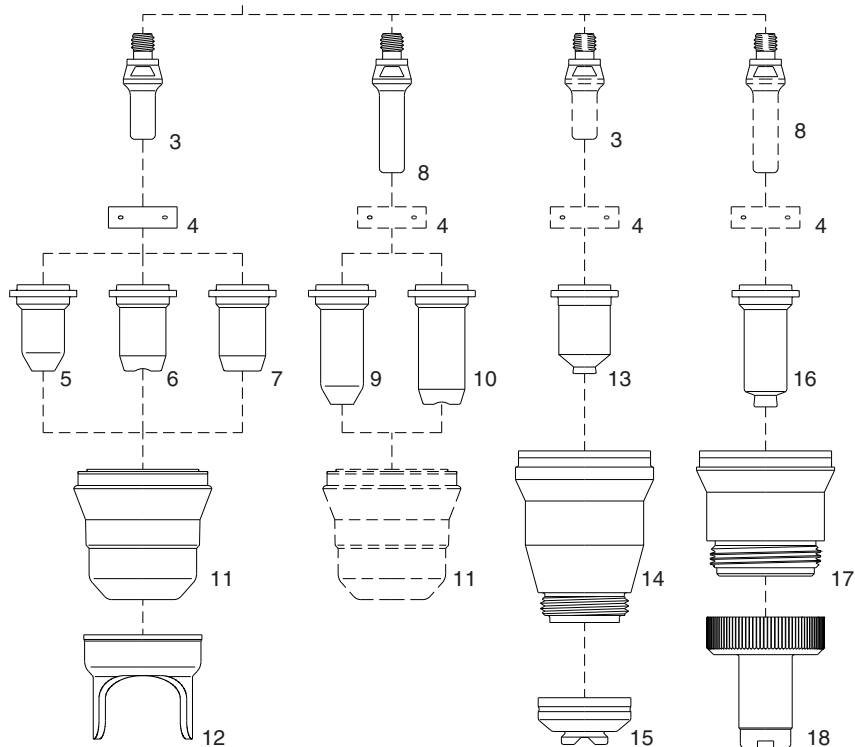
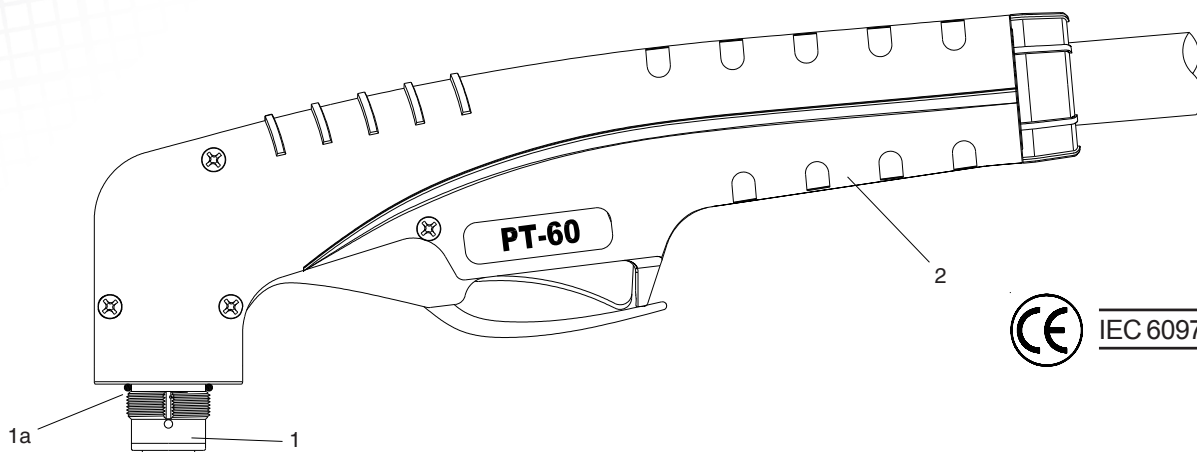


PT-60

Technical Data

Current : 10-60 Amps
Duty Cycle: 60 Amps 80%
Gas: Air/N2
Gas Pressure: 65-75 psi (4.4-5.0 bar)
Gas Flow: 320 scfh (150 lpm)
Pilot : Electrode to Tip (18-22A)
Ignition: Without HF

For the correct operation please use:
 3-Ways Solenoid Valve, inside orifice
 2.3-2.7mm - (0.090-0.106 inches)



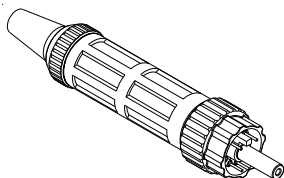
Air or N₂

● **Standard Layout**

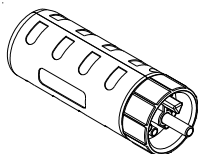
**Air Filter
AT-1000**



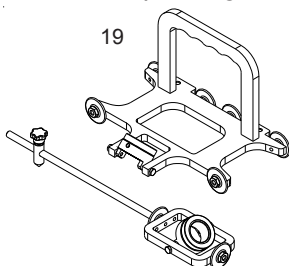
**Standard
Connection
Euro Connector**



**EASYFIT
Connection**



**Bevel Tool
Patent pending**



Replacement Parts

Torch parts

Item	Description	Code
1	● PT-60 Hand Torch Head	09603
1a	● O-Ring	51620.60
2	● Handle with parts	09605
3	● Electrode, Back Striking	52582
4	● Swirl ring	60028
5	Tip, Contact Cutting, \varnothing 0.65, 10-20A, Back Striking	51318.06
	Tip, Contact Cutting, \varnothing 0.8, 20-30A, Back Striking	51318.08
	Tip, Contact Cutting, \varnothing 0.9, 30-40A, Back Striking	51318.09
6	Tip, Contact Cutting, \varnothing 0.9, 30-40A, Back Striking	51312P.09
7	Flat Tip, Cutting, \varnothing 1.0, 40-50A, Back Striking	51313P.10
	● Flat Tip, Cutting, \varnothing 1.1, 50-60A, Back Striking	51313P.11
8	Extended Electrode, Back Striking	52583
9	Extended Tip, Contact Cutting, \varnothing 0.65, 10-20A, Back Striking	51318L.06
	Extended Tip, Contact Cutting, \varnothing 0.8, 20-30A, Back Striking	51318L.08
10	Extended Tip, Contact Cutting, \varnothing 0.9, 30-40A, Back Striking	51314.09
11	● Retaining Cap, 6 holes	60389
	Retaining Cap, 6 holes, Maximum Life	60389S
12	● Double Pointed Spacer (for use with item 5 and 7 only)	60432
N/S	● Wrench for electrode	60368

Torches and Leads

PT-60	Hand Torch, 6m (20 ft) Leads, Coaxial Cable	09637CX
PT-60	Lead Assembly, Hand, 6m (20 ft) Length, Coaxial Cable	09689CX

Accessories

Item	Description	Code
13	Contact Tip, \varnothing 0.9, 30-40A, Back Striking	51318C.09
	Contact Tip, \varnothing 1.0, 40-50A, Back Striking	51318C.10
	Contact Tip, \varnothing 1.1, 50-60A, Back Striking	51318C.11
14	Shield Cup Body	60389C
15	Shield Cap, Hand	60485
16	Extended Shielded Tip, \varnothing 0.9, 40A, Back Striking	51318LC.09
	Extended Shielded Tip, \varnothing 1.0, 50A, Back Striking	51318LC.10
	Extended Shielded Tip, \varnothing 1.1, 60A, Back Striking	51318LC.11
17	Shield Cup Body	60389LC
18	Extended Shield Cap 40-60A	60512L
N/S	Circle Cutting Attachment	51866
19	BEVEL TOOL	51880

**Torches with different cable covers
and connectors available on request.**

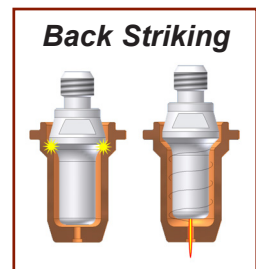
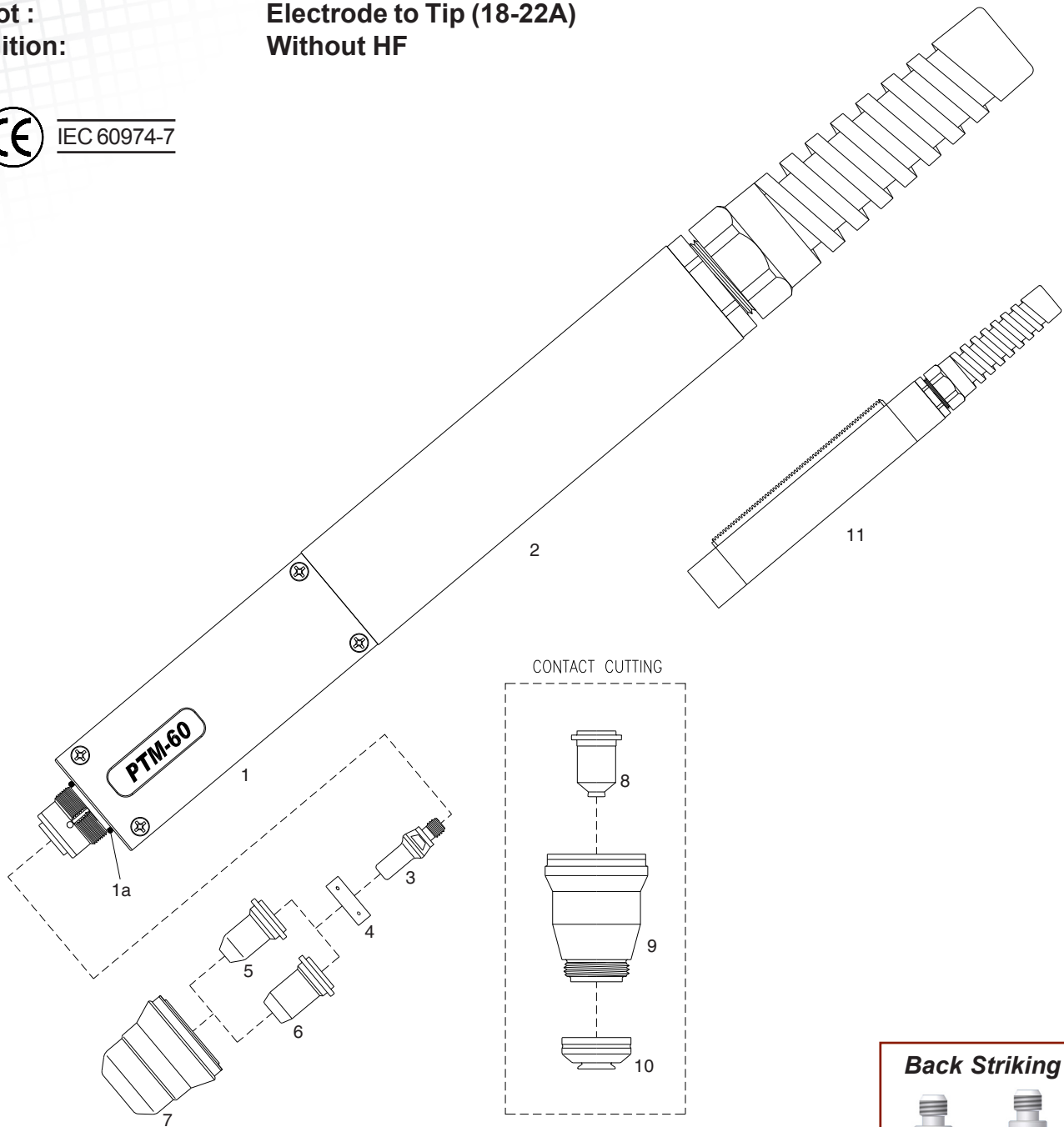


PTM-60

Technical Data

Current :	10-60 Amps
Duty Cycle:	60 Amps 80%
Gas:	Air/N2
Gas Pressure:	65-75 psi (4.4-5.0 bar)
Gas Flow:	320 scfh (150 lpm)
Pilot :	Electrode to Tip (18-22A)
Ignition:	Without HF

For the correct operation please use:
 3-Ways Solenoid Valve, inside orifice
 2.3-2.7mm - (0.090-0.106 inches)





PTM-60

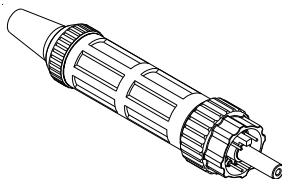
Air or N₂

● **Standard Layout**

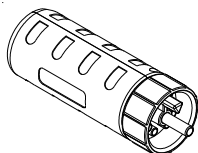
**Air Filter
AT-1000**



**Standard
Connection
Euro Connector**



**EASYFIT
Connection**



Replacement Parts

Torch parts

Item	Description	Code
1	● PTM-60 Machine Torch Head	09613
1a	● O-Ring	51620.60
2	● Fiberglass Positioning Tube	07218
3	● Electrode, Back Striking	52582
4	● Swirl ring	60028
5	Tip, Contact Cutting, \varnothing 0.65, 10-20A, Back Striking	51318.06
	Tip, Contact Cutting, \varnothing 0.8, 20-30A, Back Striking	51318.08
	Tip, Contact Cutting, \varnothing 0.9, 30-40A, Back Striking	51318.09
6	Flat Tip, Cutting, \varnothing 1.0, 40-50A, Back Striking	51313P.10
	● Flat Tip, Cutting, \varnothing 1.1, 50-60A, Back Striking	51313P.11
7	Retaining Cap, 6 holes	60389
	● Retaining Cap, 6 holes, Maximum Life	60389S
N/S	● Wrench for electrode	60368

Torches and Leads

PTM-60 Machine Torch, 6m (20 ft) Leads, Coaxial Cable	09651CX
PTM-60 Lead Assembly, Machine, 6m (20 ft) Length, Coaxial Cable	09691CX

Accessories

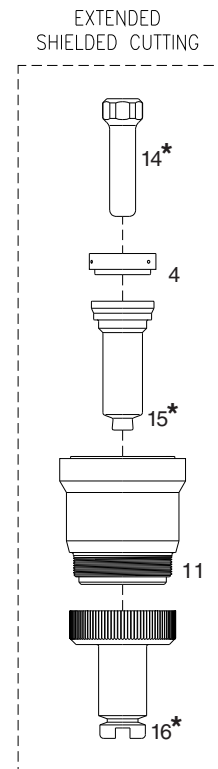
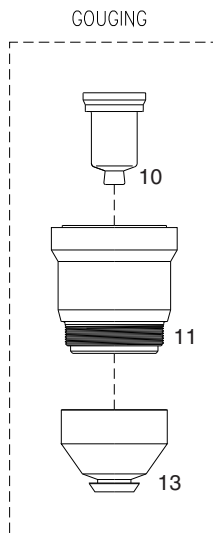
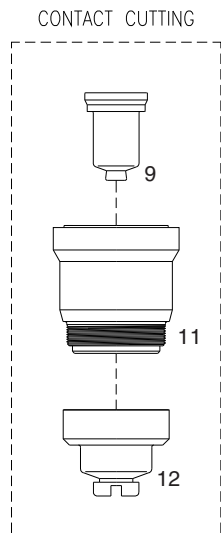
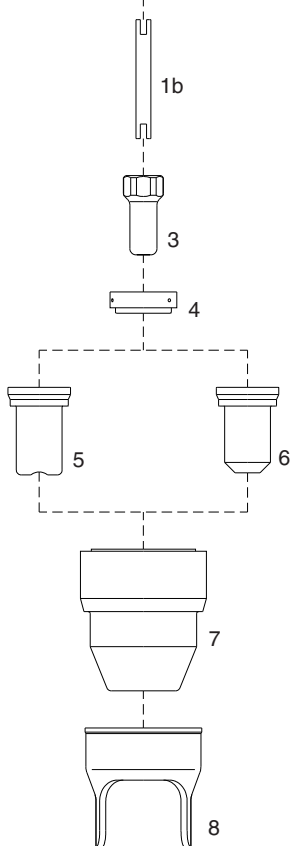
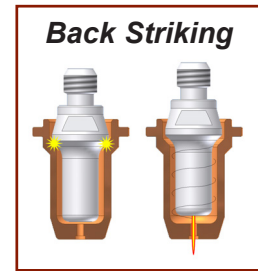
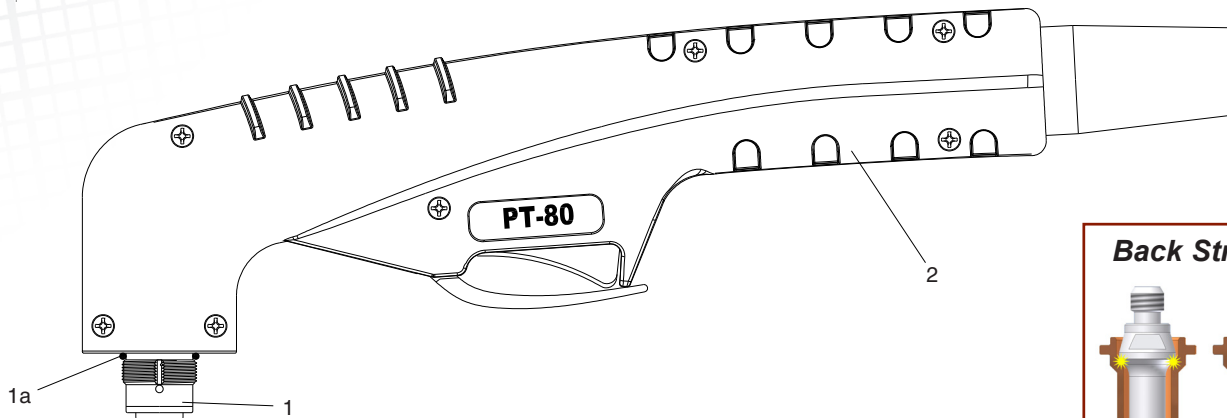
Item	Description	Code
8	Contact Tip, \varnothing 0.9, 30-40A, Back Striking	51318C.09
	Contact Tip, \varnothing 1.0, 40-50A, Back Striking	51318C.10
	Contact Tip, \varnothing 1.1, 50-60A, Back Striking	51318C.11
9	Shield Cup Body	60389C
10	Shield Cap, Machine	60487
11	Fiberglass Positioning Tube with Rack	07219

**Torches with different cable covers
and connectors available on request.**

Technical Data

Current : 30-80 Amps
Duty Cycle: 80 Amps 60%
Gas: Air/N2
Gas Pressure: 65-75 psi (4.4-5.0 bar)
Gas Flow: 340 scfh (160 lpm)
Pilot : Electrode to Tip (18-22A)
Ignition: Without HF

For the correct operation please use:
 3-Ways Solenoid Valve, inside orifice
 2.7-3.0 mm - (0.106-0.118 inches)



*** While stocks last**



PT-80

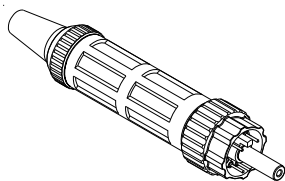
Air or N₂

● **Standard Layout**

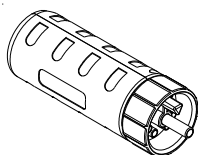
**Air Filter
AT-1000**



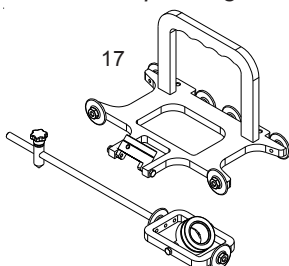
**Standard
Connection
Euro Connector**



**EASYFIT
Connection**



**Bevel Tool
Patent pending**



Replacement Parts

Torch parts

Item	Description	Code
1	● PT-80 Hand Torch Head	09800
1a	● O-Ring	51620.60
1b	● Cooling Tube	09800.42
2	● Handle with parts	09705
3	● Electrode, Back Striking	52558
4	● Swirl ring	60027
5	Tip, Contact Cutting, ø 0.9, 30-40A, Back Striking	51310.09
6	Tip, Cutting, ø 1.0, 40-50A, Back Striking	51311.10
	Tip, Cutting, ø 1.1, 50-60A, Back Striking	51311.11
	Tip, Cutting, ø 1.2, 60-70A, Back Striking	51311.12
	● Tip, Cutting, ø 1.3, 70-80A, Back Striking	51311.13
7	● Retaining Cap	60510
8	● Double Pointed Spacer (for use with item 6 only)	60434
N/S	● Wrench for electrode	60368

Torches and Leads

PT-80	Hand Torch, 6m (20 ft) Leads, Coaxial Cable	09821CX
PT-80	Hand Torch, 12m (40 ft) Leads, Coaxial Cable	09826CX
PT-80	Lead Assembly, Hand, 6m (20 ft) Length, Coaxial Cable	09781CX
PT-80	Lead Assembly, Hand, 12m (40 ft) Length, Coaxial Cable	09786CX

Accessories

Item	Description	Code
9	Contact Tip, ø 1.0, 40-50A, Back Striking	51311S.10
	Contact Tip, ø 1.1, 50-60A, Back Striking	51311S.11
	Contact Tip, ø 1.2, 60-70A, Back Striking	51311S.12
	Contact Tip, ø 1.3, 70-80A, Back Striking	51311S.13
10	Tip, Gouging, 80A, Back Striking	51311G.16
11	Shield Cup Body	60511
12	Shield Cap, Hand	60504
13	Shield Cap, Gouging	60508
14*	Extended Electrode	52558L
15*	Extended Shielded Tip, ø 1.0, 40-50A	51311L.10
	Extended Shielded Tip, ø 1.1, 50-60A	51311L.11
	Extended Shielded Tip, ø 1.2, 60-70A	51311L.12
	Extended Shielded Tip, ø 1.3, 70-80A	51311L.13
16*	Extended Shield Cap, Hand	60504L
N/S	Circle Cutting Attachment	51853
17	BEVEL TOOL	51880

**Torches with different cable covers
and connectors available on request.**

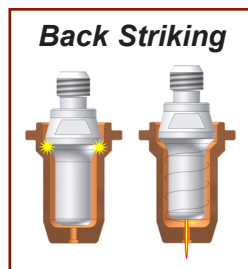
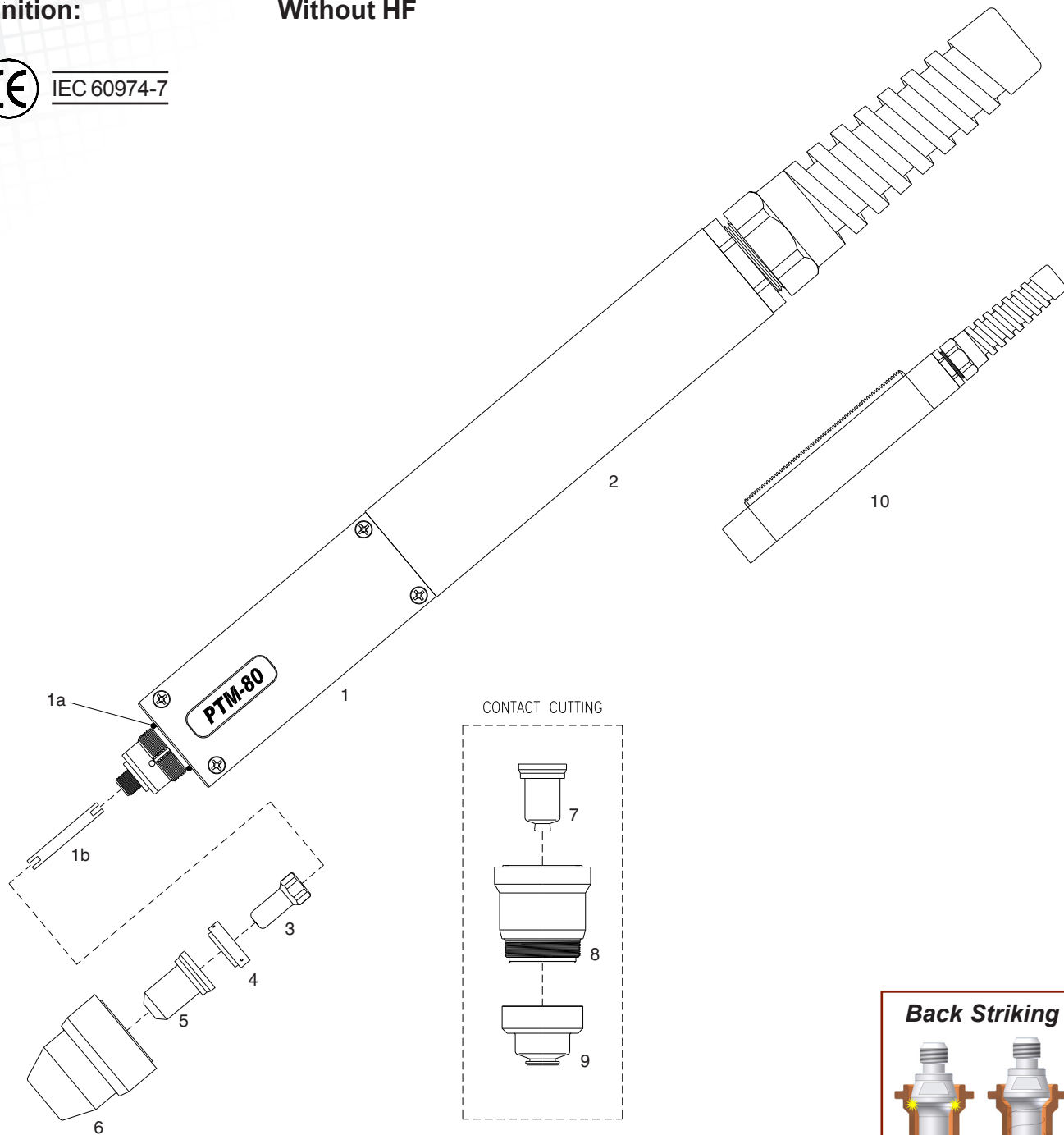


PTM-80

Technical Data

Current :	40-80 Amps
Duty Cycle:	80 Amps 60%
Gas:	Air/N2
Gas Pressure:	65-75 psi (4.4-5.0 bar)
Gas Flow:	340 scfh (160 lpm)
Pilot :	Electrode to Tip (18-22A)
Ignition:	Without HF

For the correct operation please use:
3-Ways Solenoid Valve, inside orifice
2.7-3.0mm - (0.106-0.118 inches)





PTM-80

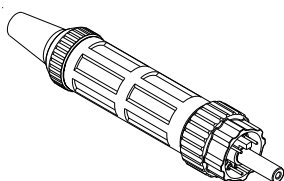
Air or N₂

● **Standard Layout**

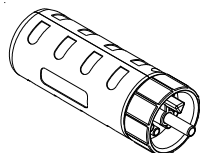
**Air Filter
AT-1000**



**Standard
Connection
Euro Connector**



**EASYFIT
Connection**



Replacement Parts

Torch parts

Item	Description	Code
1	● PTM-80 Machine Torch Head	09810
1a	● O-Ring	51620.60
1b	● Cooling Tube	09800.42
2	● Fiberglass Positioning Tube	07218
3	● Electrode, Back Striking	52558
4	● Swirl ring	60027
5	Tip, Cutting, ø 1.0, 40-50A, Back Striking	51311.10
	Tip, Cutting, ø 1.1, 50-60A, Back Striking	51311.11
	Tip, Cutting, ø 1.2, 60-70A, Back Striking	51311.12
	● Tip, Cutting, ø 1.3, 70-80A, Back Striking	51311.13
6	● Retaining Cap	60510
N/S	● Wrench for electrode	60368

Torches and Leads

PTM-80	180° Machine Torch, 6m (20 ft) Leads, Coaxial Cable	09831CX
PTM-80	180° Machine Torch, 12m (40 ft) Leads, Coaxial Cable	09836CX
PTM-80	180° Lead Assembly, 6m (20 ft) Length, Coaxial Cable	09791CX
PTM-80	180° Lead Assembly, 12m (40 ft) Length, Coaxial Cable	09796CX

Accessories

Item	Description	Code
7	Contact Tip, ø 1.0, 40-50A, Back Striking	51311S.10
	Contact Tip, ø 1.1, 50-60A, Back Striking	51311S.11
	Contact Tip, ø 1.2, 60-70A, Back Striking	51311S.12
	Contact Tip, ø 1.3, 70-80A, Back Striking	51311S.13
8	Shield Cup Body	60511
9	Shield Cap, Machine	60506
10	Fiberglass Positioning Tube with Rack	07219

**Torches with different cable covers
and connectors available on request.**

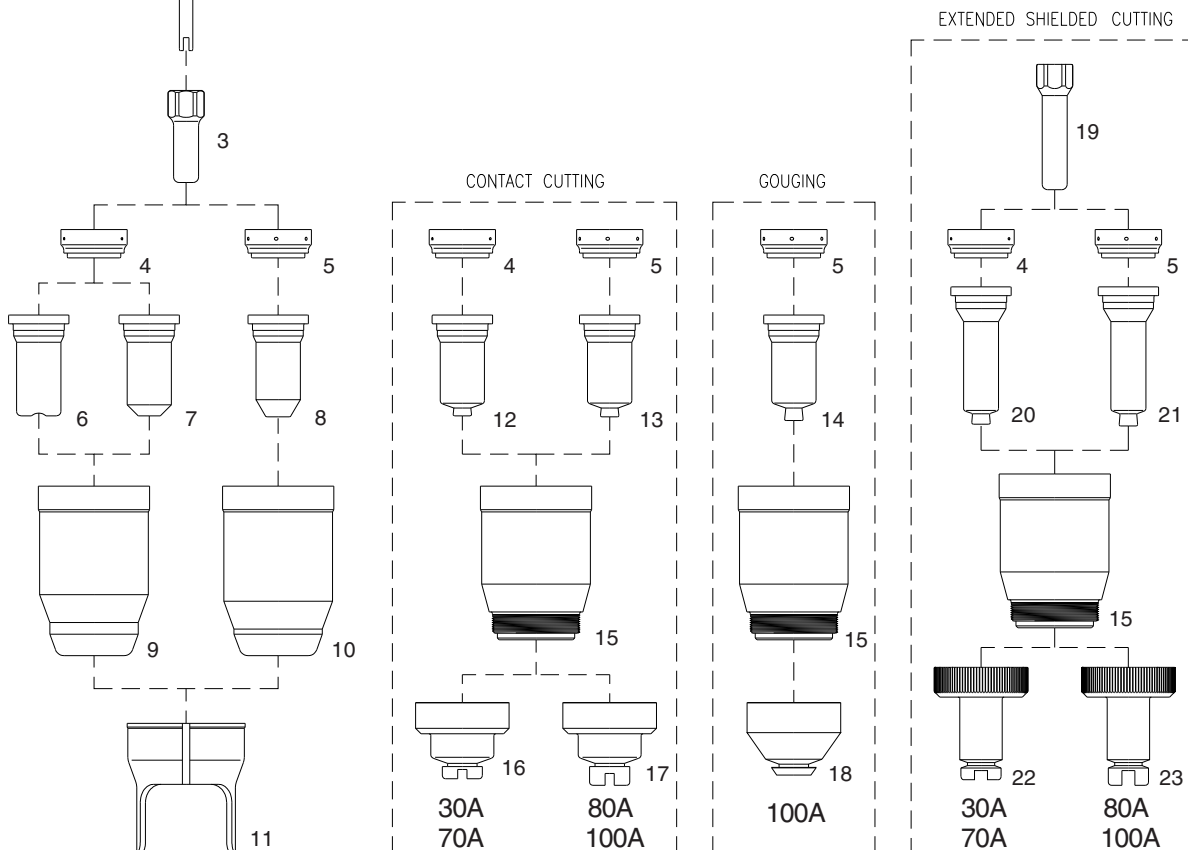
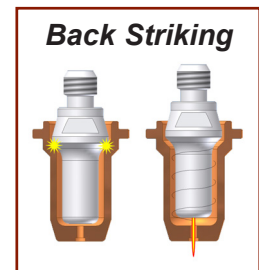
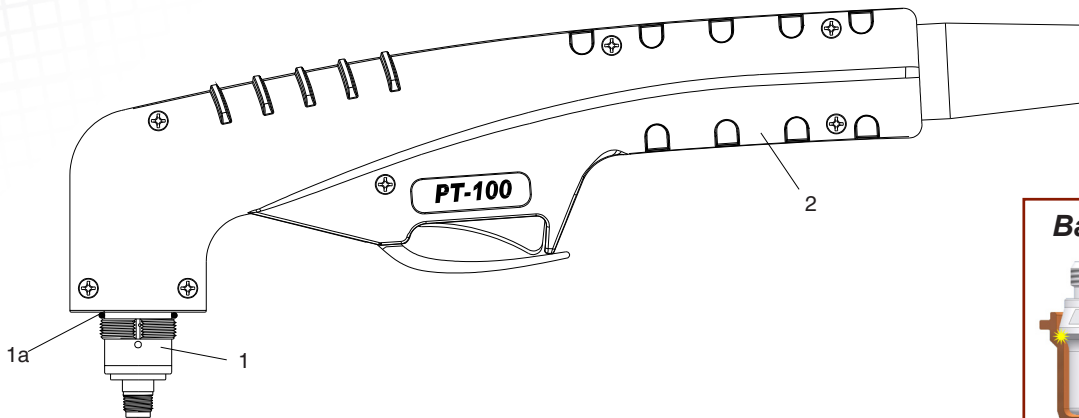


PT-100

Technical Data

Current : 30-100 Amps
Duty Cycle: 100 Amps 60%
Gas: Air/N₂
Gas Pressure: 70-80 psi (4.8-5.5 bar)
Gas Flow: 510 scfh (240 lpm)
Pilot : Electrode to Tip (18-22A)
Ignition: Without HF

For the correct operation please use:
 3-Ways Solenoid Valve, inside orifice
 3.5-4.0mm - (0.138-0.157 inches)



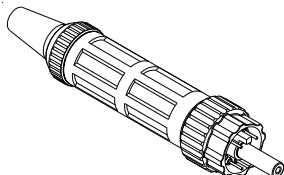
Air or N₂

● **Standard Layout**

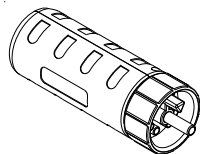
Air Filter
AT-1000



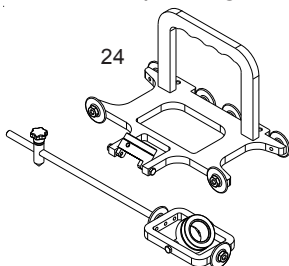
Standard
Connection
Euro Connector



EASYFIT
Connection



Bevel Tool
Patent pending



Replacement Parts

Torch parts

Item	Description	Code
1	● PT-100 Hand Torch Head	09700
1a	● O-Ring	51190.41
1b	● Cooling Tube	09700.48
2	● Handle with parts	09705
3	● Electrode, Back Striking	52556
4	Swirl ring, 30-70A	60025
5	● Swirl ring, 80-100A and Gouging	60026
6	Tip, Contact Cutting, \varnothing 0.9, 30-40A, Back Striking	51245.09
7	Tip, Cutting, \varnothing 1.0, 40-50A, Back Striking	51246.10
	Tip, Cutting, \varnothing 1.1, 50-60A, Back Striking	51246.11
	Tip, Cutting, \varnothing 1.2, 60-70A, Back Striking	51246.12
8	Tip, Cutting, \varnothing 1.4, 80-90A, Back Striking	51248.14
	● Tip, Cutting, \varnothing 1.5, 100A, Back Striking	51248.15
9	Retaining Cap, 30-70A	60500
10	● Retaining Cap, 80-100A	60501
11	● Double Pointed Spacer (for use with item. 7 and 8 only)	60444
N/S	● Wrench for electrode	60368

Torches and Leads

PT-100	Hand Torch, 6m (20 ft) Leads, Coaxial Cable	09721CX
PT-100	Hand Torch, 12m (40 ft) Leads, Coaxial Cable	09726CX
PT-100	Lead Assembly, Hand, 6m (20 ft) Length, Coaxial Cable	09781CX
PT-100	Lead Assembly, Hand, 12m (40 ft) Length, Coaxial Cable	09786CX

Accessories

Item	Description	Code
12	Contact Tip, \varnothing 1.0, 40-50A, Back Striking	51276.10
	Contact Tip, \varnothing 1.1, 50-60A, Back Striking	51276.11
	Contact Tip, \varnothing 1.2, 60-70A, Back Striking	51276.12
13	Contact Tip, \varnothing 1.4, 80-90A, Back Striking	51278.14
	Contact Tip, \varnothing 1.5, 100A, Back Striking	51278.15
14	Tip, Gouging, 100A, Back Striking	51278G.22
15	Shield Cup Body	60502
16	Shield Cap, Hand, 40-70A	60504
17	Shield Cap, Hand, 80-100A	60505
18	Shield Cap, Gouging	60508
19	Extended Electrode	52556L
20	Extended Shielded Tip, \varnothing 1.0, 40-50A,	51276L.10
	Extended Shielded Tip, \varnothing 1.1, 50-60A,	51276L.11
	Extended Shielded Tip, \varnothing 1.2, 60-70A,	51276L.12
21	Extended Shielded Tip, \varnothing 1.4, 80-90A,	51278L.14
	Extended Shielded Tip, \varnothing 1.5, 100A,	51278L.15
22	Extended Shielded Cap, Hand, 40-70A	60504L
23	Extended Shielded Cap, Hand, 80-100A	60505L
N/S	Circle Cutting Attachment	51864
24	BEVEL TOOL	51887

**Torches with different cable covers
and connectors available on request.**

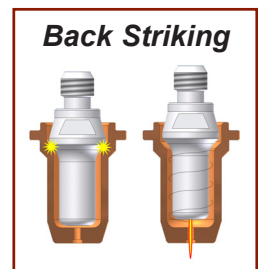
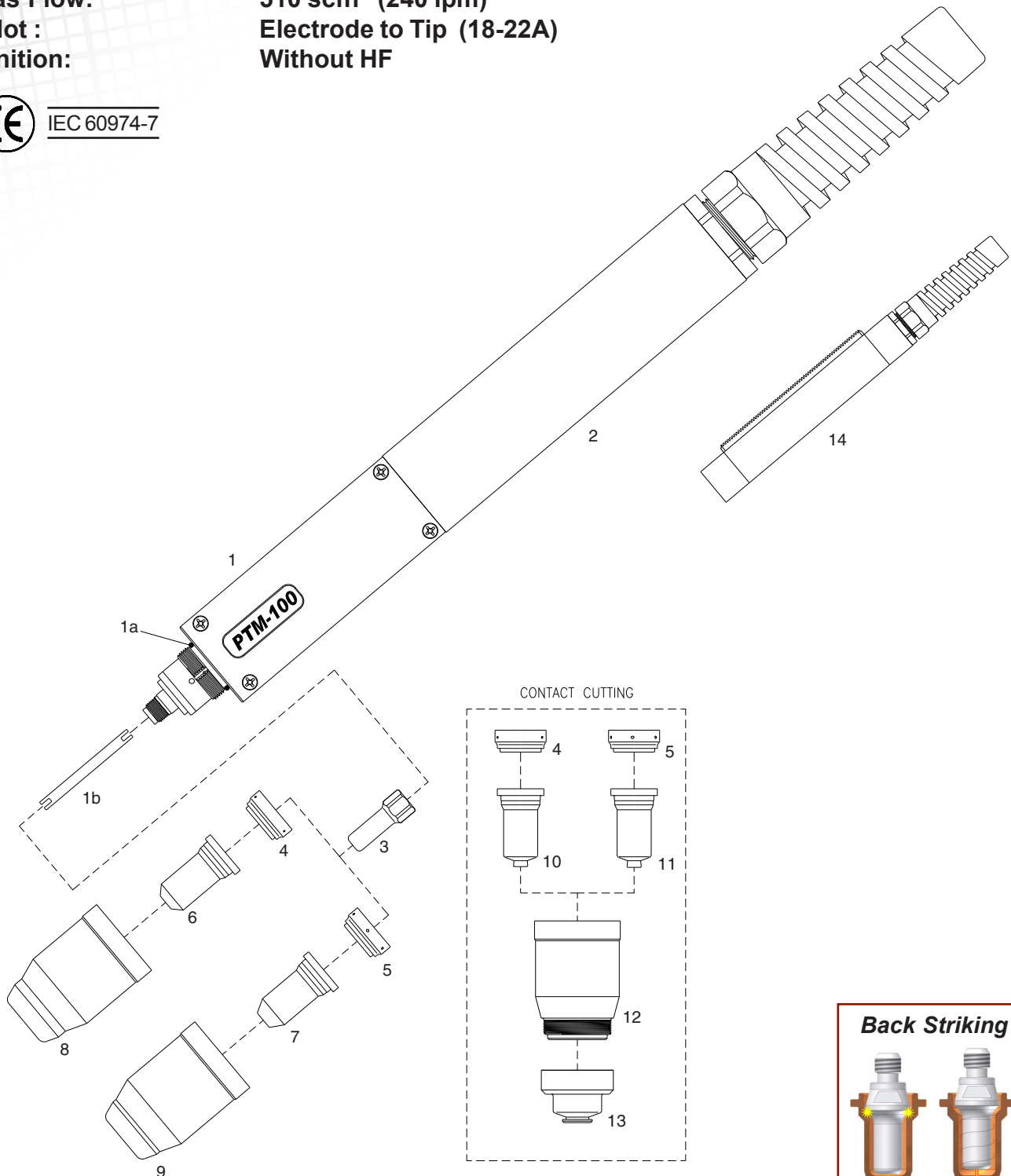


PTM-100

Technical Data

Current : 30-100 Amps
Duty Cycle: 100 Amps 60%
Gas: Air/N2
Gas Pressure: 70-80 psi (4.8-5.5 bar)
Gas Flow: 510 scfh (240 lpm)
Pilot : Electrode to Tip (18-22A)
Ignition: Without HF

For the correct operation please use:
 3-Ways Solenoid Valve, inside orifice
 3.5-4.0mm - (0.138-0.157 inches)





PTM-100

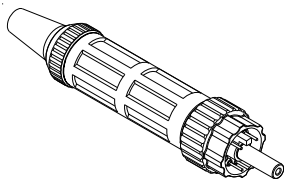
Air or N₂

● **Standard Layout**

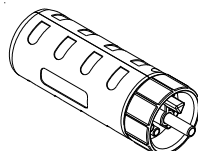
**Air Filter
AT-1000**



**Standard
Connection
Euro Connector**



**EASYFIT
Connection**



Replacement Parts

Torch parts

Item	Description	Code
1	● PTM-100 Machine Torch Head	09710
1a	● O-Ring	51190.41
1b	● Cooling Tube	09700.48
2	● Fiberglass Positioning Tube	07218
3	● Electrode, Back Striking	52556
4	Swirl ring, 30-70A	60025
5	● Swirl ring, 80-100A	60026
6	Tip, Cutting, ø 1.0, 40-50A, Back Striking	51246.10
	Tip, Cutting, ø 1.1, 50-60A, Back Striking	51246.11
	Tip, Cutting, ø 1.2, 60-70A, Back Striking	51246.12
7	Tip, Cutting, ø 1.4, 80-90A, Back Striking	51248.14
	● Tip, Cutting, ø 1.5, 100A, Back Striking	51248.15
8	Retaining Cap, 30-70A	60500
9	● Retaining Cap, 80-100A	60501
N/S	● Wrench for electrode	60368

Torches and Leads

PTM-100	180° Machine Torch, 6m (20 ft) Leads, Coaxial Cable	09731CX
PTM-100	180° Machine Torch, 12m (40 ft) Leads, Coaxial Cable	09736CX
PTM-100	180° Lead Assembly, 6m (20 ft) Length, Coaxial Cable	09791CX
PTM-100	180° Lead Assembly, 12m (40 ft) Length, Coaxial Cable	09796CX

Accessories

Item	Description	Code
10	Contact Tip, ø 1.0, 40-50A, Back Striking	51276.10
	Contact Tip, ø 1.1, 50-60A, Back Striking	51276.11
	Contact Tip, ø 1.2, 60-70A, Back Striking	51276.12
11	Contact Tip, ø 1.4, 80-90A, Back Striking	51278.14
	Contact Tip, ø 1.5, 100A, Back Striking	51278.15
12	Shield Cup Body	60502
13	Shield Cap, Machine	60506
14	Fiberglass Positioning Tube with Rack	07219

**Torches with different cable covers
and connectors available on request.**

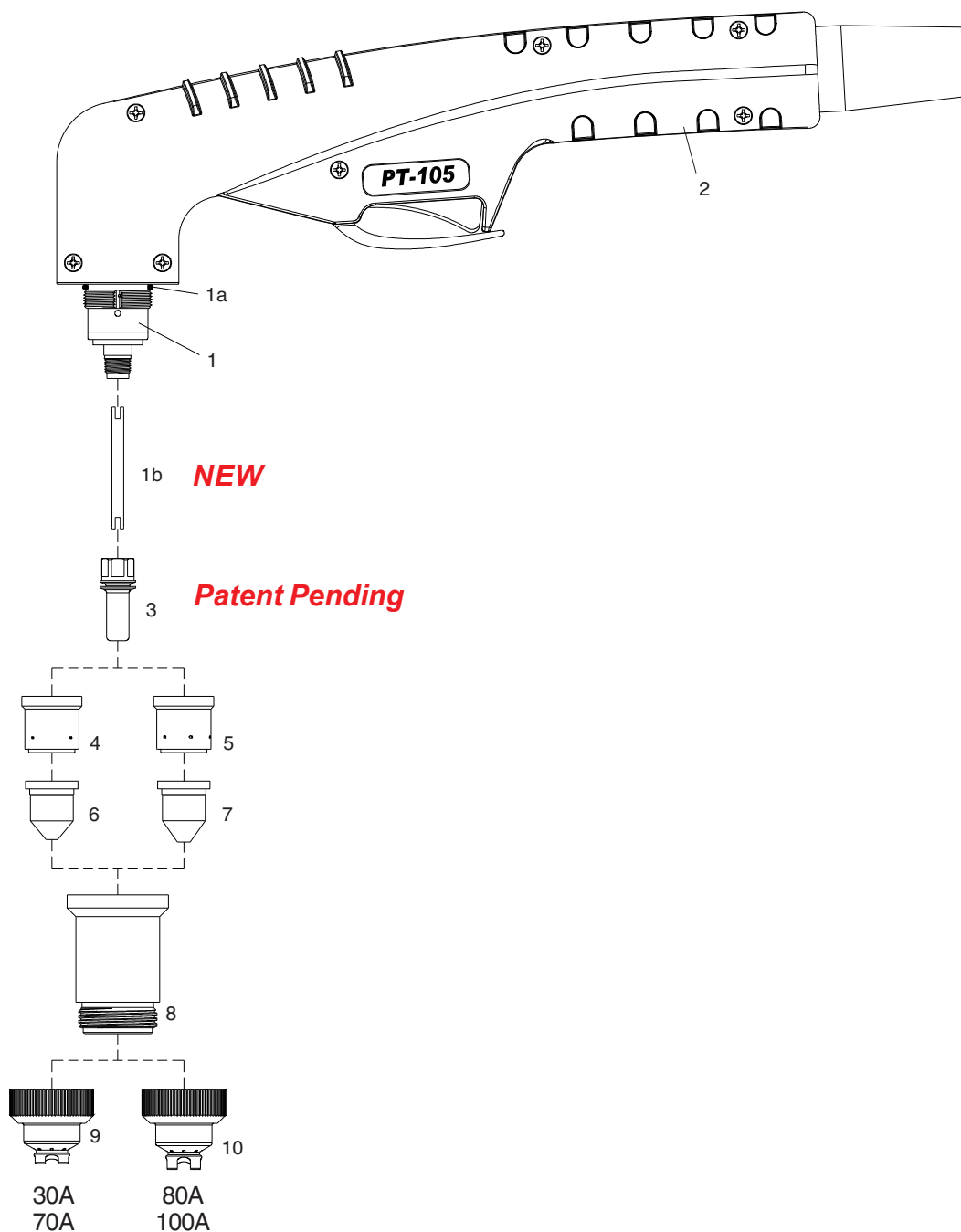


PT-105Plus

Replacement Parts

Current :	30-100 Amps
Duty Cycle:	100 Amps 60%
Gas:	Air/N2
Gas Pressure:	70-80 psi (4.8-5.5 bar)
Gas Flow:	510 scfh (420 lpm)
Pilot :	Electrode to Tip (18-22A)
Ignition:	Without HF

For the correct operation please use:
3-Ways Solenoid Valve, inside orifice
3.5-4.0mm - (0.138-0.157 inches)





PT-105Plus

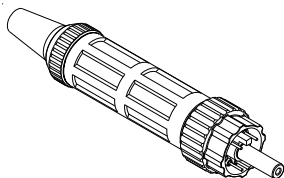
Air or N₂

● **Standard Layout**

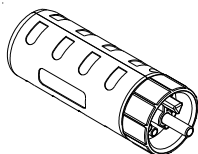
**Air Filter
AT-1000**



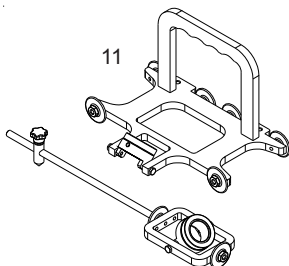
**Standard
Connection
Euro Connector**



**EASYFIT
Connection**



**Bevel Tool
Patent pending**



Replacement Parts

Torch parts

Item	Description	Code
1	● PT-105 Hand Torch Head	09700P
1a	● O-Ring	51190.41
1b	● Cooling Tube, NEW	09700.62
2	● Handle with parts	09705
3	● Electrode	52559
4	Swirl ring, 30-70A	60021
5	● Swirl ring, 80-100A	60022
6	Tip, Cutting, 40A	51257.09
	Tip, Cutting, 60A	51257.11
7	Tip, Cutting, 80A	51258.13
	● Tip, Cutting, 100A	51258.15
8	● Shield Cup Body	60499
9	Shield Cap, Hand, 30-70A	60514
10	● Shield Cap, Hand, 80-100A	60515
N/S	● Wrench for electrode	60368

Torches and Leads

PT-105	Hand Torch, 6m (20 ft) Leads, Coaxial Cable	09721PX
PT-105	Hand Torch, 12m (40 ft) Leads, Coaxial Cable	09726PX
PT-105	Lead Assembly, Hand, 6m (20 ft) Length, Coaxial Cable	09781CX
PT-105	Lead Assembly, Hand, 12m (40 ft) Length, Coaxial Cable	09786CX

Accessories

N/S	Circle Cutting Attachment	51865
11	BEVEL TOOL	51880

**Torches with different cable covers
and connectors available on request.**

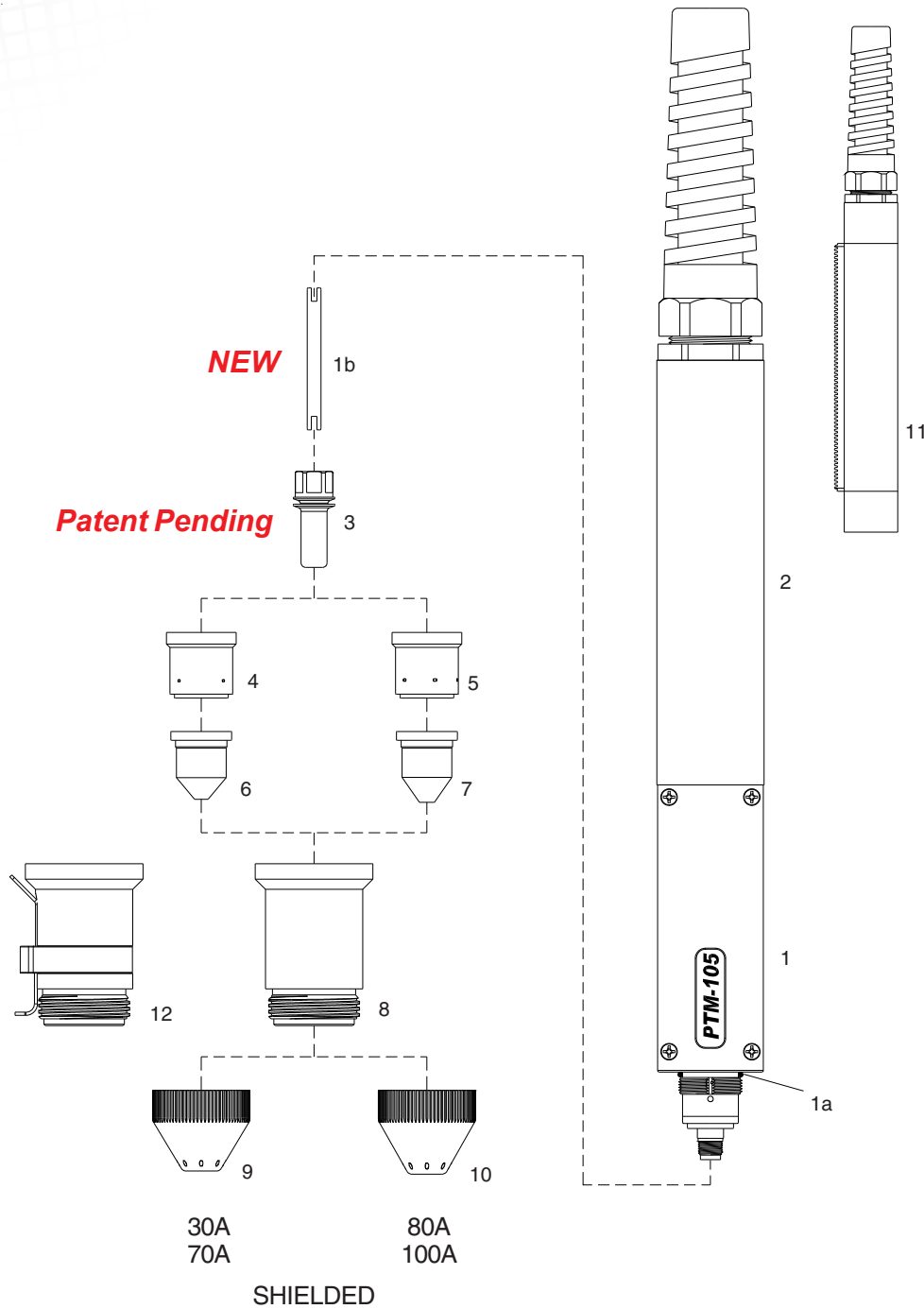


PTM-105Plus

Replacement Parts

Current : 30-100 Amps
Duty Cycle: 100 Amps 60%
Gas: Air/N₂
Gas Pressure: 70-80 psi (4.8-5.5 bar)
Gas Flow: 510 scfh (240 lpm)
Pilot : Electrode to Tip (18-22A)
Ignition: Without HF

For the correct operation please use:
 3-Ways Solenoid Valve, inside orifice
 3.5-4.0mm - (0.138-0.157 inches)





PTM-105Plus

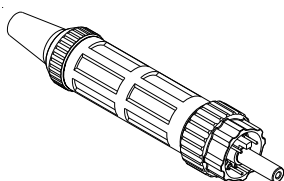
Air or N₂

● **Standard Layout**

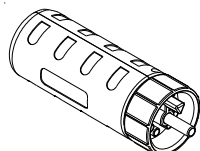
**Air Filter
AT-1000**



**Standard
Connection
Euro Connector**



**EASYFIT
Connection**



Replacement Parts

Torch parts

Item	Description	Code
1	● PTM-105 Machine Torch Head	09710P
1a	● O-Ring	51190.41
1b	● Cooling Tube, NEW	09700.62
2	● Fiberglass Positioning Tube	07218
3	● Electrode	52559
4	Swirl ring, 30-70A	60021
5	● Swirl ring, 80-100A	60022
6	Tip, Cutting, 40A	51257.09
	Tip, Cutting, 60A	51257.11
7	Tip, Cutting, 80A	51258.13
	● Tip, Cutting, 100A	51258.15
8	● Shield Cup Body	60499
9	Shield Cap, Machine, 30-70A	60516
10	● Shield Cap, Machine, 80-100A	60517
N/S	● Wrench for electrode	60368

Torches and Leads

PTM-105	180° Machine Torch, 6m (20 ft) Leads, Coaxial Cable	09731PX
PTM-105	180° Machine Torch, 12m (40 ft) Leads, Coaxial Cable	09736PX
PTM-105	180° Lead Assembly, 6m (20 ft) Length, Coaxial Cable	09791CX
PTM-105	180° Lead Assembly, 12m (40 ft) Length, Coaxial Cable	09796CX

Accessories

11	Fiberglass Positioning Tube With Rack	07219
12	Shield Cup Body, OHMIC	60499H

**Torches with different cable covers
and connectors available on request.**

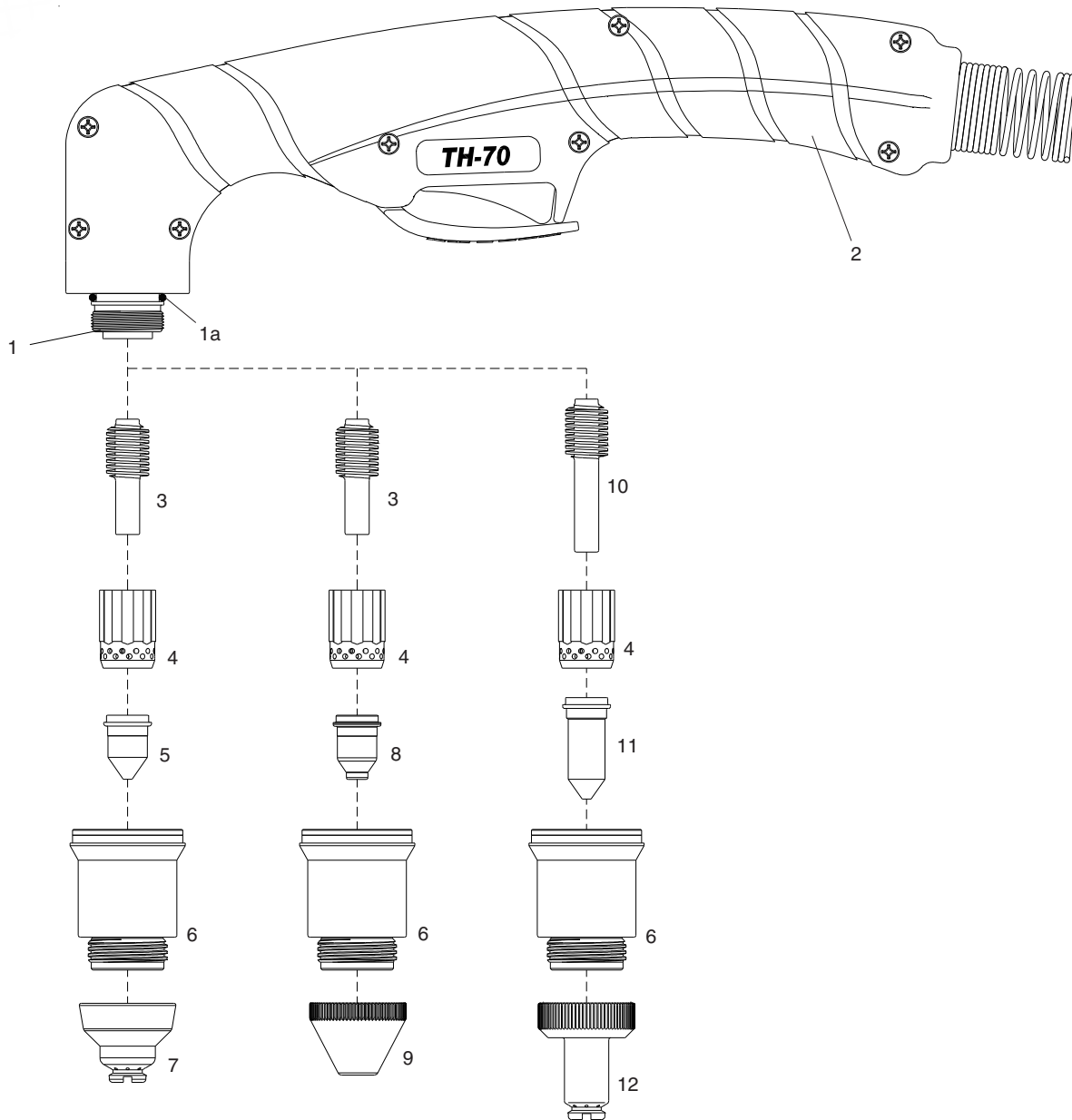
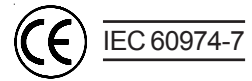


TH-70

Replacement Parts

Current : 20-70 Amps
Duty Cycle: 70 Amps 50%
Gas: Air/N2
Gas Pressure
 - Cutting: 72-80 PSI (5.0-5.5 bar)
 - Gouging: 58-65 PSI (4.0-4.5 bar)
Gas Flow at 70A: 390 scfh (185 lpm)
Pilot : Electrode to Tip
Ignition: Without HF

For the correct operation please use:
 3-Ways Solenoid Valve, inside orifice
 3.5-4.0mm - (0.138-0.157 inches)





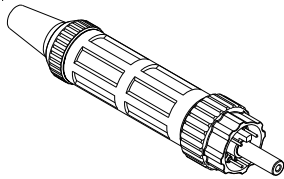
TH-70

Air or N₂

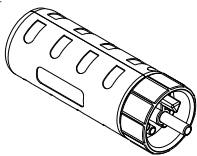
**Air Filter
AT-1000**



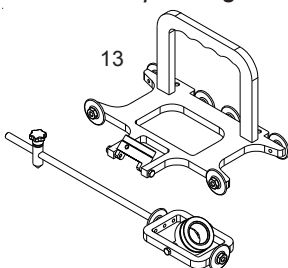
**Standard
Connection
Euro Connector**



**EASYFIT
Connection**



**Bevel Tool
Patent pending**



Replacement Parts

Torch parts

Item	Description	Code
1	● TH-70 Hand Torch Head	03600
1a	● O-Ring	07300.60
2	● Handle with parts	03606
3	● Electrode	52574
4	Swirl ring	60041E
	● Swirl ring Maximum Life	60041
5	Tip, Contact Cutting, 20-50A	51206
	● Tip, Contact Cutting, 70A	51206.11
6	● Shield Cup Body	60305T
7	● Shield Cap, Hand	51923
8	Tip, Gouging, 45A	51206G
	Tip, Gouging, 70A	51206G.10
9	Shield Cap, Gouging	51924G
10	Extended Electrode	52574L
11	Extended Shielded Tip, Contact Cutting, 20-50A	51206L
	Extended Shielded Tip, Contact Cutting, 70A	51206L.11
12	Extended Shield Cap, Hand	51923L

Torches and Leads

TH-70 Hand Torch, 6m (20ft) Leads, Coaxial Cable	03621CX
TH-70 Hand Torch, 12m (40ft) Leads, Coaxial Cable	03626CX
TH-70 Lead Assembly, Hand, 6m (20 ft) Length, Coaxial Cable	03681CX
TH-70 Lead Assembly, Hand, 12m (40 ft) Length, Coaxial Cable	03686CX

Accessories

Item	Description	Code
N/S	Circle Cutting Attachment	51865
13	BEVEL TOOL	51880

Torches with different connectors available on request.

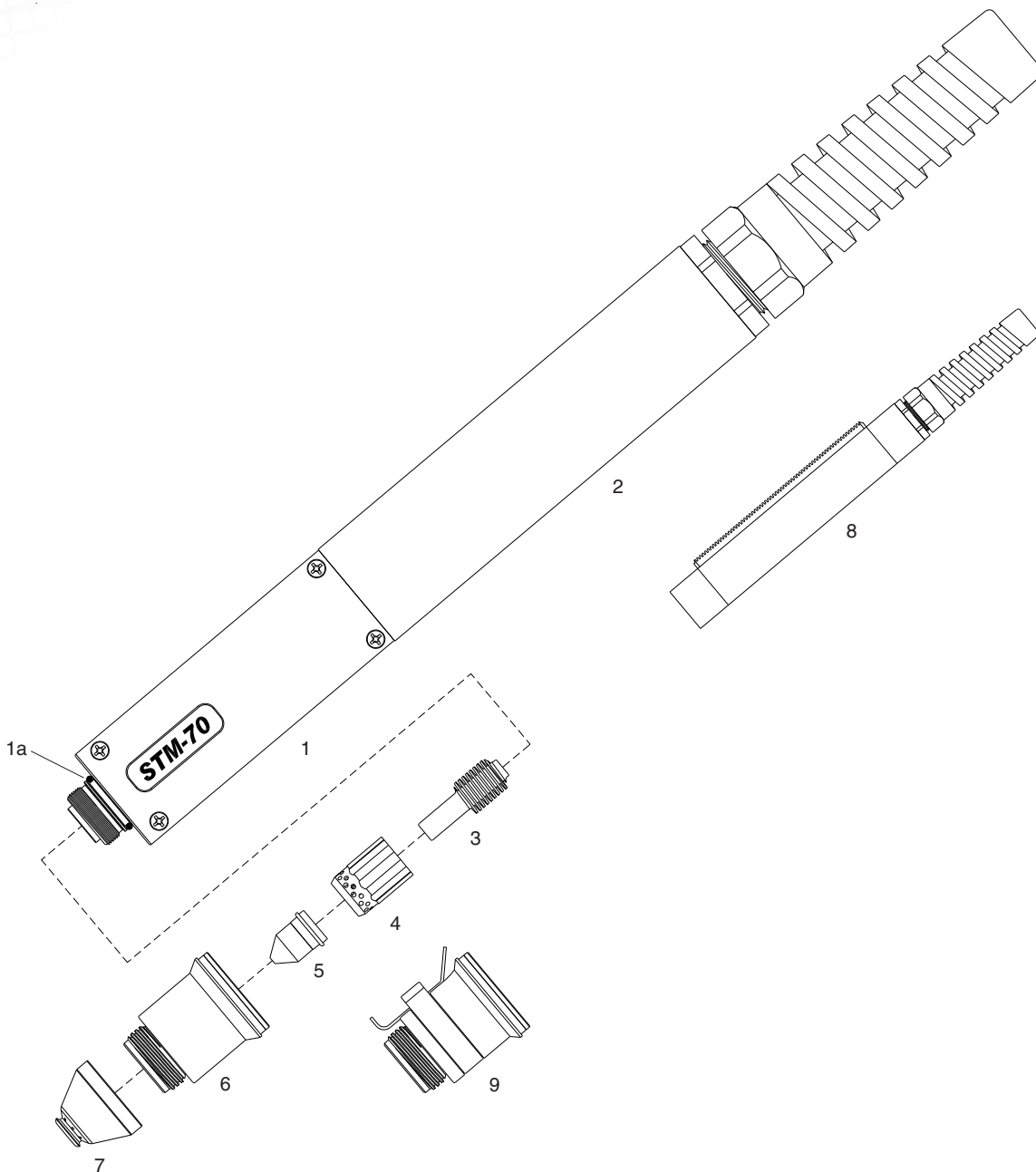


TM-70

Replacement Parts

Current :	20-70 Amps
Duty Cycle:	70 Amps 50%
Gas:	Air/N2
Gas Pressure	
- Cutting:	72-80 PSI (5.0-5.5 bar)
- Gouging:	58-65 PSI (4.0-4.5 bar)
Gas Flow at 70A:	390 scfh (185 lpm)
Pilot :	Electrode to Tip
Ignition:	Without HF

For the correct operation please use:
 3-Ways Solenoid Valve, inside orifice
 3.5-4.0mm - (0.138-0.157 inches)





TM-70

Air or N₂

Replacement Parts

Torch parts

Item	Description	Code
1	● TM-70 MachineTorch Head	03610
1a	● O-Ring	07300.60
2	● Fiberglass Positioning Tube	07218
3	● Electrode	52574
4	Swirl ring	60041E
	● Swirl ring Maximum Life	60041
5	Tip, Contact Cutting, 20-50A	51206
	● Tip, Contact Cutting, 70A	51206.11
6	● Shield Cup Body	60305T
7	● Shield Cap, Machine	51924

**Air Filter
AT-1000**



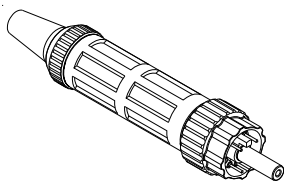
Torches and Leads

TM-70 Machine Torch, 6m (20ft) Leads, Coaxial Cable	03631CX
TM-70 Machine Torch, 12m (40ft) Leads, Coaxial Cable	03636CX
TM-70 Lead Assembly, Machine, 6m (20 ft) Length, Coaxial Cable	03691CX
TM-70 Lead Assembly, Machine, 12m (40 ft) Length, Coaxial Cable	03696CX

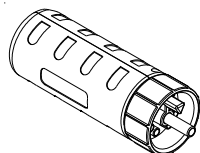
Accessories

8	Fiberglass Positioning Tube With Rack	07219
9	Shield Cup Body OHMIC	60305TH

**Standard
Connection
Euro Connector**



**EASYFIT
Connection**



Torches with different connectors available on request.

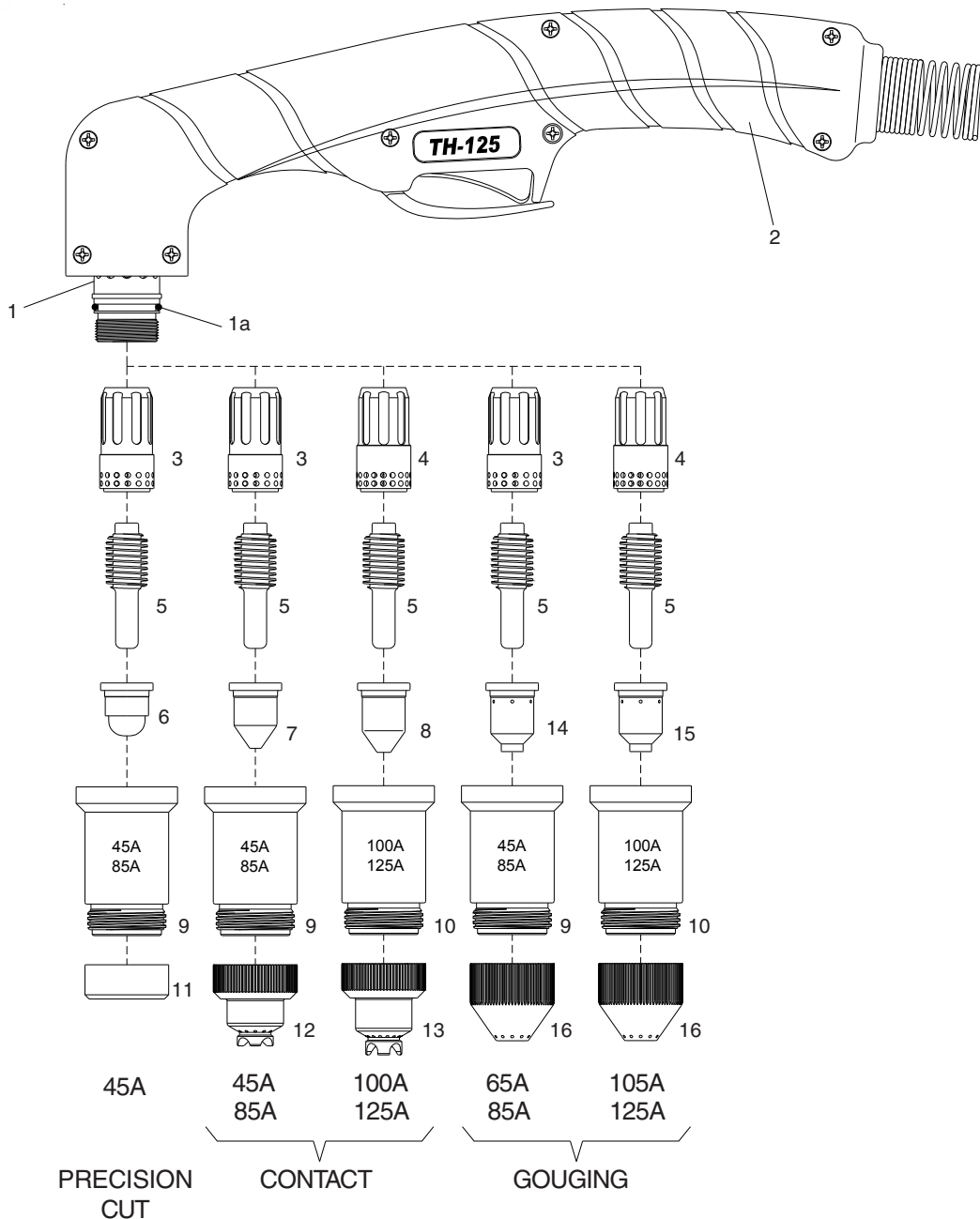


TH-125

Replacement Parts

Current : 40-125 Amps
Duty Cycle: 125 Amps at 60%
Gas: Air/N₂
Gas Pressure
 - Cutting: 72-87 PSI (5.0-6.0 bar)
 - Gouging: 58-65 PSI (4.0-4.5 bar)
Gas Flow at 125A: 630 SCFH (295 lpm)
Pilot : Electrode to Tip (15-18A)
Ignition: Without HF

For the correct operation please use:
 3-Ways Solenoid Valve, inside orifice
 4.5-5.5mm - (0.178-0.217 inches)





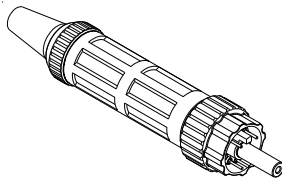
TH-125

Air or N₂

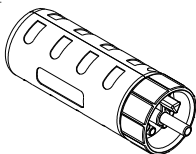
**Air Filter
AT-1000**



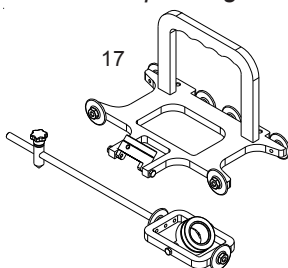
**Standard
Connection
Euro Connector**



**EASYFIT
Connection**



**Bevel Tool
Patent pending**



Replacement Parts

Torch parts

Item	Description	Code
1	● TH-125 Hand Torch Head	03700
1a	● O-Ring	03700.60
2	● Handle with parts	03705
3	Swirl ring, 45-85A	60042E
	Swirl ring, 45-85A Maximum Life	60042
4	Swirl ring, 100-125A	60040E
	● Swirl ring, 100-125A Maximum Life	60040
5	● Electrode, 45-125A	52677
	Electrode, 45-125A, BiMetal	52677BM
6	Tip, Cutting, 45A Precision Cut	51415
7	Tip, Cutting, 45A	51416
	Tip, Cutting, 65A	51417
	Tip, Cutting, 85A	51418
8	Tip, Cutting, 105A	51419
	● Tip, Cutting, 125A	51419.16
9	Shield Cup Body, 45-85A	60309TA
10	● Shield Cup Body, 100-125A	60309TC
11	Deflector, 45A Precision Cut	51928
12	Shield Cap, Hand, 45-85A	51921
13	● Shield Cap, Hand, 100-125A	51926
14	Tip, Gouging, 65-85A	51417G
15	Tip, Gouging, 105A	51418G
	Tip, Gouging, 125A	51419G
16	Shield Cap, Gouging	51927G

Torches and Leads

TH-125	Hand Torch, 6m (20 ft) Leads, Coaxial Cable	03721CX
TH-125	Hand Torch, 12m (40 ft) Leads, Coaxial Cable	03726CX
TH-125	Lead Assembly, Hand, 6m (20 ft) Length, Coaxial Cable	03781CX
TH-125	Lead Assembly, Hand, 12m (40 ft) Length, Coaxial Cable	03786CX

Accessories

N/S	Circle Cutting Attachment	51865
17	BEVEL TOOL	51880

Torches with different connectors available on request.

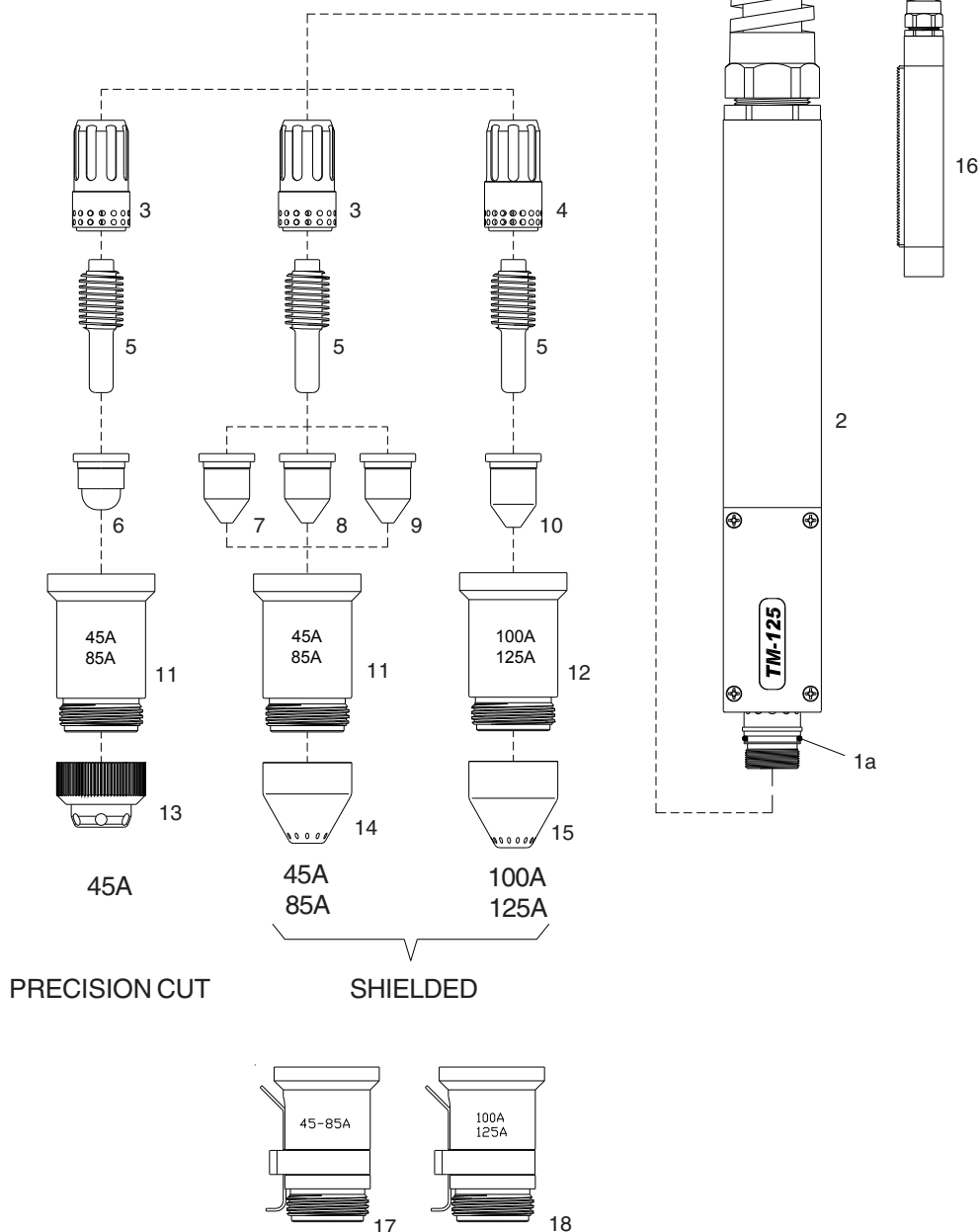


TM-125

Replacement Parts

Current : 20-70 Amps
Duty Cycle: 70 Amps 50%
Gas: Air/N₂
Gas Pressure
 - Cutting: 72-80 PSI (5.0-5.5 bar)
 - Gouging: 58-65 PSI (4.0-4.5 bar)
Gas Flow at 70A: 390 scfh (185 lpm)
Pilot : Electrode to Tip
Ignition: Without HF

For the correct operation please use:
 3-Ways Solenoid Valve, inside orifice
 4.5-5.5mm - (0.178-0.217 inches)





TM-125

Air or N₂

Replacement Parts

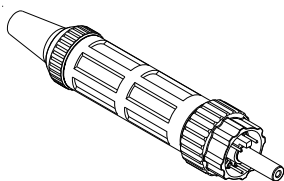
Torch parts

Item	Description	Code
1	● TM-125 Machine Torch Head	03710
1a	● O-Ring	03700.60
2	● Fiberglass Positioning Tube	07218
3	Swirl ring, 45-85A	60042E
	Swirl ring, 45-85A Maximum Life	60042
4	Swirl ring, 100-125A	60040E
	● Swirl ring, 100-125A Maximum Life	60040
5	● Electrode, 45-125A	52677
	Electrode, 45-125A, BiMetal	52677BM
6	Tip, Cutting, 45A Precision Cut	51415
7	Tip, Cutting, 45A	51416
8	Tip, Cutting, 65A	51417
9	Tip, Cutting, 85A	51418
10	Tip, Cutting, 105A	51419
	● Tip, Cutting, 125A	51419.16
11	Shield Cup Body, 45-85A	60309TA
12	● Shield Cup Body, 100-125A	60309TC
13	Shield Cap, 45A Precision Cut	51929
14	Shield Cap, Machine, 45-85A	51922
15	● Shield Cap, Machine, 100-125A	51927

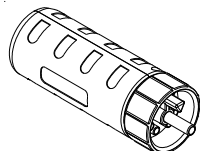
**Air Filter
AT-1000**



**Standard
Connection
Euro Connector**



**EASYFIT
Connection**



Torches and Leads

TM-125 Machine Torch, 6m (20 ft) Leads, Coaxial Cable	03731CX
TM-125 Machine Torch, 12m (40 ft) Leads, Coaxial Cable	03736CX
TM-125 Lead Assembly, Machine, 6m (20 ft) Length, Coaxial Cable	03791CX
TM-125 Lead Assembly, Machine, 12m (40 ft) Length, Coaxial Cable	03796CX

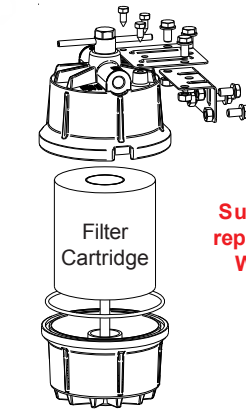
Accessories

16	Fiberglass Positioning Tube With Rack	07219
17	Shield Cup Body, 45-85A OHMIC	60309THA
18	Shield Cup Body, 100-125A OHMIC	60309THC

Torches with different connectors available on request.



AIR FILTER AT1000



Suggested replacement: WEEKLY

Air Filter Complete Code: 50500

Packaging:

Air Filter AT1000
 Code: 50500-12
 Carton Box: 12 Filters
 Dimensions: 11" x 16.5" x h. 17.3"
 (cm 28 x 42 x h. 44)
 Weight: 43 lbs (19.5 kg)

Filter Cartridge

Code: 50505-8
 Carton Box: 8 Cartridges
 Dimensions: 8.58" x 8.58" x h. 9.61"
 (cm 21.8 x 21.8 x h. 24.4)
 Weight: 4.2 lbs (1.9 kg)

Code: 50505-48

Master Box: 8x6=48 Cartridges
 Dimensions: 17.72" x 26.38" x h. 10.43"
 (cm 45 x 67 x h. 26.5)
 Weight: 26.7 lbs (12.1 kg)

"AT 1000" is the perfect solution to the problems created by the contamination of the compressed air used in many plasma cutting systems.

It eliminates "sputter" caused by moisture and oil from compressed air lines.

It extends the electrode and nozzle life, with obvious benefits to the cut quality.

Designed to remove aerosol oil and moisture, "AT 1000" is a real benefit, entrapping particles as small as .01 microns inches.

With "AT 1000" torches last longer. Without this filter, at the end of this cutting session, inside the torch and torch head you have left condensed moisture, that can cause a short-circuit, with consequent rise of costs coming from the replacement of the torch head and the needed time to realize this operation.

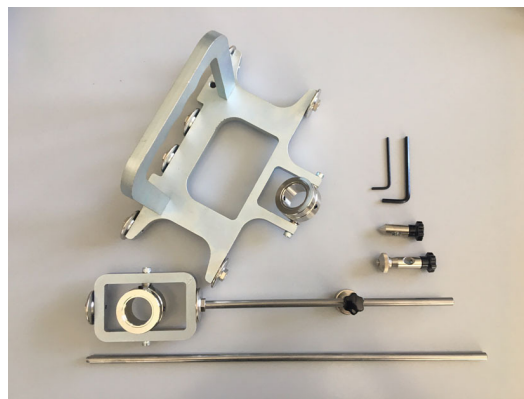
"AT 1000" can filter up to 1250 liters a minute without reduction in pressure.

It's recommended to replace the filter cartridge every 5 to 7 days (max).

It's also very suitable for painters and use of pneumatic tools.

Our excellent knowhow in the production of plasma cutting torches and the consequent problems of air contaminant brought us to create the "AT 1000" being very effective and important for users of plasma cutting systems.

BEVEL TOOL



Code	Description
51880	PMAX1000/1250/1650® - PMAX45/65/85/105® - TEC.MO.® PT40, PT60, PT80, PT105Plus, TH70, TH125, PH70, PH125.
51886	PMAX 125® - TEC.MO.® TH160 - PH160
51887	TEC.MO.® PT-100



CNC Plasma Water Table

Ask for more specific information



- Eliminates the need for the suction hood
- Preserve the cutting table technical and mobile parts from rust corrosion
- Solves the problem of rust in the finished piece
- Catches 98 % of fumes and dust
- Absorbs the majority of sparks

BIOLOGICUT Water Table fluid



Code	Description
50005	BIOLOGICUT WATER TABLE FLUID (5 LT.) / 1 BOX X 4 PIECES / DIMENSIONS: 44x30xH30 (Kg. 20)

TEC.MO.
=

Quality
Technology
Innovation