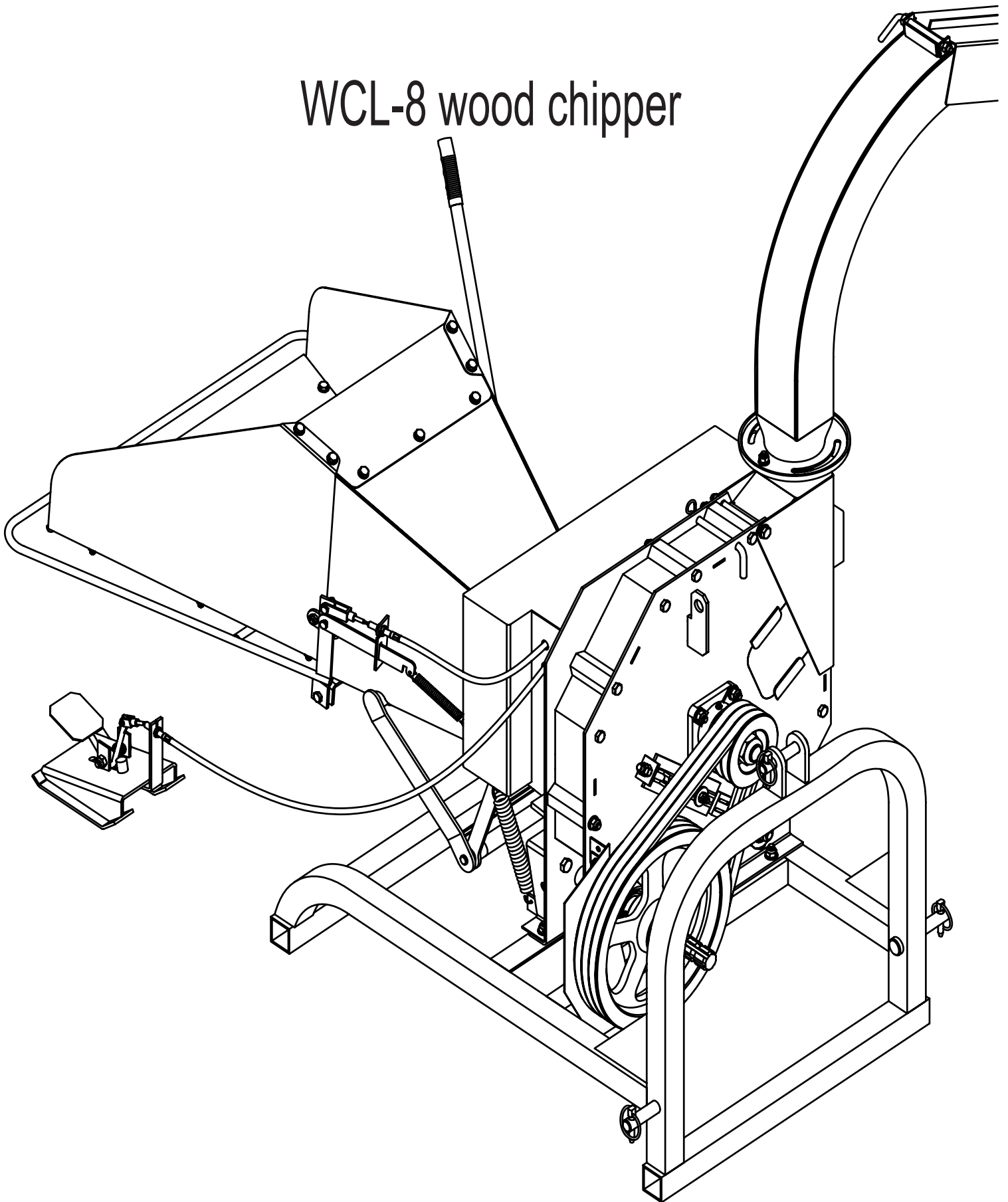
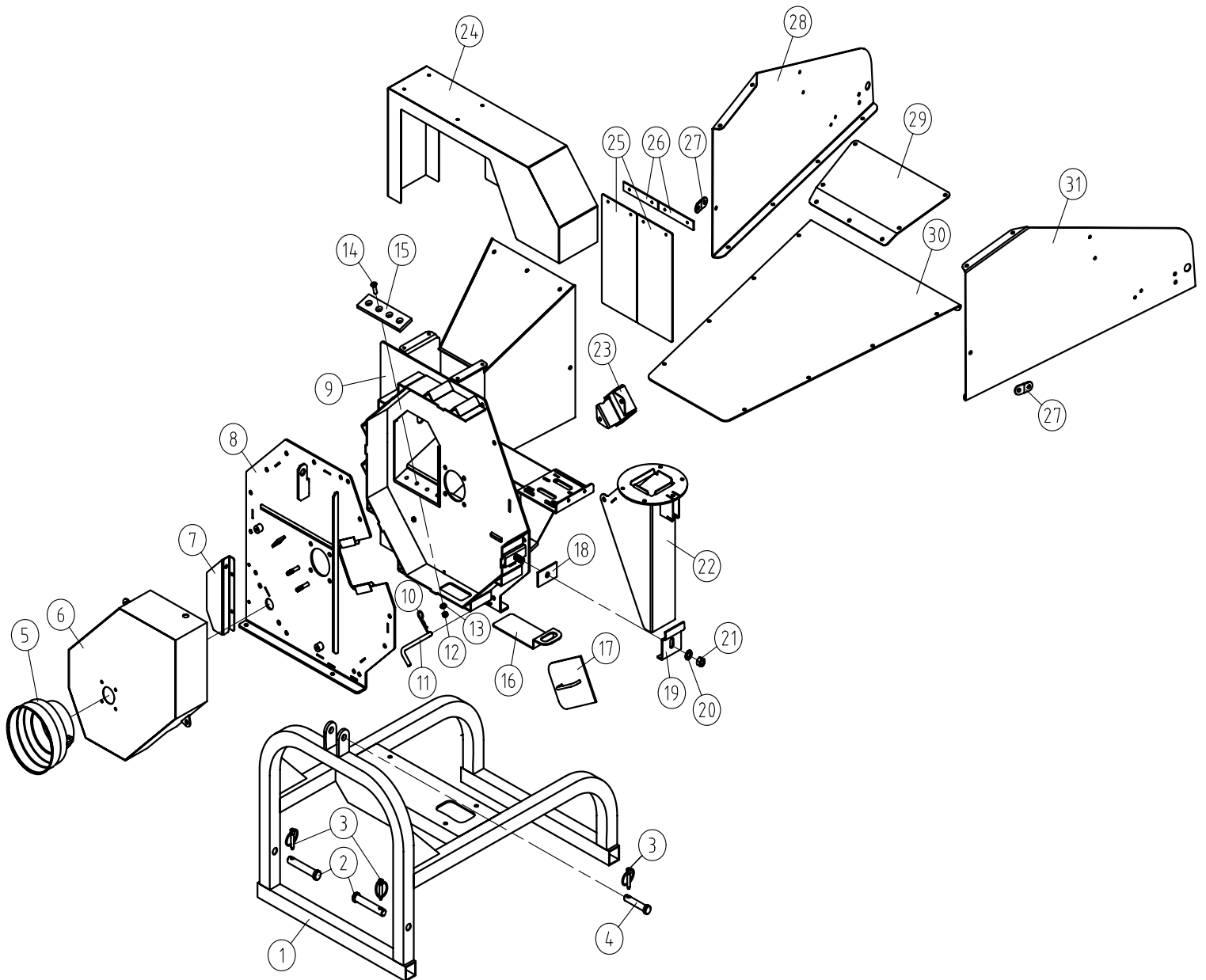


Parts Diagram

WCL-8 wood chipper

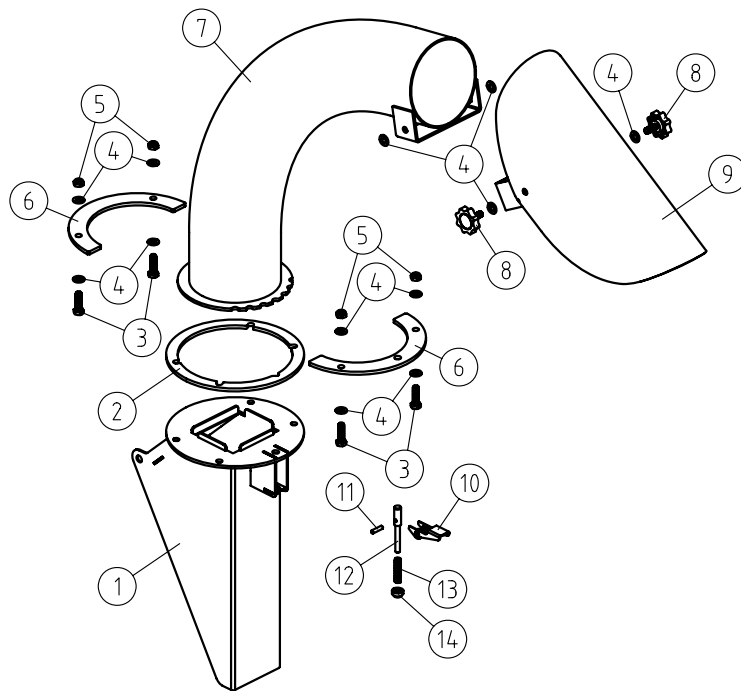


WCL-8 wood chipper assembly

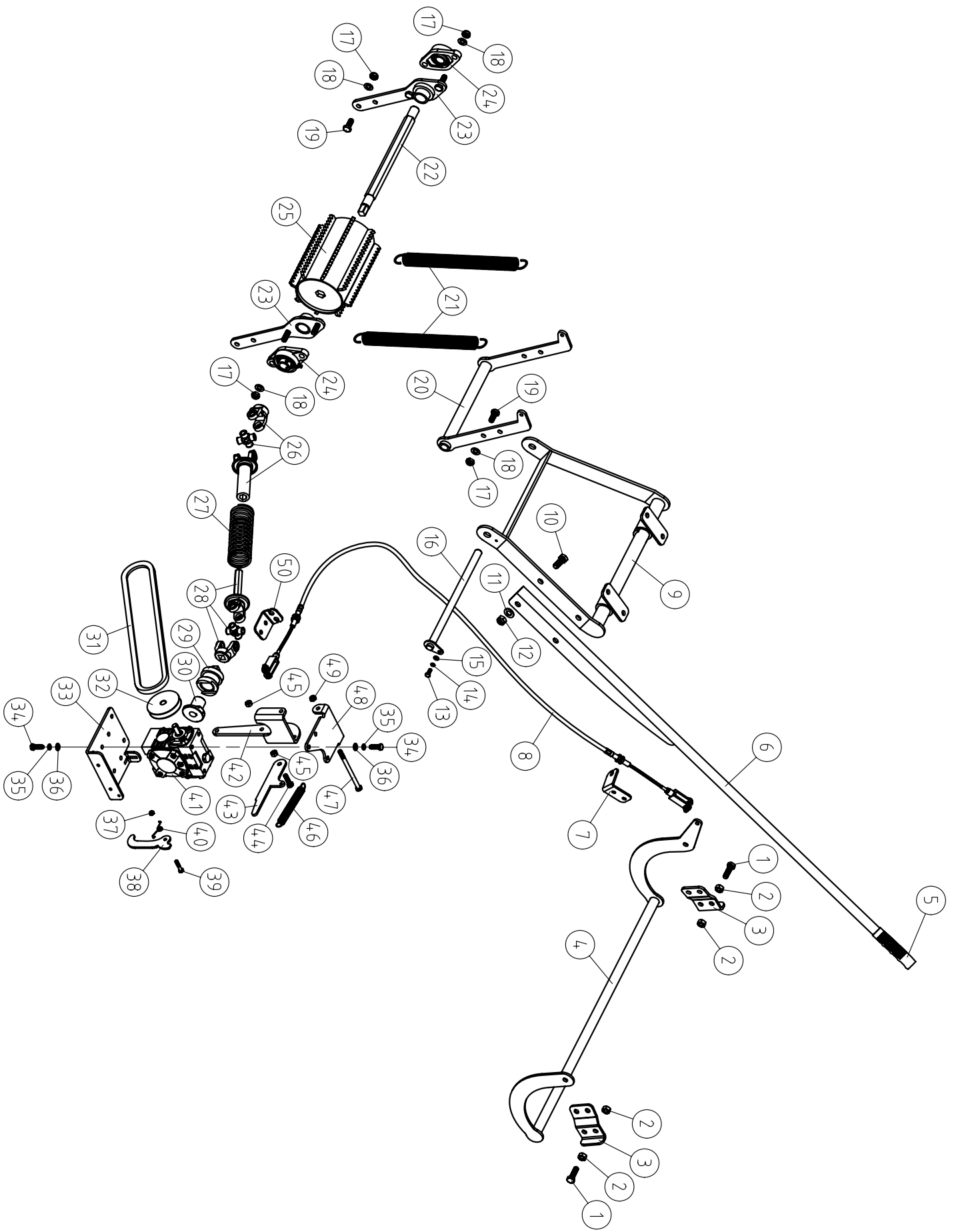


NO.	PART NO.	PARTS DESCRIPTION
1	WCM8-00011	CHIPPER SEAT WELDMENT
2	WCL5-00101	PIN FOR UP-LINK
3	200.56.011	PIN & LOCKING PIN
4	EF100.00.019	PIN FOR UP-LINK
5	FM120.00.401	PTO GUARD
6	WCM8-03011	GUARD OF BELT PULLEY
7	WCM8-00163	BAFFLE BOARD
8	WCM8-00017	SUPPORT
9	WCM8-02001	COVER ASSEMBLY
10		SMALL R PIN
11	WCL5-00133	LOCK PIN
12	GB6184-86	NUT M10
13	GB97.1-85	PLAIN WASHER M10*30
14	GB70.3-2000	BOLT M10*30
15	WCM8-02101	BLADE
16	WCM8-00188	COVER
17	WCM8-00033	COVER BOARD
18	WCL5-00105	RUBBER WASHER
19	WCM8-00104	COMPACT BOARD
20	GB97.1-85	PLAIN WASHER 16
21	GB6170-86	NUT M16
22	WCM8-00015	DISCHARGE PIPE
23	WCM8-00166	DOWN COVER BOARD
24	WCM8-00013	GEAR BOX COVER
25	WCL8-00110	PLASTIC BAFFLE BOARD
26	WCL8-00111	COMPACT BOARD
27	24PMF.01.117	SUPPORT BOARD FOR BUCKET
28	WCM8-00117	RIGHT CHARGIN GBOARD
29	WCM8-00119	UPPER CHARGIN GBOARD
30	WCM8-00116	DOWN CHARGIN GBOARD
31	WCM8-00118	LEFT CHARGING BOARD

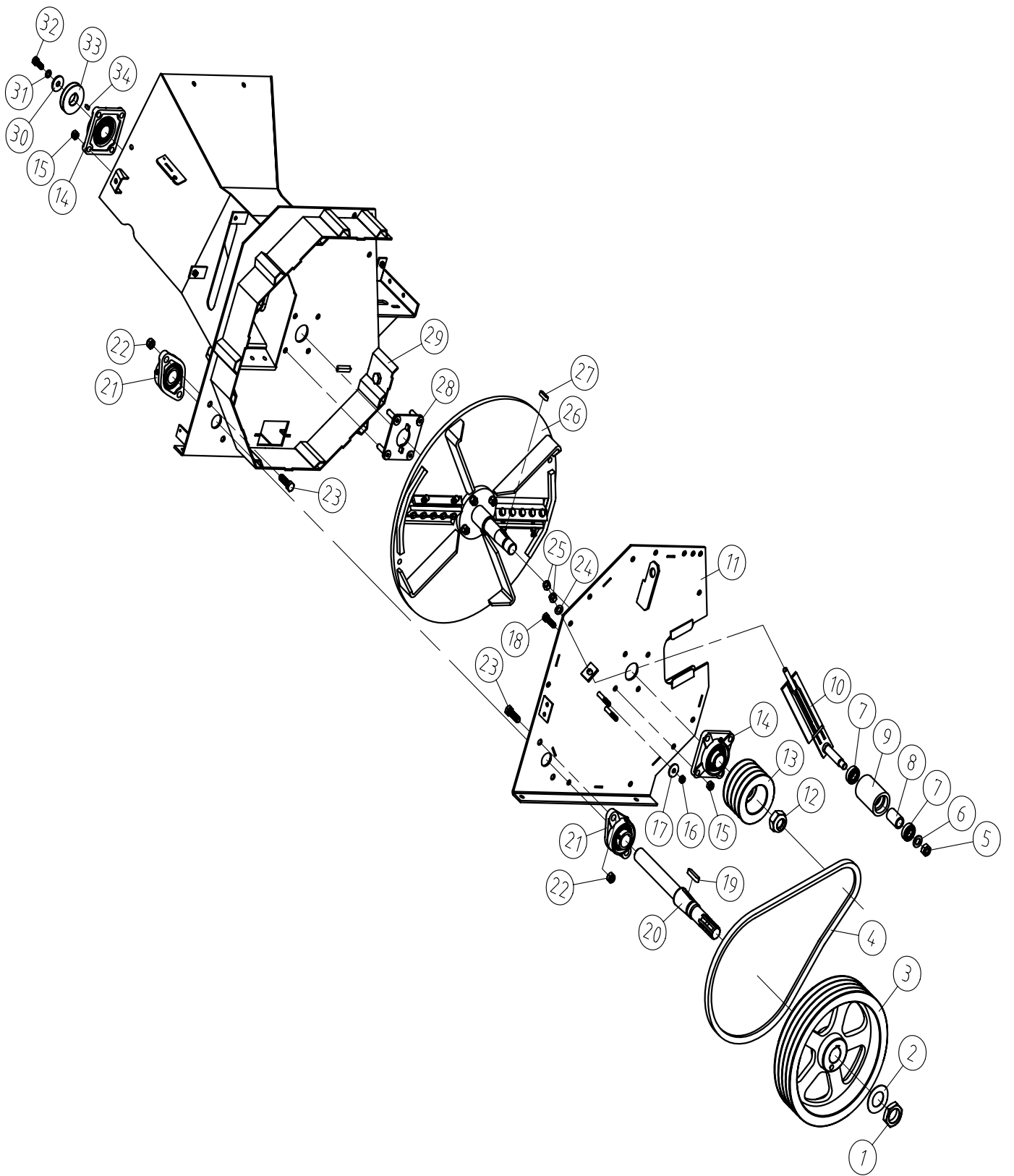
chipper chute connection



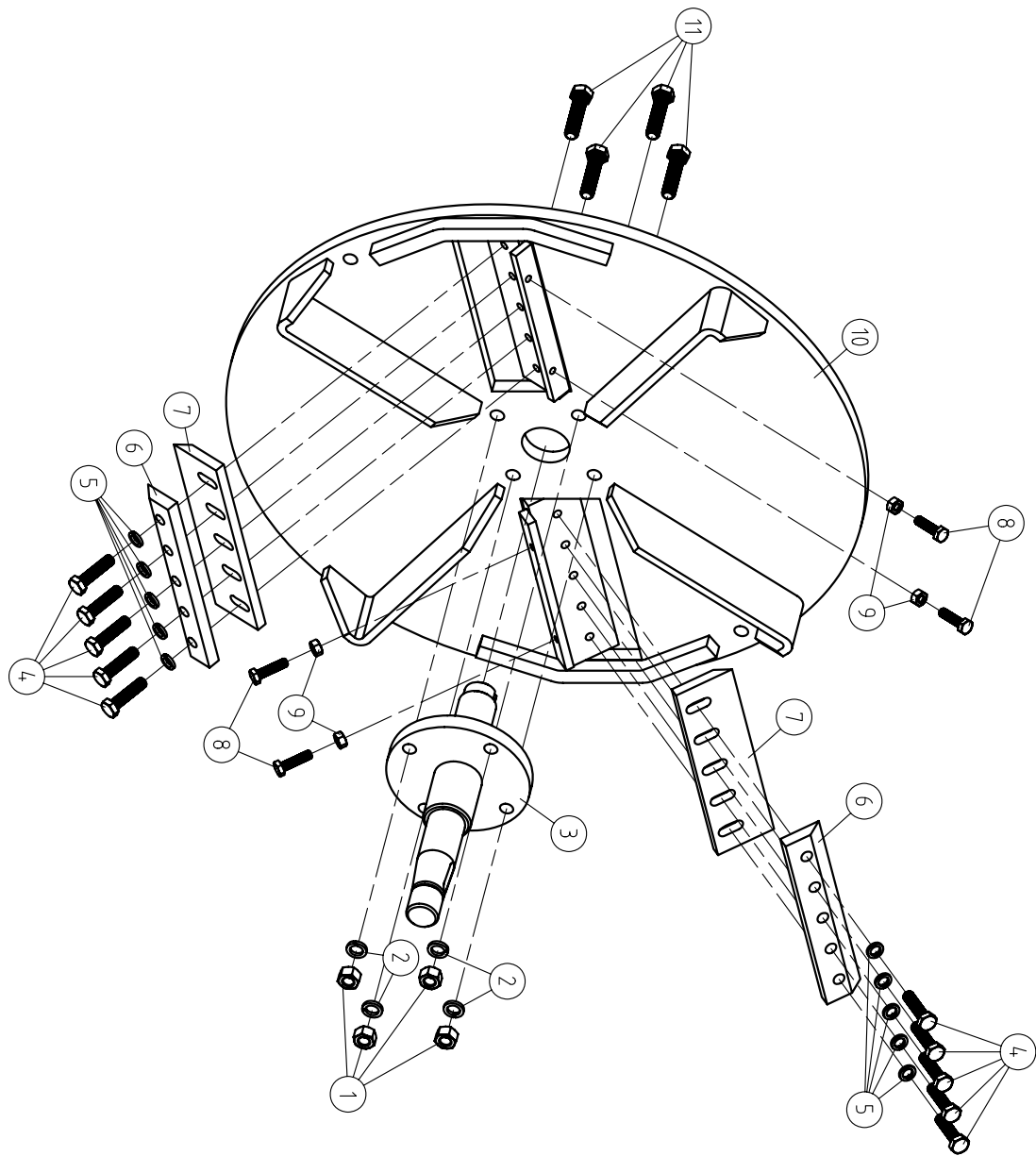
NO.	PART NO.	PARTS DESCRIPTION
1	WCM8-00015	DISCHARGE BUCKET
2	WCM8-00191	SPACER
3	GB5783-86	BOLT M10*35
4	GB97.1-85	PLAIN WASHER10
5	GB6184-86	NUT M10
6	WCM8-00180	COMPACT BOARD
7	WCM8-00036	DISCHARGE PIPE WELDMENTS
8	FM100.00.018	BOLT ASSEMBLY
9	WCM8-00012	DISCHARGE COVER
10	WCM8-00038	HANDLE ASSEMBLY
11	GB879-86	SPRING PIN 6*24
12	WCM8-00184	LOCK PIN
13	WCM8-00185	LOCK SRPING
14	WCM8-00186	LOCK SRPING SEAT



NO.	PART NO.	PARTS DESCRIPTION
1	GB5783-86	BOLT M10*30
2	GB6170-86	NUT M10
3	WCM8-00193	CONNECTING PLATE
4	WCM8-00023	STOP HANDLE
5	S26.01.103	PROTECT COVER
6	WCM8-00027	HANDLE
7	WCM8-00194	CONNECTING PLATE
8	WCM8-00022	LOCKING LINE
9	WCM8-00026	SWING WELDMENT
10	GB5783-86	BOLT M12*30
11	GB97.1-85	PLAIN WASHER12
12	GB6184-86	NUT M12
13	GB5783-86	BOLT M12*30
14	GB93-87	SPRING WASHER6
15	GB97.1-85	PLAIN WASHER6
16	WCM8-00032	SWING WELDMENT AXIS
17	GB6184-86	NUT M10
18	GB97.1-85	PLAIN WASHER 10
19	GB5783-86	BOLT M10*25
20	WCM8-00031	SUPPORT FOR ROLLER
21	WCL8-00170	SPRING
22	WCM8-00131	ROLLER AXES
23	WCM8-00030	SET UP PIPE
24	UCFL204	BEARING SEAT FL204
25	WCM8-00028	ROLLER
26	24PMF.03.017A	OUTTER DRIVE SHAFT
27	WCL8-00170	SPRING
28	24PMF.03.018A	INNER DRIVE SHAFT
29	24PMF.03.108	CLUTCH OUTER CLAW
30	24PMF.03.107	CLUTCHINNER CLAW
31	GB11544-97	BELT
32	24PMF.03.105	BELT PULLEY
33	WCM8-00187	SUPPORT
34	GB5783-86	BOLT M8*20
35	GB93-87	SPRING WASHER8
36	GB97.1-85	PLAIN WASHER8
37	GB6184-86	NUT M6
38	WCM8-00189	UNLOCK BOARD
39	GB5782-86	BOLT M6*30
40	WCM8-00190	SPRING
41	Q/IAKY01-91	WORM REDUCTION GEAR
42	WCM8-00182	PULL BOARD
43	WCM8-00122	LOCKING BOARD
44	GB5783-86	BOLT M8*30
45	GB6170-86	NUT M8
46	WCM8-00121	SPRING
47	GB5782-86	BOLT
48	WCM8-00183	SUPPORT SEAT
49	GB6184-86	NUT M8
50	WCM8-00181	LOCKING SEAT



NO.	PART NO.	PARTS DESCRIPTION
1	WCL5-00114	NUT M40*1.5
2	WCL5-00115	LOCKING WASHER
3	WCL8-00112	LARGE BELT PULLEY
4	GB11544-97	BELT
5	GB6184-86	NUT M16*1.5
6	GB97.1-85	PLAIN WASHER16
7	GB278-89	BEARING 104
8	WCL5-00107	SAPCER
9	WCL5-00106	TENSION WHEEL
10	WCL5-00016	SUPPORT IF TENSION WHEEL
11	WCM8-00017	COVER
12	GB6184-86	NUT M30*2
13	WCL8-00108	SMALL BELT PULLEY
14	UCF207	BEARING SEAT F207
15	GB6184-86	NUT M12
16	GB6184-86	NUT M10
17	GB5287-85	BIG PLAIN WASHER
18	GB5783-86	BOLT M12*40
19	GB/T 1096-2003	PLAIN KEY12*50
20	WCL5-00109	OUTPUT SHAFT
21	UCFL207	BEARING SEAT FL207
22	GB6184-86	NUT M14
23	GB5783-86	BOLT M14*45
24	GB97.1-85	PLAIN WASHER 12
25	GB6170-86	NUT M12
26	WCM8-01001	FLY WHEEL ASSEMBLY
27	GB/T 1096-2003	PLAIN KEY10*25
28	WCL5-00018	SUPPORT BEARING SEAT
29	WCM8-02001	SUPPORT WELDMENT ASSEMBLY
30	MZ105.115	WASHER
31	GB93-87	SPRING WASHER12
32	GB5783-86	BOLT M12*30
33	WCL8-00130	BELT PULLEY
34	GB/T 1096-2003	PLAIN KEY C6*14



NO.	PART NO.	PARTS DESCRIPTION
1	GB6170-86	NUT M12
2	GB93-87	SPRING WANSHER 12
3	WCL8-01011	FLY WHEEL AXLE WELDMENT
4	GB5783-86	BOLT M10*40
5	GB93-87	SPRINGWASHER
6	WCM8-01102	COMPACT BOARD FOR BLADE
7	WCM8-01101	BLADE
8	GB5783-86	BOLTS M8*30
9	GB6170-86	NUT M8
10	WCM8-01010	FLY WHEEL ASSEMBLY
11	GB5783-86	BOLT M12*50