



SAFETY RECALL BULLETIN

SUBJECT:		No: SR-15-002	
ETACS ECU – SAFETY RECALL CAMPAIGN		DATE: June, 2015	
		MODEL: See below	
CIRCULATE TO:	<input checked="" type="checkbox"/> GENERAL MANAGER	<input checked="" type="checkbox"/> PARTS MANAGER	<input checked="" type="checkbox"/> TECHNICIAN
<input checked="" type="checkbox"/> SERVICE ADVISOR	<input checked="" type="checkbox"/> SERVICE MANAGER	<input checked="" type="checkbox"/> WARRANTY PROCESSOR	<input checked="" type="checkbox"/> SALES MANAGER

PURPOSE

Due to a manufacturer error, the ETACS ECU on affected vehicles may contain components with a high electrical resistance. This condition can result in voltage instability, and in the worst case, the vehicle could lose headlights, taillights, and/or windshield wiper functionality.

This campaign bulletin instructs dealers to inspect the production date stamp on the ETACS ECU and replace all units built within a certain production period.

AFFECTED VEHICLES

Certain 2009 – 2010 Lancer vehicles built January 12, 2009 to July 6, 2010
 Certain 2009 – 2010 Lancer Ralliart vehicles built January 13, 2009 to June 30, 2010
 Certain 2010 Lancer Sportback vehicles built June 17, 2009 to June 8, 2010
 Certain 2010 Lancer Sportback Ralliart vehicles built June 17, 2009 to May 13, 2010
 Certain 2010 Lancer Evolution vehicles built July 14, 2009 – August 4, 2010
 Certain 2009 – 2010 Outlander vehicles built January 12, 2009 to August 27, 2010

IMPORTANT

Affected new or used inventory vehicles must be repaired before the vehicle is delivered. Dealers must check their inventory vehicles' VINs on the Warranty Super Screen to verify whether the vehicle is involved in this recall campaign. It is a violation of Federal law for a dealer to deliver a new motor vehicle or any new or used item of motor vehicle equipment (including a tire) covered by the notification under a sale or lease until the defect or non-compliance is remedied.

CUSTOMER NOTIFICATION

A letter will be sent to all owners of affected vehicles telling them to contact their local Authorized Mitsubishi Motors dealer to have the ETACS ECU inspected and replaced if necessary. A copy of the customer notification letter appears at the end of this bulletin.

REQUIRED OPERATIONS

Before starting this campaign procedure, **CHECK THE WARRANTY SUPERSCREEN** to verify if the vehicle is an affected VIN for this campaign and this campaign procedure has not already been completed.

SPECIAL EQUIPMENT

The following equipment is needed to code and customize the ETACS ECU:

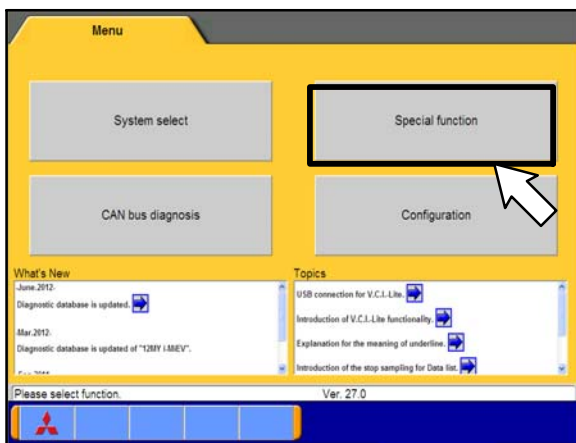
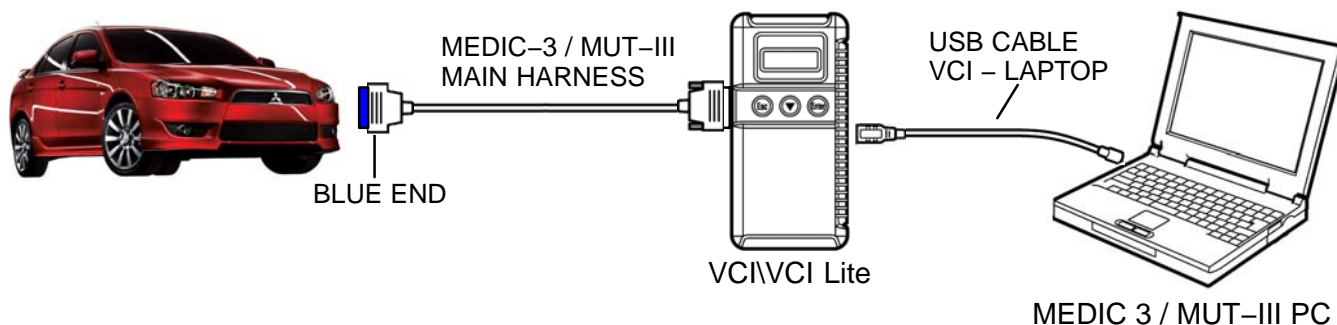
- VCI (Vehicle Communication Interface) or VCI Lite – MB991824 or MB992744V.
- MEDIC Laptop/Tablet with A/C power adapter – 520924, or FZG1MK2.
- MUT-III main harness 'A' (blue connector at the DLC end) – MB991910 or MB992745V.
- USB 2.0 cable – MB991827 or RRAR1MBR-108GL.

RECORDING ETACS CUSTOMIZATION INFORMATION

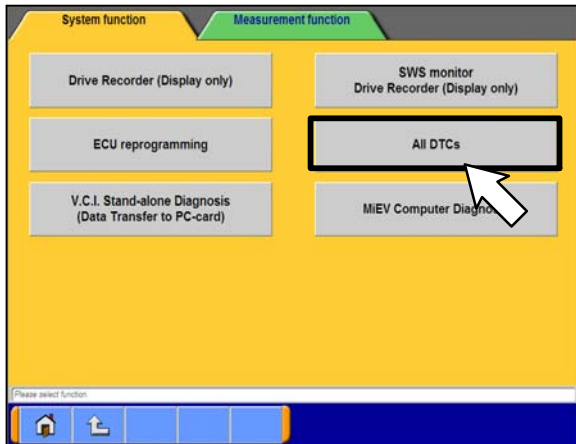
1. Connect the equipment as follows:

- Turn the MEDIC PC/tablet on. If the battery indicator in the lower right hand corner of the screen does not show a full charge, it is recommended that either the battery be charged prior to beginning, or that reprogramming be completed with the A/C power adaptor connected.
- Connect the USB cable to the VCI/VCI Lite.
- When the laptop/tablet displays the MUT-III main screen, connect the USB cable to the device.
- Connect the MUT-III main harness with the blue DLC connection to the VCI/VCI Lite.
- Connect the blue connection of the MUT-III main harness to the vehicle's data link connector.
- Turn the VCI power switch ON . Verify that the indicator lamp in the upper right corner of the screen is green.

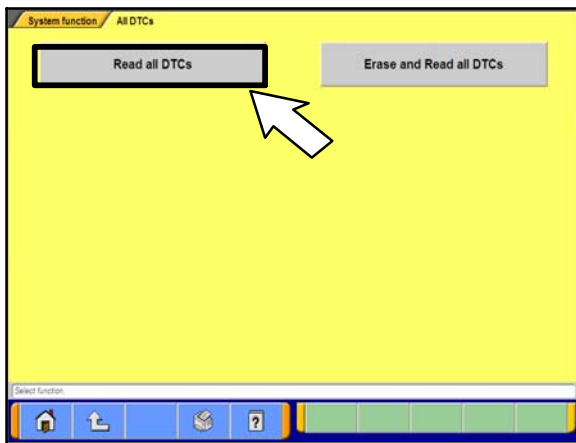
NOTE: VCI and MEDIC 3 Laptop shown for illustration purposes only



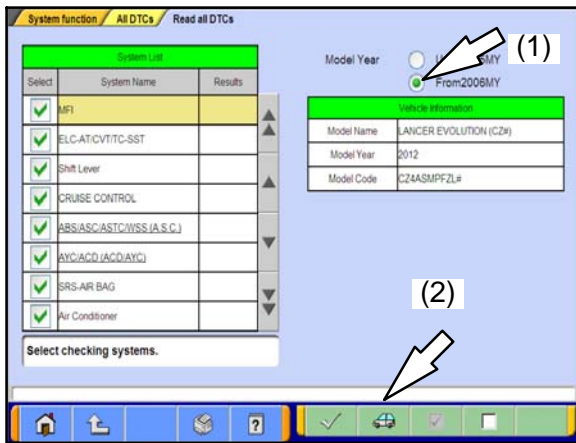
2. Turn the ignition switch to the "ON" position.
3. From the MEDIC main page,
 - a. Click on MUT-III
 - b. Select "Special Function."



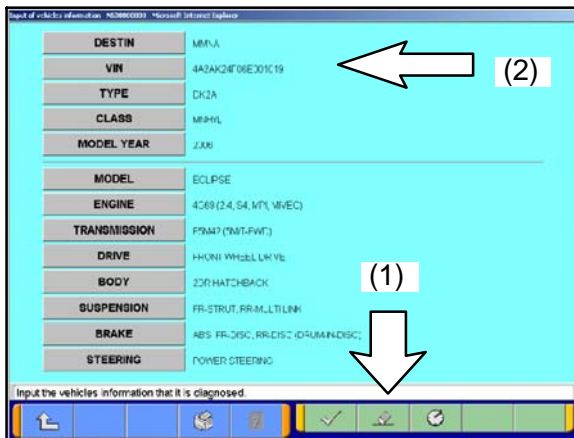
c. Select "All DTCs."



d. Select "Read all DTCs."



e. Make sure the "From 2006MY" field is selected (1). Click on the car icon at the bottom of the page to select your vehicle (2).

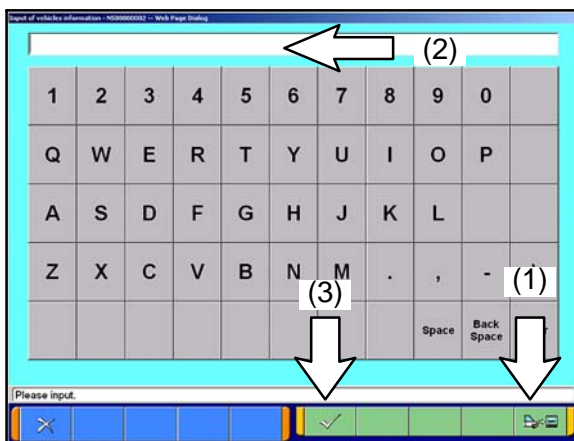


Input the vehicles information that it is diagnosed.

DESTIN	MINNA
VIN	4ASAK24F06EX01C19
TYPE	CK2A
CLASS	MRHL
MODEL YEAR	ZXR
MODEL	ECLPSE
ENGINE	4C69 (2.4, S4, MP, NVEQ)
TRANSMISSION	F9M47 (5MT-FMT)
DRIVE	FRONT WHEEL DRIVE
BODY	2DR HATCHBACK
SUSPENSION	FR-STRUT, FR-ML, TL-IRM
BRAKE	ABS- FR-DISC, RR-DISC (4-WHEEL DISC)
STEERING	POWER STEERING

- f. If the VIN listed does not match the vehicle you are working on, click on the eraser icon at the bottom of the page (1).

Click on the VIN button (2).

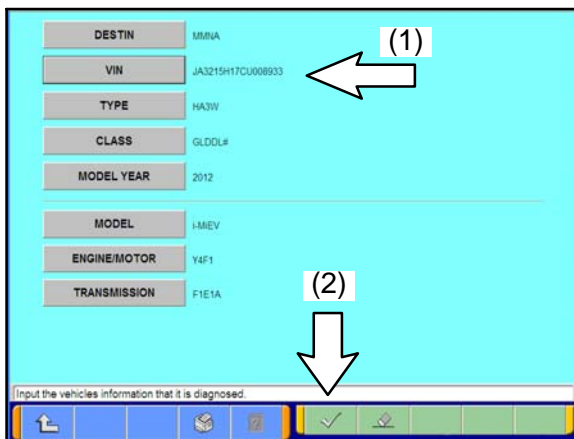


Please input.

1	2	3	4	5	6	7	8	9	0	
Q	W	E	R	T	Y	U	I	O	P	
A	S	D	F	G	H	J	K	L		
Z	X	C	V	B	N	M	.	,	-	
							Space	Back Space		

- g. Click on the icon in the lower RH corner of the screen to have the MUT-III automatically read the VIN (1). If a message appears saying that the VIN cannot be read automatically, manually type the 17 digit VIN into the VIN field (2).

When the VIN is entered correctly, click on the check mark icon to continue (3).

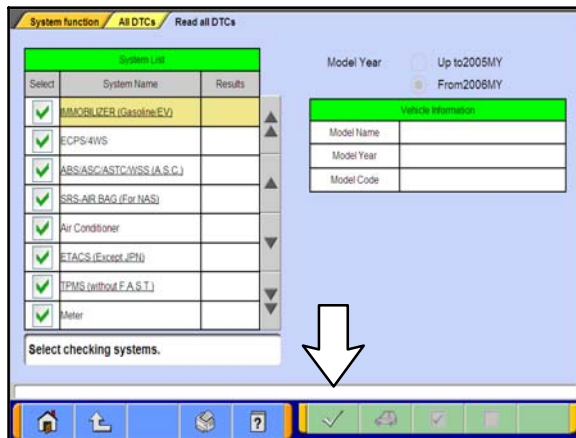


Input the vehicles information that it is diagnosed.

DESTIN	MINNA
VIN	JA3215H17CU008933
TYPE	HA3W
CLASS	GLDDL#
MODEL YEAR	2012
MODEL	HMEV
ENGINE/MOTOR	Y4F1
TRANSMISSION	F1E1A

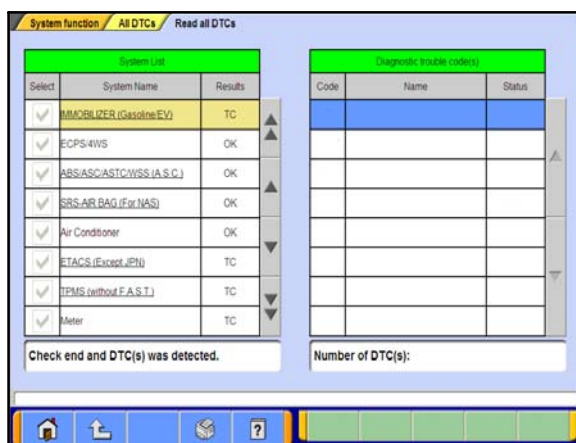
- h. Ensure the VIN entered is correct (1).

Click on the check mark icon to continue (2).



i. Click on the check mark icon at the bottom of the page to initiate DTC scan.

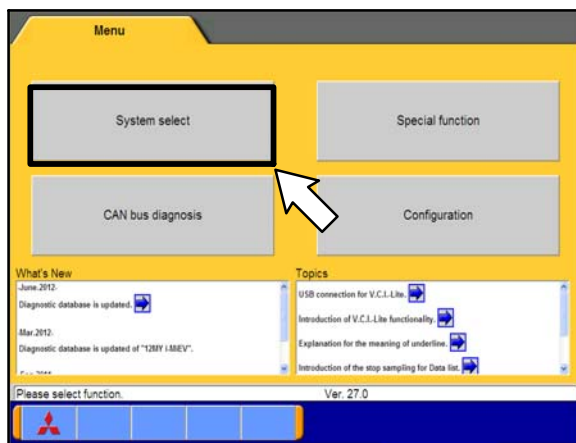
Confirm scanning for all DTCs by clicking on the check mark icon when prompted.



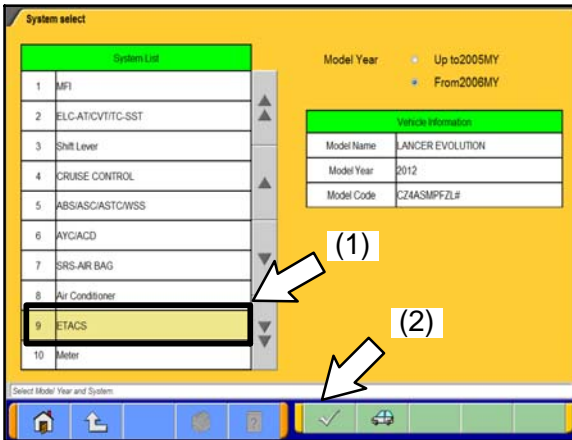
j. If there are any DTCs displayed, trouble shoot the DTC's according to the applicable service manual before proceeding.



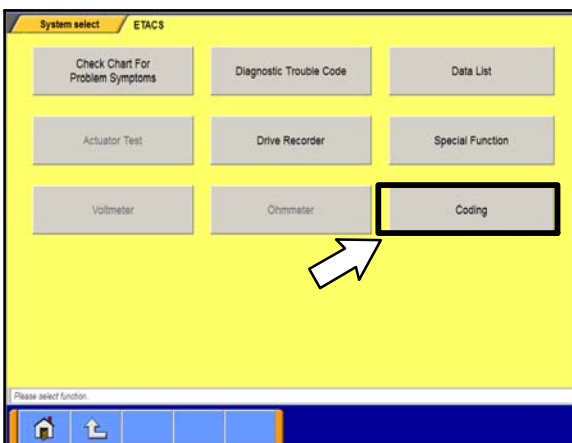
4. Return to the main menu by selecting the Home icon in the lower left corner.



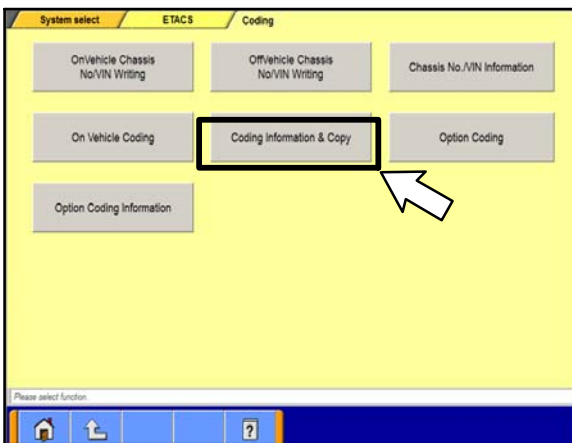
a. Select "System select."



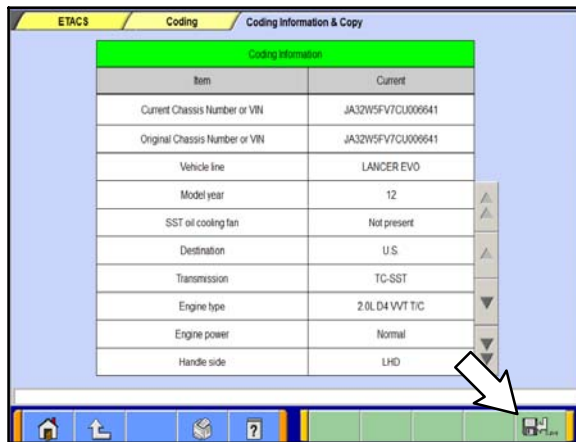
b. In the System List menu, scroll down and select ETACS (1). Make sure it is highlighted, then click on the check mark icon (2).



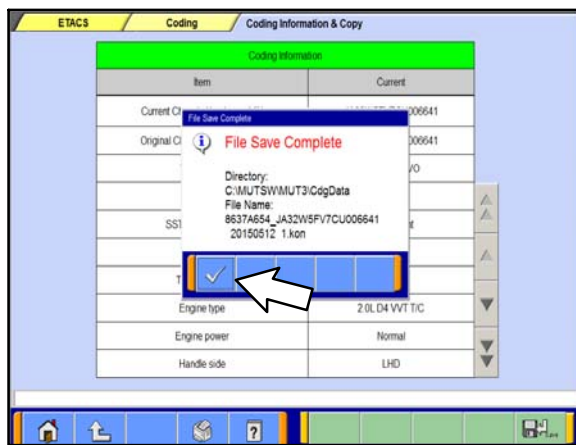
c. Select "Coding."



d. Select "Coding Information & Copy."



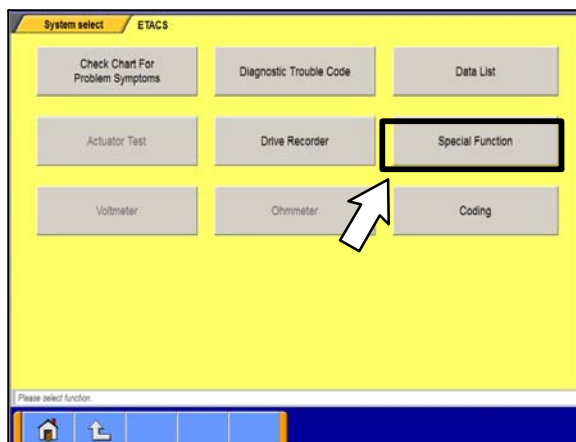
- e. Select the Save icon in the lower right corner.
- f. Click the check mark icon to confirm copying coding data from ECU.



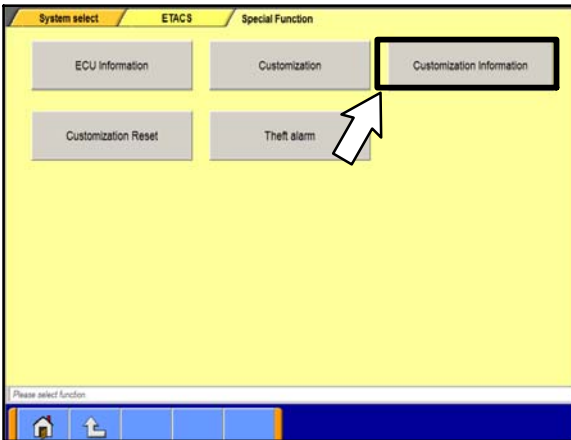
- g. A window will appear confirming the copy is saved. Click on the check mark icon to continue.



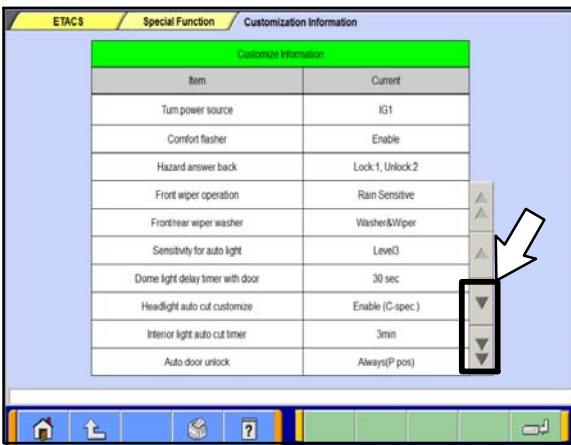
- h. Return to the ETACS menu by clicking the back button in the lower left corner twice.



- i. Select Special function.



j. Select customization information.



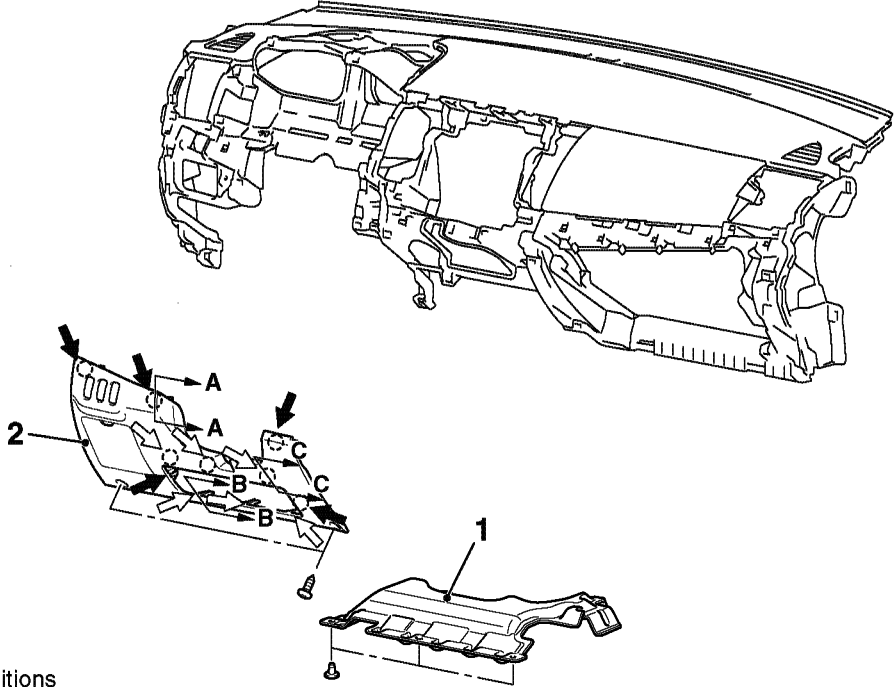
k. With a pen or pencil, copy the customization information list to the customization information sheet located later in this bulletin. **If the ETACS ECU requires replacement, this information must be transferred to the new ETACS ECU.**

Make sure to scroll down the menu and copy all fields to the customization information sheet.

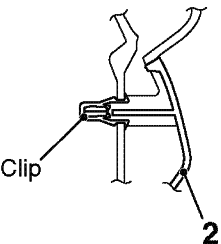
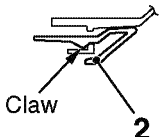
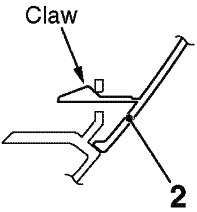
- l. Disconnect the MUT-III main harness from the vehicle's data link connector.
- m. Turn the ignition switch to the "OFF" position.

INSPECTION AND REPLACEMENT PROCEDURE

1. Move the driver seat to the full rearward position. Remove the driver side floor mat (if equipped).
2. Disconnect the negative (-) battery terminal and wrap with electrical tape.
3. Remove the instrument panel lower (Lancer based vehicles) or side lower panel (Outlander).
 - a. For Lancer based vehicles:



Note
 ◄ : Clip positions
 ◄ : Claw positions

Section A - A	Section B - B	Section C - C
		

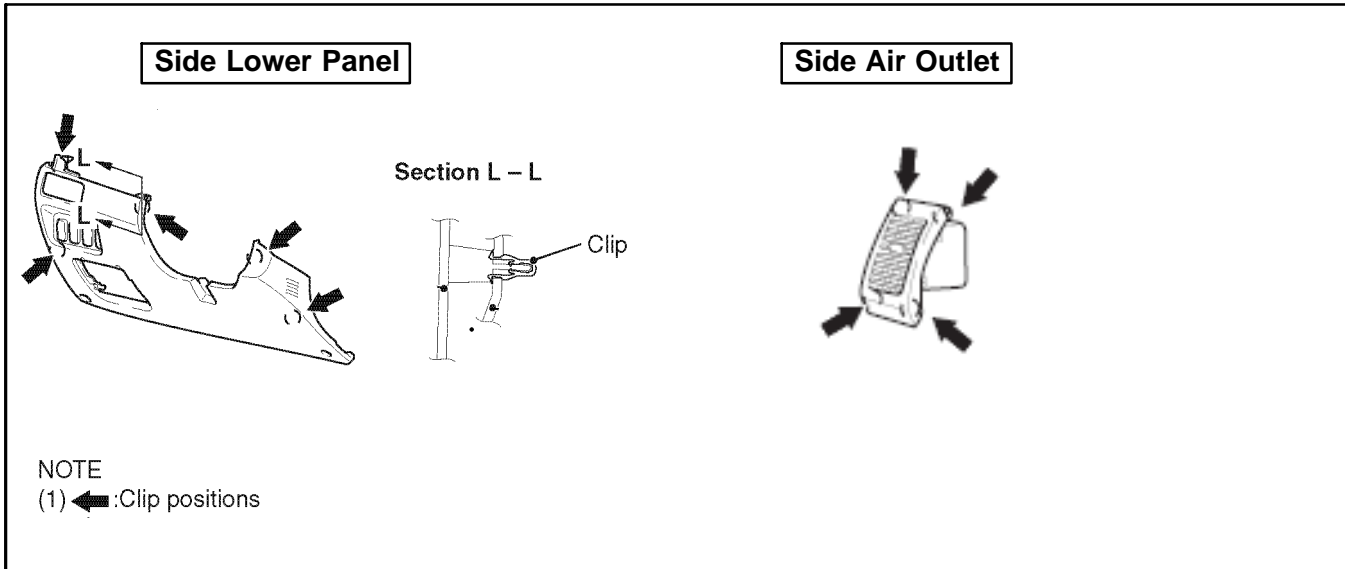
Removal steps

1. Instrument panel cover lower
 <Vehicles with instrument panel cover lower>

Removal steps (Continued)

2. Instrument panel lower

b. For Outlander vehicles:



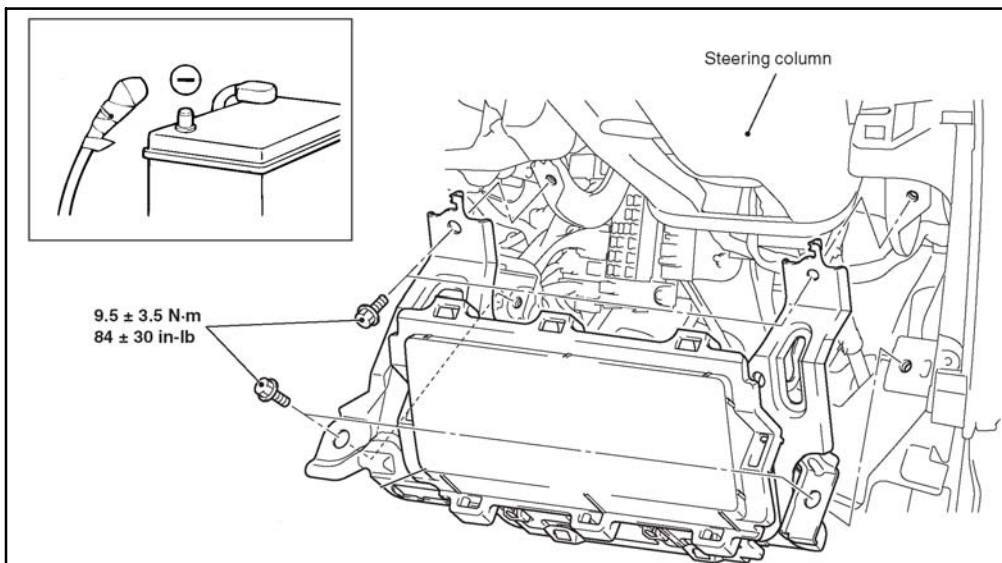
⚠ WARNING Ensure the negative (-) battery cable has been disconnected for at least 60 seconds prior to working with any air bag components.

⚠ WARNING Never attempt to disassemble or repair the knee air bag modules. If faulty, replace it.

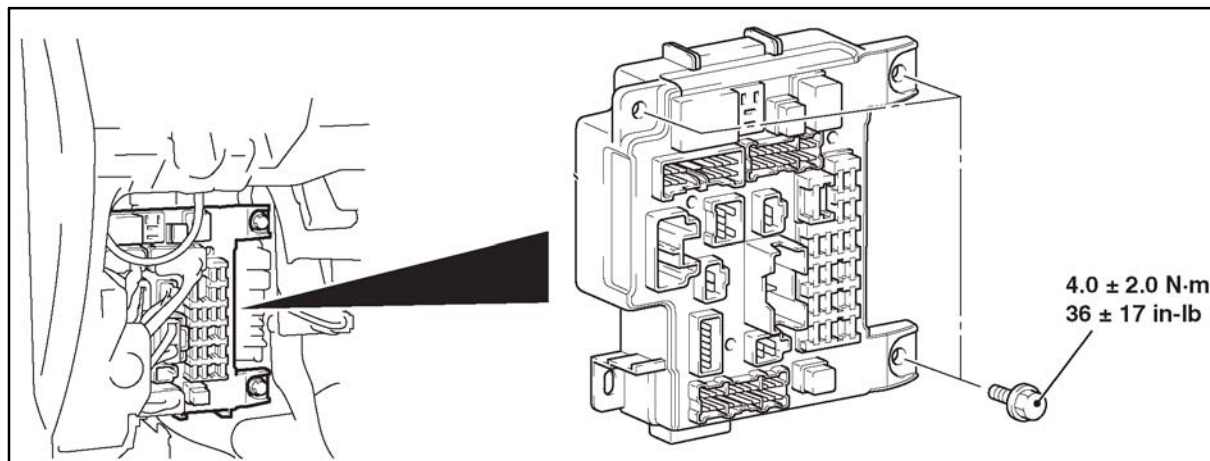
⚠ WARNING Do not drop the knee air bag modules or allow contact with water, grease, or oil. Replace it if a dent, crack, deformation or rust is detected.

⚠ WARNING Do not expose the knee air bag modules to temperatures over 93° C (200° F).

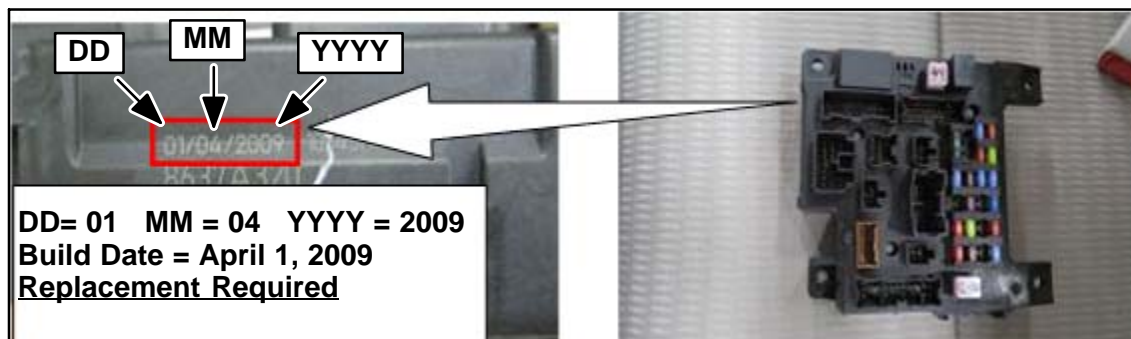
4. On Lancer based vehicles, unbolt the driver side knee air bag module and set the module aside for ETACS ECU access. **Do not disconnect the air bag module wiring harness.**



5. Disconnect all wiring harness connectors connected to the ETACS ECU. Remove the ETACS ECU.



6. Check the production date (DD/MM/YYYY) on the left side of the ETACS ECU.



- If the production date is September 30, 2008 or earlier (30/09/2008), **replacement is NOT required.**
 - If the production date is September 1, 2010 or later (01/09/2010), **replacement is NOT required.**
 - If the production date is from October 1, 2008 to August 31, 2010 (01/10/2008 – 31/08/2010), **replacement is required.**
7. If required, replace the ETACS ECU with the corresponding part number shown in the **Parts Section**.
8. Reinstall the ETACS ECU. Torque to 36 ± 17 in-lb (4.0 ± 2.0 N-m). Reconnect the wiring connectors as follows:

IMPORTANT

If the ETACS ECU requires replacement, reuse the blower motor relay (C-303, reference following diagram).

The number of connector pins and the connector color (except milk white)* are shown for ease of retrieval.

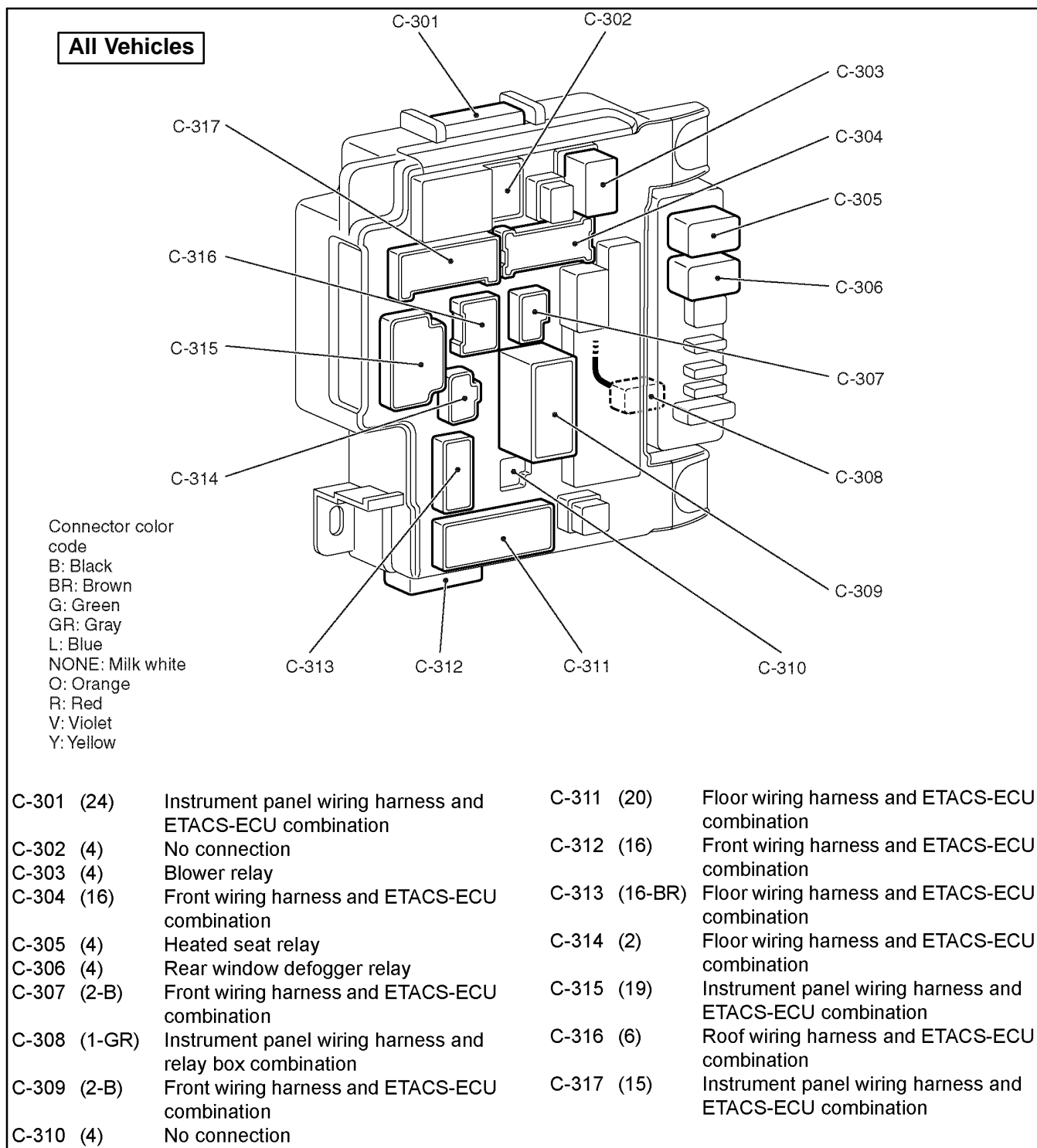
Example: (2-B)

Connector color
(milk white if no color is indicated)

Number of connector pins

*: Typical connector colors

B: Black	BR: Brown
Y: Yellow	V: Violet
L: Blue	O: Orange
G: Green	GR: Gray
R: Red	NONE: Milk white



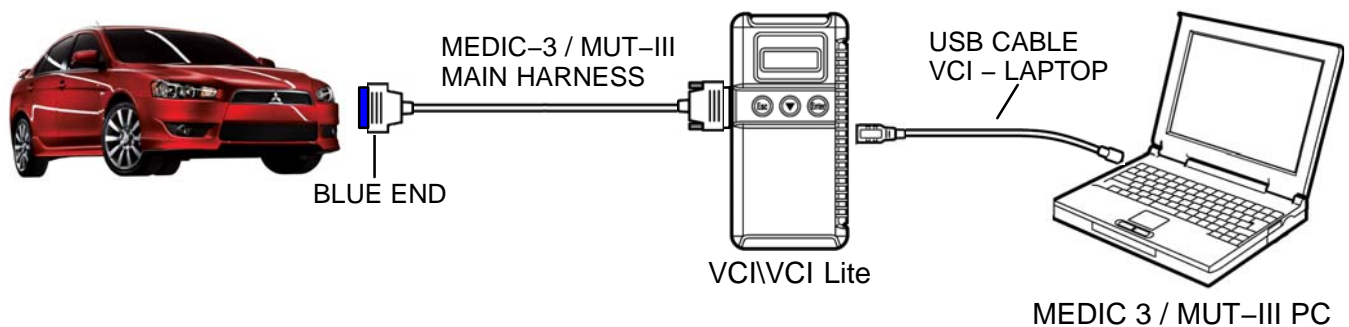
9. Remove electrical tape from the negative battery terminal and reconnect it. Torque to 44 ± 9 in-lb (5 ± 1 N-m).
10. If the ETACS ECU was **replaced**, proceed to the **Coding / Customizing ETACS ECU** section. If the ETACS ECU was **not replaced**, skip the **Coding / Customizing ETACS ECU** section and proceed directly to the **Vehicle Reassembly** section.

CODING / CUSTOMIZING ETACS ECU

1. Connect the equipment as follows:

- Turn the MEDIC PC/tablet on. If the battery indicator in the lower right hand corner of the screen does not show a full charge, it is recommended that either the battery be charged prior to beginning, or that reprogramming be completed with the A/C power adaptor connected.
- Connect the USB cable to the VCI/VCI Lite.
- When the laptop/tablet displays the MUT-III main screen, connect the USB cable to the device.
- Connect the MUT-III main harness with the blue DLC connection to the VCI/VCI Lite.
- Connect the blue connection of the MUT-III main harness to the vehicle's data link connector.
- Turn the VCI power switch ON . Verify that the indicator lamp in the upper right corner of the screen is green.

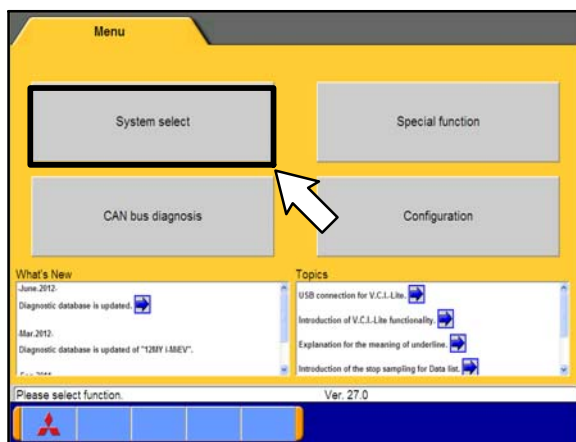
NOTE: VCI and MEDIC 3 Laptop shown for illustration purposes only

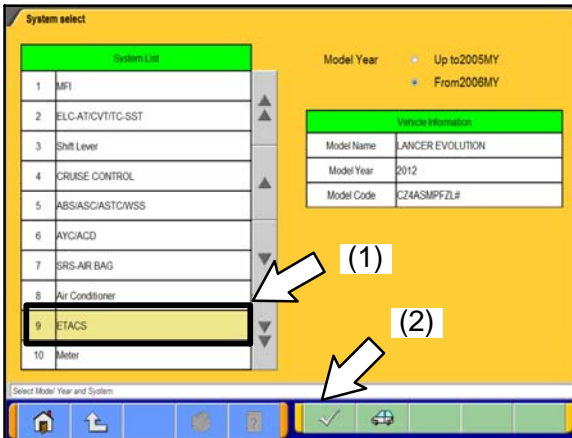


2. Turn the ignition switch to the "ON" position.

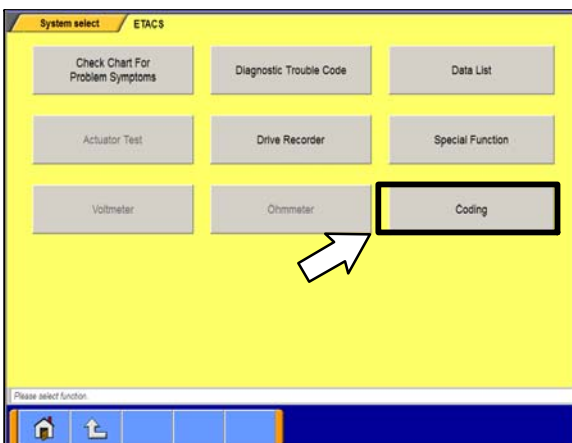
3. Return to the main menu by selecting the Home icon in the lower left corner.

a. Select "System select."

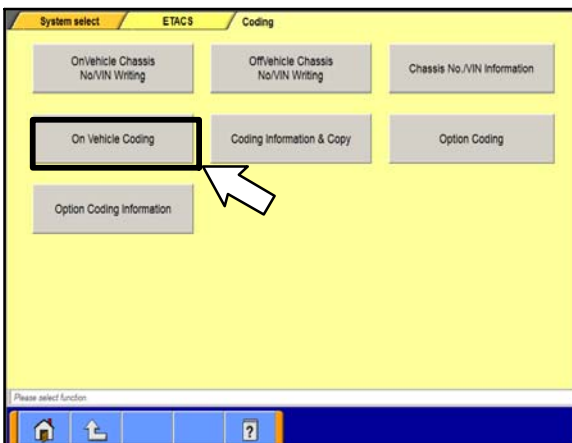




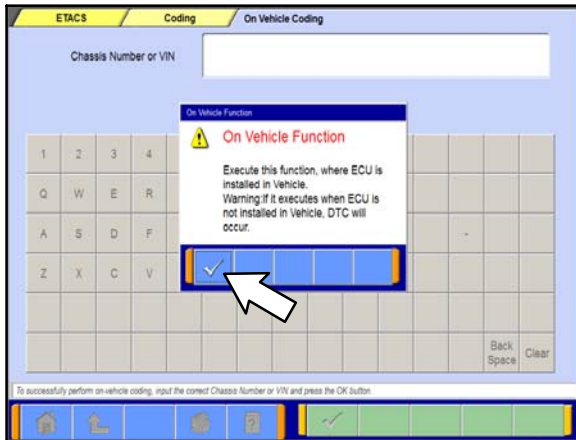
b. In the System List menu, scroll down and select ETACS (1). Make sure it is highlighted, then click on the check mark icon (2).



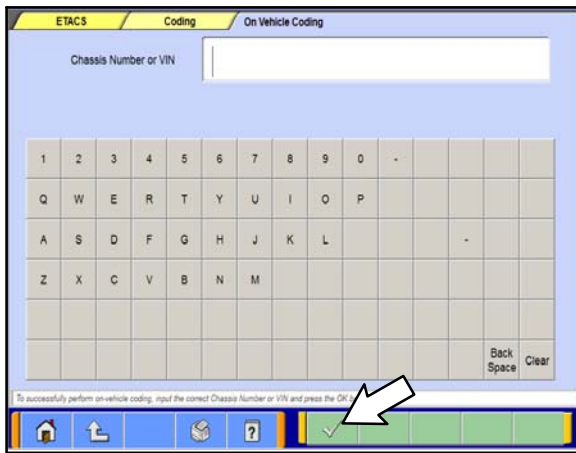
c. Select "Coding."



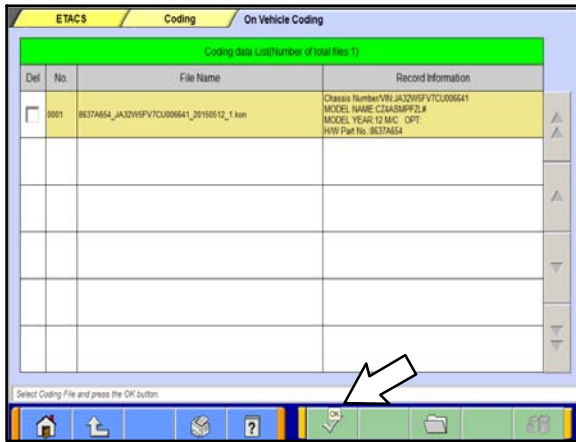
d. Select "On Vehicle Coding."



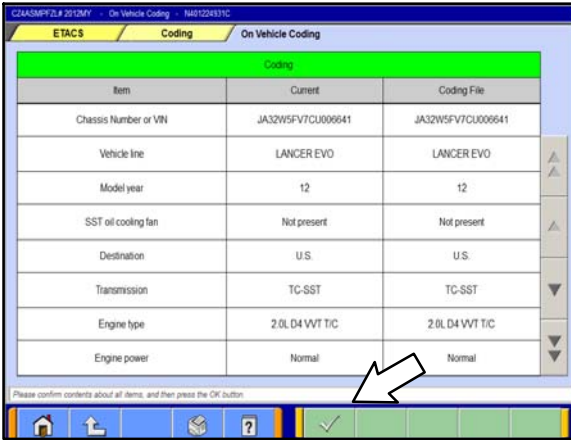
e. Click on the check mark icon to confirm on vehicle coding.



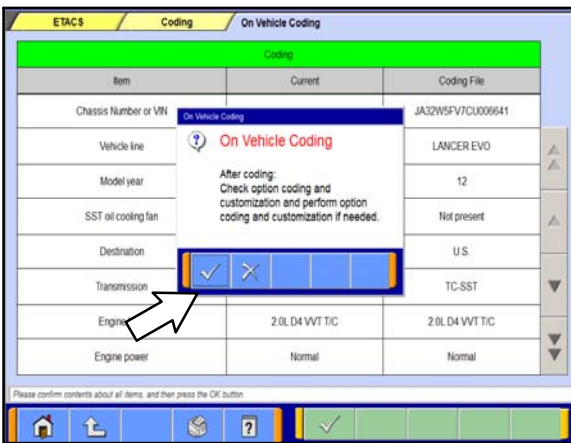
f. Type in the VIN and click on the check mark icon.



g. Ensure the correct coding file is highlighted (matches vehicle VIN). Click on the check mark icon.



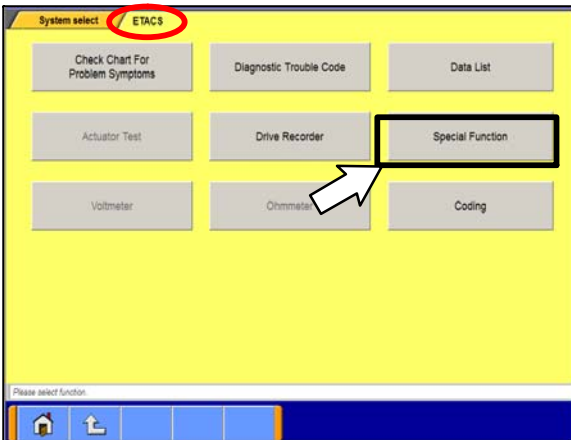
h. Confirm the pre-filled information matches the vehicle. Click on the check mark icon.



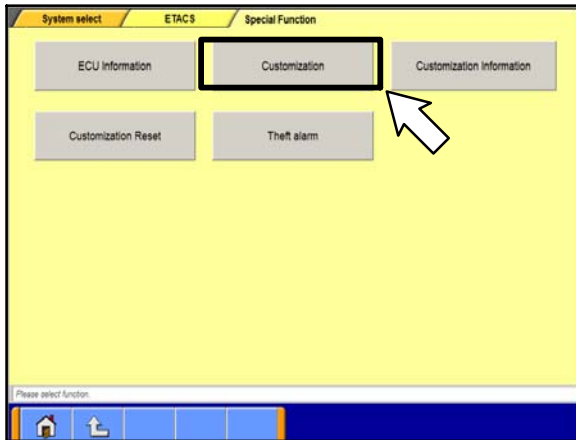
i. Click on the check mark icon to begin coding. When coding is complete, click on the check mark icon again.



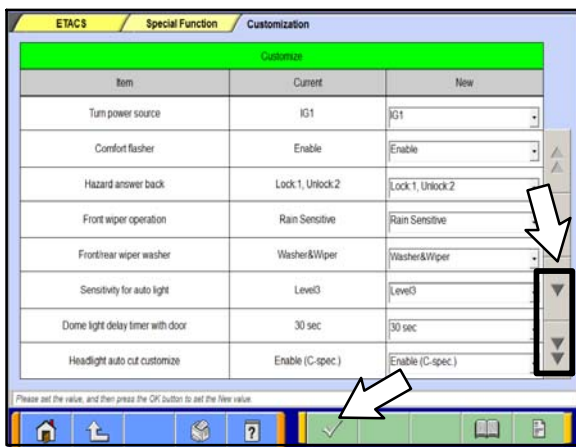
j. Return to the ETACS menu by clicking the back button in the lower left corner twice.



k. Select "Special Function."



I. Select "Customization."



m. Referencing the customization information sheet recorded earlier, select the appropriate option for each field.

Make sure to scroll down the menu and insert all fields from the customization information sheet.

Click on the check mark icon.

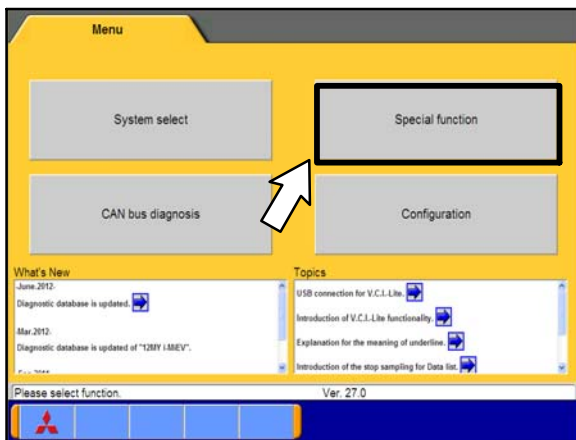
n. Click on the check mark icon to initiate customization.

o. Click on the check mark icon to confirm customization has completed.

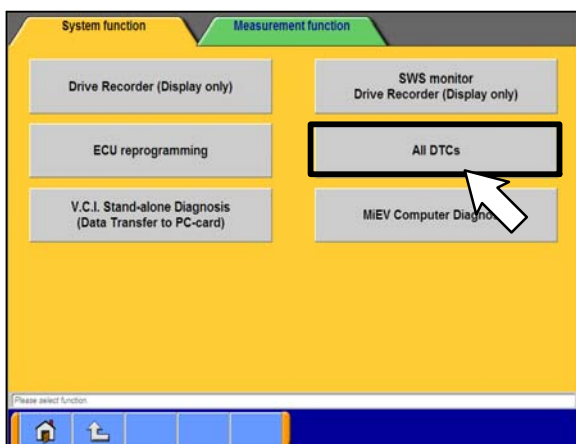
VEHICLE REASSEMBLY



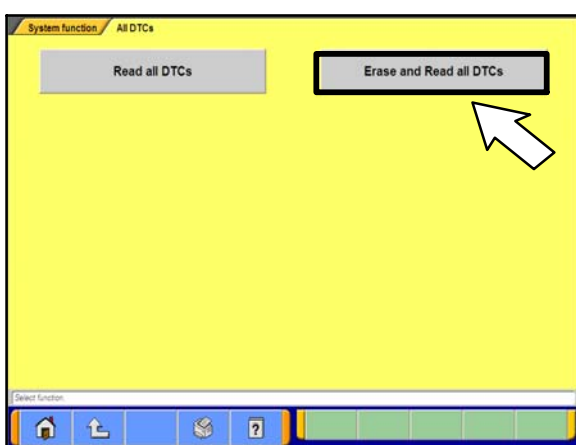
1. Turn the ignition switch to the "ON" position.
2. Return to the main menu by selecting the Home icon in the lower left corner.



a. Select "Special function."



b. Select "All DTCs."



c. Select "Erase and Read all DTCs."

d. If any DTCs appear, troubleshoot per the applicable service manual.

3. Initialize the throttle valve control servo.
 - a. Turn the ignition switch to "OFF" position.
 - b. Keep the ignition switch in "OFF" position for at least 10 seconds.
4. Ensure the ETACS ECU was correctly installed by confirming the following operations:
 - a. Start the engine.
 - b. Illuminate the headlamps.
 - c. Illuminate the taillamps.
 - d. Illuminate the interior lamps by opening the front driver side door.
 - e. Activate the blower fan.
 - f. Confirm no warning lamp indicators appear in the instrument panel.
 - g. Turn the ignition switch to the "OFF" position.
5. If the driver side knee air bag module was unbolted:

⚠ WARNING Ensure the negative (-) battery cable has been disconnected for at least 60 seconds prior to working with any air bag components.

⚠ WARNING Never attempt to disassemble or repair the knee air bag modules. If faulty, replace it.

⚠ WARNING Do not drop the knee air bag modules or allow contact with water, grease, or oil. Replace it if a dent, crack, deformation or rust is detected.

- ⚠ WARNING** Do not expose the knee air bag modules to temperatures over 93° C (200° F).
- a. Disconnect the negative (-) battery terminal and wrap with electrical tape. **Wait at least 60 seconds.**
 - b. Install driver side knee air bag module. Torque to 84 ± 30 in-lb (9.5 ± 3.5 N-m).
 - c. Remove electrical tape from the negative battery terminal and reconnect it. Torque to 44 ± 9 in-lb (5 ± 1 N-m).
6. Reinstall the instrument panel lower (Lancer based vehicles) or side lower panel (Outlander) and driver side floor mat if previously removed.

PARTS INFORMATION

Use the genuine Mitsubishi Part listed below:

Description	Part Number	Quantity
ETACS ECU (for Outlander)	8637A824	1
ETACS ECU (for Lancer Sportback and Lancer Sportback Ralliart)	8637A825	1
ETACS ECU (for Lancer, Lancer Ralliart and Lancer Evolution)	8637A826	1

WARRANTY INFORMATION

There are two possible ETACS repair scenarios plus two additional ETACS scenarios to cover repairs done at the same time as the C1503T Blower Motor recall. Review the scenario selection chart to choose the correct operation scenario. You may only claim one scenario.

#	If ETACS Recall Done Alone:	Campaign Operation Numbers
1	Check ETACS ECU Production Date = OK	C1502T01
2	Check ETACS ECU Production Date = Not Ok Replace ETACS ECU	C1502T02

#	If done at the same time as the C1503T Blower Recall:	Campaign Operation Numbers
3	Check ETACS ECU Production Date = OK	C1502T03
4	Check ETACS ECU Production Date = Not Ok Replace ETACS ECU	C1502T04

WARRANTY / RECALL CAMPAIGN CLAIM INFORMATION

Enter all claims as claim type 'C' – Recall/Campaign Claims

Please follow the campaign instructions when entering each claim in order to select the operation code that correctly matches up with the work that was actually performed. A claim example is provided below.

Certain 2009–2010MY – Lancer, Lancer Sportback, Lancer Ralliart, Lancer Ralliart Sportback, Lancer Evolution and Outlander Models

Claim Header Section: ETACS ECU Production Date Checks and Replacement if Necessary

Service Warranty

MITSUBISHI DEALER LINK

Claim Entry Vehicle Information

Campaign Information

Campaign Operation No: C1502T

Miles/Km: 85,000

VIN: JA.....

Service Technician: [] Emp []

Service Advisor: []

Spec Value * [] Duplicate Recall *

Dealer: 99320 Ref No: [] VIN: []

Enter in the first 6 characters of this campaign labor operation: **C1502T**

This campaign is for the replacement of the ETACS ECU on certain 2009–2010MY Lancer, Lancer Sportback, Lancer Ralliart, Lancer Ralliart Sportback, Lancer Evolution and Outlander Models.

Check the “Open Recall” area of the Superscreen each time to be certain of a vehicle’s eligibility. Only specific VINs showing **C1502T** as open are involved in this campaign.

After entering the required customer data, vehicle information and applicable campaign labor operation number on the “Repair Performed” scenario that is selected from the menu, hitting the “**Save and Continue**” button will automatically fill-in several fields. **Please note that only 1 repair scenario may be selected from the 4 available.**

CAMPAIGN INFORMATION			Campaign Operation Numbers	
Campaign Operation No	C1502T	Involved Lancer, Lancer Sportback, Lancer Ralliart, Lancer Ralliart Sportback, Lancer Evolution and Outlander	Repair Performed	C1502T01
Miles / KM	85,000		Repair Order No	C1502T02
VIN	JA4AP3AU1BZ000102			C1502T03
	Repair Date In	7 / 30 / 2015		C1502T04
	Repair Date Out			EX12345

Campaign Claim Example:

Follow these instructions to claim for performing the inspection of the ETAC ECU's production date and replacement if necessary.

PARTS:

Replacement is only necessary if the ETACs unit is within the stated production range found on the ETACs ECU itself. If a replacement is needed, only these part numbers are allowed to be claimed. No other parts are involved.

Outlander:	# 8637A824	Lancer Evolution	# 8637A826
Lancer:	# 8637A826	Lancer Sportback	# 8637A825
Lancer Ralliart	# 8637A826	Lancer Ralliart Sportback	# 8637A825

LABOR:

Follow the chart below to select the appropriate campaign labor operation and labor time that matches the repair that was actually performed and if performed at the same time as the Blower Motor Recall. These operations will appear on the dropdown.

Campaign Number: C1502T		ETACs ECU		
Campaign Operations - Select from Claim Drop Down Menu		Labor Times by Model		
Select the repair actually performed and the corresponding operation scenarios and times shown below. Check the repair order to be sure you are selecting the correct repair.				
Repair Descriptions	Operation Scenarios	Outlander	Lancer, Lancer Sportback, Lancer Ralliart, Lancer Ralliart Sportback, Lancer Evolution.	
When ETACs ECU Recall is Performed Alone.				
#1 Check ETACs ECU Production Date = OK	C1502T01	.8 hrs	.9 hrs	
#2 Check ETACs ECU Production Date = Not OK - Replace ETACS	C1502T02	.9 hrs	1.0 hrs	
When ETACs ECU Recall is Performed at the same time as the C1503T Blower Motor Recall				
#3 Check ETACs ECU Production Date = OK	C1502T03	.6 hrs	.7 hrs	
#4 Check ETACs ECU Production Date = Not OK - Replace ETACS	C1502T04	.7 hrs	.8 hrs	

OTHER CHARGES:

In some cases, towing and/or a rental car may be necessary. The lower portion of the labor page has the fields that must be filled in if there are such charges.

Select	Labor Operation	Labor Operation Description	Amount
<input type="checkbox"/>	SHO	SPECIAL HANDLING ORDER	SHO Parts Order <input type="text"/>
<input type="checkbox"/>	RENTACAR	RENTAL CAR CHARGES	Days <input type="text"/> Reason <input type="text"/> Rental Company <input type="text"/> Invoice Number <input type="text"/>
<input type="checkbox"/>	95300040	FREIGHT CHARGES	Freight Company <input type="text"/> Invoice Number <input type="text"/>
<input type="checkbox"/>	95200040	TOWING CHARGES	Towing Company <input type="text"/> Invoice Number <input type="text"/>

CUSTOMIZATION INFORMATION SHEET

If applicable, circle the corresponding condition. If not applicable, input “/” in the right column.

Items	Current condition	Not applicable
Turn power source	ACC or IG1 / IG1	
Comfort flasher	Disable / Enable	
Hazard answer back	Lock:1, Unlock:2 / Lock:1, Unlock:0 / Lock:0, Unlock:2 / Lock:2, Unlock:1 / Lock:0, Unlock:1 / Lock:2, Unlock:0 / Lock:0, Unlock:0 / Cannot select	
Front wiper operation	Normal INT / Variable INT / Speed Sensitive / Rain Sensitive / Cannot select	
Front/rear wiper washer	Only Washer / Washer & Wiper / With after wipe	
Intermittent time of rear wiper	0 sec / 4 sec / 8 sec / 16 sec / Cannot select	
Rear wiper Low speed mode	Disable / Enable / Cannot select	
Auto fold mirror	Not Auto / Open Vehicle SPD / Open/Close by IG / OPN/CLS Keyless / Cannot select	
Sensitivity for auto lamp	Level1 bright / Level2 bright / Level3 / Level4 dark / Level5 dark / Cannot select	
Auto lamp linked wiper	Disable / Enable / Cannot select	
Room lamp delay timer with door	0 sec / 7.5 sec / 15 sec / 30 sec / 60 sec / 120 sec / 180 sec / Cannot select	
Head lamp auto cut customize	Disable / Enable (A-spec.) / Enable (B-spec.) / Enable (C-spec.) / Enable (D-spec.) / Enable (E-spec.)	
Interior lamp auto cut timer	Disable / 3min / 30min / 60min	
Auto door unlock	Disable / Always(P pos) / P/W unlock (P) / Always(Lock pos) / P/W unlock(Lock) / Cannot select	
Door unlock mode	All Doors Unlock / Dr Door Unlock / Cannot select	
Horn chirp by keyless	Not sound horn / Lock any time / Lock/auto ON / W lock any time / Cannot select	
Buzzer answer back	Not Sound Buzzer / At KOS / At keyless / At Both / Cannot select	
Timer lock timer	30 sec / 60 sec / 120 sec / 180 sec / Cannot select	
Alarm	Disable / Enable / Cannot select	
Power window key off timer	0 sec / 30 sec / 180 sec / 600 sec / Cannot select	
Duration of pre-alarm	10 sec / 6 sec / Cannot select	
Multi mode	Disable / P/W:O&C, D/M:O&C / P/W:O&C / P/W:C, D/M:O&C / D/M:O&C / P/W:C / Cannot select	
Panic alarm switch	Disable / Enable / Cannot select	
Duration of horn chirp	Short / Long / Cannot select	
KOS key detect out from window	Disable / Enable / Cannot select	
KOS feature	Both enable / DoorEntry enable / ENG start enable / Both disable / Cannot select	
KOS unlock disable time	0 sec / 3 sec / 5 sec / Cannot select	
Remote ENG starter answer back	Disable / Enable / Cannot select	
P/W down operation after IG OFF	Enable / Disable / Cannot select	
P/W main SW during P/W locked	Enable / Disable / Cannot select	
ACC power auto cut	Disable / 30min / 60min	
Comfort flasher switch time	Normal / Long	
Intelligent/Comfort washer	Disable / Enable / Cannot select	
Coming home light	Disable / 15 sec / 30 sec / 60 sec / 180 sec / Cannot select	
Welcome light	Disable / Small lamp / Head lamp / Cannot select	
Rear wiper(linked reverse gear)	Enable(R wip.ON) / Enable(R/F wip.) / Cannot select	
Sensitivity for security sensor	Level 1 / Level 2 / Level 3 / Level 4 / Cannot select	



IMPORTANT SAFETY RECALL

Mitsubishi Motors North America, Inc.

6400 Katella Avenue
Cypress, CA 90630
Telephone: 714-372-6000
www.mitsubishicars.com

This notice applies to your vehicle, _____.

This notice has been sent to you in accordance with the National Traffic and Motor Vehicle Safety Act.

Date: June, 2015

Dear Mitsubishi Owner,

Reason for notice: Mitsubishi Motors North America, Inc. (MMNA) has decided that a defect which relates to motor vehicle safety exists in certain 2009 - 2010 Lancer, 2010 Lancer Sportback, 2010 Lancer Evolution, and 2009 – 2010 Outlander vehicles. Due to a manufacturing error, the ETACS ECU on affected vehicles may contain components with a high electrical resistance. This condition can result in voltage instability, and in the worst case, the vehicle could lose headlights, tail lights, and/or windshield wiper functionality.

The loss of headlights and/or windshield wipers while driving could result in reduced driver visibility increasing the risk of a crash. The loss of tail lights while driving could result in an increased risk of being rear-ended. The engine warning lamp and/or the brake warning lamp will illuminate if the ETACS ECU malfunctions.

What you should do: Please contact your local Authorized Mitsubishi Motors dealer and schedule an appointment to have the recall remedy performed on your vehicle. When you bring your vehicle in, please show the dealer this letter. (If you misplace this letter, the dealer will still make this inspection/repair to your vehicle, free of charge.)

What your dealer will do: The dealership will inspect the ETACS ECU and replace it if necessary.

How long will it take? The time needed for this remedy is approximately **1.0** hr. The dealer may need your vehicle for a longer period of time due to service scheduling issues, but every effort will be made to minimize your inconvenience.

If you experience any problem having your vehicle repaired promptly and/or at no charge, please inform us by calling the Mitsubishi Customer Relations Department at **888-648-7820**. Hours: Monday through Friday 7 a.m. to 4 p.m. (Pacific Time)

If, after contacting Mitsubishi Customer Relations, you still have a problem getting this repair made promptly and/or without charge, write to the Administrator, National Highway Traffic Safety Administration, 1200 New Jersey Avenue SE, Washington, D.C. 20590, or call the toll-free Vehicle Safety Hotline at 1-888-327-4236 (TTY: 1-800-424-9153), or go to <http://www.safercar.gov>.

If you have already encountered a problem with the ETACS ECU and had it replaced as a result of this specific condition and have paid for the repair, you may send your original repair order or invoice, **and** original receipt/proof of payment to the following address for reimbursement consideration:

Mitsubishi Customer Relations Department, P.O. Box 6400, Cypress, CA 90630-0064

If you are the lessor of this vehicle, please forward a copy of this notice to the lessee within ten days to comply with federal regulations.

We appreciate your prompt attention to this matter.

Sincerely,

Mitsubishi Motors North America, Inc.

C1502T