

JOST

OUT OF THIS WORLD

JOST KKS – push-button trailer coupling



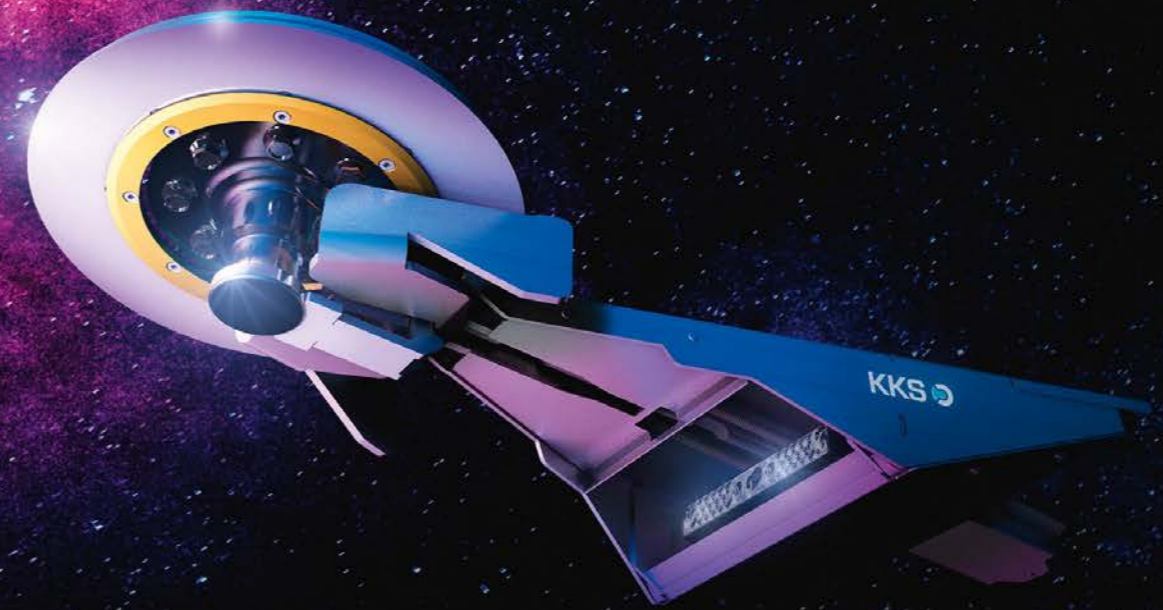


KKS: lower costs thanks to added efficiency

- » KKS cuts trailer changeover times in half. No more winding landing legs up and down, connecting lines, releasing the fifth wheel and climbing onto the catwalk!
- » KKS also reduces costs significantly – especially where short distances and frequent fifth wheel changes are involved – making it the perfect solution for cargos that require a heightened level of safety and security.
- » Thanks to remote control, monitoring, and features such as automatic landing leg retraction, KKS almost entirely removes risk of errors or damage occurring during coupling.
- » Hence, the likelihood of trailer loss due to an operator error, damage or an accident at work is effectively nil.

KKS: creating a safe, comfortable working environment

- » KKS eliminates the major safety risks involved in coupling. Drivers no longer need to climb onto the catwalk and are protected from accidents resulting from incorrect winding and connecting.
- » KKS completely does away with the physically demanding aspects of coupling, making changing trailers independent of the weather and time of day, whilst also significantly reducing the stress factor.
- » A standard pneumatic ram ensures the effortless release of the fifth wheel even when the trailer is hitched.
- » As a result of these advantages, KKS opens new possibilities for a wide range of drivers – JOST's answer to the driver shortage.



JOST KKS – be the future of logistics

Just what the universe has been waiting for: a remote-control trailer coupling solution that automates the entire coupling and uncoupling process, including air, electrics, and brakes. Retrofittable in stages, KKS is a ground-breaking innovation at the leading edge of modern logistics. **What is more, it is also available now.**

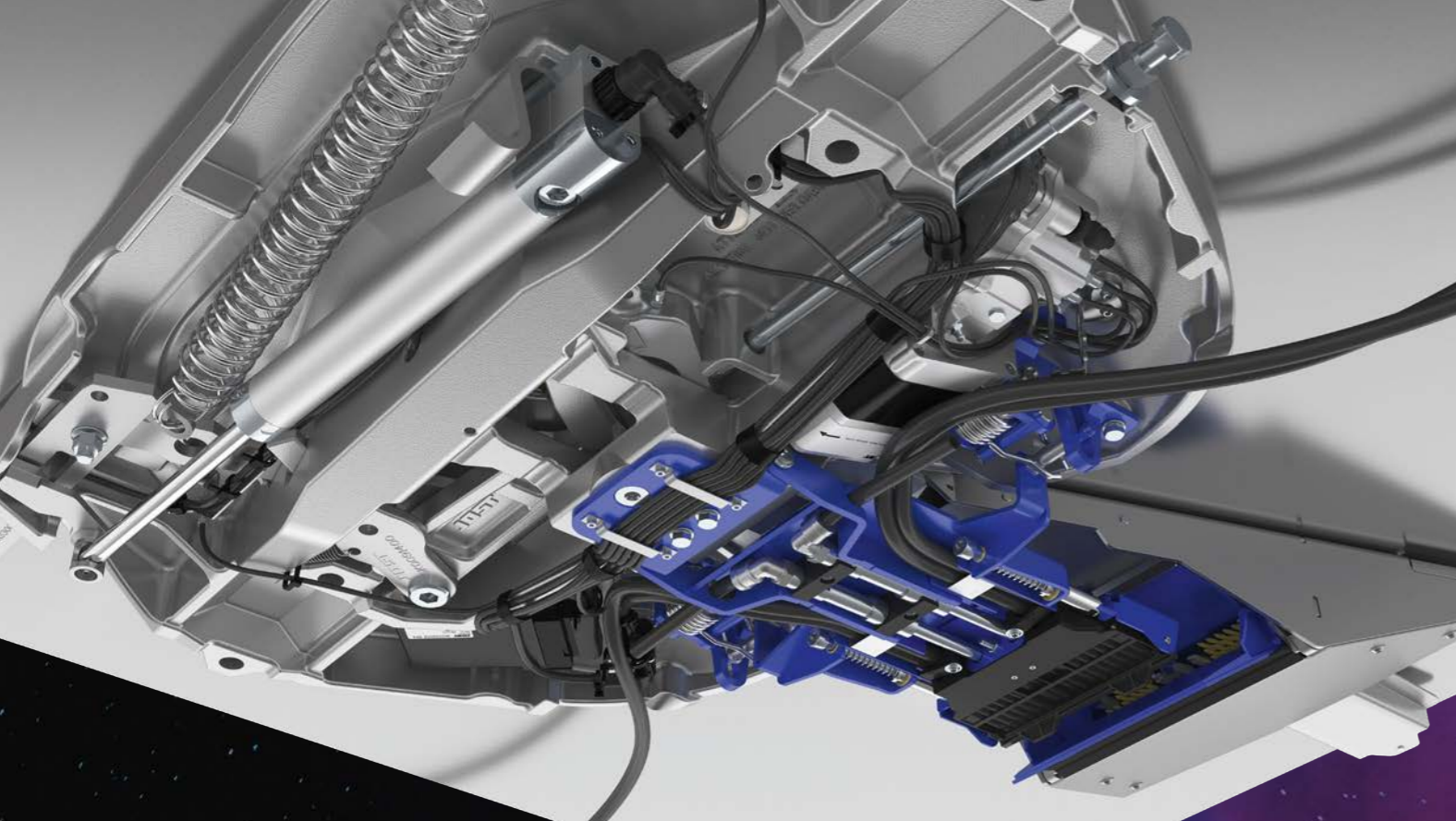
Warp Drive Competitiveness:

- » Cuts trailer changeover times by 50 percent
- » Effectively halves costs per journey leg and truck, depending on route, driving and trailer times
- » Makes coupling safer and more convenient
- » Retrofittable to most lorries and trailers
- » Let's you achieve the same results with fewer lorries
- » Intuitive to use

Space Station: World Market Leader

A pioneer in fifth wheel couplings and landing legs, JOST is a truck and trailer connection specialist with a proven track record. JOST products are characterised by outstanding quality, long-lasting reliability, and innovative design.

www.jost-world.com

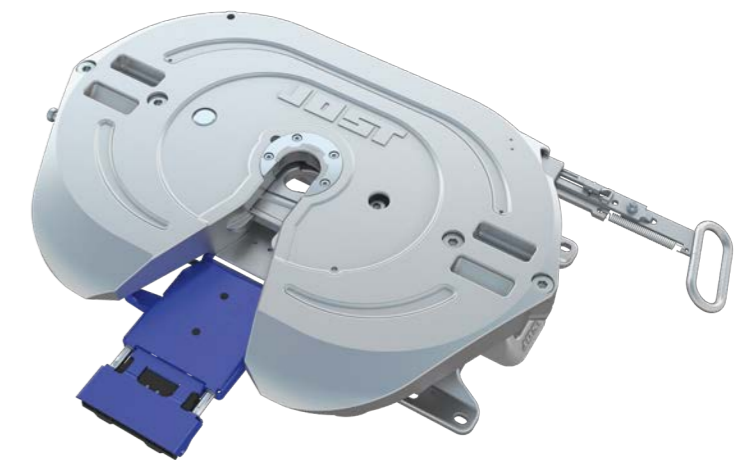


KKS 42 fifth wheel: the mother ship

KKS is based on tried and tested technology and uses JOST's high-quality 2" KKS 42 fifth wheel. Proven to be reliable and practical, KKS 42 is the heart of the revolutionary coupling system, along with the sensors, the KKS Connector, LubeTronic and the pneumatic release valve.

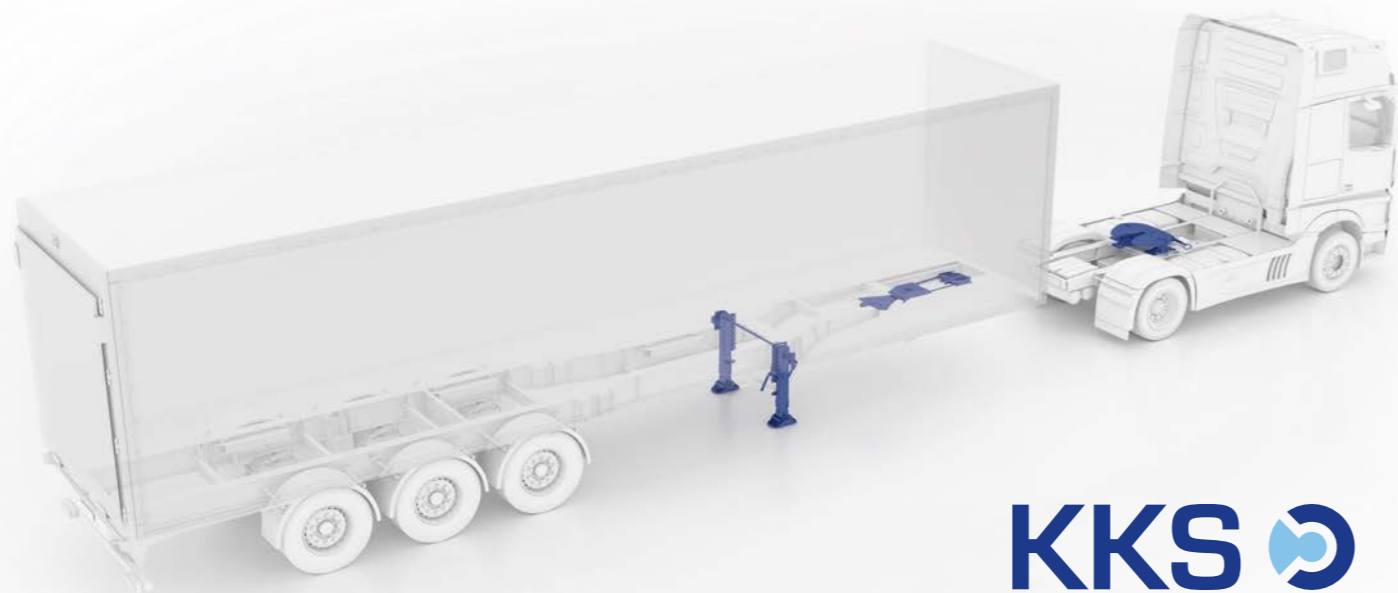
Technical details:

- also available as a low-maintenance coupling with LubeTronic 1Point
- obtainable with all DIN bearing blocks and frame assemblies
- heights from 150 mm
- ECE-R55-01



Interstellar coupling combo – for automatic hitching

KKS is more than one single component. Relying on a unique combination of fifth wheel coupling, connectors, electric landing gear and remote control, all the individual components come together to ensure trailer swapping is fast and safe. Built by the world leader in trailer coupling solutions to exacting standards, KKS is the new weightlessness in trailer changeovers.



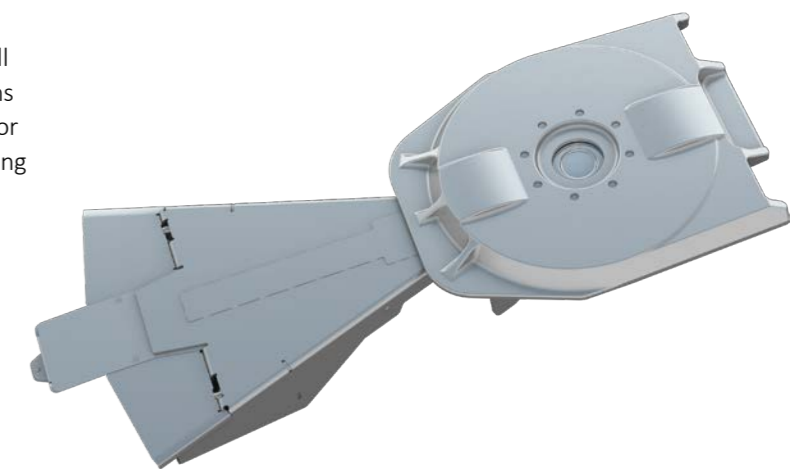
KKS 

Snap-shut intelligence – the KKS Connector

Fitted to the underside of the trailer, the star of the show is JOST's unique KKS Connector. This controls all the mechanical, electrical, and pneumatic connections between the truck and trailer, eliminating the need for vulnerable air, electrics and ABS/EBS spiral lines. During cornering, cable and hose handling takes place in the trailer floor, with resetting taking place automatically once the lorry is travelling in a straight line again.

Technical details:

- high quality JOST 2" king pin
- reliable future-proof and ISO 13044-2 compliant standard plugs for air and electrical connections
- safety tested welding plate
- three standard sensors monitor the king pin, locking mechanism and trailer plate



» ADR certified for use with dangerous goods according to ECE R55-01 and ECE R13.

Beam me up – the KKS Modul E-Drive

Hand cranking is a thing of the past thanks to KKS Modul E-Drive – an electric auxiliary drive that deploys landing legs automatically and is controlled via the KKS remote control. Eliminating the need for hand cranking also offers huge space-saving benefits.

Technical details:

- based on the proven JOST Modul series
- S-Foot as standard and therefore large drift
- maintenance-free, patented, internal gearbox
- can also be manually operated



Get an edge with KKS

Adopting innovative KKS technology not only makes you significantly more efficient but also sharpens your competitive edge and helps future-proof your business. Plus, it's easy to get started since KKS can easily be retrofitted to any lorry or trailer, with KKS-equipped trucks capable of towing all non KKS-equipped trailers. Walk into the new age of logistics one step at a time!

Take advantage of the handy KKS efficiency calculator

Do a quick check now – the benefits speak for themselves kks-futurenow.com.

Make an appointment to talk to us in person

kks@jost-world.com

Intelligence at your fingertips: the KKS remote control

The power to control! Thanks to the intuitive KKS remote control, drivers can manage the entire coupling and uncoupling process, and check up on the status of the fifth wheel and coupling assembly at a glance. As such, changing trailers becomes a simple matter of routine that can be learnt very quickly.

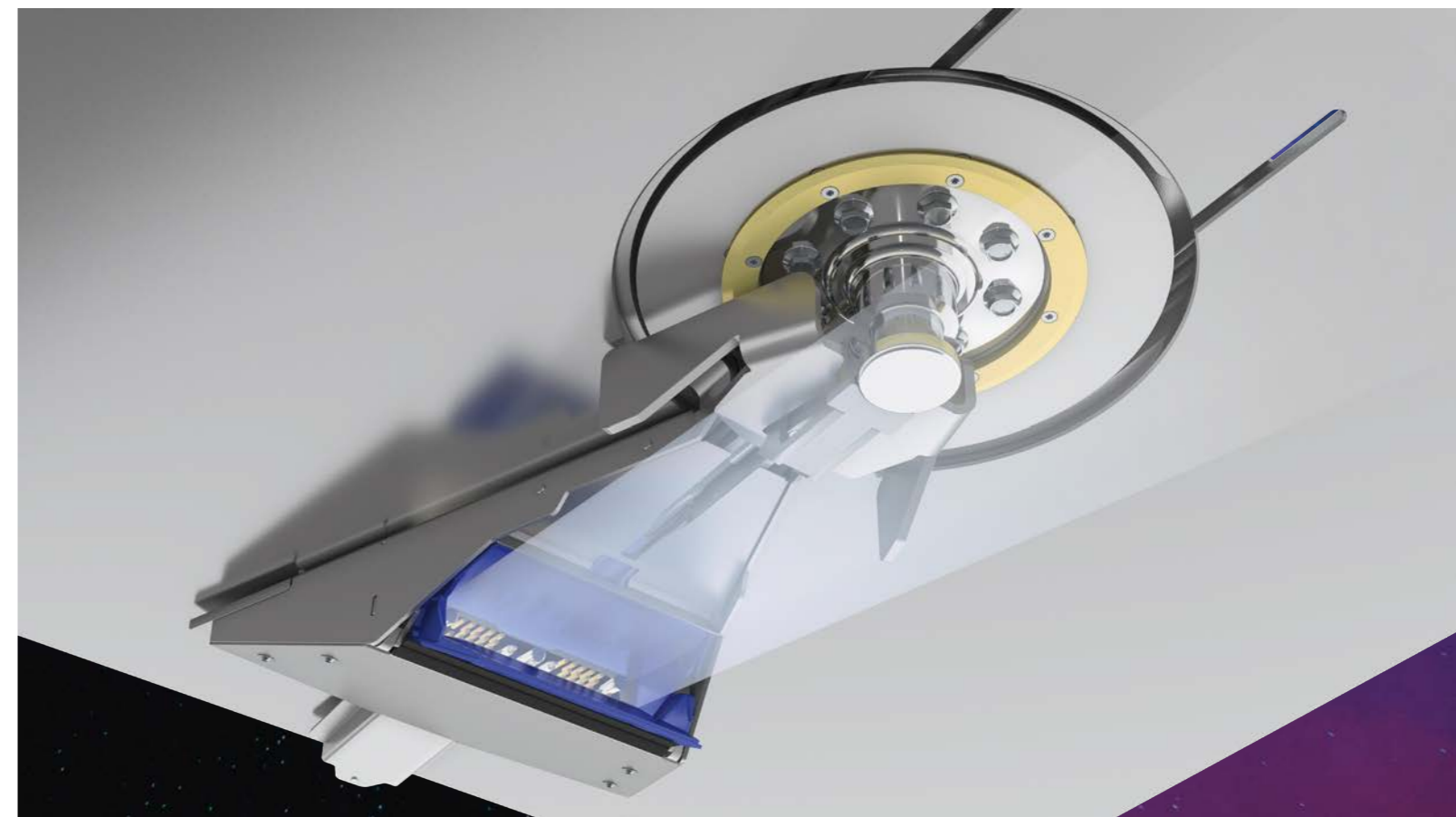
Technical details:

- Remote control of landing gear and fifth wheel coupling
- Push button air and electrics connection
- Real-time status reporting and sensor monitoring
- Intelligent logic for routine trailer changes



» Experience KKS in action – right now or at kks-futurenow.com

» Saving you up to two hours in eight, KKS pays off from six trailer changes a day!



#futurenow
kks-futurenow.com

