

Obstetrics & Gynaecology



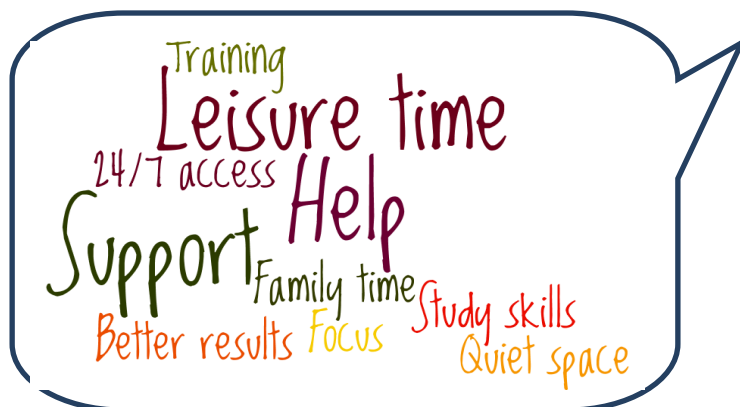
The Trust Libraries

**THE TRUST LIBRARIES
MAIDSTONE ACADEMIC CENTRE
TUNBRIDGE WELLS EDUCATION & TRAINING CENTRE**

So much more than just **books** and **journals**,
your libraries also have
24/7 internet access, study areas, leisure reading,
DVDs and the daily newspaper!

We also have a **Book Club** at Tunbridge Wells Hospital
and **Film Society** at Maidstone Hospital.

Are you studying or simply in need of a quiet space?



**Libraries
help!**



Use your **workplace library**
We are accessible 24/7
Study in peace away from
workplace pressures: **plenty of IT
and desk space here!**

We can **train you** to find the
best information and help with
study skills
(see back page for contact details).

YOUR MTW LIBRARIES
search 'Library' on the Trust intranet for more information.

A selection of popular titles in your specialty area.

For more resources both electronic & in print go to
www.southeastlibrarysearch.nhs.uk

An OpenAthens account will give you access to the e-resources
that are subscribed to both nationally & locally.

Register from an NHS network PC at www.evidence.nhs.uk
select 'Journals and Databases' then 'Register for Athens'.

Please contact us if you have any problems setting up your account or
accessing resources with your login

Print titles:

Obstetrics and gynaecology
by Impey L. 5th ed

Llewellyn-Jones fundamentals of obstetrics and gynaecology
by Llewellyn-Jones D. 10th ed

Part 2 MRCOG: single best answers questions
by Sizer A.

Obstetrics and gynaecology: an evidence-based text for MRCOG
by Luesley D. M. 3rd ed

Handbook of gynecological emergencies
by Rao K. A.

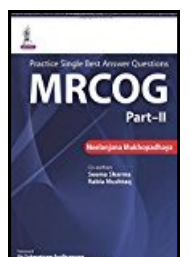
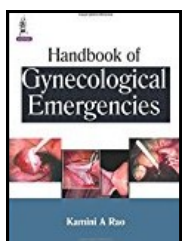
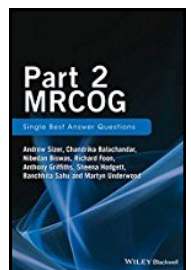
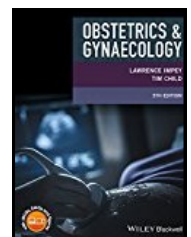
Practice single best answer questions: MRCOG part 2
by Mukhopadhya N.

SBA's and EMQs for the MRCOG part 2
by Datta S.

Revision notes for the MRCOG: a textbook of women's health
by Groves J. 2nd ed

100 cases in obstetrics and gynaecology
by Bottomley C. 2nd ed

Handbook of obstetric medicine
by Nelson-Piercy C. 5th ed



Access these and other electronic resources via our catalogue or NICE Evidence using an NHS OpenAthens account; see previous page for details.

E-journals: Check catalogue entry for individual title holdings.

BJOG: an International Journal of Obstetrics and Gynaecology

Journal of Obstetrics and Gynaecology Canada (JOGC)

Journal of Obstetrics and Gynaecology Research

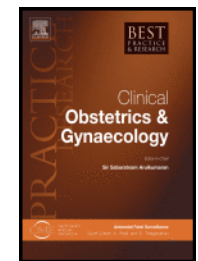
American Journal of Obstetrics and Gynecology

Ultrasound in Obstetrics and Gynecology

Bailliere's Best Practice and Research in Clinical Obstetrics and Gynaecology

Obstetrics and Gynecology

Obstetrics, Gynaecology and Reproductive Medicine



E-books:

Callen's ultrasonography in obstetrics and gynecology
by Callen P. W. 6th ed

Ob/gyn secrets
by Murlarz A. 4th ed

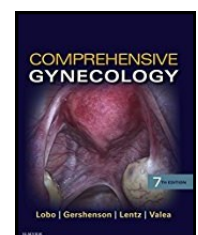
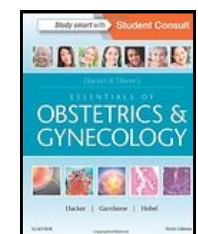
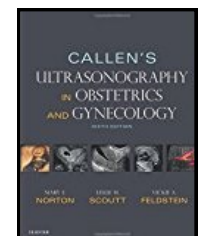
Gynecologic and obstetric pathology
by Crum C. P.

Hacker and Moore's essentials of obstetrics and gynecology
by Hacker N F 6th ed

Obstetrics: normal and problem pregnancies
by Gabbe S G 7th ed

Munro Kerr's operative obstetrics
by Kerr M 12th ed

Comprehensive gynecology 7th ed
by Lobo R A



British National Formulary & British National Formulary for Children (BNF & BNFC) **MOBILE APP**

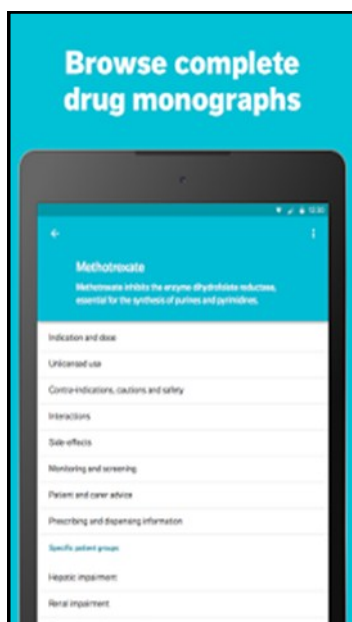
Download the **NEW FREE** combined app
to Android smartphones via the Google Play Store at:
https://play.google.com/store/apps/details?id=com.pharmpress.bnf&hl=en_GB

For iPhone users, the app is available to download via the Apple App Store at:
<https://itunes.apple.com/gb/app/bnf-publications/id1045514038?mt=8>

The app combines both the BNF and BNF for Children into one app

OpenAthens account is no longer required to access the BNF app

If you have any feedback on this app, please let the Trust Library Service know;
you can email us on mtw-tr.library@nhs.net

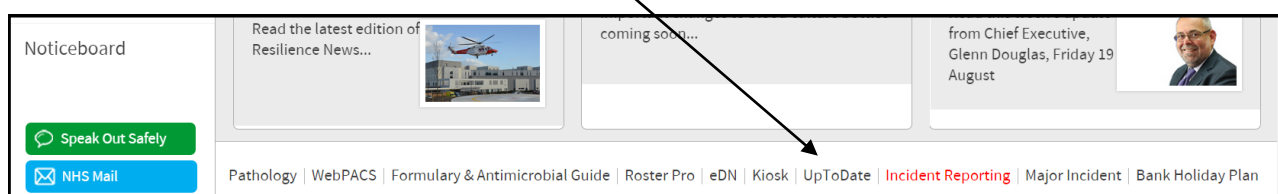


2 ways to access UpToDate

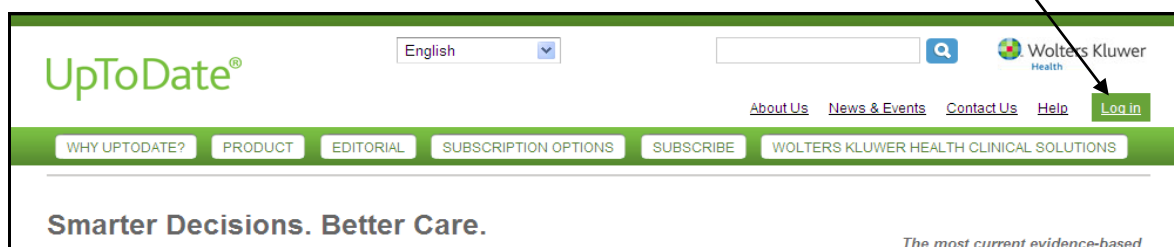
UpToDate is a popular point of care clinical reference tool which gives you access to evidence-based, peer-reviewed information to help with patient care.

MTW staff are using **UpToDate** to help them to answer clinical questions, on average around 1000 times a month.

On-site access: You can access **UpToDate** simply by going to the MTW Trust intranet home page:



Off-site access: Go to www.uptodate.com and log in with your UpToDate Anywhere account from ANYWHERE:



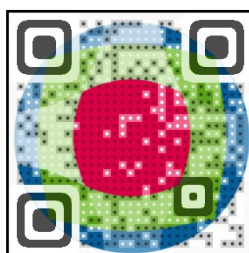
Register for UpToDate[®] Anywhere

Free UpToDate Mobile App for your iOS[®], Android[™] or Windows 8 device

Now UpToDate clinical decision support is as close as your smartphone, tablet, or computer. UpToDate Anywhere gives you evidence-based guidance when and where you need it.

Registration is easy:

- Access UpToDate **from within** the Trust network by clicking on the UpToDate link on the bottom right of the Trust intranet page.
- Click on **Log in/Register** in the top navigation bar of the UpToDate log in page.
- Create a unique user name and password on the UpToDate Anywhere registration page.
- You are now registered and will receive a confirmation email about installing the UpToDate Mobile App.





CURRENT AWARENESS

KnowledgeShare is our new targeted current awareness service which will help to keep **YOU** up to date with the latest high-level evidence in **YOUR** field

How it works: we create your **KnowledgeShare** profile to be as broad or as specific as you need.

For example, you could receive everything published on obstetrics or limit to receive only items related to gestational diabetes

What's included?: guidelines, policies and a wide range of summarised evidence is added **so that you will not be inundated with primary research articles**

KnowledgeShare interest forms are available in the Trust libraries and are also on our website:

www.mtw.nhs.uk/library

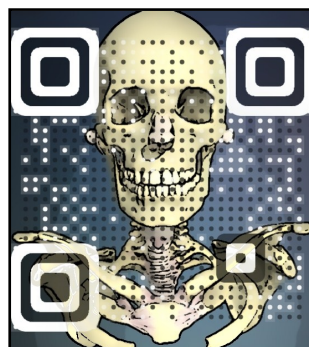
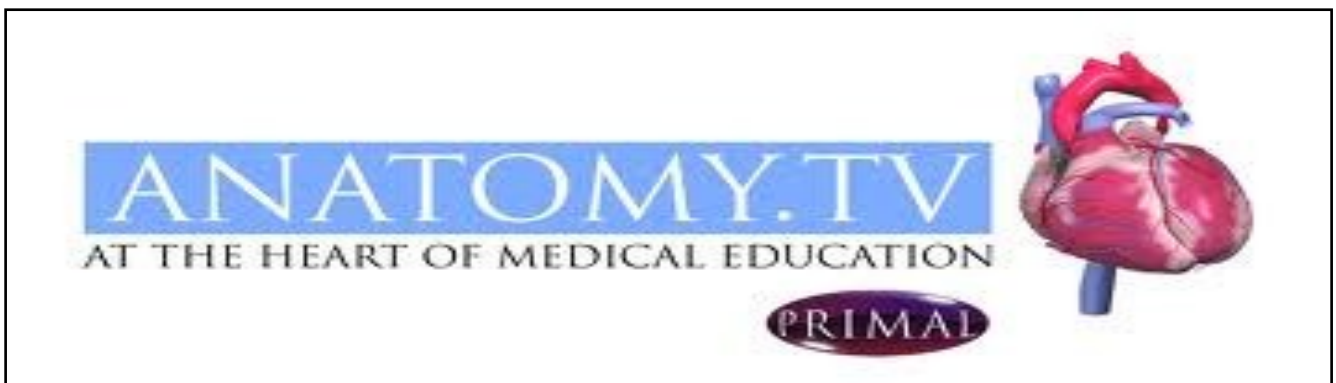
Please email mtw-tr.library@nhs.net or visit one of the Trust libraries for further information

Anatomy TV NOW AVAILABLE

Access to Anatomy TV
is now available to you with your OpenAthens account

Simply go to
<http://www.anatomy.tv>
and log in with your OpenAthens account.
You can also access Anatomy TV via
the home page of our catalogue
www.southeastlibrarysearch.nhs.uk

Log in via OpenAthens to peel back the layers @
www.anatomy.tv



BMJ Case Reports

BMJ Case Reports is an online community that enables junior doctors to take their first steps in having their case reports and research published.

It also contains over 1,500 articles which have been peer reviewed.

Simply visit

<http://casereports.bmj.com>

and log in with your OpenAthens account.

The submission code to submit case reports is **805267**

Please contact the library if you need any help in using this resource.



Quick links

Scan with your Smartphone:



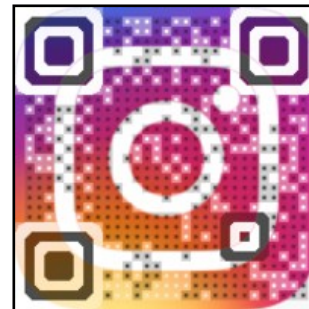
Library Website



Library Catalogue



Library Blog



Instagram



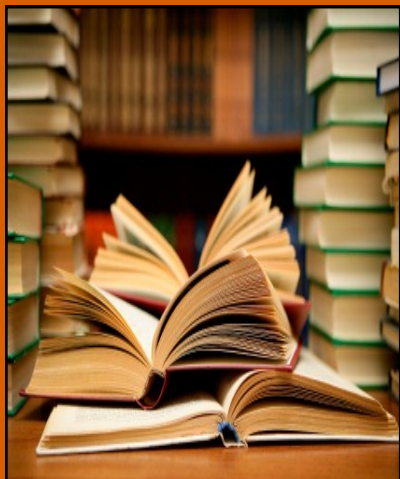
Library Twitter



NICE Evidence

Training

We provide free training in the libraries and in the workplace; do you need help with literature searching, critical appraisal or study skills? Contact Alison Millis :01892 635994/ 07500814120 or email her on alison.millis@nhs.net



Stock suggestions

Please let us know if there any titles that you would like us to consider purchasing, either printed or electronic.

Contact us by telephone or email.

Contact details below.

We look forward to hearing from you.

Library Bulletins: Resources by Specialty

All Bulletins produced so far are available at the following link
<http://www.mtw.nhs.uk/education/library-knowledge-services/databases-and-resources/>

Any feedback welcomed. Contact details below.

Useful information

Maidstone Academic Centre
01622 224647

Opening hours
Mon-Fri 9.00am-5.00pm

Education & Training Centre
Tunbridge Wells
01892 635884/635489

Mon-Fri 8.30am-5.00pm

24/7 access available at both sites

Web: www.mtw.nhs.uk/library

Blog: mtwlibrary.blogspot.com

Email: mtw-tr.library@nhs.net

Online catalogue: www.southeastlibrarysearch.nhs.uk

Follow us on Instagram & Twitter: search for [mtwnhslibrary](#)