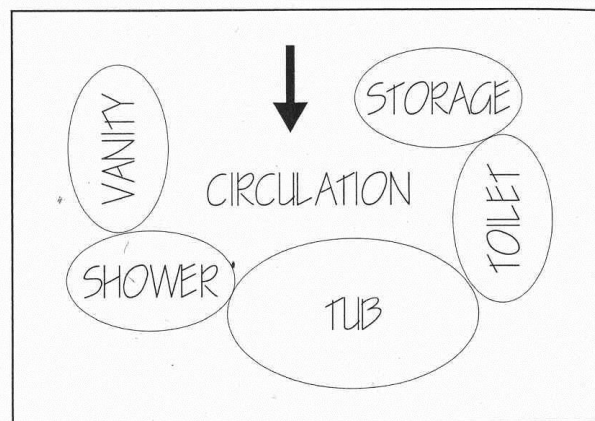


## Bathrooms

- Door:** 36" is best
  - Doors** should not interfere with one another and the safe use of fixtures/cabinets
- Floor space** in FRONT of all fixtures: 30"
- Lavatory spacing:**
  - Single lavatory:** 20" recommended to center of lavatory (15" min.)
  - Double lavatory:** 36" between center of two lavatories
- Shower & tub:**
  - Shower size:** 36" x 36" recommended (30" x 30" min.)
  - Shower door:** open OUTWARD
  - Shower/tub seat:** 15" d (in ADDITION to shower size)
  - Shower/tub controls:** accessible both inside and outside
  - NO STEPS!**
- Toilet/bidet spacing:**
  - Toilet/bidet space:** 18" recommended to center (15" min.)
  - Toilet compartment:** 36" x 66" recommended (30" x 60" min.)
- Storage:** adequate and accessible supplies at point of use
- Accessories:**
  - Mirror** above lavatory @ user's height
  - Toilet paper holder** @ 8"-12" in FRONT of toilet bowl edge
  - Convenient accessories near all fixtures



**Bathroom Bubble Diagram**

*Bath Planning, Beamish et al*

## #2 Door Interference

### CODE Requirement:

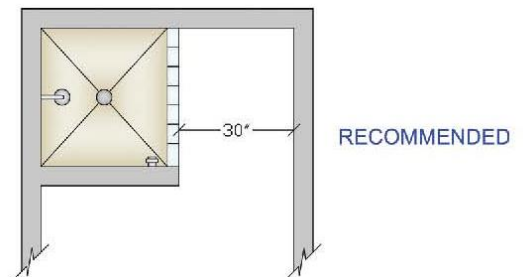
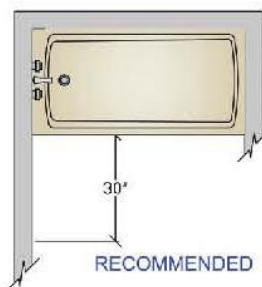
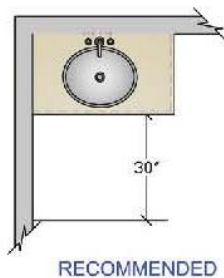
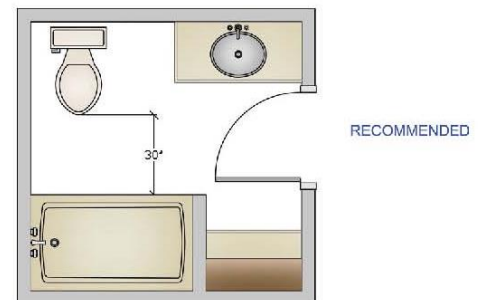
No entry or fixture doors should interfere with one another and/or the safe use of the fixtures or cabinets.



## #4 Clear Space

### Recommended:

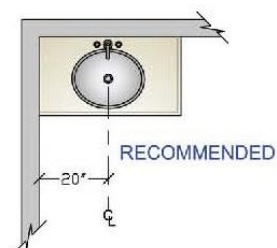
Plan a clear floor space of at least 30" from the front edge of all fixtures (i.e., lavatory, toilet, bidet, tub and shower) to any opposite bath fixture, wall or obstacle.



## #5 Single Lavatory Placement

### Recommended:

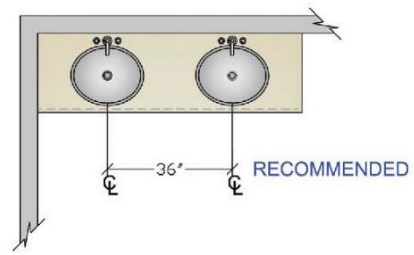
The distance from the centerline of the lavatory to the sidewall/tall obstacle should be at least 20".



## #6 Double Lavatory Placement

### Recommended:

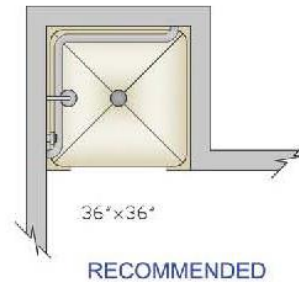
The distance between the centerlines of two lavatories should be at least 36".



## #9 Shower Size

### Recommended:

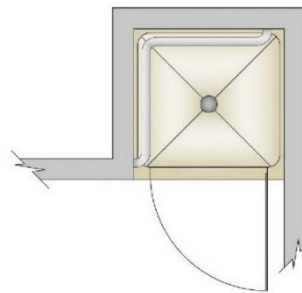
The interior shower size is at least 36" x 36".



## #16 Tub/Shower Door

### CODE Requirement:

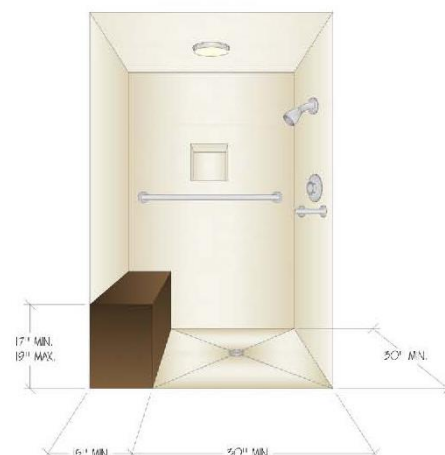
Hinged shower doors shall open outward.



## #12 Shower/Tub Seat

### Recommended:

Plan a seat within the shower that is 17"-19" above the shower floor and 15" deep.

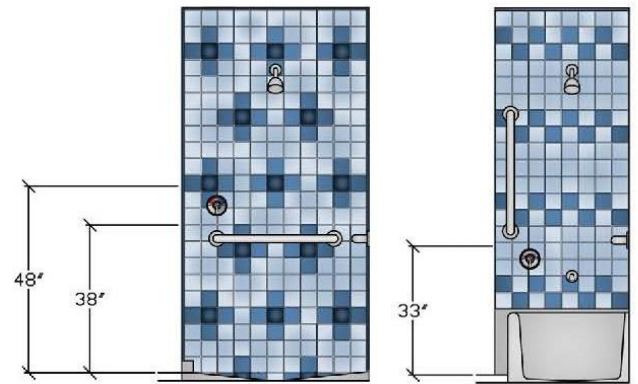


## #10 Shower/Tub Controls

### Recommended:

The shower controls should be accessible from both inside and outside the shower spray and be located between 38" – 48" above the floor depending on user's height.

The tub controls should be accessible from both inside and outside the tub and be located between the rim of the bathtub and 33" above the floor.

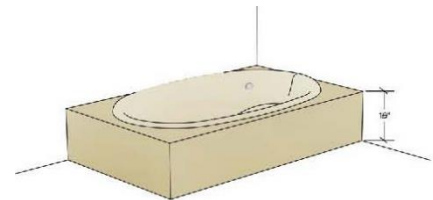


## #17 Steps

### Recommended:

Steps should not be placed outside a tub.

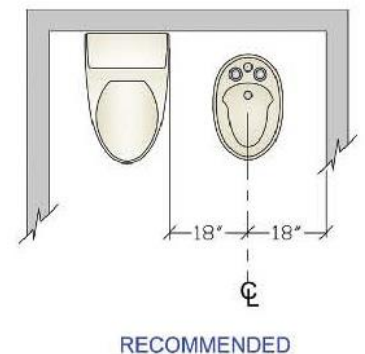
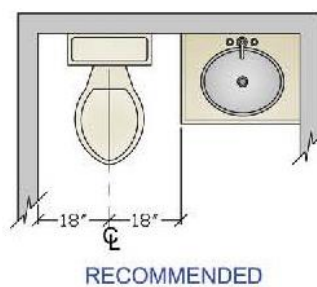
If steps are used, a grab bar/handrail is mandatory.



## #20 Toilet/Bidet Placement

### Recommended:

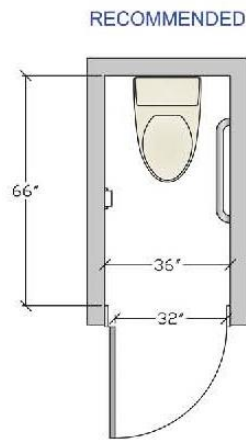
The distance from the centerline of toilet and/or bidet to any bath fixture, wall or other obstacle should be at least 18".



## #21 Toilet Compartment

### Recommended:

The size for a separate toilet compartment should be at least 36" x 66" with a swing-out or pocket door.



## #22 Storage

### Recommended:

Provide adequate, accessible storage for toiletries, bath linens, grooming, and general bathroom supplies at point of use.



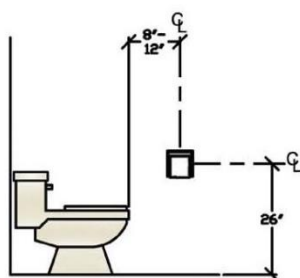
## #23 Accessories

### Recommended:

Place a mirror above or near the lavatory at a height that takes the user's eye height into consideration.

**The toilet paper holder** should be located 8" – 12" in front of the edge of the toilet bowl, centered at 26" above the floor.

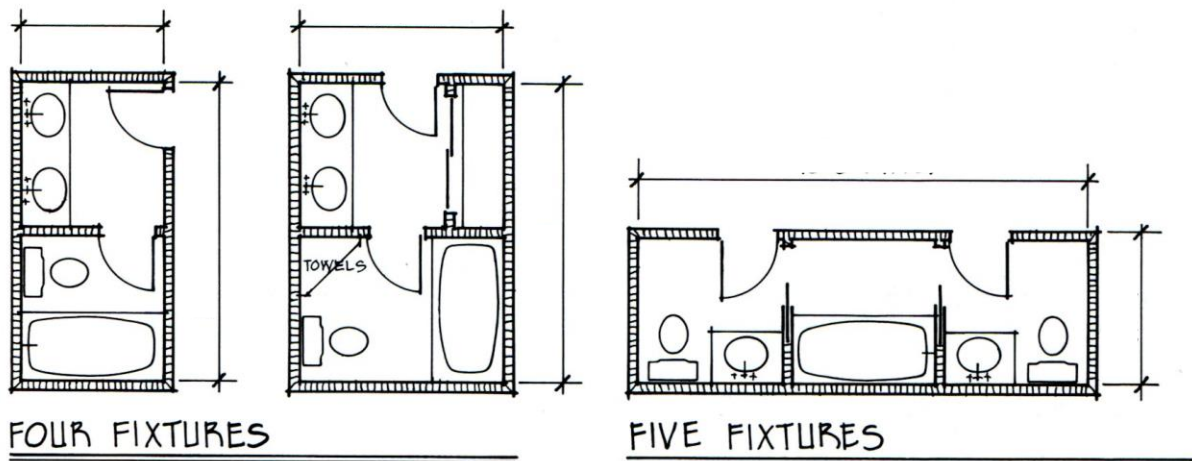
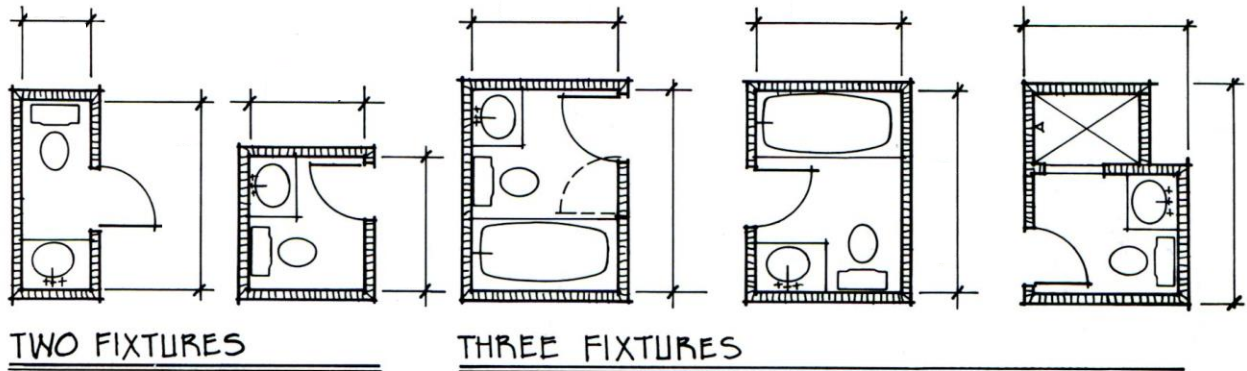
Additional accessories, such as towel holders, soap dishes, etc., should be conveniently located near all bath fixtures.



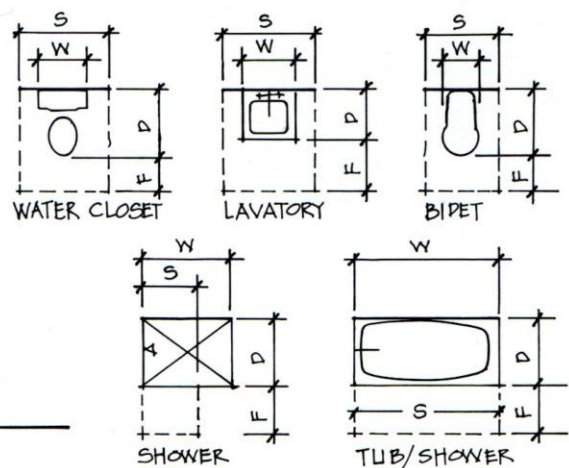
# BATHROOM PLANNING BASICS

## Basic Bathroom Arrangements

Designing Interiors, Kilmer & Kilmer, p. 215 fig. 8.18



FIXTURE	SIZE		CLEARANCE	
	WIDTH(W)	DEPTH(D)	FRONT(F)	SPACE(S)
WATER CLOSET	19-21	27-30		
LAVATORY	17-30	16-22		
TUB/SHOWER	60-72	30-42		
BIDET	14-16	25-28		
SHOWER	32-42	32-48		



DIMENSIONS SHOWN IN INCHES

## Standard Fixture Sizes

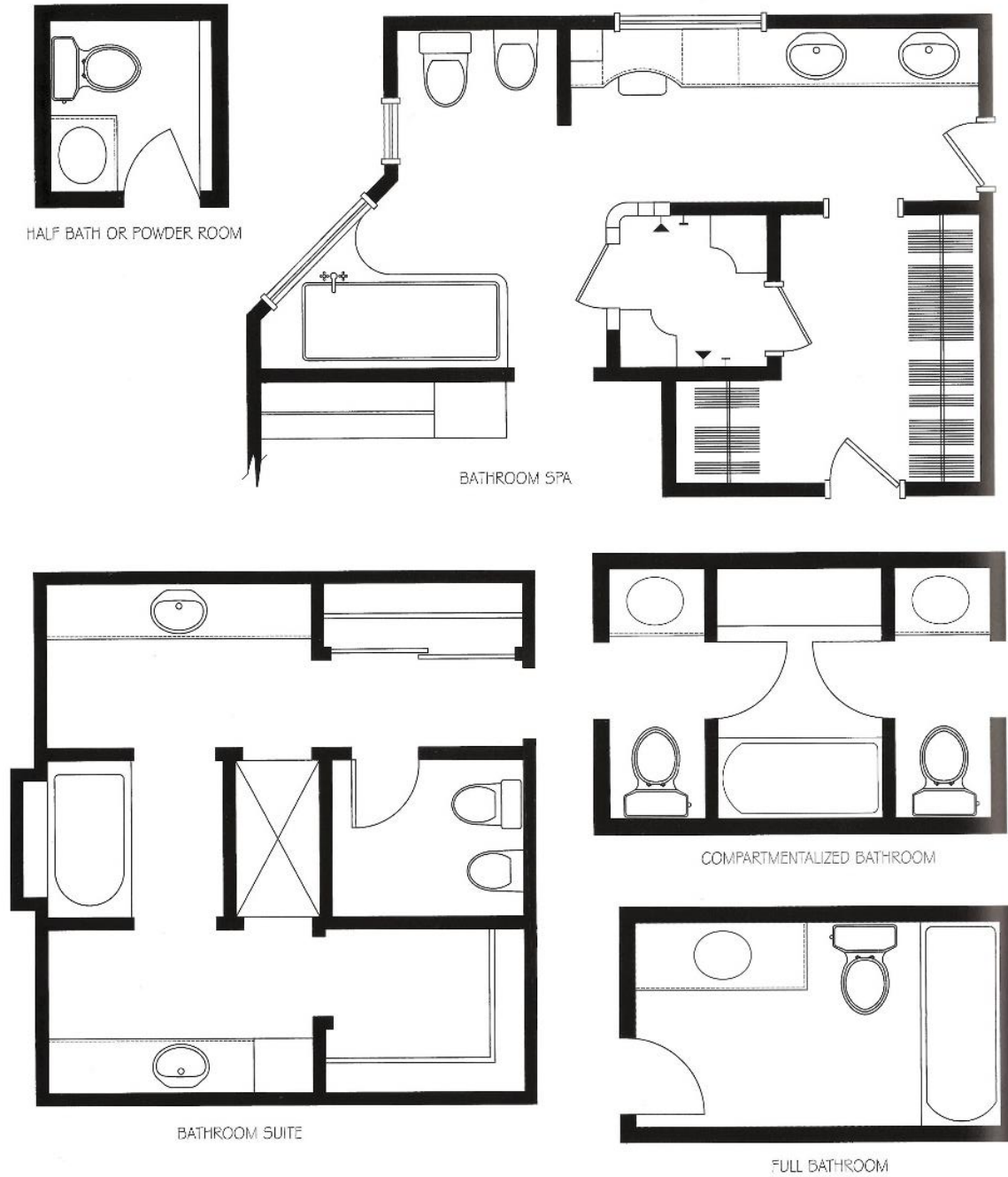
- Water Closet (Toilet): 19" x 28"
  - Shower Stall: 36" x 36"
  - Tub or Tub/Shower Combination: 32" x 60"
  - Corner Tub: 60" x 60"
  - Vanity Counter Depth: 22"
- (NOTE: NOT as deep as kitchen counters!)

# BATHROOM PLANNING BASICS

## Conceptual Bathroom Plans

*Bathroom Planning*, Beamish et al, p. 146

146 BATHROOM PLANNING



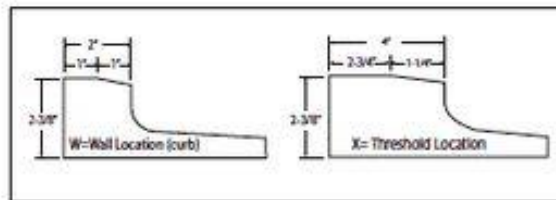
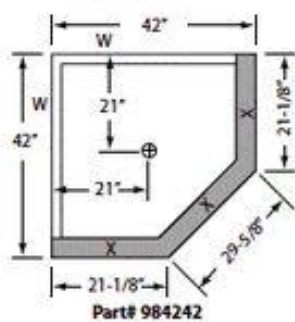
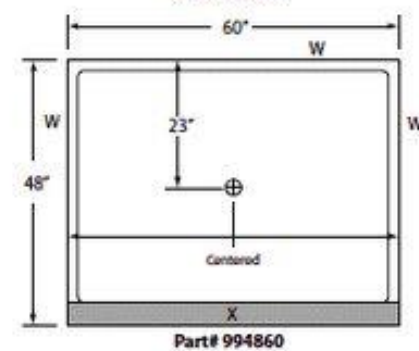
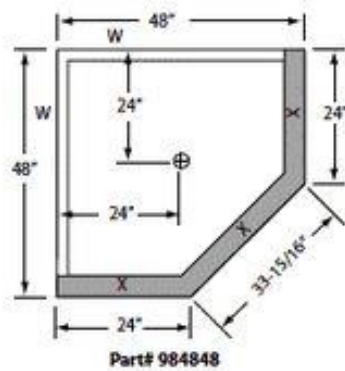
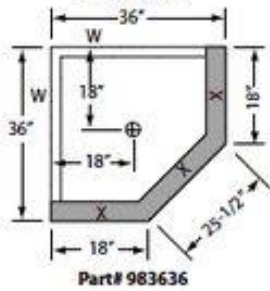
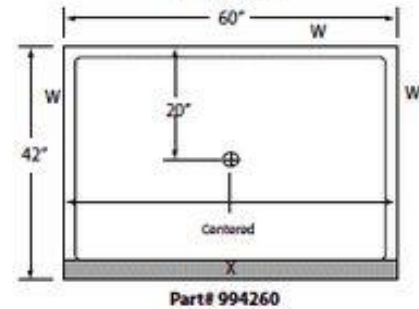
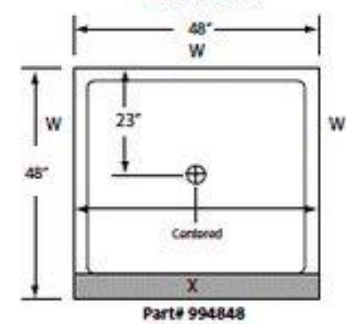
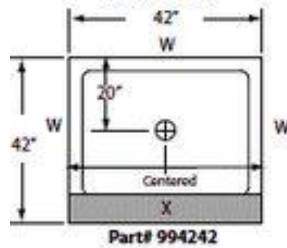
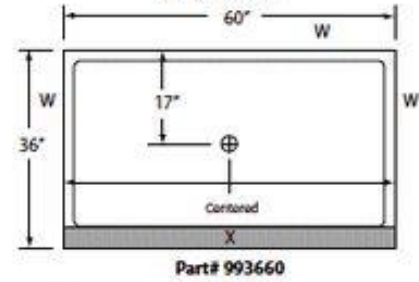
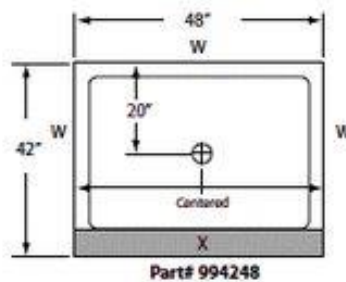
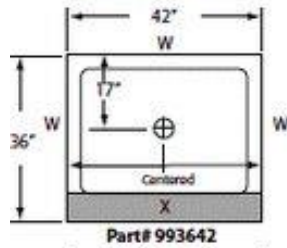
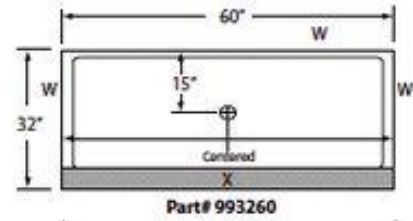
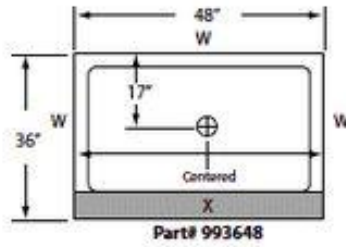
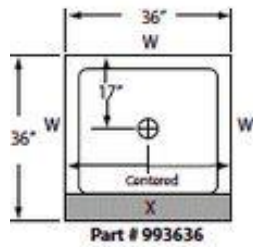
Concept plans not to scale

**FIGURE 6.1** A variety of bathroom types are found in homes today.  
NKBA

# BATHROOM PLANNING BASICS

## Basic Shower Configurations

Salita Shower Systems  
[www.salitashowers.com](http://www.salitashowers.com)





# CLOSET PLANNING BASICS

## Dressing/Clothing Storage

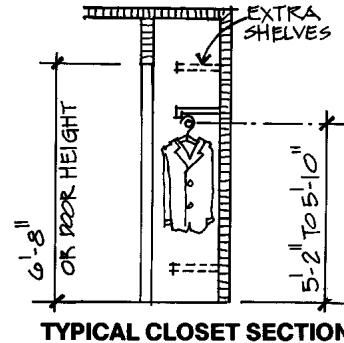
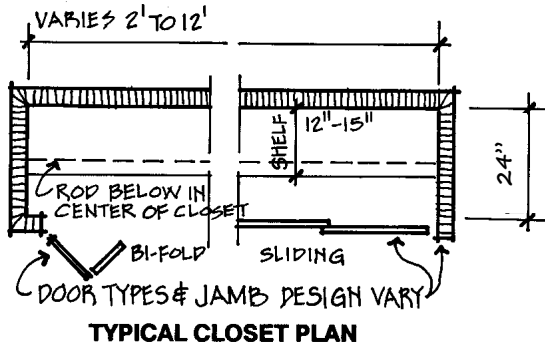
*Designing Interiors*, Kilmer & Kilmer, p. 214 fig. 8.17

- **LINEAR** (reach-in) or **WALK-IN**
- **24" DEEP** minimum clearance for hanging storage!



### Linear Closets

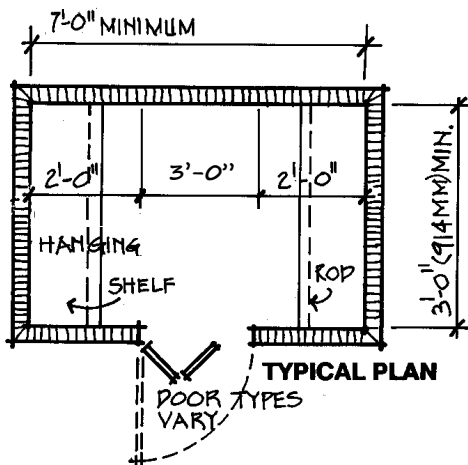
★ Major Consideration: is the full closet accessible?



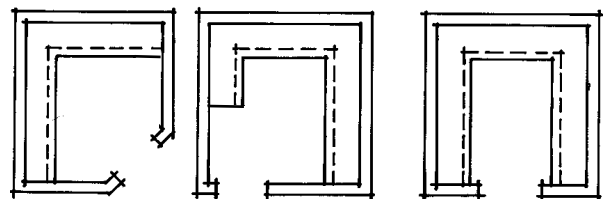
USABLE CLOSET SPACE CAN BE INCREASED IN MANY WAYS.

### Walk-In Closets

★ Major Consideration: are the corners useable?



#### ALTERNATE PLANS



NOTE THAT DOOR LOCATIONS AND SHELF/ROD CONFIGURATIONS MAY VARY. DRAWER AND CUBICLE STORAGE MAY ALSO BE BUILT WITHIN THESE UNITS.