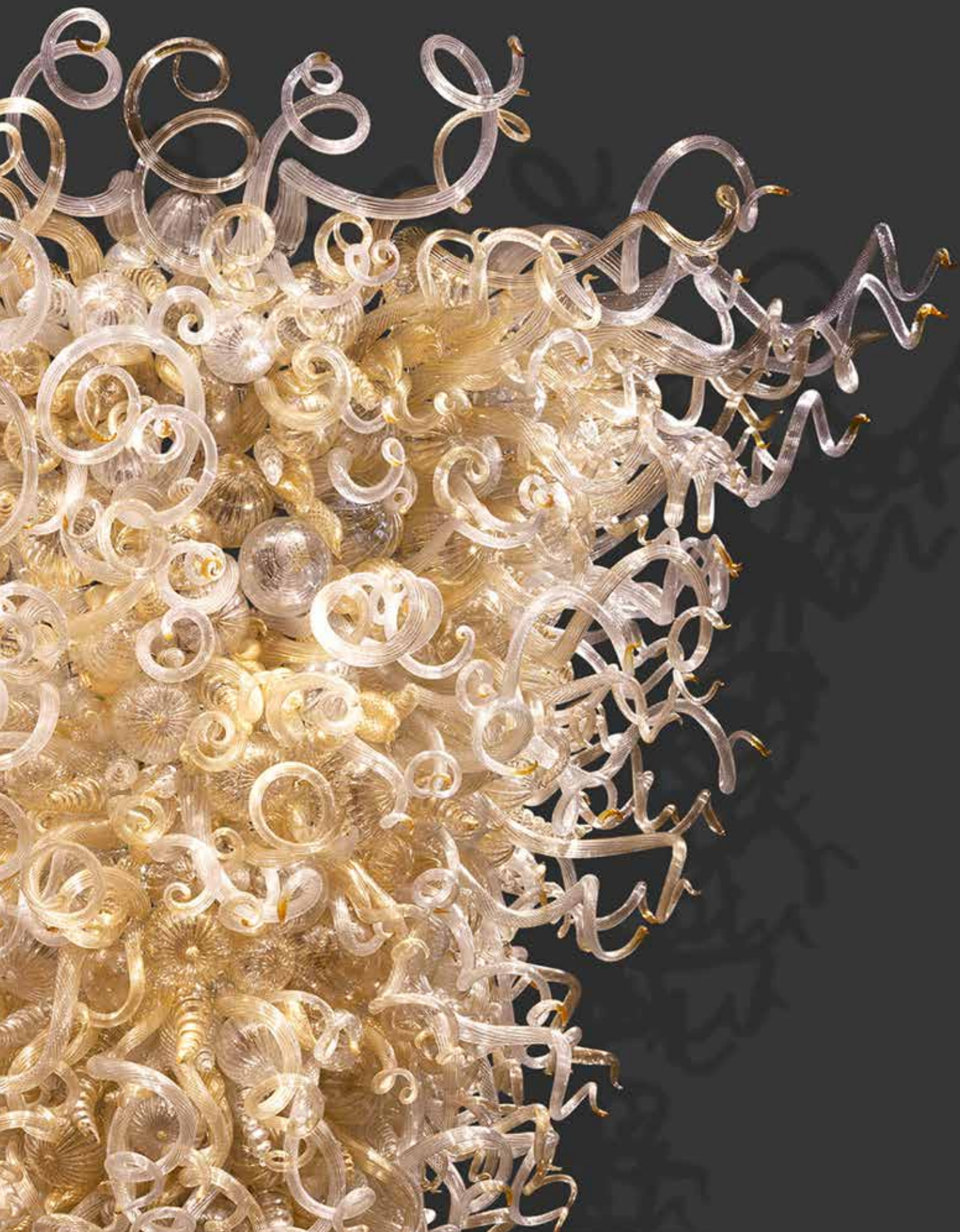


Bonhams



Modern Design | Art

Los Angeles | March 29, 2020



Modern Design | Art

Los Angeles | Sunday March 29, 2020 at 10am

BONHAMS

7601 W. Sunset Boulevard
Los Angeles CA 90046
bonhams.com

PREVIEW

Tuesday, March 24, 12pm – 5pm
Wednesday, March 25, 10am – 5pm
Thursday, March 26, 10am -5pm
Friday, March 27, 10am – 5pm
Saturday, March 28, 12pm – 5pm

SALE NUMBER: 25814

Lots 1 - 379

CATALOG: \$35

LOT SYMBOLS

W - Oversized lots

Y - CITES

BIDS

+1 (323) 850 7500
+1 (323) 850 6090 fax

To bid via the internet please visit
www.bonhams.com/25814

Please note that telephone bids must be submitted no later than 4pm on the day prior to the auction. New bidders must also provide proof of identity and address when submitting bids. Telephone bidding is only available for lots with a low estimate in excess of \$1000.

Please contact client services with any bidding inquiries.

Please see pages 143 to 147 for bidder information including Conditions of Sale, after-sale collection and shipment.

INQUIRIES

Los Angeles

Jason Stein
Director
+1 (323) 436 – 5466
jason.stein@bonhams.com

David Trujillo

Specialist
+1 (323) 436 – 5405
david.trujillo@bonhams.com

Katherine Miller

Administrator
+1 (323) 436 – 5445
katherine.miller@bonhams.com

New York

Benjamin Walker
Global Head of Department
+1 (212) 710 – 1306
benjamin.walker@bonhams.com

Dan Tolson

International Director
+1 (917) 206-1611
dan.tolson@bonhams.com

Misha Sylver

Administrator
+1 (917) 206 -1614
misha.sylver@bonhams.com

ILLUSTRATIONS

Front Cover: Lot 327
Back Cover: Lot 295
Inside front cover: Lot 291
Inside back cover: Lot 18

REGISTRATION IMPORTANT NOTICE

Please note that all customers, irrespective of any previous activity with Bonhams, are required to complete the Bidder Registration Form in advance of the sale. The form can be found at the back of every catalogue and on our website at www.bonhams.com and should be returned by email or post to the specialist department or to the bids department at bids.us@bonhams.com

To bid live online and / or leave internet bids please go to www.bonhams.com/auctions/25814 and click on the Register to bid link at the top left of the page.



California auctions:

© 2020 Bonhams & Butterfields Auctioneers Corp. All rights reserved. Bond No. 57BSBGL0808

Specialists for this auction

Los Angeles



New York



Jason Stein
Director

David Trujillo
Specialist

Katherine Miller
Business Administrator

Benjamin Walker
Global Head of Department

London



Dan Tolson
International Director

Marcus McDonald
Department Director

Gemma Sanders
Head of Department

Duane Kahlhamer
Senior Specialist

Milan



Paris



Benedetta Alpini
Specialist

Catherine Yaiche
Specialist



Modern Design | Art

Lots 1 - 379



1

ROOKWOOD POTTERY

Fishing Boats
1913

decorated by Sallie Coyne, matt glazed porcelain, with firm's marks and artist's initials in the glaze, the back of the frame with label 'Fishing Boats Sally Coyne' and the backing with firm's label

10 1/2 x 8 1/4in (26.6 x 20.9cm)

\$2,000 - 4,000



3

NEWCOMB COLLEGE POTTERY (1895-1940)

Vase

1903

decorated by Browning Coleman, high glaze pottery, with underglazed artist's signature and maker's monogram, dated and numbered 'BB63' with impressed factory marks

height 7in (17.7cm); diameter 4 1/4in (10.7cm)

\$3,000 - 5,000

Provenance

Private Collector, Arizona

JUVENAL SANSO (BORN 1929)

On Tropical Shores

1960s

oil on canvas laid to board, signed in the lower right corner 'SANSO', titled on verso
15 1/2 x 30 1/2in (39.3 x 77.4cm)

\$7,000 - 9,000

This lot comes with a Certificate of Authenticity issued by Fundacion Sansó and shall be included in the upcoming edition of 'Sansó: The Catalogue Raisonné'.



2



4

4 W

ROBERT NATKIN (1930-2010)

Redding View #1

1972

acrylic on canvas, titled, dated and numbered twice '1972 #1' on the stretcher bar
70 x 90in (177.8 x 228.6cm)

\$6,000 - 8,000

5

MARGARET CABLE (1884-1960)

Vase

1921

for University of North Dakota School of Mines, glazed earthenware, stamped 'M. CABLE/ MADE AT UNIVERSITY OF NORTH DAKOTA SCHOOL OF MINES/ N.D. CLAY/ GRAND FORKS, N.D.'

height 4 3/4in (12.1cm); diameter 3 1/8in (8cm)

\$1,000 - 2,000

6

AREQUIPA POTTERY (1911-1918)

Vase

1912

with firm's marks in blue glaze, numbered '569'
height 10 1/4in (26cm); diameter 5 1/4in (13.3cm)

\$5,000 - 7,000

Literature

Leslie Greene Bowman, 'American Arts and Crafts: Virtue in Design', Los Angeles County Museum of Art, 1990, p. 180, variant example illustrated

Timothy J. Andersen, Eudorah M. Moore, Robert W. Winter, 'California Design 1910', Gibbs Smith Publisher, 1980, p. 66, variant technique illustrated



5



6



7



8



9



10

7

FRANCISCO ZÚÑIGA (1912-1998)

Juchiteca

1973

conte crayon on paper, signed and dated lower left 'Zuniga 1973'
19 3/4 x 25 1/2in (50.2 x 64.8cm)

\$2,000 - 3,000

Provenance

Tasende Gallery, La Jolla, CA

Mr. and Mrs. Lowell Blankfort, Bonita, CA

Literature

A. Zúñiga, 'Francisco Zúñiga, Catalogo Razonado', Mexico, 2007, vol. IV, p. 412, no. 2029

8

FRANCISCO ZÚÑIGA (1912-1998)

Desnudo Reclinado

1973

conte crayon on paper, signed and dated lower left 'Zuniga 1973'
19 3/4 x 25 1/2in (50.2 x 64.8cm)

\$2,000 - 3,000

Provenance

Tasende Gallery, La Jolla, CA

9

TIFFANY STUDIOS (1899-1930)

Counterbalance Desk Lamp

circa 1910

patinated bronze, iridized glass, underside of the base stamped '6871
 TIFFANY STUDIOS NEW YORK'
height 15 1/2in (39.3cm); diameter of shade 6 1/2in (16.5cm)

\$2,500 - 3,500

Provenance

Collection of Patricia Nichol Barnes, Evanston, Illinois

10

FREDERICK L. ROEHRIG (1857-1948)

Table Lamp

circa 1905

wrought iron, mica, unmarked

height overall 15 1/2in (39.3cm); width of shade 6 3/4in (17.1cm)

\$1,000 - 2,000

Provenance:

Arthur Jerome Eddy House, Pasadena, California

Collection of Robert Winter, Pasadena, California

Literature:

Timothy J. Andersen, Eudorah M. Moore, Robert W. Winter, 'California Design 1910', Gibbs Smith Publisher, 1980, p. 85



11

11

FRANCISCO ZÚÑIGA (1912-1998)

Woman in Three Poses

1978

conte crayon and pastel on paper, signed and dated lower right
'Zuniga 1978'

19 1/2 x 27 3/4in (49.5 x 70.5cm)

\$2,000 - 3,000

Literature

A. Zúñiga, 'Francisco Zúñiga, Catalogo Razonado', Mexico, 2007, vol. IV, no. 2682

12 W

PAUL HINDMAN (ACTIVE CIRCA 1930-1980)

Partners Desk

post 1939

mixed wood

height 55 1/2in (140.9cm); width 41 1/4in (104.7cm); depth 37

1/2in (95.2cm)

\$2,000 - 3,000

Paul Hindman worked for Thomas Molesworth's Shoshone Furniture Company since being founded in 1931. Hindman left the Shoshone Furniture Company in 1939 to start his own furniture firm, Wyoming Furniture Company.



12



13 W

AMERICAN ARTS & CRAFTS

Tennyson Window

1923

for the First Presbyterian Church of Santa Monica, leaded glass
height 60 1/4in (153cm); width 42in (106.6cm); depth 1/2in (1.2cm)

\$30,000 - 50,000

Provenance

First Presbyterian Church of Santa Monica, Santa Monica, California,
1923



14 W

AMERICAN ARTS & CRAFTS

Woodland Window

1923

for the First Presbyterian Church of Santa Monica, leaded glass
height 60in (152.4cm); width 42in (106.6cm); depth 1/2in (1.2cm)

\$30,000 - 50,000

Provenance

First Presbyterian Church of Santa Monica, Santa Monica,
California, 1923

These two windows were originally installed circa 1923 at the First Presbyterian Church of Santa Monica, located on the corner of 2nd Street and Arizona Avenue. Two of seven windows installed at the time, the total bill for all seven came to \$10,000, a considerable sum for the church.

The 'Tennyson Window' is so-named for an inscription from Alfred Lord Tennyson's poem *Crossing the Bar* that was located at the foot of the window: 'Sunset and evening star and one clear call for me, and may there be no moaning at the bar when I put out to sea.' At once bright and inviting yet meditative, the window exists in a transitional space, from day to night, light to dark.

Equally stunning is the 'Woodland Window', a work aptly named for the gentle landscape it depicts. Blooming irises gather in the foreground, their vibrant petals not a simple shade of purple and yellow, but a kaleidoscope of dark blue, vivid magenta, ember orange and flashing yellow. The same shades paint the dusky sky while broad tree trunks anchor the composition. Although subtly distinct in subject matter and palette, each window provides a sense of calm through natural beauty, acknowledging the outward world while looking to inner contemplation.



15

15

TIFFANY STUDIOS (1899-1930)

Acorn Table Lamp

circa 1910

leaded glass, patinated bronze, shade stamped 'TIFFANY STUDIOS NEW YORK 7435', base stamped 'TIFFANY STUDIOS NEW YORK 533' to underside

height 21 1/4in (54cm); diameter of shade 15 7/8in (40.5cm)

\$8,000 - 12,000

16

TIFFANY STUDIOS (1899-1930)

Rare Vase

1898-1903

enameled copper, stamped 'SG97 LCT'

height 8in (20.3cm); diameter 3in (7.62cm)

\$10,000 - 15,000

17

No lot



16



18

TIFFANY STUDIOS (1899-1930)

Black-Eyed Susan Table Lamp

circa 1910

patinated bronze, leaded glass, shade stamped 'TIFFANY STUDIOS
NEW YORK 1447-19'

height 23in (58.4cm); diameter of shade 16in (40.6cm)

\$20,000 - 30,000

Provenance

Private Collection, Chicago, IL, circa 1910

Sotheby's, New York, 'Important Design',

7 June 2016, Lot 39

Macklowe Gallery, New York



19

19
ÉMILE GALLÉ (1846-1904)

Crocus Vase
circa 1900
cameo glass, signed 'Gallé'
height 8 1/2in (22cm)

\$2,000 - 3,000

Provenance:
Private Collection, Northern California



20

20
LOETZ (1890-1920)

Vase
circa 1900
iridescent glass, unmarked
height 6 3/4in (17.1cm); diameter 4 1/4in (10.7cm)

\$1,500 - 2,500



21

21 W

ÉMILE GALLÉ (1846-1904)

Companion Pair of Gueridons
circa 1900

marquetry walnut and mahogany, each signed in marquetry 'Gallé'
height 30 1/2in (77.4cm); width 31 3/4in (80.6cm); depth 20 1/4in (51.4cm)

\$2,000 - 3,000

22

DAUM FRÈRES (FOUNDED 1878)

Libellules et Nénuphars Vase
circa 1900

internally decorated, overlaid with vitrified and acid-etched waterlilies
and dragonflies, each dragonfly applied and wheel carved, cameo
mark 'DAUM NANCY' with the Cross of Lorraine
height 9 1/4in (23.5cm); diameter 6in (15cm)

\$18,000 - 25,000

Provenance

Private Collection, Paris, acquired circa 1920
Thence by descent



22



23

23 W

LOUIS MAJORELLE (1859-1926)

Chicoree Sideboard

circa 1900

carved walnut with marquetry inlay, inset stone top
height 58in (147.3cm); width 62in (157.4cm); depth 17in (43.1cm)

\$5,000 - 7,000

24 W

LOUIS MAJORELLE (1859-1926)

Chicoree Dining Set

circa 1900

carved walnut, comprising a dining table and six side chairs

height of table 28in (71.1cm); width 61in (154.9cm); depth 51in (129.5cm); height of chairs 40in (101.6cm); width 17in (43.1cm); depth 21in (53.3cm)

\$6,000 - 8,000

The dining table in the offered lot is accompanied by three leaves of later production.



24



25 W

LOUIS MAJORELLE (1859-1926)

Chicoree Buffet

circa 1900

carved walnut with marquetry inlay, patinated bronze, glass

height 72in (182.8cm); width 87in (220.9cm); depth 22in (55.8cm)

\$7,000 - 9,000



26



27



29



28



26

LECOULTRE COMPANY (FOUNDED 1866)

Desk Clock

circa 1935

patinated bronze, glass, the underside stamped '9970 LeCoultre Co SWISS' and incised 'a2130 F115755', the exterior of the movement stamped 'LeCoultre SWISS' height 8in (20.3cm); diameter 7in (17.7cm); depth 2in (5cm)

\$1,000 - 2,000

Provenance

Private Collection, California

27

OTTO PRUTSCHER (1880-1949)

Tea and Coffee Service

circa 1920

executed by J. C. Klinkosch, comprising teapot, coffee pot, sugar bowl, creamer, tray, silver, later fruitwood handles, each stamped with Austrian assay marks and '800' coffee pot height 7 3/4in (19.5cm); teapot height 6 1/2in (16.5cm); sugar bowl height 3in (7.5cm); creamer height 4in (10cm); tray width 17in (43cm)

\$6,000 - 9,000

Klinkosch produced a number of designs for both Josef Hoffmann and Otto Pruscher.

28

ARCHIBALD KNOX (1864-1933)

Set of Dessert Spoons and Forks

circa 1929

for Liberty & Co., sterling silver, enamel, comprising six dessert spoons and six pastry forks, total weighable silver approximately 6.35oz troy each with maker's hallmarks and assay marks, the spoons and forks stamped 1929 and 1933 respectively (12)

\$1,000 - 1,500

29

RENÉ LALIQUE (1860-1945)

Sirenes Clock

designed 1928

opalescent, frosted and polished glass, molded 'R. LALIQUE'

4 1/2 x 4 1/2in (11.5cm x 11.5cm)

\$1,500 - 2,000

30 W

AUGUST UNGETHÜM (1864-1911)

Cabinet

1904-1906

mahogany, glass, marble, brass

height 78 1/2in (200cm); width 43 1/2in (110cm); depth 22in (56cm)

\$8,000 - 12,000



30

31 W

GLASGOW SCHOOL

Pair of Hall Chairs

early 20th Century

inlaid mahogany, velvet upholstery, patinated metal studs

height 46 1/2in (117.5cm); width 18in (46cm); depth 18in (46cm)

\$1,500 - 2,500



31



32

32 W

PAUL T. FRANKL (1886-1958)

Pair of Skyscraper Bookcases

circa 1930

designed 1926, for Frankl Galleries, lacquered wood
each height 86 1/4in (219cm); width 39in (99cm); depth
11 3/4in (30cm)

\$12,000 - 18,000

Bonhams would like to thank Christopher Long for his assistance in the cataloguing of this lot.

Provenance

Seymour Stein Collection, New York

Literature

Paul T. Frankl, 'New Dimensions', New York, 1928, p. 22-24 (for related models)

Christopher Long, 'Paul T. Frankl and Modern American Design', New Haven, 2007, pp. 67, 74

33

CARLO SCARPA (1906-1978)

Corroso Bowl

1936

acid treated and iridized glass, acid-etched 'venini murano
MADE IN ITALY'

height 3in (7.6cm); diameter 5in (12.7cm)

\$1,500 - 2,000

Provenance

Private Collection, California



33

34

GEORGE SAKIER (1897-1988)

Group of Six Vases

circa 1930

for Fostoria Glass Company, mold blown glass

height of tallest 13in (33cm)

\$3,000 - 5,000

35 W

JOAN MIRÓ (1893-1983)

Les Geants I (D. 276)

1960

aquatint, signed in pencil in the lower right corner 'Miro',
the lower left corner numbered in pencil '19/50'

23 x 36in (58.4 x 91.4cm)

sheet 29 5/8in x 41 1/4in (74.9cm x 104.1cm)

\$2,000 - 3,000

Provenance

Estate of Siri Eliason

36 W

JOAN MIRÓ (1893-1983)

La Chevelure de Berenice I (D. 354)

1963

etching with color aquatint, signed in pencil in lower right
corner 'Miro', numbered in the lower left corner '50/75'

18 1/2in x 27in (47 x 68.6cm)

sheet 25in x 35 1/2in (63.5cm x 90.1cm)

\$1,500 - 2,000

Provenance

Estate of Siri Eliason



34



35



36



37

37

ATELIER POMONE (ESTABLISHED 1922)

Lidded Jar

circa 1925

for Bon Marché, edition by Samara, glazed ceramic, stamped
height 9 3/4in (25.5cm); diameter 8in (20.3cm)

\$3,000 - 5,000

Exhibition

Pomone Pavilion, Paul Follot, International Exhibition of Modern
Decorative and Industrial Arts, Paris 1925, for perhaps this or a similar
version

Literature

Maurice Dufrene, 'Authentic Art Deco Interiors from the 1925 Paris
Exhibition', Antique Collectors Club, 1989. Pl. 8.

38 W

PAUL T. FRANKL (1886-1958)

Skyscraper Bookcase

circa 1930

designed 1926, for Frankl Galleries, lacquered wood
height 86 1/4in (219cm); width 39in (99cm); depth 11 3/4in (30cm)

\$6,000 - 8,000

Provenance

Seymour Stein Collection, New York

Literature

Paul T. Frankl, 'New Dimensions', New York, 1928, p. 22-24 (for
related models)

Christopher Long, 'Paul T. Frankl and Modern American Design',
New Haven, 2007, p. 67, 74



38



39

39

WARREN TELECHRON COMPANY (FOUNDED 1912)

Group of Four Electroalarm Table Clocks

1929-1931

bakelite, gilt metal, glass, comprising two cream, one brown and one green, each marked Telechron on the faces
height 7 3/4in (19.6cm); width 6in (15.24cm); depth 3 3/4in (9.5cm)

\$800 - 1,200

Provenance

Collection of Johnny Hubbard



40

40

EMERSON RADIO AND PHONOGRAPH CORPORATION (FOUNDED 1922)

Group of Five 540 and 540A Radios

1947

two cream plaskon cases with black dials, two green plaskon cases with black dials, one brown plaskon case with black dials, each stamped 'Emerson'
height 4 3/4in (12cm); width 6 1/2in (16.5cm); depth 4 1/4in (10.7cm)

\$1,000 - 1,500

Provenance

Collection of Johnny Hubbard

41

**GENERAL TELEVISION AND RADIO CORP.
(FOUNDED 1932)**

Group of Three Radios
1940 and 1947

comprising two 591 catalin radios in yellow and deep red with off white grille, handle, dial bezel and knobs; together with a green Tenite 5A5 radio in the same style, dials marked 'General Television'

height 7 1/4in (18.41cm); width 8 3/4in (22.22cm); depth 5 1/2in (13.97cm)

\$2,000 - 4,000

Literature

John Sideli, 'Classic Plastic Radios of the 1930s and 1940s', E.P. Dutton, 1990, p. 101 (model variant illustrated)

Provenance

Collection of Johnny Hubbard



41

42

**FADA RADIO AND ELECTRIC CO. INC.
(FOUNDED 1920)**

Three Bullett 115 Streamliner Radios; "The All American" 189
1940

yellow catalin case with red handle, dial bezel, and knobs,
onyx catalin case with orange handle, dial bezel, and knobs,
maroon catalin case with orange handle, dial bezel and knobs, all dials marked 'FADA',
height 6 1/2in (16.5cm); width 10 1/2in (26.6cm); depth 6in (15.2cm)

\$2,800 - 3,000

Literature

John Sideli, 'Classic Plastic Radios of the 1930s and 1940s', E.P. Dutton, 1990, p. 69 (model illustrated)

Provenance

Collection of Johnny Hubbard



42

43

**FADA RADIO AND ELECTRIC CO. INC.
(FOUNDED 1920)**

Bullet Streamliner Radio
1940

yellow catalin case, red gumdrop knobs and blue dial bezel,
with FADA label on face

height 6 1/4in (16cm); width 10in (25.5cm); depth 5 1/2in (14cm)

\$1,500 - 2,500

Although the original All American 189 paper label is not present on base of case, the offered lot is in the Red, White and Blue style of the All American released in 1942 as a patriotic reaction to Pearl Harbor.

Literature

John Sideli, 'Classic Plastic Radios of the 1930s and 1940s', E.P. Dutton, 1990, p. 69-70 (model illustrated)

Provenance

Collection of Johnny Hubbard



43



44

44
EMERSON RADIO & PHONOGRAPH CORPORATION (FOUNDED 1922)
 Cathedral Radio
 1937
 green catalin with matching knobs, cloth grille, with partial Emerson decal
height 10in (25.4cm); width 7 1/4in (18.4cm); depth 6in (15.24cm)

\$1,500 - 2,500

Literature
 John Sideli, 'Classic Plastic Radios of the 1930s and 1940s', E.P. Dutton, 1990, p. 46-47 (model illustrated)

Provenance
 Collection of Johnny Hubbard



45

45
EMERSON RADIO AND PHONOGRAPH CORPORATION (FOUNDED 1922)
 Cathedral Radio
 1938
 yellow catalin case with maroon knobs and grille, with Emerson decal
height 10in (25.4cm); width 7 1/4in (18.4cm); depth 5 3/4in (14.6cm)

\$1,000 - 1,500

Provenance
 Collection of Johnny Hubbard



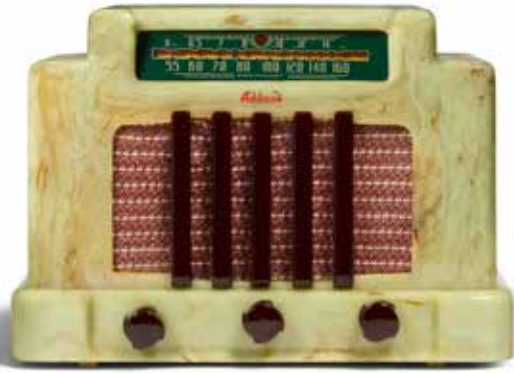
46

46
INTERNATIONAL RADIO CORPORATION (1931-1940)
 Kadette K 25 Clockette
 1937
 green catalin with matching knobs, brass, metal mesh, with KADETTE decal on face
height 8 1/4in (20.9cm); width 7 3/4in (19.8cm); depth 5 1/2in (14cm)

\$2,500 - 3,500

Literature
 John Sideli, 'Classic Plastic Radios of the 1930s and 1940s', E.P. Dutton, 1990, p. 103 (model illustrated)

Provenance
 Collection of Johnny Hubbard



47



48

47

ADDISON INDUSTRIES

Two Courthouse Radios

1940

marbled green catalin case with brown grille and knobs, marbled
maroon catalin case with yellow grille and knobs, each with Addison
decal

height 8 3/4in (22.2cm); width 12 3/4in (32.3cm); depth 7 1/4in
(18.4cm)

\$1,800 - 2,800

Provenance

Collection of Johnny Hubbard

48

MOTOROLA (FOUNDED 1928)

Group of Two 52 Radios

1939

marbled green and yellow catalin case with matching knobs,
maroon and yellow catalin case with matching knobs, louvered grille
height 5 3/4in (14.6cm); width 9 1/4in (23.4cm); depth 5in (12.7cm)

\$2,000 - 3,000

Provenance

Collection of Johnny Hubbard

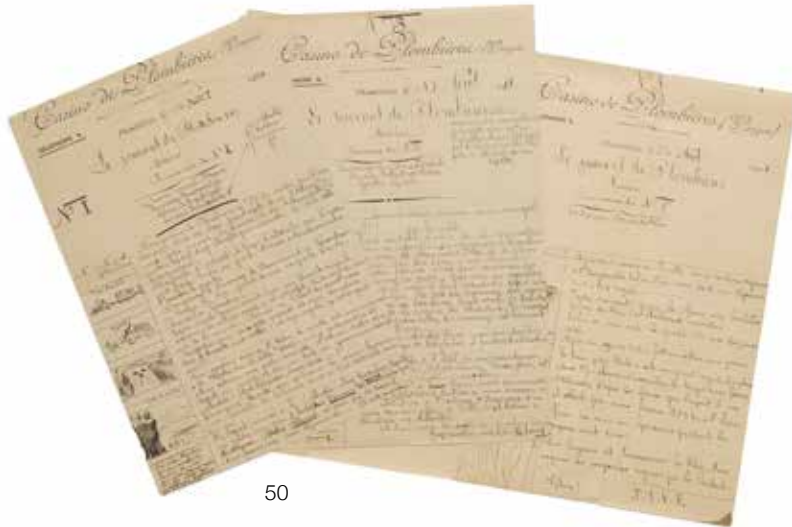


49

49
RAYMOND LOEWY (1893-1986)
 Loraymo IV
 1954
 gouache and pencil on paper, initialed, titled, dated
 and inscribed illegibly lower right 'Loraymo IV, RL 1954'
 11 1/2 x 21 3/4in (29.3 x 55.3cm)

\$1,200 - 1,800

Provenance
 Collection of Raymond Loewy, Monte Carlo



50

50
RAYMOND LOEWY (1893-1986)
 Journal Entries and Sketches
 1906
 ink on paper from the Casino de Plombières
 8 1/4 x 5 1/2in (21 x 14in)

\$1,500 - 2,000

Provenance
 Raymond Loewy, Monte Carlo



51

51
RAYMOND LOEWY (1893-1986)
 A Group of Four Architectural Renderings of the
 Shoppers Mart
 gouache and ink on paper, each with Raymond
 Loewy Associates label on lower right mat
 largest 15 x 17 1/2in (38.2 x 44.5cm)

\$2,000 - 4,000

Provenance
 Raymond Loewy, Monte Carlo

52

AMERICAN

Group of Three United States Passports for Raymond Loewy
1947, 1962 and 1983
paper, each signed 'Raymond Loewy', inscribed, stamped
extensively with travel dates and with a photograph of Loewy
largest 6 x 4in (15 x 10cm)

\$800 - 1,200

Provenance

Raymond Loewy, Monte Carlo



52

53

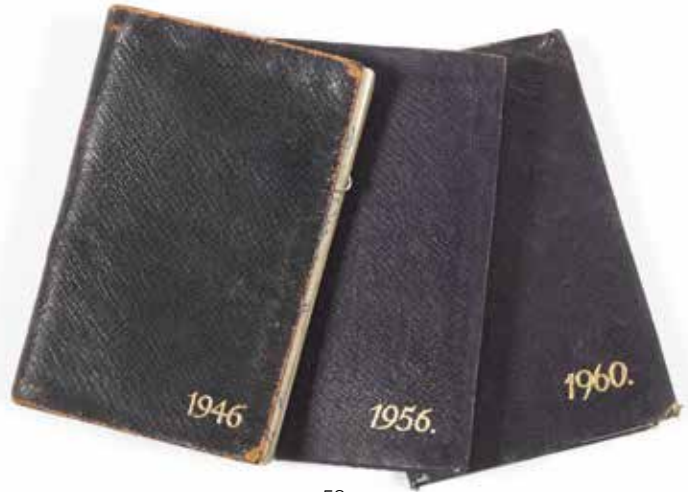
RAYMOND LOEWY (1893-1986)

Group of Three Day Planners
1946, 1956 and 1960
gold embossed leather, paper, extensively annotated with
phone numbers, jokes and engagements, 1960 planner with
black and white Loewy family photograph
*height of each 4in (10cm); width 3in (8cm); depth 1/4in
(0.6cm)*

\$1,500 - 2,500

Provenance

Raymond Loewy, Monte Carlo



53

54

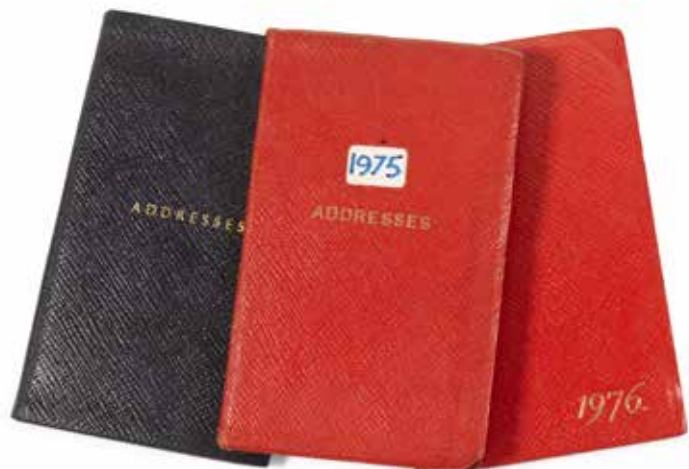
RAYMOND LOEWY (1893-1986)

Group of Two Day Planners and an Address Book
1975-1976
gold embossed leather, paper, extensively annotated with
phone numbers, engagements, expressions, remembrances,
trips, favorite places and design milestones
*height of largest 5 1/2in (14cm); width 3 1/2in (9cm); depth
1/4in (0.6cm)*

\$3,000 - 5,000

Provenance

Raymond Loewy, Monte Carlo



54



55

55

RAYMOND LOEWY (1893-1986)

Portfolio of Nine Prints

1978

eight lithographs and one serigraph, three of the lithographs stamped as travel proofs, one inscribed 'INCOMPLETE PROOF', the five remaining prints initialed lower right 'RL'

largest print 21 1/4 x 28 1/2in (54 x 72.4cm)

\$1,200 - 1,800

Provenance

Collection of Raymond Loewy, Monte Carlo

56

RAYMOND LOEWY (1893-1986)

Wristwatch

designed circa 1929

for Elgin, gold filled, leather *together with* a Sharp faux tortoiseshell lighter and a silk pocket handkerchief

length of watch with band 9in (23cm)

\$1,500 - 2,000

Provenance

Raymond Loewy, Monte Carlo



56



57

57 W

RAYMOND LOEWY (1893-1986)

LAX

1959

oil and collage on board, signed and dated lower left
'Raymond Loewy 59'

36 x 54in (91.5 x 137.2cm)

\$3,000 - 5,000

Provenance

Collection of Raymond Loewy, Monte Carlo

58 W

RAYMOND LOEWY (1893-1986)

Studio Prototype Model #1 of Air Force One

1962

for the presidential administration of John F. Kennedy,
plastic, fiberglass, chromed and enameled metal,
signed in marker 'RL' and dated '62' on triangular base;
together with a copy of a Loewy letter related to the
airplane and a 1967 photograph from United Press
International showing Raymond Loewy with this model
plane

height 15 1/2in(39cm); length 33in (84cm); depth 33in
(84cm)

\$10,000 - 15,000

Provenance

Raymond Loewy, Monte Carlo

The offered lot and additional project sketches were
used by Loewy to present new Air Force One designs
and color schemes to President Kennedy and the Chief
of Staff of the Pentagon.



58



59 (partial lot illustrated)

59

RAYMOND LOEWY (1893-1986)

Collection of Raymond Loewy Palm Springs House Ephemera circa 1946

comprising two annotated period blueprints of the Loewy House from the office of Clark & Frey Architects, three period Julius Shulman black and white photographs of the Loewy House and a period photocopy of a manuscript of design notes on the Loewy House from Raymond Loewy Associates, blueprint with Clark & Frey mark, black and white photographs with Julius Shulman credit stamps on verso

blueprints 24 x 36in (61 x 91cm); photographs 10 x 8in (26 x 20cm)

\$2,500 - 3,500

Provenance

Raymond Loewy, Monte Carlo

60

RAYMOND LOEWY (1893-1986)

Dash Control Fender Mirror

1962

for Roberk, mixed media

height 9in (23cm); width 15in (38cm); depth 11in (28cm)

\$1,200 - 1,800



60

61

SAUL STEINBERG (1914-1999)

Horse and Cowboy

circa 1951

ink, wash, and marker on poster board, signed lower right

'Steinberg'

image 17 1/2 x 9 1/4in (44.5 x 23.5cm)

sheet 26 1/4 x 19in (66.7 x 48.3cm)

\$5,000 - 7,000

Provenance

Collection of Raymond Loewy, Monte Carlo

62

RAYMOND LOEWY (1893-1986)

Prototype Table Lamp

1950s

enameled metal, brass

height 16in (40cm)

\$1,000 - 2,000

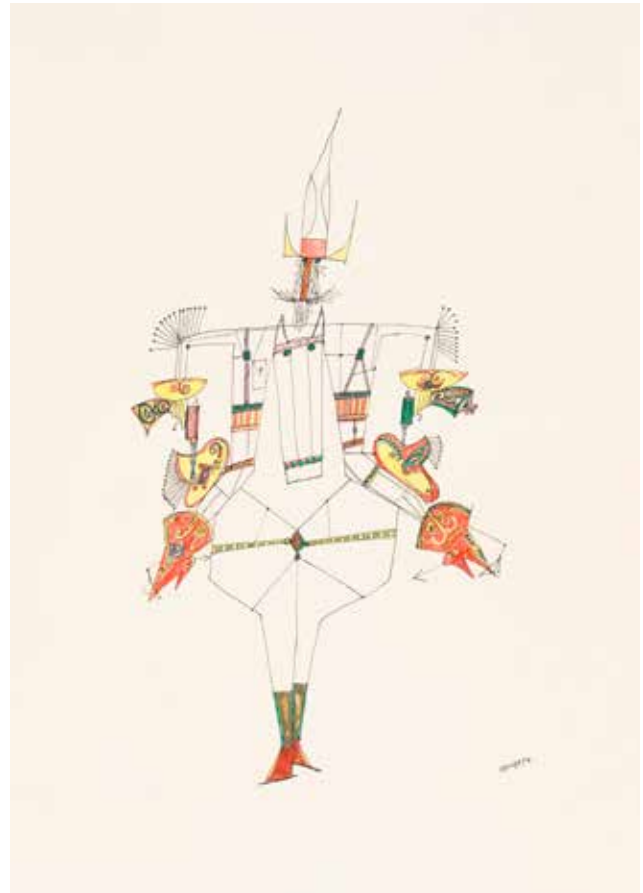
Provenance

Raymond Loewy

Bernard Baruch

David Hagerman

The offered lot was gifted from Raymond Loewy to his financial advisor, Bernard Baruch who ultimately gave it as a gift to his mentee, David Hagerman.



61



62

Property From The Estate Of Harry And Ruth Wechsler

Lots 63 - 75



63

63

HARALD NIELSEN (1892-1977)

Group of Pyramid Salt and Pepper Shakers
designed 1926

executed post-1945, for Georg Jensen, sterling silver, each with
maker's and designer's hallmarks, stamped 'STERLING DENMARK
632' (19)

height 2in (5cm); diameter 1 1/2in (3.8cm)

\$3,000 - 5,000



64

64

JOHAN ROHDE (1856-1935)

Covered Sugar Bowl

post-1945

for Georg Jensen, sterling silver, with maker's and designer's
hallmarks, stamped 'DENMARK STERLING 43'

height 6 1/4in (15.9cm); diameter 4 3/4in (12.1cm)

\$2,000 - 3,000



65

65

HARALD NIELSEN (1892-1977)

Sauce Boat

post 1945

for Georg Jensen, sterling silver, with maker's hallmarks and designer's initials, stamped 'DENMARK STERLING 761'
height 3 3/4in (9.5cm); width 6 3/4in (17.1cm); depth 4in (10.1cm)

\$1,000 - 1,500

66

JOHAN ROHDE (1856-1935)

Pitcher

post 1945

designed 1920, for Georg Jensen, sterling silver, with maker's hallmarks and designer's initials, stamped 'DENMARK STERLING 432 A'
height 9in (22.8cm); width 4 1/4in (10.7cm); depth 5 1/2in (13.9cm)

\$2,000 - 3,000



66



67

67

GEORG JENSEN (1866-1935)

Pair of Rosebud Cream Jugs

post 1945

sterling silver, each with maker's hallmarks, stamped 'DENMARK STERLING 235 B'

height 3 3/4in (9.5cm); width 5 1/4in (13.3cm); depth 2 3/4in (6.9cm)

\$3,000 - 5,000



68

68

GEORG JENSEN (1866-1935)

Pair of Rosebud Sugar Bowls

post 1945

sterling silver, with maker's hallmarks, stamped 'DENMARK STERLING 235 B'

height 4in (10.1cm); width 5 1/4in (13.3cm); depth 3 3/4in (9.5cm)

\$3,000 - 5,000

69

GEORG JENSEN (1866-1935)

An Assembled Group of Serving Pieces

designed 1915-30

executed post-1945, sterling silver, each with maker's hallmarks and stamped 'STERLING DENMARK' and numbered, comprising five pattern number 83, two pattern number 38, one pattern number 41 and one pattern number 21

total weighable silver approximately 32.4oz troy (9)

\$2,000 - 3,000



69

70

JOHAN ROHDE (1856-1935)

Cosmos Teapot

designed first quarter 20th century

executed post-1945, for Georg Jensen, sterling silver,
ebonized wood, with maker's and designer's hallmarks,
stamped 'DENMARK STERLING 45 C'

height 6 1/2in (16.5cm); width 5 3/4in (14.6cm); depth 9in
(22.8cm)

\$2,000 - 3,000



70

71

GEORG JENSEN (1866-1935)

Cosmos Coffee Pot

designed first quarter 20th century

executed post 1945, sterling silver, ebonized wood, with
maker's and designer's hallmarks, stamped 'DENMARK
STERLING 45 C'

height 10 3/4in (27.3cm); width 5 3/4in (14.6cm); depth 8
1/4in (20.9cm)

\$2,000 - 3,000



71



72

72

GEORG JENSEN (1866-1935)

Grapevine Centerpiece
designed first quarter 20th century
executed post 1945, sterling silver, with maker's hallmarks and
stamped 'DENMARK STERLING 296 A'
height 5in (12.7); width 14 1/2in (36.8cm); depth 11 1/4in (28.5cm)

\$8,000 - 12,000

73

JOHAN ROHDE (1856-1935)

Acorn Fish Platter
designed first quarter 20th century
executed post 1945, for Georg Jensen, sterling silver, with maker's
hallmarks, stamped 'DENMARK STERLING 642 U'
height 3/4in (1.9cm); width 25 3/4in (65.4cm); depth 12in (30.4cm)

\$6,000 - 8,000



73



74



75



74

JOHAN ROHDE (1856-1935)

Acanthus Pattern Silver Service
designed 1917

executed post-1945, for Georg Jensen, sterling silver, stainless steel, with fitted box comprising 23 dinner forks, 18 dinner knives, 12 luncheon knives, 34 fish/salad forks, 18 butter knives, 16 cocktail forks, 34 teaspoons, 18 soup spoons, *total weighable silver approximately 172.9oz Troy (173)*, stamped 'GEORG JENSEN STERLING DENMARK'

\$6,000 - 8,000

75

GEORG JENSEN (1866-1935)

Pair of Grapevine Lidded Vegetable Tureens
designed first quarter 20th century

executed post 1945, sterling silver, with maker's hallmarks and stamped 'DENMARK STERLING 408 E'
height 6in (15.2cm); diameter 10 1/4in (26cm)

\$6,000 - 8,000



76

76

GEORG JENSEN (1866-1935)

Grape Pattern Tazza

post 1945

model 263B, sterling silver, stamped with maker's hallmarks and assay marks, stamped '263B'

height 7 1/2in (19cm); diameter 7 1/4in (18.4cm)

\$1,500 - 2,500

Provenance

Property of Gerry Frank, Salem, Oregon

77

GEORG JENSEN (1866-1935)

Louvre Bowl

post 1945

model 19A, sterling silver, stamped with maker's hallmarks and assay marks, stamped '19A'

height 6 1/2in (16.5cm); diameter 8in (20.3cm)

\$1,800 - 2,500

The present lot is considered to be one of the most internationally famous pieces designed by Georg Jensen. The name, Louvre Bowl, originates from the Musée des Arts Décoratifs at Musée du Louvre, Paris acquiring the piece for its permanent collection in 1914.



77

78

GEORG JENSEN (1866-1935)

Grape Pattern Tazza

post 1945

model 263B, sterling silver, stamped with maker's hallmarks and assay marks, stamped '263B'

height 7 1/2in (19cm); diameter 7 1/4in (18.4cm)

\$1,800 - 2,500



78

79

GEORG JENSEN (1866-1935)

An Assembled Seven Piece Blossom Tea and Coffee Service with Tray

1915-1945

sterling silver, carved wood, comprising a coffee pot, teapot, creamer, covered sugar, bonbonniere, spoon and tray, each element stamped with various maker's hallmarks
height of coffee pot 8in (20cm); diameter of tray 16 1/2in (42cm)

\$5,000 - 7,000

Provenance

Private Collection, Northern California



80

HARALD NIELSEN (1892-1977)

Four Piece Pyramid Coffee Service post 1945

for Georg Jensen, model 600A, sterling silver, ebonized wood, comprising a coffee pot, tea pot, creamer and sugar bowl, each element stamped with designer's and maker's hallmarks, assay marks and model number
height of coffee pot 8in (20.3cm); width 7 1/2in (19cm); depth 4 1/2in (11.4cm)

\$3,000 - 5,000

Provenance

Property of Gerry Frank, Salem, Oregon

First designed in 1927, the present lot was inspired by the discovery of Tutankhamun's tomb in 1922.



79

80



Maynard L. Parker, photographer. Courtesy of the Huntington Library, San Marino, California.

81 W

T.H. ROBSJOHN-GIBBINGS (1905-1976)

Pair of Custom Armchairs

1937

for the Casa Encantada, Bel Air, California, executed by Peterson Studios, patinated iron, muslin

height 34in (86.3cm); width 26 3/4in (67.9cm); depth 21in (53.3cm)

\$12,000 - 18,000

Lots 81-83 were custom designed for a 40,000 square foot residence designed by architect, James Dolena in conjunction with the interior designer, T.H. Robsjohn-Gibbings, who worked with the Peterson Studios to execute his designs. The Casa Encantada was built and furnished for the huge sum of \$2 million between 1937-1938. Originally the home of Hilda Boldt Weber, the Casa Encantada was purchased in 1950 by Conrad Hilton who lived in the house for the following four decades.





82

82 W

T.H. ROBSJOHN-GIBBINGS (1905-1976)

Pair of Custom Armchairs

1937

for the Casa Encantada, Bel Air, California, executed by Peterson Studios, patinated iron, muslin
height 34in (86.3cm); width 26 3/4in (67.9cm); depth 21in (53.3cm)

\$12,000 - 18,000

83 W

T.H. ROBSJOHN-GIBBINGS (1905-1976)

Pair of Custom Armchairs

1937

for the Casa Encantada, Bel Air, California, executed by Peterson Studios, patinated iron, muslin
height 34in (86.3cm); width 26 3/4in (67.9cm); depth 21in (53.3cm)

\$12,000 - 18,000



83



84 W

TONY DUQUETTE (1914-1999)

Pair of Sunburst Mirrors
design introduced 1999
in the manner of Gilbert Poillerat, gilt and painted metal, hubcaps
*height 32 3/4in (83.3cm); width 23in (58.5cm); depth 2 1/2 to 3 1/2in
(5 to 9cm)*

\$2,000 - 3,000

Literature

Hutton Wilkinson, 'More Is More', Abrams Publishers, 2009, p. 334
and p. 359 for illustrations of similar mirrors in-situ at Duquette's
Beverly Hills 'Dawnridge' residence

84



85 W

ELSIE DE WOLFE (1865-1950)

Custom Console Table
1936
mirrored glass, copper
height 31in (78.7cm); width 55in (139.7cm); depth 18in (45.7cm)

\$2,500 - 3,500

The present lot was custom designed for the Beverly Hills, California
home of the Countess Dorothy Di Frasso.





86 W

TONY DUQUETTE STUDIOS

Pair of Floor Lamps

circa 2000

cast resin on velvet-clad wood base with fabric shades
 height to top of finial 51in (130cm); diameter of shades
 22in (56cm)

\$3,000 - 5,000

The design of the offered lot was based on 18th century pricket sticks that were part of the original 1949 decor of Tony Duquette's house known as Dawnridge.

87 W

TONY DUQUETTE (1914-1999)

Companion Pair of Side Tables

design introduced late 1990s

agate and wrought iron

height of tallest 18 1/2in (47cm); width 13 1/2in (34.3cm);
 depth 11in (28cm)

\$3,500 - 4,500

88 W

TONY DUQUETTE (1914-1999)

Jewel Party Decoration

circa 1989

gold leafed metal

height 116in (295cm); width 67in (170cm); depth 14in (36cm)

\$2,500 - 3,500

89 W

TONY DUQUETTE (1914-1999)

Custom Peacock Chair

1990s

parcel gilt and polychromed carved wood

height 35in (89cm); width 26in (66cm); depth 28in (71cm)

\$2,000 - 3,000

The chair in the offered lot was designed in India as a prototype for Duquette's commission of 'Peacock Thrones' for Dodie Rosekrans' Palazzo Brandolini residence on the Grand Canal in Venice

Literature

Hutton Wilkinson, 'More is More Tony Duquette' Abrams, p. 253 for an illustration of a variant pair of chairs



90



91



92



93

90 W
WILLIAM HAINES (1900-1973)

Custom Swiveling Stool
circa 1955
mahogany stained, upholstery
height 11 1/2in (29.3cm); diameter 19in (48cm)

\$1,000 - 2,000

William Haines often designed swiveling stools that were used next to or under coffee tables within spaces that were created for entertaining. The rotating nature of this piece enabled one to gently spin as conversation shifted in the room.

Provenance
Private Collection, West Coast

91 W
WILLIAM HAINES (1900-1973)

X Form Bench
circa 1955
patinated iron, brass, sheepskin
height 13in (33cm); width 28in (72cm); depth 15in (39cm)

\$1,200 - 1,800

Provenance
Private Collection, West Coast

92 W
WILLIAM HAINES (1900-1973)

Table Lamp on Pedestal
circa 1955
glazed ceramic, ebonized wood, walnut stained wood
overall height 68 1/4in (173.3cm); diameter 14 1/4in (36.1cm)

\$3,000 - 5,000

Provenance
Private Collection, West Coast

93
WILLIAM HAINES (1900-1973)

Custom Lion Table Lamp
circa 1955
red glazed terracotta, ebonized wood
height 18in (45.7cm); width of shade 12 1/4in (31.3cm);
depth of shade 7 1/8in (18.1cm)

\$1,500 - 2,000

Provenance
Private Collection, West Coast

94 W

WILLIAM HAINES (1900-1973)

Custom Seniah Lounge Chair

circa 1955

ebonized wood, upholstery

height 30in (76cm); width 27 1/2in (70cm); depth 33in (84cm)

\$3,000 - 5,000

Seniah chairs (Haines spelled backwards) appeared in most if not all design commissions by William Haines. Seniah designs varied from linear examples to more rounded forms depending on the interior.

Provenance

Private Collection, West Coast



94

95 W

WILLIAM HAINES (1900-1973)

Custom Rectangular Cocktail Table

circa 1955

patinated metal, polychromed wood, beveled glass

height 17in (43cm); width 48in (122cm); depth 20 1/2in (52cm)

\$1,800 - 2,500

Provenance

Private Collection, West Coast



95

96 W

WILLIAM HAINES (1900-1973)

Custom Side Table and Slipper Chair

circa 1955

table: black marble, chromed and patinated metal,

chair: ebonized wood, upholstery

height of table 15in (38cm); diameter 26in (66cm);

height of chair 29 1/2in (75cm); width 20in (51cm);

depth 19in (49cm)

\$1,500 - 2,500

Provenance

Private Collection, West Coast



96



97



98

97 W

WILLIAM HAINES (1900-1973)

Custom Modernist Figural Table Lamp
circa 1955
ebonized wood with patinated bronze figure
overall height 28in (71.2cm)

\$1,200 - 1,800

Provenance

Private Collection, West Coast

98 W

WILLIAM HAINES (1900-1973)

Custom Duck Table Lamp
circa 1955
blanc de chine porcelain, ebonized wood, enameled metal
overall height 25in (64cm); diameter of shade 12in (30cm)

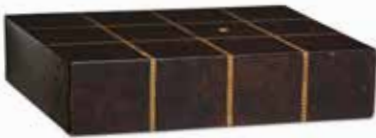
\$1,800 - 2,500

Provenance

Private Collection, West Coast



99



99

WILLIAM HAINES (1900-1973)

Pair of Custom Wall Mounted Shelves
circa 1955
tooled gilt decorated and tortoiseshell spotted leather, wood
height 4in (10cm); width 18in (46cm); depth 12in (30cm)

\$1,500 - 2,000

William Haines was known to clad tables, chair legs, consoles and shelves in leather.

Provenance

Private Collection, West Coast



101

100 W

WILLIAM HAINES (1900-1973)

Tray Top Table
later fitted for backgammon with playing pieces, ebonized wood with adhered sheets for games, sheets signed and dated 'Lawson & Lawson Inc. Wilton Conn 1973'
height of table 28 3/4in (73cm); width 26 1/2in (67cm); depth 15in (38cm)

\$2,500 - 3,500

Provenance

Private Collection, West Coast

101 W

WILLIAM HAINES (1900-1973)

Custom Table Lamp
circa 1955
acrylic with ebonized wood base
overall height 27 1/2in (69.8cm); diameter of shade 17in (43.2cm)

\$800 - 1,200

Acrylic lighting, table and room accessories similar to the works on offer appeared consistently throughout Haines mid-20th century interior design commissions.

Provenance

Private Collection, West Coast



100 (partial lot illustrated)

102

WILLIAM HAINES (1900-1973)

Table Box and Pair of Dustbins

circa 1955

acrylic, red painted composite

height of box 4in (10.2cm), length 7in (17.8cm), width 5in (12.7cm)

height of dust bins 12in (30.5cm); width 12in (30.5cm); depth 8 1/2in (21.6cm)

\$800 - 1,200

Provenance

Private Collection, West Coast



102

103

WILLIAM HAINES (1900-1973)

Custom Table Lamp Base

circa 1955

with later Pre-Columbian style dog figure, terracotta, ebonized wood

height 18 1/4in (46.3cm); width of shade 12 1/4in (31.3cm); depth of shade 7 1/8in (18.1cm)

\$1,500 - 2,500

Provenance

Private Collection, West Coast



103

104 W

WILLIAM HAINES (1900-1973)

Custom Hostess Chair

circa 1955

mahogany, quilted upholstery

height 28 1/2in (73cm); width 24in (61cm); depth 24in (61cm)

\$5,000 - 7,000

The chair on offer is one of the most iconic designs created by William Haines. Variant examples of this form appear throughout many Haines commissions including work for Jack and Ann Warner, Frances and Sydney Brody and Alfred and Betsy Bloomingdale.

Provenance

Private Collection, West Coast



104



105

105 W

FONTANA ARTE (FOUNDED 1932)

circa 1940

tinted glass, mirror plate, brass, acid-stencil mark 'FONTANA ARTE'
height 36in (90cm); width 19 1/4in (49cm)

\$2,500 - 3,500

Literature

Franco Deboni, 'Fontana Arte: Gio Ponti, Pietro Chiesa, Max Ingrand',
Allemandi & C., 2012, fig. 385, 433 (related later models by Max
Ingrand)

106

PIETRO CHIESA (1892-1948)

Rare Pair of Table Lamps

circa 1935

for Fontana Arte, frosted glass, brass, enameled brass
height 13 1/4in (33.5cm); width 10 1/4in (26cm); depth 5 1/4in (13cm)

\$2,500 - 3,500

Provenance

Private Collection, Milan

107 W

MAISON JANSEN (FOUNDED 1880)

Pair of Console Tables

circa 1940

sycamore

height 34 1/4in (87cm); width 47in (119.5cm); depth 14 3/4in (37.5cm)

\$8,000 - 12,000

Designed and executed for the home of Jack Warner, Villa Aujourd'hui,
Cap D'Antibes, 1938.

Provenance

Galerie Chastel Marechal, Paris

Barry Friedman, New York

Private Collection, Dallas, Texas



106



107



108

PAOLO VENINI (1895-1959)

Vase

1945-66

glass with internal air bubbles, acid stencil 'venini murano ITALIA'
height 4 3/4in (12cm); diameter 4 1/4in (10.7cm)

\$1,500 - 2,500

Provenance

Acquired New York City, circa 1970



108

109

ANGELO LELII (1911-1979)

Pair of Wall Lamps

1956

for Arredoluce, brass, acid frosted glass

height 11in (28cm); width 13 1/4in (34cm); depth 7 1/2in (19cm)

\$1,500 - 2,000

Provenance

Private Collection, Milan

Literature

Anty Pansera, Alessandro Padoan, Alessandro Palmaghini,
'Arredoluce Catalogo Ragionato 1943-1987, Catalogue
Raisonné', Silvana Editoriale, 2018, no. 131, p. 302



109

110 W

PAOLO BUFFA (1903-1970)

Pair of Armchairs

circa 1955

walnut, later upholstered cushions

height 31 1/2 in (80cm); width 27 in (68.6 cm); depth 22 1/2 in (57.2cm)

\$1,500 - 2,000

Provenance

Private Collection, Europe



110





111

111

JOHN GRILLO (1917-2014)

Untitled

1947

oil on paper laid on canvas, signed and dated lower left 'grillo 47'
14 3/4 x 22 1/8in (37.5 x 56.3cm)

\$3,000 - 5,000

Provenance

McCormick Gallery, Chicago

Leslie Hindman Auctioneers, Chicago, 'Modern and Contemporary Art', 12 September 2010, Lot 192

Private Collection, Northern California

112

PIETRO CHIESA (1892-1948)

Table Lamp

circa 1935

for Fontana Arte, wheel cut glass, brass, enameled brass
height 9 3/4in (24.5cm); width 4 3/4in (12.5cm); depth 2 1/2in (6.5cm)

\$2,000 - 3,000

Provenance

Private Collection, Milan

113

ERCOLE BAROVIER (1889-1974)

Con Applicazione Vase

circa 1935

for Ferro Toso Barovier, hand-blown glass with applications
height 17in (43cm); diameter 8 1/4in (21cm)

\$4,000 - 6,000

Provenance

Private Collection, New York

Literature

Attilia Dorigato, 'Ercole Barovier 1889-1974: Vetraio Muranese', Marsilio Editori, 1980, p. 64 (model variants illustrated)



112



113



114

114 W

DUILIO DUBÉ BARNABÉ (1914-1961)

Plaque

circa 1955

for Fontana Arte, reverse painted glass, painted mark
'DUBE*FONTANA ARTE*'

height 1in (3cm); width 29in (73.5cm); depth 25 1/2in (65cm)

\$2,000 - 3,000

Provenance

Private Collection, Milan



115



116

115

MURANO

Two Bowls and a Vase

1950s

blown glass

*height of vase 3 3/4in (9.5cm); width 3 1/2in (8.8cm);
depth 3 1/4in (8.2cm)*

\$1,800 - 2,500

116

DINO MARTENS (1894-1970)

Oriente Bowl

1950s

internally decorated patchwork glass

*height 2 1/4in (5.7cm); width 8 3/4in (22.2cm);
depth 6in (15.2cm)*

\$1,500 - 2,500

Provenance

Acquired New York City, circa 1975

117 W

BAROVIER & TOSO

Palm Tree Floor Lamp

circa 1945

blown glass, together with remnant of paper label, "Barovier & Toso

Murano Made in Italy "

height 79 1/4in (201.3cm); widest diameter of fronds 34 1/4in (87cm)

\$12,000 - 18,000

Provenance

Collection of Lisa L. Baginski, Los Angeles

Acquired Milan, circa 2000



117



118

118

ANTON MICHELSEN (FOUNDED 1841)

Tulip Pattern Silver Service

circa 1950

sterling silver, with fitted box comprising 12 knives, 12 large spoons, 12 teaspoons, 12 dinner forks, 12 salad forks, 11 dessert forks, 12 butter knives, 6 serving utensils, *together with* 11 unassociated cocktail forks and 1 stainless steel bottle opener, *total weighable silver for service* 152.97oz troy (89), stamped 'A. MICHELSEN STERLING DANMARK' with maker's hallmarks

\$2,500 - 3,500



119

119

THE KALO SHOP (1900-1970)

Group of Five Table Objects

first quarter 20th century

sterling silver, comprising a pair of lobed bowls with divider

and underplates, a lobed footed bowl, two lobed footed

serving dishes, each stamped with firm's hallmarks

height of largest dish 1 3/4in (4.4cm); length 12 1/4in

(31.1cm); depth 7in (17.7cm)

\$2,000 - 3,000



120

120

ALLAN ADLER (1916-2002)

Sunset Pattern Silver Service
circa 1940

sterling silver, comprising 10 dinner forks, 10 salad forks, 10 dinner knives, 10 teaspoons, 2 butter spreaders, sugar shovel, gravy ladle, and smaller ladle, *total weighable silver approximately 90.3oz troy stamped 'ALLAN ADLER HAMMERED STERLING' (45)*

\$2,500 - 3,500

121

ALLAN ADLER (1916-2002)

Pair of Bowls

mid 20th-century

sterling silver, each stamped with maker's hallmarks

height 2in (5cm); width 9 3/4in (24.7cm); depth 8in (20.3cm)

\$1,200 - 1,800



121



122

122

ALLAN ADLER (1916-2002)

Starlit Pattern Silver Service
circa 1950

sterling silver, with fitted wood box comprising 12 knives, 12 large spoons, 12 teaspoons, 12 dinner forks, 12 salad forks, 12 butter knives, 12 serving utensils, *total weighable silver approximately 167.8oz troy (72)*, stamped 'ALLAN ADLER N HAMMERED STERLING'

\$5,000 - 7,000



123

123 W

PAUL MCCOBB (1917-1969)

Chest of Drawers

1956

for Calvin, model 1006, mahogany, brass, top left drawer with brass manufacturer's label 'CALVIN GRAND RAPIDS THE CALVIN GROUP DESIGNED BY PAUL MCCOBB'

height 36in (91.4cm); width 66in (167.6cm); depth 19 1/2in (49.5cm)

\$2,000 - 3,000

124 W

PAUL MCCOBB (1917-1969)

Pair of Night Tables

1952

for Calvin, model 8712, mahogany, brass, travertine, each with brass manufacturer's plaque 'CALVIN GRAND RAPIDS THE IRWIN COLLECTION designed by PAUL MCCOBB'

height 25 1/2in (64.7cm); width 20in (50.8cm); depth 22in (55.8cm)

\$1,500 - 2,500



124

125 W

PAUL MCCOBB (1917-1969)

Assembled Dining Suite

1952-56

for Calvin, dining table model C8907, mahogany, brass, with brass manufacturer's plaque 'CALVIN GRAND RAPIDS THE IRWIN COLLECTION designed by PAUL MCCOBB' together with two leaves, the chairs for Directional, models 1080 and 1082, mahogany, upholstery, apparently unmarked, four side chairs and two armchairs

height of table 29in (73.6cm); diameter 48in (121.9cm); height of chairs 34in and 34 1/4in (86.3cm and 86.9cm); width 18in and 23 3/4in (45.7cm and 60.3cm); depth 18 1/4in and 22in (46.3cm and 55.8cm)

\$2,000 - 3,000

An example of the dining table in the present lot is illustrated in 'The Irwin Collection Contemporary Furniture Designed by Paul McCobb'

An example of the chairs in the present lot are illustrated on page 98 of 'DIRECTIONAL DESIGNS / PAUL MCCOBB'



125

126

LUCIA STERN (1895-1987)

Untitled

circa 1925

mixed media with fiber collage, signed lower left 'LUCI'

36 x 24in (91.4 x 61cm)

\$1,500 - 2,500



126



127

127

SWEDISH MODERN

Collection of Fourteen Studio Pottery Bowls, Vases and Animal Figures

circa 1955

including works by Berndt Friberg, Rörstrand and Gunnar Nylund, all with various maker's marks and signatures

height of tallest 8 1/2in (21.5cm); width 5 1/2in (13.9cm)

\$2,000 - 4,000

Provenance

Estate of Siri Eliason



128

128 W

ANTONIO SAURA (1930-1998)

Tapestry

1964

wool, with maker's symbol woven into lower corner, with fabric label on the reverse 'SAURA CAROLA-TORRES MADRID'
length 81 1/4in (206.3cm); width 63 3/4in (161.9cm)

\$3,000 - 5,000



129

129 W

TAPIO WIRKKALA (1915-1985)

Coffee Table

designed 1958

model no. 9013, for Asko, padauk and maple inlaid with hazel, enameled steel, branded 'TAPIO WIRKKALA ASKO MADE IN FINLAND'

height 21 1/4in (54cm); width 48 3/4in (124cm); depth 24 1/2in (62cm)

\$2,000 - 3,000

Literature

Marianne Aav, 'Tapio Wirkkala 1915-1985: Eye, Hand, and Thought', Taideteollisuusmuseum, 2001, p. 380

130

TAPIO WIRKKALA (1915-1985)

Line Cut Vase

1950s

for Iittala, engraved glass, etched 'TAPIO WIRKKALA IITTALA' on underside, together with two Kaj Franck bubble vases, glass, etched 'KAJ FRANCK IITTALA' on undersides

height of line cut vase 13in (33cm); height of bubble vases 3in (7.5cm)

\$1,000 - 2,000



130



131

131

MICHAEL KENNA (BORN 1953)

Group of Three Photographs
fourth quarter 20th century
gelatin silver prints, each signed lower right 'Michael Kenna' and from
an edition of 45
largest 7 3/4 x 7 3/4in (19.7 x 19.7cm)

\$1,500 - 2,500

Provenance

G. Austin Conkey Collection

132

CHRIS KNIGHT (BORN 1964)

Nurture
2009

cast silver and stainless steel, with stamped makers mark, Sheffield
assay mark, and '925' for sterling silver
*height 7in (17.8 cm); diameter 7 1/3in (18.6 cm); approximate weight
81 oz (2296 gram)*

\$7,000 - 9,000

The present work was executed in 2009.

Provenance

Collection of the Artist, Sheffield, United Kingdom

133

ANTONIO DA ROS (1936-2012)

Rare Large Clessidra a Tronco di Cono Vases
1964

for Vetreria Gino Cenedese, dark smokey purple sommerso glass,
cased in clear
height 17 1/4in (44cm)

\$1,200 - 1,800

Provenance

Property from the Cenedese Archive



132



133



134

134

JOE (1930-1971) AND GIANNI COLOMBO (1937-1993)

Acrilica Table Lamp

designed 1962

model no. 281, for O-Luce, enameled steel, acrylic

height 9in (23cm); width 9 1/4in (23.5cm); depth 9 1/2 (24cm)

\$2,000 - 3,000

The Acrilica model won the gold medal at the XIIIe Triennale, Milan, 1964

Provenance

Private Collection, London

Literature

Ignazia Favata, Vittorio Fagone, 'Joe Colombo and Italian Design of the Sixties', The MIT Press, 1988, p. 61



135

135

ANTONIO DA ROS (1936-2012)

Three Rare Clessidra Cilindrica Vases

1964

for Vetreria Gino Cenedese, sommerso glass, paper label

to large example 'MURANO cenedese VETRI 38/64'

heights 5 1/2in (14cm) to 12in (30cm)

\$1,500 - 2,000

Provenance

Property from the Cenedese Archive

136

AMERICAN MODERN

Pair of Table Lamps

circa 1960

enameled aluminum, brass

height 13in (33cm)

\$1,500 - 2,000

Provenance

Private Collection, New York



136

137 W

MAX INGRAND (1908-1969)

Group of Four Windows

circa 1950

painted, stained and leaded glass, three windows etched in lower right corner 'MAX INGRAND MADE IN FRANCE'

height of largest 51 1/4in (130.1cm); width 28in (71.1cm); depth 1/4in (.6cm)

\$3,500 - 4,500

By repute, the offered lot was designed by Ingrand for the 'Mother's House' at St. Josephs Catholic Nunnery in Hamilton, Ontario, Canada.



138 W

MAX INGRAND (1908-1969)

Group of Four Windows

circa 1950

painted, stained and leaded glass, one window etched in lower corner 'MAX INGRAND MADE IN FRANCE'

height 44in (111.7cm); width 14in (35.5cm); depth 1/4in (.6cm)

\$3,500 - 4,500

By repute, the offered lot was designed by Ingrand for the 'Mother's House' at St. Josephs Catholic Nunnery in Hamilton, Ontario, Canada.



137



138

139 W

AMERICAN

Pair of Swiveling Lounge Chairs

circa 1955

upholstered, chromed metal

height 26in (66cm); width 29in (74cm); depth 29in (74cm)

\$1,500 - 2,000

140 - 146

No lots



139





147



148

147 W

CHARLES (1907-1978) & RAY EAMES (1912-1988)

670 Lounge Chair and 671 Ottoman

designed 1956

laminated rosewood, black leather, with black circular Herman Miller tag on underside of chair

height of chair 32in (81cm); width 32in (82cm); depth 29in (74cm);

height of ottoman 16in (41cm); width 26in (66cm); depth 21in (53cm)

\$2,000 - 3,000

Provenance

Private Collection, New York

148

MELVIN SOKOLSKY (BORN 1933)

Over New York

1963

for Harper's Bazaar, gelatin silver print, signed 'M Sokolsky', titled and numbered 18/25 verso

17 x 14in (43.2 x 35.6cm)

sheet 20 x 16in (50.8 x 40.7cm)

\$6,000 - 8,000

149 W

FLORENCE KNOLL (1917-2019)

Hanging Cabinet

designed 1947

model 121 W-1, for Knoll Associates, lacquered wood, walnut and leather, with applied manufacturer's label

height 17 3/4in (45.1 cm); width 72in (182.9 cm); depth 15 1/4in (38.7 cm)

\$1,500 - 2,000

Provenance

Private Collection, New York

Acquired directly from the above by the present owner

150

KAARINA AHO (1925-1990)

Untitled (Horse Sculpture)

circa 1960

glazed stoneware, inscribed on the underside 'AHO FINLAND'

height 8in (20.3cm); width 8in (20.3cm); depth 8 1/4in (20.9cm)

\$800 - 1,200



149



150

151 W

ROBERTO SEBASTIÁN MATTA (1911-2002)

Malitte Lounge Furniture

1966

polyurethane foam, wool, *together with* a framed newspaper clipping from the San Francisco Sunday Examiner & Chronicle

height of largest element 20in (50.8cm); width 60 3/4in (154.3cm); depth 25in (63.5cm)

\$1,500 - 2,500

Provenance

G. Austin Conkey Collection

The present lot was illustrated in the San Francisco Sunday Examiner & Chronicle, May 20, 1973, p. 32

A similar example is in the permanent collection of the Museum of Modern Art, New York.



151



152

152 W

ED MOSES (1926-2018)

Untitled

2004

acrylic on mylar, initialed 'EMB' and dated '04' lower right, inscribed illegibly lower left
56 x 36in (142.2 x 91.4cm)

\$10,000 - 15,000

Provenance

Imago Galleries, Palm Desert, CA

153 W

FLORENCE KNOLL (1917-2019)

Hanging Cabinet

designed 1947

model 121 W-1, for Knoll Associates, lacquered wood, walnut and leather, with applied manufacturer's label

height 17 3/4in (45.1 cm); width 72in (182.9 cm); depth 15 1/4in (38.7 cm)

\$1,500 - 2,000

Provenance

Private Collection, New York

Acquired directly from the above by the present owner



153

154

GINO SARFATTI (1912-1985)

Two Table Lamps

designed 1971

for Arteluce, model 607, aluminum with white and caviar grey crackle paint

height 12 1/4 in (31 cm); diameter 15 1/4 in (39 cm)

\$1,000 - 1,500

Provenance

Collection of Filippo Antonino Raffa, Milan

Literature

Marco Romanelli and Sandra Severi, 'Gino Sarfatti, Selected Works 1938-1973', Milan 2012, p. 440, no. 607, other examples illustrated in black and white



154



155



156

155

DAME LUCIE RIE (1902-1995) & HANS COPER (1920-1981)

Pouring Vessel

circa 1970

glazed stoneware, impressed with artists' seals

height 3 5/8in (9.3cm); width 5in (12.7cm); depth 3 1/2in (8.9cm)

\$1,500 - 2,000

Provenance

Collection of Patricia Nichol Barnes, Evanston, Illinois

156

DAME LUCIE RIE (1902-1995) & HANS COPER (1920-1981)

Pouring Vessel

circa 1970

glazed stoneware, impressed with artists' seals

height 3 5/8in (9.3cm); width 6 7/8in (17.5cm); depth 4 5/8in (11.7cm)

\$1,500 - 2,000

Provenance

Collection of Patricia Nichol Barnes, Evanston, Illinois



157

157

DAME LUCIE RIE (1902-1995)

Vessel

circa 1975

glazed stoneware with bronze-toned manganese, vertical sgraffito

banding to exterior, impressed on underside 'LR'

height 5in (12.7cm); diameter 3in (7.6cm)

\$4,000 - 6,000

Provenance

Collection of Patricia Nichol Barnes, Evanston, Illinois



158

158

DAME LUCIE RIE (1902-1995)

Bowl

circa 1955

glazed stoneware with manganese speckles and rim, impressed on

underside 'LR'

height 3 3/4in (9.5cm); length 7in (17.7cm); width 5 1/2in (14cm)

\$1,500 - 2,000

Provenance

Collection of Patricia Nichol Barnes, Evanston, Illinois



159

159

DAME LUCIE RIE (1902-1995)

Knitted Bowl

circa 1978

glazed stoneware with manganese, diamond pattern sgraffito bands to interior and exterior, impressed on underside 'LR'
height 4in (10.2cm); diameter 11 3/4in (29.8cm)

\$10,000 - 15,000

Provenance

Private International Collection

The offered lot was a personal gift from Dame Lucie Rie to her longtime hairstylist.

160

DAME LUCIE RIE (1902-1995)

Byzantine Style Vase

circa 1978

glazed stoneware with bronze-toned manganese, vertical sgraffito banding to exterior and interior, impressed on underside 'LR'
height 10 3/4in (27.3cm); diameter 4 1/4in (10.8cm)

\$10,000 - 15,000

Provenance

Private International Collection



160



161 (partial lot illustrated)



162



163

161 W

WALTER LAMB (AMERICAN)

Set of Outdoor Furniture
circa 1960

for Brown Jordan, bronze tubing, cord,
comprising a round coffee table, six armchairs,
pair of lounge chairs, pair of ottomans, bench,
rocking chair
coffee table height 17 1/4in (43.8cm); diameter
38in (96.5cm)

\$8,000 - 12,000

162 W

WALTER LAMB (AMERICAN)

Dining Table
circa 1955

for Brown Jordan, bronze tubing, wood
height 27 1/2in (69cm); width 36in (91.4cm);
depth 36in (91.4cm)

\$1,200 - 1,800

163 W

WALTER LAMB (AMERICAN)

Set of Four Dining Chairs
circa 1955

for Brown Jordan, bronze tubing, rubber cord,
comprising two armchairs and two side chairs
height of armchairs 32in (81.2cm); width 21
1/4in (53.9cm); depth 25 1/2in (64.7cm);
height of side chairs 32 1/4in (81.9cm); width
18 1/2in (46.9cm); depth 21 1/2in (54.6cm)

\$1,500 - 2,500



164



165



166

164 W

WALTER LAMB (AMERICAN)

Armchair and Occasional Table
circa 1955

for Brown Jordan, bronze tubing, rubber cord,
hammered glass

height of table 18 1/4in (46.3cm); width 23
1/2in (59.6cm); depth 18 1/2in (46.9cm);
height of armchair 32in (81.2cm); width 21
1/4in (53.9cm); depth 25 1/2in (64.7cm)

\$1,500 - 2,000

165 W

WALTER LAMB (AMERICAN)

Rectangular Dining Table
circa 1955

for Brown Jordan, bronze tubing, wood
height approximately 30in (76.2cm); width
96in (243.8cm); depth 36in (91.4cm)

\$2,500 - 3,500

166 W

WALTER LAMB (AMERICAN)

Pair of Chaise Longues
circa 1955

for Brown Jordan, bronze tubing, rubber cord
height 32 1/4in (81.9cm); width 28 1/4in
(71.7cm); depth 69 1/2in (176.5cm)

\$2,500 - 3,500



167

167

ANTONIO DA ROS (1936-2012)

Group of Four Rare Clessidra a Fungo Vases
1964

for Vetreria Gino Cenedese, sommerso glass
height 5 1/2in (14cm) to 9 3/4in (25cm)

\$3,000 - 5,000

Provenance:

Property from the Cenedese Archive



168

168

ANTONIO DA ROS (1936-2012)

Group of Four Rare Clessidra Cilindrica Vases
1964 - 1966

for Vetreria Gino Cenedese, sommerso glass, foil label to one example
'MURANO cenedese VETRI'
height 7in (17.5cm) to 9 1/4in (23.5cm)

\$1,800 - 2,500

To be sold without reserve

Provenance

Property from the Cenedese Archive



169

169 W

VETRERIA GINO CENEDESE (FOUNDED 1946)

Three Rare Borraccia Ovale Vases
1965

for Vetreria Gino Cenedese, sommerso glass
heights 9 3/4in (25cm) to 10 1/2in (27cm)

\$1,200 - 1,800

Provenance

Property from the Cenedese Archive



170

170

ANN WARFF (BORN 1937)

Bowl

circa 1980

glass, with engraved signature 'Ann Wärrff 7.3/3.12 W.', together with an Astrakan vase with engraved signature 'Orrefors 9059490 Olle Alberius Ariel Gallery 37-84' with Orrefors Sweden label
height of tallest 7in (17.7cm); diameter 5 1/4in (13.3cm)

\$1,800 - 2,500

Provenance

Estate of Siri Eliason



171

171

OSCAR TORLASCO (1934-2004)

Group of Three Wall Lights

circa 1955

for Lumi, brass with enameling

length 23in (58.4cm); width 7in (17.8cm)

\$2,000-3,000

172 W

WARREN PLATNER (1919-2006)

Pair of Lounge Chairs

1980

for Knoll, chrome-plated steel, polyester and urethane upholstery, each

chair with manufacturer's label stamped 'JUL 14 1980 KNOLL INSP

25', one chair also with manufacturer's order sticker

height 30 1/2in (77.4cm); width 36in (91.4cm); depth 23in (58.4cm)

\$2,000 - 4,000



172





173



173

MAX INGRAND (1908-1969)

Pair of Wall Lights

circa 1960

model no. 1844, for Fontana Arte, acid frosted glass, enameled steel, brass
each height 17in (43cm); width 27in (68cm); depth 4 1/4in (11cm)

\$15,000 - 20,000

Literature

Franco Deboni, 'Fontana Arte: Gio Ponti, Pietro Chiesa, Max Ingrand', Allemandi & C., 2012, fig. 336

174 W

PHILIP (1907-1987) AND KELVIN LAVERNE (BORN 1937)

Wall Panel

1960s

acid-etched, enameled and patinated bronze, acid-etched lower center 'Kelvin Philip Laverne'
height 48in (121.9cm); width 23 3/4in (60.3cm); depth 1in (2.5cm)

\$1,500 - 2,500



174



175

175 W

PHILIP AND KELVIN LAVERNE

Chan Coffee Table

circa 1965

acid-etched, enameled and patinated bronze over wood, acid-etched facsimile signature 'Philip + Kelvin LaVerne'
height approximately 16 1/4in (41.2cm); diameter 47in (119.3cm)

\$4,000 - 6,000



176

176

PIETRO CHIESA (1892-1948)

Table Lamp

circa 1940

for Fontana Arte, acid frosted glass, brass

height 8 in (20.5cm); width 4 1/2 in (11.5cm); depth 2 1/2 in (6.5cm)

\$2,000 - 3,000

Provenance

Private Collection, Milan

Literature

Franco Deboni, 'Fontana Arte: Gio Ponti, Pietro Chiesa, Max Ingrand', Allemandi & C., 2012, fig. 80

177 W

STILNOVO (1946-1988)

Ceiling Light

circa 1950

brass

drop height 42 in (106.7 cm)

\$3,000 - 5,000

Provenance

Collection of Filippo Antonino Raffa, Milan

178 W

PHILIP AND KELVIN LAVERNE

Chan Dining Table

circa 1965

acid-etched, enameled and patinated bronze over wood,

acid-etched facsimile signature 'Philip + Kelvin LaVerne'

height 28 3/4 in (73cm); diameter 47 1/4 in (120cm)

\$6,000 - 8,000



177



178



179

179 W

VERNER PANTON (1926-1999)

1-2-3 System Lounge Chair

1973

for Fritz Hansen, model F, leather, aluminum and chrome-plated steel

height 45 in (114.3 cm); width 27 1/2 in (69.9 cm); depth 29 1/2 in (74.9 cm)

\$1,500 - 2,000

Provenance

Private Collection, New York



180

180

BIJAN BAHAR (20TH CENTURY)

Sculpture

1995

acrylic, inscribed 'Bijan Bahar 1/1 FROM: PERRY CRYSTAL CRAFT JAN - 1995'

height 21 1/4 in (53.9cm); width 6 1/2 in (16.5cm); depth 5 3/4 in (14.6cm)

\$1,800 - 2,500

181

KARL SPRINGER (1931-1991)

Table Magnifying Glass

circa 1980

brass, chromed metal, mirrored glass

height 10 1/2 in (27cm); width 9 in (23 cm); depth 2 1/2 in (6.5cm)

\$1,000 - 2,000

Provenance

Private Collection, Los Angeles



181



182

182 W

KARL SPRINGER (1931-1991); ATTRIBUTED TO

Hand Sculpture

1980s

stainless steel, bronze, apparently unsigned

height 20 1/4 in (51.4cm); width 9 3/8 in (23.8cm); depth 3 3/4 in (9.5cm)

\$1,000 - 2,000

Provenance

Private Collection, Los Angeles

183

VAL BERTOIA (BORN 1949)

Sounding Sculpture (B-2285)

2019

with 19 rods, copper, beryllium copper

height 18 in (45.7cm); width 16 1/4 in (41.2cm); depth 4 in (10.1cm)

\$4,000 - 6,000

184 W

BRUCE BEASLEY (BORN 1939)

Tacoignier

1972

cast acrylic, incised 'Beasley '72' and numbered '2/6' on the stem

height 19 in (48.3cm); length 17 in (43.2cm); width 12 in (30.5cm)

\$2,000 - 3,000

Provenance

G. Austin Conkey Collection



183



184



185

185

DENNIS HARE (BORN 1946)

Summer Concert

1988

oil on canvas, signed lower left 'D. Hare' and signed, titled and dated verso '11/88'

20 x 24in (50.8 x 61cm)

\$2,000 - 4,000

Provenance

Bonhams, San Francisco, 'Made in California', 24 May 2011, Lot 47
Private Collection, Northern California

186 W

JOHN RISLEY (1919-2001)

Dining Suite

circa 1965

enameled steel, comprising a table and four Nun chairs, unmarked
height of table 28 1/4in (71.7cm); diameter 36in (91.4cm); height of
chairs 46 1/2in (118.1cm); width 18 3/4in (47.6cm); depth 19 3/4in
(50.1cm)

\$2,500 - 3,500



186



187

187

ROBERT GRAHAM (1938-2008)

MOCA Torso

1992-1995

for MOCA Editions, Los Angeles, bronze, incised 'Juan' and signed 'R Graham' to underside, stamped 'F', from the edition of 3,500
height 10 3/4in (27.3cm); diameter of base 4 1/4in (10.8cm)

\$2,000 - 3,000

Provenance

G. Austin Conkey Collection

188

BRYAN HUNT (BORN 1947)

Plunge Study

1994

patinated bronze, incised 'B. HUNT 1/5 94' and stamped 'ARGOS'
overall height 16 1/2in (41.9cm)

\$2,500 - 3,500



188

189

BENIAMINO BENEVENUTO BUFANO (1898-1970)

Head of Laura

gilt bronze, ebonized wood, inscribed 'Bufano' and stamped 'AP'
overall height 10 1/2in (27cm); width 6 1/2in (17cm); depth 4in (10cm)

\$1,000 - 1,500



189

190 W

BENIAMINO BENEVENUTO BUFANO (1898-1970)

Bird Form

black marble, apparently unsigned

height 34 3/4in (88.3cm); width 10 1/2in (26.7cm); depth 13 3/4in (34.9cm)

\$6,000 - 8,000

Provenance

Cory Galleries, San Francisco

Collection of Sheila Newman, Toronto



190

191

BENIAMINO BENEVENUTO BUFANO (1898-1970)

Bird

circa 1960

patinated bronze, stamped 'Bufano' to base of bronze

height 8in (20.4cm); width 3 1/2in (8.9cm); depth 5 1/2in (14cm)

\$1,800 - 2,500

Provenance

Michaan's, Alameda, California, 9 June 2011, Lot 1047



191

192

BENIAMINO BENEVENUTO BUFANO (1898-1970)

Companion Pair of Marching Penguins

patinated bronze, marble, each inscribed 'Bufano'

overall height of tallest 11in (28cm)

\$5,000 - 7,000



192



193



194

193 W

STEVE KESTREL (BORN 1947)

Creature Comforts

underside of base inscribed '9973'

height 21 3/4in (55.2cm); width 17 1/2in (44.4cm); depth 9 3/4in (24.7cm)

\$2,000 - 4,000

Provenance

Estate of William P. Bishop, Scottsdale, Arizona

We are grateful to the artist for assisting with the catalog description.

194 W

STEVE KESTREL (BORN 1947)

Warm Currents (Sea Turtles)

patinated bronze, incised 'S. KESTREL 4/21' with artist's moniker

height 6 1/2in (16.5cm); width 26 1/4in (66.6cm); depth 18 1/2in (46.9cm)

\$2,000 - 3,000

Provenance

Estate of William P. Bishop, Scottsdale, Arizona

While the present lot is an editioned work, the artist's original sculpture that inspired this series is in the permanent collection of Brookgreen Gardens, South Carolina.

We are grateful to the artist for assisting with the catalog description.

195

STEVE KESTREL (BORN 1947)

Nestled In (Rabbit with Young)

patinated bronze, incised 'S. KESTREL © 15/21' with artist's moniker

height 6in (15.2cm); width 17in (43.1cm); depth 12 1/2in (31.7cm)

\$2,000 - 3,000

Provenance

Estate of William P. Bishop, Scottsdale, Arizona

We are grateful to the artist for assisting with the catalog description.



195

196 W

STEVE KESTREL (BORN 1947)

Trickster

1985

limestone, incised 'S. KESTREL 1985'

height 26 3/4in (67.9cm); width 5in (12.7cm); depth 6 1/2in (16.5cm)

\$4,000 - 6,000

Provenance

Estate of William P. Bishop, Scottsdale, Arizona

We are grateful to the artist for assisting with the catalog description.

196



197 W

STEVE KESTREL (BORN 1947)

Waverly (Koi)

patinated bronze, incised 'S. KESTRAL 13/21' with artist's moniker

height 9 3/4in (24.7cm); width 30 1/4in (76.8cm); depth 8 1/4in

(20.9cm)

\$3,000 - 5,000

Provenance

Estate of William P. Bishop, Scottsdale, Arizona

We are grateful to the artist for assisting with the catalog description.

197





198

198 W

MICHAEL TAYLOR (1926-1986)

Pair of Side Tables

1970s

cypress, fossil stone

height 26 and 27in (66 and 68.5cm); width 46 and 47in (116.8 and 119.3cm); depth 27in (68.5cm)

\$2,000 - 4,000

Literature

Stephen M. Salny, 'Michael Taylor Interior Design', W. W. Norton & Company, Inc., 2008, similar examples illustrated on p. 182 and 185



199

199 W

MICHAEL TAYLOR (1926-1986)

Coffee Table

1970s

timber, fossil stone

height 15 1/2in (39.3cm); width 60in (152.4cm); depth 28in (71.1cm)

\$2,000 - 4,000



200

200 W

MICHAEL TAYLOR (1926-1986)

Pair of Consoles

1970s

cypress, fossil stone

height 32in (81.2cm); width 48in (121.9cm); depth 20in (50.8cm)

\$3,000 - 5,000

Literature

Stephen M. Salny, 'Michael Taylor Interior Design', W. W. Norton & Company, Inc., 2008, similar examples illustrated on p. 182 and 185



201

201 W

MIMI LONDON (FOUNDED 1982)

Birch Bed

circa 2008

stained birch finished wood

approximate height 104in (264.1cm); width 72in (182.8cm); depth 94in (238.7cm)

\$1,800 - 2,500

Provenance

Private Collection, California



204



203



202



205

202 W

ANTHONY REDMILE (ACTIVE LATE 20TH CENTURY)

The Cow-ch

1960s

cowhide, patinated bronze studs, down filled

height 35in (88.9cm); width 96in (243.8cm); depth 35 1/2in (90.1cm)

\$2,500 - 3,500

Provenance

Albert King Antiques, London

Private Collection, Bel Air, California

203 W

ANTHONY REDMILE (ACTIVE LATE 20TH CENTURY)

The Cow-ch

1960s

cowhide, patinated bronze studs, down filled

height 35in (88.9cm); width 96in (243.8cm); depth 35 1/2in (90.1cm)

\$2,500 - 3,500

Provenance

Albert King Antiques, London

Private Collection, Bel Air, California

204 W

ANTHONY REDMILE (ACTIVE LATE 20TH CENTURY)

Ottoman

1960s

cowhide, patinated bronze studs, down filled

height 18in (45.7cm); width 48in (121.9cm); depth 48in (121.9cm)

\$800 - 1,200

Provenance

Albert King Antiques, London

Private Collection, Bel Air, California

205 W

DAVID PALOMBO (1920-1966)

Gate

circa 1960

welded and hammered iron, glass, apparently unmarked

height 79 1/2in (201.9cm); width 37 1/2in (95.2cm); depth 16in (40.6cm)

\$3,000 - 5,000



206



207



208



209

206 W

MIKE O'NEIL (ACTIVE LATE 20TH/EARLY 21ST CENTURY)

Rocking Chair

circa 2000

walnut

height 43in (109cm); width 25 1/2in (65cm); depth 46in (117cm)

\$3,000 - 5,000

Mike O'Neil was a long-time woodworker on the team at the Sam Maloof studio. Maloof's influence can be seen in the design and form of the offered lot.

207 W

MIKE O'NEIL (ACTIVE LATE 20TH/EARLY 21ST CENTURY)

Side Table

2002

walnut, signed 'Mike O'Neil 2002' on the underside
height 24in (61cm); diameter 23in (59cm)

\$1,500 - 2,500

208 W

SAM MALOOF (1916-2009)

Hanging Wall Cabinet

1960s

walnut, stamped 'designed made MALOOF california'

height 14in (35.5cm); width 56 1/4in (142.8cm); depth 20in (50.8cm)

\$2,500 - 3,500

209 W

MARIANNE VON MUNCHOW (BORN 1917)

Tapestry

1969

wool, with designer and weaver initials woven into the border

'VK-1 MvM 1969'

length 69in (175.2cm); width 66 3/4in (169.5cm)

\$1,500 - 2,500



210

210
RODOLFO NIETO (1936-1988)

Sueno de Ocelotl
 circa 1965
 oil on canvas, incised 'Nieto' upper right and signed lower right, signed 'Rodolfo Nieto' and titled verso
 25 1/2 x 21 1/4in (64.7 x 54cm)

\$7,000 - 9,000

Provenance

Collection of Charles and Muriel Kittel

211 W
SAM MALOOF (1916-2009)

Dining Table
 1967
 walnut, signed and inscribed 'Table made in the 60s refinished April 2008 Sam Maloof'
height of table 28 3/4in (73cm); width 86in (218.4cm); depth 50in (127cm)

\$6,000 - 8,000

212 W
SAM MALOOF (1916-2009)

Group of Six Dining Chairs
 1967
 walnut, leather upholstery, underside of each chair stamped 'designed made MALOOF california 10/67', each chair variously numbered and with family name
height of chairs 37 3/4in (95.8cm); width 20 3/4in (52.7cm); depth 21 1/4in (53.9cm)

\$6,000 - 8,000



211



212



213

213 W

CARL NADIER (ACTIVE CIRCA 1970)

Set of Eight Custom Otis Elevator Door Panels

1972-73

for the Standard Oil Building, San Francisco, California, enameled ceramic, steel

height of each 96in (243.8cm); width 24in (60.9cm); depth 2in (5cm)

\$8,000 - 12,000

The offered lot comprises half of the original sixteen panels that were installed at the Standard Oil building at 225 Bush Street, San Francisco. Six of the panels ultimately went missing and one pair of panels is in the permanent collection of the Chevron Museum, San Ramon, California.

214 W

FRANCESCO SOMAINI (BORN 1926)

Racconto nella notte III [III variante]

1962

partially polished pewter on iron base, signed and numbered "Somaini 62.65", circular stamp "ESEGUITO IN LOMAZZO COMO ITALIA"
height 12in (30.5cm); length 26 1/4in (66.7cm); width 21 1/4in (54cm)

\$5,000 - 7,000



214



215

215

FERNANDO BOTERO (BORN 1932)

Snake

1975

watercolor, graphite, and sanguine on paper, signed and dated lower right 'Botero 75'

17 1/4 x 14in (43.8 x 35.6cm)

\$12,000 - 18,000

216^W

JOHN DICKINSON (1920-1982)

Custom Dining Table/Desk

1975

plaster and wood

height 30in (76.3cm); width 42in (106.7cm); length 96in (243.8cm)

\$15,000 - 25,000

Provenance

Cyril Peletz, San Francisco, California

A graphite on paper rendering of the offered lot is in the permanent collection of SFMOMA.



216

217 W

ELIZABETH GAROUSTE (BORN 1946)

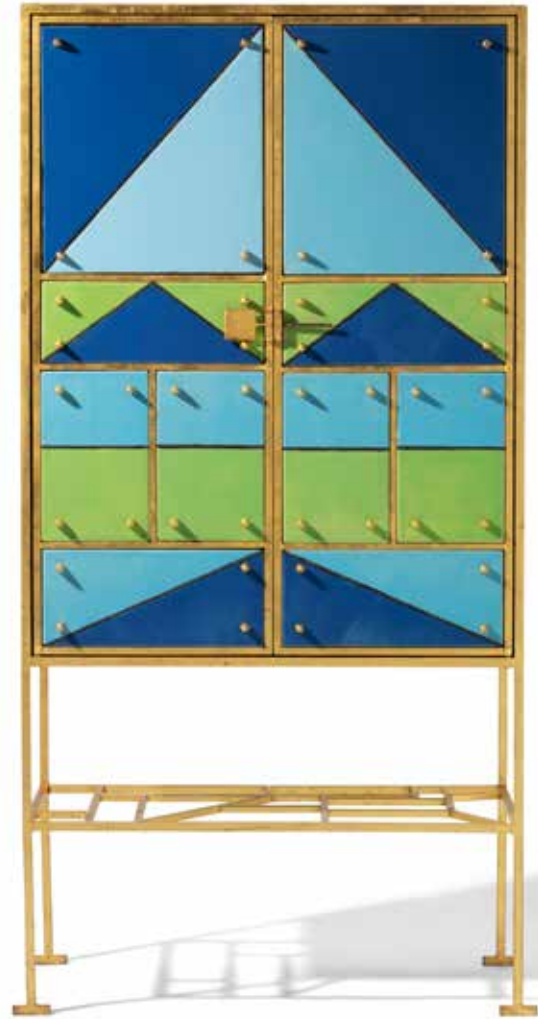
Arlequin Cabinet

2002

gilt iron, glazed ceramic, ebonized wood, stamped 'EG' and 'P. BASSE
FERRONIER POUR EG'

height 63 1/4in (160cm); width 31 1/2in (80cm); depth 17in (43cm)

\$18,000 - 25,000



217



218

218 W

STUDIO JOB (FOUNDED 1998)

Pitchfork / Shovel

2008

from the Farm Series, edition of six, solid polished bronze, each stamped 'JOB 08 3/6'

shovel length 46in (117cm); width 9in (23cm); pitchfork length 46 1/2in (118cm); width 8 3/4in (22cm)

\$10,000 - 15,000

Provenance

Private Collection, London

Literature

Job Smeets, Nynke Tynagel, 'Book of Job', Rizzoli, 2010, p. 208
(these examples illustrated)



219

219

HASSEL SMITH (1915-2007)

Untitled

1996

oil on paperboard, initialed and dated upper right 'HWS 96'

16 1/4 x 11 1/2 in (41.3 x 29.2cm)

\$2,000 - 4,000

Provenance

Bonhams, San Francisco, 'Made in California', 3 May 2010, Lot 28
Private Collection, Northern California

220

JEFF KOONS (BORN 1955)

Bread With Egg (Green)

1995

plaster and tempera, signed, inscribed, numbered and dated on the underside 'Special Edition For Armitage Foundation Koons '95 172/250'

height 2in (5.1cm); diameter 5 1/2in (14cm)

\$1,500 - 2,500

Provenance

Private collection, Los Angeles
Acquired from the above by the present owner

221

PAOLO VENINI (1895-1959)

Diamante Bowl

designed 1934-36, executed 1945-66
glass, acid-etched on underside 'venini murano italia'

height 6in (15.2cm); length 12in (30.5cm);
width 9 3/4in (24.8cm)

\$2,000 - 3,000

Provenance

Private Collection, New York



220



221



222

222 W

SHIRO KURAMATA (1934-1991)

'How High The Moon' Lounge Chair

designed 1986-87

for Vitra, nickel-plated steel mesh, applied manufacturer's label

height 28 1/4in (71.8cm); width 37 3/8in (94.9cm); depth 32in (81.3cm)

\$3,000 - 5,000

Provenance

Vitra, Inc., New York

Acquired directly from the above by the present owner circa 2002

Examples of this chair are held in the Victoria & Albert Museum and the Metropolitan Museum of Art.

223

THOM MAYNE (BORN 1944)

Walker Art Center Installation Model (A Component)

1989

wood, paint and metallic pigment, signed and dated on underside 'Thom Mayne 6/89'

height 4 3/4in (12.1cm); width 7 3/4in (19.7cm); depth 6in (15.3cm)

\$1,500 - 2,500



223



224

224 W

JOHN MCNAUGHTON (ACTIVE 20TH CENTURY)

Jewelry Cabinet

1984

polychromed poplar and colorcore, incised along edge

'JOHN MCNAUGHTON 1984'

height 64 (162.6cm); width 16 1/4in (41.3cm); depth 11in (28cm)

\$4,000 - 6,000

Literature

Akiko Busch, *Twice Gifted, The Gallery at Workbench*, November 13-December 22, 1986, 'Metalsmith Magazine', Spring 1987

Exhibited

'Twice Gifted', The Gallery at Workbench, New York, November 13-December 22, 1986



225 W

RON ARAD (BORN 1951)

Split Table

designed 1989

for Poltronova, walnut and steel

height 29 1/2in (74.9cm); width closed 63in (160cm);

width fully extended 152in (386cm); depth 34 1/2in (87.6cm)

\$10,000 - 15,000

Approximately fifteen examples of the present lot were produced.

Provenance

Private Collection, Paris

225

226

KEITH HARING (1958-1990)

Embellished Louis Vuitton Suitcase

early 20th century/1984

leather, brass, black ink, signed with artist's monogram, dated '84', stamped with marks for Louis Vuitton, and with Fun Gallery sticker on underside

height 8in (20cm); width 24in (61cm); depth 15 3/4in (40cm)

\$10,000 - 15,000



226



227

CONSTANTIN (BORN 1955) & LAURENE BOYM (BORN 1964)

24 Objects from the Buildings of Disaster Series

1998-2012

cast resin, each from the edition of 500 plus 25 AP

height of tallest 6 1/2in (16.5cm)

\$4,000 - 6,000



228 W

ZHENG LU (BORN 1978)

Mao Never Down

2007

stainless steel, edition 1/8, signed in Chinese, dated and numbered
height 90in (228.6cm); diameter at widest 56in (142.2)

\$30,000 - 50,000

Provenance

Heather James Fine Art, Palm Desert, CA

Property From an Iconic Beverly Hills Interior

Lots 229 - 274



229

229 W

LOUIS DUROT (BORN 1939)

Mirror

designed circa 1980

polyurethane foam, glass, signed on the reverse 'piece unique LOUIS DUROT' with artist's signature

height 45in (115cm); width 34 3/4in (88cm); greatest depth 5in (12cm)

\$800 - 1,200

230 W

MODERNIST

Curved Console Table

circa 2007

black lacquered wood

height 27 1/4in (69.2cm); width 53 1/2in (135.8cm); depth 17in (43.1cm)

\$1,000 - 1,500

231 W

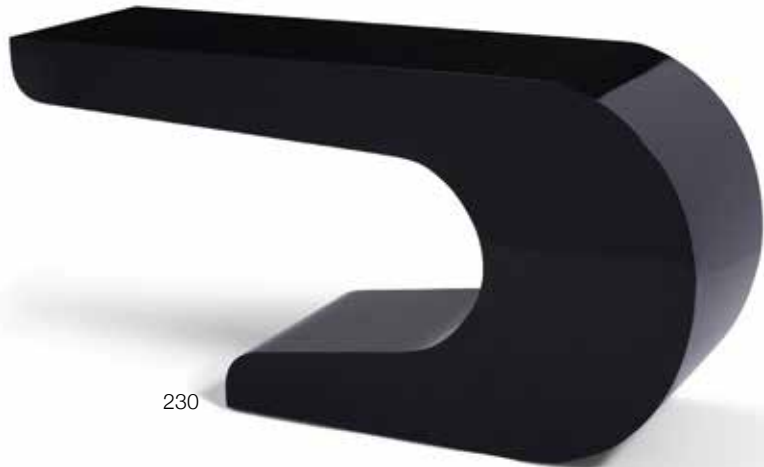
MODERNIST

Pair of Lounge Chairs

white leather, metal

height 37 1/4in (94.6cm); width 29 1/2in (74.9cm); depth 28in (71.1cm)

\$2,000 - 3,000



230



231

232 W

CONTEMPORARY

Pair of Open Armchairs

circa 2007

chromed steel, leather

height 28in (71.1cm); width 29 1/2in (74.9cm);

depth 34in (86.3cm)

\$3,000 - 5,000



232

233

RICHARD X. ZAWITZ (BORN 1946)

Tangle

circa 1982

jointed plastic, manufacturer label affixed

length as photographed 35in (88.9cm); dimensions

variable

\$500 - 700



233

234 W

CONTEMPORARY

Coffee Table

circa 2007

fiberglass, glass

height 17 1/2in (44.4cm); diameter 45 1/2in

(115.5cm)

\$1,200 - 1,800



234



235



238



236



237

235 W
CUSTOM
 Curved Sofa
 circa 2007
 grey suede, brass
 height 31 1/2in (80cm); length 93in (236.2cm); depth 39in (99.1cm)

\$1,200 - 1,800

236 W
MODERNIST
 Pair of Chests of Drawers
 shagreen, wood, glass tops
 height 27in (68.5cm); width 21in (53.3cm); depth 20in (50.8cm)

\$1,800 - 2,500

237 W
J. ROBERT SCOTT (FOUNDED 1972)
 Pair of Juliette Slipper Chairs
 circa 2007
 leather, with maker's label on the underside
 height 32 3/4in (83.5cm); width 31in (79cm); depth 38in (96cm)

\$1,500 - 2,000

238 W
MODERNIST
 Pair of Spiral Floor Lamps
 circa 2007
 brass, patinated metal
 height 62in (158cm); diameter of base 10 1/2in (27in)

\$2,000 - 3,000



239

239 W

CONTEMPORARY

Chest of Drawers
circa 2007

stained wood, patinated metal
height 44 1/2in (113cm); width 60in (152.4cm);
depth 20in (50.8cm)

\$2,500 - 3,500



240

240 W

ROGER ROUGIER (MID TO LATE 20TH CENTURY)

Female Torso Lamp
1970s

cast acrylic, with maker's label affixed to base
height 35in (88.8cm); width 9 3/4in (24.7cm); depth
8 1/4in (21cm)

\$500 - 700



241

241W

PIER GIACOMO AND ACHILLE CASTIGLIONI (1913-1968)

Pair of Arco Floor Lamps

designed 1962

for Flos, spun aluminum, Carrara marble, stainless
steel

height 94 1/2in (240cm); diameter of shade 12 1/2in
(31.7cm); depth approximately 74in (187.9cm)

\$1,200 - 1,800



242

242 W

MODERNIST

Banquette

circa 2007

leather upholstery, brass

height 32 1/4in (81.9cm); width 100 1/2in (255.3cm);

depth 50 1/2in (128.3cm)

\$1,000 - 1,500

243 W

MODERNIST

Center Table

circa 2007

composite black marble, brass, ebonized wood

height 29 1/4in (74.2cm); diameter 57 3/4in (146.6cm)

\$1,500 - 2,000



243



244

244 W

WARREN PLATNER (1919-2006)

Pair of Chairs

designed 1966

patinated steel, leather

height 28 3/4in (73cm); width 27in (69cm); depth 20in (51cm)

\$1,500 - 2,500

245 W

EL MAC (BORN 1980)

Prayer

2011

acrylic on wood panel, signed 'El Mac' and dated '2011'

lower right

48 x 36in (122 x 91.5cm)

\$4,000 - 6,000

246 W

MODERNIST

Curved Sectional Sofa

circa 2007

leather upholstery

height 33in (83.8cm); width approximately 144in (365.7cm);

depth approximately 93in (236.2cm)

\$2,000 - 4,000

247 W

MODERNIST

Curved Sectional Sofa

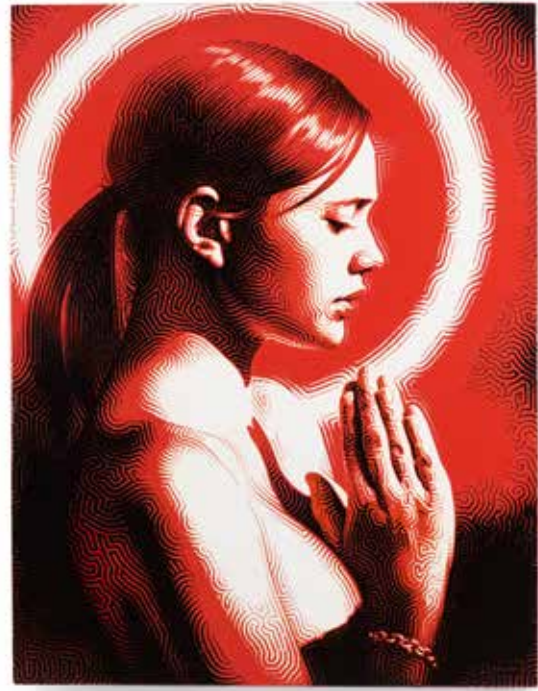
circa 2007

leather upholstery

height 33in (83.8cm); width approximately 144in (365.7cm);

depth approximately 93in (236.2cm)

\$2,000 - 4,000



245



246

247



248

248 W

RETNA (BORN 1979)

Untitled

circa 2007

acrylic on canvas, signed along lower right edge
96 x 64in (243.8 x 162.6cm)

\$35,000 - 45,000



249

249 W

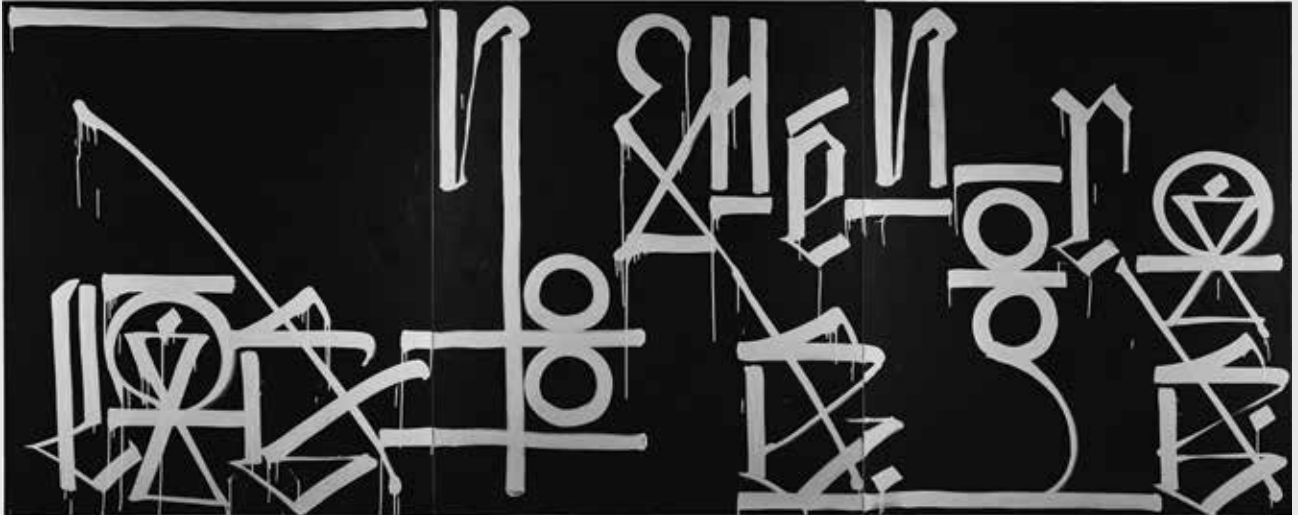
RETNA (BORN 1979)

Untitled (Dripping Composition)

circa 2007

acrylic on canvas, signed along lower right edge
96 x 64in (243.8 x 162.6cm)

\$18,000 - 25,000



250 W

RETNA (BORN 1979)

Untitled (Triptych)

circa 2007

acrylic on canvas, signed along lower right edge

each canvas 72 x 60in (182.9 x 152.3cm); overall 72 x 180in

(182.9 x 457.2cm)

\$60,000 - 80,000



251

251 W

MODERNIST

Group of Four Bar Stools

circa 2007

leather, acrylic, metal

height 36 3/4in (93.3cm); width 18in (45.7cm); depth 21 1/2in (54.6cm)

\$1,200 - 1,800

252 W

MODERNIST

Group of Three Table Objects

early 21st century

comprising two vases and a bowl, glass, glazed

earthenware, brass, the pink glass vase and brass stand with incised artist's initials 'E.S.'

height of tallest 18 1/2in (46.9cm); width 11in (27.9cm); depth 9 1/4in (23.4cm)

\$800 - 1,200

253 W

CUSTOM

Pair of Lounge Chairs

circa 2007

leather, gilt metal

height 26in (66cm); width 26in (66cm); depth 28in (71cm)

\$2,500 - 3,500



252



253





254

254 W

CUSTOM

Set of Ten Dining Chairs

circa 2007

leather, acrylic, comprising a pair of armchairs and eight side chairs

height of armchairs 38in (97cm); width 23in (59cm); depth 25in (64cm)

\$2,500 - 3,500

255 W

CONTEMPORARY

Illuminated Red Frond Sculpture

circa 2007

resin, lacquered wood, uplight

overall height 72 (183cm); width 14in (36cm); depth 14in (36cm)

\$800 - 1,200



255



256

256 W

MODERNIST

Pair of Waterfall Console Tables
patchwork marble veneered wood
height 32in (81.2cm); width 79in (200cm); depth
24in (60.9cm)

\$2,000 - 3,000

257 W

MODERNIST

Pair of Armchairs
white leather
height 30 1/2in (77.4cm); width 32in (81.2cm);
depth 28in (71.1cm)

\$1,000 - 2,000



257



258

258 W

MODERNIST

Pair of Urns
circa 2007
black marble
height 28 1/2in (72.3cm); diameter 16 1/2in
(41.9cm)

\$1,000 - 2,000

259 W

PAUL EVANS (1931-1987)

Pair of Cityscape Settees
circa 1975
for Directional, patchwork chrome
upholstery, one settee stamped and
height 27 1/4in (69.2cm); width 54
(83.8cm)

\$7,000 - 9,000



259



260

260

KELLY WEARSTLER (BORN 1967)

Knot
circa 2010
burnished and gilt bronze, etched 'Kelly Wearstler'
height 6in (15.3cm); width 10in (25.4cm); length 13 1/4in (33.7cm)

\$300 - 500

261 W

MODERNIST

Pair of Lobed Coffee Tables
circa 2007
black lacquered wood, brass, glass
height of each 24 1/8in (61cm); width 21in (54cm); depth
21in (54cm)

\$800 - 1,200



261



262

262 W

MODERNIST

Group of Outdoor Furniture

powder coated metal, faux leather, comprising two chairs, two coffee tables and two side tables

height of chair 43 3/8in (110.1cm); width 36 3/4in (93.3cm); depth 31in (78.7cm)

\$1,800 - 2,500

263 W

MODERNIST

Abstract Sculpture

circa 2007

compressed aluminum, apparently unsigned

height 90 1/2in (229.8cm); width 17in (43.1cm); depth 15in (38.1cm)

\$1,500 - 2,500

264 W

MODERNIST

Fifteen Light Floor Lamp

chromed and enameled metal, milk glass

height 72in (183cm); width 16in (41cm)

\$800 - 1,200



264



263



265 W

EL MAC (BORN 1980)

Ixtaccihuatl

2008

acrylic and auto paint on metal car hood, signed and dated lower right 'MAC 2008'

height 43 3/4in (111.2cm); width 54 1/2in (138.5cm); depth 2in (5.1cm)

\$2,000 - 3,000

266 W

RICHARD MEIER (BORN 1934)

Pair of Armchairs

for Knoll, model 810A, black lacquered wood, each with artist's initials incised on underside

height 27 1/2in (69.8cm); width 21in (53.3cm); depth 20in (50.8cm)

\$1,500 - 2,500

265



267



266

267 W

MCINTOSH (FOUNDED 1949)

MA6600 Integrated Amplifier

together with a Shanling MC30 Music Center CD Player

height 7 5/8in (19.4cm); width 17 1/2in (44.4cm); depth 18 3/4in (47.6cm)

\$2,000 - 3,000

268 W

BOWERS AND WILKINS (FOUNDED 1966)

Pair of 802 Diamond Floorstanding Speakers

21st century

lacquered, faux leather, chromed metal, each with the firm's tags and model number

height 46 1/2in (118cm); width 12in (31cm); depth 24in (61cm)

\$2,500 - 3,500



268



269



270

269 W

MODERNIST

Rounded Rectangular Console Table
black lacquer, mirrored glass
*height 30in (76.2cm); width 65in (165.1cm);
depth 16in (40.6cm)*

\$800 - 1,200

270 W

MODERNIST

Rounded Rectangular Console Table
black lacquer, mirrored glass
*height 30in (76.2cm); width 65in (165.1cm);
depth 16in (40.6cm)*

\$800 - 1,200

271

ITALIAN

Pair of Table Lamps
milk glass
*height 14 3/4in (37.4cm); width 8 and 9in
(20.3 and 22.8cm); depth 14 3/4 and 15
1/2in (37.4 and 39.3cm)*

\$1,000 - 2,000



271

272 W

MODERNIST

Group of Outdoor Furniture
powder coated metal, comprising two chairs and one
coffee table
*height of chair 43 3/8in (110.1cm); width 36 3/4in
(93.3cm); depth 31in (78.7cm)*

\$1,000 - 2,000

273 W

CONTEMPORARY

Illuminated Wall Sculpture
circa 2007
enameled metal, with multi-color capability
*height 74 1/2in (189.2cm); width 74 1/2in (189.2cm);
depth 1 1/2in (3.8cm)*

\$3,000 - 5,000



272



273

274 W

DAVID WEEKS STUDIO (FOUNDED 1996)

Cernan Floor Lamp
2013
model 313, edition of seven, powder coated steel, the
underside with maker's label, signed and numbered '4/7'
*height 66 3/4in (169.5cm); width 30in (76.2cm); depth 16
1/2in (41.9cm)*

\$800 - 1,200



274



275

275 W

RICK BECK (BORN 1960)

Deep Throat

early 21st century

glass, metal

height 63 1/2in (161.3cm); width 30 1/2in (77.5cm); depth 13 in (33cm)

\$5,000 - 7,000

Provenance

Heller Gallery, New York

Private Collection, Florida, acquired directly from the above, 1998



276

276 W

SILVIA LEVENSON (BORN 1957)

Cenetta Intima (Table for Two)

1998

kiln cast glass, wood, apparently unsigned

height 16 1/2in (41.9cm); width 53 1/2in (135.8cm); depth 24 1/2in (62.2cm)

\$1,000 - 2,000

Provenance

The Bullseye Connection Gallery, Oregon

Private Collection, Florida, acquired directly from the above, 2004

277 W

BERTIL VALLIEN (BORN 1938)

Head on Pedestal #12

1998

cast glass, wood, metal base, base marked

'8BVAUIV 979262 7/8' in black ink

height overall 73 3/4in (187.3cm); width of base 14in (35.5cm); depth 13 3/4in (34.9cm)

\$2,000 - 3,000

Provenance

Savage Fine Art, Portland, Oregon

Acquired from the above by the present owner, 1998



277

278 W

BERTIL VALLIEN (BORN 1938)

Resting Head

fourth quarter 20th century

for Kosta Boda, cast glass, composite stone base,

the underside of the head incised 'B. Vallien KOSTA

BODA UNIQUE 88 VAVN 999272'

overall height 40 1/2in (102.8cm)

\$3,000 - 5,000



278

279 W

ENRICO DONATI (1909-2008)

Hello Below II

1972

oil and sand on canvas, signed lower right 'donati',
signed, titled, and dated verso
50 x 40in (127 x 101.6cm)

\$5,000 - 7,000

Provenance

Staempfii Gallery, New York

Mr. and Mrs. Robert Sarnoff, New York

Mrs. Robert Sarnoff, Los Angeles



279

280

AFTER JEFF KOONS (BORN 1955)

Cracked Egg (Red)

2008

aluminum with red glaze, accompanied by
Los Angeles County Museum of Art invitati
box, from the edition of 1000
height 4 1/2in (11.4cm)

\$1,000 - 1,500

Provenance

Private Collection, Los Angeles

Acquired from the above by the present ov



280

281

RICHARD RITTER (BORN 1940)

Group of Two Vases

1970-76

murrini glass, each with artist's signature, the dark
blue vase with incised date '1976', the white and blue
vase with label to the base

height 4 3/4in and 5in (12cm and 12.7cm); diameter
5in and 5 1/4in (12cm and 13.3cm)

\$1,000 - 1,500

Provenance

Private Collection, California



281



282



283



284

282 W

TSUYOSHI INOUE (BORN 1970)

Pedestal 0^1^0

1990s

laminated glass, metal, unsigned

height overall 62 1/4in (158.1cm); width of base 30in (76.2cm);
depth of base 17 3/4in (45cm)

\$2,500 - 3,500

Provenance

Cine Equipment, Tucson, Arizona, 1997

283 W

JANUSZ WALENTYNOWICZ (BORN 1956)

Jesuis un Pont, Je Suis un Pont

1990

glass, steel, oil paint, enamel, paint, signature etched on the reverse

'Janusz Walentynowicz', indistinctly numbered
height 23 5/8in (59.9cm); width 26 1/2in (67.3cm); depth 6 1/2in
(16.5cm)

\$1,200 - 1,800

Provenance

Marx Saunders Gallery, Ltd, Chicago

Private Collection, Florida, acquired directly from the above, 1997

The present lot is listed and illustrated on the artist's website.

284 W

THERMAN STATOM (BORN 1953)

Untitled (chair)

plate glass with glass elements, found objects, paper, graphite and
paint

height 45in (114.3cm); width 30in (76.2cm); depth 23 1/2in (59.7cm)

\$2,500 - 3,500



285



286



287

285 W

DONALD LIPSKI (BORN 1947)

Water Lillies #5

1990

glass, onions, solution

height 5in (12.7cm); width 39in (99cm); depth 5in (12.7cm)

\$1,500 - 2,000

Provenance

Experimental Glass Workshop, Brooklyn, New York

286 W

DAN DAILEY (BORN 1947)

Cupola Chandelier

late 20th century

blown glass, unsigned

drop 50 1/4in (127.6cm); diameter of shade 17in (43.1cm)

\$6,000 - 8,000

Provenance

Acquired directly from the artist

287 W

JOHN LEWIS (BORN 1942)

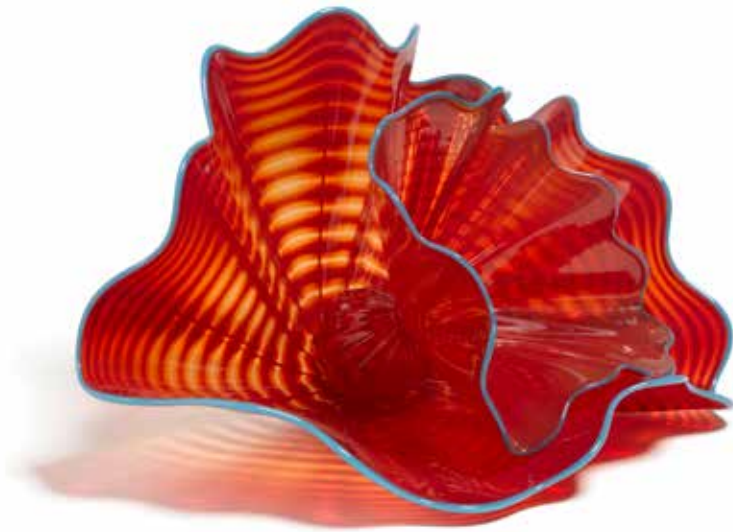
Coffee Table

1980s

cast glass

height 20 3/4in (52.7cm); width 31 3/4in (80.6cm); depth 16in (40.6cm)

\$3,000 - 5,000



288

288

DALE CHIHULY (BORN 1941)

Red Seaform Set with Blue Lip Wrap

circa 2004

for Portland Press, blown glass, inscribed 'PP04'
largest element 10 x 12in (25.5 x 30.5cm)

\$3,000 - 5,000

289

DALE CHIHULY (AMERICAN, BORN 1941)

Macchia

1983

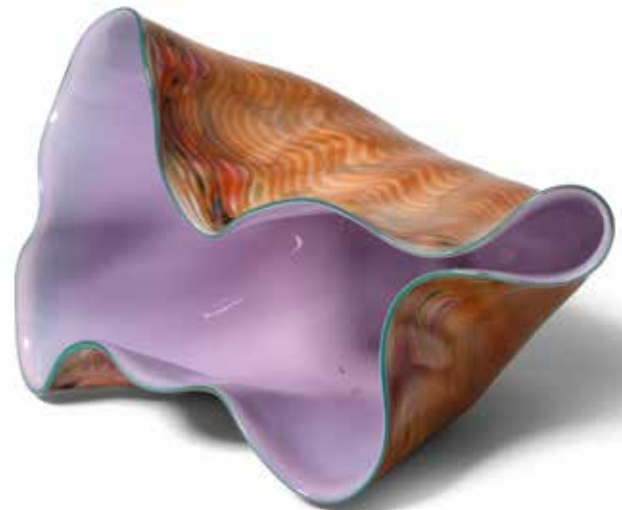
blown glass, incised 'Chihuly 1983' on underside

height 5in (12.7cm); width 9 3/4in (24.7cm); depth 4 3/4in (12cm)

\$1,500 - 2,500

Provenance

Gift of the artist to the present owner



289

290

DALE CHIHULY (BORN 1941)

Four Piece White, Clear and Black Seaform Set

1994

blown glass, incised 'Chihuly 94' on one element

length of longest element 9 1/2in (24.2cm); width 5in (12.7cm); height 2 1/4in (5.7cm)

\$3,000 - 5,000

Provenance

Private Collection, Beverly Hills, California



290



291 W

DALE CHIHULY (BORN 1941)

Clear and Gold Chandelier

2000

blown glass, registration number 00.2365.ch1

height 156in (396cm); width 156in (396cm)

\$100,000 - 150,000

Provenance

Private Collection, Commissioned from the Artist's Studio

The offered lot is a highly rare chandelier by Dale Chihuly having interior illumination with options to light the sculpture in a range of different neon colors. This work is the culmination of Chihuly's earliest forays in to neon installations and his continued refinement of glass blowing on a monumental scale. Chandeliers by Chihuly are in the permanent collections of the Cincinnati Art Museum, The Mint Museum and the Victoria & Albert Museum.

The present lot is being offered in situ.



292

292

WILLIAM MORRIS (BORN 1957)

Fish Sculpture

1998

blown glass, incised and dated on underside 'William Morris 1998'
5 x 6 x 2in (12.5 x 15 x 5cm)

\$6,000 - 8,000

Provenance

Private Collection, Pacific Northwest

The offered lot is accompanied by a Polaroid image taken by William Morris.

293 W

WILLIAM MORRIS (BORN 1957)

Charger

blown glass, apparently unmarked
height 4 1/4in (10.7cm); diameter 30 1/2in (77.4cm)

\$1,200 - 1,800



293



294

294

WILLIAM MORRIS (BORN 1957)

Cinerary Urn

2002

blown glass with powder, cord, incised on underside 'William Morris
2002'
height 8 1/4in (21cm); diameter 6in (15.3cm)

\$12,000 - 18,000

Provenance

Private Collection, Pacific Northwest

The offered lot was made by William Morris in honor of his pet wolf.



295 W

WILLIAM MORRIS (BORN 1957)

Canopic Jar (Giant Eland)

2004

patinated bronze, signed 'William Morris 6/8 2004'
height 46in (116.8cm)

\$40,000 - 60,000

Literature

Gary Blonston, 'William Morris Artifacts/Glass', Abbeville Press Publishers, New York, 1996, p. 21 for an illustration of a Giant Eland Canopic Jar realized in glass.

This magnificent jar with animal form cover relates to the artist's iconic Canopic Jar blown glass series created in 1995. Bonhams New York achieved the world record price at auction for William Morris on June 14, 2013 with the sale of Canopic Jar: Sable Antelope. A limited number of similar jars were produced in bronze. The jar on offer is from an edition of eight.

The Collection of Diane and Marc Grainer



296

296

BODIL MANZ (BORN 1943)

Two Vessels

circa 1995

porcelain, each signed 'Bodil Manz' on underside with artist's mark

height of tallest 7 1/2in (19.1cm); diameter 9in (22.8cm)

\$1,500 - 2,500

Provenance

Galerie Besson, London

297

ANTONIA SALMON (BORN 1959)

Group of Three Tall Necked Vases

2001

burnished and smoke-fired thrown stoneware, each signed with artist's mark on underside

height of tallest 10 3/4in (27.3cm); diameter 7 1/2in (19.1cm)

\$1,000 - 1,500

Provenance

Barbican Centre, London

Exhibited

Charlotte, North Carolina, Mint Museum of Craft + Design, 'Contemporary British Studio Ceramics: The Grainer Collection', October 1, 2010 - March 13, 2011



297

298

JON MIDDLEMISS (BORN 1949)

Optical Cube Vessel

glazed stoneware, impressed momogram on underside

height 8 1/4in (21cm); width 12 1/2in (32cm); depth 6 1/2in (17cm)

\$1,500 - 2,000

Provenance

Hart Gallery, London



298

299 W

FRED BAIER (BORN 1949)

Mirror with Toroid

1996

glass and wood, signed and dated verso 'Fred Baier 1996'
height 44in (111.8cm); width 44in (111.8cm); depth 15in (38.2cm)

\$10,000 - 15,000

Provenance

Acquired directly from the artist by the present owner, 1996



299



300

300 W

NICHOLAS RENA (BORN 1963)

Ritual Vessel

1999

press-molded and painted earthenware, apparently unsigned
height 11 1/2in (29.3cm); length 20in (50.8cm); width 16 1/4in (41.3cm)

\$3,000 - 4,000

Provenance

Oxford Ceramics Gallery, Oxford, UK

Exhibited

Charlotte, North Carolina, Mint Museum of Craft + Design,
'Contemporary British Studio Ceramics: The Grainer Collection',
October 1, 2010 - March 13, 2011

301 W

DONALD FORTESCUE

Assay Table

1995

wood, patinated metal, apparently unmarked
height 23in (58.4cm); diameter 19 1/4in (48.8cm)

\$2,000 - 3,000

Provenance

Acquired directly from the artist by the present owners, 1995



301



304



302



303



305

302

RICHARD SLEE (BORN 1946)

Flower

1989

glazed earthenware, signed in underglaze 'RICHARD SLEE'
height 15 3/4in (40cm); diameter 8in (20cm)

\$3,000 - 5,000

Exhibited

Charlotte, North Carolina, Mint Museum of Craft + Design,
'Contemporary British Studio Ceramics: The Grainer Collection', October
1, 2010 - March 13, 2011

304 W

IVANA SRAMKOVA (BORN 1960)

Red Torso

1997

cast glass

height 55in (139.5cm); width 21in (53cm); depth 12in (30.5cm)

\$3,000 - 5,000

Provenance

Studio Glass Gallery, London
Acquired from the above, 1998

303

RICHARD SLEE (BORN 1946)

Plant

1989

glazed earthenware, signed in underglaze 'RICHARD SLEE'
height 15 1/2in (39cm)

\$3,000 - 5,000

Exhibited

Charlotte, North Carolina, Mint Museum of Craft + Design,
'Contemporary British Studio Ceramics: The Grainer Collection', October
1, 2010 - March 13, 2011

305 W

RICHARD SLEE (BORN 1946)

The Spy

circa 2005

glazed ceramic, brass, apparently unmarked

height 68 1/4in (173cm); width 12 1/2in (31.7cm); depth 9in (22.8cm)

\$4,000 - 6,000

Provenance

Barrett Marsden Gallery, London



306



307

306 W

ROBERT DAVID BRADY (BORN 1946)

Everness

1997

mixed media, signed on the reverse with artist's initials 'R.B. 97'
height 61in (154.9cm); width 9 1/2in (24.1cm); depth 12in (30.4cm)

\$4,000 - 6,000

Provenance

Braunstein/Quay Gallery, San Francisco

307 W

ROBERT DAVID BRADY (BORN 1946)

Chock

1997

mixed media on wood

height 61in (154.9cm); width 10in (25.4cm); depth 12in (30.4cm)

\$4,000 - 6,000

Provenance

Braunstein/Quay Gallery, San Francisco

308 W

LOUIS MUELLER (BORN 1943)

He Fought Dragons With a Sword Made of Tears

1996

patinated and oil painted bronze, apparently unsigned

height 65in (165.1cm); width 32 3/4in (83.1cm); depth 20in (50.8cm)

\$3,000 - 5,000

Provenance

Franklin Parrasch Gallery, New York



308



309 W

DAVID REEKIE (BORN 1947)

The Engineers

1994

cast glass and wood, signed, titled and dated along left edge
'The Engineers, David Reekie, Norwich '94'

height 26 1/2in (67.3cm); width 29 1/4in (74.3cm); depth 8 1/4in
(21cm)

\$6,000 - 8,000

Provenance

Jerwood Glass Exhibition, Crafts Council, London

309



310 W

JUN KANEKO (BORN 1942)

Untitled (Plate)

1982

glazed earthenware, incised underneath 'Kaneko 82'

height 24 3/4in (62.8cm); width 19 5/8in (49.8cm); depth 4in
(10.2cm)

\$3,000 - 5,000

Provenance

Pewabic Pottery, Detroit

310



311

311 W

THERMAN STATOM (BORN 1953)

Blue Raven

1997

mixed media, glass, apparently unsigned
height 49 1/4in (125cm); width 31in (78.7cm);
depth 4in (10.1cm)

\$3,000 - 5,000

Provenance

Maurine Littleton Gallery, Washington, DC

312 W

RENE ROUBICEK (1922-2018)

Sculpture

1992

blown glass and plate glass, incised 'Roubicek 1992'
height 10 3/4in (27.3cm); width 21 1/4in (54cm);
depth 21 1/4in (54cm)

\$2,000 - 3,000

Provenance

The Studio Glass Gallery, London



312



313

313 W

COLIN REID (BORN 1953)

Coffee Table

1999

kiln-cast glass, stained wood, the underside of the glass
with etched signature 'Colin Reid 1999 R850'
height 19 1/2in (49.5cm); width 38in (96.5cm);
depth 38 1/4in (97.1cm)

\$8,000 - 10,000

Provenance

Contemporary Applied Arts, London, 1999



314 W

STEPHEN DE STAEBLER (1933-2011)

Leg With Double Column

1996-98

pigmented clay, incised to base 'DE STAEBLER 1996'
height 38in (96.5cm); width 9in (22.9cm); depth 11 1/4in (28.6cm)

\$10,000 - 15,000

Provenance

Franklin Parrasch Gallery, New York

Exhibited

New York, Franklin Parrasch Gallery, 'Stephen De Staebler: Recent Work', May 13 – June 26, 1998



315 W

STEPHEN DE STAEBLER (1933-2011)

Winged Figure Pointing

2003

bronze, incised to base 'DE STAEBLER 2003' and numbered 1/3
height 82 1/2 in (209.6cm); width 50 in (127cm); depth 21 in (53.3)

\$40,000 - 60,000

Provenance

Franklin Parrasch Gallery, New York

Exhibited

New York, Franklin Parrasch Gallery, 'Stephen De Staebler: Recent Work', February 17 - April 9, 2005

Vero Beach, Florida, Vero Beach Museum of Art, 'Body Language: The Figure in Sculpture', February 14 - May 24, 2009



316

316
LAURANCE SIMON (BORN 1959)

Three Graces Candelabrum
 circa 1990
 partially-glazed earthenware, apparently unsigned
 height 16 1/4in (41.3cm); width 12 1/2in (31.8cm); depth 5 1/2in (14cm)

\$1,000 - 1,500

Provenance

Crafts Council Gallery, Victoria & Albert Museum, London

Exhibited

Charlotte, North Carolina, Mint Museum of Craft + Design,
 'Contemporary British Studio Ceramics: The Grainer Collection',
 October 1, 2010 - March 13, 2011

317
LAURANCE SIMON (BORN 1959)

The Life of a Potter
 circa 1990
 glazed earthenware, incised underneath chaise longue 'Laurance'
 height 12 7/8in (32.8cm); length 11 1/2in (29.3cm); width 7 1/4in (18.4cm)

\$1,000 - 1,500

Provenance

Andrew Usiskin Gallery of Contemporary Art, London

318
AKIO TAKAMORI (1950-2017)

#3 San
 2005
 glazed earthenware, signed 'Akio'
 height 10in (25.4cm); width 8in (20.3cm); depth 6in (15.2cm)

\$2,000 - 3,000

Provenance

ASU Art Museum Ceramics Research Center, Tempe, AZ

319
LES LAWRENCE (BORN 1940)

New Vision - Tea Pot
 circa 1995
 porcelain with silkscreen monoprint and stainless steel, artist's
 label affixed to underside and numbered '#0120960'
 height 8 3/4in (22.3cm); length 13in (33cm); width 2 1/2in (6.4cm)

\$1,500 - 2,000



317



318



319



320

320 W

CLAIRE CURNEEN (BORN 1968)

Standing Figure I and Standing Figure (Two Works)

1996

porcelain, base of taller figure initialed 'CC'

height of tallest 25in (63.5cm); width 6 1/2in (16.5cm); depth 3 1/4in (8.3cm)

\$2,000 - 3,000

321

MICHAEL LUCERO (BORN 1953)

Anthropomorphic Vessel Form (New World Series)

1992

glazed earthenware, signed, dated and inscribed

'NEW WORLD SERIES, ARCATA, CA SUMMER

1992 MICHAEL LUCERO'

height 21 1/2in (54.6cm); width 18 1/4in (46.3cm);

depth 9in (22.8cm)

\$5,000 - 7,000

Provenance

Franklin Parrasch Gallery, New York



321 (front and back illustrated)



322

322

GLENYS BARTON (BORN 1944)

Head

1980

porcelain, apparently unsigned

height 15in (38.2cm); width 8 3/4in (22.3cm); depth 11in (28cm)

\$3,000 - 5,000

Provenance

Cowan's Auctions, Cincinnati, Ohio, 6 November 2010, Lot 51



323

323 W

PAUL SOLDNER (BORN 1921)

Pedestal Piece 90-26

1990

glazed ceramic, inscribed in black on the base '9026 9026'
height 28 1/2in (72.3cm); width 34 1/2in (87.6cm); depth 14 3/4in (37.4cm)

\$3,000 - 5,000

Provenance

Schneider Gallery, Chicago

324

WAISTEL COOPER (1921-2003)

Vessel

circa 1970

glazed stoneware, signed in glaze 'Waistel'
height 9in (23cm); diameter 11in (28cm)

\$1,000 - 1,500

Provenance

Paul Rice, London

Exhibited

Charlotte, North Carolina, Mint Museum of Craft + Design,
'Contemporary British Studio Ceramics: The Grainer
Collection', October 1, 2010 - March 13, 2011



324



325

325

RICHARD NOTKIN (BORN 1948)

Perpetual Motion II

1996

stoneware and patinated bronze, signed and dated on
underside 'Notkin 1996'

height 6 1/8in (15.5cm); length 17 1/2in (44.5cm); width 11in (27.9cm)

\$5,000 - 7,000

Provenance

The Clay Studio, Philadelphia



326 (front and back illustrated)

326

PETER VOULKOS (1924-2002)

Charger

1973

stoneware, gouged and with push throughs, glaze mark 'VOULKOS 73'

diameter 18 3/4in (47.5cm); depth 3 1/2in (9cm)

\$6,000 - 8,000

327 W

RALPH BACERRA (1938 - 2008)

Portrait Vessel

1993

glazed whiteware, signed and dated on underside 'Bacerra 93'

height 34 3/4in (88.3cm); width 7 1/2in (19cm); length 18in (45.8cm)

\$12,000 - 18,000

Provenance

Peter Joseph

Garth Clark Gallery, New York



327



328

328

PETER VOULKOS (1924-2002)

Covered Tureen

1953

wheel-thrown gas-fired stoneware with wax resist decoration and semi-matte and iron-bearing glaze, inscribed 'Voulkos', '53. 2270 B49' in red paint, remains of a paper label
height 14 1/2in (37cm); diameter 14 1/4in (36.3cm)

\$3,000 - 5,000

Peter Voulkos won the first prize in the pottery category for this tureen at the Eighth National Decorative Arts and Ceramics Exhibition at the Wichita National in 1953

Provenance

Private Collection, Florida

Bonhams, Los Angeles, 'Made in California', 4 May 2009, Lot 9044
 Estate of Paul J. Coady

Exhibited

Eighth National Decorative Arts and Ceramics Exhibition, The Wichita Art Association, Wichita, Kansas, April 11-May 11, 1953

Literature

Eighth National Decorative Arts and Ceramics Exhibition, The Wichita Art Association, Wichita, Kansas, April 11-May 11, 1953, Brochure, checklist # 344

'Show Time: Eighth National Decorative Arts-Ceramic Exhibition,'
 Ceramics Monthly, July 1953, p.18, illustration



329

329

PETER VOULKOS (1924-2002)

Vase

1950s

glazed ceramic, incised 'Voulkos' on the underside of the base
height 9in (22.8cm); diameter 7 1/2in (19cm)

\$1,800 - 2,500



330

330

PETER VOULKOS (1924-2002)

Vessel

circa 1955

glazed ceramic, signed 'Voulkos' on the underside in glaze
height 14in (35.5cm); width 10 1/4in (26cm); depth 7 1/2in (19cm)

\$3,000 - 5,000



331



332



331

TOSHIKO TAKAEZU (1922-2011)

Charger

21st century

glazed ceramic, with artist's initials on the underside of the base and with remnants of old labels

height 4in (10.1cm); diameter 19 1/4in (48.8cm)

\$1,000 - 2,000

332

JUNE SCHWARCZ (1918-2015)

Bowl

electroplated copper foil and enamel, iron plated, incised 'Schwarcz 538' on the base

height 3in (7.6cm); diameter 9in (22.8cm)

\$2,000 - 3,000

333

JUNE SCHWARCZ (1918-2015)

Bowl

electroplated copper foil and enamel, iron plated, indistinctly signed on underside

height 5 1/2in (13.9cm); diameter 7in (17.7cm)

\$2,500 - 3,500



333

334

JB BLUNK (1926-2002)

Figure Undressing

1961

oil on canvas, signed with monogram and dated upper right '61',
titled and dated verso

30 x 20 1/8in (76.2 x 51.2cm)

\$2,000 - 3,000

Provenance

Miller Family Collection



334



335

335

JB BLUNK (1926-2002)

Group of Four Cups

circa 1969

glazed ceramic, each with artist's initials, one with further
inscription 'J. MIX'

height of tallest 7 1/4in (18.4cm); diameter 3in (7.6cm)

\$2,000 - 4,000

336

JB BLUNK (1926-2002)

Platter

1955-70

glazed ceramic, apparently unsigned

height 1 1/2in (3.8cm); width 16 1/4in (41.2cm); depth 9 3/4in
(24.7cm)

\$1,500 - 2,500



336



337

337

JB BLUNK (1926-2002)

Group of Two Sculptures

mid-20th century

glazed ceramic, the larger work incised with artist's initials and additional inscription in ink 'JANE'

height of largest 1 3/4in (4.4cm); width 8in (20.3cm); depth 12in (30.4cm)

\$3,000 - 5,000



337

338

JB BLUNK (1926-2002)

Plaque

1955-70

chip carved wood, signed in ink on the underside 'JB BLUNK'

height 1/2in (1.2cm); width 13 3/8in (33.9cm); depth 8in (20.3cm)

\$1,000 - 1,500



338



339

339

JAMES LOVERA (1920-2015)

Two Bowls

circa 1975

glazed earthenware, each incised 'lovera'

height of largest 5 1/4in (13.5cm); diameter 11 1/2in (29.3cm)

\$2,000 - 3,000

Provenance

Estates of Susan and Eliot Black



340

340

OTTO NATZLER (1908-2007)

Hand Built Vessel

1980

glazed earthenware, signed in black 'OTTO NATZLER 1980', with maker's stamp

height 6 1/2in (16.5cm); width 8in (20.3cm); depth 4in (10.1cm)

\$1,000 - 1,500

Provenance

Private Collection, Southern California

341 W

OTTO NATZLER (1908-2007)

Footed Ikebana Vase on Custom Stand

glazed earthenware, travertine

overall height 45 1/2in (115.5cm); width 12in (30.4cm); depth 12in (30.4cm)

\$1,500 - 2,000

Provenance

Private Collection, Southern California



341



342

342

JAMES LOVERA (1920-2015)

Two Bowls

circa 1975

volcanic glazed earthenware, each incised 'lovera'

height of largest 3 1/2in (9cm); diameter 8 1/2in (21cm)

\$1,500 - 2,000

Provenance

Estates of Susan and Eliot Black

343

GERTRUD (1908-1971) AND OTTO NATZLER (1908-2007)

Footed Vase

1962

glazed earthenware, the underside signed in ink 'NATZLER' and with sticker reading 'M346', additional inscription of museum accession number

height 4in (10.1cm); diameter 4 3/4in (12cm)

\$800 - 1,200

Provenance

Sold to benefit the Acquisition Fund of the Fine Arts Museums of San Francisco



343



344

344

GERTRUD (1908-1971) AND OTTO NATZLER (1908-2007)

Monumental Bowl with Base

circa 1950

wheel-thrown earthenware with Verdigris Lava glaze,

the base signed 'NATZLER'

height 5 3/4in (14.7cm); diameter 11 1/4in (28.5cm)

\$5,000 - 7,000

Provenance

Private Collection, Los Angeles

We would like to thank Gail Reynolds Natzler for her gracious assistance in cataloguing this work.





345

345

ROSE CABAT (1914-2015)

Group of Three Feelies

glazed porcelain, each incised 'CABAT' on the underside, two further numbered

height of largest 3in (7.6cm); diameter 2 1/4in (5.7cm)

\$1,500 - 2,000

Provenance

Estates of Susan & Eliot Black

346

HARRISON MCINTOSH (1914-2016)

Vase

glazed terracotta, incised 'McIntosh', *together with* two miniature vases, bowl and cup, three inscribed 'McIntosh', one inscribed 'Harrison McIntosh'

height of tallest 8in (20cm)

\$800 - 1,200



346





347

347 W

MAURICE ELIE SARTHOU (1911-2000)

Le Grand Pins

circa 1965

oil on canvas, signed 'M.E. Sarthou' lower right, signed 'Sarhou' and inscribed '14 rue Larrey' verso

57 1/2 x 38 3/4in (146 x 98.5cm)

\$2,000 - 3,000

Provenance

Collection of Charles and Muriel Kittel

348

ROSE CABAT (1914-2015)

Bowl

1982

glazed earthenware, signed in glaze on the underside 'CABAT' with sticker marked '82', together with a Harvey Littleton bowl, glazed earthenware, with incised artist's initials

height 1 1/2in and 2 3/4in (3.8cm and 6.9cm); width 6 1/4in and 9 1/4in (15.8cm and 23.4cm)

\$1,000 - 1,500



348

349

RUPERT J. DEESE (1924-2010)

Vase

circa 1950

glazed stoneware, underside stamped with artist's initials and with faded sticker 'RUPERT DEESE STONEWARE DESIGN CLAREMONT CALIFORNIA'

height 5in (12.7cm); diameter 5 3/4in (14.6cm)

\$1,000 - 1,500

Provenance

Private Collection, California

350

HARRISON MCINTOSH (1914-2016)

Decanter with Seven Cups

circa 1970

glazed stoneware, the decanter incised 'McIntosh', the cups stamped 'HM'

height of decanter 11 1/4in (28.5cm); diameter 3 1/4in (8.2cm); height of cups 2in (5cm); diameter 2 1/2in (6.3cm)

\$1,000 - 1,500

Provenance

Private Collection, California



349



350



351

RUTH DUCKWORTH (1919-2009)

Group of Four Objects

circa 1975

glazed stoneware and porcelain, three objects incised or signed in the glaze

height of largest 2 1/4in (5.7cm); width 20 1/2in (52cm); depth 12in (30.4cm)

\$2,500 - 3,500



352



353

352

RICHARD DEVORE (1933-2006)

Vase

1966-70

glazed earthenware, apparently unmarked

height 7in (17.7cm); width 6 1/2in (16.5cm); depth 7in (17.7cm)

\$4,000 - 6,000

Provenance

Habatat Galleries, Dearborn, Michigan

Private Collection, California, acquired directly from the above,

1970

353

RUTH DUCKWORTH (1919-2009)

Untitled

1980

porcelain, glaze mark 'R80'

height 5in (12.5cm); width 17in (43cm); depth 16 1/2in (42cm)

\$2,000 - 3,000

Provenance

Private Collection, New England

354 W

RUTH DUCKWORTH (1919-2009)

Vessel on Stand

1977

stoneware, signed 'R 77' on the underside of the base

height of vessel 14in (35.5cm); width 18 1/2in (46.9cm); depth 19in (48.2cm)

\$3,000 - 5,000



354



355

355 W

LEONARDO NIERMAN (BORN 1932)

Ciudad Prismatic

circa 1970

acrylic on masonite, signed lower right 'Nierman' and titled verso

36 x 48in (91.5 x 122cm)

\$2,000 - 4,000

356

LOS CASTILLO

Suite of Jewelry

circa 1950

comprising a necklace, pair of earrings and bracelet, sterling silver, stamped 'LOS CASTILLO TAXCO MEXICO MM925 STERLING'

length of necklace 18 1/2in (47cm)

\$1,500 - 2,500



356



357

357

BYRON GÁLVEZ (1941-2009)

Untitled (Figure)

1984

oil on canvas, signed and dated lower right 'Byron 84'
19 5/8 x 23 5/8in (49.9 x 60cm)

\$3,000 - 5,000

358

PETER CALLAS (BORN 1952)

Untitled

2014

wood-fired stoneware

height 10in (25.4cm); diameter 9 1/2in (24.1cm)

\$800 - 1,200

Provenance

Estate of Paul J. Coady

359

ROBERT TURNER (1913-2005)

Ashanti

circa 1991-92

glazed stoneware, sandblasted, incised 'Turner'

height 15 1/2in (39cm); diameter 11in (28cm)

\$1,500 - 2,000

Provenance

Helen Drutt Gallery, Philadelphia, Pennsylvania

Acquired from the above, June 5, 2005



358



359



360

360

ROBERT TURNER (1913-2005)

Dome

circa 1978

glazed ceramic, signed 'turner' on the underside with label
'ROBERT TURNER ALFRED STATION NY 14803'
height 10 1/2in (26.6cm); diameter 9 1/2in (24.1cm)

\$1,500 - 2,500



361

361
CLIFF LEE (BORN 1951)
 Group of Three Vases
 1988
 porcelain, each incised with maker's signature, two dated '88'
height of tallest 8in (20cm); diameter of top 6 1/4in (16cm)

\$1,500 - 2,000



362

362
PAUL PHILP (BORN 1941)
 Group of Two Vases
 circa 2000
 stoneware, each stamped 'PHILP.'
height 7in and 9 1/2in (17.7cm and 24.1cm); width 9 1/4in (23.4cm); depth 4 1/4in and 9 1/2in (10.7cm and 24.1cm)

\$1,500 - 2,000

Provenance
 Collection of Bill and Elizabeth Clark



363

363
EWEN HENDERSON (1934-2000)
 Bowl
 circa 1980
 glazed stoneware, apparently unsigned
height 8 1/2in (21.5cm); diameter 9 3/4in (24.7cm)

\$1,500 - 2,500

Provenance
 Private International Collection

The present lot is more unique for this maker as bowls of this size are rarely seen.

364 W

CLAYTON JAMES (1918-2016)

Pot

1980

ceramic, incised 'JAMES 80 MEC AO1' on the underside of the base

height 17in (43.1cm); diameter 22in (55.8cm)

\$1,500 - 2,000



364



365

365

HAMADA SHOJI (1894-1978)

Square-Form Bowl

glazed ceramic, apparently unmarked

height 5in (12.7cm); width 8in (20.3cm); depth 8in (20.3cm)

\$1,000 - 2,000

366

JANET LEACH (1918-1997)

Large Vase

circa 1985

glazed stoneware, apparently unsigned

height 17in (43.1cm); diameter 11 1/2in (29.2cm)

\$1,500 - 2,000

Provenance

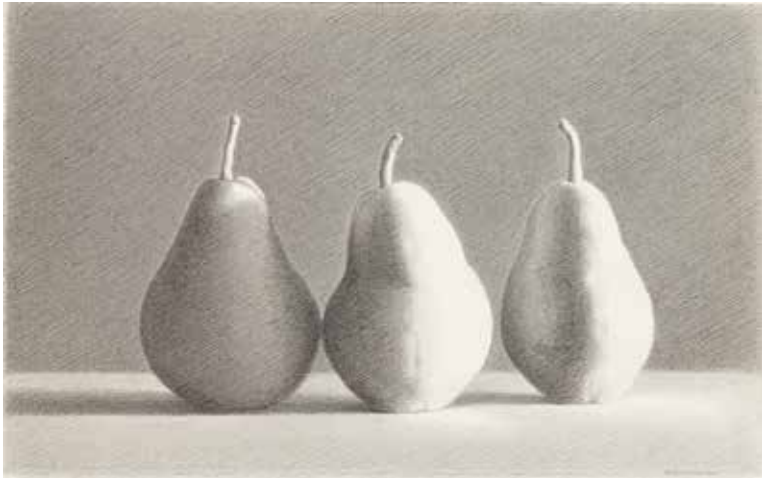
Private International Collection

Exhibited

Craft Potters Association, London, England, 1989



366



367

367
MARTHA ALF (BORN 1930)
 Three Pears
 1995
 4B Turquoise pencil on Arches paper, signed 'Martha Alf' and dated '1995' lower right, with artist's studio label verso
 10 x 16 1/8in (20.5 x 41cm)

\$1,200 - 1,800

Provenance
 Newspace Gallery, Los Angeles



368



368
JOHN CHAMBERLAIN (1927-2011)
 Tasted Snow
 1988
 ceramic with metal inlay, black painted 'TASTED SNOW CHAMBERLAIN 88' on underside
 height 2 1/2in (6.4cm); diameter 5 1/2in (14cm)

\$1,000 - 2,000

Provenance
 Collection of Hal McKusick

The offered lot is accompanied by a letter of conveyance signed by John Chamberlain

369
DAVID REGAN (BORN 1964)
 Untitled (Teapot)
 1999
 porcelain, incised 'Regan 1999'
 height 9 1/4in (23.5cm); width 13 1/4in (33.7cm); depth 7in (17.8cm)

\$1,000 - 1,500

Provenance
 Private Collection, New York



369



370

370

COLIN PEARSON (1923-2007)

Winged Vase

circa 1995

glazed stoneware, impressed potter's seal

height 9 3/4in (24.7cm); width 16 5/8in (42.3cm); depth 9in (22.8cm)

\$1,800 - 2,500

Provenance

Private International Collection

371

KENNETH FERGUSON (1928-2004)

Fox and Hare Vessel with Cover

circa 1997

glazed stoneware, signed on underside 'Ferguson'

height 30 3/4in (78.2cm); diameter 10 1/4in (26cm)

\$1,800 - 2,500

Provenance

Private International Collection

The fox in the present lot is symbolic of the maker.



371



372

372 W

BETTY FEVES (1918-1985)

Figural Sculpture

1970s

glazed earthenware, driftwood, incised 'FEVES' at the base of one leg
height 69in (175.2cm); width 50in (127cm)

\$2,500 - 3,500

Provenance

Private Collection, Washington



373

373 W

PHILLIP MABERRY (BORN 1951)

Vessel on Pedestal

1987/1988

decorated and glazed earthenware, vessel inscribed and dated
'Maberry 87' and pedestal inscribed 'Maberry'
height of vessel 20 3/4in (52cm); width 28in (71cm); height of pedestal
31in (78cm); diameter 16in (40cm)

\$3,500 - 4,500

Provenance

Garth Clark Gallery, New York

374

WAISTEL COOPER (1921-2003)

Female Figural Vase

1960s

partially glazed stoneware, signed on underside 'Waistel'
height 21 1/2in (54.6cm); width 12in (30.5cm); depth 10 3/4in (27.3cm)

\$1,200 - 1,800

Provenance

Private International Collection

The present lot and the subsequent lot are the largest known examples by the maker and have never before been sold at the same time.



374

375

WAISTEL COOPER (1921-2003)

Male Figural Vase

1960s

glazed stoneware, signed on underside 'Waistel'
height 21in (53.3cm); width 15in (38.2cm); depth 12in (30.5cm)

\$1,200 - 1,800

Provenance

Private International Collection

The present lot and the previous lot are the largest known examples by the maker and have never before been sold at the same time.



375



376

376 W

AKIO TAKAMORI (1950-2017)

Untitled (Standing Figure)

2002

earthenware with painted features, painted 'AKIO 2002'
height 36in (91cm); width 12in (30cm); depth 9in (23cm)

\$3,500 - 4,500



377

377 W

RUDY AUTIO (1926-2007)

Vase

1960s

glazed earthenware, signed 'AUTIO' in glaze on the
underside

height 19 3/4in (50.1cm); width 10 1/2in (26.6cm); depth
7 1/2in (19cm)

\$3,000 - 5,000



378

378 W

RUDY AUTIO (1926-2007)

Vessel

circa 1965

glazed earthenware, signed 'AUTIO' on the underside in glaze

height 19 1/4in (48.8cm); width 19 1/2in (49.5cm);

depth 8in (20.3cm)

\$3,000 - 5,000



379

379 W

RUDY AUTIO (1926-2007)

Early Vessel With Nude

circa 1960

glazed earthenware

height 35 1/2in (90.2cm); width 17 1/4in (43.8cm);

depth 10in (25.4cm)

\$15,000 - 25,000

Provenance

Jeffrey Spahn Gallery, San Francisco

Private International Collection

END OF SALE

Bonhams

AUCTIONEERS SINCE 1793



Prints & Multiples

Los Angeles | 31 March 2020

PREVIEW

26 - 30 March 2020

INQUIRIES

+1 (323) 436 5435

+1 (415) 503 3259

morisa.rosenberg@bonhams.com

[bonhams.com/prints](https://www.bonhams.com/prints)

BRIDGET RILEY (BORN 1931)

Large Fragment (S. 64), 2006

Screenprint in colors

41 7/8 x 35 7/8in (106.6 x 91.3cm)

\$8,000 - 10,000

Bonhams

AUCTIONEERS SINCE 1793



Consignments Invited Modern Decorative Art + Design

New York | 5 June 2020

INQUIRIES

+1 (212) 710 1306
design.us@bonhams.com
sell.bonhams.com

ANDRÉ DUBREUIL (BORN 1951)

Custom Sideboard circa 1995
iron, enameled copper, marble
height 37 1/2 (95cm); width 69 1/2in (177cm);
depth 24in (61cm)

Sold for \$187,575

Bonhams

AUCTIONEERS SINCE 1793



The Elegant Home

Los Angeles | 20 April 2020

INQUIRIES

+1 (323) 436 5463

anna.hicks@bonhams.com

bonhams.com/eleganthome

AN EXCEPTIONAL AMERICAN SILVER AND COPPER "INDIAN" VASE, ATTRIBUTED TO JOSEPH HEINRICH FOR THOMAS G. BROWN & SONS, NEW YORK, RETAILED BY GROGAN & CO., PITTSBURGH, CIRCA 1900-1915
\$100,000 - 150,000

Bonhams

AUCTIONEERS SINCE 1793



Made in California: Contemporary Art

Los Angeles | 8 April 2020

PREVIEW

3 - 7 April 2020

INQUIRIES

+1 (323) 436 5507

+1 (415) 694 9002

sonja.moro@bonhams.com

bonhams.com/madeincalifornia

BILLY AL BENGSTON

Strand Dracula, 1972

acrylic on canvas

48 x 48 in. (121.9 x 121.9 cm.)

\$40,000 - 60,000

Offsite sold Property Storage Information

Please note that all lots listed at the beginning of our printed catalog, if not removed immediately after the sale, will be transferred to a nearby storage facility. For the convenience of the successful bidder of one or more of these lots, all purchased lots will be transferred to our offsite storage together. Please read the Conditions of Sale regarding the removal of sold lots.

Bonhams' storage and logistics partner is Box, Pack, & Ship, LLC, a well-known organization that specializes in crating, packaging and shipping.

Our storage and logistics partnership provides several beneficial services. The first being 7 days of free storage.

- During this auction, clients will be expected to pick up all property from Bonhams by 12pm on March 31.
- All items listed at the beginning of our printed catalog, along with all other items purchased, if not removed immediately after the sale, will be transferred to Box, Pack, & Ship, LLC warehouse. With an appointment made 24 hours in advance, clients can pick up their property at 3800 S. Main Street Los Angeles, CA 90037.
- Box, Pack, & Ship, LLC will charge an uplift fee to transport your items to their warehouse. Small items that can be handled easily by one person will be charged \$50. Larger items that can still be handled by one person will be charged \$85. Large items that require two people to handle will be charged \$100. Charges will be payable directly to Box, Pack, & Ship, LLC. Should you choose to have Box, Pack, & Ship, LLC ship or deliver your property, this uplift fee will be waived.
- Clients will have 7 days of free storage to retrieve their property or make arrangements with Box, Pack, & Ship, LLC to pack and ship their property. Storage fees will begin to accrue on the 6th day of storage.
- Retrieval from the offsite warehouse is by appointment only. Clients must call 24 hours in advance. Clients can utilize the delivery services offered by Box, Pack, & Ship, LLC or clients may make their own arrangements. Please call +1 (800) 674 4705.
- Box, Pack, & Ship, LLC is available to ship internationally. They offer importing and exporting services. Clients can select either airfreight or ocean cargo delivery options, which range from door-to-port, door-to-airport with door-to-door service also available. Clients can ship one item, co-load or container load at a discounted rate through Box, Pack, & Ship, LLC. Please call +1 (800) 674 4705 for more information.
- All purchases not designated for offsite storage will remain onsite at Bonhams for a period of 21 days beginning the date of the auction. During this 21 day period, clients may remove such property themselves, make arrangements with the Bonhams packaging and shipping department or provide their own shipper for removal of all property. If a client does not retrieve his/her property or finalize shipping arrangements within 21 days, the purchases will be removed to the offsite storage facility of Box, Pack, & Ship, LLC. Again, uplift charges for packing and transport from our gallery to Box, Pack, & Ship, LLC will be charged by Box, Pack, & Ship, LLC.
- Payment of the hammer price, premium and any applicable sales taxes must be made directly to Bonhams prior to the release of property. Any removal, storage or other fees due to Box, Pack, & Ship, LLC should be made directly to Box, Pack, & Ship, LLC.
- Change of shipping address must be authorized by Bonhams Revenue Manager, Martin Romero, before Box, Pack, & Ship, LLC will be permitted to re-route your purchases.

LOTS TO BE REMOVED TO STORAGE:

4	123	205	255	310
12	124	206	256	311
13	125	207	257	312
14	128	208	258	313
21	129	209	259	314
23	137	211	261	315
24	138	212	262	320
25	139	213	263	323
30	147	214	264	327
31	149	216	265	341
32	151	217	266	347
35	152	218	267	354
36	153	222	268	355
38	161	224	269	364
57	162	225	270	372
58	163	228	272	373
81	164	229	273	376
82	165	230	274	377
83	166	231	275	378
84	169	232	276	379
85	172	234	277	
86	173	235	278	
87	174	236	279	
88	175	237	282	
89	177	238	283	
90	178	239	284	
91	179	240	285	
92	182	241	286	
94	184	242	287	
95	186	243	291	
96	190	244	293	
97	193	245	295	
98	194	246	299	
100	196	247	300	
101	197	248	301	
104	198	249	304	
105	199	250	305	
107	200	251	306	
110	201	252	307	
114	202	253	308	
117	203	254	309	
	204			

Conditions of sale

The following Conditions of Sale, as amended by any published or posted notices or verbal announcements during the sale, constitute the entire terms and conditions on which property listed in the catalog shall be offered for sale or sold by Bonhams & Butterfields Auctioneers Corp. and any consignor of such property for whom Bonhams acts as agent. By participating in this sale, you agree to be bound by these terms and conditions.

If live online bidding is available for the subject auction, additional terms and conditions of sale relating to online bidding will apply; see www.bonhams.com/WebTerms for the supplemental terms. As used herein, "Bonhams," "we" and "us" refer to Bonhams & Butterfields Auctioneers Corp.

1. As used herein, the term "bid price" means the price at which a lot is successfully knocked down to the buyer. The term "purchase price" means the aggregate of (a) the bid price, (b) a PREMIUM retained by us and payable by the buyer (the "buyer's premium"), EQUAL TO 27.5% OF THE FIRST \$3,000 OF THE BID PRICE, 25% OF THE AMOUNT OF THE BID PRICE ABOVE \$3,000 UP TO AND INCLUDING \$400,000, 20% OF THE AMOUNT OF THE BID PRICE ABOVE \$400,000 UP TO AND INCLUDING \$4,000,000, AND 13.9% OF THE AMOUNT OF THE BID PRICE OVER \$4,000,000, and (c) unless the buyer is exempt by law from the payment thereof, any Alabama, Arizona, California, Colorado, Connecticut, Florida, Georgia, Hawaii, Idaho, Illinois, Iowa, Indiana, Kentucky, Louisiana, Maine, Massachusetts, Michigan, Minnesota, Nevada, New Jersey, New York, North Carolina, Ohio, Pennsylvania, Rhode Island, Texas, Utah, Virginia, Washington, D.C., Washington, Wisconsin, Wyoming or other state or local sales tax (or compensating use tax) and other applicable taxes. With regard to New York sales tax, please refer to the "Sales and Use Tax" section of these Conditions of Sale.

2. In order to bid at the sale, prospective bidders must submit to Bonhams a completed bidder registration form (appearing at the end of this catalog) and any other requested information or references. New bidders and bidders who have not recently updated their registration information must pre-register to bid at least two business days before the sale. Individuals will be required to provide government-issued proof of identity and proof of address. Entity clients will be required to provide documentation including confirmation of entity registration showing the registered name, confirmation of registered address, documentary proof of officers and beneficial owners, proof of authority to transact on behalf of the entity and government-issued proof of identity for the individual who is transacting on the entity's behalf.

We may also request a financial reference and /or deposit from bidders before approving the bidder registration. In the event a deposit is submitted and you are not the successful bidder, your deposit will be returned to you. If you are the successful bidder, any such deposit will be credited to offset the appropriate portion of the purchase price.

We reserve the right to request further information, including regarding the source of funds, in order to complete bidder identification and registration procedures (including completing any anti-money laundering and/or anti-terrorism financing checks we may require) to our satisfaction. If our bidder identification and registration procedures are not satisfied, we may, in our sole discretion, decline to register any bidder or reject any bid or cancel any sale to such bidder.

Every bidder shall be deemed to act as a principal unless prior to the commencement of the sale there is a written acceptance by Bonhams of a bidder registration form completed and signed by the principal which clearly states that the authorized bidding agent is acting on behalf of the named principal. Absent such written acceptance by Bonhams, any person placing a bid as agent on behalf of another (whether or not such person has disclosed that fact or the identity of the principal) may be jointly and severally liable with the principal under any contract resulting from the acceptance of a bid. Every bidder shall be responsible for

any use of its assigned paddle or bidding account, regardless of the circumstances.

3. You represent and warrant that: (i) you have provided us with true and correct copies of valid identification and proof of residence and, if applicable, financial and/or corporate documents; (ii) neither you, your principal (if applicable, and subject to Bonhams' prior written acceptance pursuant to paragraph 2 above), nor any individual or entity with a beneficial or ownership interest in either or in the purchase transaction is on the Specially Designated Nationals List maintained by the Office of Foreign Assets Control of the U.S. Department of the Treasury nor subject to any other sanctions or embargo program or regulation in effect in the United States, European Union, England and Wales, or other applicable jurisdictions; (iii) if you are acting as an agent for a principal, you have conducted appropriate due diligence into such principal, and agree that Bonhams shall be entitled to rely upon such due diligence, you will retain adequate records evidencing such due diligence for a period of five (5) years following the consummation of the sale, and will make these records available for inspection upon Bonhams' request; (iv) neither the purchase transaction (including your bidding activity) nor the purchase funds are connected with nor derive from any criminal activity, and they are not designed to nor have they or shall they, violate the banking, anti-money laundering, or currency transfer laws or other regulations (including without limitation, import-export laws) of any country or jurisdiction, or further any other unlawful purpose, including without limitation collusion, anti-competitive activity, tax evasion or tax fraud.

You acknowledge and agree that we may rely upon the accuracy and completeness of the foregoing warranties.

4. On the fall of the auctioneer's hammer, the highest bidder shall have purchased the offered lot in accordance and subject to compliance with all of the conditions set forth herein and (a) assumes full risk and responsibility therefor, (b) if requested will sign a confirmation of purchase, and (c) will pay the purchase price in full or such part as we may require for all lots purchased. No lot may be transferred.

Unless otherwise agreed, payment in good, cleared funds is due and payable within five (5) business days following the auction sale. Whenever the buyer pays only a part of the total purchase price for one or more lots purchased, we may apply such payments, in our sole discretion, to the lot or lots we choose. Payment will not be deemed made in full until we have received good, cleared funds for all amounts due. Title in any purchased property will not pass until full and final payment has been received by Bonhams. Accounts must be settled in full before property is released to the buyer. In the event property is released earlier, such release will not affect the passing of title or the buyer's obligation to timely remit full payment.

We reserve the right to refuse to accept payment from a source other than the registered bidder or buyer of record. Once an invoice is issued, we cannot change the buyer's name on an invoice.

Payment for purchases must be made in the currency in which the sale is conducted and may be made in or by (a) cash, up to the amount of US \$5,000 (whether by single or multiple related payments), or the equivalent in the currency in which the sale is conducted, (b) cashier's check or money order, (c) personal check with approved credit drawn on a U.S. bank, (d) wire transfer or other immediate bank transfer, or (e) Visa, MasterCard, American Express or Discover credit, charge or debit card, provided that the registered bidder or buyer's name is printed on the card. A processing fee will be assessed on any returned checks.

To the fullest extent permitted by applicable law, the buyer grants us a security interest in the property, and we may retain as collateral security for the buyer's obligations to us, any property and all monies held or received by us for the account of the buyer, in our possession. We also retain all rights of a secured party under the California Commercial

Code, and you agree that we may file financing statements without your signature. If the foregoing conditions or any other applicable conditions herein are not complied with, in addition to all other remedies available to us and the consignor by law, we may at our election: (a) hold the buyer liable for the full purchase price and any late charges, collection costs, attorneys' fees and costs, expenses and incidental damages incurred by us or the consignor arising out of the buyer's breach; (b) cancel the sale, retaining as liquidated damages all payments made by the buyer; and/or (c) cancel the sale and/or resell the purchased property, at public auction and/or by private sale, and in such event the buyer shall be liable for the payment of all consequential damages, including any deficiencies or monetary losses, and all costs and expenses of such sale or sales, our commissions at our standard rates, all other charges due hereunder, all late charges, collection costs, attorneys' fees and costs, expenses and incidental damages. In addition, where two or more amounts are owed in respect of different transactions by the buyer to us, to Bonhams 1793 Limited and/or to any of our other affiliates, subsidiaries or parent companies worldwide within the Bonhams Group, we reserve the right to apply any monies paid in respect of a transaction to discharge any amount owed by the buyer. If all fees, commissions, premiums, bid prices and other sums due to us from the buyer are not paid promptly as provided in these Conditions of Sale, we reserve the right to impose a finance charge equal to 1.5% per month (or, if lower, the maximum nonusurious rate of interest permitted by applicable law), on all amounts due to us beginning on the 31st day following the sale until payment is received, in addition to other remedies available to us by law.

5. We reserve the right to withdraw any property and to divide and combine lots at any time before such property's auction. Unless otherwise announced by the auctioneer at the time of sale, all bids are per lot as numbered in the catalog and no lots shall be divided or combined for sale.

6. We reserve the right to reject a bid from any bidder, to split any bidding increment, and to advance the bidding in any manner the auctioneer may decide. In the event of any dispute between bidders, or in the event the auctioneer doubts the validity of any bid, the auctioneer shall have sole and final discretion either to determine the successful bidder, re-open the bidding, or to cancel the sale and re-offer and resell the article in dispute. If any dispute arises after the sale, our sales records shall be conclusive in all respects.

We further reserve the right to cancel the sale of any property if (i) you are in breach of your representations and warranties as set forth in paragraph 3 above; (ii) we, in our sole discretion, determine that such transaction might be unlawful or might subject Bonhams or the consignor to any liability to any third party; or (iii) there are any other grounds for cancellation under these Conditions of Sale.

7. If we are prevented by fire, theft or any other reason whatsoever from delivering any property to the buyer or a sale otherwise cannot be completed, our liability shall be limited to the sum actually paid therefor by the buyer and shall in no event include any compensatory, incidental or consequential damages.

8. All lots in the catalog are offered subject to a reserve unless otherwise indicated in the catalog. The reserve is the confidential minimum bid price at which such lot will be sold and it does not to exceed the low estimate value for the lot. If a lot is offered subject to a reserve, we may implement such reserve by bidding on behalf of the consignor, whether by opening bidding or continuing bidding in response to other bidders until reaching the reserve. If we have an interest in an offered lot and the proceeds therefrom other than our commissions, we may bid up to the reserve to protect such interest. If the auctioneer determines that any opening or subsequent bid is below the reserve for a lot, (s)he may reject such opening bid and withdraw the item from sale. CONSIGNORS ARE NOT ALLOWED TO BID ON THEIR OWN ITEMS.

Conditions of sale - continued

9. Other than as provided in the Limited Right of Rescission with respect to identification of authorship, all property is sold "AS IS" and any statements contained in the catalog or in any advertisement, bill of sale, announcement, condition report, invoice or elsewhere as to period, culture, source, origin, media, measurements, size, quality, rarity, provenance, importance, exhibition and literature of historical relevance, merchantability, fitness for a particular purpose, or physical condition ARE QUALIFIED STATEMENTS OF OPINION AND NOT REPRESENTATIONS, WARRANTIES, OR ASSUMPTION OF LIABILITY. Neither Bonhams nor the consignor shall be responsible for any error or omission in the catalog description of any property. No employee or agent of Bonhams is authorized to make on our behalf or on that of the consignor any representation or warranty, oral or written, with respect to any property.

10. All purchased property shall be removed from the premises at which the sale is conducted by the date(s) and time(s) set forth in the "Buyer's Guide" portion of this catalog. If not so removed, daily storage fees will be payable to us by the buyer as set forth therein. We reserve the right to transfer property not so removed to an offsite warehouse at the buyer's risk and expense, as set forth in more detail in the "Buyer's Guide." Packing and handling of purchased lots are the responsibility of the buyer and at the buyer's entire risk, as are the identification, application for, and cost(s) of obtaining of any necessary export, import, restricted material (e.g. endangered species) or other permit for such lots.

For an additional fee, Bonhams may provide packing and shipping services for certain items as noted in the "Buyer's Guide" section of the catalog.

11. The copyright in the text of the catalog and the photographs, digital images and illustrations of lots in the catalog belong to Bonhams or our licensors. You will not reproduce or permit anyone else to reproduce such text, photographs, digital images or illustrations without our prior written consent. Bonhams and the consignor make no representation or warranty as to whether the buyer acquires any copyrights on the purchase of an item of Property.

12. Bonhams may, in our discretion, as a courtesy and free of charge, execute bids on your behalf if so instructed by you, provided that neither Bonhams nor our employees or agents will be liable for any error or default (whether human or otherwise) in doing so or for failing to do so. Without limiting the foregoing, Bonhams (including our agents and employees) shall not be responsible for any problem relating to telephone, online, or other bids submitted remotely through any means, including without limitation, any telecommunications or internet fault or failure, or breakdown or problems with any devices or online platforms, including third-party online platforms, regardless of whether such issue arises with our, your, or such third-party's technology, equipment, or connection. By participating at auction by telephone or online, bidders expressly consent to the recording of their bidding sessions and related communications with Bonhams and our employees and agents, and acknowledge their acceptance of these Conditions of Sale as well as any additional terms and conditions applicable to any such bidding platform or technology.

13. These Conditions of Sale shall bind the successors and assigns of all bidders and buyers and inure to the benefit of our successors and assigns. No waiver, amendment or modification of the terms hereof (other than posted notices or oral announcements during the sale) shall bind us unless specifically stated in writing and signed by us. No act or omission of Bonhams, its employees or agents, nor any failure thereof to exercise any remedy hereunder, shall operate or be deemed to operate as a waiver of Bonhams' rights under these Conditions of Sale. If any part of these Conditions of Sale is for any reason invalid or unenforceable, the rest shall remain valid and enforceable.

14. These Conditions of Sale and the buyer's and our respective rights and obligations hereunder shall be governed

by and construed and enforced in accordance with the laws of the State of California. Any dispute, controversy or claim arising out of or relating to this agreement, or the breach, termination or validity thereof, brought by or against Bonhams (but not including claims brought against the consignor by the buyer of lots consigned hereunder) shall be resolved by the procedures set forth below.

15. You accept and agree that Bonhams will hold and process your personal information and may share and use it as required by law and as described in, and in line with Bonhams' Privacy Policy, available at website at www.bonhams.com/legals/. If you desire access, update, or restriction to the use of your personal information, please email data.protection@bonhams.com.

SALES AND USE TAX

New York sales tax is charged on the hammer price, buyer's premium and any other applicable charges on any property collected or delivered in New York State, regardless of the state or country in which the buyer resides or does business. Buyers who make direct arrangements for collection by a shipper who is considered a "private" or "contract" carrier by the New York Department of Taxation and Finance will be charged New York sales tax, regardless of the destination of the property. Property collected for delivery to a destination outside of New York by a shipper who is considered a "common carrier" by the New York Department of Taxation and Finance (e.g. United States Postal Service, United Parcel Service, and FedEx) is not subject to New York sales tax, but if it is delivered into any state in which Bonhams is registered or otherwise conducts business sufficient to establish a nexus, Bonhams may be required by law to collect and remit the appropriate sales tax in effect in such state. Property collected for delivery outside of the United States by a freight forwarder who is registered with the Transportation Security Administration ("TSA") is not subject to New York sales tax.

MEDIATION AND ARBITRATION PROCEDURES

(a) Within 30 days of written notice that there is a dispute, the parties or their authorized and empowered representatives shall meet by telephone and/or in person to mediate their differences. If the parties agree, a mutually acceptable mediator shall be selected and the parties will equally share such mediator's fees. The mediator shall be a retired judge or an attorney familiar with commercial law and trained in or qualified by experience in handling mediations. Any communications made during the mediation process shall not be admissible in any subsequent arbitration, mediation or judicial proceeding. All proceedings and any resolutions thereof shall be confidential, and the terms governing arbitration set forth in paragraph (c) below shall govern.

(b) If mediation does not resolve all disputes between the parties, or in any event no longer than 60 days after receipt of the written notice of dispute referred to above, the parties shall submit the dispute for binding arbitration before a single neutral arbitrator. Such arbitrator shall be a retired judge or an attorney familiar with commercial law and trained in or qualified by experience in handling arbitrations. Such arbitrator shall make all appropriate disclosures required by law. The arbitrator shall be drawn from a panel of a national arbitration service agreed to by the parties, and shall be selected as follows: (i) If the national arbitration service has specific rules or procedures, those rules or procedures shall be followed; (ii) If the national arbitration service does not have rules or procedures for the selection of an arbitrator, the arbitrator shall be an individual jointly agreed to by the parties. If the parties cannot agree on a national arbitration service, the arbitration shall be conducted by the American Arbitration Association, and the arbitrator shall be selected in accordance with the Rules of the American Arbitration Association. The arbitrator's award shall be in writing and shall set forth findings of fact and legal conclusions.

(c) Unless otherwise agreed to by the parties or provided by the published rules of the national arbitration service:

(i) the arbitration shall occur within 60 days following the selection of the arbitrator;

(ii) the arbitration shall be conducted in the designated location, as follows: (A) in any case in which the subject auction by Bonhams took place or was scheduled to take place in the State of New York or Connecticut or the Commonwealth of Massachusetts, the arbitration shall take place in New York City, New York; (B) in all other cases, the arbitration shall take place in the city of San Francisco, California; and

(iii) discovery and the procedure for the arbitration shall be as follows:

(A) All arbitration proceedings shall be confidential;

(B) The parties shall submit written briefs to the arbitrator no later than 15 days before the arbitration commences;

(C) Discovery, if any, shall be limited as follows: (i) Requests for no more than 10 categories of documents, to be provided to the requesting party within 14 days of written request thereof; (ii) No more than two (2) depositions per party, provided however, the deposition(s) are to be completed within one (1) day; (iii) Compliance with the above shall be enforced by the arbitrator in accordance with California law;

(D) Each party shall have no longer than eight (8) hours to present its position. The entire hearing before the arbitrator shall not take longer than three (3) consecutive days;

(E) The award shall be made in writing no more than 30 days following the end of the proceeding. Judgment upon the award rendered by the arbitrator may be entered by any court having jurisdiction thereof.

To the fullest extent permitted by law, and except as required by applicable arbitration rules, each party shall bear its own attorneys' fees and costs in connection with the proceedings and shall share equally the fees and expenses of the arbitrator.

LIMITED RIGHT OF RESCISSION

If within one (1) year from the date of sale, the original buyer (a) gives written notice to us alleging that the identification of Authorship (as defined below) of such lot as set forth in the **BOLD TYPE** heading of the catalog description of such lot (as amended by any saleroom notices or verbal announcements during the sale) is not substantially correct based on a fair reading of the catalog (including the terms of any glossary contained therein), and (b) within 10 days after such notice returns the lot to us in the same condition as at the time of sale, and (c) establishes the allegation in the notice to our satisfaction (including by providing one or more written opinions by recognized experts in the field, as we may reasonably require), then the sale of such lot will be rescinded and, unless we have already paid to the consignor monies owed him in connection with the sale, the original purchase price will be refunded.

If, prior to receiving such notice from the original buyer alleging such defect, we have paid the consignor monies owed him in connection with the sale, we shall pay the original buyer the amount of our commissions, any other sale proceeds to which we are entitled and applicable taxes received from the buyer on the sale and make demand on the consignor to pay the balance of the original purchase price to the original buyer. Should the consignor fail to pay such amount promptly, we may disclose the identity of the consignor and assign to the original buyer our rights against the consignor with respect to the lot the sale of which is sought to be rescinded. Upon such disclosure and assignment, any liability of Bonhams as consignor's agent with respect to said lot shall automatically terminate.

The foregoing limited right of rescission is available to the original buyer only and may not be assigned to or relied upon

Conditions of sale - continued

by any subsequent transferee of the property sold. The buyer hereby accepts the benefit of the consignor's warranty of title and other representations and warranties made by the consignor for the buyer's benefit. Nothing in this section shall be construed as an admission by us of any representation of fact, express or implied, obligation or responsibility with respect to any lot. THE BUYER'S SOLE AND EXCLUSIVE REMEDY AGAINST BONHAMS FOR ANY REASON WHATSOEVER IS THE LIMITED RIGHT OF RESCISSION DESCRIBED IN THIS SECTION.

"Authorship" means only the identity of the creator, the period, culture and source or origin of the lot, as the case may be, as set forth in the **BOLD TYPE** heading of the print catalog entry. The right of rescission does not extend to: (a) works of art executed before 1870 (unless these works are determined to be counterfeits created since 1870), as this is a matter of current scholarly opinion which can change; (b) titles, descriptions, or other identification of offered lots, which information normally appears in lower case type below the **BOLD TYPE** heading identifying the Authorship; (c) Authorship of any lot where it was specifically mentioned that there exists a conflict of specialist or scholarly opinion regarding the Authorship of the lot at the time of sale; (d) Authorship of any lot which as of the date of sale was in accordance with the then generally-accepted opinion of scholars and specialists regarding the same; or (e) the identification of periods or dates of creation in catalog descriptions which may be proven inaccurate by means of scientific processes that are not generally accepted for use until after publication of the catalog in which the property is offered or that were unreasonably expensive or impractical to use at the time of such publication.

LIMITATION OF LIABILITY

EXCEPT AS EXPRESSLY PROVIDED ABOVE, ALL PROPERTY IS SOLD "AS IS." NEITHER BONHAMS NOR THE CONSIGNOR MAKES ANY REPRESENTATION

OR WARRANTY, EXPRESS OR IMPLIED, AS TO THE MERCHANTABILITY, FITNESS OR CONDITION OF THE PROPERTY OR AS TO THE CORRECTNESS OF DESCRIPTION, GENUINENESS, ATTRIBUTION, PROVENANCE OR PERIOD OF THE PROPERTY OR AS TO WHETHER THE BUYER ACQUIRES ANY COPYRIGHTS OR OTHER INTELLECTUAL PROPERTY RIGHTS IN LOTS SOLD OR AS TO WHETHER A WORK OF ART IS SUBJECT TO THE ARTIST'S MORAL RIGHTS OR OTHER RESIDUAL RIGHTS OF THE ARTIST. THE BUYER EXPRESSLY ACKNOWLEDGES AND AGREES THAT IN NO EVENT SHALL BONHAMS BE LIABLE FOR ANY DAMAGES INCLUDING, WITHOUT LIMITATION, ANY COMPENSATORY, INCIDENTAL OR CONSEQUENTIAL DAMAGES. IN NO EVENT SHALL THE AGGREGATE LIABILITY OF BONHAMS AND ITS CONSIGNOR TO A PURCHASER EXCEED THE PURCHASE PRICE ACTUALLY PAID FOR A DISPUTED ITEM OF PROPERTY.

Seller's guide

SELLING AT AUCTION

Bonhams can help you every step of the way when you are ready to sell art, antiques and collectible items at auction. Our regional offices and representatives throughout the US are available to service all of your needs. Should you have any further questions, please visit our website at www.bonhams.com/us for more information or call our Client Services Department at +1 (415) 861 7500.

AUCTION ESTIMATES

The first step in the auction process is to determine the auction value of your property. Bonhams' world-renowned specialists will evaluate your special items at no charge and in complete confidence. You can obtain an auction estimate in many ways:

- Attend one of our Auction Evaluation Events held regularly at our galleries and in other major metropolitan areas. The updated schedule for Bonhams Auction Evaluation Events is available at www.bonhams.com/us.
- Call our Client Services Department to schedule a private appointment at one of our galleries. If you have a large collection, our specialists can travel, by appointment, to evaluate your property on site.
- Send clear photographs to us of each individual item, including item dimensions and other pertinent information with each picture. Photos should be sent to Bonhams' address in envelopes marked as "photo auction estimate". Alternatively, you can submit your request using our online form at www.bonhams.com/us. Digital images may be attached to the form. Please limit your images to no more than five (5) per item.

CONSIGNING YOUR PROPERTY

After you receive an estimate, you may consign your property to us for sale in the next appropriate auction. Our staff assists you throughout the process, arranging transportation of your items to our galleries (at the consignor's expense), providing a detailed inventory of your consignment, and reporting the prices realized for each lot. We provide secure storage for your property in our warehouses and all items are insured throughout the auction process. You will receive payment for your property approximately 35 days after completion of sale.

Sales commissions vary with the potential auction value of the property and the particular auction in which the property is offered. Please call us for commission rates.

PROFESSIONAL APPRAISAL SERVICES

Bonhams' specialists conduct insurance and fair market value appraisals for private collectors, corporations, museums, fiduciaries and government entities on a daily basis. Insurance appraisals, used for insurance purposes, reflect the cost of replacing property in today's retail market. Fair market value appraisals are used for estate, tax and family division purposes and reflect prices paid by a willing buyer to a willing seller.

When we conduct a private appraisal, our specialists will prepare a thorough inventory listing of all your appraised property by category. Valuations, complete descriptions and locations of items are included in the documentation.

Appraisal fees vary according to the nature of the collection, the amount of work involved, the travel distance, and whether the property is subsequently consigned for auction.

Our appraisers are available to help you anywhere and at any time. Please call our Client Services Department to schedule an appraisal.

ESTATE SERVICES

Since 1865, Bonhams has been serving the needs of fiduciaries – lawyers, trust officers, accountants and executors – in the disposition of large and small estates. Our services are specially designed to aid in the efficient appraisal and disposition of fine art, antiques, jewelry, and collectibles. We offer a full range of estate services, ranging from flexible financial terms to tailored accounting for heirs and their agents to world-class marketing and sales support.

For more information or to obtain a detailed Trust and Estates package, please visit our website at www.bonhams.com/us or contact our Client Services Department.

Buyer's guide

BIDDING & BUYING AT AUCTION

Whether you are an experienced bidder or an enthusiastic novice, auctions provide a stimulating atmosphere unlike any other. Bonhams previews and sales are free and open to the public. As you will find in these directions, bidding and buying at auction is easy and exciting. Should you have any further questions, please visit our website at www.bonhams.com or call our Client Services Department at +1 (415) 861 7500.

Catalogs

Before each auction we publish illustrated catalogs that include dates and times for previews and auctions. Our catalogs also provide descriptions and estimated values for each "lot." A lot may refer to a single item or to a group of items auctioned together. We offer our catalogs by subscription or by single copy. For information on subscribing to our catalogs, you may refer to the subscription form in this catalog, call our Client Services Department, or visit our website at www.bonhams.com/us.

Previews

Auction previews are your chance to inspect each lot prior to the auction. We encourage you to look closely and examine each object on which you may want to bid so that you will know as much as possible about it. Items are sold "as is" and with all faults; illustrations in our catalogs, website and other materials are provided for identification only. At the previews, our staff is always available to answer your questions and guide you through the auction process. Condition reports may be available upon request.

Estimates

Bonhams catalogs include estimates for each lot, exclusive of buyer's premium and tax. The estimates are provided as an approximate guide to current market value and should not be interpreted as a representation or prediction of actual selling prices. They are determined well in advance of a sale and are subject to revision. Please contact us should you have any questions about value estimates.

Reserves

All lots in a catalog are subject to a reserve unless otherwise indicated. The reserve is the minimum price that the seller is willing to accept for a lot. This amount is confidential and does not exceed the low estimated value.

BIDDING AT AUCTION

At Bonhams, you can bid in many ways: in person, via absentee bid, over the phone, or via Bonhams' online bidding facility. Absentee bids can be submitted in person, online, via fax or via email.

A valid Bonhams client account is required to participate in bidding activity. You can obtain registration information online, at the reception desk or by calling our Client Services Department.

By bidding at auction, whether in person or by agent, by absentee bid, telephone, online or other means, the buyer or bidder agrees to be bound by the Conditions of Sale.

Lots are auctioned in consecutive numerical order as they appear in the catalog. Bidding normally begins below the low estimate. The auctioneer will accept bids from interested parties present in the saleroom, from telephone bidders, and from absentee bidders who have left written bids in advance of the sale. The auctioneer may also execute bids on behalf of the consignor up to the amount of the reserve, but never above it.

We assume no responsibility for failure to execute bids for any reason whatsoever.

In Person

If you are planning to bid at auction, you will need to register at the reception desk in order to receive a numbered bid card. To place a bid, hold up your card so that the auctioneer can clearly see it. Decide on the maximum amount that you wish to pay, exclusive of buyer's premium and tax, and continue bidding until your bid prevails or you reach your limit. If you are the successful bidder on a lot, the auctioneer will acknowledge your paddle number and bid amount.

Absentee Bids

As a service to those wishing to place bids, we may at our discretion accept bids without charge in advance of sale by telephone, by facsimile or in writing on bidding forms available from us. "Buy" bids will not be accepted; all bids must state the highest bid price the bidder is willing to pay. Our auction staff will try to bid just as you would, with the goal of obtaining the

item at the lowest bid price possible. In the event identical bids are submitted, the earliest bid submitted will take precedence. Absentee bids shall be executed in competition with other absentee bids, any applicable reserve, and bids from other auction participants. A friend or agent may place bids on your behalf, provided that we have received your written authorization prior to the sale. Absentee bid forms are available in our catalogs, online at www.bonhams.com/us, and at our San Francisco, Los Angeles and New York galleries.

By Telephone

Under special circumstances, we can arrange for you to bid by telephone. To arrange for a telephone bid, please contact our Client Services Department a minimum of 24 hours prior to the sale.

Online

Web users may place absentee bids online from anywhere in the world. To bid online, please visit our website at www.bonhams.com/us.

We are pleased to make our live online bidding facility available to bidders in this sale.

Additional terms and conditions of sale relating to online bidding will apply. Please see www.bonhams.com/25814 or contact the Client Services Department to obtain information and learn how you can register and bid online in this sale.

Bid Increments

Bonhams generally uses the following increment multiples as bidding progresses:

\$50-200	by \$10s
\$200-500	by \$20/50/80s
\$500-1,000	by \$50s
\$1,000-2,000	by \$100s
\$2,000-5,000	by \$200/500/800s
\$5,000-10,000	by \$500s
\$10,000-20,000	by \$1,000s
\$20,000-50,000	by \$2,000/5,000/8,000s
\$50,000-100,000	by \$5,000s
\$100,000-200,000	by \$10,000s
above \$200,000	at auctioneer's discretion

The auctioneer may split or reject any bid at any time at his or her discretion as outlined in the Conditions of Sale.

Currency Converter

Solely for the convenience of bidders, a currency converter may be provided at Bonhams sales. The rates quoted for conversion of other currencies to U.S. Dollars are indications only and should not be relied upon by a bidder, and neither Bonhams nor its agents shall be responsible for any errors or omissions in the operation or accuracy of the currency converter.

Buyer's Premium

A buyer's premium is added to the winning bid price of each individual lot purchased, at the rates set forth in the Conditions of Sale. The winning bid price plus the premium constitute the purchase price for the lot. Applicable sales taxes are computed based on this figure, and the total becomes your final purchase price.

Unless specifically illustrated and noted, fine art frames are not included in the estimate or purchase price. Bonhams accepts no liability for damage or loss to frames during storage or shipment.

All sales are final and subject to the Conditions of Sale found in our catalogs, on our website, and available at the reception desk.

Payment

All buyers are asked to pay and pick up by 3pm on the business day following the auction. Payment may be made to Bonhams by cash, checks drawn on a U.S. bank, money order, wire transfer, or by Visa, MasterCard, American Express or Discover credit or charge card or debit card. All items must be paid for within 5 business days of the sale. Please note that payment by personal or business check may result in property not being released until purchase funds clear our bank.

Sales Tax

Residents of states listed in Paragraph 1 of the Conditions of Sale must pay applicable sales tax. Other state or local taxes (or compensation use taxes) may apply. Sales tax will be automatically added to the invoice unless a valid resale number has been furnished or the property is shipped via common carrier to destinations outside the states listed in

the Conditions of Sale. If you wish to use your resale license please contact Cashiers for our form.

Shipping & Removal

See page 146

Bonhams can accommodate shipping for certain items. Please contact our Cashiers Department for more information or to obtain a quote. Refer to Conditions of Sale for special terms governing the shipment of Arms and Wine. Shipments are made during weekday business hours up to four weeks after payment is received. Carriers are not permitted to deliver to P.O. Boxes.

International buyers are responsible for all import/export customs duties and taxes. An invoice stating the actual purchase price(s) will accompany all international purchases.

Simultaneous sale property collection notice:

If this sale previews in multiple cities, please see the title page for details regarding final location of property for collection.

Auction Results

Auction results are usually available on the next business day following the sale or online at www.bonhams.com/us.

Auction Registration Form

(Attendee / Absentee / Online / Telephone Bidding)

Please circle your bidding method above.

--	--	--	--

Paddle number (for office use only)

General Notice: This sale will be conducted in accordance with Bonhams Conditions of Sale, and your bidding and buying at the sale will be governed by such terms and conditions. Please read the Conditions of Sale in conjunction with the Buyer's Guide relating to this sale and other published notices and terms relating to bidding. Payment by personal or business check may result in your property not being released until purchase funds clear our bank. Checks must be drawn on a U.S. bank.

Notice to Absentee Bidders: In the table below, please provide details of the lots on which you wish to place bids at least 24 hours prior to the sale. Bids will be rounded down to the nearest increment. Please refer to the Buyer's Guide in the catalog for further information relating to instructions to Bonhams to execute absentee bids on your behalf. Bonhams will endeavor to execute bids on your behalf but will not be liable for any errors or non-executed bids.

Notice to First Time Bidders: New clients are requested to provide photographic proof of ID - passport, driving license, ID card, together with proof of address - utility bill, bank or credit card statement etc. Corporate clients should also provide a copy of their articles of association / company registration documents, together with a letter authorizing the individual to bid on the company's behalf. Failure to provide this may result in your bids not being processed. For higher value lots you may also be asked to provide a bankers reference.

Notice to online bidders: If you have forgotten your username and password for www.bonhams.com, please contact Client Services.

If successful

- I will collect the purchases myself
- Please contact me with a shipping quote (if applicable)
- I will arrange a third party to collect my purchase(s)

Please email or fax the completed Registration Form and requested information to:

Bonhams Client Services Department
 7601 W. Sunset Blvd
 Los Angeles, California 90046
 Tel +1 (323) 850 7500
 Fax +1 (323) 850 6090
bids.us@bonhams.com



Sale title: Modern Design Art		Sale date: March 29, 2020	
Sale no. 25814		Sale venue: Los Angeles	
General Bid Increments:			
\$10 - 200by 10s		\$10,000 - 20,000by 1,000s	
\$200 - 500by 20 / 50 / 80s		\$20,000 - 50,000by 2,000 / 5,000 / 8,000s	
\$500 - 1,000by 50s		\$50,000 - 100,000by 5,000s	
\$1,000 - 2,000by 100s		\$100,000 - 200,000by 10,000s	
\$2,000 - 5,000by 200 / 500 / 800s		above \$200,000at the auctioneer's discretion	
\$5,000 - 10,000by 500s		The auctioneer has discretion to split any bid at any time.	
Customer Number		Title	
First Name		Last Name	
Company name (to be invoiced if applicable)			
Address			
City		County / State	
Post / Zip code		Country	
Telephone mobile		Telephone daytime	
Telephone evening		Fax	
Telephone bidders: indicate primary and secondary contact numbers by writing ① or ② next to the telephone number.			
E-mail (in capitals) _____			
By providing your email address above, you authorize Bonhams to send you marketing materials and news concerning Bonhams and partner organizations. Bonhams does not sell or trade email addresses.			
I am registering to bid as a private client <input type="checkbox"/>		I am registering to bid as a trade client <input type="checkbox"/>	
Resale: please enter your resale license number here _____ We may contact you for additional information.			

SHIPPING	
Shipping Address (if different than above):	
Address: _____	Country: _____
City: _____	Post/ZIP code: _____

Please note that all telephone calls are recorded.

Type of bid (A-Absentee, T-Telephone)	Lot no.	Brief description (In the event of any discrepancy, lot number and not lot description will govern.) If you are bidding online there is no need to complete this section.	MAX bid in US\$ (excluding premium and applicable tax) Emergency bid for telephone bidders only*

You instruct us to execute each absentee bid up to the corresponding bid amount indicated above.

* Emergency Bid: A maximum bid (exclusive of Buyer's Premium and tax) to be executed by Bonhams only if we are unable to contact you by telephone or should the connection be lost during bidding.

BY SIGNING THIS FORM YOU AGREE THAT YOU HAVE READ AND UNDERSTAND OUR CONDITIONS OF SALE AND SHALL BE LEGALLY BOUND BY THEM, AND YOU AGREE TO PAY THE BUYER'S PREMIUM, ANY APPLICABLE TAXES, AND ANY OTHER CHARGES MENTIONED IN THE BUYER'S GUIDE OR CONDITIONS OF SALE. THIS AFFECTS YOUR LEGAL RIGHTS.	
Your signature: _____	Date: _____

Index

- A**
Adler, Allan 120, 121, 122
Aho, Kaarina 150
Alf, Martha 367
Arad, Ron 225
Arequipa Pottery 6
Autio, Rudy 377, 378, 379
- B**
Bacerra, Ralph 327
Bahar, Bijan 180
Baier, Fred 299
Barovier, & Toso 117
Barton, Glenys 322
Beasley, Bruce 184
Beck, Rick 275
Bertoia, Val 183
Blunk, JB 334, 335, 336, 337, 338
Botero, Fernando 215
Boym, Constantin 227
Brady, Robert David 306, 307
Bufano, Beniamino Benvenuto 189, 190, 191, 192
Buffa, Paolo 110
- C**
Cabat, Rose 345, 348
Cable, Margaret 5
Callas, Peter 358
Castiglioni, Pier Giacomo 241
Chamberlain, John 368
Chapman Turner, Robert 360
Chiesa, Pietro 105
Chihuly, Dale 288, 289, 290, 291
Cooper, Waistel 324, 374, 375
Curmeen, Claire 320
- D**
Da Ros, Antonio 168
Dailey, Dan 286
De Staebler, Stephen 314, 315
De Wolfe, Elsie 85
Deese, Rupert J. 349
DeVore, Richard 352
Dickinson, John 216
Donati, Enrico 279
Duckworth, Ruth 351, 353, 354
Duquette, Tony 84, 86, 87, 88, 89
Durot, Louis 229
- E**
Eames, Charles & Ray 147
Evans, Paul 259
- F**
Ferguson, Kenneth 371
Feves, Betty 372
Fortescue, Donald 301
- G**
Gálvez, Byron 357
Gallé, Émile 19, 21
Graham, Robert 187
Grillo, John 111
- H**
Haines, William 90, 91, 92, 93, 94, 95, 96, 97, 98, 99, 100, 101, 102, 103, 104
Hare, Dennis 185
Haring, Keith 226
Henderson, Ewen 363
Hindman, Paul 12
Hunt, Bryan 188
- I**
Ingrand, Max 137, 138
Inoue, Tsuyoshi 282
- J**
James, Clayton 364
Jensen, Georg 67, 68, 69, 71, 72, 75, 76, 77, 78, 79
- K**
Kaneko, Jun 310
Kenna, Michael 131
Kestrel, Steve 193, 194, 195, 196, 197
Knight, Chris 132
Knoll, Florence 149, 153
Knox, Archibald 28
Koons, Jeff 220, 280
Kuramata, Shiro 222
- L**
Lalique, René 29
Lamb, Walter 161, 162, 163, 164, 165, 166
Laverne, Philip and Kelvin 174, 175, 178
Lawrence, Les 319
Leach, Janet 366
Lee, Cliff 361
Levenson, Silvia 276
Lewis, John 287
Lipski, Donald 285
Loewy, Raymond Fernand 49, 50, 51, 52, 53, 54, 55, 57, 58, 60, 62
London, Mimi 201
Lovera, James 339, 342
Lu, Zheng 228
Lucero, Michael 321
- M**
Maberry, Phillip 373
Mac, El 245, 265
Majorelle, Louis 23, 24, 25
Malooof, Sam 208, 211, 212
Manz, Bodil 296
Martens, Dino 115, 116
Matta, Roberto Sebastián 151
Mayne, Thom 223
McCobb, Paul 123, 124, 125
McIntosh, Harrison 346, 350
McNaughton, John 224
Meier, Richard 266
Michelsen, Anton 118
Middlemiss, Jon 298
Miró, Joan 35, 36
Morris, William C. 292, 293, 294, 295
Moses, Ed 152
Mueller, Louis 308
Munchow, Marianne von 209
- N**
Nadier, Carl 213
Natkin, Robert 4
Natzler, Gertrud & Otto 343, 344
Natzler, Otto 340, 341
Newcomb College Pottery 3
Nielsen, Harald 63, 65, 80
Nieman, Leonardo 355
Nieto, Rodolfo 210
Notkin, Richard 325
- O**
O'Neil, Mike 206, 207
- P**
Palombo, David 205
Panton, Verner 179
Pearson, Colin 370
Philp, Paul 362
Platner, Warren 172, 244
Pomone, Atelier 37
- R**
Redmile, Anthony 202, 203, 204
Reekie, David 309
Regan, David 369
Reid, Colin 313
Rena, Nicholas 300
Retna 248, 249, 250
Rie, Lucie 155, 156, 157, 158, 159, 160
Risley, John 186
Ritter, Richard 281
Robsjohn-Gibbings, T.H. 81, 82, 83
Roehrig, Frederick L. 10
Rohde, Johan 64, 66, 70, 73, 74
Roubicek, Rene 312
Rougier, Roger 240
- S**
Sakier, George 34
Salmon, Antonia 297
Sanso, Juvenal 2
Sarfatti, Gino 154
Sarhou, Maurice Elie 347
Saura, Antonio 128
Scarpa, Carlo 33, 108
Schwarcz, June 332, 333
Scott, J. Robert 237
Shoji, Hamada 365
Shulman, Julius 59
Simon, Laurance 316, 317
Slee, Richard 302, 303, 305
Smith, Hassel 219
Sokolsky, Melvin 148
Soldner, Paul 323
Somaini, Francesco 214
Springer, Karl 181, 182
Statom, Therman 284, 311
Steinberg, Saul 61
Stern, Lucia 126
- T**
Takaezu, Toshiko 331
Takamori, Akio 318, 376
Taylor, Michael 198, 199, 200
Tiffany Studios 9, 15, 18
Turner, Robert 359
- U**
Ungethüm, August 30
- V**
Vallien, Bertil 277, 278
Venini, Paolo 221
Voukos, Peter 328, 329, 330
- W**
Walentynowicz, Janusz 283
Warff, Ann 170
Wearstler, Kelly 239, 260, 261
Wirkkala, Tapio 130
- Z**
Zúñiga, Francisco 7, 8, 11





Bonhams
7601 W. Sunset Boulevard
Los Angeles, CA 90046

+1 323 850 7500
bonhams.com

Photographed at Tony Duquette's Dawnridge

AUCTIONEERS SINCE 1793