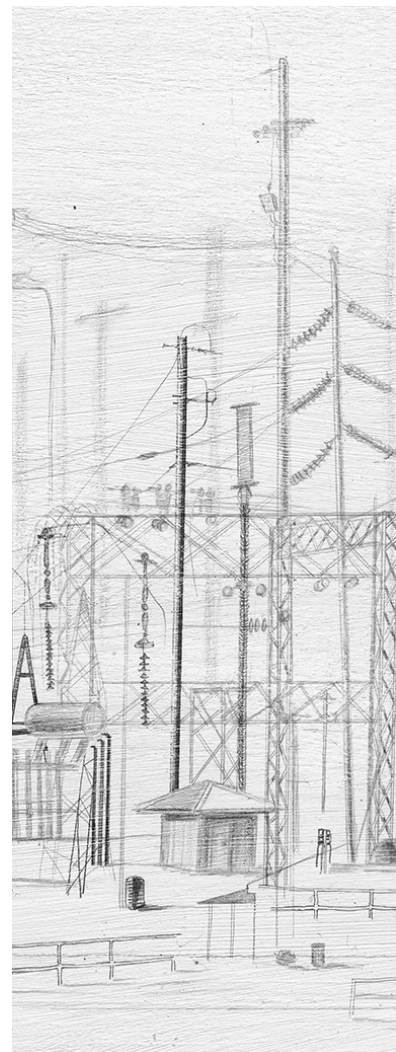
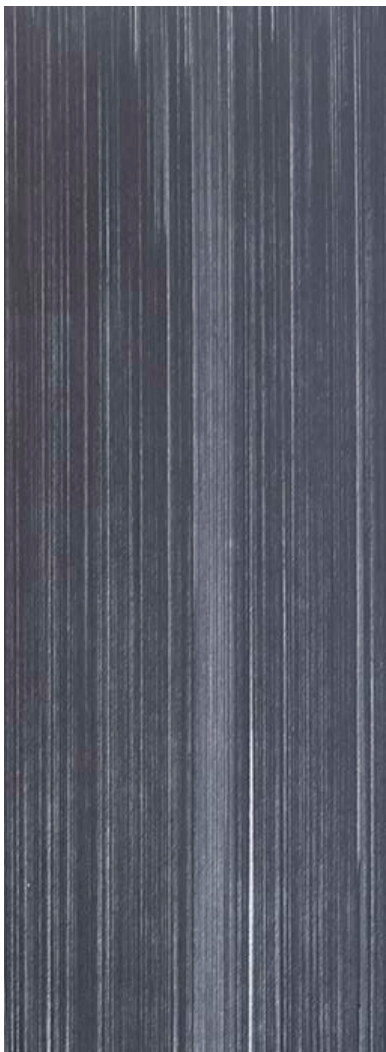
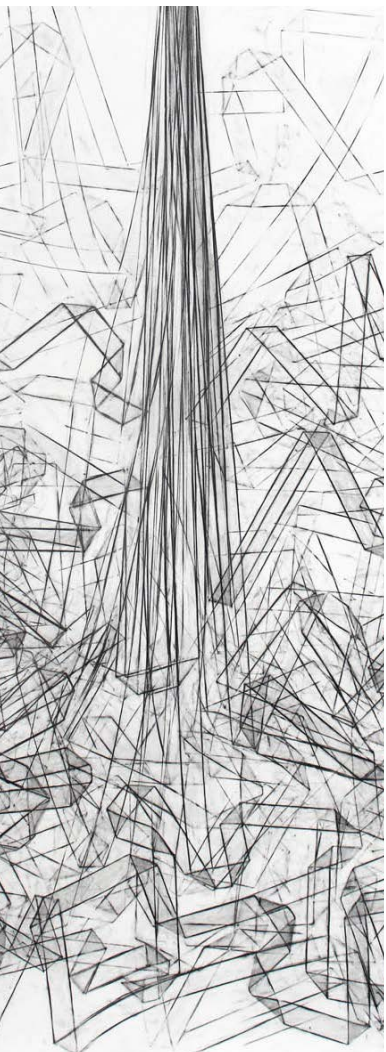


CYNTHIA-REEVES

METALPOINT & GRAPHITE

Alisa Dworsky, Gudrun Mertes-Frady, Anne Lindberg
and Shona Macdonald



December 10 - January 28

The Barn at 28 Main Street, Walpole, NH

ALISA DWORSKY



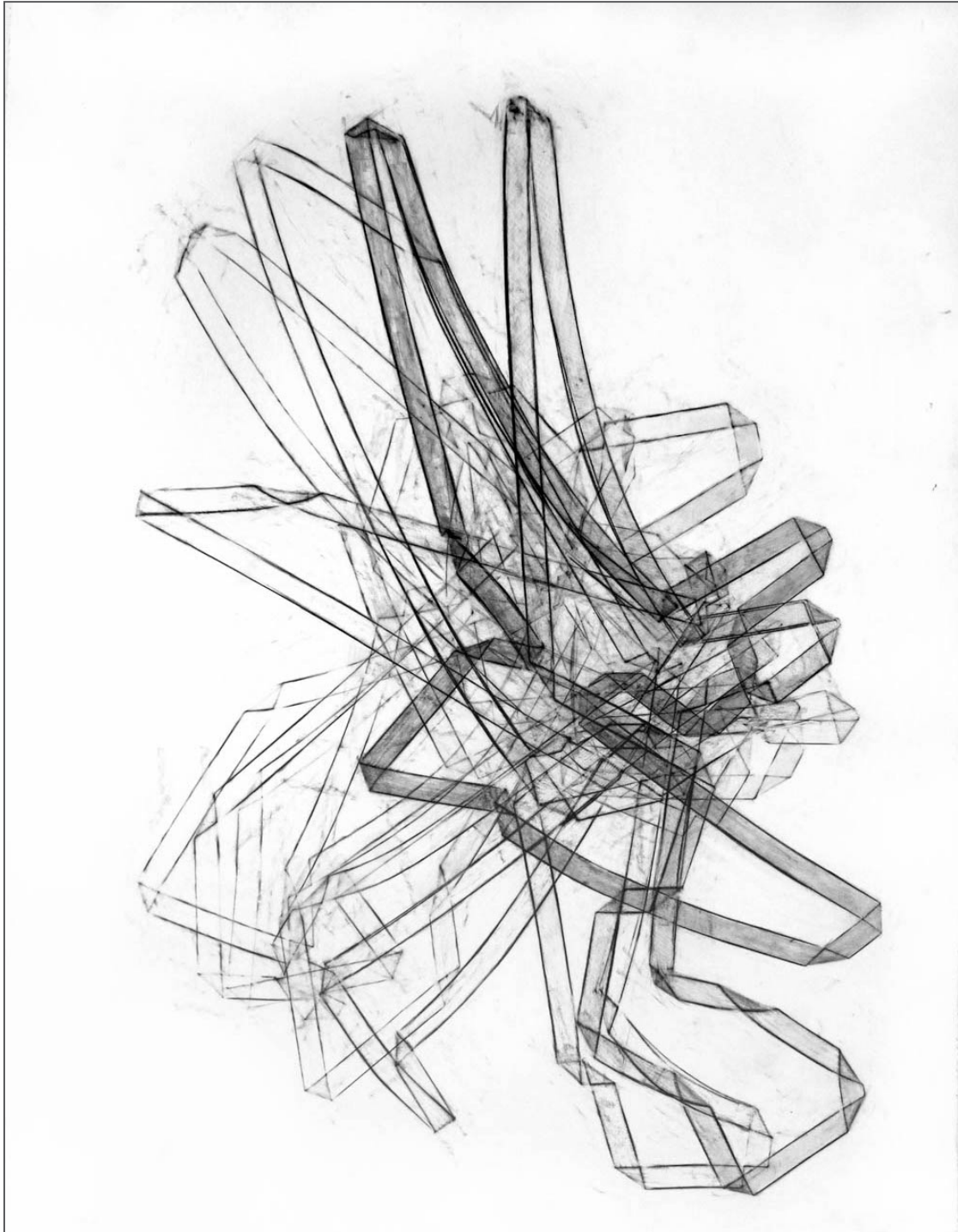
Alisa Dworsky is an artist and architectural designer whose work includes sculpture, installations, buildings, drawings and prints. With a cross-disciplinary approach, she allows her work in one discipline to influence her work in another. She is interested in how structure and force give shape to form, and in the way we use geometric systems to order our environments. Her drawings inspired by movement and rhythms imparted by textiles, agricultural patterns, computer drawings, topographical maps, and architecture are studies of her completed works or harbingers of works to be realized.

CYNTHIA-REEVES



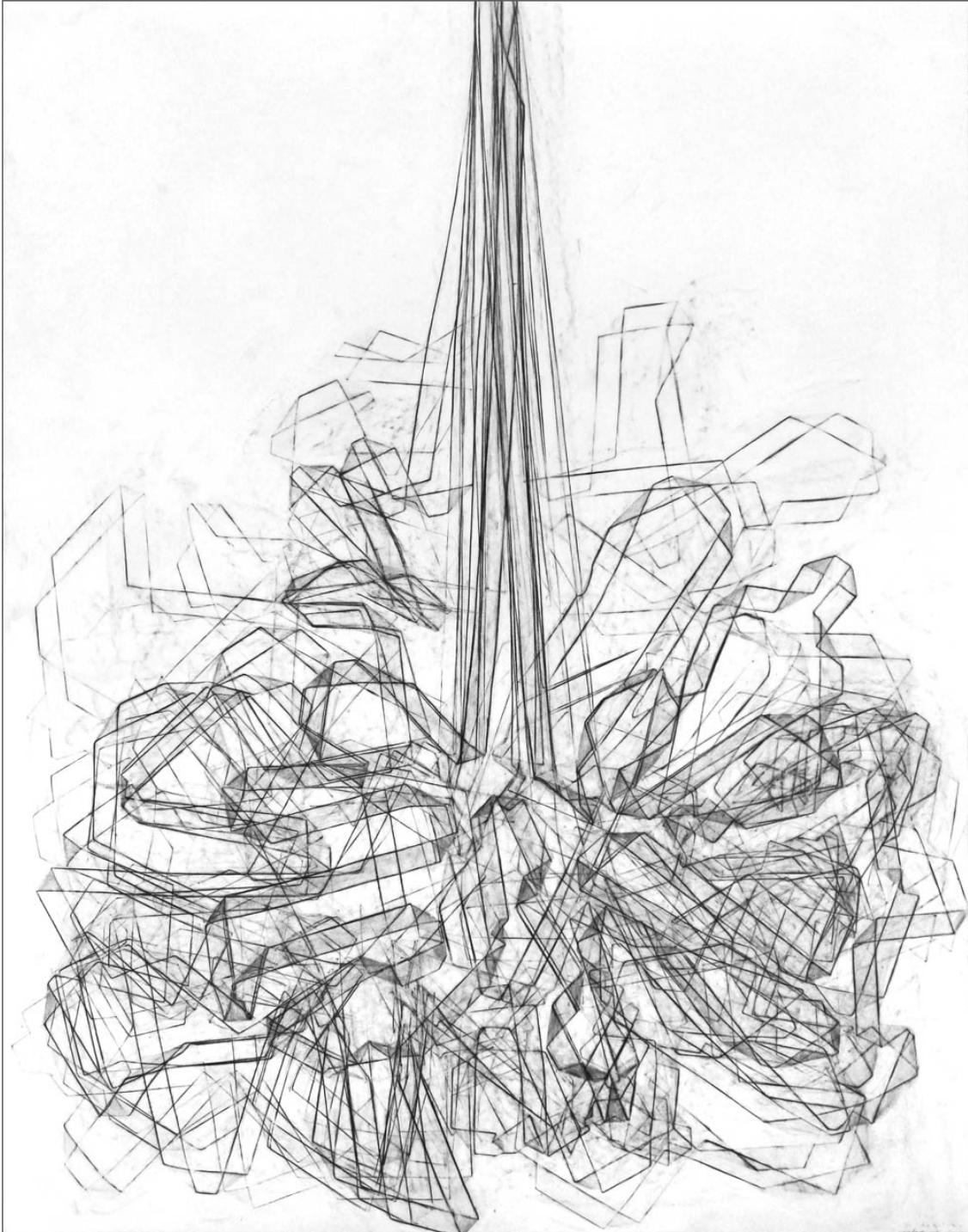
Alisa Dworsky, *Entertwine 8*, 2015, graphite on paper, 50 x 38 inches

CYNTHIA-REEVES



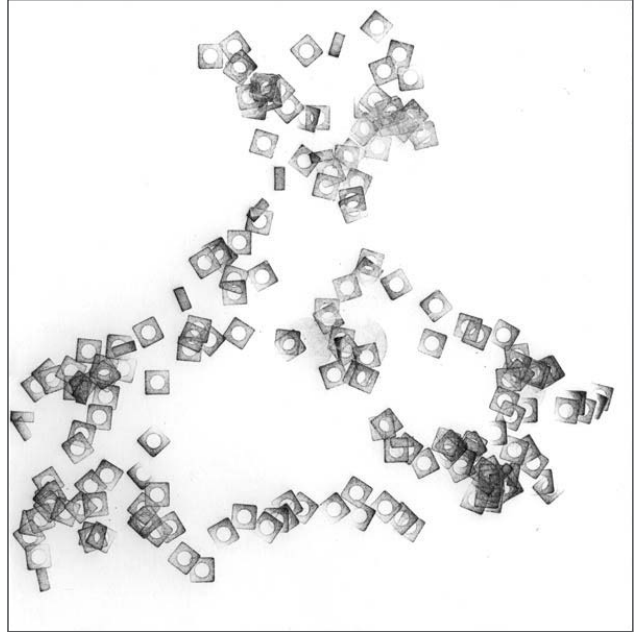
Alisa Dworsky, *Mosh 3*, 2015, graphite on paper, 50 x 38 inches

CYNTHIA-REEVES



Alisa Dworsky, *Ravel 2*, 2015, graphite on paper, 50 x 38 inches

CYNTHIA-REEVES



Alisa Dworsky, *Follow the Nut* series, 2016, graphite on paper, each 11 x 11 inches

CYNTHIA - REEVES

ALISA DWORSKY

EDUCATION

- 1992 Yale University, Graduate School of Architecture, M. Arch
1988 Stanford University, B.A. with Majors in Studio Art and in International Relations

SOLO EXHIBITIONS

- 2015 Vermont College of Fine Arts, Montpelier, VT, Over and Under, installation
Brattleboro Museum, Brattleboro, VT, Motion-Line-Form, a commissioned installation, drawings
- 2011 BCA Center, Burlington City Arts, Burlington, VT, Solo Show- installations and prints
Catherine Dianich Gallery, Brattleboro, VT , Solo Show- prints, drawings and sculpture
- 2009 Waterfront Park, Burlington City Arts, Burlington, VT, On the Level/Under Water, commissioned installation
- 2008 Chaffee Arts Center, Rutland, VT, Solo Show: Prints, drawings, sculpture
Brattleboro Museum, Brattleboro, VT, InTension , commissioned installation
- 2002 Castleton State College Gallery, Castleton, VT, Solo Show, drawings
AVA Gallery, Lebanon, NH, Solo Show: prints, drawings, sculpture
Chandler Gallery, Randolph, VT, Solo Show: Drawings
- 2001 Vermont Agency of Transportation, Installation on Route 4, Castleton, VT, Luminous Fields: Longitude in Time
Norwich University Division of Art and Architecture Gallery, Northfield, VT, Solo Show: drawings
- 1998 Main St. Museum of Art, Hartford, VT, Solo Show: sculpture and drawings

SELECT GROUP EXHIBITIONS

- 2015 Kent Museum, Kent Corners, VT, prints and drawings in Verve
- 2014 Chandler Center For The Arts, Randolph, VT, Prints in Finding a Common Thread
Vermont Metro Gallery, BCA Center, Burlington, VT, Prints in Sole
YCVT, Vermont College of Fine Arts, Montpelier, VT, Drawings in systematic paradox.
Artspace, New Haven, CT, Drawing in Something Blue
- 2013 Lexington Art League, Lexington, KY, Inside Out, a Commissioned Installation in On Site
Artspace New Haven, CT, Drawn Out - installation and drawings in Flat/Not Flat, curated by Jeff Bergman of Pace Prints
Solar Decathlon, Irvine, CA , print on display in Delta T90 houses
- 2012 516 Arts, Albuquerque, NM, Soledad- Commissioned Installation with poet Miriam Sagan in Time Pieces:
Wendover Landing
Visual Arts Gallery, New Jersey City University, Jersey City, NJ. Arcadia Now, curated by Tom McGlynn (catalogue)
- 2011 Castleton State College Gallery, Castleton, VT, Arcadia Now
Kasini House, Montreal, QC Canada, Hello From Vermont, (catalogue)
- 2010 Cynthia Reeves Projects, Newport Mills, Newport, NH, installations InTension and Taper with Counterweight in the exhibit Fabrications
Bennington Museum, Bennington, VT, Transfer/Transform, commissioned installation in State of Craft
Nave Gallery, Somerville MA Elements: Line, Color, Form, 3 person show.
Silvermine Arts Guild Gallery, New Caanan, CT, Art of the Northeast
Vermont Historical Society, Montpelier, VT, To Life: Celebrating Vermont's Jewish Women
- 2009 Carroll and Sons Gallery, Boston MA. 10 years of the Boston Drawing Project
- 2008 The Attleboro Arts Museum, Attleboro, MA, MGNE national exhibition
The Art Complex Museum, Duxbury, MA, Etch and Sketch
Two Rivers Printmaking Studio, White River Junction, VT, prints, 2 person show
- 2007 Fleming Museum, University of Vermont, Burlington, VT, A Time to Rend and a Time to Sew, commissioned installation in Material Pursuits, curated by Evelyn Hankins (Catalogue)

CYNTHIA - REEVES

SELECT GROUP EXHIBITIONS (Continued)

- 2006 Two Rivers Printmaking Studio, White River Junction, VT, Momenta II
- 2004 Flynn Dog Gallery, Burlington, VT, AXA: architects by art, art by architects.
- 2003 Cooper-Hewitt National Design Museum, New York, NY, National Design Triennial
- 2002 PAINTINGS!, 2002 AVA Gallery, Lebanon, NH, Prints by Members of the Two Rivers Print Studio
Sculpture Fest, Woodstock, VT
- 2001 CU Galleries, University of Colorado, Boulder, CO, Designs on the Front Range: Architecture Here and Now
- 1997 Norwich University Division of Art and Architecture Gallery, Northfield, VT
- 1995 Yale University, Schools of Art and Architecture Gallery, New Haven, CT

GRANTS & AWARDS

- 2013 Berkshire Taconic Foundation, A.R.T. Fund Grant
- 2013 Sustainable Arts Foundation, Promise Award
- 2013 Vermont Community Foundation, Arts Endowment Fund Grant
- 2012 Vermont Arts Council, Creation Grant
- 2010 Vermont Community Foundation, Arts Endowment Fund Grant
- 2009 Vermont Arts Council, Creation Grant
- 2007 Vermont Community Foundation, Arts Endowment Fund Grant
- 2007 Vermont Arts Council, Development Grant
- 2006 Vermont Arts Council, Creation Grant
- 2005 Momenta II print competition, Juried Choice Award
- 2001 Vermont Community Foundation Grant
- 2001 Vermont Arts Council, Standard Grant
- 2001 Vermont Arts Council, Incentive Grant
- 1998 Vermont Studio Center, Residency Grant
- 1996 International Small Home Design Competition, winning design entry
- 1992 Yale University, School of Architecture, Samuel Jay Fogelson Award for excellence in design
- 1987 Stanford University, Golden Grant, for painting
- 1987 Stanford University, Hannenberg Award, for outstanding graduate in printmaking

COLLECTIONS

The Drawing Center Viewing Program, New York, NY, Juried Image Registry
ArtSpace, New Haven, CT, curated flat file collection
Vermont Arts Council, Juried artist
Meditech
Commissioned Temporary Installations Created for:
Brattleboro Museum, Brattleboro Vermont
516 ARTS, Albuquerque New Mexico
Burlington City Arts, City of Burlington Vermont,
Bennington Museum, Bennington Vermont,
Lexington Art League, Lexington Kentucky,
Fleming Museum, Burlington Vermont

RESIDENCIES

- 2016 Ragdale, Residency, Lake Forest, IL
- 2015 Yaddo, Residency Fellowship, Saratoga Springs, NY
- 2009 Vermont Studio Center, Vermont artist's week, Johnson, VT
- 2003 The Carving Studio and Sculpture Center, artist in residence, invitational, West Rutland, VT
- 1998 Vermont Studio Center, 2 week residency in printmaking, Johnson, VT
- 1997 Vermont Studio Center, Vermont artist's week, Johnson, VT
- 1996 Vermont Studio Center, Vermont artist's week, Johnson, VT

GUDRUN MERTES-FRADY



Gudrun Mertes-Frady's grounding principals in both her paintings and drawings are clarity and structure, pared down to essential forms. For her paintings, geometry is a timeless organizing principle, and is the underlying matrix or architecture of her work. Her drawings rely on a different platform – an organic arising of shape elicited from her layering of marks. Using graphite, charcoal, and metallic sticks, she creates a rich, luscious surface of curvilinear marks over a densely worked background.

CYNTHIA-REEVES



Gudrun Mertes-Frady, *Cloud*, charcoal, graphite, and metal stick on paper, 36 x 51.5 inches

CYNTHIA-REEVES



Gudrun Mertes-Frady, *Cloud*, charcoal, graphite, and metal stick on paper, 25.5 x 38 inches

CYNTHIA-REEVES



Gudrun Mertes-Frady, *Metalle II*, charcoal, graphite, and metal stick on paper, 25.5 x 38 inches

CYNTHIA-REEVES

GUDRUN MERTES-FRADY

BORN

Born in Cologne, Germany

Lives and works in Brooklyn, NY

SELECT SOLO EXHIBITIONS

- 2016 Markel Fine Arts, New York, NY
- 2015 Cynthia Reeves, MASS MoCA Way, North Adams, MA
- 2014 Michael Trierweiler Contemporary Art, Weimar, Germany
- 2013 Mark Wolf Contemporary, San Francisco, CA
- 2010 Piquion+Trierweiler, Weimar, Germany
ART Karlsruhe, Karlsruhe, Germany
- 2009 Maud Piquion, Berlin, Germany
Cynthia-Reeves, New York, NY
- 2007 Reeves-Contemporary, New York, NY
Spheris Gallery, Hanover, NH
- 2005 Reeves-Contemporary, New York, NY
- 2003 Rosenberg + Kaufman Fine Art, New York, NY
- 2002 Rosenberg + Kaufman Fine Art, New York, NY
- 2000 Rosenberg + Kaufman Fine Art, New York, NY
- 1999 Rosenberg + Kaufman Fine Art, New York, NY
- 1997 Rosenberg + Kaufman Fine Art, New York, NY
- 1995 Rosenberg + Kaufman Fine Art, New York, NY
- 1994 Stephen Rosenberg Gallery, New York, NY
- 1992 Stephen Rosenberg Gallery, New York, NY
- 1991 Galerie Lommel, Cologne-Leverkusen, Germany

SELECT GROUP EXHIBITIONS

- 2016 "Transformation and Renewal", Art in Embassies, Bandar Seri Begawan, Brunei
Sideshow Nation III, Sideshow Gallery, Brooklyn, NY
- 2015 August Geometry, Maria Wood Gallery, Atlanta, GA
Art in Embassies, Bandar Seri Begawan, Brunei
Sideshow Nation III, Sideshow Gallery, Brooklyn, NY
Paperazzi, Janet Kurnatowski Gallery, Brooklyn, NY
- 2014 Paper Show, Janet Kurnatowski Gallery, Brooklyn, NY
Sideshow Nation II, Sideshow Gallery, Brooklyn, NY
- 2013 Sideshow Nation, Sideshow Gallery, Brooklyn, NY
- 2012 Paper Bands, Jason MCCoy Gallery, New York, NY
Kentler International Drawing Space, Brooklyn, NY
Mic : Check, Sideshow Gallery, Brooklyn, NY
- 2011 Mark Wolf Contemporary, San Francisco, CA
Divergent Affinities, Wexler Gallery, Philadelphia, PA, curated by Barbara Harberger
- 2008 Nuture Art Benefit, curated by Lilly Wei, James Cohan Gallery, New York, NY
Small Works Show, 80 Washington Square Galleries, New York, NY
- 2007 Reeves-Contemporary, New York, NY
- 2005 Spheris Gallery, Hanover, NH
- 2003 A Common Thread, Hennepin County Government Center, Saint Paul, MN
- 2002 Here is New York, Corcoran Gallery, Washington, DC
Here is New York, Les Recontres d'Arles, Arles, France
Here is New York, Martin Gropius-Bau, Berlin, Germany

CYNTHIA - REEVES

SELECT GROUP EXHIBITIONS (continued)

- 2002 Here is New York, Museum of Modern Art, New York, NY
Here is New York, Chicago Cultural Center, Chicago, IL
Here is New York, University of California, Berkley, CA
- 2001 Synopsis, Rosenberg + Kaufman Fine Art, New York, NY
Art 2001, e1 Gallery, London, England
- 2000 Sun Signs, Rosenberg + Kaufman Fine Art, New York, NY
(Un)Resolved, Rosenberg + Kaufman Fine Art, New York, NY
- 1996 Art Initiative Gallery, New York, NY Group exhibition, curated by Stephen Rosenberg
- 1994 Summer Solstice, Stephen Rosenberg Gallery, New York, NY curated by Fran Kaufman
- 1993 Cadavre Exquis, The Drawing Center, New York, NY
The Tenth Summer, Stephen Rosenberg Gallery, New York, NY

SELECTED PUBLIC COLLECTIONS

The Busch Reisinger Museum, Harvard University, Cambridge MA
Art in Embassies, Permanent Collection US Consulate Dubai, UAE
The Rockefeller University, New York, NY
Collection Werner Kramarsky, New York, NY
Universal Music, London, England
Collection Gwyneth Paltrow, NY
Cohen & Lord, Santa Monica, CA
Robins, Kaplan, Miller & Ciresi, Minneapolis, MN
Kurt Solomon Associates International
Princess Cruise Lines, Los Angeles, CA (commission)
Thomas Weisel Partners, San Francisco, CA
Collection at Coventry, Fort Washington, PA
GENSLER Project, Miami, FL
50 UN Plaza, NY

SELECT BIBLIOGRAPHY

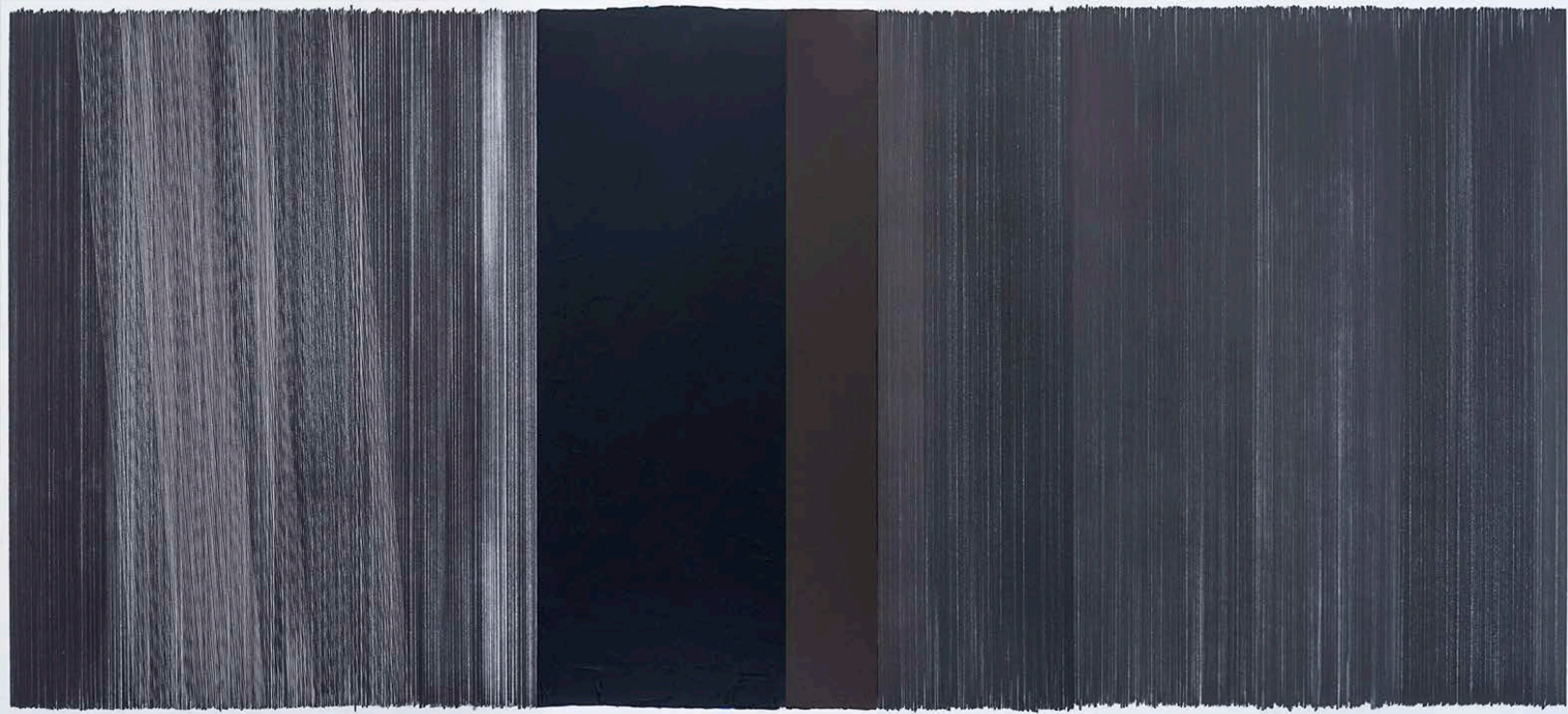
- 2016 Charles A, Riley II, Hamptons Art Hub, August 31
- 2015 Jerry Cullum, Arts Atlanta, Atlanta, GA, August 26
- 2011 Edith Newhall, Philadelphia Inquirer, Philadelphia, PA, January 17
- 2009 Martin Stolzenberg, TLZ, Weimar, Germany, December 9
Andrea Hilgenstock, Die Welt, Berlin, Germany, November 17
Jens Hindrichsen, Der Tagesspiegel, Berlin, Germany, November 3
- 2007 Constance Wyndham, Artnews, May
Mario Naves, Catalogue Essay, Reeves-Contemporary
Joseph Wallentini, Review, Abstract Art On Line, April
- 2004 Edward Leffingwell, Art in America, May
- 2003 Ann Landi, ARTnews, December
Mario Naves, New York Observer, October 1
- 2002 Lilly Wei, Catalog Essay, Rosenberg+Kaufman Fine Art, NYC
- 2000 Ken Johnson, The New York Times, November 3
Joseph Wallentini, Review, Abstract Art on Line, November
- 1999 Joseph Wallentini, Artist Profile, Abstract Art on Line, June
Jeannie Wilkinson, Catalogue Essay, Rosenberg + Kaufman Fine Art, NYC
Joseph Wallentini, Artist Profile, Abstract Art on Line, June
- 1997 Lissa McClure, Review Magazine
Arlene Raven, Catalog Essay, Rosenberg+Kaufman Fine Art, NYC

ANNE LINDBERG



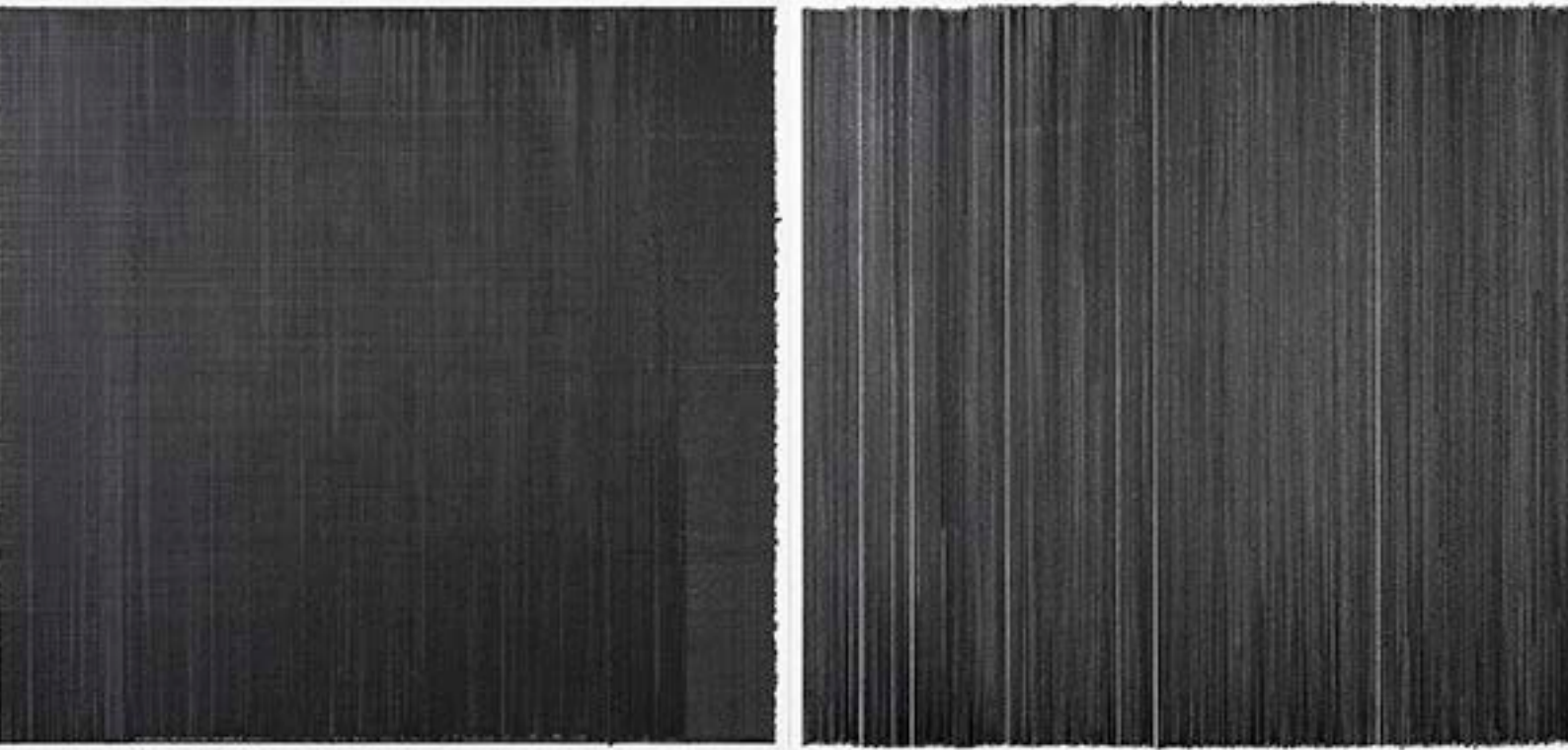
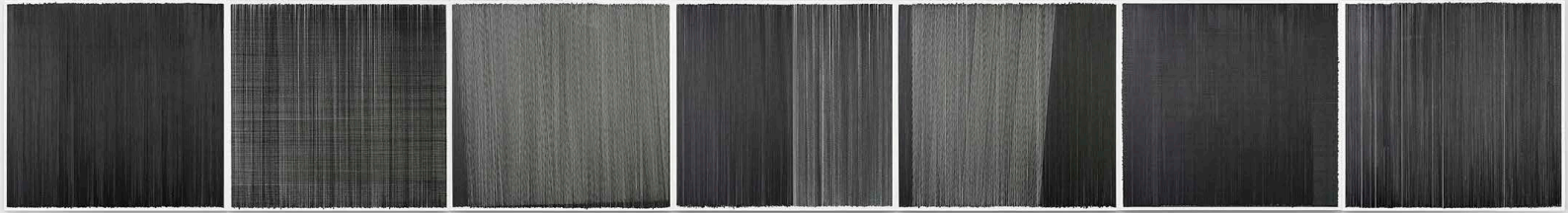
Anne Lindberg's sculpture and drawings inhabit an unspoken place. Systemic and non-representational, her works are subtle, rhythmic, abstract, and immersive. She finds beauty and disturbance through shifts in the densities of her controlled graphite line, layering the medium to realize surprising passages of tone, density, speed, path and frequency. At scale, her room-sized drawing installations offer an optical and spatial phenomenon that excites and confuses the eye – a tremendous degree of power elicited from the simplicity of line.

CYNTHIA-REEVES



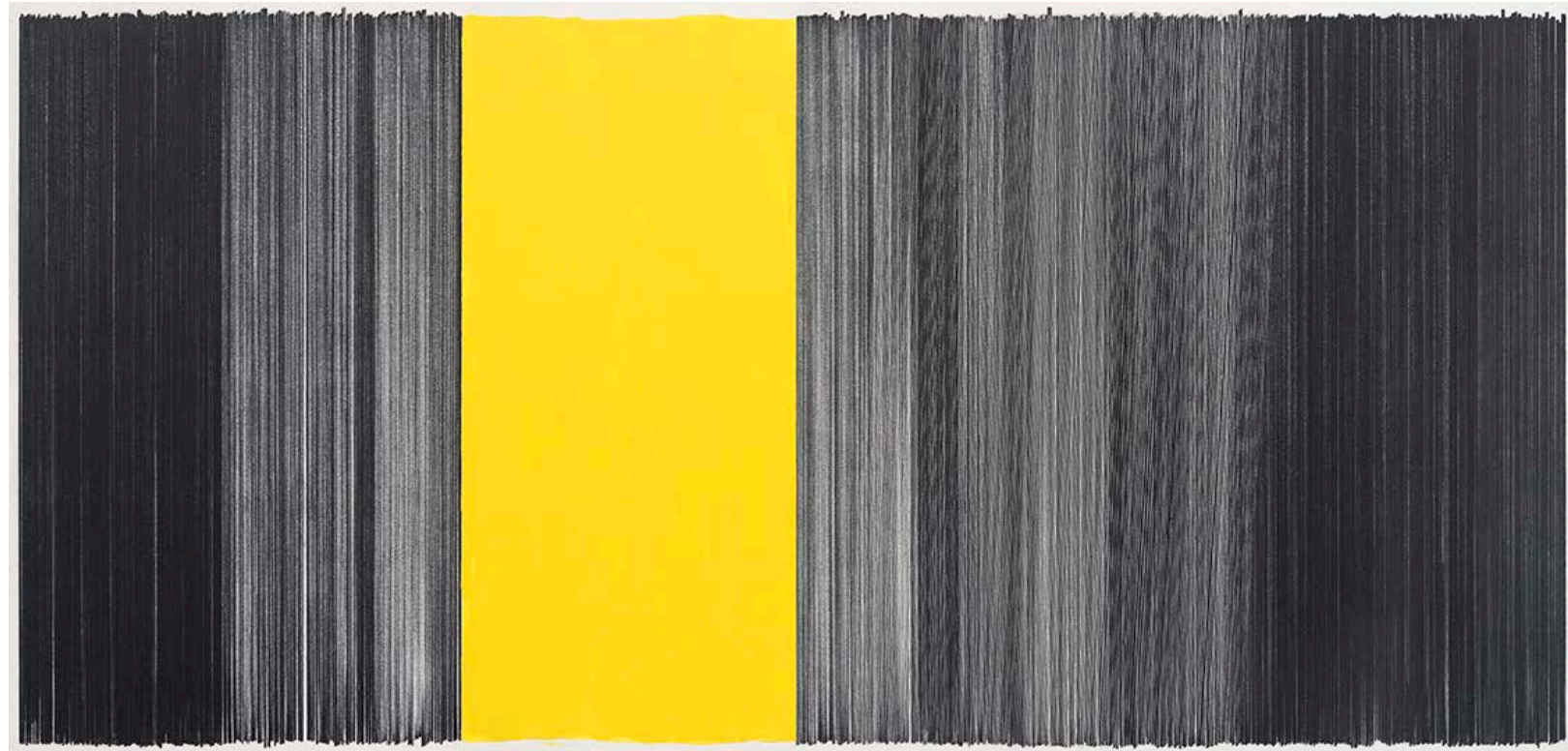
Anne Lindberg, *drawing black 02*, 2015, graphite and acrylic on cotton mat board, 20 x 44 inches

CYNTHIA-REEVES



Anne Lindberg, *drawing black*, 2015, graphite and acrylic on cotton mat board, 17 x 126 inches

CYNTHIA-REEVES



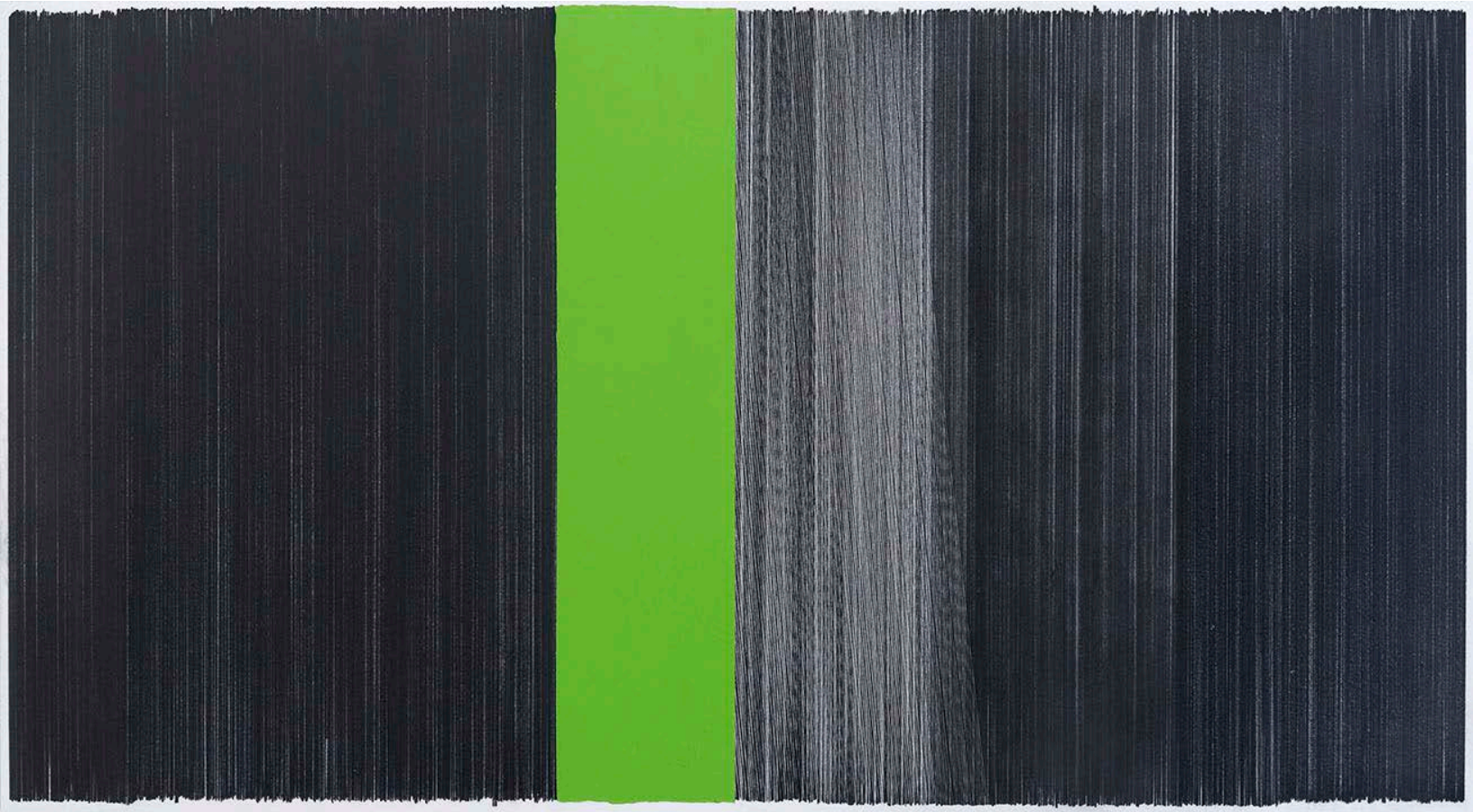
Anne Lindberg, *drawing black yellow*, 2014, graphite and acrylic on cotton mat board, 17 x 36 inches

CYNTHIA-REEVES



Anne Lindberg, *drawing black Payne's grey*, 2015, graphite and acrylic on cotton mat board, 18 x 51 inches

CYNTHIA-REEVES



Anne Lindberg, *drawing black green*, 2014, graphite and acrylic on cotton mat board, 20 x 44 inches

CYNTHIA - REEVES

ANNE LINDBERG

EDUCATION

- 1988 Master of Fine Arts, Cranbrook Academy of Art, Bloomfield Hills, MI
1985 Bachelor of Fine Arts, Miami University, Oxford, OH

CURRENT PROJECTS

- Intersection: Artists Master Line and Space, Akron Art Museum, Akron, OH - September 2016
In Tandem, solo exhibition, Haw Contemporary, Kansas City, MO - April - June 2016
Fold and Unfold, solo exhibition, Omi International Art Center, Ghent, NY - January - March 2016
Permanent collection acquisition of tilted sky, Springfield Art Museum, Springfield, MO - June 2016
installation
You People, Haw Contemporary, Kansas City, MO - Summer 2015
Factory Installed, The Mattress Factory, Pittsburgh, PA - May 2015 - March 2016
Drawn Below, solo exhibition, Carrie Secrist Gallery, Chicago, IL - Spring 2015
Ley Lines, University of Wyoming Art Museum, Laramie, WY - Jan - April 2015
Unmade: Anne Lindberg & Saskia Olde Wolbers, Contemporary Arts Center, Cincinnati, OH - October
2014 - March 2015
Sleepless Nights, curated by Abigail Solomon Godeau, Galerie Hubert Winter, Vienna Austria, part of
City-wide project The Century of the Bed from 2014 Curatedby_Vienna - Oct/Nov 2014 Landscape
Abstracted, Museum of Fine Art Boston - summer 2014
I have always been going North, solo exhibition, Carrie Secrist Gallery, Chicago - Feb/March 2014
Art in Embassies exhibition, US Department of State, Rangoon, Burma - Fall 2013 - 2015

SOLO EXHIBITIONS

- 2016 Omi International Art Center, fold and unfold, Ghent, NY
Haw Contemporary, in tandem, Kansas City, MO
2015 Carrie Secrist Gallery, drawn below, Chicago, IL
2014 Haw Contemporary, drawn together," Kansas City, MO
Carrie Secrist Gallery, I have always been going North, Chicago, IL
2013 Pentimenti Gallery, chroma, Philadelphia, PA
Dolphin Gallery, shift, Kansas City, MO
2012 Carrie Secrist Gallery, sustaining pedal, Chicago, IL
Nevada Museum of Art, modal lines, Reno, NV
2011 University of Central Missouri, Successu, Warrensburg, MO
2010 Cynthia Reeves Gallery, New York, NY
2006-07 Dolphin Gallery, parallels, Kansas City, MO
2005-06 Dennon Museum, bird / cloud, Traverse City, MI
2005 Sheldon Memorial Art Gallery, air / mass, University of Nebraska, Lincoln, NE
Belger Art Center, silences, Kansas City, MO
2000 Meadows Gallery, lineage, University of Texas at Tyler
1999 Dolphin Gallery, land / lines, Kansas City, MO
1995 Moreau Galleries, Saint Mary's College, Freckles, Notre Dame, IN
1990 Artemisia Gallery, Built of the Sky, Chicago, IL

CYNTHIA - REEVES

SELECT GROUP EXHIBITIONS

- 2016 Akron Art Museum, Intersections: Artists Master Line and Space, Akron, OH
- 2015 Haw Contemporary, You People, Kansas City, MO
The Mattress Factory, Factory Installed (shift lens), Pittsburgh, PA
University of Wyoming Art Museum, Ley Lines, Laramie, WY
- 2014 Contemporary Arts Center, Unmade: Anne Lindberg & Saskia Olde Wolbers, curated by Steven Matijico, Cincinnati, OH - October 10, 2014 - March 22, 2015
Galerie Hubert Winter, Sleepless Nights, curated by Abigail Solomon Godeau, Vienna Austria, part of city-wide project called The Century of the Bed, Curatedby_Vienna
Museum of Fine Arts Boston, Landscape Abstracted, curated by Al Miner, Boston, MA
Atlanta Contemporary Art Center, Coloring, Atlanta, GA 2013 Haw Contemporary, OPEN, Kansas City, MO
Carrie Secrist Gallery, New Work from Kansas City, Chicago, IL
US Embassy, Art in Embassies exhibition, Rangoon, Burma 2012 Masters & Pelavin Gallery, Silence, New York, NY
Bemis Center for Contemporary Arts, Placemakers, Omaha, NE
Nerman Museum of Contemporary Art, Abstract Kansas City, Overland Park, KS
- 2011 Tegnerforbundet, Oslo, Norway
SoFA Gallery at Indiana University, Bloomington, IN
Nerman Museum of Contemporary Art, Overland Park, KS
- 2010 H&R Block Artspace at the Kansas City Art Institute, Kansas City, MO
Fabrications, The Newport Mill, Newport, NH
Drawing Equivalents, Mark A. Chapman Gallery at Kansas State University, Manhattan, KA
Art through Architecture, Kansas City, MO
Federal Reserve Bank, Kansas City, MO
Missouri Bank Crossroads, Kansas City, MO
- 2009 The Drawing Center, "Apparently Invisible Selections Spring 2009," New York, NY
Zeitgeist Gallery, "I Thought Our Worlds Were the Same," Nashville, TN
Dolphin Gallery, "New Works," Kansas City, MO
- 2008 Concord Art Association, "Thoreau Reconsidered," Concord, MA
Dolphin Gallery, "On Liberty," Kansas City, MO
Dolphin Gallery, "Painting Removed for Art's Sake," Kansas City, MO
- 2008 Reading Art Museum, "Hot House," Reading, PA
LaEsquina / Urban Culture Project, "Locate/Navigate," Kansas City, MO
- 2007 Cranbrook Art Museum, "Hot House," Bloomfield Hills, MI
Dolphin Gallery, "June 2007 New Works," Kansas City, MO
Glyndor Gallery at Wave Hill, "Thoreau Reconsidered," Bronx, NY
Paragraph Gallery, "Systems: Working Drawings," Kansas City, MO
- 2006 Linda Ross Contemporary, "From The Ground Up," Clawson, MI
Kemper Museum of Contemporary Art, "Decelerate," Kansas City, MO
- 2005 Linda Ross Contemporary at Next Step Studio, "Black and White," Ferndale, MI
FALA, Tucson, AZ
Dolphin, Kansas City, MO
Urban Culture Project, "We Buy Art," Kansas City, MO
- 2003 Sybaris Gallery, "Going Forward," Royal, Oak, MI
Dolphin, Kansas City, MO
- 2002 Daum Museum of Contemporary Art, "Awakenings," Sedalia, MO
Sybaris Gallery, Royal Oak, MI
Snyderman - Works Gallery, Philadelphia, PA
Dolphin, "side by side," Kansas City, MO

CYNTHIA - REEVES

SELECT GROUP EXHIBITIONS (continued)

- 2001 Russell Hill Rogers Gallery at Southwest School of Arts, "Drawing the Thread," San Antonio, TX
Dolphin, "Summer Show," Kansas City, MO
Plaza Gallery, "Small Stone," Tokyo, Japan
- 2000 Avenue for the Arts, Kansas City, MO, outdoor installation at intersection of 11th Street and Central with
corresponding indoor exhibition at The Central Exchange
Synderman Gallery, "Pertaining to Line," Philadelphia, PA
- 1998 The Writer's Place, "en response," Kansas City, MO
Loft 122, "Charlotte Street 1998," Kansas City, MO
Network Gallery, "Clarity Of Seduction," Pontiac, MI
- 1997 Dolphin, "an approximate geography," Kansas City, MO
Kansas City Artists Coalition, "What's in the Air," Kansas City, MO
"The Levee," traveling print portfolio: Musee de Beaux Arts de Sherbrooke, Quebec; Kogeimura Paper
School Gallery in Inimachi, Japan and Spheris Gallery in Walpole, NH, Sam Francis Gallery in Santa
Monica, CA, Grinnell College Print & Drawing Study Room; Manhattan Graphics Center, New York, NY
- 1996 Delta College, "Pattern, Surface, Language," University Park, MI
el dorado, inc., "4Tangents," Kansas City, MO
Macalester College Art Gallery, "Cloth Reveries," St. Paul, MN
Dolphin, "4 Years, 35 Artists," Kansas City, MO
"The U.S. and Us," an invitational exhibition in New Zealand
- 1995 Armstrong Gallery, Cornell College, Mt. Vernon, IA
Katherine E. Nash Gallery, "Material Poetry," University of Minnesota, St. Paul, MN
Central Exchange, "Art From Academe," Kansas City, MO
Hatton Gallery, Colorado State University, "Extracts," Fort Collins, CO
- 1994 Gallery Muu and Senbikiya Gallery, "Inner Vision," Kyoto and Tokyo, Japan
Textile Arts Centre, "Survey, collaborative work by Anne Lindberg & Piper Shepard," Chicago, IL
Arrowmont School of Arts and Crafts, "Summer Faculty," Gatlinburg, TN
Palm Beach Community College Gallery, "Wall and Floor," Lake Worth, FL
- 1993 Watson, Ess, Marshall & Enggas, Kansas City, MO
Central Exchange, "Art From Academe: Into the Nineties," Kansas City, MO
Arrowmont School of Arts and Crafts, "Pattern: New Form, New Function," Gatlinburg, TN
- 1992 International Shibori Symposium, Nagoya Citizen's Gallery, "Contemporary Shibori Invitational, Nagoya, Japan
Carleton Art Gallery, Carleton College, "Unspoken Roots," Northfield, MN
Dolphin, "661/7,932 turn," collaborative installation with Piper Shepard, Kansas City
University of Iowa Hospitals and Clinics, Project Art, Iowa City, IA
Dolphin, "Portraits," Kansas City, MO
- 1991 Charlotte Crosby Kemper Gallery, Kansas City Art Institute, "KCAI Fellows," Kansas City, MO
Pittsburgh Center for the Arts, "International Fiberart '91," Pittsburgh, PA
Hancher Auditorium, University of Iowa, "Women Artists," Iowa City, IA
Minnesota Museum of Art, "Four Voices," St. Paul, MN
- 1990 Adams Art Gallery, "Fiber National '90," Dunkirk, N
Corvallis Art Center, "Paper Plus," Corvallis, OR
Littman Gallery, Oregon State University, Portland, OR
The Gallery at Craft Alliance, "Design in Sculptural Fiber," St. Louis, MO
Minnesota Gallery of the Institute, Minneapolis Institute of Arts, "The Other Foot in the Door,"
Minneapolis, MN
1989 Brooks Hall Gallery, North Carolina State University, "Constructed Form: Seven Views in
Fiber," Raleigh, NC, invitational
Katherine E. Nash Gallery, University of Minnesota, "Museum Workers Show," Minneapolis, MN
Aichi Prefecture Industry and Trade Hall, "Bridging Worlds with Shibori,"
Chubu Traditional Textile Craft Research and Study Association, Nagoya, Japan,
The Berkshire Museum, "Surface and Substance," Pittsfield, MA

CYNTHIA - REEVES

SELECT GROUP EXHIBITIONS (continued)

- 1990 Holter Museum of Art, "Paper/Fiber '89," Helena, MT
- 1988 Rockford Art Museum, "About Fiber," Rockford, IL
Cranbrook Academy of Art Museum, "Face-to-Face:Cranbrook/Mexico," Bloomfield Hills, MI
Yaw Gallery, Birmingham, MI
- 1987 Museo Franz Meyer, "Cranbrook/Ibero-Americano Fiber," Mexico City, Mexico
Cranbrook Academy of Art Museum, "A Collaboration:Cranbrook/Kashmir," Bloomfield Hills, MI

COMMISSIONS AND COLLECTIONS

American Century Investments
Animal Health & Safety Institute, Kansas State University, Innovation Campus
Daum Museum of Contemporary Art
DST Corporation
Detroit Institute of Art
Federal Reserve Bank of Kansas City
Fidelity Investments
H & R Block
Hewlett Packard
Howard & Cindy Rachofsky Collection
International Shibori Collection, Aichi Shibori Research & Study Archive, Nagoya, Japan Kemper Museum of Contemporary Art
Landmark Systems Corporation
Missouri Bank and Trust
Mitsubishi Corporation
Nerman Museum of Contemporary Art
Nevada Museum of Art
Niwako Kimono Company, Nagoya, Japan
Perpetual Mortgage
Reece & Nichols
Soil and Material Engineers
Spencer Museum at the University of Kansas
State of Iowa Art in Buildings Program Grant, University of Iowa Hospitals and Clinics Take Two TV
Sprint Corporation
numerous private collections nationwide

GRANTS

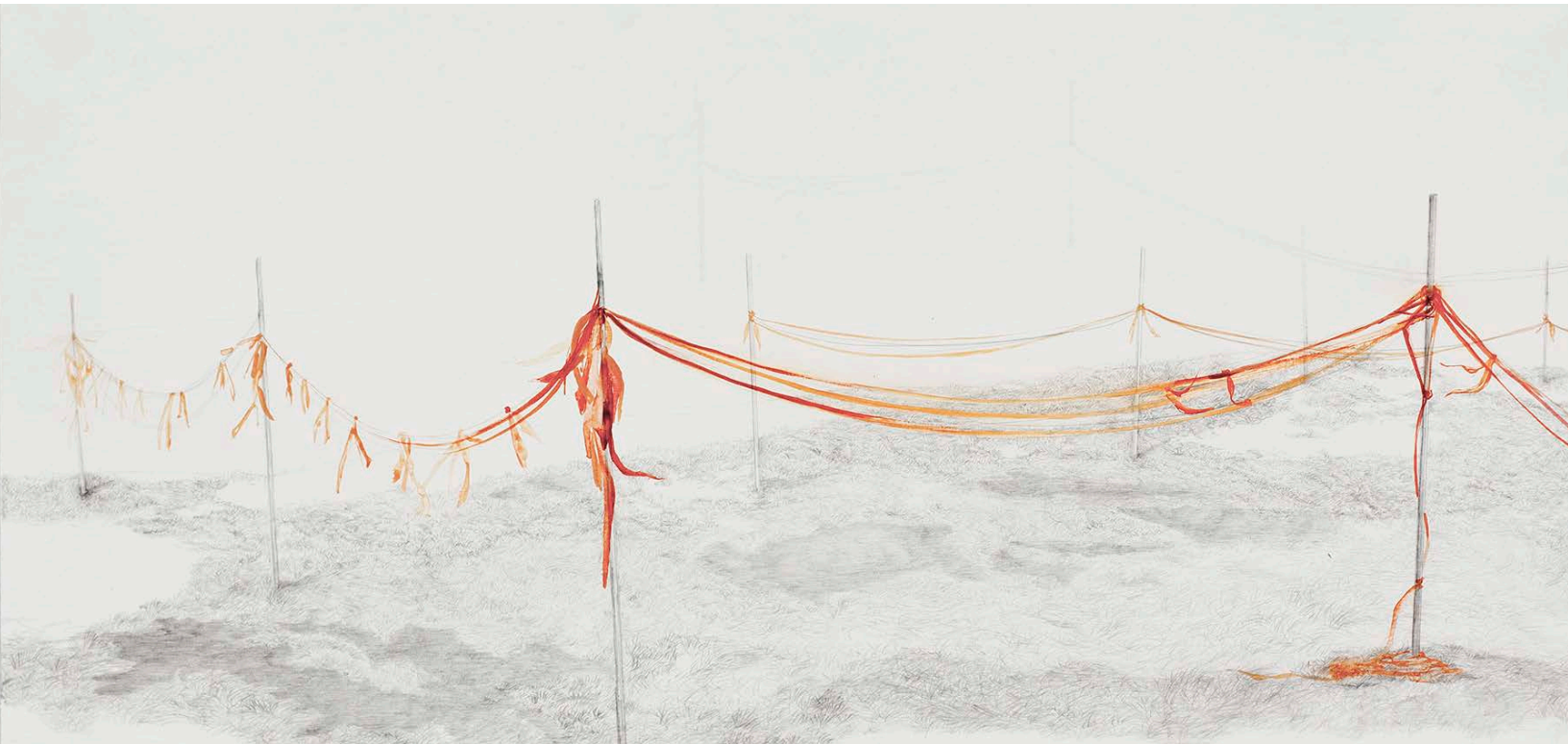
2011 Painters & Sculptors Joan Mitchell Foundation Grant
Lighton International Artist Exchange Grant - Fall 2011 (Norway)
ArtsKC Fund Inspiration Grant, 2009 (Art Omi International Artists Residency)
ArtsKC Fund Inspiration Grant, 2008 (custom drawing table)
Creative Capital Professional Development Workshop, 2007
Charlotte Street recipient, anonymous grant to individual artists, Kansas City, MO, 1998
Mid-America Arts Alliance/National Endowment for the Arts Fellowship, 1993-94

SHONA MACDONALD



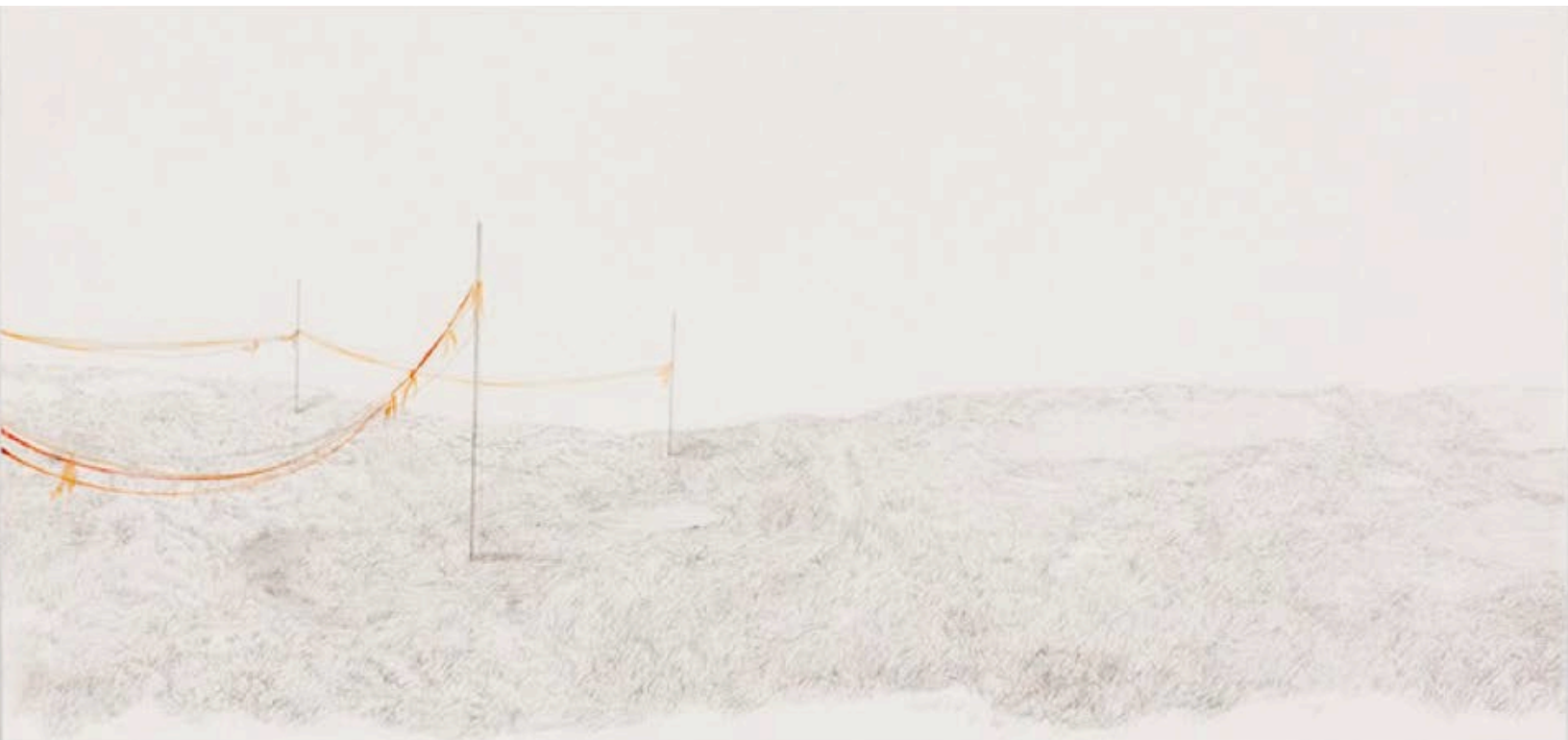
Shona Macdonald's work is concerned with identifying then re-presenting observations of places: she regards the everyday, the prosaic, and reiterates that for the viewer, insisting on a decidedly different point of view. These silverpoint drawings, often devoid of color, enable the viewer to distill and hone the imagery, while the swathes of negative space define a certain psychological tension in her compositions.

CYNTHIA-REEVES



Shona Macdonald, *Orange Interference #1*, 2016, silverpoint and gouache on absorbant ground on paper, 11 x 24

CYNTHIA-REEVES



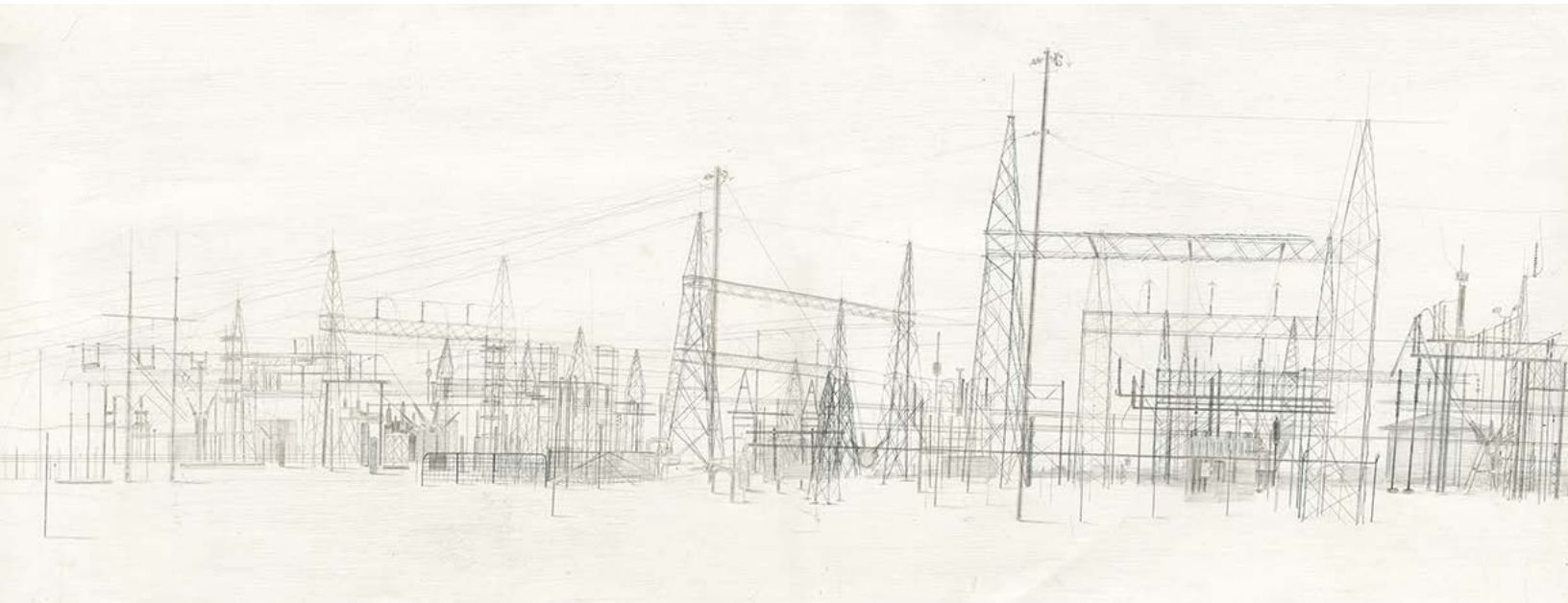
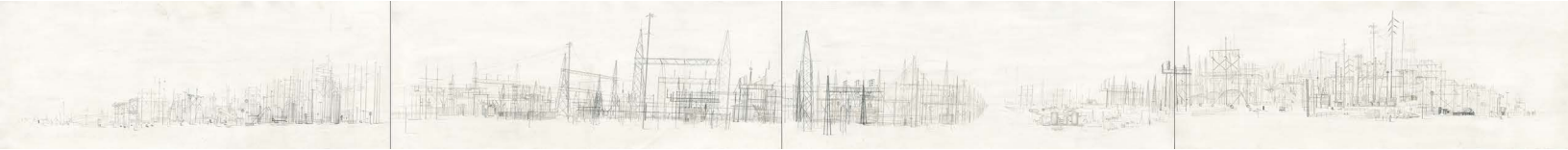
Shona Macdonald, *Orange Interference #2*, 2016, silverpoint and gouache on absorbant ground on paper, 11 x 24

CYNTHIA-REEVES



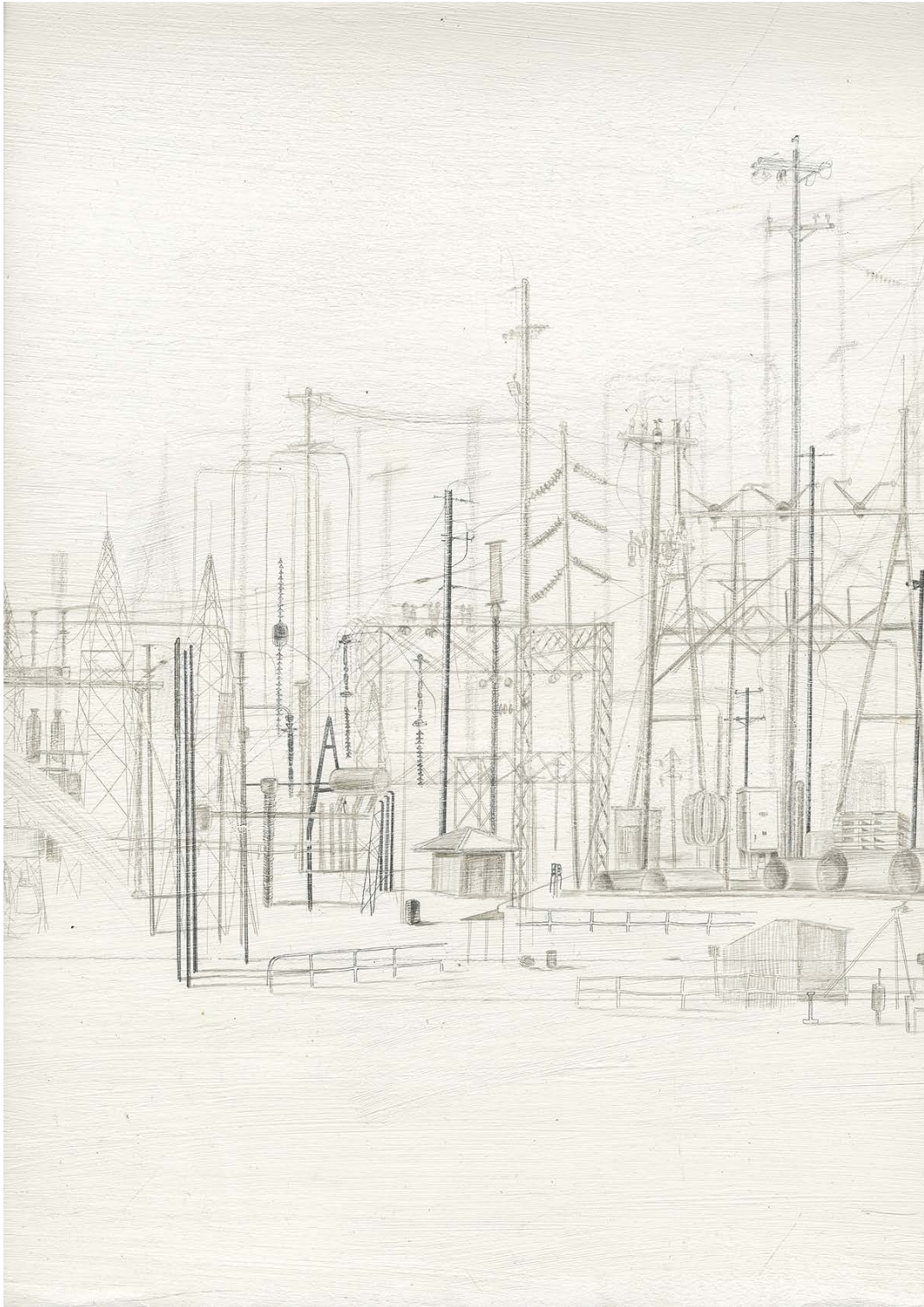
Shona Macdonald, *Ghosts Large #1*, 2016, silverpoint on absorbant ground on paper, 19 x 28.5 inches

CYNTHIA-REEVES



Shona Macdonald, *Around Drive By*, 2012, silverpoint on absorbant ground on paper, 18 x 184 inches

CYNTHIA-REEVES



Shona Macdonald, *Around Drive By*, detail

CYNTHIA-REEVES

SHONA MACDONALD

BORN

Aberdeen, Scotland

Lives and works in Western Massachusetts

EDUCATION

1996 M.F.A. Degree, Studio Art, University of Illinois at Chicago, IL

1991 B.F.A. Honours Degree, Painting, Glasgow School of Art, Scotland

TEACHING

2006-Pres Professor of Art, University of Massachusetts Amherst, (tenured 2009)

1998-06 Associate Professor of Art, Illinois State University, (tenured 2006)

SELECT SOLO EXHIBITIONS

2017 Sky on Ground, NYPOP Gallery, New York, NY

2015 Shona Macdonald: Ground Covering, Tarble Arts Center, Eastern Illinois University, Charleston, IL
Uncanny Valley, CYNTHIA-REEVES, MASS MoCA campus, North Adams, MA

2014 Waving Frontal System: Shona Macdonald, Grid Space, Brooklyn, NY

2013 Weather in Winter, Window, Asheville, NC

2012 Place-to-Place, Ebersmoore, Chicago, IL

Very Large Array, Herter Gallery, University of Massachusetts, Amherst, MA

2011 Sea-Change, University Galleries, Illinois State University, Bloomington, IL

Shona Macdonald: Works, 2003-2006, CYNTHIA-REEVES New England, Hanover, NH
Around, Roswell Museum and Art Center, Roswell, NM

2010 Shona Macdonald, St. Gaudens Picture Gallery, Cornish, NH

Shona Macdonald, Engine Room, Massey University, Wellington, New Zealand

2009 Two Northeast, Proof Gallery, Boston, MA

Shift: Drawings, University Art Center, College of St. Benedict, St. Joseph, MN

2008 Shona Macdonald, Reeves Contemporary, New York, NY

2007 Shift, Den Contemporary, LA, CA

2005 Shona Macdonald: Inscape, Gahlberg Gallery, College of DuPage, Glen Ellyn, IL

Shona Macdonald :Inscape Drawings, Chicago Cultural Center, Chicago IL

Shona Macdonald: Inscape: Paintings, Skestos-Gabriele Gallery, Chicago, IL

2003 Terrain, Julie Baker Fine Art, Grass Valley, CA

2000 Shona Macdonald, Project Room, Fassbender Gallery, Chicago, IL

1998 Shona Macdonald, New Work, Fassbender Gallery, Chicago, IL

SELECT TWO PERSON EXHIBITIONS

2012 Striations and Structure, Lynden Sculpture Garden, Milwaukee, WI

2002 Shona Macdonald: Envelopes and Isles, Galerie refugium, Berlin, Germany

Shona Macdonald & Molly Briggs, Works on Paper, Riverside Arts Center, Riverside, IL

Shona Macdonald & LJ Douglas, University of Alberta Art Gallery, Edmonton, Alberta, Canada

Confluence, Julie Baker Gallery, Sacramento, CA, (showed with Ray Charles White)

CYNTHIA-REEVES

SELECT GROUP EXHIBITIONS

- 2017 Uneath, Painting Center, New York, NY
A Certain Slant of Light, Riverside Arts Center, IL travelling to Normandale Community College, Bloomington, MN
Roswell Museum and Art Center, Roswell, NM
- 2016 From Atmosphere to Edge, Kingston Gallery, Boston, MA
Impending Future, Lycoming College, Williamsport, PA
Between Two Points, Scene Metrospace Gallery, Michigan State University, East Lansing, MI
Metalpoint and Graphite, The Barn, Walpole, NH
Group Exhibition, The Center for Contemporary Art, Bedminster, NJ Drawing Never Dies, Redline, Denver, CO
Artist as Maker, Thinker, Feeler, Cade Center for Fine Arts, Anne Arundel Community College, Arnold, MD
Watering Holes, Maryland Federation of Art, Anapolis, MD (online) Reflections, Linus Gallery, Pasadena, CA (online)
NEXT up, NEXT Gallery, Denver, CO
Painting and Seeing, University of North Carolina, Wilmington, NC Where we are Going, Where we have Been,
MINT, Atlanta, GA 53rd Annual, Masur Museum of Art, Monroeville, LA
- 2015 Land Ho!, Fitchburg Art Museum, Fitchburg, MA, curated by Mary M. Tinti, Associate Curator, and Emily M.
Mazzola, Koch Curatorial Fellow (catalog)
- 2014 The Lure of the Sea, Phoenix Gallery, Brighton, England, UK
- 2013 Second Nature, Rosemary Duffy Larson Gallery, Broward College, Davie, FL
System Preferences, SCA Contemporary, Albuquerque, NM
- 2012 TX Contemporary, CYNTHIA-REEVES, Houston, TX
- 2011 Perceptions of Promise, Glenbow Art Museum, Calgary, AB, Canada, (catalog) –
Traveling to McMaster Museum of Art, Hamilton, ON, Canada
Place, SUNY Dutchess, Kingston, NY
West, Wester, Westest, FFDC Gallery, San Francisco, CA
- 2010 Ah, Wilderness!, Ebersmoore, Chicago, IL
Scape, Nicole Villeneuve, Chicago, IL
Art Miami, CYNTHIA-REEVES, Miami, FL
- 2009 New Digs, Den Contemporary Art at Pacific Design Center, Los Angeles, CA
Illinois, McLean County Arts Center, Bloomington, IL
The Lustre of Silver, Evansville Museum & Art Gallery, Evansville, IN (catalog)
- 2008 Here, There, Everywhere, Chicago Cultural Center, Chicago, IL
Marks on Paper, Pharmaka, Los Angeles, CA
Benefit Exhibition, Evanston Art Center, Evanston, IL
50th Anniversary of the Department of Studio Arts Faculty Exhibition, Herter Gallery, University of Massachusetts,
Amherst, MA
- 2007 The Uncertainty Principle: Drawing in the Golden Age of Worry, Northern Illinois University Art Gallery, DeKalb, IL
Topamnesia, Skestos-Gabriele Gallery, Chicago IL
- 2006 Paper, Skestos-Gabriele Gallery, Chicago, IL
The Lustre of Silver: Contemporary Silverpoint Drawings, Telfair Art Museum, Savannah, GA
- 2005 Into the Woods, Thomas McCormick Gallery, Chicago IL
Invisible Worlds, Evanston Art Centre, Evanston, IL
Groundwork, d.e.n. contemporary, LA, CA
Drawing Project, Stray Show, Chicago, IL
Drawn Out, Gallery 400, Chicago, IL
Into the Midst, Mixture Contemporary, Houston, TX

CYNTHIA - REEVES

SELECT GROUP EXHIBITIONS

- 2005 The Promised Land, Wendy Cooper Gallery, Chicago IL
- 2004 Den Nya Framtidsvetenskapen, Lisa Boyle Gallery, Chicago IL
Summer Drawings and Some are Not, Mixture Gallery, Houston TX
Drawing Project: Chicago/London, The Stray Show, Chicago IL
Displacement, Gescheidde, Chicago, IL, (Brochure, essay John Brunetti)
Under Run, Dogmatic, Chicago IL
Lazy Days, Julie Baker Fine Art, Grass Valley, CA
- 2003 PAINTINGS!, Central Michigan University Art Gallery, Mt. Pleasant, MI, (catalog)
So Square, McLean County Art Centre, Bloomington, IL
Faculty Biennial, Illinois State University, Normal, IL
Travelogue, Green Studios, Mineral Point, WI
- 2002 Topography, Northeastern Illinois University Art Gallery, Chicago, IL
Postcards from the Edge, MacLean County Art Centre, Bloomington, IL
- 2001 Faculty Biennial, University Galleries, Illinois State University, Bloomington, IL
Bakers Dozen, Julie Baker Gallery, Grass Valley, California
By the Foot, NIU Gallery, Chicago, IL
Summer Group Show, Fassbender Gallery, Chicago, IL
- 2000 Surface Tensions, Spaces, Cleveland, Ohio
Intonations, ARC Gallery, Chicago, IL, (brochure, John Brunetti)
Brief Encounters, British Artists Abroad, (BAB), Platform, Melbourne, Australia
Thin Line, I-Space, Chicago, (essay, Tim Porges)
Recycle, McLean County Art Center, Bloomington, IL
The Mark Applied, Cardinal Stritch University Gallery, Milwaukee, WI
Snapshot, Contemporary Museum, Baltimore, MD, (CD-Rom Catalogue)
- 1999 Thirty times 15" x 15", Fassbender, Gallery, Chicago, IL
Faculty Biennial, University Galleries, Illinois State University, Bloomington, IL
Emergence, The Three Arts Club, Chicago, IL, (essay, Stephanie Skestos)
It Looks Easy: A Cross-Section of Painting in Chicago, Gallery 400, Chicago, IL
Otherville, University Gallery, Illinois State University, Bloomington, IL
- 1998 Link: 22 Painters, Jan Cicero Gallery, Chicago, IL
Substance: A Corporeal Investigation, NIU Gallery, Chicago, IL, (essay, Julie Charmello)
- 1997 The Twenty Five Dollar Show, Beret Gallery, Chicago, IL
Works on Paper, Riverside Arts Centre, Riverside, IL
- 1996 (over) The Fourth Floor, 118 North Peoria, Chicago, IL
Mid-States Annual, Evansville Museum of Art, Evansville, IN
Summer Group Show, Fassbender Gallery, Chicago, IL
Shona Macdonald/Karen Ruby Brown, Gallery 400, Chicago, IL
- 1995 South Central, Link Gallery, University of Illinois, Champaign, IL
- 1993 16th Annual Purchase Award Show, Southern Illinois University, Carbondale, IL Risk,
Vergette Gallery, Southern Illinois University, Carbondale, IL
- 1992 Pacesetters, Peterborough Art Gallery, Peterborough, England, UK
- 1990 Scholarship Exhibition, Hospitalfield Residency, Hospitalfield House, Arbroath, Scotland, UK
- 1988 Paisley Drawing Competition, Paisley Museum and Art Gallery, Paisley, Scotland, UK

CYNTHIA - REEVES

AWARDS

- 2016 Peripheral Visions Publication Fellow
- 2014 Marion and Jasper Whiting Foundation Award (to Scotland)
Berkshire Taconic Individual Artist Grant
- 2013 Interdisciplinary Studies Institute Fellowship, Emancipation
Flex Grant, University of Massachusetts Amherst, Center for Teaching
Research Grant, University of Massachusetts Amherst College of Humanities and Fine Arts Research Grant
- 2012 University of Massachusetts Faculty Convocation Awardee for Outstanding Research and Creative Activity
Flex Grant, University of Massachusetts Amherst, Center for Teaching
Research Grant, University of Massachusetts Amherst
College of Humanities and Fine Arts Research Grant, University of Massachusetts Amherst
- 2010 Exceptional Merit Award, University of Massachusetts, Amherst
Sabbatical Enhancement Grant, University of Massachusetts, Amherst TSRF Grant, College of Humanities and
Fine Arts, University of Massachusetts, Amherst
Digital Humanities Grant, College of Humanities and Fine Arts, University of Massachusetts, Amherst
Open Education Initiative Grant, College of Humanities and Fine Arts, University of Massachusetts, Amherst
- 2009 Pollock Krasner Foundation Award
Research Intensive Semester Award, College of Humanities and Fine Arts, University of Massachusetts Amherst,
(Semester free of teaching)
Interdisciplinary Seminar in Humanities and Fine Arts Fellowship, New Human Disciplines, University of
Massachusetts Amherst, (\$500)
Visioning Grant, College of Humanities and Fine Arts, University of Massachusetts, Amherst (to establish a Visiting
Artist's Program)
- 2008-9 Healey Faculty Research Award, University of Massachusetts Amherst (also 2006-7)
Melon Mutual Mentoring Award, University of Massachusetts Amherst
- 2005 Illinois Arts Council Finalist Award
- 2002-5 Illinois State University Faculty Large Project Grant, Bloomington, IL
- 2001 Nominated, Louis Comfort Tiffany Award
Illinois State University Faculty Large Project Grant, Bloomington, IL
- 2000 CAAP Grant, City of Chicago, Department of Cultural Affairs.
- 1999 Illinois State University Faculty Small Project Grant, Bloomington, IL
- 1997 Drawing Prize, Riverside Arts Centre, Chicago, Illinois
- 1996 Jess Halpert Memorial Award, Evansville Museum, Indiana
- 1995 R.S. Richard Foundation Award, Ayrshire, Scotland
Aberdeen Endowments Trust, Aberdeen, Scotland
- 1993 Purchase Award, Southern Illinois University, Carbondale, Illinois
- 1992 Scottish International Educational Trust Scholarship, Scottish Arts Council, Edinburgh, Scotland
- 1990 Hart Bursary Award, Glasgow School of Art

ARTIST RESIDENCIES

- 2018 (upcoming) Ballinglen, Co. Mayo, Ireland
- 2014 Cromatry Arts Trust, Black Isle, Scotland
- 2012 Can Serrat, Fellowship /Residency, El Bruc, Barcelona, Spain
- 2010-11 Roswell Artist-in-Residence, Fellowship/Residency, Roswell, NM
- 2004 Tyrone Guthrie Centre, Residency, County Monaghan, Ireland
- 2001 Virginia Center for the Creative Arts, Artists Residency, Sweet Briar, VA
Ragdale Foundation, Artist Residency, Lake Forest, IL
- 1990 Hospitalfield Scholarship and Residency, Hospitalfield House, Arbroath, Scotland, UK

CYNTHIA-REEVES



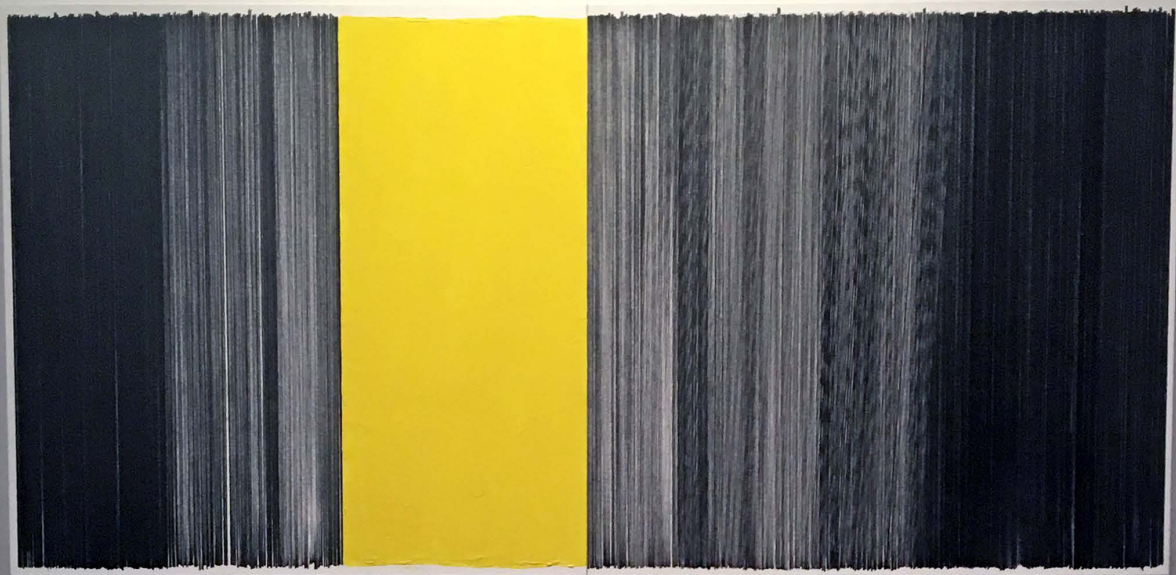
CYNTHIA-REEVES



CYNTHIA-REEVES



CYNTHIA-REEVES



CYNTHIA-REEVES

