



LIVESTREAMED VIRTUAL CONERENCE

# 24th annual **PRIMARY CARE** UPDATE

A clinical update on the management of the adult patient



## KEYNOTE SPEAKER

**R. Brent Wright, M.D., MMM, FAAFP**

Associate Dean for Rural Health Innovation  
University of Louisville School of Medicine  
Professor & Vice Chair for Rural Health  
Department of Family & Geriatric Medicine

Immediate Past President, Kentucky Medical Association  
Past President and Advocacy Chair, Kentucky Academy of Family  
Physicians Board Chair, Foundation for a Healthy Kentucky

**Friday, Nov. 20, 2020**

**7:50 a.m. to 3:15 p.m. EST**

Provided by



**NORTON**  
HEALTHCARE

# 24th annual **PRIMARY CARE UPDATE**

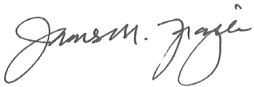
Dear Colleague:

It is our privilege to invite you to participate in the 24th annual Primary Care Update. Our Planning Committee has selected a variety of topics to meet the educational needs and practice challenges expressed by you and your peers in Kentucky and Southern Indiana. This program demonstrates our collective dedication to excellence in lifelong learning and the ongoing pursuit of providing the highest-quality health care. We appreciate your continued support and shared commitment to strive for excellence and best practices of the physician's art, setting the standard for quality and caring.



**Steven T. Hester, M.D., MBA**

*Division President, Provider Operations  
System Chief Medical Officer  
Norton Healthcare*



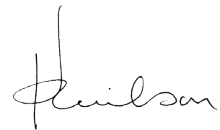
**James M. Frazier, M.D.**

*Course Co-director  
Vice President, Medical Affairs and Quality  
Norton Healthcare*



**W. Paul McKinney, M.D.**

*Course Co-director  
Professor and Associate Dean for Research  
University of Louisville School of Public Health and  
Information Sciences*



**Kenneth C. Wilson, M.D.**

*Course Co-director  
System Vice President, Quality and Clinical Effectiveness  
Norton Healthcare*

## Guest faculty



**R. Brent Wright, M.D., MMM, FAFP**

*Associate Dean for Rural Health Innovation  
University of Louisville School of Medicine  
Professor & Vice Chair for Rural Health  
Department of Family & Geriatric Medicine*

*Immediate Past President, Kentucky Medical Association  
Past President and Advocacy Chair, Kentucky Academy of Family  
Physicians Board Chair, Foundation for a Healthy Kentucky*

R. Brent Wright, M.D., MMM, FAFP, is the immediate past president of the Kentucky Medical Association and the current board chair of the Foundation for a Healthy Kentucky. Leadership and service have driven Dr. Wright's work as he has served as president of the Kentucky Rural Health Association, president of the Kentucky Academy of Family Physicians and a board member for Leadership Kentucky. In his professional role of vice chair for rural health, Dr. Wright has helped to educate over 80 board-certified family physicians within the University of Louisville/Glasgow Family Medicine Residency. In his role as associate dean for rural health innovation, Dr. Wright has used his collaboration skills to assist with advancement of federal grant funding targeted toward needs of the aging population within the commonwealth and investigating smart-glass technology in multiple care settings. This current research was spurred through necessity during the COVID-19 pandemic. In July 2020, UofL/Owensboro Family Medicine Residency started their first residency class, which was a culmination of a multiyear effort by Dr. Wright with the University of Louisville School of Medicine and Owensboro Health.

# 24th annual **PRIMARY CARE UPDATE**

## **Robert H. Couch, M.D. Memorial Lectureship**

---

This year's conference features the first presentation of a lectureship created in memory of long-time emergency medicine physician Robert H. Couch, M.D. Dr. Couch's achievements are numerous: He was recognized for his contributions to medicine in the Louisville community when he was honored with the Lifetime Hero award by Louisville Business First; he was a founding member of Southern Emergency Medical Specialists; he served in numerous roles with the Greater Louisville Medical Society and Kentucky Medical Association (KMA), and was elected incoming KMA president before his death in November 2019.

Dr. Couch was a servant leader who wanted to make a large impact on our community and the world. In this vein, he is most notably remembered for his dedication to serving those in our community who are addicted to opioids. He was the first physician in Louisville to sound the alarm on the opioid crisis when he treated nine overdoses within hours of starting a 12-hour shift at Norton Hospital's emergency department. In the following days, weeks and months, he continued to educate the community through local and national media interviews, as well as by speaking to civic groups and local community leaders on the dangers of opioids. His particular passion for opioid and addiction education and awareness led him to travel the country, advocating for patients and speaking to various groups and lawmakers about the issue.

This lecture is named in Dr. Couch's honor and memory and serves to inspire others to advocate on behalf of patients as he did.

## **Target audience, goal and statement of need**

---

The goal of this activity is to bring together physicians, physician assistants, nurse practitioners, nurses, residents, students and other interested internal medicine and family medicine health care professionals to enhance competence, performance and patients' outcomes. Topics have been determined based on gaps in education identified by attendees on previous years' evaluations, current practice issues highlighting newly available medicine or new technologies, or gaps determined by our Planning Committee to be highly salient to today's practice challenges. Further, needs have been correlated with maintenance of certification requirements and competency areas outlined by the American Board of Medical Specialties and Accreditation Council for Graduate Medical Education.

This program will provide clinical updates on a variety of topics that are commonly seen in the treatment of adult patients in the primary care setting. In addition to updating attendees on clinical guidelines and best practices, attendees will learn best practices for commonly seen diagnoses to create evidence-based strategies to improve patient care. Topics will include the state of health in Kentucky, vaping, ophthalmology, fatty liver disease, chronic kidney

disease, rheumatologic testing, treating substance use disorders, dermatology, atrial fibrillation, and infectious diseases to include the latest COVID-19 updates.

## **Disclosure policy**

---

Norton Healthcare adheres to the Kentucky Medical Association accreditation requirements and policies and Kentucky Board of Nursing Essential Areas and Policies, including the Standards for Commercial Support, regarding industry support of continuing education. During the planning process, all individuals in a position to control the content of this educational activity (course directors, planners, presenters and authors) must disclose all relevant financial relationships they have with ACCME-defined commercial interests as well as the nature of the relationship that may be a potential conflict of interest. These are assessed by the Norton Healthcare Center for Continuing Medical Education to ensure adequate resolution of any identified conflicts prior to the activity. Disclosure of faculty and commercial relationships, as well as the discussion of unlabeled or unapproved use of any drug, device or procedure by the faculty, will be disclosed at the activity. Further, all physician attendees will be asked to evaluate all speakers' content for bias and balance at the symposium.

All speakers and planners agree to uphold academic standards to ensure balance, independence, objectivity and scientific rigor in their various roles as planners or faculty, providing balanced evidence-based views of therapeutic options, using only generic names when discussing therapeutic options. All speakers and planners will disclose prior to the activity if applications are off-label or investigational. All presentations will be HIPAA-compliant.

## **Special thanks to the Planning Committee**

---

**Karen Busse, M.S., CCMEC** (director, Norton Healthcare Center for Continuing Medical Education)

**Kathleen Exline, R.N., MSN** (system vice president, Performance Excellence and Care Continuum, Norton Healthcare)

**James M. Frazier, M.D.** (vice president, Medical Affairs and Quality, Norton Healthcare)

**Emily Garrison, MHA, CCMEC** (senior coordinator, Norton Healthcare Center for Continuing Medical Education)

**James T. Jennings, M.D.** (medical director, Norton Medical Group – Adult Primary Care)

**W. Paul McKinney, M.D.** (professor and associate dean for research, University of Louisville)

**Sandra Stroud, B.A., CCMEC** (senior coordinator, Norton Healthcare Center for Continuing Medical Education)

**Sally Sturgeon, DNP, R.N., SANE-A, AFN-BC** (clinical educator, Norton Healthcare Institute for Nursing)

**Kenneth C. Wilson, M.D.** (system vice president, Quality and Clinical Effectiveness, Norton Healthcare)



# 24th annual PRIMARY CARE UPDATE

## Local faculty



**Scott G. Bickel, M.D.**  
*Pediatric Pulmonologist*  
Assistant Professor, Pediatrics  
Norton Children's Pulmonology  
Affiliated with the UofL School of Medicine



**Kelly C. Cooper, M.D., MPH**  
*Medical Director, Addiction Services*  
Norton Behavioral Medicine



**Brennan Greene, M.D.**  
*Ophthalmologist*  
The Eye Care Institute



**Stanley A. Lee, M.D.**  
*Pediatric Pulmonology Fellow*  
University of Louisville School of Medicine



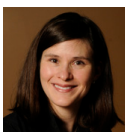
**Charles F. Moore Jr., M.D.**  
*Rheumatologist*  
Norton Rheumatology Specialists



**Kent E. Morris, M.D.**  
*Cardiologist and Electrophysiologist*  
Norton Heart & Vascular Institute



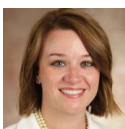
**Ramsey N. Nassar, M.D.**  
*Nephrologist*  
Nephrology Associates of Kentuckiana PSC



**Courtney R. Schadt, M.D., FAAD**  
*Chief of Dermatology*  
Robley Rex Veterans Administration Medical Center  
*Associate Professor*  
Department of Medicine, Division of Dermatology  
University of Louisville School of Medicine



**Paul S. Schulz, M.D.**  
*Infectious Diseases Specialist*  
Norton Infectious Disease Specialists



**Alison S. Sharpe, D.O.**  
*Gastroenterologist*  
Norton Gastroenterology Consultants of Louisville

## Continuing education

### Physicians

#### American Medical Association credits

**Accreditation:** Norton Healthcare is accredited by the Kentucky Medical Association to provide continuing medical education for physicians.



**Designation:** Norton Healthcare designates this live activity for a maximum of 6.0 *AMA PRA Category 1 Credits™*. Physicians should claim only the credit commensurate with the extent of their participation in the activity.

#### House Bill 1 credits

The 24th annual Primary Care Update has been approved for 0.75 HB1 credit hours by the Kentucky Board of Medical Licensure. ID #0920-H.75-NHC8b

#### American Academy of Family Physicians credits

The AAFP has reviewed the 24th Annual Primary Care Update and deemed it acceptable for up to 6.00 Online Only, Live AAFP Prescribed credit. Term of Approval is from 11/20/2020 to 11/20/2020. Physicians should claim only the credit commensurate with the extent of their participation in the activity.

#### American Board of Internal Medicine credits

Participants who successfully complete this CME activity, including the evaluation component, may earn up to 6.0 MOC points in the American Board of Internal Medicine's (ABIM) Maintenance of Certification (MOC) program. Participants will earn MOC points equivalent to the amount of CME credits claimed for the activity. The CME activity provider is responsible for submitting participant completion information to the Accreditation Council for Continuing Medical Education for the purpose of granting ABIM MOC credits.



For questions related to CME, contact the Norton Healthcare Center for Continuing Medical Education at **(502) 446-5955** or **cme@nortonhealthcare.org**.

### Nurses

Kentucky Board of Nursing (KBN) Approved Provider: Norton Healthcare, provider number 4-0002-12-20-243. The program has been approved by Norton Healthcare for 7.2 contact hours which expires 12/31/2020. KBN approval of a continuing education provider does not constitute endorsement of program content. Nursing participants must attest to the number of hours of attendance and complete the evaluation to receive contact hours. For more information related to nursing credits, contact Sally Sturgeon, DNP, R.N., SANE-A, AFN-BC, at **(502) 446-5889** or **sally.sturgeon@nortonhealthcare.org**.

# 24th annual **PRIMARY CARE UPDATE**

## Agenda

---

7:30 a.m.	<b>Virtual room opens</b>
7:50 a.m.	<b>Welcome, opening remarks</b>
8 a.m.	<b>Keynote Presentation</b> <i>The State of Health in Kentucky</i> R. Brent Wright, M.D., MMM, FAAFP
8:55 a.m.	<b>Break</b>
9:05 a.m.	<b>Latest Update on Vaping</b> Scott G. Bickel, M.D.; Stanley A. Lee, M.D.
9:35 a.m.	<b>Common Eye Complaints and Eye Emergencies</b> Brennan Greene, M.D.
10:05 a.m.	<b>Break</b>
10:15 a.m.	<b>Updates and Management of Nonalcoholic Fatty Liver Disease</b> Alison S. Sharpe, D.O.
10:45 a.m.	<b>Chronic Kidney Disease Management and Staging</b> Ramsey Nassar, M.D.
11:15 a.m.	<b>Rheumatologic Testing for the Non-rheumatologist</b> Charles F. Moore Jr., M.D.
11:45 p.m.	<b>Lunch break</b>
12:30 p.m.	<b>Robert H. Couch, M.D. Memorial Lecture</b> <i>Myths and Realities of Medication-assisted Treatment</i> Kelly C. Cooper, M.D., MPH
1:15 p.m.	<b>Skin Manifestation of Systemic Diseases</b> Courtney R. Schadt, M.D., FAAD
1:45 p.m.	<b>Break</b>
1:55 p.m.	<b>Cardiology: Atrial Fibrillation</b> Kent E. Morris, M.D.
2:25 p.m.	<b>Hot Topics in Infectious Diseases: COVID-19 Update</b> Paul S. Schulz, M.D.
3:15 p.m.	<b>Adjournment</b>

## Course materials

---

Presentation slides and symposium information will be available at **NortonCME.com**. Select the "Conference Details/Presentation" option and then this activity. The Zoom participation links will not be posted to this website. They will be emailed to you after you register.

## Course format

---

This symposium will be livestreamed via Zoom. There will be no in-person attendees. Connection instructions for the sessions will be shared by email a few days before the symposium. This online format will allow participants to submit questions for the presenters via online chat within Zoom throughout each presentation. Attendees can join sessions as their schedule allows and claim partial credit if applicable.

## Registration

---

Registration is available for the Zoom livestream only. There is no registration fee to participate in this livestreamed symposium. Registration is required in order to receive the Zoom participation links and continuing education credits. Space is limited and early registration is recommended.

Final registration deadline: **Wednesday, Nov. 18, 2020**

Three convenient ways to register:

1. Visit **NortonCME.com** and locate the activity by date.
2. Scan the **QR code**:
3. Call **(502) 629-1234**, option 4.

