



**bizhub PRESS** 

**PRESS C1070/C1070P/C1060**

**PRO C1060L**

## **Product Reference Guide**

**DRAFT**

**BT-Production Print Product Planning Division**

**Draft Version 0.1**

**Dated 22 April 2010**

**This document contains highly confidential information of KM!**

**KM Group internal use only!**



## Table of Contents

- 1 Product overview ..... 4
  - 1-1 Product concept ..... 4
  - 1-2 Aim of the product ..... 4
  - 1-3 Product naming ..... 4
  - 1-4 Target customer/ and application ..... 4
    - 1) Target market ..... 5
    - 2) Target application ..... 5
  - 1-5 Competitive positioning ..... 5
  - 1-6 Key features ..... 7
- 2 Detail information of each features and functionality ..... 8
  - 2-1 Image quality ..... 8
    - 1) 4<sup>th</sup> Generation SimitriHD<sup>E</sup> toner ..... 8
    - 2) Refined OPC Drum ..... 8
    - 3) Evolved “S.E.A.D” IV technology ..... 9
    - 4) Refined image processing algorithm for scan ..... 12
  - 2-2 Media handling ..... 13
    - 1) Newly developed “Suction” Feeder (PF707) ..... 13
    - 2) “Air-assisted” paper feeder “PF602m/LU202” ..... 13
    - 3) Envelope printing support with dedicated fuser option ..... 14
    - 4) Thick paper capability for single/double sided output up to 300gsm ..... 14
  - 2-3 Productivity ..... 14
    - 1) Refined “roll to belt” fuser unit ..... 14
    - 2) Rated speed up to 176gsm coated paper ..... 15
    - 3) Optimized magnification control of Auto Duplex ..... 16
    - 4) High-speed sheet through type ADF(DF626) ..... 16
  - 2-4 Stability/Consistency ..... 17
    - 1) Enhanced color output feedback system ..... 17
    - 2) Largely refined transfer process ..... 18
    - 3) Refined real time auto internal color adjustment ..... 18
  - 2-5 Reliability ..... 19
    - 1) Newly developed Registration shift mechanism ..... 19
    - 2) Fuser shift mechanism ..... 20
    - 3) Auto Refining developing system ..... 20
    - 5) Air blow paper de-touching system for Fuser ..... 21
    - 6) Revised relay unit (RU509) ..... 21
    - 7) Improved de-curling adjustment ..... 22
    - 8) Cyclone-type air suction system ..... 22
    - 9) Instruction page for thin paper usage ..... 22
  - 2-6 Durability ..... 23
    - 1) Brand-new long-life platform ..... 23
    - 2) Longer lasting key parts and consumables ..... 23
    - 3) Metal made paper tray ..... 23
  - 2-7 Ease of use ..... 24
    - 1) HTML users guide **\*Available at MR 2.0** ..... 24
    - 2) User’s guide on the operation panel **\*Available at MR 2.0** ..... 24
    - 2) “Real time” Remote panel II **\* Available at MR 2.0 only for C1070/P** ..... 24



- 3) Front access of toner bottle and waste toner box exchange ..... 25
- 4) PC like operation with mouse ..... 25
- 5) Paper catalogue function enhancement **\*Available at MR 2.0**..... 26
- 6) 15inch large flat panel display ..... 26
- 7) Intuitive and easy operational display ..... 27
- 8) Easy jam removal operation..... 28
- 9) Accurate color feedback with external device ..... 29
- 10) ORUM concept ..... 30
- 11) Much smaller foot print and weight..... 31
- 12) Revised paper tray configuration ..... 31
- 15) Longer lasting consumables..... 31
- 2-8 Appearance Design ..... 32
- 2-9 Others ..... 32
  - 1) Own Integrated type Image controller..... 32
  - 2) Security feature **\*Available at MR2.0** ..... 32
  - 3) Built in HDD and expanded memory..... 32
- 2-9 Accessory configuration and detail ..... 33
  - Compatibility ..... 33
  - Accessory configuration overview..... 34
  - Accessory detail(Finishing) ..... 35
- 2-10 Spec comparison..... 37
- 2-11 Differentiation of Degas1/2/2L..... 38
- 2-12 Differentiation of Degas2L vs Minerva..... 38
- 2-13 Notification ..... 40



## 1 Product overview

### 1-1 Product concept

**“The brand-new engine  
which pursues both profitability and real production performance at the same time.”**

With “Degas” KM delivers all customers the really affordable product which has the performance to come close to MID production product to further promote “Easy path to digital”.

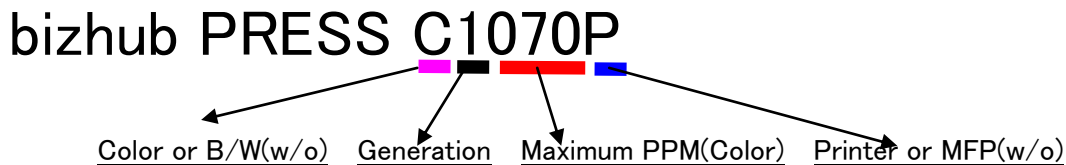
### 1-2 Aim of the product

Regarding the light production printing market , there will be a fierce competition with the competitors which have been launching new products continuously to the market , since it is expecting high organic growth rate world wide. Therefore our objectives of the product launch are as follows.

- Expanding the color PP business by defending it’s predecessor’s sales/MIF base with competitive and profitable new engine with cutting-edge technologies , and actively cultivating ELPP market with 2L version
- Consolidating presence and top position in the world wide LPP market by expanding the customer base to raise the brand awareness of KM “bizhub PRESS”
- Improving profitability of our color PP business by launching the brand new product with more profitable cost structure for both hard and non-hard.

### 1-3 Product naming

From Degas we adapt new naming (numbering) policy for users and sales companies to distinguish the product positioning easier and without confusion.



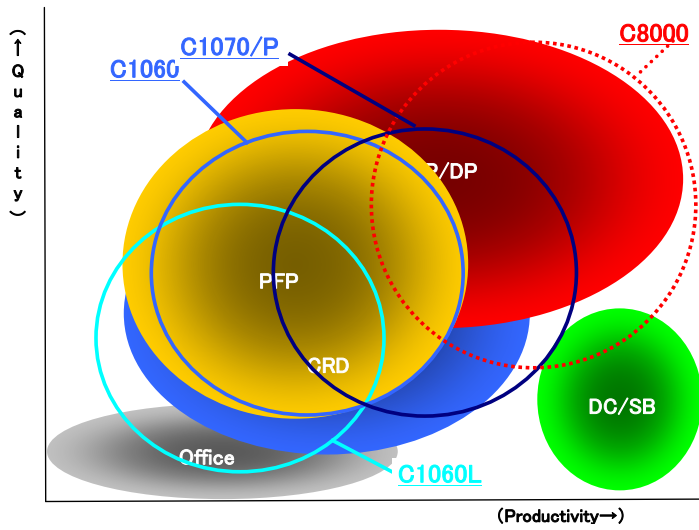
\* Regarding Degas2L , the product name is “bizhub PRO C1060L”

### 1-4 Target customer/ and application

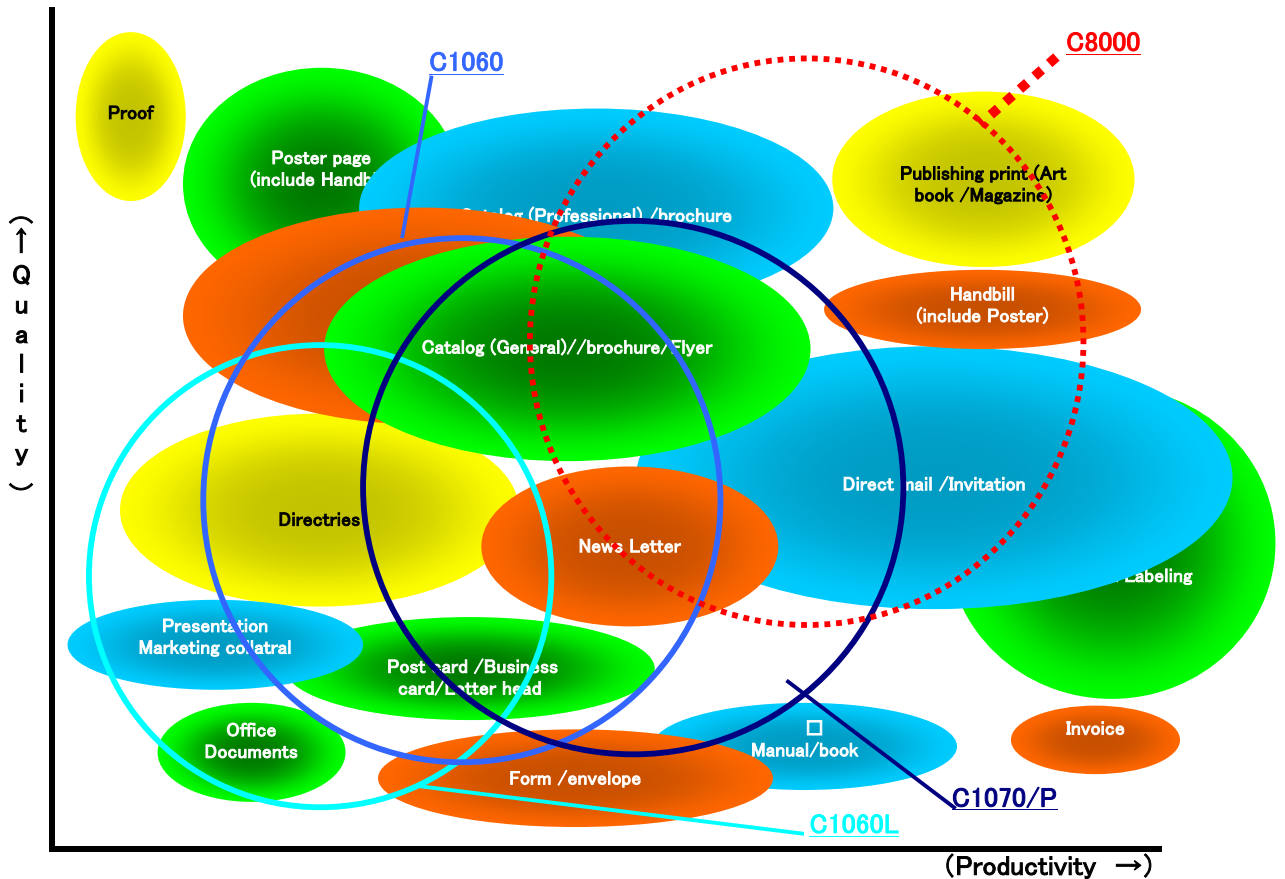
	Target customer	Paper Usage	Replacing MIF	Assumed average monthly print volume (US)	Competitors
Degas1/P	CP/CRD/PFP (MID size)	Mostly Large coated paper	C6500/C6501/P C7000/P/C6000 (C8000)	Clr: 40000p B/W: 15000p Color ratio 73%	Xerox700iDCP/770DCP RicohProC751EX Canon iPC7010
Degas2	CP/CRD/PFP (Small~MID size)	Both L/S and Coated/Plain	C6500/C6501/P C5500/C5501 C6000	Clr: 24000p B/W: 9000p Color ratio 73%	Xerox700iDCP RicohPro C651EX Canon iPC6010
Degas2L	CP/CRD/PFP & Office (Small~MID size)	Mostly A4/Letter plain paper	C500/C8050 C5500/C5501 C6000L	Clr: 15000p B/W: 6000p Color ratio 71%	Xerox Color550/560 iRAdvancePRO C9075/C9065 RicohProC651EX



1) Target market



2) Target application



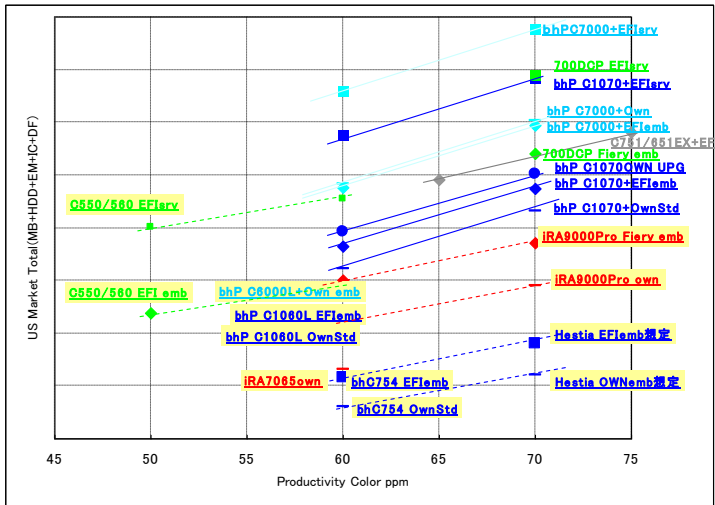
C1070/P/1060/L will cover various customer and application as a series.

C1070/P should be proposed to those who want quality, productivity and scalability. It will succeed C6500/6501/P and C7000/P. C1060 cover those who don't need productivity so much but want quality and affordability especially for initial investment. C1060L should be sold to those who focus on especially initial investment cost and don't need scalability.

1-5 Competitive positioning

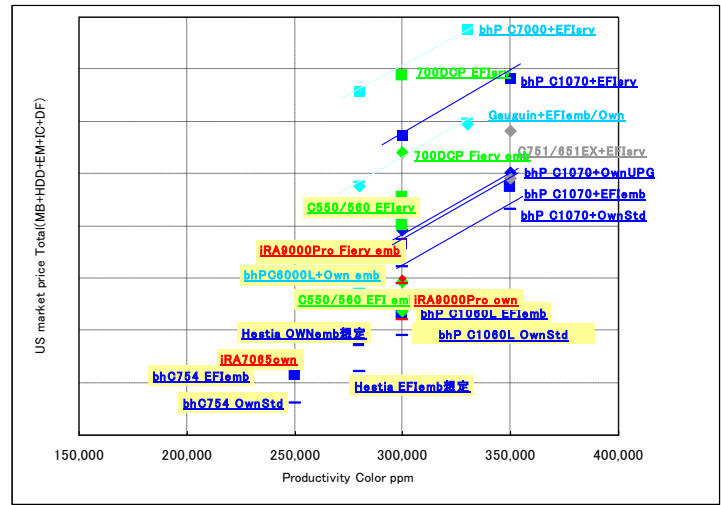


<US market PPM vs Price>

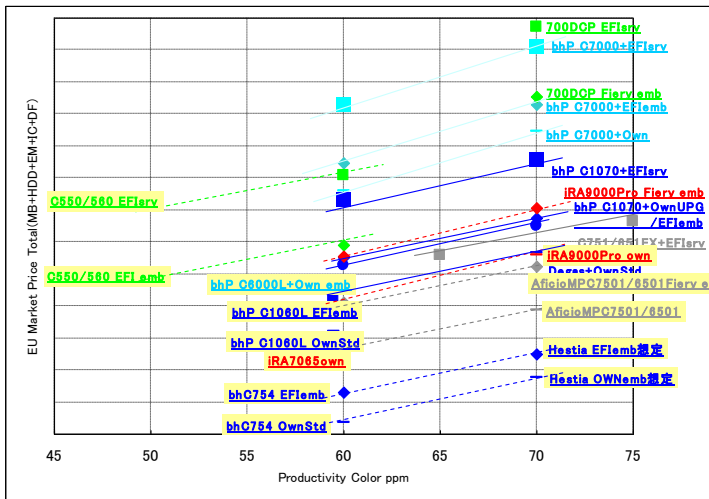


**DRAFT**

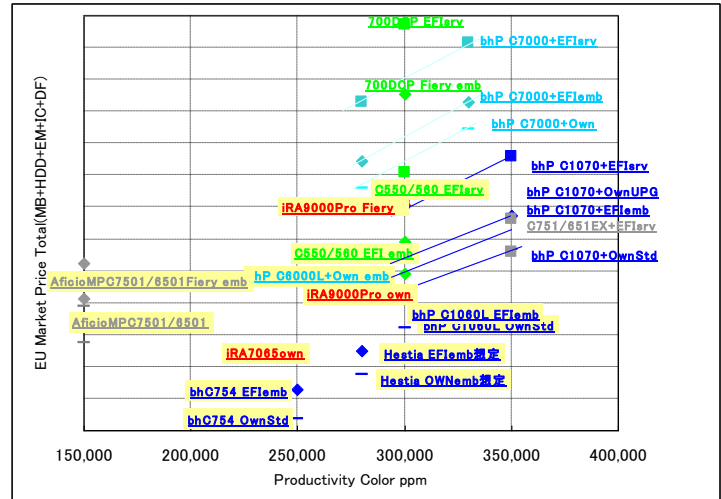
<US market DutyCycle vs Price>



<EU market PPM vs Price>



<EU market DutyCycle vs Price>



C1070/P/1060/L series will cover wider price range and will be much more competitive as pricing than it's predecessor. The rivals of C1070/P/1060 are assumed to be Ricoh Pro C751/651EX and Xerox 700i/770DCP. Those of C1060L are assumed to be Xerox Color 560/550 and Image Runner Advance Pro C9075/9065(C9070/9060 in EU).



KONICA MINOLTA

### 1-6 Key features

# DRAFT

#### Image quality

- 4th Generation SimitriHD<sup>E</sup> toner **NEW!**
- Refined OPC Drum **Enhanced**
- Evolved "S.E.A.D" IV technology **Enhanced**
- Refined image processing algorithm for scan **Enhanced**

#### Media handling

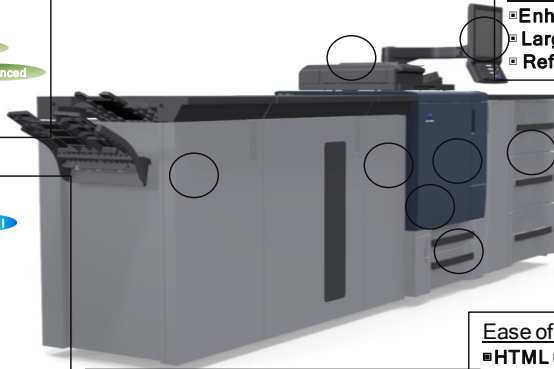
- Newly developed "Suction" Feeder (PF707) **NEW!**
- "Air-assisted" paper feeder "PF602m/LU202" **NEW!**
- Envelope printing support with dedicated fuser option **NEW!**
- Thick paper capability for single/double sided output up to 300gsm **Enhanced**

#### Productivity

- Refined "roll to belt" fuser unit **Enhanced**
- Rated speed up to 176gsm coated paper **Enhanced**
- Optimized magnification control of Auto Duplex **Enhanced**
- High-speed sheet through type ADF (DF626) **NEW!**

#### Stability/Consistency

- Enhanced color output feedback system **Enhanced**
- Largely refined transfer process **Enhanced**
- Refined real time auto internal color adjustment **Enhanced**



#### Reliability

- Newly developed Registration shift mechanism **NEW!**
- Fuser shift mechanism **NEW!**
- Auto Refining developing system **NEW!**
- Air blow paper de-touching system for Fuser **Enhanced**
- Revised relay unit (RU509) **Enhanced**
- Improved de-curling adjustment **Enhanced**
- Cyclone-type air suction system **Enhanced**
- Instruction page for thin paper usage **NEW!**

#### Durability

- Brand-new long-life platform **NEW!**
- Longer lasting key parts and consumables **Enhanced**
- Metal made paper tray **Enhanced**

#### Accessories

- High speed sheet through scanner (DF626) **NEW!**
- Newly developed "Suction" Feeder (PF707) **NEW!**
- Versatile professional AIO finisher (FS532) **NEW!**
- Multi function professional saddle stitcher (SD513) **NEW!**
- Enhanced KM proprietary image controller (IC602) **NEW!**
- Fierly image controller (IC308/415) **NEW!**
- Refined "scratch free" relay unit (RU509) **NEW!**
- Refined "thick paper capable" stacker (LS505) **NEW!**
- Scalable and diverse option configuration **NEW!**

#### Appearance design

- Refined solid & grid concept **Enhanced**
- "Robust" flat & square face **Enhanced**
- Consistency with former generation **Enhanced**

#### Ease of use

- HTML users guide **NEW!**
- User's guide on the operation panel **NEW!**
- "Real time" Remote panel II **Enhanced**
- Front access of toner bottle and waste toner box exchange **Enhanced**
- PC like operation with mouse **NEW!**
- Paper catalogue function enhancement **Enhanced**
- 15inch large flat panel display **NEW!**
- Intuitive and easy operational display **Enhanced**
- Easy jam removal operation **Enhanced**
- Accurate color feedback with external device **Enhanced**
- ORUM concept **Enhanced**
- Much smaller foot print and weight **Enhanced**
- Revised paper tray configuration **Enhanced**
- Longer lasting consumables **Enhanced**

#### others

- Own Integrated type Image controller **NEW!**
- Security feature **NEW!**
- Built in HDD and expanded memory **Enhanced**

**\*Note : Some of the software feature will be available after Firmware MRver.2**



## 2 Detail information of each features and functionality

### 2-1 Image quality

#### 1) 4<sup>th</sup> Generation SimitriHD<sup>E</sup> toner

**NEW!**

bizhub PRESS C1070/1060 series adapts SimitriHD<sup>E</sup> toner which is newly developed to further enhance the image quality and energy saving. The points of enhancement are as follows.

- ✓ 3-dimensional hybrid structure of **new functional polymer** and styrene to deliver offset like luster and energy saving
- ✓ Newly adapted magenta pigment to achieve wider gamut on red area and better lightfastness
- ✓ High-content of color pigment to increase the toner yield for color output
- ✓ Optimized black colorant recipe to improve granularity for both color and mono halftone and skintone

Since SimitriHD<sup>E</sup> toner contains **new functional polymer**, it is fused to paper surface with lower heat and fusing toner can easily follow the roughness of the paper surface to achieve optimized and natural lustre for each type of paper such as gloss and matte coated paper and non-coated paper.

The newly developed magenta toner contains new pigment to optimize the gamut and hue for red area reproduction. It will deliver much more offset like red with wider gamut and improved lightfastness.

SimitriHD<sup>E</sup> color toner contains about 10% more pigment. It will contribute not only to expand the yield of toner bottle but also improve the performance of transfer process to deliver better image quality for color solid area.

Refined SimitriHD<sup>E</sup> + Bk toner has improved electro-photographic property. It will deliver much better half tone and skin tone quality both for color and mono output with less granularity.

イメージ図を入りたい

#### 2) Refined OPC Drum

**Enhanced**

bizhub PRESS C1070/P/1060/L series employ refined OPC Drum which consists of newly developed hydrophobic charge generation material. It is much more stable even in the severe environment such as high humid condition. The OPC also has the world most sensitivity to promise superb image quality, productivity and durability along with Konicaminolta proprietary image processing and process control technologies.





**3) Evolved “S.E.A.D” IV technology**

S.E.A.D. (Screen-Enhancing Active **Enhanced** ssing) is the cutting-edge and Konicaminolta proprietary image processing technology for the bizhub PRESS Color series. As the system of devices becomes more complex, an image processing technology with a higher level of accuracy is indispensable for improving image quality. To fully optimize the characteristics of the engine and maintain a high-quality image processing environment, the image processing system must work in close contact with individual technological processes such as the imaging and development systems.

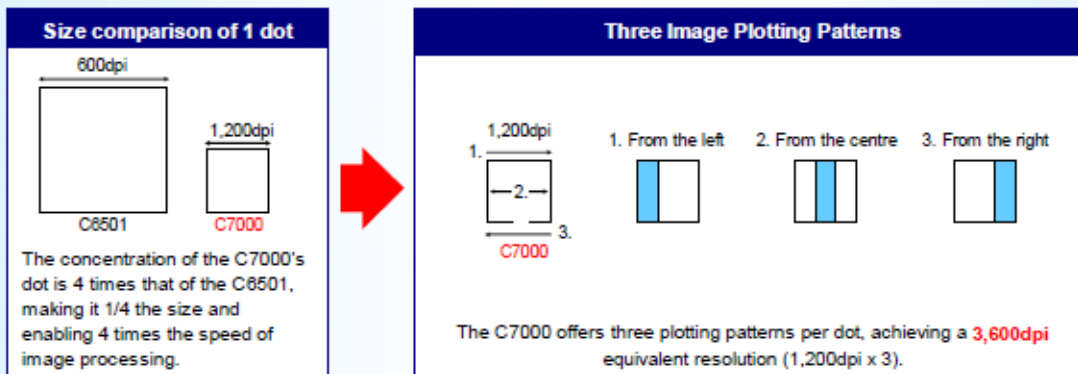
The “proven “ S.E.A.D technology has evolved from stage II to stage IV for bizhub C1070/P/1060/L series. The evolution promises the class-best image quality and color reproduction.

**Main advantages of S.E.A.D. imaging process technology:**

- **Laser exposure controls** write dots for each colour with high accuracy in the proper position
- Unsurpassed image expression is achieved through **dot position control (DPC)**, which segments dots into even finer units, and **multi-bit screening**.
- **Text quality improvement technology** enables optimal print processing based on the attributes of the text.
- The latest ASIC (Application-Specific Integrated Circuit) and a **high-level image retention and stability technology** enable full-digital image control to ensure the stable quality of printed materials to the last sheet, even when the print environment changes.

**Dot Position Control (DPC)**

For each pixel, bizhub Press series has 3 drawing patterns (from left, centre, or right) according to the relationship with the adjoining pixel, and/or the dot formation pattern. Each pixel can also written in fine resolution (1/256 of the total dot width), thereby actually providing a resolution of **3,600 dpi equivalent** (1,200 dpi x 3). In addition to creating minute edges for smoother reproductions of fine lines and characters, DPC adjusts the position of the adjacent pixels during the dot formation of the screen process, achieving natural gradation reproductions without over- or under-expressing the original image.





**Enhanced points of “S.E.A.D IV”**

a. Screen processing

-2400dpi screen processing

It allows much more flexible screen parameter selection without moire

-DMLS function (Newly developed)

Maximum density can be adjusted without screen pattern noise

-1200dpi FMED(FM error diffusion) screen

Resolution and granularity have been improved

-Dither FM screen processing

Less granularity and no moiré achieved



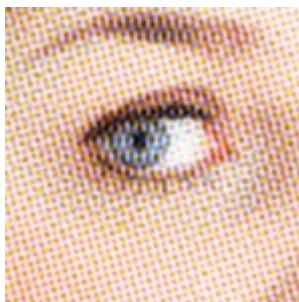
**Dot150**



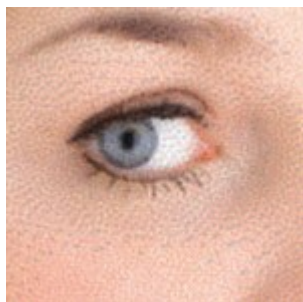
**Dot175**



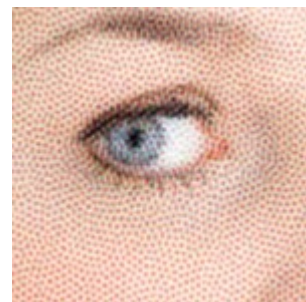
**Dot190**



**Dot210**



**FM1**



**FM3**



b. Outline processing

- Integration of 1200dpi and 600dpi processing
- Smoothing processing (4800dpi equivalent)
- Blending of smoothing and hairline processing
- 2-dot hair line processing
- Image blur reduction function

Outline processing

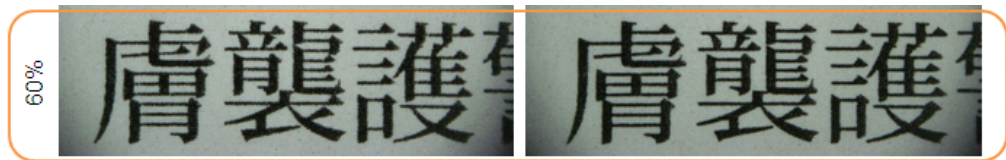
▣Dot190



Outline processing OFF

Outline processing ON

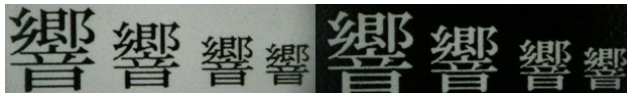
▣FM1



Outline processing OFF

Outline processing ON

Hairline processing



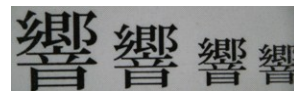
Hairline processing "Strong"



Hairline processing "Weak"

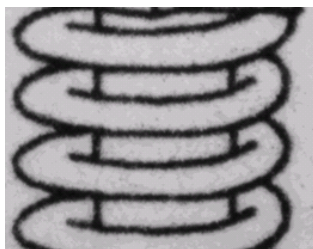


Hairline processing "off"

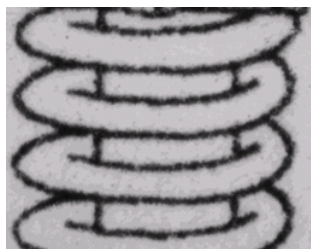


Ref.) Offset print

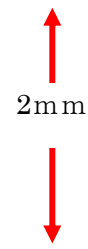
Smoothing



Smoothing "on"



Smoothing "off"



2mm





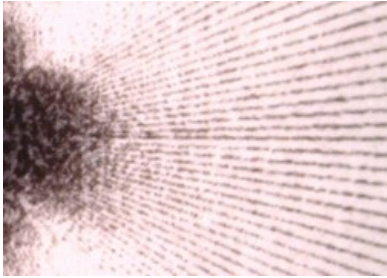
c. Color adjustment

- Automatic adjustment for processed color (please refer to “2-4-1”)
- Toner amount limitation of the engine

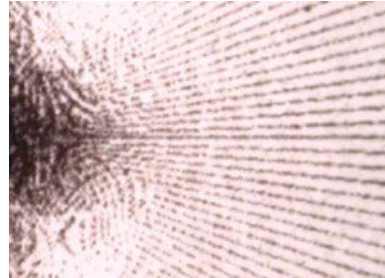
d. Data compression/decompression algorithm

C1070/P/1060/L series adapt refined version of the data compression/decompression algorithm. It will deliver improved hairline and text reproduction.

➤Hairline reproduction



C1070/P/1060/L series



C7000/P/6000/L series

➤3pts text reproduction



C1070/P/1060/L series



C7000/P/6000/L series

4) Refined image processing algorithm for scan **Enhanced**

C1070/P/1060/L series adapt refined version of CPS2010 as the image processing ACIC for scan and copy. It will deliver much more accurate image/text recognition and finer reproduction of text, hairline and gradation.

(実画像データ 領域判別、細線再現、グラデーション)



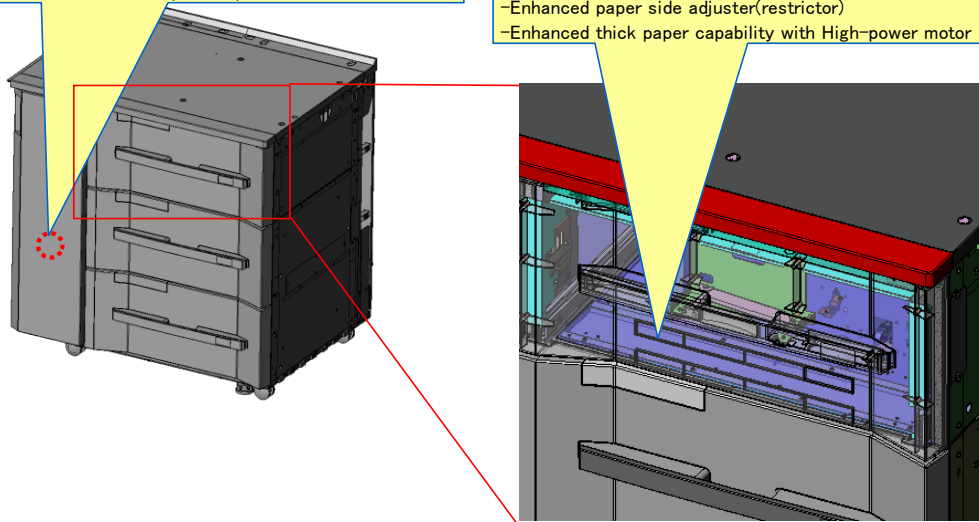
**2-2 Media handling**

**1) Newly developed “Suction” Feeder (PF707) NEW!**

bizhub PRESS C1070/P/1060 can be equipped with newly developed “air-suction” type paper feeder which is base on PF704 for C8000. “air-suction” type feeder had been able to be configured only with mid/high production devices. The configuration will be unique and only one in the LPP segment. It will promise really a reliable and stable paper feeding performance even for thick gross-coated papers.

**Improved accuracy of paper delivery**  
Less tilt and deflection by roller pressure release mechanism

**Improved media-handling**  
-Optimizable air-suction parameter(135parameter)  
-Improved handling for plain-paper and envelope with stabilized air flow  
-Paper shift adjustment for each tray  
-Enhanced paper side adjuster(restrictor)  
-Enhanced thick paper capability with High-power motor

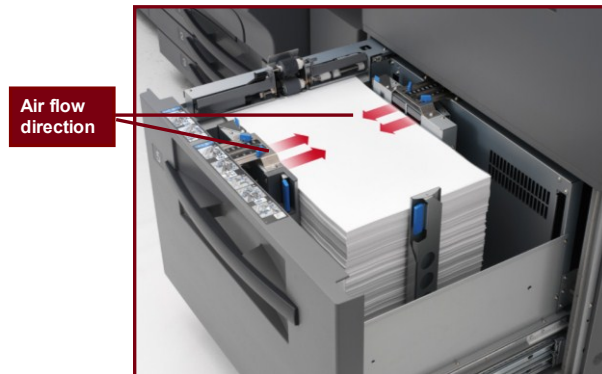


**2) “Air-assisted” paper feeder “PF602m/LU202”**

bizhub PRES C1070/P/1060 series can be equipped with “proven” air-assisted feeder PF602 and LU202. These configurations provide reliable and stable media handling in production environment.

\*Please note that PRO C1060L cannot be configured with PF602.

- **Two blowers on the front and two blowers on the back of the tray eliminate paper-stick which can cause multi-feed**
- **The blowers constantly change the force and frequency of the gusts of air to keep the sheets of paper moving within the tray and unable to stick to one another**
- **Even with high humidity, the air blast feature virtually eliminates multi-feed caused by paper-stick**





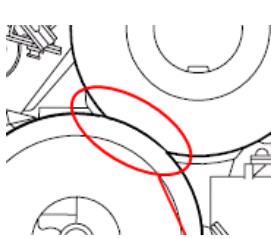
**NEW!**

**3) Envelope printing support with dedicated fuser option**

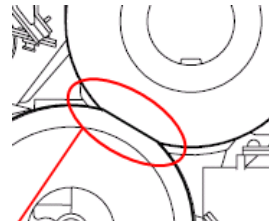
As for bizhub C1070/P/1060 series supports envelope printing officially with dedicated fuser option. It will deliver versatility to customers to capture much more job. The fuser adapts “flat nip” configuration.

It will reduce wrinkling and rippling(waving) which is caused by standard fuser. In terms of feeding , newly developed suction feeder PF707 will promise much surer “pick-up” and “delivery” for envelopes.

\* Please note that only PF707 supports this application.



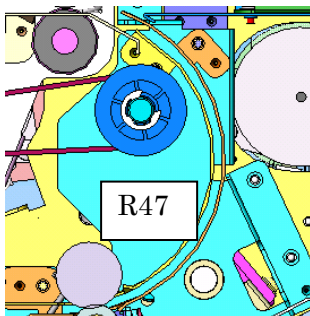
Standard nip configuration



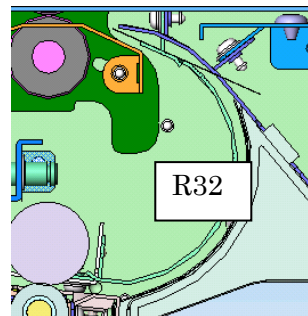
Flat nip configuration for envelope printing

**4) Thick paper capability for single/double sided output up to 300gsm**

bizhub C1070/P/1060/L series have wider paper path for auto-duplex printing. It will make thick paper delivery in auto-duplex printing much more reliable. **Enhanced**



Auto-duplex delivery path of C1070series



Auto-duplex delivery path of C7000series

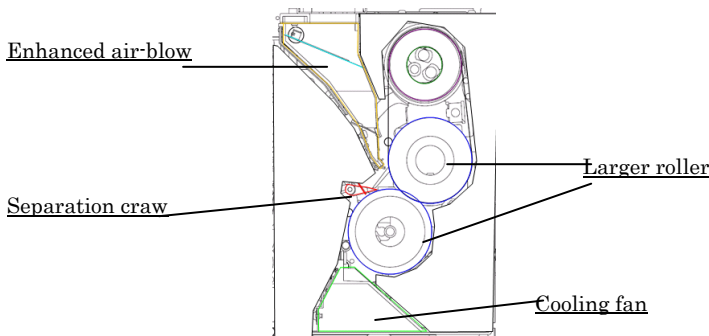
**2-3 Productivity**

**1) Refined “roll to belt” fuser unit**

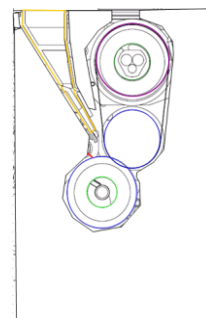
**Enhanced**

To improve productivity and reliability the fuser unit has been refined as following.

- Adapting larger pressure upper and lower roller to enhance thick paper productivity
- Optimized temperature control and belt thickness to contribute to energy saving
- Increasing the amount of air-blow to ensure paper de-touching of thinner paper
- Adapting cooling fan for lower pressure roller to guarantee consistent image quality
- Adapting lower roller separation claw to make paper delivery more reliable



Fuser unit for C1070series



Fuser unit for C7000series

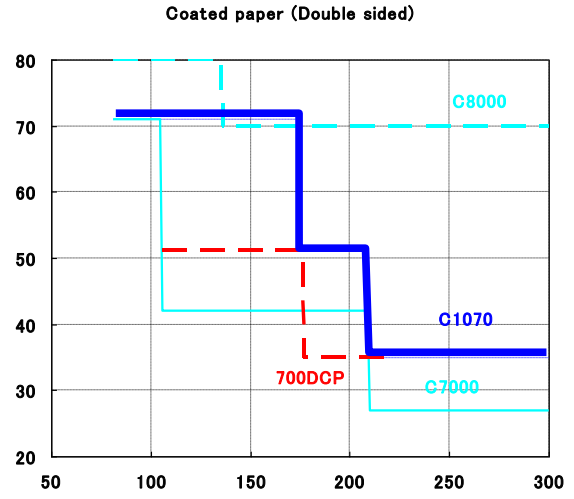
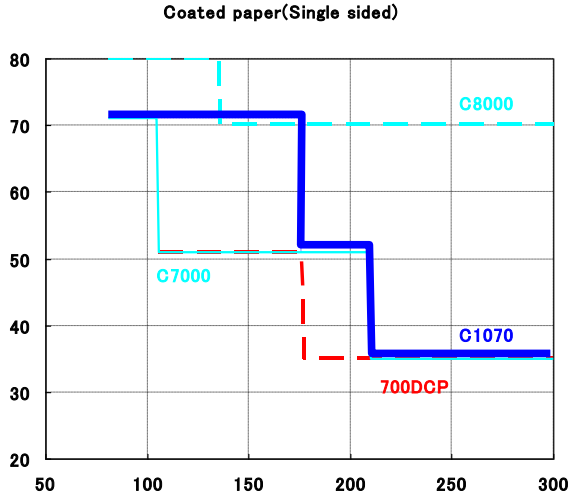


**Enhanced**

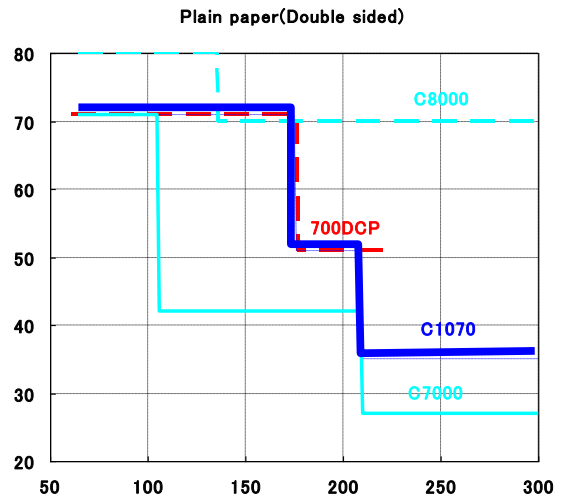
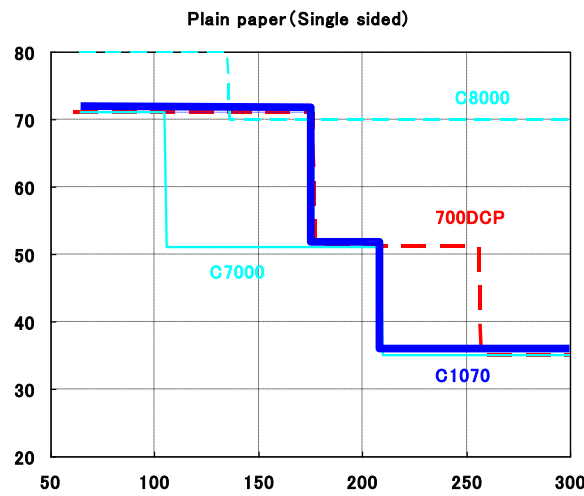
**2) Rated speed up to 176gsm coated paper**

With the refined fuser unit and fully optimized process control, bizhub PRES C1070/P/1060/L achieved large improvement especially for double sided print from it's predecessor, that is rated 70ppm for C1070 and 60ppm for C1060 speed up to 176gsm, without compromising mixed media productivity.

**Productivity for coated paper**



**Productivity for plain paper**



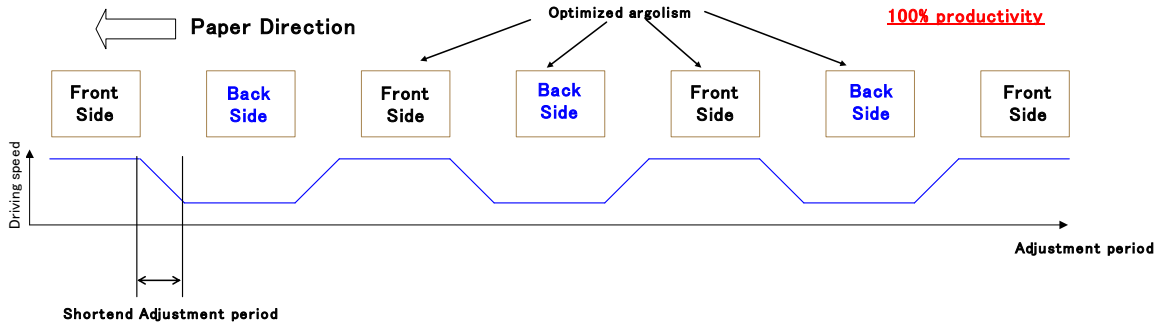


**Enhanced**

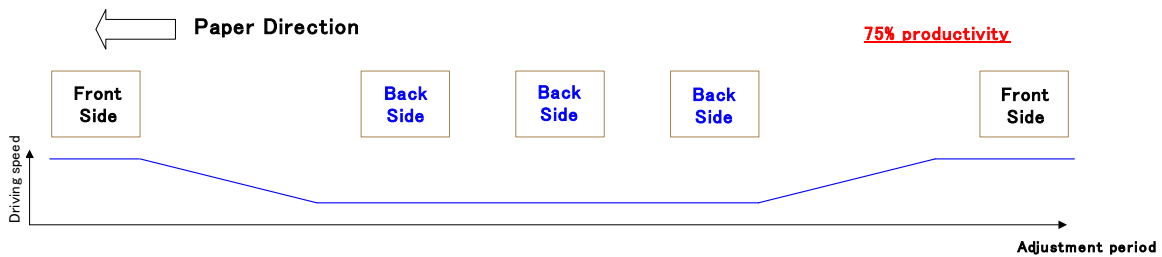
**3) Optimized magnification control of Auto Duplex**

The productivity of Auto duplex printing with magnification adjustment for back side had been a challenge for the previous model. With optimized sequence of paper delivery and revision of polygon motor drive control C1070/P/1060/L series achieved 100% productivity for auto duplex for any case.

C1070/P/1060/L series



C7000/P/6000/L series



**NEW!**

**4) High-speed sheet through type ADF(DF626)**

bizhub PRESS C1070/1060/L series adapts “sheet through” type Auto Document Feeder. It will deliver much more productivity and reliability for scan and copy operation.

\*Please note some shortcomings because of scan mechanism revision

		C1070/1060/L	C7000/6000/L
Configuration	Scan mechanism	Sheet through	Conventional
	Image processing	CPS2010	UltraGray+CPS?
Productivity	Scan speed	Color 70opm(300dpi) Color 40opm(600dpi)	Color 40opm(600dpi)
Document handling (ADF)	Mzimum document size	297 × 431.8	303 × 438
	Document auto detection	ISO·B NG	ISO·B OK
	tab paper scan	NG	OK
	Paper weight	50~128gsm(Duplex) 35~210gsm(Simplex)	129~210gsm(Thick paper mode S/D) 35~50gsm(Thin paper mode S/D)
	Scan magnification	Can not enlarge	
Image quality (copy)	Uniformity in a copy	Ratiing: A	Ratiing: B
	Text quality	Ratiing: A	Ratiing: B+
	Color reproduction	Ratiing: A	Ratiing: B+
	諧調性	Ratiing: A	Ratiing: B+
		Advantage	
		Shortcoming	

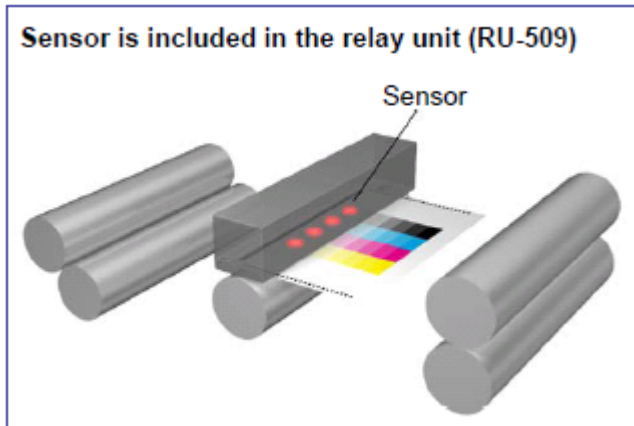




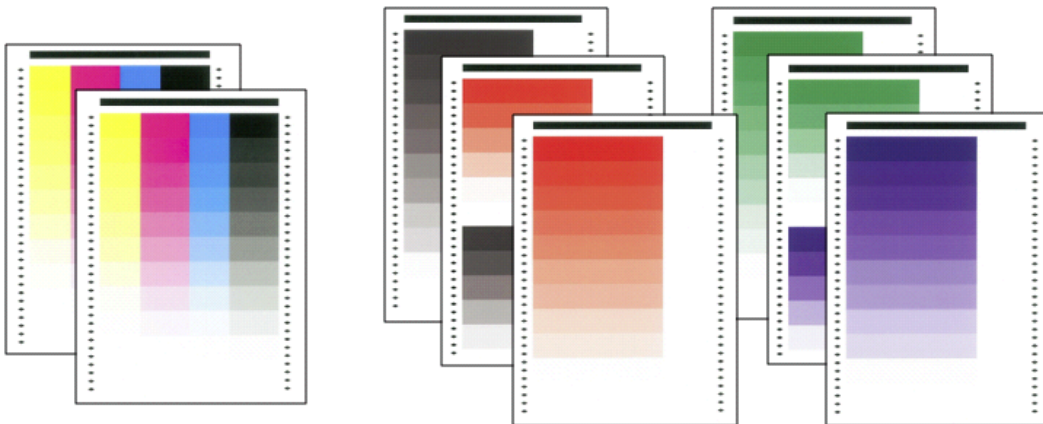
2-4 Stability/Consistency

1) Enhanced color output feedback system **Enhanced**

C1070/P/1060series adapts enhanced version of “proven” inline color output feed back system. Since the previous color output feedback system measures only CMYK color, it has occasionally some challenge for the accuracy for a process color calibration. Refined system measures not only CMYK color but also RGB color directly. It will deliver the improved accuracy and stability of not only each color but also process color reproduction. It will also contribute to the automation of color management to achieve “less human touch”.



-Color Chart for new output feed-back system

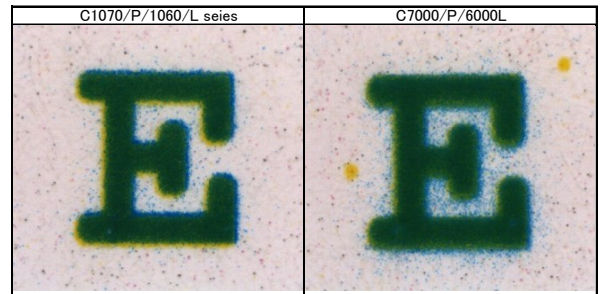
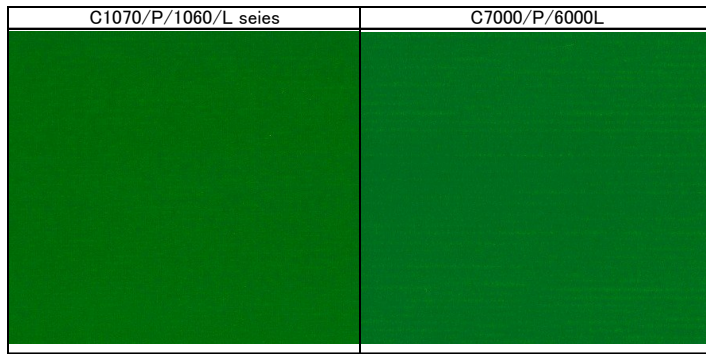
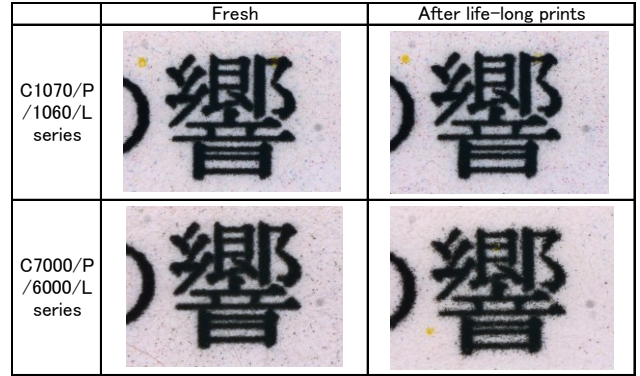
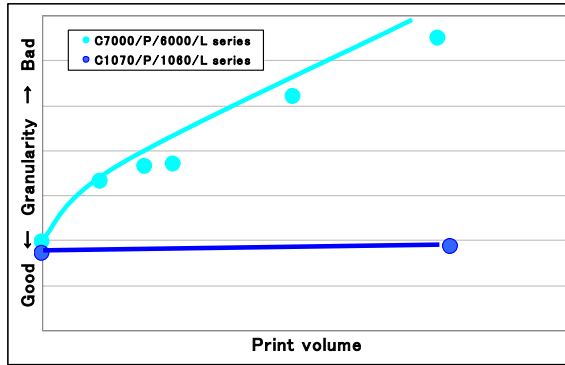




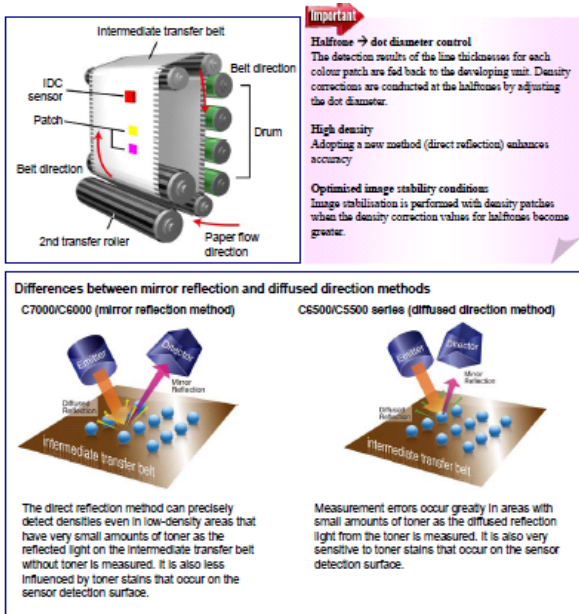
2) Largely refined transfer process **Enhanced**

Since revision of the material design for the intermediate transfer belt, the deterioration of image quality such as granularity and text diffusion after life-long prints will be almost eliminated. Moreover with optimization of the transfer process control, the engine deliver fine output without image defects such as uneven transfer in cool and dry condition and text blur of processed color text.

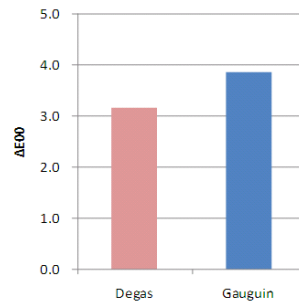
With above improvements, the product can surely respond to high customer requirement for good and stable image quality.



3) Refined real time auto internal color adjustment **Enhanced**



The density correction data are fed back to the main body to calibrate internal color table by reading CMYK patch on the IDC with density sensor. The “proven” process control technology is also equipped to C1070/P/1060/L series. Moreover refined calibration method will deliver not only higher productivity but also accurate and stable color reproduction.



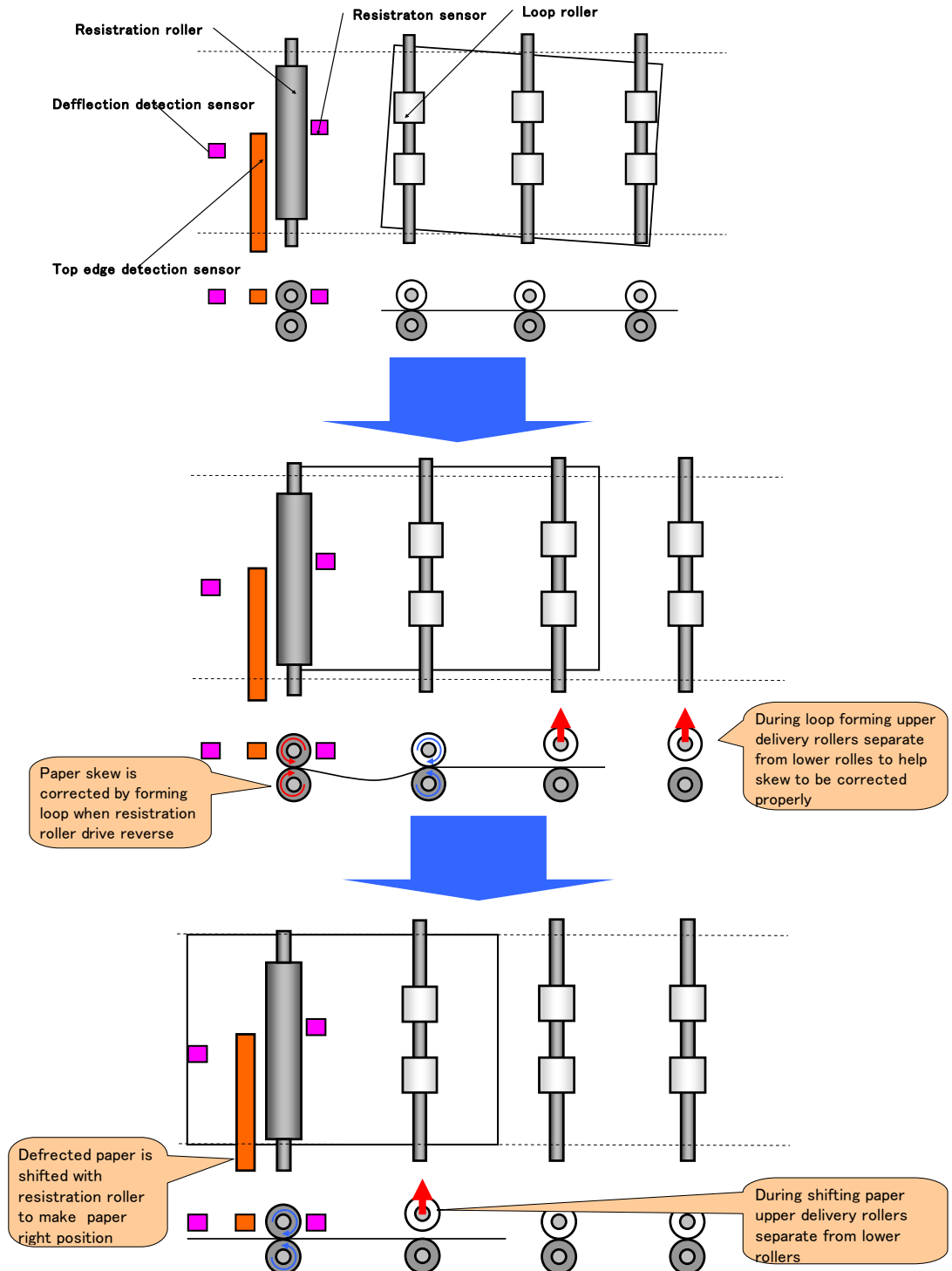
C1070 C7000



2-5 Reliability

1) Newly developed Registration shift mechanism **NEW!**

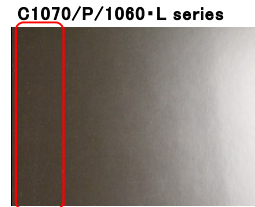
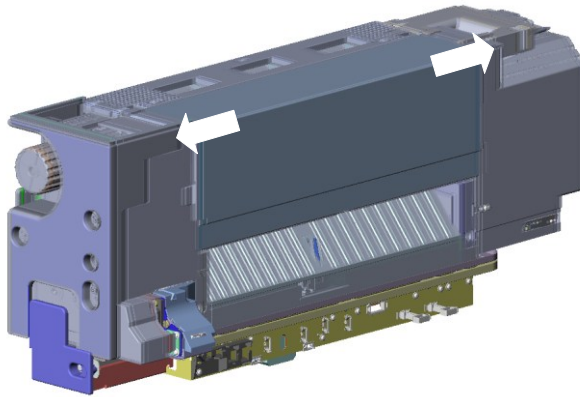
bizhub C1070/P/1060/L series adapts newly developed “registration shift mechanism” which will deliver much more accurate front-to-back registration to meet professional requirement.





2) Fuser shift mechanism **NEW!**

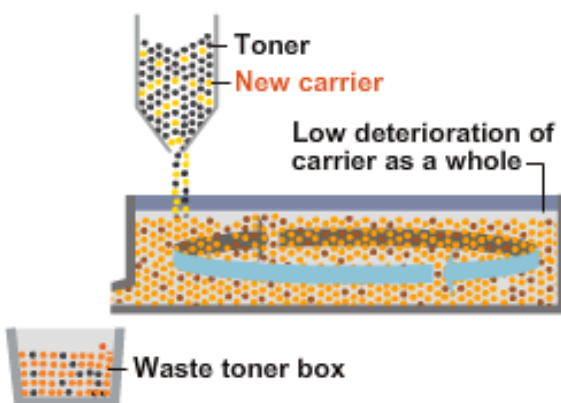
After large quantity of narrow thick paper output fuser belt had got scratch to cause image noise such as stripe line in predecessor models occasionally. Newly equipped “fuser shift mechanism” will drastically reduce the defect. The fuser unit itself shifts about several mm back-and-forth in vertical direction against paper path to distribute the tiny scratch on the edge of the fuser belt to prevent deep scratch to be formed. With this new function user doesn't need to prepare a fuser dedicated for small size print and it will contribute to reduce service call.



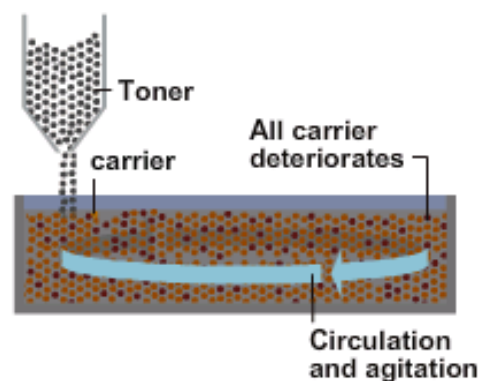
3) Auto Refining developing system **NEW!**

“Auto Refining Developing System (ARDS)” is to automatically refreshing developer by supplying fresh carrier as being premixed in the toner. It prevents developer from deterioration to deliver fairly consistent image quality. bizhub C1070/P/1060/L series adapts the system to not only Bk but also CMY color to promise stable and excellent full color image quality. Moreover the system drastically expands the yield of developer, as same as development unit life, to contribute to maximize user uptime and the reduction of service cost.

**Auto-Refining Developing System**



**Conventional Developing System**

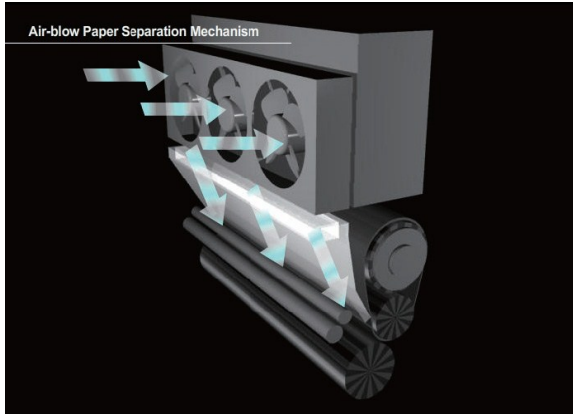




5) Air blow paper de-touching system for Fuser

Enhanced

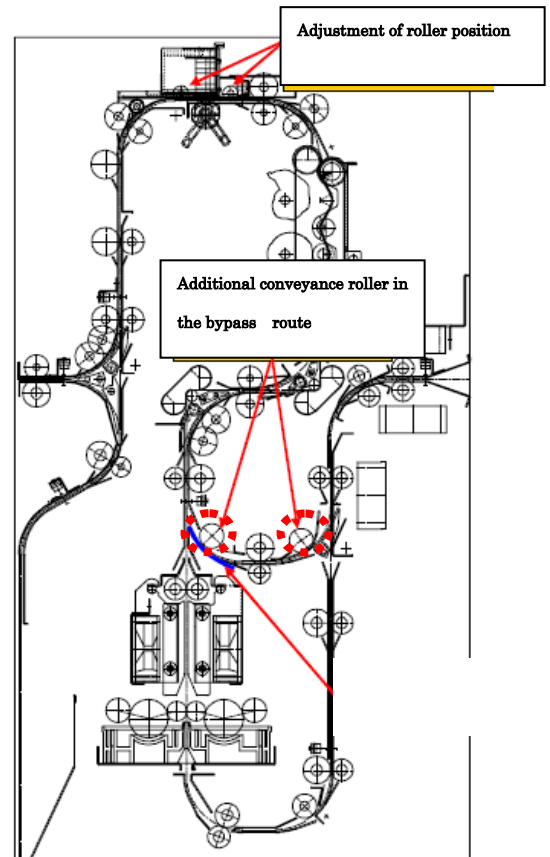
The “proven” air-blow paper de-touching mechanism is equipped to bizhub C1070/P/1060/L series too. It delivers air to prevent the paper from wrapping around the upper fusing belt, thereby improving the fusing unit's paper feeding reliability. The air-flow amount is set for each paper type automatically. It also can be set manually with 7 levels.



6) Refined relay unit (RU509)

Enhanced

Previous relay-unit occasionally has some challenge about scratch in case of thicker grosser coated paper. Refined relay-unit eliminate this problem with additional conveyance rollers.





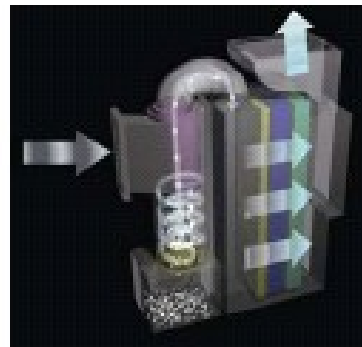
**Enhanced**

**7) Improved de-curling adjustment**

De-curling parameter can be adjusted manually for both RU and engine. They will provide flexibility for de-curling adjustment for various condition such as humidity, paper types, toner coverage and so on.

**8) Cyclone-type air suction system**

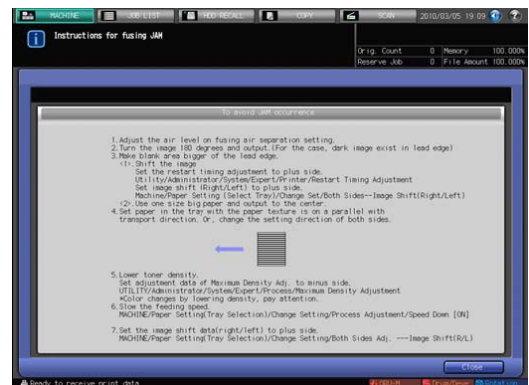
The high-dust collection cyclone-type air suction system is capable of collecting approximately 3times more toner than that of C6501/5501series. This reduces the number replacement frequencies for deodorization, dust collection and de-ozone filters, thereby contributing to reduced machine downtime.



**9) Instruction page for thin paper usage**

C1070/P/1060/L series shows caution notices on the display for thin paper usage.

Note: Please consult the Customer Engineer (CE) for the usage of this function.







2-6 Durability

1) Brand-new long-life platform **NEW!**

C1070/P/1060/L series adapts more compact but more rigid frame than it's predecessor. It's iron-made box-type double-layered chassis to achieve excellent durability even under heavy usage. The double layer of the bottom and centre panels for the box-type horizontal panel frame achieves a highly rigid skeletal structure for the main body, to prevent vibration and twisting for stabilized performance even in heavy usage.



2) Longer lasting key parts and consumables **Enhanced**

With longer-life consumables and more durable parts than it's predecessor model, C1070/P/1060/L series has a duty cycle expanded from 330,000 sheets to 350,000 sheets. Its best -in-class machine reliability contributes to maximize uptime and reducing service cost.

Function	C1070/1060	C7000/C6000	C6501
Duty cycle(A4/Letter)	350000/300000 prints	330000/280000 prints	300000 prints
O.R.U.M. (Operator Replaceable Unit Management) *1	Available	Available	Not available
Drum life (A4/Letter)	460000/415000 prints	220000/180000 prints	20000prints
Developer life (A4/Letter)	1260000/1260000 prints	340000/300000 prints	200000 prints
Toner K (A4/Letter 5% coverage base)	42000 prints	45000 prints*2	38500 prints
Toner C/M/Y (A4/Letter 5% coverage base)	57000/58000/54000 prints	30000 prints*2	200000 prints
Fusing belt	600000 prints	41500 prints*2	400000 prints
Fusing roller	1200000 prints	31000 prints*2	200000 prints

\*1 Not available in all areas.  
\*2 Will vary according to conditions.

3) Metal made paper tray

C1070/P/1060/L series has robust metal-made paper tray while competitor's product is plastic made. Moreover lower tray has the capacity of 1000sheets for large size. They will deliver more stable, accurate and productive paper handling than competitor's product.

(なんか写真が欲しい、下段と一部上段を引き出した状態の)

**2-7 Ease of use****1) HTML users guide****NEW!**

Since user's guide has been provide as PDF , it has had some challenge in actual usage to reach the information what users need. For C1070/P/1060/L series it will be provided as html & JAVA format. Users can reach what they want to know by just clicking hyper link. Moreover additional information can be found by click to pop-up windows. It will improve ease of use for users to contribute to raising customer satisfaction.

(キャプチャー画面かなんかが欲しい)

**2) User's guide on the operation panel \*Available at MR 2.0****NEW!**

User's guide has been prepared as a booklet and a CR-ROM so far. Besides them C1070/P/1060/L series are equipped with the user's guide "on the operation panel". With this new feature, users can refer the document any time beside the machine. It will reduce his time not only for searching the booklet but also for browsing in it to achieve "stress-free operation".

(なんか写真が欲しい)

**2) "Real time" Remote panel II \* Available at MR 2.0 only for C1070/P****Enhanced**

Bizhub PRO/PRESS have been equipped with the "remote panel." However it has some challenge for response speed in operation. Refined "remote panel" achieved quick response to be "real time". Utilization cases are assumed to be followings.

- With remote tablet, user can refer jam removal instructions right in front of the place where jam has occurred.

-In case of test print user can perform print operation while checking output in front of a finisher

(なんか写真かイメージ図が欲しい)





3) Front access of toner bottle and waste toner box exchange

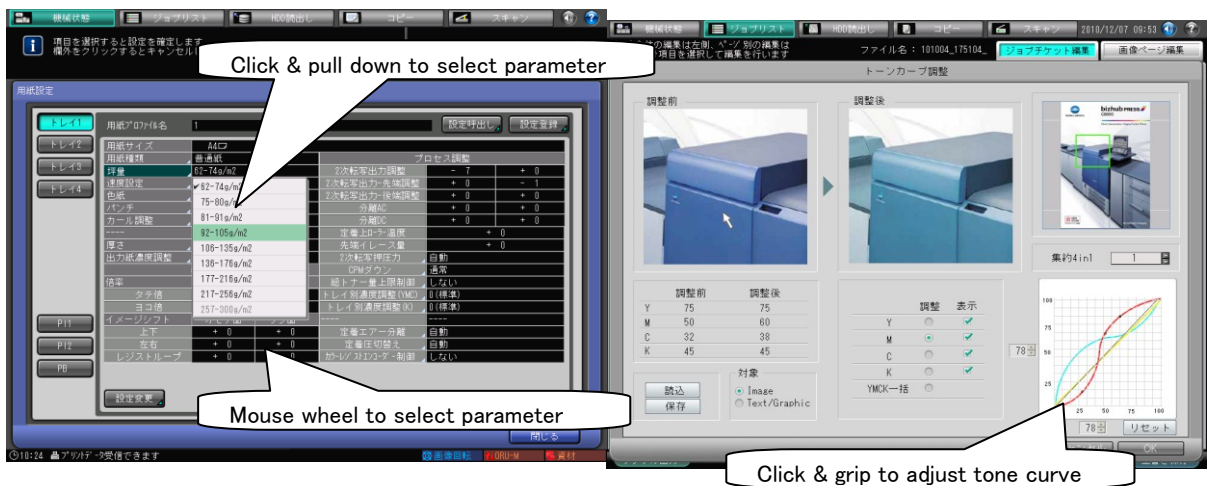
Thanks to the downsizing of process units such as PH and development units and refined design work of the engine as a whole, the front access of toner bottle and waste toner box have been achieved. These modifications make replacing procedures easier to reduce time and stress of users.

(なんか写真が欲しい)

4) PC like operation with mouse **NEW!**

The operation panel of C1070/P/1060/L can be operated with a mouse like PC. This new functionality will improve operability to achieve “stress free” job operation for users.

- Each setting and parameter can be changed by click & pull down menu on the each initial display without transition to dedicated setting pages.
- Parameters, such as “image shift” amount, magnification % and so on, can be changed with mouse wheel.
- Drag & drop operation in job editing can be performed also with mouse.
- Click & grip operation to adjust tone curve can be performed with mouse.





5) Paper catalogue function enhancement \*Available at MR 2.0

Paper catalogue in a engine for C1070/P/1060/L has been improved functionally.

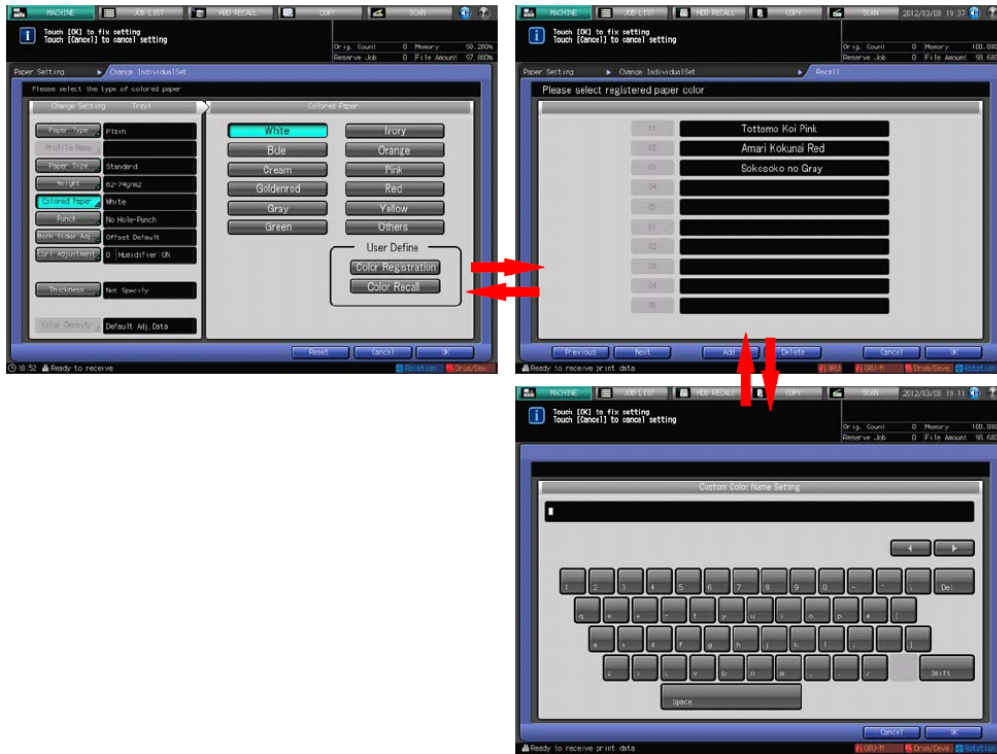
-The data can be imported and exported via USB memory

(Currently it can be performed only via the web utility.)

-Selectable paper type setting has been expanded

(Blue,Goldenrod,Gray,Green,Ivory,Orange,Pink,Red,White,Yellow,Cream,Others,UserDefine)

\*100type can be registered as UserDefine



6) 15inch large flat panel display

C1070/P/1060/L series employs a large 15-inch color LCD touch panel display that is both easy to see and use. The angle of the control panel can be adjusted for easier operation, and includes an easy-to-understand GUI and guiding messages for smooth operations of each type of setting.



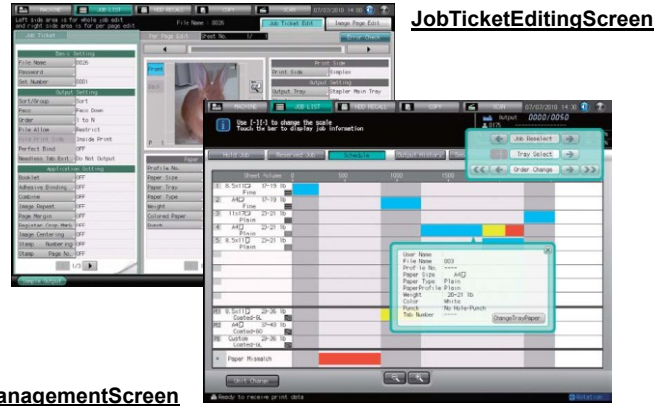


**7) Intuitive and easy operational display**

Connecting with IC602 KM “Hikari” Color controller, professional workflow management and job editing can be performed.. In addition to making color adjustments and pagination changes for RIP-completed jobs from the control panel, currently printing jobs and reserved jobs can be displayed for scheduling, and settings can be changed for reserved jobs and paper trays. These functions allow quick changes to the order of jobs before printing and changes to settings from the control panel.

**-Printing job management from control panel**

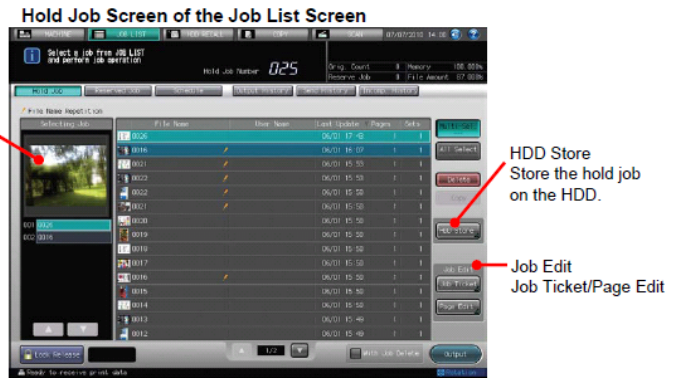
The Job List Screen allows you to check/operate [Hold Job edit] / [Reserved Job edit] / [Schedule management] / [Output History/Send History] / [Incomplete History]



**a. Hold Job edit**

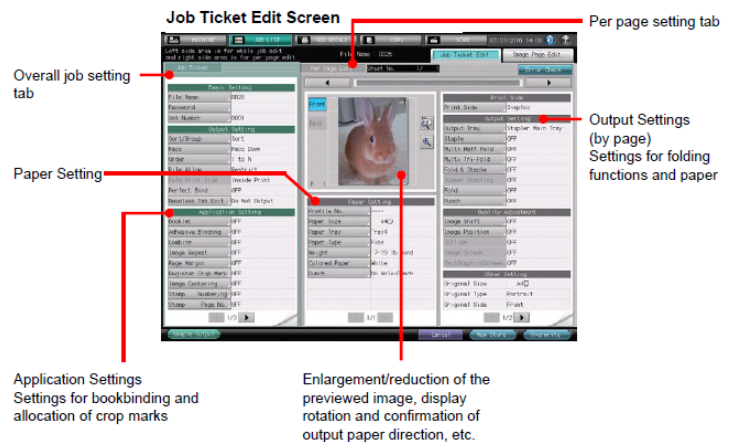
Data for a maximum of 100 jobs can be saved. Operations such as sorting jobs by file names, latest update dates, number of pages and number of sets, along with editing of tickets for jobs on hold, and page editing can be made from the control panel. In addition, the data can be locked by setting a password.

Preview of the selected job's first page.



**b. Job Ticket edit**

In addition to an easy-to-understand preview display, confirmations and changes to settings can be made smoothly as item settings for each page and item settings for the entire job can be displayed on a same screen.





**c. Image page edit**

Modification of the page composition and paper settings for inserted pages can be made on the control panel. Previews of inserted images allow easy confirmation of job details.

**Image Page Edit Screen**

Thumbnail display  
Up to 30 sheets can be displayed on a single screen.

Insert Point display  
The mark for the selected part will light up.

Insert Sheet  
Setting details can be confirmed in a sample output beforehand.

Settings for image insertions, paper insertions and chapter divisions

**When selecting inserted image tabs**  
Thumbnail displays of inserted images can be confirmed.

**d. Reserved job confirmation**

The printing priorities for reserved jobs can be altered on the Reserved Job screen. Ticket details can also be confirmed.

**Reserved Job Screen**

**Ticket Details Screen**

**e. Schedule screen**

The Schedule screen displays the jobs which are displayed on the Hold Job screen such as currently printing, stopped, and on hold jobs. The screen can be changed according to the sheet volume, expected time, and usage time. Changes to the order of the jobs, and the setting of trays can also be conducted on screen. The availability of the appropriate paper and the necessity of paper supplies can be confirmed with colour-coded displays, so supplying of paper and paper changes can be made beforehand for large volume printing jobs.

**Schedule Screen**

Screen can be changed to show:  
• Sheet volume  
• Expected time  
• Usage time

Order Change

Enough paper supplied for printing.

Paper supply is expected to be depleted.

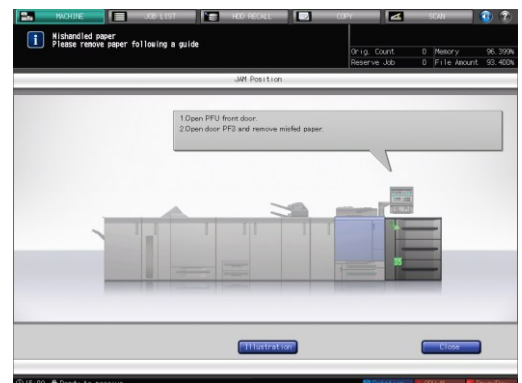
Caution that the job may be interrupted during printing.

Change Tray Paper

**8) Easy jam removal operation**

Instruction of jam removal is easy and intuitive.

- Procedures are displayed as step by step.
- Sections to be processed are high-lighted by markers
- “How to do” messages are described in balloon.





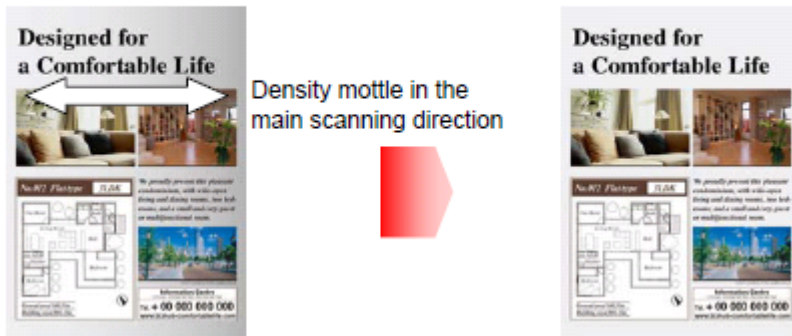


Enhanced

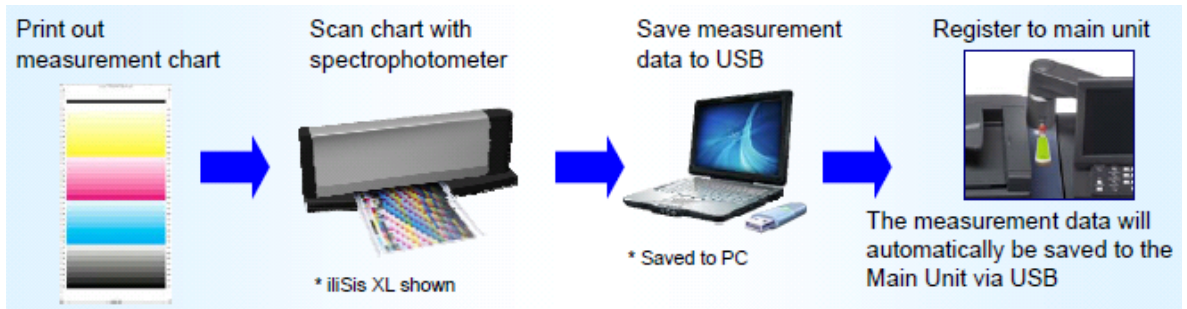
9) Accurate color feedback with external device

By utilizing x-rite's spectrophotometer, C1070/P/1060/L series provides fine density adjustments in the main scanning (horizontal) directions. The measurements with the spectrophotometer for the output charts have been stored into the engine via USB for the previous model. From C1070/P/1060L series it can be performed via network connection too. New feature will further improve operation efficiency during registration and set-up. The density adjustment width for main scanning (horizontal) are 32 divisions; and through a 256-step fine adjustment function, providing consistently high image quality and color reproduction with stable calibrations throughout the print surface.

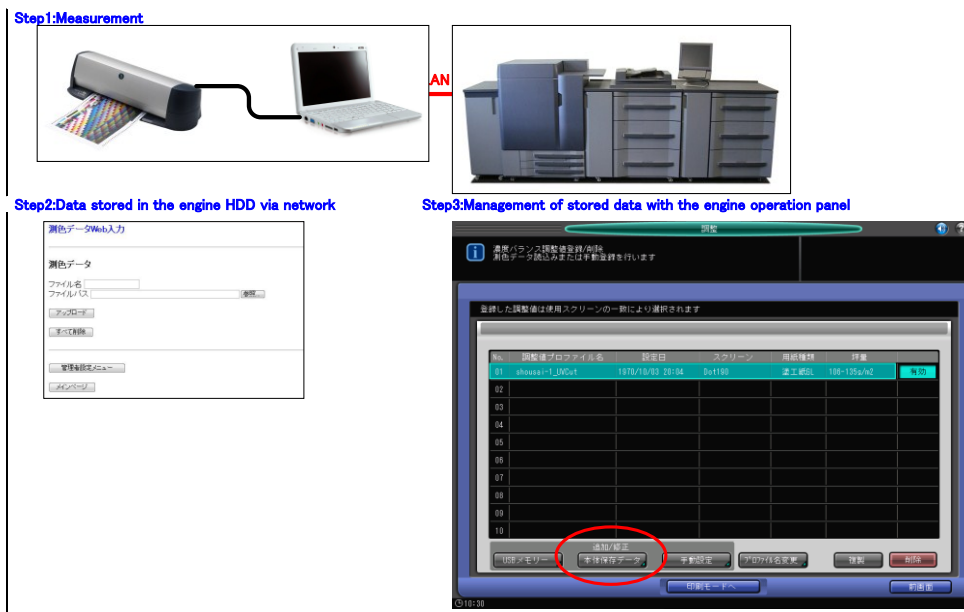
The spectrophotometer eliminates uneven densities on the print surface (main scanning direction)



-Data management flow via USB



-Data management flow via network





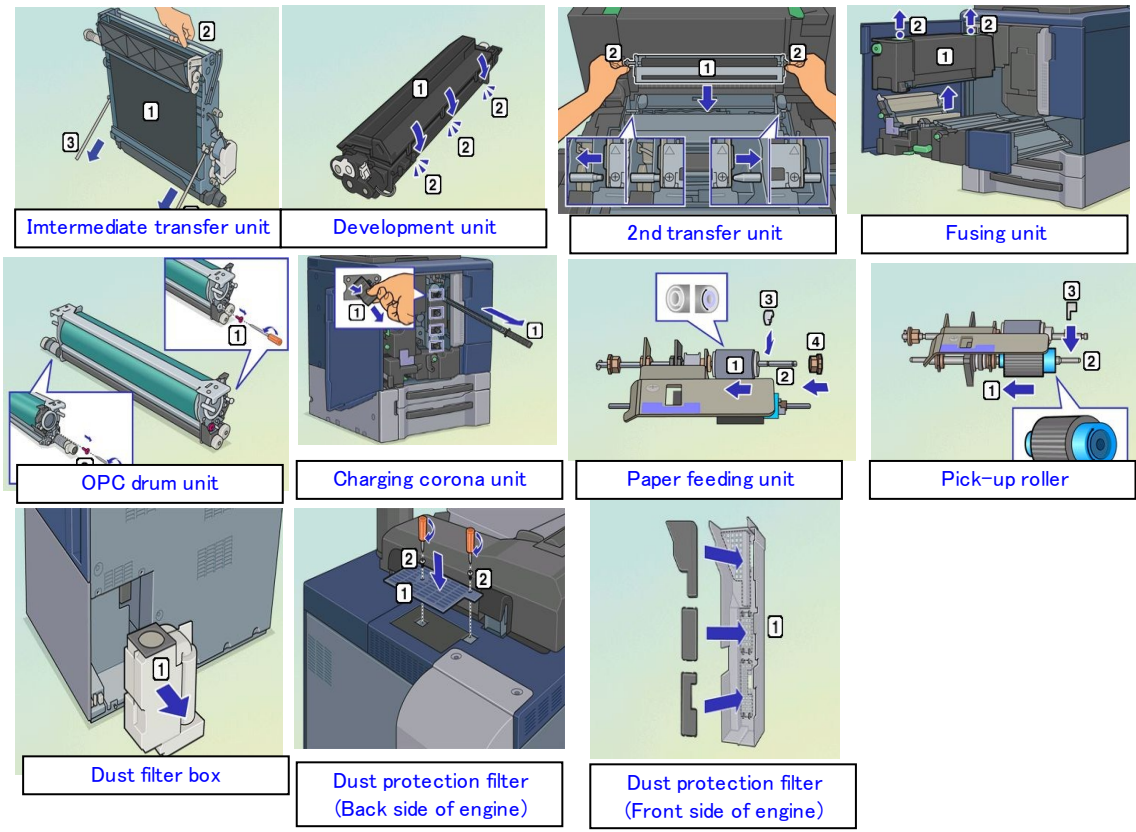
10) ORUM concept

Enhanced

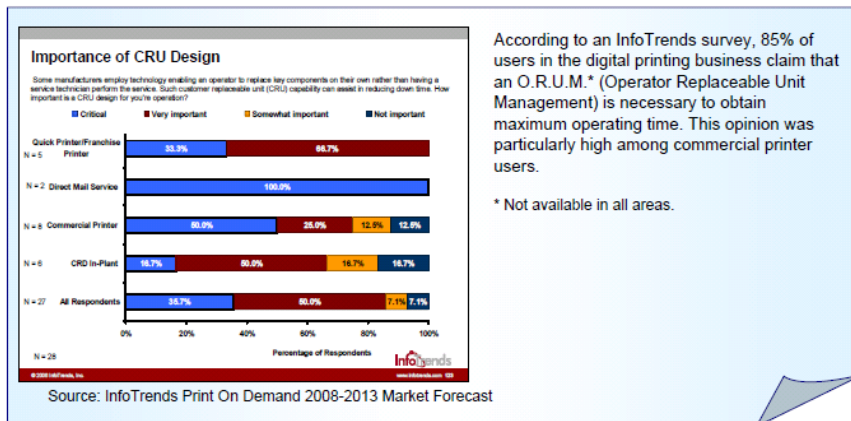
C1070/P/1060/L series is available with the Operator Replaceable Unit Management\* that allows users to decide the timings for parts replacements to maintain image quality, adjustments, and machine cleanups. Key users can exchange replaceable parts as soon as required, and regular parts exchanges can be planned to suit production schedules to help significantly improve overall productivity for time-critical production runs. C1070/P/1060/L series' O.R.U.M.\* also allows the users to manage the history of parts replacements through a built-in database that can be easily operated with touch panel operation.

\* Not available in all areas.

-Replacableunits



-Significance of O.R.U.M.



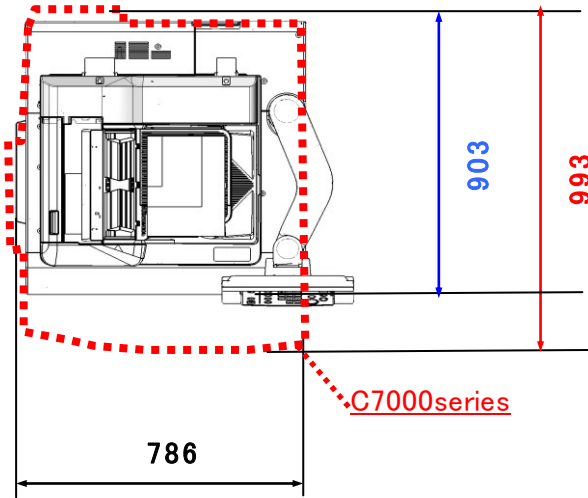
According to an InfoTrends survey, 85% of users in the digital printing business claim that an O.R.U.M.\* (Operator Replaceable Unit Management) is necessary to obtain maximum operating time. This opinion was particularly high among commercial printer users.

\* Not available in all areas.



**11) Much smaller foot print and weight** **Enhanced**

Thanks to the refining design work of engine as a whole and adapting compact component and revision of the layout inside engine, C1070/P/1060/L has achieved much smaller foot print and weigh than it's predecessor without compromising robustness and reliability.



**12) Revised paper tray configuration** **Enhanced**

Paper tray configuration of the engine has been revised. C1070/P/1060/L has two drawers. It will contribute to productivity and giving “production” look along with flat and square face design.

**15) Longer lasting consumables** **Enhanced**

Thanks to the technical advancements such as the Auto Refining development. The yield of C1070/P/C1060/L consumables are expanded from that of the predecessor model. Furthermore the toner bottles can be replaced “on the fly”. Those features will not only improve ease of use but also contribute to maximize user uptime with uninterrupted operation.

Function	C1070/1060	C7000/C6000	Achieved by
Drum life (A4/Letter)	<b>460000/415000 prints</b>	220000/180000 prints	Optimization of cleaning process
Developer life (A4/Letter)	<b>1260000/1260000 prints</b>	340000/300000 prints	Auto Refining development
Toner K (A4/Letter 5% coverage base)	<b>42000 prints</b>	41500 prints*2	
Toner C/M/Y (A4/Letter 5% coverage base)	<b>57000/58000/54000 prints</b>	31000 prints*2	Enlarging toner bottles

\*1 Not available in all areas.

\*2 Will vary according to conditions.

\*Also refer to 2-6-2.



**2-8 Appearance Design**

Appearance design work is based on the following policy.

- Appealing “presence” of the product by adapting solid design and deep blue color with carbon like texture which is independent from that of accessories
- Also appealing “refined” and “compact” image of the product with the design.

C1070/P/1060/L series has flat and square appearance compared to it’s predecessor model. It will give users the impression of being more suitable for production usage even if it has smaller look.



**2-9 Others**

**1) Own Integrated type Image controller**

C1070/P/1060/L series employ “Integrated architecture” for the engine control and image controller. The architecture adapts Intel CPU. Those feature promise much more productivity even for it’s basic configuration. It also contribute to reduce setup work and time in comparison with it’s predecessor IC601.(Gauguin との比較写真欲しい)

**2) Security feature \*Available at MR2.0**

Data security is getting to be more important even in production environment.C1070/P/1060/L series features the encryption of the data in the HDD of the engine.

	Encryption	Single Job	MultiJob (Job Reservation )	Settng	
Degas1/1P	Hardware	Yes	Yes	Default:off	Administrator
Degas2/2L	Software	Yes	No	Default:off	Administrator

**3) Built in HDD and expanded memory**

C1070/1060/L(MFP) series employ built in type HDD and expanded memory. There will be no need for attachment additional HDD and expanded memories in case of high volume continuous copy with ADF. It also contributes to reduce setup work and time.





2-9 Accessory configuration and detail

-Compatibility

1)Accessories

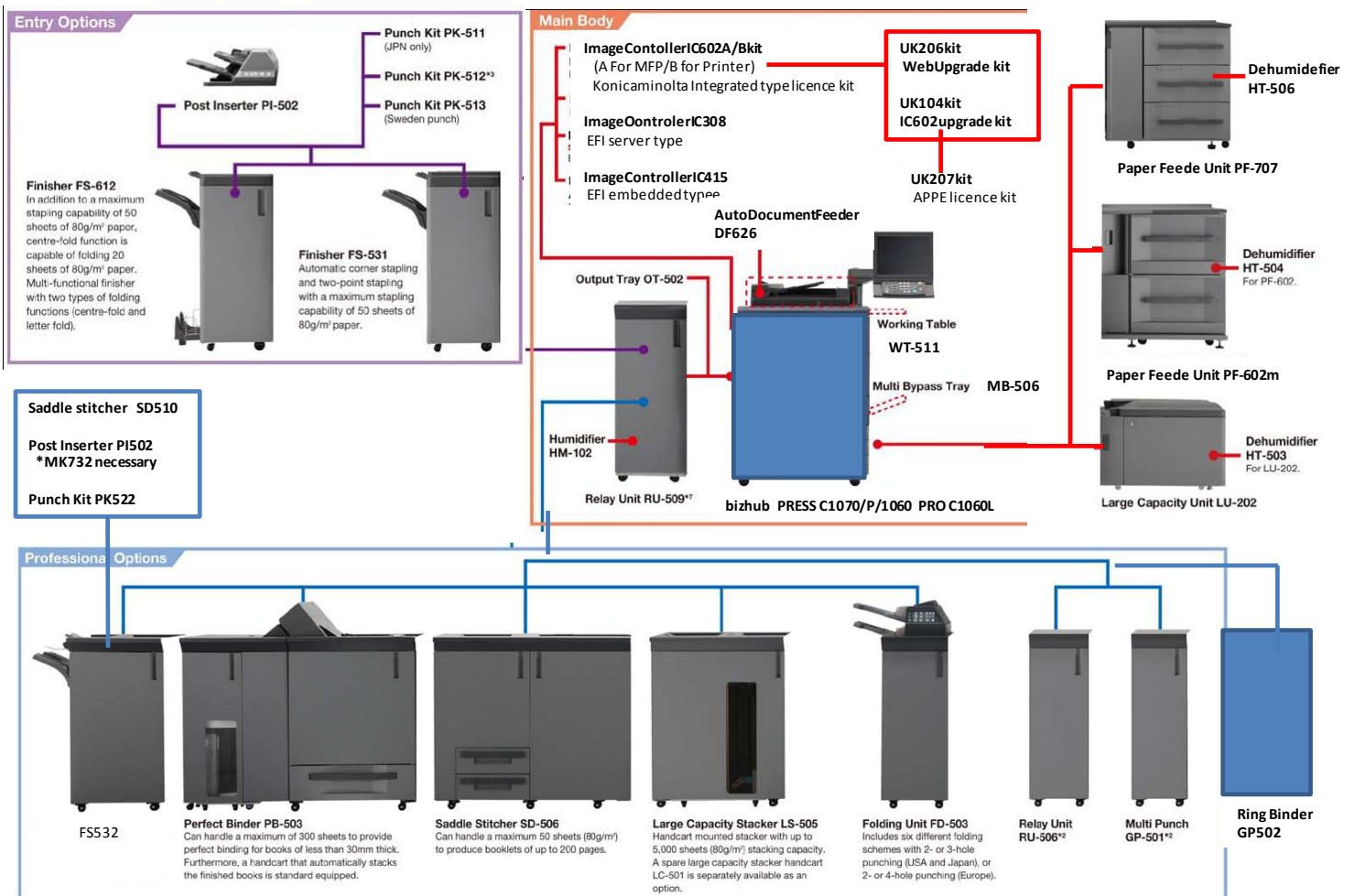
Category	Accessories	Additional accessories	Product name	Compatibility(Series)				Compatibility(Other product)					
				Degas1	Degas1P	Degas2	Degas2L	Chagal	Symphony(1/2)	Renoir	Gauguin(1/2)		
Scan/DF	DocumentFeeder		DF626	✓		✓	✓	Dedicated to C1070series					
	Original Cover		OC-509	✓		✓	✓						
MainBody	Working table		WT-511	✓	✓	✓	✓						
	Envelope fuser		EF103	✓	✓	✓	✓						
	Option heater(upper tray)		HT511	✓	✓	✓	✓						
Papar feeder	Multi bypass unit		MB-506	✓	✓	✓	✓						
	LCT	←	LU202	✓	✓	✓	✓					✓	
		Option heater	HT503	✓	✓	✓	✓					✓	
	Suction feeder	←	PF707	✓	✓	✓	✓		✓				
		Option heater (internal)	HT506	✓	✓	✓	✓		✓				
	Air assist feeder	←	PF602m	✓	✓	✓	✓		✓				
		Option heater	HT504	✓	✓	✓	✓					✓	
	Finisher	Output tray		OT502	✓	✓	✓	✓					
Entry AIO finisher (50sheets)		←	FS531	✓	✓	✓	✓				✓		
		post inserter	PI502m	✓	✓	✓	✓				✓		
Entry AIO finisher (Staple/saddle stich)		←	FS612	✓	✓	✓	✓				✓		
		punch kit	PK511	✓	✓	✓	✓				✓		
			PK512	✓	✓	✓	✓				✓		
			PK513	✓	✓	✓	✓				✓		
Professional AIO finisher		←	FS532	✓	✓	✓	✓	✓	✓				
		punch kit	PK522	✓	✓	✓	✓						
		Mount kit	MK732	✓	✓	✓	✓	✓	✓				
		Saddle sticher	SD510	✓	✓	✓	✓	✓	✓				
Folding unit			FD503	✓	✓	✓	✓			✓	✓		
Saddle sticher			SD506	✓	✓	✓	✓			✓	✓		
Multi fuction saddle sticher		←	SD513	✓	✓	✓	✓	✓	✓				
		Square folder	FD504	✓	✓	✓	✓						
		Two side trimer	TU503	✓	✓	✓	✓						
		Cutter creaser	CR101	✓	✓	✓	✓	✓	✓				
Large stacker			LS505	✓	✓	✓	✓	✓	✓	✓	✓		
Perfect binder			PB503	✓	✓	✓	✓	✓	✓	✓	✓		
Puncher		←	GP501	✓	✓	✓	✓	✓	✓	✓	✓		
	Relay unit	RU510	✓	✓	✓	✓	✓	✓	✓	✓			
Ring binder		GP502	✓	✓	✓	✓	✓	✓					
Relay unit	←	RU509m	✓	✓	✓	✓	✓	✓					
	Humidifier	HM102m	✓	✓	✓	✓			✓	✓			
Image Controller	Own Controller	IC601kit for MFP	IC602A	✓		✓	✓	Dedicated to C1070series					
		IC601kit forPRT	IC602B			✓							
		UpgradeKit	UK104	✓	✓	✓							
		WebKit(iOp)	UK206	✓	✓	✓	✓		✓				
		APPEKit(iOp)	UK207	✓	✓	✓	✓		✓				
	Fiery/Creo Controller	IC308Fiery		✓	✓	✓	✓						
		IC415(fiery)		✓	✓	✓	✓						
		Video IF for Fiery/Creo	VI507	✓	✓	✓	✓		✓				
Card authentication unit		AU201	✓	✓	✓	✓	✓		✓	✓	✓		

2)Consumables

Category	Accessory	Product name	Compatibility(Series)				Compatibility(Other product)					
			Degas1	Degas1P	Degas2	Degas2L	Chagal	Symphony(1/2)	Renoir	Gauguin(1/2)		
For main body	Developer	Cyan	DV614C					Dedicated to Degas				
		Magenta	DV614M	✓		✓	✓					
		Yellow	DV614Y									
		Black	DV614K									
	Drum Unit		DU105	✓	✓	✓						
			DU106				✓					
	Toner	Cyan	TN619C									
		Magenta	TN619M	✓		✓						
		Yellow	TN619Y									
		Black	TN619K				□					
		Cyan	TN620C									
		Magenta	TN620M									
Yellow		TN620Y				✓						
For finishers	Staple	MS-5C	✓	✓	✓	✓			✓	✓		
		SK601	✓	✓	✓	✓		✓	✓	✓		
		SK602	✓	✓	✓	✓				✓		
		SK703	✓	✓	✓	✓	✓	✓	✓	✓		
	Hotmelt glue	GC501	✓	✓	✓	✓	✓	✓	✓	✓		
Ring Bind		RB101	✓	✓	✓	✓	✓	✓				

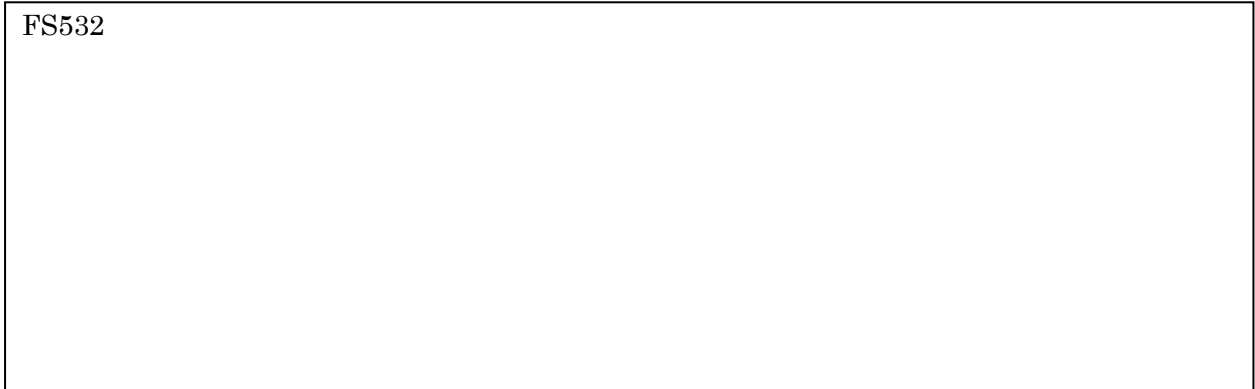


-Accessory configuration overview





-Accessory detail(Finishing)



**NEW FS-531**

stapling    Two holes\*1    Three holes\*2    Four holes\*2

Paper insertion\*3

\*1 PK-512 attached  
\*2 PK-512 attached  
(Availability will vary by area.)  
\*3 With the PI-502 attached



**Finisher (FS-531)**  
**with 50-sheet stapling function**

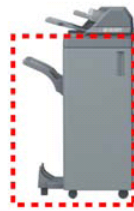
FS-531 offers automatic corner stapling and two-point stapling with a maximum stapling capability of 100 sheets of 80g/m<sup>2</sup> paper. It can switch between corner stapling and 2-point stapling. Hole punching and cover sheet insertions can be processed automatically by installing the punching kit and post inserter.

**FS-612**

Centre-fold    Letter fold-in    Saddle stitch    stapling    Two holes\*1

Three holes\*2    Four holes\*2    Paper insertion\*3

\*1 PK-512 attached  
\*2 PK-512 attached  
(Availability will vary by area.)  
\*3 With the PI-502 attached



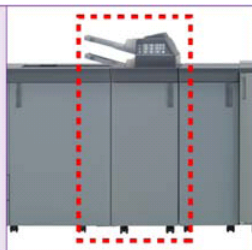
**Finisher (FS-612)**  
**with 80-page binding function**

In addition to a maximum stapling capability of 50 sheets of 80g/m<sup>2</sup> paper, FS-612's centre-fold function is capable of folding 20 sheets (80 pages) of 80g/m<sup>2</sup> paper. FS-612 is a multifunctional finisher with two types of folding functions (centre-fold and letter fold). Hole punching and cover sheet insertions can be processed automatically by installing the punching kit and post inserter.

**FD-503**

Centre-fold    Letter fold-in    Letter fold-out    Z-fold    Gatefold

Double-parallel    Two holes    Three holes    Four holes    Paper insertion



**Folding Unit (FD-503)**  
**with 6 different folding functions**

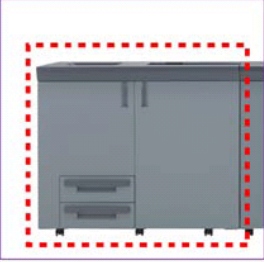
FD-503's folding functions include centre-fold, letter fold-in, letter fold-out, double parallel, Z-fold, and gatefold. In addition, 2- or 3-hole punching (for USA and Japan) or 2- or 4-hole punching (for Europe) functions with left or top position selections are also available. A paper insertion function is also available. FD-503 not only handles in-line processing, but manual processing of already-printed documents as well.



# DRAFT

**SD-506**

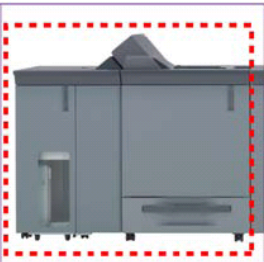
Multi-centre-fold    Multi-letter-fold    Saddle stitch    Trimming



**Saddle Stitcher unit (SD-506) with trimming function**  
 SD-506 handles a maximum of 50 sheets (80g/m<sup>2</sup>) to produce booklets of up to 200 pages. The saddle stitching (stitch after folding) method is highly accurate with minimal image shifts. Its trimming function trims the excess edges of paper on booklets with a large number of pages for a finer finish. Furthermore, multi-centre-fold and multi-letter-fold functions can fold up to 5 sheets of 80g/m<sup>2</sup> paper.

**PB-503**

Perfect binder



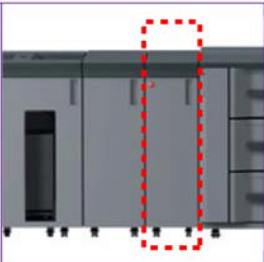
**Maximum of 600 pages for in-line perfect binding with Perfect Binder (PB-503)**  
 PB-503 handles a maximum of 300 sheets (600 pages) to provide perfect binding for books of less than 30mm thick. Printing and gluing can both be done in-line. Finely bound books can be produced without having to rely on three-way trimming. Furthermore, a handcart that automatically stacks the finished books is standard equipped.

**GP-501**

\*Optional die set is required.

[US] Letter size Punch Patterns (6 different styles)

[EU] A4 size Punch Patterns (10 different styles)



**Multi Punch unit (GP-501) for a variety of hole-punching styles**  
 With an exchangeable die set (punch marks), a variety of hole-punching styles are available for A4- and Letter-sized paper.

\* Not available in all areas.

GP502



2-10 Spec comparison

		<b>Degas1</b>	Gauguin1
<b>ImageQuality</b>	Granularity (Color)	$\geq > \text{Monet-e}$	$> \text{Monet-e}$
	Granularity (B/W)	$> \text{Monet-e}$	$\geq \text{Monet-e}$
	ColorReproduction	--	
	TextQuality (Color)	$\geq > \text{Monet-e}$	$> \text{Monet-e}$
	TextQuality (B/W)	$>> \text{Monet-e}$	$> \text{Monet-e}$
	TargetGamut	ISO coated	Japan color
	Grossiness	$> \text{Monet-e}$	=Monet-e
	Resolution	1200 x 1200 dpi (8bit)	1200 x 1200 dpi (8bit)
	Scanning method	4beam-Laser	8beam-Laser
	Toner	Simitri HD <sup>E</sup> (4thGen.)	Simitri HD(2ndGen.)
<b>Reliability</b>	ColorConsistency	$>> \text{Monet-e}$	$> \text{Monet-e}$
	ImagePositionAccuracy (Front-to-back resistration)	$X+3\sigma+3\sigma' \leq 1.0$ <b>ResistrationShift</b>	$X+3\sigma+3\sigma' \leq 1.0$ ScaningImageShift
	Anti-Fuser scrach	Yes(FuserShift)	No
	Output feedback(RU)	Densitometer(RGB/CMYK)	Densitometer(CMYK)
	DutyCycle	350k	330k
	DrumLife	640k	220k
	DeveloperLife	1260k(AutoRefreshing)	340k
<b>Productivity/PaperHandlin</b> g	PPM (PlainPaper)	70ppm/64~176gsm 51ppm/176~209gsm	70ppm/64~105gsm
	PPM (CoatedPaper)	70ppm/64~176gsm 51ppm/176~209gsm	70ppm/64~105gsm
	AutoDuplex	300gsm (Support)	300gsm (Limited Support)
	MaxPrintableArea	323 x 480mm	321 x 480mm
	SuctionPF	Yes (TBD)	No
	EnvelopePrint	Support	PartsSupply
<b>Ease of use</b>	Max Paper Sources(MB/wPF)	2/5	3/5
	OparationPanelSize	15inch	15inch
	PC like oparation(w Mouse)	Yes	No
	User's manual on Op panel	Yes	No
	TC Life(YMC)	50k	31k
	TC Life(K)	40k	41.5k
	MaxPaperCapacity	7500sheets	7500sheets
	PurgeTray	No	No
	CallLight	Option	Option
	TrayIndicator	No	No
	Dimensions (W*D*H:mm)	W760*D777*H1040	W760*D993*H1041
Scalability(OfficeSolution)	Yes(Partial)	No	





2-11 Differentiation of PRESS C1070/1060 vs PRO C1060L

		Degas1(1P)	Degas2	Degas2L
Specification	Name(Brand)	bizhubPRESS C1070(P)	bizhubPRESS C1060	bizhubPRO C1060L
	CPU	Core-i5	Pentium(DualCore)	Pentium(DualCore)
	Encryption function	Hardware	Software(multi job NG)	Software(multi job NG)
	Remote panel 2	Yes(TBD)	No	No
	Maximum ppm	70	60	60
	Feeder	PF707/PF602m/LU/MB	PF707/PF602m/LU/MB	LU/MB
	RU(Output Feed back)	Yes	Yes	No
	Finisher	All Pro configuration	All Pro configuration	Only entry configuration
	Image controllers	IC602/IC415 IC308	IC602/IC415 IC308	IC602(no upgrade) IC415
	IC602 UPG scalability	Yes(UPG/APPE)	Yes(UPG/APPE)	No
	Envelope support	Yes	Yes	No (Only PF707 supports envelope)
	Consumables	TN619CMYK / DU105		TN620CMYK / DU106
Positioning and competition	Target customer	CP/CRD/PFP (MID size)	CP/CRD/PFP (Small~MID size)	CP/CRD/PFP & Office (Small~MID size)
	Paper Usage	Mostly Large coated paper	Both L/S and Coated/Plain	Mostly A4/Letter plain paper
	Replacing MIF	Monet/-e	Monet/-e/55	CCP/CCPm/Monet55/Monet-e55
	Assumed average monthly print volume	Clr: 40000p B/W: 15000p Color ratio 73%	Clr: 24000p B/W: 9000p Color ratio 73%	Clr: 15000p B/W: 6000p Color ratio 71%
	Competitors	Xerox700iDCP/(770DCP) RicohProC751EX	RicohPro C651EX Xerox700iDCP	XeroxColor550/560 iRAdvancePRO C9075
Key concept	High performance and scalable model come close to Mid PP with affordableTCO	Balanced model for performance and affordability with scalability	The most affordable model as HW with least scalability but slightly higher running cost <small>In case of recommended MPV the most affordable and appropriate model</small>	



2-12 Differentiation of PRO C1060L vs C754

		PRO C1060L	C754
Production feature	Paper handlings	Coated paper	Support
		Maximum size	330 × 487.7 (13 × 19.2)
		Maximum printable area	323 × 480
		Paper feeding	Air assist with LU202/PF602m
	Image quality	Print resolution	1200 × 1200dpi (8bit)
		Color reproduction	FOGRA certified
		Granularity	Very good
		Color management	Available
	Productivity	Screen	Dot/FM
		ppm(color/mono)	60/60
		Rated speed up to (plain paper)	64~175gsm
		Rated speed up to (coated paper)	81~175gsm
		CPU(KM IC)	Pentium
	Reliability	CPU(Fiery)	Pentium
		Color stability	Specified
		Front to back registration	±1.0mm
	Ease of use	DutyCycle	300k
		Operation display size/type	15inch/Free arm
MakeReady (Preview)		RIPed OK (own)	
	Mouse operation	OK	

		PRO C1060L	C754
Office feature	Scalability	Open API	Support
		FAX	Available
		Scan speed	70 ipm color 300dpi
		Power supply	208-240 V, 21 A
	Operability	Multi touch	n/a
		Foot print	≒ W760*D800*H1040
		weight	≒300kg
			DS /90opm/90opm Duplex180opm
		120V 16A	
		Available	
		W650 × D822 × H1155	
		221kg	



KONICA MINOLTA

2-13 Notification

**DRAFT**