

Ka Shue (Letters Home)

Technical Rider

As created for the TAHI Festival 2020
On the Random Stage, BATS Theatre

AUDIENCE CAPACITY: this play is ideal for black box, studio theatres with standard block seating, capacity from 86 to 200-seater

Please note: Ka Shue (Letters Home) contains some coarse language. Suitable for general audience, secondary schools.

TRANSPORT/TRAVEL COSTS to ARTS FESTIVALS across NZ:

1 x hire VAN to transport three people, the set/props and luggage from Wellington – return. Petrol/Mileage/or electric vehicle charging.

Accommodation x 3

Per Diems x 3

Contingencies

Travel Insurance

Approximate cost for 3-5-night NZ Arts Festival season \$6,000 (+GST)

TOURING SET/COSTUMES/PROPS

Small ramp (1m width x 1.3m length x 30 cm height)

Suspended red drop cloth (1m x 5m drop)

Suspended headpiece

Suspended mask

2 x black plinths (1.3m height x 30cm square)

1 x small wooden chest containing props

2 x wooden chairs

1 x stool (for musician)

Musician needs: 1 x small table at venue, microphone, lighting.

TECHNICAL SPECS:

Sound equipment:

- 2 x IQ10 Speakers
- 1 x IQ18 Sub
- A sound mixer: e.g. **Behringer X32** Compact mixing desk.
- Macbook Laptop to play qlab file.

Macintosh computer with QLab software
PA/mixer for Stereo playback

Musician's microphone. Shure SM57 at Bats was ideal; SM58 would also work - both common mics, and reasonable substitutes also acceptable. Which means mixer capacity for a minimum of 3 input channels -> 2 output.

The Random has 2 x IQ10 Speakers.

The Random has a **Behringer X32** Compact mixing desk.

The Random has a **Behringer S16** digital snake.

The Random has a **Behringer P16-D ULTRANET** Distributor

There is a show computer with Qlab 2 on it.

The desk is laptop/iPod capable.

Lighting design:

12x pl1 Fresnel's LED

- 6 FRONT WASH: (to show span of stage)
- 6 SIDE LIGHT: (to colour support to change character / stage mood)

4x pl1 profiles

- STAGE LEFT SPOT: used for character in chair spot
- STAGE RIGHT SPOT: used for character in chair spot
- STAGE CENTER SPOT: used for character in risen stage as well as blue light
- STAGE CENTER SPOT: fix as blue light and with gobo on venetian blinds effect

2x 500W mini-Fresnel's

- 2 MINI'S TURTALS: shine on the draping set
- RED GELS

3x SL350 Intel movers

- 2 SIDE: support colour change when character changes
- 1 TOP DOWN: musician (colour purple/Blue)

Lighting State:

1. **Ghost:** Red side and back light, cold front wash 90%
 2. **Abby:** orange side and back light, warm front wash 70%
 3. **Paw Paw:** Dimmed lighting, soft yellow lighting mood to lamp lighting 60%
 4. **Gung Gung:** Gold side and back light, Strong bright front wash 100%
 5. **Jackie:** Soft side and back light, small hue as front light. 70%
 6. **Water scenes:** Blue spot 80%, dimmed scene before light to 50%
 7. **Sun Scenes:** Yellow spot 80%, dimmed scene before light to 50%
 8. **Musician light:** blue, purple spot down light in Stage left corner 20%
- (ether single fader on preset for every cue/ scene)

Lighting equipment:

- A manual lighting board e.g. LSC MAXIM
- Or a programed lighting console.: Strand NEO

PACK-IN TIME

Pack-in time will involve one day (8 hours) from 9am until 5pm the day before the show, to co-ordinate with venue House Tech on site to cover any eventualities and to assist with Ka Shue production's technical requirements.

HAZARDS

Safety hazards are always a factor in theatrical productions. Our Tech Operator/Production Manager Bekky Boyce would co-ordinate your venue Risk Assessment document with our team.

PACK IN: Up to 1 day (Festivals), or 8 hours, the day before the show, after H&S brief and Tour of the Building and Venue, set and props carry into venue. Our Technical Pack In (Rigging, Focusing, Patching, Plotting, Sound Install etc) can be done within 8 hours.

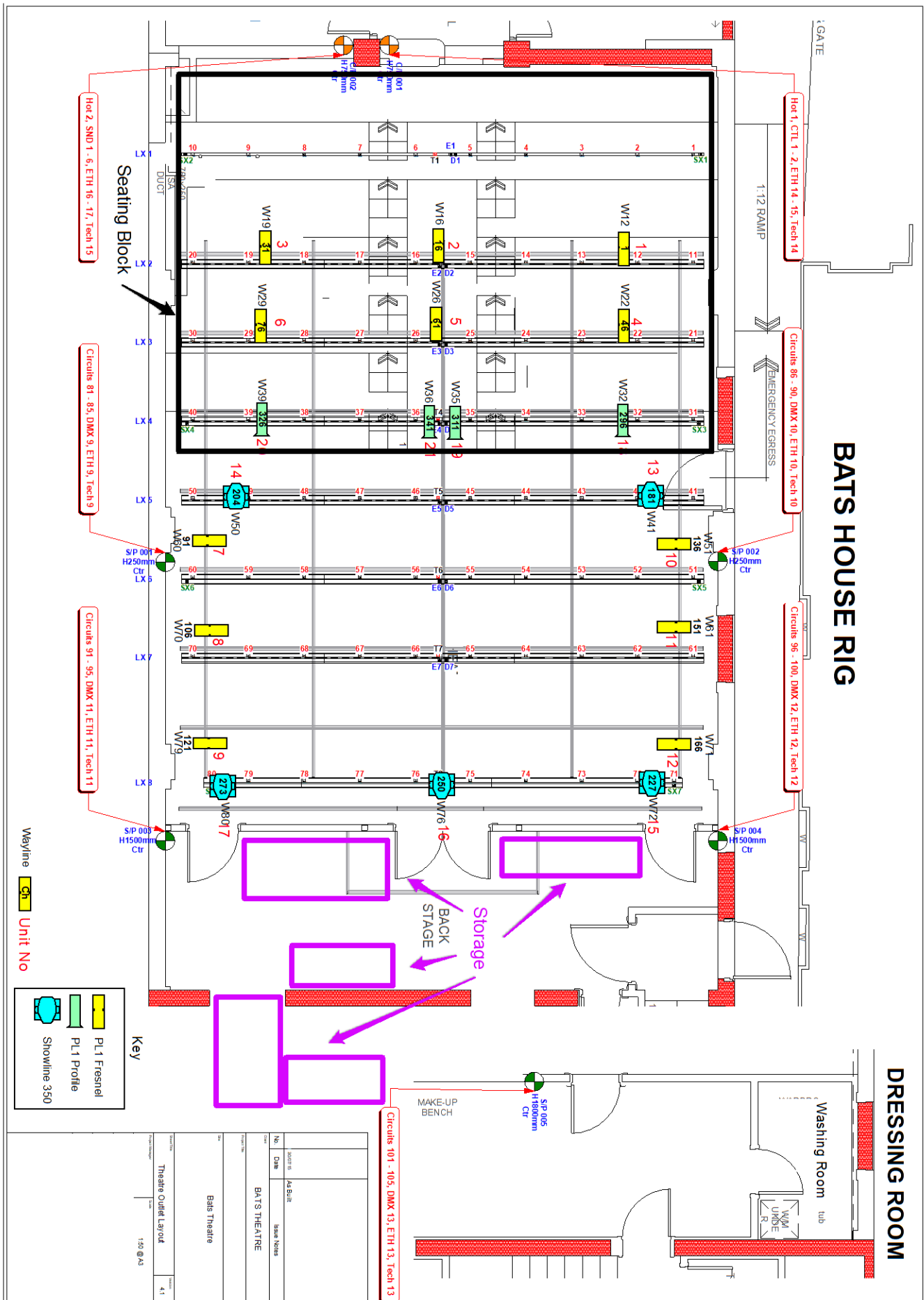
PACK OUT: Pack out is usually about 60 – 90 mins.

SEATING ARRANGEMENT:

This play is ideal for standard tiered block seating rostra arrangement but will also work with traverse or L-shaped audience seating arrangements. Configuration seating between 86 to 250-seater maximum.

Wheelchair access available.

Stage LX Plan (BATS THEATRE, RANDOM STAGE – FOR TAHI FESTIVAL , 2020)





LX State for Abbie character and Ka Shue Set and props, TAHI Festival 2020 – Photo by Dianna Thomson.



LX State for Ka Shue Ghost character – Photo by Dianna Thomson



LX state for Ghost and Musician's table stage left, with stool, microphone, guitar stand. Ka Shue (Letters Home) at the TAHI Festival, 2020. Photo Dianna Thomson.