

Introduction to the System for Award Management (SAM)



Corps of Engineers Dredging & Small Business
Conference

October 23-24, 2012



Outline

- What is SAM?
- Why SAM?
- DSBS and related changes.
- What is different for the typical user?
- What you need to do now.
- DEMO – Using SAM
- DEMO – Using DSBS

What is SAM?

- The System for Award Management (SAM) is a single data base that replaces nine existing Federal contracting data bases.

- **Siloed** – Separate systems, each with a separate login
- **Redundant** – Overlapping data
- **Separate** – Various hosting locations, managed separately



What Does It Look Like?

- SAM is not an application – it's a system.

- ▶ **I Login!** – Functionality accessible at one online location to streamline the process
- ▶ **I Data Source!** – Centralized, normalized data to eliminate potential for conflicting values
- ▶ **I Host!** – Consolidated hosting to reduce O&M costs



Existing capabilities, streamlined for efficiency.

What is in SAM?

Functional Area	Capabilities	Legacy Systems
Entity Management	<ul style="list-style-type: none"> • Manage entity core data • Manage certifications/representations 	<ul style="list-style-type: none"> • CCR/FedReg – Central Contractor Registration • ORCA – Online Representations and Certifications Application
Award Management	<ul style="list-style-type: none"> • Post solicitation and award data • Maintain government-wide contract award data • Manage government-wide subcontractor data 	<ul style="list-style-type: none"> • FBO – Federal Business Opportunities • FPDS-NG – Federal Procurement Data System-Next Generation • eSRS/FSRS – Electronic Subcontracting Reporting System
Wage Data	<ul style="list-style-type: none"> • Access wage determinations 	<ul style="list-style-type: none"> • WDOL – Wage Determination Online
Performance Information	<ul style="list-style-type: none"> • Manage/maintain past performance information • Manage exclusion list 	<ul style="list-style-type: none"> • PPIRS/CPARS – Past Performance Information Retrieval System • EPLS – Excluded Parties List System
Assistance Program Catalog	<ul style="list-style-type: none"> • Create/maintain assistance program catalog 	<ul style="list-style-type: none"> • CFDA – Catalog of Federal Domestic Assistance
Support	<ul style="list-style-type: none"> • Provide security/access control • Provide reporting/communications support • Provide internal controls 	

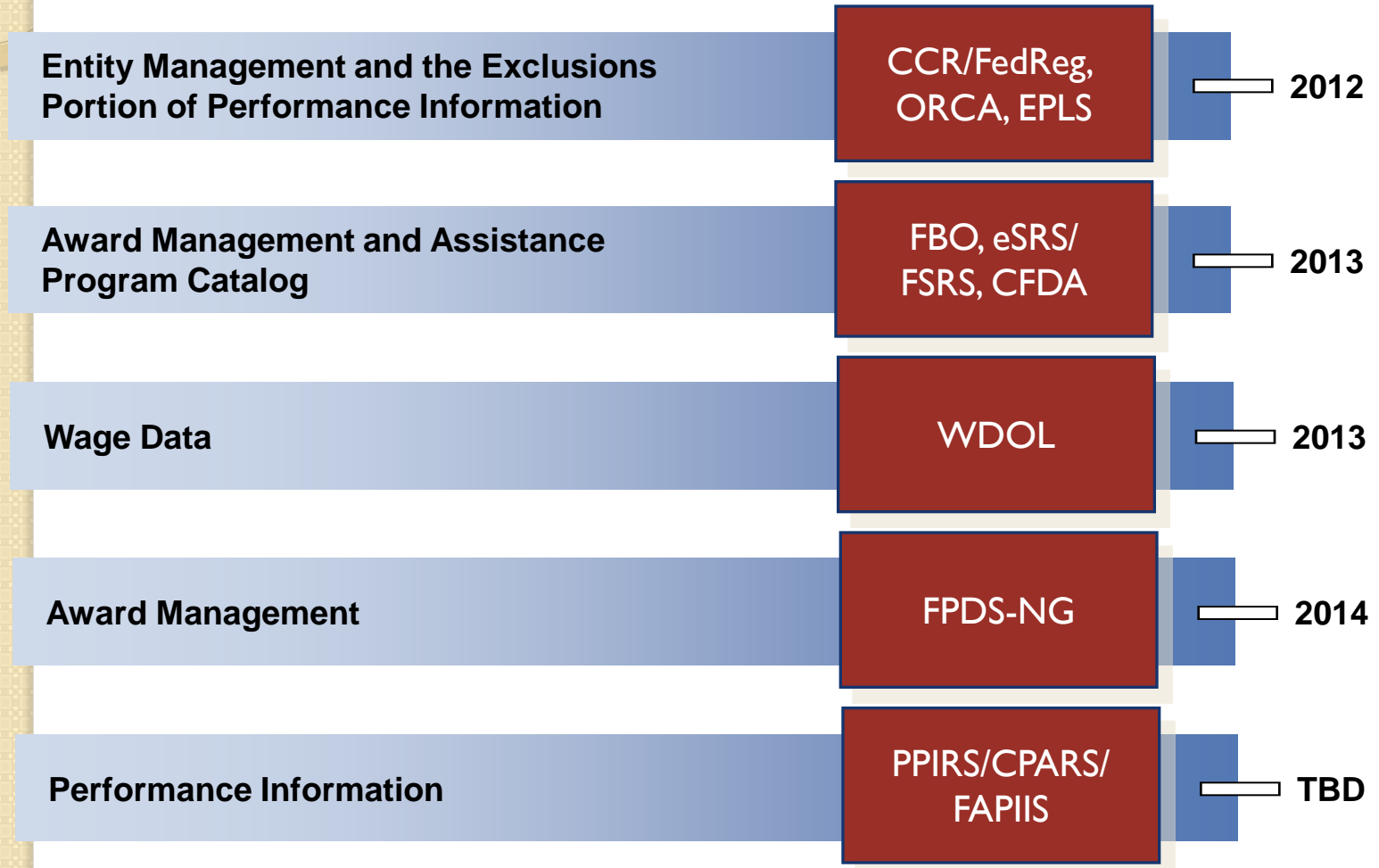
Why SAM?

- Siloed systems
 - Multiple logins—inefficient and confusing
 - Data overlap among systems—inefficient and creates opportunity for error



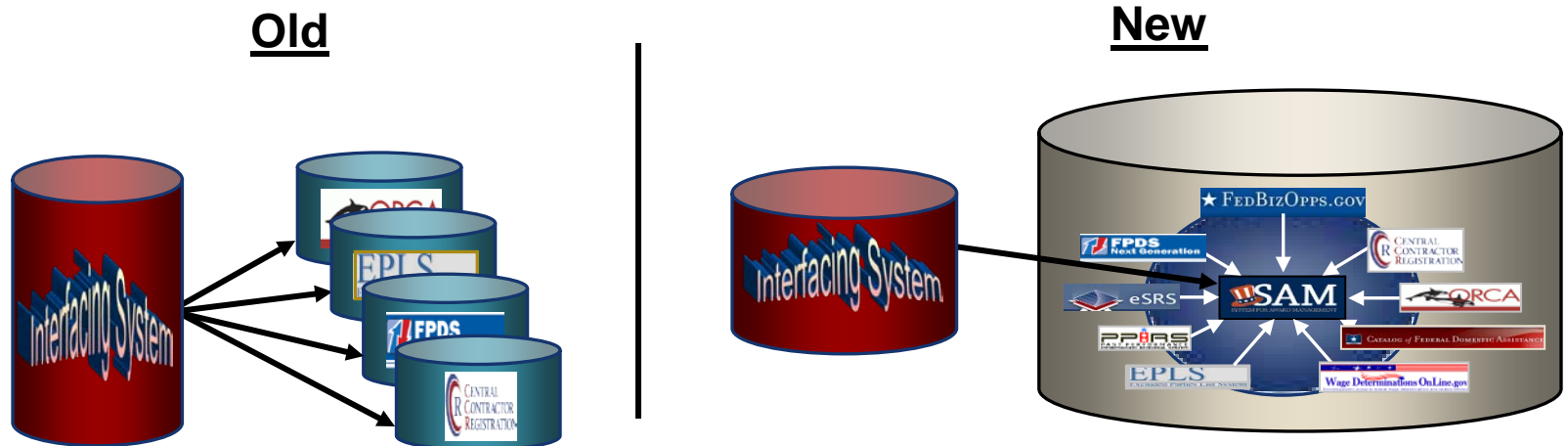
- Separate hosting, management, and support
 - Various standards and service level agreements—may yield varying levels of service
 - Multiple hosting vendors—more expensive than consolidated hosting

SAM Schedule



Has DSBS Changed?

- No – the SAM system feeds DSBS the way that CCR did and there is a link in SAM to update your DSBS just like the link in CCR.
- http://dsbs.sba.gov/dsbs/search/dsp_dsbs.cfm



What is different for the user?

- Users will be automatically redirected from the legacy systems to SAM.
- Users will create a new account with a user ID and password – usually the same one you had in CCR.
- The system will guide them through the process when they log in with their old user name.

What A Firm Needs To Do Now

- If you had an active record in CCR, you have an active record in SAM. You do not need to do anything in SAM at this time, unless a change in your business circumstances requires a change in SAM in order for you to be paid or to receive an award.
- SAM will send notifications to the registered user via email 60, 30, and 15 days prior to expiration of the record.
- You can search for registered entities in SAM by typing the DUNS number or business name into the search box.

Questions???

Valerie J. Coleman

Procurement Center/Commercial Market
Representative

U. S. Small Business Administration
Office of Government Contracting
2101 NASA Parkway, MC: BD35
Houston, TX 77058

281-483-1549 fax: 281-483-4326

valerie.j.coleman@nasa.gov

valerie.coleman@sba.gov