



INFRASTRUCTURE



POWER

WATER



OIL & GAS



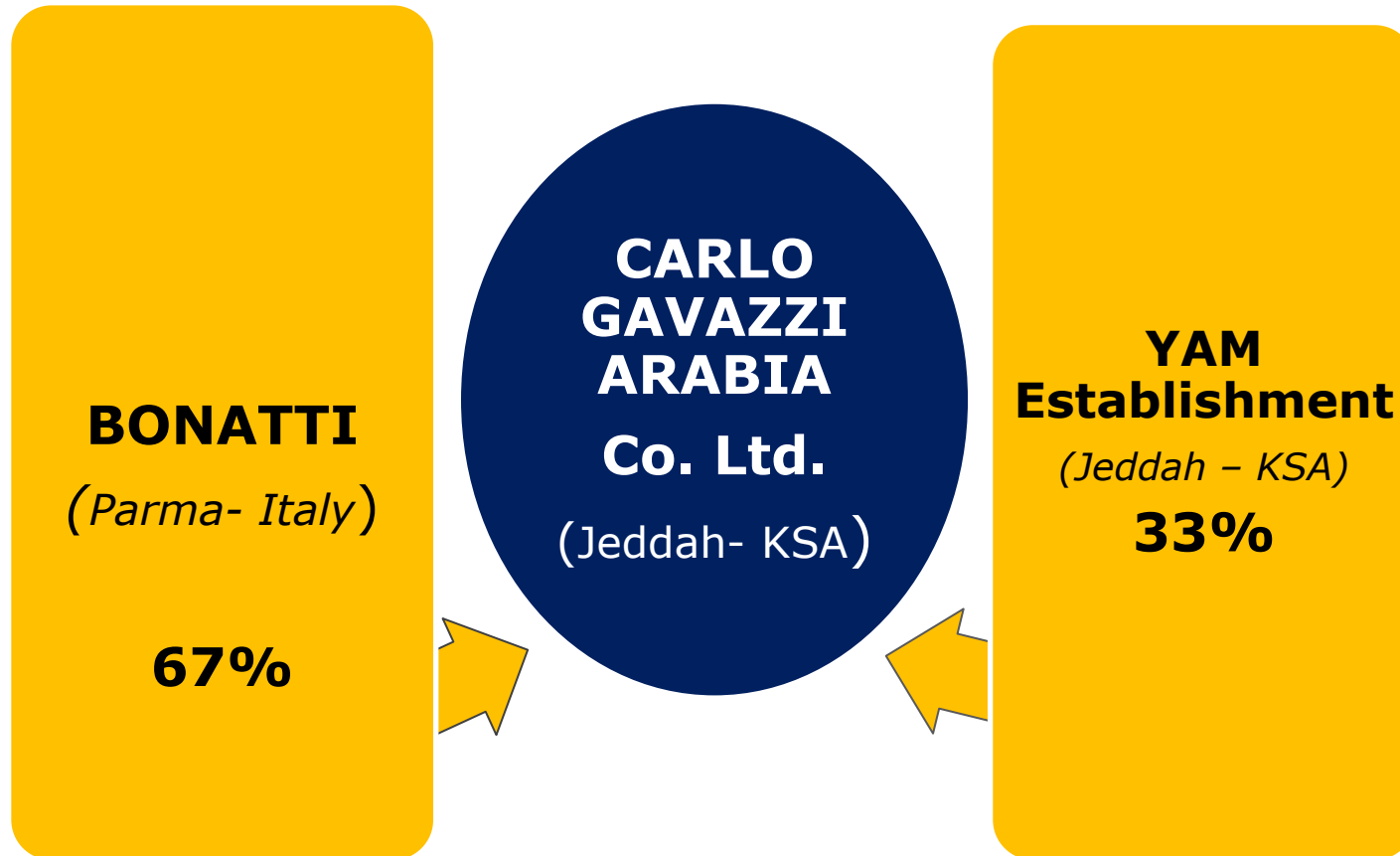
IMS CERTIFIED COMPANY
(ISO9001, ISO14001 & OHSAS18001 standard)



Company Profile
35 years of continued presence in Saudi Arabia



- 1931** On 10th. December Mr. Carlo Gavazzi registers the individual proprietorship in Milan, Italy.
- 1982** Established in **Saudi Arabia** as **Carlo Gavazzi Yam Co. Ltd.** under the Sponsorship of the Yam Establishment for Business in the field of Electrical and Instrumentation.
- 2000** Name is changed from Carlo Gavazzi Yam Co. Ltd, to **CARLO GAVAZZI ARABIA Co. Ltd.**
- 2012** **BONATTI S.p.A.** of Italy acquires 100% of CARLO GAVAZZI IMPIANTI's shares of Carlo Gavazzi Arabia Co. Ltd.





Know How &
Experience

Flexibility &
Competitiveness

Reliability &
Efficiency



ISO CERTIFICATION

SGS

Certificate 54382040

The management system of
Carlo Gavazzi Arabia Co. Ltd.
 No. 85 Mohd. Al-Ahmar St., Arakha Dist., P.O. Box 15291,
 Jeddah, 21444, Saudi Arabia



has been assessed and certified as meeting the requirements of
ISO 9001:2015

For the following activities:
**Engineering contractor for engineering designs, supply of materials,
 installation, operation & maintenance, pre commissioning and
 commissioning for electrical, instrumentation and mechanical works.**

Further clarifications regarding the scope of this certificate and the suitability of
 ISO 9001:2015 requirements may be obtained by contacting the organization.

This certificate is valid from 3 January 2017 until 31 January 2020
 and remains valid subject to satisfactory surveillance audits.
 Re-certification audit due before 31 October 2019
 Issue 5. Certified since 8 December 2015.

Authorized by:




SGS Société Générale de Surveillance SA
 Technoparc 1 - 202, Zaire, Salazarine
 CH-2000 GENEVE 14, Suisse
 T +41 (0)43 40 04 00 F +41 (0)43 40 04 10 www.sgs.com



The document issued by the Certifying Institute is the result of a certification process. It is the responsibility of the organization to maintain the certification and to provide the necessary resources to ensure the certification is valid. The certifying body is not responsible for the actions of the organization. The organization must ensure that the certification is valid and that the certification is maintained. The organization must ensure that the certification is valid and that the certification is maintained.

SGS

Certificate CH110158

The management system of
Carlo Gavazzi Arabia Co. Ltd.
 No. 85 Mohd. Al-Ahmar St., Arakha Dist., P.O. Box 15291,
 Jeddah, 21444, Saudi Arabia



has been assessed and certified as meeting the requirements of
ISO 14001:2015

For the following activities:
**Engineering Contractor for Engineering design, Supply of materials,
 Installation, Operation & Maintenance, Pre commissioning and
 Commissioning for Electrical, Instrumentation and Mechanical works.**

This certificate is valid from 1 February 2017 until 31 January 2020
 and remains valid subject to satisfactory surveillance audits.
 Re-certification audit due before 19 January 2020
 Issue 3. Certified since February 2011.

Authorized by:




SGS Société Générale de Surveillance SA
 Technoparc 1 - 202, Zaire, Salazarine
 CH-2000 GENEVE 14, Suisse
 T +41 (0)43 40 04 00 F +41 (0)43 40 04 10 www.sgs.com



The document issued by the Certifying Institute is the result of a certification process. It is the responsibility of the organization to maintain the certification and to provide the necessary resources to ensure the certification is valid. The certifying body is not responsible for the actions of the organization. The organization must ensure that the certification is valid and that the certification is maintained. The organization must ensure that the certification is valid and that the certification is maintained.

SGS

Certificate CH110158

The management system of
Carlo Gavazzi Arabia Co. Ltd.
 No. 85 Mohd. Al-Ahmar St., Arakha Dist., P.O. Box 15291,
 Jeddah, 21444, Saudi Arabia



has been assessed and certified as meeting the requirements of
OHSAS 18001:2007

For the following activities:
**Engineering Contractor for Engineering design, Supply of materials,
 Installation, Operation & Maintenance, Pre commissioning and
 Commissioning for Electrical, Instrumentation and Mechanical works.**

This certificate is valid from 1 February 2017 until 31 January 2020
 and remains valid subject to satisfactory surveillance audits.
 Re-certification audit due before 19 January 2020
 Issue 3. Certified since February 2011.

Authorized by:




SGS Société Générale de Surveillance SA
 Technoparc 1 - 202, Zaire, Salazarine
 CH-2000 GENEVE 14, Suisse
 T +41 (0)43 40 04 00 F +41 (0)43 40 04 10 www.sgs.com



The document issued by the Certifying Institute is the result of a certification process. It is the responsibility of the organization to maintain the certification and to provide the necessary resources to ensure the certification is valid. The certifying body is not responsible for the actions of the organization. The organization must ensure that the certification is valid and that the certification is maintained. The organization must ensure that the certification is valid and that the certification is maintained.

KEY CONTACTS

- **MANAGING DIRECTOR**

- Mr. Maurizio BERTAZZO Cell. Phone + 966 (0) 505671444
mbertazzo@carlogavazziarabia.com

- **OPERATION MANAGER**

- Mr. Carlo Ferrari Cell. Phone + 966 (0) 539492123
carlo.ferrari@carlogavazziarabia.com

- **PROPOSAL & ESTIMATION MANAGER**

- Mr. Benny T. John. Phone + 966 (0) 502648064
benny@carlogavazziarabia.com

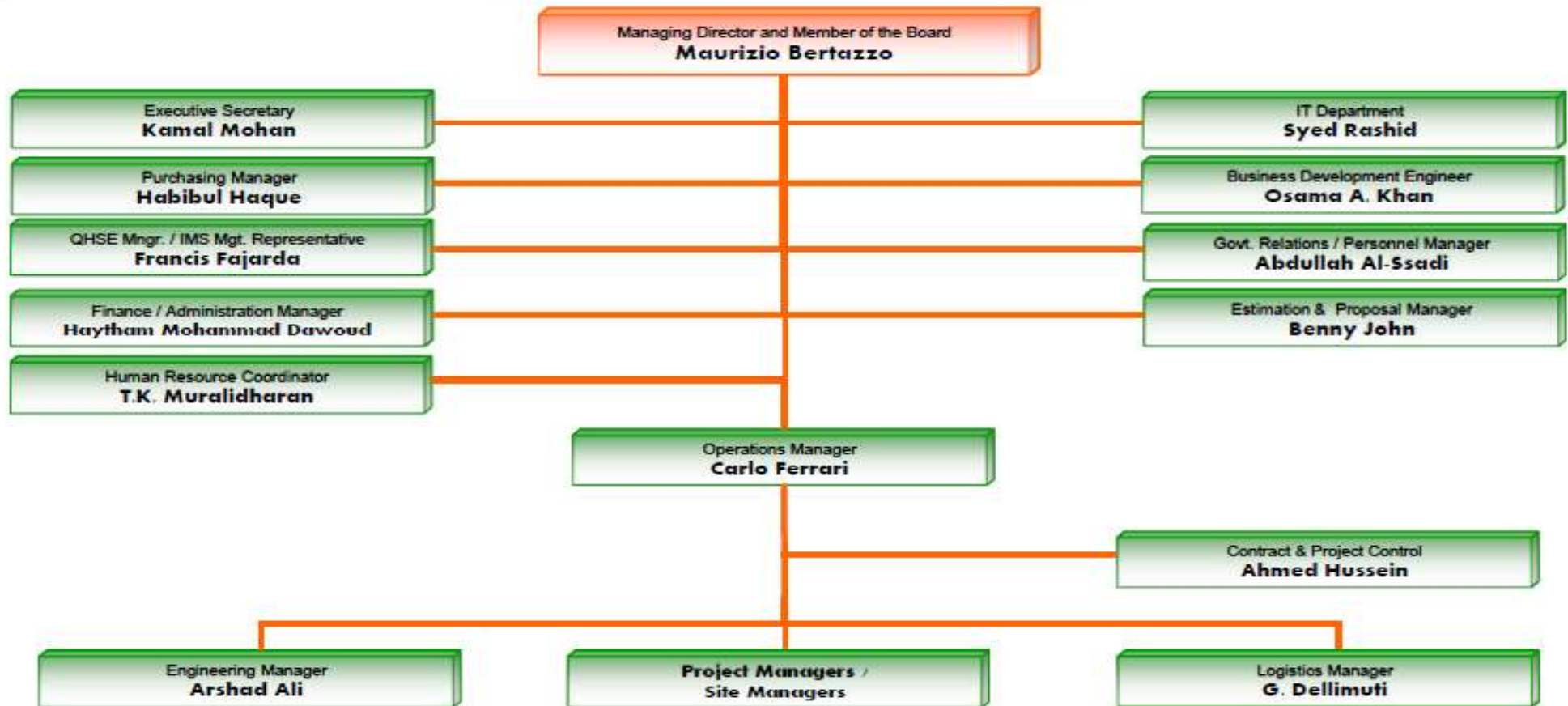
- **BUSINESS DEVELOPMENT ENGINEER**

- Mr. Osama A. Khan Cell. Phone + 966 (0) 545551248
osama.khan@carlogavazziarabia.com



ORGANIZATION

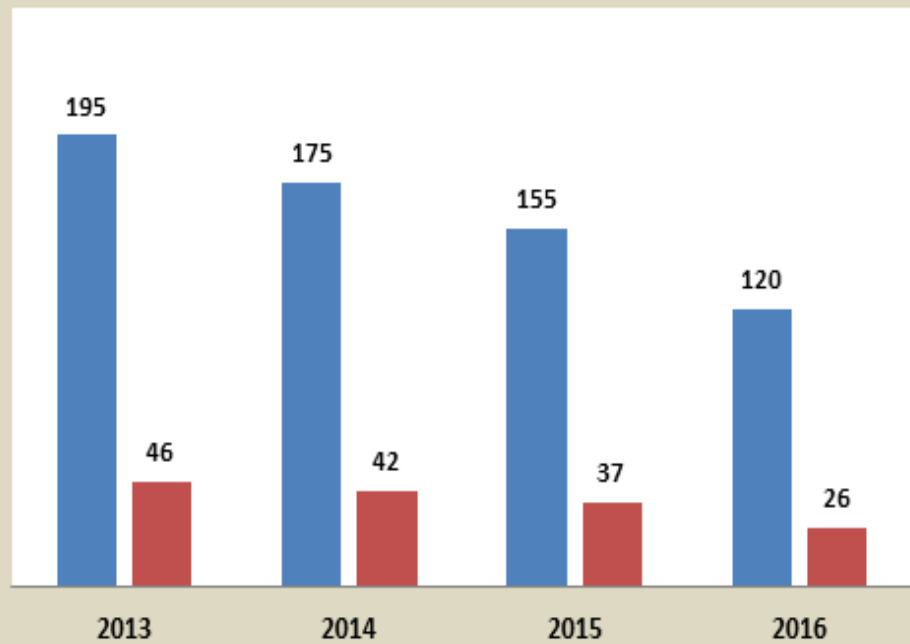
COMPANY ORGANIZATION / MANAGEMENT



MAIN ECONOMIC DATA

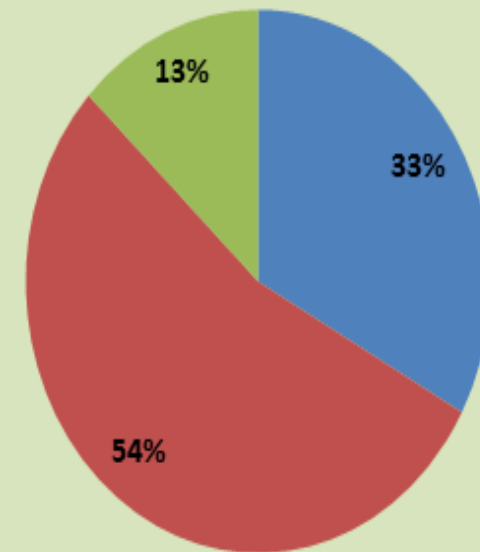
Turnover

■ M. SAR ■ M. EUR



INDUSTRIES

■ Oil & Gas ■ Power ■ Infrastructure



OUR IN HOUSE CAPABILITY IN EXECUTING TURN KEY PROJECTS



- **CORE BUSINESS:** Electrical, Instrumentation, Control Systems
- **ACTIVITY:** Erection, Construction, Installation, Pre-Commissioning Procurement, Detail Engineering, Revamping & Upgrading, Testing, Pre-commissioning, Assistance to commissioning
- **INDUSTRIES :**
 - Power Plants & Substations
 - Oil & Gas, GOSPs, Petrochemical Plants
 - Steel Plants
 - Water Treatment & Desalination Plants
 - Railways systems
 - Pharmaceutical Plants, Hospitals

*when needed with the support by
CARLO GAVAZZI IMPIANTI or BONATTI S.p.A.*

- Detail Engineering
- Procurement
- Erection
- Testing, Pre-commissioning & Commissioning

OF:

- HV – MV – LV Substations & Power plants
- Small Power & Lighting (incl. design & engineering)
- System Integration
- Railways signaling systems
- Shut down & Hot cut over activity
- Fire Detection & Alarm System
- CCTV, Paging System, Telecom

ELECTRICAL CAPABILITIES



ELECTRICAL

- HV, MV & LV Transformers Installation & Pre-commissioning (All Ratings, Excitation, Isolation, Neutral Grounding Unit Auxiliary, Generator Step-up up to 500MVA)
- Iso Phase Bus Duct (IPB), Non-Segregated Bus Duct (NSB), GIB (132kV & 380kV)
- Generator Installation & Pre-commissioning (All Ratings)
- Switchgears & Switchboards (MV & LV)
- Panel Installation (Electrical, Control & Instrumentation)
- UPS / DC systems
- Cable Pulling (HV, MV & LV)
- Cable Terminations (MV & LV)
- Cable Tray, Conduit and Raceways Power (third rail)
- Fiber Optic Cable splicing & terminations
- Certified aluminum welders
- FO / MV cable splicers (up to 33 kV)

INSTRUMENTATION CAPABILITIES



INSTRUMENTATION

- Instrument calibration
- Instrument Installation (Field)
- Loop Test
- Instrumentation Construction Services
- Installation of Transmitters, Switches & Gauges for Pressure, Temperature Flow and Level application, Control Valves, on / off valves, Breather valves, Safety Valves, panels, junction boxes, cable laying & termination, perforated cable tray work, pedestal fabrication
- Installation of process installation, termination & commissioning of indicators, transmitters and controllers & other field instruments
- Installation including cabling, marshalling panels, instrument air/gas tubing and impulse piping
- Ability to pre-fabricate instrument support & other fabrication work for control packages
- Supply of skilled manpower including Engineers, Technicians for shut down maintenance, installation and commissioning activities.

AUTOMATION CAPABILITIES



AUTOMATION

- Process Control Systems
- Safety Instrumented Systems
- Fire & Gas (F&G) Systems
- Condition Monitoring Systems (CMS)
- Power Management Systems
- Instrument Asset Management Systems (IAMS)
- Industrial Data Networks Communication Systems & PAGA Systems
- Security: CCTV, Anti-Intrusion Systems
- Process Historian - Plant Information Management System (PIMS)
- Preventive Maintenance
- Breakdown Maintenance
- Reliability Centered Maintenance
- Condition-Based Monitoring
- Start-Up / Shutdown Services
- Reporting & Analyses
- Maintenance Management & Planning Services

PRE-COMMISSIONING CAPABILITIES



E&I PRE-COMMISSIONING ACTIVITIES

- Startup & Commissioning Services
- Motor Control Centers (MCC)
- Generator Circuit Breaker (GCB)
- Switchgears (LV & MV), including relay setting
- Control & Protection panel
- Transformers (Distribution, Excitation, Isolation, Neutral Grounding, UAT, GSUT) incl. oil filtration
- Generators (Diesel, Emergency Diesel Generators)
- DC Battery/ UPS System
- Electrical Motors
- Instrumentation loop checking, Startup & Commissioning Services
- Calibration of Instruments

BUILDING WITH PEOPLE



Saudization as per Royal Decree 50
NITAQAT Status: **GREEN**

1	HEAD OFFICE & SITE MANAGEMENT & ADMIN	94
2	ENGINEERS	35
3	SUPERINTENDENT	23
4	SUPERVISOR - ELECT/INST/MECH	41
5	HSE ENGR / SUPERVISOR /OFFICER	34
6	QA/QC SUPERVISOR / INSPECTOR	24
7	QTY. SURVEYORS	4
8	MATERIAL MAN /STOREKEEPER	11
9	FOREMEN	133
10	TECHNICIANS & SKILLED	549
11	DRIVER /HEAVY EQUIP./MECHANIC	73
12	SEMI-SKILLED / UNSKILLED	192
	TOTAL AS OF NOVEMBER-2017 (CGA)	1213
	OUTSOURCED	473
	GRAND TOTAL	1686
Note: Outsourced personnel may vary according to the workload		

BUILDING WITH PEOPLE

MANPOWER RESOURCES						
SUMMARY - CATEGORY	QTY:	1 TO 4(YRS)	5 TO 9(YRS)	10 TO 15YRS	16 AND ABOVE(YRS)	QTY
HEAD OFFICE/SITE MANAGEMENT & ADMIN	94	29	32	20	13	94
ENGINEER	35	16	12	7	0	35
SUPERINTENDENT	23	4	10	2	7	23
SUPERVISOR - ELECT/INST/MECH	41	6	26	4	5	41
HSE ENGR/SUPERVISOR/OFFICER	34	19	11	4	0	34
QA/QC	24	9	7	8	0	24
QTY. SURVEYORS	4	1	3	0	0	4
MATERIAL/STOREKEEPER	11	4	5	2	0	11
FOREMAN	133	26	56	35	16	133
SKILLED	549	327	111	105	6	549
DRIVER/HEAVY EQUIP./MECHANIC	73	23	27	17	6	73
SEMI-SKILLED/UNSKILLED	192	165	16	10	1	192
TOTAL	1213	629	316	214	54	1213

CONSTRUCTION EQUIPMENT & ASSETS

DESCRIPTION	QUANTITY
Mobile Crane 30/50 tons	7
Forklift	15
Man-lift	4
Air compressors	14
Boom Trucks	10
Low Bed Trucks/Heavy Duty Truck	7
Bus/Coaster	30
Ambulance	4
Pick-up car	50
Diesel generator <100KVA	28
Diesel generator >100KVA	24
Welding machine	49
Portable Welding machine	15
Cable pulling machine	6
Instrumentation Lab	5
Porta Cabins	252
Hi-Pot	8
Oil Filtration Machine (1 gallon 200/500 lrs)	1

JEDDAH & JUBAIL CAMP PICTURES

Jeddah Camp Facility



Jubail Camp Facility



LOGISTICS ORGANIZATION & CAMP (2,100 BED CAPACITY)



TURAIIF – WADI AL SHAMAL CAMP FACILITY FOR 600. WORKSHOP & WAREHOUSE

JUBAIL ABU HADRIYAH CAMP & FACILITIES FOR 750 & WORKSHOPS / WAREHOUSES

JEDDAH – HEAD OFFICE & CAMP & FACILITIES FOR 200 & WORKSHOP & WAREHOUSE

SEC POWER PLANTS PP13 – DHURMA RIYADH – CAMP FOR 550 & WORKSHOP / WAREHOUSE

JEDDAH SOUTH THERMAL POWER PLANT PROJECT - SITE OFFICE & CAMP & FACILITIES FOR 600 & WORKSHOP & WAREHOUSE

Base 80292 1AI (C00454) 1-03

ONGOING PROJECTS

WAAD AL SHAMAL -
INTEGRATED SOLAR
COMBINED CYCLE
POWER PLANT -
Services for Electrical
Assemblies

King Abdulaziz
International Airport
(KAIA) - E&I Works



GAMA for SEC
Power Plants PP13 -
Dhuruma 150 Km
from Riyadh

ANSALDO STS -
Riyadh Metro
Project Line 3,
Package B -
Installation of
Electro-mechanical
works

Base B02921AI (C00454) 1-03

SELECTED PROJECT REFERENCES

WAAD AL SHAMAL -INTEGRATED SOLAR COMBINED CYCLE POWER PLANT- TURAIIF

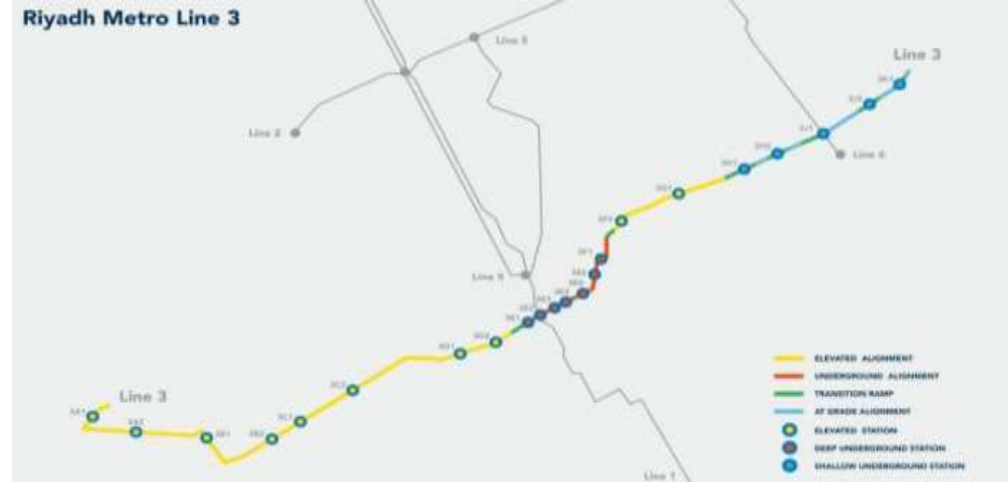
- Electrical Installation for Combined Cycle Power Plant – 1000 MW
- Client :- Saudi Electric Company (SEC)
- Main Contractor :- Abengoa/GE
- Project Value :- SAR 52,000,000.00
- Man-hours :- ~ 1,300,000



SELECTED PROJECT REFERENCES

RIYADH METRO PROJECT – LINE 3, PACKAGE B - RIYADH

- Installation Activities of Electro-Mechanical Works for Riyadh Metro Project Line 3, Package B
- Client :- Ar Riyadh Development Authority (ADA)
- Main Contractor :- Ansaldo
- Project Value :- SAR 95,250,000.00
- Man-hours ~ 1,800,000



SELECTED PROJECT REFERENCES

SEC POWER PLANT PP-13 - DHURUMA

- Electrical and I & C Works for Combined Cycle Power Plant – 2,000 MW
- Client :- Saudi Electric Company (SEC)
- Main Contractor :- (GAMA Power Systems)
- Project Value :- SAR 70,000,000.00
- Man-hours ~ 1,500,000



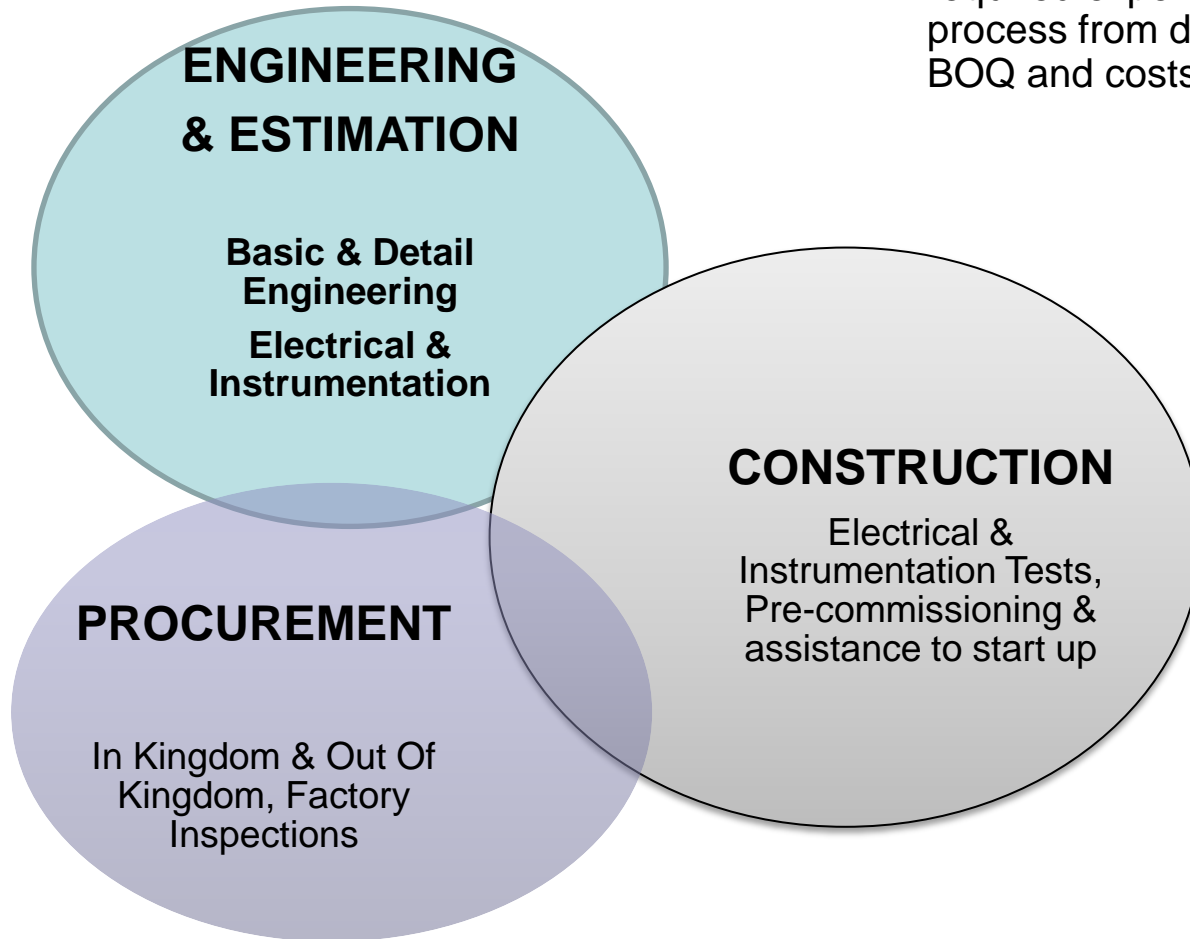
SELECTED PROJECT REFERENCES

JEDDAH SOUTH THERMAL POWER PLANT STAGE – 1 - JEDDAH

- Electrical & Instrumentation Work for Power Block # 1 & # 3, Unit, STG & Boiler Area – 660 MW (Each Unit)
- Client :- Saudi Electric Company (SEC)
- Main Contractor :- Hyundai Heavy Industries
- Project Value SAR 81,000,000.00
- Man-hours ~ 2,000,000M



OPTIMIZATION OF SYNERGIES



Engineering & Estimation Department has the required expertise to ensure the complete bidding process from detailed design to the elaboration of the BOQ and costs estimation required in all E&I projects

Procurement Department has also the technical capacity of conducting factory inspections to guarantee the compliance with NMR, FAT, technical specifications and to ensure timely deliveries

Construction starts with the swift organization of the logistics, and the progressive mobilization of manpower and equipment at site. CGA has camps with capacity for over 2,000 people and construction equipment and facilities (warehouses/workshops).

FOCUSED
MANAGEMENT

&

dedicated human
resources

Skills & knowledge &
responsiveness

HEALTH, SAFETY &
ENVIRONMENT &
QUALITY ASSURANCE

Awareness &
commitment

In house continuous
training

SPECIAL EQUIPMENT
& LOGISTICS

Advanced technology,
Flexibility of mobilization

CLIENTS' QUALIFICATIONS

SAUDI ARAMCO	Vendor # 10006752
SEC	Vendor # 1000354
SABIC	Vendor # 501382
MARAFIQ	Vendor # 337
KJO	Vendor # 745S04/02
PETRORABIGH	Vendor # 100100
SASREF	Vendor # 1001200
YANPET	Vendor # CO513



PROJECT REFERENCES – ONGOING & PAST 10 YEARS

SL. No.	INDUSTRY	PROJECT	LOCATION	OWNER	MAIN CONTRACTOR	SCOPE OF WORK	AMOUNT (M.US\$)	MANHOURS (000-Direct)	PERIOD of EXECUTION	TYPE of CONTRACT
1	OIL/GAS & PETROCHEM	UMM WU'AL PHOSPHORIC ACID PLANT PROJECT.	TURAIK (KSA)	MA'ADEN	HANWHA SAUDI CONTRACTING CO. LTD.	INSTRUMENTATION WORKS.	12.53	450	JUL-15 / DEC-16	Lump Sum U.R.
2	OIL/GAS & PETROCHEM	RABIGH II-IK-EPC FOR COMMON UTILITIES AND TANK FARM.	RABIGH (KSA)	PETROBRABIGH (S/ARAMCO - SUMITOMO)	PETROFAC SAUDI ARABIA CO. LTD.	E & I Works Related to Rabigh II-IK-EPC for Common Utilities and Tank Farm.	6.13	250	NOV - 14 / DEC - 16	Lump Sum U.R.
3	OIL/GAS & PETROCHEM	YERP UTILITIES PACKAGE - SP4.	YANBU (KSA)	YASREF	BONATTI	Electrical, Instrumentation & Telecommunication Works.	13.04	640	APR - 13 / JUN - 15	Lump Sum U.R.
4	OIL/GAS & PETROCHEM	SADARA GAS SUPPLY PROJECT	JUBAIL (KSA)	SABIC	ETEC Arabia Limited Company.	Electrical & Instrumentation Works for SADARA Gas Supply Project.	2.87		FEB - 14 / JAN - 15	Lump Sum U.R.
5	OIL/GAS & PETROCHEM	JERP PACKAGE 8 CONVEYOR BELT SYSTEM.	JUBAIL (KSA)	SATORP	GCC (KSA)	E&I installation for the Conveyor System & Transfer Towers of the raw coke from JER to Jubail port (24km)	28.1	650	OCT - 2012 / JUN - 2013	Lump Sum U.R.
6	OIL/GAS & PETROCHEM	SHAYBAH PACK. 4	SHAYBAH (KSA)	SAUDI ARAMCO	SAMSUNG (Korea)	E& I GOSP 1, 2 3 & 4	46	3837	MAR - 2012 / DEC - 2015	Lump Sum U.R.
7	OIL/GAS & PETROCHEM	JERP Package 5 OFFISTE & UTILITIES	JUBAIL (KSA)	SATORP	TECHNIP (Italy)	E&I works, supply of bulk material	30.5	2492	NOV - 2010 / DEC - 2013	Lump Sum U.R.
8	OIL/GAS & PETROCHEM	JERP PACKAGE 3 AROMATICS.	JUBAIL (KSA)	SATORP	SAMSUNG (Korea)	E&I works, supply of bulk material	21.07	2215	OCT - 10 / JUN - 13	Lump Sum U.R.
9	OIL/GAS & PETROCHEM	REPLACE OF 6 MOTORS 27,000HP.	UTHMANIYAH & SHEGUM (KSA)	SAUDI ARAMCO	BONATTI	E&I works with Engineering, Procurement & Commissioning	7.24	191	MAY - 2009 / MAY - 2012	LSPB
10	OIL/GAS & PETROCHEM	UPGRADE ABU ALI.	ABU ALI (KSA)	SAUDI ARAMCO	BONATTI	E&I works, engineering & commissioning for the installation of 3 water injection pumping trains. Installation of new WOSEP. Upgrading onshore Control Room. Replacement of 2 new DCS 7 SCADA. Replacement of ESD	16.9	700	FEB - 2009 / OCT - 2012	LSTK
11	OIL/GAS & PETROCHEM	FLARE SYSTEMS.	UTHMANIYAH & SHEGUM (KSA)	SAUDI ARAMCO	BONATTI	E&I works, engineering & commissioning	14.47	289	FEB - 2009 / OCT - 2012	LSTK
12	OIL/GAS & PETROCHEM	SHAYBAH CENTRAL PROCESSING FACILITIES.	SHAYBAH (KSA)	SAUDI ARAMCO	NESMA for SNC LAVALIN (CDN)	E&I and pre-commissioning	10.72	600	MAR - 2008 / APR - 2009	LSTK
13	OIL/GAS & PETROCHEM	OPTIMIZE PRODUCTION AT MUBARRAZ AREA.	MUBARRAZ	SAUDI ARAMCO	BONATTI	GOSP- Optimizing the production. E & I works	6.79	280	SEPT - 2007 / SEPT - 2009	LSPB
14	OIL/GAS & PETROCHEM	RABIGH DEVELOPMENT PROJECT..	RABIGH (KSA)	PETROBRABIGH (S/ARAMCO - SUMITOMO)	NESMA for TECNICAS REUNIDAS (SP)	MS2 PACKAGE- E& I works including 4 25MVA transformers, erection of MV/LV bus ducts, switchgears & control blgs.	16.12	1200	APR - 2007 / FEB - 2009	Lump Sum U.R.
15	OIL/GAS & PETROCHEM	YANSAB OLEFINS PLANT.	YANBU (KSA)	YANSAB (SABIC)	TECHNIP (Italy)	Instruments installation and pre-commissioning including supply of bulk material	16.24	820	APR - 2007 / APR - 2009	Lump Sum U.R.

PROJECT REFERENCES – ONGOING & PAST 10 YEARS

SL. No.	INDUSTRY	PROJECT	LOCATION	OWNER	MAIN CONTRACTOR	SCOPE OF WORK	AMOUNT (M.US\$)	MANHOURS (000-Direct)	PERIOD of EXECUTION	TYPE of CONTRACT
16	OIL & GAS	DCS UPGRADE PROJECT.	JEDDAH (KSA)	LUBEREF	Consortium CARLO GAVAZZI ARABIA / ARIS	Design, Engineering & Installation of DCS/ESD system, fire detection, gas detection, HSDD systems & electrical installations. EPC of UPSX & Inverter and Distribution system. Pre-commissioning, Hot cut –over	3.04	130	OCT - 2005 / OCT - 2007	Lump Sum
17	POWER	WAAD AL SHAMAL - INTEGRATED SOLAR COMBINED CYCLE POWER PLANT.	TURAIIF (KSA)	SEC	GE/ABENER	Services for Electrical Assemblies.	13.84	1300	APR - 2017 / MAR - 2018	Lump Sum U.R.
18	POWER	SEC POWER PLANT PP-13.	RIYADH (KSA)	SEC	GAMA POWER SYSTEMS ARABIA LTD.	Electrical and I & C Works associated with power island ME & I and Equipment installation works.	18.13	1270	JUN - 2016 / NOV - 2017	Lump Sum U.R.
19	POWER	JEDDAH SOUTH THERMAL POWER PLANT STAGE - 1.	JEDDAH (KSA)	SEC	HYUNDAI HEAVY INDUSTRIES CO. LTD	Electrical & Instrumentation Work for Power Block # 1 & # 3, Unit, STG & Boiler Area.	21.86	1700	NOV - 14 / DEC - 16	Lump Sum U.R.
20	POWER	REPLACEMENT OF DCDB & ACDB FOR 15 SUBSTATIONS IN CENTRAL AREA.	CENTRAL REGION	SEC	CARLO GAVAZZI ARABIA	Installation of ACDB and DCDB panels in 15 substations (Riyadh/Al Kharj/ Qassim)	1.03		JUL - 2012 / MAR - 2014	Lump Sum U.R.
21	POWER	SHOAIBA PP STAGE III.	SHOAIBA (KSA)	SEC	ALSTOM POWER CENTRALES (France)	Engineering, Procurement and Construction of small power & Lighting systems.	12.53	323.2	DEC - 2009 / MAY - 2011	Turnkey Lump Sum & U.R.
22	POWER	SHOAIBA PP STAGE II PH. 1&2	SHOAIBA (KSA)	SEC	ALSTOM POWER CENTRALES (France)	Construction of 6 x 350MW PP and related utilities.	32.45	3200	DEC - 2004 / MAY - 2008	Lump Sum U.R.
23	POWER	SHOAIBA PP STAGE II PH. 2	SHOAIBA (KSA)	SEC	ALSTOM POWER CENTRALES (France)	Construction of 6 x 350MW PP and related utilities.	26.43	480	MAR - 2005 / MAY - 2008	Lump Sum U.R.
24	POWER	AL THURAYA 34.5/11kV S/S .	AL HASSA (KSA)	SEC	CARLO GAVAZZI ARABIA	Design, Engineering, Procurement, Construction and test commissioning of the Thuraya 34.5/11kV S/S in Mubarraz area.	4.38	61.3	AUG - 2002 / APR - 2005	Lump Sum U.R.
25	POWER	YANBU GAS PLANT EXPANSION PROJECT.	YANBU (KSA)	SAUDI ARAMCO	PETROJET (Egypt)	E&I works, testing & pre -commissioning. Installation of MV transformer, Switchgear, MCC's and complete instruments including DCS.	5.8	250	MAY - 2007 / MAR - 2009	Lump Sum U.R.
26	POWER	REPLACEMENT OF OFF SHORE ELECTRICAL EQUIPMENT.	AL KHAFJI (KSA)	KJO	CARLO GAVAZZI ARABIA	Replacement of the existing electrical installations of Al Khafji and Ratawi oil off shore production in the Arabian Gulf. Provide marine equipments. All basic /detailed engineering. Installation, pre-commissioning and commissioning. Works on flow stations Y3 and Y4.	19.09	240	SEP - 2004 / JAN - 2005	LumpSum
27	POWER	MADINAT YANBU AL SINAIYAH STEAM PP Unit 4.	YANBU (KSA)	ROYAL COMMISSION	ENELPOWER (Italy)	E&I EPC and commissioning. Transformer 25 MVA & 2.2. Switchgears MV/LV; MCC; Field instruments; DCS (Honeywell)	5.49	400	JUL - 2002 / APR - 2005	Unit Rates

PROJECT REFERENCES – ONGOING & PAST 10 YEARS

SL. No.	INDUSTRY	PROJECT	LOCATION	OWNER	MAIN CONTRACTOR	SCOPE OF WORK	AMOUNT (M.US\$)	MANHOURS (000-Direct)	PERIOD of EXECUTION	TYPE of CONTRACT
28	WATER	SIDEM's MARAFIQ SWRO Plant in SADARA Complex Jubail-2.	JUBAIL (KSA)	MARAFIQ / SADARA	BONATTI	Electrical & Instrumentation Works.	8.5		FEB - 14 / DEC - 15	Lump Sum U.R.
29	WATER	YANBU IWTP II.	YANBU (KSA)	MARAFIQ	SETE ENERGY	E & I works.	8	270	MAR - 2011 / OCT - 2012	Unit Rates
30	WATER	JUBAIL IWTP 8.	JUBAIL (KSA)	MARAFIQ	SETE ENERGY	E & I works.	9.78	200	OCT - 2010 / JUL - 2011	Unit Rates
31	WATER	RENOVATION & URGENT MODIFICATION WTF.	AL KHAFJI (KSA)	KJO	SETE ENERGY / FOSTERWHEELER / CGA	EPC for Renovation & urgent modification of existing facilities.	11.38	195	DEC - 2009 / DEC - 2011	Lump Sum
32	WATER	SHUAIBA IWPP.	SHOAIBA (KSA)	SWCC	ANSALDO CALDAIE (Italy)	E&I supply and erection works for 3 units boilers, 1 unit auxiliary boiler, 3 units ESP & Fly Ashes Removal System.	6.22	400	JAN - 2008 / JUL - 2009	Lump Sum + Unit Rates
33	WATER	KAUST- King Abdullah University – Tuwal.	Thuwal (KSA)	KAUST / Aramco	NESMA / SETE	Engineering, Procurement and installation for the E&I works for the desalination plant.	5.33	100	FEB - 2008 / MAY - 2009	Lump Sum / Cost Plus
34	WATER	1.5MMGDP MSF SEAWATER DESALINATION PLANT & FRESH WATER TANK.	AL KHAFJI (KSA)	KJO	SETE ENERGY / FOSTERWHEELER / CGA	Build a 1.5 million Gallon per day multistage flash seawater desalination unit. Design, Engineering, Procurement, Construction, Pre-commissioning & Commissioning.	40.4	200	MAR- 2005 / OCT- 2007	Lump Sum
35	WATER	RABIGH DESALINATION PLANT	RABIGH (KSA)	SAUDI ARAMCO	SETE ENERGY & ACQUATECH	EPC for electromechanical, Electrical & Instrumentation and maintenance for a desalination plant 10,000 cub mtrs/day	7.91	150	MAR- 2004 / JUN- 2005	BOOT
36	INFR	KAIA - Jeddah Airport - Development Project Phase 1	JEDDAH (KSA)	GACA	BINLADIN GROUP - Advanced Vision Co.	Installation of Electrical works.	2	390	FEB- 2017 / JUL- 2017	Unit Rates
37	INFR	Riyadh Metro Project Line 3, Package B.	RIYADH (KSA)	RIYADH PUBLIC TRANSPORT	Branch of ANSALDO STS S.p.A.	Installation Activities of Electro-Mechanical Works for Riyadh Metro Project Line 3, Package B.	25.4	1200	NOV- 2016 / NOV- 2018	Unit Rates
38	INFR	AUTOMATED PEOPLE MOVER – PNUW	RIYADH (KSA)	MIN. OF FINANCE	ANSALDO STS (Italy)	Engineering, supply and erection of Power, ATC system, SCADA, 3 rd rail , Telecom	10.65	525	APR- 2010 / JUL- 2011	Lump Sum U.R.
39	INFR	CABLE FACTORY	RABIGH (KSA)	AL SUWAIDI	NESMA	E&I works, field engineering & pre-commissioning.	2.67	271	DEC-2008 / MAY- 2009	Lump Sum
40	INFR	HADEED DIRECT REDUCTION PLANT EXPANSION	JUBAIL (KSA)	HADEED (SABIC)	SAUDI VOEST ALPINE	E&I works : installation and supply of electrical materials, Installation of 2500MVA to 160 KVA transformers, switchgears/MCC, lighting, fire alarm system, DCS system/PLC automation . Furnace electrification. Testing & pre-commissioning.	6.91	650	MAY 2006 / OCT 2007	Lump Sum U.R.

85, Mohd. Ali Al- Harkan Str. – Al Andalus District
P.O. Box 15291 - Jeddah 21444
Kingdom of Saudi Arabia

Tel: (+966) -12- 6611637 / 6696019 / 6635664
Fax: (+966) -12- 6611873

www.carlogavazziarabia.com.sa
info@carlogavazziarabia.com
www.carlogavazzi.it

*IMS CERTIFIED COMPANY
(ISO9001, ISO14001 & OHSAS18001 standard)*