

**HOW TO PREPARE FOR YOUR MODIFIED
MARYLAND NON-COMMERCIAL CLASS C DRIVER'S TEST**

Your noncommercial driving test will be conducted on a closed course to test your basic control of the vehicle. To maximize safety in response to COVID-19, the modified test does not include driving on a public road but follows the recommended national guidelines for driver safety. It also ensures the safety of our customers and employees.

For the Basic Control Skills test, you will demonstrate your ability to maneuver a vehicle around other objects. For each exercise, you are expected to drive as you would if you were on a public road. You will receive points for reversals in direction, crossing over or touching boundary lines or cones, failing to use or incorrectly using your turn signals, failing to stop at a stop sign and failing to do head and traffic checks. You must complete the exercise as directed. You will receive specific instructions for each exercise prior to performing them. If the Maryland Department of Transportation Motor Vehicle Administration (MDOT MVA) Driver's License Agent (DLA) raises their hand, you must STOP the vehicle, place it in park, and wait for further instructions.

A MDOT MVA DLA will provide instruction from the outside of the vehicle, and successful execution of each maneuver within the provided timeframe, is required to pass. If you do not pass the test, you will need to make another appointment to take the entire test again. You must provide a vehicle that meets safety standards as described in this guide, in addition to proof of vehicle insurance. Additionally, due to the modifications, customers whose vehicles do not provide a clear view into the interior of the vehicle, will be required to roll all windows down.

The information provided in this guide serves only to assist you in preparing for your test. However, it should not be used as the sole source and should be used in conjunction with the MDOT MVA Driver's Handbook.

Test Information

Key:

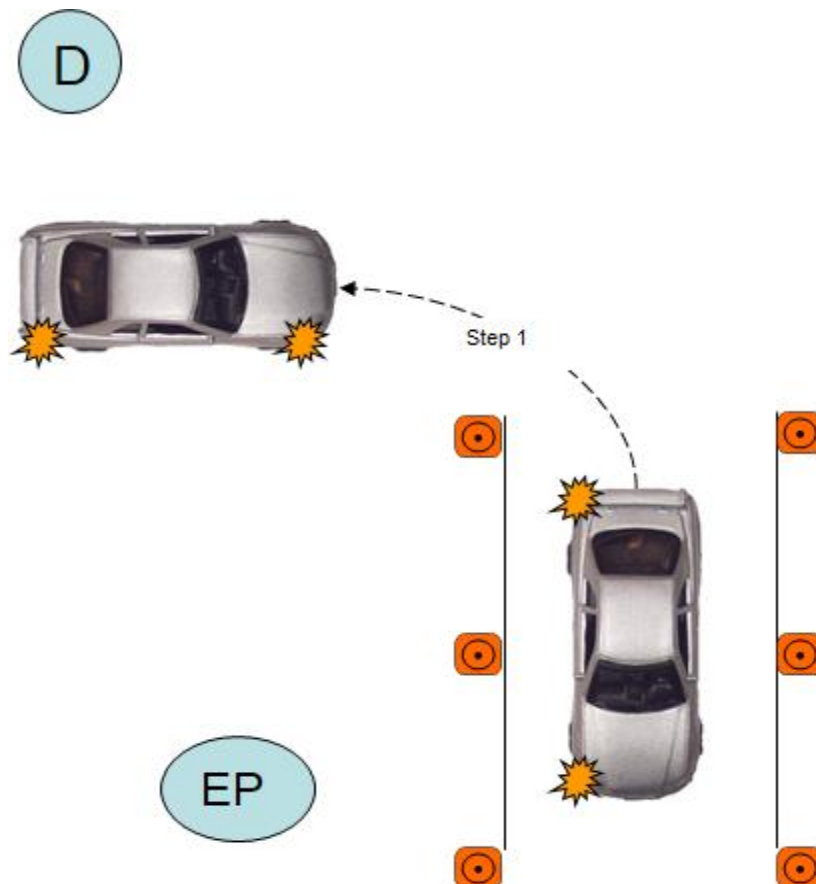
“D”- Indicates where the MDOT MVA Driver’s License Agent will provide you the **directions**.

“EP”- Indicates the **Examiner Position** where the MDOT MVA Driver’s License Agent will examine your performance of the maneuvers.

Closed Course Maneuvers: A test of your basic control skills will be conducted on a closed course. It will assess your general driving ability along with the following exercise:

Pull-in Parking Instructions —You will be asked to drive past an area that represents a driveway or alley. You will be required to drive forward into the first parking space until the back end of your car clears the front set of cones. For the second part of the exercise you are going to exit to the right and stop your vehicle in the original start position. You will have 3 minutes to complete this exercise.

You will be evaluated on your backing skills, visual skills, judgment of space, use of mirrors and turn signals, steering, braking, acceleration control and general driving skills.

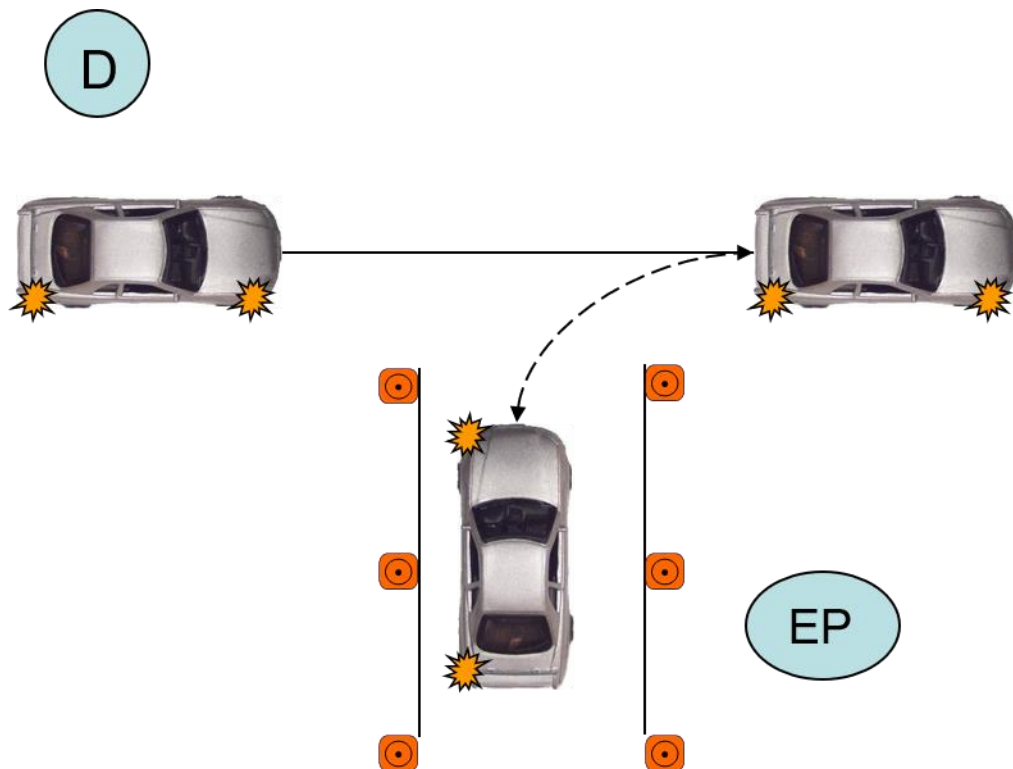


Back-in Parking Instructions —You will be asked to drive past an area that represents a driveway or alley. You will be required to drive past an opening on the right and stop your vehicle. Then back your vehicle into the opening until the front of your vehicle is past the front set of cones and stop for further instructions.

For the second part of this exercise, you will exit the space to the right, stop your vehicle, and back your vehicle to the original starting position.

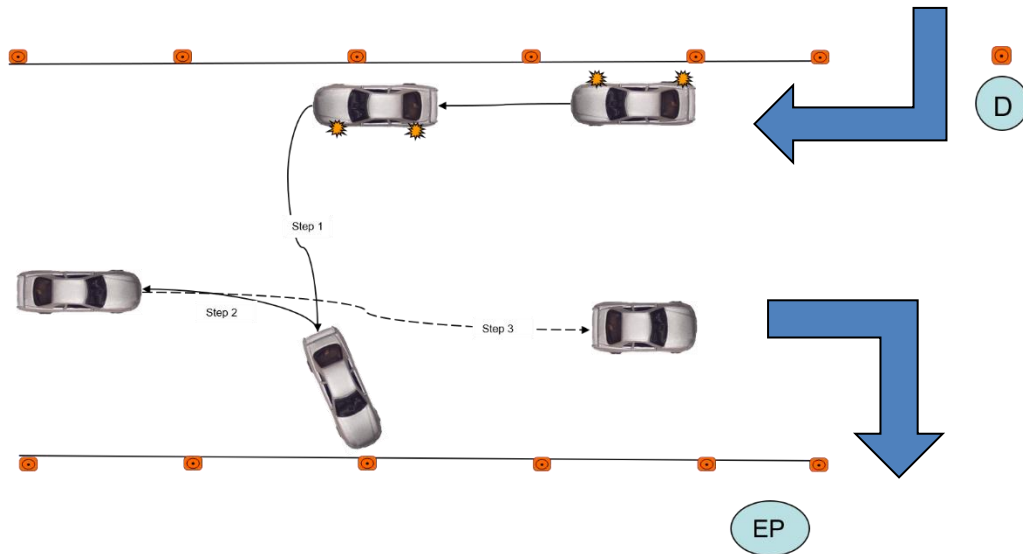
You will have 3 minutes to complete this exercise.

You will be evaluated on your backing skills, visual skills, judgment of space, use of mirrors and turn signals, steering, braking, acceleration control and general driving skills.



Three-point Turnabout Instructions –You will be required to turn right into a space while keeping your vehicle as close to the right as possible and stop.

For the second part of the exercise complete the three-point turnabout within the boundaries. Stop for further instructions. After completion of the maneuver, exit the space to the right and follow the course around.



At the second intersection put your vehicle in park and wait for instructions.

You will have 3 minutes to complete this exercise.

You will be evaluated on your backing skills, visual skills, judgment of space, use of mirrors and turn signals, steering, braking, acceleration control and general driving skills.

MOTOR VEHICLE ADMINISTRATION

General Driving Practices: You will be evaluated on general driving practices in order to determine your ability to safely operate the vehicle. You must obey all traffic laws and signs. Below are some tips to assist you with safe driving practices.

Turns:

- You must use the correct turn signal when preparing to make a turn or to enter or exit a designated area.
- As you approach the turn, check traffic in all directions and activate the correct turn signal at the appropriate time.
- Brake smoothly, evenly and safely, when necessary, to get into the correct lane needed for the turn.
- If you must stop before making the turn because of traffic, signals or signs, smoothly come to a complete stop behind the stop line, crosswalk, or stop sign.
- When ready to turn, check traffic in all directions. Keep both hands on the steering wheel during the turn. Maintain smooth, even acceleration and yield to pedestrians and other traffic. Keep the vehicle in the proper lane and do not make contact with the curb.
- Make sure you finish completing the turn in the correct lane and that your turn signal has cancelled. Accelerate to the speed of traffic and move into the right lane when safe to do so, if not already there.
- Avoid getting too close to the curbs when making turns or performing an exercise. All tires must maintain contact with the roadway.

Braking:

- Brake smoothly using steady pressure.
- Come to a complete stop at stop signs.

Steering:

- Keep both hands gripped on the outside of the steering wheel at all times unless using other controls.
- You may not use the open palm of your hand to turn the wheel.

Lane Usage:

- Do not put vehicle over curbs, sidewalks or lane markings.

MOTOR VEHICLE ADMINISTRATION

Head/Traffic Check(s):

- Always check your surroundings to ensure it is safe to proceed.
- Check traffic and mirrors regularly.
- Watch for hazards by searching left and right.
- Scan ahead, observe traffic and look for pedestrians.
- Check for traffic in your “blind spots” by looking over your shoulder when necessary.

Stops:

- When stopping at a stop sign or traffic signal, do not stop over a marked stop line, pedestrian crosswalk, sidewalk or other marker.

Gear/Clutch Control:

When operating your vehicle, you must ensure it is in the proper gear

MOTOR VEHICLE ADMINISTRATION

Dangerous Acts/Automatic Failure* – Your driving test will be terminated immediately if you commit any unsafe action. Examples of some unsafe actions are listed below:

- Failure to wear glasses or contact lenses, if required
- Failure to properly fasten safety belt (shoulder and lap belt, if equipped with both)
- Exceeding three minutes to complete the closed course exercise
- Moving a Cone/Flag
- Failure to come to a complete stop at a stop sign
- Failure to obey signs, signals, any other traffic law
- If you are involved in an avoidable crash or if your vehicle makes contact with other vehicles, objects or pedestrians.
- If you commit any unsafe act or if another driver is forced to take evasive action in order to prevent a crash.
- If you put the vehicle over sidewalks or curbs.
- If you do not follow the examiner's verbal instructions.
- If you impede the flow of traffic unnecessarily.
- If you remove both hands from the steering wheel while the vehicle is in motion.
- If the examiner is forced to intervene; either physically or verbally to avoid a collision or unsafe act.

***Your tests will also be terminated when excessive basic driving errors are accumulated.**

MARYLAND DEPARTMENT OF TRANSPORTATION

MOTOR VEHICLE ADMINISTRATION

General Information:

All driving tests require an appointment. To schedule an appointment, visit the MDOT MVA Central Scheduling System at <https://mvascheduling.mva.maryland.gov/>, then choose “Driver’s Skills Test” from the list of appointment types. For additional assistance, contact the Customer Service Center at 410-768-7000 or for toll free assistance call 1-800-950-1682.

- A supervising driver must accompany you for your driving test. Maryland law defines a supervising driver as one that is at least 21 years of age, has at least 3 years driving experience and is seated in the passenger seat when you are driving. If you do not have a “supervising” driver, any licensed driver may drive you to the test location and remain behind the wheel until the examiner checks their license. No one other than the applicant the examiner(s) and MVA approved interpreter are allowed in the vehicle during the test.
- MVA allows the use of approved foreign language interpreters during the driving test at the applicant’s expense. The interpreter will remain outside of the vehicle alongside the MDOT MVA test examiner. Please see the list of MVA approved interpreters on our website at www.mva.maryland.gov.
- Customers who are deaf or hard of hearing may request a sign language interpreter by [contacting us](#) or by calling the following TDD telephone number: 1-800-492-4575. The MVA will schedule a sign language interpreter for the driving test at no cost to the customer.
- New drivers must have successfully completed an approved driver education course. The Maryland driving school will electronically submit verification of completion. New drivers must also present the completed skills practice log and completed certification page along with your unexpired Maryland learner’s instructional permit.
- Out of country license holders you must present your 3-hour drug and alcohol certificate.
- You must present your current proof of insurance (policy, card, or FR-19) and your valid vehicle registration card for testing. If the vehicle you are using is a rental vehicle, your name must appear on the rental agreement as an authorized driver.
- Because the vehicle you provide for your driving test will be driven on public roads, it will be required to pass an inspection prior to the test. You will also be required to demonstrate various controls on your vehicle to ensure they are safe and operable. Please be sure that you know how to operate all vehicle controls.

MOTOR VEHICLE ADMINISTRATION

VEHICLE CHECK LIST

Please use the check list below to determine if your vehicle is safe for testing purposes. Your vehicle will be disqualified for testing if it is deemed to be unsafe in accordance with the list below. If this occurs, you will need to reschedule your driving test for another time.

- Front and rear tags, as required, with valid registration
- Windshield - unobstructed view, no cracks
- Driver and passenger doors- must open/close
- Seat belt- secure, fastens properly (shoulder and lap if equipped)
- Tires- properly inflated with adequate tread and no missing lug nuts on wheels
- Lights and lenses- none broken all operate (head, brake, signals, hazards) Lens repair tape permitted if proper color
- Rearview and outside left side mirror- secure, not broken
- Front seats- free of debris (oil, food, wetness) operational, not broken
- Glove box -closed, no loose articles that may create a hazard
- Exhaust system-secure, no leaks, smelled, seen or heard
- Brake and accelerator pedal- secure, properly adjusted, operable
- Dashboard warning lights- none activated, no safety concerns
- Fluid leaks- no dripping oil, coolant, transmission fluid etc.
- Horn operational
- Speedometer operational

If weather conditions are wet and/or cold

- heater and defroster must be operable
- windows must roll up
- windshield wipers and washers must be operable and have washer fluid

If weather conditions are extremely hot

- Front windows must operate properly.