



HOUSING —GUIDE—

EMAIL housing@mi.edu

TOLL FREE 323.462.1384

WEB mi.edu

CONTENTS

Introduction	3-4
Housing Options	5
Budgeting & Living Expenses	6
Housing Tips	7-11
Frequently Asked Questions	12-14
Hotels and Hostels	15-16
MI Preferred Housing Radius Map	17
McCadden Residence Hall	18
Apartment Listings	19-22
Homestays and Phone Listing	23
Management Company Listings	24
Zip Code Map & Metro Route	25
MI Parking Map	26
Roommate Questionnaire	27

DEAR STUDENT,

Congratulations on your acceptance to Musicians Institute. We want to take this opportunity to welcome you to MI and describe the housing services MI has to offer.

We realize that finding a safe, comfortable, and affordable place to live is a concern for many of our students, and it can be an especially daunting task if you are from another state or country and are unfamiliar with the Los Angeles area. That's why we're here – the Housing Department provides a number of resources designed to help you find housing, connect with roommates, and generally get settled in before you begin classes.

We have two Residence Hall locations in walking distance of our main campus. There are also always plenty of vacancies close to the school as well as private dormitory-style facilities designed to serve the thousands of students attending various schools in Hollywood. The enclosed housing package describes the available options and the different resources we offer.

We look forward to assisting you with any housing-related questions and concerns you may have, so please do not hesitate to contact us at (800) 255-7529 *USA/Canada*, (323) 462-1384 *Local/International* or at housing@mi.edu.

Sincerely,

MI Housing Department

EMAIL housing@mi.edu

PHONE 323-462-1384

HOURS M-F 9:00am - 4:45pm

LOCATED Student Support Center

Passage West, First Floor

HELLO!

Welcome to Musicians Institute! The Housing Department is committed to providing you with up-to-date information regarding housing and other services that will make your transition to Hollywood as smooth as possible.

Finding a Place to Live: How We Can Help

The Housing Department provides information regarding residence hall and apartment vacancies, apartment prices, areas to search, and roommate referrals. We are in regular contact with many of the landlords/owners of apartments in the immediate area. In the back of this housing guide you will find a list of these apartments; feel free to contact the managers regarding vacancies, or our Housing Department for a direct connect to vacancies. You can also search the Internet for apartments in Hollywood and other areas of Los Angeles, but keep in mind that it may take two weeks or more to secure an apartment, so be patient.

Moving in with Current Students

The Housing Department keeps lists of current students with rooms for rent. This is an excellent way to get settled fast and save on expenses.

Finding Roommates

Joining up with other new students to rent housing is another great way to meet people while keeping your costs down. The Housing Department maintains a list of new students looking for roommates. To be included on this list, please complete and return the Roommate Questionnaire on the last page of the Housing Guide to housing@mi.edu to register with our Housing Department (it is your responsibility to contact other students on the list and make arrangements for finding joint housing).

Know Your Responsibilities

A comfortable living situation is a vital part of successful student life. While we will make every effort to assist you, remember that it is ultimately your responsibility to secure housing. The Housing Department is a courtesy service and we do not independently investigate, endorse or guarantee any information provided by third parties. Allow time to choose roommates and apartments carefully and read all agreements and leases before you sign. If you have questions about a lease agreement, we can help you understand it.

All of us in the Housing Department look forward to working with you and we will do our best to help make your M.I. experience the best time of your life!

Keep in mind this is only a guide. Lease rates and guidelines are provided as a suggestion or estimate. Musicians Institute is not liable for any results due to these guidelines.

MI PROVIDES THE FOLLOWING HOUSING SERVICES:

1. MI Residence Hall Placement

MI now operates a residence hall location within walking distance of the main Hollywood campus. Space is available on a first-come, first-serve basis.

Location:

- 1527 N. McCadden Place, Hollywood, CA 90028

2. Apartment Vacancy Listing Service (MI Housing Department)

Vacancy listings for areas adjacent to MI (Hollywood, West Hollywood and Hollywood Hills) are available on a daily basis through the Housing Department. Monthly rents range from \$600.00 - \$2,100.00 depending on size, location, amenities and if you're sharing the cost of expenses. Listings for other areas are also available upon request.

3. Roommate Referral Service (MI Housing Department)

This is your first step toward creating your MI network. The Roommate Referral list (exclusive to MI students) includes names, places of origin, arrival dates, phone numbers, email addresses and personal preferences for other incoming MI students seeking roommates. Complete and return the Roommate Questionnaire on the last page of the Housing Guide and you will be added to the list (NOTE: this list is provided exclusively to those who complete the questionnaire and no information will be shared with any outside individuals or organizations without your specific written consent. Please report any concerns to the Housing Department).

4. Student Housing Guide

This informative guide describes Housing Department services as well as valuable information about settling in and getting around Los Angeles, including hotels and hostels, guidelines for dealing with landlords and rental agreements, and tips for maintaining a budget. The Housing Guide also has a current list of apartment managers and home-stay companies that have worked with MI students in the past and understand your needs.

5. Shuttle Service/Transportation

We provide a free shuttle service within a two-mile radius from the school to your home. Shuttle hours of operation are Monday-Friday 5:00pm-2:00am. The enclosed Housing Guide map borders a 2 mile radius. Many students live within this radius which is walking distance to the campus. As an MI student, you are also entitled to public transportation discounts through the MTA (subway and buses in the greater Los Angeles area). Our Student Affairs department will assist you in applying for a monthly MTA Student TAP card.

We look forward to helping you in any way we can to find a great place to live in Hollywood/Los Angeles. Please call or email us if you have any questions. Welcome to MI!

BUDGETING FOR YOUR STUDENT LIVING EXPENSES

Each year, the California Student Aid Commission publishes estimated costs of living while attending school in California. These costs are based on maximum estimated living expenses per month, but your actual expenses will vary depending on your style of living (for example, MI students often reduce rental costs to as little as \$400 per month by sharing housing with roommates). The MI Housing Guide provides additional tips for saving money while you're in school.

Student living at home with parents (per month)

Tuition ¹	(varies by program)
Books and Supplies ²	\$ 147.00 *
Food/Housing ³	\$ 530.00
Transportation ⁴	\$ 125.00
Personal/Miscellaneous ⁵	\$ 351.00
Total per month	\$ 1,153.00 plus tuition

* Please refer to the course catalog, the application form, or your admissions counselor for complete details.

Student living Off-Campus (per month)

Tuition ¹	(varies by program)
Books and Supplies ²	\$ 147.00 **
Food/Housing ³	\$ 1,330.00
Transportation ⁴	\$ 141.00
Personal/Miscellaneous ⁵	\$ 322.00
Total per month	\$ 1,940.00 plus tuition

** Please refer to the course catalog, the application form, or your admissions counselor for complete details.

¹ Includes all mandatory fees.

² The breakdown for this category is as follows: books (\$963), educational supplies (\$252), course material fees (\$144), and computer-related expenses (\$405), excluding the costs associated with the purchase of a personal computer.

³ Includes food, snacks, meals on campus, household supplies, dorm charges, rent, and utilities.

⁴ Includes travel to and from parent's residence and transportation costs to and from classes and work. (e.g., bus fare, gasoline, tolls, parking.)

⁵ Includes clothing, laundry and dry-cleaning, personal care, gifts, recreation, medical etc.

NOTE: The expense budgets shown above are based upon average expenses reported by students at the University of California, California State University, California independent institutions, and California Community Colleges in the 2006-07 Student Expenses and Resources Survey (SEARS), adjusted for nine years of inflation or deflation. Private career college data are from the 2003-04 SEARS, adjusted for 12 years of inflation or deflation.

HOUSING TIPS

Just as when you make any purchase, you must do some research in order to find the best housing deals.

When To Look For Housing

Because specific information regarding the availability of apartments is always changing, we strongly recommend that students begin looking for housing no sooner than one month prior to their scheduled enrollment date. Most students choose to live within walking distance to school, and there are many housing opportunities available for incoming students in the surrounding area.

Study The Difference In Housing Costs

The daily apartment listings provided by Musicians Institute, gives you an idea of costs by area, unit, and size. Compare the types of housing available. Also study classified ads. If you are sharing an apartment, expect to spend at least \$600.00 to \$750.00 a month per person for rent (more if you want to live alone).

Think Before You Rent!

If you are sharing housing, compare your budget with that of your roommate(s). Don't get in over your head! Determine your personal need for physical and psychological space. Don't make compromises that you cannot live with.

How To Start Looking

It is extremely helpful to use a checklist or a small notebook to keep track of your listings. Collecting information on separate scraps of paper makes it difficult to compare units you have visited.

Make An Appointment

Landlords can get upset if you just pop in. If you will be late or have to cancel, be sure to call and let the landlord know ahead of time.

Look Presentable

Be clean and neat in your appearance. Often, the manager will judge how well you will take care of your housing by your personal cleanliness.

Walk Around The Area

Walk, rather than drive, to units in a particular area. Walking gives you a much better opportunity to explore the neighborhood. Visit again in the evening or over the weekend for a better picture of the area.

Make An Informed Decision

Make sure you are completely comfortable and informed before you sign a lease. If the landlord makes any oral promise that is not in the agreement, get it in writing! Keep a copy with your lease and give a copy to the landlord.

Learn How To Read And Negotiate A Lease With A Landlord

Most apartments will require you to sign some kind of lease. You will need to understand your rights and responsibilities as a tenant. Carefully review any documents before signing them. You may not be able to back out of a lease after you have signed it. If you need help in understanding your lease, bring the document to the Housing Department and we will generally explain what things mean. M.I. EMPLOYEES ARE NOT QUALIFIED TO OFFER AND DO NOT PROVIDE LEGAL ADVICE! Included in this guide is contact information for the Legal Aid Foundation of Los Angeles, who may assist you if you have a legal problem and cannot afford a private attorney.

MOVING IN

Making Your New Place A Home

At last, you've found a place to live!! Whether it's a dream house or a simple efficiency apartment, the challenge now is to make these empty rooms your own. The following are some tips on turning your new house or apartment into a home.

Utility Hook-Ups

Most apartments in Hollywood include water usage in the rent. Other utilities vary; your lease agreement should specify what you're responsible for in addition to rent. To turn on utilities after you move in:

Gas: Contact the Southern California Gas Company, if you need to turn on gas for cooking or heating. [1-800-427-2200, www.socalgas.com]

Electricity: Contact the Department of Water and Power. [1-800-342-5397, www.ladwp.com]

Land-line Telephone Service: Telephone companies are extremely busy just before the beginning of the academic year, so place your request for a phone connection as far in advance of moving in as possible.

Furnishings

The gas and electricity are turned on and the telephone works - now you need to collect some furniture, linens and kitchen utensils. Here's how to do it so without spending a fortune:

Classified Ads: the Recycler and Craig's List offer popular online options.

Garage/Yard sales: one of the quickest ways to acquire cheap, usable goods. One man's trash is another man's treasure.

Flea Markets: where bargaining is still a respected skill. Some of the more popular markets are Pasadena Rose Bowl, Marina Del Rey, and Melrose/Fairfax (Sundays).

Thrift Stores: a ready source for used clothing, furniture and house wares. Check the Yellow Pages under "Thrift Shops" or "Second Hand dealers" for a complete list.

You can also consider renting furniture for short or long term periods.

MI Bulletin Boards are also full of things ranging from musical equipment to household appliances. As students graduate and move away they are often anxious to get rid of all that furniture and those pots and pans rather than move them across the country (or world)!

Insurance

We highly recommend that you acquire renters insurance. Most lease agreements will state that in the event of a break-in, fire or other damage to the apartment, the apartment complex is only responsible for damage to the building, and not inside the apartment. Renters insurance is usually an inexpensive way to protect your personal possessions. If you currently have an auto or other insurance policy, you may be able to save by acquiring a renter's insurance policy with the same company.



ATTENTION STUDENTS, FACULTY & STAFF

CORT MAKES FURNISHING YOUR APARTMENT EASY!

THE LOFT PACKAGE

\$99 for a 12 month lease*

Includes a bedroom set and TV.

Queen Bed with Headboard
Mattress Set Table Lamp
Nightstand 32" TV
Chest

THE STUDIO PACKAGE

For Smaller Spaces.

\$99 for a 12 month lease*

A perfect way to furnish small spaces.

LIVING ROOM: Sofa Cocktail Table Floor Lamp	BEDROOM: Headboard Mattress Set Chest Nightstand Table Lamp	OTHER: 2 Bar Stools
---	---	-------------------------------

THE URBAN PACKAGE

For Smaller Spaces with a Dining Set.

\$99 for a 12 month lease*

The same furniture as the Studio Package with a dining room table and two chairs instead of two bar stools.

Order your furniture today!

THE NECESSITIES PACKAGE

For Larger Spaces with a Dining Set.

\$119 for a 12 month lease*

Three coordinated rooms, providing all the furniture you need to be comfortable in your new place.

LIVING ROOM: Sofa Chair Cocktail Table End Table Table Lamp	DINING ROOM: Dining Table 4 Dining Chairs	BEDROOM: Headboard Mattress Set Dresser & Mirror Nightstand Table Lamp
---	--	--

THE ACADEMIC PACKAGE

For Larger Spaces with a Study Area.

\$119 for a 12 month lease*

The same furniture as the Necessities Package with a desk, chair and lamp instead of a dining room table and chairs.

**Add an Extra Bedroom Set for just
\$64/month with a 12 month lease***

(Includes a Headboard, Mattress Set, Chest, Nightstand and Table Lamp)

**Add a Study Package for just
\$29/month with a 12 month lease***

(Includes a Desk, Chair and Lamp)

* Pricing is per month. No other discounts apply. Must present a valid student ID Furniture is Manager's Select package. Initial payment will include first month's rent and applicable fees. While supplies last. Sales tax, waiver and transportation fees not included. Packaging pricing subject to change with out notice.

855.435.9133

cort.com/student

©2018 CORT. A Berkshire Hathaway Company.

CORT

LIVE. WORK. CELEBRATE.™

MAINTAINING A HOUSEHOLD

After moving in and getting set up, you'll need to control your monthly budget and cooperate with your roommates on things like food and other household expenses.

Here are some tips:

- If you cooperate with your roommates on food purchase and preparation, work out a system in advance to keep things fair.
- Respect your roommates' private space, including shelf space in kitchen and bathroom.
- Clean up after yourself—nothing causes more fights among roommates than different tolerances for sloppiness.
- Make a grocery list in advance to eliminate costly “impulse buying”.
- Eat before you shop. If you are hungry you will end up buying more.
- Avoid buying meat or cheese that has been pre-sliced; it tends to spoil faster than whole pieces.
- Buy supermarket or generic brands rather than “name” brands.
- Avoid buying pre-packaged, ready to use or instant “convenience foods” - they are more expensive and often not as healthy.
- Eggs are an economical, highly nutritious meat substitute. Milk and cheese are inexpensive, nutritious foods.
- Buy in large quantities and take advantage of sales.
- If you have a land-line, check with your telephone service for extended calling privileges. If you call one or more toll areas frequently, rather than being charged per call, you can arrange to have unlimited calling privileges to some areas for a standard charge per month.
- Direct distance dialing is the cheapest way to call long distance.
- Clean your oven, range and refrigerator, and defrost your freezer regularly, at least once a quarter to save on utility bills.
- Turn off lights when you leave a room.
- Set thermostats on the furnace and water heaters to lower temperatures.
- Don't over-heat or over-cool your apartment - both can be shockingly expensive.
- Operate dishwasher only when full.
- Be on the lookout for student discounts and use them. These are available for buses, movies, museums and stores.
- Go to matinées and check local papers for discount nights at the movies. The Artist Career Services office sells discount movie vouchers for AMC theaters.
- Don't keep a lot of cash on hand - you will spend it.

MOVING OUT

All Things Must Pass

Moving out can be as complicated and stressful as moving in, but if you approach it the right way you should avoid most problems. If you do not, you may lose money and time. Here are some of the important procedures you should follow when it's time to move:

Check For Signed Rental Agreement

The agreement will specify the terms of your rental, including renewing, extending or terminating the rental. Don't wait until the lease expires to figure it out - staying past the agreed lease period without written consent of the owner makes you a holdover tenant. If you paid last month's rent when you moved in, don't "forget" and pay the last month's rent when you move out - you may have a hard time getting it back.

Notify Your Landlord/Manager In Writing

This must be done at least 30 days (or more - check your lease agreement) in advance of your moving date or you may still be held liable for rent. Make sure to keep a copy for yourself.

Have Your Landlord/Manager Inspect The Apartment

If the landlord/manager refuses to inspect the premises in person in your presence or if you feel there may be a future dispute regarding the condition of your apartment, take pictures of the entire apartment after you have cleaned it.

Settle All Balances

There may be miscellaneous charges due at the beginning of the last rental period.

Notify All Utility Companies

Provide at least one week's notice to allow them to discontinue service and stop billing.

Remove All Trash And Personal Belongings

Leave it the way you found it. Place furnishings in their original position. Clean all floors, bathrooms, closets, fixtures, kitchen utensils, etc. Your security deposit must be refunded to you within 21 days after you move out, but in order to get your full security deposit back it is your responsibility to leave the apartment in the same condition as when you moved in. The landlord may make deductions from your security deposit for unpaid rent, damages, and cleaning that is required.

Return All Keys

If you don't, you may be assessed a key replacement charge which can be expensive.

Leave A Forwarding Address

Notify the Post Office and the landlord to enable prompt return of your deposit.

FREQUENTLY ASKED QUESTIONS

Is Hollywood safe?

The police and Hollywood security firms have improved overall security in the area, but Hollywood is still a BIG city so keep your eyes open and exercise common sense regarding when and where you walk, particularly when you are alone. If in doubt, spend the money on a cab or call a friend for a ride.

Where do I purchase home furnishings?

Garage sales, MI advertisement boards, IKEA, Target, used furniture stores, Craig's List.

What kind of clothes should I bring?

LA has a moderate climate, but it can get surprisingly chilly in the winter and the temperature can drop quickly at night. In the winter (Dec-April), a medium jacket, long pants (and occasionally an umbrella) will be enough. Summer can be quite hot, but shorts and t-shirts are acceptable attire for almost any occasion.

How close are shopping centers?

There are numerous grocery stores within a one-mile radius of MI and larger stores such as Target are a short bus ride away.

How and where do I open a bank account?

There are several local branches of nationwide banks. An account representative from Wells Fargo will be on campus during registration to help you open a bank account.

What's the difference between a single/studio apartment and a one-bedroom apartment?

A studio apartment has a living space, kitchen, and a bathroom. A one-bedroom apartment has a bedroom, a living space, kitchen, and a bathroom.

What's the difference between a "studio" and a "bachelor" apartment?

A studio apartment has a full kitchen while a bachelor has limited kitchen facilities.

How much do utilities cost?

Some apartments include all utilities in the rent; most will include at least water and garbage. You can expect to pay for cable and telephone at all apartments. An average electric bill will be around \$50/mo. and an average gas bill will be around \$20/mo. Obviously, this is just an estimate and will vary depending on usage.

Where do I live if I'm joining the three-month MI Select program?

Most apartments require at least a six-month lease. Occasionally you can find a month-to-month lease. Keep an eye on the rooms/ apartments available list. This list is composed of current students (with apartments) looking for roommates. Other options are longterm stays at area hotels and hostels, homestays, and subletting.

Does MI provide temporary housing?

No, but we provide referrals and discounts to local hotels, hostels and homestay companies.

FREQUENTLY ASKED QUESTIONS *(continued)*

How do I get from the airport to Hollywood?

Various shuttle companies offer one-way service to Hollywood for around \$50. If you are staying at local hostels they may reimburse you for your shuttle fee. You can also check Flyaway for a cheaper option, www.flylax.com (\$8.00).

How much is a typical rental deposit?

You can expect to pay at least two months' rent (first and last) to get into an apartment; often a security/cleaning deposit is also required. Sometimes, if your credit is bad or you're an international student, apartment managers will require three month's rent up-front.

Where do I store my stuff while looking for an apartment?

There are many storage facilities in Los Angeles. We would recommend looking at some of the storage facilities in the San Fernando Valley; they are significantly cheaper than Hollywood (check the yellow pages or internet).

Do I need a co-signer on my leases?

If you are under 21 years of age, you will probably need a co-signer on your apartment lease. If this is your first apartment, it is a good idea for your parents to help you out in your search.

Can International Students lease apartments?

Yes, but you may be required to pay a slightly higher deposit. You will usually also need to provide copies of your passport, I-20 and proof of enrollment together with a financial statement proving that you have sufficient funds to pay rent.

How much is an apartment going to cost me?

On average, a single room apartment or bachelor apartment will be about \$1,200 to \$1,350 a month. One-bedrooms are about \$1,395 to \$1,700, and two bedrooms range from \$1,750 to \$2,700. In most buildings water, septic, and trash removal are paid for by the apartment building. You will usually only have to pay for gas and electricity, which is billed every other month. Most students average about \$40-\$60 per month for their utility bill. Don't forget to figure food costs into your budget.

How do I find a roommate?

Finding a roommate is easier than you think. Much like choosing an apartment, you should always meet someone before deciding to live with him or her. Your next question is probably, "How do I meet a potential roommate?" During Registration (the two weeks before school begins), the Housing Department conducts Roommate and Housing meetings. At these meetings, you can meet other students looking for roommates. You can also ask questions about housing and much more.

Can I find a roommate before I get to LA?

Of course you can! When you receive your acceptance package, you will find a "Roommate Questionnaire" enclosed. Fill it out, return it to the Housing Department, and your name will be placed on the "Roommate List." You will receive a copy of this list by email. You can use both Roommate lists as a means of finding potential roommates that may be from your hometown, nearby or other parts of the world. This way you won't have to do the "Big Move" alone. Both referral services are great resources for finding a suitable roommate but MI maintains the lists as a courtesy and does not investigate or guarantee the accuracy of the posted information. You should always meet a potential roommate in person before you decide to live with them.

FREQUENTLY ASKED QUESTIONS *(continued)*

Can I live outside the Hollywood area?

Sure! The San Fernando Valley is located just north of Hollywood, and is only a short car or bus ride from MI. It can be less expensive and more suburban in atmosphere and Metro service is available. If you have a car, keep in mind that traffic can be bad and parking in Hollywood is very expensive.

What features do the buildings have?

Many of the buildings in Hollywood have swimming pools, Jacuzzis, gyms or workout rooms, and saunas. Also, laundry facilities are usually available in most buildings. As for security, almost every building in Hollywood has a security entry system. Most of these are telephone system devices, so visitors must punch in a security code that either rings the telephone or security phone in your apartment so you can let them in. It's very efficient and convenient.

When should I arrive in LA?

You should really arrive in LA no later than the beginning of registration, but no earlier than four weeks before your scheduled start date. If you arrive too early, you may have some difficulty finding a place to live due to the fact that the previous class has not graduated yet. Keep in mind that there are plenty of apartments in Hollywood, but many will not have vacancies until the current class leaves. Arriving two weeks prior to the start of school is usually your best bet!

Should I bring a car to LA?

Unless you already have a car and plan on driving it to California as your means of getting here, it's not vital to have a car while you're at school. Contrary to popular myth, you can survive in LA without a car - you can go almost anywhere you want to go either by bus, taxi, Uber, Lyft or subway. Having a car can be nice, but insurance rates in LA are high and parking can be very expensive.

If I do have a car, where can I park?

A majority of apartment buildings have gated parking for tenants. Street parking is usually hard to come by, but you may be able to find that as well as metered parking, however parking enforcement is strict and fines are steep. There are several parking lots in the neighborhood and most of them sell a monthly parking pass for around \$90-\$120 per month. Please note, prices change without notice.

HOTELS AND HOSTELS

To be utilized mainly for **short-term lodging in Hollywood**. Please contact Hotel or Hostel directly for pricing and booking. If more information is needed please contact MI at **323-255-7529**.

HILTON GARDEN INN

2005 N. Highland Ave., Hollywood, CA 90068
(323) 876-8600
www.losangeleshollywood.hgi.com
Starting at \$219-\$290 / night
Must be 18 or over to check in (also depends on the season)

BEST WESTERN HOLLYWOOD PLAZA INN

2011 N Highland Avenue, Hollywood, CA 90068
Reservations: (800) 445-4353
Ask for MI Special rate
From \$219 - \$259 / night
Must be 21 or over to check in

BLVD HOTEL & SUITES

2010 N. Highland Ave. Hollywood, CA 90068
(323) 874-4300
info@blvdhotels.com
www.blvdhollywood.com/
From \$299 / night
Must be 21 or over to check in

LOEWS HOLLYWOOD HOTEL

1755 N. Highland Ave., Hollywood, CA 90028
Reservations: (855) 563-9749
(323) 856-1200
www.loewshotels.com/Hollywood-Hotel
From \$289 / night
AAA Discount
Must be 18 or over to check in (also depends on the season)

HOLLYWOOD ROOSEVELT

7000 Hollywood Blvd., Hollywood, CA 90028
(800) 950-7667
(323) 466-7000
www.hollywoodroosevelt.com
From \$295-\$600/ night
Must be 21 or over to check in (also depends on the season)

MAGIC CASTLE HOTEL

7025 Franklin Ave., Hollywood, CA 90028
(800) 741-4915
(323) 851-0800
www.magiccastlehotel.com
From \$189-\$369 / night
Must be 18 or over to check in

WALK OF FAME HOLLYWOOD

6820 Hollywood Blvd., Hollywood, CA 90028
(323) 463-2770
www.hostels.com/hostels/los-angeles/walk-of-fame-hollywood-hostel/32211
Dorm-style housing from \$35 - \$45 / night
From \$115 / night (single, no bathroom)
From \$120 / night (single, with bathroom)
Reserve online for discount
Under 18 allowed

HOLLYWOOD CELEBRITY HOTEL

1775 Orchid Ave., Hollywood, CA
(323) 850-6464
www.hotelcelebrity.com
From \$169 / night
Internet and breakfast (AAA Discount)
Must be 21 or over to check in (Rates increase up to \$199 during important days ie. New Year's Day, Oscars etc).

VIBE HOTEL

5920 Hollywood Blvd., Hollywood, CA 90028
(866) 751-8600
(323) 469-8600
www.vibehotel.com
\$35 / night - dorm
\$100 / night - private room
Free parking (limited)
Must be 18 or over to check in

Prices are subject to change without notice.

Musicians Institute does not own or operate student housing and has no affiliation with any landlord or property owner. Housing information is provided for reference only and MI does not guarantee its accuracy. All agreements or contractual arrangements related to housing rental or lease are strictly between the student or other responsible party and the property owner or landlord.

HOTELS AND HOSTELS *(continued)*

HOLLYWOOD ORCHID SUITES

1753 Orchid Ave., Hollywood, CA 90028

(800) 537-3052

(323) 874-9678

www.orchidsuites.com

From \$159-\$229 / night

Depending on availability

Must be 18 or over to check in

MOTEL 6

1738 N. Whitley Ave., Hollywood, CA 90028

(323) 464-6006

www.motel6.com

\$113-\$129 / night

Must be 18 or over to check in

BANANA BUNGALOW

5920 Hollywood Blvd., Hollywood, CA 90028

(877) 977-5077

(323) 469-2500

www.bananabungalow.com

\$35/ night

\$100 / night (private room)

Dorm-style options available

Must be 18 or over to check in

LEGEND HOTEL

1822 N. Cahuenga Blvd., Hollywood, CA 90028

(323) 467-2252

www.legendhotelhollywood.com

\$115-\$175/ night

\$1150 + tax / weekly rate

Call to ask for MI special rates

Free parking

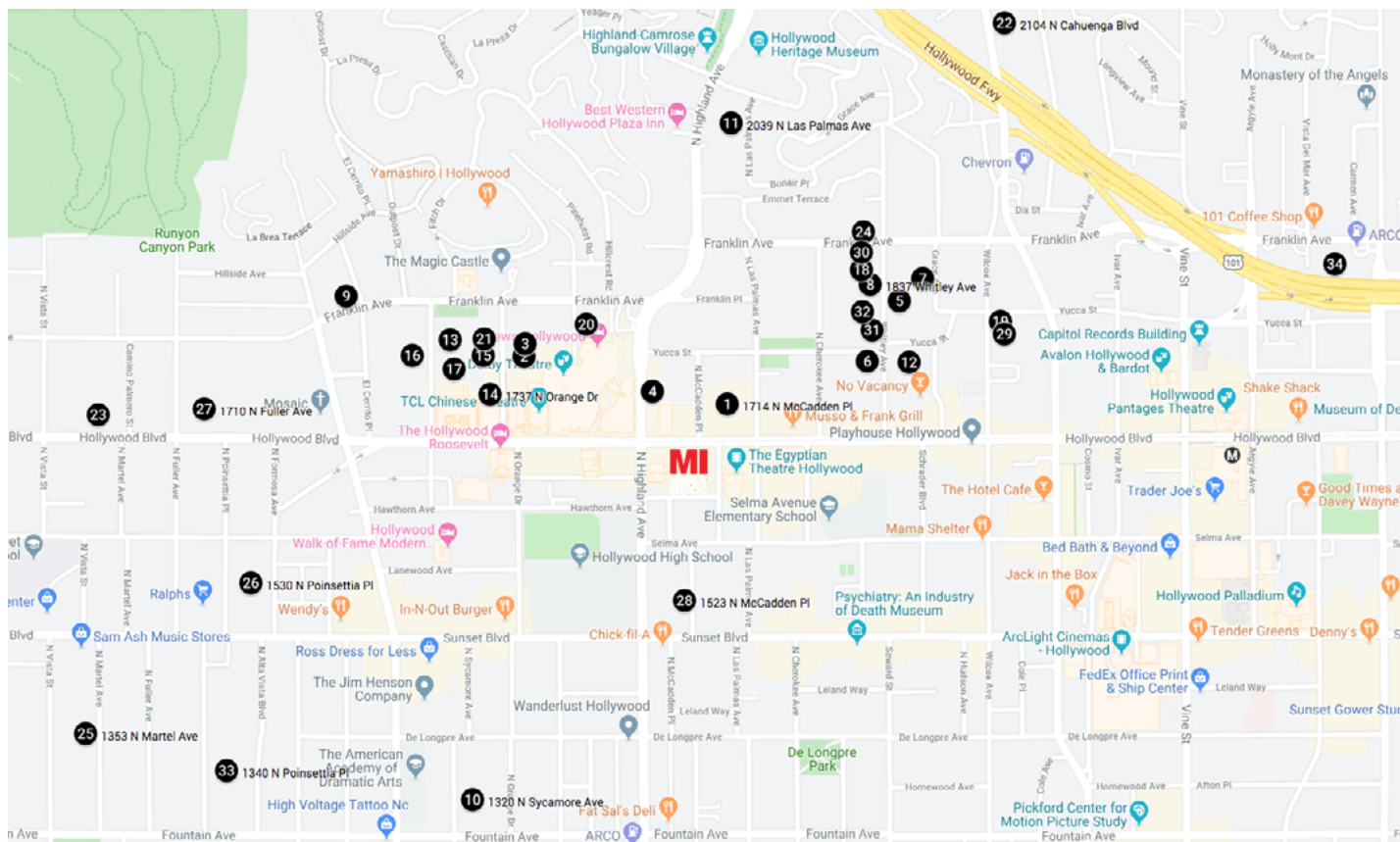
Under 18 allowed with parent authorization

Prices are subject to change without notice.

Musicians Institute does not own or operate student housing and has no affiliation with any landlord or property owner. Housing information is provided for reference only and MI does not guarantee its accuracy. All agreements or contractual arrangements related to housing rental or lease are strictly between the student or other responsible party and the property owner or landlord.

MUSICIANS INSTITUTE PREFERRED HOUSING RADIUS

The map below indicates a section of a two mile radius which is suggested for locating local housing at Musicians Institute. The nightly MI shuttle bus will also return students to any Apartment located within the vicinity of this map and within 2 miles of the school*.



LEGEND

MI

MI Campus

#

Apartment Listings
(Refer to listings beginning on page 20)

*To confirm if you are within the 2 mile radius of the school please refer to Google Maps for exact distances.

Please contact the MI Housing Department for further info:

MI Housing Department

EMAIL housing@mi.edu

PHONE 323-462-1384

LOCATED Student Support Center (*Passage West, First Floor*)



McCadden Residence Hall

1527 North McCadden Place, Los Angeles, CA 90028

FEATURING

- » High Speed WiFi
- » Kitchen includes a full size refrigerator, microwave oven, and induction cooking surface
- » Full Bathroom
- » Closet Space
- » Coin-operated laundry facilities
- » Resident Assistant will be present

ADDITIONAL INFORMATION

Applications are available from the Housing Coordinator, Rossana Brassea.

You can choose your own roommate or one can be chosen for you.

Roommate information questionnaires are available from the Housing Coordinator.

Students can live in the Residence Hall for the length of their program or 1 year, whichever is shorter.

Residence Hall are available on a first come, first serve basis. See the Housing Coordinator for more details.

COST PER QUARTER

Double Occupancy (2 students in a room)

\$2,805 per quarter

Single Occupancy (1 student in a room)

\$5,610 per quarter

DEPOSIT

\$500 Refundable Security Deposit**

\$1,500 Advance Payment (Double Occupancy)**

\$2,500 Advance Payment (Single Occupancy)**

*** Along with a \$500 refundable security deposit, each applicant must pay the noted advance rent payment for either single or double occupancy rooms. This will cover their first month's rent, plus 50% of the second month. The remaining balance will be due upon moving in. Students are required to pay the security deposits plus the advance rent payment to be added to the waiting list.*

APARTMENT LISTINGS

Attention: Musicians Institute does not own or operate student housing and has no affiliation with any landlord or property owner. Housing information is provided for reference only and MI does not guarantee its accuracy. All agreements or contractual arrangements related to housing rental or lease are strictly between the student or other responsible party and the property owner or landlord. Rental prices are subject to change without notice and MI cannot guarantee their accuracy.

1. ALAYA HOLLYWOOD

1714 N. McCadden Pl.
Hollywood, CA 90028
323-871-4041
Lease Terms: 6 -12 months
Studios \$2633-\$2883
One bd \$2405-\$3055
Two bd \$3550-\$3900

2. THE MADISON

1746 N. Orange Dr.
Hollywood, CA 90028
323-876-2006
Lease Term: 6 months (w/10% fee) -
12 months
Studio with balcony: \$1890
Studio: \$1830 - \$1870
One Bdrm: \$2315 - \$2725
Two Bdrm: \$2715 - \$3215

3. HOLLYWOOD PLAZA APARTMENTS

1758 N. Orange Dr.
Los Angeles, CA 90028
626-899-6701
Lease Term: 6 months - 12 months
Furnished
Single: \$1200-\$1300
One Bdrm: \$1400-\$1500

4. 1724 N HIGHLAND (REDWOOD URBAN)

1724 N. Highland Ave
Hollywood, CA 90028
323-469-4000
Lease Terms Available: 3 - 13 months
One Bedroom: \$2299 - \$2725 (up to
3
occupants)
Two Bedroom: \$3299 - \$3825 (up to
5
occupants)

5. 1820 WHITLEY AVE.

Los Angeles, CA 90028
(Redwood Urban)
323-467-9000
Lease Term: 3 months - 12 months
(*Lease terms shorter than 12 months
are subject to fees)
Studio: \$1800 - \$1900
One Bdrm: \$2000 - \$2200
Two Bdrm: \$2700 - \$3000
Loft: \$2200 - \$2400

6. 6600 YUCCA ST.

Los Angeles, CA 90028
(Redwood Urban)
323-467-9000
Lease Term: 3 months - 12 months
(*Lease terms shorter than 12 months
are subject to fees)
Studio: \$1800 - \$1900
One Bdrm: \$2000 - \$2200
Two Bdrm: \$2700 - \$3000
Loft: \$2200 - \$2400

7. 1823 N. GRACE AVE.

Los Angeles, CA 90028
(Redwood Urban)
323-467-9000
Lease Term: 3 months - 12 months
(*Lease terms shorter than 12 months
are subject to fees)
Studio: \$1686 - \$1786
One Bdrm: \$1896 - \$2386
Two Bdrm: \$2626 - \$2986
Loft: \$2086 - \$2286

8. 1837 N. WHITLEY AVE.

Los Angeles, CA 90028
(Redwood Urban) 323-467-9000
Lease Term: 3 months - 12 months
(*Lease terms shorter than 12 months
are subject to fees)
Studio: \$1800 - \$1900
One Bdrm: \$2000 - \$2200
Two Bdrm: \$2700 - \$3000
Loft: \$2200 - \$2400

9. EL CERRITO APARTMENTS

1805 N. El Cerrito Pl.
Hollywood, CA 90068
323-969-0429
Lease Term: 1 year
Studio: \$1650.00
One Bdrm: \$2000
Two Bdrm: \$1850 - \$1900

10. SYCAMORE VILLA APARTMENTS

1320 N. Sycamore Ave.
Hollywood, CA 90028
323-466-9173
Lease Term: 1 year
Studio: \$1795
One Bdrm: \$1995
Two Bdrm: \$2595

11. LAS PALMAS VILLA APARTMENTS

2039 N. Las Palmas Ave.
Hollywood, CA 90028
323-969-0722
Lease Term: 1 year
Studio: \$1505
Small One Bdrm: \$1610
Regular One Bdrm: \$1730

12. HOLLYWOOD TERRACE APARTMENTS

6550 Yucca St.
Hollywood, CA 90028
323-469-5782
Lease Term: 1 year
Two Bdrm: \$2050

13. MEDITERRANEAN APARTMENTS

1776 N. Sycamore Ave.
Hollywood, CA 90028
323-874-5140
Lease Term: 6 months - 1 year
Bachelor: \$1100
Studio: \$1350
One Bdrm: \$1750
Two Bdrm: \$2350

14. HOLLYVIEW APARTMENTS

1737 N. Orange Dr.
Hollywood, CA 90028
323-874-4578
Lease Term: 1 year
One Bdrm: \$1995

15. HOLLYWOOD BILTMORE

1745 N. Orange Dr.
Hollywood, CA 90029
323-512-8891
Lease Term: 1 year
Utilities included
Studio: \$1600 - \$1695
One Bdrm: \$2025
+\$100.00 per added occupant
(studio)
Parking: \$75.00 / month
Wifi Available

APARTMENT LISTINGS *(continued)*

Attention: Musicians Institute does not own or operate student housing and has no affiliation with any landlord or property owner. Housing information is provided for reference only and MI does not guarantee its accuracy. All agreements or contractual arrangements related to housing rental or lease are strictly between the student or other responsible party and the property owner or landlord. Rental prices are subject to change without notice and MI cannot guarantee their accuracy.

16. WESTBURY APARTMENTS

1765 Sycamore Ave.
Hollywood, CA 90028
323-874-9909
Lease Term: 1 year
Studio: \$1500 - \$1650
One Bdrm: \$1750 - \$1850
Two Bdrm: \$2300 - \$2400
Includes Parking

17. SYCAMORE TERRACE

1750 Sycamore Ave.
Hollywood, CA 90028
323-969-8877
Lease Term: 1 year
Studio: \$1495
One Bdrm: \$1795
Two Bdrm: \$2395
\$100 for Includes Parking

18. WHITLEY LOFTS APARTMENTS

1853 Whitley Ave.
Hollywood, CA 90028
323-461-3253
Lease Term: 6 months/month to month year
Studio: \$1675 - \$1775
One Bdrm: \$1950
Two Bdrm: \$2650
\$25 for refrigerator

19. HOLLYWOOD ARMS APARTMENTS

6434 Yucca St.
Hollywood, CA 90029
213-399-7788

20. ORCHID PROPERTIES

1772 N. Orchid St.
Hollywood, CA 90028
323-309-4289
Lease Term: 1 year
Bachelor Studio: \$1350
One Bdrm: \$1,700
Utilities included
Pet Friendly

21. ORANGE APARTMENTS

1769 N. Orange Dr.
Hollywood, CA 90028
323-855-2705

22. CAHUENGA LUXURY APARTMENTS

2104 N. Cahuenga Blvd.
Hollywood, CA 90046
323-871-0454

23. HACIENDA APARTMENTS

7367 Hollywood Blvd. #104
Los Angeles, CA 90046
323-895-2186

24. FRANKLIN PARK APARTMENTS

6615 Franklin Ave.
Hollywood, CA 90028
323-851-1398
One-bedroom: \$1795 - \$1825

25. JOSHUA APARTMENTS

1353 N. Martel Ave.
Hollywood, CA 90028
323-851-4141
Lease Term: 6 months - 1 year
One Bdrm: \$2000 - \$2300
Two Bdrm: \$2900 - \$3200

26. VERSE HOLLYWOOD APARTMENTS

1530 N. Poinsettia Pl.
Los Angeles, CA 90046
323-851-3212
Lease Term: 6 months - 9 months - 1 year
Studio: \$2200 - \$2500
One Bdrm: \$2300 - \$2600
One Bdrm + Loft: \$2610 - \$3100
Two Bdrm: \$3700

27. VANTAGE APARTMENTS

1710 N. Fuller Ave.
Hollywood, CA 90028
323-850-1710
Lease Term: 3 months - 1 year
Studio: \$1855
One Bdrm: \$1880
Two Bdrm: \$3085

28. MCCADDEN APARTMENTS

1523 N. McCadden Pl.
Hollywood, CA 90028
323-363-0757
Lease Term: 6 months - 1 year
Utilities included
Studio: \$1375-\$1400
One Bdrm: \$1750 - \$1825
Short term LEASES!!

29. MAYFAIR APARTMENTS

1760 N. Wilcox Ave.
Hollywood, CA 90028
206-335-0801

30. THE HAVENHURST

1861 N. Whitley Ave.
Los Angeles, CA 90028
323-465-4723
Lease Term: 6 months - 1 year
Bachelor: \$1220 - \$1245
Single: \$1445 - \$1610
One Bdrm: \$1755 - \$1810

31. THE FONTENOY

1811 N. Whitley Ave.
Hollywood, CA 90028
213-380-0584
Lease Term: 1 year
Single: \$1725 - \$1825
One Bdrm: \$1840 - \$2200
Two Bdrm: \$3050 - \$3550

APARTMENT LISTINGS *(continued)*

Attention: Musicians Institute does not own or operate student housing and has no affiliation with any landlord or property owner. Housing information is provided for reference only and MI does not guarantee its accuracy. All agreements or contractual arrangements related to housing rental or lease are strictly between the student or other responsible party and the property owner or landlord. Rental prices are subject to change without notice and MI cannot guarantee their accuracy.

32. THE FLEUR DE LIS

1825 N. Whitley Ave.
Hollywood, CA 90028
323-466-2749
Lease Term: 1 Year
Single: \$1725 - \$1825
One Bdrm: \$1840 - \$2200
Two Bdrm: \$3050 - \$3550

33. KAITLIN COURT

1340 N. Poinsettia Place
Hollywood, CA 90028
323-851-9453
Lease Term: 6 months – 1 year
Studio: \$1565
One Bdrm: \$1850
Two Bdrm: \$2180

34. LA BELLE

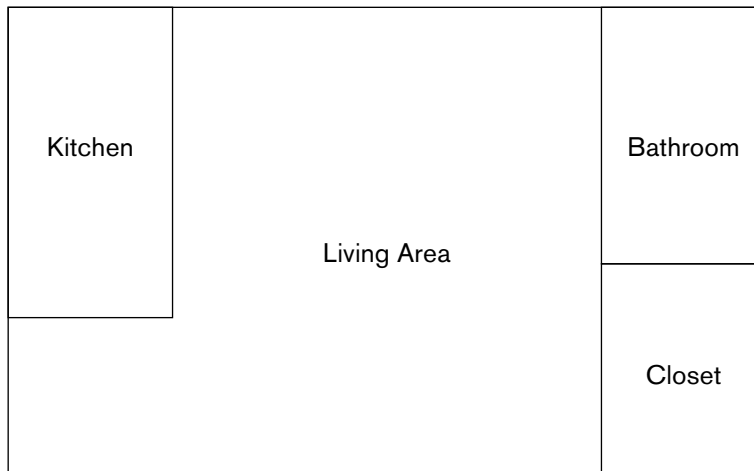
6138 Franklin Ave
Hollywood, CA 90028
323-466-4339
Studio: \$2100 - \$2300
One Bdrm: \$2200 - \$2800
Two Bdrm: \$3500 - \$4200

TYPES OF UNITS IN APARTMENTS

(Not MI Residence Halls)

There are sometimes questions about the difference between a studio and a one-bedroom apartment. Here is a diagram describing both...

STUDIO



ONE BEDROOM



HOMESTAYS FOR STUDENTS

HOMESTAYMATCH is a website for students who would like to choose their own homestay. Students can browse through available homestays near the school, compare locations and prices and request a homestay they like. HomestayMatch personally meets every host family and offers support during the student's stay. Please contact:

HOMESTAYMATCH

contact@homestaymatch.com

Phone: (310) 824 - 4908

www.homestaymatch.com

UNIVERSAL STUDENT HOUSING (USH) has been connecting students with host families since 1998. Host families are carefully selected based on student's preferences and distance to school. Housing support is offered from the move-in to the move-out. Feel free to contact USH at:

UNIVERSAL STUDENT HOUSING

contact@usaish.com

Phone: (310) 824-4908

www.ushestudent.com

PHONE LISTINGS

LEGAL AID FOUNDATION OF LOS ANGELES

www.lafla.org

1102 S. Crenshaw Blvd.

Los Angeles, CA 90019-3111

(800) 399-4529

LOS ANGELES HOUSING DEPT.

lahd.lacity.org

3550 Wilshire Blvd. Suite 1500

Los Angeles, CA 90010

(866) 557-RENT

HOUSING/EVICTION DEFENSE

1 East Regent St. Room 107

Inglewood, CA 90301

(213) 385-1719

1725 Main St. Room 210

Santa Monica, CA 9040

(310) 899-6200

HOUSING RIGHTS CENTER

www.hrc-la.org

520 S. Virgil Ave. Suite 400

Los Angeles, CA 90020

(800) 477-5977

MANAGEMENT COMPANIES

You should first contact the numbers listed in the Apartment Listings section. Only contact the management companies if you cannot find an apartment.

MGGS PROPERTIES

4107 Los Feliz Blvd.
Los Angeles, Ca 90028
(323) 661-1752

HILDER PROPERTY MANAGEMENT

7805 W. Sunset Blvd.
Los Angeles, CA 90028
(323) 850-5755

LAS PALMAS MANAGEMENT

1210 N. Las Palmas Ave.
Los Angeles, Ca 90038
(323) 461-9199

RAFORD MANAGEMENT

5858 Hollywood Blvd.
Los Angeles, CA 90028
(323) 466-7111

LEEDS PROPERTY MANAGEMENT

3385 Overland Ave.
Los Angeles, CA 90034
(310) 815-9015
www.leedspm.com

CIM HOLLYWOOD

6922 Hollywood Blvd. 9th floor
Los Angeles, CA 90028
(323) 860-4900
www.cimgroup.com

TROCADERO MANAGEMENT

6700 Franklin Pl.
Los Angeles, CA 90028
(323) 462-6227

LB PROPERTY MANAGEMENT

4370 Woodman Ave Suite 200
Sherman Oaks, CA 91423
(818) 981-1802
www.lbprop.com

LOS FELIZ LTD.

3949 Los Feliz Blvd.
Los Angeles, CA 90078
(323) 660-9115

MAY HANE GROUP

4141 Santa Monica Blvd
Los Angeles, CA 90029
(323) 668-9119

ARTISTE APARTMENTS

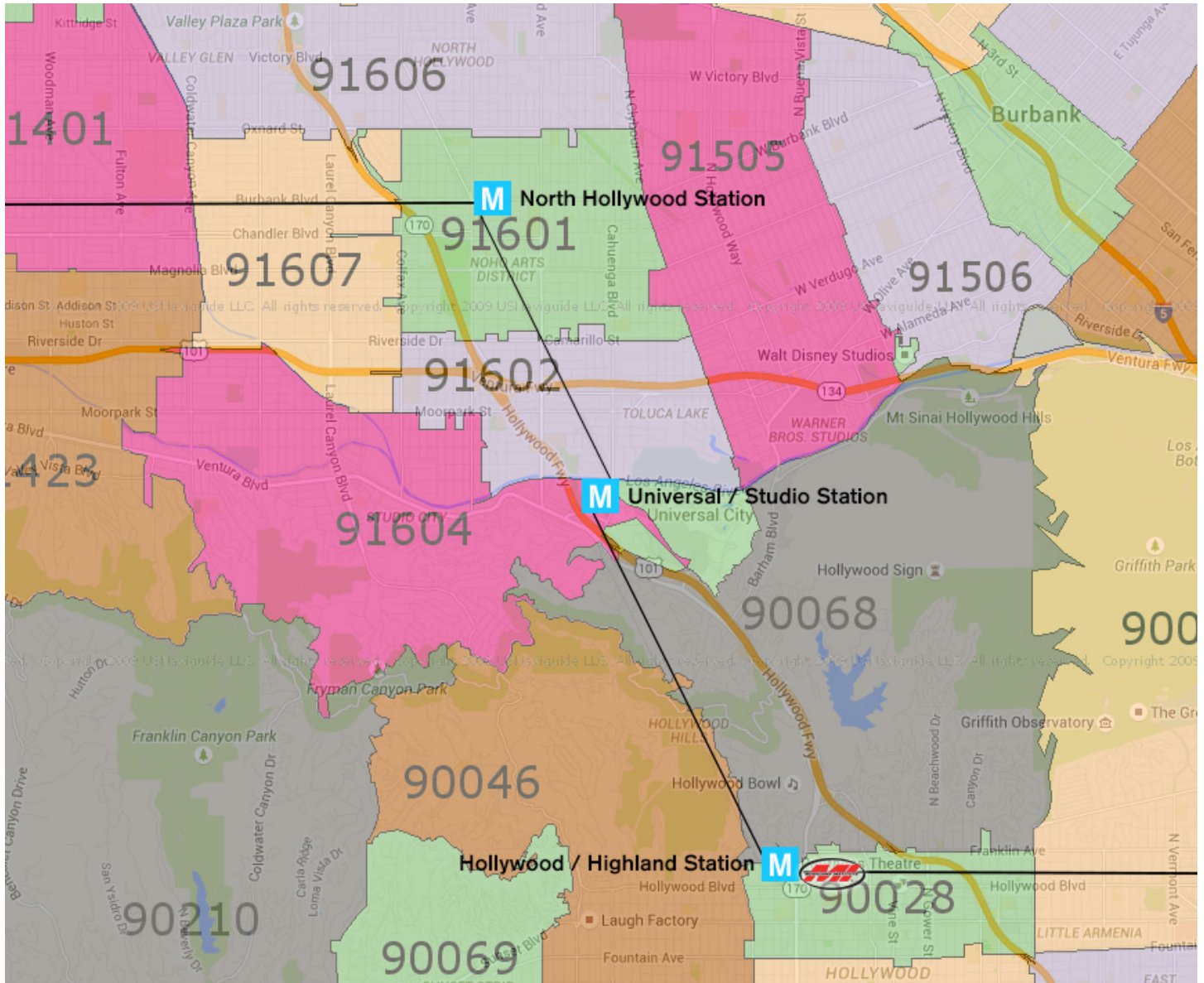
PO Box 2109
Hollywood, CA 90078
(323) 692-5736
www.artisteapartments.com

ALLIANCE PROPERTY MANAGEMENT

10810 W. Washington Blvd.
Culver City, CA 90232
(310) 837-2500
www.alliancela.com

ZIP CODE MAP & METRO ROUTE

The map below indicates the zip codes of the neighborhoods surrounding Musicians Institute.



Approximate Trip Times:

Hollywood/Highland Station ... Universal/Studio Station: **~5 minutes**

Universal/Studio Station ... North Hollywood Station: **~7 minutes**

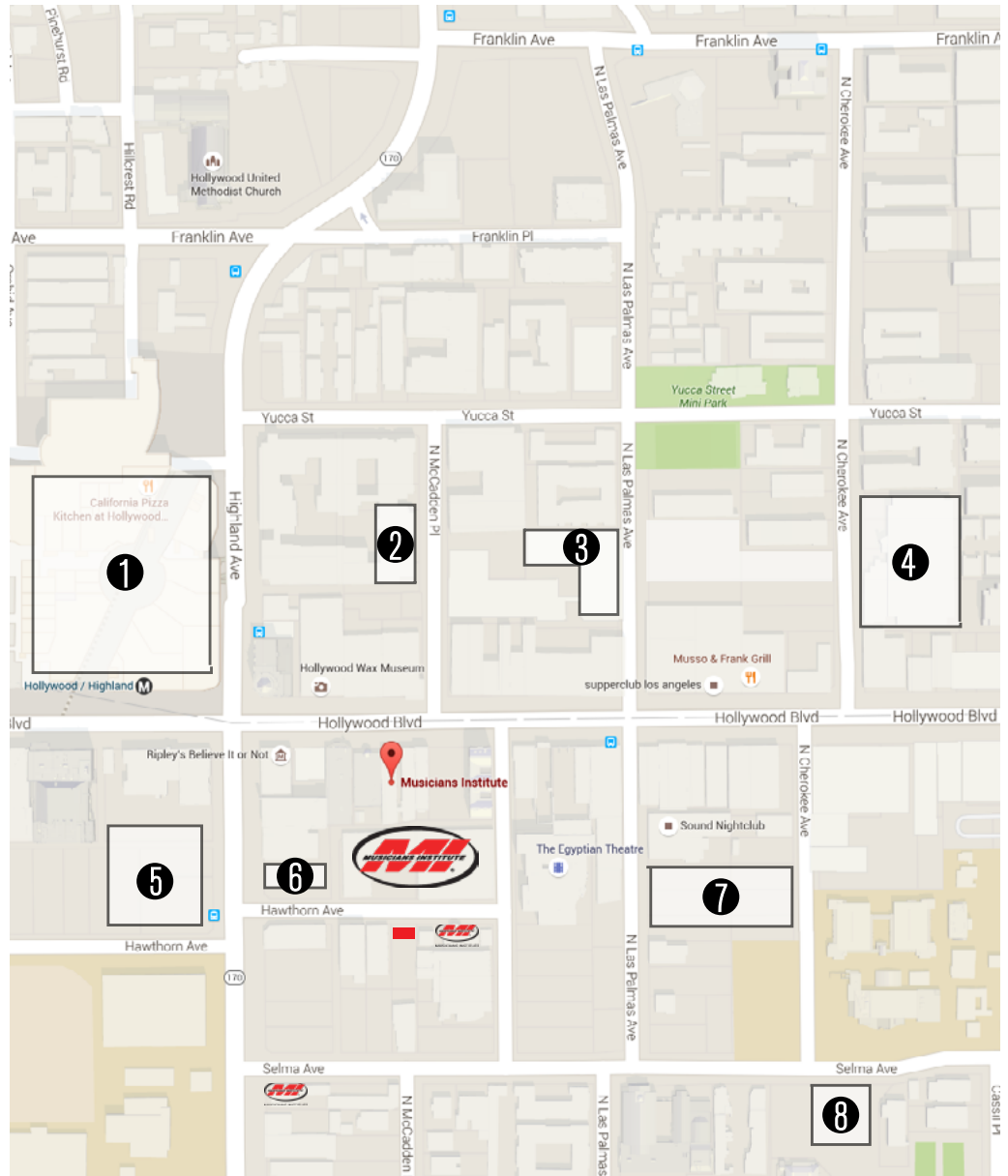
-Total Trip:

Hollywood/Highland Station ... North Hollywood Station: **~12 minutes**

PARKING AROUND MI

Metered and unmetered street parking is also available on the streets surrounding MI. *Free* street parking can be found on Mansfield, Orange, De Longpre, Cassil, and parts of Selma. **Pay attention to street signs!** Time limits, prices, and availability can change from hour to hour.

- 1 Hollywood & Highland Center**
2 hr free w/ Validation
\$18 max / day
- 2 First Class Parking**
\$ 15 / day
\$150 / month
Student Discount Available
- 3 Car Park**
Around \$10-20 / day
- 4 Modern Parking**
\$16 / day 6pm - 6am
\$144 / month +\$25 key card
- 5 California Parking Systems**
\$20 / day
\$150 / month
- 6 West Coast Parking**
\$15 / day 9am-5pm
Students \$250 / month
- 7 Classic Parking**
\$15 / day
\$200 / month
- 8 First Class Parking**
\$10 / day
\$150 / month



■ Campus Tour Reserved Parking

ROOMMATE QUESTIONNAIRE

The Housing Department maintains a list of new students looking for roommates. To be included on this list, please complete and return the Roommate Questionnaire to housing@mi.edu to register with our Housing Department (it is your responsibility to contact other students on the list and make arrangements for finding joint housing).

First Name: _____ **Last Name:** _____

Street Address: _____

City: _____ **State/Province:** _____ **Zip/Postal Code:** _____

Country: _____ **Phone:** _____ **Email/Fax:** _____

Program:

- | | | | |
|---------------------------------------|--|--|--|
| <input type="checkbox"/> Bass | <input type="checkbox"/> Drum | <input type="checkbox"/> Guitar | <input type="checkbox"/> Keyboard Technology |
| <input type="checkbox"/> Vocal | <input type="checkbox"/> Audio Engineering | <input type="checkbox"/> Independent Artist | <input type="checkbox"/> Music Business |
| <input type="checkbox"/> Guitar Craft | <input type="checkbox"/> Composition | <input type="checkbox"/> DJ Performance & Production | |

Start Date: _____ **Arrival Date:** _____ **Monthly Rental Budget** (*Be Realistic*): _____

Roommate Preferences: Male Female Non-Smoking
 Other: _____

Housing Preferences: Private Room Shared Room

Additional Comments: _____

* *Remember:* Musicians Institute Housing Dept. does NOT make housing arrangements for students. Returning this completed questionnaire to us means that your name will be placed on a "ROOMMATE WANTED" list. The list will be sent to you prior to your arrival in Hollywood. It will enable you to contact other students looking for roommates. All final decisions regarding roommates or apartments are YOUR responsibility.

PLEASE RETURN TO:
Musicians Institute Housing Department
Student Support Center, *Passage West, First Floor*



MUSICIANS INSTITUTE
COLLEGE OF CONTEMPORARY MUSIC