

DT[®]
Components
Drivetrain Products
Marketed by The Timken Corporation

Hand Installed Wheel Seals



North Coast Bearings, Inc.

1050 Jaycox Road • Avon, Ohio 44011

Toll Free: 800-627-0700 • 440-930-7600

Toll Free Fax: 800-627-9401 • Fax: 440-930-7615

www.dtcomponents.com

©Registered Trademark of The Timken Company



DT Components wheel seals are manufactured at an ISO9000 facility in England that is in the process of being certified for the TS16949 high automotive standard and is part of a \$500 million global company supplying products to OEM's and aftermarket customers worldwide and is the only line of heavy duty wheel seals that are packaged under the DT Components brand name. Arvin Meritor, Eaton, New Venture Gear and Cummins are just a few of the many OEM customers using DT Components products.

In July 1997, The Timken Company and North Coast Bearings, Inc. formed a strategic alliance to market and distribute differential rebuild kits, transmission rebuild kits and related products to the heavy, medium and light duty aftermarkets under the product name DT Components®

Since then, the product line has grown to over 1,700 cataloged rebuild kits and 19,000 part numbers and is now the most recognized and respected brand of differential and transmission rebuild kits in the USA.

North Coast Bearings, Inc. is currently expanding its Avon, Ohio facility. When completed in 2005, it will exceed 110,000 square feet which will better service our customers and support our continued growth. We also utilize distribution centers located in Crossville, Tennessee and Sparks, Nevada along with additional Timken distribution centers throughout the world.

Our mission is to provide the best value in differential and transmission rebuild kits and related products. Best value means OEM approved products, the best order fill, the fastest in-house turn-around time, US manufacturers' product where available, superior quality and personalized service.



DT Components wheel seals are designed to be the simplest seal you will ever install. The three piece cartridge outer wall provides maximum strength to support installation with any wheel seal manufacturers installation tool, while the wide rubber outside diameter completely seals inside the wheel hub and helps seal hub bore imperfections. The ribbed design also allows the seal to be easily installed without tools, but grips the hub bore so the seal cannot back out once the seal is seated.

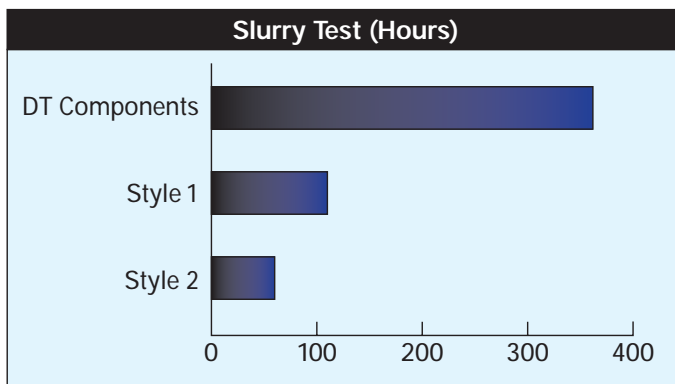
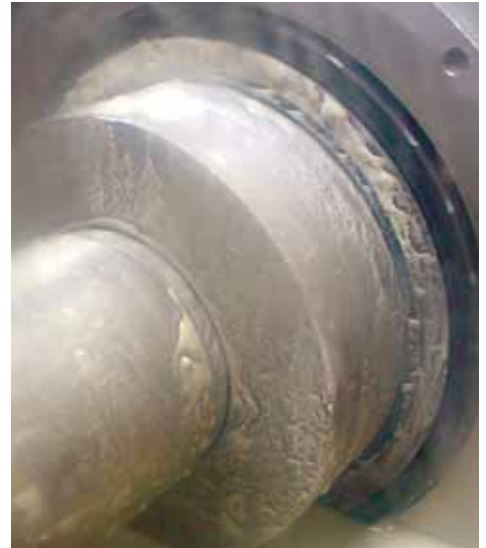


Manufactured in a state of the art facility in England, DT Components wheel seals are subjected to strict quality control procedures during every step of the manufacturing process to ensure OEM's and aftermarket customers alike will receive the highest quality product.

Extensive testing has been performed on the DT Components wheel seals to guarantee that our seals will out perform other brands of seals no matter how harsh the environment.



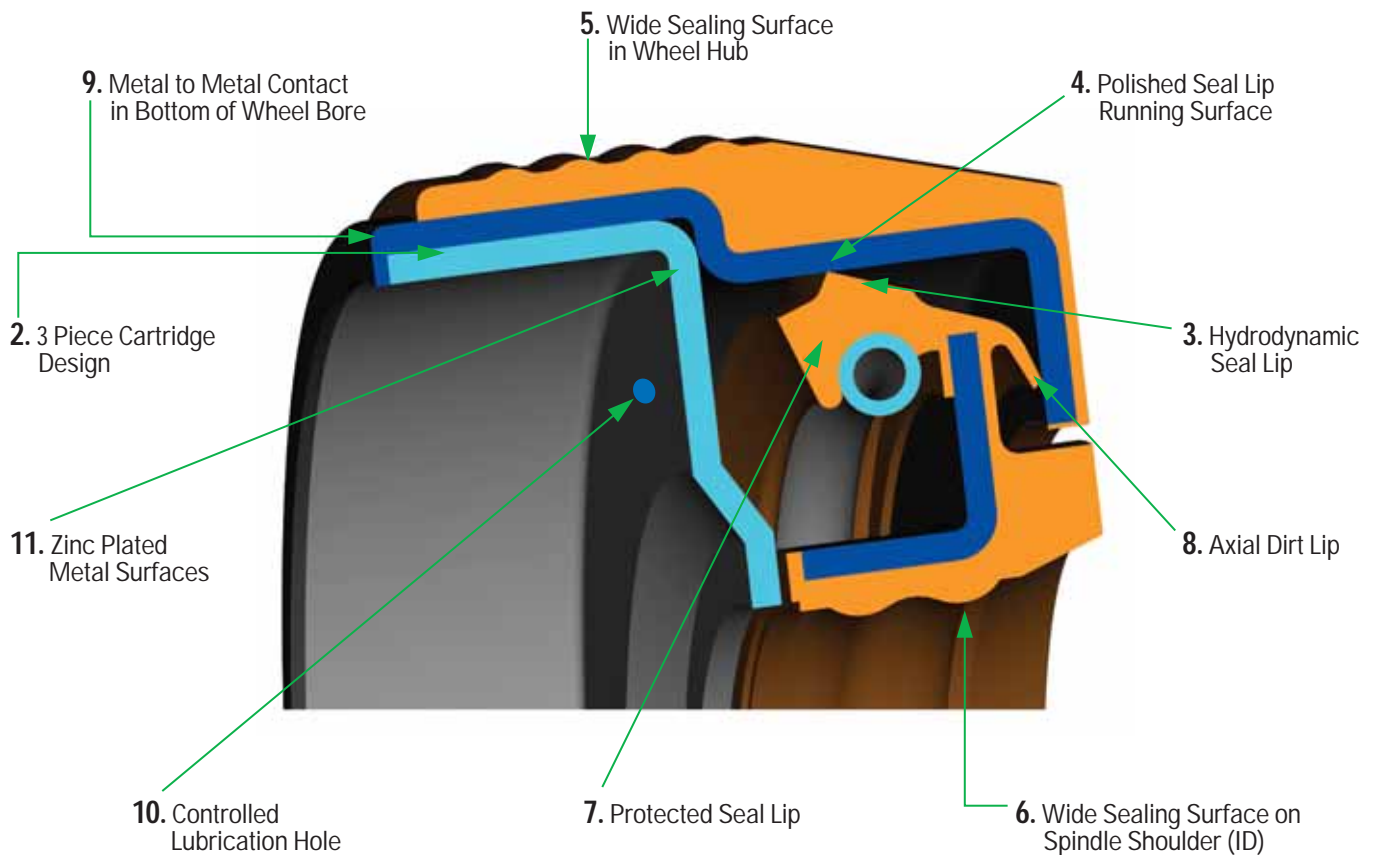
We installed the DT Components wheel seals and the competitor's wheel seals in an environmental testing rig and ran them head to head to see which seal would fail first. The seals were tested running half buried in sand as well being submerged in a slurry consisting of a mixture of salt, sand, aggressive dust and seawater to simulate the worst possible conditions for a wheel seal.



The DT Components wheel seal's hydrodynamic pumping lip and polished running surface kept contaminants from penetrating the seal and lasted up to three times longer than the competitor's wheel seals.

DT Components wheel seals superior design and simple installation provides customers a trouble free and better performing life than other brands of wheel seals.





Wheel Seal Key Features

1. The wheel seals are designed to be easily hand installed or installed using any brand of wheel seal installation tools which reduces installation time and costs.
2. The seals outer wall is constructed with a robust 3 piece cartridge design to provide maximum strength.
3. The primary sealing lip is a hydrodynamic lip that pumps the oil back to the bearings helping with the bearing lubrication and has a centrifugal lip configuration that provides constant lip load at varying wheel speeds.
4. The primary sealing lip makes contact with a polished running surface which insures consistent seal contact and reduces friction and heat and extends the seals life.
5. The wheel seal has a wide sealing surface contact in the wheel hub providing maximum sealing and helps seal imperfections in the wheel hub.
6. The wheel seal also has a wide sealing surface on the spindle shoulder which helps seal spindle imperfections and provides maximum sealing.
7. The primary sealing lip is completely enclosed to prevent contamination and installation damage.
8. The axial dirt lip has a fixed wiper lip interference that excludes dirt and prevents pre-installation contamination.
9. The steel outer wall makes a metal to metal contact in the bottom of the wheel hub to insure proper seating and helps dissipate heat through the wheel hub.
10. Controlled lubrication holes maintains proper lubrication to the sealings lips and directs the oil back to the bearings.
11. All exposed metal surfaces are zinc plated to prevent corrosion.

Interchange

DT Components	CR Scotseal Scotseal Plus	National Standard Design Five Star	Stemco Guardian Grit Guard	Triseal Standard Service Unitized	Dana Outrunner
TM302	42623	370065A	307-0723	69596	851
	42622	380065A	372-7099	65262U	
TM305	46305	370025A	307-0743	69598	859
	46304	380025A	372-7097	65060U	
TM309	38780	370023A	309-0912	69794	849
	38779	380023A	392-9099	65152U	
TM312	35066	370001A	308-0836	69699	847
	35059	380001A	382-8036	65263U	
TM315	43764	370048A	308-0864	69697	863
	43763	380048A	382-8064	65092U	
TM317	45103	370131A	308-0856	69696	857
	45102	380131A	382-8056	65078U	
TM318	42672	370031A	309-0904	69788	852
	42671	380031A	392-9112	65071U	
TM329	40136	370036A	307-0713	69561	850
	40133	380036A	372-7098	65261U	
TM333	47697	370003A	309-0973	69799	861
	47695	380003A	392-9131	65156U	
TM350	45099	370022A	309-0903	69796	856
	45097	380022A	392-9094	65270U	

Distributed by:

