

TL6R / TL8 / TL10V-2 / TL12R-2 / TL12V-2

**takeuchi**<sup>TM</sup>

*From World First to World Leader*

# TRACK LOADERS

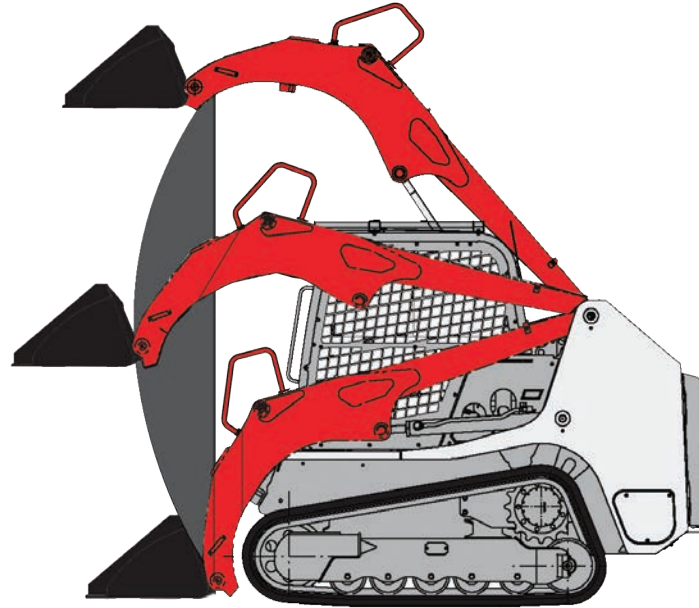




# Radial Arm Path

TL6R / TL8 / TL12R-2

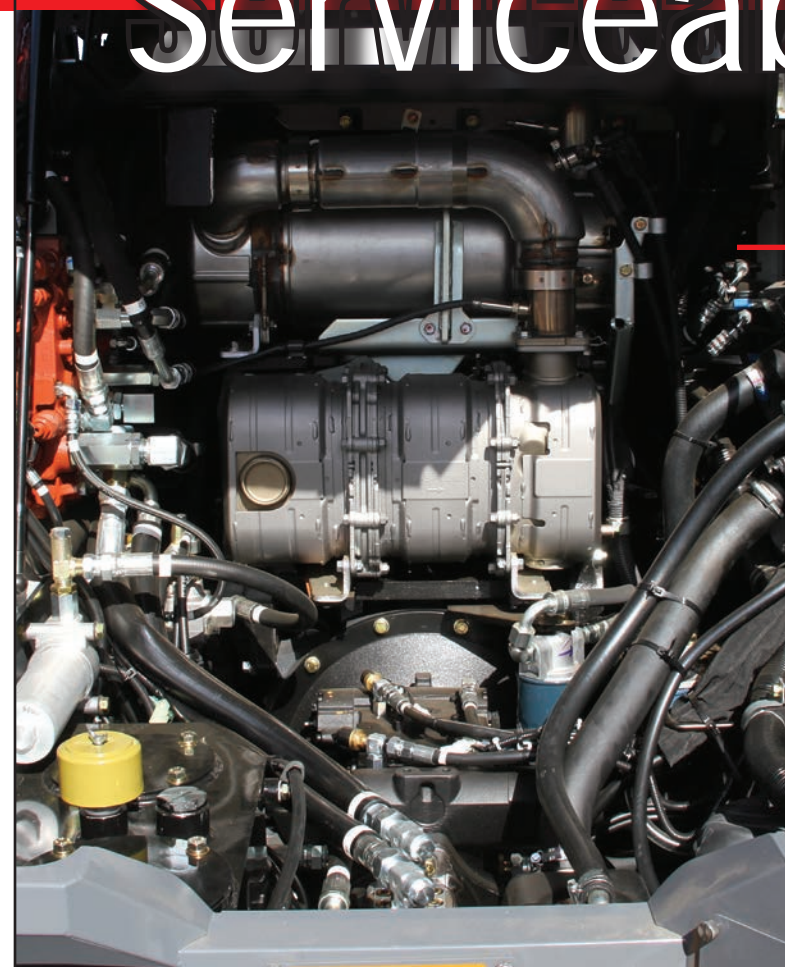
Radial arm machines feature a single arm pivot point and have higher breakout forces making them ideal for tough excavating and grading applications. They also have excellent mid-height reach which is well suited to loading and unloading flatbed trucks.



# Serviceability

## Remote Filter Access

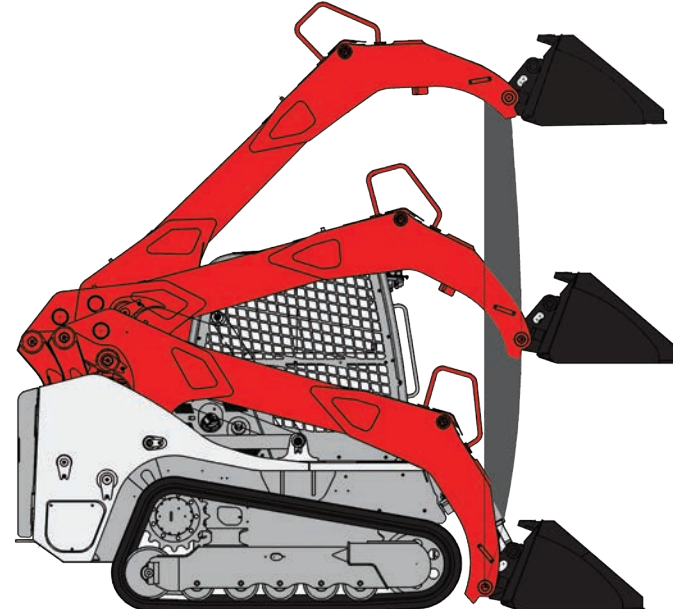
Takeuchi tilt-up operator's station provides excellent access to all of the remote filters. Under the operator's station DOC, DPF, and SCR can be reached for easy maintenance as well as the hydraulic working equipment with control valve.



# Vertical Arm Path

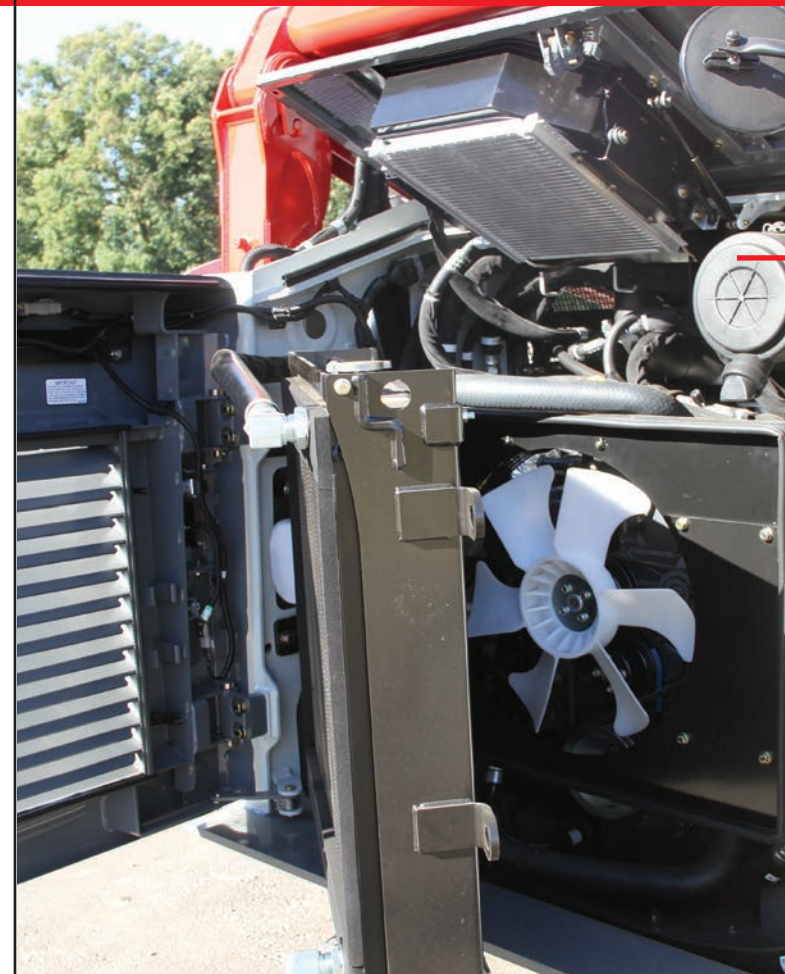
TL10V-2 / TL12V-2

Vertical arm machines have minimal change in the loader's center of gravity because the load is kept closer to the machine throughout the arm path. They are ideal for loading trucks and hoppers with high sides and generally provide better reach at dump height.



## Daily Service Check Points

Takeuchi's rear heavy duty swing out door supplies outstanding entry for the machines daily service check points. The double element air cleaner is mounted in a filter housing providing unobstructed access to the filters. Our side by side heavy duty cooling module allows for easy cleaning and ensures long component life. Takeuchi track loaders also come standard with water fuel separator and oil filter to help reduce down time.





# Durability

Takeuchi track loader undercarriages are purpose built and feature integrated cross members and thick steel reinforcements to ensure product longevity and durability.



## Undercarriage and Arm Features



### PURPOSE BUILT FRAME

All Takeuchi track loaders are purpose built and feature integrated cross members and thick steel reinforcements to ensure product longevity in the field. Our frames have three integration points plus the travel motor is mounted to the main frame adding to the durability of the machine.



### HEAVY DUTY ARM

All of Takeuchi track loader arms are box frame for extra rigidity and reinforced with double gussets for superior strength. Unique to Takeuchi track loaders is our large arm cylinders that provide a larger bucket breakout force that allows the operator to work more efficiently.

# Performance

Takeuchi has led the way in compact track loader innovation and design since 1986. Takeuchi designs compact track loaders that provide exceptional comfort, convenience, performance, and versatility.

Takeuchi compact track loaders are rugged, dependable, and productive.

They are recognized throughout the world for their performance, value, and longevity in the field.



## Machine Features



### ACTIVE POWER CONTROL

Active Power Control comes standard on all Takeuchi track loaders. This feature helps maintain engine power and efficiency. Active Power Control monitors the machine's load and keeps the engine within its optimal range for maximum power, torque and speed.



### QUIET RIDE TRACK

Takeuchi track loaders come with a quiet ride track design to offer a smoother ride and reduced noise for the operator. The mandrels and pads have both been updated to contribute to a more quiet operation. Takeuchi uses pads in place of track bars to reduce noise and improve vibration.



# Operator's Station

Takeuchi strives for excellence and continued improvement with all its products. This is evident in the completely redesigned canopies and cabs. The interior is spacious and clean with automotive styling and intuitive features that simplify operation. A color multi-informational display keeps the operator informed of a wide range of machine functions while the pilot controls provide crisp, responsive performance that today's operators demand.



## Hydraulic Pilot Controls

Hydraulic pilot controls have long been the standard on Takeuchi track loaders. Today's Takeuchi loaders are no different and feature the most dependable, responsive, and smooth controls available.

They serve as an extension of the operator giving them precise control for greater efficiency and performance.



# Specifications

OPERATING PERFORMANCE	TL6R	TL8	TL10V-2	TL12R-2	TL12V-2
Lift Arm Path	Radial	Radial	Vertical	Radial	Vertical
Operating Weight - Canopy	3,395 kg	3,835 kg	4,515 kg	5,580 kg	5,835 kg
Cab	3,530 kg	3,915 kg	4,660 kg	5,710 kg	5,985 kg
Bucket Capacity	0.298 m <sup>3</sup>	0.351 m <sup>3</sup>	0.458 m <sup>3</sup>	0.595 m <sup>3</sup>	0.595 m <sup>3</sup>
Tipping Load	2,390 kg	2,730 kg	3,270 kg	3,915 kg	5,325 kg
Rated Operating Capacity, ISO14397-1*	835 kg	955 kg	1,145 kg	1,350 kg	1,865 kg
Operating Load at 50% of Tipping Load	1,195 kg	1,365 kg	1,635 kg	1,958 kg	2,663 kg
Bucket Breakout Force	26.4 kN	30.4 kN	29 kN	36.5 kN	35.0 kN
Lift Arm Breakout Force	21.6 kN	30.5 kN	24 kN	35.9 kN	31.6 kN
Traction Force	38.5 kN	40.6 kN	43.3 kN	62.3 kN	62.3 kN
Ground Pressure - Canopy	34.8 kPa	37.2 kPa / **30.2 kPa	34.8 kPa	32.0 kPa	33.4 kPa
Ground Pressure - Cab	33.5 kPa	38.0 kPa / **30.8 kPa	35.9 kPa	32.7 kPa	34.3 kPa
Travel speed - Low	7.0 km/h	7.4 km/h	7.7 km/h	8.1 km/h	8.1 km/h
High	10.0 km/h	11.0 km/h	11.3 km/h	11.8 km/h	11.8 km/h

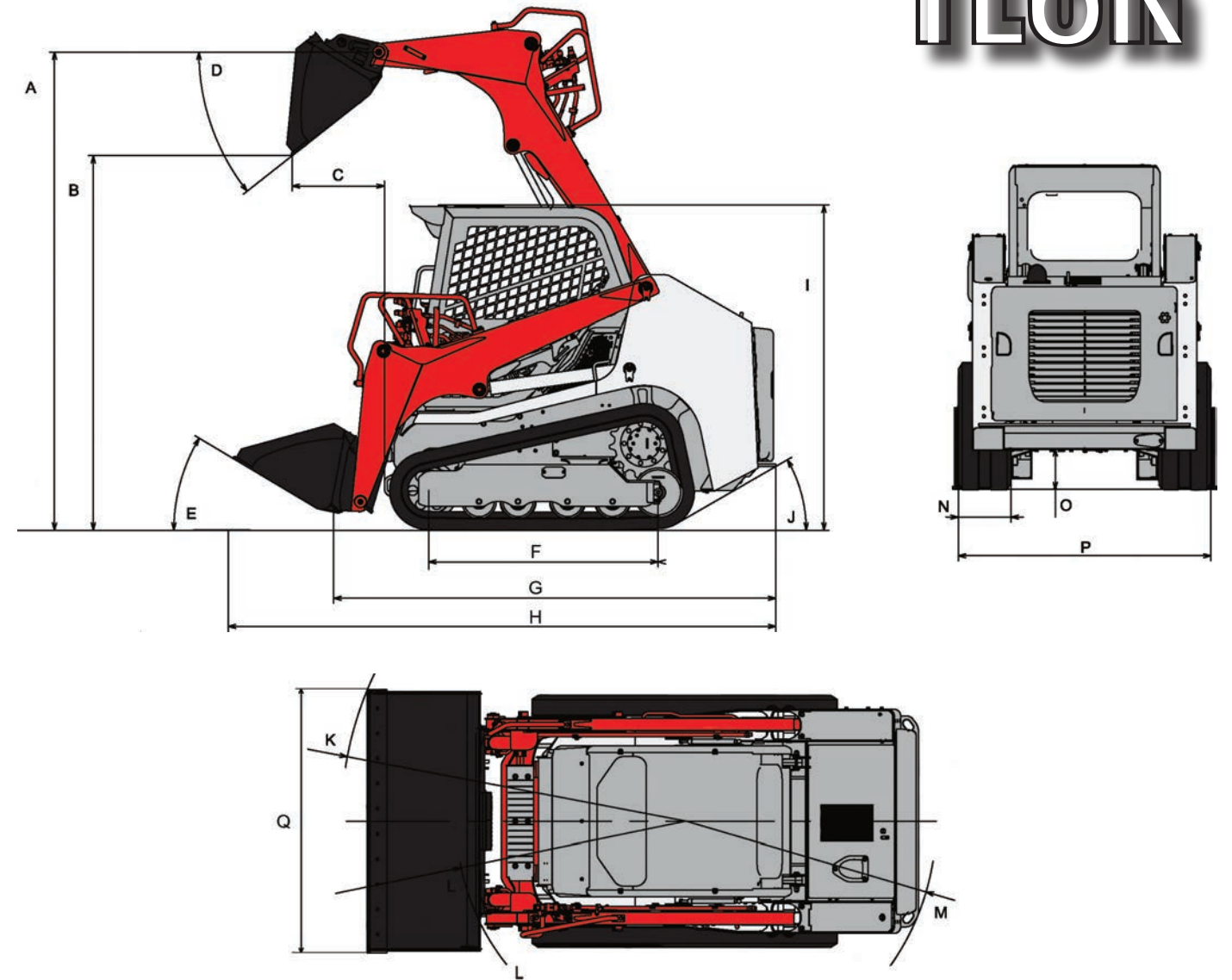
\*Operating capacity of track loaders is rated according to ISO14397-1 at no more than 35% of the tipping load. \*\*400 W Track

HYDRAULIC SYSTEM	TL6R	TL8	TL10V-2	TL12R-2	TL12V-2
Auxiliary Flow - Primary Circuit	67.0 L/min	72 L/min	71 L/min	88.0 L/min	88.0 L/min
Auxiliary Flow - High Flow (optional)	N/A	128 L/min	124.0 L/min	153.0 L/min	153.0 L/min
Auxiliary Flow - Secondary Circuit (optional)	N/A	N/A	71 L/min	88.0 L/min	88.0 L/min
Hydraulic System Pressure	20.6 MPa	21.0 MPa	24.0 MPa	24.0 MPa	24.0 MPa
ENGINE	TL6R	TL8	TL10V-2	TL12R-2	TL12V-2
Make / Model	Kubota / V2403-CR-TE4B	Kubota / V3307-CR-TE4B	Kubota / V3307-CR-TE4B	Kubota / V3800-TIEF4B	Kubota / V3800-TIEF4B
Emission	EU Stage IIIB EPA Tier 4	EU Stage IIIB EPA Tier 4	EU Stage IIIB EPA Tier 4	EU Stage IV EPA Tier 4	EU Stage IV EPA Tier 4
Engine Displacement	2,434 ml	3,331 ml	3,331 ml	3,769 ml	3,769 ml
Rated Output (ISO 14396)	47.9 kW / 2,700 min <sup>-1</sup>	54.6 kW / 2,600 min <sup>-1</sup>	54.6 kW / 2,600 min <sup>-1</sup>	81.8 kW / 2,400 min <sup>-1</sup>	81.8 kW / 2,400 min <sup>-1</sup>
Maximum Torque	195.6 Nm / 1,600 min <sup>-1</sup>	259.5 Nm / 1,500 min <sup>-1</sup>	261.1 Nm / 1,500 min <sup>-1</sup>	379.3 Nm / 1,500 min <sup>-1</sup>	379.3 Nm / 1,500 min <sup>-1</sup>
FLUID CAPACITIES	TL6R	TL8	TL10V-2	TL12R-2	TL12V-2
Engine Lubrication	7.6 L	11.2 L	11.2 L	13.2 L	13.2 L
Cooling System	13.0 L	14.0 L	15.0 L	18.0 L	18.0 L
Fuel Tank Capacity	75.7 L	75.0 L	81.0 L	119.5 L	119.5 L
Hydraulic Reservoir Capacity	30.0 L	39.0 L	36.0 L	50.0 L	50.0 L
Hydraulic System Capacity	51.0 L	58.0 L	65.0 L	85.0 L	94.0 L



# Working & Machine Dimensions

# TL6R

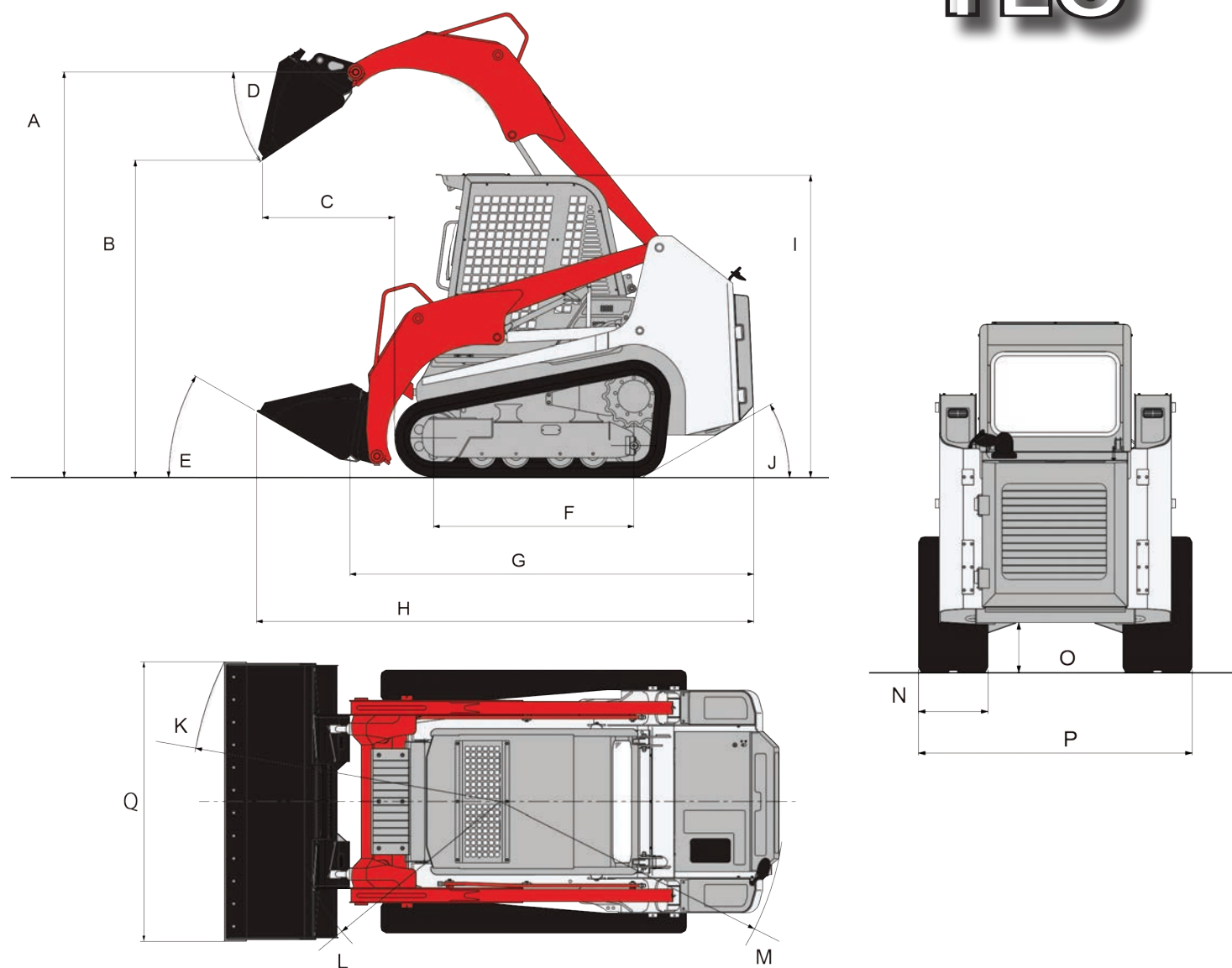


## MACHINE DIMENSIONS

A	Maximum Lift Height to Bucket Pin	2,905 mm
B	Dump Height Fully Raised	2,275 mm
C	Dump Reach Fully Raised	560 mm
D	Dump Angle	38°
E	Rollback Angle	30°
F	Track Base	1,395 mm
G	Machine Length	2,690 mm
H	Transport Length	3,330 mm
I	Transport Height	1,975 mm
J	Departure Angle	30°
K	Clearance Circle with Bucket	2,095 mm
L	Clearance Circle without Bucket	1,395 mm
M	Clearance Circle Rear	1,520 mm
N	Track Width	320 mm
O	Ground Clearance	230 mm
P	Overall Width without Bucket	1,530 mm
Q	Bucket Width	1,600 mm



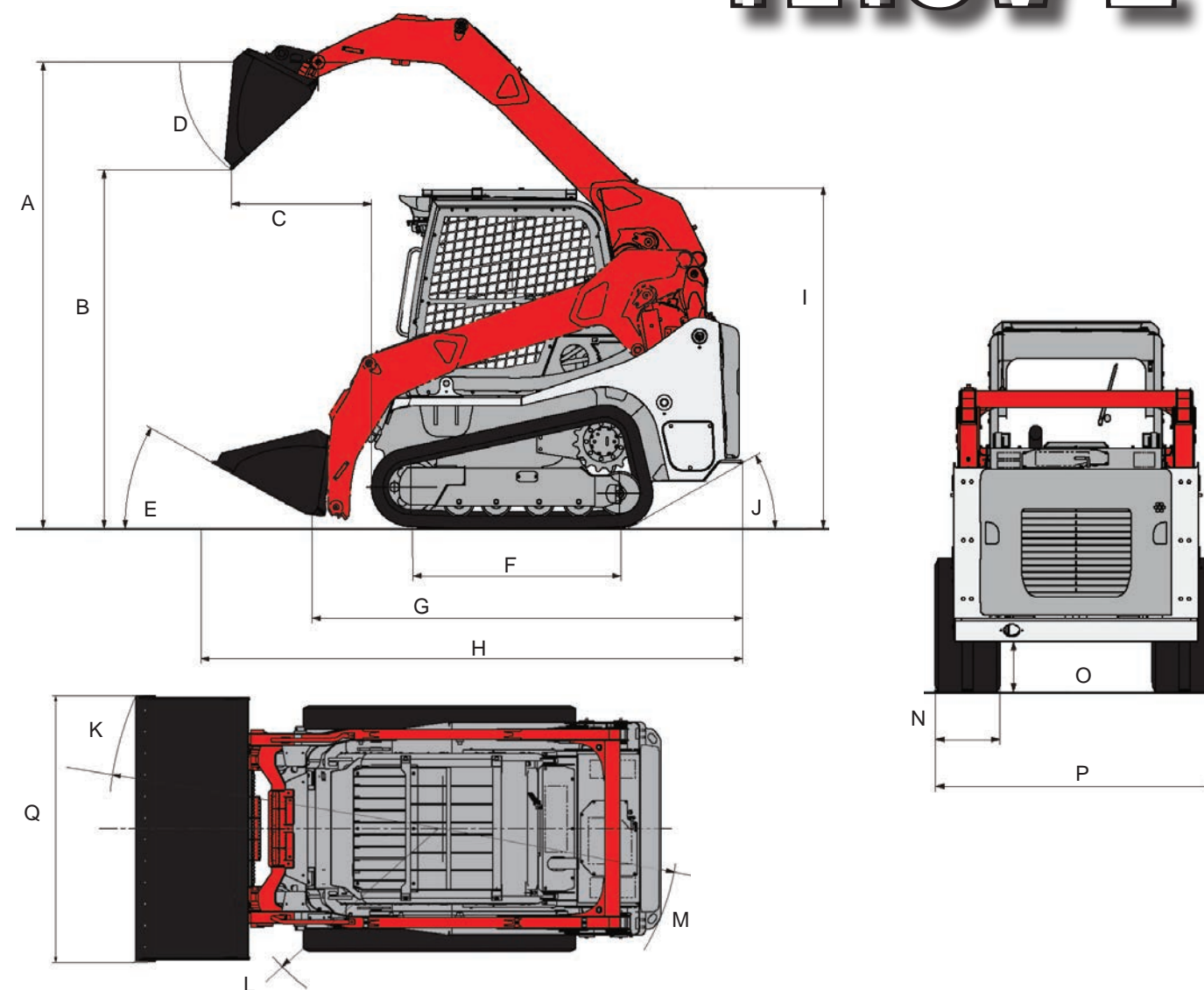
# TL8



## MACHINE DIMENSIONS

A	Maximum Lift Height to Bucket Pin	3,030 mm
B	Dump Height Fully Raised	2,370 mm
C	Dump Reach Fully Raised	730 mm
D	Dump Angle	40°
E	Rollback Angle	30°
F	Track Base	1,390 mm
G	Machine Length	2,740 mm
H	Transport Length	3,430 mm
I	Transport Height (CNP / CAB)	2,130 mm / 2,235 mm
J	Departure Angle	30°
K	Clearance Circle with Bucket	2,080 mm
L	Clearance Circle without Bucket	1,375 mm
M	Clearance Circle Rear	1,585 mm
N	Track Width	320 mm / 400 mm
O	Ground Clearance	310 mm
P	Overall Width without Bucket (*400W Track)	1,580 mm / *1,660 mm
Q	Bucket Width	1,675 mm

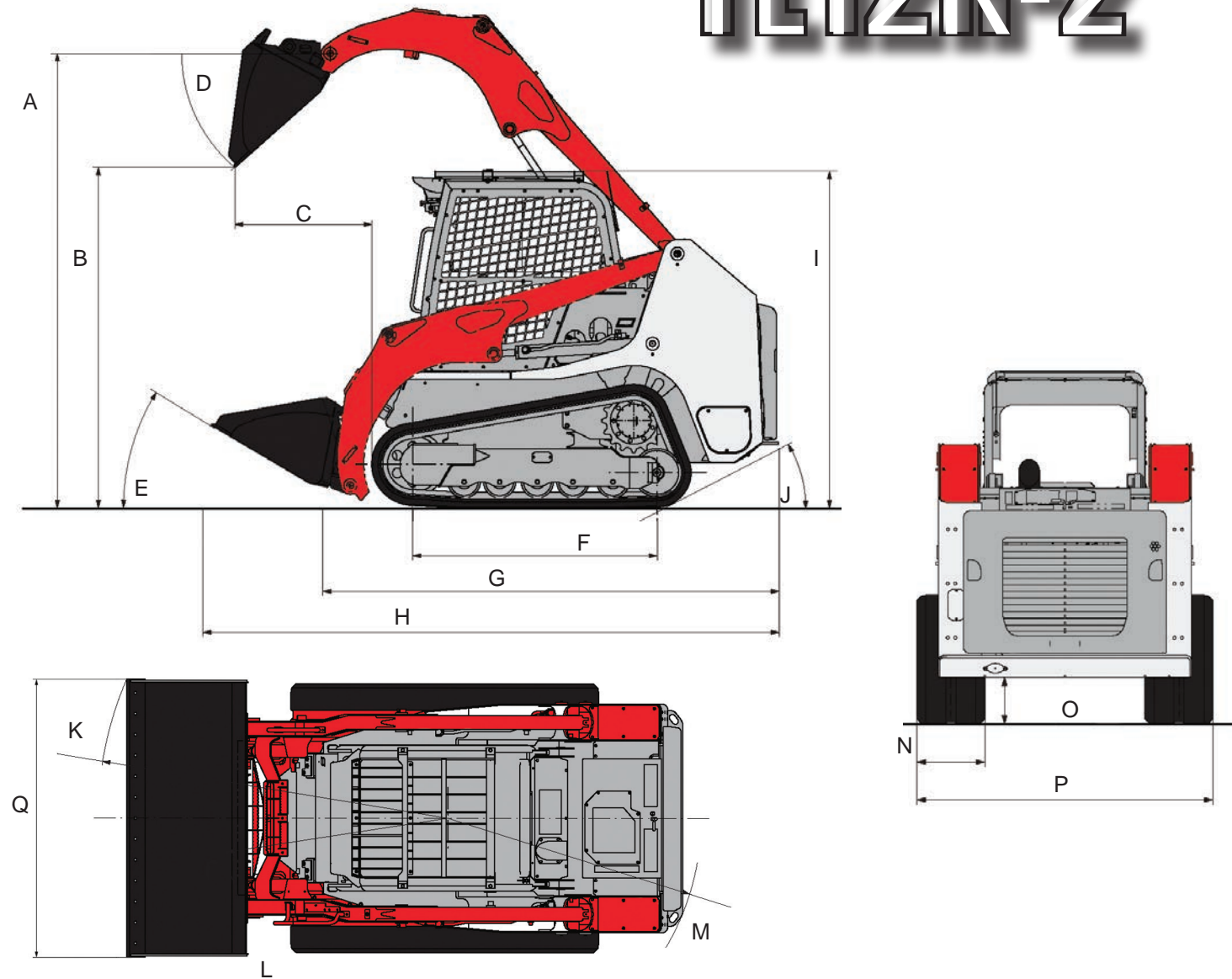
# TL10V-2



## MACHINE DIMENSIONS

A	Maximum Lift Height to Bucket Pin	3,170 mm
B	Dump Height Fully Raised	2,435 mm
C	Dump Reach Fully Raised	950 mm
D	Dump Angle	40°
E	Rollback Angle	30°
F	Track Base	1,420 mm
G	Machine Length	2,925 mm
H	Transport Length	3,680 mm
I	Transport Height	2,270 mm
I'	Transport Height with Roof Guard	2,310 mm
J	Departure Angle	30°
K	Clearance Circle with Bucket	2,350 mm
L	Clearance Circle without Bucket	1,535 mm
M	Clearance Circle Rear	1,655 mm
N	Track Width	400 mm
O	Ground Clearance	320 mm
P	Overall Width without Bucket	1,740 mm
Q	Bucket Width	1,880 mm

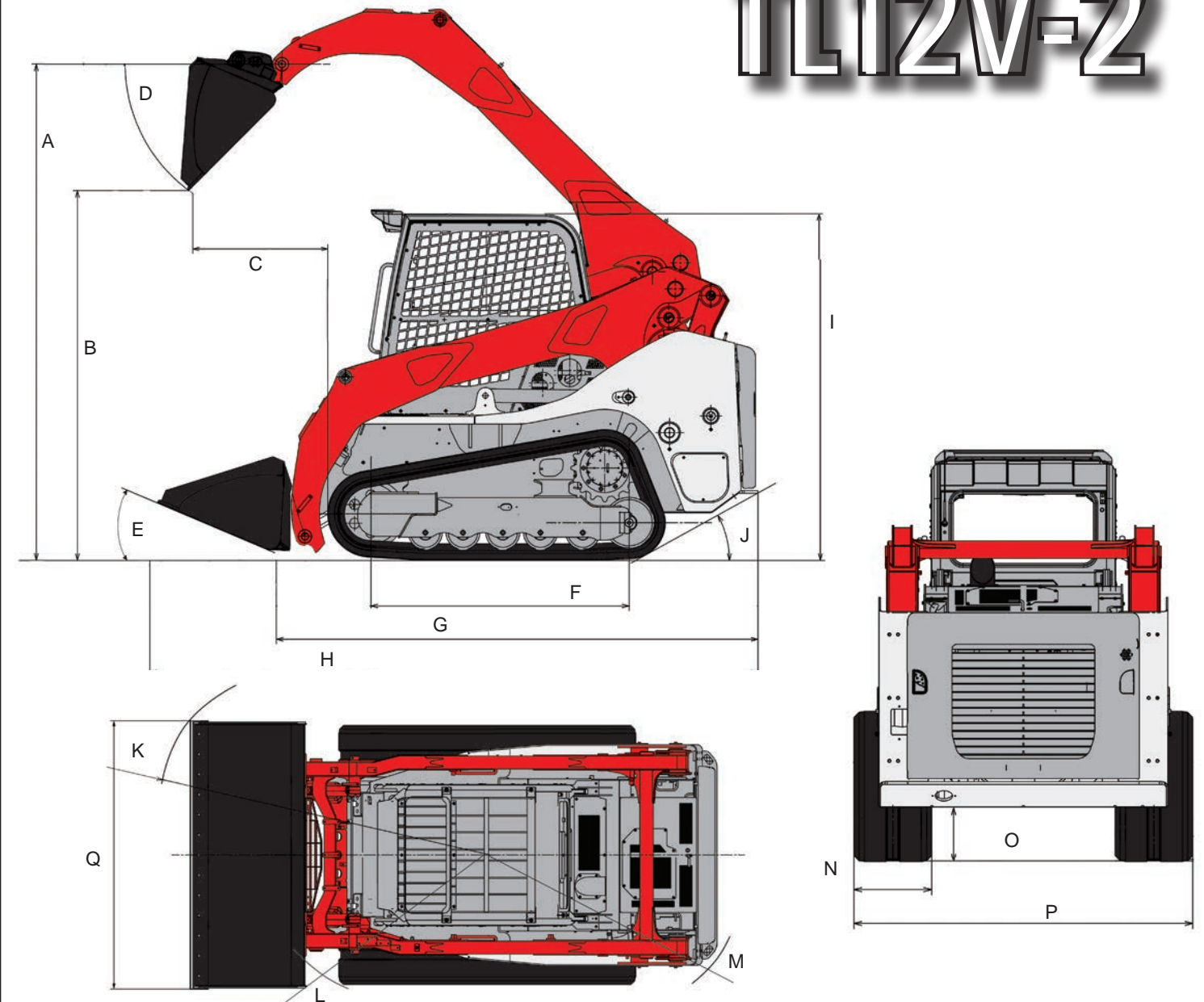
# TL12R-2



## MACHINE DIMENSIONS

A	Max. Lift Height to Bucket Pin	3,200 mm
B	Dump Height Fully Raised	2,400 mm
C	Dump Reach Fully Raised	960 mm
D	Dump Angle	40°
E	Rollback Angle	30°
F	Track Base	1,715 mm
G	Machine Length	3,205 mm
H	Transport Length	4,045 mm
I	Transport Height	2,330 mm
I'	Transport Height with Roof Guard	2,380 mm
J	Departure Angle	30°
K	Clearance Circle with Bucket	2,555 mm
L	Clearance Circle without Bucket	1,635 mm
M	Clearance Circle Rear	1,850 mm
N	Track Width	450 mm
O	Ground Clearance	320 mm
P	Overall Width without Bucket	1,960 mm
Q	Bucket Width	2,030 mm

# TL12V-2



## MACHINE DIMENSIONS

A	Max. Lift Height to Bucket Pin	3,300 mm
B	Dump Height Fully Raised	2,460 mm
C	Dump Reach Fully Raised	925 mm
D	Dump Angle	45°
E	Rollback Angle	30°
F	Track Base	1,715 mm
G	Machine Length	3,205 mm
H	Transport Length	4,045 mm
I	Transport Height	2,330 mm
I'	Transport Height with Roof Guard	2,380 mm
J	Departure Angle	30°
K	Clearance Circle with Bucket	2,505 mm
L	Clearance Circle without Bucket	1,610 mm
M	Clearance Circle Rear	1,850 mm
N	Track Width	450 mm
O	Ground Clearance	320 mm
P	Overall Width without Bucket	1,960 mm
Q	Bucket Width	2,030 mm





# TAKEUCHI™

© 2018 Takeuchi MFG. Co., Ltd. All Rights Reserved. In accordance with our established policy of continued improvement, specifications and features are subject to change without notice. Pictures may show options other than standard equipment.

FORM: Excavator Brochure Mar. 2018

Visit Our Website at: [www.takeuchiglobal.com](http://www.takeuchiglobal.com)