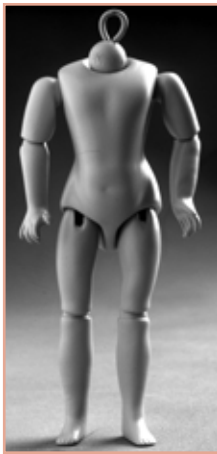


FRENCH COMPOSITION BODIES AND PATTERNS

French bodies are normally jointed at the shoulders, elbows, hips and knees, FB = French Body.

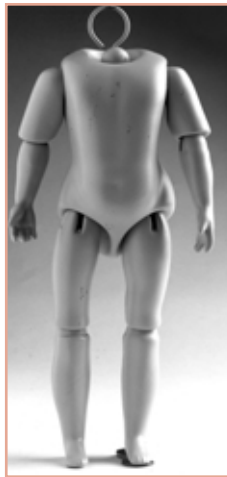


FB550S. 6" (15.25cm).

Fits:

PETITE EJ (S347)
 PETITE AT (S348)
 PETITE LAUGHING JUMEAU (S349)
 PETITE BRU (S350)
 PETITE JUMEAU (S351)
 PETITE JUMEAU LYRIC (S352)
 PETITE SCREAMER (S353)
 PETITE A MARQUE (S354)
 PETITE STEINER KAHLIE (S355)
 PETITE FG (S356)
 PETITE RD (S358)
 PETITE ORIENTAL (S359)
 PETITE PAN (S362)

Patterns: Refer to Petite section.



FB10S. 9" (23cm).

Fits:

PHENIX BEBE III (S85)
 LADY MARGARET (S137)
 ANGELICA BRU BEBE (S220)
 PORTRAIT OF JEANNE (S139)
 XI GIRL II (S159) Discontinued

FB10JS. 9" (23cm)

Fits:

PAULINE (S189)
 LADY MARGARET (S137)
 AT NINA (S320)
 PORTRAIT OF JEANNIE (S139)



Patterns for FB10S-FB10JS:

CP407 French dress, underwear, hat
 CP450 Bretelle dress with five variations
 CP451 Dress and underwear for Pauline (S189)
 CP452 Nina's dress and bonnet (S320)
 LI1612 French frock, petticoat, drawers (same style as LI1611 for Milette)



CP407



CP450



CP451



CP452



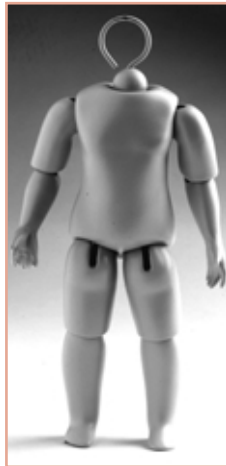
LI1612

FB7S. 6.5" (16.5cm).

Fits:

AT SILVER (S87)
 MARQUETTE (A. MARQUE III) (S152)
 BRU SHANDELE IV (S94)
 JUMEAU ARIELLE IV (S95)
 JUMEAU LYRIC MILETTE (S198)
 LAUGHING JUMEAU II (S150) Discontinued
 JUMEAU LACIE (S90) Discontinued

Patterns: Refer to Milette section.



FB8S. 8" (20-25cm)

Fits:

EJ. DOLLIN (S92)
 JUMEAU LYRIC MILETTE (S198)
 AT SILVER (S87)
 STEINER KAHLIEV (S99)
 BEBE CHARMANT MILETTE (S343)
 JUMEAU ARIELLE IV (S95)
 BRU SHANDELE IV (S94)
 MARQUETTE (A. MARQUE III) (S152)
 LAUGHING JUMEAU II (S150) Discontinued
 JUMEAU LACIE (S90) Discontinued

Patterns: Refer to Milette section.

FB12S. 10.75" (27-25cm)

Fits:

XI GIRL (S108)
 CELESTE C-STEINER (S39)
 CIRCLE DOT BRU ESTELLE (S112)
 BRU SHANDELE III (S65)
 CHERRY RIPE (S854)
 STEINER EMILIE (S304) Discontinued
 MELISSA (S858) Discontinued
 PHENIX BEBE II (S84) Discontinued



Patterns for FB12S-FB12JS:

CP401 Jumeau Lyric outfit, blouse, skirt, coat, drawers, slip, socks, shoes
 CP402 Cassandra coat dress, French Bebe style
 CP403 Stobe French dress
 CP407 French dress, underwear, hat (for photo see FB10S)
 CP408 Elaborate dress, slip.
 CP409 Bretelle dress with variations.
 CP410 Kate Greenaway-style dress, underwear
 LI1615 French frock with apron, bustle (same style as LI1612, see FB10S).
 LI15815 1890's dress and guimpe /blouse with variations



CP409



CP410



LI15815



CP401



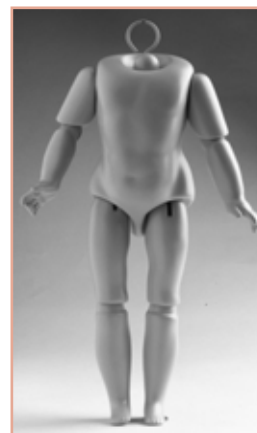
CP402



CP403



CP408



FB12JS. 10.75" (27-25cm)

Fits:

XI GIRL (S108)
 CELESTE C-STEINER (S39)
 STOBE (S26H)
 JUMEAU LYRIC (S123)
 CHERRY RIPE (S854)
 SONNEBERG CHILD (DAG)
 LONG FACED JUMEAU III (S2H) Discontinued
 STEINER EMILIE (S304) Discontinued
 PAN III (S184) Discontinued
 MELISSA (S858) - Discontinued
 PHENIX BEBE II (S84) Discontinued
 H-HELENE III (S174) Discontinued

FRENCH COMPOSITION BODIES AND PATTERNS



FBI4S. 12" (30.5cm)

Fits:

BEBE CHARMANT (DAG970)
 BRU BREVETE (S324)
 BEBE LOUVRE (S118)
 BRU MELINDA (S122)
 LONG FACE JUMEAU IIB (S187)
 PAN II (S183)
 SCHMITT LILETTE (S181)
 H-HELENE II (S173)
 JULIE STEINER (S25H)
 PHENIX BEBE (S82)
 MAY (DAG)
 JOY II (S334)
 BEBE FRANCAIS (S339)
 A.T. RENTILLE (S033H)
 A.T. DESIREE II (S97) Discontinued

FBI4JS. 12" (30.5cm)

Fits:

BEBE LOUVRE (S118)
 LONG FACE JUMEAU IIB (S187)
 BEBE FRANCAIS (S339)
 BEBE CHARMANT (DAG970)
 E.J. CAMILLE II (S253ST)

Patterns for FBI4S-FBI4JS

CP501 Dress with Shirred front, pleated skirt, slip
 CP503 French dress with tucks
 CP505 Dress, petticoat, pantalets
 CP506 Bretelle dress
 CP507 French dress, underwear for Bru Brevete (S324)
 CP508 Dress, underwear, bonnet for Bebe Charmant (photo shown on doll, DAG970)
 LI4116 Lanvin all-pleated dress from 1916
 LI5817 1890's Dress and guimpe, blouse with variations (same style as LI5815 on FB12)
 MP34 Slip and underpants



CP501

CP503



CP505

CP506

CP507

LI4116

MP34

FBI7S. 17" (43.2cm)

Fits:

SCHMITT LILY (S156)
 A I T CELINE (S345)
 DANIELLE (S153)
 E. J. CAMILLE (S185ST)
 CHANELLE II, C-STEINER (S193ST)
 E.J. SIMONNE (S129)
 Mlle. LILIANNE (S325ST)
 KAHLIE II (S83) Discontinued
 JENNIE (S819) Discontinued



CP6501

Patterns:

LI5322 Balloon-sleeve dress. (same style as LI5320 on FB16JS)
 LS16 Boots. (see photo on FB16JS section)
 CP6500 Drop-waist dress. (shown on Mlle. Lilianne S325ST)
 CP6501 Chemise, drawers, petticoat.



FBI6S. 14.75" (37.5cm.)

Fits:

A.T. DESIREE I (S93)
 LARGE MARQUE (S169)
 BRU SHANDELE II (S59)
 JOY (S333)
 SWISS HEIDI (DAG)
 MIRANDA (S35) Discontinued
 F.G. YVONNE (S127) Discontinued
 LITTLE JEN (S820) Discontinued

Patterns:

CP602 1880s dress with bustle, drawers, hat
 CP603 French dress, jacket, vest, hat, slip, drawers
 CP604 Boy's matching suit, vest, shirt, underpants, hat
 CP607 Dress, half-slip, and all-in-one teddy for Joy (S333)
 LI4119 Lanvin all-pleated dress from 1916 (same style as LI4116 on FB14S)
 LI5819 1890s dress and guimpe/blouse with variations (same style as LI5815 on FB12S)

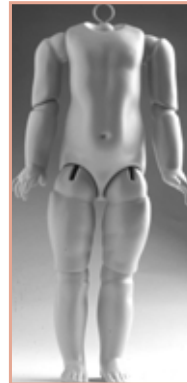


CP602

CP603

CP604

CP607



FBI6JS. 15.5" (39.25cm.)

Fits:

BEBE FLEUR (DAG)
 JUMEAU ARIELLE III (S80)
 RD MOLINNE III (S166)
 LONG FACE II (S180)
 DANIELLE II (PARIS BEBE) (S154)
 BRU COLOMBINE (S126)
 SWISS HEIDI (DAG)
 LITTLE JEN (S820) Discontinued
 F.G. YVONNE (S127) Discontinued

FBI6JWS. 15.5" (39.25cm.)

Fits:

PAN (S182)
 H-HELENE (S171)
 BRU COLOMBINE (S126)
 JASMINE II (S828)
 SCHMITT LILY (S156)



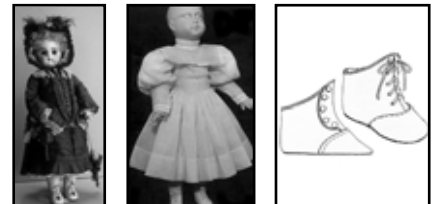
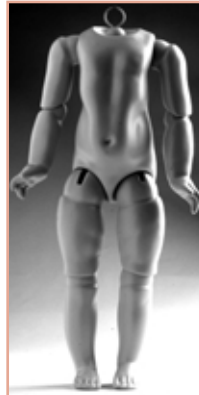
FBI6JWSFC. 15.5" (39.25cm.)

Fits:

BRU COLOMBINE (S126)

Patterns for FBI6JS-FBI6JWS -FBI6JWSFC

CP606 Elaborate PAN costume: Dress, jacket, hat, slip, camisole, pantacons, mitts, purse, parasol and boots (shown on doll, S182)
 LI5320 Balloon-sleeve dress w. variations
 LS16 Boots with variations



CP606

LI5320

LS16

FRENCH COMPOSITION BODIES AND PATTERNS



FB18S. 17.75" (45cm)

Fits:

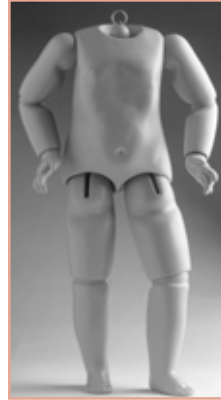
DANIELLE I (S153)
RD MOLINNE (S164)
CHANELLE II, C-STEINER (S193ST)
JUMEAU ARIELLE II (S78)
KAHLIE I (S81)
LONG FACE JUMEAU (S179)
MERILIE A.T. (S31H)
EDEN BEBE (S335)



L14526

Patterns:

L14526 Dress with variations
L15323 Balloon sleeve dress with variations (same style as L15320 on FB16JS)
LS16 boots with variations. (see photo on FB16JS section)



FB230S. 22" (56cm)

Fits:

JUMEAU ARIELLE (S75)
C-STEINER CHANELLE (S192ST)
CLAUDETTE (S18)
RD MOLINNE (S164)



CP1650

Pattern:

CP1650 Queen Elizabeth costume with toque

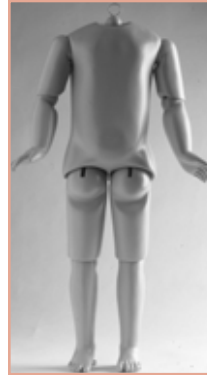
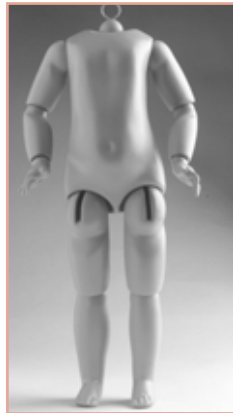
FB19S. 18" (46cm)

Fits:

BRU SHANDELE (S58)
CHANELLE II, C-STEINER (S193ST)
DANIELLE (S153)
ZELMA (M1001)
RD MOLINNE II (S165) Discontinued
KAHLIE II (S83) Discontinued

Patterns:

CP8001 French sailor dress, petticoat, drawers, hat
DP1003 Marguerite dress, jacket, pantaloons, hat
L13222 Boy's Russian and sailor suits, 1894-1901
L14122 Lanvin all-pleated dress from 1916 (same style as L14116 on FB14S)
L12522 Cut-away-jacket, dress from 1883
LUI88022 Underwear: Chemise, petticoat, and drawers



FB24S. 24" (61cm)

Fits:

JUMEAU ARIELLE I (S75)
F.G. JEAN CLAUDE (S17)
C-STEINER CHANELLE (S192ST)



CP1601

Pattern:

CP1601 Drop-waist dress, underwear



CP8001



DP1003



L13222



L12522



LUI88022

FB245S. 24" (61cm)

Fits:

C-STEINER CHANELLE (S192ST)

FB255S. 25" (63.5cm)

FB265S. 26" (66cm)



FB21.5S. 21" (53.25cm)

Fits:

CHRISTINNE (S370)
MERILIE A.T. (S31H)
KAHLIE I (S81)
SFBJ SUZANNE (OED3066)
BRU SOLANGE (S342)
JUMEAU ARIELLE I (S75)
RD MOLINNE (S164)
F.G. CLAUDETTE (S18)
F.G. JEAN CLAUDE II (S38) Discontinued
SFBJ SANDY (S41) Discontinued
JENNIFER (S818) Discontinued
JASMINE (S827) Discontinued

Patterns:

CP2001 1880s French dress, slip, underwear
CP2002 Dress, slip, pantaloons, hat
CP2003 Jean Claude pants, jacket, tie underpants
CP2004 Dress, slip, drawers
CP2006 Long waisted dress with French drape. (shown on Christine, S370)
DP1013 Turn of the century winter costume: skirt, jacket, hat, muff, slip, underwear.
L14528 Princess dress with variations. (same style as L14526 on FB18S)



CP2001



CP2002



CP2003



CP2004



DP1013

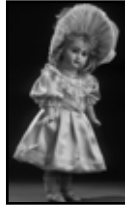
FRENCH COMPOSITION BODIES AND PATTERNS



FWB14. 14" (35.5cm)

Fits:

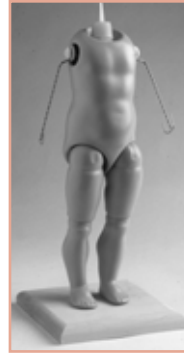
JOY II (S334)
GENEVIEVE (DAGMold)
BEBE LOUVRE (S118)
BRU BREVETE (S324)
BEBE FRANCAIS (S339)
BRU MELINDA (S122)



INTREPIDPTN

Pattern:

#INTREPIDPTN Genevieve costume



FMB14. 12.5" (37.5cm)

Fits:

PRINCESS DESIREE (ARIELLE) (S671M)
BRIGITTE JUMEAU (LONG FACE) (S661M)
CHRISTINA (PHENIX BEBE) (S662M)
MARGARETA (H-DOLL) (S663M)
CARL GUSTAF (CLAUDE) (S665M)
FG MECHANICAL (S672M)

Patterns: See Mechanical dolls section.

GERMAN COMPOSITION BODIES AND PATTERNS

These are child bodies with jointed elbows, shoulders, knees, and hips and a few of the largest sizes with jointed wrists. GB = German Body.

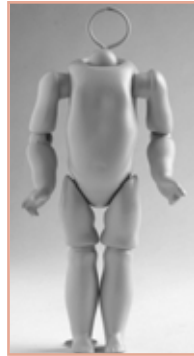
GB650S. 6.5" (16.5cm)

Fits:

MAX (S168R)
MORITZ (OED3033)
KESTNER JOE/JOSEPHINE (S327)
KESTNER MEG (S328)
JDK 185 AMANDA (S329)
JDK 178 STEPHEN/STEPHANIE (S330)
ELITA (S344)

Patterns:

CP9003 Original dress with fitted waist, underwear (for photo see Annette section)
CP9004 Boy's authentic colonial costume (for photo see Annette section)
CP9005 Double-breasted coat, cap, knitted mit tens, purse (for photo see Annette section)
CP9006 Two Kate Greenaway-style yoked dress, underwear (for photo see Annette section)
CP9007 Suit, vest for Max & Moritz



CP9007

GB8S. 7.5" (19cm)

Fits:

DEAR GOOGLY (S001H)
HENRI (S049)
EMERALD (S247)
WHISTLER (S010H)



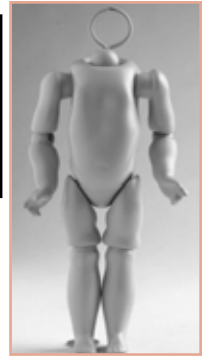
CP302



CP303



CP316



Patterns:

CP302 Googly dress (shown on Googly, S001H)
CP303 Matching boy's suit
CP316 Whistler romper suit
LI3912 Romper suit with variations (same style as LI3909 on GB7S)

GB8.75S. 8" (20.25cm)

Fits:

LITTLE STAR (S178)
MEIN LIEBLING III (S151)
JENETTE (S823) Discontinued
UNCLE SAM (S30H) Discontinued
TADEUS (S157) Discontinued

Patterns:

CP1701 Dress, apron, slip drawers
CP1702 Low-waisted dress, slip drawers



CP1701



CP1702



GB7S. 6.75" (17cm)

Fits:

MEIN LIEBLING III (S151)
ARTHUR (S042)
K*R 101 PETER (S056H)
K*R FUNNY FACE (S602) Discontinued
JDK 221 LITTLE GOOGLY (S008H) Discontinued

Patterns:

CP210 Regional costume: skirt, blouse, vest, apron, slip, drawers
CP211 Bavarian folk costumes: skirt, blouse, slip, underpants for girl. Short pants, shirt, underwear, for boy.
LI3909 Romper suit with variations



CP210



CP211



LI3909

GB10S. 10" (25.5cm)

Fits:

HENRI (S49)
WHISTLER (S10H)
FAYE (S27H)
FRANKIE (S121) Discontinued

Pattern:

LI2614 Buster Brown suit with variations



LI2614



GERMAN COMPOSITION BODIES AND PATTERNS

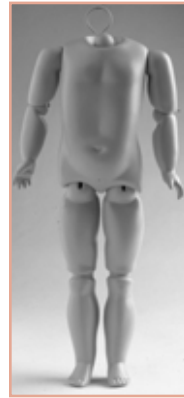
GB105S. 11" (28cm)

Fits:

DIE SCHWESTER II (S361)

Pattern:

CP1801 Sailor dress, underwear, hat pattern (shown on Die Schwester, S361)



GB13S. 13" (33cm)

Fits:

CARLA JDK (S167)
HANS/GRETCHEN (OED3025)
JOHANN (S155)
MAY (DAGMold)
MARY ANN (S880) Discontinued

Patterns:

CP4004 Lorelei's regional costume: blouse, skirt, vest, apron, scarf, hat, underwear.
CP4005 Carla's dress, slip drawers
CP4006 Dress and underwear for Mary Ann (S880) and others
CP4008 Boy's outfit
DP1006 Hans/Gretchen sailor costumes, dress, jacket, pantaloons. Jacket, knickers, dickey, tie. Tam-o'-shanter.
DP1010 Dress, slip, pantaloons
LI5416 Boy's wardrobe (same style as LI5414 on GB110S)
LI6117 Girl's Sunday frocks, 1908-20. Two styles.
LUI90516 Underwear



GB110S. 11" (28cm)

Fits:

ANITA (S323)
K&H LORIE (S011H)
S&H INGRID (S158)
HEUBACH CHARMER (S258)

GB11S. 11" (28cm)

Fits:

S&H INGRID (S158)
K&H LORIE (S11H)
ANNELISE (S322)
ANITA (S323)
ROBERT (S194)



GB130S. 13" (33cm)

Fits:

CARLA (S167)
HANS/GRETCHEN (OED3025)
JOHANN (S155)
INGE (S338)
MEIN LIEBLING IV (S252)
SHANNON II (S254)

Patterns: See GB13S patterns, plus

CP4007 Inge dress, underwear



Patterns for GB110S-GB11S

CP1901 Norwegian folk costume for girl
CP1903 Dress, slip, drawers for girl
CP2000 Sailor Costume (shown on Charmer, S258)
LI5414 Boy's wardrobe: straight pants, knickers, two short jackets, shirt with variations
LUI92013 Boy's one-piece underwear



CP1901



CP1903



LI5414



LUI92013



CP4005



CP4006



DP1006



DP1010



CP4004



LI5416



LI6117



LUI90516



CP4007

GB12S. 11" (28cm).

Fits:

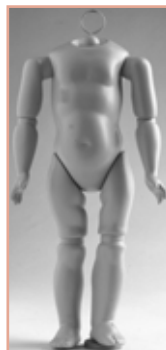
KESTNER'S ANA (S321)
K&H LORIE (S011H)
INGRID (S158)

Pattern:

CP3000 1910 party dress with pleats and underwear



CP3000



GB14SA 13.5" (34.25cm)

Fits:

DAISY ELMIRA (OZ007)

Pattern:

LUI90518 underwear (same style as LUI90516 on GB10S)
CP4010 Party dress and hat coming soon.



GERMAN COMPOSITION BODIES AND PATTERNS

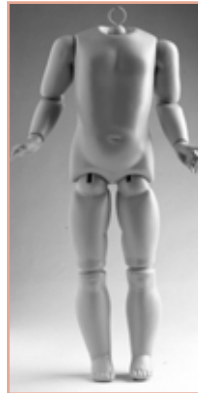
GB15S. 13.5" (34.25cm)

Fits:

DIE SCHWESTER (S341)
OLIVER (S881)
NED (S46) Discontinued
LITTLE LAUREN (S851) Discontinued
LARGE ELISE II (S161) Discontinued

Patterns:

CP702 Boy's knickers, shirt
CP703 Dress, slip, underpants
CP704 Kate Greenaway-style dress with variations, underwear
CP705 Hans/Gretchen sailor costumes: dress, jacket, pantaloons. Jacket, knickers, dickey, tie. Tam-o'-shanter.
LI2617 Buster Brown suit with variations (same style as **LI2614** on **GB10S**)
LI6118 Girl's Sunday Frocks 1908-1920. Two styles (same style as **LI6117** on **GB13S**)
LUI90518 Underwear (same style as **LUI90516** on **GB130S**)
LUI92019 Boy's one-piece underwear "union suit" (same style as **LUI92013** on **GB110S**)



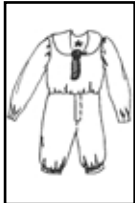
GB18S. 17.5" (44.5cm)

Fits:

MEIN LIEBLING (S141)
KATHRYN (OED3013)
S&H GISELA (S197)
APRIL THE FLIRT (OED3014) Discontinued
LARGE ELISE (S160) Discontinued
LARGE QUEEN LOUISE (OED3021) Discontinued

Patterns:

CP804 1919s dress, slip, combination, hat
DP1000 Dress with lace inserts, bonnet, slip, pantaloons
DP1002 Marie dress, slip, pantaloons
DP1003 Marguerite dress, jacket, pantaloons, hat (same style as on **FB19S**)
DP1004 Kathryn jumper, blouse-slip combination, pantaloons, hat
LI2824 Coat with double cape and variations
LI4122 Lanvin pleated dress, 1916. (same style as on **LI4116** on **FB14S**)
LI5923 Heirloom party dress with variations, 1900-1920. (same style as on **LI5921** on **GB16S**)
LUI90524 Underwear. (same style as on **LI90516** on **GB13S**)



CP702



CP703



CP704



CP705



CP804



DP1000



DP1002



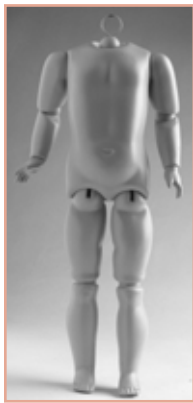
DP1004



LI2824



LUI90524



GB16S. 15" (38cm)

Fits:

K*R 114 HANS/GRETCHEN (S029H)
K*R 117 MEIN LIEBLING II (S144)
K*R 116A HAPPY (S022H)
CAPRI (M1021)
SWISS HEIDI (DAGMold)
LITTLE JEN (S820) Discontinued
K*R121 RUTH (S023H) Discontinued
QUEEN LOUISE (S054) Discontinued

Patterns:

CP1401 National costume: blouse, skirt, embroidered vest, slip, underpants
CP1402 Sweetheart dress and underwear.
LI3218 Boy's Russian and sailor suits with variation 1894-1901. (same style as **LI3222** on **FB19S**)
LI4119 Lanvin pleated dress from 1916 (same style as **LI4116** on **FB14S**)
LI5921 Heirloom party dress with variations 1900-1920.
LI6121 Girl's Sunday frocks 1908-1920. Two styles. (same style as **LI6117** on **GB13S**)
LUI90521 Underwear. (same style as **LUI90516** on **GB13S**)



CP1401



CP1402



LI5921

GB18.5S. 18" (45.7cm)

Fits:

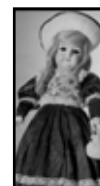
MEIN LIEBLING (S141)
SHANNON (S196)
HEUBACH POUTY BILLIE (S028H)
S&H GISELA (S197)
MEIN NEUER LIEBLING ROSE (S199)
LITTLE KARIN (OED3037) Discontinued

Patterns:

CP851 Dress with lace insets, bonnet, slip, pantaloons
DP1005 Queen Louise dress, petticoat, pantaloons
LI2623 Buster Brown suit and variations (same style as **LI2614** on **GB10S**)
LUI92023 Boy's one-piece underwear, "union suit" (for **LI2623**) (same style as **LI92013** on **GB110S**)
LI2824 Coat with double cape and variations (same style as on **GB18S**)
LI2924 High-waisted dress with guimpe/blouse and variations (to wear under coat)
LI5923 Heirloom party dress with variations, 1900-1920. (same style as on **LI5921** on **GB16S**)
LS5 Leggings for **LI2824**
LUI90527 Underwear. (same style as on **LI90516** on **GB13S**)



CP851



DP1005



LI2924



LS5

GERMAN COMPOSITION BODIES AND PATTERNS

GB21S. 20.5" (52cm).

Fits:

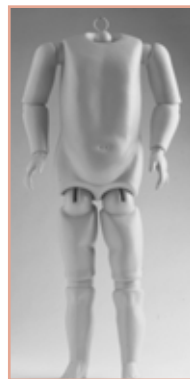
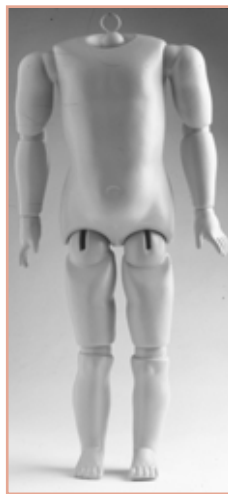
JDK MARILYN (S241)
HARRIET (OED3031)
BETTINA (S336)
K*R 117N ROSALIND (S195)
JENNIFER (S818) Discontinued
JASMINE (S827) Discontinued



DP1001

Patterns:

CP2004 Arielle dress, slip, drawers, from 1890s. (same as on FB21.5S)
DP1001 Kate Greenaway dress, pantaloons, mob cap
LI2827 Coat with double cape and variations (same style as LI2824 on GB18S)
LI2927 High-waisted dress with guimpe/blouse and variations (to wear under coat) (same style as LI2924 on GB18.5S)
LI5927 Heirloom Party dress with variations, 1900-1920. (same style as LI5921 on GB16S)
LS5 Leggings for LI2827 (same as on GB18.5S)
DPI013 Turn-of-the-century winter costume: skirt, jacket, hat, muff, slip, underwear (same as on FB21.5S)



GB23.5S. 23" (58.5cm)

Fits:

S&H SUSAN (S332)
KARIN (OED3076) Discontinued



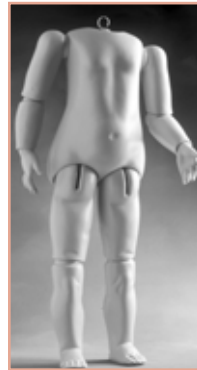
CPI501



CPI502

Patterns:

CPI501 1909-style dress, slip, drawers
CPI502 Drop-waisted dress, underwear for Susan (S332)



GB280S. 27.5" (70cm)

Fits:

LARGE SUSAN (S331)

Pattern:

CPI550 Dress for Large Susan (S331)



CPI550

LADY AND MARQUE COMPOSITION BODIES AND PATTERNS

Lady bodies (LB) are slim-waisted bodies for lady and fashion dolls. Fashion lady bodies (FLB) are recreated from antique leather bodies to save you the work of sewing and stuffing a leather body. Arms may be replaced with leather arms or covered in leather. Marque bodies (M) are taller child bodies for A. Marque and other dolls with authentic A. Marque hands.



LBI3S. 12.5" (31.75cm)

Fits:

ORIENTAL MISS CHI (S136)
E.J. FASHION (S175)
LADY PAMELA (S016H)
PORTRAIT OF JEANNE (S139)



CPI1005



CPI1006

Patterns:

CP1004 Shirt with bustle, jacket, petticoat, chemise, drawers, hat (see Lady Pamela, S016H for photo)
CP1005 Japanese kimono, slip, underpants, wig, thongs
CP1006 Chinese costume: kimono, pants, slippers

LBI90S. 18.5" (47cm)

Fits:

SWEETHEART (DAGMold)

Pattern:

CP1009 Jacket, skirt, blouse, underwear (see Sweetheart for photo)



CPI001

LBI5S. 14.75" (37.5cm)

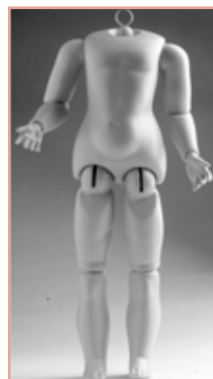
Fits:

STOBE (S026H)
SMILING BRU II LEONE (S191)



Pattern:

CPI001 Gown with drapery, bustle, slip, drawers

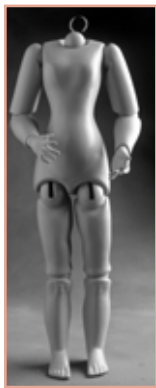


LBI95S. 18.5" (47cm)

Fits:

SCHMITT LILY (S156)
KATHRYN (OED3013)
JASMINE II (S828)
FG.YVONNE (S127) Discontinued
APRIL THE FLIRT (OED3014) Discontinued
LARGE QUEEN LOUISE (OED3021) Discontinued
JENNIE (S819) Discontinued

LADY AND MARQUE COMPOSITION BODIES AND PATTERNS



LB205S. 19" (48.25cm)

Fits:

FASHION JUMEAU (S357)
LADY OLEVIA (OED3074)
MLLE. LILIANNE (S325ST)

Pattern:

CP1007 Dress, underwear (see Fashion Jumeau, S357 for photo)

MI5S. 14.5" (37cm)

Fits:

LARGE MARQUE (S169)

Patterns:

CP702 Pants, blouse (for photo see GB15S)
CP703 Dress, slip, panties (for photo, see GB15S)
CP706 Boy's summer afternoon suit (for photo see A. Marque, S169)
CP707 Girl's afternoon tea dress (for photo see A. Marque, S169)



CP1008

LSB13. 13" (33cm)

Lady Surprise Body comes with complete assembly instructions and head to body connector.

Fits:

Portrait of Jeanne (S139)
E.J. Fashion (S175)
Lady Pamela (S016H)

Pattern:

CP1008 Blouse.



MI45S. 14.5" (37cm)

Fits:

LARGE MARQUE la (S372)

CP708 Costume coming soon



FLB16S. 15.5" (39cm)

Body comes with head to body connector and assembly instructions.

Fits:

STOBE (S026H)
F.G. MLLE. FLORENCE (S134)

Patterns:

CP1003 Stobe costume: jacket, long skirt, bonnet, slip, chemise, pantaloons
L13720 Worth Chateau ensemble from 1892: gown, petticoat, chemise-drawer combination.



CP1003



L13720

BABY COMPOSITION BODIES AND PATTERNS

Baby bodies have curved arms and legs and are jointed at the shoulders and hips. The shape of the hands and bodies varies, depending upon size. Measurements are approximate. BB = Baby Body.

BB6.5S. 5" (12.75cm)

Fits:

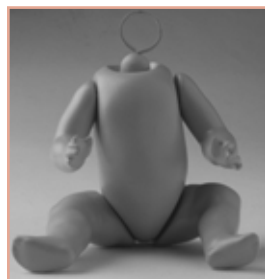
HILDA IV (S238)
BONNET BABY (S256)



L13408

Pattern:

L13408 Tiny baby layette, complete



BB7.5S. 6" (15.25cm)

Fits:

HILDA III (S237)
ARTHUR (S42)



DPI011

Pattern:

DPI011 Long baby dress, bonnet, slip, diaper.

BABY COMPOSITION BODIES AND PATTERNS

BB8.5S. 7" (18cm)

Fits:

AM DREAM BABY (S219) Discontinued
TWIRP (S3H) Discontinued



CP5050



Pattern:

CP5050 Baby dress, underwear.

BB90S. 8" (20.25cm)

Fits:

JDK CHING (OED3023)
EMERALD (S247)
RUBY & JADE (S257)
HEUBACH CHARMER (S258)
DREAM BABY (S219) Discontinued



Patterns:

DP1009 Ching's Oriental Costume: jacket, pants, slippers
LI4912 Baby dress, petticoat, shirt
LI5212 Christening gown with yoke in two styles and petticoat. Instructions for tucks and French hand sewing
CP2000 Sailor costume (for photo, see Heubach Charmer S258)



DP1009



LI4912



LI5212

BB11.5S. 9.5" (24cm)

Fits:

ORIENTAL BABY (S079)
HILDA II (234)
HAPPY II (S242) Discontinued

Patterns:

CP6002 Romper suit, jacket, bonnet, underwear
CP6003 Three-piece Oriental pajamas, slippers
LI2012 Baby's long dress with front panel and variations with scalloped Bertha collar, petticoat. 1907-style
LI5212 Christening gown with yoke in two styles and petticoat. (see BB90S for photo)



CP6002



CP6003



LI2012

BB12.5S. 11" (28cm)

Fits:

H & S LOTTI (S346)
HEUBACH POUTY BILLIE II (S37H)
Discontinued
WILLY (S844) - Discontinued
LI'L HELGA (S842) - Discontinued



Patterns:

CP6051 Romper suit, bib, hat, slippers, diapers.
LI5213 Christening gown with yoke in two styles and petticoat (same style as LI5212 for BB90S)



CP6051

BB14S. 12" (30.5cm)

Fits:

K*R 116A - HAPPY (S022H)
HILDA (S20H)
K*R 121 - RUTH (S023H) Discontinued



Patterns:

CP103 Boy's jacket, rompers, shirt
CP104 Hilda dress, bonnet, slip, underpants
CP105 Smocked dress with two types of sleeves, slip, underpants, bonnet in two styles. Smocking instructions.
LI5216 Christening gown with yoke in two styles, petticoat (same style as LI5212 for BB90S)



CP103



CP104



CP105

BB155S. 12.5" (31.75cm)

Fits:

JDK MARILYN II (S326)
BILLIE (S028H)
BRUDER ARGERLICH (S340)



Pattern:

CP3001 Long christening gown.



CP3001

BABY COMPOSITION BODIES AND PATTERNS

BB165S. 15" (38cm)

Fits:

SFBJ POUTY TWIRP (S255)

Patterns:

CP5001 Short baby dress, slip, undershirt, underpants, bonnet

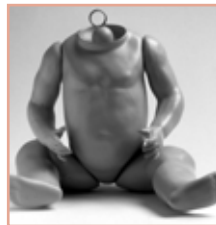
CP5002 Christening gown, slip, underwear, bonnet



CP5001



CP5002



BB17S. 14" (35.5cm)

Fits:

JDK 257 MARILYN (S241)

JUTTA (S52) Discontinued

Patterns:

CP5001 Short baby dress, slip, undershirt, underpants, bonnet (for photo see BB165S)

CP5002 Christening gown, slip, underwear, bonnet (for photo see BB165S)

MODERN COMPOSITION BODIES AND PATTERNS

Modern bodies (MB) are perfect for many modern doll heads. Jointed at the hips, knees, shoulders, elbows.

Three have unjointed arms and legs (MB140S, MB925S and MB8S) with gently bent wrists and cute feet.

MB8S. 8" (20.25cm)

Fits:

JEANNIE (OZ002)

BECKY (UC581)

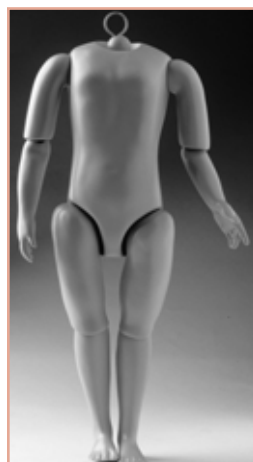
BROOKE (UC582)

CHANTIELLE (UC580)

TANYA (S829) Discontinued



CP2500



MB160S. 16" (40.5cm)

Fits:

MOLLI (M1037)

SUN-YI (M1038)

ARUNA (M1041)

SUSI (M1052)

INGA (M1042)

LITTLE ZELMA (M1006)

SWISS HEIDI (DAGMold)

ALEXIS (M1003)

ELENA (UC605)

WILLOW 22" (UC571)

SAVANNAH (UC606)

KISHUNA (DAG971)

LITTLE JEN (S820) - Discontinued

FRANZISKA (S856) - Discontinued

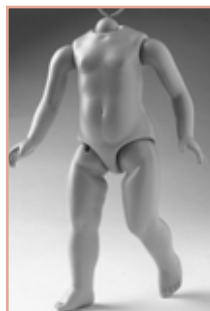
LAUREN (S850) - Discontinued

Pattern:

CP2400 Dress



CP2400



MB925S. 9" (23cm)

Fits:

SAPPHIRE (M5001)

CHERRETTE (S884)

JEANNIE (OZ002)

WILLOW 14" (UC572)

HILARY 14" (UC558)

DAWN (UC545)



CP2601

Pattern:

CP2601 Costume for Sapphire

Patterns:

CP931 Angel's dress, underwear

CP2301 Dress

CP2302 Winter suit

P029 Costume for Capri



CP931



CP2301



CP2302



P029

MB140S. 14" (35.5cm)

Fits:

ANGEL (S873)

MAY (DAGMold)

SWISS HEIDI (DAGMold)

CAPRI (M1021)

TARA (UC603)

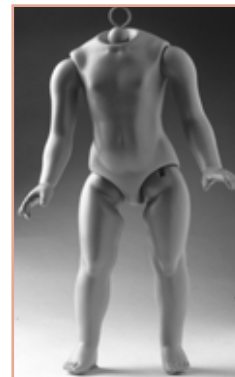
HILARY 18" (UC557)

LITTLE JEN (S820) Discontinued

CAROLIN POUPEE (S845) Discontinued

FRANZISKA (S856) Discontinued

LITTLE LAUREN (S851) Discontinued

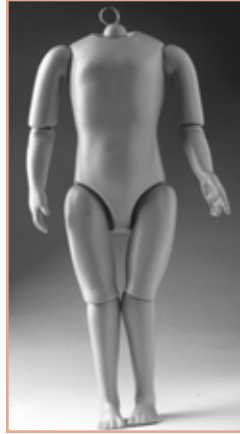


MODERN COMPOSITION BODIES AND PATTERNS

MB190S. 18.5" (47cm)

Fits:

JASMINE II (S828)
 WILLOW 27" (UC570)
 JOLIETTE (UC590)
 SABINE (UC601)
 KALEEN (UC591)
 KATE (UC604)
 AIMEE (UC650)
 HILARY 24" (UC556)
 JENNIE (S819) Discontinued



MB21.5WS. (LEFT) 21.5" (54.5cm)

Fits:

JASMINE (S827) Discontinued
 JENNIFER (S818) Discontinued

Pattern:

CP2004 Arielle's dress, slip, drawers, 1890s style (same as on FB21.5S)
 P007 School dress, slip, pantaloons for Annika (M1002)



MB21.5S. (RIGHT) 21.5" (54.5cm)

Fits:

ANNIKA (M1002)

Pattern:

CP2004 Arielle's dress, slip, drawers, 1890s style (same as on FB21.5S)



P007

MODBOD

Strong vinyl body that takes porcelain lower arms (mold for lower arms available).

MOBODI4. 14" (36.5cm)

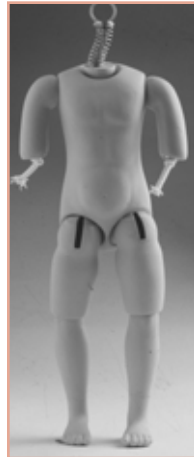
Lower arms mold: MA9003

Fits:

GISELLE II (M1009)
 GOLDY (M1031ST)
 ANNIKITA (M1007)
 JASMINE III (M1024)
 SWISS HEIDI/PETER II (M1023)
 ZELMINA (M1025)
 ROBBIE (UC102)
 DEIDRE (UC101)
 FRANZISKA II (M1022) - Discontinued

Patterns:

P013 Dress & Underwear
 P017 Country Dress & Vest
 P021 Jogging Suit
 P022 Girl suit, vest, pants
 P023 Shirt, vest, pants
 P035 Goldy Dress & Underwear



P013

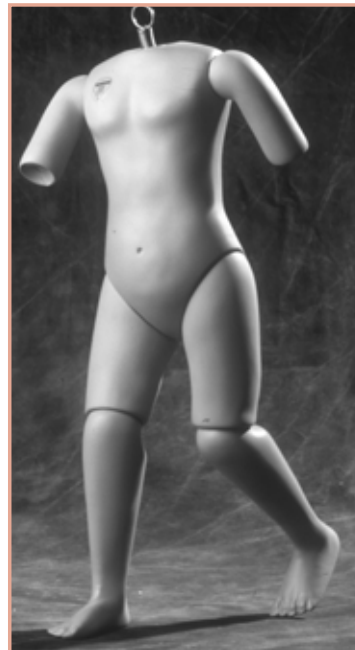
P017

P021

P022

P023

P035



MODBOD20. MODBOD20LL.

20" (51cm)

ModBod20 needs porcelain lower arms and lower legs.

ModBod20LL needs porcelain lower arms only.

MA9001 Girl arms mold or MA9002 Young lady arms mold
 Lower legs mold: ML9001 Leg mold for ModBod20 only.

Fits:

GISELLE (M1014)
 JASMINE II (S828)
 ZELMA (M1001)
 LITTLE ANNIKA (M1018)
 WILLOW (UC570)
 HILARY 24" (UC556)

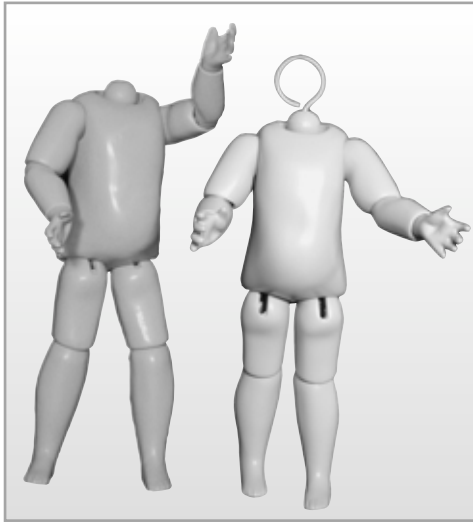
Patterns:

MP55 Zelma's dress (shown on Zelma)
 P018 Giselle dress, body suit (shown on Giselle)
 P760 Tara's dress

Toddler and SFBJ* Bodies and Patterns

Reproductions of bodies used in Germany and France. Toddler bodies have joints at the hips and shoulders only. Arms are curved, legs are straight. SFBJ* bodies have joints at shoulders, elbows, hips and knees. One of the SFBJ bodies has jointed wrists. Round little tummies. TB = Toddler body. SFBJ* = French body.
*Acronym for Société Française de Fabrication de Bébé et Jouets

SFBJ775S. (LEFT) SFBJ775AS. (RIGHT) 7.75" (20cm)



Fits:
BLEUETTE SILVER (S365)
BLEUETTE JUMENTAU (S366)
BLEUETTE GOLD (S369)

Patterns:
See *Bleuette* section.

SFBJ775AS has jointed wrists.

TB6.5S. 6" (15.25cm)



Fits:
HILDA IV (S238)
BRIDGET 222 GOOGLY (S412)
JDK 185 AMANDA (S329)
JDK 178 STEPHEN/STEPHANIE (S330)
KESTNER JOE/JOSEPHINE (S327)
KESTNER MEG (S328)

Pattern:
LI3909 Romper suit with three variations (for photo, see GB7S)

SFBJ9S. 8.5" (21cm)

Fits:
BRUDER ARGERLICH II (S360)
TWIRP (S003H) Discontinued



CP313



Patterns:

CP313 Frank's shirt, pants, hat
CP322 Boy's sailor suit, underwear, hat (see *Bruder Argerlich, S360* for photo)
LI3912 Romper suit in three variations (for photo, see GB8S)
LI5414 Boy's wardrobe: straight pants, knickers, two short jackets, shirt (same style as LI5314 on GBI10S)

TBI4S. 13" (33cm)



Fits:
HILDA (S020H)
HAPPY (S022H)
HEUBACH POUTY BILLIE II (S037H) Discontinued

Pattern:
See BB14S body.



TBI1.75S. 11" (28cm)

Fits:
HAPPY II (S242) Discontinued

SFBJ10S. 9" (23cm)

Fits:
ANGELICA BRU BEBE (S220)
WHISTLER (S010H)
FAYE (S027H)
LITTLE GRUMP (S009H) Discontinued



CP314



CP320



CP321

Patterns:

CP313 Frank's shirt, pants, hat (for photo, see SFBJ9S)
CP314 School dress, underwear
CP316 Whistler romper suit (for photo, see GB8S)
CP320 Frieda sailor dress, underwear
CP321 Angelica Bru dress, slip, bonnet, booties, diapers, rattle
LI3912 Romper suit in three variations (for photo, see GB8S)
LI5413 Boys wardrobe: straight pants, knickers, two short jackets, shirt (same style as LI5414 on GBI10S)
LUI92013 Boy's one-piece underwear, "union-suit" (for photo, see GBI10S)

TBI45S. 14" (35.5cm)

Fits:
HEUBACH POUTY BILLIE (S028H)
BRUDER ARGERLICH (S340)
JUTTA (S052) Discontinued

Pattern:
CPI06 Traditional German outfit pattern (for photo, see *Bruder Argerlich, S340*)



TBI6.5S. 15.75" (40cm)



Fits:
SFBJ POUTY TWIRP (S255)
SFBJ SANDY (S041H) Discontinued

Pattern:
CPI201 Dress



CPI201

BODY MOLDS

We have molds for every type of body: classic French, German, Lady, Baby, Toddler and Modern. Molds can be poured in porcelain slip or in Seeley's French Composition slip.

Legend:

Dolls marked with a star (*) fit the body when cast in Seeley's French Composition Slip.
Dolls marked with two stars (***) fit the body when cast in either porcelain or composition.
Dolls not marked fit the body when cast in porcelain only.

Note:

Each body is followed by a listing of appropriate head molds; head molds in parentheses are no longer available. Measurements indicated are for bodies cast and fired in Seeley's French Bisque® porcelain slip. Bodies are slightly larger when cast in Seeley's French Composition Slip. Composition slip is available in 1-gallon jugs.

GERMAN BODY MOLDS

Bodies all vary slightly. All have jointed shoulders, elbows, hips and knees.



ALB9606. 6.5" (16.5cm)

Comparable to **GB650S** composition body. Four molds, 10 lbs.

Fits the Annettes:

S327 Joe/Josephine*
S328 Meg*
S329 Amanda*
S330 Stephan/Stephanie*

Patterns:

See *Annette section*



OED3012. 16.5" (42cm)

Comparable to **GB18S** composition body. Five molds, 75 lbs.

Fits:

OED2013 Kathryn
(**S160** Large Elise I)
(**OED3014** April the Flirt)
(**OED3021** Large Queen Louise)



ALB9201. 7" (17.75cm)

Five molds, 12 lbs.

Fits:

S042 Arthur
S056 K*R 101 Peter and Marie
S151 Mein Liebling III
(**S46** Ned)
(**S157** Tadeus)

Pattern:

CPI301 Regional costume: skirt, blouse, vest, slip, apron, drawers.



CPI301



OED3071. 17.5" (45cm)

Comparable to the **GB18.5S** composition body. Seven molds, 57 lbs.

Fits:

S028H Heubach Billie**
S141 Mein Liebling**
S196 Shannon**
S197 Gisela**
S199 Mein Neuer Liebling-Rose**
(**S819** Jennie)
S828 Jasmine II
(**S52** Jutta)
(**OED3037** Little Karin)



OED3091. 13" (33cm)

Comparable to **GB13S** composition body. Five molds, 27 lbs.

Fits:

OED3025 Hans/Gretchen
S155 Johann
S167 Carla
(**S820** Little Jen)
(**S880** Mary Ann)



OED3035. 21.5" (55cm)

Comparable to **GB21S** composition body. Six molds, 121 lbs.

Fits:

S195 Rosalind
S241 Marilyn
S336 Bettina
OED3031 Harriet
OED3066 Suzanne
(**S38** Jean Claude II)
(**S818** Jennifer)
(**S827** Jasmine)



ALB9313. 13" (33cm)

Comparable to **GB130S** composition body. Five molds, 35 lbs.

Fits:

OED3025 Hans/Gretchen*
S155 Johann*
S252 K*R Mein Liebling IV*
S254 Shannon II*
S338 Inge*

Patterns:

see *GB130S in composition body section*



OED3077. 23" (58cm)

Comparable to **FB23.5S**. Seven molds, 110 lbs.

Fits:

S017 Jean Claude
S075 Jumeau Arielle
S332 S & H Susan II**
(**OED3075** Karin)**



OED3058A. 16" (41cm)

Comparable to **GB16S** composition body. Six molds, 63 lbs.

Fits:

S029H K*R114 Gretchen
S144 Mein Liebling II
(**S23** K*R 121 Ruth)
(**S37** Heubach Billie II)
(**S54** Queen Louise)

FRENCH BODY MOLDS

French child bodies are bebe bodies jointed at shoulders, elbows, hips and knees.

ALB9300. 5.5" (14cm)

Body mold for Petite series of dolls.
Comparable to **FB550S** composition body.
Three molds, 6 lbs.



Fits:

- S347** Petite Ej
- S348** Petite AT
- S349** Petite Laughing Jumeau
- S350** Petite Bru
- S351** Petite Jumeau
- S352** Petite Jumeau Lyric
- S353** Petite Screamer
- S354** Petite A Marque
- S355** Petite Steiner Kahlie
- S356** Petite FG
- S358** Petite RD
- S359** Petite Oriental
- S362** Petite PAN.

Patterns:

See *Petite* section

ALB9901. 15.5" (39cm)

Jumeau body mold with unjointed wrists. For Bru hands, use **A9192** arm mold. Comparable to **FB16JS** composition body. Five molds, 69 lbs.



Fits:

- S59** Bru Shandele II
- S80** Jumeau Arielle III**
- S126** Bru Colombine**
- S154** Paris Bebe Danielle II**
- S156** Schmitt-Lily
- S166** RD Molinne III
- S171** H-Doll, Helene
- S180** Long Face Jumeau II**
- S182** PAN
- S333** SFBJ301 Joy
- DAG** Bebe Fleur
- DAG** Swiss Heidi*
- (**S35** Miranda)
- (**S127** FG Yvonne)

ALB9200. 7.5" (19cm)

Bru type body mold for Milette series of dolls.
Comparable to the **FB8S** composition body. Three molds, 16 lbs.



Fits:

- S087** AT Silver**
- S88** RD Mora**
- S091** FG Lana**
- S092** E.j. Dollin**
- S094** Bru Shandele IV**
- S095** Jumeau Arielle IV**
- S99** Steiner Kahlie V**
- S152** A. Marque III**
- S198** Jumeau Lyric Milette**
- S343** Bebe Charmant Milette**
- (**S090** Jumeau Lacie)**
- (**S150** Laughing Jumeau)**

Patterns:

See *Milette* section

OED3072. 17" (43cm)

Jumeau body with unjointed wrists.
Comparable to the **FB18S** composition body. Five molds, 100 lbs.



Fits:

- S031H** AT Merilie**
- S078** Jumeau Arielle II**
- S081** Steiner Kahlie**
- S129** E.j. Simonne
- S153** Danielle I**
- S179** Long Face Jumeau**
- S185ST** E.j. Camille
- S193ST** Chanelle II
- S335** Eden Bebe*
- S164** RD Molinne

LADY BODY MOLD

Simon & Halbig lady-type body. Jointed at shoulders, elbows, hips and knees.



OED3075. 18" (46cm)

Slightly smaller than **LB195S** composition body. Six molds, 55 lbs.

Fits:

- S080** Jumeau Arielle III
- S154** Danielle II
- S828** Jasmine II
- S141** Mein Liebling*
- S197** S&H Gisela*
- OED3013** Kathryn
- OED3074** Lady Olevia
- S166** RD Molinne III
- (**S819** Jennie)

BABY BODY MOLDS

Baby bodies are bent-limb bodies with rounded tummies. Jointed at hips and shoulders.



ALB9433. 6" (15cm)

Baby Body Mold
Comparable to the **BB6.5S**
composition body. Three
molds, 5 lbs.

Fits the Annettes:
S238 Hilda IV**
S256 Bonnet Baby



OED3066. 13" (33cm)

Baby Body Mold
Smaller neck hole than **OED3069**.
Jointed wrists. Slightly larger
than **BB14S** composition body.
Four molds, 83 lbs.

Fits:
S022H K&R116 Happy*
S020H Hilda**
(S023 K*R121 Ruth)**



ALB9960. 8" (20cm)

Baby Body Mold
Comparable to the **BB90S** composition
body. Three molds, 25 lbs.

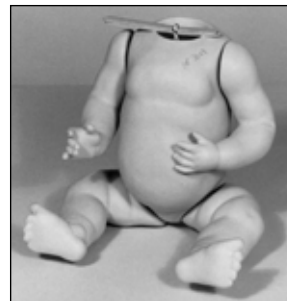
Fits:
S247 Emerald**
S257 Ruby & Jade
OED2023 Ching**



OED3043. 10-11" (25-28cm)

Baby Body Mold
Comparable to **BB11.5S** composition
body. Three molds, 44 lbs.

Fits:
S079 Oriental Baby
S234 Hilda II



OED3069. 13.5" (34cm)

Baby Body Mold
Comparable to composition
body **BB15S**. Three
molds, 62 lbs.

Fits:
S022H K*R116 Happy
S028H Pouty Billie*

TODDLER BODY MOLDS

Toddler bodies are bodies with side-slanted hip joints, shoulder joints, rounder tummies, and straight legs.



ALB9427. 5" (13cm)

Toddler Body Mold

Fits:
(S239) Hilda V)
(S418) Heubach Elva)
(S419) Googly Boy)



ALB9439. 7" (17.75cm)

Toddler Body
Two molds, 12 lbs.

Fits:
(S439) Grace Drayton Girl)
(S440) Grace Drayton Boy)



OED3090. 5.5" (14cm)

Toddler Body Mold
One mold, 30 lbs.

Fits:
OED3033 Moritz
S168R Max



ALB9412. 7" (17.75cm)

Toddler Body Mold
Three molds, 11 lbs.
Also available: Curved legs for baby version,
order # **L9412C**.

Fits:
S049 Henri**
S237 Hilda III**
S412 Bridget 222 Googly
(S006H) Peter and Marie)
Pattern:
L13909 Romper suit.

TODDLER BODY MOLDS (CONT.)



ALB9100. 8" (20cm)

Toddler Body Mold
French SFBJ body. Also jointed at elbows and knees. Four molds, 20 lbs.

Fits:
S008H JDK 221 Little Googly
(S003H Twirp)**



ALB9302. 10.5" (26cm)

Toddler Body Mold
Side-slanted hip joints. Can stand on its own. Three molds, 23 lbs.

Fits:
S010H Whistler
S011H K & H Lorie
S108 XI Girl
S136 Miss Chi
S158 Ingrid



ALB9301. 9" (23cm)

Toddler Body
Three molds, 18 lbs.

Fits:
S010H Whistler
S011H K&H Lorie
S027H S & H 150 Faye
S194 Robert
S323 Kestner's Anita

MODERN BODY MOLDS

Modern bodies are shapely and slip with unjointed elbows and knees.



MALB3002. 6" (15cm)

Modern Body Mold
Three molds, Wt. 10 lbs. Storybook body mold.

Fits:
M3002 Molly
M3003 Little Hanna



ALB9008. 8" (20cm)

Modern Body Mold
Comparable to MB8S composition body. Three molds, 15 lbs.

Fits:
OZ002 Jeannie
(S829 Tanya)



MALB5001.

9.25" (23.5cm)
Modern Body Mold
Comparable to MB925S composition body.
Three molds, 16 lbs.

Fits:
M5001 Sapphire
S884 Cherrette*

MALB5002.

12" (30.5cm)
Modern Body Mold
Four molds, 29 lbs.

Fits:
M5002 Amber
M1013 Little Swiss Heidi

ALB9873.

14" (36cm)
Modern Body Mold

Fits:
S873 Angel**
M1028 Li'l Kerstina
S881 Oliver
UC603 Tara
UC557 18" Hilary
UC620 Nicholas
M1025 Zelmina
M1007 Annikita
M1021 Capri
M1023 Swiss Heidi II May (DAG mold)**

Patterns:
P029 Capri costume pattern.
CP931 Summer dress and underwear.
CP2301 Dress and pinafore
CP2302 Winter outfit

MISCELLANEOUS MOLDS

EYE MOLDS

Make round dolls' eyes by casting in porcelain. (*Eye decals not available.*)

EYE10-12, 8 eyes in mold, 10-12mm
EYE14-16, 8 eyes in mold, 14-16mm
EYE18-20, 8 eyes in mold, 18-20mm
EYE22-24, 6 eyes in mold, 22-24mm
EYE26, 4 eyes in mold, 26mm

TONGUE MOLD

Make wobbly or stationary tongue for German, Modern or Baby dolls. Reference: *Doll Artisan*, Vol. 18, No. 2. Cast in porcelain, form in cernit, FIMO or Sculpey. Six sizes in mold.
TONGS Tongue mold.

PATE MOLDS

Make felt pates for your French and German dolls.
Instructions: *French Dolls*, page 50.

FP French Pates mold,
4 sizes 2.25" - 3" (5.5 - 7.5cm)
GP German Pates mold,
6 sizes 1.25" - 2.25" (3 - 5.5cm)

TEETH MOLD



To cast (or press) porcelain teeth for modern or antique dolls. Make a single tooth, a pair, four or up to six teeth. To make teeth, use with Deco Dip, plasticizer, mold scraper, Full Moon Galaxy Glaze (a white high-fire glaze), and lace tool.

Step-by-step instructions on www.seeleys.com or in *Dollmaking* April 2002, page 46-47.

SC335 Teeth Mold. Wt. 4lbs.

PORCELAIN SLIPS



TO SEE ALL PORCELAIN SLIP COLORS IN COLOR, PLEASE REFER TO THE CENTERFOLD IN THIS CATALOG.

General Information:

For 50 years, dollmakers and porcelain artists have used Seeley's porcelain slip to create the world's most beautiful pieces. We use only the finest ingredients. Our slip is thoroughly blended; then it undergoes a two-step filtration process to remove all impurities. Every batch of our porcelain slip is checked for viscosity and specific gravity, and we fire samples from every batch to make sure it meets our high standards.

Seeley's porcelain slip pours easily. It is strong in the greenware; it won't crack, even if left in molds overnight. An extended firing range makes for no-fault firing. Our slips fire to bisque that's free of specks and beautifully translucent.

Casting Seeley's Porcelain Slip

1. Stir well.
2. Use slightly damp molds. Spray or "mist" the inside of the mold with distilled water to dampen.
3. Band mold tightly and pour slowly and steadily against one side of the pour hole. Pour the slip all the way to the top of the mold, and then let it "shrink" a bit and top it off.
4. Check thickness of the casting at the pour hole to determine the right moment to drain.
5. After the slip has reached the desired thickness inside the mold, generally 1/8" (2-3mm) thick, empty it back into its container slowly and continuously.
6. Leave the mold with pour hole down for additional draining. If you do not have a pouring table, let the mold rest slightly tilted on a stick. The amount of time you leave the casting inside the mold varies, but in most cases, the casting can be taken out within 20-60 minutes.
7. If a mold won't release the casting, don't force it. Leave it in a little longer, and then try again. Try lifting the back half of the mold first. Wait 5-10 minutes to give the greenware a chance to shrink further; then remove the other side of the mold. Let the back of the cast head or piece fall into your cupped hand. Don't wear jewelry or hand cream.

Soft Firing Bisque for Dust-Free Cleaning

To clean your fired casting without producing dust, you should soft-fire your greenware to cone 018 (Approx. 1285°F to 1386°F, 697°C to 753°C). The Dust Free Cleaning technique considerably reduces health hazards in the handling of porcelain. (This technique is more fully explained in the Golden Key to Porcelain Dollmaking #GOLDKEY.)

Kiln Sitter Operation:

Place a small cone 018 in the kiln sitter, set your kiln

on Low, and fire with peepholes open for one hour. Turn the temperature up to Medium, with peepholes still open, until the kiln shuts off automatically.

Controller Operation:

Set your controller to increase in temperature at a rate of 500°F (260°C) per hour until it reaches 225°F - 275°F (107°C - 135°C). Hold for 1-2 hours, then increase temperature at a rate of 500°F (260°C) per hour to 1300°F - 1450°F (704°C - 788°C). Witness cone 018 touching shelf.

After the soft-fired ware is cool, submerge in water and clean it while it's wet - you won't have a speck of dust. Refer to the "Casting, Cleaning and Firing" instructions (#G14) for complete cleaning information.

Bisque Firing

Kiln Sitter Operation: Fire on Low for 1-2 hours, peepholes open. Fire on Medium for 1-2 hours, peepholes open. (If pieces have been soft-fired, omit Low and start your kiln on Medium firing. Shut the lid and fire 1-2 hours. Then proceed to High.) Leave peepholes open. Set on High and fire until kiln sitter shuts kiln off.

Seeley's Colored Porcelains (such as Seeley's French Bisque) and Bone White and Lady White.

Cone firing: Use junior cone 6 in the kiln sitter. Use witness cones 5, 6, and 7 on the kiln shelf. After firing, cone 5 should be touching on the shelf, cone 6 should be bent to a 10 to 11 o'clock position and cone 7 should not have bent at all.

Controller firing: Set the controller to fire 500°F (260°C) per hour to 2000°F (1094°C). Then set controller to fire 100°F (38°C) per hour to 2185°F (1197°C). Final temperature range: 2170°F to 2190°F (1189°C to 1200°C).

Seeley's White Porcelains

Cone firing: Use a junior cone 7 in the kiln sitter. Use witness cones 5, 6, and 7 on the shelf. After firing, cone 5 should be down hard, cone 6 should be bent from 10

o'clock position to touching the shelf, and cone 7 should have started to bend.

Controller firing: Set the controller to fire 500°F (260°C) per hour to 2000°F (1094°C). Then set the controller to fire 100°F (38°C) per hour to 2205°F (1208°C). Final temperature range is 2190°F to 2210°F (1200°C to 1210°C).

China Firing:

(see china paint section)

The sitter cones and controller schedules used in firing your kiln will vary depending upon several variables: age of elements, condition of pyrometer and condition of thermocouple. Because of this, it is important to do test firings and keep a firing log to optimize your kiln firings and to get the best quality bisque possible.



This chip chart is available for purchase (#PORCHART).

China Paints

Consistent Color is the hallmark of fine china paints, and no paints are more consistent than Seeley's. Years of research and experience have gone into our line of paints and media, and because they have been developed especially for dollmaking, they are paints that will give you superb results.

All china paints come in a dry granular form that you may mix with your choice of media (water or oil based). Paints are packaged in unbreakable plastic vials with screw lids (net wt. 3.5-4.5g). The alphanumeric code on the lid is the part number. Our entire line of doll colors is lead-free for your health. Colors are gloss (G), satin (S), matt (M), glitter (S) and decorative (D). Look for this letter in the part number to indicate type.

To see all china paint colors in color, please refer to the centerfold in this catalog. Made in the U.S.A.

For complete china painting and firing instructions, please order the Waterbase Technique™ worksheet (**GI23**). For complete Dimensional Doll Painting instructions, please order the "DDP Guidelines" worksheet (**GIMI**). GI = General Instructions.

TO FIRE CHINA PAINTS:

Kiln Sitter Operation: All paints fire to a witness cone 018 (junior cone 017 in sitter). Set your kiln on MEDIUM for 15 minutes - .5 hour with peepholes open. Turn the temperature up to HIGH until kiln shuts off automatically. Be sure to use witness cones to check firing.

Controller Operation: Set your controller to increase in temperature at a rate of 1000°F (538°C) per hour until 1350°F - 1425°F (732°C - 788°C). Leave peep holes open until shut off. Be sure to use witness cones to check firing.

If china paint rubs off, fire 1 cone hotter (+40°F or 5°C)

If china paint is too glossy, fire 1 cone cooler (-40°F or 5°C)



Blush Pacs

Seeley's offers two cheek china paint colors in a convenient 'pac'. Like a makeup compact, the paint is pre-mixed with a water-based medium and ready to use with Seeley's "Complexion Collection" brushes for painting cheeks. Net wt. 8-10g.

BPAC1 Cheek Blush china paint. (same as **25G**)

BPAC2 Ruby Cheek Blush china paint. (same as **26G**)

Media

Media are packaged in plastic or glass bottles, with screw lids. Some are available in 1-ounce and 1-pint sizes (PT = available in pint size). Water based media are in plastic squeeze bottles and oil-based media are in glass bottles.



WATER-BASED MEDIA

Using water-based media with china paints has many benefits, including easy brush clean-up with water, fewer fumes during the firing and the ability to add water to paint mixture if needed. For more information, please order the "Waterbase Technique™" worksheet (**GI23**).

Ultra Fine Line Medium (1914 or 1914PT): Odorless medium for eyelashes and eyebrows, super smooth formula helps you paint delicate lines. Tinted yellow for easy identification. No clumping or blotching (you do not need to use Anti-Blotch with this medium)

Line Medium (1910 or 1910PT): Odorless, non-drying medium for fluid fine lines and strokes. Tinted lavender for easy identification.

Area Medium (1912 or 1912PT): Odorless, drying medium for general painting and conditioning of bisque. More liquid and thinner than Line Medium. It will dry more quickly than Line Medium. Colorless.

Anti-Blotch (1913): Slightly brownish liquid to mix sparingly with Line Medium to prevent blotching.

OIL-BASED MEDIA

They consist of semi-thick liquids that are for general or detail painting.

Brushing Medium (1900A or 1900PT) – open light oil for general painting and conditioning of bisque.

Mixing Medium (1903 or 1903PT) – semi-open, heavy oil for general painting.

Tinting Oil (1906) – closed, heavy oil for general painting and pouncing overall color.

Pen Medium (1906A or 1906APT) – non-spreading oil for fine line painting.



Balsam of Copaiba (1908) – closed, extra heavy oil for building up color.

Lavender Oil (1917 or 1917PT) – semi-open extra-light oil for thinning other oils or conditioning bisque.

Turpentine (1901) – for cleaning all brushes used with oil-based media. (this is not a medium to mix with china paint)

China Paint Kits

Buy these great kits for beginner or advanced dollmakers. Use these to make reproductions of antique dolls, modern dolls, and figurines. Many of our kits include complete china painting instructions.



Beginner's Doll Painting Kit

An exceptional quality and value; everything you need to start painting porcelain dolls.

Kit contains four china paints: Onyx Black, Cheek Blush, Rose Red, Eyebrow #3, Copper; two water-based media: Area and Line; three brushes: Modern Lip, China Mop, Modern Liner; and tools: Feather knife, two Super Doll Sponges, palette knife, glazed tile, and a grit scrubber.

BKIT2 Beginner's Doll Painting Kit.



Dolls 4 Fun Brush & Tool Kit

Beginner kit. This kit is your key to success in making some of your very first dolls! We have taken great care in selecting the tools that you will need to use over and over again when you are creating your dolls. Brushes you will learn to use with ease and tools that will make cleaning your soft-fired greenware a snap.

Enclosed in kit*: Small Carving Tool (for cleaning) **ST03**, Double Ball Stylus (for cleaning) **ST05**, Feather Knife (for cleaning) **FEAKN**, Comfy Scrub (for cleaning) **CMFYSCRUB**, Pro Mop (for painting cheeks and overall wash) **SBR43**, Modern Lash (for painting eyelashes and fine lines) **SBR44**, Modern Lip (for painting lips and other small areas) **SBR30A**, Angular Shader (for shading color) **SBR31A**, Small Square Shader (for blending and shading color) **SBR01A**, Mini Green Clean (for cleaning detail areas) **SBR45**.

KTBR4FUN 4 Dolls for Fun Brush & Tool Kit

*Tools and brushes in kit may vary.



Dolls 4 Fun China Paint Kit

Beginner kit. A great kit to start off your dollmaking career! We have taken great care in selecting the china paints that you will need to use over and over again when you are creating your dolls. Our latest medium, Ultra Fine Line, is easy to use for silky smooth application of color. All of the china paints are lead free for healthy dollmaking.

Enclosed Paints: Satin Black, Antique Ruby, Finishing Brown, Rosewater, French Manicure Pink, Manicure White, Pink Fawn Shadow, Cheek Blush, Ultra Fine Line Medium, Super Doll Sponge.

KTCP4FUN 4 Dolls for Fun China Paint Kit

Glitter Collection

Paint a sparkle on your doll to create energy and fun! Our new Glitter Collection will inspire you to create imaginative dolls and porcelain pieces. Eight lead-free colors for your palette. Available separately or as a kit. Kit includes all 8 colors, Line Medium, 2 Super Doll Sponges and instructions to paint the Antique Shoe (**SC241**) and how to use Deco Dip (**DIP**).



Lead-free colors include: Satin Pearl Glitter, Satin Pink Tourmaline Glitter, Satin Peridot Glitter, Satin Citrine Glitter, Satin Turquoise Glitter, Satin Sapphire Glitter, Satin Amethyst Glitter, Satin Aquamarine Glitter
DDSKIT1 Glitter Collection Kit.

China Paint Kits



The Jewel Collection

A selection of the boldest, brightest jewel tones in the decorator line of china paints. Perfectly suited for decorating porcelain jewelry, figurines, masks and other creative projects.

In addition to a detailed worksheet for completing your first project, the kit includes the following: Torrid Red, Cayman Blue, Wisteria, Pink Frosting, Lemon Drop, Tropical Blue, Green Apple, Champagne Sparkle, Ultra Fine Line Medium, three Super Doll Sponges, and a worksheet for the Charlotte figurine.

DDCPKIT1 Jewel Collection Kit



Oil-Based Kit

Designed for beginner dollmakers who prefer china painting with the oil-based mediums.

Contains eight china paints: Celeste Blue, Antique Pompadour, Yellow Red, Chestnut Brown, Golden Brown, Satin Black, Manicure White, Onyx Black and Matter. Two oil based media: Brushing Medium and Pen Medium. General china painting instructions included.

BCPI Oil Based China Paint Kit

Ethnic Collection

"Complexion Collection" kit designed for painting dolls with darker complexions. Luscious colors bring to mind the rich skin tones of Africa, Jamaica, India and other exotic locales. A palette of both warm and cool colors selected for enhancing the complexions of dolls cast in Aztec Tan, French Chocolate, Mohican and Brown Velvet porcelain slip. Includes glazed tile, decal and instructions for applying decal to tile. Includes a special jar with round sponge for blotting dry paint. Includes color worksheet and instructions for painting Sabine in the Ethnic Collection.

Lead-Free china paint included: Miraja Glow (99G), Sheer Cinnamon (161G), Espresso (93G), Opulent Brown (136G), Mulberry Kiss (119G), Dusky Lilac (65M), French Chocolate Shade (118G), Satin Black (69S).

KTCPETHN Ethnic Collection China Paint Kit



Decorative Arts & Parian Kit for Figurines and Parian Dolls

UPDATED and with instructions on painting with the products enclosed and the Rochard Technique.

Kit Includes: Liquid Bright Gold, Opal Luster, Gold Essence and Rochard Paste China Paint, Clear Glaze (4 oz.) and two sets of instructions (how to use Gold and Rochard paste and how to use Overglaze). Now comes in new pretty packaging. The Gold Essence replaces the Brush Cleaner in the kit. You can use the Gold Essence for cleaning your brushes (after using gold and opal) and also to thin your GOLD if you need to.

DKPD Decorative Arts & Parian Kit

Baby Collection

"Complexion Collection" kit designed for painting baby dolls. Delicate, delicious colors perfect for projecting an air of softest innocence. A palette of colors in the cool range selected for enhancing the complexions of dolls cast in Pale Rose, French Bisque, Dresden and Naturelle porcelain slip. Includes a glazed tile, decal and instructions for applying decal. Includes a special jar with round sponge for blotting dry paint. Includes color worksheet and instructions for painting Ellie with the Baby Collection.

Lead-Free China Paints included: Petal Pink (156S), Dark Cherry (157S), Eyelash Brown (155G), Mahogany (14G), Shading Gray (146G), Lavender Mist (87G), Golden Blonde (144G), Russet (12G).

KTCPBABY Baby Collection China Paint Kit

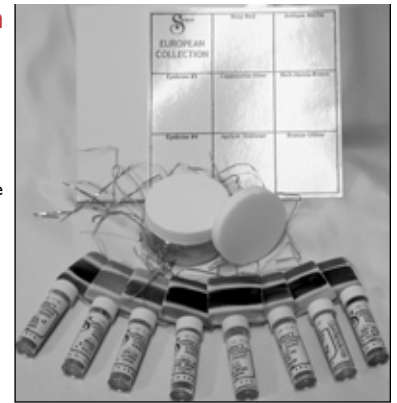


China Paint Kits cont.

European Collection

"Complexion Collection" kit designed for painting dolls with complexions kissed by the sun. A selection of earthy tones favored by top European doll artists. A palette of colors in the warm range selected for enhancing the complexions of dolls cast in Aztec Tan, California Sunrise, Golden Tan, India Gold and Naturelle porcelain slip. Includes glazed tile, decal and instructions explaining how to fire on decal. Includes a special jar with round sponge for blotting dry paint. Includes color worksheet and instructions of how to paint Annika in European Collection.

Lead free china paints included: Cappuccino Glow (**I07G**), Apricot Shimmer (**I60S**), Rosy Red Cheek Blush (**I43G**), Eyebrow #8, Antique Mocha (**I27S**), Eyebrow #4, Dark Brown (**96S**), Eyebrow #3, Copper (**94S**), Rich Henna Brown (**I6G**), Bronze Glitter (**I59S**).
KTCPEURO European Collection China Paint Kit



Egg & Lithophane Color Burst Kit

Comes with one time use sachets of all of china paint colors you need to paint the egg and lithophane, complete instructions for Egg (applying decal and china painting) and for Tea Rose Lithophane (history and china painting). Colors also great for painting the Candlelight Lithophane and Lithophane base.

KTCPEG Egg & Lithophane Color Burst Kit.

Purchase Egg (mold: **SC270ST** or bisque: **PBISQ270**), Tea Rose Lithophane (mold **SC441** or bisque: **PBISQ441**) and Candlelight Lithophane (mold: **SC442** or bisque: **PBISQ442**) and Lithophane base (mold: **SC443** or bisque: **PBISQ443**).

Gabrielle & Box Color Burst Kit

Make the 5" (12.5cm) bust Gabrielle or a porcelain box with jewelry attachments with the help of Seeley's new "Color Burst Kit". One time use sachets of all of china paint colors you need to paint Gabrielle and your box. Comes with complete instructions on casting, glazing, lace draping and china painting. Bonus: eight different glitter china paint sachets to give your porcelain pieces a fun look.

For added fun, use Seeley's Decorative Arts Kit for applying Opal Luster; Gold, Rochard and glaze (part **DKPD**).
KTCPG Gabrielle Color Burst Kit.



Hansi Color Burst Kit

China paint the Heubach figurine *Hansi* with the help of Seeley's new "Color Burst Kit". One time use sachets of all of the china paint colors you need to paint *Hansi*: Bisq-Tone #7 Peaches 'N Cream, Classic Yellow Red, Ming Blue, Ebony Black, Eyebrow #1 Caramel, Eyebrow #2 Olive Brown, Ruby Cheek Blush, and Whipped Cream.

Comes with complete china painting instructions.

KTCPHAN Hansi Color Burst Kit

Purchase *Hansi* mold (item **SC275ST**) or *Hansi* bisque (item **PBISQ275**) to make him.

Heinrich & Henrietta Color Burst Kit

China paint the Heubach figurines *Heinrich* and *Henrietta* with the help of Seeley's new "Color Burst Kit". One time use sachets of all of the china paint colors you need to paint them: Bisq-Tone #2, Eyebrow #1 Caramel, Eyebrow #2 Olive Brown, Ebony Black, Ruby Cheek Blush, Classic Yellow Red, Igloo White, Fresh Celery, Palmetto, Meteor Blue.

Comes with complete casting, cleaning, glazing and china painting instructions. Purchase molds for *Heinrich* (item **SC279ST**) and *Henrietta* (item **SC280ST**) to make them. Optional: To spot glaze on them for added effect purchase Galaxy Glazes: Midnight Blue (item **GGLI13**) for blue version or Carob Corona (item **GGLI09**) for brown version.

KTCPHH Heinrich and Henrietta Color Burst Kit.



BRUSHES

We offer a wide range of brush styles for the discriminating doll artist. Most of our brushes are specifically designed for porcelain doll painting and tested by our certified Doll Artisan Guild Instructors. Our brushes are made with top quality hair, seamless nickel ferrules or quills, and kiln-dried handles. Try them and see what a difference they make to your dolls.

DESIGNER LINE BRUSHES

These are specifically designed for painting with the Waterbase Technique™. Each brush is finely crafted, with a short handle that makes it very comfortable to use. Most brush handles are color-coded for easy identification.

Complexion Brushes

Brush is for applying overall washes, cheeks and hair on modern and classic dolls. The bristles in these firmly-packed brushes are a blend of synthetic and natural capra hair, allowing them to perform both as absorbent mops and resilient pouncers. Once you have tried this, you will never go back.

SBR79 Mini

SBR80 Small

SBR81 Large

Contour Brushes

These natural camel hair brushes, which are a custom-designed combination of filbert and mop, are ideal anytime you want to blend, shade or contour paint on doll faces or body parts.

Excellent for Dimensional Doll Painting of modern dolls, but also an important tool for painting classic dolls. Use this brush to "over blend" for the final, perfect result.

SBR84 Mini

SBR82 Small

SBR83 Large

Brushes for Painted Hair

The perfect brushes for painting hair on all-bisque dolls, babies, and parians. When you load the brush the synthetic bristles separate, allowing you to paint fine streaks of color. A "must-have" for every dollmaker's brush collection.

Instructions in *Dollmaking* magazine, June 2002.

SBR86 Large Hair Brush

SBR85 Small Hair Brush

Lip Brush #1

Fine point for precise and smooth application of lips from edge to edge. Good coverage on rounded areas. Also for nose dots, eye dots and shaping. Synthetic bristles. Yellow tip on handle.

SBR19

Medium Area Brush

For larger dolls – applying lip color, smoothing and shaping. Use to apply shadow above the eyes and to color iris. For pupil on larger dolls and eye dots. Good overall coverage for small and mid-sized areas. Synthetic bristles. Maroon tip on handle.

SBR28

Large Area Brush

Loads well, so large areas are covered with one stroke. For spot application and small dolls. Synthetic bristles. Pink tip on handle.

SBR29

Eyelash Liner #1

Popular brush for tapered lashes and painting with an even load, place and pull rhythm. Good for lip accents and light accents on hands and feet. Synthetic bristles. Blue tip on handle.

SBR20

Eyebrow Line #2

For sharp, thin brow lines. Useful for light colored feathering found on many modern dolls. Also works well for tapered long lashes on large dolls. Synthetic bristles. Green tip on handle.

SBR18

Accent Liner

For well-curved accent lines and lashes. Excellent for lid lines, finger nail outlines, and soft accents on fingers, hands, knees and feet. Also good for tiny brows on small, medium and large dolls.

Superfine kasan squirrel hair bristles. Orange tip on handle.

SBR22

Eyebrow Brush #1

For small to medium eyebrows, especially French. Brush strokes will flow evenly as this natural brush does not need to be reloaded frequently.

Pure Kazan squirrel hair bristles, soft and thin.

Red tip on handle.

SBR17

Super Brow

Extra long, fine bristles. Especially developed for larger and longer brows, underbrows, and soft feathering of brows on early French dolls. Kazan squirrel hair bristles. Purple tip on handle.

SBR27

Large China Mop #8

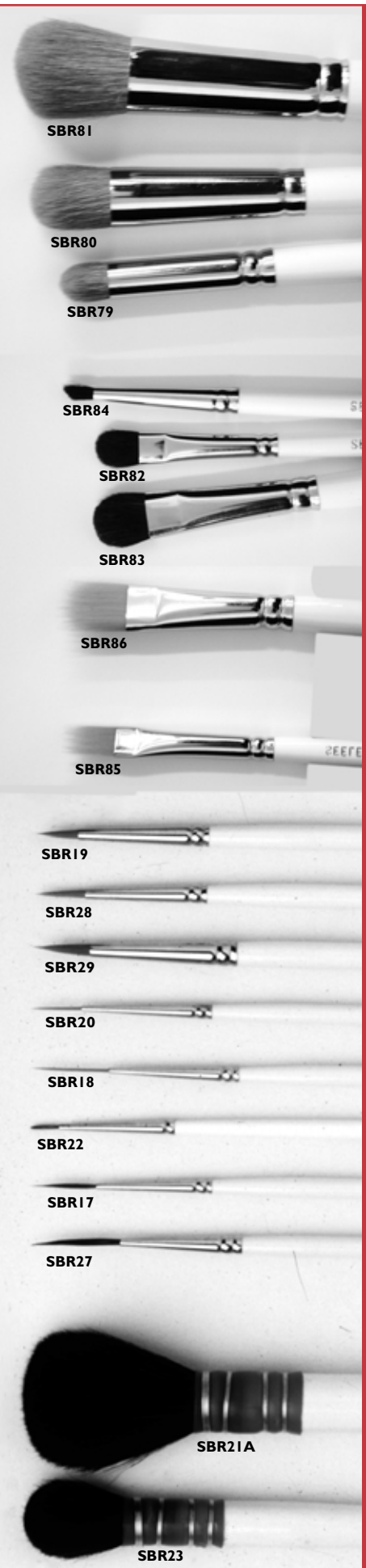
Large, soft brush for blending overall wash. Ideal for blushing cheeks on larger dolls. Natural bristles. Black tip on handle.

SBR21A

Small China Mop #5

Small, puffy, short mop for overall wash, cheek blush on medium and smaller sized heads. Light blending allows for an even coverage and a softer look at temples and forehead. Medium-gray tip on handle.

SBR23



PRO SERIES BRUSHES

Your value line from Seeley's brings you great quality at an affordable price. This value line is perfect for beginners and advanced dollmakers alike. The series is home to many specialty brushes that every dollmaker needs and complements our Designer Line in looks and application.

Modern Lash

Synthetic liner perfect for fine line around the iris. On small dolls, use for pupils and upper and lower lash lines, and for the tear duct line along the lower lash line.

SBR44

Pro Mop

Soft mop for blending overall wash color and cheeks on small to medium sized dolls. Soft pony hair bristles.

SBR43

Square Shader

Medium length brush that will hold good reserve of paint yet maintain straight, sharp edge. Use to get color into mouth and body crevices. Blend out color so there is not a definite line where color begins and ends. Red sable bristles.

#SBR01A Small

#SBR02A Medium

Angular Shader

Angled synthetic brush with bristles formed in even, angled edge. Ideal for smoothing lips and shading. Use same method for painting eyes on large dolls.

SBR31A

Modern Lip Brush

Midsized, synthetic hair brush ideal for applying lip color to small and medium sized dolls. Use to apply shadow above the eye and to color the iris and pupil on small to medium dolls. Also for nose dots, shoes, socks, bows, ribbons and other clothing on all-bisque dolls.

SBR30A

Stippler

Use for pouncing and setting color on any part of doll, giving an even, light application. Build up color. Also use to blend baby hair for a soft look. Ox ear bristles

SBR11A Small

SBR12A Medium

X-Fine Detail

Extra short, bristle. Small and manageable; idea for find dark line that rims the iris and upper and lower lash lines. Use also for painting small dolls and eye highlights. Use for light shadow in sclera just under eyelid. Red sable bristles.

SBR10A

Filbert Blender

Brush with rounded corners. Ideal brush to blend colors so there is not a definite line where color begins and ends. Blend color on face – eyelid shadows, around nose, creases above lips and in china and ears. Use to blend and shade colors on the body (back of hands, fingers, top of feet, toes, ankles knees, elbows, buttocks, back, breasts and tummy). Red sable bristles.

SBR29A Small

SBR32A Medium

Clean Up Brush

Great new brush for cleaning up your china painting mistakes. Use for removing or shortening single eyelash and eyebrow strokes. Redefine lips and eyebrow shapes. Moisten in water, blot on lint free towel. Has a very fine tip to reach in for very detail clean up. Sable bristles, with a very fine tip for detailed clean up.

SBR49

PETITE SERIES BRUSHES

Painting small dolls? We have a "petite" solution. Whether you're making Petites, all-bisques, figurines or other small dolls, you need smaller sized brushes for painting delicate features. Short pink handles. Sold separately or in a kit with complete instructions!

SBR71 Petite Lip.

SBR72 Petite Shader.

SBR70 Petite Mop.

KTBRP Petite Brush Kit (all three).

KwikClean BRUSHES

Each brush made of softest natural capra hair. Use when moistened with water. Pre-clean seams and imperfections in greenware in the leather hard stage in preparation for the final cleaning of soft-fired ware in the Dust-Free Technique. Great for making figurine greenware attachments. Comes in 6 sizes in singles or as a kit of 6. Instructions included in kit or on www.seeleys.com website.



(from top to bottom in photo)

SBR90 KwikClean Brush #1 (smallest)

SBR91 KwikClean Brush #2

SBR92 KwikClean Brush #3

SBR93 KwikClean Brush #4

SBR94 KwikClean Brush #5

SBR95 KwikClean Brush #6 (largest)

KTBRKC KwikClean Brush Kit (all 6 brushes).

GREEN CLEAN BRUSHES

These make cleaning soft-fired greenware a snap! The unique shape fits all of your cleaning needs. Brushes work well with eyes, toes, fingers, ears or any other crevice that needs shaping. They are filbert-shaped, stiff-bristle brushes on light-green handles. In four convenient sizes.

SBR42

SBR41

SBR40

SBR45

SBR42 Large

SBR41 Medium

SBR40 Small

SBR45 Mini

KTBRGC Brush Kit (3 brushes, SBR40-42)

BRUSHES (CONT.)

Ultimate Shaders

Three sizes of tapered square shaders used for applying, blending and dry brushing china paint on dolls and decorative porcelain pieces of all shapes and sizes. Made of Kolinsky sable, which is the finest quality natural hair available, the brushes are extremely soft and absorbent, thus reducing streaking in the paint. The tips of the brushes are finely chiseled, giving you much more control of the placement of the paint and allowing you to reach into even the tiniest crevices. When used moist, the Ultimate Shaders are also excellent for cleaning up painting mistakes. All three sizes are must-have tools for the discriminating porcelain artist!

SBR52 Ultimate Shader/12

SBR51 Ultimate Shader/8

SBR50 Ultimate Shader/2

Artist Gold Brushes

This series of brushes uses state-of-the-art technology to mimic the absorbency of natural hair with the benefits of synthetic fiber. The three brush designs that you use the most are available in one introductory kit containing the Ultra Lash, a Best Brow and a Lip Definer. Brushes also available separately. Brushes have bronze colored handles with a gold tip. How-to article in Dollmaking Apr 2001 magazine.

SBR46 Ultra Lash.

SBR47 Best Brow.

SBR48 Lip Definer

BGBRKT Artist Gold Brush Kit (3 brushes).

Multipurpose Blender Brushes

These taklon brush are perfect for all of the following uses: Cleaning greenware, staining composition bodies with stain, overall wash application, applying glaze, applying media to head, then wipe off excess with Super Doll Sponge. Buy separately or in a kit of 3 sizes

SBR105 Multipurpose Blender/2 (6mm wide)

SBR106 Multipurpose Blender/6 (8mm wide)

SBR24A Multipurpose Blender/12 (12mm wide)

KTBRMP Multipurpose Blender Kit (all three brushes)

Kit includes instructions.

Round Taklon Brush

Brush for cleaning greenware or soft-fired ware. Clean out eyes, ears and nostrils easily. Use also to paint and stain composition bodies.

SBR25A



BRUSH ACCESSORIES

Wipe Out Tool

A fine tipped rubber tool used to remove fine lines of china paint. The soft-tip makes this a good tool for pieces that require a delicate touch.

SBR16A

Brush Traveler

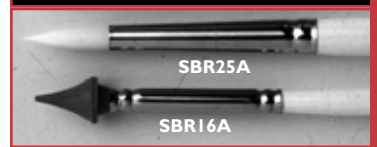
The best way to keep your brushes neat, clean and organized. Great holder for everyday use or to keep your brushes separated and easy to access during classes and seminars. Hinged holder lays flat and has a snap-on plastic cover for transport and storage. 9" x 5.5" x 1" (23 x 14 x 2.5cm) (Brushes in photo sold separately.)

#BT

Rest-A-Brush

If you've ever experienced the frustration of having your brushes roll off the table while you're painting, you'll love our Rest-A-Brush. Handy size and shape keeps as many as six brushes within easy reach and bristles up. Made of non-skid rubber. A very inexpensive, must-have tool! (Brushes in photo sold separately.)

#RAB



CASTING SUPPLIES



Casting Kit

For complete casting instructions, please order the "Casting, Cleaning and Firing Greenware" worksheet (G14).

Casting Kit

Fabulous kit for casting porcelain or stoneware slip. Great for beginners and advanced casters. Includes: sponge, scalpel, mold duster, mold scraper, 1-ounce slip thinner, 1-ounce separator, strainer, white taklon brush, two KwikClean brushes, stirring stick and complete casting instructions. Comes in handy re-closable case.

KTCAST Casting Kit.



Deco Dip



Slip Thinner

Deco Dip

Dip silk flowers, cotton lace, cotton yarn in Deco Dip and attach to your favorite porcelain piece (like Rosalinda!). This 'dipping porcelain' is the same color as Lady White and can be attached in the greenware or soft fired ware stage. Use it for all sorts of add-ons.

Comes with complete instructions. See Rosalinda article in the June 2001 *Dollmaking* for complete information.

DIP Deco Dip (1 pint jar).

DIP4 Deco Dip (1 4-oz. jar).

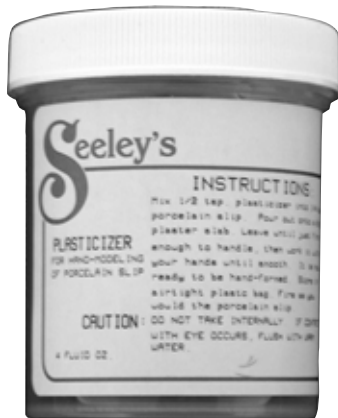
DIPG Deco Dip (1-gallon jug)

Slip Thinner

Perfect for controlling the consistency of slip in applications where a thinner slip is desired or to rejuvenate thickened slip. Can be added with water in small amounts directly into slip and mixed thoroughly.

SST04 Seeley's Slip Thinner, 4-ounce.

Packaged in 4 oz. plastic squeeze bottle with a spout.



Plasticizer



Rubber Bands

Plasticizer

Thick, clear liquid that mixes with porcelain slip to create a pliable, porcelain-like clay.

Comes in 4 oz. (118ml) plastic jar

PLAST

Rubber Bands

Band mold pieces together during casting.

Comes in 1-lb. (.45kg) box.

RUBND3 3" (8cm)

RUBND5 5" (13cm)

RUBND7 7" (18cm)

RUBND9 9" (23cm)

Feather Knife

Finest cut-out and greenware cleaning tool. Also for cutting and shaping eye sockets.

FEAKN



Feather Knife

Mold Cleaning Tool

For cleaning porcelain slip off molds and to help loosen the spare.

PLASTL

Greenware Duster

Soft bristles for gently cleaning inside of molds and dusting greenware and porcelain without scratching surface

ST21



Mold Cleaning Tool

Greenware Duster

CLEANING SUPPLIES

For complete instructions for cleaning ware, please order the "Pouring, Cleaning and Firing Greenware" worksheet (**GI4**). For complete eye cutting instructions, please order "The Eyes Have It" instruction worksheet (**GI5**).

TOOLS

Doll Finger Tool: for cleaning fingers and toes and making earring holes – **ST16**

Small Universal Cleaning Tool: Sharp, flat tool on one end and curved blade on other end for smoothing seamlines, trimming eye cuts and removing wax and glue. – **ST23**

Small Detail Carving Tool: Curved blade to provide very sharp cutting point. – **ST03**

Lace Tool: Sharp needle on one end and curved blade on other end. For lace draping, greenware clean-out and making stringing holes for small all-bisque dolls. – **ST04**

Double Ball Stylus: Inscribing and re-detailing ware. **ST05**

Comfy Scrub

Top-quality scrubber for Dust-Free greenware and composition cleaning. Use both sides: rough side for cleaning, smooth side for polishing. (3/package)

CMFYSCRB Comfy Scrub.

Stoneware & Porcelain Cleaning Kit

Tools for cleaning porcelain or stoneware.

Kit includes Feather Knife (**FEAKN**), Synthetic Sponge (**SPONGE5**), Comfy Scrub (**CMFYSCRB**), Grit Scrubber #220 (**DSCRUB**), Flat Synthetic Brush (**SBR24A**).

SKIT Stoneware & Porcelain Cleaning Kit

Bisque Sander

"Spot" sander for smoothing imperfections on porcelain bisque.

(3/package)

BSAND Bisque Sander.

Eye Bevelers

by Master Eye Beveler

Each beveler has a gritty polishing surface designed to make reaming and beveling eye sockets and arm holes easily. Works on wet or dry pieces. Also available with oblong and triangle shaped heads for beveling arms, leg and neck holes.

Comes in 16 sizes, measured in millimeters (4-34mm)

Round Eye Bevelers: **E4** – **E34**

EOM Oblong beveler

ETS Small Triangular Beveler

ETM Medium Triangular beveler

ETL Large Triangular Beveler

EB Eye Beveler Brush

DP Diamond Perfecter: Fine diamond tip on slender golden handle to take out imperfections, touch-up and etching.

ESET1 Complete Set: Includes 15 sizes of bevelers, from 4mm to 32mm.

Comes in handy vinyl bag.

ESET2 Starter Set: Set of 6 eye bevelers, sizes: 12-22mm. Comes in carrying case.

Mini Hole Cleaner

Cone shaped scrubber used to clean soft-fired ware. Used in arm holes, shoulder plate holes, leg holes and much more.

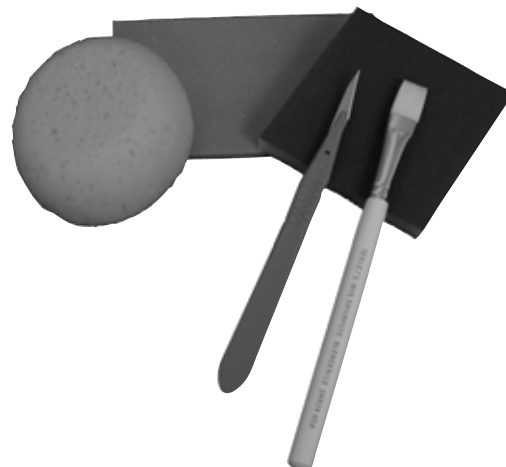
HOLE1



Tools



Comfy Scrub



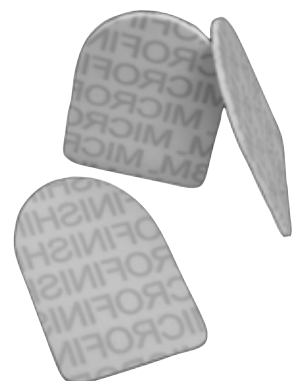
Stoneware and Porcelain Cleaning Kit



Eye Beveler

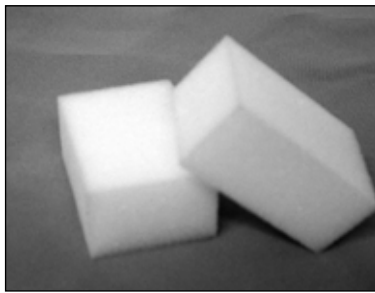


Mini Hole Cleaner



Bisque Sander

CHINA PAINTING SUPPLIES



Super Doll Sponges



Synthetic Sponges



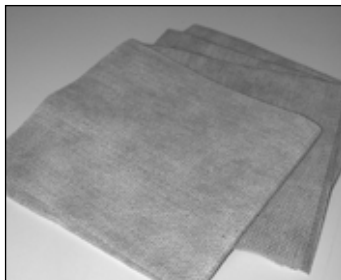
Dolly Dough



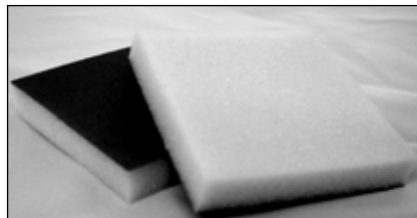
Glazed Tile



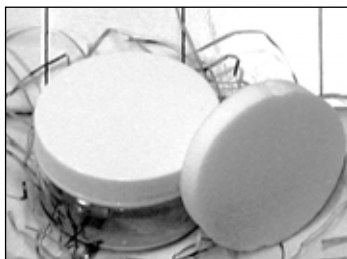
Small Pallet Knife



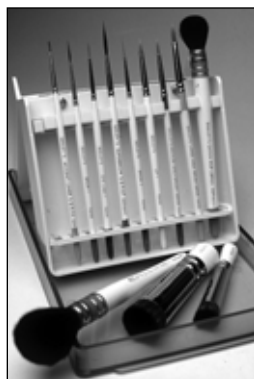
Lint Free Towel



Grit Scrubber



Blushing Jar



Brush Traveler



Doll Master Head Lupe

For Media information, please see page 50. To see china paints, please refer to centerfold in this catalog.

Super Doll Sponges

Awesome sponge that you need over and over again while china painting. You can't do without this sponge. Long lasting. Seeley's Super Doll Sponges™ are top quality, lint-free sponges for:

1. applying overall wash to bisque.
2. applying media to bisque
3. removing excess media and paint
4. applying cheek color.

SDS4 Super Doll Sponge (4/package)

Synthetic Sponge

Universal sponge used for general cleanup.

SPONGE5

Dolly Dough

Keable dough can be shaped to a fine point to wipe out even a single stroke. Also can be used as a shaping tool to achieve the finest edges on lips and brows. Re-usable.

DOUGH2 Dolly Dough, comes in small plastic box.

Glazed Tile

Six inch (15cm) smooth surface, good for mixing china paints. Easy to clean.

GT6

Small Pallet Knife

Excellent for grinding and mixing china paint and media. Also for patching greenware.

ST17

Lint Free Towel

Towel to use during china painting to keep surfaces dust free and to use with Complexion Connection tinting technique. Package of 12.

WIPER

Grit Scrubber

The most commonly used scrubber for polishing porcelain bisque. An overall sander used after bisque firing and before china painting for a smooth, sleek surface to paint on. 220 grit.

DSCRUB Grit Scrubber.

Blushing Jar

Small plastic jar with sponge for storing blushing color dry. See Complexion Connection tinting technique for how to incorporate this into your china painting.

CONTBJ Blushing Jar

Brush Traveler

The best way to keep your brushes neat, clean and organized. Great holder for everyday use or to keep your brushes separated and easy to access during classes and seminars. Hinged holder lays flat and has a snap-on plastic cover for transport and storage. 9" x 5.5" x 1" (23 x 14 x 2.5cm)

BT Brush Traveler. (Brushes not included)

Doll Master Head Lupe

Magnifying lens for close-up work, such as painting, and miniature work. Ultra light weight design, adjustable with Velcro headband, which provides comfort and a quick fit. Can be worn over glasses.

DMHLUPE

FIRING SUPPLIES

Firing Sand

Fine sand for porcelain high firing. Normally used as a fine dusting of sand on the kiln shelf, so that porcelain pieces can shrink without warping during the high-fire. Re-usable, no pre-firing required. Wt. 3 lbs. (1.35kg.)

Warning: Wear protective mask when using.

FRSAND Firing Sand, 1 quart.



Firing Sand

Kiln Gloves

Heat-resistant gloves protect your hands from burns. Safely handle hot, slippery ware. Washable. Will not stain. Pair.

KLNGLOV Kiln Gloves.



Kiln Gloves

Doll Caddy

Holds body parts, allowing kiln space to be used more efficiently. Fifteen different pieces can fit on the caddy at one time. Three points keep it from tilting.

DOLLCADDY Doll Caddy



Doll Caddy

Porcelain and Blanket Prop

A fibrous material used to support porcelain greenware (or soft-fired ware) during firing. Only use during porcelain (high) firing. Reusable. Comes as fluffy 'cotton-ball' type (PORPROP) or flat, blanket type (BLPROP). Blanket type may be cut with a scissor to fit.

BLPROP Blanket Prop, 12" x 18" (30 x 46cm) blanket

PORPROP Porcelain (fluffy) Prop, 8 oz.



Porcelain Prop

Pyrometric Cones

 By Orton

Junior cones are designed to be placed in a kiln sitter in a kiln. Junior cones control the temperature at which the kiln turns off. Witness (or self-supporting) cones are placed on shelf as a back up to understand how the kiln fired. Seeley's recommends using witness cones in all kilns, even electronic kilns to ensure a proper firing.

Cones come in 019, 018, 017, 016, 06, 05, 04, 5, 6, 7

SRB box of junior cones, 50 cones/box

SSB box of large cones, 25 cones/box

(Junior cones are the 4 small cones in the middle of the photograph, witness cones are the 5 larger cones on the outside of the photograph.)



Pyrometric Cones

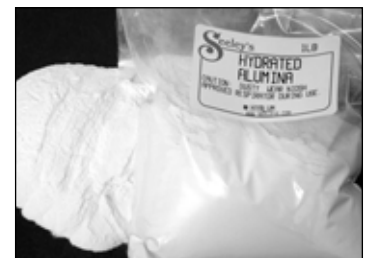
Hydrated Alumina

Fine powder-like material for porcelain firing. Normally used as a fine dusting on the kiln shelf, so that porcelain pieces can shrink without warping during the high-fire.

Use dry on shelf. May be reused. 1 or 3 lb. bag.

HYALUM1 Hydrated Alumina, 1 lb. bag

HYALUM3 Hydrated Alumina, 3 lb. bag.



Hydrated Alumina

Kiln Wash

Protective coating for kiln bottom and shelves. Mix with water and brush on.

KILN5 Kiln Wash, 1-pound bag (.45 kg.)

Firing Separator

Use on greenware or soft-fired ware. When firing a porcelain, earthenware or stoneware piece with a lid or base - you can fire them together with this firing separator coated onto the two touching pieces. This will keep the two pieces from fusing during the firing. Will also ensure that the pieces will fit together after bisque fire.

Works perfectly at any firing temperature.

Packaged in 4 oz. plastic squeeze bottle with a spout.

SESEP4 Firing Separator, 4-oz. bottle.

Also available in a case of six: **SESEPCS**



Firing Separator

ASSEMBLY SUPPLIES

Elastic

High quality elastic needed for stringing bodies. Comes in packs of 10 yards (9m)

- EL17** 1/32" (.5mm) diameter. For all-bisque dolls
- EL15** 1/16" (1.5mm) diameter. For all-bisque dolls
- EL13** 3/32" (2mm) diameter. For all-bisque dolls
- EL11** 5/32" (4mm) diameter. For small dolls 5.5" - 8.75" (14cm-22.25cm) bodies (including **FB8S, GB8.75S**)
- EL9** 3/16" (5mm) diameter. For medium dolls, 8" - 16" (20.25cm - 40.75cm) bodies (including **FLB16S, LB13S, LB15S, GB13S**)
- EL7** 7/32" (5.5mm) For large dolls, 13" - 28" (33cm - 71cm) bodies (including **GB16S, GB15S, MBI40S, MBI60S**)



Doll Stands

Sturdy steel construction, cushion-coated wire arms and durable, light-grey finish

- Item Fits doll sized
- DS3.5** 3.5" - 6" (8 - 16cm)
- DS6.5** 6.5 - 11" (16 - 28cm)
- DS8S** 8" - 14" (20 - 36cm). Slim waist
- DS12** 12" - 20" (30 - 51cm)
- DS14S** 14" - 22" (36 - 56cm). Slim waist
- DS16** 16" - 26" (40 - 63cm)
- DS16X** 16" - 26" (40 - 63cm). Extra wide waist.
- DS24** 24" - 26" (61 - 90cm)



Body Stains

Non-firing paint used to brush on composition doll bodies to complement Seeley's popular skin-tone porcelains. Apply to painted or unpainted composition bodies. Clean up with water. 4 oz (118ml) or 1-pint (450ml) jar. For pint, add "P" to item number.

- SN1** Seeley's French Bisque
- SN6** Brown Velvet
- SN9** Oriental
- SN19** French Chocolate
- SN21** American Bisque
- SN23** Aztec Tan
- SN26** Naturelle
- SN50** Red Nail stain (2.5oz/74ml)*

*not available in pint



Nichrome Wire

Wire used for neck hooks and all-bisque doll assembly. Kiln safe.

- NICH16** Nichrome wire for medium size dolls, 10 feet (3m)
- NICH24** Nichrome wire for small and all-bisque dolls, 10 feet (3m)



Stringing Clamp

Stainless steel stringing clamp. An invaluable tool for holding elastic tight and in place during body stringing. Also great for adding Deco Dipped pieces onto porcelain.

SCLAMP



Eye Wax

Temporary wax to hold eyes in place during setting. Comes in re-sealable round plastic jar.

EYEWAX



Eye Setting Tool

Great tool to hold eye during insertion into eye socket.

ST15



Rest-A-Brush

If you've ever experienced the frustration of having your brushes roll off the table while you're painting, you'll love our Rest-A-Brush. Handy size and shape keeps as many as six brushes within easy reach and bristles up. Made of non-skid rubber. A very inexpensive, must-have tool!

RAB Rest-A-Brush (*Brushes in photo not included.*)



Buckram Wig Cap Material and Instructions

Customize a buckram wig cap to fit your doll's head perfectly. Simply wet it, shape it and hand sew mohair locks to it. One package of tan buckram contains enough to make a wig cap for one large doll or 2-3 smaller dolls, depending upon the head measurements.

Illustrated step-by-step instructions on how to form wig cap included.

Material size: 18" x 16.5" (46cm x 42cm)

WCAP Buckram Wig Cap Material. (*This will replace our sized wig caps (WCAP7-16).*)



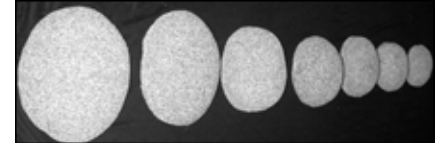
French Cork Pates

Cork pates that meet your every demand for dollmaking. Made of soft cork, making it easy to pin on the wig and to cut to size with a knife or a pair of scissors.

An additional flat piece in the size of the pate is included with each pate. Just cut this flat piece to the exact shape of the opening in the head and then glue it on to the bottom of the pate. Let it dry and voila, you now can firmly fit the pate into the head and it will not slide in any direction. It becomes optional whether or not to glue the rim of the pate to the porcelain rim on the head.

Comes in 8 different sizes:

Item #	Circumference	Length x Width
PATE1	6.625" (16.5cm)	2 x 1.75"
PATE3	8.25" (21cm)	2.5 x 2.25"
PATE4	9.25" (24cm)	3 x 2.75"
PATE5	11.25" (28.5cm)	3.75 x 3"
PATE6	12.25" (31cm)	4 x 3.25"
PATE7	13.5" (34.5cm)	4.5 x 3.75"
PATE8	15" (38cm)	5 x 4.25"
PATE9	17.5" (45cm)	5.75 x 4.75"



SOFT-FIRED BISQUE KITS

These kits will make your dollmaking easy and fun. The complete kit not only includes the soft fired porcelain pieces, but also includes all of the instructions you need to complete your doll!



Christinne complete kit: **SFBISQ370**

COMPLETE KIT INCLUDES:

1. Soft-fired ware
2. Workbook (2 pages) and color worksheet (1 page). Complete how-to instructions.
3. China paints need to paint her – one small sachet bag of each color.
4. The Eyes Have it (eye cutting step-by-step) instructions.
5. Body pattern (Susi only)
6. Dress Pattern
7. Complete accessory and supply list.

SIMPLE KIT INCLUDES:

1. Soft-fired ware
2. Workbook (2 pages) and color worksheet (1 page). Complete how-to instructions.
3. The Eyes Have it (eye cutting step-by-step) instructions.
4. Complete accessory and supply list.



Susi complete kit: **SFBISQ1052**



Christinne complete kit: **SFBISQ370**
Christinne simple kit: **SFBISQ370NOK**



Susi complete kit: **SFBISQ1052**
Susi simple kit: **SFBISQ1052NOK**

More kits to come!

INSTRUCTIONS, WORKSHEETS AND BOOKS

Casting, Cleaning and Firing Instructions

Covers casting, dust-free cleaning, and firing porcelain greenware.

Black and white. 4 pages.

GI4

Eye Cutting Techniques:



The Eyes Have It

by Sheryl Williams.

Booklet on how to cut out eyes from soft fired porcelain greenware. Illustrates three different methods and the tools you need to accomplish perfect cut out eyes. Short painting guide for Annika included.

Black and white. 8 pages.

GI5



Waterbase Technique™

This totally updated booklet includes details on china paints listed by use, medium, brushes use, and a painting guide for overall wash/tint, cheeks, contouring, eyelid blush, eyelashes, eyebrows, painting hair, lips and simple painted eyes.

Black and white. 10 pages. Great for beginners!

GI23



Dimensional Doll Painting™ Technique

Booklet with detail instructions for painting with the Dimensional Doll Painting technique.

Black and white. 4 pages.

GIMI

Painting Worksheets



For information on how to paint a specific doll, please refer to the worksheet reference in the description of the doll in the Mold section of this catalog. Worksheets illustrate the doll in color (for reproductions of antique dolls, the antique doll is shown in close-up), include a complete list of supplies needed to make the doll, give a short history (antique dolls), and include full china painting instructions. Many have detail drawings of facial details. For a free, complete index of the worksheets that are available, please inquire.



Worksheet Series 4

by Karin Buttigieg

This set of worksheets will help you to make perfect recreations of ten of the very finest French babes: E.J. Camille, Bru Shandele, RD Moline, H-Helene, C. Steiner, Schmitt Lily, F.G. Yvonne, SFBJ Twirp, SFBJ Suzanne, and B.F. Fleur. Same format as the Third Series, with updated in-depth information about Dust-Free Cleaning and the Waterbase Technique for china painting.

Illustrated with close-ups of antique dolls in color.

WRKSHT4

Worksheet Series 3

by Karin Buttigieg and Pamela Lembo

This complete package of worksheets for 10 beautiful German dolls will change your dollmaking forever. Extensive instructions take you through pouring, preparing, and firing greenware. You'll learn the nitty gritty of painting in the Waterbase Technique. Painting charts and color illustrations offer the finest antique German dolls (Little Star, Carla, Kathryn, Karin, Harriet, Miranda, Faye, Hans/Gretchen, Peter/Marie and Ruth).

WRKSHT3



Worksheet Series 5

by Doll Artisan Guild Instructors

A collection of ten favorite dolls: K*R 117n Rosalind, Hilda, all-bisque Sarah, mechanical Olympia, K&H Lorie, Baby Stuart, S&H Ingrid, Averill Baby, F.G. Claudette, Phenix Bebe. Antique dolls to paint from, complete instructions. General instructions on the Waterbase Technique have been updated.

In book form, with perforated pages for easy separation.

WRKSHT5



BOOKS

Beautiful Dolls Made Easy

by Helen Schaeffer

A must have book for any dollmaker. Complete, step-by-step techniques for making three dolls.

Featured are a sleeping baby, a beautiful modern doll with all-porcelain body and a reproduction of a popular antique German doll. You'll learn well-proven, successful techniques for porcelain slip casting, dust-free cleaning, firing, china painting in the easy Waterbase Technique and doll assembly. Also included are detailed instructions on making a mohair wig and dressing the dolls.

74 pages, color illustrations

BDME



Recreating Bisque Dolls

Beautiful new book on recreating French dolls. Porcelain dollmaking instructions, history of French dollmaking and over 60 large color photos of Mrs. Koseki's reproductions. In English and Japanese.

80 pages. This is Mrs. Koseki's fourth book. She is a D.A.G. Doctor of Dollmaking, Millie winner and a pioneer of porcelain dollmaking in Japan.

RBD



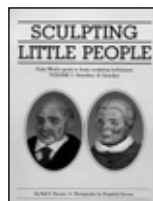
Sculpting Little People I

by Rolf Ericson

Detailed and completely illustrated step-by-step sculpting of an entire family by NIADA artist, Faith Wick. Learn to sculpt grandpa and grandpa. In addition to the sculpting, also covers china painting of the porcelain dolls.

48 pages.

SLPI



Sculpting Little People 2

by Rolf Ericson

How to sculpt a young man and woman, child and baby. Also covers mold making, doll business and doll competition. A complete guide for the original doll artist.

80 pages.

SLP2



More Business in Dolls

By Rolf Ericson

This book provides you with a step-by-step guide to running your own doll studio. Chapters focus on Business Fundamentals, Growing Your Business, Operating Your Business, and Business Climate. A must for any doll studio.

76 pages.

BIZ2



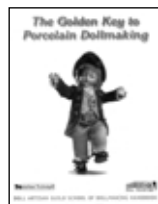
Gold Key to Porcelain Dollmaking

A condensed "bible" for the modern porcelain doll maker. Chapters on greenware preparation, including the Dust-Free cleaning method, china painting with Waterbase Technique, instructions and color suggestions for Dimensional Doll Painting (DDP), general instructions for stringing a composition body-a technical reference for the porcelain doll maker.

The handbook for the Doll Artisan School of Dollmaking.

Black and white. 16 pages.

GOLDKEY



Pattern Index

Seeley's has hundreds of patterns available for its dolls. Patterns are shown on many of the dolls throughout the catalog.

Patterns that fit on composition bodies are shown in the composition body section of this catalog (there are some that are shown with the dolls). Patterns that fit on all-bisque dolls are shown in that section, Patterns that fit China & Parian dolls are shown in that section.

If the pattern you are looking for is not listed, please check on-line or call us for information.

PART #	DESCRIPTION	PAGE #	PART #	DESCRIPTION	PAGE #	PART #	DESCRIPTION	PAGE #
BCP02	Dress & Body (S214)	18	CP934	Sweet William Costume (S461)	23	CP6051	Romper Suit (BB12.5)	41
BCP12	Lady Marta Body, Jacket, Skirt, Hat, Slip, Underwear (S072)	14	CP938	Honeysuckle Dress, Bloomers, Hat, 5" dolls	22	CP6500	Drop Waist Dress (FB17S)	15
BCP20	My little Princess Body, Dress, Bonnet, Diaper	32	CP942	Sarah Crocheted Dress	23	CP6501	Underwear (FB17S)	34
CP103	Boy Suit (BB14)	41	CP943	Iris Dress (S465)	21	CP8001	French Sailor Dress & Underwear (FB19)	35
CP104	Hilda Dress, Bonnet (BB14)	41	CP944	Edelweiss Dress	23	CP9003	Annette's Dress (GB650)	11
CP105	Smocked Dress (BB14)	41	CP945	Belladonna Costume (S473)	20	CP9004	Boy's Colonial Costume (GB650)	10
CP106	Traditional German Outfit	12	CP946	Faberge Dress (S474ST)	20	CP9005	Annette's Coat and accessories (GB650)	10
CP210	Elise Folk Outfit (GB7)	36	CP947	Periwinkle Wardrobe (S475ST)	20	CP9006	Annette's Dress and underwear (GB650)	10
CP211	Peter/Marie Bavarian (GB7)	36	CP948	Petite French Frock, underwear, shoes (FB550)	9	CP9007	Suit & Vest (GB650)	36
CP302	Dear Googly Dress (GB8)	12	CP949	Pintucked Dress, underwear (S453ST, S468ST, S477ST)	22	DCP08	Farmer's Family pattern	25
CP303	Dear Googly Boy's Suit (GB8)	36	CP950	Gem Boy's suit & girl's dress	21	DPI1000	Dress (GB18)	38
CP313	Boy Suit, Old Hat (SFBJ9)	44	CP951	Snowdrop dress, bonnet, etc	23	DPI1001	Dress (GB21)	39
CP314	Faye School Dress, (SFBJ10)	44	CP1001	Dress, Slip, Drawers (LB15)	39	DPI1002	Dress (GB18)	38
CP316	Whistler (GB8, SFBJ10)	36	CP1003	Stobe Costume (FLB16)	40	DPI1003	Marguerite Outfit (FB19, GB18)	35
CP320	Sailor Outfit (TB10.5)	44	CP1004	Fashion Costume (LB13)	15	DPI1004	Kathryn Outfit (GB18)	38
CP321	Dress & Outfit (SFBJ10)	44	CP1005	Kimono Costume (LB13)	39	DPI1005	Queen Louise Dress (GB18.5)	38
CP322	Bruder Argerlich's Sailor Suit, underwear, hat	12	CP1006	Chinese Costume (LB13)	39	DPI1006	Sailor Costume (GB13)	37
CP323	Bleuette Silver wardrobe	5	CP1007	Dress, underwear (LB205)	15	DPI1009	Oriental Costume (BB90)	41
CP324	Bleuette Jumeau Dress	5	CP1008	Blouse for Surprise Body	40	DPI1010	Dress (GB13)	37
CP325	Bleuette Gold dress and smock	5	CP1009	Sweetheart Dress (LB190)	15	DPI1011	Baby Dress (BB7.5)	40
CP401	Lyric Outfit (FB12)	33	CP1104	Milette Dress, Slip, Drawers (FB8)	8	DPI1013	Costume (FB21.5, GB21)	35
CP402	Bru Coat Dress (FB12)	33	CP1201	Dress (TB16.5S)	44	INTREPIDPTN		
CP403	Stobe French Dress (FB12)	33	CP1202	Petite Wardrobe (FB550S)	9		Genevieve Costume (FWB14)	36
CP407	Dress, Underwear, Hat (FB10, FB12)	33	CP1301	Elise Folk Outfit (ALB9201)	49	LI1611	Milette Frock (FB8)	8
CP408	Bru Dress & Slip (FB12)	33	CP1401	German Girl Outfit (GB16)	38	LI1612	Frock & Petticoat (FB10)	33
CP409	Bretelle Dress (FB12)	33	CP1402	Dress, underwear (GB16)	38	LI1615	Frock & Petticoat (FB12, FB12J)	33
CP410	Dress & Underwear (FB12)	33	CP1501	German Dress (GB23.5)	39	LI2012	Baby's Dress & Petticoat (BB11.5)	41
CP450	Bretelle Dress (FB10)	33	CP1502	Drop Waist Dress (GB23.5)	39	LI2522	Cut-Away Jacket, Dress (FB19)	35
CP451	Pauline's Dress & Underwear (FB10)	33	CP1550	Dress (GB280, S331)	39	LI2614	Buster Brown (GB10)	36
CP452	Nina's Dress & Bonnet (S320, FB10)	33	CP1601	French Dress (FB24)	35	LI2617	Buster Brown Suit (GB15)	38
CP501	Dress & Slip (FB14)	34	CP1650	Queen Elizabeth Costume (FB230)	35	LI2623	Buster Brown Suit (GB18.5)	38
CP503	French Dress W/Tucks (FB14)	34	CP1701	Dress, Underwear Apron (GB8.75)	36	LI2824	Coat/Cape (GB18, GB18.5)	38
CP505	Dress, Petticoat (FB14)	34	CP1702	Dress, Underwear (GB8.75)	36	LI2827	Coat/Cape (GB21)	39
CP506	Bretelle Dress (FB14)	34	CP1801	Die Schwester Sailor dress, underwear, hat (GB105)	12	LI2924	Frock, Blouse (GB18, GB18.5)	38
CP507	Fr. Dress Drop Waist (FB14)	34	CP1901	Norwegian Costume (GB11)	12	LI2927	Frock, Blouse (GB21)	39
CP508	Bebe Charmant Costume (FB14)	7	CP1903	Dress, slip, drawers (GB11S)	37	LI3116	Gibson Girl Bride for 16" doll	15
CP592	Johnny-Jump-Up Shirt, knickers, underwear	21	CP2000	Charmer Sailor Costume (BB90/GB110)	12	LI3118	Gibson Girl Bride for 18" doll (same style as LI3116)	15
CP602	French Dress & Hat (FB16)	34	CP2001	French Dress, Underwear (FB21.5)	35	LI3218	Boy Russian & Sailor Suit 18-20" (GB16)	38
CP603	French Dress, Costume (FB16)	34	CP2002	Claudette Dress, Slip, Hat (FB21.5S)	35	LI3222	Russian/Sailor suit (FB19)	35
CP604	Boys Suit (FB16)	34	CP2003	Jean Claude Outfit (FB21.5)	35	LI3405	Baby Layette, 5" doll (see LI3408)	40
CP606	Costume For Pan (FB16J)	34	CP2004	Arielle Dress (FB21.5/MB21.5)	35	LI3408	Baby Layette, 8-10" doll (BB6.5S)	40
CP607	Dress, Slip FB16 (S333)	34	CP2005	Solange Dress and underwear	2	LI3720	Worth Costume 20" (FLB16)	40
CP702	Pants & Blouse (M15, GB15)	38	CP2006	Christinne Long Waisted Dress (FB21.5S)	3	LI3909	Romper 9-11" Dolls (TB6.5)	36
CP703	Dress, Slip, Panties (M15)	38	CP2301	Dress (MB140, ALB9873)	42	LI3912	Romper 12-14" Dolls	36
CP704	Dress, Underwear (GB15)	38	CP2302	Winter Suit (MB140, ALB9873)	42	LI4116	Lanvin Dress (FB14)	34
CP705	Sailor Costume (GB15)	38	CP2400	Lauren's dress (MB160)	42	LI4119	Lanvin Dress (FB16)	34
CP706	A. Marque Suit (M15)	6	CP2500	Dress, Underwear (S829, ALB9008)	42	LI4122	Lanvin Dress (FB19, GB18)	35
CP707	A. Marque Dress (M15)	6	CP2601	Sapphire Costume (M5001)	42	LI4526	Princess Dress (FB18)	35
CP804	Dress, Hat & Slip (GB18)	38	CP3000	Dress, Underwear (GB12)	37	LI4528	Princess Dress (FB21.5)	35
CP851	Dress (GB18, GB18.5)	38	CP3001	Long Christening Gown (BB15)	41	LI4710	Milette Wardrobe 10" (FB7)	8
CP908	Smocked Dress, Drawers, 6.5" dolls	22	CP4004	Regional Costume (GB13)	37	LI4912	Baby Dress, Petticoat, (BB90)	41
CP914	Little Beth's Dress	21	CP4005	Dress/Underwear (GB13)	37	LI5212	Christening Gown (BB11.5)	41
CP919	Dress/Underwear (S453ST/S478ST)	21	CP4006	Dress/Underwear (GB13)	37	LI5213	Christening Gown (BB12.5)	41
CP920	Robie Christening Gown, 7" doll	21	CP4007	Inge Dress & Underwear (GB130)	37	LI5216	Christening Gown (BB14)	41
CP921	Fairy Costume	31	CP4008	Johann & Hans Outfit (GB13)	37	LI5320	Dress With Variations (FB16J)	34
CP925	Bluebell Dress, for 6-7.5" dolls	20	CP5001	Short Baby Dress (BB17S)	42	LI5322	Dress With Variation (FB17)	34
CP926	Bluebell Fitted Dress, for 6-7.5" dolls	20	CP5002	Jutta Outfit (BB17)	42	LI5323	Dress With Variation (FB18)	35
CP928	Eve's Wedding Gown	30	CP5050	Baby Dress, Underwear (BB8.5)	41	LI5413	Boys Wardrobe (SFBJ10)	44
CP931	Angel Dress & Underwear (MB140)	30	CP6002	Romper Suit (BB11.5)	41	LI5414	14" Boys Wardrobe	37
CP932	Primrose wardrobe	20	CP6003	Oriental Baby Pajamas (BB11.5)	19	LI5416	16" Boys Wardrobe	37
CP933	Jumeau Outfit (S425ST), 5.5" dolls	22				LI5815	1890's Dress (FB12)	33

Pattern Index cont

PART #	DESCRIPTION	PAGE #	PART #	DESCRIPTION	PAGE #	PART #	DESCRIPTION	PAGE #
LI5817	1890's Dress (FB14)	34	MP25	Lingerie for 16" Fashion	14	P018	Giselle Dress & Body Suit	27
LI5819	1890's Dress (FB16)	34	MP26	Fashion Dress (use with BP50 body)	14	P021	Jogging Suit (ModBod14)	43
LI5921	21" Heirloom Party Dress (GB16)	38	MP33	Smiling Bru Gown and Underwear	14	P022	Girl Suit, Vest, Pants (ModBod14)	43
LI5923	23" Heirloom Party Dress	38	MP34	Underwear (FB14S)	34	P023	Shirt, Vest, Pants (ModBod14)	43
LI5927	27" Heirloom Party Dress	39	MP40	Hanna Dress & Underwear	29	P026	Himself Suit	29
LI6117	Girl's Sunday Frock (GB13)	37	MP45	Nina's Travel Costume (S320)	13	P028	Kerstin Dress	29
LI6118	Girl's Sunday Frock (GB15)	38	MP46	Estella Evening Gown	28	P029	Capri Costume (M1021)	42
LI6121	Girl's Sunday Frock (GB16)	38	MP47	Cherry Ripe Costume	28	P030	Kerstina Dress	29
LS16	Boots (FB16J, FB17, FB18)	34	MP54	Oliver's Costume	28	P031	Li'l Kerstina Dress	29
LS5	Leggings - 3 sizes	38	MP55	Zelma's Dress (M1001)	27	P032	Harte Suit, Cloak, Underwear	28
LU188022	Underwear 22-24" (FB19S)	35	MP57	Small Parian Gown	17	P033	Dress, Chemise, Panties (OZ002)	31
LU190116	Gibson Girl Lingerie for 16" doll	15	MP58	Small Parian Gown	16	P034	Molly Storybook Outfit	30
LU190118	Gibson Girl Lingerie for 18" doll (same style as LU190116)	15	MP63	Lady Stanhope Dress (S629)	14	P035	Goldy Dress & Underwear (ModBod14)	43
LU190516	Underwear (GB13S)	37	MP65	Eleanor's Costume	28	P036	Eve Party Dress	30
LU190518	Underwear (GB15S)	37	MP67	Nymphenburg Lady Dress	16	P037	My Princess Boy/Girl Outfit	32
LU190521	Underwear (GB16S)	38	MP201	Lambert Costume (FMB14)	10	P038	Eve Peasant Dress928	30
LU190524	Underwear (GB18S)	38	MP203	Nutcracker Costume (FMB14)	10	P039	Nick Boy/Girl Outfit	30
LU190527	Underwear (GB18.5S)	38	MP204	Alice Costume (S633)	16	P043	Little Hanna Jumper suit/sandals	29
LU192013	Boys Union Suit 13-15"	37	MP205	Gibson Girl Dress, underwear (BP96)	16	P044	Rachel dress & underwear	27
LU192019	Boys Union Suit 19-21" (GB15)	38	MP207	Marika Dress, Boy's suit, Underwear	13	P045	Roslyn dress	27
LU192023	Boys Union Suit, 23-25" doll (see LU192013)	37	MP209	Pincushion for half dolls	24	P046	Ellarose dress, vest, underwear, boots	26
MP15	Parian Costume (S612, S615)	17	P001	Poppet Wardrobe	31	P047	Ellarose Indonesian Costume	26
MP16	Parian Costume (S610, S611, S613)	17	P002	Poppet Knitted Outfit	31	P048	Sun-Yi Japanese Kimono	26
MP17	Parian Gown and Underwear (S615)	16	P003	Poppet Knitted Sleeve Outfit	31	P049	Sun-Yi Chinese dress, underwear	26
MP18	Baby Dress (S209)	18	P004	Nick Playsuit, Shirt, Hat	30	P050	Little Greta costume: 2 Girl's costumes, one boy's costume, underwear, hat	26
MP24	My Princess Pram suit	32	P007	Annika Dress	30	P051	Susi Dress and underwear	26
MP25	Lingerie for 16" Fashion	14	P009	Vito-Organ Grinder Costume	29			
MP26	Fashion Dress (use with BP50 body)	14	P013	Dress & Underwear (ModBod14)	43			
			P017	Country Dress & Vest (ModBod14)	43			

China Paint Index by Application

LIPS

49G & 91S	Yellow Red
52G	Rose Red
73G	Whispering Rose
98G	Melonberry Kiss
100G	Miraja Kiss
119G	Mulberry Kiss
129S	Pompadour Red
138S	Antique Ruby
141G	New Rose Red
156S	Petal Pink (for babies)
157S	Dark Cherry (accent color, use with Petal Pink)

CHEEKS

25G	Cheek Blush
26G	Ruby Cheek Blush
70G	Sangria Blush
102G	Miraja Cheek
143G	Rosy Red Cheek Blush

OVERALL WASH

19G	Bisq-Tone #1 Creamy Rose
20G	Bisq-Tone #2 Raspberry
21G	Bisq-Tone #3 Apple Blossom
24G	Bisq-Tone #6 Peachberry
72G	Bisq-Tone #7 Peaches 'N Cream
77G	Rosewater
97G	Body Glow (for French Bisque)
99G	Miraja Glow (for India Gold)
103G	Malibu Glow (for California Sunrise)
106G	Lotus Blossom Glow (for Lotus Blossom)
107G	Cappuccino Glow (for French Chocolate)
114G	Naturelle Glow (for Naturelle)
117G	Aztec Glow (for Aztec Tan)
120G	Brown Velvet Glow (Brown Velvet)
121G	Bisq-Tone #9 Cranberry
131G	Angel Glow (for Pale Rose)

132G	Bisq-Tone #1000 Classic French
133G	Bisq-Tone #2000 Classic German
136G	Bisq-Tone #8000 Opulent Brown
139G	Bisq-Tone #4000 Honey (for ethnic dolls)
140G	Georgia Peach Glow (for Georgia Peach)

NAILS

109G	French Manicure Pink
110G	Manicure White

CONTOUR/SHADING

65M	Dusky Lilac
84G	Pink Fawn Shadow
118G	French Chocolate Shade
87G	Lavender Mist
146G	Shading Gray
160S	Apricot Shimmer (for Aztec Tan and Naturelle)
161G	Sheer Cinnamon (for darker porcelain colors)

BLUE EYES

4G	Celeste Blue
7G	Teal Blue
8G	Slate Blue
74G	Sapphire Blue
75G	Indigo
83G	Deep Purple
87G	Lavender Mist
128S	Adriatic Blue
145G	Midnight Blue

GREEN EYES

79G	Shimmering Moss
39G	Dark Avocado
42G	Shading Green

EYEBROWS & HAIR & BROWN EYES

12G	Russet
14G	Mahogany
16G	Rich Henna Brown
17G	Chestnut
18G	Smoky Topaz
62G	New French Gold
86S	EyeBrow #2 Olive Brown
93G	EyeBrow #7
94S	EyeBrow #3 Copper
95S	EyeBrow #1 Caramel
96S	EyeBrow #4 Dark Brown
127S	EyeBrow #8 Antique Mocha
130S	EyeBrow #9 Golden Brown
137S	EyeBrow #10 Finishing Brown
144G	Golden Blonde

EYELASHES

69S	Satin Black
155G	Eyelash Brown

ROCHARD

111G	Rochard Paste
------	---------------

BLACK

2G	Onyx Black
69S	Satin Black

Mold Index by Doll Name

ITEM #	NAME	PAGE	ITEM #	NAME	PAGE	ITEM #	NAME	PAGE	ITEM #	NAME	PAGE
S169	A Marque I	6	S854	Cherry Ripe	28	M4004	Harte	28	S187	Long Face IIB (Jumeau)	4
S152	A Marque III (Milette)	8	S662M	Christina Mechanical (H. Alexandre)*	10	S558	Helen DHD	25	S011H	Lorie (K & H)*	13
S372	A. Marque Ia	6	S370	Christinne (Jumeau)	3	S171	Helène (AM Haloiseau)	6	S346	Lotti (H & S)*	19
OZ002	Alan/Alanna	31	S126	Circle Dot		S173	Helène II (AM Haloiseau)	6	OED3081	Lydia	24
S626	Alexandra	17	S126	Colombine (Bru)*	2	S174	Helène III (AM Haloiseau)	6	S123	Lyric (Jumeau)	3
M1003	Alexis*	32	S018	Claudette (F.G.)	7	S049	Henri (Heubach)*	13	S198	Lyric Milette (Jumeau)	8
S633	Alice	16	M7002ST	Coco (Monkey)	29	S466ST	Hey, You! (Heubach)*	23	S663M	Margareta Mech. (AM Haloiseau)*	10
S522	All-Bisque Baby DHD	25	M1015	Connie Streetkid*	32	S020H	Hilda (Kestner)	18	S508	Marie DHD (K*R)*	25
S329	Amanda (Kestner)	10	S447	Cupid*	23	S234	Hilda II (Kestner)	18	S628	Marie Louise*	17
S321	Ana (Kestner)	12	OZ007	Daisy Elmira (Kestner)	13	S237	Hilda III (Kestner)	18	OED3005	Marika (Kestner)	13
S873	Angel	30	M4001ST	Daisy Garland*	32	S238	Hilda IV (Kestner)	18	S241	Marilyn (Kestner)	19
M1005	Angelica*	32	S153	Danielle-Paris Bébé (Danel & Cie)*	7	OZ001	Himself	29	S326	Marilyn II (Kestner)	19
S220	Angelica Bru Têteur*	2	S154	Danielle II-Paris Bebe (Danel & Cie)*	7	S462ST	Honeysuckle	22	S449	Marnie	22
S323	Anita (Kestner)	12	M2003	Danru	32	S338	Inge (Kestner)*	13	S168R	Max (K*R)*	13
S611	Ann Rost	17	S001H	Dear Googly (Kestner)	12	S158	Ingrid (S & H)*	13	S328	Meg (Kestner)	10
S551	Anna DHD	25	S612	Deborah	17	S465ST	Iris (Kestner)	21	M1020	Meilf*	32
S636	Annabell	16	S093	Désirée (A.T.)*	5	S828	Jasmine II*	32	S141	Mein Liebling (K*R)	11
M1001	Annika	30	S671M	Desiree (Jumeau Mechanical)	10	S017	Jean Claude (F.G.)*	7	S144	Mein Liebling II (K*R)	11
M1007	Annikita	30	S341	Die Schwester (Heubach)	12	OZ001	Jeannie/Alan	31	S151	Mein Liebling III (K*R)	11
S632	Antonia*	17	S361	Die Schwester II (Heubach)	12	S610	Jenny Lind	17	S252	Mein Liebling IV (K*R)	11
S075	Arielle (Jumeau)	3	S620	Diedra	17	S550	Jo DHD*	25	S199	Mein Neuer Liebling Rose (K*R)*	13
S078	Arielle II (Jumeau)	3	S092	Dollin (Jumeau, Milette)	8	S327	Joe/Josephine (Kestner)	10	S122	Melinda (Bru)*	2
S080	Arielle III (Jumeau)	3	OED3046	Dream Baby (A.M.)	19	S155	Johann (Heubach)	11	S031H	Merilie (A.T.)	4
S095	Arielle IV (Jumeau, Milette)	8	S175	E.J. Fashion (Jumeau)	14	S480ST	Johnny-Jump-Up	21	S136	Miss Chi (B. Schmidt)*	15
S042	Arthur (Heubach)	11	S469ST	Edelbud (Heubach)	23	S333	Joy (S.F.B.J.)*	6	S135	Mlle. Dee	15
M1041	Aruna (Nissen)	26	S468ST	Edelweiss (Heubach)	23	S334	Joy II (S.F.B.J.)*	6	S134	Mlle. Florence (F.G.)*	15
S615	Augusta Victoria	16	S335	Eden Bébé (F & B)	7	S025H	Julie (Steiner)	4	S325ST	Mlle. Lilianne (Jumeau)	15
SC300	Axel*	32	DAG000	Eleanor	28	S408	June Coquette (Heubach)*	13	S164	Molonne (R.D.)	7
S517	Baby DHD	25	S344	Elita (Kestner)	11	S081	Kahlie (Steiner)	4	M1037	Molli (Nissen)	26
S209	Baby Gloria	18	S188	Eliza*	15	S99	Kahlie V Milette (Steiner)	8	M3002	Molly	30
S217	Baby Stuart	19	S622	Elizabeth (C.F. Cling & Co.)	16	M2001	Kata*	32	S88	Mora (R.D. Milette)	8
DAG970	Bebe Charmant	7	M1035	Ellarose (Nissen)	26	OED3013	Kathryn (S & H)*	13	OED3033	Moritz (K*R)*	13
S343	Bebe Charmant Milette	8	S453ST	Elsbeth (Heubach)	23	M1026	Kerstin	29	S556	Mutti DHD (Hertwig & Co.)	25
S339	Bébé Français (Jumeau)*	4	S418	Elva (Heubach)*	23	M1027	Kerstina	29	M1019	My Little Angelica*	32
S118	Bébé Louvre (Jumeau)	3	S247	Emerald (K*R)*	19	S404ST	Kestner Baby (Kestner)	21	S832	My Little Princesses	32
S473ST	Belladonna	20	OED3080	Emilie	24	S650	Ladies with Hats	24	S824	My Princess	32
S336	Bettina (B. Schmidt)*	13	S631	Emma's Hat Gibson	16	S651	Lady and Googly	24	S407ST	Nancy (Heubach)	21
M6001ST	Billie & Bobby Bumbles	32	S558	Ernst DHD	25	S110	Lady Jumeau	14	M2002	Nick	30
S028H	Billie (Heubach)*	13	S857	Estella	28	S026H	Lady Jumeau Stobé	14	S320	Nina (Kestner)	13
S369	Bleuette Gold (S.F.B.J.)	5	S112	Estelle (Bru)*	2	S637	Lady Lavender	16	S639	Nymphenburg Lady	16
S366	Bleuette Jumeau	5	S476ST	Ethel Rosebud	22	S137	Lady Margaret	15	S865	Odelle Fairy	31
S366	Bleuette Silver (S.F.B.J.)	5	S870	Eve	30	S072	Lady Marta (Kestner)	14	S881	Oliver*	28
S457ST	Bluebell (S & H)	20	S474ST	Fabergé	20	OED3074	Lady Olevia (S & H)	15	S557	Oma & Opa DHD	25
S256	Bonnet Baby (Rechnagel)	18	S357	Fashion Jumeau	15	S016H	Lady Pamela (Kestner)	15	S248	Opal (E. Heubach)*	19
S324	Breveté (Bru)	2	M1004	Fawn*	32	S629	Lady Stanhope	14	OED3023	Oriental (Kestner)*	19
S412	Bridget (Louis Wolf & Co.)*	23	S027H	Faye (S & H)*	13	S091	Lana (F.G., Milette)	8	S079	Oriental Baby (A.M.)	19
S661M	Brigitte (Mechanical, Jumeau)	10	S672M	FG Mechanical	10	S331	Large Susan (S & H)*	13	S182	PAN	6
S340	Bruder Argerlich (Heubach)	12	S655	Fifi and Carmen Half dolls	24	S191	Leone II Smiling Bru	14	S183	PAN II	6
S360	Bruder Argerlich II (Heubach)	12	S500	Five Figures DHD*	25	S190	Leone Smiling Bru	14	S556	Papi DHD (Hertwig & Co.)	25
S458ST	Buttercup (Kestner)*	23	S464ST	Forget-Me-Not	22	M1028	Li'l Kerstina	29	S102	Paris Lady (Kestner)*	15
S259	Bye-Lo (G. Putman)*	19	S501	Four Figures DHD*	25	S470ST	Li'l Tough*	23	S189	Pauline (Jumeau)*	4
S519	Bye-Lo DHD	25	S507	Four Figures DHD*	25	S181	Lilette (Schmitt)*	7	S475ST	Periwinkle	20
S185ST	Camille (Jumeau)	3	S251	Garnet (A.M.)*	19	S156	Lily (Schmitt)*	7	S056	Peter (K*R)*	13
S253ST	Camille II (Jumeau)	3	S416ST	Gem (Kestner)	21	S847	Lisbeth*	32	S414	Peterkins	22
M1017	Candy Streetkid*	32	S504	Gibson Girl DHD (Kestner)*	25	S074	Liselotte (Heubach)*	13	S348	Petite AT	9
M1021	Capri*	32	S186	Gibson Girl II (Kestner)*	15	M1018	Little Annika	30	S350	Petite Bru	9
S509	Carl DHD (K*R)*	25	S197	Gisela (S & H)*	13	S403ST	Little Beth (Bru)	21	S347	Petite EJ	9
S665M	Carl Gustaf (F.G.)*	10	M1014	Giselle	27	S558	Little Ella DHD	12	S356	Petite FG	9
S167	Carla (Kestner)*	13	M1009	Giselle II	27	S008H	Little Googly (Kestner)	25	S351	Petite Jumeau	9
S846	Carolyn Bebe*	32	M1031ST	Goldy*	32	M1034	Little Greta (Nissen)	26	S349	Petite Laughing Jumeau	9
S039H	Celeste (Steiner)	4	S503	Gretchen DHD (K*R)*	25	M3003	Little Hanna	29	S352	Petite Lyric	9
S345	Celine (A.T.)	5	S855	Hanna	29	M1012	Little May*	32	S354	Petite Marque	9
S246	Century Baby (Kestner)*	19	OED3025	Hans/Gretchen (Glass Eye) (K*R)*	13	DAG2001-I	Little Mika*	32	S359	Petite Oriental	9
S192ST	Chanelle (Steiner)*	4	S029H	Hans/Gretchen (K*R)	11	M1011	Little Oliver	28	S362	Petite PAN	9
S193ST	Chanelle II (Steiner)*	4	S022H	Happy (K*R)*	19	S178	Little Star (S & H)	11	S358	Petite RD	9
M1016	Charlie Streetkid*	32				S477ST	Little Sunflower (Heubach)	22	S353	Petite Screamer	9
S258	Charmier (Heubach)	12				M1013	Little Swiss Heidi Peter*	32	S355	Petite Steiner	9
S884	Cherrette	28				M1006	Little Zelma	4	S082	Phenix Bébé (H. Alexandre)*	7

Mold Index by Doll Name (cont.)

Mold Index by Manufacturer

ITEM #	NAME	PAGE
S085	Phenix Bébé III (H.Alexandre)*	7
S656	Pierrot Half Dolls	24
M3001ST	Poppets	31
S139	Portrait of Jeanne	14
S255	Pouty Twirp*	6
S460ST	Primrose (Kestner)	20
S630	Queen Louise of Prussia*	17
M1033	Rachel	27
S033H	Rentille (A.T.)	4
S194	Robert (Heubach)*	13
S435ST	Robie (Kestner)	21
S195	Rosalind (K*R)*	13
OZ003	Rosalinda	27
M1033	Roslyn	27
S257	Ruby and Jade (H & S)*	18
M5001	Sapphire*	32
S443ST	Sarah	23
S058	Shandele (Bru)	2
S059	Shandele II (Bru)	2
S065	Shandele III (Bru)	2
S094	Shandele IV (Bru, Milette)	8
S196	Shannon (S & H)*	13
S254	Shannon II (S & H)*	13
S087	Silver (A.T.) (Milette)	8
S129	Simonne (Jumeau)*	4
S124	Singing Susanna (Heubach)*	13
S627	Sisi*	17
S479ST	Snowdrop (K*R)	23
S342	Solange (Bru)	2
S330	Stephan/Stephanie (Kestner)	10
S026H	Stobé (Jumeau)	14
S478ST	Summersweet (Kestner)	20
M1038	Sun-Yi (Nissen)	26
S332	Susan (S & H)*	13
M1052	Susi (Nissen)	26
OED3066	Suzanne (S.F.B.J.)	6
S638	Sweet Clover	16
S461ST	Sweet William	23
SWEETHEARTS	Sweetheart (S & H)	15
S459ST	Sweetpea (Kestner)*	23
M1023	Swiss Heidi Peter II*	32
S864	Tanzey Fairy	31
S871	Tiny Fairies	31
S214	Tynie Babe (Horsman)	18
M4003	Vito	29
S869	Whispers	31
S010H	Whistler (Heubach)*	13
S467ST	Who, Me? (Heubach)*	23
S108	XI Girl (Kestner)	13
M1001	Zelma	27
M1025	Zelmina	27

ITEM #	NAME	PAGE
A.M.		
OED3046	Dream Baby	19
S251	Garnet*	19
S079	Oriental Baby	19
A.T.		
S345	Celine	5
S093	Désirée*	5
S031H	Merilie	4
S348	Petite AT	9
S033H	Rentille	4
S087	Silver (Milette)	8
Bleuette		
S369	Bleuette Gold	5
S366	Bleuette Jumeau	5
S365	Bleuette Silver	5
Bru		
S220	Angelica Bru Têteur*	2
S324	Breveté	2
S126	Circle Dot. Colombine*	2
S112	Estelle*	2
S191	Leone II - Smiling Bru	14
S190	Leone - Smiling Bru	14
S403ST	Little Beth	21
S122	Melinda*	2
S350	Petite Bru	9
S058	Shandele	2
S059	Shandele II	2
S065	Shandele III	2
S094	Shandele IV (Milette)	8
S342	Solange	2
F.G.		
S665M	Carl Gustaf*	10
S018	Claudette	7
S672M	FG Mechanical	10
S017	Jean Claude*	7
S091	Lana (Milette)	8
S134	Mlle. Florence*	15
S356	Petite FG	9
Heubach		
S042	Arthur	11
S217	Baby Stuart	19
S028H	Billie*	13
S340	Bruder Argerlich	12
S360	Bruder Argerlich II	12
S258	Charmer	12
S341	Die Schwester	12
S361	Die Schwester II	12
S469ST	Edelbud	23
S468ST	Edelweiss	23
S453ST	Elsbeth	23
S418	Elva*	23
S049	Henri*	13
S466ST	Hey, You! (Heubach)*	23
S155	Johann	11
S408	June Coquette*	13
S470ST	Li'l Tough*	23
S074	Liselotte*	13
S477ST	Little Sunflower	22
S407ST	Nancy	21
S194	Robert*	13
S124	Singing Susanna*	13
S010H	Whistler*	13
S467ST	Who, Me? (Heubach)*	23

ITEM #	NAME	PAGE
Jumeau		
S075	Arielle	3
S078	Arielle II	3
S080	Arielle III	3
S095	Arielle IV (Milette)	8
S339	Bébé Français*	4
S118	Bébé Louvre	3
S366	Bleuette Jumeau	5
S661M	Brigitte Mechanical	10
S185ST	Camille	3
S253ST	Camille II	3
S370	Christinne	3
S671M	Desiree Mechanical	10
S092	Dollin (Milette)	8
S175	E.J. Fashion	14
S357	Fashion Jumeau	15
S110	Lady Jumeau	14
S026H	Lady Jumeau Stobé	14
S179	Long Face	4
S180	Long Face II	4
S187	Long Face IIB	4
S123	Lyric	3
S198	Lyric (Milette)	8
S325ST	Mlle. Lilianne	15
S189	Pauline*	4
S347	Petite EJ	9
S351	Petite Jumeau	9
S349	Petite Laughing Jumeau	9
S352	Petite Lyric	9
S353	Petite Screamer	9
S139	Portrait of Jeanne	14
S129	Simonne*	4
S026H	Stobé	14
K*R		
S509	Carl DHD*	25
S247	Emerald*	19
S503	Gretchen DHD*	25
OED3025	Hans/Gretchen (Glass Eye)*	13
S029H	Hans/Gretchen	11
S022H	Happy*	19
S508	Marie DHD*	25
S168R	Max*	13
S141	Mein Liebling	11
S144	Mein Liebling II	11
S151	Mein Liebling III	11
S252	Mein Liebling IV	11
S199	Mein Neuer Liebling Rose*	13
OED3033	Moritz*	13
S056	Peter*	13
S195	Rosalind*	13
S479ST	Snowdrop	23
Kestner		
S329	Amanda	10
S321	Ana	12
S323	Anita	12
S458ST	Buttercup*	23
S167	Carla*	13
S246	Century Baby*	19
OZ007	Daisy Elmira	13
S001H	Dear Googly	12
S344	Elita	11
S416ST	Gem (Kestner)	21
S504	Gibson Girl DHD*	25
S186	Gibson Girl II*	15
S020H	Hilda	18
S234	Hilda II	18

ITEM #	NAME	PAGE
S237	Hilda III	18
S238	Hilda IV	18
S338	Inge*	13
S465ST	Iris	21
S327	Joe/Josephine	10
S404ST	Kestner Baby	21
S072	Lady Marta	14
S016H	Lady Pamela	15
S008H	Little Googly	12
OED3005	Marika	13
S241	Marilyn	19
S326	Marilyn II	19
S328	Meg	10
S320	Nina	13
OED3023	Oriental*	19
S102	Paris Lady*	15
S460ST	Primrose	20
S435ST	Robie	21
S330	Stephan/Stephanie	10
S478ST	Summersweet	20
S459ST	Sweetpea*	23
S108	XI Girl	13
S & H		
S457ST	Bluebell	20
S027H	Faye*	13
S197	Gisela*	13
S158	Ingrid*	13
OED3013	Kathryn*	13
OED3074	Lady Olevia	15
S331	Large Susan*	13
S178	Little Star	11
S196	Shannon*	13
S254	Shannon II*	13
S332	Susan*	13
SWEETHEARTS	Sweetheart	15
S.F.B.J.		
S369	Bleuette Gold	5
S365	Bleuette Silver	5
S333	Joy*	6
S334	Joy II*	6
S255	Pouty Twirp*	6
OED3066	Suzanne	6
Steiner		
S039H	Celeste	4
S192ST	Chanelle*	4
S193ST	Chanelle II*	4
S025H	Julie	4
S081	Kahlie	4
S99	Kahlie V (Milette)	8
S355	Petite Steiner	9

* = Not illustrated

Frequently Asked Technical Questions

Below please find an index of where to find "how-to" information on various porcelain dollmaking subjects. If you want to learn more than what's in print, take a dollmaking class at your local doll studio. Go to www.seeleys.com for complete studio locator. For fast track learning, sign up for a three-day Doll Artisan Guild seminar. Go to: www.DollArtisanGuild.org for more information on seminars and schedules.

Casting how-to:

Gold Key to Porcelain Dollmaking (GOLDKEY)
Pouring, Cleaning and Firing Greenware worksheet (GI4)
Making doll teeth: Teeth and Tongue worksheet (WSBDA)
Making doll teeth with mold: *Dollmaking* magazine, Apr 2002, pg. 46*

Cleaning how-to:

Dust-Free Cleaning Technique:
Pouring, Cleaning and Firing Greenware worksheet (GI4)
Gold Key to Porcelain Dollmaking (GOLDKEY)
Dollmaking magazine, Aug 2002, pg. 45*
KwikClean Brushes Workbook (DB2003-1)*
Eye cutting: The Eyes Have It Notebook (GI5)

Firing how-to:

Pouring, Cleaning and Firing Greenware worksheet (GI4)
Gold Key to Porcelain Dollmaking (GOLDKEY)
Seeley's Catalog (firing porcelain and china firing)
Bisque firing difficult pieces (DB2003-3)*

China Painting how-to:

Waterbase Technique worksheet (GI23)
Painted Eyes and Contour shading:
Dimensional Doll Painting Technique (GIM1)
Cherry Ripe worksheet (WSMD16)
"Real Life Technique" (DB2003-1)*
Complexion Connection: *Dollmaking* magazine, Aug 2001, pg 17-23 (doll: Willow)*
Painting a French Manicure (nails): *Dollmaking* magazine, Oct 2002, pg. 24*
Brush Use:
Artist Gold Brushes Step-by-step (*Dollmaking*, Apr 2001)*
Complexion Brushes Workbook (DB2003-2)*
Contour Brushes Step-by-step (*Dollmaking*, Dec 2002)*
Clean Up Brushes Workbook (DB2003-3)*
Hair Brushes Step-by-Step (*Dollmaking*, June 2002)*
Petite Brush Step-by-step (*Dollmaking*, Sept 2002)*
Ultimate Shaders Workbook (DB2004-1)*
Rochard Technique:
Doll Artisan magazine, Vol. 20 No. 1 (Jan 1997), pg. 22 (doll: Lady Stanhope)*
DollPro magazine, Apr/May/June 1998 (doll: Estella)*
DollPro magazine, Sept/Oct 1998 (doll: Daisy Garland)*
DollPro magazine Apr/May/June 1999 (dolls: Estella and Gabrielle)*
Dollmaking magazine, Dec 2000, pg 77-81 (doll: Kerstina)*
Dollmaking magazine, Aug 2002, pg 49 (doll: Pheobe)*

Assembly how-to:

How to Attach a Cork Pate: *DOLLS Beautiful* magazine (DB2004-1)*
How to set eyes: *Dollmaking* magazine, Aug 2001, pg. 54*
How to glue on eyelashes: *Dollmaking* magazine, Apr 2001, pg 22*
How to attach head to a composition body: Coming in future *DOLLS Beautiful* magazine or request from Seeley's.
How to string a composition body: Gold Key to Porcelain Dollmaking (GOLDKEY)
How to string large porcelain bodies: *Doll Artisan* magazine Vol. 18 No. 1 (1994)*
How to string all bisque dolls: *Doll Artisan* magazine Vol. 17 No. 6 page 36-37*
How to assemble a modern doll with porcelain shoulder plate, arms and legs and cloth body: *DollPro* magazine Feb/Mar 1998*

Mohair Wigmaking how-to:

Dollmaking magazine, Feb 2000 (basics)*
Dollmaking magazine, June 2001 (styling)*

Movie Eyes how-to:

Sleep-Eyes: *Doll Artisan* magazine, Vol. 23, No. 6, page 99 (Jan 2001) (doll: Lotti)*
Flirty Eyes: *Doll Artisan* magazine, Vol. 17 No. 5, page 32-35 (doll: K&R Rosalind)*
Sleep and Flirty Eyes: *Doll Artisan* Vol. 25 No. 4 (Sept 2002), pages 54-61 (doll: S & H Gisela)*

Lace Draping how-to:

Doll Artisan magazine Vol. 17 No. 4 (1994), pages 32-35*
Doll Artisan magazine Vol. 17 No. 6 (1994), pages 32-35 (porcelain flowers)*
Doll Artisan magazine Vol. 18 No. 4, pages 52-55 (Lace)*
Doll Artisan magazine Vol. 24 No. 3, pages 29-30, 46-47 (Porcelain flowers)*
DollPro magazine Jul/Aug 1998, page 24-27 (doll: Hanna)*
Dollmaking magazine June 2001, page 6-10 (doll: Rosalinda with Deco Dip)*

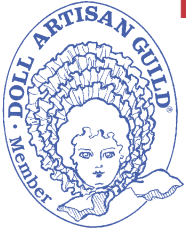
Deco Dip: Antique Shoe worksheet (WSPP1)

Sculpting how-to:

Sculpting Little People Vol. 1 (SLP)
Sculpting Little People Vol. 2 (SLP2)

Mold Making how-to: *Sculpting Little People* Vol. 2 (SLP2)

*If this magazine is out of print, feel free to request article reprint for a small fee



If you love porcelain dollmaking, believe in education, and want to get connected, JOIN THE DOLL ARTISAN GUILD TODAY.

TOP 10 REASONS TO JOIN THE D.A.G.

- 1 Informative Magazine: Porcelain dollmaking techniques, products, dolls, history, costuming and DAG news on events, competitions, seminars and more in DOLLS Beautiful magazine. (For German speaking members: Puppenmachen magazine) 4 times per year.
- 2 Education: Have fun and experience the very best instruction in a DAG seminar. There are many to choose from for modern and antique dolls, beginner to advanced dollmakers.
- 3 Discounts on dollmaking supplies from Seeley's. Many are exclusively for DAG members only.
- 4 Competition: have your dolls evaluated by expert judges. Take home beautiful ribbons and possible rosettes and Top Awards.
- 5 Events: Regional events around the globe are host to wonderful educational programs, competitions, doll shows and time to meet new dollmaking friends.
- 6 Tech help: Get dollmaking tips, advice and the most up-to-date techniques from the best.
- 7 Website with information at your fingertips.
- 8 Titles: Strive towards special titles in the DAG School of Dollmaking.
- 9 Make new friends that share your passion for dolls.
- 10 The D.A.G. is where you go for the very best dollmaking experience, education, and fun.



FOR MORE COMPLETE INFORMATION, PLEASE CONTACT THE DAG OR VISIT OUR WEBSITE AT: WWW.DOLLARTISANGUILD.ORG.

Doll Artisan Guild
P.O. Box 1113, Oneonta, NY 13820
Tel: 607-432-4977 • Fax: 607-432-2042 • Email: info@DollArtisanGuild.org • Website: www.DollArtisanGuild.org

Subscription/Membership Sign-up Form

- Yes, sign me up for 1 year subscription/membership: New Renewal
- US \$39.95 Outside US \$54.95 Australia/New Zealand A\$99.95 (subject to change check w/Dolls Den)

Please Print Complete Name and Address Below

Email _____ Phone (____) _____

If you supply us with your E-mail address, you will receive periodic messages from the DAG and Seeley's with information on membership benefits, upcoming events, new products, sales, tech help and more. DAG and Seeley's do not trade or sell E-mail addresses. If at any time you do not want to receive E-mails from DAG or Seeley's, please let us know by emailing us at dollpro@seeleys.com or removing your address via the internet.



- Check enclosed, payable to Doll Artisan Guild. Aust./NZ: Payable to: Dolls Den.
- Please charge my credit card

No. _____ Exp. Date _____

COPY & FAX or MAIL



#2 Pale Blond • #12 Ash Blond • #15 Champagne Blond • #10 Golden Blond • #11 Golden Red • #13 Honey Pecan • #14 Golden Chestnut • #7 Classic Brown • #8 Dark Brown • #9 Spanish Black • #1 White/Undyed

Luxurious Mohair Locks

The crowning glory for all of your dolls. Made of the finest, pure virgin mohair with unmistakable color and shine. Locks are sewn into strips and are ready to sew to a wig cap. Select from 11 different shades, available in either 1 yard (MOWIGETTE) or 2 yard (MOWIG) packages. To order, add the number of your color choice after the length.

Look for Doll Artisan Guild seminars on Mohair Wigmaking at a doll studio near you.

For more information call Seeley's at (800) 433-1191 or (607) 433-1240 or email: seeley@seeleys.com. Mohair also shown on the web at www.seeleys.com.