

## **First help**

How to get help in the event of a problem:

If your HD-SX6 doesn't work properly, please follow the 3 steps below:

1. First read our trouble shooting and help information's on page 26.
2. If you cannot find a solution please ask your dealer or authorised service/installation centre. All dealers and authorised service/installation centres are informed regularly of the latest help information and solutions.
3. In the event that your dealer or authorised service/installation centre cannot solve your problem please contact us directly:

### **KEY SOFT SERVICE** (Switzerland)

Postmatte 1, CH-6214 Schenkon

Tel. 0041(0)41-922 03 14

Fax 0041(0)41-922 03 15

e-mail: [info@keysoftservice.ch](mailto:info@keysoftservice.ch)

To assist us in helping you when you phone please have the following information ready:

- **Serial no. of HD-SX6 and KN6000**
- **HD/Soft Parameter**
- **Detailed problem description**

Please understand that we are only able to answer questions about the HD-SX6. Your Technics dealer will help you with all of your specific KN6000/6500 questions.

**Warranty and obligation:** KEY SOFT SERVICE offer a product warranty of 12 months. This will be handled from our domestic sales companies and can be different from country to country. Decisive are the terms and conditions of your dealer.

KEY SOFT SERVICE UND IHRE PARTNER-FIRMEN HAFTEN NICHT FÜR SCHÄDEN JEGLICHER ART, INSBESONDERE NICHT FÜR DATENVERLUST, VERMÖGENSSCHÄDEN, SACH-SCHÄDEN, ENTSTANDENE VERBIND- LICHKEITEN GEGENÜBER DRITTEN UND SCHÄDEN, DIE AUS FEHLFUNKTIONEN DES PROGRAMMS ODER AUFGRUND VON BEDIENUNGS- FEHLERN ENTSTEHEN. DIES BEINHÄLTET (IST ABER NICHT BESCHRÄNKT AUF) JEDE FORM VON UNTERBRECHUNG EINES SERVICE, GESCHÄFTSVERLUSTE, FOLGESCHÄDEN ODER ANDERE NACHTEILE, DIE AUS DER BENUTZUNG DES PROGRAMMS ENTSTEHEN. IN STAATEN, IN DENEN DIESER TOTALE GEWÄHRLEISTUNGS- UND HAFTUNGS AUSSCHLUSS NICHT ERLAUBT IST, IST DIE BENUTZUNG VON HD-SX6 NICHT ER-LAUBT.

We strongly recommend to keep your original data (software disks) on a save place and to make regular backups of your HD-SX6 data.

All printed information and drawings in this owners manual are protected.

No part of this publication may be reproduced, transmitted or stored in a retrieval system without the prior written permission of the copyright owner, KEY SOFT SERVICE CH-6214 Schenkon. KEY SOFT SERVICE makes no warranties wit respect to this documentation and reserves the right to make changes without notice.

© Copyright 1995 by KEY SOFT SERVICE. All rights reserved.

Point Style is a registered trade mark of KEY SOFT SERVICE (Switzerland).

Printed in Switzerland.

Technics is a registered trade mark of Matsushita Electric Industrial Co., Ltd. Osaka, Japan.

Microsoft and WINDOWS registered trade mark of Microsoft Corporation.

# Content

Introduction - About this manual	4
Button description and meanings	6
<b>SELECT SONG (Load a title)</b>	
SELECT BY NAME	8
LOAD BY NUMBER	10
ALPHABETIC SORTED	11
<b>SAVE SONG</b>	
Write protection	12
Directory naming	13
Save a song	14
Delete a song or a directory	14
<b>SELECT JUKE BOX</b>	
Meaning, access and edit of JUKE BOX links	15
<b>SELECT CUSTOM LOAD SCRIPT (C.L.S)</b>	
Meaning, action and selection of a C.L.S.	16
Create and edit Custom Load Script	17
<b>SETUP &amp; TOOLS</b>	
COPY FD TO HDD	20
HELP PAGES	21
PC-DATA LINK	22
Write Protect, Write Confirm, Select Partition	23
Load by number, Quick Load, Jump after Load	
Stop HD-Motor, Display Font Size, Sep. Output Load	
KN6000 AfterLoadMode, File Save Option Mode,	
Display freeze, Save Options, Format HDD	26
LYRICS OPTIONS	27
<b>OUTPUT SETTING</b>	
Separate Output Mode	28
<b>SUPPLEMENT</b>	
Tips, Tricks and suggestions	29
Manipulation and trouble shooting	31
Accessories: HD-TechManager6000	32
FD-TechBackup/LyricsEditor	32

## **Introduction - About this manual**

---

- **Overview**

HD-SX6 is a professional system extension with an advanced (min 3.2 GB) hard disk, audio and data output extension which is integrated into the main operating system of Technics KN6000/6500. HD-SX6 follows the same operation procedures as other features on the KN6000/6500.

You will very quickly be able to operate all of the functions of HD-SX6, but despite the ease of use of the HD-SX6, please don't be tempted not to read the manual! A hard disk drive is a precision piece of equipment and needs special care and attention.

❖ *Therefore, we strongly recommend that you read this manual.*

HD-SX6 uses a very safe data handling system, including head parking and motor off during play and data verifying during data write). In addition, the HD-SX6 offers highly advanced shock resistance and reliability. Nevertheless, we strongly recommend that you make monthly backup's of your valuable data. Every procedure is explained in this manual, including considerations about your own HD structure and HD handling practices.

Supplement pages 29 and 30 have further details about this.

- **This owners manual**

The HD-SX6 owner's manual is a supplement to the Technics SX-KN6000/6500 manual. You will find a menu guide for all functions similar to those in the main KN6000/6500 manual. Additionally, special comments and notes in this manual highlight important features.

**Attention:** The printed display pages in this manual may don't match the effective display of the actual software version.

- **Technical description**

All data loaded from floppy disk to the internal RAM, and all data combinations made on the KN6000/6500 can be stored on HD-SX6 hard disk drive. You can select with the File Load/Save Option which parts of a song are saved.

When you turn the power ON the new HD-SX6 start-up display, followed by the regular Technics standard display appears. HD-SX6 uses this time to check the FAT (File allocation table) and boot sector of the HDD and copy all text information (Directories/ File names and CLUs) from the selected partition to the HD-SX6 SRAM. The Technics KN6000/HD-SX6 is ready to play after the start up procedure has completed. To increase data safety every written data block is verified before the data is stored on the HDD. For copyright reasons (MS-DOS) and data read speed the HD-SX6 uses its own HDD format.

- ❖ **The HDD does not keep running during play, which means data loading takes a little longer compared to MIDI direct play. The only reason for this is safety precaution is lifetime of the hard disk drive.**

Just for your reference: A progressive 2.5" hard disk drive can handle up to 150 G shock resistance during operation but regarding vibration this parameter will be reduced drastically to a critical 1.5G.

To make the system open for updates and improvements, the HD-SX6 uses Flash ROM for the program area. The new bi-directional (PS2/ECP) parallel port and the new processor speeds up the data transfer between computer and keyboard. With the most advanced USB port HD-SX6 is ready for the new operation systems like WIN98/Win2000 already. All HD-SX6 functions are handled and controlled by the KN5000 main CPU. Of course you need the special program to access these ports. You can send all standard file format (KN2000, KN3000, KN5000, KN6000/6500 and MIDI) through these ports.

2 separate Stereo Outputs (Presets and free SEQ. part assignable) offer more flexibility for your stage setting.

All HD-SX6 operations are controlled through the KN6000/6500 display and powered by the new speedy 32-bit RISC processor. The hardware connection between the HD-SX6 and the KN6000/6500 main board is made with an industrial 56-pin micro connector. HD-SX6 is controlled and tested to reach the CE certification.

- **Specification:**

- HD-SX6 system board with 2.5" E-IDE hard disk drive mounted
- HD-SX6 owners manual, Update disk and warranty card



Congratulations on choosing the HD-SX6 as your hard disk option for the Technics KN6000/6500 and thank you very much for your valued confidence in our latest product.

HD-SX6 (HD=**H**ard **D**isk, **S**=System, **X**=eXtension, 6000= KN6000) offers a huge memory capacity, a very quick loading and all the necessary option's which will support your performance.

### **Button description of HD-SX6**

Most of the HD-SX6 operations are controlled in the same way as the KN6000/6500 features.



HD-SX6 will be controlled with the display function buttons exclusively.

### **HD-SX6 naming**

HD(D)	Hard Disk (Drive)
File	Single file
Song/Title	One or more files with same name
Directory	Folder of max. 16 Song/Title = DIR
C.L.S.	Custom Load Script, Script utility to link up to 32 song/Title.
(*)	A remark to some more information's in the appendix.

## SELECT SONG

Since the load function is the most important thing on stage, the HD-SX6 is primarily designed to offer fast HDD access and automated operation. Therefore, we start the function explanations with a simple file load.

If your HD-SX6 is empty (no data transfer from previous HDD systems) you need to save a song first. Please go to the page 14 (SAVE SONG).

### "Function" *HD-SX6 entry point*



*Because HD-SX6 uses the same page's for loading files, saving files and edit functions, we have added an dedicated HD-SX6 icon.*

- ➡ **1. Press the DISK button on the MENU group followed by the HARD DISK MAIN MENU button on the DISK MENU.**

The HD-SX6 main menu page appears.



The right side buttons have direct access to the basic load selection.

The left side functions are reserved for tools and settings in the non playing mode.

In the centre part of the display you can see the status of WRITE PROTECT, WRITE CONFIRM, SELECTED PARTITION, LOAD BY NUMBER MODE, QUICK LOAD MODE, JUMP AFTER LOAD, DISPLAY MODE and free memory capacity of HDD.

### "Function" *Selected Partition*

*One of the most important new features is the HDD division into 3 equal partitions for each 3'840 songs/titles. The main reason for that was to keep loading/file searching speed. More about that below SETUP & TOOLS on page 20 .*

## SELECT SONG by name

### ➔ 2. Press the SELECT SONG button



The DIRECTORY SELECT page will appear.

For an easier operation in the low light conditions such as on stage, the OK function is set to both top right buttons.

Use the UP/DOWN button, the LEFT/RIGHT or the Program/Tempo wheel to select the directory you wish to display. If you or your service centre made a data transfer from a previous HDD system you will find all directories in the well-known structure.

With the BigFont selected you will only see 30 directories, but 8 different pages.

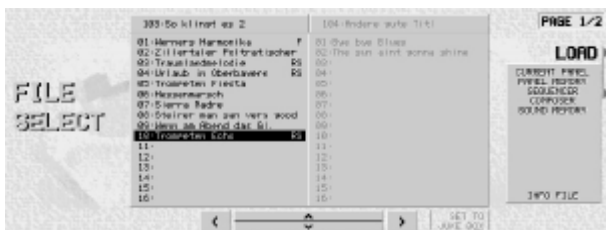
### "Function" Directory select (Directory search)

The total of 240 directories are divided into 5 pages. Using the LEFT/RIGHT button, you can change from column to column and with the page left/right from page to page.

.....

### ➔ 3. Select a directory and press OK.

The FILE SELECT page will appear.



In the left box you will see all the selectable songs/titles. The directory name is listed in the top box. The right box (grey label) is a preview of the following directory. The types of data that can be loaded from the selected file are shown in

the file info box.

If you selected **BigFont**, this page will only display 2 columns with each 8 songs.



"Function" Song/Title search

If you turn further on position 16, the following (grey labelled) directory appears and the cursor is positioned on No. 1. For a faster search method use the LEFT/RIGHT button to change to the next directory.

.....

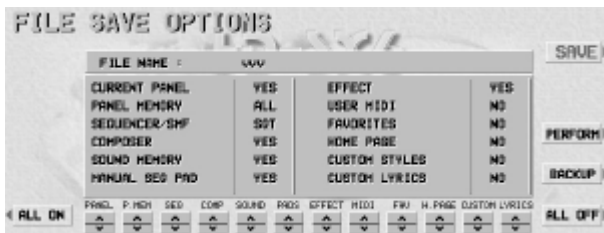


Change to the LOAD OPTION (press the page button) to load specific data only. (For example just Panel Memory, Sound Memory or any combination of the available data types). You can start the loading operation also from this page.

- ➔ **4. Select a Song/Title with the  (UP/DOWN) buttons and press LOAD.**

Now you will see the LOADING ... PLEASE WAIT message for about 2-3 seconds.

Loading time depends on the number of file's size. If you just select a small sequencer file loading will take about 2 seconds. If you load the same title as a Performance file it can take about 4-5 seconds.



If you select a \*.ast (ALL CUSTOM STYLE), the data are much bigger and they need to be stored into a Flash-ROM which can take up to 45 seconds.

- ➔ **After LOADING is completed, the keyboard is ready to be played.**

Please note, that the data's has the same condition as you loaded them from disk.

## LOAD BY NUMBER

As many musicians organise their file's based on numbers the HD-SX6 also offer this kind of file loading.

The entry point for LOAD BY NUMBER will be found below SELECT SONG/DIRECTORY SELECT.

- ➔ 1. Press **SELECT BY NUMBER** on the **SELECT DIRECTORY** page.




Load by number offer the same loading options as load by name. Note, that there is no LOAD OPTION available when you have selected the LOAD BY NUMBER MODE 2 on the SETUP & TOOLS page.

### "Function" 3 & 2 (5) digit number entry

Use the 10 marked buttons below the display and the HD-SX6 will automatically find the selected file.  
The LOAD BY NUMBER MODE 2 will automatically load the file after receiving the 5th digit. Use CLEAR if your entry was wrong.

- ➔ 2. Type a 5 digit number with the UP/DOWN buttons

With the LEFT/RIGHT buttons  you can switch to the next Title forward and back

**Important!** Only a complete 5 digit number will display a file.  
For example: 001-01, means first directory/first file. If you type an empty number, a warning message will be shown

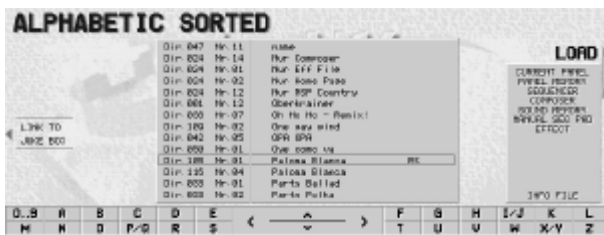
There is a info line that will show you the actual loaded song.

## ALPHABETIC SORTED

The loading from a sorted list is maybe not the most fast selection (to many buttons need to be pressed). Nevertheless this function is very helpful since you can manage such a enormous data amount.

For example: You know that you have somewhere the „Feelings“ melody stored. But in which directory? Go to the ALPHA SORTED LIST and simply press the „F“ key to get the list sorted starting from F. The system sort the list based on the first 5 characters. It need some time if you select this page after you switched ON because the Keyboard CPU has to search and sort the entire list.

1. Press the **ALPHABETIC SORTED** button on the **DIRECTORY SELECT** page



The **ALPHABETIC SORTED** page offer the same function as the **FILE SELECT** page.

Even here you will find the file detail list. Also the **PAGE 2/2** is available here.

The **LINK TO JUKE BOX** button is explained on the **JUKE BOX** (page

2. Press one of the sorting character

The entire list will be displayed, beginning on the selected character.

3. With the dial or the **UP/DOWN** buttons you can select the searched song/title

If you press an other character the list will be set new.

4. Press **LOAD** to start the loading

Even if your song/title names are centred on the file **SELECT** list the system will sort the list as well.

## SAVE SONG

Write data to a hard disk drive is much more difficult than load. Therefore we have spent some more attention to this function.

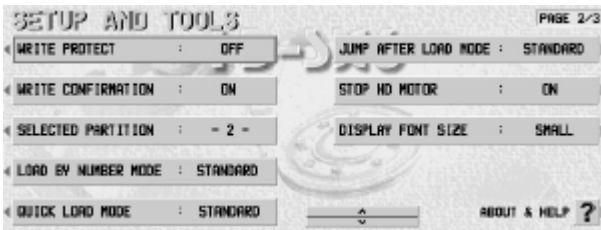
As already mentioned: The HDD is always write protected when you turn ON the keyboard!

### "Function" WRITE PROTECTION

The SAVE function on the HD-SX6 is secured of several reasons:

1. Save functions are mostly used at home. During performance on stage you normally need LOAD functions only.
2. To prevent accidental loss of data the SAVE/EDIT buttons are hidden in standard mode
3. Other people cannot delete or overwrite your data.

- 
- ➔ **1. Press the SETUP & TOOLS button on the HD-SX6 main page followed by the PAGE button**
- 



Further details you will find on the chapter SETUP & TOOLS, page 20.

- 
- ➔ **2. Change the WRITE PROTECT from ON to OFF mode**
- 

This procedure has to be done only once for each turn ON. This parameter cannot be stored in the SAVE OPTION memory.

F.

## Directory naming

It's up to your decision how to proceed the naming of directories. The most easy way is to use the optional HD-TechManager6000 (page 32).

- 
- ➔ **1. Press the SELECT SONG button on the HD-SX6 main page.**



You will find the same DIRECTORY SELECT page but there is now the EDIT button in the right bottom corner visible.

The naming page looks almost the same as the KN6000/6500 naming page.

- 
- ➔ **2. Press EDIT and you will find the NAMING page**

You can use all characters, as well as capital and small letters based on the KN6000/6500 operation.

*"Function" Long directory names*

*Taking advantage of the big screen directories can be named with a maximum of 16 characters. Additionally the LST button offers a small memory with the last naming string. Please refer also to the APPENDIX on page 26 and 27 for more information.*

.....

- 
- ➔ **3. After generating a DIRECTORY name press the OK button to save the new name in to the directory list.**

The system will change back to the DIRECTORY SELECT and you can name other directories in the same way.

## Save a song/title to HDD

Save an existing file from a floppy disk (whatever type of file) or the entire memory content to the HDD need the following procedure:

- 
- **1. Load a file/song from FD (as you know well), then press DISK, HARD DISK MAIN MENU and SELECT SONG, select a named directory and press OK.**
- 

You will find the same FILE SELECT page as for the load function but with the addition of the DEL. DIR., DEL. TITLE and SAVE TITLE button.

If you don't want to save all types of file please change to page 2/2 and mark the files.

- 
- **2. Select a free place and press SAVE. (The FILE NAMING page appear.)**
- 

Also for the songs/titles you can use long names now, up to 26 characters (based on the international character set). Even here we have a LST button where you will find the last naming string. (see also Tips & Tricks)

- 
- **3. Press the OK button to save the data to the hard disk.**
- 



Since the system verify the data before the official save will be proceed, the save operation need some more time than the loading. If you also save the CUSTOM STYLE file than the saving takes about 12 seconds more.

If you have selected a place with an already existing song a warning page appear.

## DELETE TITLE /DELETE DIRECTORY

If you want to delete a title or an entire directory just press the button on the left side up or down the display. Delete a single song/title will take about 10 seconds. An entire directory need more time, depend on the numbers of song/titles.

## SELECT JUKEBOX

What is a Jukebox? No, we don't talk about a record machine. But the system is almost the same. We are using a reserved RAM area to temporarily store songs/titles. Similar to a real music box you can preselect up to 8 links for the next dance round.

These settings will be stored only in the static RAM and there are no write/save to the HDD necessary.

How can you create and recall a Jukebox ?

1. Press **SELECT JUKE BOX** on the HD-SX6 main page. On the **JUKE BOX** page press the **SET** button



Now you will find the familiar **DIRECTORY SELECT** page.

If the **JUKE BOX SET MODE** on the **SETUP & TOOLS 3/3** is set to **ALPHA LIST** you will find the **ALPHABETIC SORTED** page to select your song/title.

Change to the corresponding **FILE SELECT** page and select a song/title.

2. On the **FILE SELECT** page press **LINK TO JUKE BOX**.

Back to the **JUKE BOX** select one of the 8 boxes. Automatically the address of the selected song/title is linked now to the **JUKE BOX** and the name was copied.

3. Repeat this procedure up to 8 times

*Important!* Of course you can select the **JUKEBOX** by using the **Quick Load** or **Tab Tempo** function.

After creating the **JUKE BOX** links you simply press the button of a marked box and the song/title will be loaded directly. More about the **JUKE BOX** on page 29.

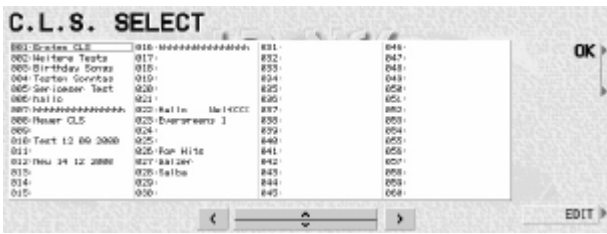
# CUSTOM LOAD SCRIPT

As the memory capacity of the hard disk drive is very big (up to 11'520 songs/titles), it can become difficult to find a specific music very quick. Also you would like to have an other order for some specific songs/titles for special events.

Therefore the HD-SX6 offers a programmable file link table with load options. We call it CUSTOM LOAD SCRIPT because you set it up like a script of file locations. Similarly to the medley play function, you can use AUTO START (AS) and AUTO LOAD (AL) to create a load/play chain.

*Important! Since your system don't have C.L.S. (expect you made a data transfer from the HD-AE5000 to HD-SX6 and already used the FLS there) already, jump to the SAVE/EDIT C.L.S. on page 17.*

## ➔ 1. Press SELECT C. L. S. on the HD-SX6 main page



This page looks and operates in almost the same way as the standard DIRECTORY SELECT page.

Even the selection of a C.L.S. Is working same.

## ➔ 2. Select a C.L.S. And press the OK button



The C.L.S. FILE LOAD page shows the name of the script in the top row as well as the location of the selected song/title. Also the long file names followed by the AS/AL status is shown in the script box.



---

➔ **3. Press the LOAD button to start the script**

---

If the first song has AS (AutoStart) indicated, the sequencer will start playing the music immediately after loading is complete.

With AL indicated, the next song will be automatically loaded after the sequencer has stopped, or if a playback is stopped by the musician. There is a 2 second delay between automatic selection and loading of the following song/title to give you a possibility to interrupt the play/load chain with the PANIC button.

*Important! On the APPENDIX (Page 29) you will find some more practical information to optimise your C.L.S. by using the AL/AS option.*

## **EDIT C.L.S. (CUSTOM LOAD SCRIPT)**

Step by step you should be able to create your own C.L.S.

Before we start you have to change the WRITE PROTECT mode to OFF. (refer page 12)

---

➔ **1. Press the SELECT C.L.S. on the HD-SX6 main page**

---

If you select this page the first time you will find them empty.

---

➔ **2. Select a free C.L.S. Place and press EDIT**

---



Write the name of the script file in the way as naming on the KN6000/6500. Up to 16 characters are allowed.

Our example is called: „Happy birthday party”

---

➔ **3. Press OK to save the C.L.S. name**

---



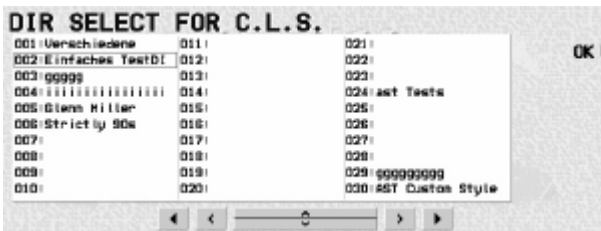
After saving your script name to the script list, the C.L.S. FILE LOAD page name will appear.

The script name will be shown on the C.L.S. title box, but the rest of the file list box will be empty.

➡ 4. Press the EDIT button.

Based on the C.L.S. EDIT page all further operations will be made on this page. But first we will search the first title for the "birthday" C.L.S.

➡ 5. To find the first song/title for the C.L.S. press SEARCH



On the different background coloured DIR SELECT FOR C.L.S. you can select the directory where your song/title is located.

➡ Press OK to get the FILE SELECT FOR C.L.S. page

Select your first song/title for the „Happy birthday party“ script.

➡ 6. Press the SELECT button to transfer the selected song/title into the C.L.S. List



On the C.L.S. EDIT page you will find the linked song/title with all information's like location (DIR/FILE) and file info's.

---

## ➤ 7. Use the AS/AL options to get an automatic load/play script

---

**AS** marked = start the sequencer after loading is completed (if there is a sequencer).

**AL** marked = load the next song/title in the script, if the sequencer has an END marking.

If you would like to use the AL function with Composer to play live (no MIDI files) you need to create an empty sequencer with a control track (CTL). In this control track set a rhythm START command at the beginning and very far on the expected end of the music a rhythm STOP event. (you have to try the end mark but about 250 bars should be OK)

Finally you can edit your C.L.S. with INSERT, ERASE and DELETE individually.

**INSERT** = Insert a song/title into the list move the following.

**ERASE** = Erase an entry and keep the place free.

**DELETE** = Delete the selected entry and move the rest.

---

## ➤ 8. Repeat this operation to complete the script

---

Please remind to set the cursor to a free place. Warning pages will inform you about overwriting existing entries. Up to 32 song/title can be linked within a single C.L.S.

---

## ➤ 9. Confirm the script editing with SAVE C.L.S.

---

The script file will be stored to the HDD. Because the script doesn't move song/title data there is no risk for fragmentation or data lost.

Since the script files are very small, they also will be copied into the SRAM during keyboard start up. Therefore all of the C.L.S. are available during play.

If you try to leave the EDIT mode without saving C.L.S. A warning page will come up.

## SETUP & TOOLS

With the extended HD-SX6 system the SETUP & TOOLS become more power and importance. Beside the already mentioned global settings (page 2/2), here you will find the functions like COPY FD TO HD, LYRIC OPTION, PC DATA LINK or the planed plug-in features.

### Page 1/3



Different to other products from us the settings were moved to the page 2/2.

A TOOLS function always refer to a next menu.

### COPY FD TO HDD

To automate LOAD/SAVE functions from floppy disk HD-SX6 offer a very helpful and convenient COPY FD TO HARD DISK option.

This HD write function is also only available when the HD write protection is turned OFF (refer to page 12).

- 1. With a floppy disk (\*) on the disk drive press the COPY FD TO HD button on the HD-SX6 main menu



The disk directory will be written and displayed.

Since there is no space limitation on the HDD we always copy all files of a song/title.

Use SMF to get the directory listed with your MIDI files.

➡ **2. Choose a song/title and press SELECT to mark it**

When you mark a song an indication is added behind the name of the selected song. Continue by selecting other songs which you want to copy. With the SELECT ALL button all song/title will be marked at once.

➡ **3. Press the COPY \* TO button**

If you press the COPY \* TO button before you have selected any files an attention message will be displayed.



On the DIRECTORY SELECT page, select a named directory as the location for your new files. Because you are in the edit mode, you can also name a directory for your files. To do this, press the EDIT button.

Note, that you can only copy files to a named and empty directory.

➡ **4. Press COPY to start the procedure**

Depending on the number of song/title you would like to copy, the entire process can take some minutes.

**HELP-PAGE**

These "Help-Pages" show you what will be possible in the future with the Help-Workshop on the plug-in area.



Use the left side to move the text per line or per page up and down.

Change the category by using the 8 different register on the bottom of the display.

In the future (V2.0) we will add more graphical (lines & pictures) and link commands as well.

## PC DATA LINK

To communicate with a PC via parallel port or USB the KN6000 has to be set on a special slave mode. HD-SX6 decide which connection is made and select automatically the data protocol. You will find all detail explanations with the HD-TechManager6000 (refer page 32) software.

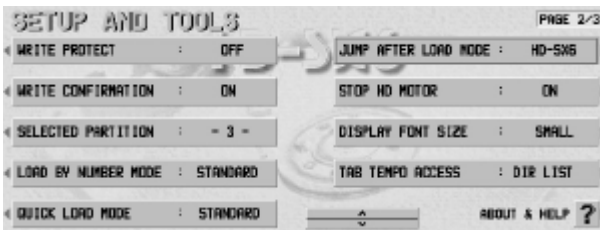
### 1. Press the PC DATA LINK button



Here you can select to start the communication test or you can leave this page by using STOP.

Use RESET to initialise the connection to the computer.

## PAGE 2/3



On the PAGE 2/3 you will find the most important parameters for your personal settings.

The operation on this page is the same as the settings on the KN6000.

### "Function" WRITE PROTECTION

As already mentioned on page 12, the installed hard disk drive is write protected always if you switch ON your KN6000.

*Important! This function cannot be stored on the SAVE SETUP memory.*

"Function" WRITE CONFIRM ON/OFF

All save functions normally need your confirmation by pressing YES or CANCEL. Experienced users may not want this confirmation procedure to appear every time, so it can be set to OFF.

"Function" SELECT PARTITION

Since one of our main target was a compatibility to the HD-MEC2000, HD-HSO3000 and HD-AE5000 and the installed HDD is gigantic, we have decided to create 3 equal partitions. Select your Partition 1, 2 or 3.

"Function" LOAD BY NUMBER MODE

STANDARD: The directory and the song/title will be displayed. The LOAD button need to be pressed to start loading.

AUTO LOAD: The song/title will be loaded after the 5. Character entered.

"Function" QUICK LOAD MODE

STANDARD: Press and hold the DISK button for 3 seconds, and the most recently selected directory page will appear.

LBN BOX: Like MODE 1 but change to the LOAD BY NUMBER page.

C.L.S.: Like MODE 1 but change to the C.L.S. page.

JUKE BOX: Like MODE 1 but change to the JUKE BOX page.

ALPHA LIST: Like MODE 1 but change to the ALPHA LIST page.

"Function" JUMP AFTER LOAD

STANDARD: This mode will set the display (after HD loading is completed) to the KN6000 play mode screen.

HD-SX6: The SX-6 mode will keep the same HD-SX6 page present.

"Function" STOP HD-MOTOR

ON: The motor of the hard disk drive will be set OFF because of security reasons after each load and save operation.

OFF: In studio or home use you can change this parameter to OFF mode and earn 1 second less loading & saving time.

"Function" DISPLAY FONT SIZE

Select your preferred display font size. Small font means 48 directories and 2 x 16 songs/titles will be displayed. Big font has only 30 directories and 2 x 8 songs/titles.

"Function" TAB TEMPO ACCESS

The TAB TEMPO ACCESS is a kind of QUICK LOAD for the HD-SX6. To avoid press and hold the DISK button and make acrobatic hand movements the TAB TEMPO button can be set as you HD-SX6 FAVORITE access button.

Select from various pages and of course OFF mode to give the TAB TEMPO button his official function.

"Function" ABOUT & HELP

On this page you will find al the important information's about your HD-SX6 system like software version, HDD parameter and others.

**PAGE 3/3**



On the WRITE PROTECT mode you don't have access to the important functions like SAVE OPTION and FORMAT HDD.

"Function" JUKE BOX SET MODE

**STANDARD** If you press the SET button on the JUKE BOX the DIRECTORY SELECT will appear.

**ALPHA LIST** With this parameter the ALPHABETIC SORTED list will appear.

"Function" SEPARATE OUTPUT LOAD

**GLOBAL:** The OUTPUT SETTINGS are stored only global for all the songs/titles.

**FILE:** All the OUTPUT SETTINGS will be stored and loaded from each song/title individually



"Function" KN6000 AfterLoadPage

HOME PAGE: After loading a song/title the home page will be displayed

SEQ PAGE: As Technics standard the sequencer page will be shown.

These settings are only effective with JumpAfterLoad Mode "STANDARD".

"Function" SAVE OPTION MODE

STANDARD: If you save a song/title to HD-SX6, there is the KN6000 standard order (PANEL/P.MEM/SEQ/COMP/SOUND/PADS/EFFECT) given.

HDD LOAD: IF you load a song with an other order than KN6000 standard, this parameter automatically set that same order also to the SAVE OPTION.

"Function" LYRICS FONT SIZE

STANDARD: Regular size of sentence, like MIDI file lyrics, close text lines

SMALL: Smaller font but more space between the lines

BIG: 4 lines only, very big letters.

"Function" SAVE OPTIONS

A small memory area store your personal settings expect WRITE PROTECT ON/OFF. The WRITE PROTECT ON/OFF setting cannot be stored.

---

➔ **Press the SAVE OPTION button and on the following page the SAVE OPTIONs again**

---

"Function" HDD FORMAT

One of the most important page is the HDD FORMAT screen.

*Important! Already the installation guide explained how important the FULL format for a proper working is! Every HD-SX6 need at least once that FULL format*



The FULL Format (Duration: about 25 min. p/partition) with fine scanning need to be made only once. QUICK Format (Duration: about 3 min. p/partition) can be used for cleaning a partition.

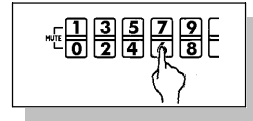
Without selection of a specific partition (1/2/3) the ALL function will be started. Only with the correct typed code the procedure will be started.

**Important! Please note, all this function delete all data irrevocable. There is no undo function. Be careful !!!**

The Format Code is = **7 3 2 9 8 1 2 5**

Type the number as same as on the LOAD BY NUMBER page.

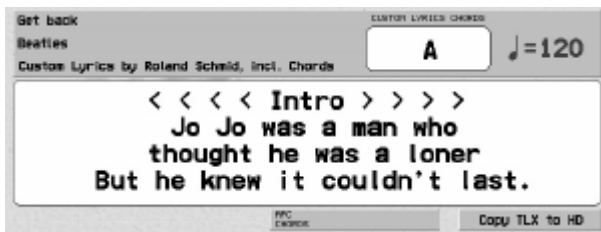
Use **RESET** if your entry was wrong.



## CUSTOM LYRICS & OPTIONS

The CUSTOM LYRICS is a specific lyrics format developed already for the HD-AE5000 and improved for the HD-SX6.

*Important! The CUSTOM LYRICS is quite different to the MIDI file lyrics! Also the KN6000/6500 cannot read/load that file. Only if the file is copied to the HD-SX6 you can benefit from the advantages of the CUSTOM LYRICS.*



If there is a CUSTOM LYRICS (\*.TLX) stored with a song and loaded, the display will automatically show the lyrics.

In addition to the advanced lyrics there is also a chord and info available from the \*.TLX file.

On the SETUP & TOOLS 3/3 you will find the LYRICS FONT SIZE parameter.

➔ **Press that button to select one of the 3 different sizes.**

The **APC CHORD** is the same chord information as you have on the sequencer page. Please note that this chord is always in time. That means if you check/watch that info for your playback, you will be late most the time.

Therefore we have added the CUSTOM LYRICS chord info. With the LyricsEditor or other software programs you can move the chord info a little bit forward for a better replay.

With the button **COPY TLX to HDD** you will be led to the COPY FD TO HDD page.

If you leaf the CUSTOM LYRICS page you will find it again by pressing the CUSTOM LYRICS button on the HD-SX6 main page.

More detail you will find on the Appendix.

# OUTPUT SETTINGS

A more important point on the new system extension is the separate output section.

Because the dimension of the output section could not be enlarged in its size the audio signal lines need to be located on the D-Sub 26, parallel port connector. With the special audio cable AC25 (D-Sub26 - 4 jack connector) you can connect the KN6000 with your mixing desk.



Basically the 4 separate audio outputs are 2 selectable stereo lines direct from the tone generator.

If you have no connection to a mixing desk, make sure that the APC and PART SELECT are on OFF mode.

Basically there are two groups of outputs: APC and sequencer

If your song is using APC and sequencer, APC has priority. If it is a MIDI file, the sequencer part has priority.

**SEPARATE OUTPUT MODE:** Select from 4 different output presets for the APC section.

**PART SELECT FOR SEQ.:** You can select 4 individual part for the sequencer.

**EXPRESSION PEDAL CONTROL:** Select whether the expression pedal should control the 2 stereo outputs.

**AUX RETURN:** Without this function the selected parts are no more sounding on the internal speakers. So you can bring back the sound of these parts.

# APPENDIX

## Tips, Tricks and suggestions

### ❖ DIRECTORY NAMING

Because of compatibility reasons (HD-MEC2000/HD-HSO3000/HD-AE5000) the HD-SX6 use the international character set and don't support umlaut and other special characters.

We recommend naming all directories with capital letters to distinguish them easily from file lists.

### ❖ LST (Last NAMING String)

If you have entered a new directory name or song/title it is very helpful that this name is stored on a small memory.

For example: You would like to name directories as Evergreen 1, Evergreen 2 and 3. With the LST button you only need to write the name EVERGREEN once and than press LST button on the naming page and only add the number 2 or 3.

### ❖ LOAD BY NUMBER

If your repertoire is numbered for example from 1 to maybe 3'840 we recommend to renumbering the songs like this:

001-010	Dir 1/Files 1-10	11 to 16 are reserved for news/olds
011-020	Dir 2/Files 1-10	11 to 16 are reserved for news/olds
021-030	Dir 3/Files 1-10	11 to 16 are reserved for news/olds
.....		
181-190	Dir 19/Files 1-10	11 to 16 are reserved for news/olds
651-660	Dir 66/Files 1-10	11 to 16 are reserved for news/olds
.....		

If you type instead of the correct number 008-11 an empty or wrong number you can search trough the list by using the   buttons.

## ❖ **JUKE BOX**

What is the difference between the JUKE BOX and a C.L.S. (Custom Load Script), or why the JUKE BOX has no save function?

1. The JUKEBOX should be an easy function to preselect songs/titles created within just one or two minutes means within a dancing break. If you have to store such a selection (Write protect OFF, naming, save) than you need more time and you are not quick enough for such an event.

2. The C.L.S. basically are the well prepared „BIG JUKE BOX’S“. Extended with the AUTOLOAD and AUTOSTART the C.L.S. serve the purpose for highest requirements in automated performance.

Therefore HD-SX6 offer now 2 different functions for different fields of application.

How delete/erase a JUKE BOX?

Nothing easier than that! Just press the CLEAR ALL button and the JUKE BOX is ready for new selection. This procedure can be repeated unreserved.

## ❖ **CUSTOM LOAD SCRIPT**

Please use the C.L.S. Option AS/AL (Auto Start/Auto Load) carefully and keep in mind that the AS (Auto Start) function need your special attention on stage.

Also please pay attention that a C.L.S. with AL and AS linked files need to be cancelled with the PANIC button. If you don't stop such a chain with the PANIC button the START/STOP button will always change to the C.L.S. And try to load the next song/title.

## ❖ **COPY TO HDD**

If you would like to copy songs/titles into a directory where already songs/titles are located, the new songs/titles will be placed on the end of the list.

If there is not enough space on the selected directory, only the number of free places will be copied.

## ❖ **Separate outputs**

Right now there is no cable available for parallel port and separate audio output as a unit. If you need to have simultaneous access for both data types (HDD and audio output) you should use the AC25/4 and the USB cable.

We are working on special help and information pages also for our Internet home page ([www.keysoftservice.ch](http://www.keysoftservice.ch)).

## Trouble shouting

One of the most important benefits of the HD-SX6 is data security. The hardware as well as the software is based on this objective.

*Important! How to handle KN6000 with built-in HD-SX6*

Even modern HDD has improved reliability very much, please be aware, that even such a hard disk drive is a mechanical unit and needs care during transportation and operation.

As previously mentioned, the Hard Drive is not accessed during play and the motor is always off during play mode. Additionally the heads are parked after every operation. Please also be aware of dramatic changes in temperature when you transport the KN6000 with the Hard Disk extension. The HDD can handle temperature variations from  $-40^{\circ}$  to  $60^{\circ}$  C in the Non-Operation mode, but when you bring your keyboard from a cold place to a warm place, give the HDD a time of at least 60 min. to warm up to the room's temperature.

### **Don't turn ON the keyboard in this time!**

Another very important point is the shock resistance. The HDD can handle a direct shock of 100G (Operating) and 500G (Nonoperating). More importantly, be careful of excessive vibration. The limits are 1 G (Operating) and 5 G (Nonoperating). Weak/shaky keyboard stands can be the death of a hard disk drive!

Therefore, we recommend strongly, to handle the KN6000 with HD-SX6 with all necessary care.

## Accessories:

# HD-TechManager 6000

For security reasons we strongly recommend that you save your valuable data on the HD-SX6 HDD to a backup media. The HD-TechManager6000 offer all necessary functions for a comfortable work with your HD-SX6 data and your computer.

The following elements built the frame of the HD-TechManager6000:

- **Backup and Restore**

Selection between the full or the archive backup and restore.

- **HD managing tools**

Convenient edit functions like directory and file move, directory and file delete, all text string naming, copy data to HDD and many others

- **Print options**

Print your directory and file lists in the same order as your HDD structure or alphabetically. Also the C.L.S. can be printed.

The HD-TechManager6000 is delivered with the special CE approved parallel port and USB cable, program CD-ROM, owners manual and the HD-SX6 system update disk.

The HD-TechManager6000 is a 32bit (Windows95/98/2000) application for the IBM-PC or compatibles. Unfortunately the USB implementation on the Win95/USB version doesn't fully support the actual USB standard (Message from Microsoft)

## FD-TechBackup

If you like to have your data not only on the computer backup media but also as a FD backup, the FD-TechBackup offer an easy to use program to generate disks with the most important files. For more details and prices please ask your dealer for the main software leaflet or send us a message ([info@keysoftservice.ch](mailto:info@keysoftservice.ch)).

## LyricsEditor

Not only for the Technics Custom Lyrics we have developed a MIDI/TECH lyrics editor where you can rework you personal lyrics on your songs. For more details and prices please ask your dealer for the actual software leaflet or send us a short message ([info@keysoftservice.ch](mailto:info@keysoftservice.ch)).