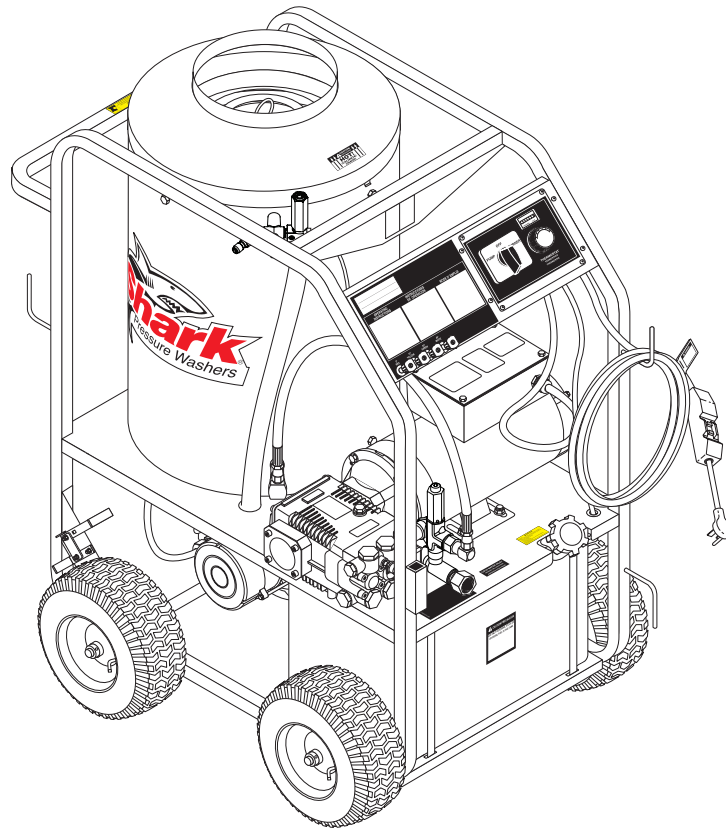




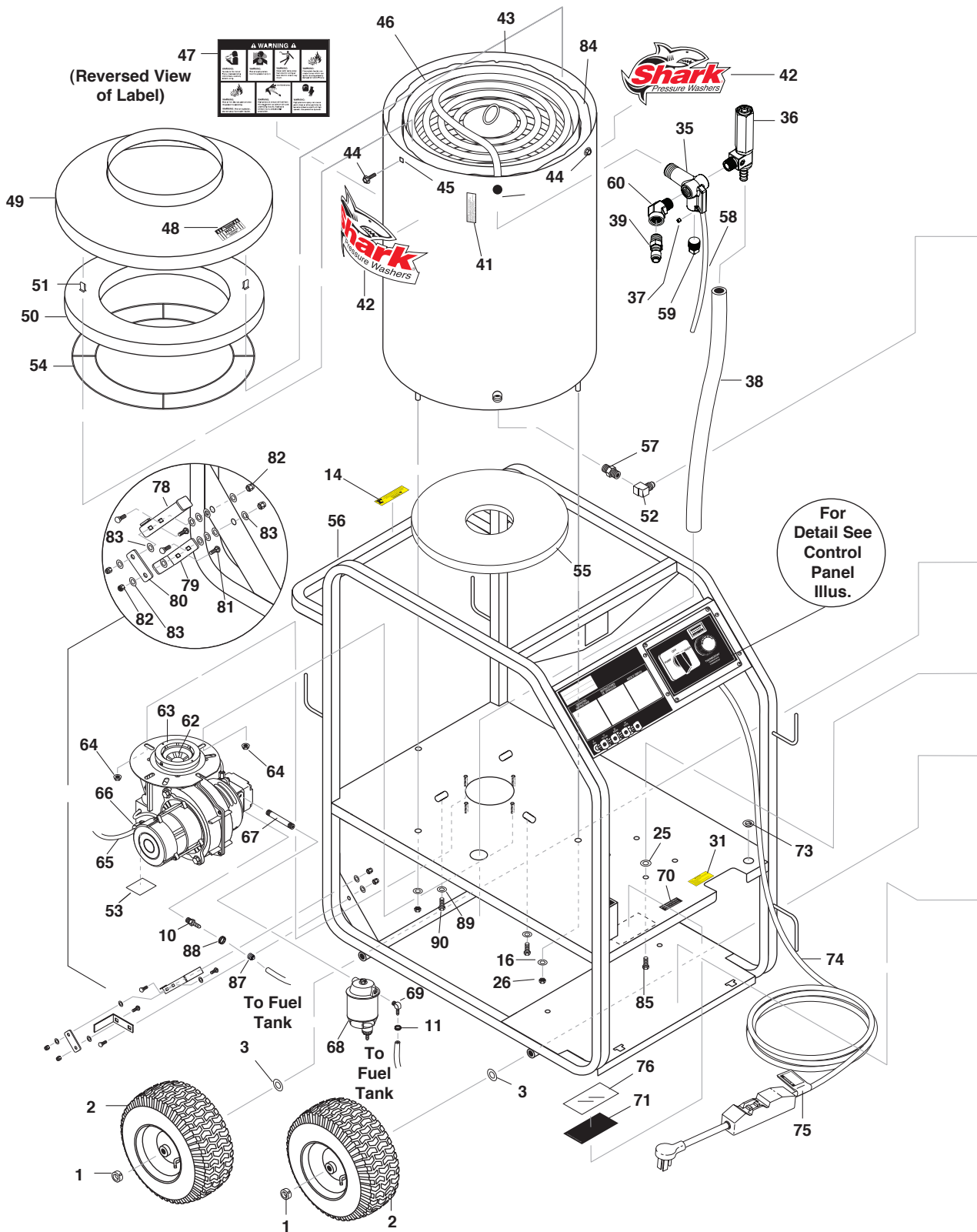
OPERATOR'S MANUAL



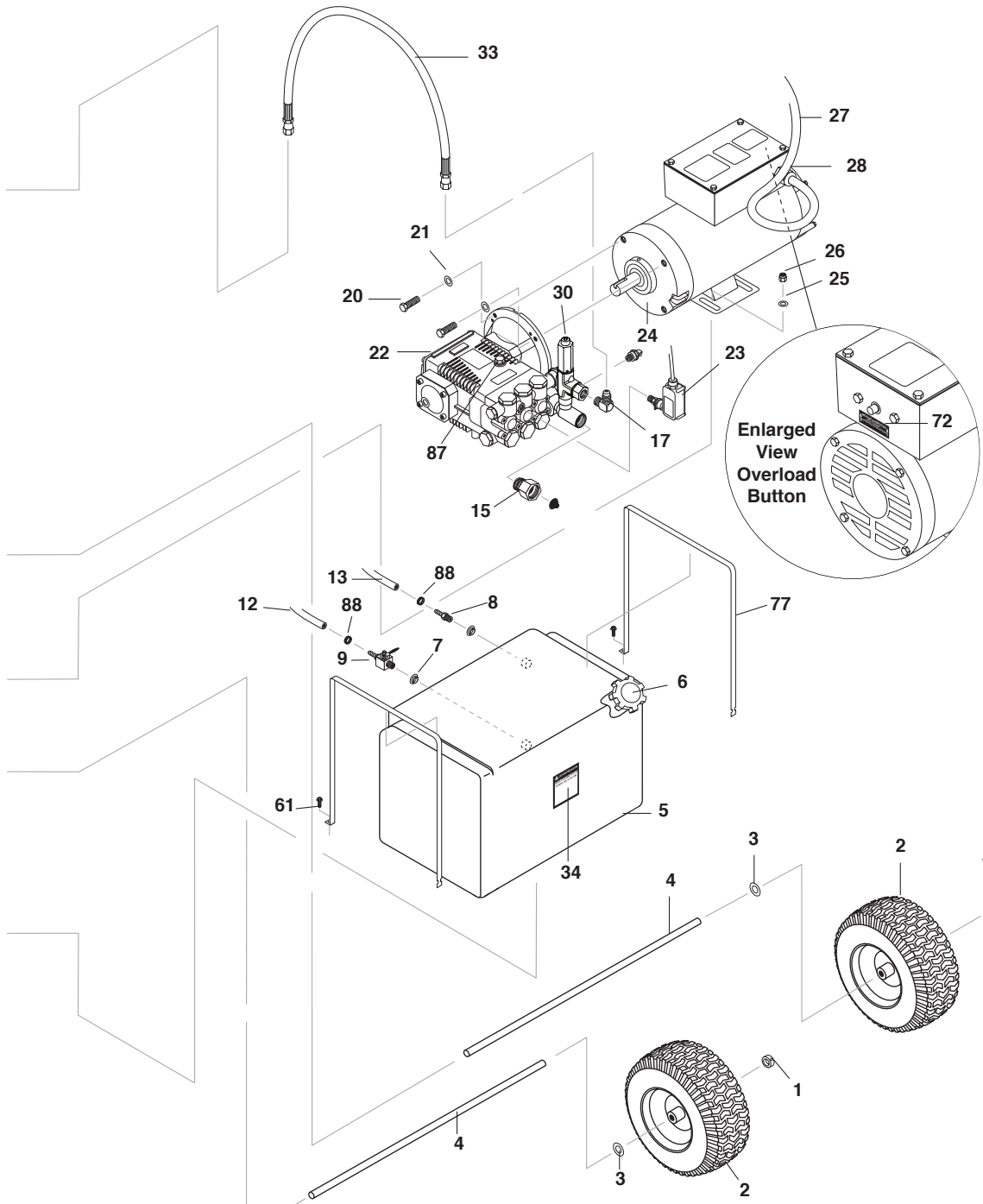
<u>MODEL</u>	<u>ORDER #</u>
STP-231007D	1.109-101.0
STP-201507D	1.109-102.0
STP-352007A	1.109-103.0
STP-231007D	1.109-133.0
STP-352007A	1.109-134.0

EXPLODED VIEW - LEFT

(Reversed View of Labels)



EXPLODED VIEW - RIGHT



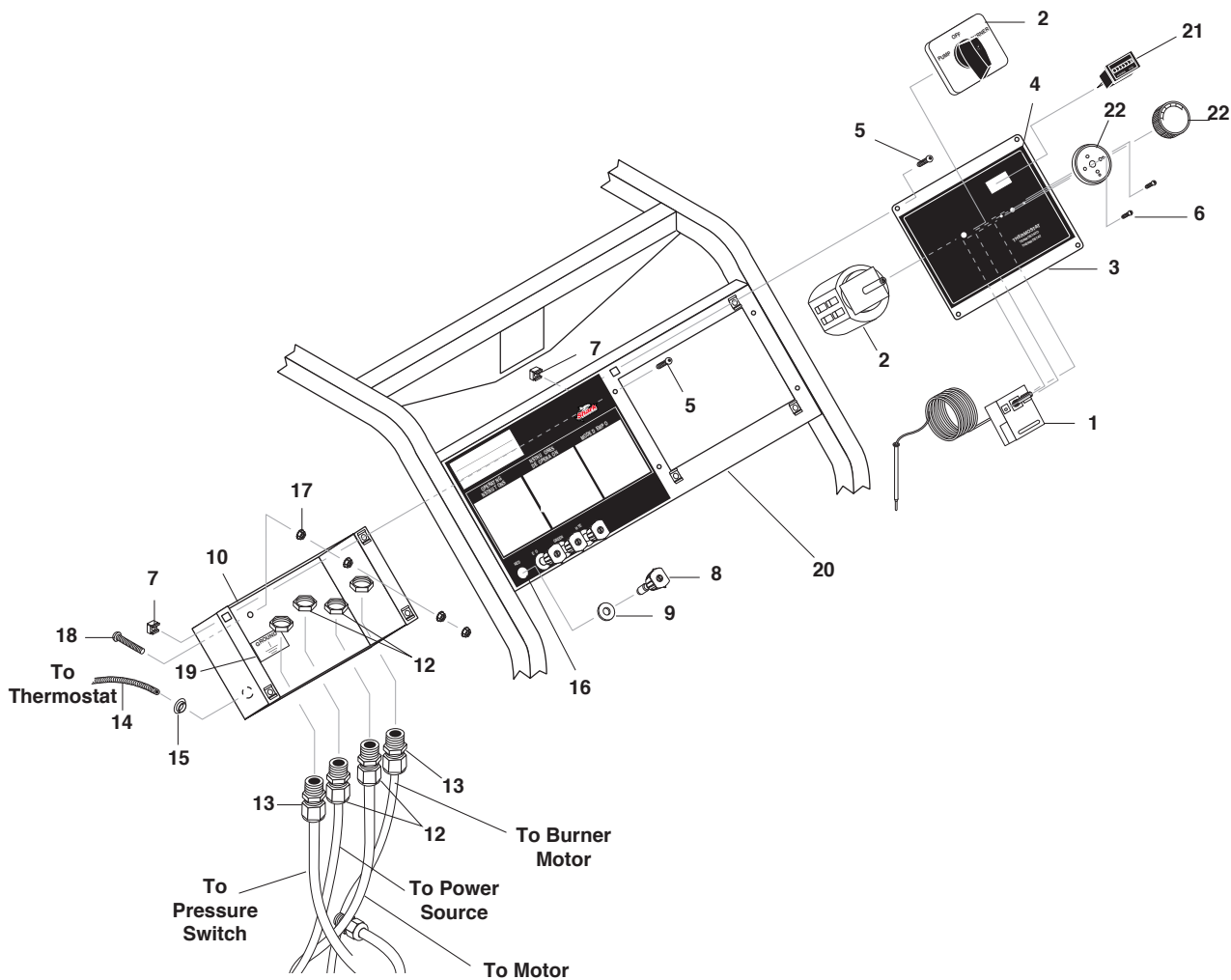
EXPLODED VIEWS PARTS LIST

ITEM	PART NO.	DESCRIPTION	QTY	ITEM	PART NO.	DESCRIPTION	QTY
1	9.802-782.0	Collar, 5/8" Bore Shaft	4	30	8.754-696.0	Unloader, VBT Banjo 1/2M 3/8M, 3000PSI	1
2	8.754-435.0	Wheel & Pu Tire Assy, 12" Steel Rim	4		9.175-018.0	UU1 3500PSI, Universal Unloader (352007A)	1
3	9.802-810.0	Washer, 5/8", Flat, SAE	4	31	9.800-049.0	Label, Manufacturer's Cleaning Solution	1
4	8.922-672.0	Axle Long	2	33	8.918-425.0	Hose, 3/8" x 29", 2 Wire, Pressure Loop	1
5	9.802-081.0	Tank, Fuel 6 Gallon Blank	1	34	9.800-002.0	Label, Use Only Kerosene	1
6	9.802-089.0	Cap, Fuel Tank, Plastic H60-AV	1	35	9.149-003.0	Manifould Coil Outlet Dicharge	1
7	9.802-053.0	Bushing, Rubber, Nitrile	2	36	8.902-433.0	Valve Safety, Relief	1
8	9.802-141.0	Hose Barb, 1/4" Barb x 3/8" Barb, Double	1	37	9.196-012.0	Plug 10-24UNF x 1/4	1
9	9.802-177.0	Valve, 1/4" Shut-Off	1	38	8.711-785.0	Hose, 3/8" Push-On	2.75 ft.
10	9.802-138.0	Hose Barb, 1/4" Barb x 1/4" ML Pipe	1	39	9.802-171.0	Nipple, 3/8" x 3/8" NPT ST Male	1
11	6.390-126.0	Clamp, Hose, UNI .46 - .54	4	41	9.800-021.0	Label, Hot Water Outlet	1
12	9.802-254.0	Hose, 1/4" Push-On, Fuel Line	11"	42	8.900-870.0	Label, Shark Logo Die-Cut	2
13	9.802-254.0	Hose, 1/4" Push-On, Fuel Line	7"	43	8.919-733.0	Coil, Wrap, Outer, Weldement	1
14	9.800-018.0	Label, Tipover Hazard	1	44	9.802-753.0	Screw, 1/4" x 3/4" HH NC, Whiz Loc	8
15	9.802-146.0	Swivel, 1/2" MP x 3/4" GHF w/Strainer	1	45	9.802-793.0	Nut, Cage, 1/4" x 16 Gauge	4
16	9.198-014.0	Washer 21/64 X 1"	4	46	8.925-217.0	Spare Coil Assy Vertical Mini MTY	1
17	9.802-039.0	Elbow, 1/2 JIC 3/8, 90° (352007A)	1	47	9.800-041.0	Label, Warning, Text	1
	9.802-042.0	Elbow 1/2" JIC, 3/8 Fem, 90DGR	1	48	9.800-006.0	Label, Hot/Caliete w/Arrows Warning	1
18	9.804-025.0	Pump Protector, 1/4", 145°	1	49	8.719-913.0	Top Hat, Coil	1
20	9.802-720.0	Bolt, 3/8" x 1", NC HH	4	50	9.802-904.0	Insulation, Tank Head, 16" OD x 8" ID	1
21	9.802-814.0	Washer, 3/8" Split Ring Lock, Zinc	4	51	9.802-825.0	Clip, Retaining U-Type	4
22	8.923-763.0	Pump, 2030S (231007D)	1	52	9.802-042.0	Elbow, 1/2" JIC x 3/8" Fem, 90°	1
	8.923-808.0	Pump 3540F (352007A)	1	53	9.801-266.0	Label, Shark Clear Flame	1
23	9.802-458.0	Switch, Pressure, N/O, 1/4" NPT SS	1	54	9.803-108.0	Retainer Ring, Insulation	1
24	9.804-516.0	Motor, 1.5 HP 120V 1725 RPM (231007D)	1	55	9.802-900.0	Insulation, Tank Bottom, 1" Blanket	1
	8.754-709.0	Motor, 2HP 1PH 115V 1750 RPM, 56C ODP	1	56	9.803-120.0	Assembly, Frame, Black	1
	9.802-341.0	Motor, 5HP 1PH 230V 3450 RPM (352007A)	1		8.922-545.0	Assembly, Frame (133.0 & 134.0)	1
25	8.718-980.0	Washer, 5/16" Flat	8	57	8.705-974.0	Nipple, 3/8" x 3/8" Hex	1
26	9.802-776.0	Nut, 5/16" ESNA, NC	8	58	8.750-094.0	Thermostat, 150C/302F	1
27	9.802-427.0	Cord, Service, SOWA, 12/3 (201507D)	3 ft.	59	8.706-241.0	Plug, 3/8, SQ head	1
	9.802-436.0	Cord, Service, SEO, 10/3 (231007D, 352007A)	2.67 ft.	60	9.802-041.0	Elbow, 3/8", Steel, Street, 45°	1
28	8.752-969.0	Strain Relief, Small (231007D, 201507D)	1	61	9.802-753.0	Screw, 1/4-20 x 3/4"	2
	9.802-518.0	Strain Relief, STRT Lq Tite (352007A)	1	62	8.918-907.0	Burner KNA, 120V, (231007D, 201507D)	1
					9.802-555.0	Burner, AFG, 120V, F4 Cone	1

EXPLODED VIEWS PARTS LIST

(231007D, 201507D)				ITEM	PART NO.	DESCRIPTION	QTY
ITEM	PART NO.	DESCRIPTION	QTY				
	9.804-518.0	Burner, Beckett, 230V AFG (352007A)	1	88	8.750-933.0	Band Hose Clamp, Hose ID 1/8" - 5/16"	3
	8.918-909.0	Burner KNA, 230V (352007A)	1	89	9.802-819.0	WASHER, 7/16" x 2 1/2", ZINC, PG FOOT	3
63	8.754-890.0	Fuel Nozzle, 1.00 x 90AZ	1	90	9.802-710.0	Screw 5/16" x 1" NC	3
	8.754-888.0	Fuel Nozzle, 1.75 x 90BZ (352007A)	1				
64	9.802-781.0	Nut, 3/8" Flange, Whiz Loc, NC	4				
65	9.802-424.0	Cord, Service, SEO, 16/4, Coleman	64"				
66	9.802-519.0	Strain Relief, 1/2" Metal, Two Screw	1				
67	9.803-264.0	Nipple, 1/4" x 3", Black Pipe	1				
68	8.725-306.0	Filter, Parker Fuel/Oil/H2O (10 Micron), Generic	1				
69	8.706-958.0	Hose Barb, 1/4" Barb x 1/4" Pipe, 90°	1				
70	9.800-020.0	Label, Cold Water Inlet	1				
71	9.800-014.0	Label, Intended for Outdoor Use	1				
72	9.800-032.0	Label, Motor Overload Reset, Lexan	1				
73	9.802-103.0	Bushing, Snap	1				
74	9.802-432.0	GFCI, 120V 15A, w/36' 12-3 Cord (231007D)	1				
	9.802-431.0	GFCI, 120V 20A, w/36' 12-3 Cord (201507D)	1				
	9.802-430.0	GFCI, 240V 1PH 30A, w/36' 10-3 Cord (352007A)	1				
75	9.800-015.0	Label, Warning, Service Cord	1				
76	9.800-034.0	Label, Clear Lexan, 2-1/4" x 4-1/2"	1				
77	9.803-092.0	Fuel Strap Long	2				
	8.922-616.0	Fuel Strap Long (133.0, 134.0)	2				
78	9.803-111.0	Lever, Brake	1				
	8.922-518.0	Lever, Brake (133.0, 134.0)	1				
79	9.802-996.0	Bracket, Brake Pad	1				
	8.922-519.0	Bracket, Brake Pad Green (133.0, 134.0)	1				
80	9.802-997.0	Linkage, Brake	1				
	8.922-520.0	Linkage, Brake (133.0, 134.0)	1				
81	9.802-705.0	Bolt, Carriage	4				
82	9.802-773.0	Nut, 1/4" ESNA	4				
83	9.802-802.0	Washer, 1/4"	12				
84	9.802-908.0	Insulation, Blanket, 18" x 52", Fiberglass	1				
85	9.802-709.0	Bolt, 5/16" x 3/4" NC	4				
86	9.802-047.0	Adapter, 1/2" x 1/2" Pipe	1				
87	8.754-911.0	Check Valve, 1 Way, 1/4" Barb	1				

CONTROL PANEL EXPLODED VIEW

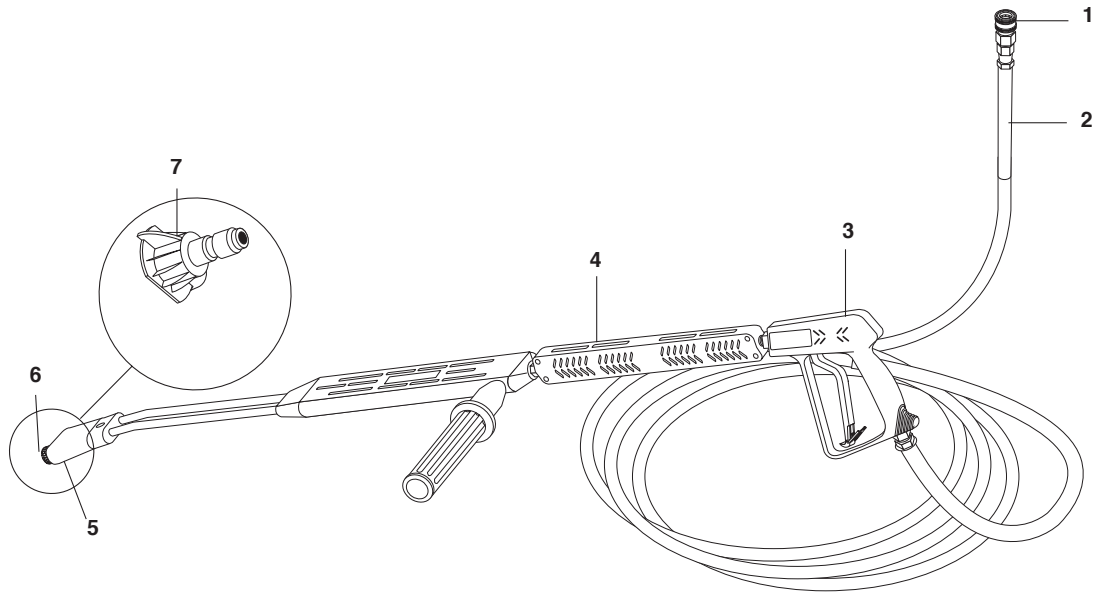


CONTROL PANEL EXPLODED VIEW PARTS LIST

ITEM	PART NO.	DESCRIPTION	QTY	ITEM	PART NO.	DESCRIPTION	QTY
1	8.750-094.0	Thermostat, 150C/302F	1	13	9.802-514.0	Strain Relief, Strt, Lq, Tite	2
2	9.802-449.0	Switch, 3 PS, 120V-230V, 1Ph	1	14	9.802-447.0	Conduit, Corr, Tubing, 1/4"	2 ft.
3	9.804-519.0	Cover, Electric Box, Black	1	15	9.802-103.0	Bushing, Snap, 5/8"	1
	8.922-552.0	Cover, Elec Box (133.0, 134.0)	1	16	9.804-523.0	Label, Shark STP Control Panel	1
4	9.804-520.0	Label, Electric Box	1		8.753-780.0	Label Control Panel (133.0, 134.0)	1
5	9.802-7590	Screw, 10/32" x 1/2" BHSOC Blk	8	17	9.802-695.0	Nut, 10/32" Keps	4
6	8.718-779.0	Screw, 4mm x 6mm	4	18	9.802-762.0	Screw, 10/32" x 1-1/4"	1
7	9.802-791.0	Nut, Cage, 10/32" x 16 Ga	8	19	9.800-040.0	Label, Ground	1
8	See Page 17	Nozzle	4	20	9.804-524.0	Panel, Control, Black	1
9	9.802-064.0	Grommet, Rubber, Nozzle Holder	4		8.922-550.0	Panel, Control (133.0, 134.0)	1
10	9.804-521.0	Box, Electric, black	1		9.802-754.0	▲ Screw, 1/4" x 1/2" HH, NC, Whiz Loc	4
	8.922-551.0	Box, Electric (133.0, 134.0)	1		9.802-775.0	▲ Nut, 1/4" Flange	4
11	8.712-190.0	Bezel, Plastic Thermostat	1	21	9.802-283.0	Hour Meter	1
12	8.752-969.0	Strain Relief, Strt, Lq, Tite Small (231007D, 201507D, 352007A)	2	22	8.750-096.0	Knob Thermostat	1

▲ Not Shown

HOSE AND SPRAY GUN EXPLODED VIEW



HOSE AND SPRAY GUN PARTS LIST

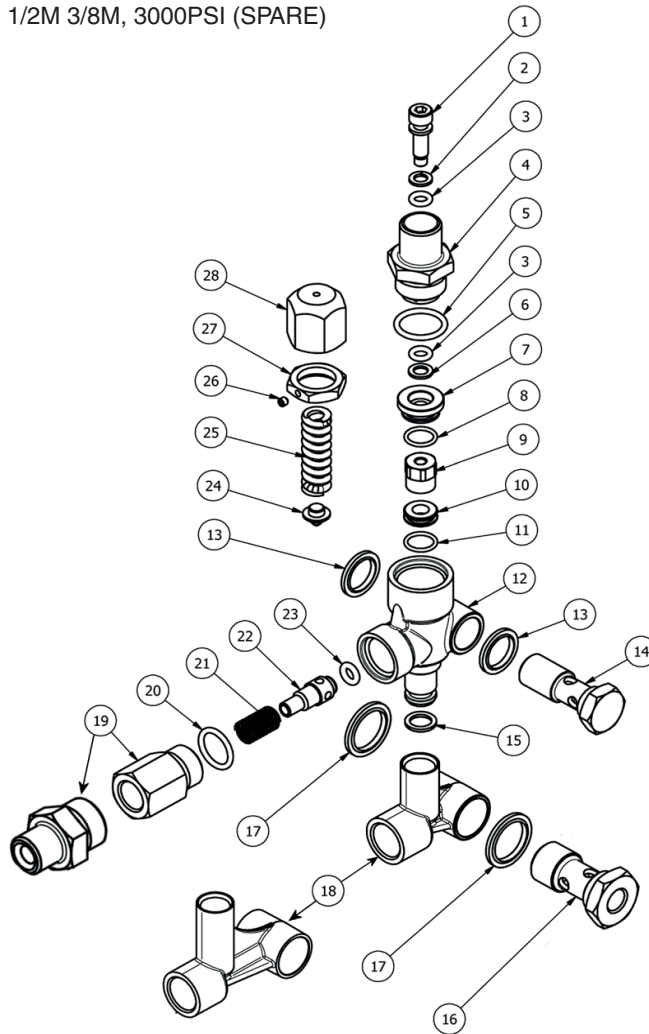
ITEM	PART NO.	DESCRIPTION	QTY	ITEM	PART NO.	DESCRIPTION	QTY
1	9.802-166.0	Coupler, 3/8" Female	1	7	9.802-288.0	Nozzle, SAQMEG 1503, Yellow (201507D)	1
	9.802-100.0	▲ Quick Coupler O-Ring LG	1		9.802-289.0	Nozzle SAQMEG 2503, Green (201507D)	1
2	8.925-130.0	Hose, 3/8" X 50' 1W 4000PSI SW/SO/CPL	1		9.802-290.0	Nozzle, SAQMEG 4003, White (201507D)	1
3	8.710-384.0	Gun, St-1500, 5000 PSI, 10.4 Gpm	1		8.712-338.0	Nozzle, SAQMEG 1503.5, Yellow (231007D)	1
4	9.802-222.0	Wand, VP Zinc 1/4" w/Coupler, w/Soap Nozzle	1		8.712-339.0	Nozzle, SAQMEG 2503.5, Green (231007D)	1
	9.803-267.0	▲ AL Wand Repair Kit, Stainless Seat	1		8.712-340.0	Nozzle, SAQMEG 4003.5, White (231007D) Red (352007A)	1
5	9.802-286.0	Brass Soap Nozzle Only, 1/8" 1	1		9.802-300.0	Nozzle, SAQMEG 1505 Yellow (352007A)	1
6	9.802-165.0	Coupler, 1/4" Male	1		9.802-301.0	Nozzle, SAQMEG 2505, Green (352007A)	1
	9.802-096.0	Quick Coupler O-Ring Sm	1		9.802-302.0	Nozzle, SAQMEG 4005, White (352007A)	1

▲ Not Shown

VBT UNLOADER EXPLODED VIEW

8.754-696.0

UNLOADER, VBT BANJO 1/2M 3/8M, 3000PSI (SPARE)

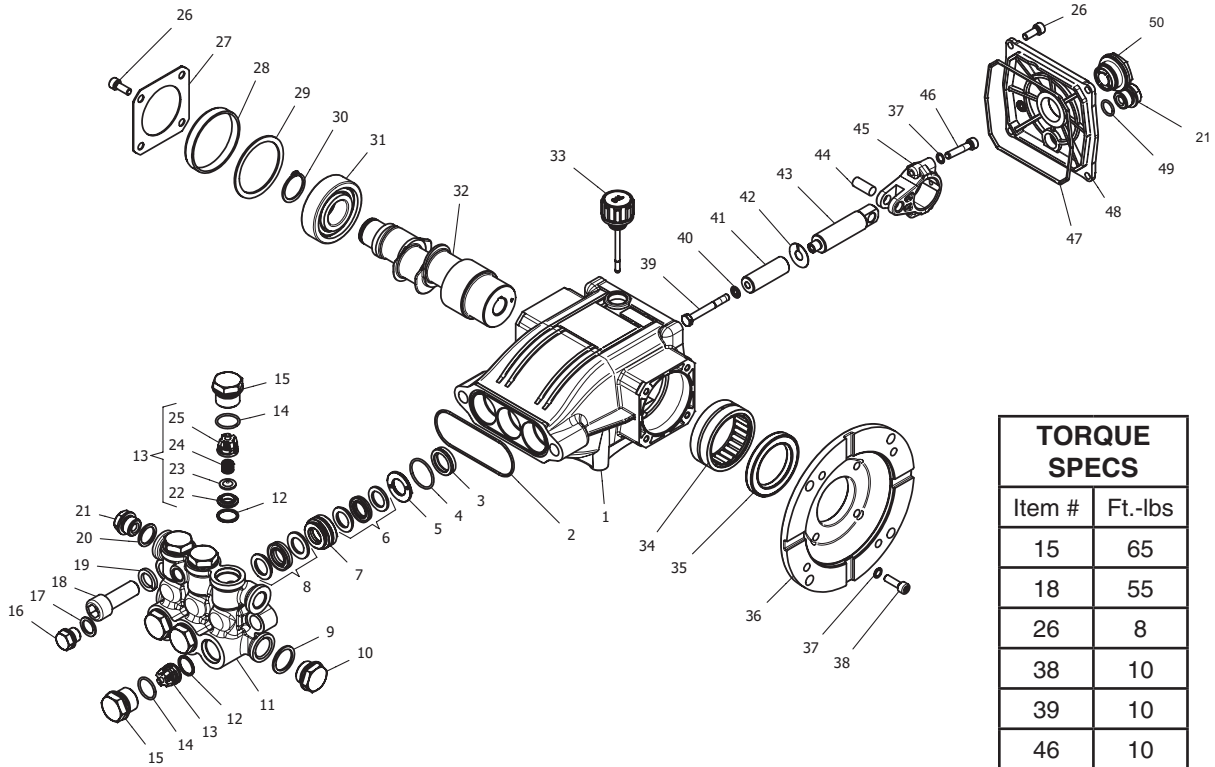


VBT UNLOADER EXPLODED VIEW PARTS LIST

ITEM	PART #	DESCRIPTION	KIT	QTY	ITEM	PART #	DESCRIPTION	KIT	QTY
1*	8.754-929.0	Stem	C	1	17	9.803-914.0	Seal Washer 1/2)		1
2*	9.803-912.0	Backup Ring	A	1	18	8.754-937.0	Bypass Manifold		1
3*	8.754-930.0	O-ring, Ø2.62 x 6.02	A	2	19	9.802-892.0	Outlet Connector 3/8 MPT		1
4	8.730-882.0	Stem Connector		1	20*	9.803-191.0	O-ring, Ø2.62 X 17.13	A,B	1
5*	9.803-193.0	O-ring, Ø2.62 x 20.24	A	1	21*	8.933-017.0	Poppet Spring	B	1
6*	9.803-908.0	Backup Ring	A	1	22*	8.754-939.0	Poppet	B	1
7	9.803-907.0	Guide Bushing		1	23*	8.754-940.0	O-ring, Ø3 x 6	A,B	1
8*	9.803-906.0	O-ring, Ø1.78 x 14	A	1	24*	8.754-961.0	Plate	C	1
9*	8.754-959.0	Ball SubAssembly	C	1	25*	8.933-018.0	Spring 1500-4000 PSI	C	1
10*	8.754-933.0	Seat	C	1	26	8.933-021.0	Set Screw		1
11*	8.754-934.0	O-ring, Ø1.78 x 12.42	A,C	1	27	9.803-925.0	Nut		1
12	8.754-935.0	Valve Body		1	28	9.803-926.0	Knob, Brass, Unloader		1
13	9.802-893.0	Seal Washer 3/8		1	* Included in Kit				
14	9.803-919.0	Banjo Bolt 3/8		1	Kit A	8.754-941.0	O-Ring Repair Kit		
15*	8.754-936.0	O-ring, Ø2.62 x 10.78	A	1	Kit B	8.754-942.0	Outlet Repair Kit		
16	9.803-920.0	Banjo Bolt, 1/2, w/1/4" Port		1	Kit C	8.754-957.0	Stem Repair Kit		

SF SERIES PUMP EXPLODED VIEW

8.923-805.0 SF 2030S



TORQUE SPECS	
Item #	Ft.-lbs
15	65
18	55
26	8
38	10
39	10
46	10

SF SERIES PUMP PARTS LIST

ITEM	PART NO.	DESCRIPTION	QTY	ITEM	PART NO.	DESCRIPTION	QTY
1	8.754-841.0	Crankcase	1	19	8.754-850.0	Washer, Lock	2
2	8.754-846.0	O-ring Ø1.78 X 72.75	1	20	9.803-198.0	Washer, Copper G3/8	1
3*	See Kits Below	Plunger Oil Seal	3	21	8.707-262.0	Plug, Brass G3/8	2
4*	See Kits Below	O-ring Ø1.78 X 26.7	3	22*	See Kits Below	Valve Seat	6
5*	See Kits Below	Washer, Pressure Ring	3	23*	See Kits Below	Valve Plate	6
6*	See Kits Below	U-Seal	3	24*	See Kits Below	Valve Spring	6
7*	See Kits Below	Pressure Ring	3	25*	See Kits Below	Valve Cage	6
8*	See Kits Below	U-Seal	3	26	9.802-939.0	Screw, M6 X 16	8
9	9.803-199.0	Washer, Copper G1/2	1	27	8.717-137.0	Bearing Cover	1
10	9.802-926.0	Plug, Brass G1/2	1	28	9.803-954.0	Bearing Seal	1
11	8.754-852.0	Manifold (16mm Models)	1	29	8.754-843.0	Seal Spacer, Crankshaft	1
	8.754-853.0	Manifold (14mm Models)	1	30	9.802-914.0	Snap Ring, 25 mm	1
12*	8.717-233.0	O-ring Ø1.78 X 15.6	6	31	9.803-955.0	Bearing, Ball	1
13*	See Kits Below	Valve Assembly	6	32	8.754-836.0	Shaft, 5/8" Hollow	1
14*	9.803-948.0	O-ring Ø1.78 X 18.77	6	33	8.754-219.0	Oil Dipstick	1
15	9.803-949.0	Valve Plug	6	34	8.754-840.0	Bearing Needle	1
16	8.754-851.0	Plug, Brass G1/4 (16mm)	1	35	8.754-826.0	Seal, Crankshaft	1
17	8.754-845.0	Washer, Copper G1/4 (16mm Models)	1	36	8.754-844.0	Flange, Motor	1
18	8.754-854.0	Bolt, Manifold M14 X 40	2	37	9.803-210.0	Washer	10
				38	8.752-824.0	Screw, 6 mm	4

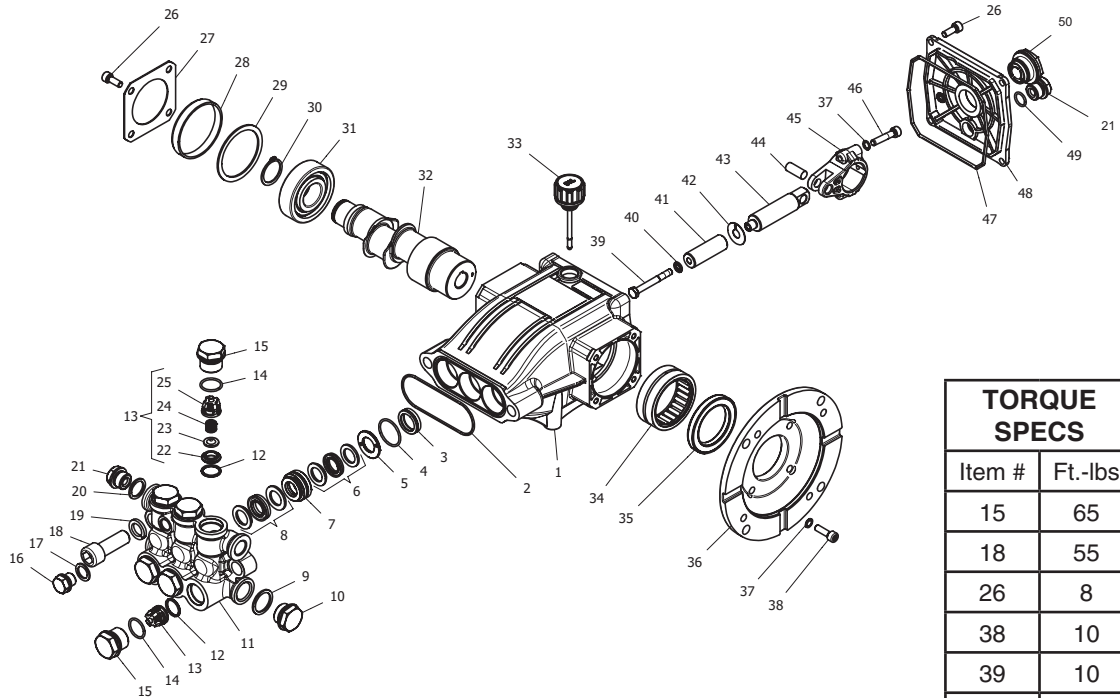
SF SERIES PUMP PARTS LIST

ITEM	PART NO.	DESCRIPTION	QTY
39*	8.754-855.0	Bolt, Plunger	3
40*	8.754-092.0	Spacer, Copper	3
41	8.754-848.0	Plunger, 16mm	3
42	9.803-962.0	Spacer, Copper	3
43	8.754-827.0	Plunger Rod	3
44	9.803-965.0	Connecting Rod Pin	3
45	9.803-966.0	Connecting Rod	3
46	8.933-020.0	Screw, Connecting Rod	6
47	8.754-847.0	O-ring Ø2.62 X 111.62	1
48	8.754-842.0	Cover, Crankcase	1
49	9.803-906.0	O-ring Ø1.78 X 14	1
50	9.803-202.0	Sight Glass, G3/4	1

REPAIR KIT NUMBER	8.754-860.0	8.754-856.0	8.754-861.0	8.754-857.0	8.754-862.0	8.754-858.0	8.754-859.0	9.803-937.0
KIT DESCRIPTION	Plunger Seals 14 mm**	Plunger Seals 16 mm**	Seal Packing 14 mm**	Seal Packing 16 mm**	Plunger 14 mm**	Plunger 16 mm**	Complete Valve	Plunger Oil Seals
ITEM NUMBERS INCLUDED	4, 6, 8	4, 6, 8	4, 5, 6, 7, 8	4, 5, 6, 7, 8	39, 40, 41, 42	39, 40, 41, 42	12, 13, 14	3

SF SERIES PUMP EXPLODED VIEW

8.923-808.0 SF3530F



TORQUE SPECS	
Item #	Ft.-lbs
15	65
18	55
26	8
38	10
39	10
46	10

SF SERIES PUMP EXPLODED VIEW PARTS LIST

ITEM	PART NO.	DESCRIPTION	QTY	ITEM	PART NO.	DESCRIPTION	QTY
1	8.754-841.0	Crankcase	1	19	8.754-850.0	Washer, Lock	2
2	8.754-846.0	O-ring Ø1.78 X 72.75	1	20	9.803-198.0	Washer, Copper G3/8	1
3*	See Kits Below	Plunger Oil Seal	3	21	8.707-262.0	Plug, Brass G3/8	2
4*	See Kits Below	O-ring Ø1.78 X 26.7	3	22*	See Kits Below	Valve Seat	6
5*	See Kits Below	Washer, Pressure Ring	3	23*	See Kits Below	Valve Plate	6
6*	See Kits Below	U-Seal	3	24*	See Kits Below	Valve Spring	6
7*	See Kits Below	Pressure Ring	3	25*	See Kits Below	Valve Cage	6
8*	See Kits Below	U-Seal	3	26	9.802-939.0	Screw, M6 X 16	8
9	9.803-199.0	Washer, Copper G1/2	1	27	8.717-137.0	Bearing Cover	1
10	9.802-926.0	Plug, Brass G1/2	1	28	9.803-954.0	Bearing Seal	1
11	8.754-852.0	Manifold (16mm Models)	1	29	8.754-843.0	Seal Spacer, Crankshaft	1
	8.754-853.0	Manifold (14mm Models)	1	30	9.802-914.0	Snap Ring, 25 mm	1
12*	8.717-233.0	O-ring Ø1.78 X 15.6	6	31	9.803-955.0	Bearing, Ball	1
13*	See Kits Below	Valve Assembly	6	32	8.754-839.0	Shaft, 5/8" Hollow	1
14*	9.803-948.0	O-ring Ø1.78 X 18.77	6	33	8.754-219.0	Oil Dipstick	1
15	9.803-949.0	Valve Plug	6	34	8.754-840.0	Bearing Needle	1
16	8.754-851.0	Plug, Brass G1/4 (16mm)	1	35	8.754-826.0	Seal, Crankshaft	1
17	8.754-845.0	Washer, Copper G1/4 (16mm Models)	1	36	8.754-844.0	Flange, Motor	1
18	8.754-854.0	Bolt, Manifold M14 X 40	2	37	9.803-210.0	Washer	10
				38	8.752-824.0	Screw, 6 mm	4

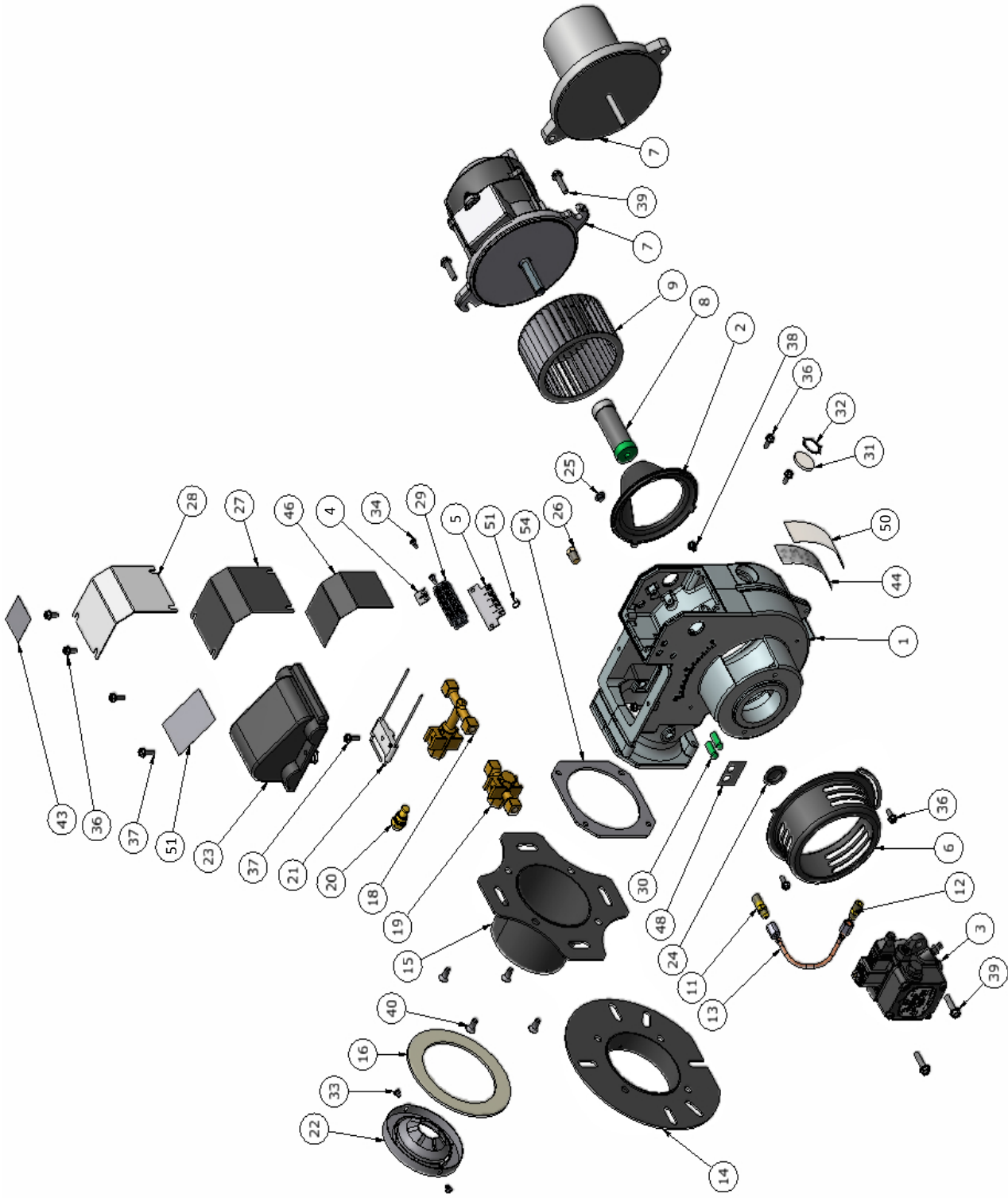
SF SERIES PUMP EXPLODED VIEW PARTS LIST

ITEM	PART NO.	DESCRIPTION	QTY
39*	8.754-855.0	Bolt, Plunger	3
40*	8.754-092.0	Spacer, Copper	3
41	8.754-849.0	Plunger, 14mm	3
42	9.803-962.0	Spacer, Copper	3
43	8.754-827.0	Plunger Rod	3
44	9.803-965.0	Connecting Rod Pin	3
45	9.803-966.0	Connecting Rod	3
46	8.933-020.0	Screw, Connecting Rod	6
47	8.754-847.0	O-ring Ø2.62 X 111.62	1
48	8.754-842.0	Cover, Crankcase	1
49	9.803-906.0	O-ring Ø1.78 X 14	1
50	9.803-202.0	Sight Glass, G3/4	1

REPAIR KIT NUMBER	8.754-860.0	8.754-861.0	8.754-862.0	8.754-859.0	9.803-937.0
KIT DESCRIPTION	Plunger Seals 14 mm	Seal Packing 14 mm	Plunger 14 mm	Complete Valve	Plunger Oil Seals
ITEM NUMBERS INCLUDED	4, 6, 8	4, 5, 6, 7, 8	39, 40, 41, 42	12, 13, 14	3
NO. OF CYLINDERS KIT WILL SERVICE	3	1	1	6	3

Replacement Parts

For best performance specify genuine KNA replacement parts



Replacement Parts

For best performance specify genuine KNA replacement parts

Item #	Part #	Description	Qty	Item #	Part #	Description	Qty
1	8.919-050.0	BURNER HOUSING ASSEMBLY	1	23	8.919-116.0	IGNITOR, BURNER 12VDC	1
2	8.751-160.0	AIR GUIDE		24	8.751-165.0	PLUG, HOLE 0.875 PLASTIC	1
3	8.700-758.0	FUEL PUMP, SUNTEC A2VA-3106 12-24V SOL	1	25	8.750-830.0	PLUG, HOLE 0.285 PLASTIC	1
3	8.700-759.0	FUEL PUMP, SUNTEC A2VA-3106 120V SOL	1	26	8.751-134.0	PLUG, 1/8" NPT x HEX SHOULDER	1
3	8.700-760.0	FUEL PUMP, SUNTEC A2VA-3106 230V SOL	1	27	8.918-454.0	GASKET, JUNCTION BOX	1
4	8.716-451.0	TERMINAL, JUMPER SPADE	1	28	8.750-542.0	COVER, JUNCTION BOX	1
5	9.802-510.0	CABLE, TIE, 4" BLACK	2	29	8.750-116.0	BLOCK, TERMINAL, 5 POLE	1
6	8.750-541.0	AIR BAND	1	30	8.750-817.0	LIGHT, INDICATOR, GREEN 14V	2
7	8.750-517.0	MOTOR, 1/6 HP 120V 60Hz	1	30	8.750-818.0	LIGHT, INDICATOR, GREEN 28V	1
7	8.750-518.0	MOTOR, 1/6 HP 230V 60Hz	1	30	8.750-819.0	LIGHT, INDICATOR, GREEN 125V	1
7	8.751-074.0	MOTOR, 1/7 HP 12VDC AMETEK	1	30	8.750-820.0	LIGHT, INDICATOR, GREEN 250V	1
8	8.750-543.0	COUPLING, FLEX, 1/2" x 5/16"	1	31	8.750-784.0	SITE GLASS	1
8	8.751-073.0	COUPLING, FLEX, 5/16" x 5/16"	1	32	8.750-785.0	RING, PUSH ON INTERNAL, 1305-112	1
9	8.750-520.0	FAN, 4.53" X 2.42", 1/2" BORE, F115-62S	1	33	8.733-001.0	SCREW, 8 x 1/4" HI LOW THREAD CUT, PPH	2
9	8.751-072.0	FAN, 4.53" x 2.42" x .313 BORE, F115-62S	1	34	8.718-762.0	SCREW, 8-32 X 1/2", M PH RDH PL	2
11	8.750-547.0	CONNECTOR, 37 DEG FLARE X 1/8" NPT, LONG	1	35	8.750-769.0	SCREW, 8/32 X 3/8" PH	1
12	8.750-545.0	CONNECTOR, 37 DEG FLARE X 1/8" NPT	1	36	8.718-810.0	SCREW, 10/32 x 1/2", WHIZ LOC FLANGE	6
13	8.749-000.0	FUEL LINE ASSEMBLY	1	37	8.750-770.0	SCREW, 10/32 x 5/8", WHIZ LOC FLANGE	3
14	8.918-864.0	FLANGE 1" TUBE ASSY, BURNER	1	38	8.750-816.0	SCREW, 10/32 X 1/4" GROUNDING	1
15	8.918-866.0	FLANGE 3" TUBE ASSY, BURNER	1	39	8.750-768.0	SCREW, 1/4-20 x 1", WHIZ LOC FLANGE	4
16	8.750-539.0	GASKET, FLANGE	1	40	8.750-771.0	SCREW, 1/4-20 X 1/2", PHIL FHMS	4
17	8.750-528.0	DISK, STATIC 2.00	1	42	—	LABEL, BRAND NAME	1
17	8.918-868.0	DISK, STATIC 2.75	1	43	9.801-268.0	LABEL, DISCONNECT POWER SUPPLY	1
17	8.918-869.0	DISK, STATIC 2.50	1	44	—	LABEL, SERIAL PLATE	1
17	8.918-870.0	DISK, STATIC 2.25	1	46	9.807-339.0	LABEL, WIRING DIAGRAM, BURNER 120V-120V	1
18	8.750-526.0	GUN, ELECTRODE / NOZZLE, 3"	1	46	9.807-340.0	LABEL, WIRING DIAGRAM, BURNER 230V-230V	4
19	8.750-525.0	GUN, ELECTRODE / NOZZLE, 1"	1	46	9.807-341.0	LABEL, WIRING DIAGRAM, BURNER 230V-120V	1
20	Varies	NOZZLE, FUEL	1	46	9.807-342.0	LABEL, WIRING DIAGRAM, BURNER 120V-24V	1
21	8.750-778.0	ELECTRODE, IGNITION	1	46	9.807-343.0	LABEL, WIRING DIAGRAM, BURNER 230V-24V	1
22	8.750-779.0	CONE, AIR F4	1	46	9.807-344.0	LABEL, WIRING DIAGRAM, BURNER 12VDC	1
22	8.750-782.0	CONE, AIR F6	1	48	9.801-274.0	LABEL, BURNER LIGHTS	1
22	8.750-780.0	CONE, AIR F12	1	49	8.919-105.0	PLATE, TERMINAL BLOCK NUMBERS	1
22	8.750-781.0	CONE, AIR F22	1	50	9.807-348.0	LABEL, CLEAR MYLAR	1
23	8.919-114.0	IGNITOR, BURNER 120V	1	51	9.807-345.0	LABEL, IGNITER 120V	1
23	8.919-115.0	IGNITOR, BURNER 230V	1	51	9.807-346.0	LABEL, IGNITER 230V	1
				51	9.807-347.0	LABEL, IGNITOR 12VDC	1