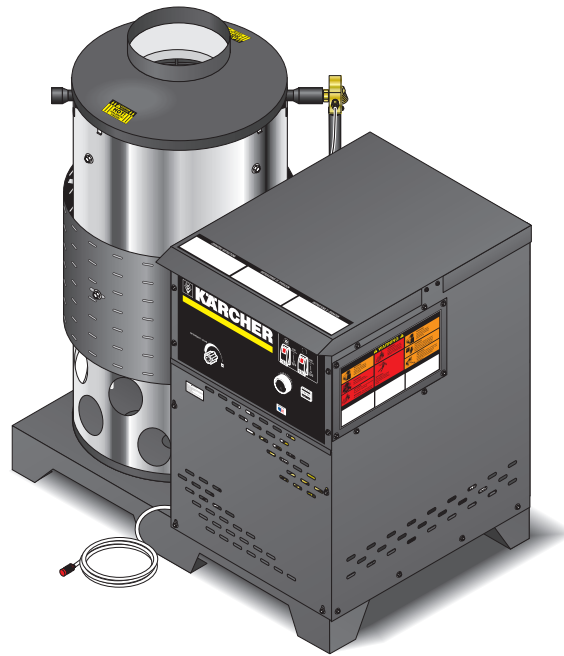




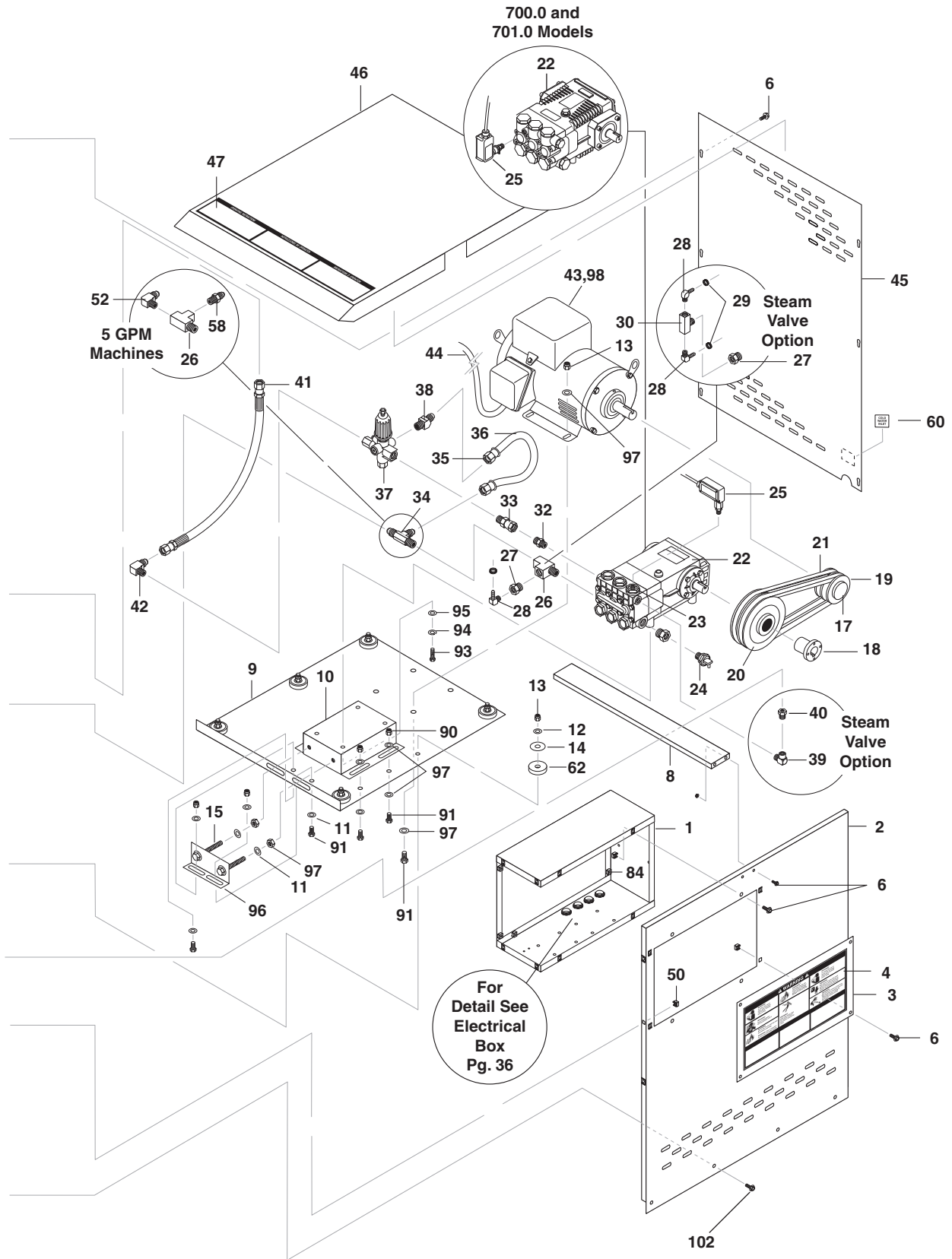
KÄRCHER

OPERATOR'S MANUAL



<u>MODEL #</u>	<u>ORDER #</u>	<u>MODEL #</u>
HDS NG 3.5/20 Ea ST	1.575-701.0	TNG-352007A
HDS NG 3.9/20 Ea ST	1.575-702.0	TNG-402007A
HDS NG 5.0/20 Ea ST	1.575-705.0	TNG-502007A
HDS NG 5.0/20 Eb ST	1.575-706.0	TNG-502007B
HDS NG 5.0/20 Ec ST	1.575-707.0	TNG-502007C
HDS NG 3.5/30 Ea ST	1.575-708.0	TNG-353007A
HDS NG 3.5/30 Eb ST	1.575-709.0	TNG-353007B
HDS NG 4.8/30 Eb ST	1.575-711.0	TNG-503007B
HDS NG 4.8/30 Ec ST	1.575-712.0	TNG-503007C
HDS NG 4.8/30 Ef ST	1.575-713.0	TNG-503007F

EXPLODED VIEW



EXPLODED VIEW PARTS LIST

ITEM	PART NO.	DESCRIPTION	QTY
1	9.802-969.0	Box, Electrical	1
2	9.802-981.0	Panel, Front	1
3	9.802-981.0	Cover, E-Box Access	1
4	9.800-012.0	Label, Warning	1
6	9.802-754.0	Screw, 1/4" x 1/2" HH NC, Whiz Loc (705.0, 706.0, 707.0, 711.0, 712.0, 713.0) (700.0, 701.0, 702.0, 703.0, 704.0, 708.0, 709.0, 710.0)	32 30
8	9.802-987.0	Brace, Panel	1
9	9.803-130.0	Platform, Motor 3/16" (All models except 700.0)	1
	9.803-129.0	Platform, Motor, 3 GPM (700.0)	1
10	9.803-131.0	Rail, Pump or Generator Combo	1
11	9.802-789.0	Nut, 3/8" Hex, NC	3
12	9.802-807.0	Washer, 3/8" SAE, Flat	22
13	9.802-779.0	Nut, 3/8", ESNA, NC	14
14	9.802-811.0	Washer, 3/8" x 1-1/2", Fender, SAE	14
15	9.802-735.0	Bolt, 3/8" x 5-1/2", Tap	2
16	9.802-792.0	▲ Nut, Cage, 3/8" x 12 Gauge	8
17	Bushing, See Specifications Pages		
18	Bushing, See Specifications Pages		
19	Pulley, See Specifications Pages		
20	Pulley, See Specifications Pages		
21	Belt, See Specifications Pages		
22	Pump, See Specifications Pages		
23	9.802-632.0	Cap, Valve, w/1/4" Gauge Port (702.0, 703.0, 704.0, 705.0, 706.0, 707.0, 708.0, 709.0, 710.0, 711.0, 712.0, 713.0)	1
24	9.802-182.0	Pump Protector, 1/2"	1
25	9.802-458.0	Switch, Pressure N/O, 1/4" NPT SS	1
26	9.802-122.0	Tee, 1/2" Street (705.0, 706.0, 707.0)	2 3
27	9.802-135.0	Bushing, Reducer, 1/2" x 1/4"	1
28	9.802-143.0	Hose Barb, 1/4" Barb x 1/4" Pipe, 90° (Steam Option)	1 2
29	9.802-200.0	Clamp, Screw, #4	3
30	9.802-120.0	Tee, 1/4" Branch Male (Steam Option)	1
32	9.802-036.0	Nipple, 1/2" JIC, 3/8" Pipe	1
33	9.802-048.0	Swivel, 1/2" JIC Female, 3/8" Male	1
34	9.802-134.0	Tee, 1/2" x 1/2" JIC 51# (700.0, 701.0, 702.0, 703.0, 704.0, 708.0, 709.0, 710.0)	1
35	9.802-151.0	Swivel, 1/2" JIC Fem, Push-On	2
	9.802-152.0	Swivel, 3/4" SAE Fem, Push-On (705.0, 706.0, 707.0, 711.0, 712.0, 713.0)	2
36	9.802-259.0	Hose, 1/2", Push-On	3 ft.
	9.802-261.0	Hose, 3/4", Push-On (705.0, 706.0, 707.0)	3 ft.
37	9.802-366.0	Unloader, AL-VRT 607, 7.8 GPM @ 4200 PSI	1
38	9.802-133.0	Elbow, 1/2" JIC x 3/8", 45°	1
39	9.802-030.0	Elbow, 3/8", Street (Steam Option)	1
40	9.802-046.0	Bushing, 3/8" x 1/4" Steel (Steam Option)	1
41	9.802-241.0	Hose, 3/8" x 25", 2 Wire, Pressure Loop	1

EXPLODED VIEW PARTS LIST

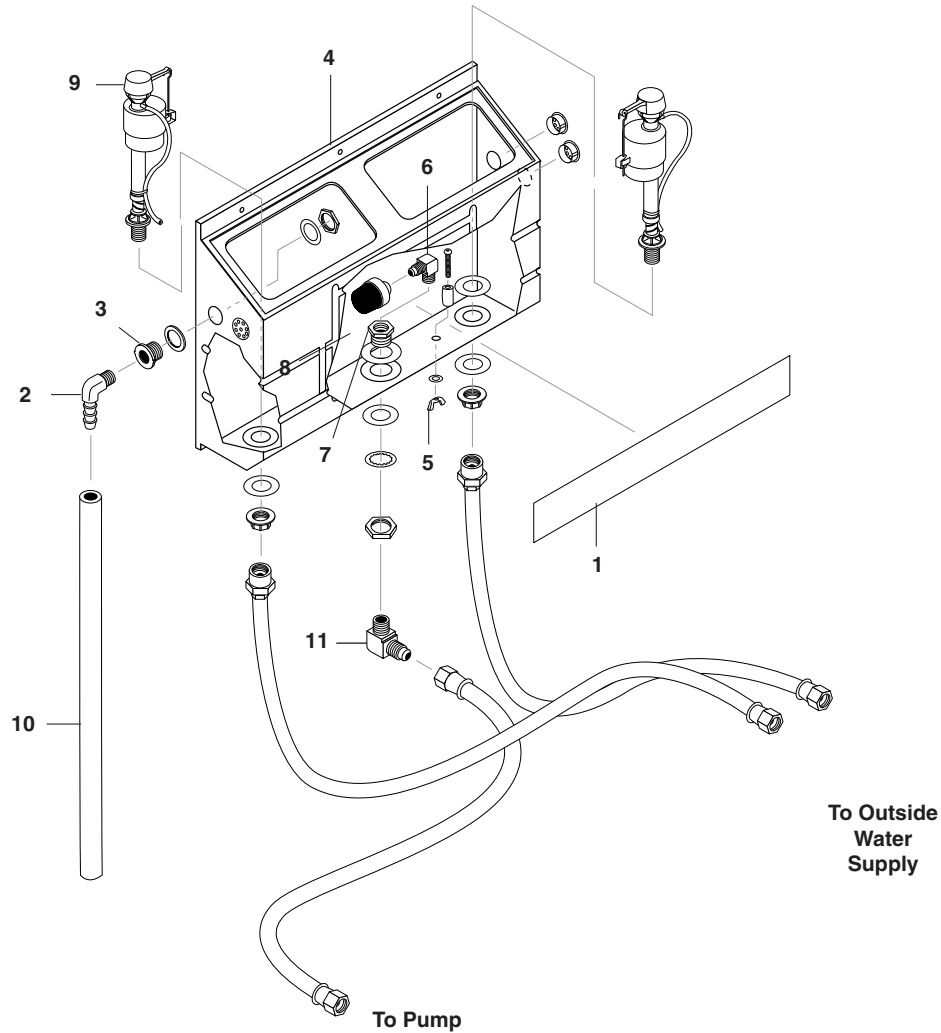
ITEM	PART NO.	DESCRIPTION	QTY
42	9.802-039.0	Elbow, 1/2" JIC, 3/8", 90°	1
43	Motor, See Specifications Pages		
44	9.802-427.0	Cord, Electric, 12/3 SOWA (700.0, 701.0)	9.25 ft.
	9.802-436.0	Cord, Service, SEO, 10/3 Coleman (702.0)	9.25 ft.
	9.802-425.0	Cord, Service, SO, 8/3 Coleman (705.0, 708.0)	9.25 ft.
	9.802-437.0	Cord, Service, SEO 10/4 (703.0, 706.0, 709.0)	9.25 ft.
	9.802-426.0	Cord, Service, 8/4 (711.0)	9.25 ft.
	9.802-429.0	Cord, Service, 12/4 (704.0, 707.0, 710.0, 712.0, 713.0)	9.25 ft.
45	9.802-985.0	Panel, Side, Left	1
46	9.802-984.0	Panel, Top	1
47	9.800-030.0	Label, Operating Instructions	1
48	9.802-978.0	Panel, Rear	1
49	9.802-105.0	Plug, Plastic, 7/8"	1
50	9.802-794.0	Nut, Cage, 1/4" x 12 Gauge (705.0, 706.0, 707.0, 711.0, 712.0, 713.0) (700.0, 701.0, 702.0, 703.0, 704.0, 708.0, 709.0, 710.0)	40 38
51	9.802-484.0	Box, Junction 3 Hole, 3/4"	1
52	9.802-131.0	Elbow, 1/2" JIC x 1/2", 90° (705.0, 706.0, 707.0, 711.0, 712.0)	1
	9.802-132.0	Elbow, 3/4" JIC x 1/2", 90° (705.0, 706.0, 707.0, 711.0, 712.0, 713.0)	1
53	9.802-483.0	Cover Plate, Junction Box, 2" x 4"	1
	9.800-040.0	▲ Ground Label	1
55	9.802-257.0	Inlet Hose, 30", Water Supply	1
56	9.802-258.0	Inlet Hose, 45", Water Supply	1
57	9.802-043.0	Elbow, 1/2" JIC x 1/2" Female, 90°	1
58	9.802-128.0	Nipple, 1/2" JIC, 1/2" MPT Pipe (700.0, 701.0, 707.0) (703.0, 704.0, 708.0, 709.0, 710.0)	2 1
59	9.802-146.0	Swivel, 1/2" MP x 3/4" GHF, w/Strainer	1
60	9.800-020.0	Label, Cold Water Inlet	1
61	9.802-148.0	Adapter, 1/2" x 1/2" Pipe	1
62	9.802-067.0	Bumper Pad, Engine	18
63	9.802-066.0	Pad, Soft Rubber, 50 DURO	6
64	9.802-977.0	Assy, Frame	1
65	9.802-171.0	Nipple, 3/8" MPT x 3/8" NPT, Male	1
66	9.802-041.0	Elbow, 3/8" Steel, Street, 45°	1
67	9.802-871.0	Block, Discharge, Brass, 1/2" x 1/2"	1
68	9.802-192.0	Disk, Rupture Assy, 7000 PSI	1
69	9.802-156.0	Hose Barb, 1/2" Barb x 3/8" MPT, Push-On	1
70	9.802-285.0	Thermostat, Adjustable, 302°F	1
71	9.802-012.0	Nipple 1/2" Hex, Steel	1
72	9.802-259.0	Hose, 1/2" Push-On	3.33 ft.
73	9.802-976.0	Top, Burner Wrap, 20"	1
74	9.800-006.0	Label, Hot/Caliente w/Arrows Warning	2
75	8.930-140.0	Insulation, Tank Head, 20", 10" Opening	1
76	9.802-825.0	Clip, Retaining, U-Type	4
77	9.803-135.0	Coil, Dura, 20" Diameter, SCH. 80	1

EXPLODED VIEW PARTS LIST

ITEM	PART NO.	DESCRIPTION	QTY
78	9.802-974.0	Wrap, Outer Assy, 20" Coil	1
79	9.802-720.0	Bolt, 3/8" x 1", NC HH	8
80	9.802-989.0	Cover, Control Panel, Black	1
81	9.800-065.0	Label, Control Panel, Logo	1
	9.800-109.0	Label, Control Panel, Remote Logo	1
82	9.802-986.0	Panel, Side, Right	1
83	9.802-231.0	Hose, 1/4" x 36", 2 Wire, Gauge Hose (Steam Option)	1
84	9.802-793.0	Nut, Cage, 1/4" x 16 Gauge	4
85	9.802-045.0	Bushing, 1/2" x 3/8" Steel	1
86	9.800-021.0	Label, Hot Water Outlet	1
87	9.802-104.0	Bushing, 1" Snap	3
88	9.802-068.0	Plug, Rubber	3
89	9.802-065.0	Grommet, 1-5/16" Rubber	1
90	9.802-779.0	Nut, 3/8" ESNA (700.0, 701.0) (702.0, 703.0, 704.0, 705.0, 706.0, 707.0, 708.0, 709.0, 710.0, 711.0, 712.0, 713.0)	6 8
	9.802-776.0	Nut, 5/16" ESNA (700.0, 701.0)	4
91	9.802-720.0	Bolt, 3/8" (700.0, 701.0) (705.0, 706.0, 707.0, 711.0, 712.0) (702.0, 703.0, 704.0, 708.0, 709.0, 710.0)	6 5 8
	9.802-709.0	Bolt, 5/16" (700.0, 701.0)	4
92	9.800-016.0	Label, Disconnect Power Supply	1
93	9.802-741.0	Bolt, 8mm x 16mm Hex Head	4
94	9.802-813.0	Washer, 5/16" Lock Split Ring	4
95	9.802-804.0	Washer, 5/16" Flat	4
96	9.803-136.0	Retainer, Pump Take-Up (700.0)	8
97	9.802-807.0	Washer, 3/8" (700.0, 701.0) (702.0, 703.0, 704.0, 705.0, 706.0, 707.0, 708.0, 709.0, 710.0, 711.0, 712.0, 713.0)	12 16
	9.802-804.0	Washer, 5/16" (700.0, 701.0)	8
98	9.802-520.0	▲ Strain Relief, 3/4" (700.0, 702.0, 703.0, 704.0, 706.0, 707.0, 709.0, 710.0)	1
	9.802-522.0	▲ Strain Relief, 1" (705.0, 708.0, 711.0, 712.0, 713.0)	1
99	9.802-112.0	Elbow, 3/8" Female	1
100	9.802-047.0	Adapter, 1/2" x 1/2" Pipe STL	1
101	9.800-020.0	Label, Cold Water Inlet	1
102	9.802-753.0	Screw, 1/2" x 3/4" HH NC Whiz Loc	12
103	10-99032	Label, Pilot Light Hole	1
104	10-02020	Label, Burner Instructions	1
105	10-99077	Label, Pilot Light Warning	1
106	9.802-727.0	Bolt, 3/8" x 1-1/34" Tap (705.0, 706.0, 707.0, 711.0, 712.0, 713.0)	3
107	8.930-335.0	Cover, Outer Heat Shield (705.0, 706.0, 707.0, 711.0, 712.0, 713.0)	1
108	8.930-190.0	Shield, Heat, NG (705.0, 706.0, 707.0, 711.0, 712.0, 713.0)	1
109	8.719-940.0	Retainer Ring, Insulation	1

▲ Not Shown

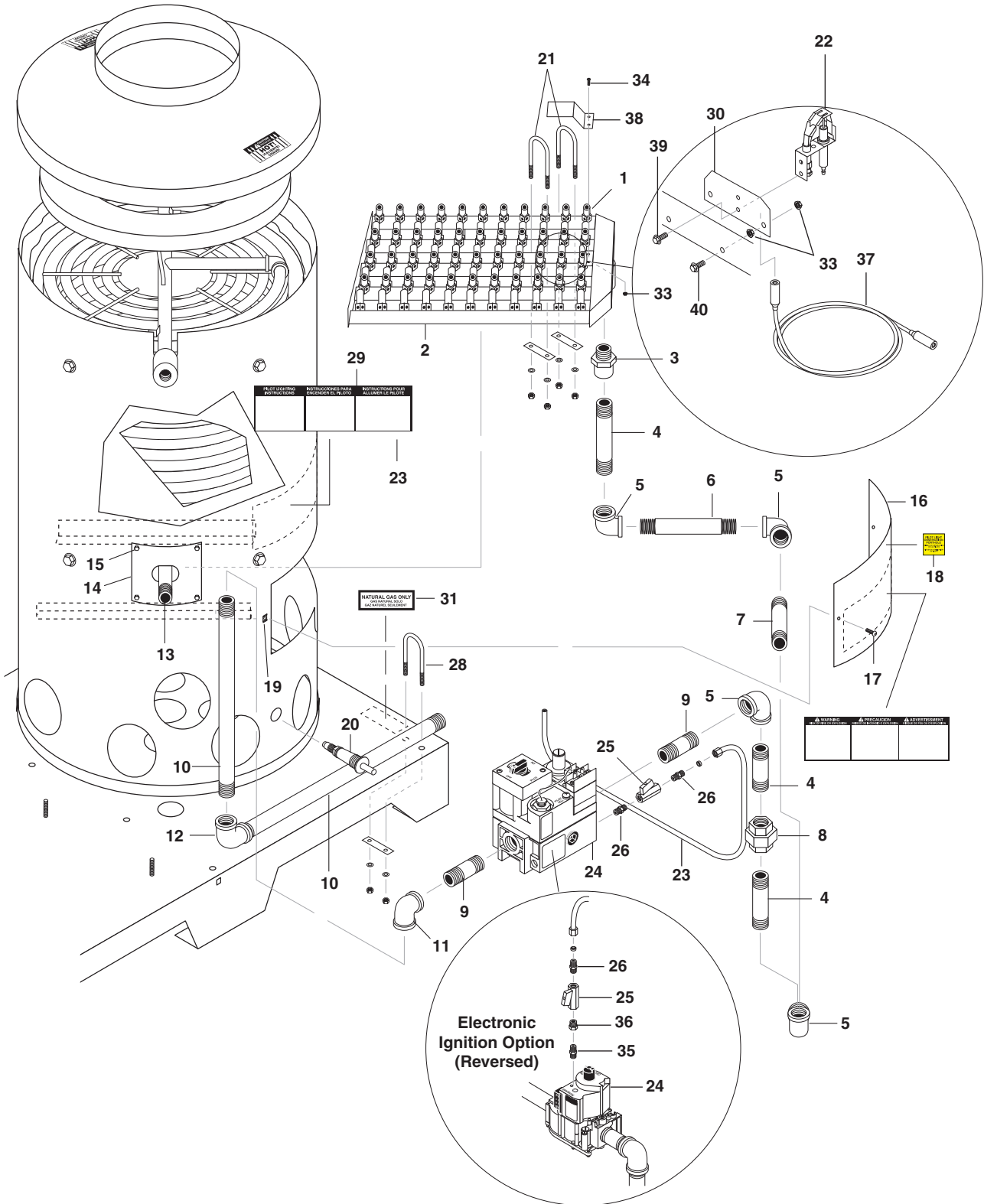
FLOAT TANK ASSEMBLY



FLOAT TANK PARTS LIST

ITEM	PART NO.	DESCRIPTION	QTY
1	9.800-045.0	Label, Stripe 17"	1
2	9.802-050.0	Adapter, 3/4" x 3/4" MT x Insert, 90°	1
3	9.802-052.0	Bulkhead, 3/4" Polypropylene	1
4	9.802-084.0	Tank, Plastic Universal Float	1
5	9.802-106.0	Plug, Float Tank	1
6	9.802-131.0	Elbow, 1/2" JIC x 1/2", 90°	1
	9.802-115.0	Elbow, 1/2" Street (700.0)	1
	9.803-300.0	Nipple, Modified Close, 3/16	1
7	9.802-150.0	Connector, 1/2" Anchor	1
8	9.802-162.0	Strainer, 1/2" Basket	1
9	9.802-185.0	Valve, Float Tank, Vertical	2
10	9.802-261.0	Hose, 3/4" Push-On	2 ft.
11	9.802-131.0	Elbow, 1/2" JIC x 1/2" (700.0, 701.0, 702.0, 703.0, 704.0, 705.0, 706.0, 707.0, 708.0, 709.0, 710.0)	1
	9.802-132.0	Elbow, 3/4" JIC x 1/2" MPT	1

BURNER ASSEMBLY



BURNER ASSEMBLY PARTS LIST

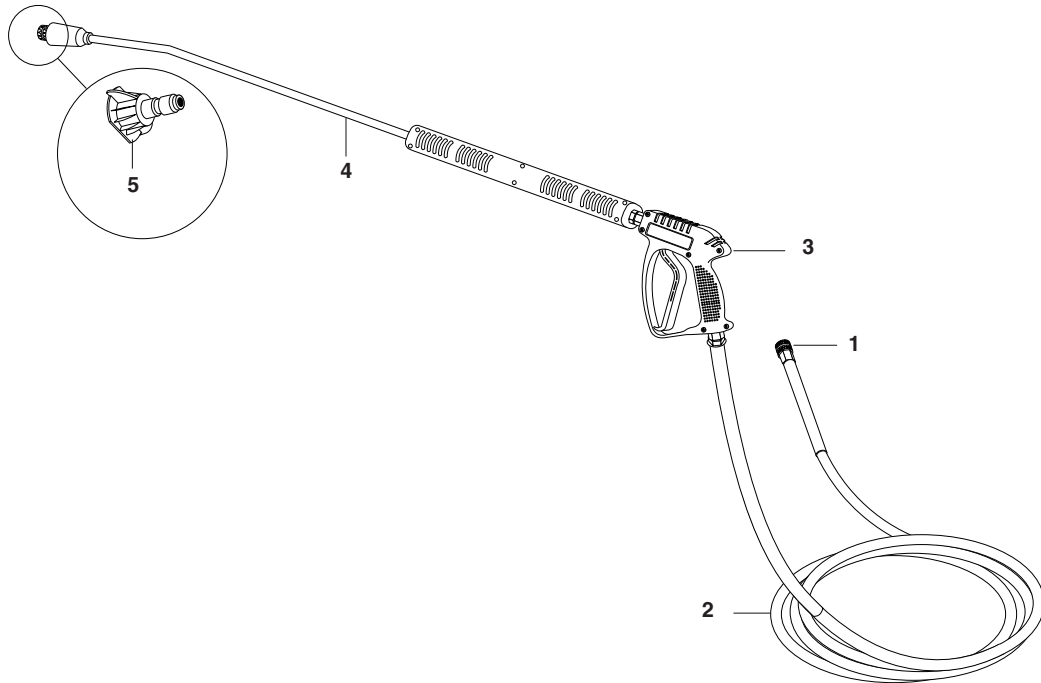
ITEM	PART NO.	DESCRIPTION	QTY
1	9.803-830.0	Jet, Orifice, #54 Natural Gas	44
	9.802-684.0	Jet, Orifice, #69	2
2	9.803.829.0	Burner Assy, Square, Small #54	1
	9.803-828.0	Burner Ring, Small, Square, #65 Nozzles	1
3	9.802-016.0	Bushing, 1" x 3/4", Black, Steel Hex	1
4	9.802-018.0	Nipple, 3/4" x 3", Black Pipe	3
5	9.802-027.0	Elbow, 3/4", Black, 90°	4
6	9.802-020.0	Nipple, 3/4" x 6", Black Pipe	1
7	9.802-019.0	Nipple, 3/4" x 2", Black	1
8	9.802-049.0	Union, 3/4", Black Pipe	1
9	9.802-017.0	Nipple, 3/4" x Close, Black	1
10	9.802-971.0	Nipple, 1" NPT x 15", Black, SCH. 40	2
11	9.802-028.0	Elbow, 1" x 3/4", Reducing, Black	1
12	9.802-026.0	Elbow, 1", Black, 90°	1
13	9.802-014.0	Nipple, 1/2" x 3", Galvanized SCH. 80	1
14	9.803-132.0	PHW/VNG Insulation Retainer Plate	1
15	9.802-798.0	Screw, #10 x 1/2", TEK	4
16	9.802-975.0	Cover, Burner Access, 20" Coil	1
17	9.802-764.0	Screw, 10/32" x 3/4", Hex Wash SL Mach/Blk	2
18	9.800-028.0	Label, Pilot Light Hole	1
19	9.802-791.0	Nut, Cage, 10/32" x 16 Gauge	2
20	9.802-678.0	Ignitor, Piezo #1244-42	1
	9.802-679.0	Washer, Panel Adapter, Piezo 1244-26	1
21	9.802-719.0	U-Bolt, 5/16" x 3", Pipe	2
22	9.803-617.0	Pilot, Natural Gas Pilot A3-S, #77623 (Millivolt)	1
	9.803-610.0	Pilot, Ignitor (Electric Ignition)	1
	9.803-611.0	Thermopile, 47"	1
23	9.802-911.0	Tubing, Aluminum, 600/RI, 1/4" Dead Soft (Elec.) (Millivolt)	36" 25"
24	9.803-615.0	Valve, Gas VS820A (Millivolt)	1
	9.803-616.0	Valve, Gas VR8304 (Electronic Ignition)	1
25	9.802-178.0	Valve, Ball, 1/4" Female x 1/4" Female, UL #12	1
26	9.802-159.0	Connector, 1/4" Tube x 1/4" MPT (Millivolt) (Electric Ignition)	2 1
27	9.802-972.0	▲ Splash Guard	1
28	9.802-718.0	U-Bolt, 5/16" x 1", Pipe	1
29	9.800-031.0	Label, Pilot Light Warning	1
30	9.803-304.0	Bracket, Pilot	1
31	9.800-005.0	Label, Natural Gas	1
32	9.803-516.0	Nipple, 3/4" x 5" Black Pipe	2
33	9.802-695.0	Nut, 10/32" Keps	6
34	9.802-759.0	Screw, 10/32" x 3/4" Hex	2
35	9.803-563.0	Connector, 1/4" Tube x 1/8" MPT (Elec. Ign.)	1

BURNER ASSEMBLY PARTS LIST

ITEM	PART NO.	DESCRIPTION	QTY
36	9.803-564.0	Bushing, 1/4" x 1/8" Pipe (Electric Ignition)	1
37	8.905-681.0	Ignition Cable 60" (Electric Ignition)	1
38	9.802-972.0	Splash Guard, Pilot Light	1
39	9.802-772.0	Screw, 10/32" x 3/4" Hex	1
40	9.802-764.0	Screw, 10/32" x 3/4" Hex	2

▲ Not Shown

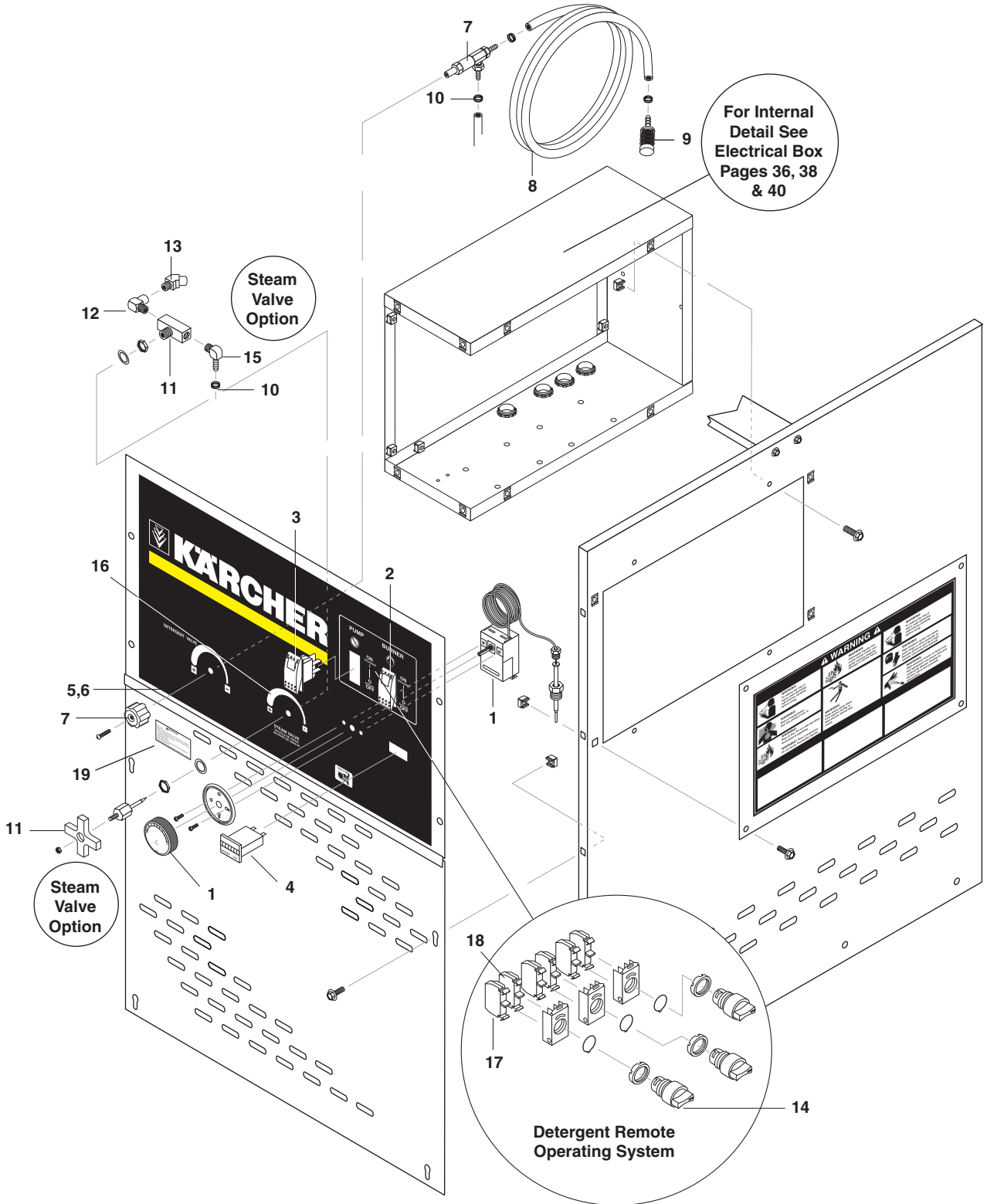
HOSE & SPRAY GUN ASSEMBLY



HOSE & SPRAY GUN PARTS LIST

ITEM	PART NO.	DESCRIPTION	QTY
1	9.802-166.0	Coupler, 3/8" Female	1
2	8.739-125.0	Hose 3/8" x 50', 1 Wire Tuff-Flex	1
3	9.802-229.0	Spray Gun, Shut-Off AP-1000	1
4	9.311-034.0	Lance, Spray, Insulated	1
5	9.802-303.0	Nozzle, 0005.5, Red (700.0, 702.0, 703.0, 704.0, 711.0, 712.0, 713.0)	1
	9.802-304.0	Nozzle, 1505.5, Yellow (700.0, 702.0, 703.0, 704.0, 711.0, 712.0, 713.0)	1
	9.802-305.0	Nozzle, 2505.5, Green (700.0, 702.0, 703.0, 704.0, 711.0, 712.0, 713.0)	1
	9.802-306.0	Nozzle, 4005.5, White (700.0, 702.0, 703.0, 704.0, 711.0, 712.0, 713.0)	1
	9.802-299.0	Nozzle, 0005, Red (701.0)	1
	9.802-300.0	Nozzle, 1505, Yellow (701.0)	1
	9.802-301.0	Nozzle, 2505, Green (701.0)	1
	9.802-302.0	Nozzle, 4005, White (701.0)	1
	9.803-800.0	Nozzle, 0007, Red (705.0, 706.0)	1
	9.803-801.0	Nozzle, 0507, Yellow (705.0, 706.0)	1
	9.803-802.0	Nozzle, 2507, Green (705.0, 706.0)	1
	9.803-803.0	Nozzle, 4007, White (705.0, 706.0)	1
	9.803-295.0	Nozzle, 0004, Red (708.0, 709.0, 710.0)	1
	9.803-296.0	Nozzle, 1504, Yellow (708.0, 709.0, 710.0)	1
	9.803-297.0	Nozzle, 2504, Green (708.0, 709.0, 710.0)	1
	9.803-298.0	Nozzle, 4004, White (708.0, 709.0, 710.0)	1

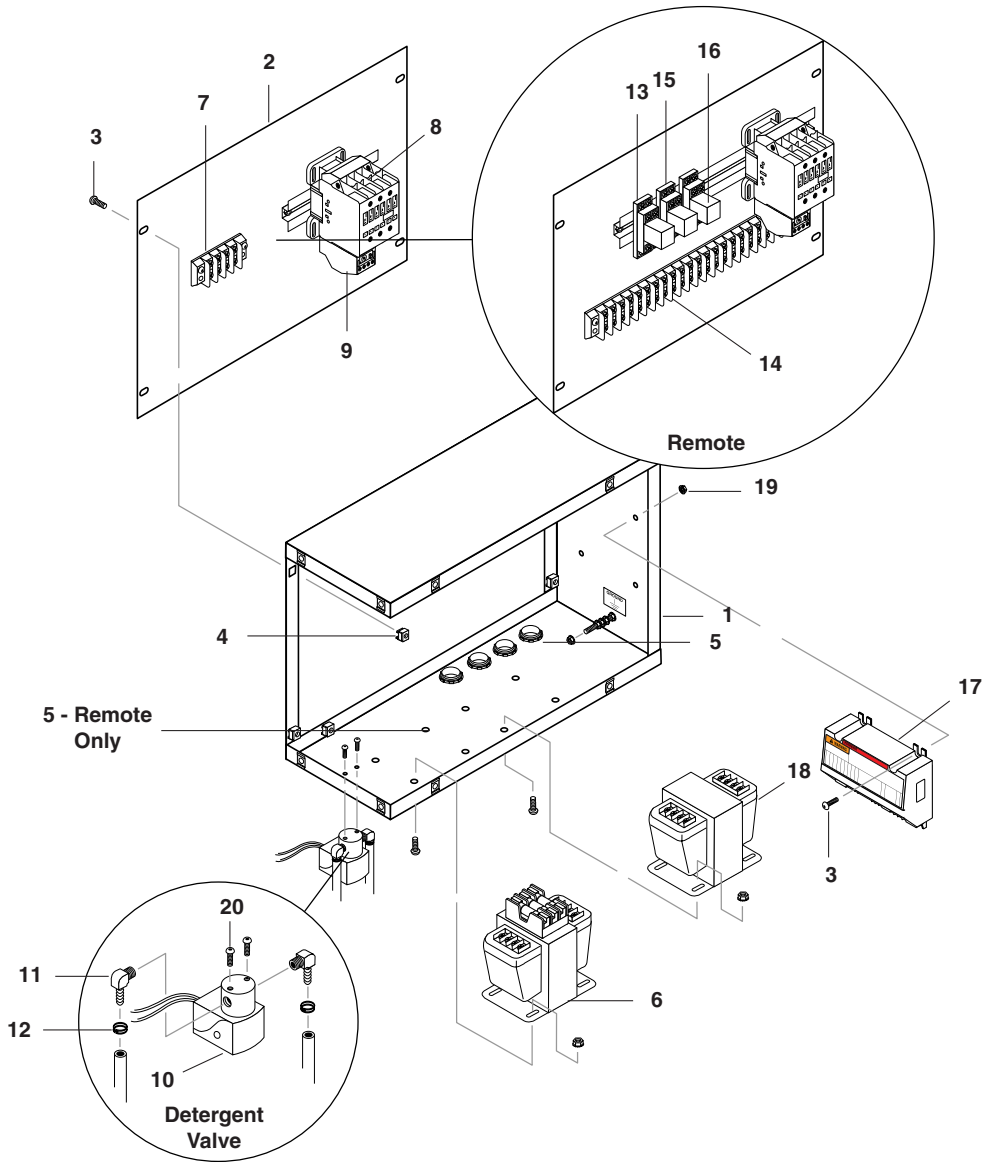
CONTROL PANEL EXPLODED VIEW



CONTROL PANEL PARTS LIST

ITEM	PART NO.	DESCRIPTION	QTY
1	9.802-285.0	Thermostat, Adjustable	1
2	9.802-451.0	Switch, Rocker, Carling w/Green Lens	2
3	9.802-452.0	Switch, Rocker, Carling Red Actuator (Time Delay)	1
4	9.802-283.0	Hour Meter, HOBBS	1
5	9.802-064.0	Grommet, Rubber, Nozzle Holder	4
6		Nozzle (See Hose and Spray Gun Assembly)	1
7	9.802-188.0	Valve, Metering, 1/4" Hose	1
8	9.802-251.0	Tube, 1/4" x 1/2", Clear Vinyl	10 ft.
9	9.802-161.0	Strainer, 1/4" w/Check Valve	1
10	9.802-210.0	Clamp, Hose, UNI .46 - .54	3
11	9.802-187.0	Valve, Flow Control/Metering (Steam Option)	1
12	9.802-029.0	Elbow, 1/4" Street, (Steam Option)	1
13	9.802-031.0	Elbow, 45°, 1/4" Street (Steam Option)	1
14	9.802-536.0	Switch, Selector, w/Red Lever	3
15	9.802-143.0	Hose Barb, 1/4" Barb x 1/4" Pipe, 90° (Steam Option)	1
16	9.800-029.0	Label, Steam Valve (Steam Option)	3
17	9.802-534.0	Block, Contact, N/C	3
18	9.802-535.0	Block, Contact, N/O	3
19	9.800-049.0	Label, Manufacturer's Cleaning Solution	1

STANDARD ELECTRICAL BOX EXPLODED VIEW & PARTS LIST



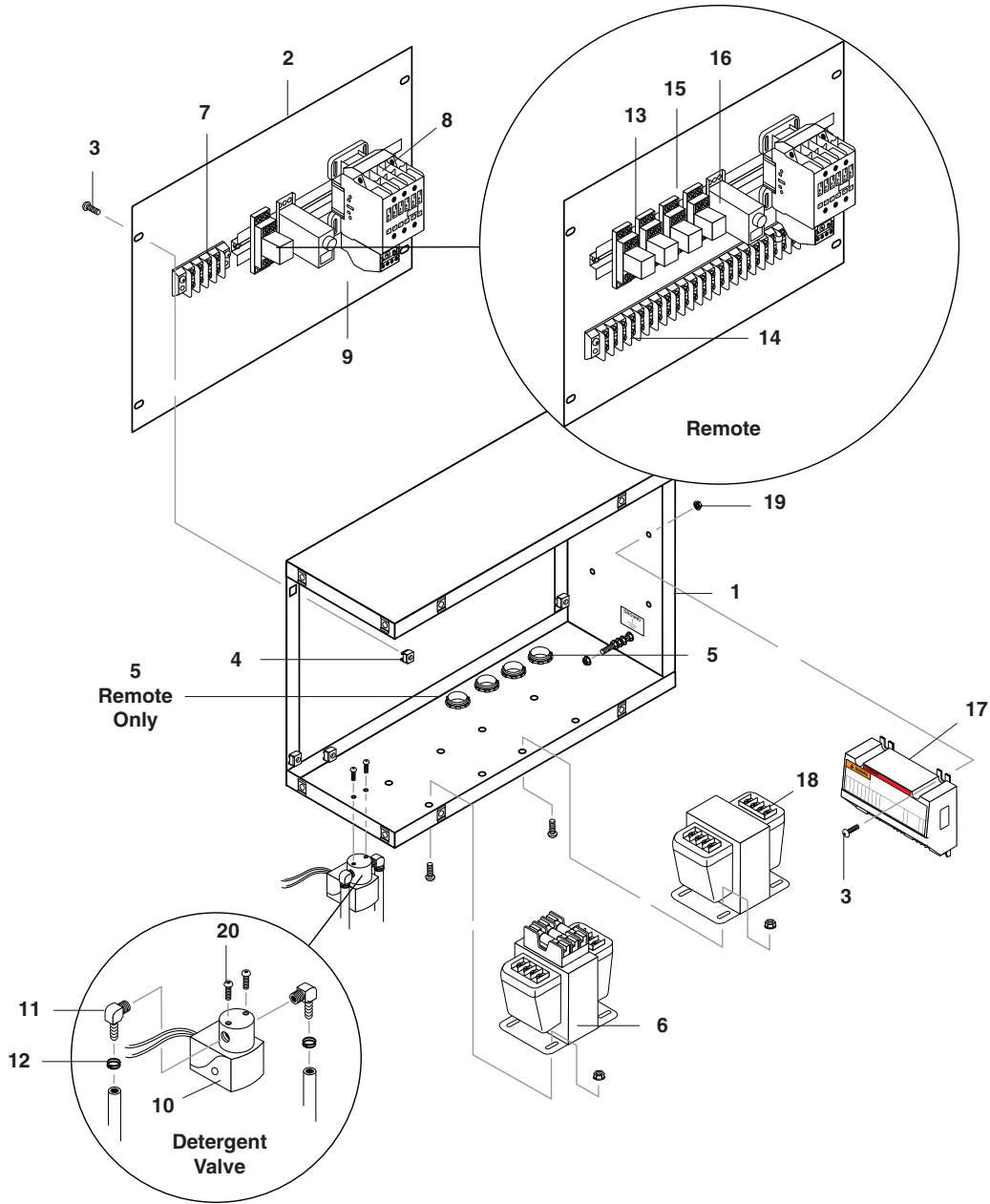
ITEM	PART NO.	DESCRIPTION	QTY
1	9.802-969.0	Box, Electrical	1
2	9.802-970.0	Panel, Electrical Box Side	1
	9.800-040.0	▲ Ground Label	1
3	9.802-759.0	Screw, 10/32" x 1/2" BHSOC Black	16
4	9.802-791.0	Nut, Cage, 10/32" x 16 Gauge	4
5	9.802-520.0	Strain Relief, 3/4" (Remote Option)	3 1
6	Fuse, See Specifications Pages		
7	9.802-491.0	Block, Terminal, 4 Pole	1
8	Contactor, See Specifications Pages		
9	Overload, See Specifications Pages		
10	9.802-532.0	Valve, Detergent Less Solenoid (Remote)	1
	9.802-533.0	Solenoid Coil, 120V (Remote)	1
11	9.802-143.0	Hose Barb, 1/4" Barb x 1/4" Pipe, 90° (Remote)	2

STANDARD ELECTRICAL BOX PARTS LIST

ITEM	PART NO.	DESCRIPTION	QTY
12	9.802-200.0	Clamp, Screw, #4 (Remote)	2
13	9.802-457.0	Din Rail, 35 mm (Remote)	4" 8"
14	9.802-493.0	Block Terminal, 16 Pole (Remote)	1
15	9.802-467.0	Base, Relay, SH2B-05, IDEC (Remote)	3
16	9.802-468.0	Relay, 120V, RH2B-UL-AC120 (Remote)	3
17	9.803-613.0	Ignition, Electronic Control	1
18	9.802-553.0	Transformer, Micron, 120/240V-24V,.050KVA, Electronic Ignition	1
19	9.802-695.0	Nut, 10/32", Keps	17
20	9.802-772.0	Screw 10/32" x 1/4" (Remote)	2

▲ Not Shown

TIME DELAY ELECTRICAL BOX EXPLODED VIEW

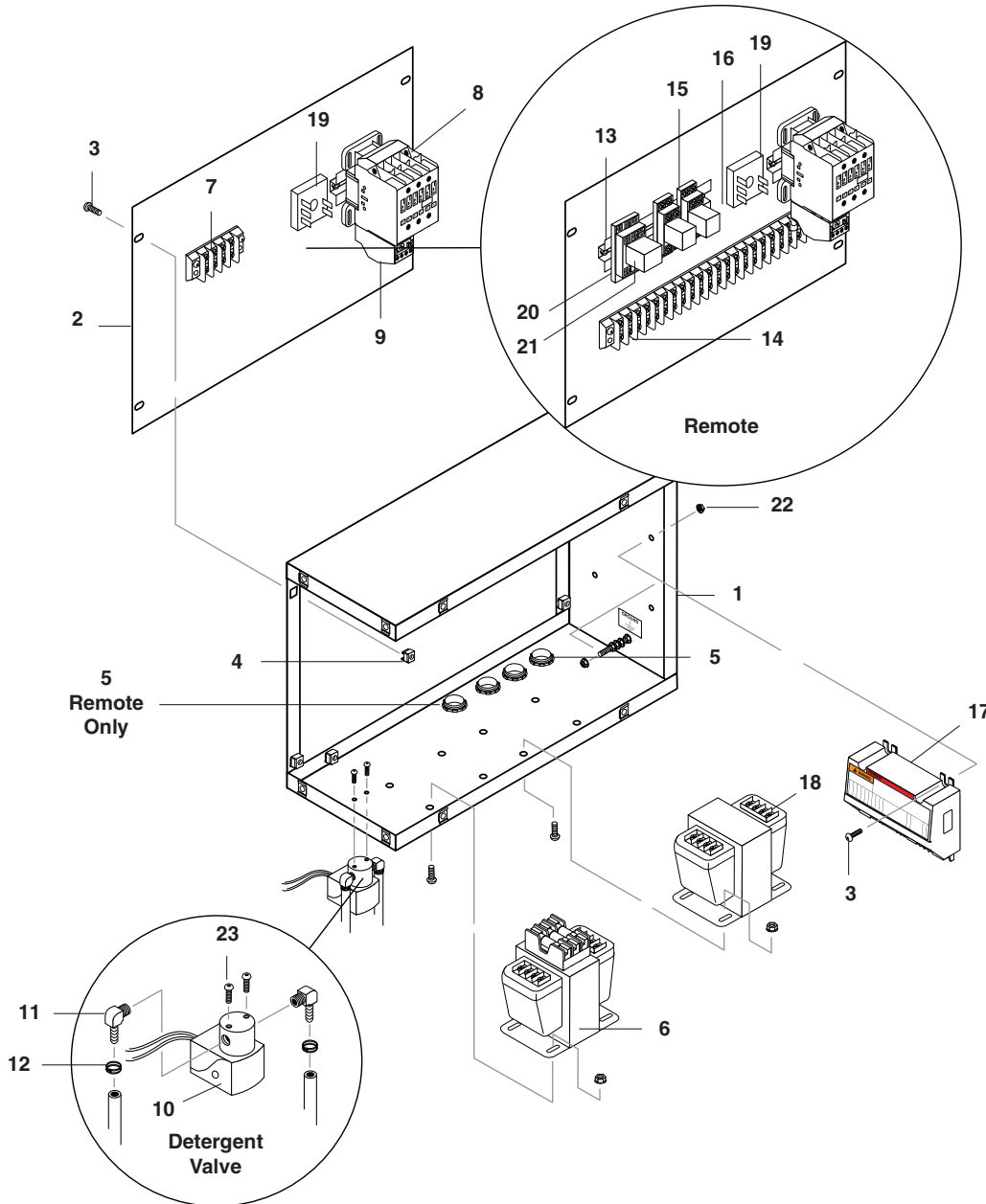


TIME DELAY ELECTRICAL BOX PARTS LIST

ITEM	PART NO.	DESCRIPTION	QTY
1	9.802-969.0	Box, Electrical	1
2	9.802-970.0	Panel, Electrical Box Side	1
	9.800-040.0	▲ Ground Label	1
3	9.802-759.0	Screw, 10/32" x 1/2" BHSOC Black	20
4	9.802-791.0	Nut, Cage, 10/32" x 16 Gauge	4
5	9.802-520.0	Strain Relief, 3/4" (Remote Option)	3 1
6	Fuses, See Specifications Pages		
7	9.802-491.0	Block, Terminal, 4 Pole	1
8	Contactor, See Specifications Pages		
9	Overload, See Specifications Pages		
10	9.802-532.0	Valve, Deter. Less Solenoid (Remote)	1
	9.802-533.0	Solenoid Coil, 120V (Remote)	1
11	9.802-143.0	Hose Barb, 1/4" Barb x 1/4" Pipe, 90° (Remote)	2
12	9.802-200.0	Clamp, Screw, #4 (Remote)	2
13	9.802-457.0	Din Rail, 35 mm (Remote)	4" 8"
14	9.802-493.0	Block Terminal, 16 Pole (Remote)	1
15	9.802-467.0	Base, Relay, SH2B-05, IDEC (Remote)	3
16	9.802-468.0	Relay, 120V, RH2B-UL-AC120 (Remote)	3
17	9.803-613.0	Ignition, Electronic Control	1
18	9.802-553.0	Transformer, Micron, 120/240V-24V, .050 KVA, Electronic Ignition	1
19	9.802-695.0	Nut, 10/32", Keps	17
20	9.802-772.0	Screw 10/32" x 1/4" (Remote)	2

▲ Not Shown

AUTO START ELECTRICAL BOX EXPLODED VIEW



AUTO START ELECTRICAL BOX EXPLODED VIEW

ITEM	PART NO.	DESCRIPTION	QTY
1	9.802-969.0	Box, Electrical	1
2	9.802-970.0	Panel, Electrical Box Side	1
	9.800-040.0	▲ Label, Ground	1
3	9.802-759.0	Screw, 10/32" x 1/2" BHSOC Black	20
4	9.802-791.0	Nut, Cage, 10/32" x 16 Gauge	4
5	9.802-520.0	Strain Relief, 3/4" (Remote)	3 1
6	Fuses, See Specifications Pages		
7	9.802-491.0	Block, Terminal, 4 Pole	1
8	Contactor, See Specifications Pages		
9	Overload, See Specifications Pages		
10	9.802-532.0	Valve, Deter. Less Solenoid (Remote)	1
	9.802-533.0	Solenoid Coil, 120V (Remote)	1
11	9.802-143.0	Hose Barb, 1/4" Barb x 1/4" Pipe, 90° (Remote)	2
12	9.802-200.0	Clamp, Hose, UNI .46 - .54 (Remote)	2
13	9.802-457.0	Din Rail, 35 mm (Remote)	4" 8"
14	9.802-493.0	Block Terminal, 16 Pole (Remote)	1
15	9.802-467.0	Base, Relay, SH2B-05, IDEC (Remote)	2
16	9.802-468.0	Relay, 120V, RH2B-UL-AC120 (Remote)	2
17	9.803-613.0	Ignition, Electronic Control	1
18	9.802-553.0	Transformer, Micron, 120/240V-24V, .050 KVA Electronic Ignition	1
19	9.802-472.0	Timer, Solid State 120V, 5-60 Min. (Auto Start)	1
20	9.802-466.0	Relay, Socket, IDEC (Remote)	1
21	9.802-469.0	Relay, Latch, IDEC (Remote)	1
22	9.802-695.0	Nut, 10/32", Keps	17
23	9.802-772.0	Screw, 10/32" X 1/4"	2

▲ Not Shown

SPECIFICATIONS

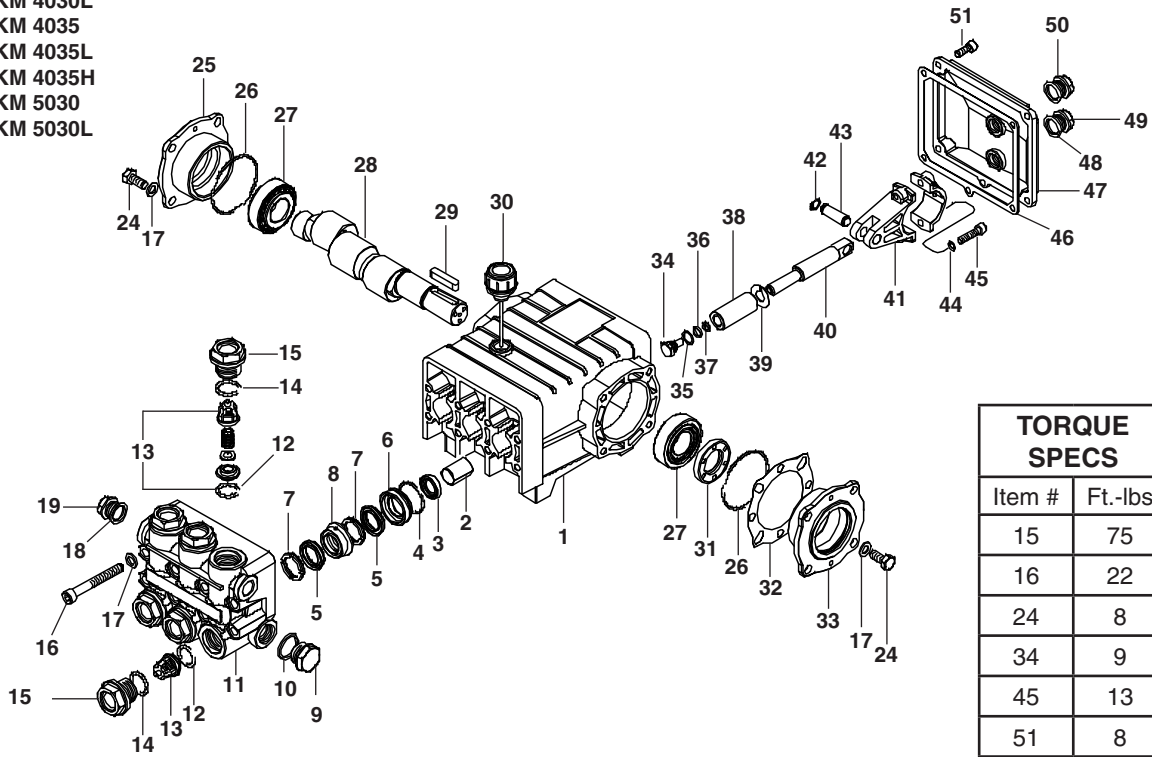
Model	PUMP						MOTOR					
	Pump Model	Pump #	Pulley	Pump Description	Bushing Pt#	Motor Pt#	HP	Voltage/ Hertz	Motor Pulley	Pulley Pt#	Motor Bushing	
1.575-700.0	KD3030	9.804-006.0	9.804-029.0	AK64H 24MM	9.802-402.0	9.802-339.0	2	120v 1ph/60Hz	AK28x5/8	9.804-028.0	NA	
1.575-701.0	KD4020	9.804-019.0	9.802-374.0	2AK74H 24MM	9.802-402.0	9.802-341.0	5	230v 1ph/60Hz	2AK30H	9.803-298.0	Hx3/4	
1.575-702.0	KM4035	9.802-343.0	9.802-374.0	2AK74H 24MM	9.802-402.0	9.802-336.0	6	230v 1ph/60Hz	2AK54H	9.802-372.0	Hx1-1/8	
1.575-703.0	KM4035	9.802-343.0	9.802-374.0	2AK74H 24MM	9.802-402.0	9.802-329.0	6	230V 3ph/60Hz	2AK54H	9.802-372.0	Hx1-1/8	
1.575-704.0	KM4035	9.802-343.0	9.802-374.0	2AK74H 24MM	9.802-402.0	9.802-329.0	6	460V 3ph/60Hz	2AK54H	9.802-372.0	Hx1-1/8	
1.575-705.0	KM5030	9.802-342.0	9.802-388.0	2BK67H 24MM	9.802-402.0	9.802-331.0	7.5	230v 1ph/60Hz	2BK60H	9.802-387.0	Hx1-3/8	
1.575-706.0	KM5030	9.802-342.0	9.802-388.0	2BK67H 24MM	9.802-402.0	9.802-334.0	7.5	230V 3ph/60Hz	2BK60H	9.802-387.0	Hx1-3/8	
1.575-707.0	KM5030	9.802-342.0	9.802-388.0	2BK67H 24MM	9.802-402.0	9.802-334.0	7.5	460V 3ph/60Hz	2BK60H	9.802-387.0	Hx1-3/8	
1.575-708.0	KM4035	9.802-343.0	9.802-388.0	2BK67H 24MM	9.802-402.0	9.802-331.0	7.5	230v 1ph/60Hz	2BK45H	9.802-385.0	Hx1-3/8	
1.575-709.0	KM4035	9.802-343.0	9.802-388.0	2BK67H 24MM	9.802-402.0	9.802-334.0	7.5	230V 3ph/60Hz	2BK45H	9.802-385.0	Hx1-3/8	
1.575-710.0	KM4035	9.802-343.0	9.802-388.0	2BK67H 24MM	9.802-402.0	9.802-334.0	7.5	460V 3ph/60Hz	2BK45H	9.802-385.0	Hx1-3/8	
1.575-711.0	KM5030	9.802-342.0	9.802-388.0	2BK67H 24MM	9.802-402.0	9.802-335.0	10	230V 3ph/60Hz	2BK57H	9.803-299.0	Hx1-3/8	
1.575-712.0	KM5030	9.802-342.0	9.802-388.0	2BK67H 24MM	9.802-402.0	9.802-335.0	10	460V 3ph/60Hz	2BK57H	9.803-299.0	Hx1-3/8	
1.575-713.0	KM5030	9.802-342.0	9.802-388.0	2BK67H 24MM	9.802-402.0	9.803-667.0	10	575V 3ph/60Hz	2BK57H	9.803-299.0	Hx1-3/8	

SPECIFICATIONS

	MOTOR					CONTROLS				
	Bushing PT#	Belts Size(Qty.)	Belt Pt#	Motor Contactor	Motor Overload	Trans- former	Primary Fuse	Primary Fuse Pt#	Secondary Fuse	Secondary Fuse Pt#
700.0	NA	AX31 (1)	9.804-026.0	8.724-268.0	N/A	N/A	N/A	N/A	N/A	N/A
701.0	9.802-398.0	AX33 (2)	9.802-407.0	8.724-276.0	N/A	9.802-552.0	1 AMP	9.802-461.0	8/10	9.802-464.0
702.0	9.802-400.0	AX36 (2)	9.802-408.0	8.724-276.0	N/A	9.802-552.0	1 AMP	9.802-461.0	8/10	9.802-464.0
703.0	9.802-400.0	AX36 (2)	9.802-408.0	8.724-268.0	8.724-304.0	9.802-552.0	1 AMP	9.802-461.0	8/10	9.802-464.0
704.0	9.802-400.0	AX36 (2)	9.802-408.0	8.724-268.0	8.724-312.0	9.802-552.0	1/2 AMP	9.802-462.0	8/10	9.802-464.0
705.0	9.802-401.0	BX36 (2)	9.802-416.0	8.724-281.0	8.724-306.0	9.802-552.0	1 AMP	9.802-461.0	8/10	9.802-464.0
706.0	9.802-401.0	BX36 (2)	9.802-416.0	8.724-272.0	8.724-305.0	9.802-552.0	1 AMP	9.802-461.0	8/10	9.802-464.0
707.0	9.802-401.0	BX36 (2)	9.802-416.0	8.724-268.0	8.724-312.0	9.802-552.0	1/2 AMP	9.802-462.0	8/10	9.802-464.0
708.0	9.802-401.0	BX34 (2)	9.802-414.0	8.724-276.0	8.724-306.0	9.802-552.0	1 AMP	9.802-461.0	8/10	9.802-464.0
709.0	9.802-401.0	BX34 (2)	9.802-414.0	8.724-272.0	8.724-305.0	9.802-552.0	1 AMP	9.802-461.0	8/10	9.802-464.0
710.0	9.802-401.0	BX34 (2)	9.802-414.0	8.724-268.0	8.724-312.0	9.802-552.0	1/2 AMP	9.802-462.0	8/10	9.802-464.0
711.0	9.802-401.0	BX36 (2)	9.802-416.0	8.724-281.0	8.724-305.0	9.802-552.0	1 AMP	9.802-461.0	8/10	9.802-464.0
712.0	9.802-401.0	BX36 (2)	9.802-416.0	8.724-272.0	8.724-304.0	9.802-552.0	1/2 AMP	9.802-462.0	8/10	9.802-464.0
713.0	9.802-401.0	BX36 (2)	9.802-416.0	8.724-272.0	8.724-312.0	9.803-668.0	1/2 AMP	9.802-462.0	8/10	9.802-464.0

KM SERIES PUMP EXPLODED VIEW

- 9.803-405.0 KM 4030
- 9.803-406.0 KM 4030L
- 9.802-343.0 KM 4035
- 9.803-407.0 KM 4035L
- 9.802-344.0 KM 4035H
- 9.802-342.0 KM 5030
- 9.803-408.0 KM 5030L



TORQUE SPECS	
Item #	Ft.-lbs
15	75
16	22
24	8
34	9
45	13
51	8

KM SERIES PUMP EXPLODED VIEW PARTS LIST

ITEM	PART NO.	DESCRIPTION	QTY	ITEM	PART NO.	DESCRIPTION	QTY
1	9.803-162.0	Crankcase	1	12*	9.803-191.0	O-Ring Ø2.62 x 17.13	6
2	9.803-196.0	Plunger Guide	3	13*	See Kits Below	Valve Assembly	6
3*	See Kits Below	Plunger Oil Seal	3	14*	9.803-193.0	O-Ring Ø2.62 x 20.29	6
4*	9.803-189.0	O-Ring Ø1.78 x 31,47	3	15	9.802-928.0	Valve Plug	6
5*	See Kits Below	"V" Seal (4035)	6	16	9.802-938.0	Manifold Stud Bolt	8
	See Kits Below	"V" Seal (4030, 5030)	6	17	9.802-884.0	Washer	16
6*	9.803-205.0	Pressure Ring 18mm (4035)	3	18	9.803-198.0	Copper Washer 3/8	1
	9.803-204.0	Pressure Ring 20mm (4030, 5030)	3	19	9.802-925.0	Brass Plug 3/8	1
7*	9.803-171.0	Support Ring 18mm (4035)	6	24	9.802-944.0	Hexagonal Screw	8
	9.803-172.0	Support Ring 20mm (4030, 5030)	6	25	9.803-180.0	Closed Bearing Housing	1
8*	9.803-174.0	Intermed. Ring 18mm (4035)	3	26	9.803-192.0	O-Ring Ø1.78 x 60.05	2
	9.803-173.0	Intermed. Ring 20mm (4030, 5030)	3	27	9.803-159.0	Tapered Roller Bearing	2
9	9.802-926.0	Brass Plug 1/2"	1	28	9-803-146.0	Crankshaft (5030)	1
10	9.803-199.0	Copper Washer 1/2"	1		9-803-142.0	Crankshaft (4030,4035/H)	1
11	9.802-932.0	Manifold Head	1	29	9.803-167.0	Crankshaft Key	1
				30	9.802-921.0	Oil Dip Stick	1
				31	9.803-140.0	Crankshaft Seal	1
				32	9.803-178.0	Shim	2
				33	9.803-179.0	Bearing Housing	1
				34*	9.802-936.0	Plunger Bolt	3

KM SERIES PUMP EXPLODED VIEW PARTS LIST

ITEM QTY	PART NO.	DESCRIPTION	
35*	9.802-885.0	Copper Spacer	3
36*	9.803-188.0	O-Ring Ø1.78 x 7.66	3
37*	9.803-155.0	Teflon Ring	3
38*	See Kits Below	Plunger (4035, 4035H)	3
	See Kits Below	Plunger (4030, 5030)	3
39*	9.802-888.0	Copper Spacer	3
40	9.803-144.0	Plunger Rod	3
41	9.803-158.0	Connecting Rod	3
42	9.802-913.0	Snap Ring	6
43	9.802-916.0	Connecting Rod Pin	3
44	9.803-218.0	Spring Washer	6
45	9.803-238.0	Connecting Rod Screw	6
46	9.803-185.0	Cover Gasket	1
47	9.803-165.0	Crankcase Cover	1
48	9.803-197.0	Gasket, G3/8	1
49	9.802-925.0	Brass Plug 3/8	1
50	9.803-201.0	Sight Glass G3/8	1
51	9.802-939.0	Cover Screw	5
52	8.730-836.0	▲ Bach Ring 1/2" (4035H)	3

* Available in kit (See below) ▲ Not Shown

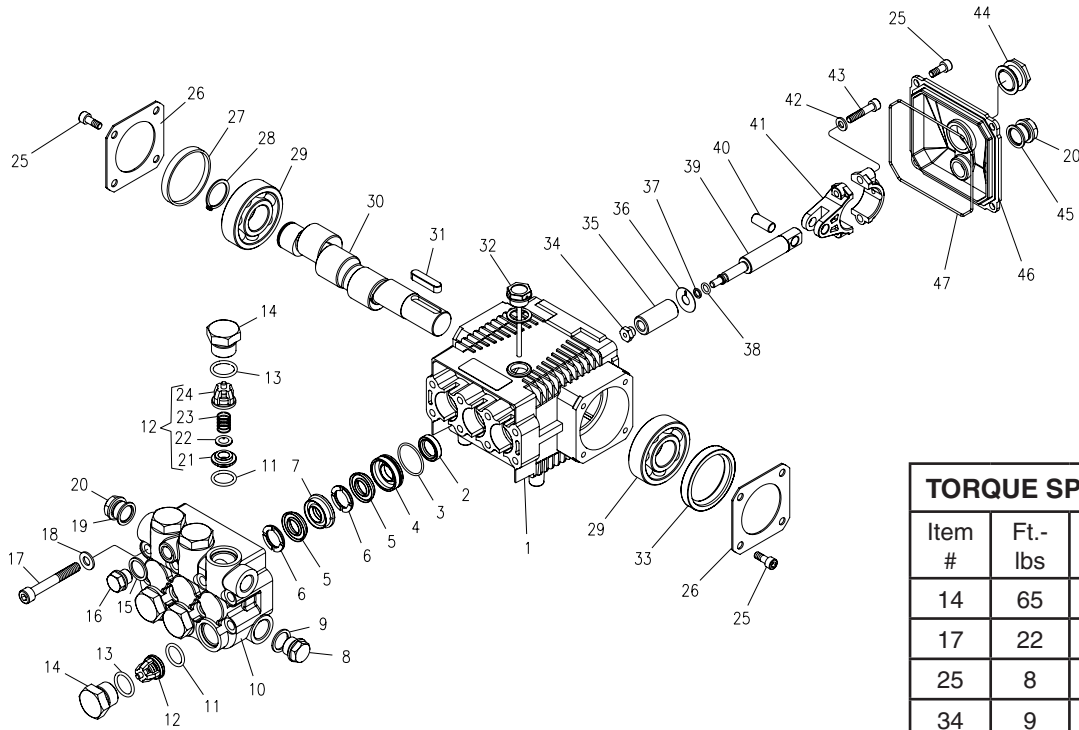
REPAIR KIT NUMBER	9.802-628.0	9.802-619.0	9.802-624.0	9.802-617.0	9.802-629.0	9.802-620.0	9.802-603.0	9.802-609.0
KIT DESCRIPTION	*Plunger Seal KM-4035	Plunger Seal KM-4030 KM-5030	**Complete Seal Packing KM-4035	Complete Seal Packing KM-4030 KM-5030	Plunger KM-4035 KM-4035H	Plunger KM-4030 KM-5030	Complete Valve	Plunger Oil Seals
ITEM NUMBERS INCLUDED	4, 5, 7	4, 5, 7	3, 4, 5, 6, 7, 8	3, 4, 5, 6, 7, 8	34, 35, 36, 37, 38, 39	34, 35, 36, 37, 38, 39	12, 13, 14	3
NUMBER OF CYLINDERS KIT WILL SERVICE	3	3	1	1	1	1	6	3

* For KM 4035H High Heat Packings, Use 9.802-626.0 **For KM 4035H High Heat Packings, Use 9.802-627.0

KD SERIES PUMP EXPLODED VIEW

9.803-825.0 KD 3030

9.803-827.0 KD 4020



TORQUE SPECS		
Item #	Ft.-lbs	Nm
14	65	8
17	22	30
25	8	11
34	9	12
43	13	17

KD SERIES PUMP EXPLODED VIEW PARTS LIST

ITEM	PART NO.	DESCRIPTION	QTY	ITEM	PART NO.	DESCRIPTION	QTY
1	9.803-938.0	Crankcase	1	11*	9.803-947.0	O-Ring Ø1.78 x 15.54	6
2*	See Kits Below	Plunger Oil Seal	3	12*	See Kits Below	Valve Assembly	6
3*	9.803-939.0	O-Ring Ø1.78 x 28.30	3	13*	9.803-948.0	O-Ring Ø2.62 x 18.77	6
4*	9.803-940.0	Pressure Ring 15mm (3030)	3	14	9.803-949.0	Valve Plug	6
	9.803-941.0	Pressure Ring 18mm (4020, 3025)	3	15	9.803-950.0	Copper Washer 1/4	1
5*	See Kits Below	"V" Seal, 15mm (3030)	6	16	9.803-951.0	Brass Plug G1/4	1
	See Kits Below	"V" Seal, 18mm (4020, 3025)	6	17	9.803-952.0	Manifold Stud Bolt	8
6*	9.803-942.0	Support Ring 15mm (3030)	6	18	9.802-884.0	Washer	8
	9.803-943.0	Support Ring 18mm (4020, 3025)	6	19	9.803-198.0	Copper Washer 3/8	1
7*	9.803-944.0	Intermed. Ring 15mm (3030)	3	20	9.802-925.0	Brass Plug 3/8	2
	9.803-945.0	Intermed. Ring 18mm (4020, 3025)	3	25	9.802-939.0	Screw	12
8	9.802-926.0	Brass Plug 1/2"	1	26	9.803-953.0	Bearing Cover	2
9	9.803-199.0	Copper Washer 1/2"	1	27	9.803-954.0	Bearing Seal	1
10	9.803-946.0	Manifold Housing	1	28	9.802-914.0	Snap Ring	1
				29	9.803-955.0	Ball Bearing	2
				30	9.803-956.0	Crankshaft	1
				31	9.803-167.0	Crankshaft Key	1
				32	9.803-957.0	Oil Dipstick	1

KD SERIES PUMP EXPLODED VIEW PARTS LIST

ITEM	PART NO.	DESCRIPTION	QTY
33	9.803-958.0	Crankshaft Seal	1
34*	9.803-959.0	Plunger Nut	3
35*	9.803-960.0	Plunger, 15mm (3030)	3
	9.803-961.0	Plunger, 18mm (4020, 3025)	3
36*	9.803-962.0	Copper Spacer	3
37*	9.803-963.0	O-Ring Ø1.78 x 5.28	3
38*	9.803-156.0	Teflon Ring	3
39*	9.803-964.0	Plunger Rod	3
40	9.803-965.0	Connecting Rod Pin	3
41	9.803-966.0	Connecting Rod	3
42	9.803-218.0	Spring Washer	6
43	9.803-967.0	Connecting Rod Screw	6
44	9.803-202.0	Sight Glass	1
45	9.803-197.0	Gasket	1
46	9.803-968.0	Crankcase Cover	1
47	9.803-969.0	O-Ring Ø2.62 x 107.62	

* Available in kit (See below)

REPAIR KIT NUMBER	9.803-930.0	9.803-931.0	9.803-932.0	9.803-933.0	9.803-934.0	9.803-935.0	9.803-936.0	9.803-937.0
KIT DESCRIPTION	*Plunger Seal 15mm KD-3030	Plunger Seal 18mm KD-3025 KD-4020	**Complete Seal Packing KD-3030	Complete Seal Packing KD-3025 KD-4020	Plunger 15mm KD-3030	Plunger 18mm KD-3025 KD4020	Complete Valve	Plunger Oil Seals
ITEM NO.'S INCLUDED	3, 5, 6	3, 5, 6	2, 3, 4, 5, 6, 7	2, 3, 4, 5, 6, 7,	34, 35, 36, 37, 38	34, 35, 36, 37, 38	11, 12, 13	2
NO. OF CYLINDERS KIT WILL SERVICE	3	3	1	1	1	1	6	3