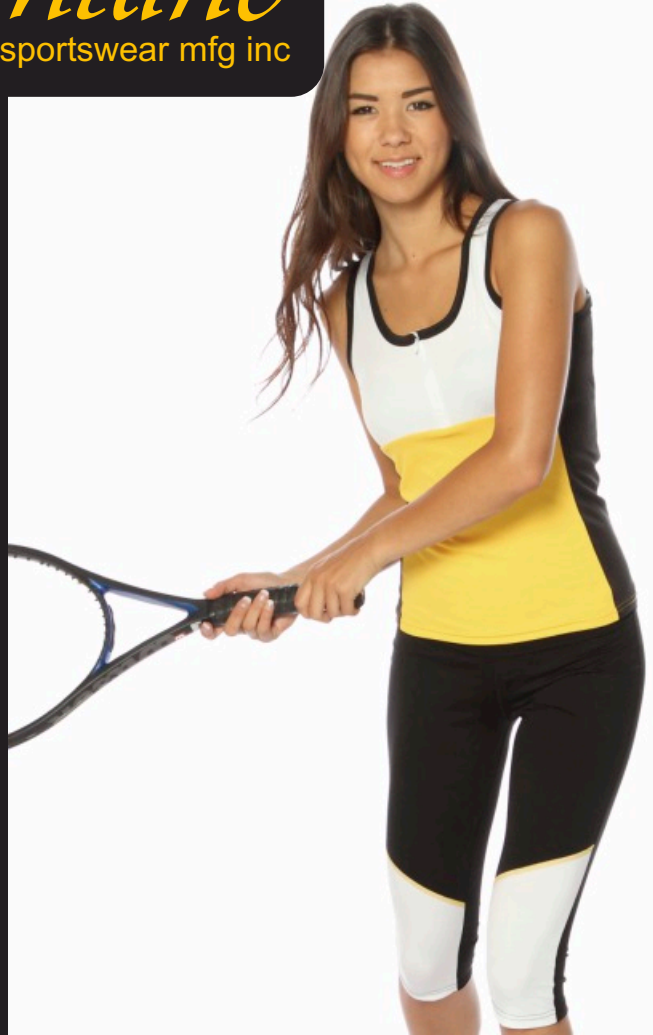




Brightline
est. 1980 sportswear mfg inc



ABOUT US

Since 1980, Brightline has made its name on providing uncompromised quality to the embellished activewear industry. We've built our reputation through our innovations in style and comfort. Our offerings include the following different categories to keep you looking good no matter what your activity is :

Restaurants & Bars

We have a variety of styles that cater to the restaurant sector. The Referee and Micropoly series, which feature styles in both men's and ladies', are designed with fit, fashion and fun. They are made with easy care fabrics that are durable and stay looking new. We have two matching bottoms for ladies: mini-skorts and shorts. We also feature styles with spandex fit that won't go out of shape and "hostess" styles made with our signature 100% combed cotton.

Performance Athletic Wear

Our "Ready to Print" Pro Cycling Jersey is ready to turn your corporate or recreational team into leaders of the pack with all the features of a pro jersey at an affordable price.

Our versatile and stylish micropoly activewear, complete with matching shorts and capris, are great for working out at the gym or jogging in the park.

For the ladies and girls, we have a line of durable and comfortable nylon/spandex tank tops, warmup hoodies and bottoms. These highly functional styles help you look good and feel cool in your favourite activity or sport.

Casual Comfort Poly/Rayon

Added in 2013, our poly/rayon fabric feels so good that it needs to be experienced. Soft, drapey, and lightweight...this fabric provides the ultimate comfort for everyday wear. 3 trend setting styles are now available for hanging out with your buddies in the mall or relaxing at home. Whether it's made fitted, relaxed, or oversized, these tops are sure to become a favourite "go to" tee.

Silky Touch Cotton Activewear

We offer a collection of styles that are versatile for many activities. Our collegiate spiritwear is available in a variety of colors to match your team colors. We also carry other fashionable, figure flattering activewear in sizes small to plus 3 which are perfect for school or day to day wear. These styles are made with our trademark "Silky touch" interlock fabric with the following features:

- fabric weight is 10.8 ounce (6.5 ounce per sq yard/210 gsm)
- made from very fine 38 singles combined cotton
- has a smoother surface for detailed screenprinting and embroidery
- bio-washing produces a cleaner surface for embellishing garment
- a spandex feel that offers a long lasting great look

We would love to be the supplier you can count on to fulfill your customers' requirements. Please contact one of our distributors or call us directly.

TABLE OF CONTENTS

PERFORMANCE ATHLETIC WEAR

Cycling Wear - p. 3
CYCJ

Micropoly Activewear - p. 4 - 5
BSTK, BSRG, BSCL, BSHY

Spandex Performance Bottoms - p. 4
NSCA, NSSH

Warm Ups and Yoga - p. 6
NSSR, NYPT/NYPTc, NYCP, NHDY/NHDYc

CASUAL COMFORTS

Poly Rayon Fashion - p. 7
PRLC, PRLT, DOTWF

RESTAURANTS & BARS

Easy Care Micropoly - p. 8 - 10
Ladies' - HSVP, HSDP, HDVP, HV00
Men's - MPCT, MPOL, MPVN

Spandex Fit - p. 11
TKDS, TK12

Referee Server Series - p. 12 - 15
Ladies' - RDSL, RAWL, RPOL, RVLT,
RSPV, RLXV, RVLL
Men's - REFC, REFV, REFP

Matching Bottoms - p. 15
NSKT, NBST

Silky Touch Hostess Series - p. 16
HDST, H3DV, HBNT

SILKY TOUCH COTTON ACTIVEWEAR

Fun Activewear / Spiritwear - p. 17 - 18
CHRL, CHR5, VSTY, GTT1, SPHY, GSP0, GLCS

SIZING SPECIFICATIONS - p. 19

Look for this symbol for

 made in Canada

NEW Colors



New: XS size


On our most popular ladies' micropoly styles, we've now added XS to our stock. This includes RVLT, RAWL, HDVP in black, and HSVP in black.



Enhanced Color matching on sublimation printing



Have you ever tried to color match and subliminate a grey only to have it come out a green? We've solved that problem with our color charts with 8000 shades matched to our cycling jersey fabrics. Next time, let us subliminate your cycling jersey order in house. Provide us with your pantone colored logos; we'll give you a very close match! Call us for more details.

CYCJ - Ready to Print Pro Cycling Jersey  made in Canada

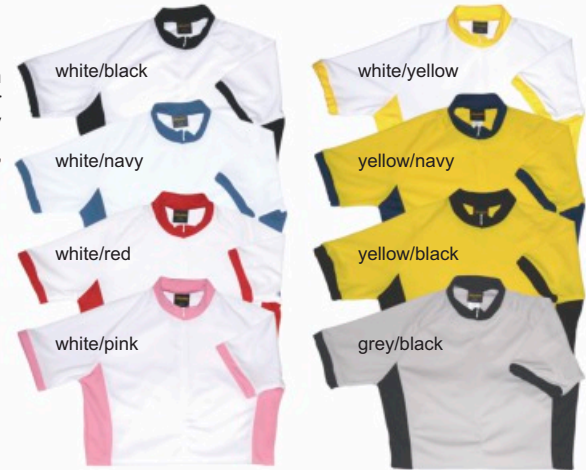
Brightline's unisex RTP cycling jersey is designed specifically for the corporate and recreational team wanting their own custom jerseys within a budget, tight deadline, and small minimums. Made with our Pro mesh that provides cooling and "stay fresh" properties, these garments are created with sporty contrast side panels, trim accents, and white body and sleeves to allow for sublimation printing. Designed with a pro jersey "club" fit, these garments feature raglan sleeves for better mobility, 14" invisible zipper for maximum ventilation, and 3 deep back elastic pockets capable of holding keys, phone, and other personal items. The sleeve cuffs and bottom hem are elasticized to keep the jersey in place.

Fabric: 100% Micropoly "Bird's Eye" Pro Mesh, 150gsm (4.5 oz/sq yd), wicking & antibacterial

Sizes: unisex XXS, XS, S, M, L, XL, XXL (semi-fitted)

Colors: white/black, white/navy, white/red, white/pink

NEW Colors: white/yellow, yellow/navy, yellow/black, grey/black



"Cycling is the New Golf."

- NY Times, Dec 2005
- Globe and Mail, June 2012
- Economist, April 2013

Sublimation Printing:

***Cycling Jerseys are sold blank. The samples below were decorated on finished garments using sublimation transfer printing. We can help you to sublimate your designs onto the jersey. Call us for more information.



Full Custom Printed Jerseys

Ask us about doing full custom printed jerseys. Brightline now offers full custom panel printed jerseys for minimums as low as 24 pieces. Create your design on our pre-set sizing template and produce a jersey to make you stand out in the crowd.



NEW! Micropoly "Active" Wear

All our micropoly activewear is made with our easy care micropoly interlock fabric that provides both wicking and antibacterial treatments to keep you cool and fresh.



A. BSTK - 1/4 Zip Fitness Tank Top made in Canada

Ladies' 1/4 zip tank top. Color contrast bottom with white top and black side panels. 4" invisible zipper. Neckline and armholes finished with 1/2" binding. 2-needle coverstitch bottom hem.

Fabric: 100% micro polyester interlock, 140 gsm / 4.25 oz/sq yd

Sizes: S, M, L, XL, +1 (XXL)

Colors: red, yellow, purple, blue, orange

B. NSCA - Ladies' Fitness Capris Tights made in Canada

Ladies' capris tights. Black with white lower front panels for possible sublimation decor. Color contrast thread to match our fitness tops. Flatlock seams for comfort and to reduce chafing. Separate self fabric waistband. 2-needle bottom hems.

Fabric: 90% nylon / 10% spandex Wicksoft jersey

Sizes: XS, S, M, L, XL

Colors: black w/ lower front white panels

Contrast flatlock seam: red, yellow, purple, blue, orange

C. BSRG - Relaxed Fit Raglan Vneck T made in Canada

Ladies' raglan sleeve Vneck T. Color contrast bottom & sleeves with white top and black side panels. Vneckline finished with 1/2" binding. 2-needle coverstitch sleeve & bottom hem.

Fabric: 100% micro polyester interlock, 140 gsm / 4.25 oz/sq yd

Sizes: S, M, L, XL, +1 (XXL)

Colors: purple, red, pink, orange, yellow



D. NSSH - Ladies' Fitted Shorts made in Canada

Ladies' fitted shorts. Black with white diagonal side panels for possible sublimation decor. Color contrast thread to match our fitness tops. Flatlock seams for comfort and to reduce chafing. Separate white contrast self fabric waistband. 2-needle bottom hems.

Fabric: 90% nylon / 10% spandex Wicksoft jersey

Sizes: XS, S, M, L, XL

Colors: black w/ white diagonal side panels

Contrast flatlock seam: purple, red, pink, orange, yellow



A. BSCL - Scoopneck Longsleeve T 🇨🇦 made in Canada

Ladies' scoopneck Longsleeve T. Relaxed fit. Color contrast bottom with white top and black side panels. Neckline finished with 1/2" binding. 2-needle coverstitch sleeves & bottom hem.

Fabric: 100% micro polyester interlock, 140 gsm / 4.25 oz/sq yd

Sizes: S, M, L, XL, +1 (XXL)

Colors: red, purple, blue, yellow, orange



For work or play...you decide how you want to wear it!



B. BSHY - Scoopneck Snap Henley T 🇨🇦 made in Canada

Ladies' scoopneck henley shortsleeve T. Relaxed fit. Color contrast bottom with white top and black side panels. Neckline finished with 1/2" binding. 4 button baby snaps henley placket. 2-needle coverstitch sleeves & bottom hem.

Fabric: 100% micro polyester interlock, 140 gsm / 4.25 oz/sq yd

Sizes: S, M, L, XL, +1 (XXL)

Colors: purple, yellow, orange, red, blue



Warm Ups and Yoga

Our performance wear are made with our Wicksoft jersey that draws moisture away from the body for cooler, quick dry comfort. Nylon/spandex construction ensures long lasting durability and shape retention.

A. NSSR - Racerback Spaghetti Strap Tank 🇨🇦 made in Canada
Ladies' yoga style racerback spaghetti strap tank top with built in self-bra. Wicking fabric draws moisture away from body for cooler, quick dry comfort. 1" elastic built into bra for support. 2-needle spaghetti strap binding, 2-needle coverstitch bottom hem.

Fabric: Tank top - 90% nylon / 10% spandex Wicksoft jersey
Built in bra - 100% polyester Wicksoft 1x1 rib

Sizes: S, M, L, XL, XXL

Colors: white, black, navy



B. NYPT - Ladies' Yoga Style Pants
C. NYCP - Ladies' Yoga Style Capris 🇨🇦 made in Canada

Ladies' yoga style pants and yoga style capris. 3" wide separate 4-piece tailored waistband for added "tummy" control. Hip hugging upper thighs, slight flared bottom. Single needle chainstitch finish at top of waistband, 3-needle top/bottom coverstitch finish around waistband seam.

Fabric: 90% nylon / 10% spandex Wicksoft jersey

Sizes: S, M, L, XL, XXL

Colors: white, black, navy

D. NHDYc - Girls' Fitted Full zip Hoody
E. NHDY - Ladies' Fitted Full zip Hoody 🇨🇦 made in Canada

Fitted full zip hoody w/ kangaroo pockets. 3-needle contrast thread top/bottom baby coverstitch along armhole seam, hood, pockets, sleeve & bottom hem.

Fabric: 90% nylon / 10% spandex Wicksoft jersey

Girl's: 6, YS, YM, YL

Ladies': S, M, L, XL, XXL

Colors: white, black, navy



F. NYPTc - Girls' Warm Up Pants 🇨🇦 made in Canada
Girl's warmup pants. 1½" elastic waistband. Slight flared bottom.

Fabric: 90% nylon / 10% spandex Wicksoft jersey

Sizes: 6, YS, YM, YL

Colors: White, Black, Navy



Oooh...So Soft & Comfy!

Experience Brightline's new polyester/rayon fabric.
Soft, drapey, and lightweight...

A. PRLC - Relaxed Fit Lace Up T made in Canada

Whether you're spending a day as a mall rat or heading to your BFF's for movie night, our relaxed fit lace up T will surely become a favorite "go to" top. Scoopneck with lace up keyhole neckline. Neckline finished with 3/8" binding. 8-hole lace up with self-fabric. 2-needle coverstitch sleeve and bottom hem.

Fabric: 65% Polyester, 35% Rayon Jersey, 135 gsm (4.0 oz/sq yd)

Sizes: S, M, L, XL

Colors: black, heather charcoal

Made to order colors: white, dark royal, kelly (min. 72 pcs/color)



A



B

B. PRLTT - Faux Button Up Long Tank Top made in Canada

Ladies' fitted extra long tank top with flowing bottom. Perfectly matched with your favorite tights or our NBST shorts. Front faux button up placket is accented with metallic snaps. Neckline and armholes finished with 1/2" binding. 2-needle coverstitch bottom hem.

Fabric: 65% Polyester, 35% Rayon Jersey, 135 gsm (4.0 oz/sq yd)

Sizes: S, M, L, XL

Colors: black, heather charcoal

Made to order colors: white, dark royal, kelly (min. 72 pcs/color)

C. DOTWF - Twofer Tie Up Dolman T made in Canada

Have fun with this casual, loose fitting top! Our new twofer tie up dolman is perfect for the backyard BBQ or other casual events. Front ties allow you to adjust the length of the top. Oversize dolman cut gives a loose, relax fit. Neckline finished with 3/4" contrast serged collar. 1/2" contrast sleeve cuffs serged on and coverstitched for a "twofer" look. Bottom and tie ups finished with raw edge serge.

Fabric: 65% Polyester, 35% Rayon Jersey, 135 gsm (4.0 oz/sq yd)

Sizes: S/M, L/XL

Colors: black/white, heather charcoal/white

Made to order colors: white, dark royal, kelly (min. 72 pcs/color)



C

Micropoly Server's Tees

Most servers want an easy care, color fast top that can be thrown in the wash and be dry to use the next day. Our micropoly tees are designed to fit that bill. Made with a 100% micropolyester interlock, similar to our referee jerseys, these tops provide wicking and antibacterial properties that will keep them cool and fresh throughout their shift.

- Features:
- Soft microfibre polyester fabric
 - Quick dry wicking
 - Anibacterial treatment to stay fresh
 - Easy care
 - Non-fade colorfastness
 - Lightweight 140gsm/4.25 oz/yd



A.



B.



A. HSVP - Deep Vneck T 🇨🇦 made in Canada
Ladies' capsleeve deep Vneck T. Longer mid-hip length. Deep Vneck line finished with 1/2" binding. 2-needle coverstitch sleeve & bottom hem.
Fabric: 100% micro polyester interlock, 140 gsm / 4.25 oz/sq yd
Sizes: S, M, L, XL, +1 (XXL)
Sizes: XS, +2 (3XL), +3 (4XL) in BLACK only
Colors: black, purple, orange, red, yellow, navy

B. HSDP - Deep Scoop T 🇨🇦 made in Canada
Ladies' capsleeve deep scoopneck T. Longer mid-hip length. Deep scoopneck line finished with 1/2" binding. 2-needle coverstitch sleeve & bottom hem.
Fabric: 100% micro polyester interlock, 140 gsm / 4.25 oz/sq yd
Sizes: S, M, L, XL, +1 (XXL)
Color: black



A. HDVP - 3/4 Length Sleeve Deep Vneck T  made in Canada

Ladies' 3/4 sleeve length deep Vneck T. Longer mid-hip length. Deep Vneck line finished with 1/2" binding. 2-needle coverstitch sleeve & bottom hem.

Fabric: 100% micro polyester interlock, 140 gsm / 4.25 oz/sq yd

Sizes: S, M, L, XL, +1 (XXL), +2 (3XL), +3 (4XL)

Sizes: XS in BLACK only

Colors: black, red, navy



B. HV00 - "Classic" Vneck T  made in Canada

Ladies' shortsleeve T with a high sweetheart vneck line. Longer mid-hip length. Neckline finished with 1/2" binding. 2-needle coverstitch sleeve & bottom hem.

Fabric: 100% micro polyester interlock, 140 gsm / 4.25 oz/sq yd

Sizes: S, M, L, XL, +1 (XXL)

Colors: black, red, orange, purple



Men's Micropoly Styles

Designed to be dressy enough as a server's shirt to impress even your most discerning guest, yet sporty enough for a night on the town. The fresh cooling effects of the micropoly fabric's wicking and antibacterial properties means you can head straight for the gym afterwards and get the same performance you'd expect from your workout gear.



A. MPCT - Men's Micropoly Crewneck T made in Canada

Men's shortsleeve crewneck T. Crewneck collar is serged on with 3/4" wide trim and finished with 2-needle coverstitch. Sleeve and bottom hem finished with 2-needle coverstitch.

Fabric: 100% micropoly interlock, 140 gsm (4.25 oz/sq yd)

Sizes: S, M, L, XL, XXL, 3XL, 4XL

Colors: white, black



B. MPOL - Men's Micropoly Buttonless Polo T made in Canada

Men's shortsleeve polo T. Self fabric johnny collar with buttonless placket. Sleeve and bottom hem finished with 2-needle coverstitch.

Fabric: 100% micropoly interlock, 140 gsm (4.25 oz/sq yd)

Sizes: S, M, L, XL, XXL, 3XL, 4XL

Color: black



C. MPVN - Men's Micropoly Vneck T made in Canada

Men's shortsleeve V neck T. Crossover V neck collar is serged on with 3/4" wide trim and finished with 2-needle coverstitch. Sleeve and bottom hem finished with 2-needle coverstitch.

Fabric: 100% micropoly interlock, 140 gsm (4.25 oz/sq yd)

Sizes: S, M, L, XL, XXL, 3XL, 4XL

Colors: white, black

Spandex Fit

Our spaghetti strap tank top and dress are designed with a figure hugging fit. The combed cotton combined with the spandex in the fabric ensures a soft feel and lasting shape retention.


A. TKDS - Spaghetti Strap Keyhole Dress (right) 🇨🇦 made in Canada
Ladies' spaghetti strap Vneck keyhole dress. 3/8" binding around collar and straps. Keyhole accent at bottom of front Vneck collar. Straps criss cross on back. Double needle bottom hem.
Fabric: 95% combed cotton / 5% spandex 1x1 rib, 260 gsm (7.6 oz/sq yd)
Sizes: S, M, L, XL
Color: black

B. TK12 - Spaghetti Strap Tank Top (below)
Ladies' spaghetti strap Vneck tank top. 3/8" binding around collar and straps. Straps criss cross on back. Double needle bottom hem.
Fabric: 95% combed cotton / 5% spandex 1x1 rib, 260 gsm (7.6 oz/sq yd)
Sizes: S, M, L, XL
Colors: white, black



Referee Tees

Made from micropoly quick dry fabric, these garments are sure to keep your staff cool and your customers entertained during the next big game. These styles are designed with fit, fashion, and "fun" in mind to cater to each server's taste. Features include:

- 100% microfibre polyester interlock
- antibacterial treatment
- quick dry "wicking" to keep the server cool
- 140 gsm (4.25 oz/sq yd)
- stripes are dye sublimated to feel like part of the fabric
- flattering necklines on ladies' styles
- easy care
- available in white with 1" wide black stripes
-  made in Canada

A. RDSL - Deep Scoop Referee Long T made in Canada

Ladies' capsleeve deep scoop collar longer length T. Longer mid-hip length. Neckline is finished with solid color 3/8" binding. 2-needle coverstitch sleeve and bottom hem.

Fabric: 100% micropoly referee striped interlock, 140 gsm (4.25 oz/sq yd)

Sizes: S, M, L, XL, +1 (XXL), +2 (3XL), +3 (4XL)

B. REFCm - Men's Crewneck Referee T made in Canada

Men's shortsleeve crewneck T. Crewneck collar is serged on with 3/4" wide trim and finished with 2-needle coverstitch. Sleeve and bottom hem finished with 2-needle coverstitch.

Fabric: 100% micropoly referee striped interlock, 140 gsm (4.25 oz/sq yd)

Sizes: S, M, L, XL, XXL, 3XL, 4XL

C. RAWL - Raw Edge Collar Referee T made in Canada

Ladies' shortsleeve raw edge collar longer length T. Longer mid-hip length. Neckline is finished with solid color 3/8" binding across the top and overlock serging around front raw edge opening. 2-needle coverstitch and bottom hem.

Fabric: 100% micropoly referee striped interlock, 140 gsm (4.25 oz/sq yd)

Sizes: XS, S, M, L, XL, +1 (XXL), +2 (3XL), +3 (4XL)





A.

A. RPOL - Uneck Polo Referee T  made in Canada

Ladies' shortsleeve longer length polo T. Longer mid-hip length. Black contrast johnny collar. Deep U-neck necklined finished with black 3/8" binding. 2-needle coverstitch sleeve and bottom hem.

Fabric: 100% micropoly referee striped interlock, 140 gsm (4.25 oz/sq yd)

Sizes: S, M, L, XL, +1 (XXL), +2 (3XL), +3 (4XL)

B. REFP - Men's Buttonless Polo Referee T  made in Canada
Men's shortsleeve polo T. Self fabric johnny collar with black contrast placket. Buttonless. Sleeve and bottom hem finished with 2-needle coverstitch.

Fabric: 100% micropoly referee striped interlock, 140 gsm (4.25 oz/sq yd)

Sizes: S, M, L, XL, XXL, 3XL, 4XL



B.

Brightline

A. RVLV - Vneck Referee Long T made in Canada

Ladies' capsleeve Vneck longer length T. Longer mid-hip length. Deep Vneck finished with solid color 1/2" binding. 2-needle coverstitch sleeve and bottom hem.

Fabric: 100% micropoly referee striped interlock, 140 gsm (4.25 oz/sq yd)

Sizes: XS, S, M, L, XL, +1 (XXL), +2 (3XL), +3 (4XL)

B. REFVm - Men's Vneck Referee T made in Canada

Men's shortsleeve V neck T. Crossover V neck collar is serged on with 3/4" wide trim and finished with 2-needle coverstitch. Sleeve and bottom hem finished with 2-needle coverstitch.

Fabric: 100% micropoly referee striped interlock, 140 gsm (4.25 oz/sq yd)

Sizes: S, M, L, XL, XXL, 3XL, 4XL

C. RLXV - Relaxed Fit "Classic" Vneck Referee T made in Canada

Ladies' shortsleeve Vneck longer length T. Relaxed cut with a high vneck line for those looking for a conservative fit. Longer mid-hip length. Neckline is finished with solid color 3/4" serged on binding. 2-needle coverstitch sleeve and bottom hem.

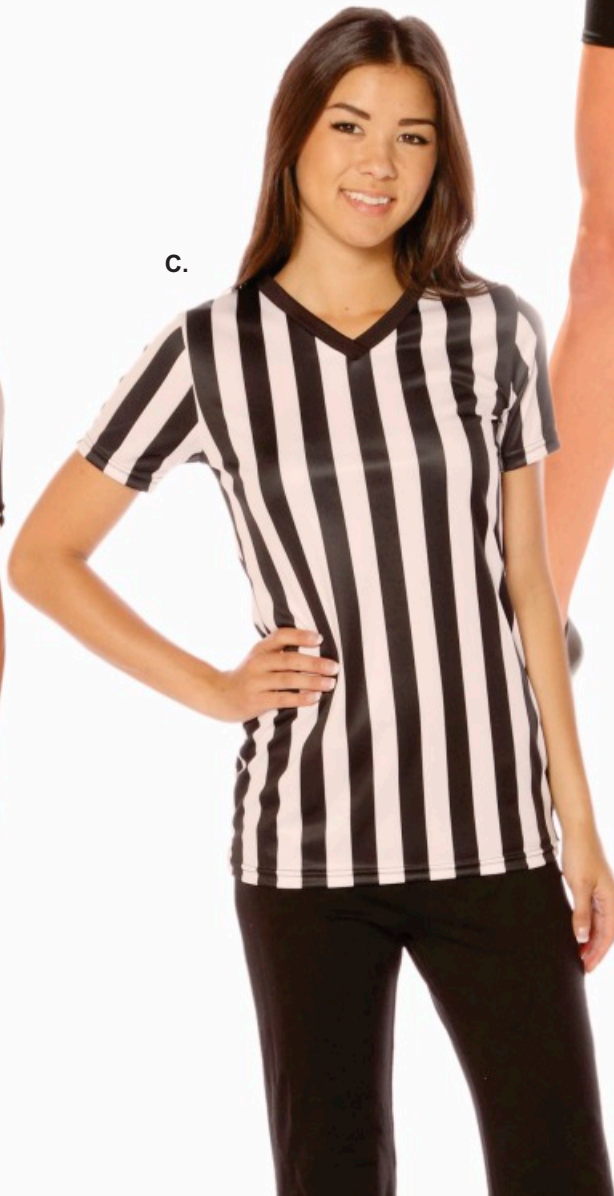
Fabric: 100% micropoly referee striped interlock, 140 gsm (4.25 oz/sq yd)

Sizes: S, M, L, XL, +1 (XXL), +2 (3XL), +3 (4XL)



B.

C.



A. RSPV - Sleeveless Vneck Referee T 🇨🇦 made in Canada

Ladies' Vneck sleeveless T. Crossover Vneck collar and armhole are set with 5/8" trim using overlock serging stitch. 2-needle coverstitch bottom hem.

Fabric: 100% micropoly referee striped interlock, 140 gsm (4.25 oz/sq yd)

Sizes: S, M, L, XL, +1 (XXL), +2 (3XL), +3 (4XL)

A.



B.

B. RVLL - Longsleeve Vneck Referee Long T 🇨🇦 made in Canada

Ladies' longsleeve deep Vneck collar longer length T. Longer mid-hip length. Neckline is finished with solid color 3/8" binding. 2-needle coverstitch sleeve and bottom hem.

Fabric: 100% micropoly referee striped interlock, 140 gsm (4.25 oz/sq yd)

Sizes: S, M, L, XL, +1 (XXL), +2 (3XL), +3 (4XL)



Matching Bottoms

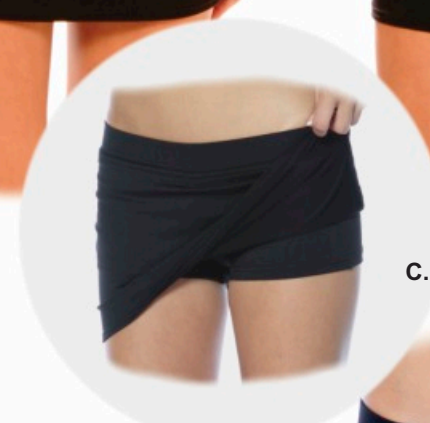
C. NSKT - Mini-Skort 🇨🇦 made in Canada

Now you can outfit your staff in short skirts and have them feel confident wearing it. Ladies' skorts with inside fitted shorts. Wicking fabric draws moisture away from body for cooler, quick dry comfort. Separate paneled 1 1/2" elastic waist band. 2-needle coverstitched waist seam and bottom hem.

Fabric: 90% nylon, 10% spandex Wicksoft jersey

Sizes: XS, S, M, L, XL

Color: black



C. NSKT - Mini-Skort

D. NBST - Referee Shorts 🇨🇦 made in Canada

90% nylon, 10% spandex Wicksoft jersey Referee "booty" shorts. Wicking fabric draws moisture away from body for cooler, quick dry comfort. Separate paneled 1 1/2" elastic waist band. 2-needle coverstitched waist seam and bottom hem.

Fabric: 90% nylon, 10% spandex Wicksoft jersey

Sizes: XXS, XS, S, M, L, XL

Color: black



D. NBST - Referee shorts



Silky Soft Comfort

Our 3 original "Hostess" styles made with our signature 100% combed cotton silky touch interlock. They are stylish, comfortable and come in a variety of colors.

A. HDST - Deep Scoop Long T

Ladies' shortsleeve deep scoopneck T. Longer mid-hip length. Deep scoop neckline and sleeve edge finished with 1/2" binding. 2-needle coverstitch bottom hem.

Fabric: 100% combed cotton "silky touch" interlock, 210gsm (6.5 oz/sq yd)

Sizes: S, M, L, XL, +1 (XXL), +2 (3XL), +3 (4XL)

Colors: white, navy, red

Colors: black 🇨🇦 made in Canada



B. H3DV - 3/4 Sleeve Deep Vneck Long T

Ladies' 3/4 sleeve length deep Vneck T. Longer mid-hip length. Deep Vneck line finished with 1/2" binding. 2-needle coverstitch sleeve & bottom hem.

Fabric: 100% combed cotton "silky touch" interlock, 210gsm (6.5 oz/sq yd)

Sizes: S, M, L, XL, +1 (XXL), +2 (3XL), +3 (4XL)

Colors: white, navy, red

Colors: black 🇨🇦 made in Canada



C. HBNT - Boatneck Long T

Ladies' capsleeve boatneck T. Longer mid-hip length. 1" 2-needle binding around neckline. 2-needle coverstitch "mini" capsleeve & bottom hem.

Fabric: 100% combed cotton "silky touch" interlock, 210gsm (6.5 oz/sq yd)

Sizes: S, M, L, XL, +1 (XXL), +2 (3XL), +3 (4XL)

Colors: white, red, navy, pink

Colors: black 🇨🇦 made in Canada





A. CHRL - Longsleeve Collegiate Spirit T

Ladies' longsleeve Vneck T w/contrast side panels. Accented with a sporty 3-needle double contrast color trim collar and sleeve binding. Raglan sleeves. Double needle hemmed bottom.

Fabric: 100% combed cotton "silky touch" interlock, 210gsm (6.5 oz/sq yd)

Sizes: S, M, L, XL, +1 (XXL), +2 (3XL), +3 (4XL)

Colors: red/black/white, red/white/red

Colors: black/orange/white  made in Canada



B. CHRS - Shortsleeve Collegiate Spirit T made in Canada

Ladies' shortsleeve Vneck T w/contrast side panels. Accented with a sporty 3-needle double contrast color trim collar and sleeve binding. Raglan sleeves. Double needle hemmed bottom.

Fabric: 100% combed cotton "silky touch" interlock, 210gsm (6.5 oz/sq yd)

Sizes: S, M, L, XL, +1 (XXL), +2 (3XL), +3 (4XL)

Colors: white/black/red, black/orange/white, white/red/white




C. VSTY - Varsity T

Ladies' 3/4 sleeve varsity T. Overlapping Vneck yoke, double needle topstitch detailing on yoke seam and collar, two 3/8" contrast varsity stripes on both sleeves. Sleeve and bottom hem finished with double needle coverstitch.

Fabric: 100% combed cotton "silky touch" interlock, 210gsm (6.5 oz/sq yd)

Sizes: S, M, L, XL, +1 (XXL), +2 (3XL), +3 (4XL)

Colors: navy/white, royal/white, red/white

Colors: black/silver  made in Canada



D. GTT1 - Fitted Tank Top

Ladies' classic fitted tank top. 1/2" binding around collar and armholes, double needle coverstitch bottom hem.

Fabric: 100% combed cotton "silky touch" interlock, 210gsm (6.5 oz/sq yd)

Sizes: S, M, L, XL, +1 (XXL), +2 (3XL), +3 (4XL)

Colors: white, pink, red

Colors: black  made in Canada

A. SPHY - Snap Button Henley

Ladies' shortsleeve henley tee. 3/4" placket binding with 5 metallic snap buttons. 2-needle 1/2" binding on collar & capsleeves. Serged raw edge scalloped bottom.

Fabric: 100% combed cotton "silky touch" interlock, 210gsm (6.5 oz/sq yd)

Sizes: S, M, L, XL, +1 (XXL), +2 (3XL), +3 (4XL)

Colors: white, pink, red, chocolate, navy

Colors: black  made in Canada



B. GSP0 - Contrast Side Panel Vneck T

Ladies' contrast side panel Vneck T. Contrast colour sleeve & collar trim and side panels. Crossover Vneck collar, 5/8" serged sleeve trim, and 2-needle coverstitch bottom hem.

Fabric: 100% combed cotton "silky touch" interlock, 210gsm (6.5 oz/sq yd)

Sizes: S, M, L, XL, +1 (XXL), +2 (3XL), +3 (4XL)

Colors: navy/white, red/white

Colors: black/white  made in Canada

C. GLCS - Lace Up T

Ladies' shortsleeve lace up tee. Twill tape placket with 5/8" serge collar. 8-hole cotton lace up. Accented with a 1-1/4" contrast sleeve stripe. 2-needle hemmed sleeves and bottom.

Fabric: 100% combed cotton "silky touch" interlock, 210gsm (6.5 oz/sq yd)

Sizes: S, M, L, XL, +1 (XXL), +2 (3XL), +3 (4XL)

Colors: pink/white, black/white, red/white, white/black, navy/white



Garment And Fabric Specifications

Restaurant and Servers

Men's Referee: REFCm, REFVm, REFF

	S	M	L	XL	XXL	3XL	4XL
Chest Width	19	20.5	22	23.5	25	26.5	28
Body Length	26	27	28	29	30	31	32

Ladies' Referee: RVLt, RAWL, RDSL, RVLL, RPOL

	S	M	L	XL	+1	+2	+3
Chest Width	14.25	15	16	17	18.5	20	21.5
Body Length	26	27	28	29	30	31	32

Ladies' Referee: RSPV

	S	M	L	XL	+1	+2	+3
Chest Width	14	15	16	17	18.5	20	21.5
Body Length	24	25	26	27	28	29	30

Men's Micropoly: MPCT, MPVN, MPOL

	S	M	L	XL	XXL	3XL	4XL
Chest Width	19	20.5	22	23.5	25	26.5	28
Body Length	26	27	28	29	30	31	32

Ladies' Micropoly: HDVP, HSVP, HSDP, HV00

	S	M	L	XL	+1	+2	+3
Chest Width	14.25	15	16	17	18.5	20	21.5
Body Length	26	27	28	29	30	31	32

Ladies' style: RLXV

	S	M	L	XL	+1	+2	+3
Chest Width	16	17	18.5	20	21.5	23	25.5
Body Length	24	25	26	27	28	29	30

Ladies' styles: TK12, TKDS

	S	M	L	XL	+1	+2	+3
Chest Width	13	14	15	16	n/a	n/a	n/a
Length TK12	22	23	24	25	n/a	n/a	n/a
Length TKDS	31	32	33	34	n/a	n/a	n/a

H-series: HDST, H3DV, HBNT

	S	M	L	XL	+1	+2	+3
Chest Width	14.25	15	16	17	18.5	20	21.5
Body Length	26	27	28	29	30	31	32

Ladies' styles: NBST, NSKT

	XXS	XS	S	M	L	XL
Waist	23.5	25	26.5	28	29.5	31

Performance / Athletics

Ladies' style: BSTK

	S	M	L	XL	+1
Chest Width	14.5	15.5	16.5	18	19.5
Body Length	23	24	25	26	27

Ladies' styles: BSRG, BSHY, BSCL

	S	M	L	XL	+1
Chest Width	16	17	18	19.5	21
Body Length	23	24	25	26	27

Ladies' styles: NSSH, NSCA

	XS	S	M	L	XL
Waist	25	26.5	28	29.5	31

Ladies' style: NHDY

	S	M	L	XL	+1
Chest Width	17	18.25	19.5	21	22.5
Body Length	21	22	23	24	25

Ladies' styles: NYPT / NYCP

	S	M	L	XL	+1
Waist	26.5	28	29.5	31	32.5
Inseam (NYPT)	30	31.5	32.5	34	35
Inseam (NYCP)	21	22	23	24	25

Ladies' style: NSSR

	S	M	L	XL	+1
Chest Width	14	15	16	17	18.5
Body Length	21	22	23	24	25

Youth style: NHDYc

	Sz 6	YS	YM	YL
Body width	12.5	13.5	14.5	15.5
Body length	17.5	18.5	19.5	20.5
Sleeve length (fr. CB neck)	22.5	24	25.25	26.5

Youth style: NYPTc

	Sz 6	YS	YM	YL
Waist (relaxed)	18	21	22.5	24
Inseam	21.5	24	26	27

Unisex Cycling: CYCJ

	XXS	XS	S	M	L	XL	XXL
Chest Width	16.5	17.5	18.5	19.5	21	22.5	24
Body Length (front fr. CBN)	21.5	22.5	23	24	25	26	27
Body Length (back fr. CBN)	24	25	26	27	28	29	30

CBN = center back neck

Casual Comforts

Ladies' style: PRLT

	S	M	L	XL
Chest Width	15.5	16.5	17.5	18.5
Length	29	30	31	32

Ladies' style: PRLC

	S	M	L	XL	+1
Chest Width	16	17	18	19.5	21
Body Length	25	26	27	28	29

Ladies' style: DOTWF

	S/M	L/XL
Chest Width	18.5	20.5
Length	23.5	24.5

Cotton Classics

Ladies' styles: CHRl, CHRs, GLCS, GSP0, VSTY

	S	M	L	XL	+1	+2	+3
Chest Width	14.25	15	16	17	18.5	20	21.5
Body Length	22	23	24	25	26	27	28

Ladies' style: SPHY

	S	M	L	XL	+1	+2	+3
Chest Width	14.25	15	16	17	18.5	20	21.5
Body Length	23	24	25	26	27	28	29

Ladies' style: GTT1

	S	M	L	XL	+1	+2	+3
Chest Width	13.5	14.5	15.5	16.5	18	19.5	21
Body Length	22.5	23.5	24.5	25.5	26.5	27.5	28.5

The above measurements are taken as a guideline and are subject to a tolerance of approximately +/-0.5".
All measurements are taken with the garment laid flat *inside out* and measured seam to seam.

Fabric Specs:

Silky Touch Interlock

- 100% combed cotton, 38 singles yarn
- 10.8 oz (6.5 oz/sq yd, 210 gsm)
- "Bio-washed" for smoother, cleaner surface

Performance Jersey

- 90% nylon, 10% spandex
- 11.25 oz (6.75 oz/sq yd, 230 gsm)
- "Wicksoft" moisture control finish

Micropoly Interlock

- 100% Microfibre polyester
- 7.1 oz (4.25 oz/sq yd, 140 gsm)
- Quick dry wicking
- antibacterial
- easy care
- fade resistant

Sheer Jersey

- 100% combed cotton, 32 singles yarn
- 6.5 oz (3.9 oz/sq yd, 135 gsm)
- fine, light weight jersey

Spandex 1x1 Rib

- 95% Ring Spun cotton, 5% spandex, 32 singles yarn
- 12.5 oz (7.6 oz/sq yd, 260 gsm)
- "Bio-washed" for smoother, cleaner surface
- excellent shape retention

Micropoly "Bird's Eye" ProMesh

- 100% Microfibre polyester
- 7.35 oz (4.5 oz/sq yd, 150 gsm)
- Quick dry wicking
- antibacterial
- easy care
- fade resistant

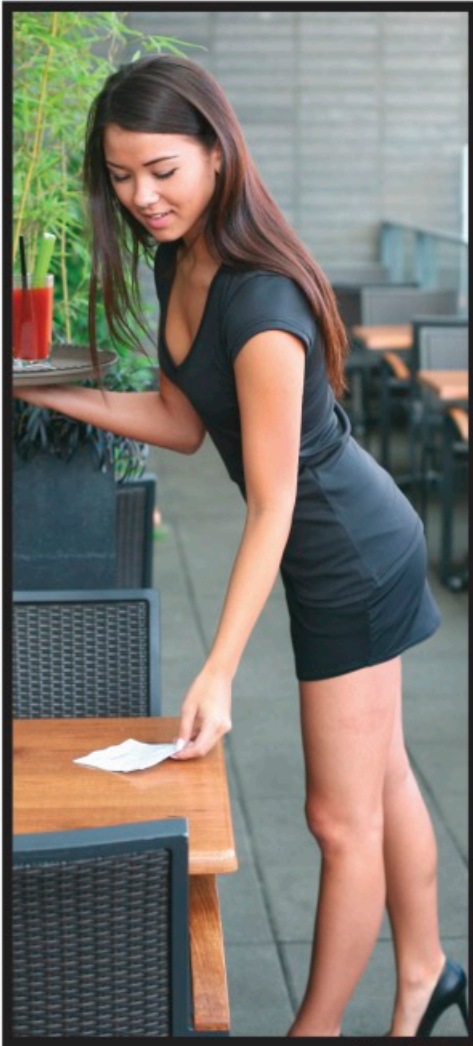
Referee Jersey

- 100% Microfibre polyester
- 7.1 oz (4.25 oz/sq yd, 140 gsm)
- Quick dry wicking
- antibacterial
- easy care
- non-fading sublimation printed stripes

Poly Rayon Jersey

- 65% polyester, 35% rayon
- 6.7 oz (4.0 oz/sq yd, 135 gsm)
- super soft
- drapey, light weight jersey

Brightline
sportswear mfg. inc.
www.brightline.ca
Tel: 1.866.251.8288



Available through:

North America Wholesale Distribution:

Brightline
sportswear mfg. inc.
www.brightline.ca
Tel: 1.866.251.8288

980 Clark Drive
Vancouver, B.C. V5L 3J8
Tel: 604.251.5456
Fax: 604.251.5488
Email: sales@brightline.ca

Canada Wholesale Distribution:

Quality
SPORTSWEAR
www.qualitysportsdist.on.ca
1.877.462.4237

9285 - 49th Street
Edmonton, AB T6B 3A9
Tel: 780.466.1122
Fax: 780.465.8982 / 800.349.7758
Email: orders@qualitysportsdist.on.ca



www.westmountdist.on.ca
Toll Free: 1.800.461.4906

4205 Perkins Road
London, ON N6L 1C2
Local: 519.652.2227
Fax: 519.652.3975 / 1.800.565.5878
Email: cservice@westmountdist.on.ca

Brightline
sportswear mfg. inc.
www.brightline.ca
Tel: 1.866.251.8288



Available through: