

Esko ArtiosCAD 20.0

Release Notes



ArtiosCAD 20 Release Notes



Visit ArtiosCAD news...

<https://www.esko.com/lp/artioscad/artioscad-news>

-OR-

Navigate to Help > ArtiosCAD News after starting ArtiosCAD

What's new in:

- [Design](#)
 - Variangle knife support
 - Select tool shortcuts
 - Mate tool improvements
- [3D](#)
 - Autobottom mates
- [Layout](#)
- [Manufacturing](#)
 - Counters
- [General](#)
- [Infrastructure](#)
- [Integration](#)
 - CAPE
- [View](#)
- [Enterprise](#)

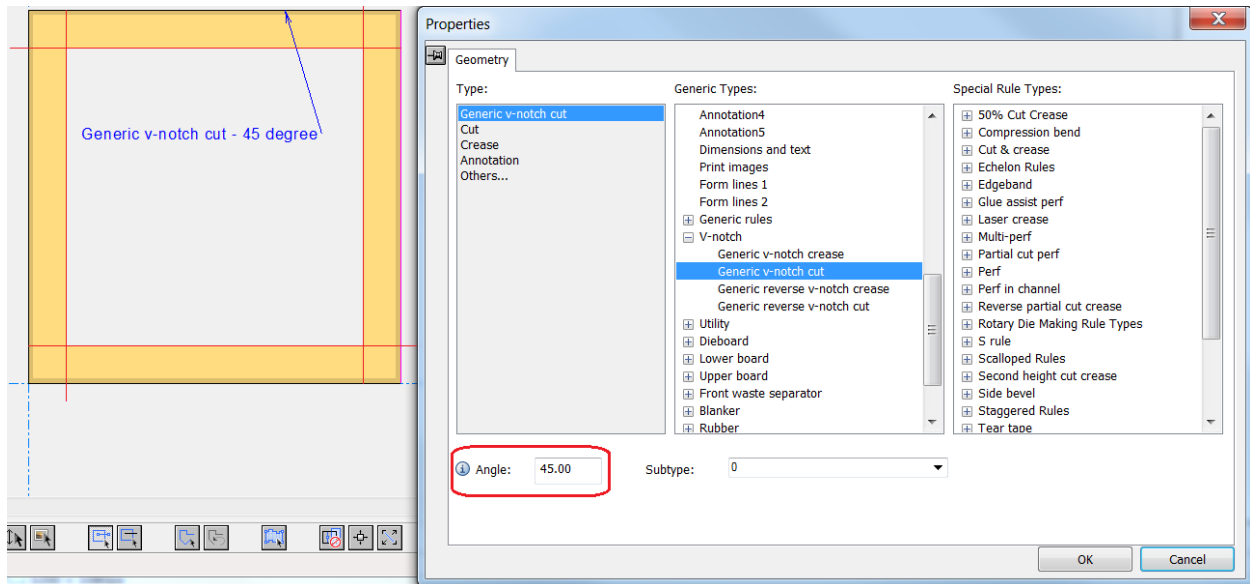
[Problem fixes](#)

[Important notes for all users](#)

What's new?

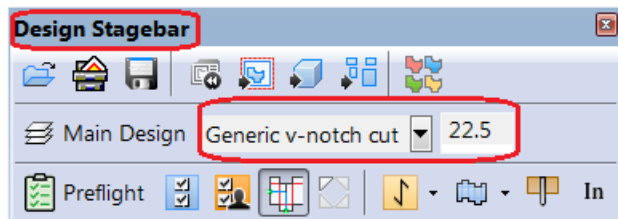
Design Enhancements

- **Variangle knife support** for table cutting of re-board and other thick materials with multiple v-notch angles.



Generic V-notch line types have been added that can be defined in angles from 0 to 60 in increments of $\frac{1}{2}$ degree to support the Kongsberg Variangle knife. Generic v-notch types include cut, crease, reverse cut, reverse crease

The angle can be changed in the design stagebar.



This line type allows more than the 39 special rules allowed in a design today. The use of special rule V-Notch types has been preserved and files created with these special rule types are forwards compatible.

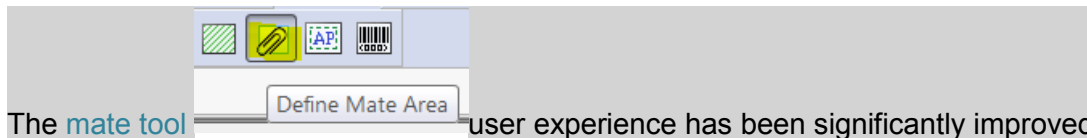
V-notch designs may be converted to 3D.



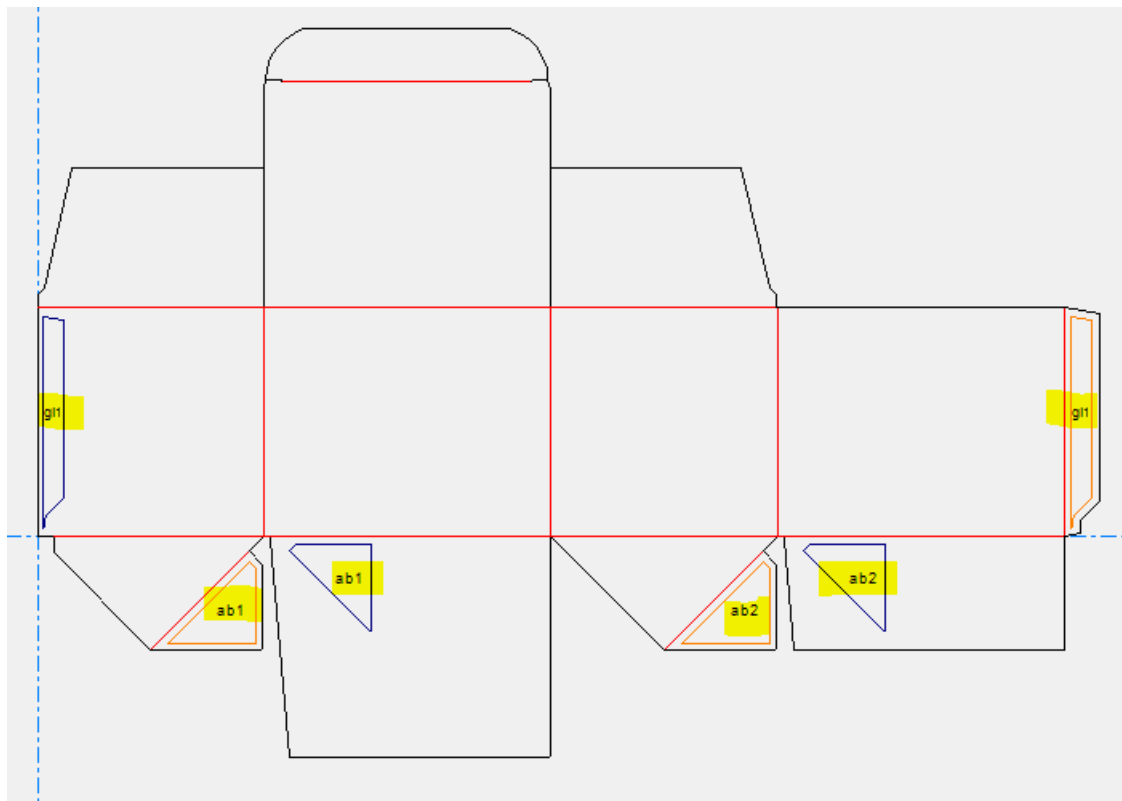
ARDs with the generic V-notch type can be pushed to iPC via the iPC output.



ACM based Samplmaking is **not** supported for this version.



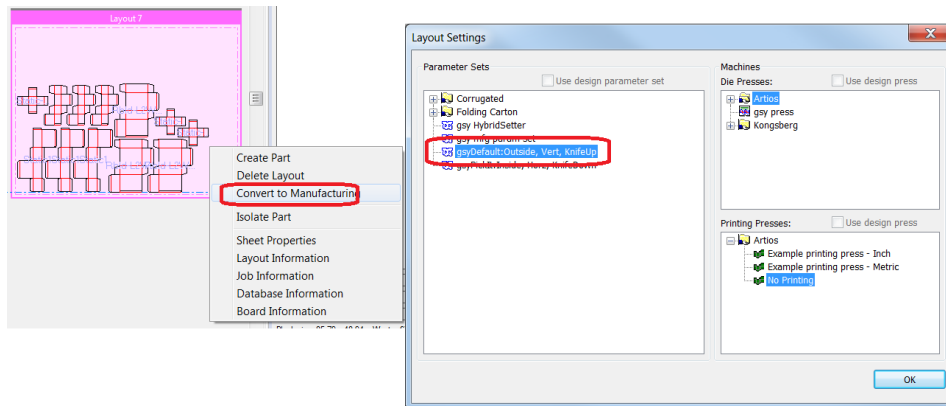
- The **mate tool** user experience has been significantly improved.
 - For cartons that need to be glued onto themselves, The mate tool will now automatically recognize mates areas that can be recognized and mated in 3D. This means for 4 panel sleeves, mates within the glue tab and a target area on the 4th panel will automatically appear. For autobottoms, mates will automatically appear on the foldback flaps and the corresponding target flaps.



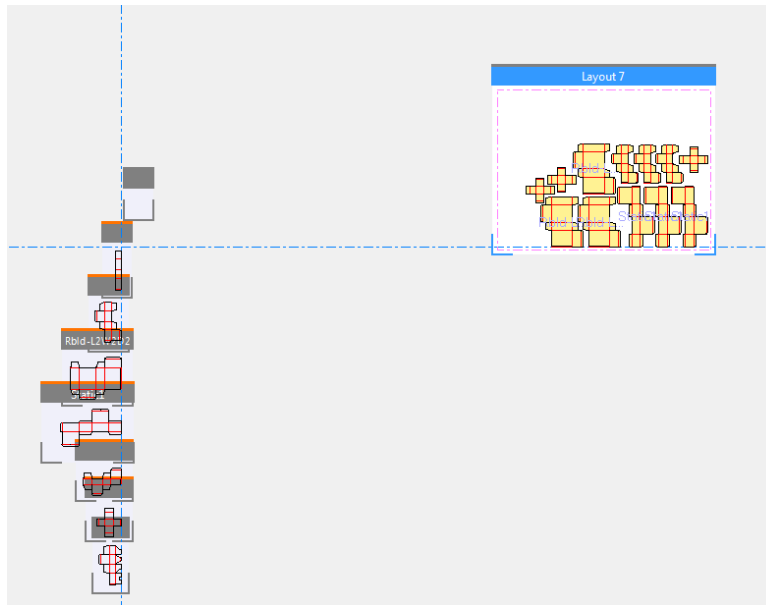
- For other cases placing mates across different parts for pop up cards, foam pieces and certain types of standalone displays with glue tabs that can't be recognized but could be mated, the user can use the mate tool to select a mate area and then immediately place a target area while tool is still active.

- **Canvas layouts now:**

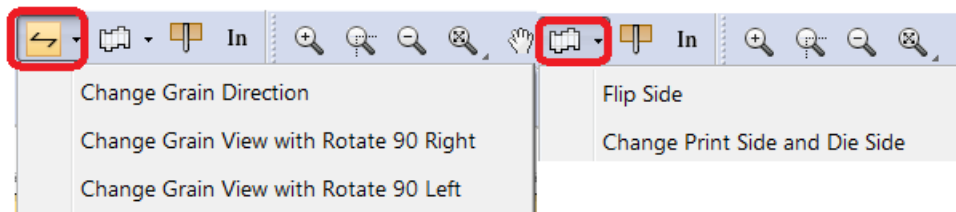
- Honor the side of the parameter set when converting a layout to mfg



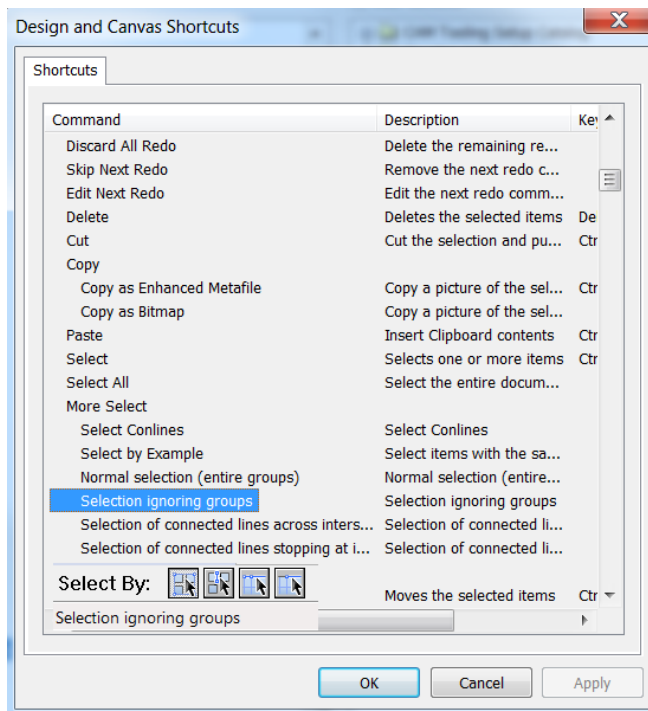
- Mirror the oneups in a layout when canvas side changes. If the grain changes, the oneups do not rotate but a visual cue is presented to the user indicating as such



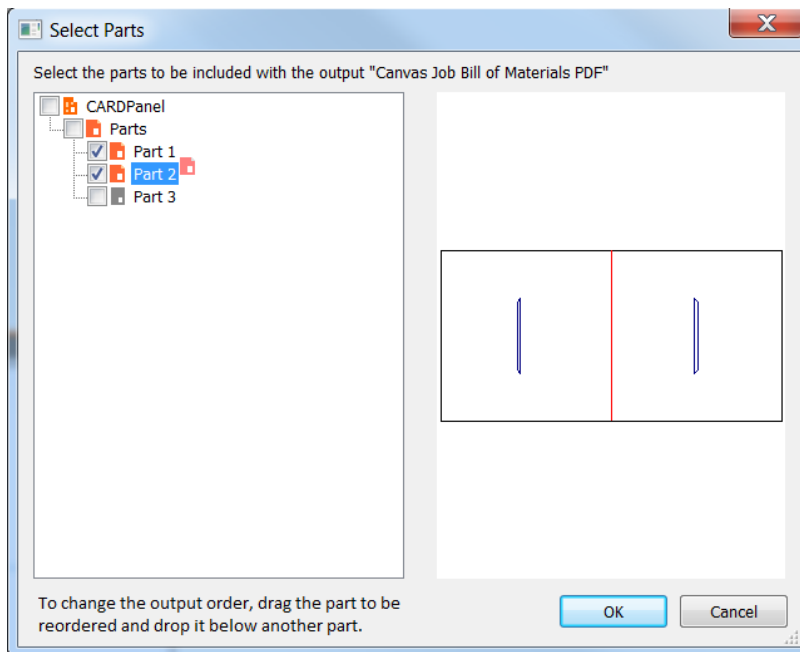
- The Grain, Print and Cut side icons have been separated into their functionality to allow the user to change the structural aspect and view.



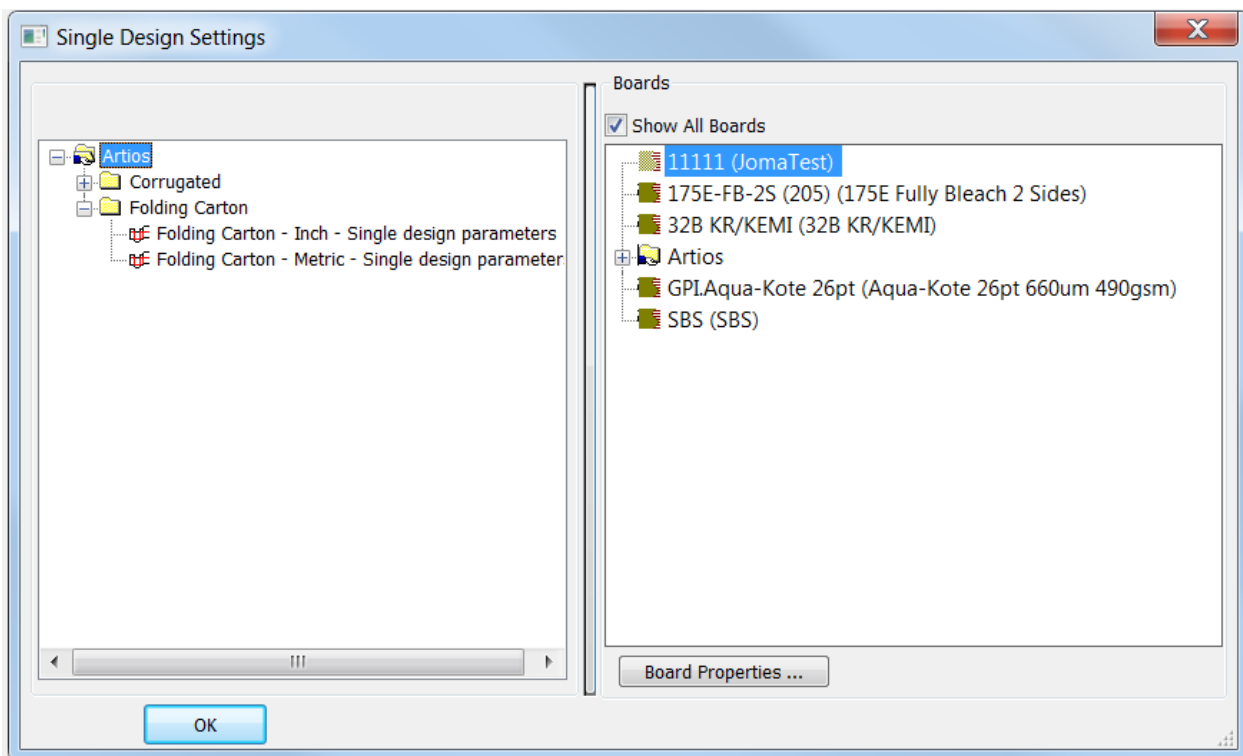
- Select tools are now allowed as shortcuts.



- The [part order of a canvas](#) may be user-determined for an output. When a canvas design is open, the user may navigate to Parts > Parts Outputs > *Output* and rearrange the part order for output by dragging and dropping below another part.

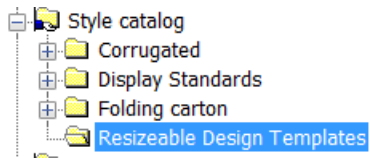


- The [board dialogs](#) are now resizable and persist.



- [Resizable Design Templates \(RDTs\)](#), aka, standards, for Fefco and ECMA have been updated in the ArtiosCAD style catalog. Updates will be an ongoing endeavor and new styles will be added in future releases.

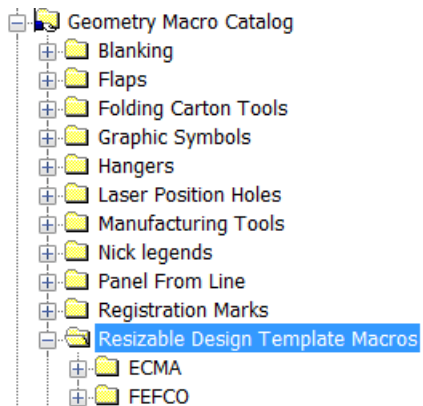
Navigate to Options > Defaults > Style Catalog > Resizable Design Templates



See <Artios folder>\<version>\Instlib\<library>\Documentation for xls files that describe how the RDT was constructed.

Example: C:\Esko\Artios\ArtiosCAD20.0\InstLib\ECMA\Documentation\ET_A20.20.01.01_.xlsx

Geometry macros which were used to construct the RDTs have also been added.



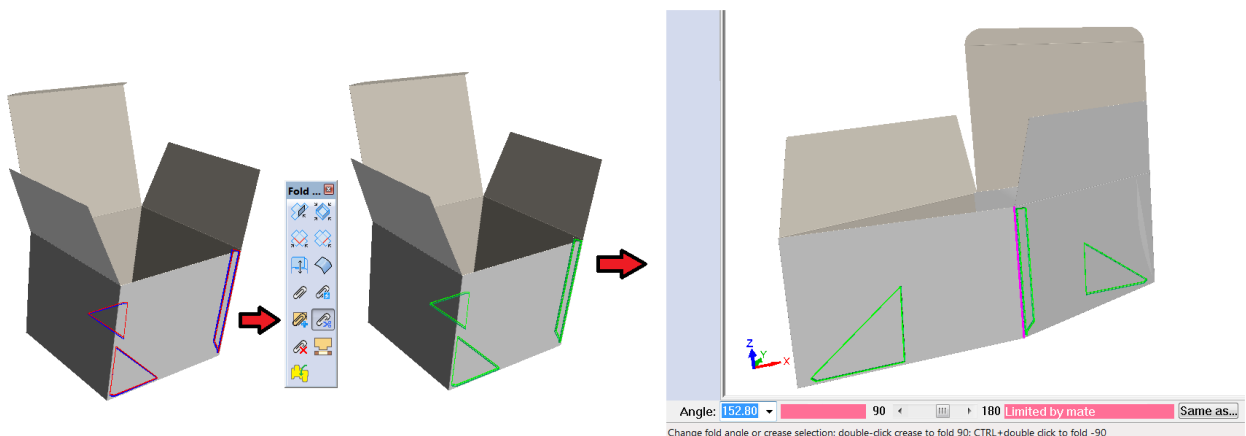
See <Artios folder>\<version>\Instlib\Geometry macros\<library>\Documentation for xls files that describe how the geometry macro was constructed.

Example: C:\Esko\Artios\ArtiosCAD20.0\InstLib\Geometry macros\ECMA\Documentation\EGM_A20_21_30_Cover_Tuck_flap_Bottom.xlsx

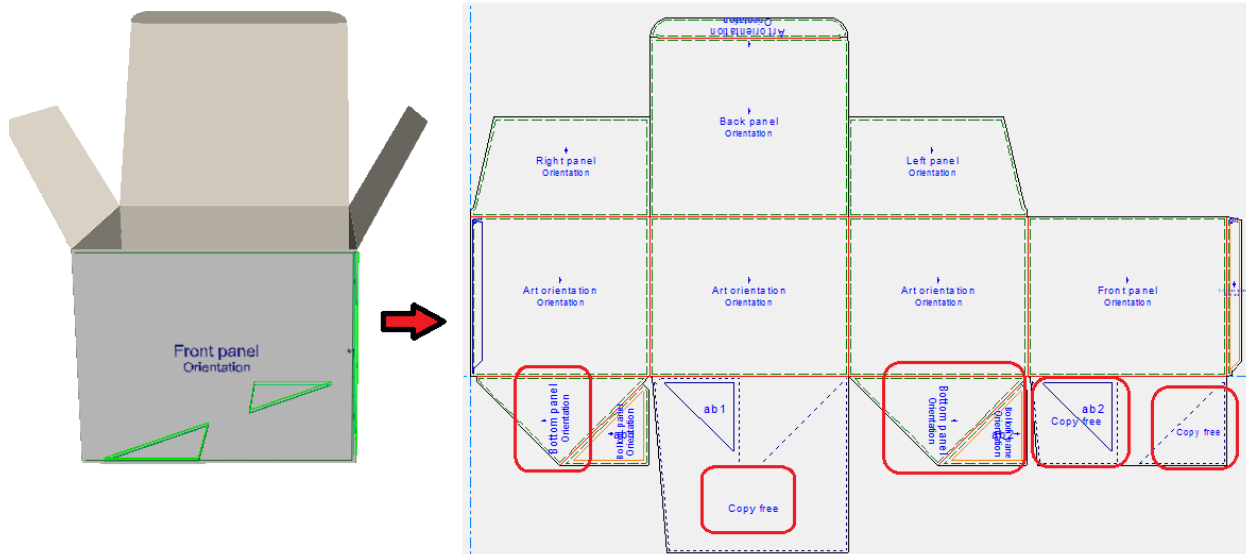
All previously released standards have been rerelease with improvements to the standard. These files are installed in the instlib directory in disk and will not replace any in ServerLib or ClientLib. The standards should be evaluated before considering moving them outside instlib for access by your designers.

3D Enhancements

- The user can convert to 3D, **Mate All** and create a mated (glued) autobottom which can transition from an open state to a knocked down state.



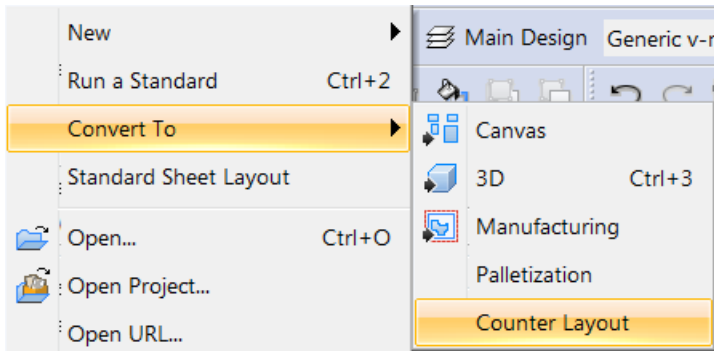
- The user can use 3D to identify the copy and copy free areas of the autobottom for Artwork panels.



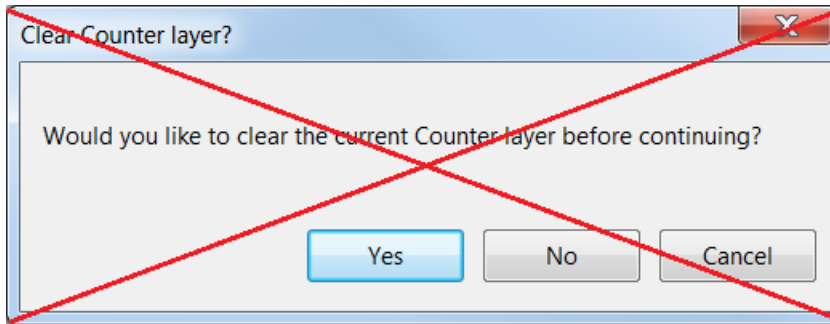
Layout Enhancements

Manufacturing Enhancements

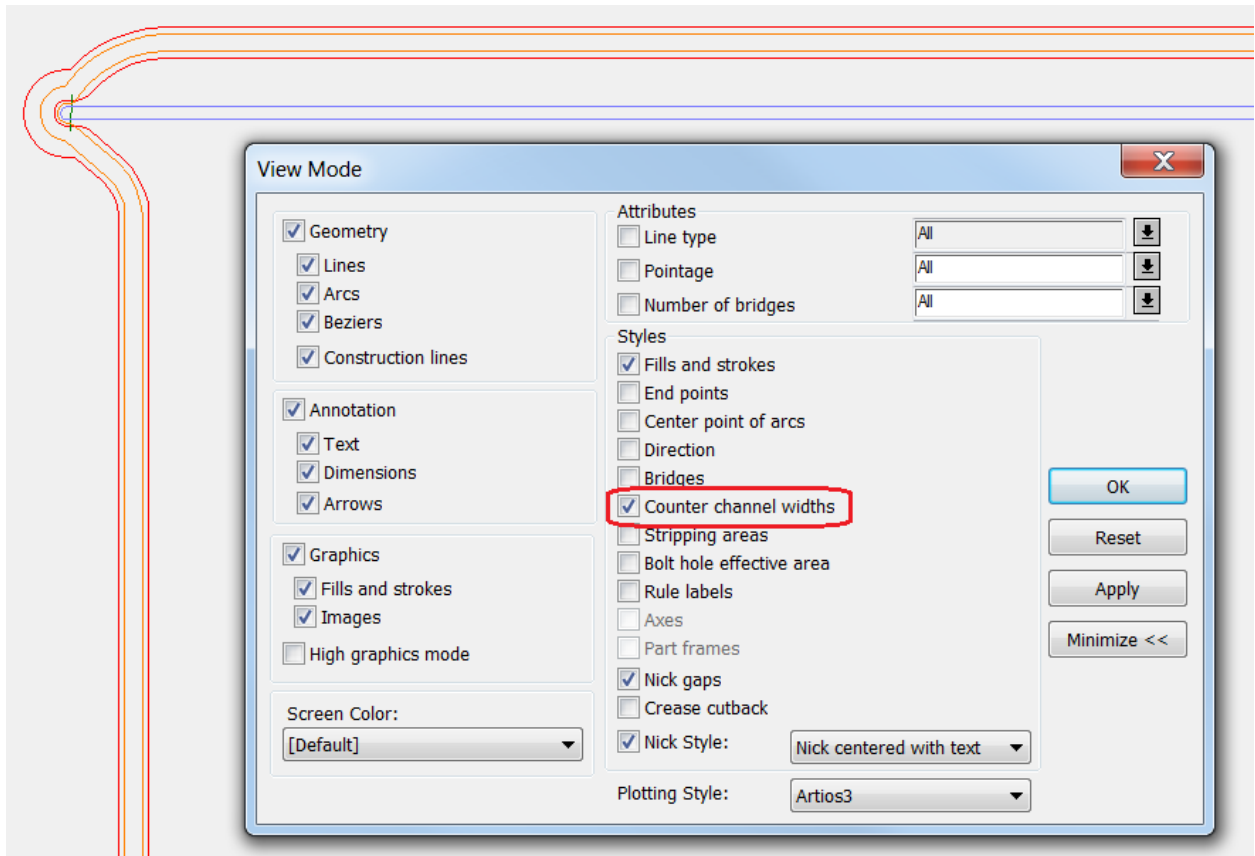
- Counters User-Experience has been enhanced
 - An ARD that has a phenolic/plastic counter can now easily convert it to a counter layout with the same name as the ARD.



- When rebuilding the chamfer, the tool simply performs the operation and the user is no longer asked to clear the counter.



- When in a counter layout, the view mode allows counter channel widths to be visible.

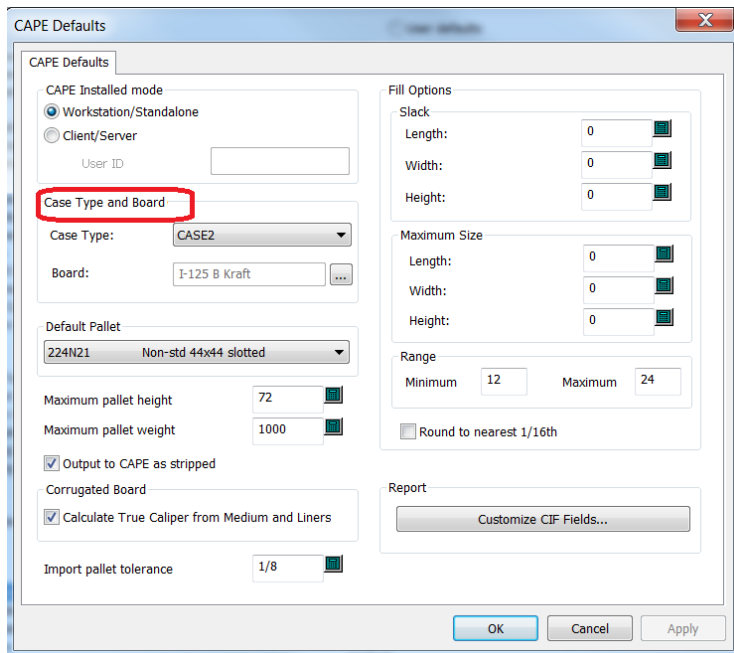


General Enhancements

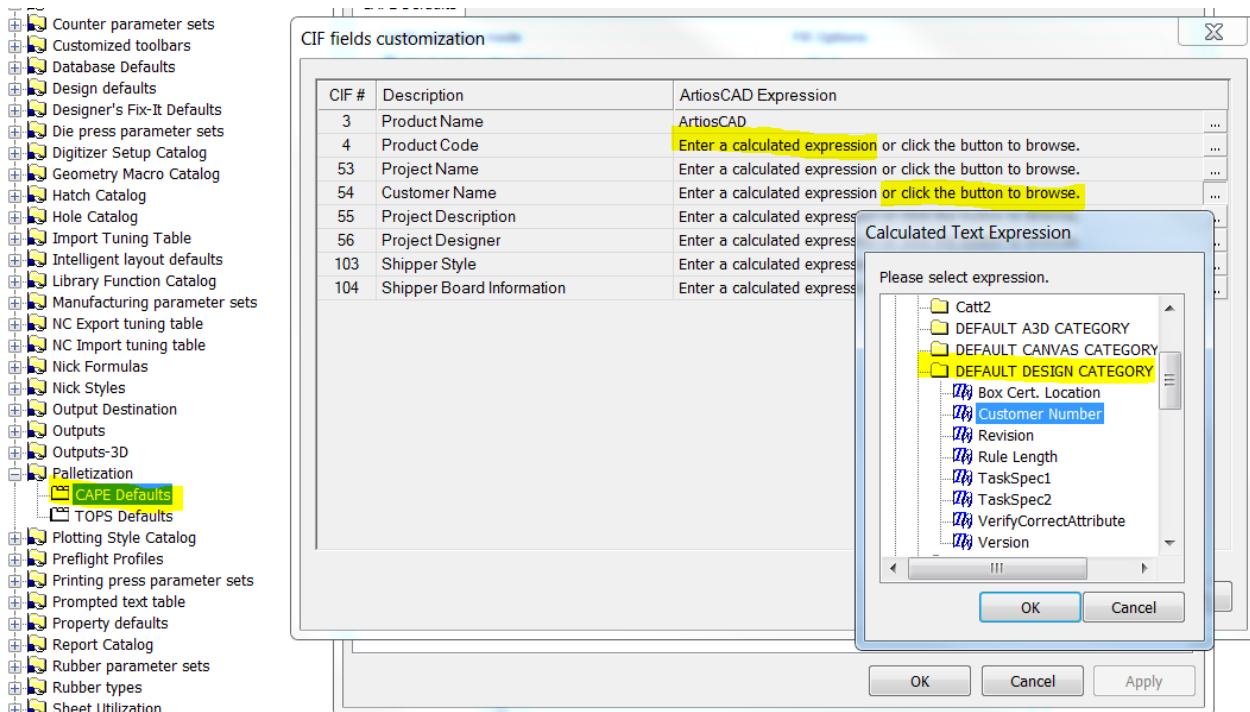
Infrastructure Enhancements

Integration Enhancements

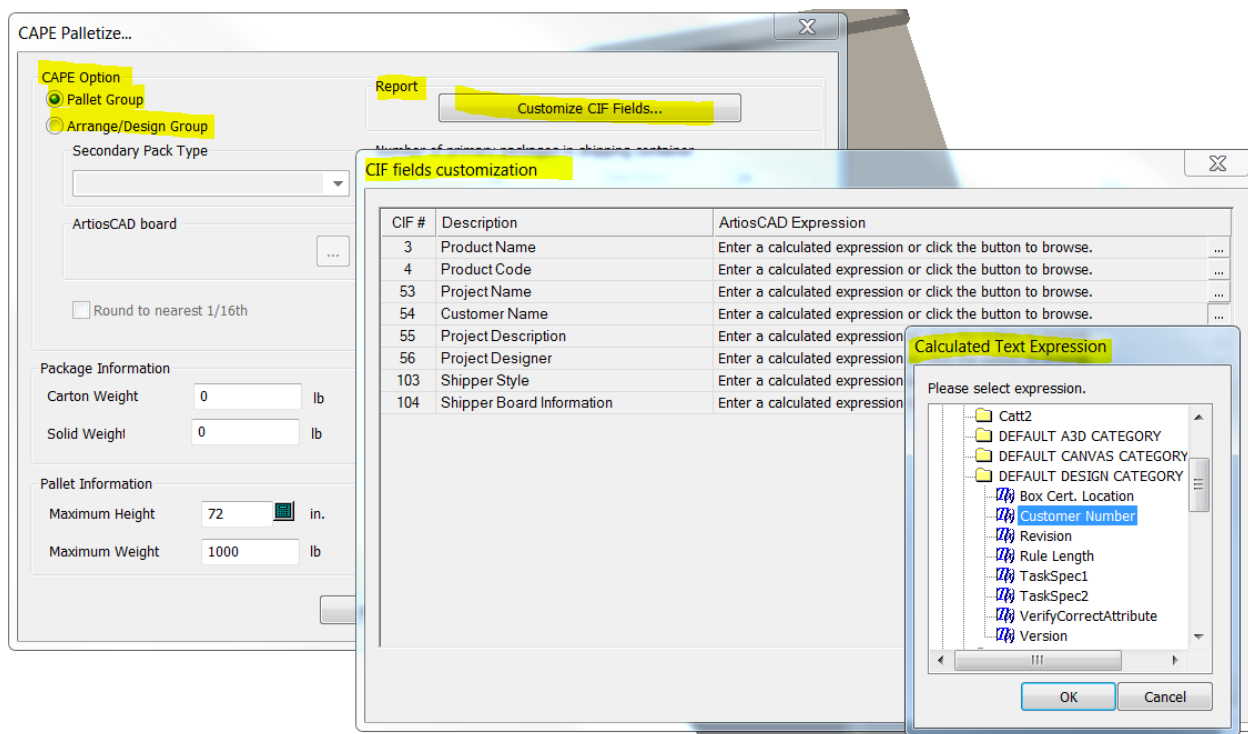
- [Default options to specify default CAPE style and material for palletization](#) now exist



- CAD data can be passed back to CAPE for cloud reporting when creating a palletization solution Pallet Group or Arrange/Design Group in 3D. Defaults can be configured to preseed various values.



Or the values can be entered at the point the solution is created

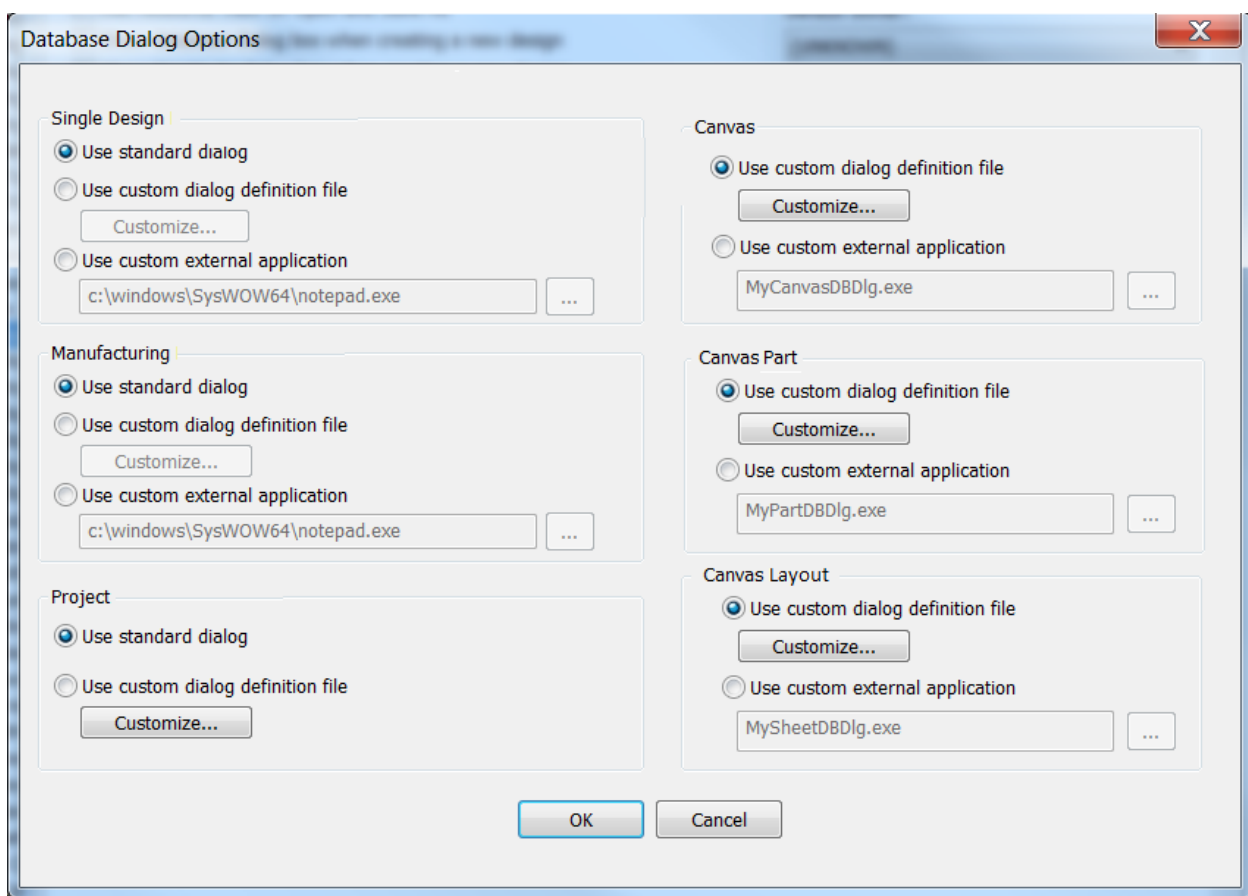


Since this feature starts in 3D and the enterprise edition provides for an attribute category for 3D documents whereas the standard edition does not have 3D userfields, the enterprise edition allows calculated expressions to be selected from a dropdown. The standard edition does not.

Cape 20 is required to process these fields and send to a report.

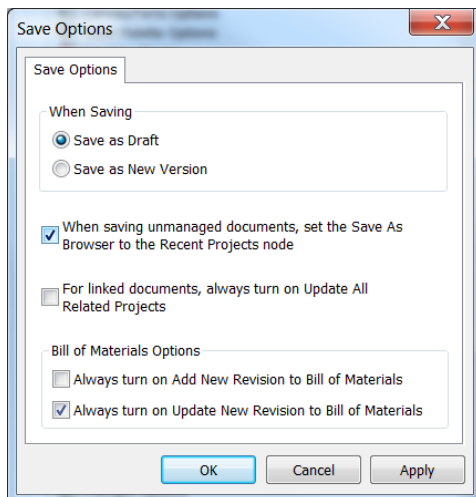
- **Database information dialogs** have been extended for Canvas. These are configured in: *Defaults* > Design Defaults > Database > Database Information Dialog Customization for standard edition and *Defaults* > Database Defaults > Database Information Dialogs for enterprise edition.

An example of standard edition:

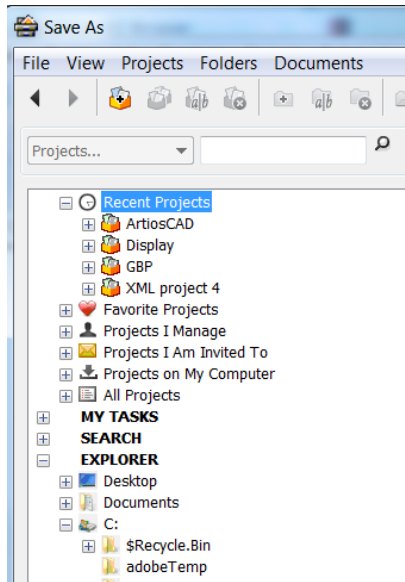


Enterprise

- ArtiosCAD now has [an option to specify how an unmanaged file may be saved to a project in the browser rather than from where the disk \(unmanaged\) location it came from.](#)



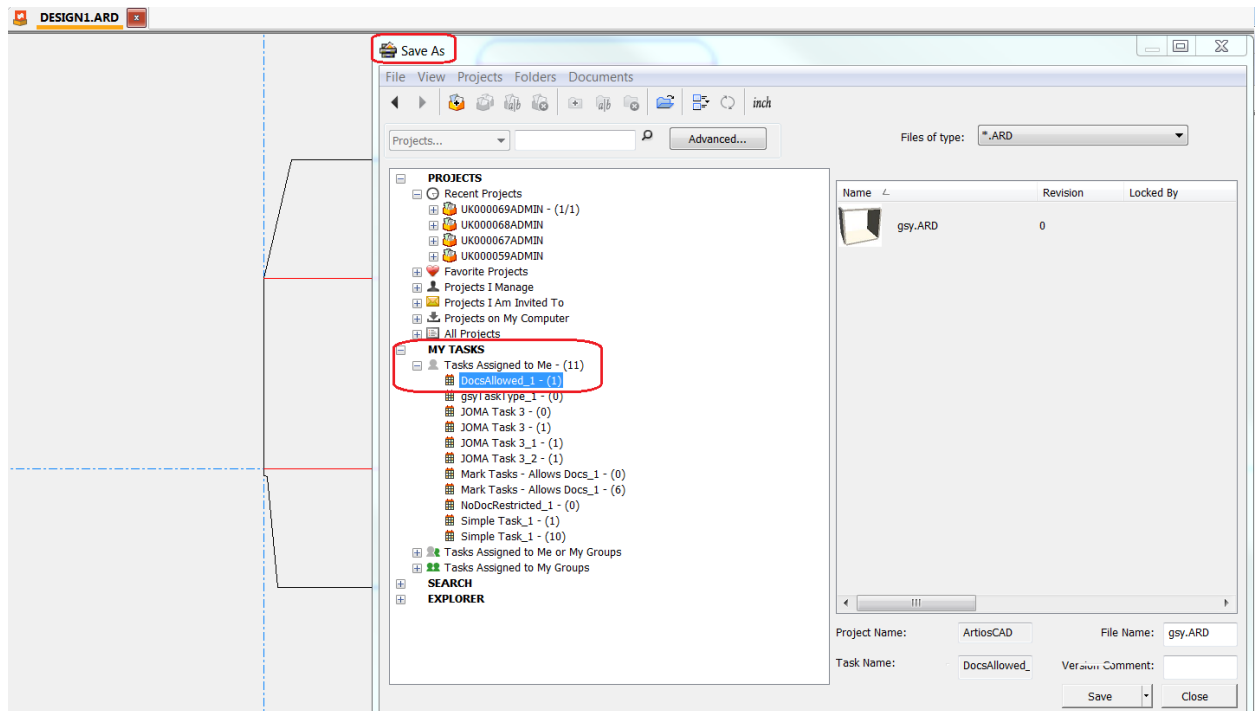
A Save As will now set the default location to Recent Projects so the user does not have to scroll all the way from the Explorer node section to the Projects sections.



- ArtiosCAD will now allow [project attributes to be specified by the user](#) when creating a new project from a template with enterprise. The WebCenter 20 is required and Template > Configure > Project Creation > Show *attributes* must be set.

Attribute	Value	Type	Description
Customer code	"Code Red"	Text	
Design Calcul...	"0"	in2	Design Calcul...
Pallet Length	"15"	in	Pallet Length

- A structural design, initiated as a result of a task assignment, and [saved over the placeholder task document will assume the attribute category of the placeholder task document](#). The new version will inherit the attributes values of the placeholder document.



- ArtiosCAD Enterprise client and WebCenter **interoperability**:
 - ArtiosCAD 20 may be used with WebCenter 20. WebCenter 20 is required for full functionality.
 - ArtiosCAD 20 may be used with WebCenter 18.1.1 except for project autonaming with project attributes
 - ArtiosCAD 18.1.1 may be used with WebCenter 20

Problem fixes:

	Customer reported fixes
ACAD-3208	Linienprobleme mit pdf
ACAD-7122	Rotation Angle Error
ACAD-7217	Bleed acting not correct with matrix crease
ACAD-7348	Artios – output iPC
ACAD-7351	BUGREPORT: ArtiosCAD crashes when opening complex 3D file
ACAD-7429	Report outputs flips the layout the wrong way when the report and output specify a side other than the design
ACAD-7502	Crash in collada import
ACAD-7535	Rule labels do not show for layout and embedded design in the same report
ACAD-7555	Geo-macro not working if line type label
ACAD-7563	ArtiosCAD 18.1.1 crashes when closing projects
ACAD-7575	18.1.1 Artios Cad keeps freezing (HF for 18.1.1)
ACAD-7615	Printer Output – Graphics layer problem (HF for 18.1.1)
ACAD-7616	PDF with report output fail (HF for 18.1.1)
ACAD-7628	Dimensions cont converting to fractions to decimal in PNG output

ACAD-7632	Bug Report: Add Bridge tool Different bridge ssize dialogs doesn't respect choice "Change the old bridges to the new size".
ACAD-7687	Apply hatch crashes ArtiosCAD
ACAD-7699	Strip area – Upper External blocks - issue
ACAD-7737	Artios CAD – won't allow him to "hatch"
ACAD-7741	(Enterprise) ArtiosCAD – Publish Revision/Version Screens Cut Off
ACAD-7744	Artios – Getting unable to run the standard after upgrading
ACAD-7748	ArtiosCAD problems when exporting PDF
ACAD-7794	Corrupted DS2 File
ACAD-7797	ArtiosCAD 18 some standards are not working anymore
ACAD-7799	Problem when 2 layout windows in same report
ACAD-7808	ArtiosCAD CAD-X integration – XXXXXXXX is failing on second ArtiosCAD selection
ACAD-7845	Export -> Send to ArtiosCAD crashes ArtiosCAD Enterprise
ACAD-7857	Geometry macros with special characters in the menu name split each variable to a new menu
ACAD-7910	3D shows crease as cut, if...
ACAD-7916	Steel counter uses the radius values as the land value for the channel end
ACAD-7967	Crash on output

Important internal fixes

ACAD-1944	Distances from Cut & Distances from Crease for Mate tool not working
ACAD-2350	Counter tool and Shorten creases do not respect *W factor
ACAD-4764	v-notch facelet does not render properly
ACAD-4825	Project Bar BOM node not automatically refreshing
ACAD-6018	Problem with 3D V-notch folding
ACAD-7046	Import standard as new part gets different results when using formula or value options
ACAD-7101	When browsing to select a new filename for a parameter set, default to ZIP extension instead of ARD
ACAD-7202	File crashes on PDF output
ACAD-7213	Enterprise – ProE and STL files have wrong extension when exporting to another format
ACAD-7273	Tab n slot mate fails to maintain orientation when converting to 3D from canvas
ACAD-7312	Crash in preflight (limits testing)
ACAD-7350	Crash in tear-away tool
ACAD-7358	Canvas > layout > allow output to iPC to contain mfg file in zip if canvas active part is layout
ACAD-7373	Analyze issue w/ GPX customer
ACAD-7404	(Pre release) Stripping component is placed twice on external slots
ACAD-7406	(Pre release) Stripping block cannot be created with desired offset
ACAD-7409	Option to not base resetting of sheet size on unknifed diecut, but first knife
ACAD-7415	ArtiosCAD – Canvas – Renaming Part Name to a long name crashes ArtiosCAD
ACAD-7421	(Pre release) Lower stripping board output ignores holes when the modifier lines cross multiple times



ACAD-7422	(Pre release) Lower holes are not created correctly
ACAD-7435	UX > CPF Scan > Double knife fix-it splits longer line rather than remove shorter double line
ACAD-7437	Rubber missing slots
ACAD-7438	Canvas layout ? When in isolated mode, parts of adjoining layouts can incorrectly be selected
ACAD-7466	Failed to create stripping for this file
ACAD-7468	ACAD- I can't publish a file from ACAD (conventional) to WCR
ACAD-7472	Canvas not rebuilding Resizable Design Templates with embedded designs
ACAD-7476	Upload boards doesn't work on ArtiosCAD Enterprise 18.1.1 (fix in main should carry to 18.1.2)
ACAD-7481	Can't move part to empty layout in canvas
ACAD-7483	ArtioCAD – Formatting of '0' when in Inches shows trailing zeros
ACAD-7501	Workspace layer output from grouped output does not add layer to part
ACAD-7532	Tear-a-way Animation issue with multiple 3Ds (crash)
ACAD-7548	(Pre release) Crash in rubber creation
ACAD-7742	(Pre release) Slot rubber missing on this file
ACAD-7743	(Pre release) Crash generating rubber
ACAD-7629	Crashes setting variable value (after changing focus)
ACAD-7689	3D panel mate issue w/ parametric parts and rebuild w/ unit switch
ACAD-7700	Creating a layout or converting to MFG from a file/part with a very long name does not truncate item text correctly
ACAD-7793	EcadX – Adding managed design to layout locks it
ACAD-7852	iPC > Samplemaking > CADCore > join cuts across oneups
ACAD-7859	Hatch legend (See WCR-40485)
ACAD-7863	Canvas > import rebuildable > use expression
ACAD-7927	(Pre release) Recalc all does not generate rubber for this file
ACAD-7948	ArtiosCAD - Design with line type "Second height partial cut crease" (255) fails to convert to 3D
ACAD-7912	U3D exports lose special characters in 3D view names

Important Notes for All Users

- Starting with 18.1.1, ArtiosCAD introduced preflight with some automatic corrections. One of these auto-corrections included the ability to remove double knives/lines. The preflight correction ability resulted in an algorithm that now favored longer lines over shorter lines, as a way to make better technical designs. Previously, shorter lines were favored. Rebuildable designs have been encountered where “double knife” removal was used as a design technique to create slots for example of small cuts lines over creases. This has caused some issues where item references which might have existed before are now being deleted during the double line removal step and causing rebuilds to be incorrect or fail. This technique was not anticipated. ArtiosCAD is restored some of the rebuild issues and is still working through others.

- **PCIQ fonts** will be removed after ArtiosCAD 20. Please use true-type fonts.
- The **Artios** (introduced circa 1996 as a transition to ArtiosCAD) and **DBH** (the original interact format) file formats and use of the **devtab** as a configuration file for communicating with printers and ports are considered **obsolete** and support for them will be removed in post 18 versions of ArtiosCAD.
- **Exports** under File > Export > ArtiosCAD 3.2x and lower will be removed in post 18 versions of ArtiosCAD.
- Esko now provides a **knowledge base** at <http://help.esko.com/knowledgebase>. This site can be used to find detailed information for ArtiosCAD and other Esko products about many support questions raised to Esko.
- **Flexnet** is the only licensing system utilized in ArtiosCAD. Users must be prepared to convert the licensing from the hardware key, Sentinel LM or Elan LM to Flexnet. As of Jan 2016, Esko will no longer be able to provide licenses for legacy licensing systems.
- **If the deployed licensing for ArtiosCAD is a network license, the license server *must* be updated with the new system controller provided on the installation media.**
- **Esko software** can be downloaded from <https://mysoftware.esko.com> with a valid support account.
- **User documentation** and help will be available from an online Esko site. Documentation will not be available from the media. The main site is <http://help.esko.com> from which ArtiosCAD and other Esko product documentation is available. The ArtiosCAD help menu will bring the user to the ArtiosCAD help page.
- The most **current Adobe®Illustrator® Esko plugins** can be found at <http://www.esko.com>. Navigate as described below.


The screenshot displays the Esko website's 'Downloads And Licenses' page. At the top, the Esko logo is on the left, followed by a search bar and a language dropdown set to 'English'. On the right, there are links for 'Sign in' and a shopping cart icon. The main navigation bar includes 'Products', 'Solutions', 'Downloads', 'Company', 'Support', 'Store', and 'Contact'. The 'Support' menu is expanded, showing options like 'Product Documentation', 'Downloads & Licenses' (which is highlighted), 'Training', 'Contact Esko Support', and 'Solution Services'. Below the navigation, the page title 'Downloads And Licenses' is prominently displayed. Underneath, there are three tabs: 'Support Overview', 'Product Documentation', and 'Downloads & Licenses' (which is active). The main content area is divided into four sections: 'My Software and Hotfixes' with a download icon, 'Trial Software' with a clock icon, 'Free Software' with a star icon, and 'Mobile Apps' with a smartphone icon. Each section provides a brief description and a 'Find out more...' link. The 'Free Software' section is highlighted with a red box.


ESKO  English Sign in  Cart


Products Solutions Downloads Company **Support** Store Contact

Downloads And Licenses

Support Overview Product Documentation **Downloads & Licenses** Training

My Software and Hotfixes  Visit My Software and download the products and licenses that you purchased from Esko, find the hotfix that fixes your issue, or subscribe to our product release notification e-mails. [Find out more...](#)

Free Software  Download a range of free plug-ins, add-ons and tools that make your life easier. [Find out more...](#)

Mobile Apps  We have iOS apps for WebCenter and Studio, and even an Augmented Reality Tracker! [Find out more...](#)

Free downloads

Plugins for Adobe® Illustrator®

Plugins for Coreldraw®

Demos

Plugins for Adobe® Photoshop®

Tools

Extensions

Plugins for Adobe® Acrobat®

Viewers

Plugins for Adobe® Illustrator®

Esko Data Exchange 14 (CS6 and CC)

Data Exchange Plug-in is a free and simple to use plug-in for Adobe® Illustrator® that acts as a bridge between Adobe® Illustrator®, and the Esko applications Automation Engine, PackEdge, Plato and ArtPro and between Adobe® Illustrator® and ArtiosCAD.

Esko Data Exchange 14 (CS6 and CC)

Data Exchange Plug-in is a free and simple to use plug-in for Adobe® Illustrator® that acts as a bridge between Adobe® Illustrator®, and the Esko applications Automation Engine, PackEdge, Plato and ArtPro and between Adobe® Illustrator® and ArtiosCAD.

ai-cut 14 (CS6 and CC)

Automate the process of adding i-cut registration marks to your jobs.

ai-cut 14 (CS6 and CC)

Automate the process of adding i-cut registration marks to your jobs.

WebCenter Connector 14 (CS6 & CC)

The WebCenter Connector opens native ArtiosCAD single designs, and Studio (Collada) files, stored in WebCenter and ArtiosCAD Enterprise within Adobe Illustrator. It also exports normalized PDF files back to WebCenter.

WebCenter Connector 14 (CS6 & CC)

The WebCenter Connector opens native ArtiosCAD single designs, and Studio (Collada) files, stored in WebCenter and ArtiosCAD Enterprise within Adobe Illustrator. It also exports normalized PDF files back to WebCenter.

Download

Go to Download Center (secure link)

Artwork Systems software

Stay up to date

Receive information about Esko, upcoming events, products and website news by subscribing to the "More! e-zine".

- **Windows 10 editions** has been certified for use with ArtiosCAD 18.1.1 as a standard mouse-controlled application. There are some installation limitations. See <https://wiki.esko.com/display/KBA/KB174658159%3A+ArtiosCAD+-+Install+Standard+Edition+with+Database+on+Windows+10>
 - There are Metro GUI limitations:
 - The application folder structure organized in previous versions of windows 8 has been flattened. There will be multiple application tiles.
 - There is no support for touchpads nor touchscreens and any use of gestures is purely coincidental.
- The **IOServer** (ArtiosIO) is now supported on Windows 7 and higher since Artioscad 14. 1. This means older DataTech plotters still using the IPC controller or any device with an RS232 connection will be supported
- Many users have or are planning to deploy **Citrix, Terminal Services (TS) environments or some other application hosting system**. Esko has *not* officially certified ArtiosCAD for use in a Citrix or TS environment, however, Esko does not prevent its use as long as the customer accepts responsibility for deployment and support of the environment.

20

Esko has verified that ArtiosCAD 20 can run as a Citrix or Terminal Services client and has licensed ArtiosCAD 20 appropriately, however, there are some limitations, *including but not limited to*:

- Flexnet network licensing must be used.
- License reservation or denial via floating license servers is not supported.
- Graphics cards are installed on a Citrix or TS server and ArtiosCAD 3D uses the server card for 3D rendering. The performance of many concurrent 3D users is unknown.
- The exact server specifications (example, memory, processor) for a given set of clients is unknown.
- There are essentially no user defaults, since every Citrix or TS client is running from the same Citrix server.
- There have been reports that access to local devices like hard drives or printers can freeze the machine. It is unknown if these issues have been addressed in newer versions of Citrix.
- The HASP key used for the Alma PowerNest software in the ArtiosCAD rubbering layout can not be recognized by Citrix or TS and must be used on a client not connected to the Citrix server.
- 64-bit Citrix has not been tested in any way.
- Many users are planning to deploy [VMWare ESX-based solutions, Hyper V \(Windows Server Virtualization\), Citrix XenServer or other hypervisor technology](#). Esko has *not* officially certified ArtiosCAD for use in this environment, however, Esko does not prevent its use as long as the customer accepts responsibility for deployment and support of the environment.
- Artioscad 20 has been certified for [VMware Fusion v7](#). The customer may run later versions of his own accord on hardware and OS of his choosing, but Esko provides no warranty of the resulting combination. The preferred 3D rendering mode is OpenGL but use Direct3D in the event of unforeseen issues. Virtualized 3D rendering will not provide the same performance as native hardware.
- For native windows applications, [the 3D Rendering Option is recommended to be set to OpenGL for full 3D functionality](#). Use of OpenGL for Bitmaps should also be enabled.
- [3D graphics cards...](#) newer computers often come with some form of switchable graphics technology. This means that there are two or more video cards that switch off doing rendering duties on the system. Because of this, it is entirely possible that ArtiosCAD will be run using the low end, power saving chip. This drastically lowers performance, and may introduce issues when working within ArtiosCAD 3D. It is sometimes also possible that the current chip changes, which can lead to all sorts of stability issues. It is recommended that the user go to the control panel controlling the graphics cards (NVidia Control Panel or AMD Catalyst Control Center) and create a profile for ArtiosCAD so it will use the high end chip always.

A number of rendering issues with NVidia cards and openGL have been raised. Changes were made to what is believed to be an improvement in the error handling of newer NVidia cards particularly those with dual graphic cards.

- Since its inception, Artioscad has provided a [database schema](#) that has always been backwards compatible with previous versions of Artioscad and 3rd party applications. An ArtiosCAD enterprise edition has now been released and utilizes a new database backend (WebCenter). It is expected that the database functionality for the conventional ArtiosCAD edition will be frozen at its current level. New design functionality will continue to be added. It is expected that a single database edition will be created in the future.