
DEPARTMENT OF THE ARMY TECHNICAL MANUAL

OPERATOR'S, ORGANIZATIONAL, DS AND GS MAINTENANCE
REPAIR PARTS AND SPECIAL TOOLS LISTS

PISTOL, CALIBER .38, AUTOMATIC:
COLT, GOLD CUP NATIONAL MATCH
(1005-859-0458)

PISTOL, CALIBER .45, AUTOMATIC:
COLT, GOLD CUP NATIONAL MATCH
(1005-591-8046)

PISTOL, CALIBER .32, AUTOMATIC:
COLT, MODEL M, W/E
(1005-317-2469)

PISTOL, CALIBER .22, AUTOMATIC:
HI-STANDARD, SUPERMATIC TOURNAMENT
(1005-976-9231)

PISTOL, CALIBER .22, AUTOMATIC:
SMITH AND WESSON, MODEL 41
(1005-532-3025)

PISTOL, CALIBER .22, AUTOMATIC:
SMITH AND WESSON, MODEL 46
(1005-831-1267)

PISTOL, CALIBER .38, AUTOMATIC:
SMITH AND WESSON, MODEL 52
(1005-971-5039)

HEADQUARTERS, DEPARTMENT OF THE ARMY
October 1971

*This manual contains copyright
Material reproduced by permission of:*

*Colt's Patent Fire Arms and
Manufacturing Co., Inc.
(Figures 1, 2, 3, 8, 9, 10,
11, 12, 13, 14, 15 and 16)*

*The High Standard Manufacturing Corp.
(Figures 4, 17, 18, 19 and 20)*

*Smith and Wesson, Inc.
(Figures 5, 6, 7, 21, 22, 23, 24,
25, 26, 27, 28, 29, 30, 31, 32, and 33)*

*National Rifle Association of
America and the American Rifleman
(Figures 23 and 27)*

TECHNICAL MANUAL

No. 9-1005-206-14P/3



HEADQUARTERS
DEPARTMENT OF THE ARMY
Washington, D.C., 6 October 1971

OPERATOR'S ORGANIZATIONAL, DS, AND GS, MAINTENANCE

REPAIR PARTS AND SPECIAL TOOLS LISTS

PISTOL, CALIBER .38, AUTOMATIC:

COLT, GOLD CUP NATIONAL MATCH

PISTOL, CALIBER .45, AUTOMATIC:

COLT, GOLD CUP NATIONAL MATCH

PISTOL, CALIBER .32, AUTOMATIC:

COLT, MODEL M, W/E

PISTOL, CALIBER .22, AUTOMATIC:

HI-STANDARD, SUPERMATIC TOURNAMENT

PISTOL, CALIBER .22, AUTOMATIC:

SMITH AND WESSON, MODEL 41

PISTOL, CALIBER .22, AUTOMATIC:

SMITH AND WESSON, MODEL 46

PISTOL, CALIBER .38, AUTOMATIC:

SMITH AND WESSON, MODEL 52

This manual is current as of 15 September 1971

*This manual supersedes TM 9-1005-206-14P/3, 20 March 1963, including changes.

	<i>Page</i>	<i>Illus Figure</i>
Section I. Introduction.....	3	
Section II. Repair parts list	13	
Section III. Special tools list.....	15	
Section IV. Repair parts list	17	
Pistol, Caliber .38, Automatic, Colt Gold Cup National Match		
Major groups and assemblies.....	9	
Magazine assembly	10	
Slide group.....	11	
Receiver group	12	
Pistol, Caliber .45 Automatic, Colt Gold Cup National Match		
Major groups and assemblies.....	13	
Magazine assembly	14	
Slide group.....	15	
Receiver group	12	
Pistol, Caliber .32 Automatic, Colt Model M		
Magazine assembly	16	
Pistol, Caliber .22 Automatic, Hi-Standard Supermatic Tournament		
Major groups and assemblies.....	17	
Magazine assembly	18	
Slide group.....	19	
Barrel and receiver group	20	
Pistol, Caliber .22, Automatic, Smith and Wesson, Model 41		
Major groups and assemblies.....	21	
Magazine assembly	22	
Barrel group	23	
Slide assembly.....	24	
Receiver group	25	
Pistol, Caliber .22, Automatic. Smith and Wesson, Model 46		
Major groups and assemblies.....	26	
Magazine assembly	22	
Barrel group	27	
Slide assembly.....	28	
Receiver group	29	
Pistol, Caliber .38, Automatic Smith and Wesson, Model 52		
Major groups and assemblies.....	30	
Magazine assembly	31	
Slide and barrel group	32	
Receiver assembly	33	
Section V. Special tools list.....	39	
Section VI. Federal stock number and reference number index	61	

Section I. INTRODUCTION

1. Scope

This manual lists repair parts, special tools, and support equipment required for the performance of

organizational, direct support and general support maintenance of commercial pistols. See figures 1 through 7.

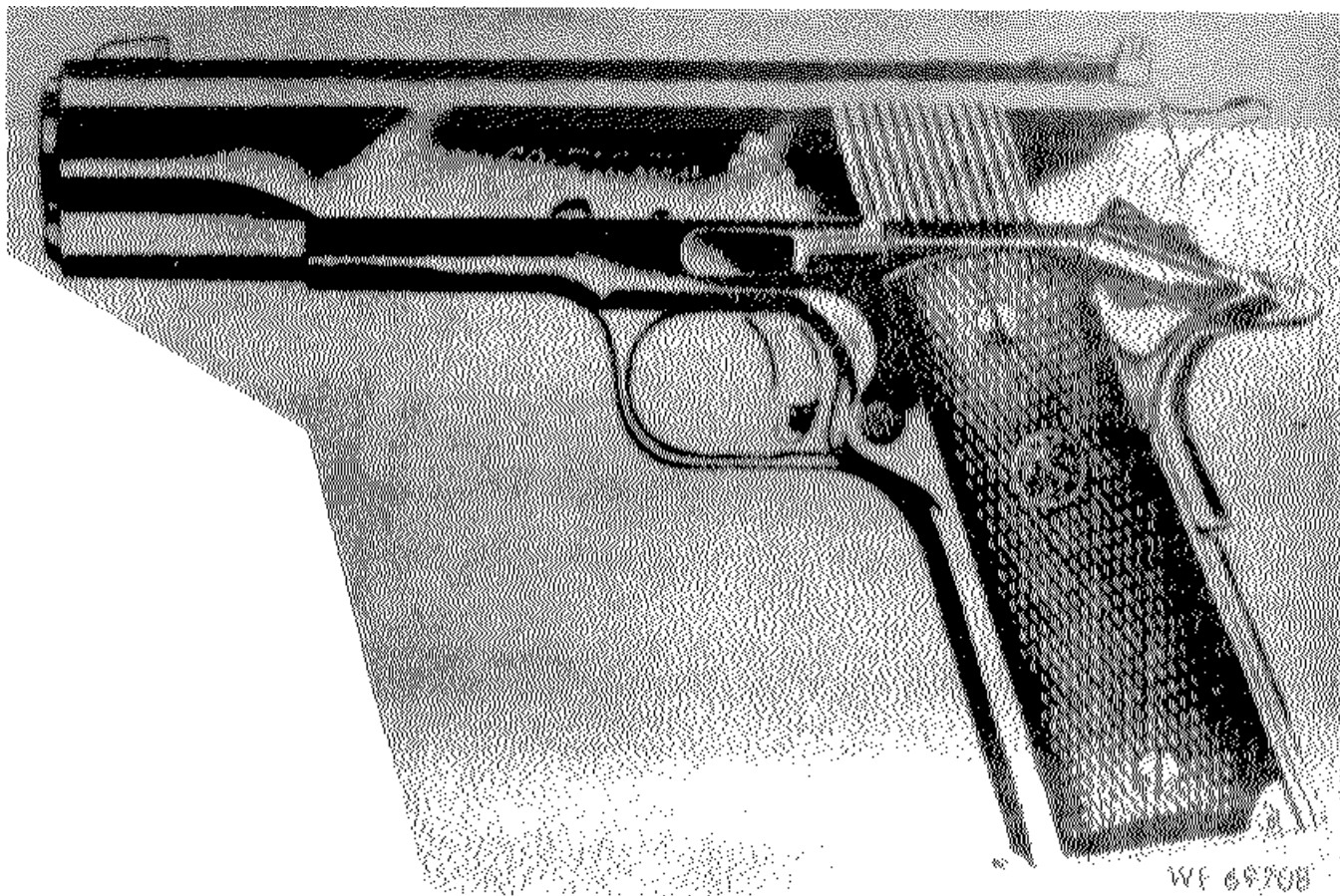


Figure 1. Gold Cup National Match Colt caliber .38 automatic pistol, 5-inch barrel—left side view



Figure 2. Gold Cup National Match Colt caliber .45 automatic pistol, 5-inch barrel—left side view.

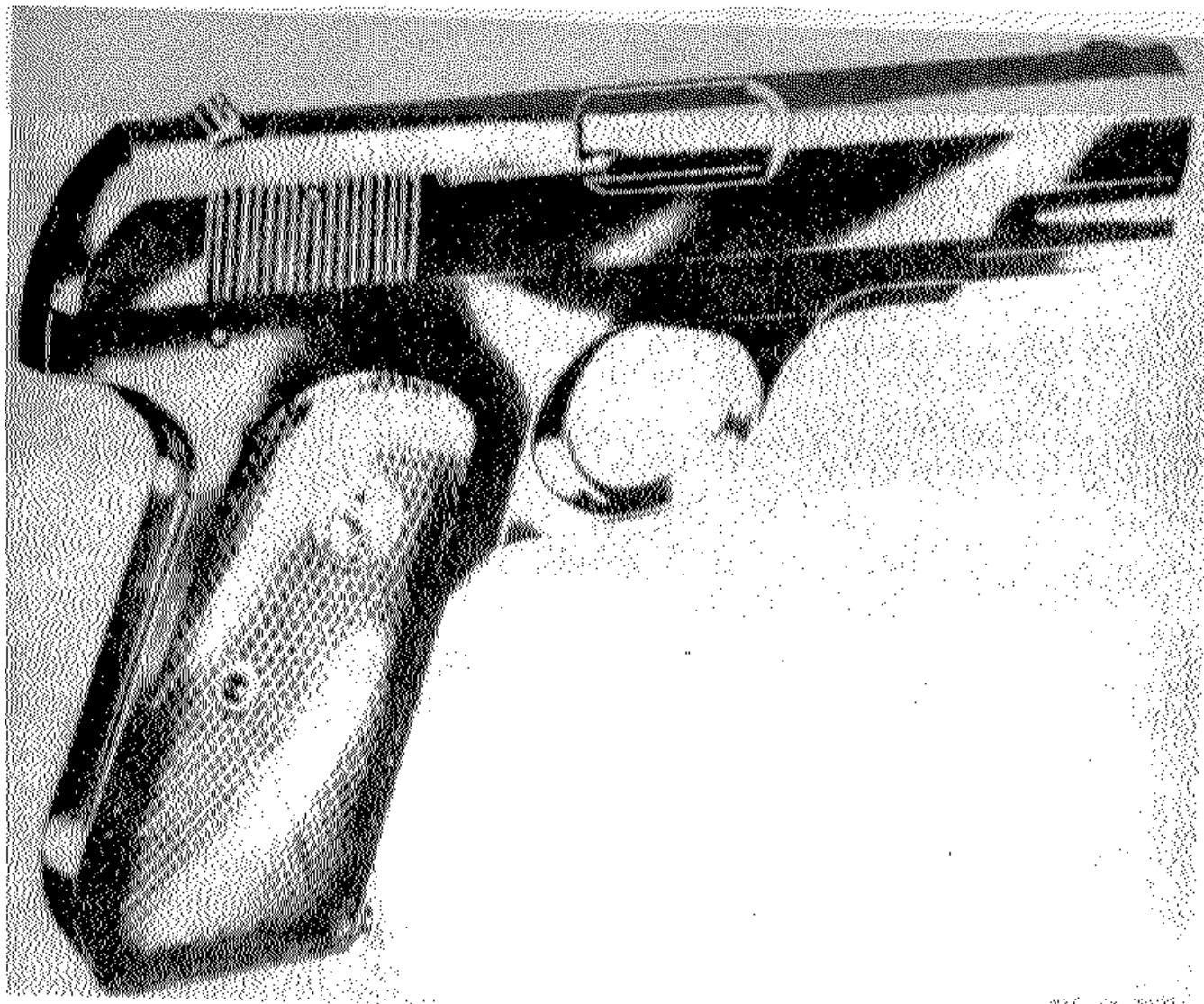


Figure 3. *Colt Caliber .32 Automatic Pistol, 3 3/4-inch barrel—right side view.*

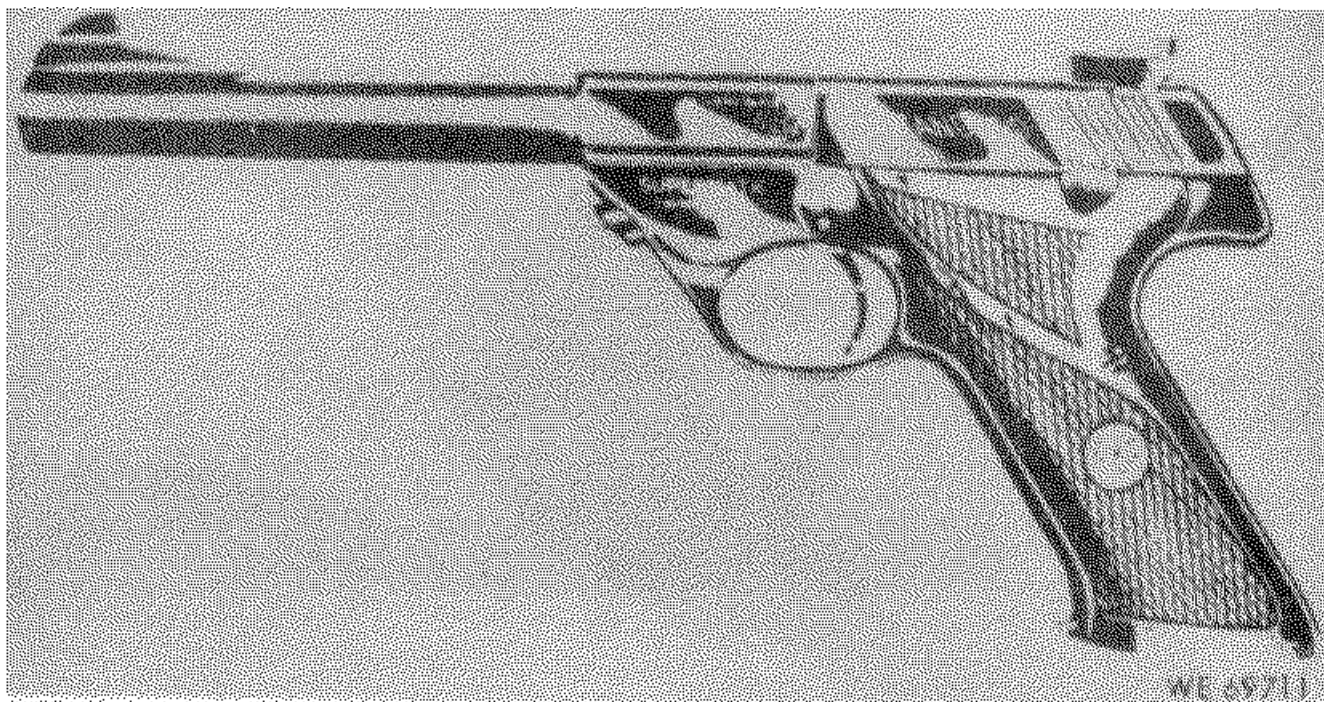


Figure 4. Supermatic Tournament Hi-Standard, caliber .22 automatic pistol- 6 3/4-inch barrel—left side view.



Figure 5. Model 41, Smith and Wesson caliber .22 automatic pistol, 7-3/8-inch barrel—right side view.



Figure 6. Model 46, Smith and Wesson, caliber .22 automatic pistol, 7-inch barrel—right side view.

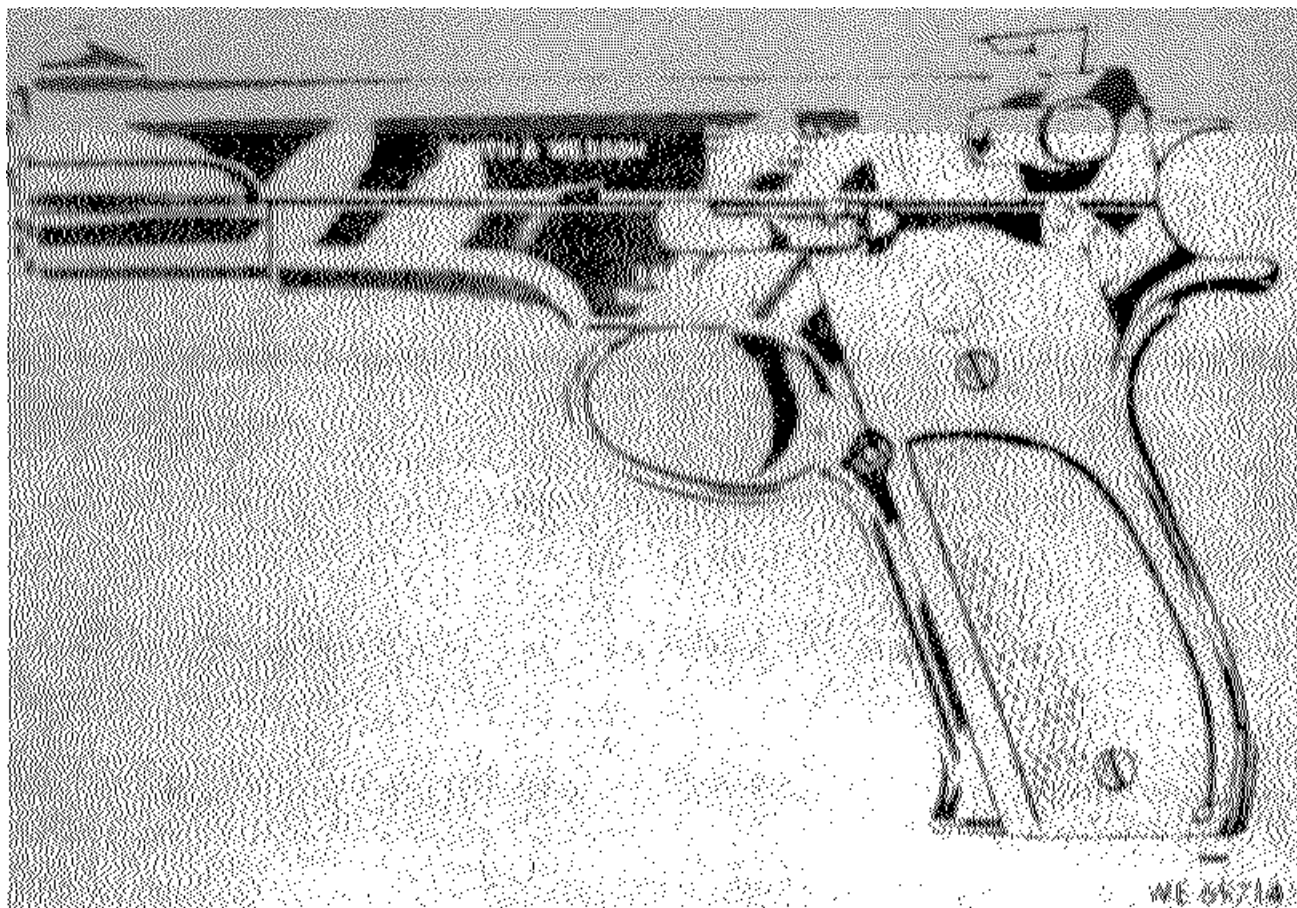


Figure 7. Model 52, Smith and Wesson, caliber .38 automatic pistol, 5-inch barrel—left side view.

2. General

This Repair Parts, and Special Tools List is divided into the following sections:

- a. *Basic Issue Items List.* Not applicable.
- b. *Items Troop Installed or Authorized List.* Not applicable.
- c. *Repair Parts—Section II.* A list of Repair Parts authorized at the organizational level for the performance of maintenance. It also includes parts which must be removed for replacement of the authorized parts. Parts lists are composed of functional groups in ascending numerical sequence, with the parts in each group listed in figure and item number sequence.
- d. *Special Tools List—Section III.* A list of special tools, test and support equipment authorized for the performance of maintenance at the organizational level.
- e. *Repair Parts List—Section IV.* A list of repair parts authorized at the direct support and general support levels for the performance of maintenance. The list also includes parts which must be removed for the replacement of the authorized parts. Parts lists are composed of functional groups in ascending numerical sequence, with parts in each group listed in figure and item number sequence.
- f. *Special Tools List—Section V.* A list of special tools, test and support equipment authorized for the performance of maintenance at the direct support and general support levels.
- g. *Federal Stock Number and Reference Number Index—Section VI.* A list, in ascending numerical sequence, of all Federal stock numbers appearing in the listings, followed by a list, in alphameric sequence, of all reference numbers appearing in the listings. Federal stock number and reference numbers are cross-referenced to each illustration figure and item number appearance.

3. Explanation of Columns

The following provides an explanation of columns found in the tabular listings.

a. *Source, Maintenance and Recoverability Codes (SMR).*

(1) Source Code. Indicates the source for the listed item. Source codes are:

<i>Code</i>	<i>Explanation</i>
P	Repair parts, special tools and test equipment supplied from the GSA/DSA, or Army supply system, and authorized for use at indicated maintenance categories.
P2	Repair parts, special tools and test equipment which are procured and stocked for insurance purposes because the combat or military essentially of the end item dictates that a minimum quantity be available in the supply system.

<i>Code</i>	<i>Explanation</i>
P9	Assigned to items which are NSA design controlled: unique repair parts. special tools. test. measuring, and diagnostic equipment which are stocked and supplied by the Army COMSEC Logistic System and which are not subject to the provisions of AR 380-41
P10	Assigned to items which are NSA design controlled: special tools, test, measuring and diagnostic equipment for COMSEC support. which are accountable under the provisions of AR 380-41, and which are stocked and supplied by the Army COMSEC Logistic System.
M	Repair parts, special tools and test equipment which are not procured or stocked as such in the supply system but are to be manufactured at indicated maintenance levels.
A	Assemblies which are not procured or stocked as such but are made up of two or more units Such component units carry individual stock numbers and descriptions, are procured and stocked separately, and can be assembled to form the required assembly at indicated maintenance categories
X	Parts and assemblies that are not procured or stocked because the failure rate is normally below that of the applicable end item or component The failure of such part or assembly should result in retirement of the end item from the supply system
X1	Repair Parts which are not procured or stocked. The requirement for such items will be filled by the next higher assembly or component.
X2	Repair parts, special tools, and test equipment which are not stocked and have no foreseen mortality. The indicated maintenance category requiring such repair parts will attempt to obtain the parts through cannibalization or salvage The item may be requisitioned, with exception data, from the end item manager for immediate use.
G	Major assemblies that are procured with PEMA funds for initial issue only as exchange assemblies at DS and GS level These assemblies will not be stocked above the DS and GS level or returned to depot supply level.

NOTE

Cannibalization or salvage may be used as a source of supply for any items source coded above except those coded X1 and aircraft support items as restricted by AR 700-42

(2) *Maintenance Code.* Indicates the lowest category of maintenance authorized to install the repair part and/or use the special tool or test equipment for each application. Capabilities of higher maintenance categories are considered equal or better. Maintenance codes are:

<i>Code</i>	<i>Explanation</i>
C	Crew/operator
O	Organizational maintenance
F	Direct support maintenance
H	General support maintenance
D	Depot maintenance.

(3) *Recoverability Code.* Indicates whether unserviceable items should be returned for recovery or salvage. Items not coded are nonrecoverable. Recoverability codes are:

Code	Explanation
R	Applied to repair parts. (assemblies and components special tools and test equipment which are considered economically repairable at direct and general support maintenance levels. When the item is no longer economically repairable. it is normally disposed of at the GS level. When supply considerations dictate, some of these repair parts may be listed for automatic return to supply for depot level repair as set forth in AR 710-50. When so listed. they will be replaced by supply on an exchange basis.
S	Repair Parts, Special Tools Test Equipment and assemblies which are economically repairable at DS and GS activities and which normally are furnished by supply on an exchange basis. When items are determined by a GSU to be uneconomically repairable, they will be evacuated to a depot for evaluation and analysis before final disposition.
T	Higher dollar value recoverable repair parts, special tools and test equipment which are subject to special handling and are issued on an exchange basis. Such items will be repaired or overhauled at depot maintenance activities only. No repair may be accomplished at a lower levels.
U	Repair Parts, Special Tools and Test Equipment specifically selected for salvage by reclamation units because of precious metal content, critical materials, high dollar value or reusable casings or castings.

b. *Federal Stock Number.* Indicates the Federal stock number assigned to the item and will be used for requisitioning purposes.

c. *Description.* Indicates the Federal item name and a minimum description required to identify the item. The last line indicates the reference number followed by the applicable Federal Supply Code for Manufacturer (FSCM) in parentheses. The FSCM is used as an element in item identification to designate manufacturer or distributor or Government agency, etc., and is identified in SB 708-42. Items that are included in kits and sets are listed below the name of the kit or set with quantity of each item in the kit or set indicated in front of the item name.

d. *Unit of Measure (U/M).* Indicates the standard or basic quantity by which the listed item is used in performing the actual maintenance function. This measure is expressed by a two-character alphabetical

abbreviation, e.g., ea, in, pr, etc., and is the basis used to indicate quantities and allowances, in subsequent columns. When the unit of measure differs from the unit of issue, the lowest unit of issue that will satisfy the required units of measure will be requisitioned.

e. *Quantity Incorporated in Unit.* Indicates the quantity of the item used in the breakout shown on the illustration figure, which is prepared for a functional group, subfunctional groups, or an assembly. A "V" appearing in this column in lieu of a quantity indicates that no specific quantity is applicable, e.g., shims, spacers, etc.

f. *15-Day Organizational Maintenance Allowances.*

(1) The allowance columns are divided into four sub-columns. Items authorized for use are identified with an asterisk in the allowance column opposite the first appearance of each item. Subsequent appearances have the letters "REF" in the allowance columns.

(2) Subsequent changes to allowance lists will be accomplished in accordance with AR 735-35. In addition the major commands will be authorized to approve reductions in stockage allowances (range and quantity). If additional items are considered necessary, recommendations should be forwarded to Commanding General, U.S. Army Weapons Command, ATTN: AMSWE-MAP, Rock Island, Illinois 61201, for exception or revision to the allowance list.

g. *30-Day DS/GS Maintenance Allowances.*

NOTE

Allowances in GS Column are for GS Maintenance only.

The allowance columns are divided into three subcolumns. Items authorized for use are identified with an asterisk in the allowance column opposite the first appearance of each item. Subsequent appearances of the same item will have the letters "REF" in the applicable allowance columns.

h. *1-Year Allowances per 100 Equipments/Contingency Planning Purposes.* This column indicates opposite the first appearance of each item the authorization for distribution and contingency planning purposes. The range of items indicates the authorization of all items required to provide for adequate support of 100 equipments for one year. Subsequent appearances of the same item will have the letters "REF" in this column.

i. *Depot Maintenance Allowance per 100 Equipments.* Not applicable.

j. *Illustration.* This column is divided as follows.

(1) *Figure Number.* Indicates the figure number of the illustration in which the item is shown.

(2) *Item Number.* Indicates the callout number used to reference the item on the illustration.

4. Special Information

a. Usable on codes are included in Column 3. Identifications of the usable on codes in this publication are:

<i>Code</i>	<i>Used on</i>
A	Pistol, Caliber .38, Automatic: Colt, Gold Cup National Match (1005-859-0458)
B	Pistol, Caliber .45, Automatic: Colt, Gold Cup National Match (1005-591-80461)
C	Pistol, Caliber .38, Automatic: Colt, Gold Cup National Match (1005-859-0458) Pistol, Caliber .45, Automatic: Colt, Gold Cup National Match (1005-591-80461)
D	Pistol, Caliber .32, Automatic: Colt, Model M W/E 1005-317-2469)
E	Pistol, Caliber .22, Automatic: Hi-Standard, Supermatic Tournament 11005-976-9231)
F	Pistol, Caliber .22, Automatic: Smith and Wesson, Model 41 (1005-532-3025)
G	Pistol, Caliber .22, Automatic: Smith and Wesson, Model 46 (1005-831-1267)
H	Pistol, Caliber .22, Automatic: Smith and Wesson, Model 41 (1005-532-3025) Pistol, Caliber .22, Automatic: Smith and Wesson, Model 46 (1005-831-1267)
I	Pistol, Caliber .38, Automatic: Smith and Wesson, Model 52 (1005-971-5039)
J	Pistol, Caliber .22, Automatic: Smith and Wesson, Model 41 (1005-532-3025) Pistol, Caliber .22, Automatic: Smith and Wesson, Model 46 (1005-831-1267) Pistol, Caliber .38, Automatic: Smith and Wesson, Model 52 (1005-971-5039)

b. Action change codes indicated in the left-hand margin of the listing page denote the following:

- N—Indicates an added item.
- C—Indicates a change in data.
- R—Indicates a change in FSN only.

c. The following maintenance supplies and materials are recommended for these pistols. Pertinent authorized documents are the proper requisitioning authority for these maintenance expendable supplies and materials.

<i>FSN</i>	<i>Nomenclature</i>
1005-288-3565	SWAB, SMALL ARMS CLEANING: 2 1/2 SQ (1000 PER PG)
1005-912-4248	SWAB, SMALL ARMS CLEANING: 1 1/4 SQ (1000 PER PG)

<i>FSN</i>	<i>Nomenclature</i>
6850-224-6657	CLEANING COMPOUND, RIFLE BORE: (RBC) (8 OZ CAN)
6850-281-1985	DRY CLEANING, SOLVENT: (SD) (1 GAL CAN)
9150-73-2389	LUBRICATING OIL, GENERAL PURPOSE: (PL SPECIAL) (4 OZ CAN)

5. How to Locate Repair Parts

a. When Federal stock number or reference number is unknown:

(1) *First.* Using the table of contents determine the functional group within which the repair part belongs. This is necessary since illustrations are prepared for functional groups and listings are divided into the same groups.

(2) *Second.* Find the illustration covering the functional group to which the repair part belongs.

(3) *Third.* Identify the repair part on the illustration and note the illustration figure and item number of the repair part.

(4) *Fourth.* Using the Repair Parts Listings. Find the functional group to which the repair part belongs and locate the illustration figure and item number noted on the illustration.

b. When Federal stock number or reference number is known:

(1) *First.* Using the Index of Federal Stock Numbers and Reference Numbers find the pertinent Federal stock number or reference number. This index is in ascending FSN sequence followed by a list of reference numbers in ascending alphabetic sequence, cross-referenced to the illustration figure number and item number.

(2) *Second.* Using the Repair Part Listing, find the functional group of the repair part and the illustration figure number and item number referenced in the Index of Federal Stock Numbers and Reference Numbers.

6. Abbreviations

Not applicable.

7. Recommendations for Maintenance Publications Improvements

You can improve this manual by calling attention to errors and by recommending improvements, using DA Form 2028 (Recommended Changes to Publications) or by a letter, and mailing directly to Commanding General, U.S. Army Weapons Command, ATTN: AMSWE-MAP, Rock Island, Illinois 61201.

Section II. REPAIR PARTS LIST

(1) SMR CODE	(2) FEDERAL STOCK NUMBER	(3) DESCRIPTION REFERENCE NUMBER & MFR. CODE USABLE ON CODE		(4) UNIT OF MEAS	(5) QTY INC IN UNIT	(6) 15 DAY ORGANIZATIONAL MAINTENANCE				(7) ILLUSTRATION		
						(a)	(b)	(c)	(d)	FIGURE NO.	ITEM NO/	
						1-5	6-20	21-50	51-100			
N	P O	1005-898-4203 PISTOL, CALIBER .38, AUTOMATIC: COLT, GOLD CUP NATIONAL MATCH MAGAZINE ASSEMBLY: 51989 (13629)	A	EA	1	*	*	*	*	9	1
	P O	1005-898-4210	STOP, SLIDE: 52374(13629)	A	EA	1	*	*	*	*	9	2
	P O	1005-831-1384	PISTOL, CALIBER .45, AUTOMATIC: COLT GOLD CUP NATIONAL MATCH MAGAZINE ASSEMBLY: 50198(13629)	B	EA	1	*	*	*	*	13	1
	P O	1005-831-1404	STOP, SLIDE: 51699(13629)	B	EA	1	*	*	*	*	13	2
	P O	1005-317-2482	PISTOL, CALIBER .32 AUTOMATIC: COLT, MODEL M MAGAZINE ASSEMBLY: 7312785(13629)		EA	1	*	*	*	*	16	
	P O	1005-704-8555	PISTOL, CALIBER .22, AUTOMATIC: HI-STANDARD SUPERMATIC TOURNAMENT MAGAZINE ASSEMBLY: 3038-M (28627)	E	EA	1	*	*	*	*	17	1
	P O	1005-831-1289	PISTOL, CALIBER .22, AUTOMATIC: SMITH AND WESSON, MODEL 41 MAGAZINE ASSEMBLY: 6527 (55358)	H	EA	1	*	*	*	*	21	1
	P O	1005-831-1289	PISTOL, CALIBER .22, AUTOMATIC: SMITH AND WESSON, MODEL 46 MAGAZINE ASSEMBLY: 6527(55358)	H	EA	1	*	*	*	*	26	1
	P O	1005-019-7901	PISTOL CALIBER .38, AUTOMATIC: SMITH AND WESSON, MODEL 52 MAGAZINE ASSEMBLY: 6184(55358)		EA	1	*	*	*	*	30	1

Section III. SPECIAL TOOLS LIST

(1) SMR CODE	(2) FEDERAL STOCK NUMBER	(3) DESCRIPTION REFERENCE NUMBER & MFR. CODE USABLE ON CODE		(4) UNIT OF MEAS	(5) QTY INC IN UNIT	(6) 15 DAY ORGANIZATIONAL MAINTENANCE				(7) ILLUSTRATION	
						(a)	(b)	(c)	(d)	FIGURE NO.	ITEM NO/
						1-5	6-20	21-50	51-100		
		TOOLS AND EQUIPMENT TOOLS AND EQUIPMENT ARE AUTHORIZED FOR CALIBER .32 PISTOL ONLY									
P O	1005-716-2132	BRUSH, CLEANING, SMALL ARMS BORE: 7162132(19205)		EA	**	*	*	*	*	8	1
P O	1005-556-4102	ROD, CLEANING, SMALL ARMS: M4 5564102 (19204)		EA	**	*		*	*	8	2

Section IV. REPAIR PARTS LIST

(1) SMR CODE	(2) FEDERAL STOCK NUMBER	(3) DESCRIPTION REFERENCE NUMBER & MFR. CODE USABLE ON CODE	(4) UNIT OF MEAS	(4) UNIT OF MEAS	(5) QTY INC IN UNIT	(6) 30 DAY DS MAINT ALLOWANCE			(7) 30-DAY GS MAINT ALLOWANCE			(8) 1-YR ALW PER 100 EQUIP CNTGCY	(9) DEPOT MAINT ALW PER 100 EQUIP	(10) ILLUSTRATION	
						(a)	(b)	(c)	(a)	(b)	(c)			(a)	(b)
						1-20	21-50	51-100	1-20	21-50	51-100			FIGURE NO.	ITEM NO/
		PISTOL, CALIBER .38, AUTOMATIC: COLT GOLD CUP NATIONAL MATCH MAJOR GROUPS AND ASSEMBLIES													
P O	1005-898-4203	MAGAZINE ASSEMBLY: 51989(13629)	A	EA	1	*	*	*	*	*	*	*	••	9	1
P O	1005-898-4210	STOP, SLIDE: 52374(13629)	A	EA	1	*	*	*	*	*	*	*	••	9	2
A F	SLIDE GROUP	A	EA	1	••	••	••	••	••	••	••	••	9	3
A F	RECEIVER GROUP	A	EA	1	••	••	••	••	••	••	••	••	9	4
		MAGAZINE ASSEMBLY													
X1 F	BASE:	A	EA	1	••	••	••	••	••	••	••	••	10	1
X1 F	RETAINER:	A	EA	1	••	••	••	••	••	••	••	••	10	2
P F	1005-898-4209	SPRING ASSEMBLY, MAGAZINE 52351(13629)	A	EA	1	*	*	*	*	*	*	*	••	10	3
X1 F	STUD:	A	EA	1	••	••	••	••	••	••	••	••	10	4
P F	1005-898-4202	FOLLOWER. MAGAZINE 51983 (13629)	A	EA	1	*	*	*	*	*	*	*	••	10	5
X1 F	TUBE:	A	EA	1	••	••	••	••	••	••	••	••	10	6
P F	1005-831-1392	PLUG, RECOIL SPRING: 51580(13629)	C	EA	1	*	*	*	*	*	*	*	••	11	1
P F	1005-898-4206	BUSHING, BARREL: 51993(13629)	A	EA	1	*	*	*	*	*	*	*	••	11	2
P F	1005-898-4196	SPRING, RECOIL: 50238(13629)	A	EA	1	*	*	*	*	*	*	*	••	11	3
P F	1005-831-1387	GUIDE, RECOIL SPRING 50205 (13629)	A	EA	1	*	*	*	*	*	*	*	••	11	4
P F	1005-898-4201	BARREL, 5-INCH: 51981(13629)	A	EA	1	*	*	*	*	*	*	*	••	11	5
P F	1005-898-4207	SPRING, BARREL RETURN- 51996 (13629)	A	EA	1	*	*	*	*	*	*	*	••	11	6
P F	1005-831-1401	STOP, FIRING PIN: 51679(13629)	A	EA	1	*	*	*	*	*	*	*	••	11	7
P F	1005-831-1382	PIN, FIRING: 50185 (13629)	C	EA	1	*	*	*	*	*	*	*	••	11	8
P F	1005-831-1383	SPRING, FIRING PIN: 50185 (13629)	C	EA	1	*	*	*	*	*	*	*	••	11	9
P F	1005-898-4205	EXTRACTOR: 51992(13629)	A	EA	1	*	*	*	*	*	*	*	••	11	10
P F	1005-831-1395	PIN, BASE, REAR SIGHT- 51647(13629)	C	EA	1	*	*	*	*	*	*	*	••	11	11

Section IV. REPAIR PARTS LIST -Continued

(1) SMR CODE	(2) FEDERAL STOCK NUMBER	(3) DESCRIPTION REFERENCE NUMBER & MFR. CODE USABLE ON CODE		(4)	(4)	(5)	(6)			(7)			(8)	(9)	(10)	
				UNIT OF MEAS	UNIT OF MEAS	QTY INC IN UNIT	30 DAY DS MAINT ALLOWANCE			30-DAY GS MAINT ALLOWANCE			1-YR	DEPOT	(a)	(b)
							(a)	(b)	(c)	(a)	(b)	(c)	ALW PER 100 EQUIP CNTGCY	MAINT ALW PER 100 EQUIP		
P F	1005-831-1394	SIGHT, ASSEMBLY, REAR: 51646(13629)	A	EA	1	*	*	*	*	*	*	*	*	••	11	12
P F	1005600-5169	SPRING, ELEVATING, REAR SIGHT: 51194(13629)	C	EA	1	*	*	*	*	*	*	*	*	••	11	13
P F	1005-831-1412	SCREW, ELEVATING, REAR SIGHT LONG: 51922(13629)	C	EA	1	*	*	*	*	*	*	*	*	••	11	14
P F	1005-898-4197	SPRING. ELEVATING SCREW DETENT. REAR SIGHT: 51683(13629)	C	EA	1	*	*	*	*	*	*	*	*	••	11	15
P F	1005600-5178	BALL, DETENT, REAR SIGHT: 51195 (13629)	C	EA	2	*	*	*	*	*	*	*	*	••	11	16
P F	1005400-5147	SCREW, WINDAGE, REAR SIGHT: 51192(13629)	C	EA	1	*	*	*	*	*	*	*	*	••	11	17
P F	1005-831-1396	BLADE, REAR SIGHT: 51648(13629)	C	EA	1	*	*	*	*	*	*	*	*	••	11	18
P F	1005-600-5160	SPRING, WINDAGE, REAR SIGHT: 51193(13629)	C	EA	1	*	*	*	*	*	*	*	*	••	11	19
X1 F	BASE, REAR SIGHT	A	EA	1	••	••	••	••	••	••	••	••	••	11	20
P F	1005-8984204	SLIDE ASSEMBLY: 51991(13629)	A	EA	1	*	*	*	*	*	*	*	*	••	11	21
P F	1005-831-1389	SIGHT, FRONT: 51272(13629)	C	EA	1	*	*	*	*	*	*	*	*	*	11	22
X1 F	SLIDE: RECEIVER GROUP	A	EA	1	••	••	••	••	••	••	••	••	••	11	23
R P F	5305-898-4199	SCREW, STOCK: 51833(13629)	A	EA	4	*	*	*	*	*	*	*	*	••	12	1
C P F	1005-869-7968	GRIP, PISTOL. LEFT HAND AND RIGHT HAND: 5910104(13629)	A	EA	2	*	*	*	*	*	*	*	*	••	12	2
P F	1005-898.4195	PIN, MAINSPRING HOUSING: 50163(13629)	A	EA	1	*	*	*	*	*	*	*	*	••	12	3
P F	1005-831-1393	HOUSING, MAINSPRING, FLAT 51591 (13629)	C	EA	1	*	*	*	*	*	*	*	*	••		
P F	1005-831-1371	PIN, MAINSPRING CAP: 50160(13629)	C	EA	1	*	*	*	*	*	*	*	*	••	12	5
P F	1005-831-1370	CAP, MAINSPRING: 50159 (13629)	C	EA	1	*	*	*	*	*	*	*	*	••	12	6
P F	1005-831-1411	MAINSRING: 51837 (13629)	C	EA	1	*	*	*	*	*	*	*	*	••	12	7
P F	1005-831-1373	RETAINER, PIN, MAINSPRING HOUSING: 50162(13629)	C	EA	1	*	*	*	*	*	*	*	*	••	12	8
P F	1005-831-1408	LOCK, SAFETY: 51817 (13629)	C	EA	1	*	*	*	*	*	*	*	*	••	12	9

Section IV. REPAIR PARTS LIST -Continued

(1) SMR CODE	(2) FEDERAL STOCK NUMBER	(3) DESCRIPTION REFERENCE NUMBER & MFR. CODE USABLE ON CODE		(4) UNIT OF MEAS	(4) UNIT OF MEAS	(5) QTY INC IN UNIT	(6) 30 DAY DS MAINT ALLOWANCE			(7) 30-DAY GS MAINT ALLOWANCE			(8) 1-YR ALW PER 100 EQUIP CNTGCY	(9) DEPOT MAINT ALW PER 100 EQUIP	(10) ILLUSTRATION	
							(a)	(b)	(c)	(a)	(b)	(c)			(a)	(b)
							1-20	21-50	51-100	1-20	21-50	51-100			FIGURE NO.	ITEM NO/
P F	1005-831-1365	SAFETY, GRIP: 50148(13629)	C	EA	1	*	*	*	*	*	*	*	••	12	10	
P F	1005-831-1381	SPRING, SEAR: 50179 (13629)	C	EA	1	*	*	*	*	*	*	*	••	12	11	
P F	1005-831-1368	PIN, HAMMER: 50153(13629)	C	EA	1	*	*	*	*	*	*	*	••	12	12	
P F	1005-831-1367	PIN, HAMMER STRUT: 50152(13629)	C	EA	1	*	*	*	*	*	*	*	••	12	13	
P F	1005-831-1366	STRUT, HAMMER: 50151(13629)	C	EA	1	*	*	*	*	*	*	*	••	12	14	
P F	1005-831-1400	HAMMER: 51678(13629)	C	EA	1	*	*	*	*	*	*	*	••	12	15	
P F	1005-831-1380	PIN, SEAR: 50178(13629)	C	EA	1	*	*	*	*	*	*	*	••	12	16	
P F	1005-898-4200	SEAR: 51866(13629)	A	EA	1	*	*	*	*	*	*	*	••	12	17	
P F	1005-831-1364	DISCONNECTOR: 50147(13629)	C	EA	1	*	*	*	*	*	*	*	••	12	18	
P F	1005-831-1403	TRIGGER ASSEMBLY: 51684 (13629)	C	EA	1	*	*	*	*	*	*	*	••	12	19	
P F	1005-898-4198	STOP, TRIGGER: 51687(13629)	C	EA	1	*	*	*	*	*	*	*	••	12	20	
X1 F	TRIGGER:	C	EA	1	••	••	••	••	••	••	••	••	12	21	
P F	1005-831-1375	PLUNGER, SAFETY LOCK: 50166(13629)	C	EA	1	*	*	*	*	*	*	*	••	12	22	
P F	1005-831-1374	SPRING, PLUNGER: 50165(13629)	C	EA	1	*	*	*	*	*	*	*	••	12	23	
P F	1005-831-1376	PLUNGER, SLIDE STOP: 50167(13629)	C	EA	1	*	*	*	*	*	*	*	••	12	24	
P F	1005-831-1405	TUBE, PLUNGER: 51812(13629)	C	EA	1	*	*	*	*	*	*	*	••	12	25	
P F	1005-831-1378	PIN, EJECTOR: 50170 (13629)	C	EA	1	*	*	*	*	*	*	*	••	12	26	
P F	1005-898-4208	INJECTOR: 51997 (13629)	A	EA	1	*	*	*	*	*	*	*	••	12	27	
P F	1005-831-1406	CATCH., MAGAZINE: 51815(13629)	C	EA	1	*	*	*	*	*	*	*	••	12	28	
P F	1005-831-1369	SPRING, MAGAZINE CATCH: 50156(13629)	C	EA	1	*	*	*	*	*	*	*	••	12	29	
P F	1005-831-1407	LOCK, MAGAZINE CATCH: 51810(13629)	C	EA	1	*	*	*	*	*	*	*	••	12	30	
P F	1005-831-1379	BUSHING, STOCK SCREW: 50173 (13629)	C	EA	4	*	*	*	*	*	*	*	••	12	31	
X	RECEIVER:	C	EA	1	••	••	••	••	••	••	*	••	12	32	

Section IV. REPAIR PARTS LIST -Continued

(1) SMR CODE	(2) FEDERAL STOCK NUMBER	(3) DESCRIPTION REFERENCE NUMBER & MFR. CODE USABLE ON CODE	(4) UNIT OF MEAS	(4) UNIT OF MEAS	(5) QTY INC IN UNIT	(6) 30 DAY DS MAINT ALLOWANCE			(7) 30-DAY GS MAINT ALLOWANCE			(8) 1-YR ALW PER 100 EQUIP CNTGCY	(9) DEPOT MAINT ALW PER 100 EQUIP	(10) ILLUSTRATION	
						(a)	(b)	(c)	(a)	(b)	(c)			(a)	(b)
						1-20	21-50	51-100	1-20	21-50	51-100			FIGURE NO.	ITEM NO/
P O	1005-831-1384	PISTOL, CALIBER .45 AUTOMATIC: COLT GOLD CUP NATIONAL MATCH MAJOR GROUPS AND ASSEMBLIES MAGAZINE ASSEMBLY: 50198 (13629)	B	EA	1	*	*	*	*	*	*	••	13	1	
P O	1005-831-1404	STOP, SLIDE: 51699(13629)	B	EA	1	*	*	*	*	*	*	••	13	2	
A F	SLIDE GROUP:	B	EA	1	*	*	*	*	*	*	••	13	3	
A F	RECEIVER GROUP MAGAZINE ASSEMBLY	B	EA	1	••	••	••	••	••	••	••	13	4	
P F	1005-831-1385	FOLLOWER, MAGAZINE: 50199 (13629)	B	EA	1	*	*	*	*	*	*	••	14	1	
P F	1005-831-1386	SPRING, MAGAZINE: 50200(13629)	B	EA	1	*	*	*	*	*	*	••	14	2	
P F	TUBE WITH BASE: SLIDE GROUP	B	EA	1	••	••	••	••	••	••	••	14	3	
P F	1005-831-1391	BUSHING, BARREL 51579 (13629)	B	EA	1	*	*	*	*	*	*	••	15	1	
P F	1005-831-1392	PLUG, RECOIL SPRING: 5158((13629)	C	EA	1	REF	REF	REF	REF	REF	REF	••	15	2	
P F	1005-707-6755	SPRING, RECOIL 50204 (13629)	B	EA	1	*	*	*	*	*	*	••	15	3	
P F	1005-831-1387	GUIDE, RECOIL SPRING 50205 (13629)	C	EA	1	REF	REF	REF	REF	REF	REF	••	15	4	
P F	1005-831-1390	BARREL, 5-INCH 51578(13629)	B	EA	1	*	*	*	*	*	*	••	15	5	
P F	1005-831-1363	PIN, BARREL LINK 50144 (13629)	B	EA	1	*	*	*	*	*	*	••	15	6	
P F	10005-831-1362	LINK, BARREL 50143(13629)	B	EA	1	*	*	*	*	*	*	••	15	7	
P F	1005-831-1401	STOP, FIRING PIN 51679(13629)	C	EA	1	REF	REF	REF	REF	REF	REF	••	15	8	
P F	1005-831-1382	PIN, FIRING: 50185(13629)	C	EA	1	REF	REF	REF	REF	REF	REF	••	15	9	
P F	1005-831-1383	SPRING, FIRING PIN: 50185(13629)	C	EA	1	REF	REF	REF	REF	REF	REF	••	15	10	
P F	1005-831-1399	EXTRACTOR: 51676(13629)	B	EA	1	*	*	*	*	*	*	••	15	11	
P F	1005-831-1395	PIN, BASE, REARSIGHT: 51647(13629)	C	EA	2	REF	REF	REF	REF	REF	REF	••	15	12	
P F	1005-831-1394	SIGHT ASSEMBLY, REAR: 51646(13629)	C	EA	1	REF	REF	REF	REF	REF	REF	••	15	13	

Section IV. REPAIR PARTS LIST -Continued

(1) SMR CODE	(2) FEDERAL STOCK NUMBER	(3) DESCRIPTION REFERENCE NUMBER & MFR. CODE USABLE ON CODE	(4) UNIT OF MEAS	(4) UNIT OF MEAS	(5) QTY INC IN UNIT	(6) 30 DAY DS MAINT ALLOWANCE			(7) 30-DAY GS MAINT ALLOWANCE			(8) 1-YR ALW PER 100 EQUIP CNTGCY	(9) DEPOT MAINT ALW PER 100 EQUIP	(10) ILLUSTRATION	
						(a)	(b)	(c)	(a)	(b)	(c)			(a)	(b)
						1-20	21-50	51-100	1-20	21-50	51-100			FIGURE NO.	ITEM NO/
P F	1005-600-5169	SPRING, ELEVATING, REAR SIGHT: 51194(13629)	C	EA	2	REF	REF	REF	REF	REF	REF	••	15	14	
P F	1005-831-1412	SCREW, ELEVATING, REAR SIGHT: 51922(13629)	C	EA	1	REF	REF	REF	REF	REF	REF	••	15	15	
P F	1005-600-5178	BALL, DETENT, REAR SIGHT: 51195(13629)	C	EA	2	REF	REF	REF	REF	REF	REF	••	15	16	
P F	1005-898-4197	SPRING, ELEVATING SCREW DETENT, REAR SIGHT: 51683, (13629)	C	EA	1	REF	REF	REF	REF	REF	REF	••	15	17	
P F	1005-600-5147	SCREW, WINDAGE, REAR SIGHT: 51192(13629)	C	EA	1	REF	REF	REF	REF	REF	REF	••	15	18	
P F	1005-831-1396	BLADE, REAR SIGHT: 51648(13629)	C	EA	1	REF	REF	REF	REF	REF	REF	••	15	19	
P F	1005-600-5160	SPRING, WINDAGE, REAR SIGHT: 51193(13629)	C	EA	1	REF	REF	REF	REF	REF	REF	••	15	20	
X1 F	BASE:	B	EA	1	••	••	••	••	••	••	••	15	21	
P F	1005-831-1388	SLIDE ASSEMBLY: 50271 (13629)	B	EA	1	*	*	*	*	*	*	••	15	22	
P F	1005-831-1389	SIGHT, FRONT: 51272(13629)	C	EA	1	REF	REF	REF	REF	REF	REF	••	15	23	
X1 F	SLIDE:	B	EA	1	••	••	••	••	••	••	••	15	24	
R P F	4305-898-4199	RECEIVER GROUP SCREW, STOCK: 51833(13629)	B	EA	4	REF	REF	REF	REF	REF	REF	••	12	1	
C	P F 1005-869-7968	GRIP, PISTOL: LEFT HAND AND RIGHT HAND 5910104 (13629)	C	EA	2	REF	REF	REF	REF	REF	REF	••	12	2	
A F	1005-898-4195	PIN, MAINSPRING HOUSING 50163 (13629)	C	EA	1	REF	REF	REF	REF	REF	REF	••	12	3	
P F	1005-831-1372	HOUSING, MAINSPRING, ROUND: 50161 (13629)	B	EA	1	*	*	*	*	*	*	••	12	4	
P F	1005-831-1393	OR HOUSING, MAINSPRING, FLAT: 51591 (13629)	C	EA	1	REF	REF	REF	REF	REF	REF	••	••	••	
P F	1005-831-1371	PIN, MAINSPRING CAP: 50160(13629)	C	EA	1	REF	REF	REF	REF	REF	REF	••	12	5	
P F	1005-831-1370	CAP, MAINSPRING: 50159(13629)	C	EA	1	REF	REF	REF	REF	REF	REF	••	12	6	
P F	1005-831-1411	MAINSRING: 51837 (12629)	C	EA	1	REF	REF	REF	REF	REF	REF	••	12	7	
P F	1005-831-1373	RETAINER, PIN, MAINSPRING HOUSING: 50162(13629)	C	EA	1	REF	REF	REF	REF	REF	REF	••	12	8	

Section IV. REPAIR PARTS LIST -Continued

(1) SMR CODE	(2) FEDERAL STOCK NUMBER	(3) DESCRIPTION REFERENCE NUMBER & MFR. CODE USABLE ON CODE		(4) UNIT OF MEAS	(4) UNIT OF MEAS	(5) QTY INC IN UNIT	(6) 30 DAY DS MAINT ALLOWANCE			(7) 30-DAY GS MAINT ALLOWANCE			(8) 1-YR ALW PER 100 EQUIP CNTGCY	(9) DEPOT MAINT ALW PER 100 EQUIP	(10) ILLUSTRATION	
							(a)	(b)	(c)	(a)	(b)	(c)			(a)	(b)
							1-20	21-50	51-100	1-20	21-50	51-100			FIGURE NO.	ITEM NO/
P F	1005-831-1408	LOCK, SAFETY: 51817(13629)	C	EA	1	REF	REF	REF	REF	REF	REF	REF	REF	••	12	9
P F	1005-831-1365	SAFETY, GRIP: 50148(13629)	C	EA	1	REF	REF	REF	REF	REF	REF	REF	REF	••	12	10
P F	1005-831-1381	SPRING, SEAR: 50179(13629)	C	EA	1	REF	REF	REF	REF	REF	REF	REF	REF	••	12	11
P F	1005-831-1368	PIN, HAMMER: 50153(13629)	C	EA	1	REF	REF	REF	REF	REF	REF	REF	REF	••	12	12
P F	1005-831-1367	PIN, HAMMER STRUT: 50152(13629)	C	EA	1	REF	REF	REF	REF	REF	REF	REF	REF	••	12	13
P F	1005-831-1366	STRUT, HAMMER: 50151 (13629)	C	EA	1	REF	REF	REF	REF	REF	REF	REF	REF	••	12	14
P F	1005-831-1400	HAMMER: 51678(13629)	C	EA	1	REF	REF	REF	REF	REF	REF	REF	REF	••	12	15
P F	1005-831-1380	PIN, SEAR: 50178(13629)	C	EA	1	REF	REF	REF	REF	REF	REF	REF	REF	••	12	16
P F	1005-831-1409	SEAR: 51826(13629)	B	EA	1	*	*	*	*	*	*	*	*	••	12	17
P F	1005-831-1364	DISCONNECTOR: 50147(13629)	C	EA	1	REF	REF	REF	REF	REF	REF	REF	REF	••	12	18
P F	1005-831-1403	TRIGGER ASSEMBLY: 51684 (13629)	C	EA	1	REF	REF	REF	REF	REF	REF	REF	REF	••	12	19
P F	1005-898-4198	STOP, TRIGGER: 51687 (136291)	C	EA	1	REF	REF	REF	REF	REF	REF	REF	REF	••	12	20
X1 F	TRIGGER:	C	EA	1	••	••	••	••	••	••	••	••	••	12	21
P F	1005-831-1375	PLUNGER, SAFETY LOCK: 50166 (13629)	C	EA	1	REF	REF	REF	REF	REF	REF	REF	REF	••	12	22
O F	1005-831-1374	SPRING, PLUNGER: 50165 (13629)	C	EA	1	REF	REF	REF	REF	REF	REF	REF	REF	••	12	23
P F	1005-831-1376	PLUNGER, SLIDE STOP: 50167(13629)	C	EA	1	REF	REF	REF	REF	REF	REF	REF	REF	••	12	24
P F	1005-831-1405	TUBE, PLUNGER: 51812(12629)	C	EA	1	REF	REF	REF	REF	REF	REF	REF	REF	••	12	25
P F	1005-831-1378	PIN EJECTOR. 50170(13629)	C	EA	1	REF	REF	REF	REF	REF	REF	REF	REF	••	12	26
P F	1005-831-1377	EJECTOR: 50169(13629)	B	EA	1	*	*	*	*	*	*	*	*	••	12	27
P F	1005-831-1406	CATCH, MAGAZINE: 51815(13629)	C	EA	1	REF	REF	REF	REF	REF	REF	REF	REF	••	12	28
P F	1005-831-1369	SPRING, MAGAZINE CATCH: 50156(13629)	C	EA	1	REF	REF	REF	REF	REF	REF	REF	REF	••	12	29

Section IV. REPAIR PARTS LIST -Continued

(1) SMR CODE	(2) FEDERAL STOCK NUMBER	(3) DESCRIPTION REFERENCE NUMBER & MFR. CODE USABLE ON CODE	(4) UNIT OF MEAS	(4) UNIT OF MEAS	(5) QTY INC IN UNIT	(6) 30 DAY DS MAINT ALLOWANCE			(7) 30-DAY GS MAINT ALLOWANCE			(8) 1-YR ALW PER 100 EQUIP CNTGCY	(9) DEPOT MAINT ALW PER 100 EQUIP	(10) ILLUSTRATION	
						(a)	(b)	(c)	(a)	(b)	(c)			(a)	(b)
						1-20	21-50	51-100	1-20	21-50	51-100			FIGURE NO.	ITEM NO/
P F	1005-831-1407	LOCK, MAGAZINE CATCH: 51816(13629)	C	EA	1	REF	REF	REF	REF	REF	REF	••	12	30	
P F	1005-831-1379	BUSHING, STOCK SCREW: 50173 (13629)	C	EA	4	REF	REF	REF	REF	REF	REF	••	12	31	
X	RECEIVER: PISTOL, CALIBER .32 AUTOMATIC: COLT MODEL M MAJOR GROUPS AND ASSEMBLIES	C	EA	1	••	••	••	••	••	••	••	12	32	
N	P O 1005-317-2482	MAGAZINE ASSEMBLY: 7312785(13629) PISTOL, CALIBER .22 AUTOMATIC: HI-STANDARD, SUPERMATIC TOURNAMENT MAJOR GROUPS AND ASSEMBLIES	D	EA	1	*	*	*	*	*	*	••	16	••	
P O	1005-704-8555	MAGAZINE ASSEMBLY: 3038-M (28627)	E	EA	1	*	*	*	*	*	*	••	17	1	
X	P F 1005-705-0095	BARREL ASSEMBLY: 10858(28627)	E	EA	1	*	*	*	*	*	*	••	17	2	
A F	SLIDE GROUP	E	EA	1	••	••	••	••	••	••	••	17	3	
A F	BARREL AND RECEIVER GROUP: MAGAZINE ASSEMBLY	E	EA	1	••	••	••	••	••	••	••	17	4	
P F	1005-896-6172	BUTTON, MAGAZINE 1524(28627)	E	EA	1	*	*	*	*	*	*	••	18	1	
P F	1005-600-4057	FOLLOWER, MAGAZINE- 1219(28627)	E	EA	1	*	*	*	*	*	*	••	18	2	
P F	1005-715-2093	SPRING, MAGAZINE 1120(28627)	E	EA	1	*	*	*	*	*	*	••	18	3	
X1 F	TUBE SLIDE GROUP	E	EA	1	*	*	*	*	*	*	••	18	4	
A F	SLIDE ASSEMBLY:	E	EA	1	••	••	••	••	••	••	••	19	1	
P F	5315-600-4387	PIN DRIVING SPRING PLUG AND FIRING PIN RETAINING 10095 (28627)	E	EA	2	8	8	8	8	*	*	••	19	2	
P F	1650-600-4382	PLUG, DRIVING SPRING: 10090(28627)	E	EA	1	*	*	*	*	*	*	••	19	3	
P F	1005-600-4326	SPRING, DRIVING: 1333(28627)	E	EA	1	*	*	*	*	*	*	••	19	4	
P F	1005-600-4123	PLUNGER, DRIVING SPRING: 1330(28627)	E	EA	1	*	*	*	*	*	*	••	19	5	
P F	1005-600-4464	PIN, FIRING: 10301(28627)	E	EA	1	*	*	*	*	*	*	••	19	6	
P F	1005-600-3913	SPRING, FIRING PIN: 320 (28627)	E	EA	1	*	*	*	*	*	*	••	19	7	

Section IV. REPAIR PARTS LIST -Continued

(1) SMR CODE	(2) FEDERAL STOCK NUMBER	(3) DESCRIPTION REFERENCE NUMBER & MFR. CODE USABLE ON CODE		(4) UNIT OF MEAS	(4) UNIT OF MEAS	(5) QTY INC IN UNIT	(6) 30 DAY DS MAINT ALLOWANCE			(7) 30-DAY GS MAINT ALLOWANCE			(8) 1-YR ALW PER 100 EQUIP CNTGCY	(9) DEPOT MAINT ALW PER 100 EQUIP	(10) ILLUSTRATION	
							(a)	(b)	(c)	(a)	(b)	(c)			(a)	(b)
							1-20	21-50	51-100	1-20	21-50	51-100			FIGURE NO.	ITEM NO/
P F	1005-704-8548	EXTRACTOR: 10270(28627)	E	EA	1	*	*	*	*	*	*	*	••	19	8	
P F	1005-600-4370	PLUNGER, EXTRACTOR: 3003(28627)	E	EA	1	*	*	*	*	*	*	*	••	19	9	
P F	1005-896-6173	SLIDE: 10074(28627)	E	EA	1	*	*	*	*	*	*	*	••	19	10	
P F	1005-654-5236	SPRING, EXTRACTOR: 1005(28627)	E	EA	1	*	*	*	*	*	*	*	••	19	11	
P F	1055-705-0131	SIGHT ASSEMBLY, REAR: 10940(28627)	E	EA	1	*	*	*	*	*	*	*	••	19	12	
P F	5315-602-1334	PIN, RETAINING, REAR SIGHT: 10650(28627)	E	EA	1	*	*	*	*	*	*	*	••	19	13	
P F	1005-602-1342	SCREW, ELEVATION. REAR SIGHT: 10660(28627)	E	EA	1	*	*	*	*	*	*	*	••	19	14	
P F	1005-602-1339	PLUNGER, ELEVATING, REAR SIGHT: 10654 (28627)	E	EA	1	*	*	*	*	*	*	*	••	19	15	
P F	1005-602-1340	SPRING, ELEVATING, RI AR SIGHT: 10657 (28627)	E	EA	2	*	*	*	*	*	*	*	••	19	16	
P F	1005-602-1350	PLUNGER, ELEVATING, DETENT, REAR SIGHT: 10665(29827)	E	EA	1	*	*	*	*	*	*	*	••	19	17	
P F	3110-602-1746	BALL, ELEVATING, REAR SIGHT: 10695 (28627)	E	EA	2	*	*	*	*	*	*	*	••	19	18	
P F	1005-602-1734	MEMBER, CROSS, REAR SIGHT: 10690(28627)	E	EA	1	*	*	*	*	*	*	*	••	19	19	
P F	1005-602-1401	SCREW, WINDAGE, REAR SIGHT: 10670(28627)	E	EA	1	*	*	*	*	*	*	*	••	19	20	
P F	1005-472-9920	SPRING, WINDAGE, REAR SIGHT: 10675(29627)	E	EA	1	*	*	*	*	*	*	*	••	19	21	
P F	1005-602-1733	PLUNGER, WINDAGE DETENT, REAR SIGHT: 10687(28627)	E	EA	1	*	*	*	*	*	*	*	••	19	22	
P F	1005-600-4097	SPRING, SLIDE LOCK: 1255(28627)	E	EA	1	*	*	*	*	*	*	*	••	19	23	
P F	5315-602-1493	PIN, LEAF PIVOT, REAR SIGHT: 10680(28627)	E	EA	1	*	*	*	*	*	*	*	••	19	24	
P F	1005-602-1333	LEAF, REAR SIGHT: 10645 (28627)	E	EA	1	*	*	*	*	*	*	*	••	19	25	
P F	1005-602-1332	BASE, REAR SIGHT: 10640(29827)	E	EA	1	*	*	*	*	*	*	*	••	19	26	
P F	1005-705-0095	BARREL AND RECEIVER GROUP BARREL ASSEMBLY: 10858(28627)	E	EA	1	REF	REF	REF	REF	REF	REF	REF	••	20	1	

Section IV. REPAIR PARTS LIST -Continued

(1) SMR CODE	(2) FEDERAL STOCK NUMBER	(3) DESCRIPTION REFERENCE NUMBER & MFR. CODE USABLE ON CODE		(4) UNIT OF MEAS	(4) UNIT OF MEAS	(5) QTY INC IN UNIT	(6) 30 DAY DS MAINT ALLOWANCE			(7) 30-DAY GS MAINT ALLOWANCE			(8) 1-YR ALW PER 100 EQUIP CNTGCY	(9) DEPOT MAINT ALW PER 100 EQUIP	(10) ILLUSTRATION	
							(a)	(b)	(c)	(a)	(b)	(c)			(a)	(b)
							1-20	21-50	51-100	1-20	21-50	51-100			FIGURE NO.	ITEM NO/
P F	1005-600-3976	SCREW, FRONT SIGHT: 1099 (28627)	E	EA	1	*	*	*	*	*	*	*	••	20	2	
P F	1005-602-1331	SIGHT, FRONT: 10625 (28627)	E	EA	1	*	*	*	*	*	*	*	••	20	3	
P F	5315-600-4390	PIN, BARREL STUD: 10115(28627)	E	EA	1	*	*	*	*	*	*	*	••	20	4	
P F	1005-600-4389	STUD, BARREL: 10110(28627)	E	EA	1	*	*	*	*	*	*	*	••	20	5	
X1 F	BARREL: 6-3/4-INCH:	E	EA	1	••	••	••	••	••	••	*	••	20	6	
P F	1005-602-0936	SCREW, GRIP: 10345 (28627)	E	EA	2	*	*	*	*	*	*	*	••	20	7	
P F	1005-602-0937	WASHER, GRIP SCREW: 10346(28627)	E	EA	2	*	*	*	*	*	*	*	••	20	8	
C	P F 1005-869-7970	STOCK, LEFT HAND AND RIGHT HAND: 5910300(28627)	E	EA	2	*	*	*	*	*	*	*	••	20	9	
C	P F 1005-869-7969	OR STOCK, LEFT HAND AND RIGHT HAND: 5910105(28627)	E	EA	2	*	*	*	*	*	*	*	••	••	••	
P F	5315-654-2055	PIN, MAGAZINE CATCH: 1123(28627)	E	EA	1	*	*	*	*	*	*	*	••	20	10	
P F	1005-602-0945	CATCH, MAGAZINE: 10390(28627)	E	EA	1	*	*	*	*	*	*	*	••	20	11	
P F	1005-602-0942	SPRING, MAGAZINE CATCH: 10375 (28627)	E	EA	1	*	*	*	*	*	*	*	••	20	12	
P F	1005-600-4373	LEVER, SLIDE LOCK: 10080(28627)	E	EA	1	*	*	*	*	*	*	*	••	20	13	
P F	1005-600-4097	SPRING, SLIDE LOCK: 1255 (28627)	E	EA	2	REF	REF	REF	REF	REF	REF	REF	••	20	14	
P F	1005-600-3974	SCREW, SIDE PLATE: 1046 (28627)	E	EA	1	*	*	*	*	*	*	*	••	20	15	
P F	1005-602-1268	PLATE, SIDE: 10485 (28627)	E	EA	1	*	*	*	*	*	*	*	••	20	16	
P F	1005-602-0985	SAFETY: 10420(28627)	E	EA	1	*	*	*	*	*	*	*	••	20	17	
P F	1005-602-1063	SPRING, SEAR BAR: 10461 (28627)	E	EA	1	*	*	*	*	*	*	*	••	20	18	
P F	1005-602-1767	BAR, SEAR AND TRIGGER PULL PIN: 10911(28627)	E	EA	1	*	*	*	*	*	*	*	••	20	19	
P F	1005-602-0986	WASHER, SAFETY SPACER: 10425 (29627)	E	EA	1	*	*	*	*	*	*	*	••	20	20	
P F	1005-600-4428	SCREW, ANTI-BACKLASH: 10175(28627)	E	EA	1	*	*	*	*	*	*	*	••	20	21	

Section IV. REPAIR PARTS LIST -Continued

(1) SMR CODE	(2) FEDERAL STOCK NUMBER	(3) DESCRIPTION REFERENCE NUMBER & MFR. CODE USABLE ON CODE	(4) UNIT OF MEAS	(4) UNIT OF MEAS	(5) QTY INC IN UNIT	(6) 30 DAY DS MAINT ALLOWANCE			(7) 30-DAY GS MAINT ALLOWANCE			(8) 1-YR ALW PER 100 EQUIP CNTGCY	(9) DEPOT MAINT ALW PER 100 EQUIP	(10) ILLUSTRATION	
						(a)	(b)	(c)	(a)	(b)	(c)			(a)	(b)
						1-20	21-50	51-100	1-20	21-50	51-100			FIGURE NO.	ITEM NO/
P F	1005-602-1301	PIN, TRIGGER: 10530(28627)	E	EA	1	*	*	*	*	*	*	*	••	20	22
P F	1005-602-1270	TRIGGER: 10520(28627)	E	EA	1	*	*	*	*	*	*	*	••	20	23
P F	5315-600-4436	PIN, HAMMER: 10210(28627)	E	EA	1	*	*	*	*	*	*	*	••	20	24
P F	5315-600-4442	PIN, HAMMER STRUT: 10225(28627)	E	EA	1	*	*	*	*	*	*	*	••	20	25
P F	1005-600-4435	HAMMER: 10200 (28627)	E	EA	1	*	*	*	*	*	*	*	••	20	26
P F	1005-600-4439	STRUT, HAMMER: 10220(28627)	E	EA	1	*	*	*	*	*	*	*	••	20	27
P F	1005-600-4440	RING, HAMMER STRUT: 10221 (28627)	E	EA	1	*	*	*	*	*	*	*	••	20	28
P F	5315-600-4443	PIN, ANCHOR, HAMMER STRUT: 10230 (28627)	E	EA	1	*	*	*	*	*	*	*	••	20	29
P F	1005-600-4438	SPRING, HAMMER: 10215(28627)	E	EA	1	*	*	*	*	*	*	*	••	20	30
P F	1005-602-1188	PIN, SEAR: 10465 (28627)	E	EA	1	*	*	*	*	*	*	*	••	20	31
P F	1005-602-1056	SEAR: 10440 (28627)	E	EA	1	*	*	*	*	*	*	*	••	20	32
P F	5315-600-4427	PIN, SEAR SPRING AND BARREL TAKEDOWN PLUNGER: 10135(28627)	E	EA	2	*	*	*	*	*	*	*	••	20	33
P F	1005-602-1207	SPRING, SEAR: 10471(28627)	E	EA	1	*	*	*	*	*	*	*	••	20	34
P F	1005-400-4392	PLUNGER, BARREL TAKEDOWN: 10120(28727)	E	EA	1	*	*	*	*	*	*	*	••	20	35
P F	1005-600-4426	SPRING, BARREL TAKEDOWN PLUNGER: 10130(28627)	E	EA	1	*	*	*	*	*	*	*	••	20	36
P F	1005-600-4432	WASHER, ANTI-BACKLASH DETENT: 10180(28627)	E	EA	1	*	*	*	*	*	*	*	••	20	37
P F	5315-600-4450	PIN, RETAINING EJECTOR: 10255 (28627)	E	EA	1	*	*	*	*	*	*	*	••	20	38
P F	1005-980-1740	EJECTOR, BLADE TYPE: 10251 (28627)	E	EA	1	*	*	*	*	*	*	*	••	20	39
P F	1005-600-4447	EJECTOR, HOLLOW PIN: 10250(28627)	E	EA	1	*	*	*	*	*	*	*	••	••	••
P F	1005-600-4449	EJECTOR, STUD TYPE: 10252 (28627)	E	EA	1	*	*	*	*	*	*	*	••	••	••
X	RECEIVER:	E	EA	1	••	••	••	••	••	••	••	••	20	40

Section IV. REPAIR PARTS LIST -Continued

(1) SMR CODE	(2) FEDERAL STOCK NUMBER	(3) DESCRIPTION REFERENCE NUMBER & MFR. CODE USABLE ON CODE	(4) UNIT OF MEAS	(4) UNIT OF MEAS	(5) QTY INC IN UNIT	(6) 30 DAY DS MAINT ALLOWANCE			(7) 30-DAY GS MAINT ALLOWANCE			(8) 1-YR ALW PER 100 EQUIP CNTGCTY	(9) DEPOT MAINT ALW PER 100 EQUIP	(10) ILLUSTRATION	
						(a)	(b)	(c)	(a)	(b)	(c)			(a)	(b)
						1-20	21-50	51-100	1-20	21-50	51-100			FIGURE NO.	ITEM NO/
P O	1005-831-1289	PISTOL, CALIBER .22, AUTOMATIC: SMITH AND WESSON, MODEL 41 MAJOR GROUPS AND ASSEMBLIES MAGAZINE ASSEMBLY. 6527(55358)	H	EA	1	*	*	*	*	*	*	*	••	21	1
A F	BARREL GROUP:	F	EA	1	••	••	••	••	••	••	••	••	21	2
A F	SLID: ASSEMBLY:	F	EA	1	••	••	••	••	••	••	••	••	21	3
A F	RECEIVER GROUP	F	EA	1	••	••	••	••	••	••	••	••	21	4
P F	1005-831-1290	MAGAZINE ASSEMBLY PLATE, BUTT, MAGAZINE: 6528 (55358)	H	EA	1	*	*	*	*	*	*	*	••	22	1
P F	1005-831-1298	PLUNGER, MAGAZINE SPRING: 6539(55358)	H	EA	1	*	*	*	*	*	*	*	••	22	2
P F	1005-831-1297	SPRING, MAGAZINE 6538(55358)	H	EA	1	*	*	*	*	*	*	*	••	22	3
P F	1005-831-1342	PIN, MAGAZINE 6589(55358)	H	EA	1	*	*	*	*	*	*	*	••	22	4
P F	1005-831-1296	FOLLOWER, MAGAZINE: 6536(55358)	H	EA	1	*	*	*	*	*	*	*	••	22	5
P F	1005-831-1299	TUBE, MAGAZINE: 6540(55358)	H	EA	1	*	*	*	*	*	*	*	••	22	6
P F	1005-831-1278	BARREL GROUP SCREW, MUZZLE BRAKE: 6511(55358)	F	EA	1	*	*	*	*	*	*	*	••	23	1
P F	1005-831-1277	BRAKE MUZZLE: 6510(55358)	F	EA	1	*	*	*	*	*	*	*	••	23	2
P F	1005-831-1293	MUZZLE, FALSE: 6531(55358)	F	EA	1	*	*	*	*	*	*	*	••	23	3
P F	1005-831-1272	WEIGHT, BARREL, 3/8 OUNCE: 6504(55358)	F	EA	1	*	*	*	*	*	*	*	••	23	4
P F	1005-831-1273	OR WEIGHT, BARREL, 1-3/4 OUNCE: 6505(55358)	F	EA	1	*	*	*	*	*	*	*	••	••	••
P F	1005-831-1315	PIN, PIVOT, REAR SIGHT: 6557(55358)	H	EA	1	*	*	*	*	*	*	*	••	23	5
P F	1005-831-1312	SIGHT ASSEMBLY, REAR: 6554(55358)	F	EA	1	*	*	*	*	*	*	*	••	23	6
P F	1005-831-1314	CLIP PIVOT, REAR SIGHT: 6556(55358)	H	EA	1	*	*	*	*	*	*	*	••	23	7
P F	1005-831-1319	SCREW, WINDAGE, REAR SIGHT: 6561(55358)	H	EA	1	*	*	*	*	*	*	*	••	23	8

Section IV. REPAIR PARTS LIST -Continued

(1) SMR CODE	(2) FEDERAL STOCK NUMBER	(3) DESCRIPTION REFERENCE NUMBER & MFR. CODE USABLE ON CODE		(4)	(4)	(5)	(6)			(7)			(8)	(9)	(10)	
				UNIT OF MEAS	UNIT OF MEAS	QTY INC IN UNIT	30 DAY DS MAINT ALLOWANCE			30-DAY GS MAINT ALLOWANCE			1-YR	DEPOT	(a)	(b)
							(a)	(b)	(c)	(a)	(b)	(c)	ALW PER 100 EQUIP CNTGCY	MAINT ALW PER 100 EQUIP		
			1-20	21-50	51-100	1-20	21-50	51-100				FIGURE NO.	ITEM NO/			
P F	1005-712-8985	SPRING, PLUNGER, REAR SIGHT: 5103(55358)	H	EA	2	*	*	*	*	*	*	*			23	9
P F	1005-712-9035	PLUNGER, REAR SIGHT ELEVATING NUT AND WINDAGE SCREW: 5104(55358)	H	EA	2	*	*	*	*	*	*	*	••		23	10
P F	1005-830-2516	NUT, WINDAGE, REAR SIGHT: 5107(55358)	H	EA	1	*	*	*	*	*	*	*	••		23	11
P F	1005-831-1316	SLIDE, REAR SIGHT: 6558(55358)	H	EA	1	*	*	*	*	*	*	*	••		23	12
P F	1005-830-2513	NUT, ELEVATING, REAR SIGHT: 5102(55358)	H	EA	1	*	*	*	*	*	*	*	••		23	13
P F	1005-830-2515	STUD, ELEVATING, REAR SIGHT: 5106(55358)	H	EA	1	*	*	*	*	*	*	*	••		23	14
P F	1005-830-2514	CLIP, SPRING, REAR SIGHT: 5105(55358)	H	EA	1	*	*	*	*	*	*	*	••		23	15
P F	1005-831-1313	SPRING, ELEVATING, REAR SIGHT: 6555 (55358)	H	EA	1	*	*	*	*	*	*	*	••		23	16
P F	1005-831-1311	BASE, REAR SIGHT: 6, 53 (35358 I	F	EA	1	*	*	*	*	*	*	*	••		23	17
P F	1005-831-1271	BARREL, 7-3/8-INCH: W/FRONT SIGHT: 6502(55358)	F	EA	1	*	*	*	*	*	*	*	••		23	18
P F	1005-831-1322	SLIDE ASSEMBLY GUIDE, RECOIL SPRING: 6564(55358)	H	EA	1	*	*	*	*	*	*	*	••		24	1
P F	1005-831-1321	SPRING, RECOIL: 6563 (55358)	H	EA	1	*	*	*	*	*	*	*	••		24	2
P F	1005-831-1276	PIN, BOLT: 6509(55358)	H	EA	1	*	*	*	*	*	*	*	••		24	3
P F	1005-831-1282	PIN, FIRING: 5515(55358)	H	EA	1	*	*	*	*	*	*	*	••		24	4
P F	1005-831-1283	SPRING, FIRING PIN: 6516(55358)	H	EA	1	*	*	*	*	*	*	*	••		24	5
P F	1005-831-1275	BOLT: 6508 (55358)	H	EA	1	*	*	*	*	*	*	*	••		24	6
P F	1005-831-1279	EXTRACTOR: 6512 (5358)	F	EA	1	*	*	*	*	*	*	*	••		24	7
P F	1005-831-1280	PLUNGER, EXTRACTOR: 6513(55358)	H	EA	1	*	*	*	*	*	*	*	••		24	8
P F	1005-831-1281	SPRING, EXTRACTOR: 6514(55358)	H	EA	1	*	*	*	*	*	*	*	••		24	9

Section IV. REPAIR PARTS LIST -Continued

(1) SMR CODE	(2) FEDERAL STOCK NUMBER	(3) DESCRIPTION REFERENCE NUMBER & MFR. CODE USABLE ON CODE		(4) UNIT OF MEAS	(4) UNIT OF MEAS	(5) QTY INC IN UNIT	(6) 30 DAY DS MAINT ALLOWANCE			(7) 30-DAY GS MAINT ALLOWANCE			(8) 1-YR ALW PER 100 EQUIP CNTGCY	(9) DEPOT MAINT ALW PER 100 EQUIP	(10) ILLUSTRATION	
							(a)	(b)	(c)	(a)	(b)	(c)			(a)	(b)
							1-20	21-50	51-100	1-20	21-50	51-100			FIGURE NO.	ITEM NO/
P F	1005-831-1325	SLIDE: 6568(55358)	F	EA	1	*	*	*	*	*	*	*	••	24	10	
P F	1005-831-1334	RECEIVER GROUP SCREW, STOCK: 6579(55358)	H	EA	2	*	*	*	*	*	*	*	••	25	1	
C P F	1005-869-8839	GRIP, LEFT HAND AND RIGHT HAND: WALNUT WITH SCREWS 5910102(55358)	F	EA	2	*	*	*	*	*	*	*	••	25	2	
P F	1005472-9103	PIN, RETAINER, MAINSPRING: 6537(53358)	H	EA	1	*	*	*	*	*	*	*	••	25	3	
P F	1005-831-1301	RETAINER, MAINSPRING: 6542(55358)	H	EA	1	*	*	*	*	*	*	*	••	25	4	
P F	1005-831-2202	MAINSRING: 6045 (55358)	H	EA	1	*	*	*	*	*	*	*	••	25	5	
P F	1005-831-1340	SCREW, SPRING PLATE, MANUAL SAFETY: 6586(55358)	H	EA	1	*	*	*	*	*	*	*	••	25	6	
P F	1005-831-1305	PLATE, SPRING, MANUAL SAFETY: 6547 (55358)	H	EA	1	*	*	*	*	*	*	*	••	25	7	
P F	1005-831-1304	SAFETY, MANUAL: 6545 (55358)	H	EA	1	*	*	*	*	*	*	*	••	25	8	
P F	1005-831-1330	PIN, STIRRUP: 6575(55358)	H	EA	1	*	*	*	*	*	*	*	••	25	9	
P F	1005-831-1329	STIRRUP: 6574(55358)	H	EA	1	*	*	*	*	*	*	*	••	25	10	
P F	1005-831-1287	HAMMER: 6523(55358)	F	EA	1	*	*	*	*	*	*	*	••	25	11	
P F	1005-831-1268	SPRING, INDICATOR: 6526(55358)	F	EA	1	*	*	*	*	*	*	*	••	25	12	
P F	1005-831-1347	INDICATOR: 6595 (55358)	F	EA	1	*	*	*	*	*	*	*	••	25	13	
P F	1005-831-1349	DISCONNECTOR, MAGAZINE: 6598(55358)	H	EA	1	*	*	*	*	*	*	*	••	25	14	
P F:	1005-831-1295	SPRING, DISCONNECTOR, MAGAZINE: 6535 (55358)	H	EA	1	*	*	*	*	*	*	*	••	25	15	
P F	1005-831-1348	BAR, TRIGGER: 6597 (55358)	H	EA	1	*	*	*	*	*	*	*	••	25	16	
P F	1005-831-1346	SPRING, TRIGGER BAR: 6593(55358)	H	EA	1	*	*	*	*	*	*	*	••	25	17	
P F	1005-831-1302	PIN, SEAR: 6543(55358)	H	EA	1	*	*	*	*	*	*	*	••	25	18	

Section IV. REPAIR PARTS LIST -Continued

(1) SMR CODE	(2) FEDERAL STOCK NUMBER	(3) DESCRIPTION REFERENCE NUMBER & MFR. CODE USABLE ON CODE		(4) UNIT OF MEAS	(4) UNIT OF MEAS	(5) QTY INC IN UNIT	(6) 30 DAY DS MAINT ALLOWANCE			(7) 30-DAY GS MAINT ALLOWANCE			(8) 1-YR ALW PER 100 EQUIP CNTGCY	(9) DEPOT MAINT ALW PER 100 EQUIP	(10) ILLUSTRATION	
							(a)	(b)	(c)	(a)	(b)	(c)			(a)	(b)
							1-20	21-50	51-100	1-20	21-50	51-100			FIGURE NO.	ITEM NO/
P F	1005-831-1324	SPRING, SEAR: 6566 (55358)	H	EA	1	*	*	*	*	*	*	*	••	25	19	
P F	1005-831-1323	SEAR: 6565 (55358)	H	EA	1	*	*	*	*	*	*	*	••	25	20	
P F	1005-715-7513	PIN GUARD AND TRIGGER: 6522(55358)	H	EA	2	*	*	*	*	*	*	*	••	25	21	
P F	1005-831-1286	GUARD: 6521(55358)	H	EA	1	*	*	*	*	*	*	*	••	25	22	
P F	1005-831-1336	SCREW, TRIGGER STOP: 6581 (55358)	H	EA	1	*	*	*	*	*	*	*	••	25	23	
P F	1005-831-1307	CAM, PAWL: 6549 (55358)	HI	EA	1	*	*	*	*	*	*	*	••	15	24	
P F	1005-831-1308	PLUNGER, PAWL CAM: 6550(55358)	H	EA	1	*	*	*	*	*	*	*	••	25	25	
P F	1005-831-1309	SPRING, PAWL CAM: 6551(55358)	H	EA	1	*	*	*	*	*	*	*	••	25	26	
P F	1005-831-1310	PIN, PAWL: 6552(55358)	H	EA	1	*	*	*	*	*	*	*	••	25	27	
P F	1005-831-1306	PAWL: 6548(55358)	H	EA	1	*	*	*	*	*	*	*	••	25	28	
P F	1005-831-1344	SPRING, TRIGGER AND PAWL: 6591 (55358)	H	EA	1	*	*	*	*	*	*	*	••	25	29	
P F	1005-831-1335	TRIGGER: 6580(55358)	H	EA	1	*	*	*	*	*	*	*	••	25	30	
P F	1005-831-1350	LEVER, ADJUSTING, TRIGGER PULL: 6602(55358)	F	EA	1	*	*	*	*	*	*	*	••	25	31	
P F	1005-831-1327	STOP ASSEMBLY, SLIDE AND EJECTOR:		EA	1	*	*	*	*	*	*	*	••	25	32	
	1005-831-1328	SPRING, SLIDE STOP: 6572(55358)	H	EA	1	*	*	*	*	*	*	*	••	25	33	
X1 F	STOP, SLIDE AND EJECTOR	H	EA	1	••	••	••	••	••	••	••	••	25	34	
P F	1005-831-1292	NUT, MAGAZINE CATCH: 6530(55358)	H	EA	1	*	*	*	*	*	*	*	••	25	35	
P F	1006 831-1291	CATCH, MAGAZINE: 6529(55358)	H	EA	1	*	*	*	*	*	*	*	••	25	36	
P F	1005-831-1268	PLUNGER, MAGAZINE CATCH: 6041(55358)	H	EA	1	*	*	*	*	*	*	*	••	25	37	
P F	1005-831-1269	SPRING, MAGAZINE CATCH: 6069(55358)	H	EA	1	*	*	*	*	*	*	*	••	25	38	
X	RECEIVER:	H	EA	1	••	••	••	••	••	••	••	••	25	39	

Section IV. REPAIR PARTS LIST -Continued

(1) SMR CODE	(2) FEDERAL STOCK NUMBER	(3) DESCRIPTION REFERENCE NUMBER & MFR. CODE USABLE ON CODE	(4) UNIT OF MEAS	(4) UNIT OF MEAS	(5) QTY INC IN UNIT	(6) 30 DAY DS MAINT ALLOWANCE			(7) 30-DAY GS MAINT ALLOWANCE			(8) 1-YR ALW PER 100 EQUIP CNTGCY	(9) DEPOT MAINT ALW PER 100 EQUIP	(10) ILLUSTRATION		
						(a)	(b)	(c)	(a)	(b)	(c)			(a)	(b)	
						1-20	21-50	51-100	1-20	21-50	51-100			FIGURE NO.	ITEM NO/	
P O	1005-831-1289	PISTOL, CALIBER .22, AUTOMATIC: SMITH AND WESSON, MODEL 46 MAJOR GROUPS AND ASSEMBLIES MAGAZINE, ASSEMBLY: 6527(55358)	H	EA	1	REF	REF	REF	REF	REF	REF	REF	••	26	1	
A F	BARREL GROUP	G	EA	1	••	••	••	••	••	••	••	••	••	26	2
A F	SLIDE ASSEMBLY:	G	EA	1	••	••	••	••	••	••	••	••	••	26	3
A F	RECEIVER GROUP: MAGAZINE ASSEMBLY	G	EA	1	••	••	••	••	••	••	••	••	••	26	4
P F	1005-831-1290	PLATE, BUTT, MAGAZINE: 6528 (55358)	H	EA	1	REF	REF	REF	REF	REF	REF	REF	••	22	1	
P F	1005-831-1298	PLUNGER, MAGAZINE SPRING: 6539(55358)	H	EA	1	REF	REF	REF	REF	REF	REF	REF	••	22	2	
P F	1005-831-1297	SPRING, MAGAZINE: 6538 (55358)	H	EA	1	REF	REF	REF	REF	REF	REF	REF	••	22	3	
P F	0005-831-1342	PIN, MAGAZINE: 6589(55358)	H	EA	1	REF	REF	REF	REF	REF	REF	REF	••	22	4	
P F	1005-831-1296	FOLLOWER, MAGAZINE: 6536(55358)	H	EA	1	REF	REF	REF	REF	REF	REF	REF	••	22	5	
P F	1005-831-12)9	TUBE, MAGAZINE: 6540(55358)	H	EA	1	REF	REF	REF	REF	REF	REF	REF	••	22	6	
P F	1005-831-1315	BARREL GROUP PIN, PIVOT, REAR SIGHT: 6557(55358)	H	EA	1	REF	REF	REF	REF	REF	REF	REF	••	27	1	
A F	SIGHT ASSEMBLY, REAR: G	G	EA	1	••	••	••	••	••	••	••	••	••	27	2
P F	1005-831-1314	CLIP, PIVOT, REAR SIGHT: 6556 (55358)	H	EA	1	REF	REF	REF	REF	REF	REF	REF	••	27	3	
P F	1005-831-1319	SCREW, WINDAGE, REAR SIGHT: 6561 (5558)	H	EA	1	REF	REF	REF	REF	REF	REF	REF	••	27	4	
P F	1005-712-8985	SPRING, PLUNGER, REAR SIGHT: 5103(55358)	H	EA	2	REF	REF	REF	REF	REF	REF	REF	••	27	5	
P F	1005-712-9035	PLUNGER, REAR SIGHT: 5104(55358)	H	EA	2	REF	REF	REF	REF	REF	REF	REF	••	27	6	
P F	1005-830-2516	NUT, WINDAGE, REAR SIGHT: 5107(55358)	H	EA	1	REF	REF	REF	REF	REF	REF	REF	••	27	7	
P F	1005-831-1316	SLIDE, REAR SIGHT: 6558(55358)	H	EA	1	REF	REF	REF	REF	REF	REF	REF	••	27	8	
P F	1005-830-2513	NUT, ELEVATING, REAR SIGHT: 5102(55358)	H	EA	1	REF	REF	REF	REF	REF	REF	REF	••	27	9	
P F	1005-830-2515	STUD, ELEVATING REAR SIGHT: 5106(55358)	H	EA	1	REF	REF	REF	REF	REF	REF	REF	••	27	10	

Section IV. REPAIR PARTS LIST -Continued

(1) SMR CODE	(2) FEDERAL STOCK NUMBER	(3) DESCRIPTION REFERENCE NUMBER & MFR. CODE USABLE ON CODE		(4) UNIT OF MEAS	(4) UNIT OF MEAS	(5) QTY INC IN UNIT	(6) 30 DAY DS MAINT ALLOWANCE			(7) 30-DAY GS MAINT ALLOWANCE			(8) 1-YR ALW PER 100 EQUIP CNTGCY	(9) DEPOT MAINT ALW PER 100 EQUIP	(10) ILLUSTRATION	
							(a)	(b)	(c)	(a)	(b)	(c)			(a)	(b)
							1-20	21-50	51-100	1-20	21-50	51-100			FIGURE NO.	ITEM NO/
P F	1005-830-2514	CLIP, SPRING, REAR SIGHT: 5105(55358)	H	EA	1	REF	REF	REF	REF	REF	REF	REF	REF	••	27	11
P F	1005-831-1313	SPRING, ELEVATING. REAR SIGHT: 6555 (55358)	H	EA	1	REF	REF	REF	REF	REF	REF	REF	REF	••	27	12
P F	1005-831-1320	BASE, REAR SIGHT: 6562 (55358)	G	EA	1	*	*	*	*	*	*	*	*	••	27	13
P F	1005-831-1326	BARREL, 7-INCH WITH FRONT SIGHT: 6569(55358)	G	EA	1	*	*	*	*	*	*	*	*	••	27	14
P F	1005-831-1322	SLIDE ASSEMBLY GUIDE, RECOIL SPRING: 6564(55358)	H	EA	1	REF	REF	REF	REF	REF	REF	REF	REF	••	28	1
P F	1005-831-1321	SPRING, RECOIL: 6563 (55358)	H	EA	1	REF	REF	REF	REF	REF	REF	REF	REF	••	28	2
P F	1005-831-1276	PIN, BOLT: 6509(55358)	H	EA	1	REF	REF	REF	REF	REF	REF	REF	REF	••	28	3
P F	1005-831-1282	PIN, FIRING: 6516(55358)	H	EA	1	REF	REF	REF	REF	REF	REF	REF	REF	••	28	4
P F	1005-831-1283	SPRING, FIRING PIN: 6516(55358)	H	EA	1	REF	REF	REF	REF	REF	REF	REF	REF	••	28	5
P F	1005-831-1275	BOLT: 6508(55358)	H	EA	1	REF	REF	REF	REF	REF	REF	REF	REF	••	28	6
P F	1005-831-1345	EXTRACTOR: 6592(55358)	G	EA	1	*	*	*	*	*	*	*	*	••	28	7
P F	1006 831-1280	PLUNGER, EXTRACTOR: 6513(55358)	H	EA	1	REF	REF	REF	REF	REF	REF	REF	REF	••	28	8
P F	1005-831-1281	SPRING, EXTRACTOR: 6514(55358)	H	EA	1	REF	REF	REF	REF	REF	REF	REF	REF	••	28	9
P F	1005-831-1317	SLIDE: 6559(55358)	G	EA	1	*	*	*	*	*	*	*	*	••	28	10
P F	1005-831-1334	RECEIVER GROUP SCREW, STOCK: 6579(55358)	H	EA	1	REF	REF	REF	REF	REF	REF	REF	REF	••	29	1
C P F	1005-869-7967	STOCK, LEFT HAND AND RIGHT HAND: 5910103(55358)	G	EA	2	REF	REF	REF	REF	REF	REF	REF	REF	••	29	2
P F	1005-472-9103	PIN, RETAINER, MAINSPRING: 6537(55358)	H	EA	1	REF	REF	REF	REF	REF	REF	REF	REF	••	29	3
P F	1005-831-1301	RETAINER, MAINSPRING: 6542(55358)	H	EA	1	REF	REF	REF	REF	REF	REF	REF	REF	••	29	4
P F	1005-831-2202	MAINSPRING: 6045(55358)	H	EA	1	REF	REF	REF	REF	REF	REF	REF	REF	••	29	5

Section IV. REPAIR PARTS LIST - Continued

(1) SMR CODE	(2) FEDERAL STOCK NUMBER	(3) DESCRIPTION REFERENCE NUMBER & MFR. CODE USABLE ON CODE	(4) UNIT OF MEAS	(4) UNIT OF MEAS	(5) QTY INC IN UNIT	(6) 30 DAY DS MAINT ALLOWANCE			(7) 30-DAY GS MAINT ALLOWANCE			(8) 1-YR ALW PER 100 EQUIP CNTGCTY	(9) DEPOT MAINT ALW PER 100 EQUIP	(10) ILLUSTRATION	
						(a)	(b)	(c)	(a)	(b)	(c)			(a)	(b)
						1-20	21-50	51-100	1-20	21-50	51-100			FIGURE NO.	ITEM NO/
P F	1005-831-1340	SCREW, SPRING PLATE, MANUAL SAFETY: 6586(55358)	H	EA	1	REF	REF	REF	REF	REF	REF	REF	••	29	6
P F	1005-831-1305	PLATE, SPRING, MANUAL SAFETY: 6547(55358)	H	EA	1	REF	REF	REF	REF	REF	REF	REF	••	29	7
C P F	1005-831-1304	SAFETY, MANUAL: 6545 (55358)	H	EA	1	REF	REF	REF	REF	REF	REF	REF	••	29	8
P F	1005-831-1330	PIN, STIRRUP: 6575(55358)	H	EA	1	REF	REF	REF	REF	REF	REF	REF	••	29	9
P F	1005-831-1329	STIRRUP: 6574 (55358)	H	EA	1	REF	REF	REF	REF	REF	REF	REF	••	29	10
C	P F 1005-831-1278	HAMMER: 6523(55358)	H	EA	1	REF	REF	REF	REF	REF	REF	REF	••	29	11
P F	1005-831-1349	DISCONNECTOR, MAGAZINE: 6598(55358)	H	EA	1	REF	REF	REF	REF	REF	REF	REF	••	29	12
P F	1005-831-1295	SPRING, DISCONNECTOR, MAGAZINE: 6535 (55358)	H	EA	1	REF	REF	REF	REF	REF	REF	REF	••	29	13
P F	1005-831-1348	BAR TRIGGER: 6597 (55358)	H	EA	1	REF	REF	REF	REF	REF	REF	REF	••	29	14
P F	1005-831-1346	SPRING, TRIGGER BAR: 6593(55358)	H	EA	1	REF	REF	REF	REF	REF	REF	REF	••	29	15
P F	1005-831-1302	PIN, SEAR: 6543(55358)	H	EA	1	REF	REF	REF	REF	REF	REF	REF	••	29	16
P F	1005-831-1324	SPRING, SEAR: 6566(66358)	H	EA	1	REF	REF	REF	REF	REF	REF	REF	••	29	17
P F	1005-831-1323	SEAR: 6565 (55358)	H	EA	1	REF	REF	REF	REF	REF	REF	REF	••	29	18
P F	1005-715-7513	PIN-GUARD AND TRIGGER: 6522 (55358)	H	EA	2	REF	REF	REF	REF	REF	REF	REF	••	29	19
P F	1005-831-1286	GUARD: 6521(55358)	H	EA	1	REF	REF	REF	REF	REF	REF	REF	••	29	20
P F	1005-831-1336	SCREW, TRIGGER STOP: 6581(55358)	H	EA	1	REF	REF	REF	REF	REF	REF	REF	••	29	21
P F	1005-831-1307	CAM PAWL: 6549(55358)	W	EA	1	REF	REF	REF	REF	REF	REF	REF	••	29	22
P F	1005-831-1308	PLUNGER, PAWL CAM: 6550(55358)	H	EA	1	REF	REF	REF	REF	REF	REF	REF	••	29	23
P F	1005-831-1309	SPRING, PAWL CAM: 6551(55358)	H	EA	1	REF	REF	REF	REF	REF	REF	REF	••	29	24
P F	1005-831-1310	PIN, PAWL: 6552(55358)	H	EA	1	REF	REF	REF	REF	REF	REF	REF	••	29	25

Section IV. REPAIR PARTS LIST - Continued

(1) SMR CODE	(2) FEDERAL STOCK NUMBER	(3) DESCRIPTION REFERENCE NUMBER & MFR. CODE USABLE ON CODE	(4) UNIT OF MEAS	(4) UNIT OF MEAS	(5) QTY INC IN UNIT	(6) 30 DAY DS MAINT ALLOWANCE			(7) 30-DAY GS MAINT ALLOWANCE			(8) 1-YR ALW PER 100 EQUIP CNTGCY	(9) DEPOT MAINT ALW PER 100 EQUIP	(10) ILLUSTRATION	
						(a)	(b)	(c)	(a)	(b)	(c)			(a)	(b)
						1-20	21-50	51-100	1-20	21-50	51-100			FIGURE NO.	ITEM NO/
P F	1005-831-1306	PAWL: 6548(53358)	H	EA	1	REF	REF	REF	REF	REF	REF	REF	••	29	26
P F	1005-831-1344	SPRING, TRIGGER AND PAWL: 6591(55358)	H	EA	1	REF	REF	REF	REF	REF	REF	REF	••	29	27
C P F	1005-831-1335	TRIGGER: 6580(55358)	H	EA	1	REF	REF	REF	REF	REF	REF	REF	••	29	28
C P F	1005-831-1327	STOP ASSEMBLY, SLIDE AND EJECTOR: 6570(55358)	H	EA	1	REF	REF	REF	REF	REF	REF	REF	••	29	29
P F	1005-831-1328	SPRING SLIDE STOP: 6572(55358)	H	EA	1	REF	REF	REF	REF	REF	REF	REF	••	29	30
X1 F	STOP, SLIDE, EJECTOR:	H	EA	1	••	••	••	••	••	••	••	••	29	31
P F	1005-831-1292	NUT, MAGAZINE CATCH: 6530(55358)	H	EA	1	REF	REF	REF	REF	REF	REF	REF	••	29	32
P F	1005-831-1291	CATCH, MAGAZINE: 6529(55358)	H	EA	1	REF	REF	REF	REF	REF	REF	REF	••	29	33
P F	1005-831-1268	PLUNGER MAGAZINE CATCH: 6041(55358)	H	EA	1	REF	REF	REF	REF	REF	REF	REF	••	29	34
P F	1005-831-1269	SPRING, MAGAZINE CATCH: 6069(55358)	H	EA	1	REF	REF	REF	REF	REF	REF	REF	••	29	35
X	RECEIVER: PISTOL, CALIBER .38, AUTOMATIC: SMITH AND WESSON, MODEL 52	H	EA	1	••	••	••	••	••	••	••	••	29	36
P O	1005-019-7901	MAJOR GROUPS AND ASSEMBLIES MAGAZINE ASSEMBLY: 6184(55358)	I	EA	1	*	*	*	*	*	*	*	••	30	1
A F	STOP ASSEMBLY SLIDE:	I	EA	1	••	••	••	••	••	••	••	••	30	2
A F	SLIDE AND BARREL GROUP:	I	EA	1	••	••	••	••	••	••	••	••	30	3
A F	RECEIVER ASSEMBLY: MAGAZINE ASSEMBLY	I	EA	1	••	••	••	••	••	••	••	••	30	4
P F	1005-019-7902	PLATE, BUTT, MAGAZINE: 6185(55358)	I	EA	1	*	*	*	*	*	*	*	••	31	1
P F	1005-019-7876	CATCH, MAGAZINE, BUTT PLATE: 6036(55358)	I	EA	1	*	*	*	*	*	*	*	••	31	2
P F	1005-019-7906	SPRING, MAGAZINE: 6189(55358)	I	EA	1	*	*	*	*	*	*	*	••	31	3
P F	1005-019-7905	PIN, MAGAZINE: 6188(55358)	I	EA	1	*	*	*	*	*	*	*	••	31	4
P F	1005-019-7904	FOLLOWER, MAGAZINE: 6187 (55358)	I	EA	1	*	*	*	*	*	*	*	••	31	5
P F	1005-019-7907	TUBE, MAGAZINE: 6190(55358)	I	EA	1	*	*	*	*	*	*	*	••	31	6

Section IV. REPAIR PARTS LIST - Continued

(1) SMR CODE	(2) FEDERAL STOCK NUMBER	(3) DESCRIPTION REFERENCE NUMBER & MFR. CODE USABLE ON CODE	(4) UNIT OF MEAS	(4) UNIT OF MEAS	(5) QTY INC IN UNIT	(6) 30 DAY DS MAINT ALLOWANCE			(7) 30-DAY GS MAINT ALLOWANCE			(8) 1-YR ALW PER 100 EQUIP CNTGCY	(9) DEPOT MAINT ALW PER 100 EQUIP	(10) ILLUSTRATION	
						(a)	(b)	(c)	(a)	(b)	(c)			(a)	(b)
						1-20	21-50	51-100	1-20	21-50	51-100			FIGURE NO.	ITEM NO/
		SLIDE AND BARREL GROUP													
P F	1005-019-7937	BUSHING, BARREL: 6223 (55358)	EA	1	*	*	*	*	*	*	*	*	••	32	1
P F	1005-019-7938	PLATE, BARREL BUSHING: 6224(55358)	EA	1	*	*	*	*	*	*	*	*	••	32	2
P F	1005-019-7923	SPRING, RECOIL: 6208(55358)	EA	1	*	*	*	*	*	*	*	*	••	32	3
P F	1005-019-7939	PLUNGER, BARREL BUSHING: 6225(55358)	EA	1	*	*	*	*	*	*	*	*	••	32	4
P F	1005-830-1623	SPRING, PLUNGER, BARREL BUSHING: 5045(55358)	EA	1	*	*	*	*	*	*	*	*	••	32	5
P F	1005-019-7924	GUIDE, RECOIL SPRING: 6209 (55358)	EA	1	*	*	*	*	*	*	*	*	••	32	6
P F	1005-019-7922	BARREL: 5-INCH: 6207(55358)	EA	2	*	*	*	*	*	*	*	*	••	32	7
P F	1005-019-7879	SAFETY, MANUAL: 6049 (55358)	EA	1	*	*	*	*	*	*	*	*	••	32	8
P F	1005-019-7874	PIN, FIRING: 6019(55358)	EA	1	*	*	*	*	*	*	*	*	••	32	9
P F	1005-019-7945	SPRING, FIRING PIN: 6231(55358)	EA	1	*	*	*	*	*	*	*	*	••	32	10
P F	1005-019-7880	PLUNGER, MANUAL SAFETY: 6051 (55358)	EA	1	*	*	*	*	*	*	*	*	••	32	11
P F	1005-019-7881	SPRING, PLUNGER. MANUAL SAFETY: 6052(55358)	EA	1	*	*	*	*	*	*	*	*	••	32	12
P F	1005-019-7933	EXTRACTOR: 6218(55358)	EA	1	*	*	*	*	*	*	*	*	••	32	13
P F	1005-019-7910	SIGHT ASSEMBLY, REAR: 6195(55358)	EA	1	*	*	*	*	*	*	*	*	••	32	14
P F	1005-019-7942	SCREW LOCK, REAR SIGHT: 6228(55358)	EA	1	*	*	*	*	*	*	*	*	••	32	15
P F	1005-019-7960	SCREW, ELEVATION, REAR SIGHT: 6201(55358)	EA	1	*	*	*	*	*	*	*	*	••	32	16
P F	1005-019-7927	WASHER, WAVY, REAR SIGHT: 6212(55358)	EA	1	*	*	*	*	*	*	*	*	••	32	17
P F	1005-712-9035	PLUNGER, ELEVATION, REAR SIGHT: 5104(55358) J	EA	1	REF	REF	REF	REF	REF	REF	REF	REF	••	32	18
P F	1005-712-8985	SPRING, PLUNGER, REARSIGHT 5103(55358) J	EA	2	REF	REF	REF	REF	REF	REF	REF	REF	••	32	19
P F	1005-019-7878	SPRING: MAGAZINE CATCH AND REAR SIGHT BASE 6042 (55358)	EA	2	*	*	*	*	*	*	*	*	••	32	20

Section IV. REPAIR PARTS LIST - Continued

(1) SMR CODE	(2) FEDERAL STOCK NUMBER	(3) DESCRIPTION REFERENCE NUMBER & MFR. CODE USABLE ON CODE	(4)	(4)	(5)	(6)			(7)			(8)	(9)	(10)	
			UNIT OF MEAS	UNIT OF MEAS	QTY INC IN UNIT	30 DAY DS MAINT ALLOWANCE			30-DAY GS MAINT ALLOWANCE			1-YR	DEPOT	(a)	(b)
						(a)	(b)	(c)	(a)	(b)	(c)	ALW PER 100 EQUIP CNTGCY	MAINT ALW PER 100 EQUIP		
P F	1005-019-7940	CLIP, SPRING, REAR SIGHT: 6226(55358)	EA	1	*	*	*	*	*	*	*	*	••	32	21
P F	1005-019-7914	PIN, PIVOT, REAR SIGHT: 6199(55358)	EA	1	*	*	*	*	*	*	*	*	••	32	22
P F	1005-019-7919	SCREW, WINDAGE, REAR SIGHT: 6204 (55358)	EA	1	*	*	*	*	*	*	*	*	••	32	23
P F	1005-019-7918	PLUNGER, WINDAGE, REAR SIGHT: 6203 (55358)	EA	1	*	*	*	*	*	*	*	*	••	32	24
P F	1005-019-7917	PIN, TRAVERSE, REAR SIGHT: 6202(55358)	EA	1	*	*	*	*	*	*	*	*	••	32	25
P F	1005-019-7920	NUT, WINDAGE, REAR SIGHT: 6205 (55358)	EA	1	*	*	*	*	*	*	*	*	••	32	26
P F	1005-019-7913	SLIDE, REAR SIGHT: 6198(53358)	EA	1	*	*	*	*	*	*	*	*	••	32	27
P F	1005-019-7921	SPRING, WINDAGE, REAR SIGHT: 6206(55358)	EA	1	*	*	*	*	*	*	*	*	••	32	28
P F	1005-019-7912	BODY, REAR SIGHT: 6197(55358)	EA	1	*	*	*	*	*	*	*	*	••	32	29
.P F	1005-019-7911	BASE, REAR SIGHT: 6196 (55358)	EA	1	*	*	*	*	*	*	*	*	••	32	30
P F	1005-019-7915	NUT, ELEVATION, REAR SIGHT: 6200(55358)	EA	1	*	*	*	*	*	*	*	*	••	32	31
P F	1005-019-7944	SPRING, PLUNGER, EJECTOR DEPRESSOR: 6230(55358)	EA	1	*	*	*	*	*	*	*	*	••	32	32
P F	1005-019-7872	PLUNGER, EJECTOR DEPRESSOR: 6013(55358)	EA	1	*	*	*	*	*	*	*	*	••	32	33
P F	1005-019-7925	SLIDE: WITH FRONT SIGHT: 6210(55358)	EA	1	*	*	*	*	*	*	*	*	••	32	34
P F	1005-019-7936	RECEIVER ASSEMBLY SCREW, GRIP: 6221(55358)	EA	2	*	*	*	*	*	*	*	*	••	33	1
C P F	1005-869-7974	GRIP, PISTOL: RIGHT AND LEFT HAND, WALNUT: 5910304 (19204)	EA	1	*	*	*	*	*	*	*	*	••	33	2
P F	1005-019-7875	PIN, INSERT AND TRIGGER: 6031 (55358)	EA	2	*	*	*	*	*	*	*	*	••	33	3
P F	1005-019-7926	INSERT: 6211(55358)	EA	1	*	*	*	*	*	*	*	*	••	33	4
P F	0005-019-7943	MAINSRING: 6229(55358)	EA	1	*	*	*	*	*	*	*	*	••	33	5
P F	1005-019-7932	PLUNGER, MAINSPRING: 6217(55358)	EA	1	*	*	*	*	*	*	*	*	••	33	6

Section IV. REPAIR PARTS LIST - Continued

(1) SMR CODE	(2) FEDERAL STOCK NUMBER	(3) DESCRIPTION REFERENCE NUMBER & MFR. CODE USABLE ON CODE	(4) UNIT OF MEAS	(4) UNIT OF MEAS	(5) QTY INC IN UNIT	(6) 30 DAY DS MAINT ALLOWANCE			(7) 30-DAY GS MAINT ALLOWANCE			(8) 1-YR ALW PER 100 EQUIP CNTGCY	(9) DEPOT MAINT ALW PER 100 EQUIP	(10) ILLUSTRATION	
						(a)	(b)	(c)	(a)	(b)	(c)			(a)	(b)
						1-20	21-50	51-100	1-20	21-50	51-100			FIGURE NO.	ITEM NO/
P F	1005-019-7890	PLATE, SIDE: 6117(55358)	EA	1	*	*	*	*	*	*	*	••	33	7	
P F	1005-019-7899	DEPRESSOR, EJECTOR AND MAGAZINE: 6182 (55358)	EA	1	*	*	*	*	*	*	*	••	33	8	
P F	1005-019-7873	SPRING, EJECTOR: 6017(55358)	EA	1	*	*	*	*	*	*	*	••	33	9	
P F	1005-019-7935	HAMMER: 6220 (55358)	EA	1	*	*	*	*	*	*	*	••	33	10	
P F	1005-019-7897	PIN, STIRRUP: 6152(55358)	EA	1	*	*	*	*	*	*	*	••	33	11	
P F	1005-019-7896	STIRRUP: 6151(55358)	EA	1	*	*	*	*	*	*	*	••	33	12	
P F	1005-019-7882	PIN, SEAR: 6066 (55358)	EA	1	*	*	*	*	*	*	*	••	33	13	
P F	1005-019-7928	SEAR: 6213(55358)	EA	1	*	*	*	*	*	*	*	••	33	14	
P F	1005-019-7888	PIN: SEAR AND SLIDE STOP PLUNGER: 6115(55358)	EA	2	*	*	*	*	*	*	*	••	33	15	
P F	1005-019-7870	PLUNGER, SEAR: 6114(55358)	EA	1	*	*	*	*	*	*	*	••	33	16	
P F	1005-019-7889	SPRING, SEAR PLUNGER: 6116 (55358)	EA	1	*	*	*	*	*	*	*	••	33	17	
P F	1005-019-7898	DRAWBAR: 6181(55358)	EA	1	*	*	*	*	*	*	*	••	33	18	
P F	1005-019-7887	PLUNGER, DRAWBAR: 6110(55358)	EA	1	*	*	*	*	*	*	*	••	33	19	
P F	1005-019-7946	SPRING, DRAWBAR PLUNGER: 6232(55358)	EA	1	*	*	*	*	*	*	*	••	33	20	
P F	1005-019-7895	SPRING, TRIGGER PLAY: 6142(55358)	EA	1	*	*	*	*	*	*	*	••	33	21	
P F	1005-119-7930	SCREW, LOCKOUT, DOUBLE ACTION: 6215(55358)	EA	1	*	*	*	*	*	*	*	••	33	22	
P F	1005-019-7929	TRIGGER: 6214(55358)	EA	1	*	*	*	*	*	*	*	••	33	23	
P F	1005-019-7871	PIN, TRIGGER PLUNGER: 6011(55358)	EA	1	*	*	*	*	*	*	*	••	33	24	
P F	1005-019-7891	PLUNGER., TRIGGER: 6121(55358)	EA	1	*	*	*	*	*	*	*	••	33	25	
P F	1005-019-7892	SPRING, TRIGGER PLUNGER: 6122(55358)	EA	1	*	*	*	*	*	*	*	••	33	26	
P F	1005-019-7885	DISCONNECTOR: 6107(55358)	EA	1	*	*	*	*	*	*	*	••	33	27	

Section IV. REPAIR PARTS LIST - Continued

(1) SMR CODE	(2) FEDERAL STOCK NUMBER	(3) DESCRIPTION REFERENCE NUMBER & MFR. CODE USABLE ON CODE	(4) UNIT OF MEAS	(4) UNIT OF MEAS	(5) QTY INC IN UNIT	(6) 30 DAY DS MAINT ALLOWANCE			(7) 30-DAY GS MAINT ALLOWANCE			(8) 1-YR ALW PER 100 EQUIP CNTGCY	(9) DEPOT MAINT ALW PER 100 EQUIP	(10) ILLUSTRATION	
						(a)	(b)	(c)	(a)	(b)	(c)			(a)	(b)
						1-20	21-50	51-100	1-20	21-50	51-100			FIGURE NO.	ITEM NO/
P F	1005-019-7886	PIN, DISCONNECTOR: 6108(55358)	EA	1	*	*	*	*	*	*	*	••	33	28	
P F	1005-019-7877	NUT, MAGAZINE CATCH: 6040 (55358)	EA	1	*	*	*	*	*	*	*	••	33	29	
P F	1005-831-1268	PLUNGER, MAGAZINE CATCH: 6041 (55358)	EA	1	REF	REF	REF	REF	REF	REF	REF	••	33	30	
P F	1005-019-7878	SPRING: MAGAZINE CATCH AND REAR SIGHT BASE: 6042 (55358)	EA	1	REF	REF	REF	REF	REF	REF	REF	••	33	31	
P F	1005-019-7903	CATCH, MAGAZINE: 6186 (55358)	EA	1	*	*	*	*	*	*	*	••	33	32	
P F	1005-019-7934	STUD, FRAME: 6219(55358)	EA	1	*	*	*	*	*	*	*	••	33	33	
P F	1005-019-7883	BUTTON, SLIDE TOP- 6081(55358)	EA	1	*	*	*	*	*	*	*	••	33	34	
X	RECEIVER:	EA	1	••	••	••	••	••	••	••	••	33	35	
P F	1005-019-7908	STOP, SLIDE: 6193(55358)	EA	1	*	*	*	*	*	*	*	••	33	36	
P F	1005-019-7884	PLUNGER, SLIDE STOP: 6083(55358)	EA	1	*	*	*	*	*	*	*	••	33	37	
P F	1005-019-7909	SPRING, PLUNGER, SLIDE STOP- 6194 (55358)	EA	1	*	*	*	*	*	*	*	••	33	38	
P F	1005-019-7931	SCREW, TRIGGER STOP: 6216(55358)	EA	1	*	*	*	*	*	*	*	••	33	39	

Section V. SPECIAL TOOLS LIST

(1) SMR CODE	(2) FEDERAL STOCK NUMBER	(3) DESCRIPTION REFERENCE NUMBER & MFR. CODE USABLE ON CODE	(4) UNIT OF MEAS	(4) UNIT OF MEAS	(5) QTY INC IN UNIT	(6) 30 DAY DS MAINT ALLOWANCE			(7) 30-DAY GS MAINT ALLOWANCE			(8) 1-YR ALW PER 100 EQUIP CNTGCY	(9) DEPOT MAINT ALW PER 100 EQUIP	(10) ILLUSTRATION		
						(a)	(b)	(c)	(a)	(b)	(c)			(a)	(b)	
						1-20	21-50	51-100	1-20	21-50	51-100			FIGURE NO.	ITEM NO/	
		TOOLS AND EQUIPMENT TOOLS AND EQUIPMENT ARE AUTHORIZED FOR CALIBER .32 PISTOL ONLY														
P O	1005-716-2132	BRUSH, CLEANING, SMALL ARMS: BORE 7162132 (19205)	EA	••	*	*	*	*	*	*	*	*	••	8	1	
P O	1005-556-4102	ROD, CLEANING, SMALL ARMS: M4 5564102 (19204)	EA	••	*	*	*	*	*	*	*	*	••	8	2	

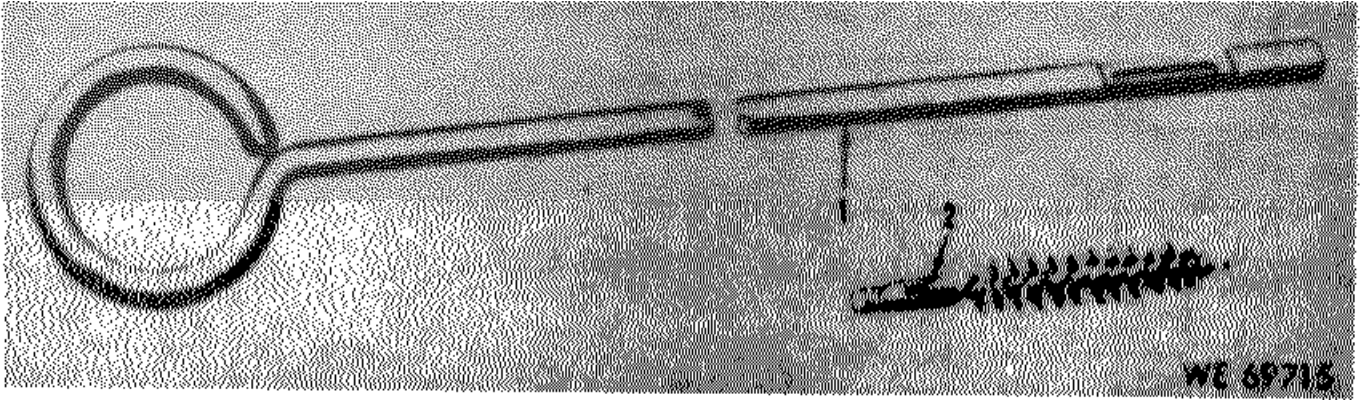
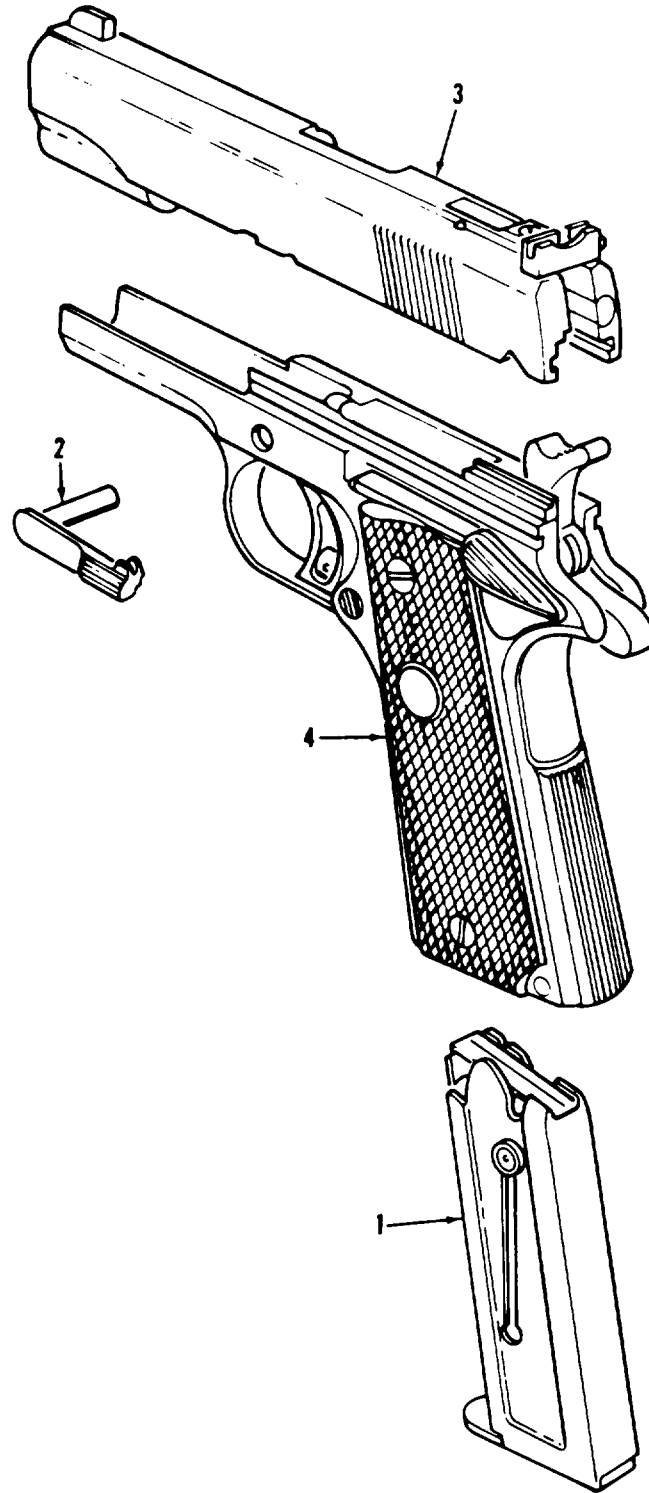
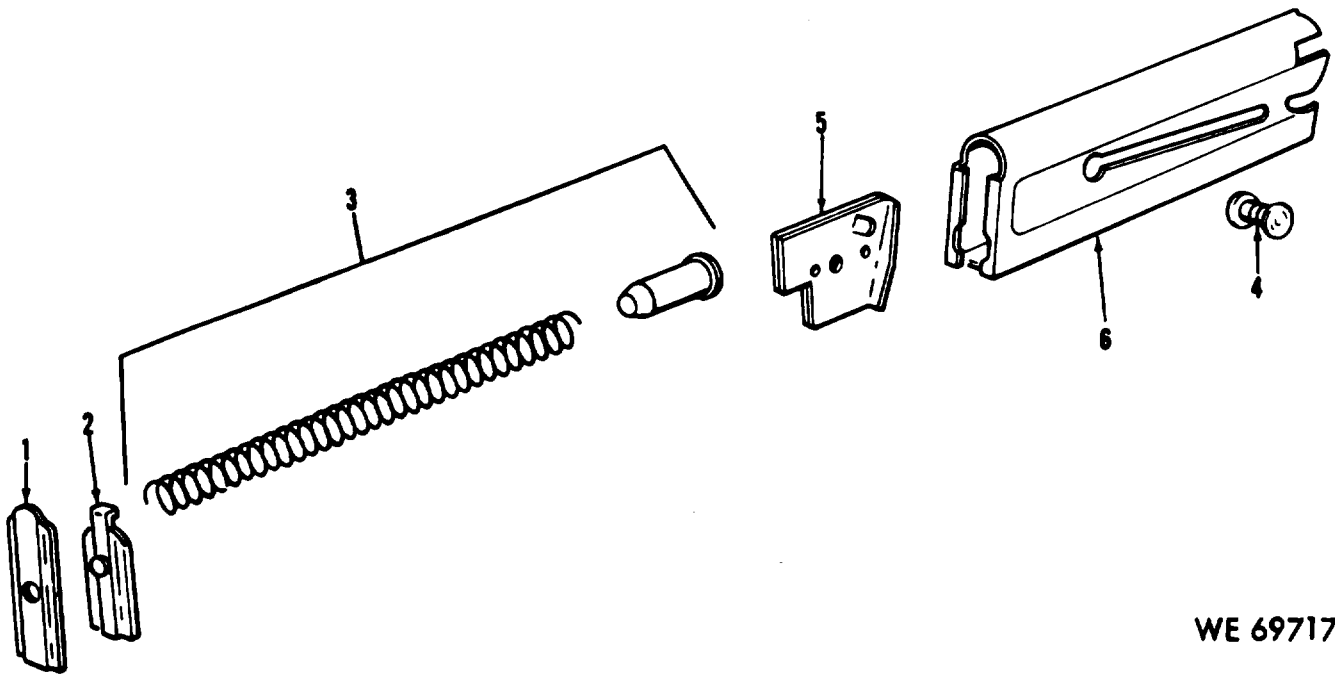


Figure 8. Tools and equipment for Colt Cal. 32 automatic pistol.



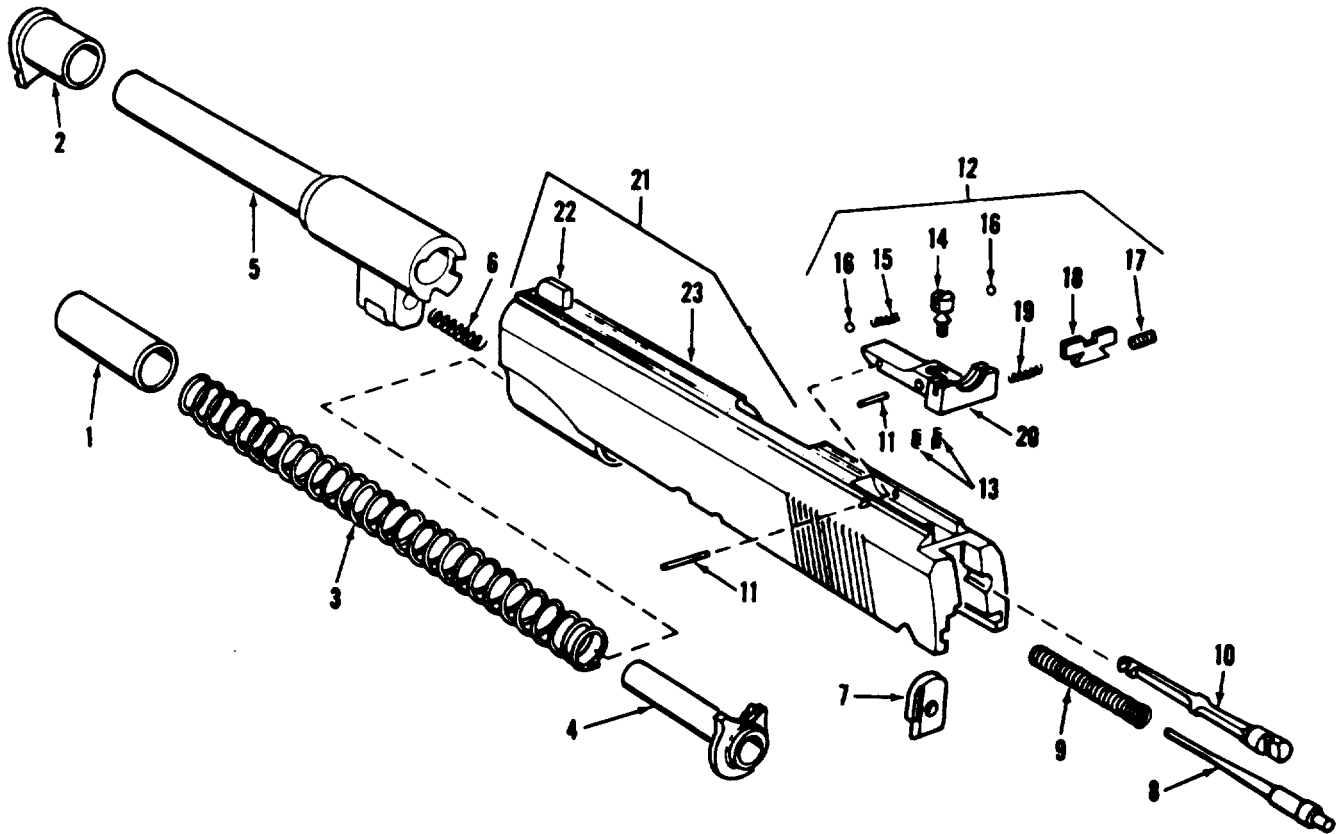
WE 69716

Figure 9. Major groups and assemblies-- Gold Cup National Match Colt cal .38 automatic pistol.



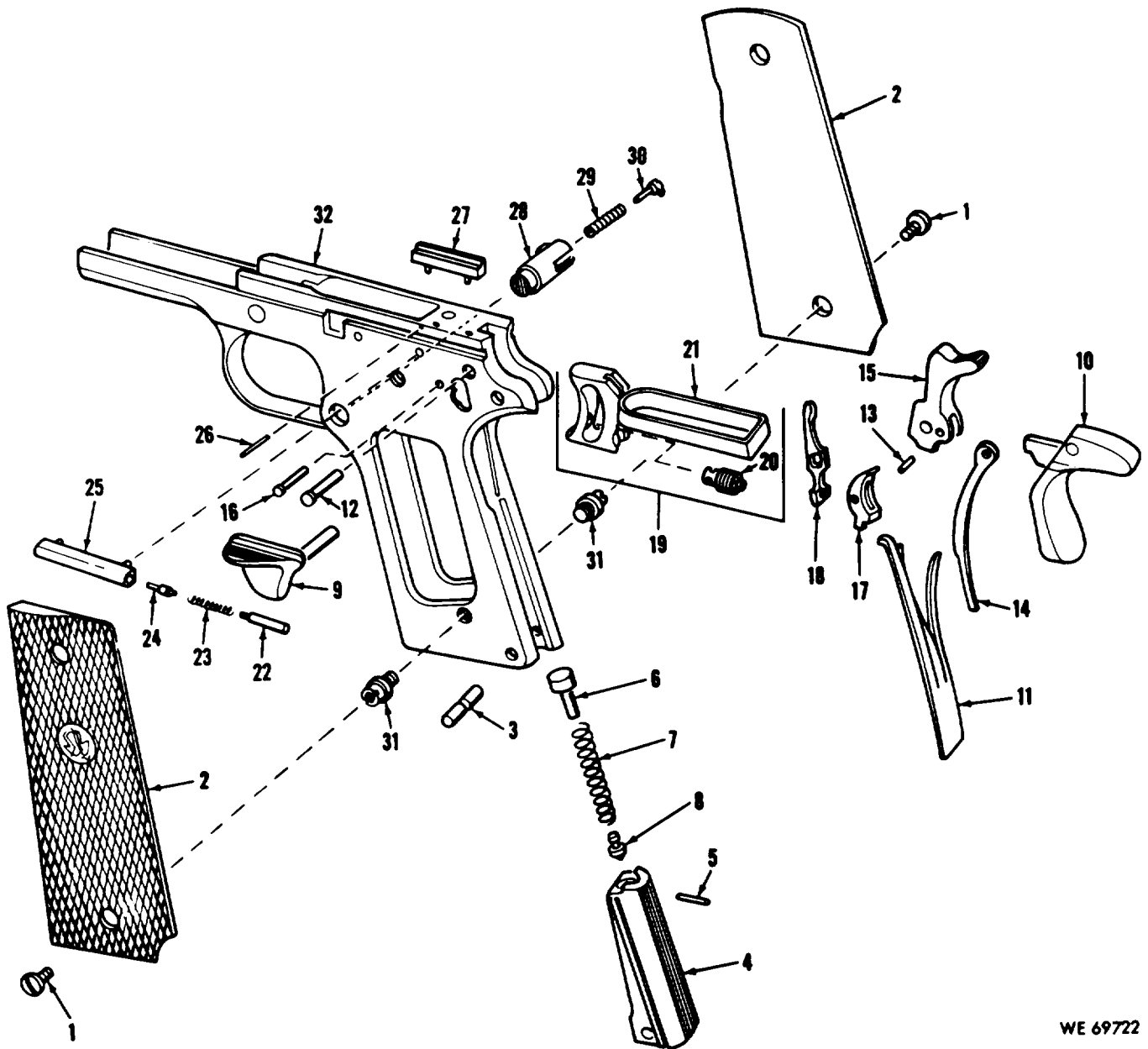
WE 69717

Figure 10. Magazine assembly for Gold Cup National Match Colt cal. .38 automatic pistol-exploded view



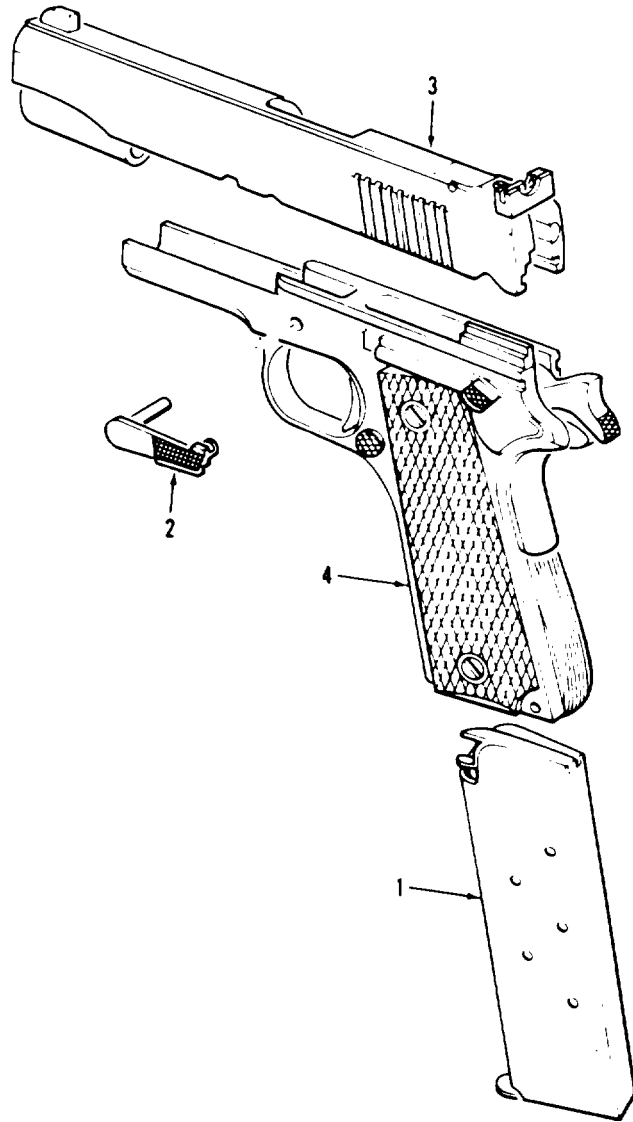
WE 69718

Figure 11. Slide group for Gold Cup National Match Colt cal. .38 automatic pistol-exploded view.



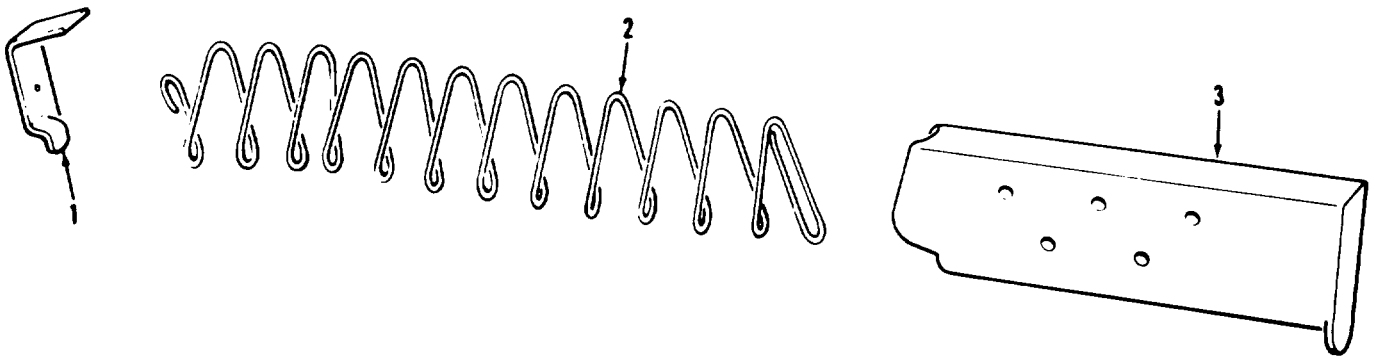
WE 69722

Figure 12. Receiver group for Gold Cup National Match Colt cal. .38 and cal. .45 automatic pistol-exploded view.



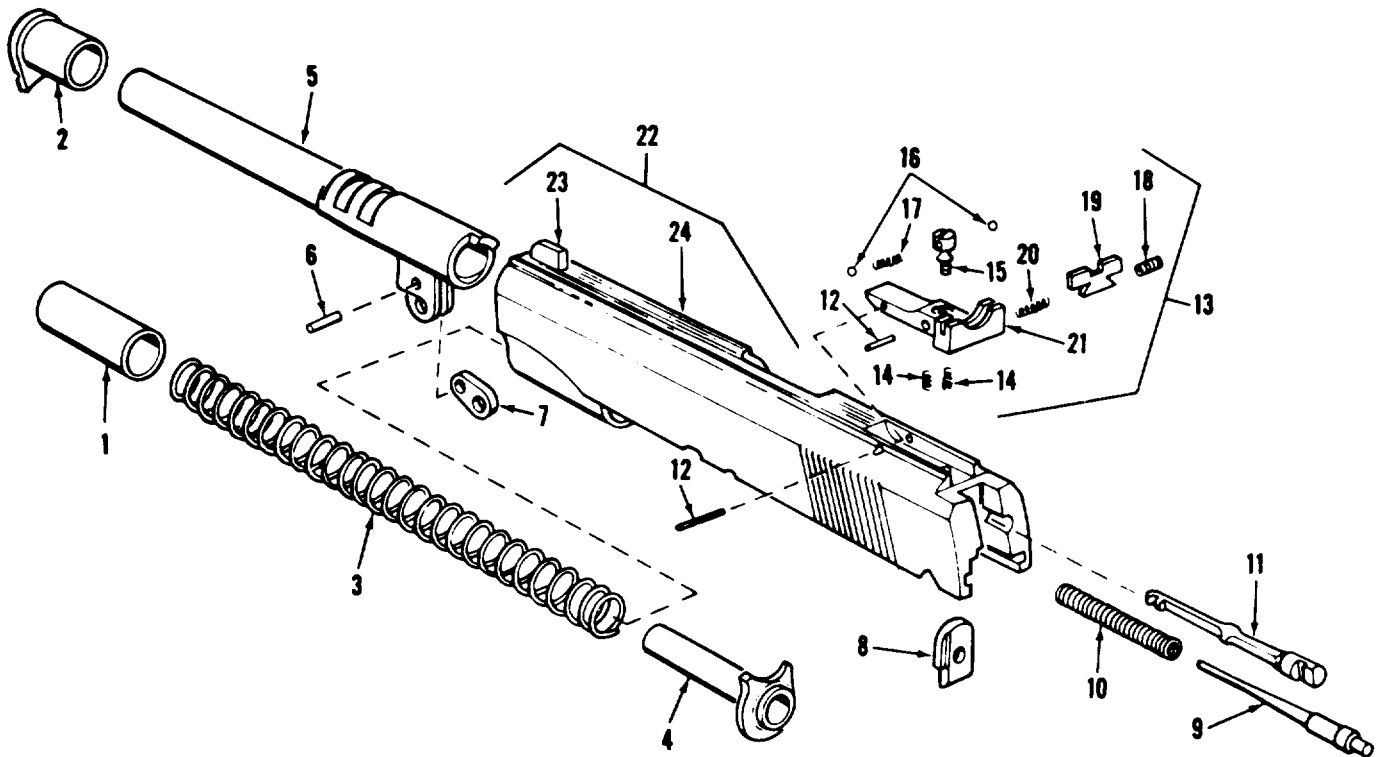
WE 69719

Figure 13. Major groups and assemblies-Gold Cup National Match Colt cal. .45 automatic pistol- exploded view.



WE 69720

Figure 14. Magazine assembly for Gold Cup National Match Colt cal, 45 automatic pistol-exploded view.



WE 69721

Figure 15. Slide group for Gold Cup National Match Colt cal. .45 automatic pistol-exploded view.

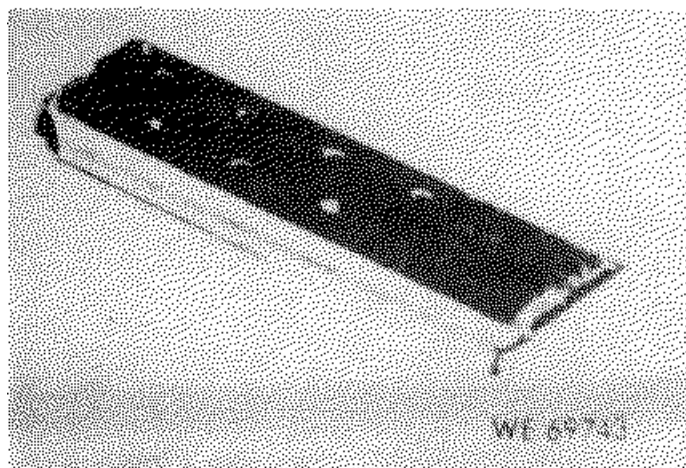
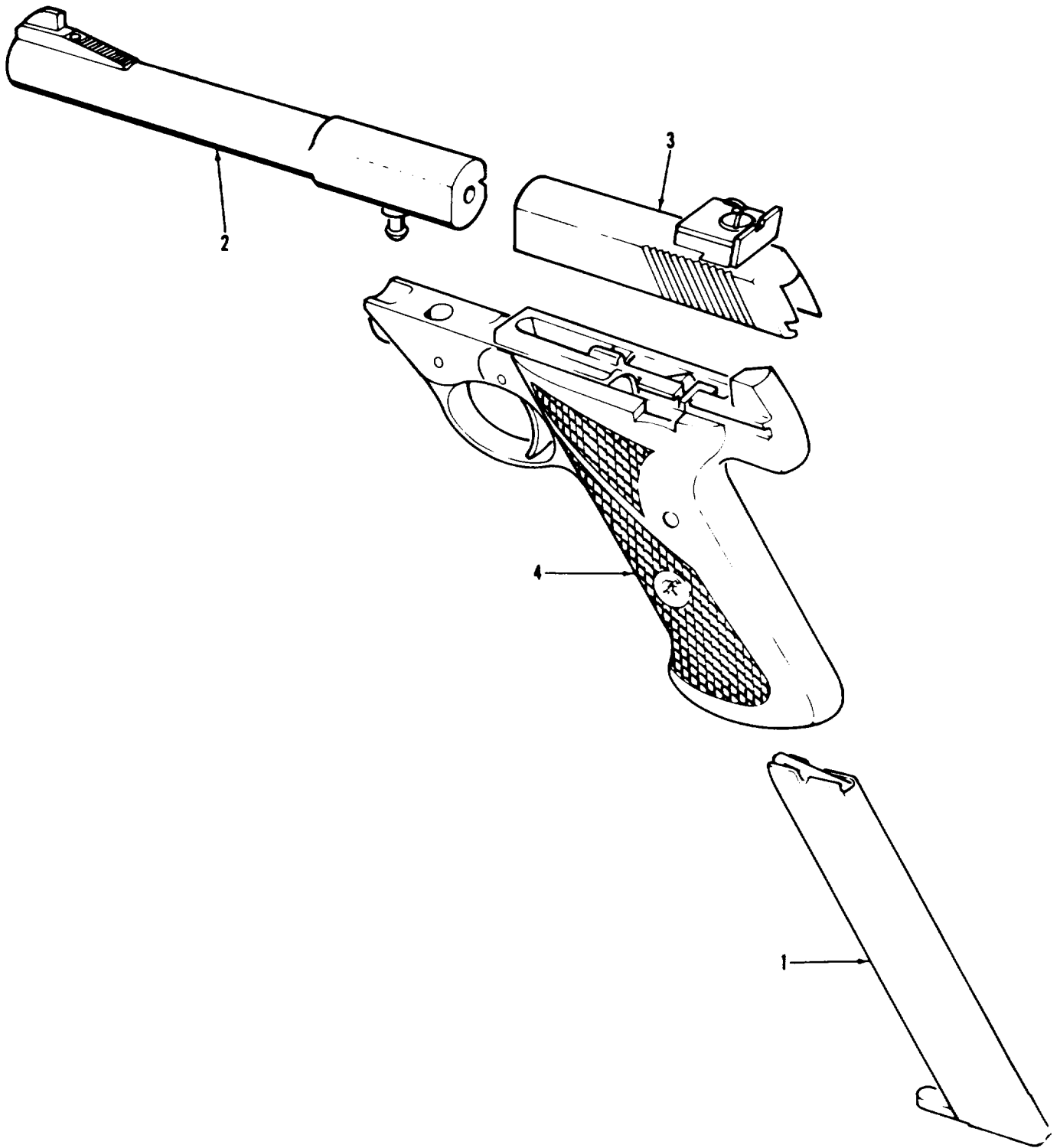


Figure 16. Magazine assembly-Model M Colt cal. 32 automatic pistol



WE 69723

Figure 17. Major groups and assemblies-Hi-Standard Supermatic Tournament cal. .22 automatic pistol-exploded view.

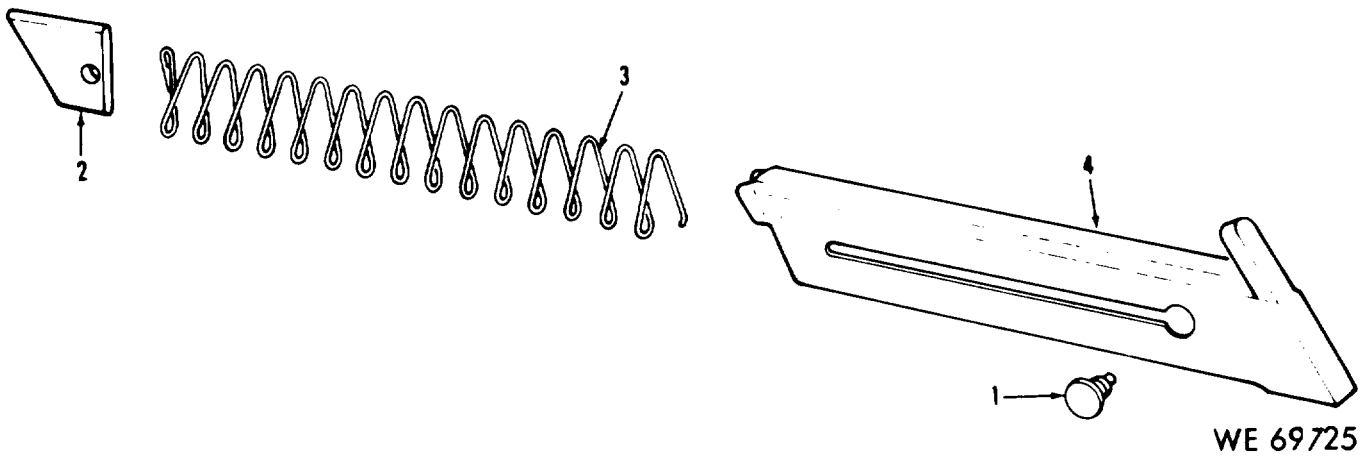


Figure 18. Magazine assembly for Hi-Standard Supermatic Tournament cal. .22 automatic pistol-exploded view.

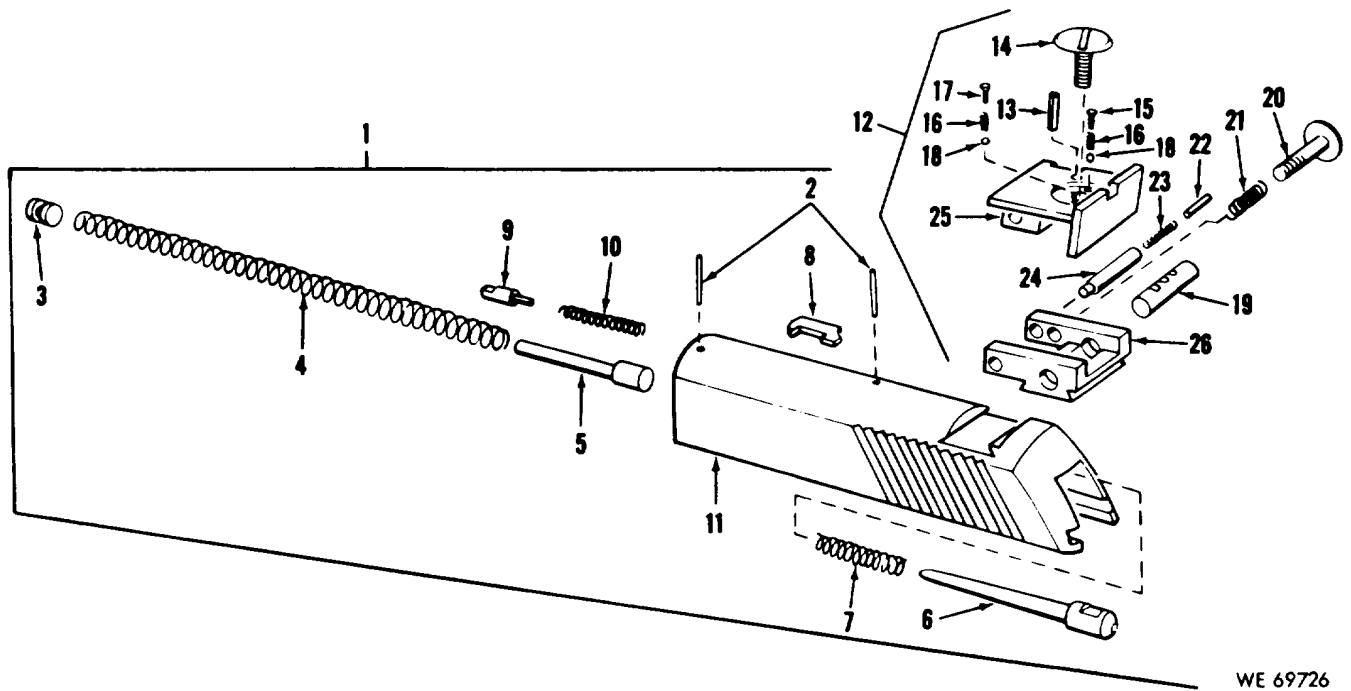


Figure 19. Slide group for Hi-Standard Supermatic Tournament cal. .22 automatic pistol-exploded view.

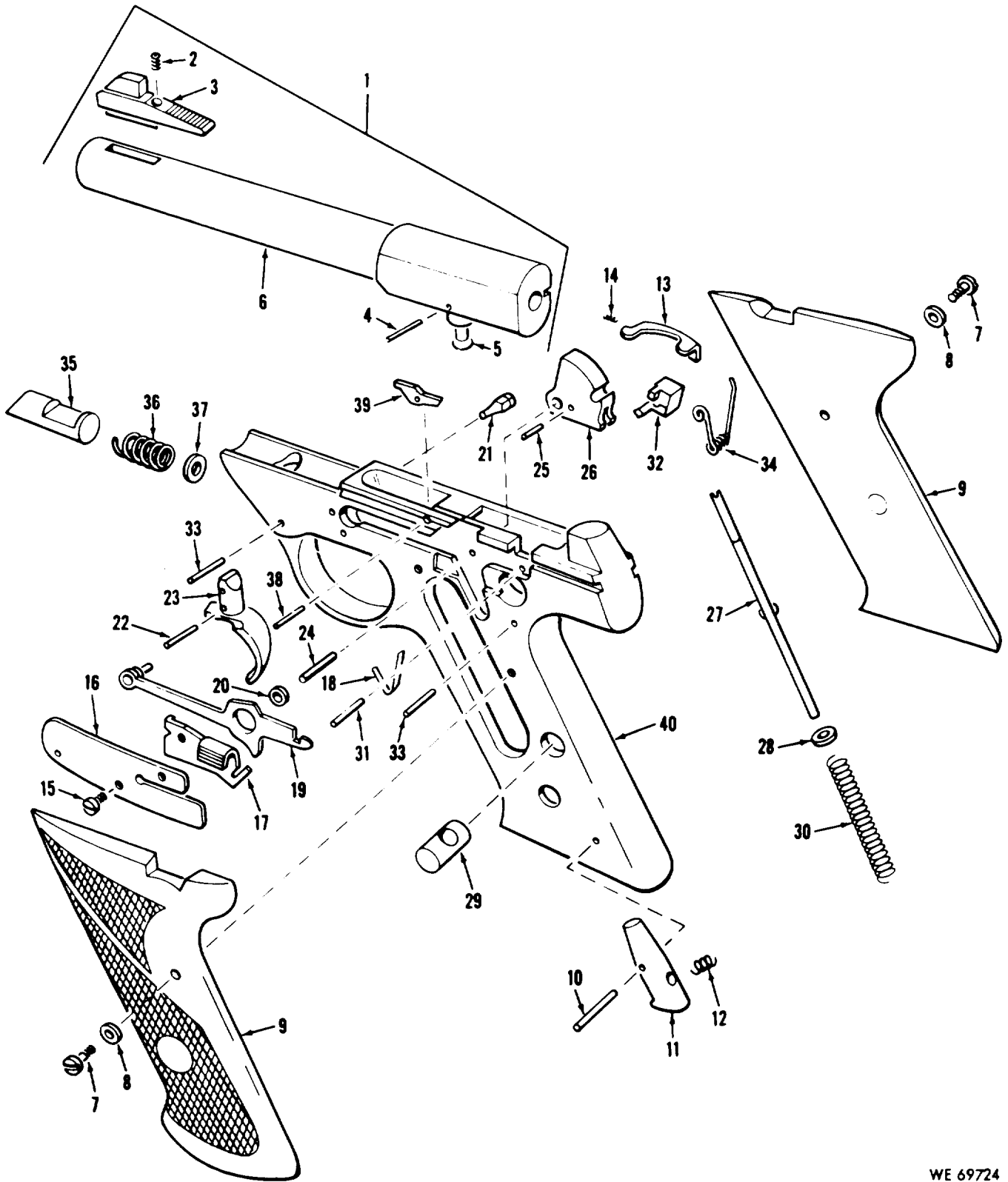


Figure 20. Barrel and receiver group Hi-Standard Supermatic Tournament cal. .22 automatic pistol-exploded view

WE 69724

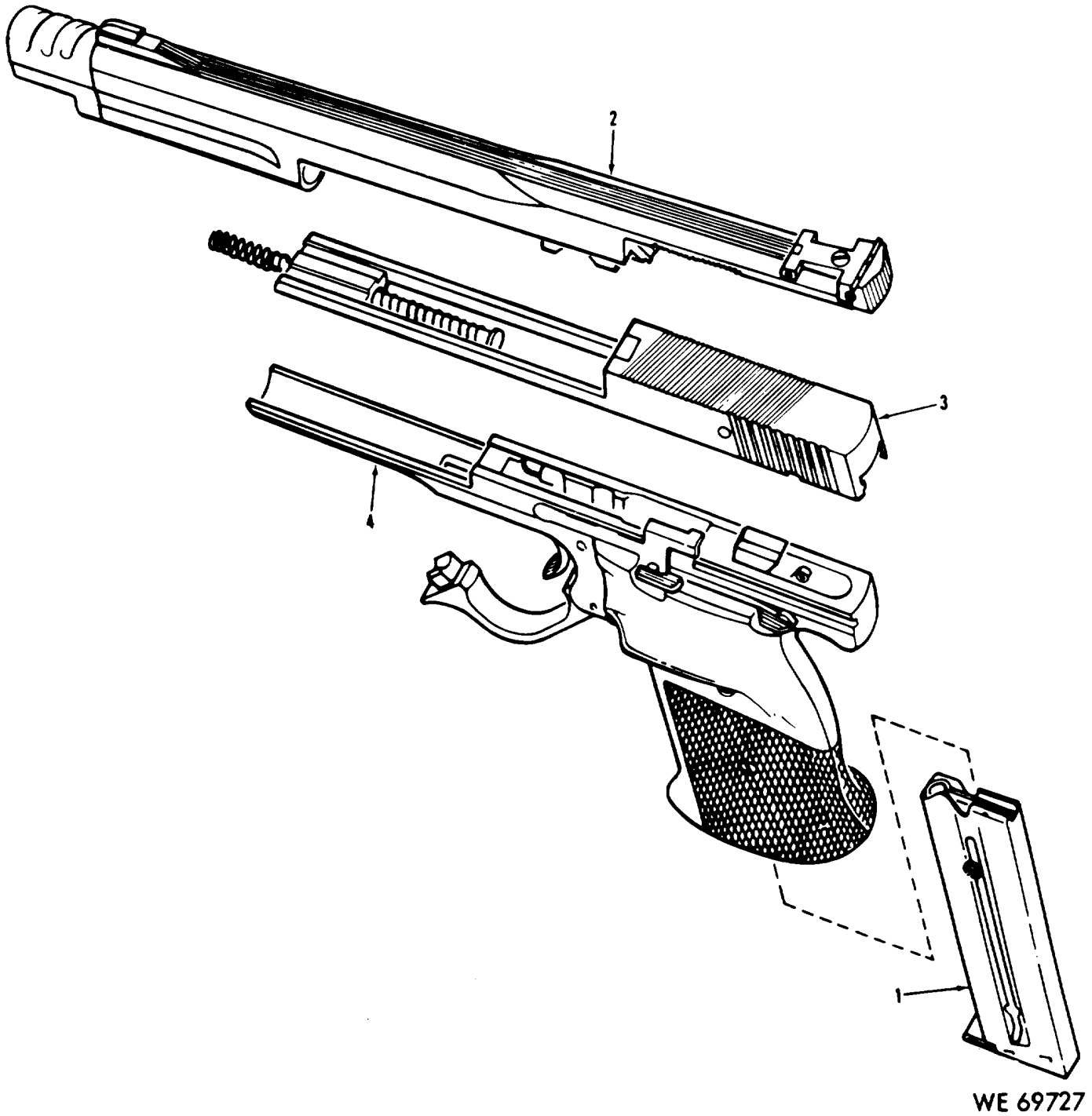
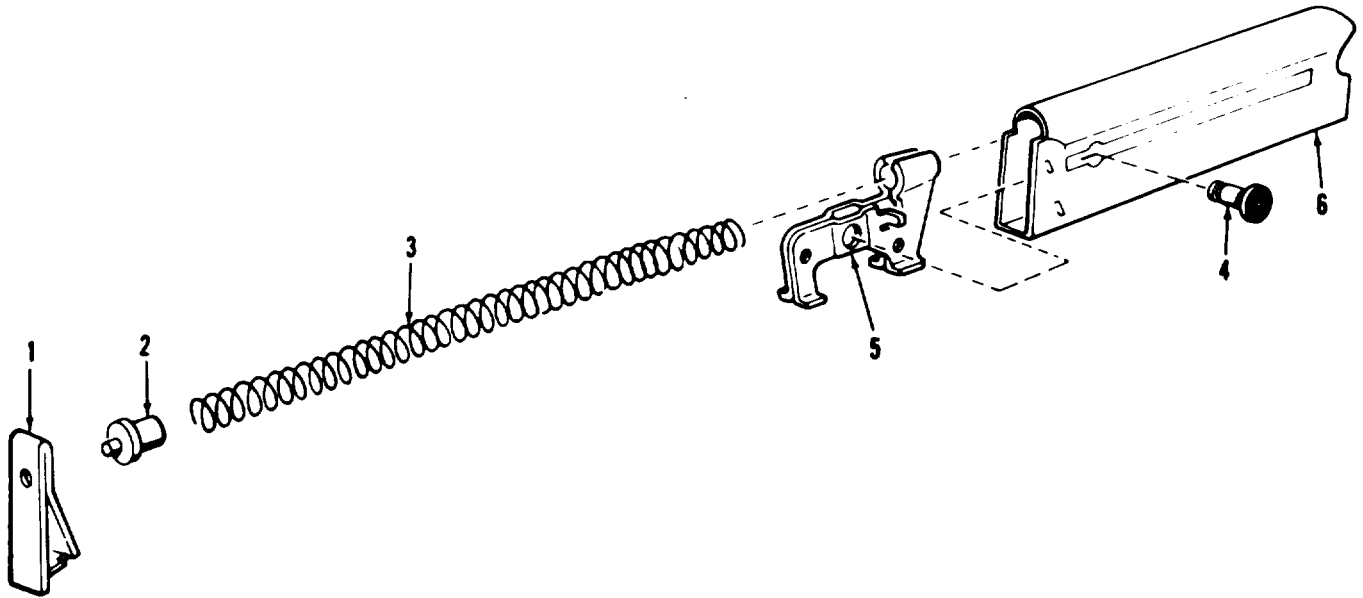


Figure 21. Major groups and assemblies-Model 41 Smith and Wesson cal. .22 automatic pistol-exploded view.

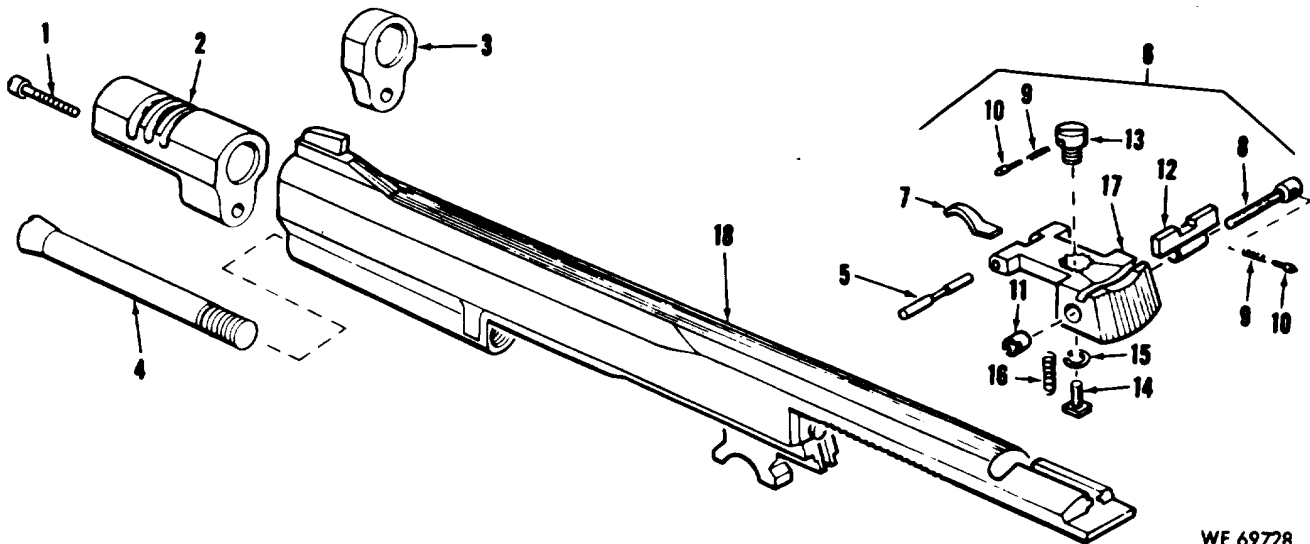


WE 69735

Figure 22. Magazine assembly for Models 41 and 46 Smith and Wesson cal 22 automatic pistol--exploded view.

This material is reprinted from THE AMERICAN RIFLEMAN, official journal of the National Rifle Association of America, 1600 Rhode Island Avenue, N.W., Washington 6. D.C.

THE AMERICAN RIFLEMAN is a fully copyrighted publication. This material may not be reproduced without the express permission of the NRA.



WE 69728

Figure 23. Barrel group for Model 41 Smith and Wesson ca. .22 automatic pistol--exploded view.

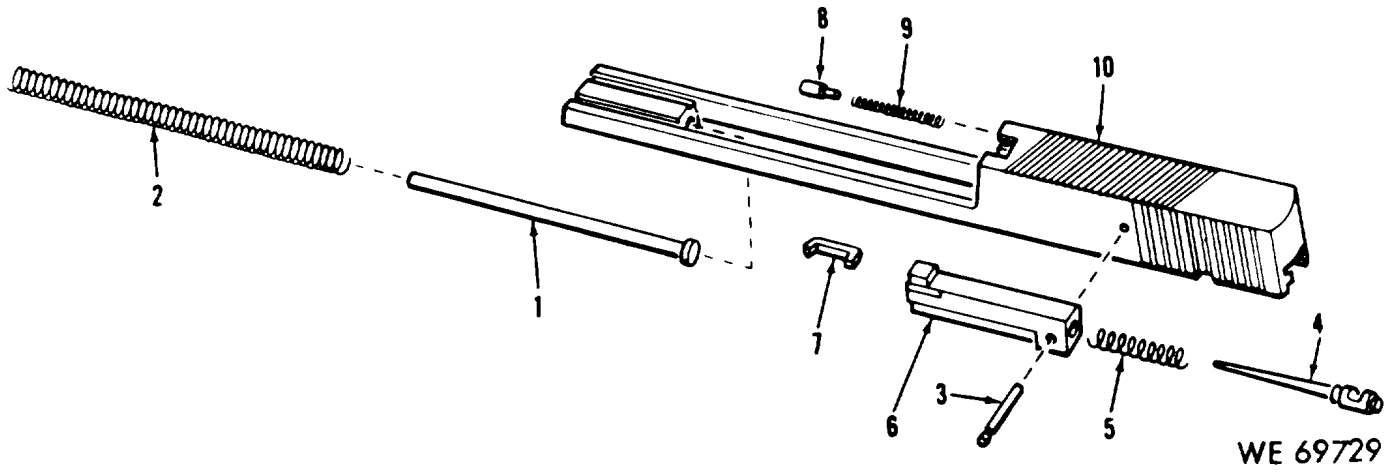


Figure 24. Slide assembly for Model 41 Smith and Wesson cal. .22 automatic pistol-exploded view

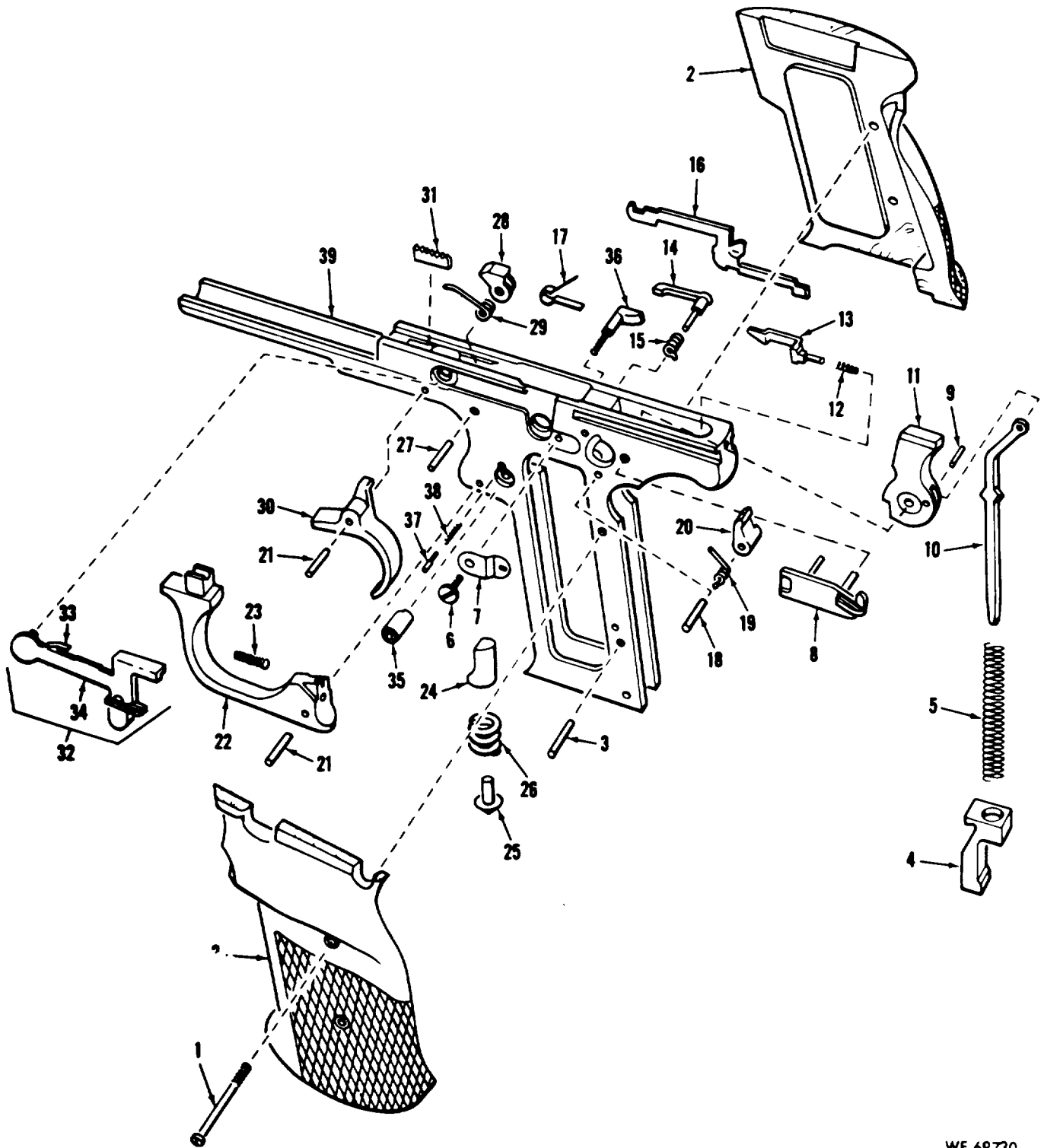


Figure 25. Receiver group for Model 41 Smith and Wesson cal. .22 automatic pistol-exploded view.

WE 69730

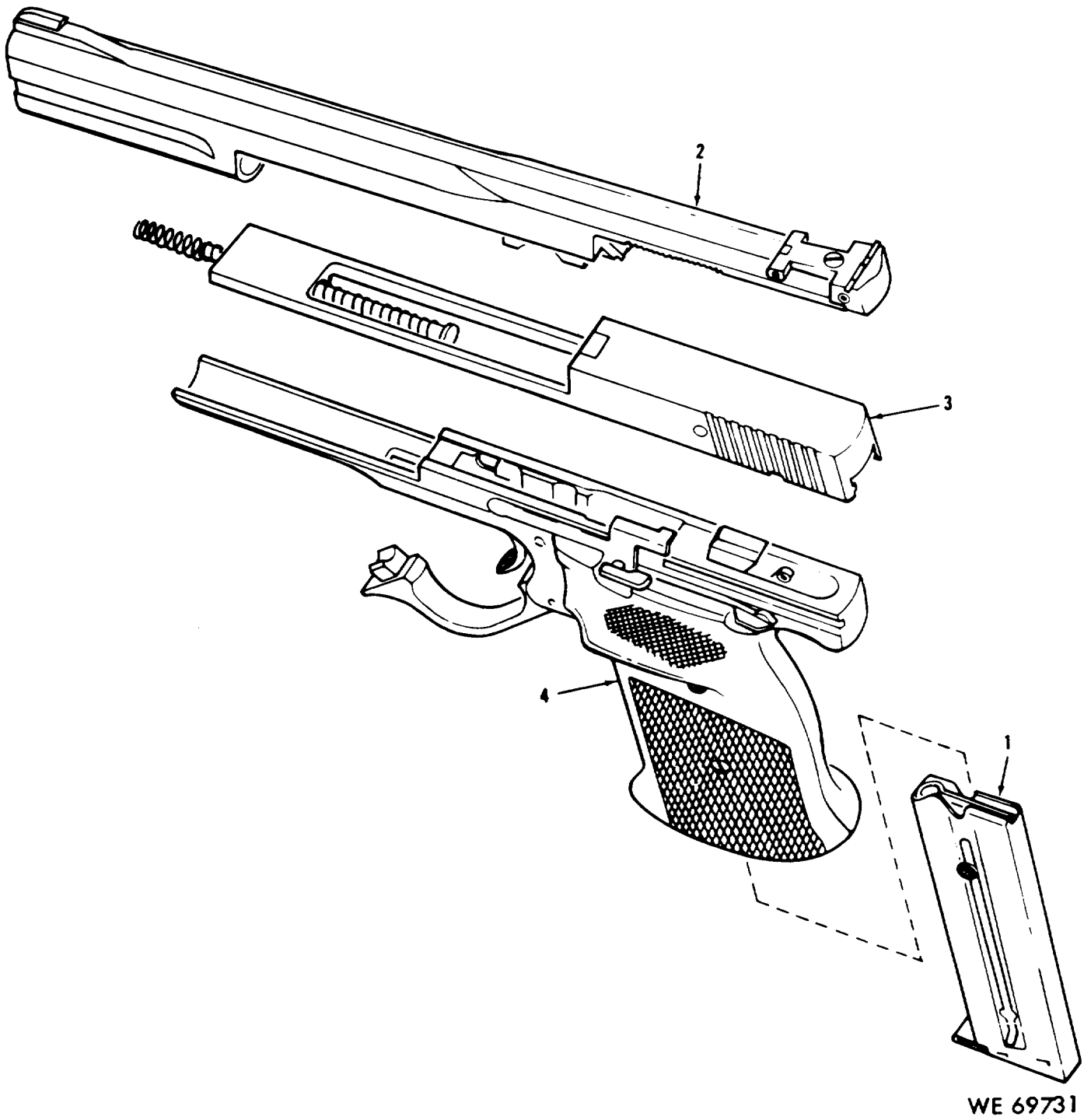


Figure 26. Major groups and assemblies-Model 46 Smith and Wesson cal. .22 automatic pistol-exploded view.

This material is reprinted from THE AMERICAN RIFLEMAN, official journal of the National Rifle Association of America, 1600 Rhode Island Avenue, N.W., Washington 6, D.C.

THE AMERICAN RIFLEMAN is a fully copyrighted publication. This material may not be reproduced without the express permission of the NRA.

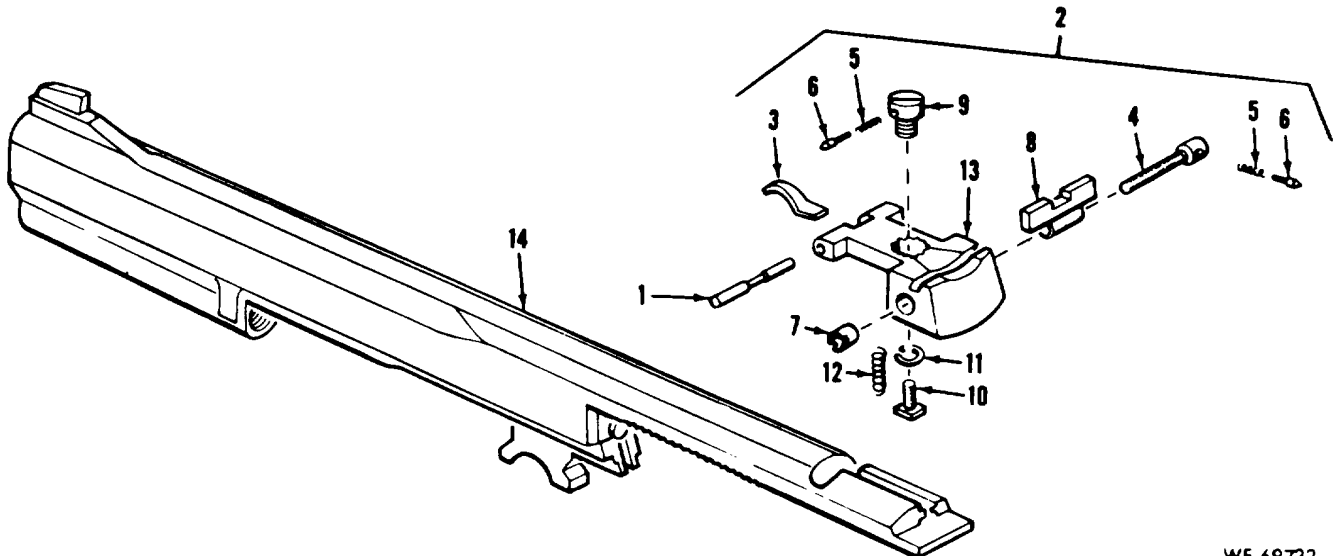


Figure 27. Barrel group for Model 46 Smith and Wesson cal. .22 automatic pistol-exploded view.

WE 69732

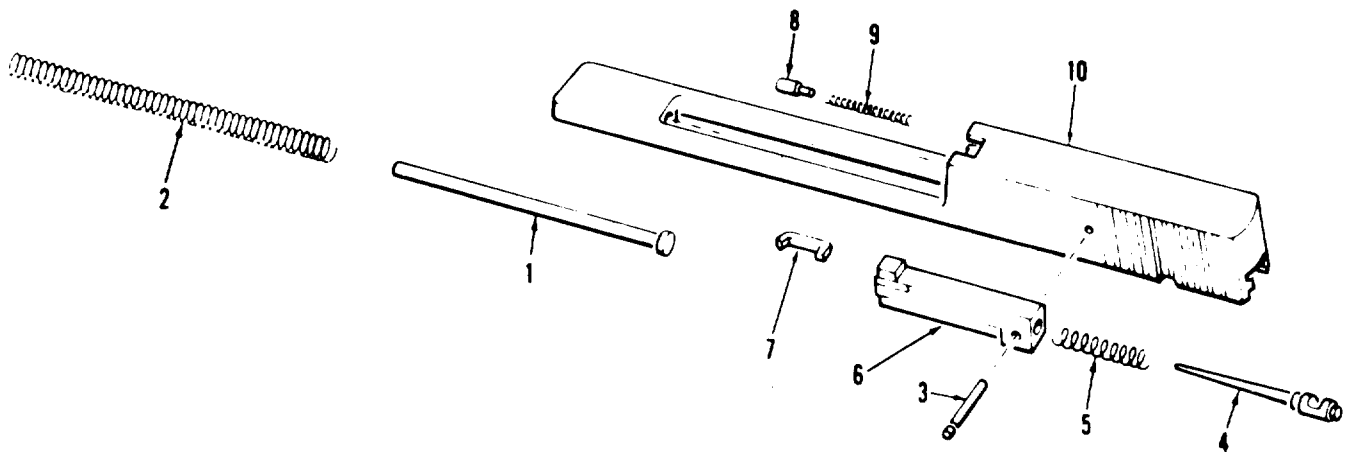


Figure 28. Slide assembly for Model 46 Smith and Wesson cal. .22 automatic pistol-exploded view

WE 69733

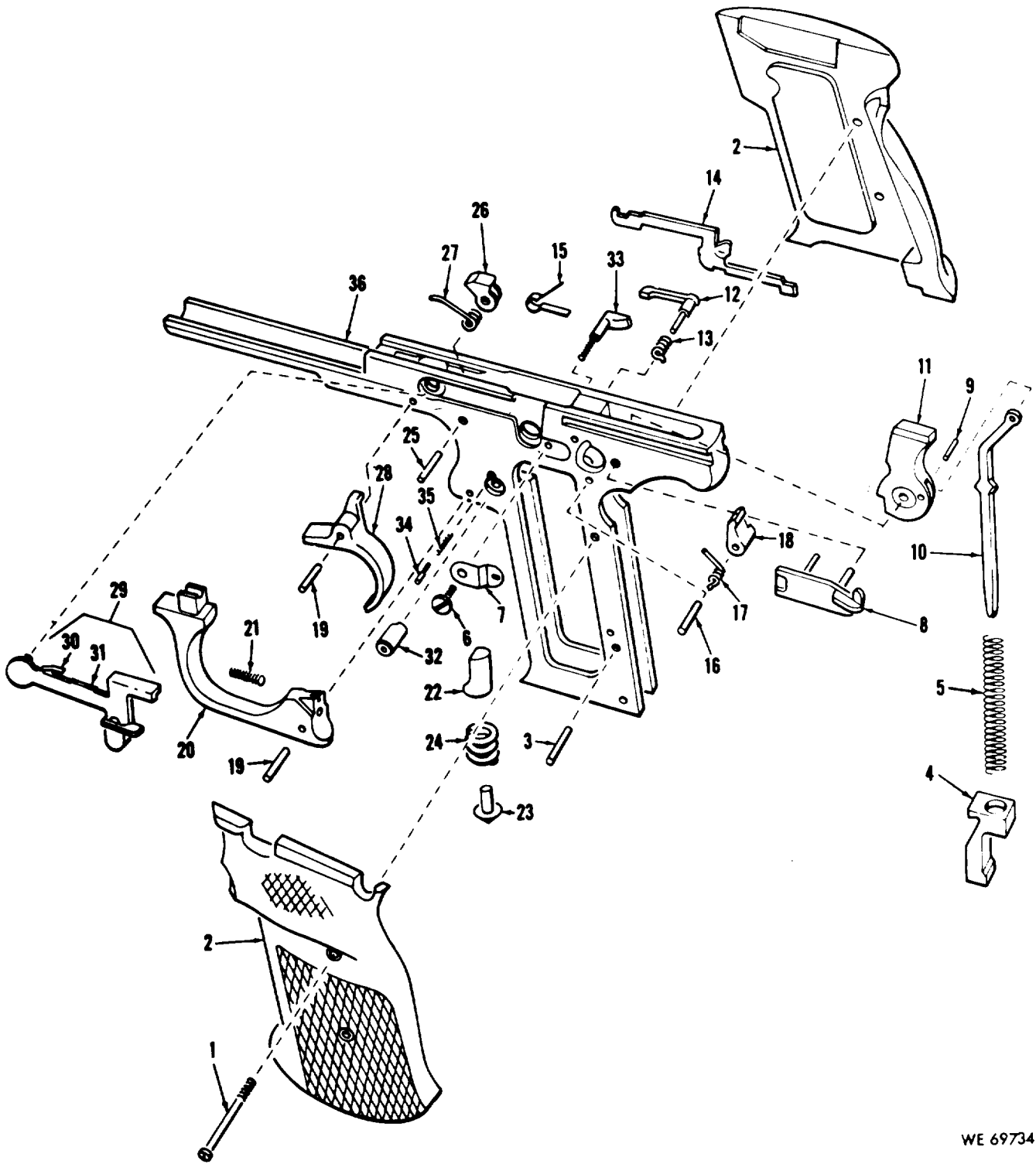


Figure 29. Receiver group for Model 46 Smith and Wesson cal. .22 automatic pistol-exploded view.

WE 69734

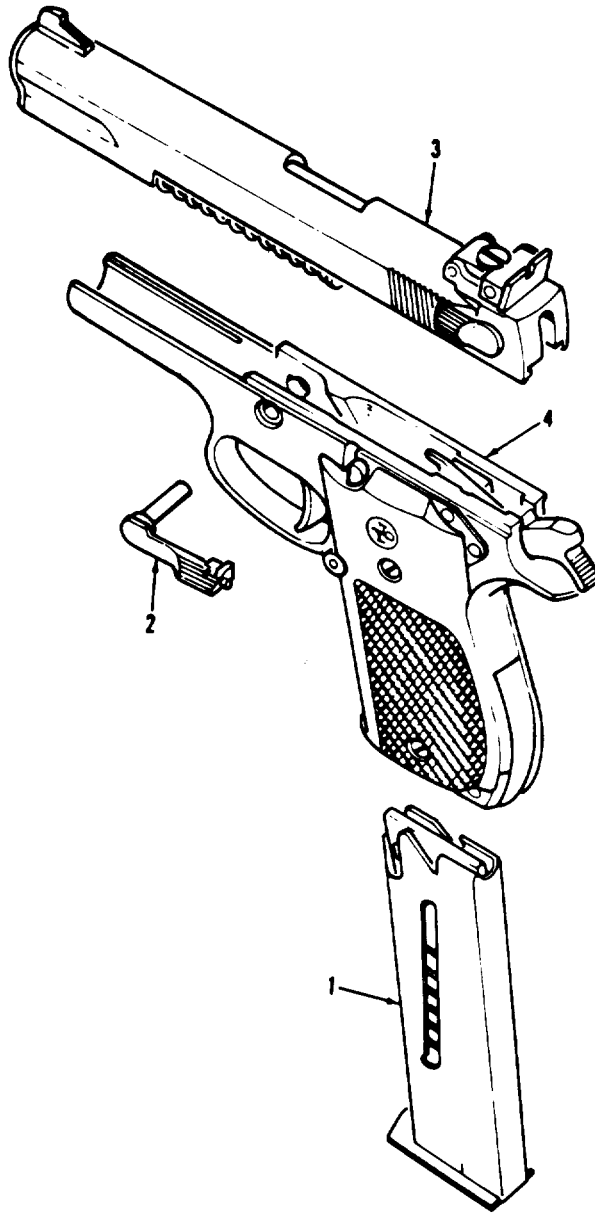


Figure 30. Major groups and assemblies-Model 52 Smith and Wesson cal. .38 automatic pistol-exploded view.

WE 69742

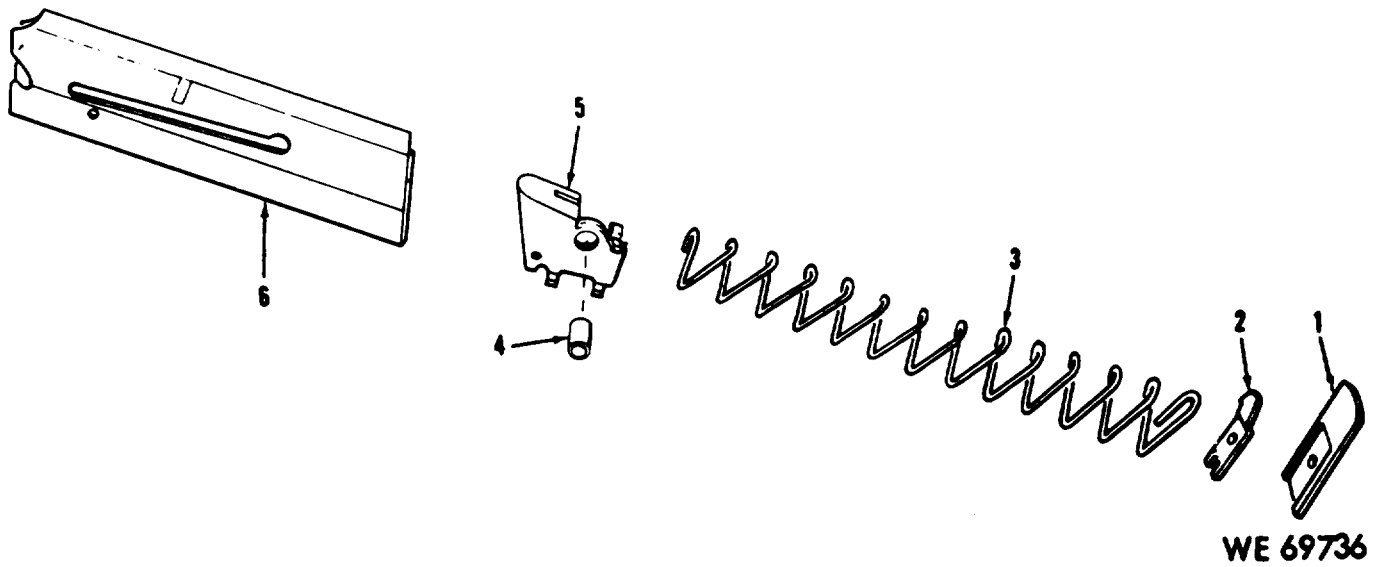


Figure 31. Magazine assembly for Model 52 Smith and Wesson cal. .38 automatic pistol-exploded view.

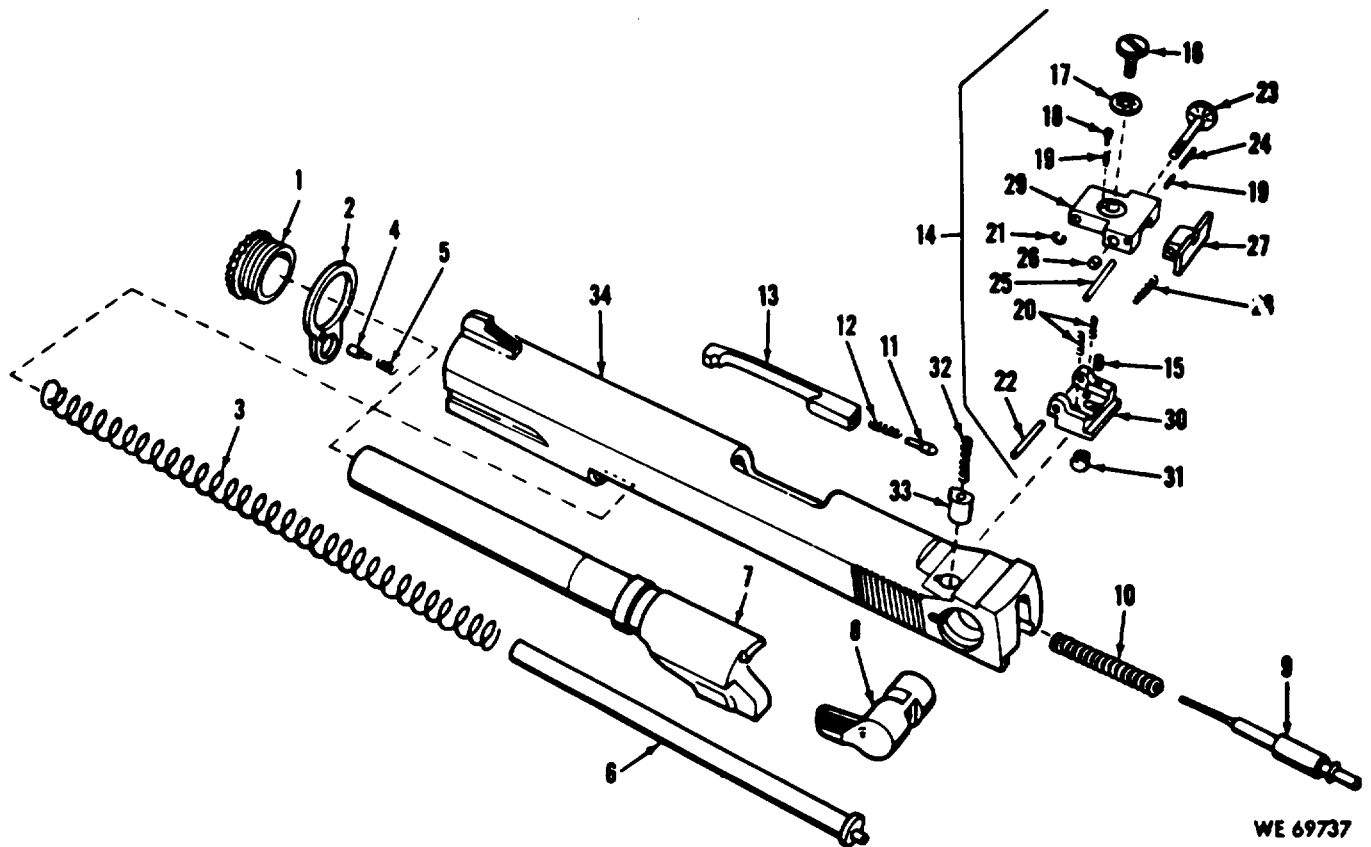
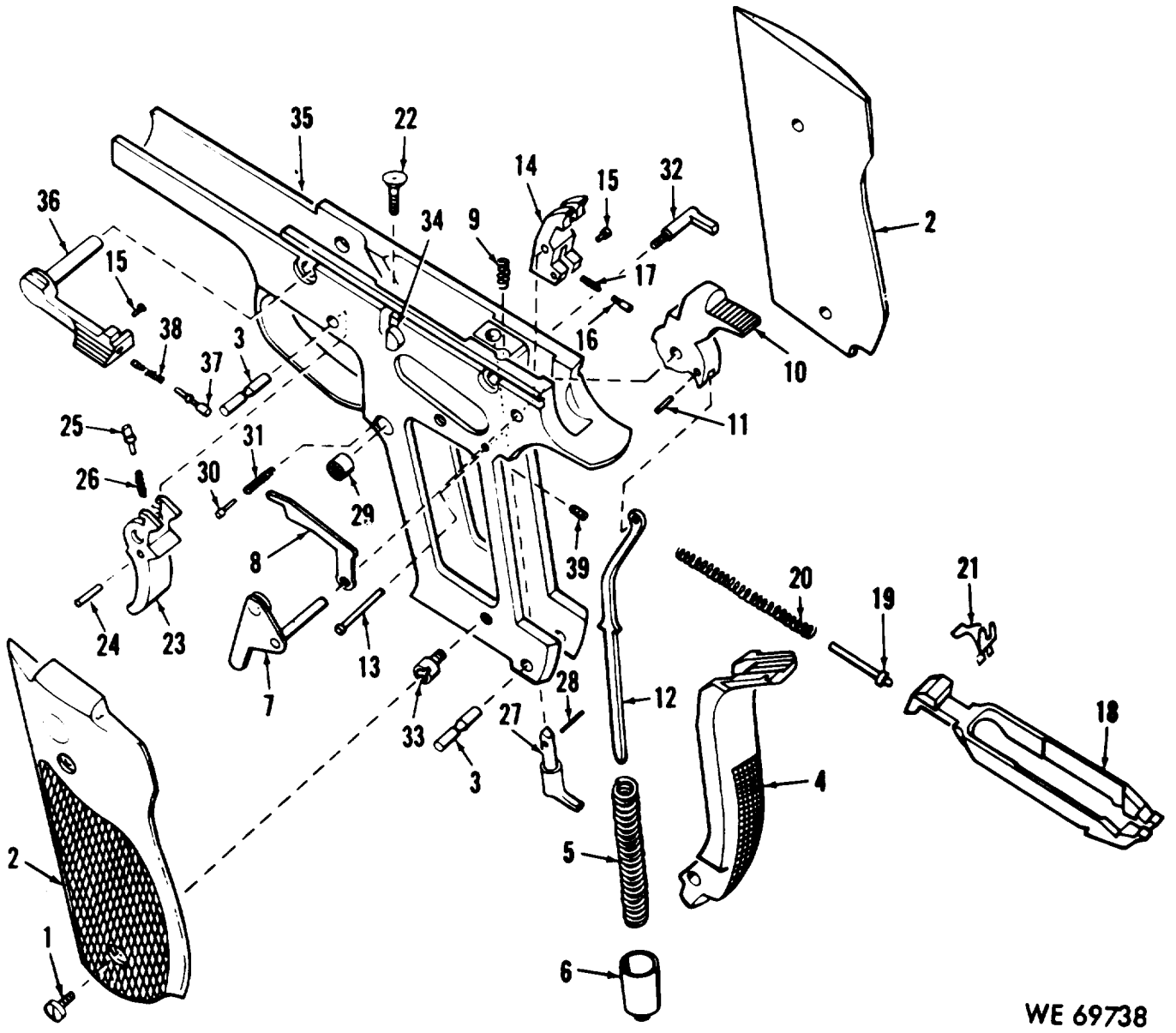


Figure 32. Slide and barrel group for Model 52 Smith and Wesson cal. .38 automatic pistol-exploded view.



WE 69738

Figure 33. Receiver assembly for Model 52 Smith and Wesson cal. .38 automatic pistol-exploded view.

Section VI. FEDERAL STOCK NUMBER AND REFERENCE NUMBER INDEX

<i>Stock Number</i>	<i>Figure No.</i>	<i>Item No.</i>	<i>Stock Number</i>	<i>Figure No.</i>	<i>Item No.</i>
1005-019-7870	33	16	1005-019-7929	33	23
1005-019-7871	33	24	1005-019-7930	33	22
1005-019-7872	32	33	1005-019-7931	33	39
1005-019-7873	33	9	1005-019-7932	33	6
1005-019-7874	32	9	1005-019-7933	32	13
1005-019-7875	33	3	1005-019-7934	33	33
1005-019-7876	31	2	1005-019-7935	33	10
1005-019-7877	33	29	1005-019-7936	33	1
1005-019-7878	32	20	3005-019-7937	32	1
	33	31	1005-019-7938	32	2
1005-019-7879	32	8	1005-019-7939	32	4
1005-019-7880	32	11	1005-019-7940	32	21
1005-019-7881	32	12	1005-019-7942	32	15
1005-019-7882	33	13	1005-019-7943	33	5
1005-019-7883	33	34	1005-019-7944	32	32
1005-019-7884	33	37	1005-019-7945	32	10
1005-019-7885	33	27	1005-019-7946	33	20
1005-019-7886	33	28	1005-019-7960	32	16
1005-019-7887	33	19	1005-317-2482	16	
1005-019-7888	33	15	1005-472-9103	25	3
1005-019-7889	33	17		29	3
1005-019-7890	33	7	1005-472-9920	19	21
1005-019-7891	33	25	1005-556-4102	8	2
1005-019-7892	33	26	1005-600-3913	19	7
1005-019-7877	33	29	1005-600-3974	20	15
1005-019-7895	33	21	1005-600-3976	20	2
1005-019-7896	33	12	1005-600-4057	18	2
1005-019-7897	33	11	1005-600-4097	19	23
1005-019-7898	33	18		20	14
1005-019-7899	33	8	1005-600-4123	19	5
1005-019-7901	30	1	1005-600-4326	19	4
1005-019-7902	31	1	1005-600-4370	19	9
1005-019-7903	33	32	1005-600-4373	20	13
1005-019-7904	31	5	1005-600-4389	20	5
1005-019-7905	31	4	1005-600-4392	20	35
1005-019-7906	31	3	1005-600-4426	20	36
1005-019-7907	31	6	1005-600-4428	20	21
1003-019-7908	33	36	1005-600-4432	20	37
1005-019-7909	33	38	1005-600-4435	20	26
1005-019-7910	32	14	1005-600-4438	20	30
1005-019-7911	32	30	1005-600-4439	20	27
1005-019-7912	32	29	1005-600-4440	20	28
1005-019-7913	32	27	1005-600-4464	19	6
1005-019-7914	32	22	1005-600-5147	11	17
1005-019-7915	32	31		15	18
1005-019-7917	32	25	1005-600-5160	11	19
1005-019-7918	32	24		15	20
1005-019-7919	32	23	1005-600-5169	11	13
1005-019-7920	32	26		15	14
1005-019-7921	32	28	1005-600-5178	11	16
1005-019-7922	32	7		15	16
1005-019-7923	32	3	1005-602-0936	20	7
1005-019-7924	32	6	1005-602-0937	20	8
1005-019-7925	32	34	1005-602-0942	20	12
1005-019-7926	33	4	1005-602-0945	20	11
1005-019-7927	32	17	1005-602-0985	20	17
1005-019-7928	33	14	1005-602-0986	20	20

**Section VI. FEDERAL STOCK NUMBER AND REFERENCE NUMBER INDEX
(Continued)**

<i>Stock Number</i>	<i>Figure No.</i>	<i>Item No.</i>	<i>Stock Number</i>	<i>Figure No.</i>	<i>Item No.</i>
1005-602-1056	20	32	1005-831-1277	23	2
1005-602-1063	20	18	1005-831-1278	23	1
1005-602-1188	20	31		29	11
1005-602-1207	20	34	1005-831-1279	24	7
1005-602-1268	20	16	1005-831-1280	24	8
1005-602-1270	20	23		28	8
1005-602-1301	20	22	1005-831-1281	24	9
1005-602-1331	20	3		28	9
1005-602-1332	19	26	1005-831-1282	24	4
1005-602-1333	19	25		28	4
1005-602-1339	19	15	1005-831-1283	24	5
1005-602-1340	19	16		28	5
1005-602-1342	19	14	1005-831-1286	25	22
1005-602-1350	19	17		29	20
1005-602-1401	19	20	1005-831-1287	25	11
1005-602-1733	19	22	1005-831-1289	21	1
1005-602-1734	19	19		26	1
1005-602-1767	20	19	1005-831-1290	22	1
1005-654-5236	19	11	1005-831-1291	25	36
1005-704-8548	19	8		29	33
1005-704-8555	17	1	1005-831-1292	25	35
1005-705-0395	17	2		29	32
	20	1	1005-831-1293	23	3
1005-705-0131	19	12	1005-831-1295	25	15
1005-707-6755	15	3		29	13
1005-712-8985	23	9	1005-831-1296	22	5
	27	5	1005-831-1297	22	3
	32	19	1005-831-1298	22	2
1005-712-9035	23	10	1005-831-1299	22	6
	27	6	1005-831-1301	25	4
	32	18		29	4
1005-715-2093	18	3	1005-831-1302	25	18
1005-715-7513	25	21		29	16
	29	19	1005-831-1304	25	8
1005-716-2132	8	1		29	8
1005-830-1623	32	5	1005-831-1305	25	7
1005-830-2513	23	13		29	7
	27	9	1005-831-1306	25	28
1005-830-2514	23	15		29	26
	27	11	1005-831-1307	29	26
1005-830-2515	23	14		29	22
	27	10	1005-831-1308	25	25
1005-830-2516	23	11		29	23
	27	7	1005-831-1309	25	26
1005-831-1268	25	12		29	24
	25	37	1005-831-1310	25	27
	29	34		29	25
	33	30	1005-831-1311	23	17
			1005-831-1312	23	6
1005-831-1269	25	38	1005-831-1313	23	16
	29	35		27	12
1005-831-1271	23	18	1005-831-1314	23	7
1005-831-1272	23	4		27	3
1005-831-1275	24	4	1005-831-1315	23	5
	28	6		27	1
1005-831-1276	24	3	1005-831-1316	23	12
	28	3		27	8

**Section VI. FEDERAL STOCK NUMBER AND REFERENCE NUMBER INDEX
(Continued)**

<i>Stock Number</i>	<i>Figure No.</i>	<i>Item No.</i>	<i>Stock Number</i>	<i>Figure No.</i>	<i>Item No.</i>
1005-831-1317	28	10	1005-831-1375	12	22
1005-831-1318	27	4	1005-831-1376	12	24
1005-831-1319	23	8	1005-831-1377	12	27
	27	4	1005-831-1378	12	26
1005-831-1320	27	13	1005-831-1379	12	31
1005-831-1321	24	2	1005-831-1380	12	16
	28	2	1005-831-1381	12	11
1005-831-1322	24	1	1005-831-1382	11	8
	28	1		15	9
1005-831-1323	25	20	1005-831-1383	11	9
	29	18		15	10
1005-831-1324	25	19	1005-831-1384	13	1
	29	17	1005-831-1385	14	1
1005-831-1325	24	10	1005-831-1386	14	2
1005-831-1326	27	14	1005-831-1387	11	4
1005-831-1327	25	32		15	4
	29	29	1005-831-1388	15	22
1005-831-1328	25	33	1005-831-1389	11	22
	29	30		15	23
1005-831-1329	25	10	1005-831-1390	15	5
	29	10	1005-831-1391	15	1
1005-831-1330	25	9	1005-831-1392	11	1
	29	9		15	2
1005-831-1334	25	1	1005-831-1394	11	12
	29	1		15	13
1005-831-1335	25	30	1005-831-1395	11	11
	29	28		15	12
1005-831-1336	25	23	1005-831-1396	11	18
	29	21		15	19
1005-831-1340	25	6	1005-831-1399	15	11
	29	6	1005-831-1400	12	15
1005-831-1342	22	4	1005-831-1401	11	7
1005-831-1344	25	29		15	8
	29	27	1005-831-1403	12	19
1005-831-1345	28	7	1005-831-1404	13	2
1005-831-1346	25	17	1005-831-1405	12	25
	29	15	1005-831-1406	12	28
1005-831-1347	25	13	1005-831-1407	12	30
1005-831-1348	25	16	1005-831-1408	12	9
	29	14	1005-831-1409	12	17
1005-831-1349	25	14	1005-831-1411	12	7
	29	12	1005-831-1412	11	14
1005-831-1350	25	31		15	15
1005-831-1362	15	7	1005-831-2202	25	5
1005-831-1363	15	6		29	5
1005-831-1364	12	18	1005-869-7967	29	2
1005-831-1365	12	10	1005-869-7968	12	2
1005-831-1366	12	14	1005-869-7970	20	9
1005-831-1367	12	13	1005-869-7974	33	2
1005-831-1368	12	12	1005-869-8839	25	2
1005-831-1369	12	29	1005-896-6172	18	1
1005-831-1370	12	6	1005-896-6173	19	10
1005-831-1371	12	5	1005-898-4195	12	3
1005-831-1372	12	4	1005-898-4196	11	3
1005-831-1373	12	8	1005-898-4197	11	15
1005-831-1374	12	23		15	17

**Section VI. FEDERAL STOCK NUMBER AND REFERENCE NUMBER INDEX
(Continued)**

<i>Stock Number</i>	<i>Figure No.</i>	<i>Item No.</i>	<i>Stock Number</i>	<i>Mfg. Code</i>	<i>Fig. No.</i>	<i>Item No.</i>	
1005-898-4198	12	20	1046	28627	20	15	
1005-898-4200	12	17	10461	28627	20	18	
1005-898-4201	11	5	10465	28627	20	31	
1005-898-4202	10	5	10471	28627	20	34	
1005-898-4203	9	1	10485	28627	20	16	
1005-898-4204	11	21	10520	28627	20	23	
1005-898-4205	11	10	10530	28627	20	22	
1005-898-4206	1	2	10625	28627	20	3	
1005-898-4207	11	6	10640	28627	19	26	
1005-898-4208	12	27	10645	28627	19	25	
1005-898-4209	10	3	10650	28627	19	13	
1005-898-4210	9	2	10654	28627	19	15	
1005-980-1740	20	39	10657	28627	19	16	
1650-600-4382	19	3	10660	28627	19	14	
3110-602-1746	19	18	10665	28627	19	17	
5305-898-4199	12	1	10670	28627	19	20	
5315-600-4387	19	2	10675	28627	19	21	
5315-600-4390	20	4	10680	28623	19	24	
5315-600-4427	20	33	10687	28627	19	22	
5315-600-4436	20	24	10690	28627	19	19	
5315-600-4442	20	25	10695	28627	19	18	
5315-600-4443	20	29	10858	28627	17	2	
5315-600-4450	20	38			20	1	
5315-602-1334	19	13	10911	28627	20	19	
5315-602-1493	19	24	10940	28627	19	12	
5315-654-2055	20	10	1099	28627	20	2	
Reference No	Mfg. Code	Fig. No.	Item No.				
1005	28627	19	11	1120	28627	18	3
10074	28627	19	10	1123	28627	20	10
10080	28627	20	13	1219	28627	18	2
10090	28627	19	3	1255	28627	19	23
10095	28627	19	2			20	14
10110	28627	20	5	1330	28627	19	5
10115	28627	20	4	1333	28627	19	4
10120	28627	20	35	1524	28627	18	1
10130	28627	20	36	3003	28627	19	9
10135	28627	20	33	3038-M	28627	17	1
10175	28627	20	21	320	28627	19	7
10180	28627	20	37	50143	13629	15	7
10200	28627	20	26	50144	13629	15	6
10210	28627	20	24	50147	13629	12	18
10215	28627	20	30	50148	13629	12	10
10220	28627	20	27	50151	13629	12	14
10221	28627	20	28	50152	13629	12	13
10225	28627	20	25	50153	13629	12	12
10230	28627	20	29	50156	13629	12	29
10251	28627	20	39	50159	13629	12	6
10255	28627	20	38	50160	13629	12	5
10270	28627	19	8	50161	13629	12	4
10301	28627	19	6	50162	13629	12	8
10345	28627	20	7	50163	13629	12	3
10346	28627	20	8	50165	13629	12	23
10375	28627	20	12	50166	13629	12	22
10390	28627	20	11	50167	13629	12	24
10420	28627	20	17	50169	13629	12	27
10425	28627	20	20	50170	13629	12	26
10440	28627	20	32	50173	13629	12	31
				50178	13629	12	16

**Section VI. FEDERAL STOCK NUMBER AND REFERENCE NUMBER INDEX
(Continued)**

<i>Reference No</i>	<i>Mfg. Code</i>	<i>Fig. No.</i>	<i>Item No.</i>	<i>Reference No</i>	<i>Mfg. Code</i>	<i>Fig. No.</i>	<i>Item No.</i>
50179	13629	12	11	51699	13629	13	2
50185	13629	11	8	51812	13629	12	25
		15	9	51815	13629	12	28
50186	13629	11	9	51816	13629	12	30
		15	10	51817	13629	12	9
50198	13629	13	1	51826	13629	12	17
50199	13629	14	1	51833	13629	12	1
50200	13629	14	2	51837	13629	12	7
50204	13629	15	3	51866	13629	12	17
50205	13629	11	4	51922	13629	11	14
		15	4			15	15
50238	13629	11	3	51981	13629	11	5
50271	13629	15	22	51983	13629	10	5
5045	55358	32	5	51989	13629	9	1
5102	55358	27	13	51991	13629	11	21
		27	9	51992	13629	11	10
5103	55358	23	9	51993	13629	11	2
		27	5	51996	13629	11	6
		32	19	51997	13629	12	27
5104	55358	23	10	52351	13629	10	3
		27	6	52374	13629	9	2
		32	18	5564102	19204	8	2
5105	55358	23	15	5910102	55358	25	2
		27	11	5910103	55358	29	2
5106	55358	23	14	5910104	13629	12	2
		27	10	5910300	28627	20	9
5107	55358	23	11	5910304	55358	33	2
		27	7	6011	55358	33	24
51192	13629	11	17	6013	55358	32	33
		15	18	6017	55358	33	9
51193	13629	11	19	6019	55358	32	9
		15	20	6031	55358	33	3
51194	13629	11	13	6036	55358	31	2
		15	14	6040	55358	33	29
51195	13629	11	16	6041	55358	25	37
		15	16			29	34
51272	13629	11	22			33	30
		15	23	6042	55358	32	20
51578	13629	15	5			33	31
51579	13629	15	1	6045	55358	25	5
51580	13629	11	1			29	5
		15	2	6049	55358	32	8
51646	13629	11	12	6051	55358	32	11
		15	13	6052	55358	32	12
51647	13629	11	11	6066	55358	33	13
		15	12	6069	55358	25	38
51648	13629	11	18			29	35
		15	19	6081	55358	33	34
51676	13629	15	11	6083	55358	33	37
51678	13629	12	15	6107	55358	33	27
51679	13629	11	7	6108	55358	33	28
		15	8	6110	55358	33	19
51683	13629	11	15	6114	55358	33	16
		15	17	6115	55358	33	15
51684	13629	12	19	6116	55358	33	17
51687	13629	12	20	6117	55358	33	7

**Section VI. FEDERAL STOCK NUMBER AND REFERENCE NUMBER INDEX
(Continued)**

<i>Stock Number</i>	<i>Figure No.</i>	<i>Item No.</i>	<i>Stock Number</i>	<i>Mfg. Code</i>	<i>Fig. No.</i>	<i>Item No.</i>	
6121	55358	33	25	6509	55358	24	3
6122	56358	33	26			28	3
6142	55358	33	21	6510	55358	23	2
6151	55358	33	12	6511	55358	23	1
6152	55358	33	11	6512	55358	24	7
6181	55358	33	18	6513	55358	24	8
6182	55358	33	8			28	8
6184	55358	30	1				
6185	55358	31	1	6514	55358	24	9
6186	55358	33	32			28	9
6187	55358	31	5	6515	55358	24	4
6188	55358	31	4			28	4
6189	55358	31	3	6516	55358	24	5
6190	55358	31	6			28	5
6193	55358	33	36	6521	55358	25	22
6194	55358	33	38			29	20
6195	55358	32	14	6522	55358	25	21
6196	55358	32	30			29	19
6197	55358	32	29	6523	55358	25	11
6198	55358	32	27			29	11
6199	55358	32	22	6526	55358	25	12
6200	55358	32	31	6527	55358	21	1
6201	55358	32	16			26	1
6202	55358	32	25	6528	55358	22	1
6203	55358	32	24	6529	55358	25	36
6204	55358	32	23			29	33
6205	55358	32	26	6530	55358	25	35
6206	55358	32	28			29	32
6207	55358	32	7	6531	55358	23	3
6208	55358	32	3	6535	55358	25	15
6209	55358	32	6			29	13
6210	55358	32	34	6536	55358	22	5
6211	55358	33	4	6537	55358	25	3
6212	55358	32	17			29	3
6213	55358	33	14	6538	55358	22	3
6214	55358	33	23	6539	55358	22	2
6215	55358	33	2	6540	55358	22	6
6216	55358	33	39	6542	55358	25	3
6217	55358	33	6			29	4
6218	55358	32	13	6543	55358	25	18
6219	55358	33	33			29	16
6220	55358	33	10	6545	55358	25	8
6221	55358	33	1			29	8
6224	55358	32	2	6547	55358	25	7
6223	55358	32	1			29	7
6225	55358	32	4	6548	55358	25	28
6226	55358	32	21			29	26
6228	55358	32	15	6549	55358	25	24
6229	55358	33	5			29	22
6230	55358	32	32	6550	55358	25	25
6231	55358	32	10			29	23
6232	55358	33	20	6551	53358	25	26
6502	55358	23	18			29	24
6504	55358	23	4	6552	55358	25	27
6508	55358	24	6			29	25
		28	6	6553	55358	23	17

**Section VI. FEDERAL STOCK NUMBER AND REFERENCE NUMBER INDEX
(Continued)**

<i>Stock Number</i>	<i>Figure No.</i>	<i>Item No.</i>	<i>Stock Number</i>	<i>Mfg. Code</i>	<i>Fig. No.</i>	<i>Item No.</i>	
6554	55358	23	6	6574	55358	25	10
6555	55358	23	16			29	10
		27	12	6575	55358	25	9
6556	55358	23	7			29	9
		27	3	6579	55358	25	1
6557	55358	23	5			29	1
		27	1	6580	55358	25	so
6558	55358	23	12			29	28
		27	8	6581	55358	25	23
6559	55358	28	10			29	21
6561	55358	23	8	6586	5558	25	6
		27	4			29	6
6562	55358	27	13	6589	56358	22	4
6563	55358	24	2	6591	55358	25	29
		28	2			29	27
6564	55358	24	1	6592	55358	28	7
		28	1	6593	56358	25	17
6565	55358	25	20			29	15
		29	18	6595	55858	25	13
6566	55358	25	19	6597	55358	25	16
		29	17			29	14
6568	55358	24	10	6598	55358	25	14
6569	55358	27	14			29	12
6570	55358	25	32	6602	55358	25	81
		29	29	7162132	19205	8	1
6572	55358	25	33	7312785	18629	16	
		29	30				

By Order of the Secretary of the Army:

Official:

VERNE L.. BOWERS,
Major General, United States Army,
The Adjutant General

W. C. WESTMORELAND,
General United States Army,
Chief of Staff

Distribution:

To be distributed in accordance with DA Form 1240 (qty rqr block no. 144) Organizational maintenance requirements for Commercial Rifle.

☆U.S. GOVERNMENT PRINTING OFFICE: 1996-406-421/50008

RECOMMENDED CHANGES TO EQUIPMENT TECHNICAL PUBLICATIONS



THEN... JOT DOWN THE DOPE ABOUT IT ON THIS FORM, CAREFULLY TEAR IT OUT, FOLD IT AND DROP IT IN THE MAIL!

SOMETHING WRONG WITH THIS PUBLICATION?

FROM: (PRINT YOUR UNIT'S COMPLETE ADDRESS)

DATE SENT

PUBLICATION NUMBER

PUBLICATION DATE

PUBLICATION TITLE

BE EXACT... PIN-POINT WHERE IT IS

PAGE NO.

PARA-GRAPH

FIGURE NO.

TABLE NO.

IN THIS SPACE TELL WHAT IS WRONG AND WHAT SHOULD BE DONE ABOUT IT:

TEAR ALONG PERFORATED LINE

PRINTED NAME, GRADE OR TITLE, AND TELEPHONE NUMBER

SIGN HERE:

DA FORM 2028-2
1 JUL 79

PREVIOUS EDITIONS ARE OBSOLETE.

P.S.—IF YOUR OUTFIT WANTS TO KNOW ABOUT YOUR RECOMMENDATION MAKE A CARBON COPY OF THIS AND GIVE IT TO YOUR HEADQUARTERS.

