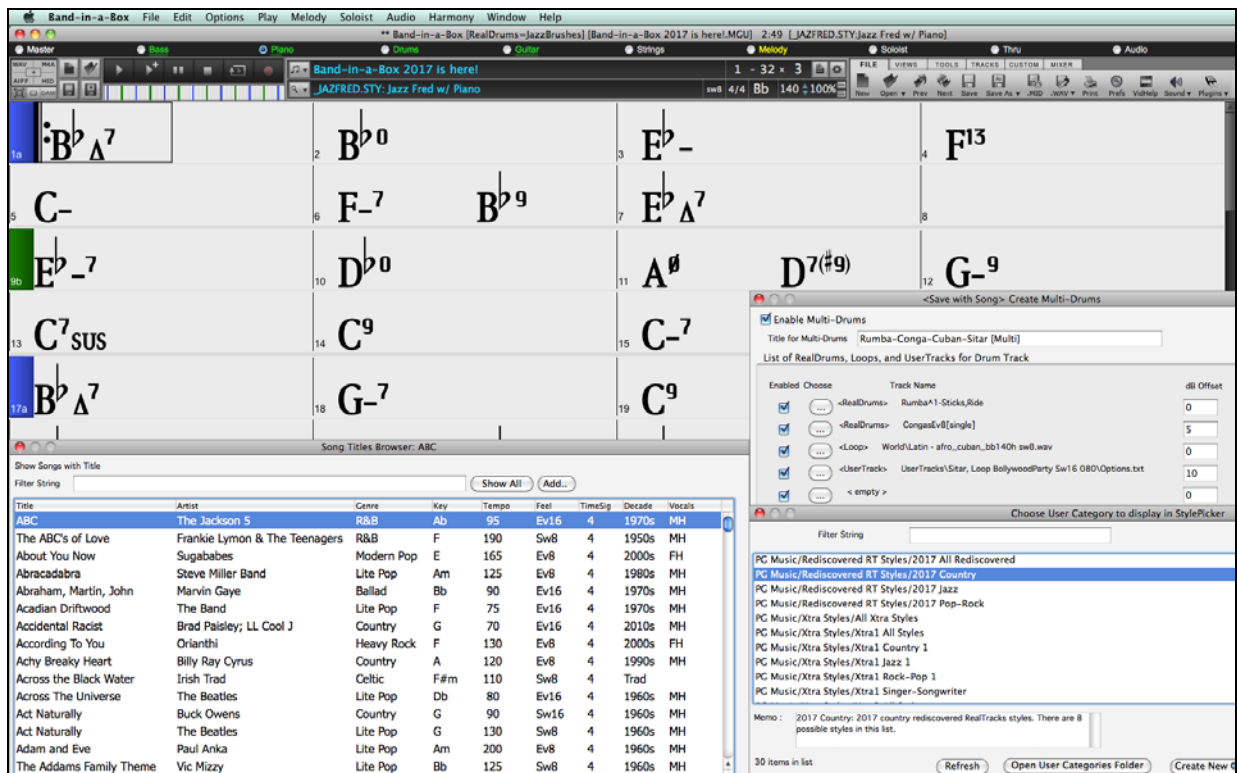


BAND IN A BOX®

Version 2017 for Mac®



New Features Guide

© Copyright PG Music Inc. 1989-2017. All rights reserved.

PG Music Inc. License Agreements

CAREFULLY READ THE FOLLOWING TERMS AND CONDITIONS BEFORE COMPLETING THE INSTALLATION OF THIS SOFTWARE. USAGE OF THE SOFTWARE INDICATES YOUR ACCEPTANCE OF THE FOLLOWING TERMS AND CONDITIONS.

LICENSE

- A. The program may only be used on a single machine.
- B. You may transfer the program and license to another party if the other party agrees to accept the terms of this Agreement. If you transfer the program, you must either transfer all copies, whether in printed or machine readable form, to the same party, or, destroy all copies not transferred. This includes all modifications and/or portions of the program merged into other programs.
- C. You may receive the program in more than one media. Regardless of the type or size of media you receive, you may install or use the media on a single machine.
- D. The program (including any images, “applets,” photographs, animations, video, audio, music, and text incorporated into the program) is owned by PG Music Inc. or its suppliers, and is protected by international copyright laws and international treaty provisions.

You may not use, copy, or transfer the program, or any copy, modification or merged portion of the program, in whole or in part, except as expressly provided for in this license. If you transfer possession of any copy, modification or merged portion of the program to another party, your license is automatically terminated.

Some programs such as Band-in-a-Box® have a ‘server’ function (including BandInABoxServer.exe program) to connect to a ‘Client’ (mobile client version of Band-in-a-Box® on iPhone or other mobile device). You are only licensed to connect the Server function (including BandInABoxServer.exe program) to Clients where you own or have properly licensed both the Client and Server software that is being connected, not to clients or Server software owned/licensed by third parties. The preceding also applies to any other PG Music products (RealBand etc.) with a similar type of connection between a Server program and a Client.

LIMITATION OF REMEDIES

PG Music Inc.’s entire liability and your exclusive remedy shall be:

- A. The replacement of any media not meeting PG Music Inc.’s “Limited Warranty,” which are returned to PG Music Inc., or an authorized PG Music Inc. dealer, with a copy of your receipt.
- B. If PG Music Inc. or the authorized dealer is unable to deliver replacement media which is free of defects in materials or workmanship, you may terminate this agreement, and your money will be refunded.

In no event will PG Music Inc. be liable to you for any damages, including but not limited to lost profits, lost savings, or other incidental or consequential damages arising out of the use or the inability to use such program, even if PG Music Inc. or an authorized PG Music Inc. dealer has been advised of the possibility of such damages, or for any claim by any other party.

TRADEMARKS

Band-in-a-Box®, Band-in-a-Box for Bozos®, CloudTracks®, GuitarStar®, JazzU®, PG Music®, PowerTracks Pro®, RealBand®, RealDrums®, RealStyles®, and RealTracks® are either the trademarks or registered trademarks of PG Music Inc. in the United States, Canada, and other countries. Microsoft® and Windows® are either registered trademarks or trademarks of Microsoft Corporation in the United States and/or other countries. Apple®, the Apple logo, iPad™, iPhone®, iPod touch®, Leopard®, Macintosh®, Mac®, Panther®, Power Mac®, QuickTime®, Snow Leopard®, Tiger®, and TrueType® are trademarks of Apple Computer, Inc., registered in the U.S. and other countries. IBM® is the registered trademark of International Business Machines Corporation. Roland® and “Roland” Logo, EDIROL® and “EDIROL” Logo, GS® and “GS” Logo, are registered trademarks and “MIDI2” Logo, EDIROL Virtual Sound Canvas Multi Pack, VSC-MP1™ are trademarks of Roland Corporation. Steinberg and ASIO are trademarks of Steinberg Media Technologies AG. VST is a registered trademark of Steinberg Media Technologies AG. Amplitube® and SampleTank® are registered trademarks of IK Multimedia Production srl. Fretlight® is a registered trademark of Optek Music Systems, Inc. Other brands and their products are trademarks or registered trademarks of their respective holders and should be noted as such.

PATENTS

Band-in-a-Box® is protected under US Patents 5990407, 8097801, 8581085, and 8680387. The TC-Helicon Harmony feature in Band-in-a-Box® and PowerTracks Pro® Audio is protected under US Patents 5567901, 5641926, 5986198, 34583, 296.80.173.9, PI9603819.5, 0368046, 0750776, 6,046,395, and patents pending.

Printed in Canada

Table of Contents

PG Music Inc. License Agreements	2
Table of Contents	3
Chapter 1: Introduction.....	4
Chapter 2: Summary of New Features.....	6
Chapter 3: Introduction to Band-in-a-Box 2017.....	10
Improved GUI for Main Screen.....	10
sforzando SFZ Synth	11
Chord Builder Enhanced with “Chord Theory” Section.....	14
Drums Track Enhancements.....	14
Pitch Shifting and Tempo Stretching Enhancement	18
12-Key “Woodshedding” RealTracks	18
Hi-Q Guitar RealCharts	19
Song Titles Browser	19
VST Sync Enhancement.....	21
RealTracks Enhancements.....	21
UserTracks Enhancements.....	21
Notation Enhancements	23
Chord Sheet and Layers Enhancements.....	25
Natural Arrangements Option.....	26
Audio Edit Window Enhancement	26
Hot Key Added to loop the highlighted region.....	27
StylePicker Enhancements.....	27
Loops Enhancements	32
Tap Tempo Enhancement	33
Other Features	33
PG Music Inc.....	34

Chapter 1: Introduction

Congratulations on your purchase of Band-in-a-Box 2017 for Mac®!

This documentation covers the new features in Band-in-a-Box 2017. The *Help* menu has a link to the full manual.

Band-in-a-Box® 2017 for Mac® is here!

We've been busy and added over **80 new features and an amazing collection of new content, including 202 RealTracks, 34 MIDI SuperTracks, Instrumental Studies, 12-Key RealTracks, Hi-Q Guitar Notation, Re-Discovered RealTracks/MIDI SuperTracks styles, a new synthesizer (sforzando), and over 120 new RealStyles!** We've added **202 new RealTracks**, double the 101 that we've usually released in the past! There's a new Instrumental Studies Set with 12-Key Hi-Q Guitar tab. Some previous RealTracks have been **re-mastered to improve fidelity**. We also have over 120 new **RealStyles**, which are new styles using new RealTracks and Loops. These include great Crooner Bossa, Crooner Ballad, Brent/Mike Blues, Hawaiian, Mexican, Peruvian, Power Trios, House, Hip-Hop, Rap, Celtic Harp, Retro 60s, and more.

We've also released a new **Celtic Guitar Video Master Class Series** with Quinn Bachand (3 Volumes, each one hour), and a new **Xtra Styles PAK Volume 2** with 161 new Xtra styles. (Xtra styles are styles based on combinations of previously released RealTracks.)

We have **Bonus 49-PAK** available with **24 Bonus additional new RealTracks** on top of the 202 above, so in total an amazing **226 new RealTracks** are available! The Bonus PAKs also include up to **34 new MIDI SuperTracks**, and **59 Re-Discovered RealTracks/MIDI SuperTracks styles** (styles using previous RealTracks or MIDI SuperTracks that were never included in any previous release).

Band-in-a-Box 2017 Features and Additions

There are over **80 exciting new features** in Band-in-a-Box 2017! The **main screen GUI has been redesigned** with a new smaller footprint, configurable toolbars, a tabbed interface, a progress bar, and more. RealTracks sound better than ever with **improved stretching/transposition quality (Elastique 3), better phrase transitions, and Natural Arrangements**. There are many **RealDrums enhancements** including **Half/Double/Triple time, Multiple Drums/Percussions/Loops** on one Drums track, and more. We've added new "Woodshedding" RealTracks called **12-Key Guitar RealTracks** from **Brent Mason** played in 12 keys with **Hi-Q (precise) Tab/Notation** that are ideal for studying and learning. There is a dedicated **Song Titles Browser** with metadata info on over 8,000 popular songs. There are many **UserTracks enhancements** including **Half/Double/Triple-time, rests, 3/4 waltz support, and more**. **Guitar Tab/Notation** has been improved with graphical display of **bends, hammer-ons, pull-offs, and slides**. **GuitarPro, Finale, and Sibelius XML files that are imported to Band-in-a-Box are enhanced** with these guitar features. Improved XML chord transfer, optimized for these popular programs. The Chord Sheet has been enhanced, including a layer menu with options to change height of the layer, copy/cut/paste, etc., new layers displaying chords from **two-keys-at-once**, and more. **StylePicker improvements** including User Categories, custom lists, prototype style sort, custom memos, and faster operations. Chord Builder's **Chord Theory section** allows chord entry using/explaining common pop/jazz chords in song key. **Audio editing enhanced** with custom time stretching, Edit button menu, and Settings dialog. A new **sforzando SFZ Synth** is included. Notation is improved with a **rapid notation entry for guitar and piano music and large yellow timeline**. And many more!

Band-in-a-Box 2017 New Content

With Band-in-a-Box 2017, we've released **226 RealTracks, 34 MIDI SuperTracks, Instrumental Studies, 12-Key RealTracks, Hi-Q Guitar Notation, Celtic Guitar Video Master Class, Xtra Styles PAK 2, Re-Discovered RealTracks/MIDI SuperTracks styles, a new synthesizer (sforzando) and over 100 new RealStyles!**

This includes...

202 RealTracks with great new Pop, Rock, Jazz, Blues, Funk, Country, and World styles. These include:

- 63 Country, Folk and World RealTracks

These are an amazing collection, with many "firsts," including **Latin American** styles (14 RealTracks) (from **Mexico and Peru**), **Celtic Harp** (4), and **Hawaiian Pedal Steel** (3) and **Ukulele** (2). Songwriter's **Guitar and Cello** toolkit (13), **Modern Pedal Steel** (4). Fifteen new Nylon and Acoustic Guitar Country RealTracks from the great **Brent Mason** (15). New **Old Time** and **Celtic** RealTracks (4) from **Quinn Bachand**. And introducing Shannon Forrest - we have Great Country Drums sets from **Shannon Forrest** (5) (Nashville's "hit-maker" -

Shannon has played on more Top 10 hits than any drummer in Nashville for seven years running and won CMA Drummer of the Year).

- 61 Jazz, Funk and Blues RealTracks

Building on the “big hit” Crooner Swing Big Band released in 2016, we have new **Crooner Bossa Big Band** (9 piece horns) and **Crooner Ballad Big Band** (9 piece) from **Jim Clark**. All 9 horns (trumpets/saxes) play together, or you can mix/match the individual horns on their own. **Sixteen Great Blues RealTracks** styles added by **Brent Mason** (multi winner of CMA guitarist of the year) and **Mike Rojas** (CMA pianist of the year). Gypsy Accordion styles (2) by multiple World Champion **Cory Pesaturo**. **Smooth Soul RealTracks** (12) from Brent Mason and Mike Rojas.

- 78 Rock and Pop RealTracks

Hard Rock – Power Trios - Guitar/Bass and Drums **Shuffle and Even Rock** with multiple feels (25 RealTracks). Modern **House, HipHop and Rap** RealTracks (24). **Zane Carney** is back with Modern Pop RealTracks (6 - Waltzes and 8th notes). Zane is perhaps best known as John Mayer’s guitarist, but also well-established in his own right. **Shannon Forrest** (CMA Drummer of the Year) with the most common Drum Pop/Rock grooves of RealTracks (11). **Retro 60’s grooves** for **Surf, Motown** and Classic Rock (6). Percussion single instruments (**Tambourine, Congas**, etc.) to add to other drum parts (6). And more!

Our “Bonus 49-PAK” contains great additional content for Band-in-a-Box! These include:

- 24 additional RealTracks:

This great collection of 24 additional RealTracks includes very exciting styles. We have Mexican Norteno and Mariachi (4). There are Brent Mason Soloists and Simple Soloists (4). 12-Key Jazz Guitar Comping with Oliver Gannon (2). 12-Key Country Pedal Steel from Eddy Dunlap (2). Punk Drums (2). Mike Rojas Organ and Piano Country Rock (5). And more!

- 34 new MIDI SuperTracks:

We have 34 new MIDI SuperTracks covering many different genres: Pop, Soul, Country, Folk, Jazz, Funk, and Blues. This brings the total number of MIDI SuperTracks to over 200! Because these are MIDI, you can pick whatever patches or synths you want to generate the sound, giving you complete control over the final product!

- 59 Re-Discovered Styles (36 RealTracks Styles and 23 MIDI SuperTracks Styles):

We have over 2,500 RealTracks and 200 MIDI SuperTracks. We reviewed them to ensure that every RealTracks or MIDI SuperTracks was used in at least one style, and we discovered 36 RealTracks and 23 MIDI SuperTracks that were not used in any styles! These are RealTracks or MIDI SuperTracks that you likely have already, but have never heard because there wasn’t a style made using them (unless you added the RealTrack/MST to a song yourself). So we have re-discovered these styles for you by creating styles that use them. Organ comping and soloing, piano comping, and guitar have been “re-discovered.”

- 22 New Instrumental Studies:

We introduced the idea of “Instrumental Studies” last year with guitar studies, and this year we’ve expanded the concept to include piano, bass, guitar, and sax. There are 22 studies that you can explore and learn on these instruments in a variety of genres.

Additional contents sold separately

We also have new products available as add-ons, and for use with Band-in-a-Box 2017. Note: These items are sold separately and not included with a Band-in-a-Box package or Bonus PAK.

- **Xtra Styles PAK 2 (Released Dec. 2016)**. Rock-Pop 2, Jazz 2, Country 2, and Bluegrass and World 2, each with 35 styles.

- **Xtra Styles PAK 1 (Previously released Aug. 2016)**. Rock-Pop 1, Jazz 1, Country 1, and Singer/Songwriter 1, each with over 30 styles.

- **Celtic Guitar Video Master Class series with Quinn Bachand**. This is a video Master Class with world-class Celtic guitarist Quinn Bachand. Band-in-a-Box users are familiar with Quinn’s playing on many of the RealTracks, including the Celtic guitar, Bodhran, Irish Bouzouki, and banjo. Quinn has not only mastered Celtic guitar, he did so at a very young age, and is also an expert on jazz and gypsy guitar. He is a great teacher, and knows all the theory and terminology to describe what he is teaching. These videos are highly recommended. There are 3 volumes, each one hour long. Quinn cover techniques, chord theory, voicings and walks you through 17 “must-know” tunes. This is for the beginner-advanced guitarist, and covers Celtic guitar styles (some folk and old-time covered as well).

Chapter 2: Summary of New Features

We've added over 80 new features to Band-in-a-Box 2017, including...

GUI for main screen has been redesigned. The previous version of Band-in-a-Box (2016) had a large toolbar that was not configurable. We have redesigned the main screen with many requested improvements, including a new smaller footprint, configurable toolbars, a tabbed interface, the progress bar, and more. The toolbar area is now 1/3 of the previous vertical height. All of the same buttons are available through the tabbed interface. Select a toolbar on the tabs and then the button you want to use. Re-order the buttons by drag and drop. Customize your own toolbar by adding any buttons in any order. Use the floating, movable, resizable mixer.

- There are three modes for the toolbar.
 1. New, smaller, configurable toolbar with tabbed interface.
 2. Old, taller toolbar, with fixed on-screen mixer. This is useful for people with hi-res screens.
 3. DAW mode. This makes a small screen, always on top. This is useful for drag and drop of files to your favorite DAW.
- The Progress Bar has been added. This bar displays a timeline for the current song. The current time is marked with a gray vertical line. You can click on the bar to move the current time to that point. Part markers are marked with colored (blue, green, etc.) vertical lines and the beginning of each chorus is marked with outlines. You can double click on the bar to start playback from that point.
- The Drop Station now has an additional drop target, labeled + button, to allow a configurable rendering. When you drop to the + button, you are presented with a dialog, where you can choose a file format (WAV/AIF/M4A/MID), and other render options (acidize, normalize, and separate tracks).
- The title area of the main screen has a new display for feel (e.g. Ev16) and time signature (4/4).
- In the small toolbar mode, the Custom tab lets you select and add buttons in the order that you want.
- The menu for the individual tracks, accessed from the track radio buttons or the Mixer, has been reorganized into groups allowing easier selection of track types: audio (RealTracks, UserTracks, Loops) or MIDI (MIDI SuperTracks, classic MIDI tracks) and track settings/actions.

sforzando SFZ Synth. In mid 2016, we added a new VST Synthesizer, and since then we've added support for popular .SFZ sound format as well as PG Music's Hi-Q sounds. Many sounds that have been developed with the .SFZ format are available on the internet, and are ready to play with Band-in-a-Box using this synth. Your existing Band-in-a-Box Hi-Q sounds will play using this synthesizer, so previous songs or styles you made will play with this new synth. This synth is installed with Band-in-a-Box, and is ready to play and does not require configuration.

Chord Builder has been enhanced with "Chord Theory" section. The Chord Theory section displays and suggests chords that are most popular in the current key. The top row is diatonic chords. Other rows add additional chords that are part of the key, such as Dominant 7th approach, Slash Chords, Parallel Minor, Diminished, and more. This allows you to quickly enter chords by clicking on the most common chords in the key. For example, if you stick to the top row (diatonic), the chord progression will be a typical song progression. Choosing from additional row will add variation and color to the progression. This is a fun, interactive way to enter and explore chord progressions, and learn music chord theory at the same time.

There are many RealDrums enhancements including selectable timebase (Half/Double/Triple-time), Single Drums, Multiple Drums/Percussions/Loops, and more.

- The Multi-Drums feature has been added. This feature allows you to put multiple drum/percussion parts, drum loops, UserTracks drums, and even RealTracks on the same Drums track, with volume mixer adjusting levels.
- Single Drums have been added. These are RealDrums that just have a single percussion instrument like tambourine, shaker, or bongos.
- Drums can have selectable timebase: Double-time (Cut-time), Half-time, or Triple-time. Timebase can be stored with song, style, or RealDrums.
- RealDrums can now be added to any track, not just the Drums track, so you can have more than one drums track. When there are multiple drums tracks in a song, they will be automatically called Drums 1, Drums 2 etc.
- RealDrums Shots/Pushes/Rests now work with style changes and frozen Drums track.
- The RealDrums Picker window now opens much faster despite having more entries. Previously, it took up to 5 seconds for the window to open on slower machines, but now, it opens in less than a second.

Tempo pitch shifting and tempo stretching has been greatly enhanced with the integration of the newest version of the world-leading Elastique (version 3, previously version 2). This allows higher quality and sound retains timbre with extreme tempo changes or transpositions. This works automatically.

12-Key “Woodshedding” RealTracks. Many people use the RealTracks feature in Band-in-a-Box to learn how to “play like the pros.” This is because you can see notation, tab, on-screen guitar, and more as you hear the music. Now we’ve taken this to a higher level by providing some “12-Key” RealTracks that have been recorded in all 12 keys. In previous versions, you might decide to learn to play by studying the parts played by the RealTracks artists, and watch the notation to do so. Many people have found this a great way to learn, but it had the following issues.

- Since RealTracks were based on only 5 keys, they were transposed much of the time, which would make the guitar part unplayable for a student in some cases.
- The tab/notation was good for guitar, but lacked some precision and graphical representation of bends, pull-offs, hammer-ons, and pull-offs.

So we have solved that by creating some Guitar RealTracks with:

- recording in all 12 keys. So you can see what a pro would play over an Ab chord, and you won’t see them play on a G transposed up to an Ab,
- and carefully transcribed notation, with correct bend/hammer-ons, pull-offs, and slides.

So now you (we!) students have no more excuses! You can watch and learn from the pros!

We have made some of these for country guitar (Brent Mason), piano (Mike Rojas), and pedal steel (Eddy Dunlap). For guitar, this means that they are typically generated with no transpositions on any chord so that you can learn by copying exactly what you see on the fretboard. In combination with another new feature we have (Hi-Q RealCharts and guitar display), this gives you great notation and guitar display.

Hi-Q Guitar RealCharts are available with highly accurate and readable notation, including new graphical markings for bends, slides, hammer-ons, and pull-offs. We have some amazing new RealTracks from Brent Mason, in 12-keys with Hi-Q notation showing exactly what is being played! To see these in action, load in one of the 12-key Hi-Q notation RealTracks by Brent Mason. You can also enter your own guitar notation using these features. Just right click on a note to set its properties to include bends, slides, hammer-ons, and pull-offs.

Song Titles Browser Window has been added. The popular Song Title feature, which allows you to type in the name of a familiar song and find a style with similar feel and tempo, has been enhanced with a dedicated Song Titles Browser window. This window allows you to browse and filter the huge list of over 8,000 popular song titles. You can, for example, filter the list by a certain artist, and then sort by tempo, key, feel, time signature, and more. Once you have found a song, pressing a button will take you to the StylePicker with the styles that best match the tempo, feel, and genre of the selected song title. For example, you can find all popular songs that are waltz in the Key of Eb, with a tempo slower than 100. This might be useful for making a medley or seeing a list of song titles that share the same key, tempo, and feel. We’ve also added over 500 new songs to the database, filling in some missing genres and new songs from 2016 as well as some classics.

VST sync has been enhanced. In late 2016, we added much requested support for VSTs that require tempo information to sync to. This has been enhanced with support for time signature and tempo changes. Many VSTs like Addictive Drums or Rapid Composer need this tempo information to sync to Band-in-a-Box.

RealTracks have been enhanced.

- The Tempo Swap feature for RealTracks has been enhanced, and it happens more intelligently now. Since the tempo stretching has been improved, we have also widened the tempo range before a tempo swap to a new RealTracks would occur.
- In addition, new features discussed elsewhere have improved the sound of RealTracks.
 - Improved sound when stretching tempos or transposing using Elastique 3.
 - Natural Arrangement option. See the description elsewhere.
 - 202 new RealTracks with version 2017!

UserTracks have been enhanced.

- UserTracks now support 3/4 waltz time signature. Just make a UserTracks as normal, and save the Band-in-a-Box song with your UserTracks in 3/4 (i.e. save using a waltz style).
- Rests now work with UserTracks. Shots and Holds now also rest instead of continuing to play. There are no changes to the UserTracks needed. Just add period(s) to chords, and the existing UserTracks will follow them.

(Note: There is no specific support for shots or holds by UserTracks. They will just rest when these are encountered.)

- Timebase (Normal, Half-time, Double-time, or Triple-time) can be selected for any UserTracks from the UserTracks dialog or the track button right click menu.
- UserTracks can be made and preset to a timebase by the user.
- Option for no-transpose is now supported for UserTracks on any track.
- Option for ignoring slash notes like the “B” on a G/B chord (just play a “G” chord) is now supported for any UserTrack.
- Styles with UserTracks are now displayed in the StylePicker with the name of the UserTracks.

Notation has been enhanced.

- The Guitar Tab/Notation display has been enhanced. You can now enter and display bends, slides, hammer-ons, and pull-offs with notation graphics indicating these elements.
- The notation timeline is much more visible while editing, as it is a yellow wide transparent vertical line on the notation.
- A rapid notation entry mode has been added for piano and guitar music. To do this, open the Piano or Guitar window, use the new feature to have the right/left cursor keys set to the current notation position, and then click on the piano or guitar to enter notes. This is much faster than previous methods in many cases.
- Entry of Forced Accidentals is quicker now, without a pull-down list required.
- RealScore Chords font is now selectable on the Notation window fonts menu.
- BeStPlain chord font, which uses a triangle for major, a minus sign for minor, and a half or full circle for half or full diminished chords can now be used for chords in the Notation window.
- Music XML (notation export/import) has been enhanced. We’ve worked with Finale, GuitarPro, and Sibelius to enhance features and compatibility with Music XML. For example, Band-in-a-Box can now read/write more chord types to/from XML files, and import guitar tab, bends, hammer-ons, pull-offs, and slides from XML files.

The Chord Sheet and Layers have been enhanced.

- Right clicking in a layer now has a menu with options to change height of the layer, close layer(s), copy/cut/paste, etc.
- Normal chord display can be shown on the additional chord display layer.
- The “Concert Key” option has been added to display an additional chord display of the same chords transposed to a different key. So, for example, you can see two layers, one with concert chords and the other for Bb instruments.
- “Insert Bars” and “Delete Bars” have been added to the right click menu.
- Chords preview works faster with shift+return keys.

Natural Arrangements option has been added. If you give a pro musician a complicated chord progression with fancy extensions like C7b9b13 or Gm11, the musician may reinterpret these rather than playing them exactly as written. This can achieve a much better sounding arrangement because the musician has freedom to choose from similar chord extensions. Now you can get Band-in-a-Box to do the same thing; you can set this on a global basis (all songs, all tracks), song basis (current song, all tracks), or individual tracks (current song, specific track(s)).

Audio editing has been improved.

- There is a new dedicated [Edit] menu that gives you access to new audio editing features - silence, amplify, normalize, fade in, fade out, transpose, and scan for frequency. You can also access the new Settings dialog, which allows you to customize the appearance of the Audio Edit Window by choosing colors. You can change the quality setting of interpolation, or turn it off completely (quality vs. drawing speed). There is also an automatic feature to “auto cross-fade regions.” When a region of audio is being modified or replaced, the beginning and ending of the region will be cross-faded with the existing audio to make a smooth transition. This applies to Cut, Paste, Silence, Amplify, and Normalize.
- We have also added some handy features for stretching regions of audio. To use this feature, select a region of audio, then click & drag while holding the Command key. Clicking within the region and dragging to somewhere else within the region will stretch both halves of the region (one will become longer, and the other will become shorter). Clicking outside the region and dragging to somewhere in the region will shorten the region. Clicking

within the region and dragging to somewhere outside the region will lengthen the region. These features can be useful for quantizing beats, or correcting mistakes in a recording.

A hot key has been added to loop the highlighted region.

Select a region on the Chord Sheet and press the [F10] key to play and loop the selected region.

StylePicker has been enhanced.

- You can quickly launch the StylePicker window by S+return shortcut keys.
- A scroll button has been added.
- There is now a volume control for audio demo, so if the demo is too loud/soft relative to your other music, you can independently control this.
- The Action button to perform new functions has been added.
- User Categories have been added.
 - Unlimited User Categories can be created by users or third parties, to list their styles in the StylePicker by choosing their category.
 - You can make your own User Category. Simply right click on the StylePicker, choose a name for your category, and then right click to add/remove styles to/from it.
- User Categories are analogous to playlists in a song player. You can create/edit them and choose to display only the styles from the category or all styles including the category styles that show with * asterisks.
- Prototype style support has been added. Select a style as a prototype, and the StylePicker will sort and filter by best to worst match of the prototype's tempo, feel, genre, time signature, and more.
- You can add a custom memo to a style by right clicking on the style name.
- Sorted display now says low to high or high to low.
- The Fav button has been replaced by the Action button.
- An instrument summary shows in the memo area.
- Styles with Loops or UserTracks are now displayed in the StylePicker with the name of the Loops or UserTracks.

Loops have been enhanced.

- Rests now work with Loops.
- Loops can be set to a timebase (normal, half-time, double-time, or triple-time).
- Loops can be combined with drums on the Drums track (Multi-Drums).

Tap tempo has been enhanced. Now, when you tap more than 4 times, the accuracy will improve (through averaging) and you can continue to tap until the target tempo has been reached.

Mixer has been enhanced with double click option to set the mixer values to defaults.

New track names are now listed instead of the old track names in some places.

An alert confirmation shows before transposing the Audio track when the user has transposed the song.

And more!

Chapter 3: Introduction to Band-in-a-Box 2017

Let's take a closer look at the great new features in Band-in-a-Box 2017!

Improved GUI for Main Screen

The previous version of Band-in-a-Box (2016) had a large toolbar that was not configurable. We have redesigned the main screen with many requested improvements, including a new smaller footprint, configurable toolbars, a tabbed interface, the progress bar and more. The toolbar area is now 1/3 of the previous vertical height. All of the same buttons are available through the tabbed interface. Select a toolbar on the tabs and then the button you want to use. Re-order the buttons by drag and drop. Customize your own toolbar by adding any buttons in any order. Use the floating, movable, resizable mixer.

There are three modes for the toolbar.



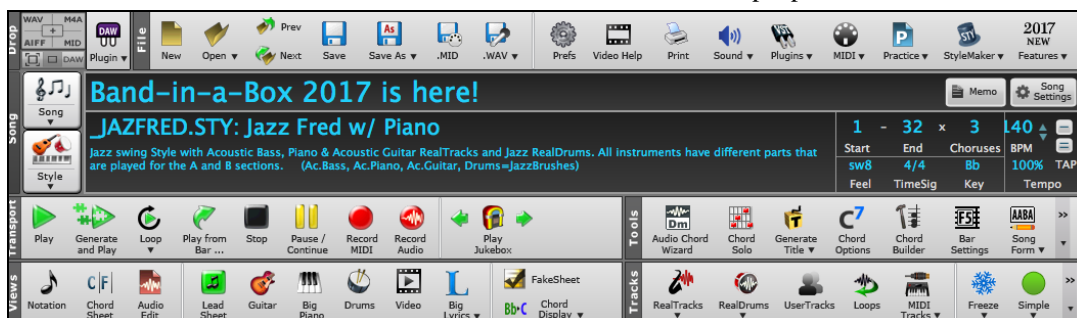
You can switch modes using the Mode Selector buttons at the top left of the screen.

The modes are:

1. New, smaller, configurable toolbar with tabbed interface.



2. Old, taller toolbar, with fixed on-screen Mixer. This is useful for people with hi-res screens.



3. DAW mode. This makes a small screen, always on top. This is useful for drag and drop of files to your favorite DAW.

The Progress Bar has been added.



This bar displays a timeline for the current song.

The current time is marked with a gray vertical line. You can click on the bar to move the current time to that point.

Part markers are marked with colored (blue, green, etc.) vertical lines.

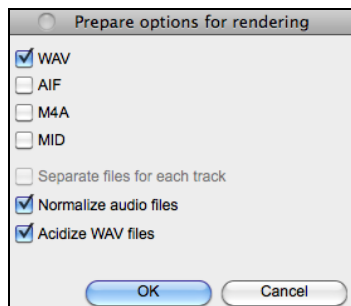
The beginning of each chorus is marked with outlines.

You can double click on the bar to start playback from that point.

The Drop Station now has an additional drop target, labeled + button, to allow a configurable rendering.



When you drop to the [+] button, you are presented with a dialog, where you can choose a file format and other render options (acidize, normalize, and separate tracks).



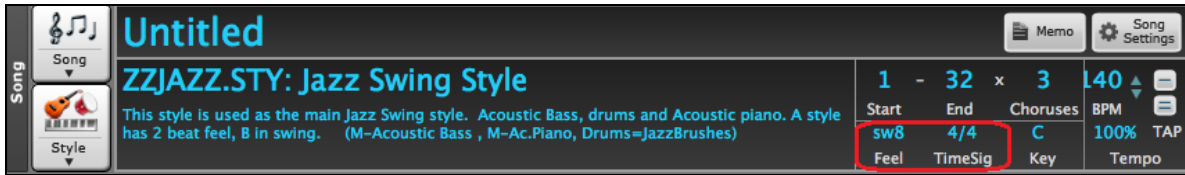
You can choose a format (WAV, M4A, AIFF, or MID) of the file.

When you have dragged the Master radio button, you can select the “Separate files for each track” option.

If “Normalize audio files” is selected, the file will be normalized. Normalizing boosts the volume to a maximum level without distortion. Most professional music tracks are normalized.

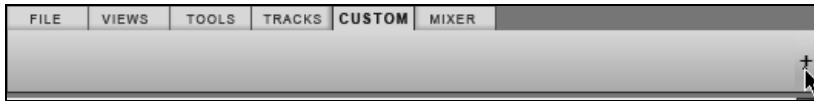
If you want to add ACID information (tempo, key, and time signature) to the WAV file, check the “Acidize WAV files” option.

The title area of the main screen has a new display for feel and time signature.



In the small toolbar mode, the CUSTOM tab lets you select and add buttons in the order that you want.

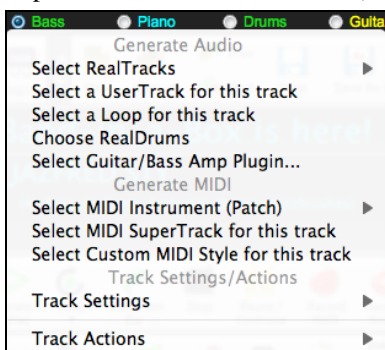
First, click on the [+] button on the right to open a palette of buttons.



Then, while holding down the Command key, drag buttons around to add, remove, or set the order.



The menu for the individual tracks, accessed from the track radio buttons or the Mixer, has been reorganized into groups allowing easier selection of track types: audio (RealTracks, UserTracks, Loops) or MIDI (MIDI SuperTracks, classic MIDI tracks), and track settings/actions.



sforzando SFZ Synth

In mid 2016, we added a new VST Synthesizer, and since then we added support for popular .SFZ sound format as well as PG Music's Hi-Q (High Quality) sounds. Many sounds that have been developed with the .SFZ format are available on the internet, and are ready to play with Band-in-a-Box using this synth. Your existing Band-in-a-Box Hi-Q sounds will play using this synthesizer, so previous songs or styles you made will play with this new synth. This synth is installed with Band-in-a-Box, and is ready to play and does not require configuration.

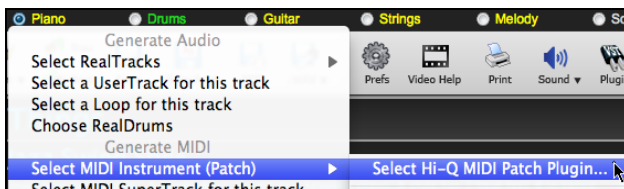
Most of the interaction between Band-in-a-Box and the sforzando synth will be behind-the-scenes, so you don't need to do anything. Just "pick a style and press play" as usual. This is because the styles that need to use the synth are coded to do so in the style, using the Hi-Q sound.

M_POPFLT.STY.
 Real and MIDI SuperTracks. Quintet. Tempo=120 (110-155)
 RD: NashvilleEven8^5-a:Snare, HiHat, b:Snare, Ride :Brian Fullen
 RT701: Bass, Electric, PopHalfNotesSync Ev 085 , Tobin Frank
 RT365: Guitar, Acoustic, Fingerpicking Ev 085 , Jason Roller
 RT362: Guitar, Acoustic, Strumming Ev 085 , Tony King
 MIDI ST2465: Synth, ElectroFlutes, Rhythm Pop Ev 085 , Miles Black
 Memo: MST Synth ElectroFlutes with Hi-Q patch. Other instruments include Electric Bass,

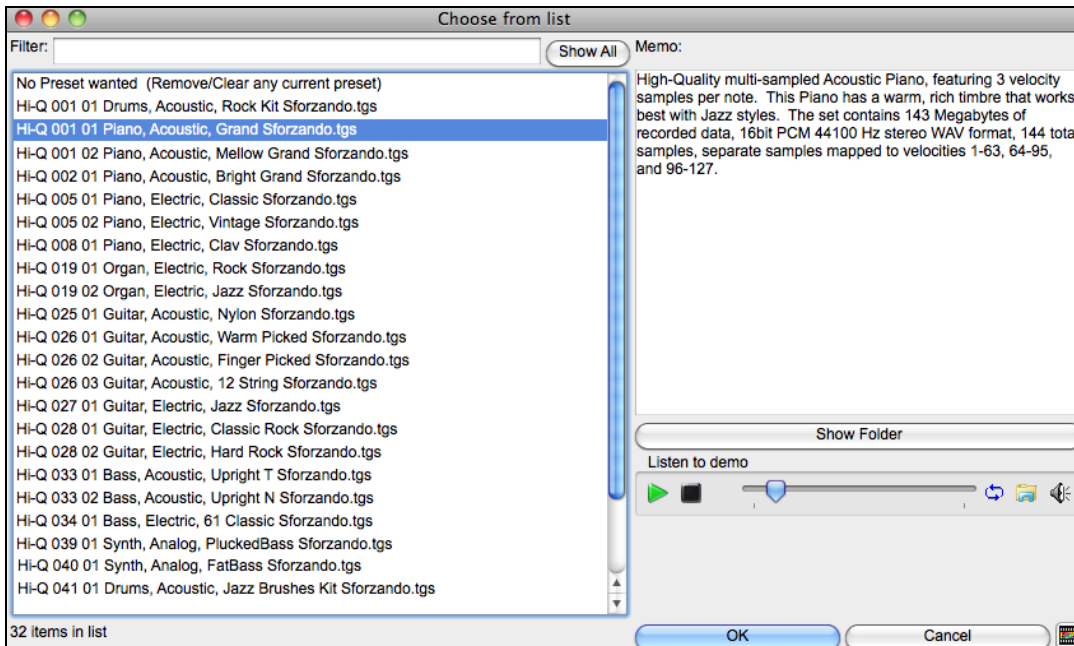
Strings [Plogue Art et Technologie, Inc: sforzando][None][None][None]
 2465:Synth, ElectroFlutes, Rhythm Pop Ev 085



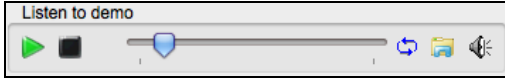
If you want to add a specific Hi-Q sound, right click on the track button and go to *Select MIDI Instrument (Patch) / Select Hi-Q MIDI Patch Plugin*.



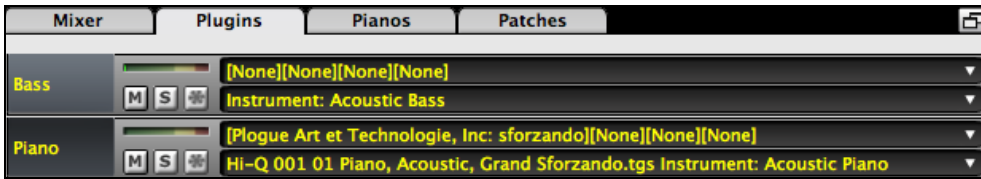
This will open a dialog with available Hi-Q sounds.



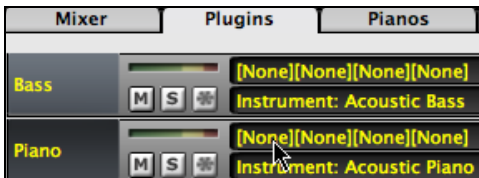
You can audition the Hi-Q sound by double clicking on the list or using the media player control.



When you make a selection and press [OK], sforzando will be loaded with the selected Hi-Q sound.

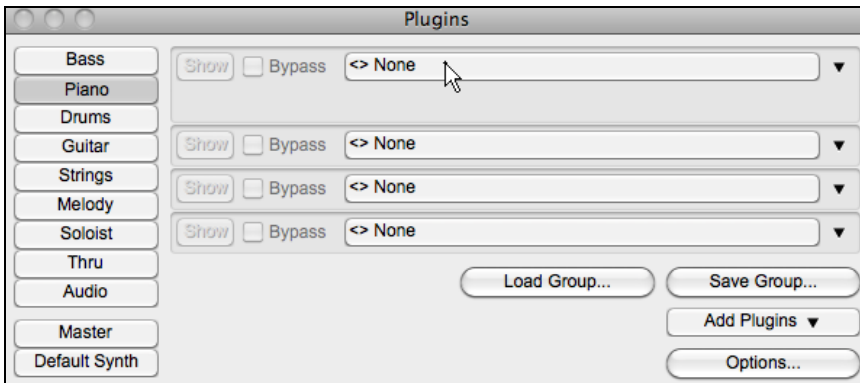


You can also use a custom sound such as an .SFZ sound that you have acquired. To do this, click on [None] in the Mixer's [Plugin] tab.

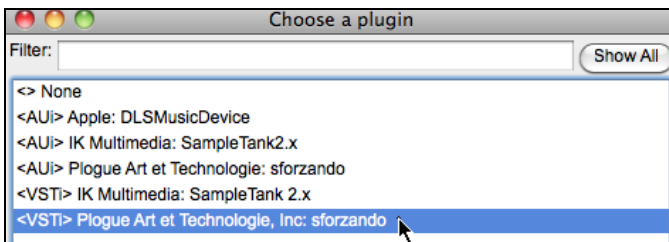


Note that you need to pick a MIDI track for this, not a "green" audio track.

When the **Plugins** dialog opens, click on the first slot.



This will open a dialog with available plugins. Select "<VSTi> Progue Art Technologie, Inc: sforzand" from the list.



Then, select a Hi-Q sound that you want to use for the selected MIDI track.

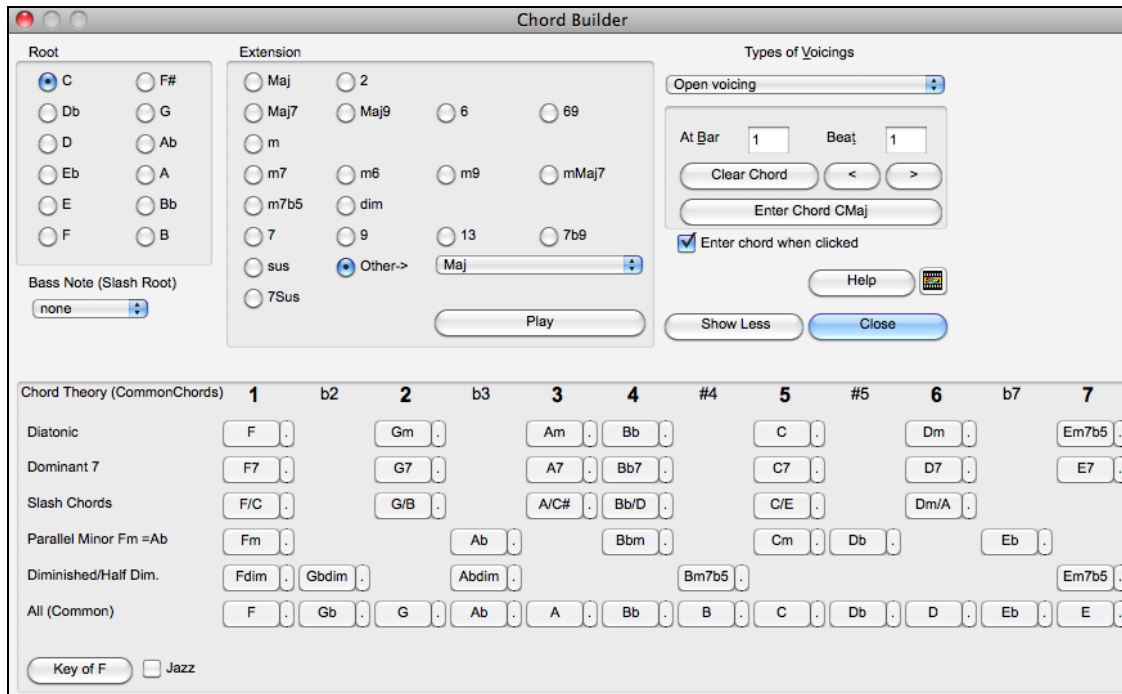


Chord Builder Enhanced with “Chord Theory” Section



Show More

Pressing the [Show More] button in the **Chord Builder** will open the Chord Theory section.



The Chord Theory section displays and suggests chords that are most popular in the current key. The top row is diatonic chords. Other rows add additional chords that are part of the key, such as Dominant 7th approach, Slash Chords, Parallel Minor, Diminished, and more. This allows you to quickly enter chords by clicking on the most common chords in the key. For example, if you stick to the top row (diatonic), the chord progression will be a typical song progression. Choosing from additional rows will add variation and color to the progression. This is a fun, interactive way to enter and explore chord progressions, and learn music chord theory at the same time.

For example, if you are in the key of F, the top row shows the most common chords in the key of F, which are the diatonic chords. You can just click on chords on this row to enter your chord progression using the most popular chords. Lower rows have additional chords in the key of F, like G7, A7, etc.

You can enable the “Jazz” checkbox to show jazz chords (e.g. sevenths like Maj7) instead of pop chords (e.g. triads like C).

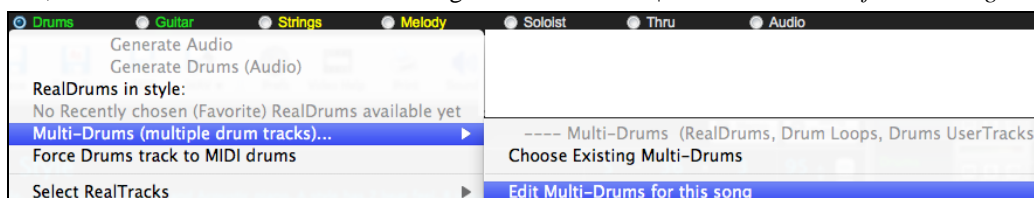
F	Gm	Am	Bb	C	Dm	Em7b5	(in pop mode)
FMaj7	Gm7	Am7	BbMaj7	C7	Dm7	Em7b5	(in jazz mode)

Drums Track Enhancements

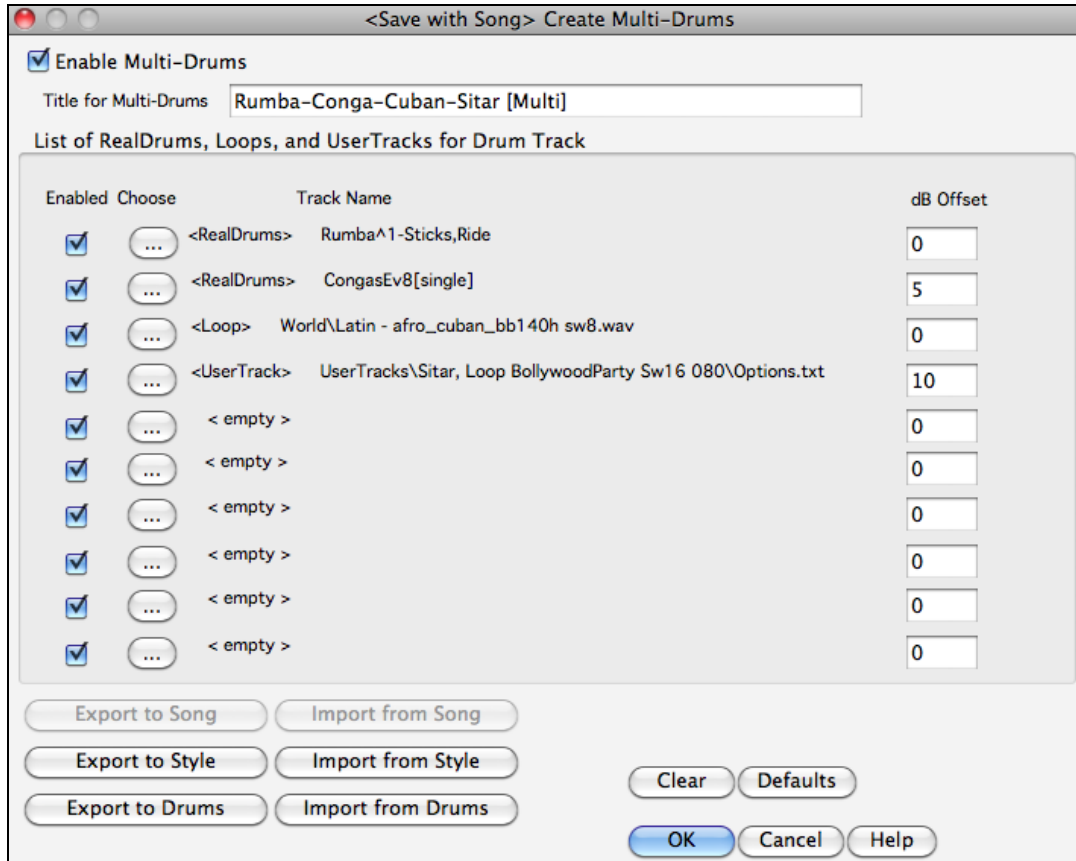
There are many RealDrums enhancements including selectable timebase (half/double/triple-time), Single Drums, Multiple Drums/Percussions/Loops, and more.

The Multi-Drums feature has been added.

This feature allows you to put multiple drum/percussion parts, drum loops, UserTracks drums, and even RealTracks on the same Drums track, with volume mixer adjusting levels. For example, you can add single drums instruments (e.g. Tambourine and Shaker), a bass drum loop, and/or UserTracks drums to BossaBrushes Drums track. To do this, click on the Drums track button and go to *Multi-Drums | Edit-Multi Drums for this song*.

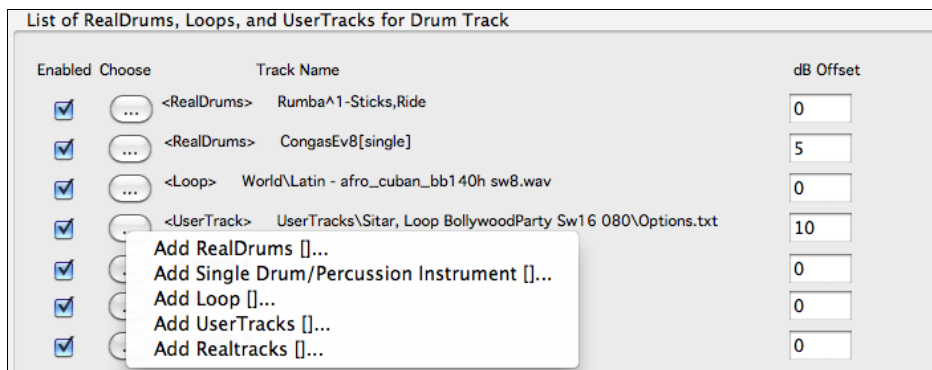


You will then see the **Create Multi-Drums** dialog.



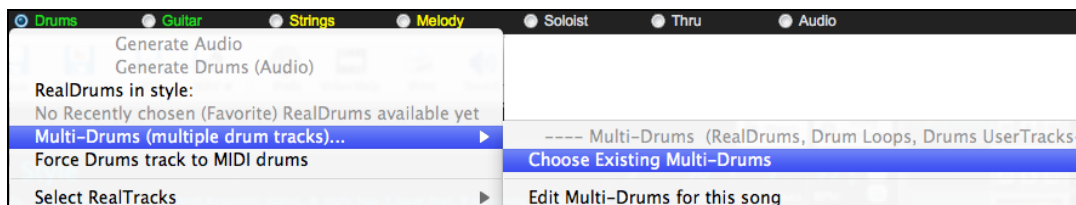
Enable Multi-Drums Make sure that you enable the “Enable Multiple Drums” checkbox.

To add drums, click on the [...] button on an unused slot. This will show you a menu where you can choose a second RealDrums, single drum/percussion (e.g. tambourine), loop, UserTracks, or RealTracks. You can adjust volume for each with the “dB Offset” option.

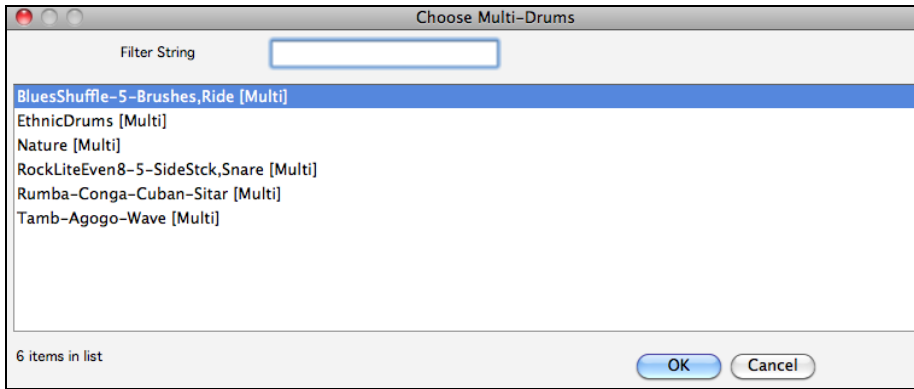


Title for Multi-Drums Type a title for the Multi-Drums and press the [OK] button.

If you want to use a Multi-Drums that you have already made, select the *Choose Existing Multi-Drums* menu option from the Drums track button menu.

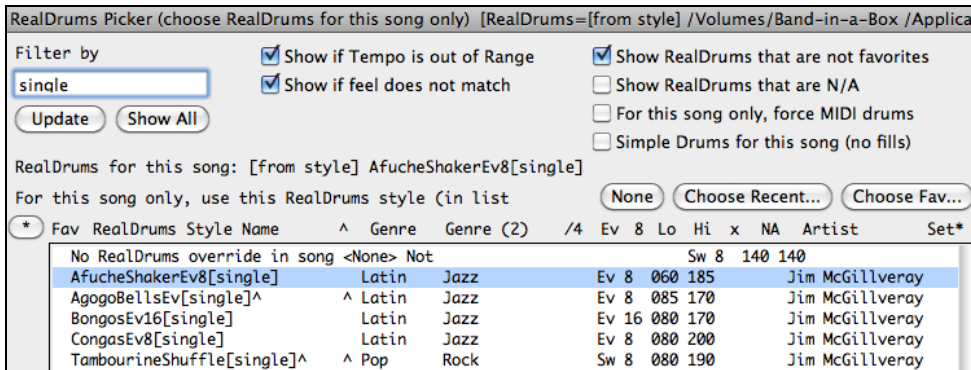


This will open a list of pre-made Multi-Drums. (Note: These drums are saved in the Drums folder, and all have names ending in [Multi].)

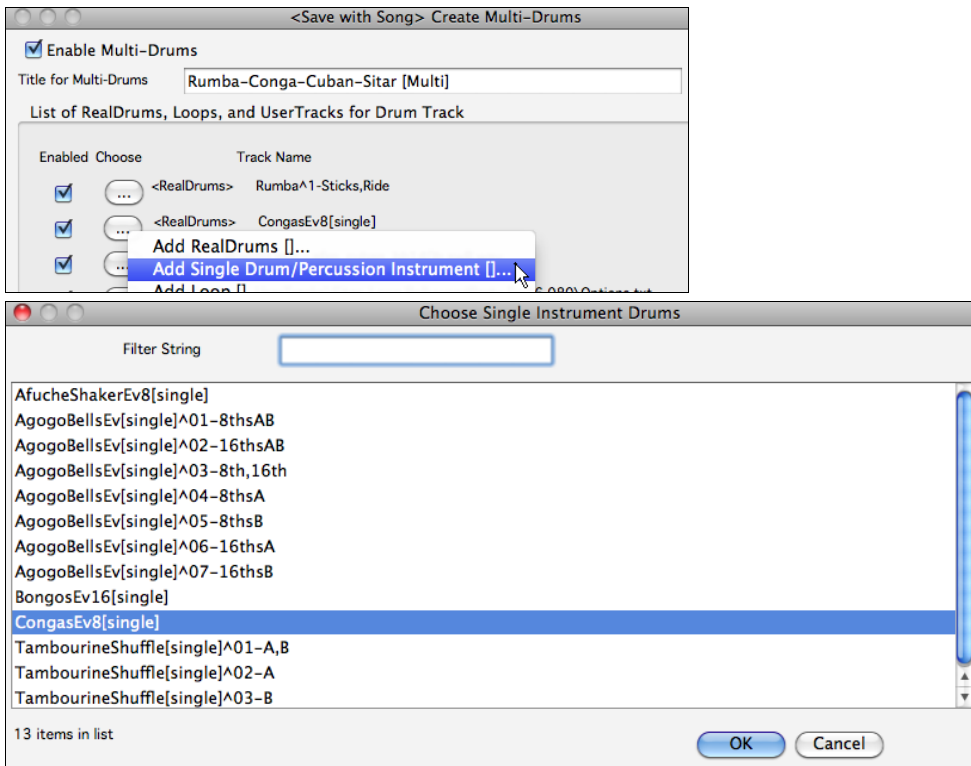


Single Drums have been added.

These are RealDrums that just have a single percussion instrument like tambourine, shaker, or bongos. In the **RealDrums Picker**, you can search for single drums by typing “single” in the text filter.



You can easily add the single drums to Multi-Drums in the **Create Multi-Drums** dialog.



Drums can have selectable timebase: double-time (cut-time), half-time, or triple-time.

For example, if you have:

- an even 16ths Folk drums track at tempo 90, then you can choose Half-Time, and it will play even 8 feel with a style at tempo 180.
- an even 8 feel style at tempo 180, then you can choose Double-Time, and it will play at tempo 90 (Cut-Time) even 16ths feel.
- a fast waltz style at tempo 150, then you can choose Triple-Time, and it will play with a slow 4/4 style at tempo 50, which gives a triplet 12/8 feel.

Timebase can be stored with song, style, or RealDrums.

There are some demo songs in the Applications/Band-in-a-Box/RealTracks – Demos/RealDrums Timebase Demos folder.



_IMPROV Demo - Improvised Half-Time Folk.SGU: This folk song, which is in C and focuses on simple triads, features RealDrums (Spoons) playing in half-time over a fast tempo. A strummed acoustic guitar and baby bass round out the ensemble and create the sound of a few musicians who picked up what they had lying around.

_MARCHON Demo - March On - Determined Country.SGU: This song combines slow guitars with energetic RealDrums playing in double-time. The RealDrums propel two rhythm electric guitars, a spaghetti western baritone guitar, an electric bass, and a gentle synth pad. It is in Gm at 65bpm and plays a combination of triads and 7ths.

_REGGAEB Demo - Modern Reggae in Half Time.SGU: This modern reggae/R&B song, which is in E minor and uses simple triads, features half-time RealTracks (two electric guitars playing different patterns and an electric bass) and RealDrums playing over a quick tempo.

_SAMBADT Demo - Samba Double Time.SGU: This upbeat Samba song, which plays 7th chords in C at 95 bpm, features several Latin instruments in double-time, playing over a much lower tempo than you'd expect. The instruments include an acoustic bass, RealDrums, an acoustic guitar playing an energetic lead, and a piano.

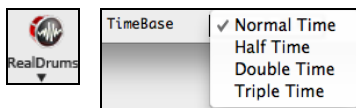
_WESTWLZ Demo - Country Waltz in Triple Time.SGU: This fast country waltz isn't actually fast; it's a slow 12/8 song! It sounds fast because it uses RealTracks and RealDrums that are playing waltzes and set to triple time. Instruments include two acoustic guitars, an acoustic bass, a fiddle in the background, and RealDrums. The song uses simple triads in E at 50 bpm.

To select a timebase for the current song,

- right click on the Drums track button, go to *Track Settings / Track Timebase*, and click a timebase.



- or use the “Timebase” option in the **RealDrums Picker**.



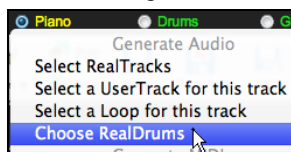
To select a timebase for styles, go to the **StyleMaker**, open the **Misc. Style Setting** dialog, and use the “Timebase” option.



If the RealDrums is named with the timebase appended, it will function in that timebase. For example, “BossaBrushes” is a normal Ev8 timebase, but “BossaBrushes [Double-Time]” would play this in a Cut-Time Ev16 feel.

RealDrums can be added to any track, not just the Drums track, so you can have more than one drums track.

To do this, right click on the track radio button and select *Choose RealDrums* from the menu.



For example, to add drums to the Piano track, click on the Piano track button and select the *Choose RealDrums* menu item. When the **RealDrums Picker** opens, select a RealDrums style and press the OK button. You will then have two Drums tracks.

When there are multiple drums tracks in a song, they will be automatically called Drums 1, Drums 2 etc.



RealDrums Shots/Pushes/Rests now work with style changes and frozen Drums track.

No action is needed for this to work. Just add period(s) to chords, and the Drums track will follow them.



The RealDrums Picker window now opens much faster despite having more entries.



Previously, it took up to 5 seconds for the window to open on slower machines. Now, it opens in less than a second.

Pitch Shifting and Tempo Stretching Enhancement

Tempo pitch shifting and tempo stretching has been greatly enhanced with the integration of the newest version of the world-leading Elastique (version 3, previously version 2). This allows higher quality, and sound retains timbre with extreme tempo changes or transpositions. You do not need to configure this, as this works automatically.

12-Key “Woodshedding” RealTracks

Many people use the RealTracks feature in Band-in-a-Box to learn how to “play like the pros.” This is because you can see notation, tab, on-screen guitar, and more, as you hear the music. Now we’ve taken this to a higher level by providing some “12-Key” RealTracks that have been recorded in all 12 keys. In previous versions, you might decide to learn to play by studying the parts played by the RealTracks artists, and watch the notation to do so. Many people have found this a great way to learn, but it had the following issues.

- Since RealTracks were based on only 5 keys, they were transposed much of the time, which would make the guitar part unplayable for a student in some cases.
- The tab/notation was good for guitar, but lacked some precision and graphical representation of bends, pull-offs, hammer-ons, and pull-offs.

So we have solved that by creating some Guitar RealTracks with:

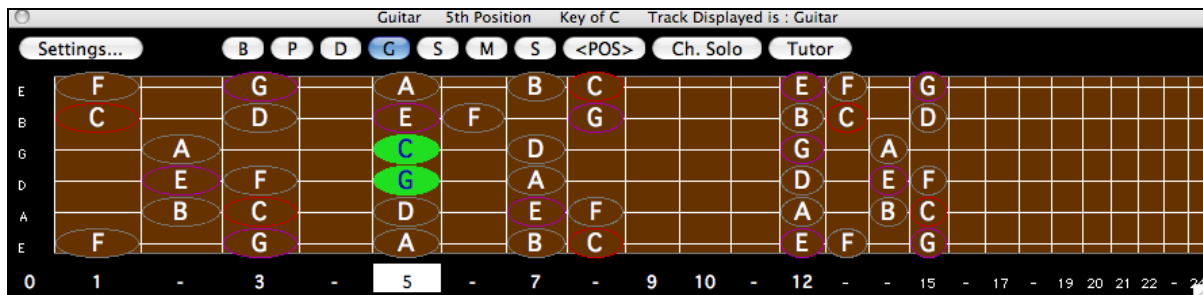
- recording in all 12 keys. So you can see what a pro would play over an Ab chord, and you won’t see them play on a G transposed up to an Ab,
- and carefully transcribed notation, with correct bend/hammer-ons, pull-offs, and slides.

So now, you (we!) students have no more excuses! You can watch and learn from the pros!

We’ve made some of these for country guitar (Brent Mason), piano (Mike Rojas), and pedal steel (Eddy Dunlap).

Name	GM	Type	Feel	Tempo	Genre	#	NA	Set*	St	Nt	Artist
Piano, Acoustic, Rhythm TrainBeatMike12-key Ev16 090	1	Rhythm	Ev	90	Country	2778	254	St	N		Mike Rojas
Pedal Steel, Background TrainBeatEddy12-key Ev16 090	28	Background	Ev	90	Country	2777	254	Mn	N		Eddy Dunlap
Guitar, Electric, Soloist CountryPopBrent12-key Ev 085	28	Soloist	Ev	85	Country,Pop	2829	254	Mn	Gt		Brent Mason
Guitar, Electric, Soloist TrainBeatBrent12-key Ev16 090	28	Soloist	Ev	90	Country	2828	254	Mn	Gt		Brent Mason

For guitar, this means that they are typically generated with no transpositions on any chord so that you can learn by copying exactly what you see on the fretboard. In combination with another new feature (Hi-Q RealCharts and guitar display), this gives you great notation and guitar display.



Hi-Q Guitar RealCharts

Hi-Q Guitar RealCharts are available with highly accurate and readable notation, including markings for bends, slides, hammer-ons, and pull-offs. We have some amazing new RealTracks from Brent Mason, in 12-Keys with Hi-Q notation showing exactly what is being played!

To see these in action, load in one of the 12-Key Hi-Q notation RealTracks by Brent Mason.

Name	GM	Type	Feel	Tempo	Genre	#	NA	Set*	St	Nt	Artist
Guitar, Electric, Soloist CountryPopBrent12-key Ev 085	28	Soloist	Ev	85	Country,Pop	2829	254	Mn	Gt	Brent	Mason
Guitar, Electric, Soloist TrainBeatBrent12-key Ev16 090	28	Soloist	Ev	90	Country	2828	254	Mn	Gt	Brent	Mason

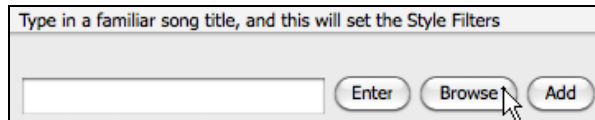
You can also enter your own guitar notation using these features. Just right click on a note to set its properties to include bends, slides, hammer-ons, and pull-offs.

Song Titles Browser

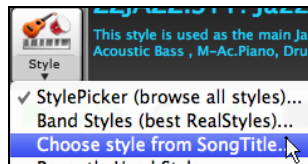
The popular Title feature, which allows you to type in the name of a familiar song and find a style with similar feel and tempo, has been enhanced with a dedicated **Song Titles Browser** window. This window allows you to browse and filter the huge list of over 8,000 popular song titles. You can, for example, filter the list by a certain artist, and then sort by tempo, key, feel, time signature, and more. Once you have found a song, pressing a button will take you to the StylePicker with the styles that best match the tempo, feel, and genre of the selected song title. For example, you can find all popular songs that are waltz in the Key of Eb, with a tempo slower than 100. This might be useful for making a medley or seeing a list of song titles that share the same key, tempo, and feel. We've also added over 500 new songs to the database, filling in some missing genres and new songs from 2016 as well as some classics.

There are two ways to launch the **Song Titles Browser** window.

If the **StylePicker** window is already open, you can press the **[Browse]** button at the top right of the window.



From the main screen, click on the **[Style]** button on the toolbar and select the *Choose style from Song Title* menu item.



Song Titles Browser: ABC

Show Songs with Title Memo :

Filter String Show All Add...

Title	Artist	Genre	Key	Tempo	Feel	TimeSig	Decade	Vocals
ABC	The Jackson 5	R&B	Ab	95	Ev16	4	1970s	MH
The ABC's of Love	Frankie Lymon & The Teenagers	R&B	F	190	Sw8	4	1950s	MH
About You Now	Sugababes	Modern Pop	E	165	Ev8	4	2000s	FH
Abacadabra	Steve Miller Band	Lite Pop	Am	125	Ev8	4	1980s	MH
Abraham, Martin, John	Marvin Gaye	Ballad	Bb	90	Ev16	4	1970s	MH
Acadian Driftwood	The Band	Lite Pop	F	75	Ev16	4	1970s	MH
Accidental Racist	Brad Paisley; LL Cool J	Country	G	70	Ev16	4	2010s	MH
According To You	Orianthi	Heavy Rock	F	130	Ev8	4	2000s	FH
Achy Breaky Heart	Billy Ray Cyrus	Country	A	120	Ev8	4	1990s	MH
Across the Black Water	Irish Trad	Celtic	F#m	110	Sw8	4	Trad	
Across The Universe	The Beatles	Lite Pop	Db	80	Ev16	4	1960s	MH
Act Naturally	Buck Owens	Country	G	90	Sw16	4	1960s	MH
Act Naturally	The Beatles	Lite Pop	G	130	Sw8	4	1960s	MH
Adam and Eve	Paul Anka	Lite Pop	Am	200	Ev8	4	1960s	MH
The Addams Family Theme	Vic Mizzy	Lite Pop	Bb	125	Sw8	4	1960s	MH

8089 items in list Sorted by: Title,Cover,Artist,Genre

Title=ABC
Artist(s)=The Jackson 5
Genre=R&B
KeyWord=R&B movin
TimeSig=4 =4/4, Key=Ab ,Ev 16,tempo=95,year=1970

Browse for more info...

Info (Google) YouTube Spotify Spotify (All)

Save List Refresh Defaults

OK - Find Matching Styles Close Cancel Help

There are Title/Artist/Genre/Key/Tempo/Feel/TimeSig/Decade/Vocals columns. You can sort the list by any column.

Title	Artist	Genre	Key	Tempo	Feel	TimeSig	Decade	Vocals
-------	--------	-------	-----	-------	------	---------	--------	--------

- Title: This shows you the song title.
- Artist: These are the artist or artists most commonly associated with the song.
- Genre: This is the musical genre that the song it typical played in.
- Key: This is the song key that is usually associated with the song.
- Tempo: This is a typical tempo for the song.
- Feel: This shows you if the song is Even or Swing, and 8th or 16th cut-time.
- Decade: This tells you the decade that the song is from.
- Vocals: Typical vocals are shown: (M)ale/(F)emale, (H)igh/(L)ow voice.

You can type a text filter, and the list will be restricted to the songs that contain that keyword.

Show Songs with Title Memo :

Filter String Show All Add..

Title	Artist	Genre	Key	Tempo	Feel
The ABC's of Love	Frankie Lymon & The Teenagers	R&B	F	190	Sw8
Addicted To Love	Robert Palmer	Medium Rock	A	110	Ev8
After the Love Has Gone	Earth, Wind & Fire	Ballad	F	60	Ev1
Ain't Gone 'N' Give up on Love	Stevie Ray Vaughan and Double Trouble	Blues	Ab	50	Sw8
Ain't No Love In The Heart Of The City	Bobby "Blue" Bland	R&B	Am	80	Ev1
Ain't No Love (Ain't No Use)	Sub Sub; Melanie Williams	Funk	Bbm	130	Ev8
Ain't Talkin' 'bout Love	Van Halen	Heavy Rock	Abm	140	Ev8
Ain't That Love	Ray Charles	R&B	Bb	120	Sw8
All for Love	Bryan Adams, Rod Steward & Sting	Ballad	D	75	Ev1
All In Love Is Fair	Stevie Wonder	Ballad	C#m	65	Ev1
All I Wanna Do Is Make Love to You	Heart	Medium Rock	G	105	Ev8
All My Love	Led Zeppelin	Medium Rock	Am	90	Ev1
All Out of Love	Air Supply	Ballad	C	55	Ev1
All the Love	The Outfield	Medium Rock	E	125	Ev8

Title=Goin' Home
 Artist(s)=Fats Domino
 Genre=Blues
 KeyWord=Saxophone solo
 TimeSig=4 =4/4, Key=Eb ,Sw 8 ,tempo=95,year=1950

This area shows a summary of the selected song title.

Browse for more info...

Info (Google) YouTube Spotify Spotify (All)

These buttons will launch the internet browser and let you browse for more info for the selected song or listen to the song.

Add.. If the list does not contain a song that you are looking for, press the **[Add]** button. This will launch the internet browser and open the PG Music Forum page where users discuss the song titles database. You can post a request to add the song to the database.

OK - Find Matching Styles Once you have found a song, press the **[OK - Find Matching Styles]** button. This will take you to the **StylePicker** window with styles that best match the tempo, feel, and genre of the selected song title.

Style Filter by:

Filter String Include Similar

Blues 4/4 Sw8 95 Type Other

Clear Refresh

		TSig	EvSw	Tempo	Long Name	Genre	Group	Date	Set#	...
_RCKBLSS	R	4/4	sw8	85	Rockabilly Blues	Country	Country	2014-12	RT 222	4
_FEDORA	R	4/4	sw8	85	Fedora Slow Organ n Piano Blues	Blues	Pop	2016-11	RT 267	4
_LAWLESS	R	4/4	sw8	110	Lawless Country Boogie Swing	Country	Country	2016-07	Xtra PAK	6
_TBLZSEV	R	12/8	sw8	85	Slow 12/8 Blues w/ Vintage Piano	Blues	Pop	2014-10	RT 211	5
_UVRAYS	R	4/4	sw8	110	UV Rays Cali Pop with Tambourine	Blues	Pop	2016-11	RT 276	5
_HBSS110	R	4/4	sw8	110	Slow Country Boogie w/ Simple Held Bass	Country	Country	2015-11	RT 234	5
_RCKBLSL	R	4/4	sw8	85	Rockabilly Wasteland	Country	Country	2014-12	RT 222	4
_CBOOGIM	R	4/4	sw8	110	Medium Country Boogie w/ Piano	Country	Country	2012-07	RT 167	5
_B3THREE	R	4/4	sw8	85	Jazz Swing B3 w Bass and Drums	Blues	Pop	2016-11	Bonus	3
_128P50S	R	12/8	sw8	85	50's 12/8 Pop	Lite Pop	Pop	2015-11	RT 228	5
_MONDAY	R	12/8	sw8	65	Slow Swing 8ths Blues	Blues	Pop	2009-02	RT 30	4
_AcBlz2	R	12/8	sw8	65	Slow Blues	Blues	Pop	2008-12	RT 30	4

VST Sync Enhancement

In mid 2016, we added much requested support for VSTs that require tempo information to sync to. This has been enhanced with support for time signature and tempo changes. Many VSTs like Addictive Drums or Rapid Composer need this tempo information to sync to Band-in-a-Box. There is nothing for you to do to enable this feature. Just choose the VST that you want to use.

RealTracks Enhancements

The Tempo Swap feature for RealTracks has been enhanced, and it happens more intelligently now.

Since the tempo stretching has been improved, we have also widened the tempo range before a tempo swap to a new RealTracks would occur.

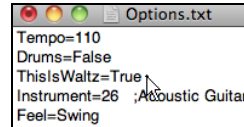
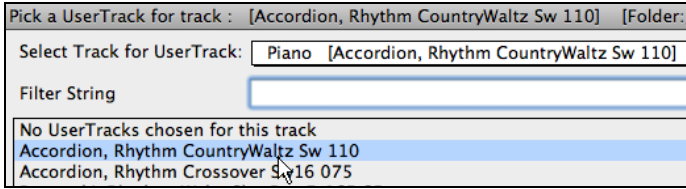
In addition, new features discussed elsewhere have improved the sound of RealTracks.

- Improved sound when stretching tempos or transposing using Elastique 3.
- Natural Arrangement option. See the [description elsewhere](#).
- 202 new RealTracks with version 2017!

UserTracks Enhancements

UserTracks now support 3/4 waltz time signature.

Just make a UserTracks as normal and save the Band-in-a-Box song with your UserTracks in 3/4 waltz time signature (i.e. save using a waltz style). Make sure that the options.txt file in the folder says "ThisIsWaltz=true."

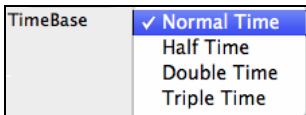


Rests now work with UserTracks. Shots and Holds also rest instead of continuing to play.

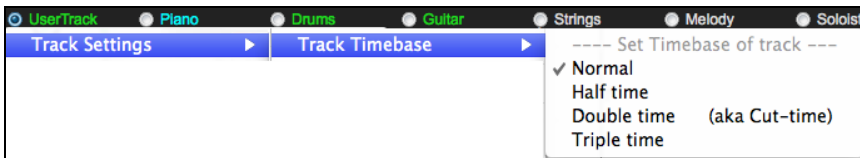
There are no changes to the UserTracks needed. Just add period(s) to chords, and the existing UserTracks will follow them. (Note: There is no specific support for shots or holds by UserTracks. They will just rest when these are encountered.)



Timebase (normal, half-time, double-time, or triple-time) can be selected for any UserTracks.

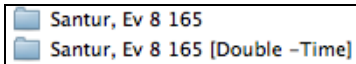


To do this, use the “Timebase” option in the **Pick a UserTrack** dialog, or click on the track button on the main screen and select *Track Settings / Track Timebase* from the menu.



UserTracks can be made and preset to a timebase by the user.

For example, if you have a UserTracks in Ev 8 called “Santur,” you can clone the folder and rename the cloned one as “Santur [Double-Time].” Then it will play in Double-Time Ev 16 half of the tempo.

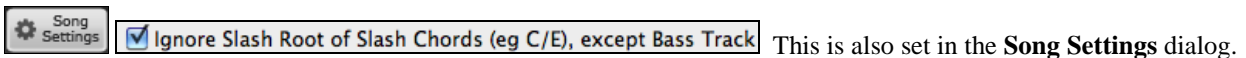


Option for no-transpose is now supported for UserTracks on any track.



This is set in the **Song Settings** dialog.

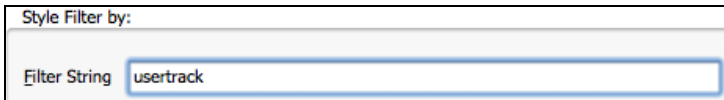
Option for ignoring slash notes like the “B” on a G/B chord (just play a “G” chord) is now supported for any UserTrack.



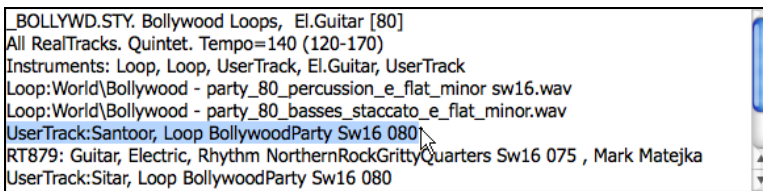
This is also set in the **Song Settings** dialog.

Styles with UserTracks are now displayed in the StylePicker with the name of the UserTracks.

You can search for styles with UserTracks by typing “usertrack” in the text filter.



You will then see the name of the UserTracks in the memo area.



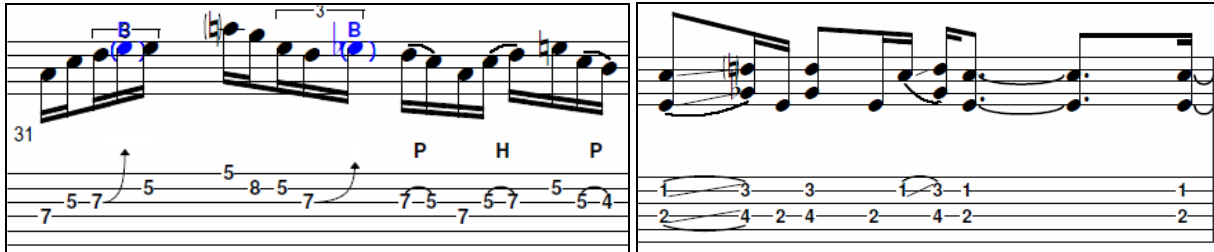
Note: You would need to do a one-time slow rebuild to update the StylePicker to show this. If you are still missing some styles IDs as UserTracks, try quitting the program and erasing Applications/Band-in-a-Box/data/User_stylz1.bin and then booting Band-in-a-Box to do a slow rebuild.

Notation Enhancements

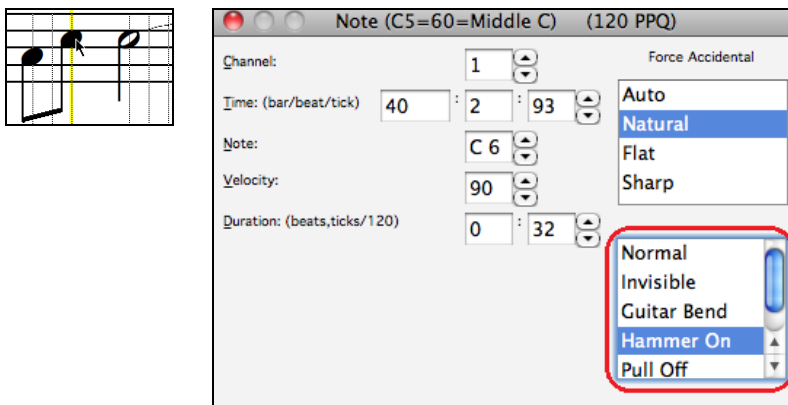
The Guitar Tab and Notation display has been enhanced.

You can now enter and display bends, slides, hammer-ons, and pull-offs with notation graphics indicating these elements.

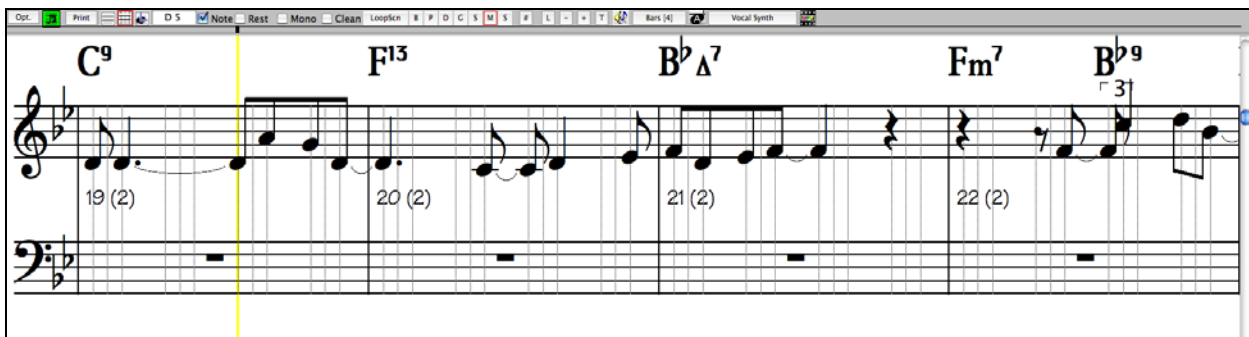
You can import these from Music XML files.



To enter any of these elements, right click on a note in the Editable Notation window. Then, select an element from the dropdown menu in the **Note** dialog.



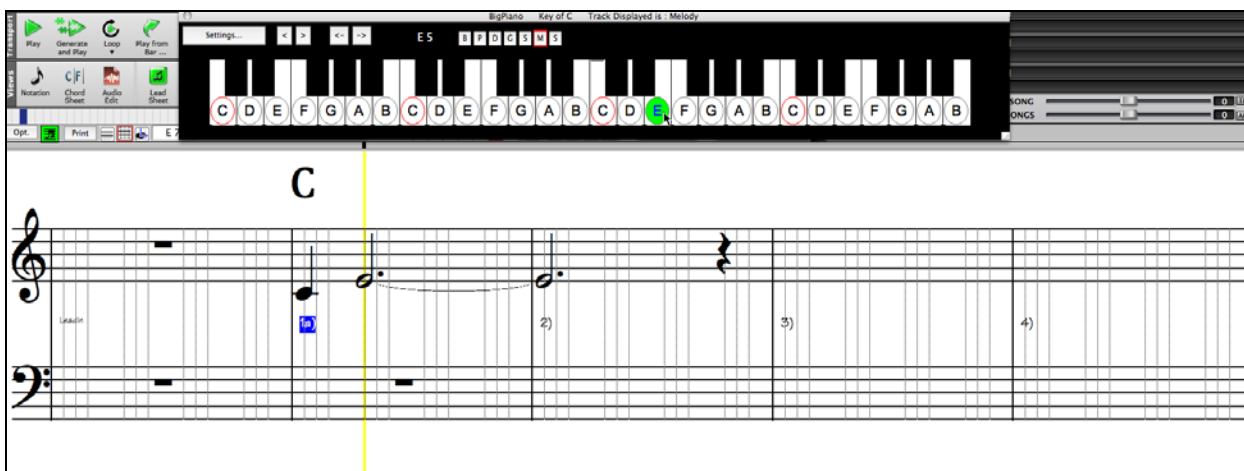
The notation timeline is much more visible while editing, as it is a yellow wide transparent vertical line on the notation.



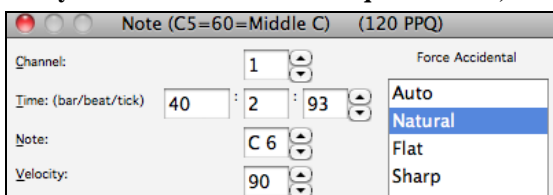
The right/left cursor keys move the timeline by an 8th if the current song's beat resolution is straight. They move by a peg if the beat resolution is swing since a peg is an 8th note triplet. If a beat has micro-pegs, then cursor keys move by 1 peg.

A rapid notation entry mode has been added for piano and guitar music.

To do this, open the Piano or Guitar window, use the new feature to have the right/left cursor keys set to the current notation position, and then click on the piano or guitar to enter notes. This is much faster than previous methods in many cases.

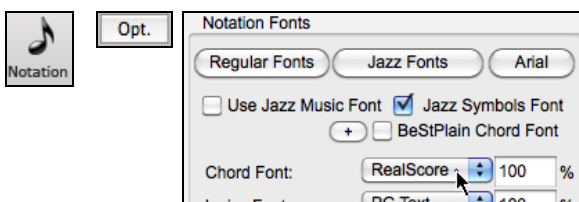


Entry of Forced Accidentals is quicker now, without a pull-down list required.



You can select an option from the list box that is always visible in the **Note** dialog.

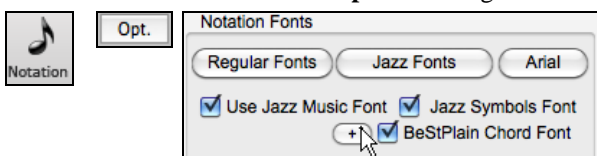
RealScore Chords font is now selectable on the Notation window fonts menu.



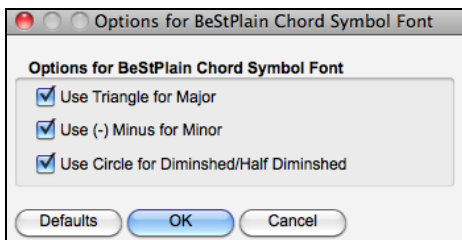
BeStPlain chord font can now be used for the Notation window.

In 2016, we added the BeStPlain chord font, which uses a triangle for major, a minus sign for minor, and a half or full circle for half or full diminished chords. Now you use this font for the Notation window.

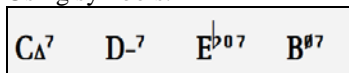
Go to the **Notation Windows Options** dialog and enable the “BeStPlain Chord Font” checkbox.



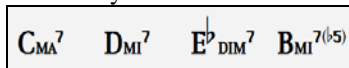
The [+] button beside this checkbox will open the dialog with options, which control display of symbols for the major, minor, half-diminished, or diminished chords.



Using symbols:



Without symbols:



Music XML (notation export/import) has been enhanced.

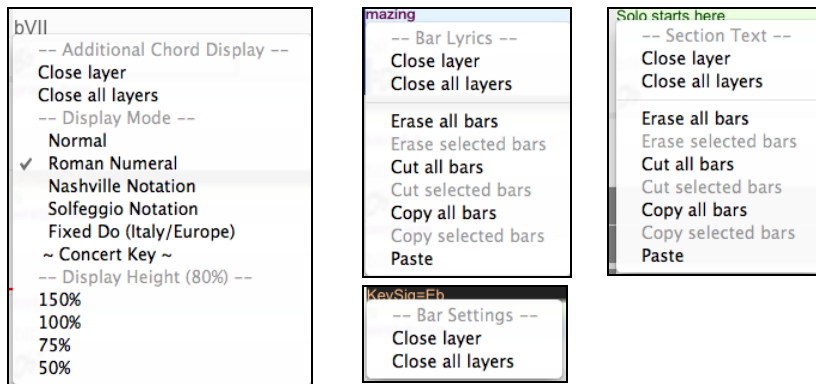
We’ve worked with Finale, GuitarPro, and Sibelius to enhance features and compatibility with Music XML. For example, Band-in-a-Box can now read/write more chord types to/from XML files, and import guitar tab, bends, hammer-ons, pull-offs, and slides from XML files.

Summary of XML Enhancements:

- Guitar tab, bends, hammer-ons, and pull-offs can be imported.
- When exporting chords to XML, the chord format written to the XML is now more compatible with other major notation software.
- Exporting of more complicated chord types has been improved.
- When importing XML, beats containing triplets will automatically be individually set to triplet resolution when appropriate. If the song contains more than 20 % triplets, the overall resolution in notation window will also be set to triplet resolution.
- Exporting of 8th note triplets to XML has been improved. The 8th note triplets that involve a rest are now being exported to XML.
- When importing XML, double sharps/flats in XML will now be converted to a compatible single flat or sharp accidental so that the correct pitch is imported into Band-in-a-Box.

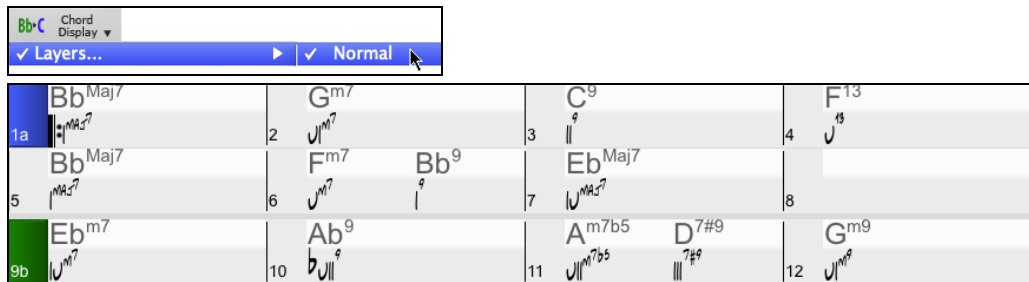
Chord Sheet and Layers Enhancements

Right clicking in a layer now has a menu with options to change height of the layer, close layer(s), copy/cut/paste, etc.

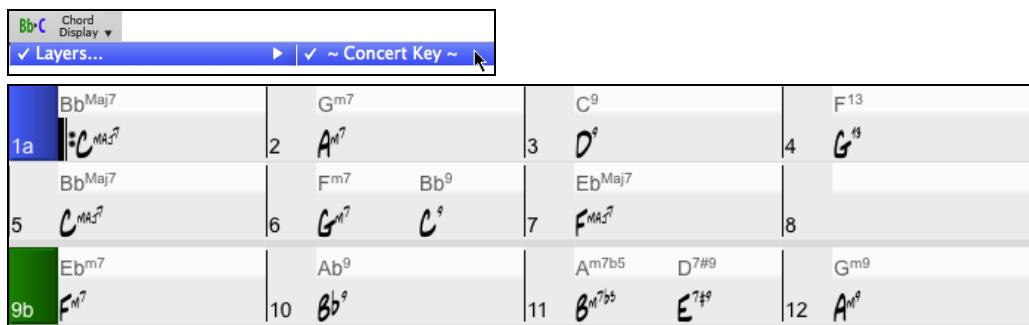


Normal chord display can be shown on the additional chord display layer.

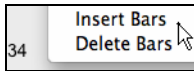
Previously you could not select Normal for the additional chord display layer. Now you can, for example, see the Roman Numeral on the main, and the Normal chord above it.



The “Concert Key” option has been added to display an additional chord display of the same chords transposed to a different key. So, for example, you can see two layers, one with concert chords and the other for Bb instruments.



“Insert Bars” and “Delete Bars” have been added to the right click menu.



These commands will let you insert or delete a specific number of bars at the current bar.

Chords preview works faster with shift+return keys.

Enter a chord in the Chord Sheet and hit the **shift+return** keys quickly to preview the chords.

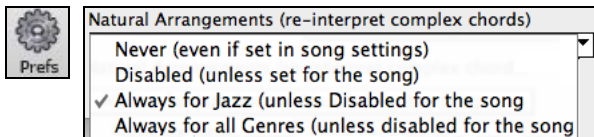


Natural Arrangements Option

If you give a pro musician a complicated chord progression with fancy extensions like C7b9b13 or Gm11, the musician may reinterpret these rather than playing them exactly as written. This can achieve a much better sounding arrangement because the musician has freedom to choose from similar chord extensions. Now you can get Band-in-a-Box to do the same thing.

You can set this on a global basis (all songs, all tracks), song basis (current song, all tracks), or individual tracks (current song, specific track(s)).

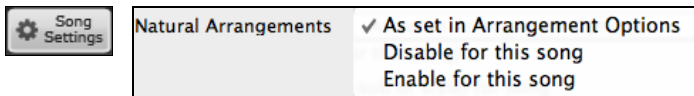
To set this for all tracks in all songs, use the option in the **Preferences** dialog.



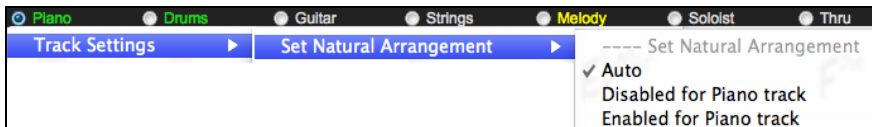
You can set the Natural Arrangements to:

- Never (even if set in song settings)
- Disabled (unless set in song settings)
- Always for Jazz (unless disabled in song settings)
- Always for All Genres (unless disabled in song settings)

To set this for the all tracks in the current song, use the option in the **Song Settings** dialog.

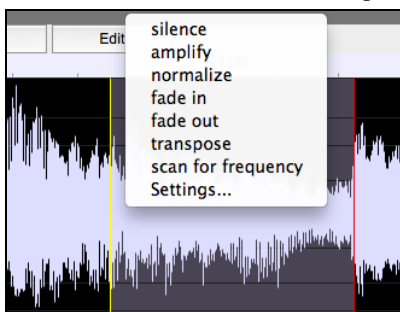


To set this for specific track(s) in the current song, right click on the track radio button, go to *Track Settings / Set Natural Arrangement*, and select an option.

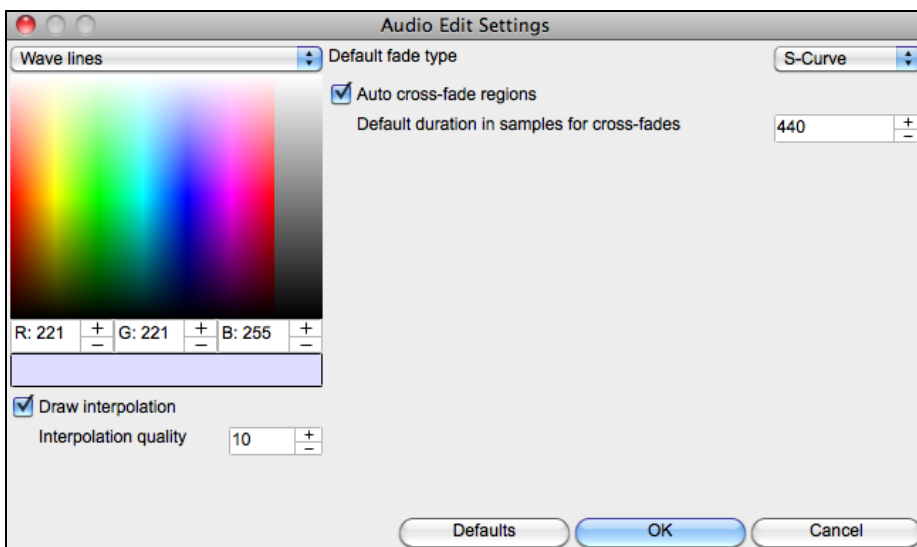


Audio Edit Window Enhancement

There is a new dedicated **[Edit]** menu that gives you access to new audio editing features - silence, amplify, normalize, fade in, fade out, transpose, and scan for frequency.

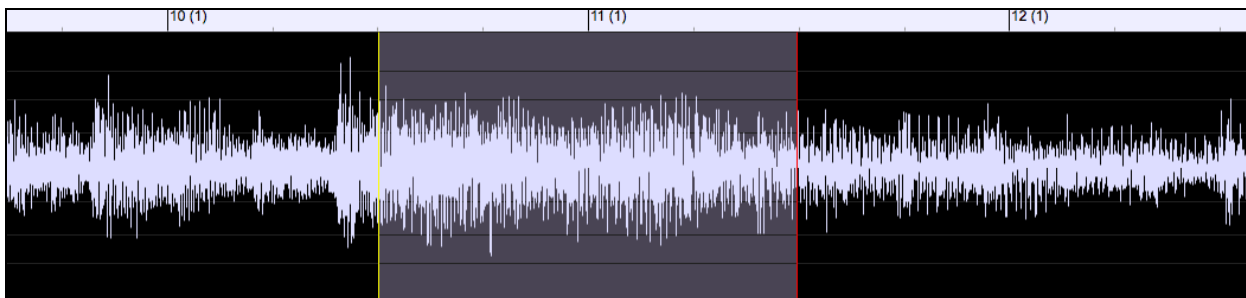


From the **[Edit]** menu, you can also open the settings dialog, which allows you to customize the appearance of the **Audio Edit Window** by choosing colors.



You can change the quality setting of interpolation, or turn it off completely (quality vs. drawing speed). There is also an automatic feature to “auto cross-fade regions.” When a region of audio is being modified or replaced, the beginning and ending of the region will be cross-faded with the existing audio to make a smooth transition. This applies to Cut, Paste, Silence, Amplify, and Normalize.

We have also added some handy features for stretching regions of audio. To use this feature, select a region of audio, then click & drag while holding the Command key.

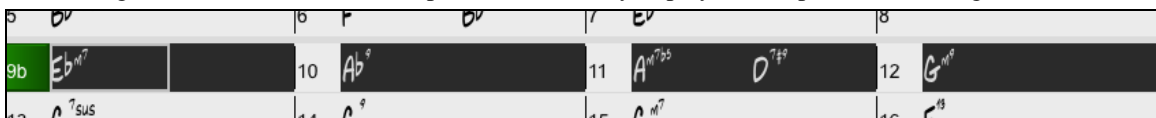


- Clicking within the region and dragging to somewhere else within the region will stretch both halves of the region (one will become longer, and the other will become shorter).
- Clicking outside the region and dragging to somewhere in the region will shorten the region.
- Clicking within the region and dragging to somewhere outside the region will lengthen the region.

These features can be useful for quantizing beats, or correcting mistakes in a recording.

Hot Key to Loop the Highlighted Region

Select a region on the Chord Sheet and press the [F10] key to play and loop the selected region.



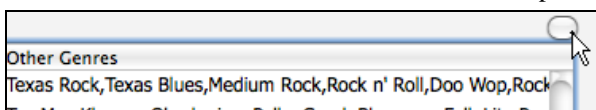
StylePicker Enhancements

Shortcut keys have been added to quickly launch the StylePicker window.

Just hit the **S+return** keys to open the window.

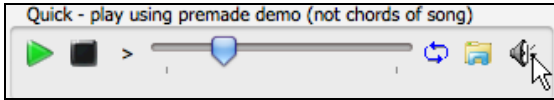
A scroll button has been added.

You can click this button to scroll the list to the top. This is a quicker way to go to the top than using the scroll bar.



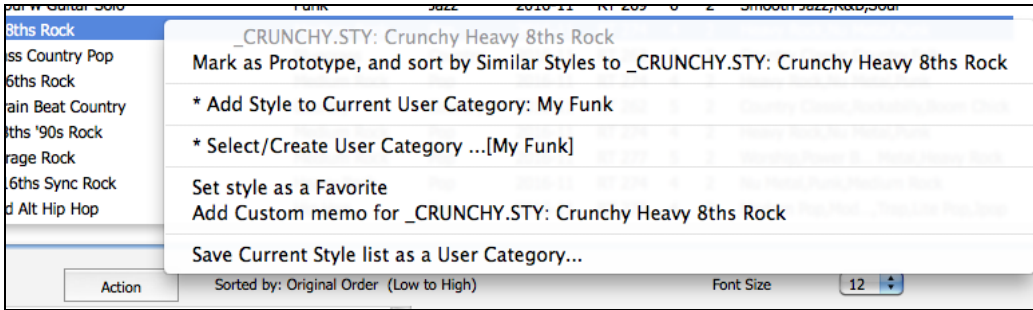
There is now a volume control for audio demo.

If the demo is too loud or soft relative to your other music, you can independently control this.



The Action button to perform new functions has been added.

You can also right click on a style in the list to access the new functions.

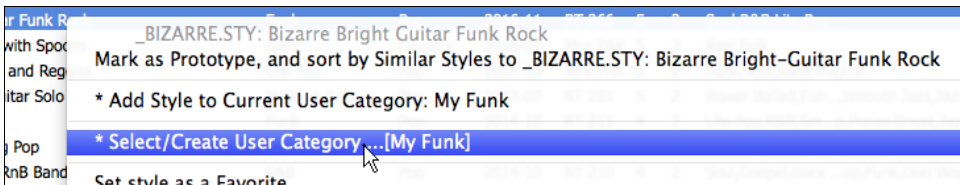


User Categories have been added.

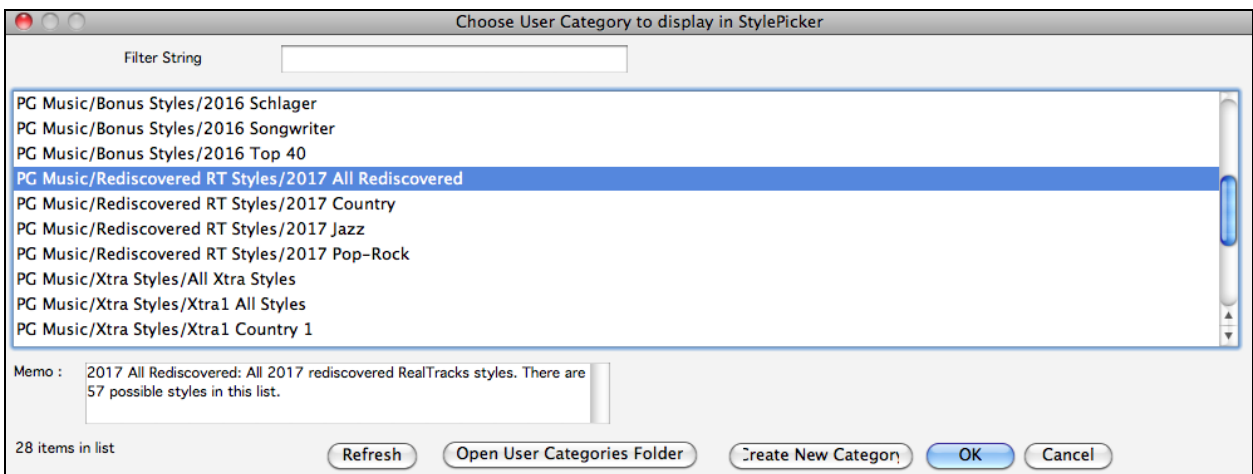
Unlimited User Categories can be created by users or third parties, to list their styles in the StylePicker by choosing their category.

[Selecting User Category]

You can select an existing User Category by choosing *Select/Create User Category*.

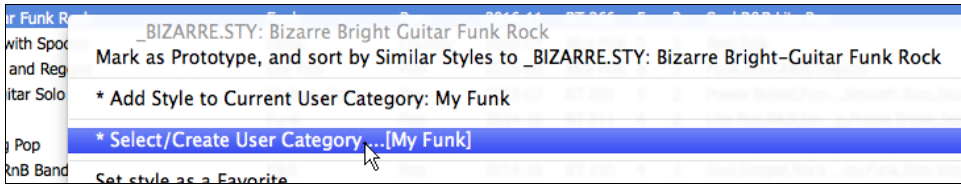


When the **Choose User Category to display in StylePicker** dialog opens, select a category and press the **[OK]** button.



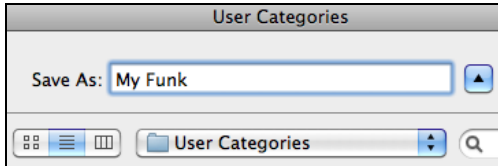
[Creating User Category]

You can make your own User Category. Right click on the list in the StylePicker, choose *Select/Create User Category*.

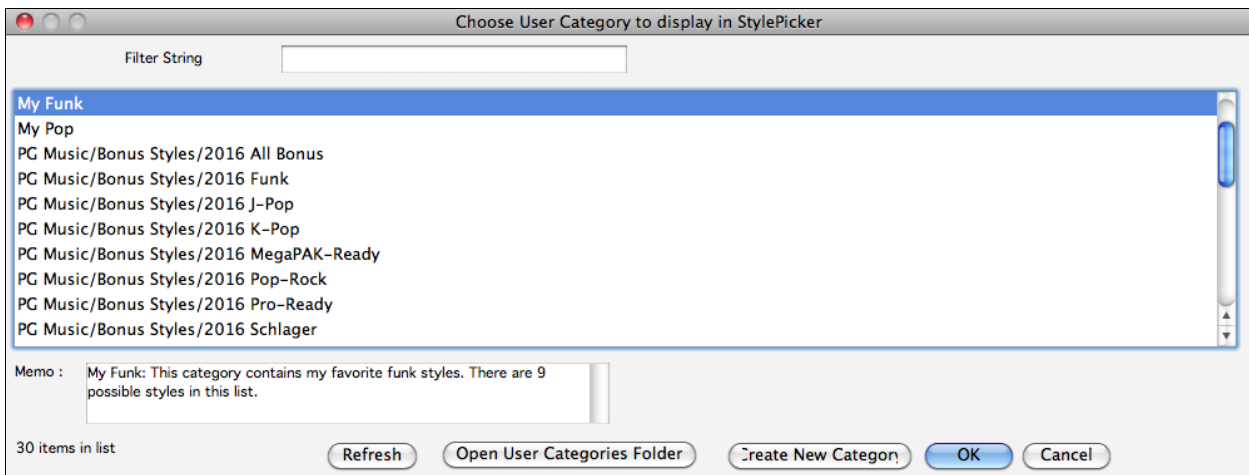
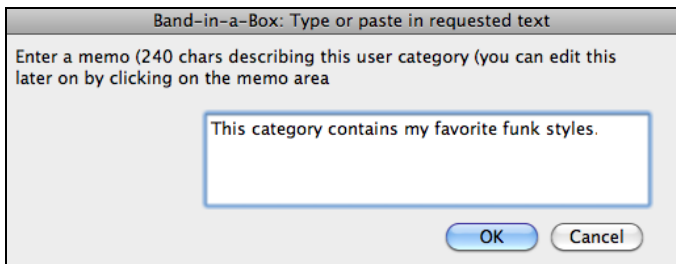


When the **Choose User Category to display in StylePicker** dialog opens, press the **[Create New Category]** button.

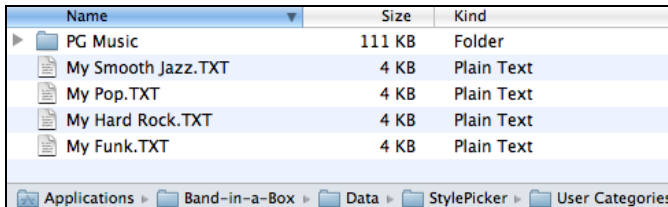
Type a name for your category and click on the **[Save]** button.



You can then add a memo to your category.



Technical note: User Categories are stored as .txt files, which just contain the list of style names. The User Categories must reside in Applications/Band-in-a-Box/Data/StylePicker/User Categories folder. You can re-arrange this folder by creating subfolders and moving the categories around to organize them. You can also directly edit the .txt file in this folder.

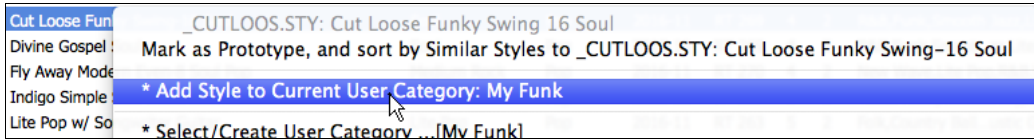


Refresh If you have made any changes to this folder, remember to press the **[Refresh]** button.

User Categories are analogous to playlists in a song player. You can create/edit them and choose to display only the styles from the category or all styles including the category styles that show with * asterisks.

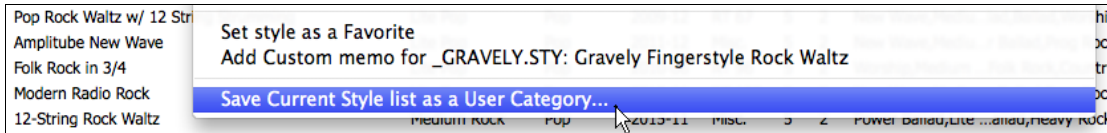
[Adding the current style to the current User Category]

To add the current style to the current User Category, right click on it and select *Add Style to Current User Category*.



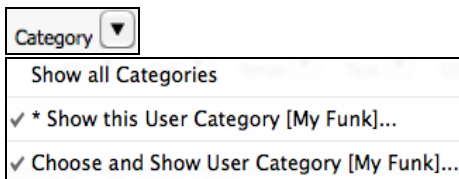
[Adding styles to a User Category]

The *Save Current Style list as a User Category* menu item allows you to create a new User Category and add all the styles currently displaying to the category.



[Showing styles from User Category]

To display only the styles from the current User Category, click on the **[Category]** button above the list and select *Show this User Category*. If you want to see only the styles from other User Category, select *Choose and Show User Category* and choose a User Category from the list.

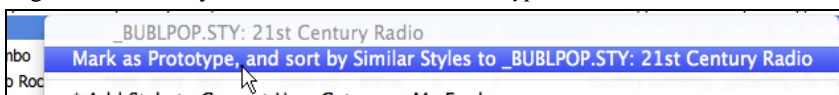


You will then see styles from the selected User Category.

	TSig	EvSw	Tempo	Long Name	Genre	Group	Date	Set#	#Instr	#substyles
* _ELTANGO	R	4/4	sw16	100	Electronic Tango Jazz Funk	Funk	Pop	2016-07	Xtra PAK 5	2
* _FUNKPOP	R	4/4	ev16	125	Funk Pop w/ Keys	Funk	Pop	2015-11	Misc.	6 2
* _FUNKS16	R	4/4	sw16	85	Swing 16ths Funk w/ Electric Piano	Funk	Pop	2015-11	RT 241	4 2
* _FUNKWAH	R	4/4	ev16	100	Funk w/ Wah-Wah Guitars	Funk	Pop	2015-11	RT 240	5 2
* _NEOSOUL	R	4/4	ev16	110	Neo Soul with Funky Guitar	Funk	Pop	2016-07	Xtra PAK 7	2
* _SLOFUNK	R	4/4	sw16	85	Slow Sw16 Pop Funk Groove	Funk	Pop	2016-07	Xtra PAK 6	2

Prototype style support has been added.

Right click on a style and select *Mark as Prototype* from the menu.



The StylePicker will then sort and filter the list by best to worst match of the prototype's tempo, feel, genre, time signature, and more. Once you do this, the sort status indicator will tell you that the sort is by prototype.



For example, if you choose *_BUBLPOP* as the prototype style, the list will be sorted with styles most similar to *_BUBLPOP*. These are the styles with a similar genre, feel, tempo, and time signature. Here is an example of the results of setting *_BUBLPOP* as the prototype.

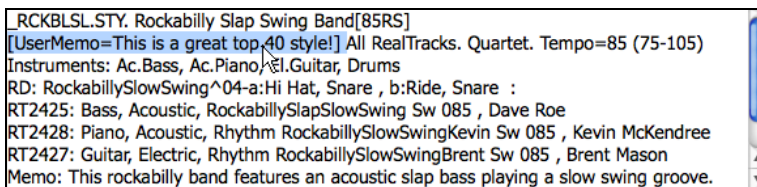
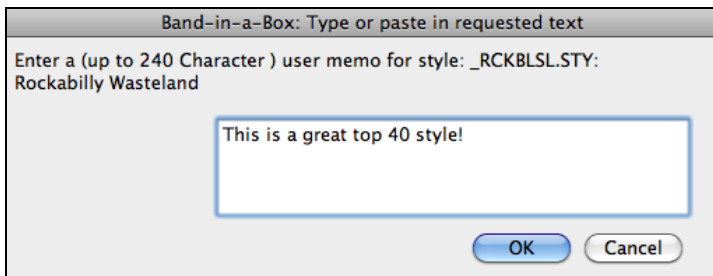
	TSig	EvSw	Tempo	Long Name	Genre	Group	Date	Set#	#Instr	#substyles
_BUBLPOP	R	4/4	ev16	90	21st Century Radio	Modern Pop Pop	2015-11	Misc.	4	2
_HVDANC	R	4/4	ev16	90	Modern Pop Ballad	Modern Pop Pop	2015-11	Misc.	5	2
_POPBLAD	R	4/4	ev16	95	Pop Ballad w/ Synth Bass	Ballad Pop	2015-11	Misc.	4	2
_NEONROK	R	4/4	ev16	85	Neon 80's Rock w/ Synths	Synth Pop Pop	2015-11	RT 231	5	2
_NEONPOP	R	4/4	ev16	85	Neon Pop '80s Synth Ballad	Modern Pop Pop	2016-07	Xtra PAK	5	2
_BLISTER	R	4/4	ev16	85	Blister Fingerpicking Retro Pop	Lite Pop Pop	2016-10	Xtra PAK	5	2
_BEATBOX	R	4/4	ev16	75	Beatbox Hip Hop	Hip Hop Pop	2015-11	Misc.	5	2
_PROMISE	R	4/4	ev16	100	Pop Promise w/ Ele... & Acoustic Guitars	Ballad Pop	2011-11	RT 151	5	2
_PROMISP	R	4/4	ev16	100	Pop Promise Piano & Electric Guitar	Ballad Pop	2011-11	RT 151	5	2
_CHIMERA	R	4/4	ev16	75	Chimera Psychedelic Cloud Rap	Hip Hop Pop	2016-11	RT 272	5	2
_CHILPOP	R	4/4	ev16	75	Electronic Chillout Pop	Modern Pop Pop	2015-11	Misc.	5	2
_GLOWING	R	4/4	ev16	110	Glowing Euro Dance Pop	Modern Pop Pop	2016-07	Xtra PAK	6	2

You can add a custom memo to a style.

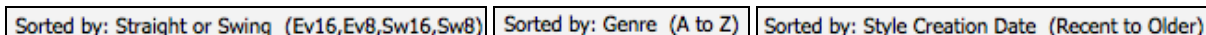
To do this, right click on a style and select the menu item *Add Custom memo for*.



You can then type in a custom memo (e.g. This is a great top 40 style!!) and it will show up in the memo area in the StylePicker.

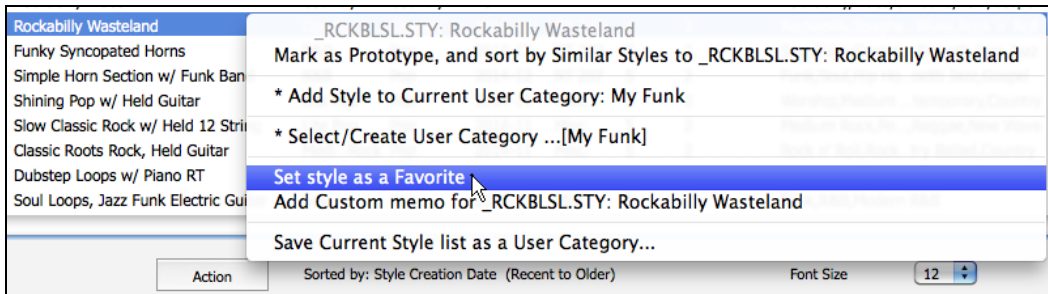


Sorted display now says low to high or high to low, A to Z or Z to A, etc.

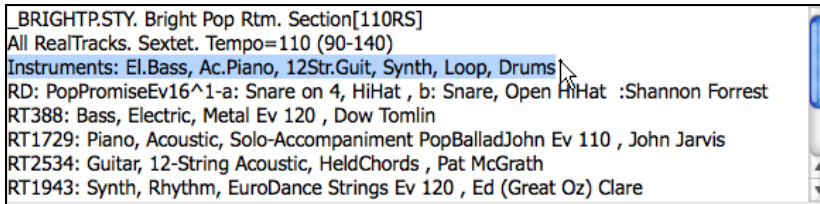


The Fav button has been replaced by the Action button.

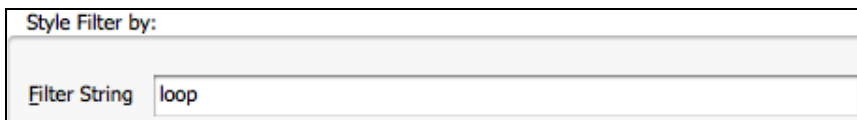
To set the selected style as a favorite, click on the [Action] button or right click on the style in the list, and select *Set style as a Favorite* from the menu. If the style is already a favorite, you can select the *Remove style as a Favorite* menu item.



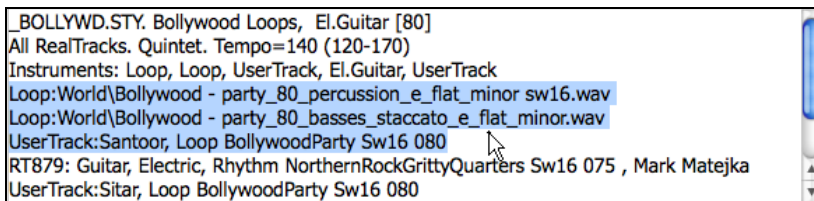
An instrument summary shows in the memo area. (e.g. Instruments: El.Bass, Ac.Piano, 12Str.Guit, Synth, Drums)



Styles with Loops or UserTracks are now displayed in StylePicker with the name of the Loops or UserTracks. You can search for styles with Loop or UserTrack by typing “loop” or “usertrack” in the text filter.



You will then see the name of the Loop or UserTrack in the memo area.



Loops Enhancements

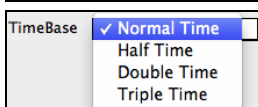
Rests work with Loops. Shots and Holds now also rest instead of continuing to play.

Just add period(s) to chords, and the existing UserTracks will follow them. (Note: There is no specific support for shots or holds by UserTracks. They will just rest when these are encountered.)



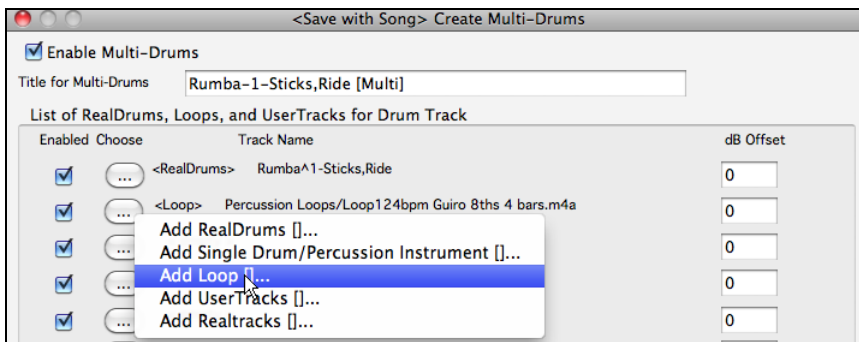
Loops can be set to a timebase (Normal, Half-time, Double-time, or Triple-time).

To set this, use either the tracks button menu or the “Timebase” option in the **Pick a Loop** dialog.

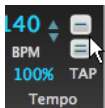


Loops can be combined with drums on the Drums track.

To do this, open the **Create Multi-Drums** dialog (via Drums track button menu - *Multi-Drums / Edit Multi-Drums for this song*).



Tap Tempo Enhancement



Tap tempo has been enhanced. Now, when you tap more than 4 times, the accuracy will improve (through averaging) and you can continue to tap until the target tempo has been reached.

For example, in a 4/4/ style, once you tap 4 times a tempo will be set. But you can keep tapping and the tempo will change every beat, based on the average tempo that you have typed.

Other Features

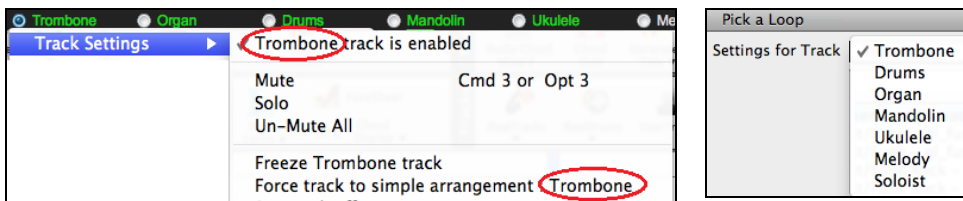
Mixer has been enhanced with double click option to set the mixer values to defaults.

Double click on the slider, and it will set the value to a default value.



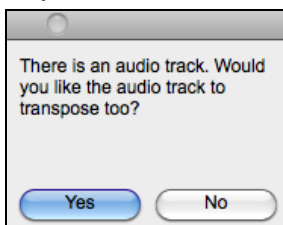
New track names are now listed instead of the old track names in some places.

This includes track button menus and dialogs like **Pick a UserTrack**, **Pick a Loop**, **MIDI Track Picker**, and **Chord Options**.



An alert confirmation shows before transposing the Audio Track when the user has transposed the song.

So you can choose to transpose the Audio Track or not, and it is also clear when transpose is happening.



And more!

Thank you for taking the time to read this introduction to Band-in-a-Box 2017!

PG Music Inc.

Band-in-a-Box®

is protected by copyright and is the property of

PG Music Inc. and its licensors.

Copyright © 1989-2017 PG Music Inc.

All rights reserved.

PG MUSIC INC.

29 Cadillac Avenue

Victoria, BC V8Z 1T3

Canada

Sales:

E-mail: info@pgmusic.com

Phone: Toll-free in USA & Canada: 1-800-268-6272 or 1-888-PG-MUSIC (746-8742)

Phone: Toll-free outside USA & Canada where International Freephone service is available:

+ 800-4PGMUSIC (800-4746-8742)

or 1-250-475-2874 (tolls apply)

Fax: Toll-free in USA & Canada: 1-877-475-1444

or 1-250-475-2937 (tolls apply)

Technical Support:

E-mail: support@pgmusic.com

Phone: Toll-free in USA & Canada: 1-866-9TECHPG (866-983-2474)

or 1-250-475-2708 (tolls apply)

Live Internet Chat: www.pgmusic.com

Be sure to visit the FAQ pages at www.pgmusic.com for information about known troubleshooting issues as well as the latest technical support bulletins.