



2020-2021

# Commuting 101

A BUCKEYE'S GUIDE TO COMMUTING TO CAMPUS



THE OHIO STATE UNIVERSITY

OFFICE OF STUDENT LIFE  
OFF-CAMPUS AND  
COMMUTER STUDENT SERVICES



## WELCOME TO THE COMMUTER GUIDE

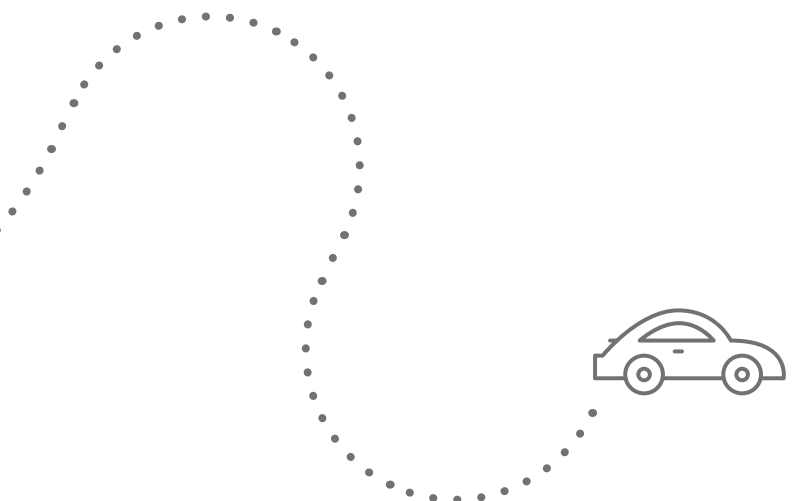
So you're a commuter student, now what? This guide will show you the ins and outs of how to successfully navigate through college as a commuter student. Student Life's Off-Campus and Commuter Student Services is here to help support you and create the extraordinary student experience!



### BUCKEYE TIP



*Keep a look out  
throughout the guide  
to find more Buckeye  
traditions and tips!*



## Table of Contents

<b>WELCOME TO THE COMMUTER GUIDE</b> .....	<b>3</b>
<b>RESOURCES FOR YOU</b> .....	<b>9</b>
<b>GETTING AROUND CAMPUS</b> .....	<b>17</b>
Adaptive Transportation .....	23
<b>GETTING INVOLVED</b> .....	<b>25</b>
On-Campus Jobs.....	29
<b>CAR MAINTENANCE</b> .....	<b>31</b>
Important Numbers .....	35

LIVE YOUR  
**#LIFEINMOTION**  
WITH REC SPORTS!

Take advantage of your Rec Sports membership and visit our facilities! All students taking 4 or more credit hours have a membership included in your student fees.

Rec Sports facilities are easily accessible to commuter students with nearby parking options on campus.



THE OHIO STATE  
UNIVERSITY  
OFFICE OF STUDENT LIFE

RECREATIONAL SPORTS



# STUDENT LEGAL

## WE'VE GOT YOU

LEGAL ADVICE & REPRESENTATION

[studentlegal.osu.edu](http://studentlegal.osu.edu)  
614-247-5853



**Not sure if we can help? Call us!**

## BUCKEYE TRADITIONS

The Ohio State University is full of rich traditions and bucket list items to complete before graduation. From singing Carmen Ohio and watching the band perform Script Ohio to rubbing the Thompson statue head in the library and spending time with friends on the Oval, there are plenty of traditions to fulfill!



### BUCKEYE TIP

#### ***Buckeye Tradition:***

Brutus Buckeye has been the face of The Ohio State University for over 50 years!

Find Brutus on campus and snap a pic with the spirited mascot to kick off your bucket list!

Go to [go.osu.edu/BBL](https://go.osu.edu/BBL) to check out The Ohio State Bucket List and enter to win prizes!



## SECTION 1

# Resources For You

## RESOURCES FOR YOU

Off-Campus and Commuter Student Services (OCCSS) is here to support you! Stop by our office or keep up with us using the information below:

### Off-Campus and Commuter Student Services

3106 Ohio Union  
1739 N. High Street  
Columbus, OH 43210

**Hours:** Monday–Friday | 8 a.m.–5 p.m.


**Phone:** 614-292-0100


**Email:** [offcampus@osu.edu](mailto:offcampus@osu.edu)

**Website:** [offcampus.osu.edu](http://offcampus.osu.edu)

Stay connected with OCCSS commuter news and events through social media!

 *Off-Campus and Commuter Student Services*

 *offcampus\_osu*

 *offcampus\_osu*

## OUR VISION

Student Life's Off-Campus and Commuter Student Services' vision is to improve the quality of life for off-campus and commuter students through education and empowerment, and to continually build and strengthen university and community relationships.



## THE COMMUTER MENTORING PROGRAM

Through our office, you will be paired with a mentor to help you navigate campus life. This is an excellent way to connect with current students at The Ohio State University and get personalized help!

Mentors give one-on-one assistance and provide you with the following:

- Opportunities and resources on campus
- Fairs and events for commuter students
- Important news and announcements
- A sense of community
- Advocacy on your behalf



### BUCKEYE TIP

Looking for a peaceful place to meet with your mentor? Check out Mirror Lake and the Mirror Lake Eatery on south campus!



## DON'T KNOW IF THE MENTORING PROGRAM IS FOR YOU?

### *Commuter Mentors will...*

#### SHARE

tips on commuting to campus

#### ADVOCATE

for you on campus

#### CONNECT

you with other commuter and transfer students

#### CONDUCT

one-on-one time to answer questions and reflect

#### HELP

you find career opportunities

#### ATTEND

the first meeting of a student organization with you

Sign up for the mentoring program on our website at [offcampus.osu.edu](http://offcampus.osu.edu).

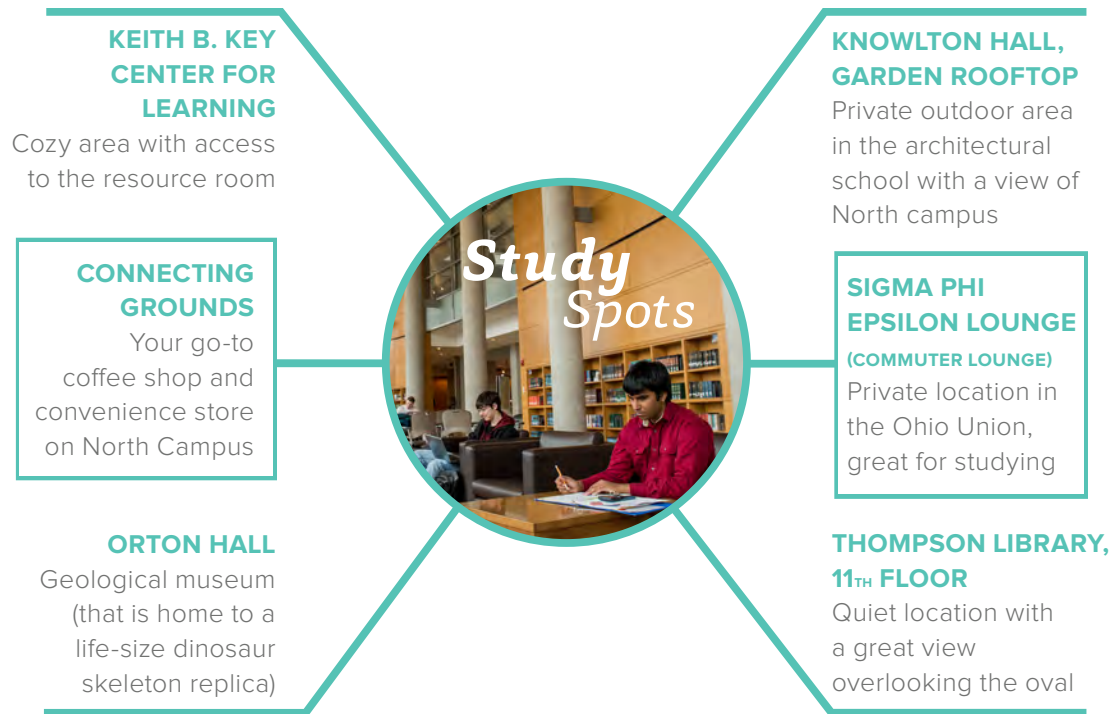
## RESOURCES FOR COMMUTER STUDENTS IN THE OHIO UNION

- **Commuter walk-in hours** at our office (3106 Ohio Union)
- **Semester-long locker access** is available on a first come, first serve basis starting at 8 a.m. on the first day of classes
- **Commuter Kitchen** with fridges and microwaves if you decide to pack a meal
- **Commuter Lounge** to take a peaceful break if you have a long day on campus



### BUCKEYE TIP

Be sure to stop by the D-Tix counter to pick up discounted tickets for concerts and other exciting events happening in Columbus! Visit their Twitter page (@DTixOSU) to keep an eye out for these opportunities.







### BUCKEYE TIP

Ohio Staters, Inc. proudly offers tours of Orton Hall, including the bell tower. Guests have the opportunity to learn more about the historical building, go up into the bell tower and even play the chimes.



## SECTION 2

# Getting Around Campus

## GETTING AROUND CAMPUS



### *Bicycle* or *Car*

- Prevent theft and be sure to Bug Your Bike. Info at: [columbus.gov/bugyourbike](http://columbus.gov/bugyourbike)
- Perform regular maintenance on your bike to keep it working properly
- Bring a bike lock to keep your bike secure
- Perform regular maintenance on your car to keep it running properly
- Purchase your parking permits at: [osu.campusparc.com](http://osu.campusparc.com)

### Off-Peak Parking Hours:

To promote safety, some on-campus parking restrictions are reduced after 4 p.m. on weekdays, all day on weekends and on holidays to encourage customers to use the nearby parking lots. Check [osu.campusparc.com](http://osu.campusparc.com) for more info on these specific times.



### BUCKEYE TIP

As you commute onto campus during Michigan Week, keep a look out for the M's crossed out on every building and sign on campus!

## CHECKLIST FOR WHAT TO KEEP IN YOUR CAR

- |                          |                      |                          |                         |
|--------------------------|----------------------|--------------------------|-------------------------|
| <input type="checkbox"/> | <i>Umbrella</i>      | <input type="checkbox"/> | <i>Blanket</i>          |
| <input type="checkbox"/> | <i>Snacks</i>        | <input type="checkbox"/> | <i>Motor oil</i>        |
| <input type="checkbox"/> | <i>Toiletries</i>    | <input type="checkbox"/> | <i>Windshield fluid</i> |
| <input type="checkbox"/> | <i>Extra clothes</i> | <input type="checkbox"/> | <i>Emergency kit</i>    |
| <input type="checkbox"/> | <i>Phone charger</i> |                          |                         |
| <input type="checkbox"/> | <i>Jumper cables</i> |                          |                         |
| <input type="checkbox"/> | <i>Snow scraper</i>  |                          |                         |



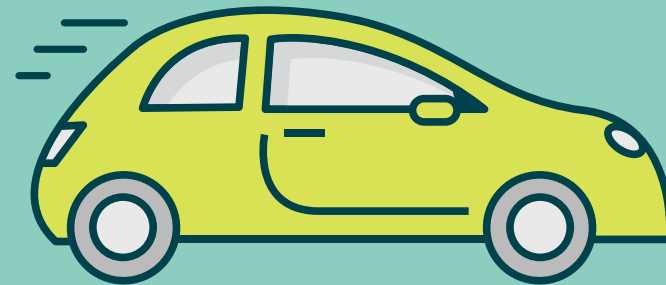
## BACKPACK CHECKLIST

- |                          |                                     |                          |                  |
|--------------------------|-------------------------------------|--------------------------|------------------|
| <input type="checkbox"/> | <i>Computer/tablet</i>              | <input type="checkbox"/> | <i>Deodorant</i> |
| <input type="checkbox"/> | <i>Pencil bag with pens/pencils</i> | <input type="checkbox"/> | <i>Snacks</i>    |
| <input type="checkbox"/> | <i>Notebooks and planner</i>        | <input type="checkbox"/> | <i>Water</i>     |
| <input type="checkbox"/> | <i>Phone charger</i>                | <input type="checkbox"/> | <i>Umbrella</i>  |
| <input type="checkbox"/> | <i>Headphones</i>                   |                          |                  |
| <input type="checkbox"/> | <i>BuckID</i>                       |                          |                  |
| <input type="checkbox"/> | <i>Lip balm</i>                     |                          |                  |



### BUCKEYE TIP

Be sure to avoid leaving valuables in your car by bringing them with you throughout the day.



Looking to save money on gas?

Want company on your drive to campus or long distance drive?

Check out [offcampus.osu.edu](https://offcampus.osu.edu) for more information.

ONLINE RIDESHARE AND

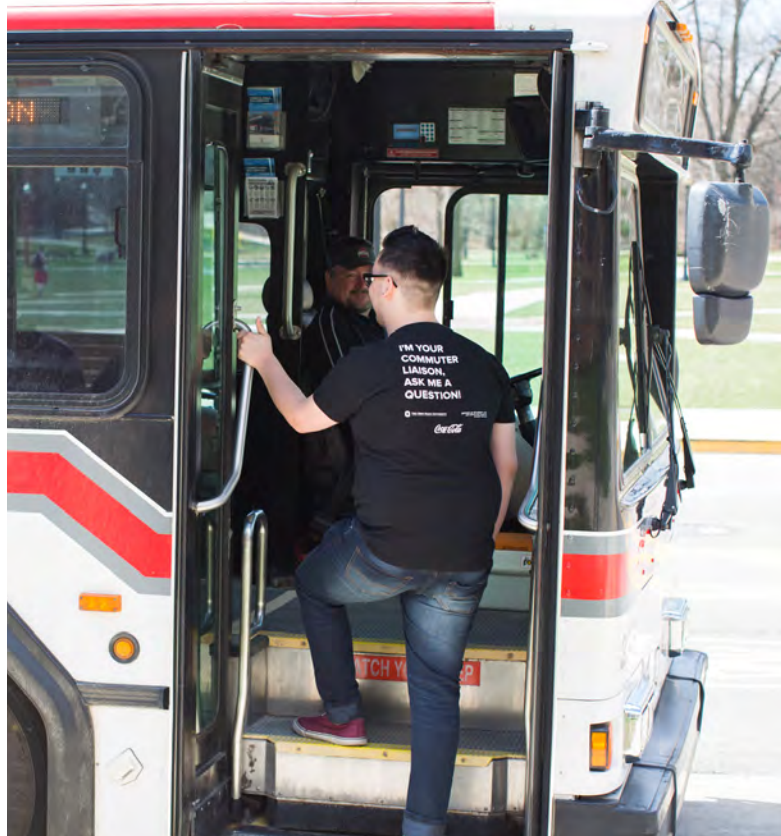
# CARPOOL SERVICE

## CABS

- FREE Transit through CABS provides you with safe, reliable and clean transportation around campus.
- Download the Ohio State University App to track the buses in real time!

## COTA

- Explore the greater Columbus area using your BuckID! Fees to ride the COTA are automatically included in tuition.
- Download the Transit App to track the COTA bus routes!



## ADAPTIVE TRANSPORTATION

### CABS Paratransit

- Door-to-door adapted transportation whether you're on or off campus
- All faculty, staff and students with an injury or medical condition restricting mobility are eligible for adapted transportation services. If you are in need of this resource, contact the department at 614-292-6202, or go to their website at: [ttm.osu.edu/paratransit](http://ttm.osu.edu/paratransit)

### COTA Project Mainstream

- Adaptive transportation through the city of Columbus and COTA
- COTA Mainstream is a shared-ride public transportation service providing origin-to-destination transportation for people whose functional limitations prevent them from riding COTA's fixed-route buses for some or all of their trips. For more information, visit [go.osu.edu/COTAMainstream](http://go.osu.edu/COTAMainstream)

### ADA Accessible Parking

- For additional resources on parking permits and where to park, visit: [go.osu.edu/ADA](http://go.osu.edu/ADA)



The Department of Public Safety has many programs specifically designed to keep commuters safe. Their Safe Ride program provides you with safe transportation across campus through the TapRide App. Check out their website for more information: [dps.osu.edu](https://dps.osu.edu)

Off-Campus & Commuter Student Services also has **FREE safety devices** available year round in our office for your home. Stop by to pick up yours today!



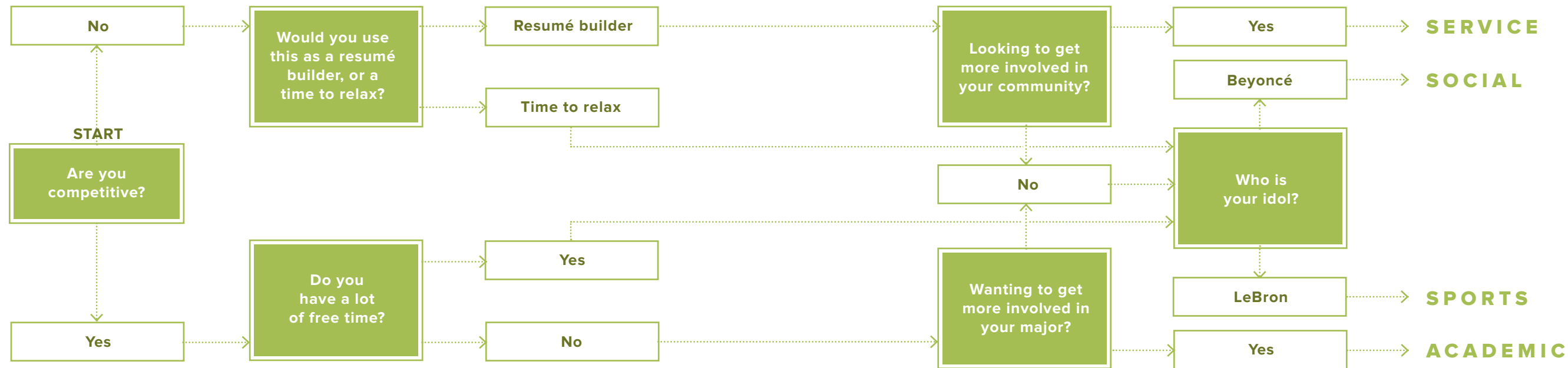
## FREE SAFETY DEVICES



### SECTION 3

# Getting Involved

## WHICH STUDENT ORGANIZATION IS RIGHT FOR YOU?



## GETTING INVOLVED

There are **1,300+** organizations to pick from when deciding what you want to get involved in! Whether a club is focused on academics, volunteering or sports, any way you decide to get involved guarantees a more complete Ohio State experience.

Major events to help you get acclimated:

- Welcome Week
- Involvement Fairs in August and January (A great place to learn about what Ohio State offers)
- University-wide and degree specific career fairs

**Student Organizations:** [activities.osu.edu/involvement/student\\_organizations](https://activities.osu.edu/involvement/student_organizations)

**Campus Events:** [activities.osu.edu/programs/major\\_campus\\_events](https://activities.osu.edu/programs/major_campus_events)



### BUCKEYE TIP

BuckeyeThon is the largest student-run philanthropic event in Ohio, raising funds and awareness for the Hematology/Oncology/Bone Marrow Transplant Unit at Nationwide Children's Hospital. BuckeyeThon engages thousands of students annually, fostering a spirit of philanthropy to make a difference For The Kids. The annual Dance Marathon celebrates the year's fundraising while students dance the night away in the Ohio Union! Visit: [buckeyethon.osu.edu](https://buckeyethon.osu.edu)

## ON-CAMPUS JOBS - WHY DO IT?



### Make Money

Shorten your commute by having your school and job in one place!

Student Life's Career Counseling and Support Services, located in the Younkin Success Center, offers career counseling, mock interviews, resume review and career talks, all available by appointment. Visit: [ccss.osu.edu](https://ccss.osu.edu)



### Flexible, Convenient Student Positions



### BUCKEYE TIP

Update your professional wardrobe for free by checking out the Career Closet! Visit [go.osu.edu/careercloset](https://go.osu.edu/careercloset) to learn more about where and when the closet is available.



### Meet New Friends

## Join Our Team!

Off-Campus and Commuter Student Services is looking for dedicated students to build community for students who live off-campus and commute.

### What you can expect:

- 10 hours a week
- Flexible schedules for breaks and finals
- Leadership and development opportunities

Apply for open positions on Handshake: [handshake.osu.edu](https://handshake.osu.edu).



## SECTION 4

# Car Maintenance

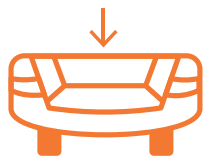


## How to Change a Car Tire



### TOOLS NEEDED

- Car Jack
- Tire Iron



### 1. LOCATION

Tools and spare tires are most often kept in the trunk under the carpet.



### 2. JACK POINTS

The four jacking points are located two to each side, outlined above.



### 3. LOOSEN BOLTS

Loosen by turning the iron counter clockwise, but do not fully remove.



### 4. RAISE CAR

Align the car jack under the car and twist to raise the car by turning clockwise.



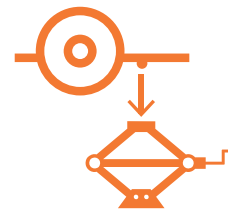
### 5. REMOVE TIRE

Once the car tire is lifted, continue to unbolt the nuts and pull the tire off of its frame.



### 6. REPLACE TIRE

Put replacement tire on the car and secure with bolts to hold the tire in its place.



### 7. LOWER CAR

Lower the car jack slowly until the tire is safely back on the ground.



### 8. TIGHTEN

Tighten each of the bolts by turning the tire iron clockwise. You're done!

### REPLACE THE AIR FILTER

By replacing clogged air filters on older vehicles with carbureted engines, you can improve fuel economy and acceleration

### GET AN OIL CHANGE

This is one of the simplest services you can perform to improve your vehicle's fuel economy

## Car Maintenance Checklist

### CHECK THE LIGHTS

Regularly check to make sure no headlights, turn signals or brake lights are out of order, and repair immediately if they are

### WASH YOUR VEHICLE

Keeps the paint and wax on the car

### CHECK YOUR TIRES

Regularly check tire pressure to stay safe and prevent a flat tire

## IMPORTANT NUMBERS TO KNOW

### Office of Student Life

614-292-9334  
[studentlife.osu.edu](http://studentlife.osu.edu)

### Suicide Prevention Hotline

614-221-5445  
[suicidepreventionservices.org](http://suicidepreventionservices.org)

### Columbus Division of Fire

614-221-3132  
[columbus.gov/fire/](http://columbus.gov/fire/)

### CampusParc

614-688-0000  
[osu.campusparc.com](http://osu.campusparc.com)

### Student Wellness Center

614-292-4527  
[swc.osu.edu](http://swc.osu.edu)

### Student Advocacy Center

614-292-1111  
[advocacy.osu.edu](http://advocacy.osu.edu)

### Transportation and Traffic Management

614-292-RIDE  
[ttm.osu.edu](http://ttm.osu.edu)

### NON-EMERGENCY #'S:

#### Ohio State Police

614-292-2121  
[ps.ohio-state.edu/police/](http://ps.ohio-state.edu/police/)

### Student Legal Services

614-247-5853  
[studentlegal.osu.edu](http://studentlegal.osu.edu)

### Counseling and Consultation Services

614-292-5766  
[ccs.osu.edu](http://ccs.osu.edu)

#### Columbus Police

614-645-4545  
[columbuspolice.gov](http://columbuspolice.gov)

### Collegiate Recovery Community

614-292-4527  
[swc.osu.edu/services/collegiate-recovery-community](http://swc.osu.edu/services/collegiate-recovery-community)

## **Student Life Off-Campus and Commuter Student Services**

3106 Ohio Union  
1739 N. High Street  
Columbus, OH 43210

**Hours:** Monday - Friday | 8 a.m. - 5 p.m.

**Phone:** 614 292 0100

**Email:** [offcampus@osu.edu](mailto:offcampus@osu.edu)

**Website:** [offcampus.osu.edu](http://offcampus.osu.edu)