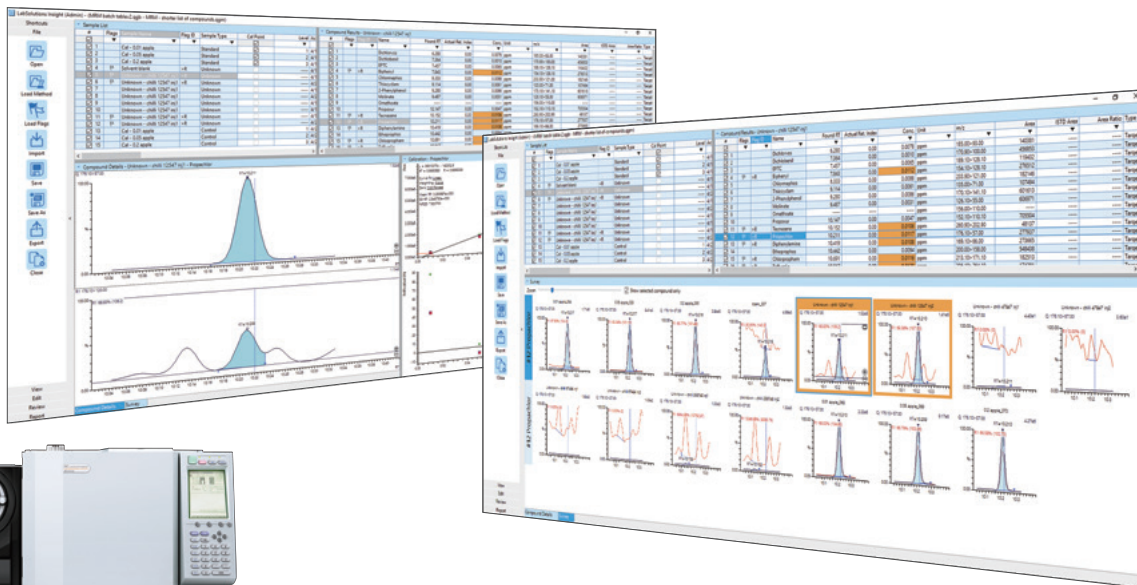


Multi-Analyte Quantitation Software

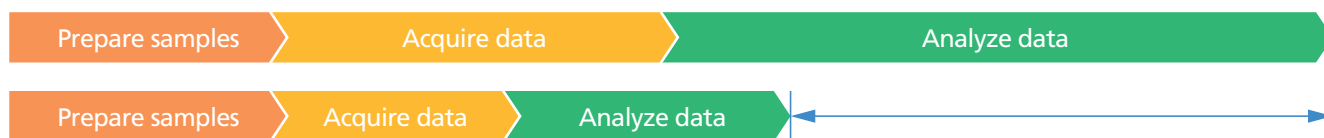
LabSolutions Insight



LabSolutions Insight

Faster Data Review for Dramatically Higher Productivity

Mass spectrometry laboratories can acquire thousands of chromatograms per day. Insight provides tools to streamline data review and focus on the chromatograms that need critical attention. Insight automatically applies your peak detection criteria to data and flags any deviations, allowing you to analyze data more efficiently.



Reduce your data review bottleneck with Insight's customizable review screens and automated QA/QC flagging. Combined with Shimadzu's ultra-high-speed acquisition, a complete solution is offered to the high-throughput mass spectrometry laboratory.

› Intuitive Operation

An easy-to-use and configurable interface allows new users to be productive quickly.

› Automated QA/QC Flagging and Peak Comparison

Insight contains multiple QA/QC flagging criteria for retention times, reference ion ratios, concentration limits, and more. Compare all peaks against a reference peak or reference ions.

› Data Integrity

LabSolutions Insight is compatible with LabSolutions DB, enabling traceability, audit trail, and user management capabilities.

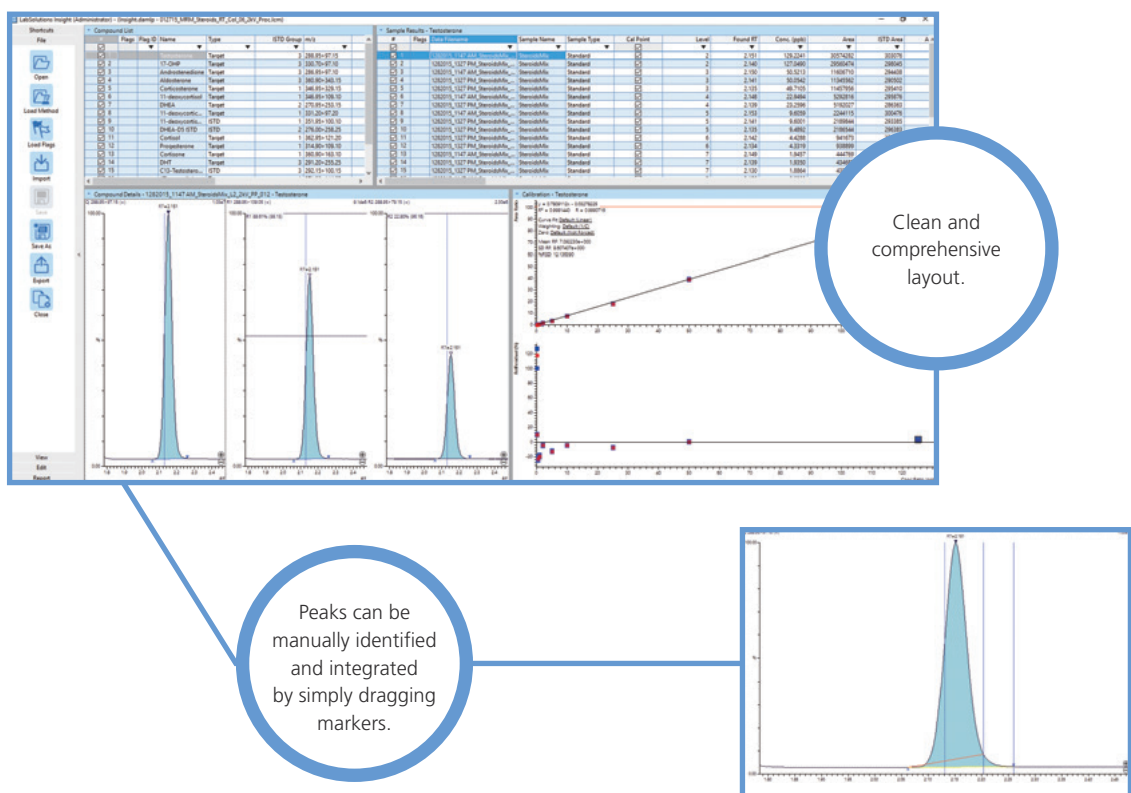
› Efficient Workflow

Insight allows the analyst to focus their attention where it is needed. Flag-based labeling, filtering, peak comparison functions, and centralized results files all enable your laboratory to work faster and more efficiently.

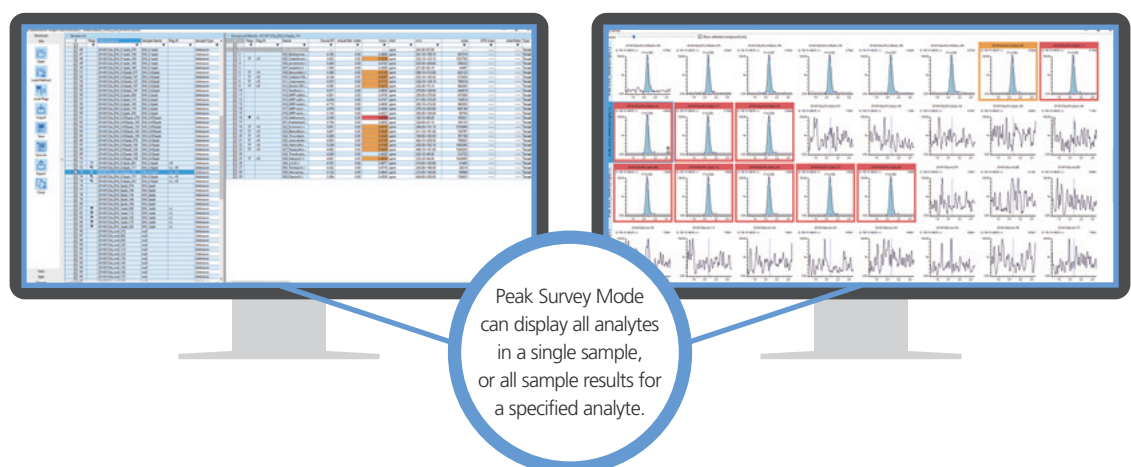
Note: i-PeakFinder algorithm, database and new workflow are compatible with LCMS only.

Intuitive Operation

Create custom configurations accommodating your unique requirements. Generate intuitive and meaningful reports, reduce costs, and improve the efficiency of your data processing environment.



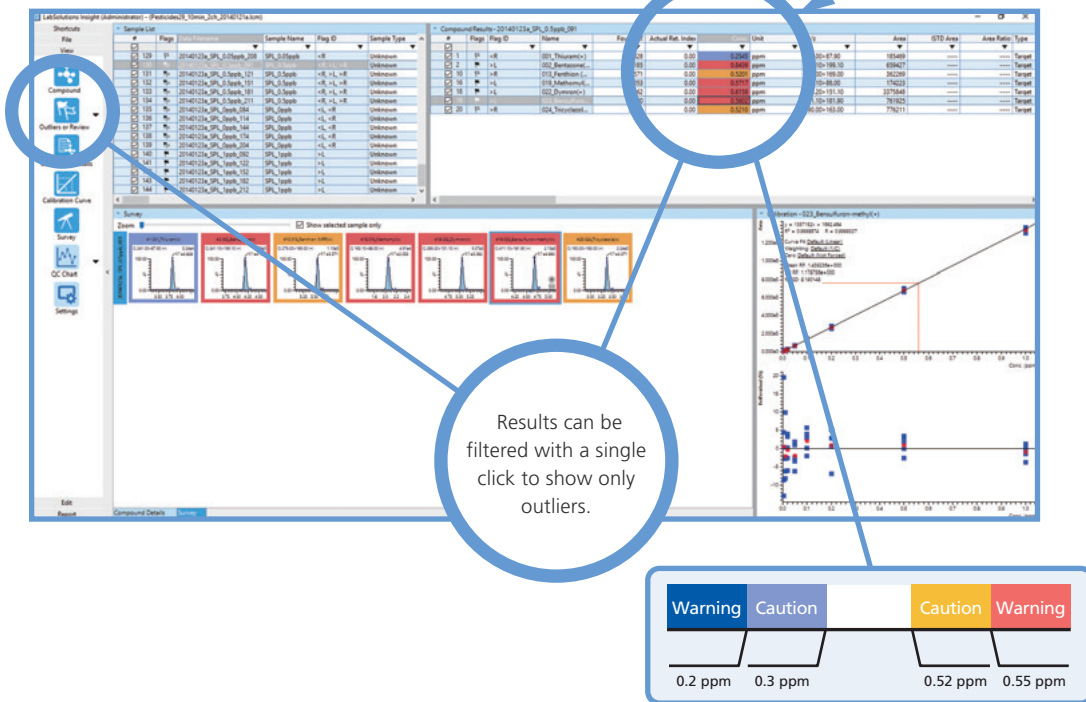
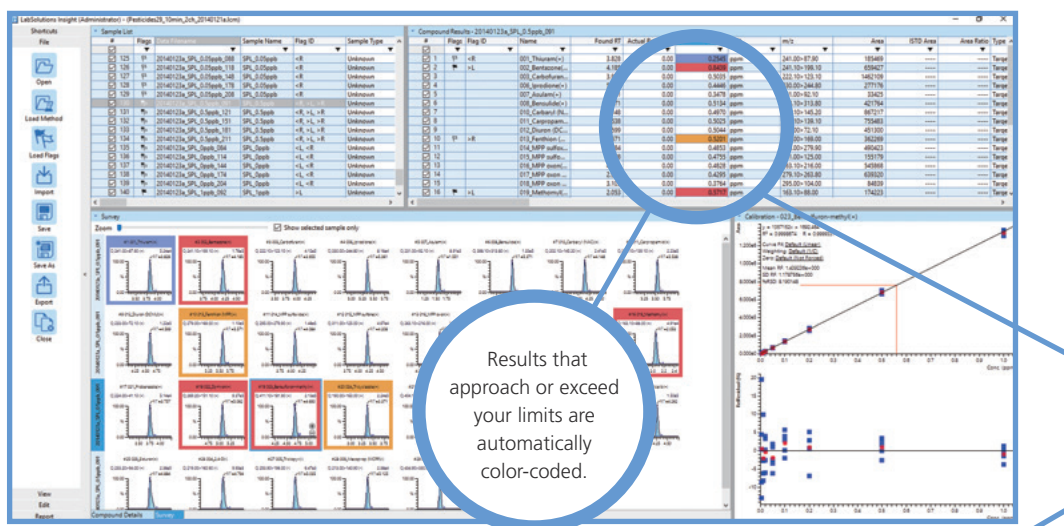
Configurable layouts can be conveniently displayed on multiple monitors. Switching quickly between sample centric and compound centric views enables analysts to work according to their preference.



Automated QA/QC Flagging and Peak Comparison

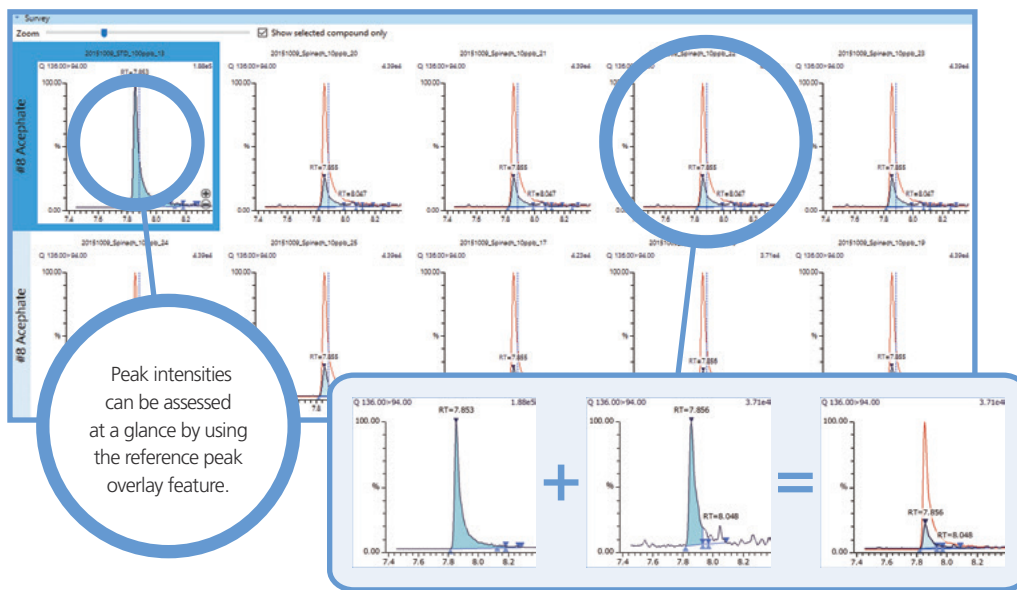
Highlight Peaks According to Your Limits

Insight contains over 75 user-controlled QA/QC flagging criteria for retention times, reference ion ratios, concentration limits, and more. Configurable color-coding is available to highlight results that are near or outside of limits.



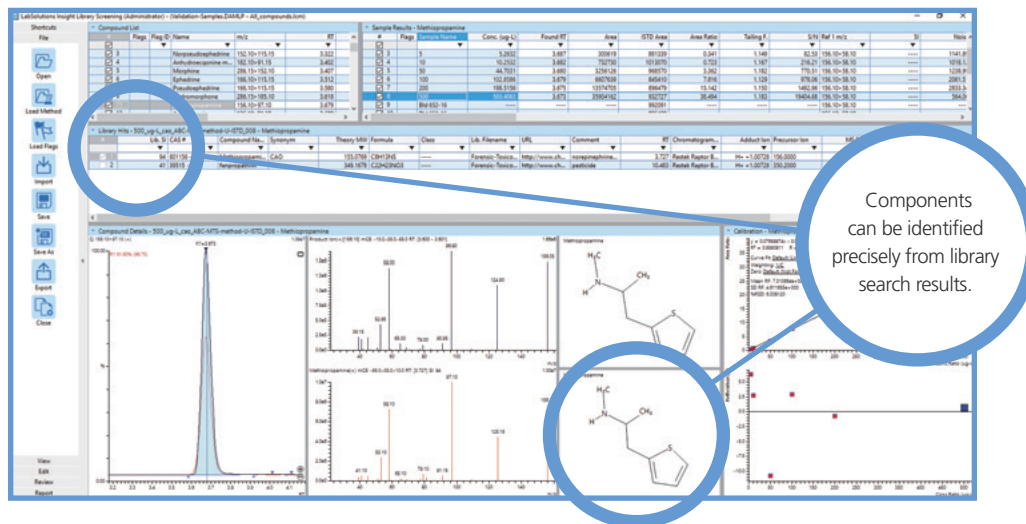
Peak Data Comparison

Insight allows the user to view a large number of chromatograms at once. To make data review easier, each chromatogram can be overlaid with a reference peak, such as the reference ion chromatogram or a low-level standard.



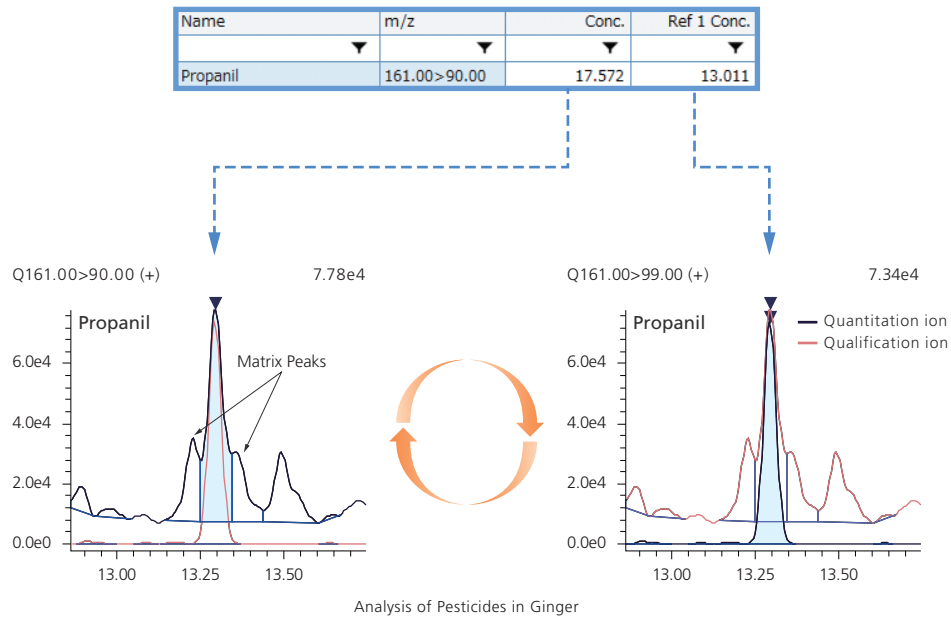
MS/MS Libraries and Compound Identification

Optional LabSolutions Insight Library Screening software for LCMS offers MS/MS library search capabilities. Instrument parameters and MS/MS library spectra are available to deliver faster data acquisition, higher data quality, and enhanced identification. Shimadzu's LabSolutions Insight Library Screening software offers easy viewing of your compounds of interest, including structural information, retention time, and library similarity score.



Easily Control of Quantitation and Reference Ions

Analysts can update retention times and reference ion ratios quickly and easily from a single standard or a group of standards. It is also easy to reassign quantitation ions as needed for method development purposes or because of unexpected matrix interferences.



Concentration Summation for Isomers

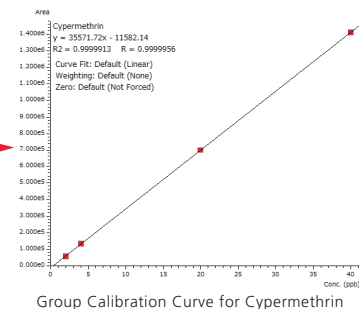
Some methods require the summation of multiple peaks to be reported as a single value. Insight easily allows compound grouping, as in the case of pesticide isomers below.

#	Name	m/z	Group #	Area	Conc.
<input checked="" type="checkbox"/>	'BHC'				
<input checked="" type="checkbox"/> 49	alpha-BHC	180.90>144.90	2	1990616	9.72734
<input checked="" type="checkbox"/> 61	beta-BHC	180.90>144.90	2	1588946	174.79865
<input checked="" type="checkbox"/> 68	gamma-BHC (Lindane)	180.90>144.90	2	1733257	9.61008
<input checked="" type="checkbox"/> 84	delta-BHC	180.90>144.90	2	996980	9.81085
<input checked="" type="checkbox"/> 389	BHC	----	2	6309799	203.94692

Group Quantitation of α , β , γ , and δ -BHC (Concentration Sum)

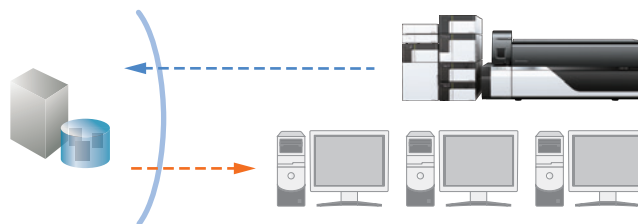
#	Name	m/z	Group #	Area	Conc.
<input checked="" type="checkbox"/>	'Cypermethrin'				
<input checked="" type="checkbox"/> 355	Cypermethrin-1	163.10>127.10	1	549034	10.14215
<input checked="" type="checkbox"/> 357	Cypermethrin-2	163.10>127.10	1	184422	9.49396
<input checked="" type="checkbox"/> 358	Cypermethrin-3	163.10>127.10	1	239856	9.58511
<input checked="" type="checkbox"/> 361	Cypermethrin-4	163.10>127.10	1	402696	9.47377
<input checked="" type="checkbox"/> 388	Cypermethrin	----	1	1376009	39.00826

Group Quantitation of Cypermethrin (Group Calibration Curve)



Data Integrity

LabSolutions Insight is compatible with LabSolutions DB, enabling traceability, audit trail, data management, and user management capabilities.



Database Security

Compliance with 21 CFR Part 11 type regulations in a GxP environment requires that data be authenticated and secure. Insight is compatible with LabSolutions DB/CS to facilitate these tasks.

Management of Records

LabSolutions Insight and LabSolutions DB/CS enable compliance with regulations regarding user login, assignment of user rights, and accessibility to data.

Easily Understood Audit Trails

The new workflow offered by LabSolutions Insight manages all information related to data analysis as a single file, resulting in simple and easy-to-understand audit trail functionality.

Efficient Workflow

Processing and reporting sample data is a critical part of your laboratory's workflow. Insight offers multiple ways to produce meaningful reports, or to interface to your LIS. Insight also offers a choice of processing methods to suit your needs.



Insight can process samples by updating the raw data files or by creating independent results files according to the user's preference. Likewise, create sample reports on a per sample basis, or a per batch basis. Insight is also compatible with HL7 protocol.



Centralized Management of Analytical Results

Results files record concentration results, analysis parameters, calibration information, peak integration results, audit trail information, and more.

Easily Compare and Review Results

Data results for entire sample sets are readily accessible. Convenient and comprehensive display enables rapid comparison.

Efficient File Processing

Spend less time waiting for your files to load. Insight allows processing in real time while the system is retrieving files, making data review more efficient.

Note: Database and enhanced workflow are compatible with LCMS only.

Using LabSolutions Insight in Combination with Databases and Method Packages

When used in combination with databases or application-specific method packages, the entire analytical process, from measurement to data analysis, can be performed easily without having to optimize analytical conditions.

Food Safety Analysis



- GC/MS**
- Quick-DB Database for Residual Pesticide Analysis
 - Smart Pesticides Database

- LC/MS**
- Method Package for Residual Pesticides
 - Method Package for Veterinary Drugs

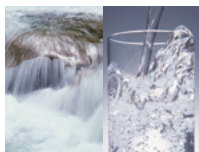
Metabolite Component Analysis



- GC/MS**
- Smart Metabolites Database

- LC/MS**
- MRM Library for Metabolic Enzymes (Yeasts) Library
 - Method Package for Lipid Mediators
 - Method Package for Primary Metabolites

Environmental Pollutant Analysis



- GC/MS**
- Compound Composer
 - Smart Environmental Database

- LC/MS**
- Method Package for Water Analysis

Forensic Toxicological Analysis



- GC/MS**
- Smart Forensic Database
 - Quick-DB GC/MS/MS Forensic Toxicological Database

- LC/MS**
- Rapid Toxicological Drug Screening System
 - Method Package for Forensic Toxins

Using Multiple Client Computers

If multiple computers are used to analyze multi-analyte data, LabSolutions Insight does not need to be installed on all the computers. As long as the computers are connected via a network, even client computers without LabSolutions Insight installed can be used for data analysis.*1

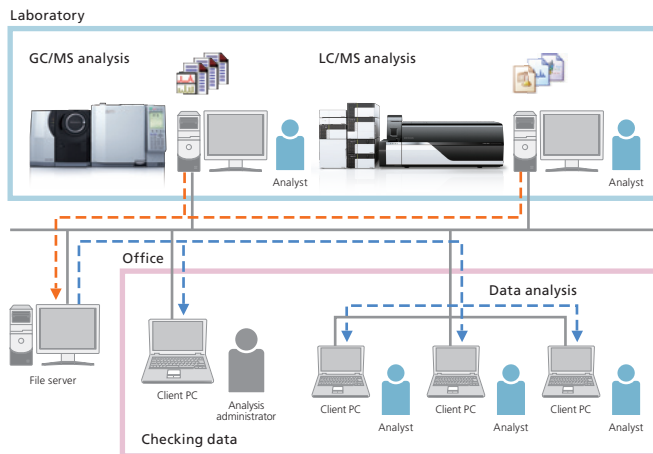
*1 An additional license is required for each computer used to analyze data.

Compatible Models

GCMS-TQ series, GCMS-QP series
LCMS-8030, LCMS-8040, LCMS-8045, LCMS-8050, LCMS-8060

Conditions

Operating system: Microsoft Windows 7 Professional/Microsoft Windows 10 Professional
Workstation software: GCMSsolution Ver. 4.45 or later
LabSolutions LCMS Ver. 5.91 or later
LabSolutions DB LCMS/LabSolutions CS Ver. 6.81 or later



Note: For more than five users, using a file server for file management is recommended.



Shimadzu Corporation
www.shimadzu.com/an/

For Research Use Only. Not for use in diagnostic procedures.

This publication may contain references to products that are not available in your country. Please contact us to check the availability of these products in your country.
Company names, products/service names and logos used in this publication are trademarks and trade names of Shimadzu Corporation, its subsidiaries or its affiliates, whether or not they are used with trademark symbol "TM" or "®".
Third-party trademarks and trade names may be used in this publication to refer to either the entities or their products/services, whether or not they are used with trademark symbol "TM" or "®".
Shimadzu disclaims any proprietary interest in trademarks and trade names other than its own.

The contents of this publication are provided to you "as is" without warranty of any kind, and are subject to change without notice. Shimadzu does not assume any responsibility or liability for any damage, whether direct or indirect, relating to the use of this publication.