

PADDINGTON

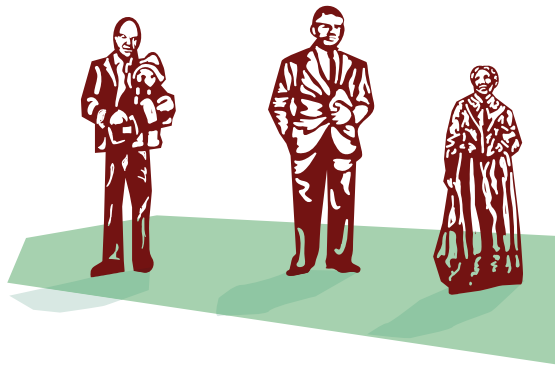
PUBLIC ART TRAIL



RESTAURANTS	☺	UNDERGROUND	🚇
COFFEE SHOPS	☕	BUS STOP	🚌
BAR/PUBS	🍺	TAXI RANK	🚖
PING PONG	🏓	CYCLE HIRE	🚲
TOILETS	♿	CYCLE PARKING	🚲
CASH POINTS	£	PARKING	P
TOWPATH	—		

DISCOVER PADDINGTON

Bridges, bronzes, busts and bears make up a stunning range of public art pieces. The trail contains 22 different installations and sculptures, charting Paddington's industrial heritage, medical and scientific pioneers, engineering and military history, royal, stage and literary connections. The Public Art Trail tells the story of Paddington's past and its regeneration.



Visit thisispaddington.com or follow us on Twitter [@inpaddington](https://twitter.com/inpaddington) for more information about our trails, events, places to eat and things to do in Paddington.

© The Paddington Partnership and Londonist, 2016.

UNKNOWN SOLDIER



1

Charles Sargeant Jagger
Bronze / Unveiled November 1922
Platform One, Paddington Station

At the height of World War One, almost twenty thousand mailbags were transported from Britain to France every day carrying almost two million letters to the front line. This monumental bronze by Sargeant Jagger MC (b. UK 1885 - 1934), himself a veteran of Gallipoli, was unveiled by Viscount Churchill on Armistice Day, 11 November 1922, exactly two years after the Unknown Warrior had been laid to rest at Westminster Abbey. It captures a soldier as he reads a letter from home and honours the employees of the Great Western Railway who died in both World Wars, and whose names are retained in a sealed casket within the plinth.

As part of the ongoing memorials to World War One, during 2014, members of the public were invited to write a letter to the soldier with thousands being submitted. All of these letters are available to read online as a permanent memorial. *Unknown Soldier* is one of Sing London's *Talking Statues*, with the narrative here written by Tony Harrison and voiced by Patrick Stewart.

PADDINGTON BEAR™



2

Marcus Cornish
Bronze
Unveiled 2000
Platform One, Paddington Station

Located in pride of place, underneath the station clock on Platform One of Paddington Station, this bronze statue of the much loved fictional character *Paddington Bear* was unveiled by the author of the Paddington stories, Michael Bond, on 24 February 2000. The statue by London based sculptor Marcus Cornish (b. UK 1964) is based on the book illustrations of Paddington by Peggy Fortnum and shows Paddington, newly arrived from darkest Peru, sitting on his battered suitcase, with a label around his neck reading *Please look after this bear. Thank you.* The location marks the spot where Paddington was first found by the Brown family, who welcomed him to their London home as described in the first of now more than twenty Paddington books *A Bear Called Paddington*, published in 1958.



3

Michelle Heron
Unveiled 2014
Platform One, Paddington Station

Take a seat next to Paddington Bear himself! Offering the perfect resting spot and photo opportunity, the *Paddington Bear Book Bench*, located on Platform One, illustrates Paddington Bear holding a marmalade sandwich and taking in the hustle and bustle of station life. Designed by Michelle Heron (b. UK 1980), the *Paddington Bear Book Bench* was originally part of the National Literacy Trust's *Books About Town* trail during 2014 and is now on loan to Paddington Station from owner Alan Daly. It is one of 50 benches shaped like an open book which formed a sculpture trail organised by Wild in Art, and which were auctioned to raise funds for the National Literacy Trust. Born in Norwich, Michelle Heron studied at the University of Hertfordshire and her work has been included in various sculpture trails including *Books About Town* and *Transport* for London's *Year of the Bus* during 2014.



PADDINGTON BEAR™ GREEN PLAQUE

4

Commissioned by STUDIOCANAL
Unveiled December 2014
Platform One, Paddington Station

Unveiled in December 2014 by Michael Bond's daughter Karen Jankel, this iconic Green Plaque honours Paddington Bear at the very location on Platform One of Paddington Station where he was discovered by the Brown family in the first Paddington book by Michael Bond. Paddington Station is one of the busiest in London, welcoming passengers to London from around the world. The Paddington Bear story forms a vital part of this unique environment.

PADDINGTON™



5

Michael Bond
Commissioned 2014
Paddington Bear Shop, Paddington Station

Located in the station after which Paddington Bear was named *Paddington* is depicted as in the Michael Bond books. Wearing his blue duffle coat and red hat, he is just like the stuffed toy Michael Bond purchased in Selfridges Department Store on Christmas Eve in 1956, the start of an amazing journey for a small but ever-so-important bear. This Paddington formed part of the *Paddington Trail* in November and December 2014, to mark Paddington's cinematic debut in November 2014. He now lives permanently at the Paddington Bear Shop.

ISAMBARD KINGDOM BRUNEL



6

John Doubleday
Bronze
Unveiled 1982
Platform Eight, Paddington Station

Acclaimed Victorian engineer, Isambard Kingdom Brunel (b. UK 1806 - 1859) revolutionised public rail transport through his appointment in 1833 as Chief Engineer of the Great Western Railway and the ensuing route from London's Paddington Station to Bristol and the West of England. This seated bronze statue of Brunel forms a two part work by John Doubleday (b. UK 1947) commissioned by the Bristol and West Building Society. It was unveiled on 26 May 1982 by The Lord Mayor of Westminster; its standing partner piece, located in Bristol, at the other end of Brunel's famous railway line, was unveiled there on the same day. The statue has been recently relocated to Platform Eight and now captures Brunel as he looks to the Directors' Balcony. *Isambard Kingdom Brunel* is one of Sing London's *Talking Statues*, this one written by Rachel Wagstaff and Duncan Abel, voiced by Hugh Bonneville.

Leave Paddington Station and cross Praed Street into London Street, towards Norfolk Square.

PADDINGTONSCAPE



7

Hannah Warren
Commissioned 2014
Norfolk Square Gardens (May to October)
Hilton London Paddington, Lobby (November to April)

Hannah Warren (b. UK 1983) is a London-based, award-winning designer. *Paddingtonscape*, one of the statues from the *Paddington Trail* in 2014, showcases the various landmarks and street scenes in and around Paddington, featuring glimpses of its famous bridges, narrowboats, cafés and gardens. This Paddington is a reminder of the regeneration of the area, and the work of the local Business Improvement District, PaddingtonNow. He has a summer home in Norfolk Square Gardens and, like every good bear, hibernates in the winter (at the Hilton London Paddington)!

Continue through Norfolk Square Gardens to Norfolk Place, pass the Frontline Club and head through the arched gates at St Mary's Hospital to South Wharf Road.

GETTING BACK ON THE RIGHT FOOT



8

Allan Sly
Bronze
Unveiled 1993
QEQM Wing, external
St Mary's Hospital, South Wharf Road

Standing at almost 14 feet, this bronze statue, sometimes referred to as *The Messenger*, captures a London bike messenger with his distinctive helmet, bag and clothing. Commissioned by Nicholas Kent and now in the collection of Imperial College Healthcare Charity, the work was unveiled in 1993 and is a part companion piece to *The Window Cleaner* by Sly (b. UK 1951) which is located in nearby Chapel Street. Nicholas Kent was Director of Camden's Tricycle Theatre from 1984 to 2012 and the bronze by Sly was commissioned in memory of Kent's mother who had been a patient at St Mary's Hospital. Elected Fellow of the Royal Society of British Sculptors in 1992, Allan Sly studied in London at the City & Guilds London Art School and the Royal Academy of Arts. Take a quick look in your pocket to see if you have a two pound coin; if so it could have been designed by Sly for the Royal Mint in 2003!



QUEEN ELIZABETH QUEEN MOTHER

9

Vivien Mallock
Bronze
Unveiled 2002
QEQM Wing, foyer
St Mary's Hospital, South Wharf Road

The last artist for whom Queen Elizabeth Queen Mother (b. UK 1900-2002) sat for a portrait, Vivien Mallock (b. UK 1945) is a British sculptor celebrated for her life-size portrait statues and her ability to capture the personality within her subject. The resulting bronze is set in the foyer of the QEQM Wing of St Mary's Hospital and is within the collection of Imperial College Healthcare Charity. This figure was commissioned by St Mary's Hospital Trust and was unveiled by the Queen Mother's grandson, Prince Edward, Earl of Wessex and his wife Sophie, Countess of Wessex in November 2002. As agreed by the Hospital's Trustees, subsequent castings within the limited edition have attracted a donation to the Hospital; this includes the casting commissioned by George Goring for the lobby of The Goring Hotel, Belgravia. Queen Elizabeth Queen Mother often visited this hotel and this version is located on a plinth designed by her grandson, Viscount Linley.

10

Julian Opie
Glass installation
Commissioned 2011-2012
St Mary's Hospital, South Wharf Road

Pssst! You aren't the only one strolling down South Wharf Road. Look up as you go past the Lindo Wing of St Mary's Hospital to spot fellow walkers by Julian Opie (b. UK 1958). Commissioned by Imperial College Healthcare Charity between 2011 and 2012, these trademark figures by Opie are set within first storey glass installations on each side of the entrance. Forming part of a recent refurbishment of the 1930s built Lindo Wing, the pieces are titled simply *Lindo Wing, St Mary's Hospital*. Julian Opie is one of the most significant artists of his generation. His distilled style captures portraits and landscapes in a wide variety of media within an instantly recognisable manner. A student at Goldsmiths College during the 1980s, Opie has undertaken major public commissions throughout the capital including at Heathrow Terminal One. The Lindo Wing has been the location of high profile royal births spanning more than 40 years, including those of Princes William and Harry and the recent arrivals of Prince George and Princess Charlotte of Cambridge.

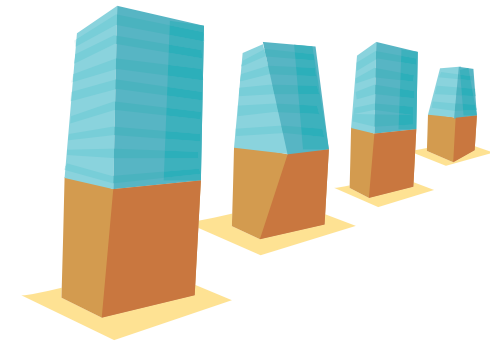
Continue along South Wharf Road eastwards until you reach the first pedestrian entrance to Paddington Basin.



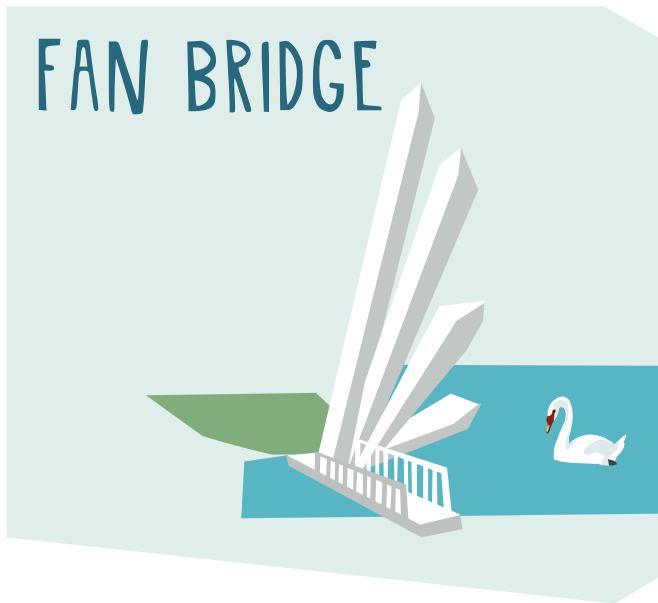
11

Danny Lane
Glass and CorTen steel
Unveiled September 2003
West End Quay, Paddington Basin

Keen to explore the interplay between his sculptures and the surrounding architecture, Danny Lane (b. USA 1955) intended *Lock Level Line* to reflect the changing levels of water within a lock. They are fabricated from stacked CorTen steel and layered glass. As part of the ongoing regeneration of Paddington Basin, the works were transported to site from Danny Lane's West London studio along the Grand Union Canal by barge. Danny Lane is an internationally acclaimed American artist whose principal medium is glass which he combines, through feats of design and engineering, with steel to produce seemingly simple and yet breath-taking and elegant designs. Recent important commissions include those undertaken for London's Victoria and Albert Museum and the National Assembly for Wales in Cardiff.



LOCK LEVEL LINE



12

Knight Architects & AKT II
Steel
Unveiled September 2014
Merchant Square, Paddington Basin

Fabricated in Yorkshire, the five steel beams which comprise *Fan Bridge* were fittingly transported to Paddington by barge. Now in situ at the head of Paddington Basin they form a highly engineered and yet elegant pedestrian bridge over the Grand Union Canal to provide a vital link between Sunset Terrace, Merchant Square, and the Praed Street area. Conceived by Buckinghamshire-based bridge specialists Knight Architects alongside structural engineers AKT II, the beams rise in sequence with a hydraulic action similar to the movement of a traditional Japanese fan. Ranging from six to seven tonnes each, the beams are balanced by a forty tonne counterweight which also reduces the energy required to move the structure. *Fan Bridge* was commissioned by European Land and unveiled in September 2014. Catch the amazing action as *Fan Bridge* is opened at noon on Wednesdays and Fridays and on Saturdays at 2pm.

SIR SIMON MILTON



13

Bruce Denny
Bronze
Unveiled 2014
Merchant Square, Paddington Basin

Sir Simon Milton (b. UK 1961-2011) was the leader of Westminster City Council from 2000 to 2008 during which time he was instrumental in plans to regenerate Paddington Basin. This seated life-size bronze statue, framed by the *Fan Bridge*, is situated in Merchant Square and was unveiled in September 2014 by The Right Honourable Eric Pickles MP. The sculptor, Bruce Denny (b. UK 1967) was a close friend of Sir Simon and used many of his personal photographs as inspiration for the statue. Denny also created a bust of Sir Simon, which was unveiled at Westminster City Hall in Victoria Street in March 2015. Based close to Windsor, Denny has undertaken various important public commissions throughout the capital including a bronze sculpture, *The Conversion of St Paul*, marking the 300th anniversary of St Paul's Cathedral, which now resides at St Paul's Church in Covent Garden.

Take a break at Sunset Terrace and watch the world's first Water Maze in action.

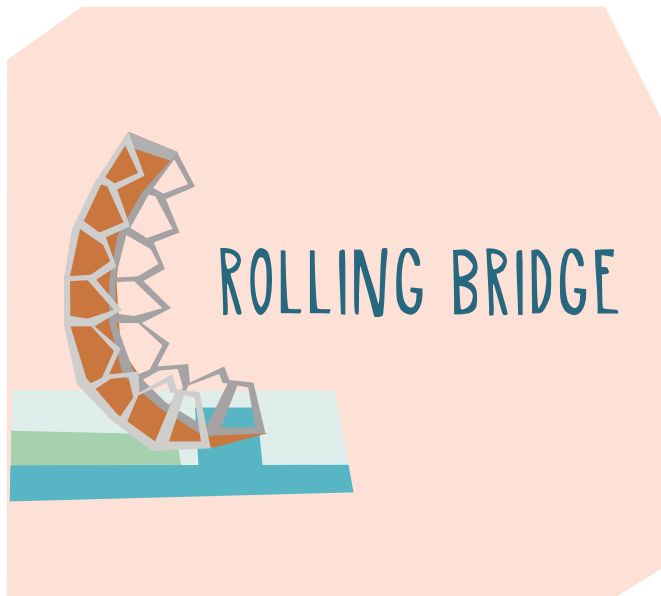


14

Robin Partington and Partners
Commissioned 2014
Merchant Square, Paddington Basin

One of the statues from the *Paddington Trail* in 2014, inspired by the handmade bricks which were commonly used in the capital's buildings until the early twentieth century, *Brick Bear's* design was the idea of Robin Partington and Partners, architects of Merchant Square. See if you can find Brick Bear in his new Merchant Square home, snug and dry even under the greyest London skies. Treat yourself to elevenses or even afternoon tea with a marmalade sandwich when you find him.

Continue along the towpath away from the head of Paddington Basin.



15

Heatherwick Studio
Steel
Completed 2004
Paddington Basin

Aiming to make the movement of the bridge extraordinary, London-based designer Thomas Heatherwick CBE (b. UK 1970) conceived a proposal to create a rolling structure; comprising eight triangular sections the bridge really does roll back on itself as it opens, forming an octagonal construction on one side of the towpath. Celebrated for innovative design solutions, Heatherwick established his King's Cross studio in 1994 and has undertaken important commissions including the *Olympic Cauldron* in 2012 for the London Olympics. *Rolling Bridge* was completed in 2004 and spans an inlet of the Grand Union Canal at Paddington Basin. Awarded *The British Structural Steel Award* in 2005, the bridge rolls up for audiences each Wednesday and Friday at noon and on Saturdays at 2pm.

From the footbridge to St Mary's Hospital pause and take in Ron Haselden's illuminated piece.



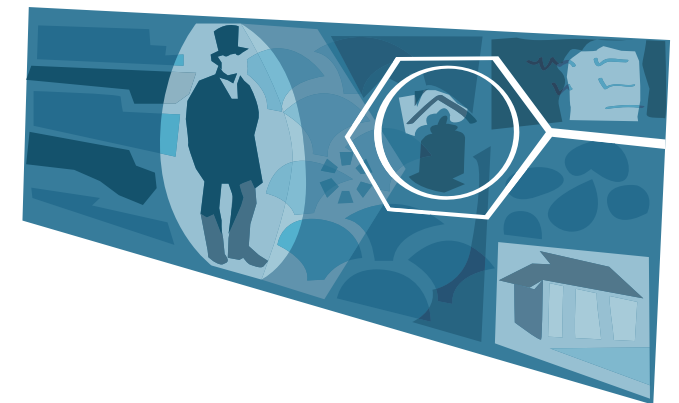
16

Ron Haselden
Glass panels with LED lighting
Commissioned 2012
Canalside exterior of QEQM Wing, St Mary's Hospital

Based on a drawing by a St Mary's Hospital paediatric patient attending the hospital's school, *Basketball* is a vibrant 12 metre high installation which celebrates the 2012 Olympic and Paralympic Games. Animating the exterior wall of the hospital, the piece shows a girl jumping into the air and scoring a basketball hoop, each stage of which is lit in sequence. Ron Haselden (b. UK 1944) studied sculpture at Edinburgh College of Art during the 1960s, later gaining the prestigious Sargent Fellowship to study further at the British School at Rome. Now based in London and France he is celebrated for monumental light installation works. *Basketball* was commissioned by Art Lights London, in July 2012, in collaboration with Imperial College Healthcare Charity, with support from the Arts Council England and the Abbey Harris Mural Fund; the work is within the collection of Imperial College Healthcare Charity.

Leave the canalside and cross North Wharf Road to Hermitage Street. At the end you will be able to cross Harrow Road and pass beneath the Westway.

BRUNEL MURAL



17

Robert Dawson
Ceramic tiles / Unveiled 2014
Below the Westway, Harrow Road

Seeking to reflect the rich heritage of Paddington alongside the continual process of regeneration and change within the area, this 2,000 plus ceramic tile *Brunel Mural* was commissioned in 2013 and is by designer Robert Dawson (b. UK 1953). The design, created in consultation with local residents and organisations, depicts an image of Isambard Kingdom Brunel which combines geometric patterns based on the forthcoming Crossrail station at Paddington. Robert Dawson studied at Camberwell School of Art and the Royal College of Art. He is renowned for his large scale public installations throughout the UK.

Turn right after crossing the road and head along Harrow Road towards Paddington Green.

SARAH SIDDONS

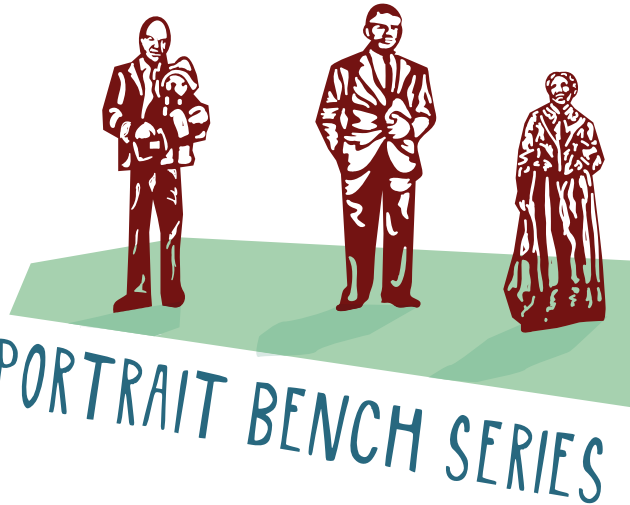


18

Léon-Joseph Chavalliaud
White marble
Unveiled 1897
Paddington Green

One of the most famous women of her day, Welsh born tragic actress Sarah Siddons (b. UK 1755 - 1831) was the idol of the London stage during the late eighteenth century. Almost 5,000 people attended her funeral and she is buried in nearby St Mary's Churchyard. This monumental white marble statue by Léon-Joseph Chavalliaud (b. France 1858 - 1919), sited at Paddington Green, was unveiled in 1897 by the prominent actor-manager Sir Henry Irving. Celebrated in particular for her performance as Shakespeare's Lady Macbeth, *Sarah Siddons* is shown here dagger in hand with the mask of tragedy underneath her chair. The sculpture overall is based on the composition of Sir Joshua Reynolds's 1784 portrait titled *Mrs Siddons as the Tragic Muse*. Another statue of Sarah Siddons by Thomas Campbell, commissioned at the instigation of Charles Dickens in 1831, is located in St Andrew's Chapel, Westminster Abbey. The Sarah Siddons Society was founded in Chicago in 1952 and presents awards in recognition of outstanding stage performances. Previous recipients include Bette Davis, Deborah Kerr and Julie Andrews.

Follow your tracks back along Harrow Road past St Mary's Church.



19

Sustrans Art Team
CorTen Steel
Unveiled 2013
St Mary's, Paddington Green

Part of the *Sustrans' Portrait Bench series*, two-dimensional CorTen steel sculptures of local heroes were installed at St Mary's Paddington Green during 2013 following a vote by local residents. The life-size works capture celebrated nurse Mary Seacole, code breaker Alan Turing and Paddington Bear author Michael Bond. Designed in house by the Sustrans Art Team, the *Sustrans' Portrait Bench series* is a national social history project which celebrates the uniqueness of each location. There are over 250 portraits throughout the UK, all accompanied by a bench, making them the perfect place to unwind and relax. The works at Paddington were installed to coincide with the completion of the surface level crossing below the Westway and a new cycle route connecting St Mary's Terrace with Paddington Basin and Paddington Station.

Continue walking along Harrow Road north of the Westway and use the Porteus Road Underpass by artist Peter Fink and architect Igor Marko, then take the silver footbridge over the canal to Sheldon Square.

TWO FIGURES



20

Sean Henry
Painted bronze
Commissioned 2003
Canalside, Paddington Central

Providing the perfect opportunity for a creative selfie, *Two Figures* by British sculptor Sean Henry (b. UK 1965) readily capture the attention of those passing by. Set apart by several metres, suggesting an unseen narrative, both pieces are large scale bronze works. The surfaces are painted in oil to convey natural and living figures, a combined technique which revives the tradition of multicolour sculpture, prevalent within ancient sculpture through to the Renaissance in Europe. Sean Henry studied in Farnham and Bristol during the 1980s before undertaking a role as Visiting Artist at the University of California; he was awarded the prestigious Villiers David Prize in 1998. Recent public projects in the UK include a display for Salisbury Cathedral and an off coast installation in Northumberland.

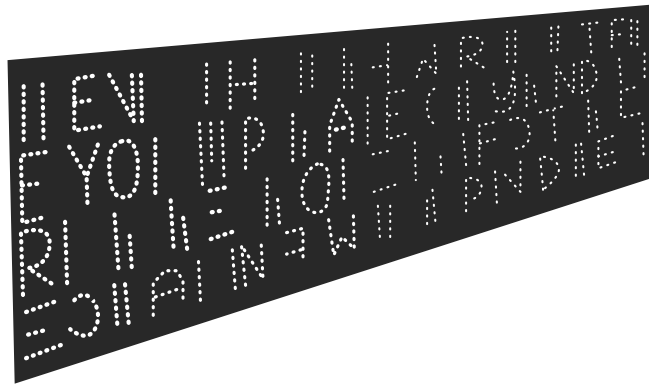


21

Commissioned 2014
Sheldon Square, Paddington Central

Bold and bright against the surrounding buildings, amphitheatre and canal side, *Bearing Up* is irresistible in colour and touch. Beautifully blue to represent the nearby Grand Union Canal, the flock surface of this bear is soft and gentle, go on, give him a stroke! This Paddington formed part of the *Paddington Trail* in 2014, and now lives in Paddington Central's Sheldon Square permanently.

MESSAGE FROM AN UNSEEN WORLD



22

United Visual Artists with an original poem by Nick Drake
Anodised aluminium, LED, code
Commissioned 2016
Beneath Bishop's Bridge Road, canalside,
Paddington Central

Alan Turing (b. Paddington, UK 1912-1954) is considered to be a founding father of computer science, and along with Newton and Darwin is listed as one of Britain's greatest scientists. United Visual Artists' approach to design leans heavily on computational principles, and with 'Message from the Unseen World' UVA means to create an homage to Turing. Engraved on to the front face of the artwork is an encoded version of extracts from his groundbreaking text 'Computing Machinery and Intelligence', first published in 1950. Within the artwork lives a poem by Nick Drake, inspired by Turing's work and life that in turn is interpreted by the computer. 'Message from the Unseen World' is a literal in memoriam for Turing, a dynamic artwork; a machine trying to write like a poet, whilst thinking like a machine.



Visit thispaddington.com/public-art-trail to follow the Public Art Trail on your phone or tablet.

Visit thispaddington.com for more information about other trails, events, places to eat and things to do in Paddington.

© The Paddington Partnership and Londonist, September 2016.

PADDINGTON™ and PADDINGTON BEAR™
© Paddington and Company Limited/Studiocanal S.A. 2015
Paddington Bear™, Paddington™ and PB™
are trademarks of Paddington and Company Limited
Licensed on behalf of Studiocanal S.A. by Copyrights Group.