

# Bee Hive Supplies



Bee Hive Supplies is based in Cornwall and is the choice for British National poly hives and beekeeping supplies. We provide high quality, affordable beekeeping equipment, clothing and accessories with an unbeatable service.

Our high density (100g/litre) polystyrene beehives are manufactured in the UK and were designed, developed and tested in the UK by beekeepers for beekeepers. The very thick insulated gabled roof has 100mm/4" of solid insulation, while our woven stainless steel open mesh floor is 150mm/6" thick providing excellent insulation and in the majority of cases does not need a hive stand. The roof and floor combined with a minimum of

35mm/1.5" thick solid polystyrene walls will keep your bees dry and snug in the harshest of conditions with a constant temperature throughout the summer.

Our full sized British National poly hives take 11 standard or 12 Hoffman self spacing frames. Our experience has shown that the extra warmth and insulation provided by the thick polystyrene walls, roof and floor, means the queen should lay a larger brood nest, laying across all 11 frames. As we only supply full sized hives a 12th Hoffman frame can be added to increase the area available for brood rearing.

For more information please read our Polystyrene Beehives Key Facts document.

**FREE DELIVERY ON ORDERS OVER £175!**

## British National Polystyrene Hives

Our British National beehives were designed, developed and are manufactured in the UK from high density (100g/l) polystyrene. They have the weight and feel of a wooden hive, but with the added advantages of significantly improved insulation and waterproofing making them ideally suited for beekeeping in the UK.

The innovative gabled roof has 4"/100mm of solid polystyrene insulation providing excellent insulation, and with supported ends allows hives to be stacked for transport or inverted and used as a base during inspections

All our beehives are all supplied with a stainless steel woven wire open mesh floor as standard. The floors all have an integral landing ramp and solid polystyrene built in feet keeping the base of the hive 6"/150mm off the ground, allowing good air circulation and often not requiring an additional hive stand.

The walls have deep secure handles and a minimum of 1.5"/35mm of insulation on all sides, combined with the solid thick roof and deep floor make them one of the most highly insulated beehives available on the market today.



### Jumbo (14x12) National Hive

This is the hive recommended by the beekeepers at Bee Hive Supplies. The larger jumbo or 14x12 brood box is better suited to the more vigorous hybrid bee common in the UK, it allows quicker, easier and less intrusive inspections than using the brood and a half system, and is more cost effective.

The empty hive package includes a thick insulated gabled roof, with open mesh floor, a jumbo (14x12) brood box, 5 metre hive strap, varroa inspection tray, entrance reducer and inner cover.

The complete hive package also includes a harmless plastic queen excluder, and 11 Hoffman spaced frames and wired foundation per lift.

<b>Jumbo Hive with no supers</b>	<b>Empty £97</b>	<b>Complete £150</b>
<b>Jumbo Hive with 1 super</b>	<b>Empty £119.50</b>	<b>Complete £197.50</b>
<b>Jumbo Hive with 2 supers</b>	<b>Empty £142</b>	<b>Complete £220</b>
<b>Jumbo Hive with 3 supers</b>	<b>Empty £164.50</b>	<b>Complete £267.50</b>

## Clothing Sizing Information

### Glove Sizing

To determine your glove size measure around the fullest part of your palm (not including your thumb) in inches, and round up to the nearest inch this is your glove size.

Rubber beekeeping gloves should be a close fit, therefore if you are an intermediate measurement, you may wish to round down and use gloves a size smaller than your usual glove size. However, you will be sacrificing some comfort for increased dexterity and feel.



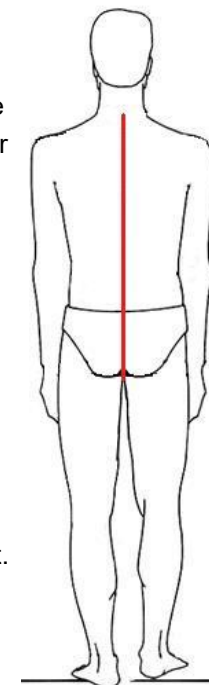
Glove Size	7	8	9	10	11
Leather glove size (approx)	-	-	L	XL	XXL
Rubber glove size	7	8	9	10	-

### One Piece Coverall Sizing

The coveralls we sell are loose fitting around the chest and waist for comfort and ease of movement. There is an adjustable elastic waistband, which can be tightened to suit the individual beekeeper as required. The critical measurement for the fit of the coveralls is back length, if this is too short the suit will be tight across the shoulders and the crotch, too long and the suit will hang down and may restrict movement.

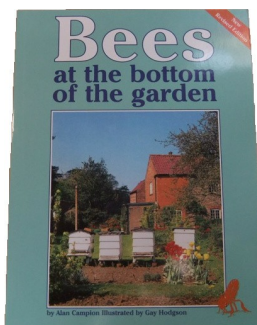
To measure your back length, measure from the nape of your neck (the bony lump at the top of your back), down your back, to a point in between your legs where the seams on a pair of trousers would meet.

The sizes given in the chart below are the maximum size, which that suit will fit, if you are close to or at the maximum, you may wish to choose the next size up for a looser fitting suit. However, should your style of beekeeping involve driving between apiaries or collecting difficult swarms from trees or up ladders, you may wish a closer fitting suit.



Maximum back length (inches)	26"	27"	29"	34"	37"
------------------------------	-----	-----	-----	-----	-----

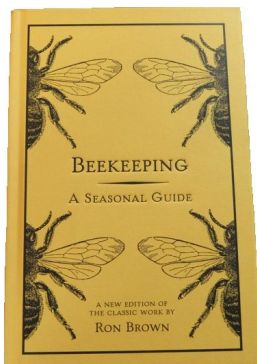
## Beekeeping Books



**Bees at the bottom of the garden** 110 pages

**By Alan Campion £9.95**

Beekeeping is a hobby any interested amateur could explore – that's the message of this book, which aims to take the mystique out of keeping bees. Alan Campion uses his own experience to describe in plain terms how to go about setting up a hive, what to do during the first few years and what to expect from your bees.



**Beekeeping a Seasonal Guide** 189 pages

**By Ron Brown £16.99**

A charming and practical guide to accompany the beekeeper through each season of the beekeeping year. In depth but simple instructions for all the techniques you need, from choosing and siting you hive to controlling swarms, rearing queens and, of course, harvesting the tastiest honey. Packed with expert advice for beekeepers of all levels, whether you are just starting out or an experienced apiarist wishing to develop your skills.



## Deep National Hive

This is also known as the standard depth brood box, it can be used with strains of bees requiring less brood area. Although many UK hybrid bees may require the addition of a super to use the brood and a half system,

The empty hive package includes a thick insulated gabled roof, with open mesh floor, a deep brood box, 5 metre hive strap, varroa inspection tray, entrance reducer and inner cover.

The complete hive package also includes a harmless plastic queen excluder, and 11 Hoffman spaced frames and wired foundation per lift.

<b>Deep Hive with no supers</b>	<b>Empty £85</b>	<b>Complete £125</b>
<b>Deep Hive with 1 super</b>	<b>Empty £107.50</b>	<b>Complete £172.50</b>
<b>Deep Hive with 2 supers</b>	<b>Empty £130</b>	<b>Complete £220</b>
<b>Deep Hive with 3 supers</b>	<b>Empty £152.50</b>	<b>Complete £267.50</b>



## Double Brood National Hive

The double brood box system is ideally suited for certain queen rearing techniques and other more advanced manipulations. Or can be used with an exceptionally vigorous queen where a larger brood area is required.

The empty hive package includes a thick insulated gabled roof, with open mesh floor, two deep brood boxes, 5 metre hive strap, varroa inspection tray, entrance reducer and inner cover.

The complete hive package also includes a harmless plastic queen excluder, and 11 Hoffman spaced frames and wired foundation per lift.

<b>Double Brood Hive with no supers</b>	<b>Empty £104</b>	<b>Complete £170</b>
<b>Double Brood Hive with 1 super</b>	<b>Empty £126.50</b>	<b>Complete £217.50</b>
<b>Double Brood Hive with 2 supers</b>	<b>Empty £149</b>	<b>Complete £245</b>
<b>Double Brood Hive with 3 supers</b>	<b>Empty £171.50</b>	<b>Complete £292.50</b>



## Beginners Kits



At Bee Hive Supplies our aim is to supply people starting in beekeeping with the right equipment first time. The kit includes a complete hive comprising: roof, open mesh floor, brood box, supers, harmless plastic queen excluder, 11 Hoffman self spacing frames and foundation per lift, 5m hive strap, varroa tray, entrance block and inner cover. With a high quality one piece cotton coverall with integral veil, rubber beekeeping gloves and wrist gauntlets, a 2.5 litre rapid feeder, a stainless steel J type hive tool, and a full sized stainless steel smoker complete with a bag of smoker

fuel as standard. The beekeeping book which accompanies the kit, "A practical manual of beekeeping" by David Cramp was chosen from a large selection because it is well written, detailed, easy to understand, without assuming prior knowledge of beekeeping techniques.

Our very thick insulated gabled roof provides 100mm/4" of solid insulation in the centre keeping your bees warm even in the coldest of conditions, and keeping the temperature constant throughout the summer. Our woven stainless steel open mesh floor is 150mm/6" thick providing excellent insulation and in the majority of cases does not need a hive stand. The roof and floor combined with a minimum of 35mm/1.5" thick solid polystyrene walls will keep your bees dry and snug in the harshest of conditions.

When ordering please specify the glove and suit size you require. For details of our suit and glove sizes please see our clothing sizing information

For beginners kits we recommend a minimum of 2 supers with the hive.

<b>Beginners kit with no supers</b>	<b>Deep hive £225</b>	<b>Jumbo hive £250</b>
<b>Beginners kit with 1 super</b>	<b>Deep hive £272.50</b>	<b>Jumbo hive £297.50</b>
<b>Beginners kit with 2 supers</b>	<b>Deep hive £320</b>	<b>Jumbo hive £345</b>
<b>Beginners kit with 3 supers</b>	<b>Deep hive £367.50</b>	<b>Jumbo hive £392.50</b>

**A beginners kit is also available without a complete hive for £115**

## Beekeeping Books

### **Teach Yourself: Get Started in Beekeeping 213 pages** **By Adrian Waring and Claire Waring £11.99**

Get Started in Beekeeping is the ultimate guide to setting up and maintaining your colonies, with practical advice on all aspects of beekeeping. With tips and information on bee biology, collecting honey and running hives in every location and season, this is essential reading for any beginner.

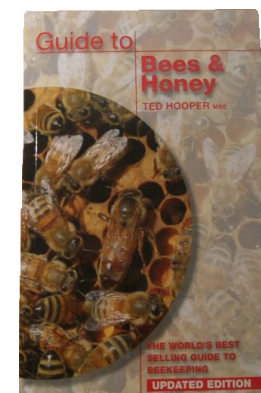


### **Guide to Bees & Honey 264 pages** **By Ted Hooper MBE £12.99**

The world best selling guide to beekeeping.

The ideal guide for anyone wanting to start beekeeping and a revered reference book for experienced beekeepers. Information on all you need to know, including how to avoid swarms, plan requeening, or provide the colony with winter stores.

Updated to include key information on Varroa

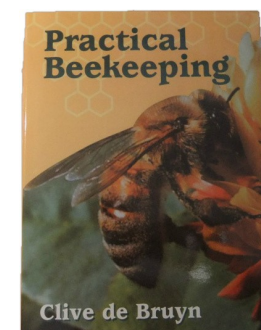


### **Practical Beekeeping 285 pages** **By Clive de Brun £23.95**

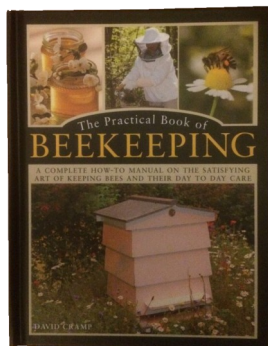
Practical Beekeeping is the comprehensive guide to the bee and its management, by an internationally recognised authority on the subject.

Topics covered in the book include: The bee and its environment; Hives and other equipment; Colony management; Dealing with the crop.

Profusely illustrated with photographs and specially commissioned line illustrations, this book will be an invaluable addition to the bookshelf of anyone involved in beekeeping.



## Beekeeping Books



### The Practical Book of Beekeeping

160 Pages

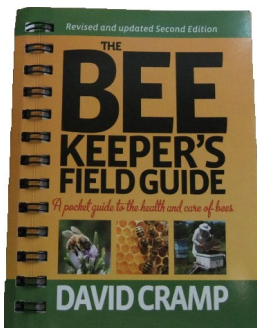
**By David Cramp £10.00**

An expert step-by-step guide to beekeeping, from setting up to hive management and harvesting, with 400 photographs.

Guides you all the way from choosing and obtaining your bees, housing them and maintaining the hive through the year, to dealing with pests and diseases, and harvesting the honey.

Describes the flowers, plants, trees and crops - and their seasons - that provide the best yields of nectar and pollen.

Illustrated throughout including step-by-step techniques and amazing pictures from inside the hive.



### The Beekeepers Field Guide 255 pages

**By David Cramp £15.99**

This guide is designed for beekeepers to carry with them to use in the apiary and out in the field. It is a diagnostic tool and an aide memoire for the hobbyist and for the professional beekeeper, who may know what to do but will at times need the information close to hand. The second and revised edition to this fully illustrated and handy guide to the apiary brings the science and craft of beekeeping to beekeepers right where they need it – in the field with the bees.

## Hive Parts

### Insulated Gabled Roof £38

Highly insulated roof, supported gable end design allowing the roof to be inverted to stack the hive during inspections or allow hives to be stacked during transport.

### Open Mesh Floor £38

Open mesh floor for improved ventilation and varroa control. Deep base with built in feet and handhold recess for easy carrying. Includes varroa tray and entrance reducer.

### Insulated Roof and Open Mesh Floor £70

Includes insulated gabled roof, open mesh floor, varroa tray, entrance reducer, inner cover and a hive strap.

### Beehive lifts

Insulated beehive lifts with deep handhold recesses and plastic frame runners.

Complete includes 11 Hoffman self spacing frames and wired foundation.

**Super Empty £30 Complete £57**

**Deep Brood Empty £32 Complete £70**

**Jumbo (14x12) Empty £42 Complete £80**

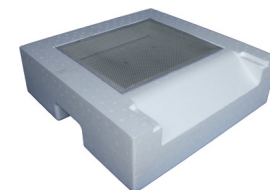
### Entrance Reducer £2.50

Unique design of entrance reducer allowing variable opening size by gradually sliding out, or reversing to close the entrance. For use with our polystyrene floors.

**Frame Runners (Pair) £2.00** Replacement runners for our poly hives.

**Varroa Tray £2.75** Replacement varroa tray for our poly floors.

**Inner Cover £4.00** Replacement/spare cover for our poly hives.



## Feeders

### Frame Feeders - British National Sizes

Bag type frame feeders, manufactured from a specialist textured plastic which allows the bees to climb the sides even when wet with sugar solution.



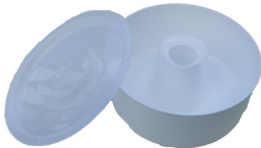
Ideal for use in nucs for queen rearing, as they can be removed once the nuc has become established allowing the addition of an extra frame. For smaller 2 or 3 frame nucs these allow the feed to be placed directly beside the in use frames.

They can also be used with dry sugar in winter for emergency feeding.

Supplied with wooden top bar and float.

**Deep National Size      £4**

**14x12 Size                £4**



### **2.5 Litre Rapid Feeder £7.00**

2,5 litre capacity rapid feeder, easy to use and top up without fully opening the hive.

## Beekeeping Clothing

**Clothing Sizing:** For details of our clothing sizes and how to measure please refer to our clothing sizing chart, Please ensure you specify which sizes you require when ordering

### **Beekeeper Smock £27.50**

Lightweight beekeeping jacket with removable sheriff veil. Ideal for occasions when a full coverall is not required.

Sizes: Extra Large, Extra Extra Large



## Beekeeping Clothing

**Clothing Sizing:** For details of our clothing sizes and how to measure please refer to our clothing sizing chart, Please ensure you specify which sizes you require when ordering



### **Special Offer: Suit, Gloves and Gauntlets £75**

Comprising our high quality one piece cotton coverall with integral zip off astronaut hood, rubber beekeepers gloves and wrist gauntlets to cover the gap between glove and suit.

Coverall Sizes: Back Length: 26", 27", 29", 34", 37"

Glove Size: 7, 8, 9, 10

### **One Piece Coverall with Veil £70**

High quality cotton one piece coverall, with detachable ventilated astronaut hood. Double thickness shoulders and upper arms for increased sting protection, large pockets, elasticated waist and reinforced knees.

Coverall Sizes: Back Length: 26", 27", 29", 34", 37"



### **Rubber Beekeepers Gloves £7.50**

Rubber beekeeping gloves offering a combination of superb feel and dexterity with excellent sting resistance. These can be washed and sterilised between inspections maintaining good hygiene and husbandry standards. Cotton lined for comfort. These are recommended to be used with wrist gauntlets.

Glove Size: 7, 8, 9, 10



### **Wrist Gauntlets £4.50**

Used to cover the gap between glove and suit when wearing gloves without an integral cuff.

## Wooden Beehive Frames

These frames have the wider 1 1/8" (28mm) top bar to help reduce brace comb (standard top bars are 7/8" wide). The side bars are both slotted to accept pre-wired foundation and also pre-drilled for wiring, to allow the use of unwired foundation or for foundationless beekeeping methods. (Sold in Packs of 10)

### **Hoffman Super Frames £14**

### **Hoffman Brood Frames £16**

### **Hoffman Jumbo (14x12) Frames £18**

### **Gimp pins/ frame nails**

1mm x 19mm Gimp pins/Frame nails. These thin yet strong used for the assembly of wooden beehive frames, 11 pins are used in the assembly of each frame.

**500g box (approx 3300) £15**

**100g bag (approx 650) £5**

### **Spur Embedder £5.50**

For embedding wires into foundation or into starter strips when using foundationless beekeeping techniques.

### **Stainless steel wire spool £5**

250g Spool of stainless steel wire for frame wiring.

All our premium frames come pre-drilled for wiring as well as recessed to wired foundation.



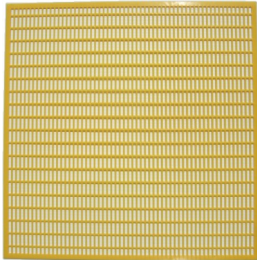


## Tools and Equipment



### **Hive Strap £5.00**

Durable 5m hive strap with metal cambuckle allowing easy operation whilst wearing beekeeping gloves, ensuring hives are held tightly together.



### **Plastic Queen Excluder £7.50**

Plastic moulded queen excluder 460mm x 460mm. This excluder will also fit any standard wooden British National hive.



### **UHU Por Polystyrene Impact Adhesive £3.76**

Recommended glue for polystyrene and foam products. Please note all our beehives and hive parts are supplied with sufficient adhesive for assembly.



### **Swarm catcher £25**

Cloth swarm catcher with a tied bottom, allowing easier removal and trapping of hanging swarms, without the need for ladders or climbing trees. The swarm catcher needs to be fastened to a telescopic or suitable length pole (not included).



### **Wasp trap £8**

Large wasp trap to help protect your bees or your picnic. When filling ensure that it contains some alcoholic drink as the smell will deter bees from entering.

## Queen Rearing Equipment

### **Queen rearing hair roller cage (10) £3.80**

10 hair roller type queen bee rearing cages, allowing the virgin queen to emerge and remain trapped within the cage preventing fighting between multiple emerging queens. To be used with queen rearing cup holders or natural queen cell holders.



### **Queen rearing support blocks (10) £3.50**

10 support blocks allowing queen rearing cup holders or natural queen cell holders to be fixed to a frame within a queen less colony for raising the queens and drawing of the queen cells.



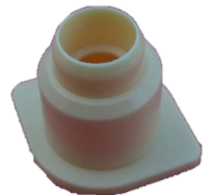
### **Natural queen cell holders (10) £4.75**

10 holders for naturally raised queen cells allowing them to be transferred to a queen less cell raising colony.



### **Queen rearing cell cup holders (10) £3.50**

10 queen rearing cell cup holders. Used to fit the cell cups onto a support block fixed to a frame within a queen less colony for raising the queens and drawing of the queen cells.



### **Queen rearing cell cups (10) £1.00**

10 queen rearing cell cups for use with grafted larvae or caging the queen with cell transfer systems. To be used with queen rearing cup holders.





## Queen Rearing Equipment



### **Natural queen cell rearing kit (10) £8.00**

10 sets of parts to raise and hatch queens from naturally formed queen cells. Containing support blocks, natural queen cell holders and hair roller cages.

These queen cells can be produced where a frame of fresh eggs and larvae is removed from the donor colony and placed horizontally above the frames of a queen less cell raising colony. This will induce the bees to draw out queen cells and raise queens, which once capped, can be cut from this frame and placed within the holder.

Alternatively, the queen cells can be from where the bees have raised their own queens as part of the swarming cycle or through queen replacement.

The support blocks are fixed to a modified frame with one or more horizontal bars for queen cell raising. Once the capped queen cells have been placed within the holders, these are fitted with a hair roller cage and then fixed onto the support blocks before they are returned to a colony to emerge.



### **Queen rearing kit (10) £8.00**

10 sets of parts to raise and hatch queens from grafted larvae or caged queen cell transfer systems. Containing support blocks, cup holders, cell cups and hair roller cages.

The support blocks are fixed to a modified frame with one or more horizontal bars for queen cell raising. Larvae are grafted into the cell cups or the cups transferred from a caged queen system, the cups are placed into the cup holders and fitted to the support blocks. The frame is then placed within a queen less cell raising colony until the queen cells are capped, when they are fitted with hair roller cages and returned to a colony for the virgins to hatch.

## Tools and Equipment

### **J Type Bee Tool £9.50**

Shaped bee tool with a scraper on one end and a J shape for frame lifting on the other.

### **Standard Bee Tool £8.50**

Angled bee tool for separating and lifting frames

### **Large Stainless Steel Smoker £30**

Large stainless steel smoker with wire guard to prevent accidental burns, dimensions 4"x7" (excluding nozzle).

### **Extra Large Stainless Steel Smoker £40**

Extra large stainless steel smoker with guard for use by those with a larger number of hives to inspect, or whilst demonstrating and needing a smoker to burn for a longer period, dimensions 4"x10" (excluding nozzle).

### **Horse Hair Bee Brush £4.50**

Large soft bee brush for gently brushing bees from frames or for use in swarm collection.

### **Frame Grips £7.50**

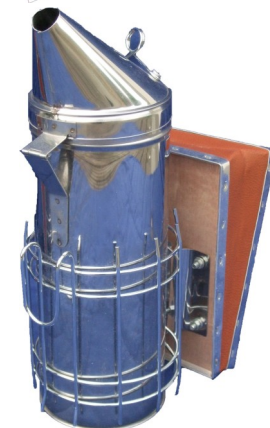
Spring loaded frame grips with integral frame tool for separating and lifting frames with one hand. Helps to reduce the possibility of squashing any bees when removing frames from the hive.

### **Queen Excluder Cleaner £11.50**

Specially shaped queen excluder scraping tool, allowing easier cleaning, and the removal of wax and propolis from between the bars of the queen excluder.

### **Frame Cleaner £6.00**

Used for removing propolis and wax from frames and removing wax from the side bar grooves when re-waxing old frames.



## Honey Extraction



### Stainless Steel Manual Extractors

Stainless steel extractors with legs, enclosed gears and nylon honey valve.

**3 Frame Extractor £225**

**9 Frame Radial/3 Frame Tangential Extractor £350**

### Laser Cut Uncapping Fork £14.50



This very strong and hard wearing uncapping fork has accurately spaced laser cut tynes, for easy uncapping, and a sharp cutter edge for uncapping in comb hollows.

### Uncapping Knife £12.50



Serrated stainless steel angled uncapping knife, for easy uncapping of frames.

### Uncapping Fork £5.00



Plastic uncapping fork with angled stainless steel needles for ease of use.

### Uncapping Roller £10.50



A simple and easy way to uncap your frames. Simply roll the spiked roller over your frame, the spikes pierce the capping but don't remove them. The frames are then extracted as usual and any small bits of wax cappings are easily filtered out.



### 26 Litre Honey Bucket With Honey Valve £25

26 litre (approx 70lb) honey bucket complete with 5cm nylon honey valve.

## Queen Rearing Equipment

### One handed queen marking cage £6.50

An easy solution to the problem of catching and marking queens quickly and efficiently. The queen is manoeuvred into the main chamber, the cage can be closed with one finger, and the plunger gently pushed up with the thumb to enable the queen to be easily marked.



This can all be completed with one hand leaving the other free to hold the frame or marking pen.

### Plunger queen marking cage £4.00

Plunger type queen marking cage for colour marking queens with the correct colour for the year. The queen is introduced to the cage, the plunger is then pressed holding the queen gently against the foam pad, allowing her to be marked through the plastic mesh.



### Queen Marking Cage £2.50

Plastic press in queen marking cage for holding the queen whilst marking.



### Queen Marking Pen £4.50

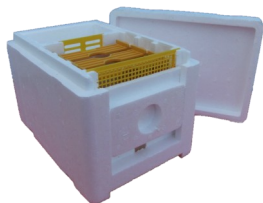
Coloured paint pens for queen marking.

Please specify which colour you require when ordering.

Colours: Green (2019), Blue (2020),  
White (2021), Yellow (2022), Red (2023)



## Queen Rearing Equipment



### **Mini mating nuc £16.50 each or £150 per 10**

Mini polystyrene mating nucs can be used for mating queens with only a handful of bees rather than taking a full sized nuc of bees out of honey production for rearing queens.

This mating nuc features a sliding front panel covering a ventilation mesh or the entrance to allow the nuc to be easily moved to the mating apiary. There is a feeding section at the rear which is segregated by a queen excluder.



### **Stainless steel queen catcher clip £5.00**

Squeeze the clip to open it then place over the comb to catch the queen. Any workers can escape via the slots in the side. This can be used to move the queen or keep her safely during some manipulations.



### **Queen Introduction Cage £2.50**

Plastic queen introduction cage for confining a queen when introducing a new queen to a colony.



### **Entrance Disc £1.00**

Plastic entrance disc for use with hives and nucs. Can be set to 1 of 4 positions. 1:Fully open, 2:Open with queen excluder, 3:Closed with ventilation, 4:Completely closed.



### **Plastic Queen Cells (pack of 10) £3.00**

Plastic queen cells. Sold in packs of 10. Please note these queen cells are for direct cell building and are not compatible with the other queen cells/cages etc we sell.

## Honey Extraction

### **Uncapping tray and frame rack £155**

This large uncapping tray has sturdy supports to hold the frame during uncapping and a straining base to the top tray to catch cappings and allow the honey to drain into the sump below. The integral high capacity honey sump will easily hold the cappings honey from a very large number of supers. When full the honey sump can be easily drained via a standard honey gate valve through a sieve directly into your honey buckets without the need for any additional processing.

The frame rack will enable you to empty the frames out of your supers before uncapping, allowing you to uncap and extract in one operation, speeding up the whole process of extraction.



### **Stainless Steel Double Honey Sieve £18**

Stainless steel double (coarse and fine) honey sieve for removing dirt and other particles from honey after extraction.



### **Fine (700 micron) Nylon Honey Filter £13.50**

### **Ultra fine (200 micron) nylon honey filter £13.50**

45cm fine honey filter, made from nylon mesh with metal ring to maintain shape whilst in use. It will fit over the top of most honey buckets or from a stand when filtering honey.



## Honey Extraction

### Manual Refractometer £40



Hand held manual refractometer for determining the moisture content of honey before bottling. Manual refractometers require calibration to ensure their continued accuracy. Calibration oils can be purchased from scientific supply companies, however, extra virgin olive oil has a refractive index of 71-72 Brix. Calibration to 71.5 Brix using extra virgin oil is sufficiently accurate for the purposes of determining the moisture content of honey prior to bottling.

### 8 Way Bee Escape £3.76



8 way bee escape will clear a super in 5-6 hours. It is important to remove the super once cleared to prevent the bees finding their way back to the honey. Approximately 26cm.10" in diameter, fix below a clearing board with nails or pins.

### Porter Bee Escape £1.00



Porter bee escape, for clearing supers before extraction.

## Queen Rearing Equipment

### Complete queen rearing system £60

This system is simple to use and an effective way to raise your own queens. The plastic cage is inserted into a cut out made into brood frame, the queen is caged for a day to enable her to lay up the plastic cups before she can be released. These cups can then be removed and set for development into queen cells in a suitably prepared colony.

Once developed and sealed the queen cells can be fitted into hair roller cages for incubation before distributing to colonies or mating nucs.



### Swiss style grafting tool £10.00

A highly effective grafting tool with a carefully angled head for precision transfer of larvae. Manufactured with a solid metal handle for improved grip and dexterity.

These are available in either left or right handed versions, please specify when ordering.



### Stainless Steel Grafting Tool £9.50

Double ended stainless steel grafting tool for use when grafting queen larvae.



### Stainless steel grafting tool with attached magnifying glass £10.50

Double ended stainless steel grafting tool for use when grafting queen larvae, including a clip on magnifying glass allowing the larvae to be seen more easily when grafting.



### Chinese Grafting Tool £3.00

Plastic grafting tool, with sliding plunger for use when grafting queen larvae.

