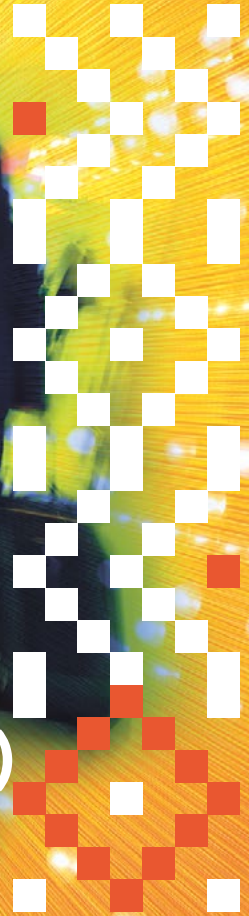




UNIVERSITY  
OF  
JOHANNESBURG

DEPARTMENT OF  
TRANSPORT AND SUPPLY  
CHAIN MANAGEMENT



# BCom Honours (Logistics Management) 2021

School of Management  
College of Business and Economics

The Future  
Reimagined



# BCOM HONOURS (LOGISTICS MANAGEMENT)

## PROGRAMME CO-ORDINATION

### DEPARTMENTAL CHAIRPERSON

**Dr N Pisa** • 011 559 4288 • D Ring 7, APK • [noleenp@uj.ac.za](mailto:noleenp@uj.ac.za)

### PROGRAMME MANAGER

**Dr PJ Kilbourn** • 011 559 2592 • D Ring 7, APK • [pkilbourn@uj.ac.za](mailto:pkilbourn@uj.ac.za)

### PROGRAMME CO-ORDINATOR

**Ms A Kasoojee** • 011 559 2464 • D Ring 721, APK • [adeelak@uj.ac.za](mailto:adeelak@uj.ac.za)

### ENQUIRIES: FACULTY

**Mr I Seeletse** • 011 559 2725/3919 • A Ring 1, APK • [iseeletse@uj.ac.za](mailto:iseeletse@uj.ac.za)

### ENQUIRIES: FINANCE

**Mr D Kalomo** • 011 559 3731 • A Ring 1, APK • [dkaloma@uj.ac.za](mailto:dkaloma@uj.ac.za)

**Department of Transport and Supply Chain Management**

**School of Management (SoM)**

**College of Business and Economics (CBE)**

**University of Johannesburg**

**Auckland Park Kingsway Campus (APK)**

**PO Box 524, Auckland Park 2006**

**Fax 011 559 2806**

**[www.uj.ac.za/transport](http://www.uj.ac.za/transport)**

**Applications will be accepted until October each year.**

---

## **1. GENERAL**

The Department of Transport and Supply Chain Management offers training in two fields for the degree:

- **BCom Honours (Logistics Management)**
- **BCom Honours (Transport Economics)**

After completion of an honours degree, advanced study may be undertaken in one of the following:

- **MCom / MPhil** (with the same endorsement as for honours).  
This is a dissertation on an approved subject under leadership of a study leader.
- A course based **MCom with specialisation in Supply Chain Management** is offered in the College.

The Department also provides the opportunity to obtain DCom and DPhil degrees in Logistics Management or Transport Economics, in which research is undertaken under guidance of a study leader appointed by the department.

## **2. COMPOSITION OF THE PROGRAMME**

The Honours programme has 17 modules. A learner should do at least 11 modules. A particular programme is assembled according to certain requirements. A number of compulsory modules are included in each programme and in some instances it is prescribed that modules or combinations of modules, must be completed in a specified order. The reason for this is to ensure the necessary frame of reference before continuing with the next modules.

The composition of the various modules are set out in paragraph 10. The nature of the various modules indicates a certain measure of flexibility, which inter alia manifests itself in the format of a task or assignment.

Lectures are all “after hours” depending on the choice of course. Lectures start at 17:10-19:00 and 19:10-21:00. Tests and exams are written during the day.

### 3. METHOD OF PRESENTATION

The following is valid for each of the modules:

**Class discussions:** at least seven meetings per module, following a set timetable.

**Test:** a written test of at least three hours, following a pre set timetable.

**Task or assignment:** varies from module to module.

**Examination:** a written paper of three hours during the official university examinations, following a pre set timetable.

### 4. SUCCESS CRITERIA

The pass mark for each module is 50%. The degree is awarded cum laude if the average mark of the 11 modules is at least 75%. The mark for each module consists of two equally weighted components, viz. the examination mark and the semester mark. A minimum semester mark of 40% is required for entry to the exam. The semester mark of each module is comprised of the test and the task/assignment, and also other possible components, and is elucidated in the learner guide for each module. The year module of Research Project has calculation criteria based on continuous assessment, the outcomes of which are stipulated in the learner guide for the module.

## 5. ENTRANCE REQUIREMENTS

**Please be advised that all applications are subject to a screening process. Applicants will be advised if they have been accepted.**

**The following minimum admission requirements apply for BCom Honours (Logistics Management)**

(a) BCom (Logistics Management) degree

OR

(b) Advanced Diploma (Logistics Management)

OR

(c) Any other BCom with a major with comparable content, and as far as is necessary, complemented by an entrance examination.

(d) Please be advised that academic performance in past qualifications will be taken into consideration.

AND

(e) Adequate English language proficiency.

(f) Learners who did not follow the standard prescribed courses during their undergraduate studies and who wish in the meantime to change their speciality field may be requested to follow a bridging course.

In the case of the before mentioned, the programme co-ordinators determine the necessity for entrance examinations in consultation with the departmental chairman for each prospective learner, taking into account academic background and performance, together with the practical experience of the prospective learner. If applicable, a candidate will be informed about this.

Admission to study is no guarantee of the successful completion of the programme. At the end of each semester each learner's continuation of studies is judged on the basis of the performance during the preceding examination.

## **6. STUDENTS FROM OTHER UNIVERSITIES**

All learners who attained their B degree at another university (or who have not been enrolled at the University of Johannesburg for more than 1 year) must complete the University of Johannesburg application form. The following must be included:

- A certified copy of the qualification (if already completed).
- A certified copy of an official academic record issued by the university.
- A statement from the university (or academic department) in respect of the content matter of subject courses that are indicated as pre-requisites e.g. Business Management 2A; Business Management 2B.
- Certified copies of identity documents/passports.
- SAQA verification for international students.

## **7. FURTHER INQUIRIES**

Further information and general inquiries may be addressed to the programme co-ordinator.

## 8. MODULES IN BCOM HONOURS (LOGISTICS MANAGEMENT)

The department reserves the right not to offer specific modules in a given year if insufficient demand exists for such modules.

### FULL-TIME CURRICULUM

#### MODULE INFORMATION **FIRST YEAR**

#### **FIRST SEMESTER**

<b>MODULES (COMPULSORY)</b>	<b>CODE</b>	<b>NQF CREDITS</b>
CONTEMPORARY ISSUES IN LOGISTICS MANAGEMENT	CIL8X01	12
LOGISTICS DECISION SUPPORT SYSTEMS	LMA8X03	12
THREE OF THE FOLLOWING (if a first semester module is taken, the matching second semester module is compulsory)		
INTRODUCTION TO AVIATION AND REGULATION	TRE8X13	12
INTRODUCTION TO SHIPPING AND MARITIME REGULATION	TRE8X11	12
ROAD FREIGHT TRANSPORT MANAGEMENT	TRE8X09	12
QUANTITATIVE MANAGEMENT TECHNIQUES IN LOGISTICS	LMA8X06	12
HUMANITARIAN LOGISTICS FRAMEWORK	LMA8X07	12
RAIL TRANSPORT MANAGEMENT	TRE8X07	12
<b>TOTAL</b>	<b>5 SEMESTER MODULES</b>	<b>60 CREDITS</b>

MODULE INFORMATION **FIRST YEAR****SECOND SEMESTER**

<b>MODULES</b>	<b>CODE</b>	<b>NQF CREDITS</b>
SUPPLY CHAIN MANAGEMENT	LMA8X02	12
LOGISTICS PROJECT MANAGEMENT	LMA8X08	12
THREE OF THE FOLLOWING (If a first semester module is taken, the matching second semester module is compulsory)		
AIRLINES AND AIRPORTS	TRE8X14	12
SHIPPING AND HARBOURS	TRE8X12	12
ROAD TRANSPORT COSTING AND DISTRIBUTION	TRE8X10	12
DEMAND PLANNING	LMA8X11	12
HUMANITARIAN LOGISTICS RESPONSE	LMA8X08	12
RAIL TRANSPORT ISSUES	TRE8X08	12
<b>TOTAL</b>	<b>5 SEMESTER MODULES</b>	<b>60 CREDITS</b>

**YEAR MODULE**

<b>MODULE</b>	<b>CODE</b>	<b>NQF CREDITS</b>
RESEARCH PROJECT: LOGISTICS MANAGEMENT	LMA8X12	30
<b>TOTAL</b>	<b>1 YEAR MODULE</b>	<b>30 CREDITS</b>



**PART-TIME CURRICULUM**MODULE INFORMATION **FIRST YEAR****FIRST SEMESTER**

MODULES	CODE	NQF CREDITS
CONTEMPORARY ISSUES IN LOGISTICS MANAGEMENT	CIL8X01	12
LOGISTICS DECISION SUPPORT SYSTEMS	LMA8X03	12
<b>TOTAL</b>	<b>2 SEMESTER MODULES</b>	<b>24 CREDITS</b>

**SECOND SEMESTER**

MODULES	CODE	NQF CREDITS
SUPPLY CHAIN MANAGEMENT	LMA8X02	12
LOGISTICS PROJECT MANAGEMENT	LMA8X05	12
<b>TOTAL</b>	<b>2 SEMESTER MODULES</b>	<b>24 CREDITS</b>

**YEAR MODULE**

MODULES	CODE	NQF CREDITS
RESEARCH PROJECT: LOGISTICS MANAGEMENT	LMA8X12	30
<b>TOTAL</b>	<b>1 YEAR MODULE</b>	<b>30 CREDITS</b>

**FULL-TIME CURRICULUM**MODULE INFORMATION **SECOND YEAR****FIRST SEMESTER**

MODULES	CODE	NQF CREDITS
THREE OF THE FOLLOWING (if a first semester module is taken, the matching second semester module is compulsory)		
INTRODUCTION TO AVIATION AND REGULATION	TRE8X13	12
INTRODUCTION TO SHIPPING AND MARITIME REGULATION	TRE8X11	12
ROAD FREIGHT TRANSPORT MANAGEMENT	TRE8X09	12
QUANTITATIVE MANAGEMENT TECHNIQUES IN LOGISTICS	LMA8X06	12
HUMANITARIAN LOGISTICS FRAMEWORK	LMA8X07	12
RAIL TRANSPORT MANAGEMENT	TRE8X07	12
<b>TOTAL</b>	<b>3 SEMESTER MODULES</b>	<b>36 CREDITS</b>

**SECOND SEMESTER**

<b>MODULES</b>	<b>CODE</b>	<b>NQF CREDITS</b>
THREE OF THE FOLLOWING (if a first semester module is taken, the matching second semester module is compulsory)		
AIRLINES AND AIRPORTS	TRE8X14	12
SHIPPING AND HARBOURS	TRE8X12	12
ROAD TRANSPORT COSTING AND DISTRIBUTION	TRE8X10	12
DEMAND PLANNING	LMA8X11	12
HUMANITARIAN LOGISTICS RESPONSE	LMA8X08	12
RAIL TRANSPORT ISSUES	TRE8X08	12
<b>TOTAL</b>	<b>3 SEMESTER MODULES</b>	<b>36 CREDITS</b>

## 9. CONTENT

### **Contemporary Issues in Logistics Management (CIL8X01)**

The purpose of this module is to equip students with knowledge of the nature and impact of pertinent modern day issues confronting logistics managers. This module will enable students to understand and reflect on the impact of modern day technological advances, key trends in logistics management and developments in sustainable logistics, logistics strategies and operations. The following study units are covered: Green operations and supply chain management, Design for the environment (DfE), Sustainable management strategies, Contemporary digital systems, contract logistics and city logistics.

### **Supply Chain Management (LMA8X02)**

The purpose of this module is to develop highly specialised applied competence enabling students to critically analyse and explain the principles and importance of supply chain management. To create an understanding of the way supply chain management impacts all areas of the business organisation and how businesses can improve their competitive positions by employing supply chain practices. The following topics are covered: Understanding supply chain management and related concepts, supply chain management vs. logistics management, supply chain business processes, supply chain models, supply chain structures, purchasing issues in supply chain management, operations issues in supply chain management, distribution issues in supply chain management and co-ordination and technology in the supply chain.

### **Logistics Decision Support Systems (LMA8X03)**

This module focuses on the role and importance of logistics decision support systems, and information technology in logistics. Emphasis is placed on the various types of information systems as well as their respective functions. The following topics are covered: Information for

supply chain management, introduction to logistics decision support systems, collaborative ERP, e-commerce and integration, advance planning and scheduling, supplier relationship management and a practical demonstration.

### **Logistics Project Management (LMA8X05)**

The purpose of this module is to introduce the student to the objectives and principles of project management. Prepare the student to acquire and apply the necessary technical skills to interpret and design a project management system on a highly advanced level and to reflect on the specialised applications made. Develop the students' intellectual competency to be able to analyse, transform and critically evaluate new information on various aspects of project management in a range of context to resolve abstract contextual problems and reflect on the role of management and its efficiency in delivering projects; and enable the Student to reflect on personal and/or group competencies and output, by utilising acquired highly specialized intellectual knowledge of project management.

### **Research Project (LMA8X12)**

The purpose of the module is for students to understand the rationale for research and to gain skills in undertaking field research. The module culminates in the submission of a scientifically correct and academically sound research proposal. This module covers the following topics: UJ Library orientation (workshop), ethical considerations in research, an introduction to Social Sciences research, research proposal workshop, quantitative research methods, qualitative research methods, quantitative data analysis and presentation (workshop) and qualitative data analysis.

### **Road Freight Transport (TRE8X09 & TRE8X10)**

The purpose of these modules are to to familiarise the learner with all aspects relating to road freight transport and its role in the national economy. Topics include: The extent of road freight transport. Modal characteristics and inherent advantages. Intermodalism –

opportunities and developments. Intermodal technology – Door-to-door logistics. Practical road/rail interface. Policy recommendations – the White Paper on Transport. History, evaluation and current status of road transport and legislation. The RTQS. Law enforcement and management. Role of public and private sector in road freight transport. Types of carrier ownership. Own transport vs. for-hire transport. Transport planning. Routing and vehicle utilisation. Vehicle specification and design. Legislation on hazardous products and abnormal loads. Costing and pricing of transport.

### **Maritime Transport (TRE8X11 & TRE8X12)**

The modules cover: The organization of sea transport – major institutions, shipping lines, port authorities, governments. The demand for and supply of shipping – bulk/liners/tramp services. Global trading and cyclical factors. Shipping economics and pricing. Conference systems. Shipping policy instruments. Types of ships. Equipment on ships. Documentation in international trade. Port Management. Safety at sea. Ship registration and financing. Qualification standards. Shipping Law and Regulations. Pollution and salvage legislation. Flags of convenience. International conventions. National and international policies on maritime issues.

### **Aviation Transport (TRE8X13 & TRE8X14)**

The purpose of these modules are to to familiarize the learner with aspects related to aviation management in South Africa. Although the focus of the module is to concentrate on airlines and airport management, aviation legislation and institutional structures, it will also be expected of the learner to understand the economics, costing procedures and unique characteristics of the airline industry. At the end of the module learners will have a thorough theoretical base that will enable them to manage aviation tasks. History and role of aviation in South Africa. Domestic and international air transport policy. The White Paper on Transport and various international agreements and conventions.

Roles and responsibilities of institutional structures, like the Airports Company and other governmental institutions. Airline Management and organization. Pricing, demand and output determination. Airline scheduling. Fleet planning and aircraft selection. Aircraft financing and passenger marketing. Aviation infrastructure. Airport administration and management. Airport costs. Airport pricing strategies and policies. Revenue recovery structures.

### **Quantitative Management Techniques In Logistics (LMA8X06)**

The purpose of this module is to provide the student with insight into the importance of quantitative analysis as a decision tool on a strategic, tactical and operational level in logistics. Enable the student to apply quantitative analysis techniques in logistics decisions and reflect upon the application made. Enhance the student's ability to perform rational and analytical decision-making in logistics. Prepare the student for a career in logistics management and provide a basis for further learning in the field of Logistics and Supply Chain Management.

### **Demand Planning (LMA8X11)**

The purpose of this module is to introduce demand planning as a process to manage the demand/ supply imbalance in a company, increasing the utilisation of available resources.

### **Humanitarian Logistics (LMA8X07 & LMA8X08)**

The purpose of these modules are to enable the student to apply the knowledge required to formulate a channel strategy and undertake a network design that fulfils the performance measurement requirements from the various stakeholders active in humanitarian operations.

Upon the successful completion of this module, the student will possess a highly specialised level of knowledge of the requirements for humanitarian logistics and what role it plays within the modern supply chain. The intellectual competency of the student will be developed to

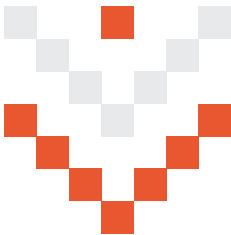
formulate and design the type of supply chain required for a specific humanitarian operation.

### **Rail Transport (TRE8X07 & TRE8X08)**

These modules aim to equip the student with an understanding of the historical significance of rail transport from an international and South African perspective and to explain current railway developments.

It also prepares the student to explain the technological characteristics of railways, with respect to both fixed and moving infrastructure. Equip students with the knowledge of information systems in rail transport from both a managerial and operational viewpoint. Enable students to describe the current obstacles and impediments to efficient railway operations in the Southern African context. Develop the ability of students to describe future operating practices for railways, particularly those relating to privatization, concessioning and franchising. Prepare the student to evaluate the social role of the railway and its ability to promote tourism and rural development.





**School of Management**

College of Business and Economics

Department of Transport and Supply Chain Management

[www.uj.ac.za/transport](http://www.uj.ac.za/transport)