

2" (Ø70 mm) Technical Information

Tank unit / Adapter and Hose unit / Coupler



According to NATO STANAG 3756

Material	Maximum working pressure	Test pressure	Minimum Burs Pressure
Aluminium	16 bar / 232 psi	24 bar / 348 psi	80 bar / 1160 psi
Brass/Gun Metal	16 bar / 232 psi	24 bar / 348 psi	80 bar / 1160 psi
Stainless Steel	25 bar / 363 psi	37,5 bar / 544 psi	125 bar / 1813 psi
Titan	25 bar / 363 psi	37,5 bar / 544 psi	125 bar / 1813 psi
Hastelloy	25 bar / 363 psi	37,5 bar / 544 psi	125 bar / 1813 psi
Peek	6 bar / 87 psi	9 bar / 131 psi	30 bar / 435 psi

Connections

1½" and 2" in BSP, NPT and Flanged inlet

Applications

For industrial process plant, road and rail tankers, ISO containers, IBC containers, Pharmaceutical and Petrochemical industries or on any application where spillage needs to be minimized.

Media

Petroleum products: Gasoline, diesel, oil etc.

Chemical products: Ethylene Oxide, Propylene Oxide, Acrylonitrile, Butadiene, Ammonia, Vinyl Chloride, Toluene, Xylene, Sulphuric Acid, Phenol etc.

Gas:

Dry powder: Chocolate powder e.t.c.

Material

Aluminium, Brass/Gunmetal, Stainless Steel, Hastelloy and PEEK. Other materials on request.

Seals

Standard seals in FPM (Viton®), EPDM, Chemraz®, Kalrez®, NBR (Nitrile). Other materials on request.

High Flow Rates / Low Pressure Drop

Allows maximum product transfer with minimal losses

Recommended Maximum Flow Rates

900 litres/minute (fuel)

Selectivity

- Avoid mixing products:

To avoid product contamination caused by connecting a hose unit to the wrong tank unit, selective versions of the hose and tank units are available. Each unit has a number of selective positions, designated by a coded part number according to the coupling size - specify when placing order.

Interchangeability:

Compatibility with other existing brands, e.g. TODO-matic and Fulcrum couplings.

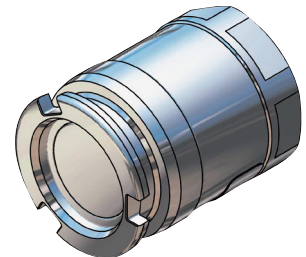
Hose unit with Integrated Swivel

All hose units are designed with integrated Swivel

2" (Ø70 mm) Tank unit / Adapter - Female thread

According to NATO STANAG 3756

Connection ¹⁾ Inch/DN	Body Material ²⁾	Seal ³⁾		Weight		Code No				
		O-ring	Flat seal	kg	lbs					
F 1½" BSP	Al	Standard: FPM/FKM (Viton®)	PUR (Vulkollan®)			T207A1101B				
F 2" BSP				0,4		T210A1101B				
F S60x6						T2108A1101B				
F W2"-7						T2112A1101B				
F 1½" NPT						T208A1101				
F 2" NPT						T211A1101				
F 1½" BSP	Br		Other on request	PUR (Vulkollan®)	1,2		T207A2201B			
F 2" BSP					1,1		T210A2201B			
F S60x6					1,0		T2108A2201B			
F W2"-7					1,0		T2112A2201B			
F 1½" NPT							T208A2201			
F 2" NPT					1,1		T211A2201			
F 1½" BSP	SS	Other on request		PTFE (Teflon®)	1,1		T207A4401A			
F 2" BSP					1,0		T210A4401A			
F S60x6					1,0		T2108A4401A			
F 1½" NPT					1,2		T208A4401			
F 2" NPT					1,1		T211A4401			
F 1½" BSP					Titan	Other on request	PTFE (Teflon®)			T207A6601A
F 2" BSP	0,6			T210A6601A						
F 1½" NPT				T208A6601						
F 2" NPT	0,6			T211A6601						
F 1½" BSP	Hastelloy		Other on request	PTFE (Teflon®)						T207A7701A
F 2" BSP										T210A7701A
F 1½" NPT								T208A7701		
F 2" NPT							T211A7701			
F 1½" BSP		PEEK			Other on request		PTFE (Teflon®)			T207A9901A
F 2" BSP								0,25		T210A9901A
F 1½" NPT								T208A9901		
F 2" NPT								T211A9901		



1) Female thread BSP=ISO 228, NPT=ANSI B1.20.1

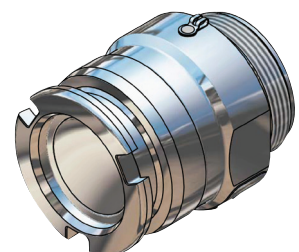
2) **Mtrl:** Al=Aluminium, Br=Brass, SS=Stainless Steel, Ti=Titan, Ha=Hastelloy, PE=PEEK

3) Standard seal. Other on request.

2" (Ø70 mm) Tank unit / Adapter - Male thread

According to NATO STANAG 3756

Connection ¹⁾ Inch/DN	Material ²⁾	Seal ³⁾	Weight		Code No	
		O-ring	kg	lbs		
M 2" BSP	Al	Standard: FPM/FKM (Viton®)	1,0	-	T278A1101	
M 2" NPT					T279A1101	
M W2"-7					T2123A1101	
M 2" BSP	Br		Other on request	-	-	T278A2201
M 2" NPT						T279A2201
M W2"-7						T2123A2201
M 2" BSP	SS	Other on request		1,0	-	T278A4401
M 2" NPT				1,1		T279A4401



1) Male thread BSP=ISO 228, NPT=ANSI B1.20.1

2) **Mtrl:** Al=Aluminium, Br=Brass, SS=Stainless Steel

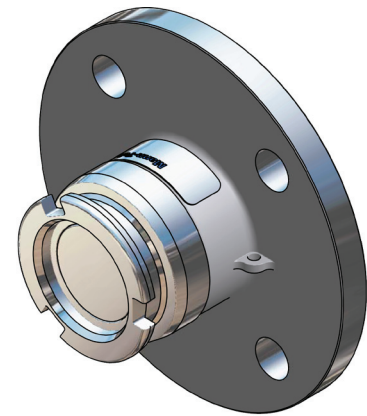
3) Standard seal. Other on request.

Viton® (FPM) and Teflon® (FPM/KPM) are registered trademarks of DuPont, DuPont Elastomers. Vulkollan® is registered trademark of Bayer AG

2" (Ø70 mm) Tank unit / Adapter, Flanged inlet

According to NATO STANAG 3756

Flange ¹⁾	Body Material ²⁾	Seal ³⁾		Weight		Code No			
		O-ring		kg	lbs				
undrilled Ø165 mm	Al			1,0		T219B1101			
DN 40 PN 10 / 16 Type A				0,9		T227B1101			
1½" ANSI 150 PSI				0,8		T255B1101			
DN 50 PN 10 / 16 Type A				1,0		T230B1101			
2" ANSI 150 PSI				0,9		T257B1101			
TW1 / 80				0,9		T265B1101			
undrilled Ø165 mm	GM			3,3		T219B2201			
DN 40 PN 10 / 16 Type B				2,5		T227B2201			
DN 40 PN 25 / 40 Type B				-		T228B2201			
1½" ANSI 150 PSI				2,2		T255B2201			
1½ " ANSI 300 PSI				-		T256B2201			
DN 50 PN 10 / 16 Type B				3,1		T230B2201			
DN 50 PN 25 / 40 Type B				-		T231B2201			
2" ANSI 150 PSI				2,5		T257B2201			
2 " ANSI 300 PSI				-		T258B2201			
TW1 / 80				2,4		T265B2201			
undrilled Ø165 mm				SS			3,2		T219B4401
undrilled Ø165 mm **)							-		T219B4401F
DN 40 PN 10 / 16 Type B	2,4		T227B4401						
DN 40 PN 10 / 16 Type B **)	-		T227B4401F						
DN 40 PN 25 / 40 Type B	2,4		T228B4401						
DN 40 PN 25 / 40 Type B **)	-		T228B4401F						
1½" ANSI 150 PSI	1,7		T255B4401						
1½" ANSI 150 PSI **)	-		T255B4401F						
1½ " ANSI 300 PSI	2,1		T256B4401						
1½ " ANSI 300 PSI **)	-		T256B4401F						
DN 50 PN 25 / 40*) Type E	2,9		T229B4401						
DN 50 PN 10 / 16 Type B	2,7		T230B4401						
DN 50 PN 10 / 16 Type B **)	-		T230B4401F						
DN 50 PN 25 / 40 Type B	3,0		T231B4401						
DN 50 PN 25 / 40 Type B **)	-		T231B4401F						
2" ANSI 150 PSI	2,4		T257B4401						
2" ANSI 150 PSI **)	-		T257B4401F						
2 " ANSI 300 PSI	2,5		T258B4401						
2 " ANSI 300 PSI **)	-		T258B4401F						
TW1 / 80	-		T265B4401						
DN 50 DIN 11864	-		T2152B4401						
undrilled Ø165 mm	Titan								T219A6601
DN 40 PN 10 / 16 Type B									T227A6601
DN 40 PN 25 / 40 Type B									T228A6601
1½" ANSI 150 PSI				1,7		T255A6601			
1½ " ANSI 300 PSI						T256A6601			
DN 50 PN 10 / 16 Type B						T230A6601			
DN 50 PN 25 / 40 Type B						T231A6601			
2" ANSI 150 PSI						T257A6601			
2 " ANSI 300 PSI						T258A6601			
undrilled Ø165 mm				Hastel-loy					T219A7701
DN 40 PN 10 / 16 Type B			T227A7701						
DN 40 PN 25 / 40 Type B			T228A7701						
1½" ANSI 150 PSI			T255A7701						
1½ " ANSI 300 PSI B			T256A7701						
DN 50 PN 10 / 16 Type B			T230A7701						
DN 50 PN 25 / 40 Type B			T231A7701						
2" ANSI 150 PSI			T257A7701						
2 " ANSI 300 PSI			T258A7701						
undrilled Ø165 mm	PEEK					T219A9901			
DN 40 PN 10 / 16 Type B				1,0		T227A9901			
1½" ANSI 150 PSI						T255A9901			
DN 50 PN 10 / 16 Type B				1,0		T230A9901			
2" ANSI 150 PSI				1,0		T257A9901			



Standard:
FPM/FKM
(Viton®)

Other on request

*) Type E, EN 1092-1:2001 Spigot
**) Flange with standard thickness

- 1) Flanges according to EN 1092 , ANSI B16.5 and DIN 28459.
- 2) **Mtrl:** Al=Aluminium, GM=Gun Metal, SS=Stainless Steel,
- 3) Standard seal. Other on request.

Viton® (FPM) and Teflon® (FPM/KPM) are registered trademarks of DuPont, DuPont Elastomers. Vulkollan® is registered trademark of Bayer AG

2" (Ø70 mm) Hose unit / Coupler - Female thread

According to NATO STANAG 3756

Connection ¹⁾ Inch/DN	Material ²⁾	Seal ³⁾		Weight		Code No			
		O-ring	Flat seal	kg	lbs				
F 1½" BSP	Al	Standard: FPM/FKM (Viton®)	PUR (Vulkollan®)	1,2		S207A1101B			
F 1½" BSP-Big mouth*)						S207A1101BI			
F 2" BSP				1,1		S210A1101B			
F 2" BSP-Big mouth*)				1,1		S210A1101BI			
F 1½" NPT				1,1		S208A1101			
F 1½" NPT-Big mouth*)				-		S208A1101I			
F 2" NPT				1,1		S211A1101			
F 2" NPT-Big mouth*)				-		S211A1101I			
F 1½" BSP	Br		Other on request	PUR (Vulkollan®)	2,6		S207A2201B		
F 1½" BSP-Big mouth*)					-		S207A2201BI		
F 2" BSP					2,4		S210A2201B		
F 2" BSP-Big mouth*)							S210A2201BI		
F 1½" NPT					2,5		S208A2201		
F 1½" NPT-Big mouth*)							S208A2201I		
F 2" NPT					2,5		S211A2201		
F 2" NPT-Big mouth*)							S211A2201I		
F 1½" BSP	SS	Other on request		PTFE Teflon®	2,5		S207A4401A		
F 2" BSP					2,3		S10A4401A		
F 1½" NPT					2,4		S208A4401		
F 2" NPT					2,3		S211A4401		
F 1½" BSP	Titan			Other on request	PTFE Teflon®	1,3		S207A6601A	
F 2" BSP						1,3		S210A6601A	
F 1½" NPT						-		S208A6601	
F 2" NPT						1,4		S211A6601	
F 1½" BSP	Hastelloy		Other on request		PTFE Teflon®	2,3		S207A7701A	
F 2" BSP						2,3		S210A7701A	
F 1½" NPT						-		S208A7701	
F 2" NPT						2,3		S211A7701	
F 1½" BSP	PEEK				Other on request	PTFE Teflon®	-		S207A9901A
F 2" BSP							1,3		S210A9901A
F 1½" NPT							-		S208A9901
F 2" NPT							1,3		S211A9901



*) Adapted for older models of EMCO Wheaton couplings

1) Female thread BSP=ISO 228, NPT=ANSI B1.20.1

2) **Mtrl:** Al=Aluminium, Br=Brass, SS=Stainless Steel, Ti=Titan, Ha=Hastelloy, PE=PEEK

3) Standard seal. Other on request.

2" (Ø70 mm) Hose unit / Coupler - Male thread

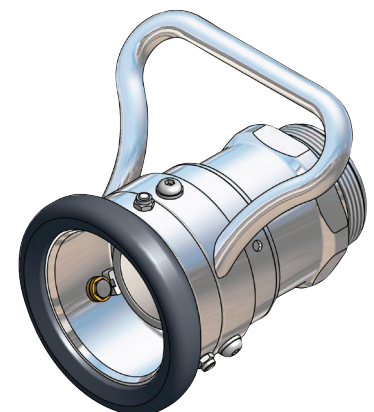
According to NATO STANAG 3756

Connection ¹⁾ Inch/DN	Body Material ²⁾	Seal ³⁾		Weight		Code No				
		O-ring		kg	lbs					
M 2" BSP	Al	Standard: FPM/FKM (Viton®)				S278A1101				
M 2" NPT						S279A1101				
M S60x6						S2109A1101				
M W2"-7				1,3		S2123A1101				
M 2" BSP	Br			Other on request				S278A2201		
M 2" NPT								S279A2201		
M S60x6								S2109A2201		
M W2"-7								S2123A2201		
M 2" BSP	SS					Other on request		2,3		S278A4401
M 2" NPT										S279A4401
M S60x6										S2109A4401
M W2"-7										S2123A4401

1) Male thread BSP=ISO 228, NPT=ANSI B1.20.1

2) **Mtrl:** Al=Aluminium, Br=Brass, SS=Stainless Steel,

3) Standard seal. Other on request.

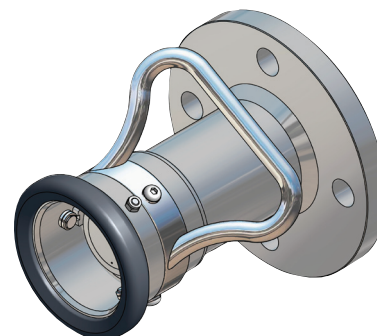


Viton® (FPM) and Teflon® (FPM/KPM) are registered trademarks of DuPont, DuPont Elastomers. Vulkollan® is registered trademark of Bayer AG

2" (Ø70 mm) Hose unit / Coupler, Flanged inlet

Flange ¹⁾	Body Material ²⁾	Seal ³⁾	Weight		Code No		
		O-ring	kg	lbs			
undrilled Ø165 mm	Al				S219A1101		
DN 40 PN 10 / 16 Type A					S227A1101		
1½" ANSI 150 PSI					S255A1101		
DN 50 PN 10 / 16 Type A			2,3		S230A1101		
2" ANSI 150 PSI					S257A1101		
TW1 / 80					S265A1101		
undrilled Ø165 mm	GM				S219A2201		
DN 40 PN 10 / 16 Type B					S227A2201		
DN 40 PN 25 / 40 Type B					S228A2201		
1½" ANSI 150 PSI			5,1		S255A2201		
1½" ANSI 300 PSI					S256A2201		
DN 50 PN 10 / 16 Type B					S230A2201		
DN 50 PN 25 / 40 Type B					S231A2201		
2" ANSI 150 PSI			5,1		S257A2201		
2" ANSI 300 PSI					S258A2201		
TW1 / 80					S265A2201		
undrilled Ø165 mm			SS				S219A4401
undrilled Ø165 mm **)							S219A4401F
DN 40 PN 10 / 16 Type B					S227A4401		
DN 40 PN 10 / 16 Type B **)					S227A4401F		
DN 40 PN 25 / 40 Type B					S228A4401		
DN 40 PN 25 / 40 Type B **)					S228A4401F		
1½" ANSI 150 PSI					S255A4401		
1½" ANSI 150 PSI **)					S255A4401F		
1½" ANSI 300 PSI					S256A4401		
1½" ANSI 300 PSI **)	6,6				S256A4401F		
DN 50 PN 25 / 40*) Type E					S229A4401		
DN 50 PN 10 / 16 Type B	Standard:	5,4			S230A4401		
DN 50 PN 10 / 16 Type B **)	FPM/FKM	5,4			S230A4401F		
DN 50 PN 25 / 40 Type B	(Viton®)	5,4			S231A4401		
DN 50 PN 25 / 40 Type B **)					S231A4401F		
2" ANSI 150 PSI	Other on request	5,1			S257A4401		
2" ANSI 150 PSI **)					S257A4401F		
2" ANSI 300 PSI					S258A4401		
2" ANSI 300 PSI **)					S258A4401F		
TW1 / 80					S265A4401		
DN 50 DIN 11864		3,1			S2152B4401		
undrilled Ø165 mm	Titan						S219A6601
DN 40 PN 10 / 16 Type B							S227A6601
DN 40 PN 25 / 40 Type B							S228A6601
1½" ANSI 150 PSI					S255A6601		
1½" ANSI 300 PSI					S256A6601		
DN 50 PN 10 / 16 Type B					S230A6601		
DN 50 PN 25 / 40 Type B					S231A6601		
2" ANSI 150 PSI					S257A6601		
2" ANSI 300 PSI					S258A6601		
undrilled Ø165 mm			Hastelloy				S219A7701
DN 40 PN 10 / 16 Type B					S227A7701		
DN 40 PN 25 / 40 Type B					S228A7701		
1½" ANSI 150 PSI					S255A7701		
1½" ANSI 300 PSI					S256A7701		
DN 50 PN 10 / 16 Type B	5,4				S230A7701		
DN 50 PN 25 / 40 Type B					S231A7701		
2" ANSI 150 PSI					S257A7701		
2" ANSI 300 PSI			S258A7701				
undrilled Ø165 mm	PEEK				S219A9901		
DN 40 PN 10 / 16 Type B			5,4		S227A9901		
1½" ANSI 150 PSI Type B					S255A9901		
DN 50 PN 10 / 16 Type B			5,4		S230A9901		
2" ANSI 150 PSI					S257A9901		

According to
NATO STANAG 3756



*) Type E, EN 1092-1:2001 Spigot
**) Flange with standard thickness

1) Flanges according to EN 1092, ANSI B16.5 and DIN 28459.

2) **Mtrl:** Al=Aluminium, GM=Gun Metal, SS=Stainless Steel

3) Standard seal. Other on request.