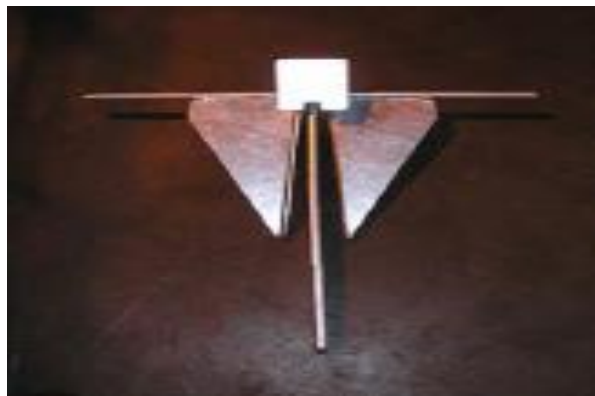


**3000-Gallons per Hour (GPH)
Reverse Osmosis Water Purification Unit (ROWPU)
For ROWPU-1 and WTA-60
Pictorial Inventory**



**Adapter, Water Flush
NSN: 4930-01-013-7590
P/N: 13229E0481
QTY: 1 EA**



**Anchor Assembly
NSN: 2040-01-349-0496
P/N:13229E0167
QTY: 1 EA**



**Apron, Laboratory
NSN: 8415-00-634-5023
P/N:1130
QTY: 1 EA**



**Binder, Looseleaf
NSN: 7510-00-015-0429
P/N: 35 AW
QTY: 1 EA**

**3000-Gallons per Hour (GPH)
Reverse Osmosis Water Purification Unit (ROWPU)
For ROWPU-1 and WTA-60
Pictorial Inventory**



**Binder Paper, Looseleaf
NSN: 7510-01-102-1162
P/N: 1201
QTY: 1 PK**



**Box, Storage
NSN: N/A
P/N: 13229E0234-3
QTY: 1 EA**

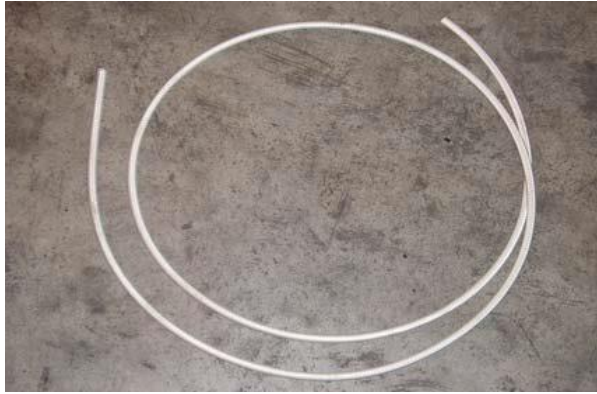


**Box, Storage
NSN: N/A
P/N: 13229E0234-4
QTY: 1 EA**



**Box, Storage
NSN: N/A
P/N: 13229E0234-1
QTY: 1 EA**

**3000-Gallons per Hour (GPH)
Reverse Osmosis Water Purification Unit (ROWPU)
For ROWPU-1 and WTA-60
Pictorial Inventory**



**Cable, Ground (15FT)
NSN: 6150-01-505-8635
P/N: 12462602
QTY: 1 EA**



**Cable, Heat Lamp, Raw Water Pump W61
(Extension Cord)
NSN: 6150-01-350-1387
P/N: 13229E1262-7
QTY: 1 EA**



**Cable, Power, Raw Water Pump W57
(Main Power Cable)
NSN: 6150-01-345-5613
P/N: 13229E1262-4
QTY: 1 EA**



**Cable, Power, Raw Water Pump W58
(Extension Cord)
NSN: 6150-01-345-5614
P/N: 13229E1262-5
QTY: 1 EA**

**3000-Gallons per Hour (GPH)
Reverse Osmosis Water Purification Unit (ROWPU)
For ROWPU-1 and WTA-60
Pictorial Inventory**



**Cable, 24 VDC, Generator to Van W2
NSN: 6150-01-351-9930
P/N: 13229E1260-6
QTY: 1 EA**



**Connector, RO Element
NSN: 4730-01-351-8102
P/N: 13229E0212
QTY: 8 EA**



**Coupling, Clamp, 1-1/2 in. Pipe
(Can be different colors)
NSN: 5342-01-346-7265
P/N: 13229E0156-2
QTY: 2 EA**



**Coupling, Sump, Drain (WTA-060 Model Only)
NSN: 4730-00-947-0364
P/N: 13229E1122
QTY: 4 EA**

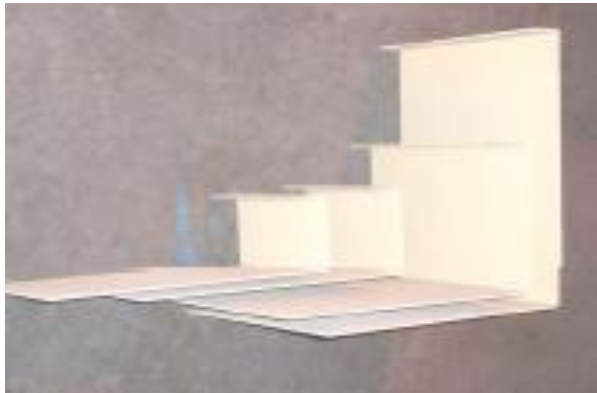
**3000-Gallons per Hour (GPH)
Reverse Osmosis Water Purification Unit (ROWPU)
For ROWPU-1 and WTA-60
Pictorial Inventory**



**Cover, Distribution Pump
NSN: 5340-01-466-2753 (Green)
P/N: 13229E0031-2
QTY: 1 EA**



**Cover, Raw Water Pump
NSN: 5340-01-466-2699
P/N: 13229E0031-1
QTY: 1 EA**



**DIVIDER, Box Used in Box 1
NSN: 8135-01-354-2050
P/N: 4187
DIVIDER, Box Used in Box 2
NSN: 8135-00-144-9856
P/N: 8848621-1
DIVIDER, Box Used in Box 3
NSN: 8135-01-057-4214
P/N: DV1025
DIVIDER, Box Used in Box 4
NSN: 8135-01-077-5700
P/N: 11643991**



**Elbow, 45 Degree, Grooved End
(WTA-060 Only)
NSN: 4730-01-468-5339
P/N: 13229E1141
QTY: 2 EA**

**3000-Gallons per Hour (GPH)
Reverse Osmosis Water Purification Unit (ROWPU)
For ROWPU-1 and WTA-60
Pictorial Inventory**



**Elements, RO
NSN: 4610-01-253-4294
P/N: 8040-HSM-SWC2
QTY: 12 EA**



**Extinguisher, Fire, 5 lbs. BC
NSN: 6830-01-351-3112
P/N: 429103
QTY: 2 EA**



**Eyewash Station
NSN: 4240-01-357-4912
P/N: SE-591
QTY: 1 EA**



**Frame Assembly, Separator
(WTA-060 Only)
NSN: N/A
P/N: 13229E0075
QTY: 1 EA**

**3000-Gallons per Hour (GPH)
Reverse Osmosis Water Purification Unit (ROWPU)
For ROWPU-1 and WTA-60
Pictorial Inventory**



**GENERATOR SET, 60 KW
6115-00-118-1243
MEP-006A
1 EA**



**GENERATOR SET, 60 KW (TQC)
6115-01-274-7390
MEP-806A
1 EA**



**Gloves, Rubber, Ind.
NSN: 4940-01-534-2852
P/N: KTC-S0208
QTY: 6 EA**



**Ground Rod Assembly
(3 Sections, with 3 Couplers)
NSN: 5975-00-878-3791
P/N: AA55804-3B9FT
QTY: 1 SET**

**3000-Gallons per Hour (GPH)
Reverse Osmosis Water Purification Unit (ROWPU)
For ROWPU-1 and WTA-60
Pictorial Inventory**



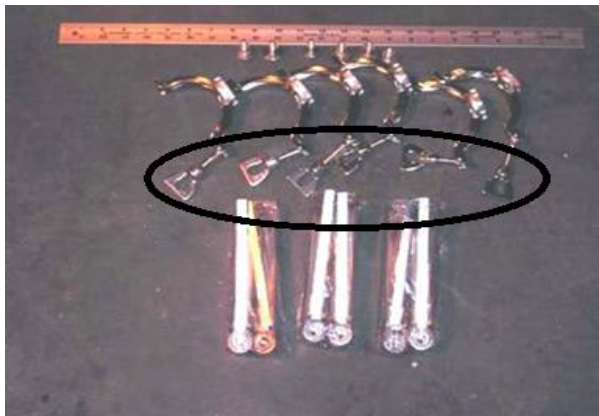
**Ground Rod Clamp
NSN: 5999-00-186-3912
P/N: 70-801074
QTY: 2 EA**



**Handle, Butterfly Valve Kit
(WTA-060)
NSN: 5340-01-511-4502
P/N: 03210
QTY: 6 EA**



**HANDLE, Valve
NSN: 5340-01-430-4205
P/N: BVP-86-10A
QTY: 6 EA**



**SCREW, Thumb
NSN: 5305-01-506-0104
P/N: BVP-B96-11
QTY: 6 EA**

**3000-Gallons per Hour (GPH)
Reverse Osmosis Water Purification Unit (ROWPU)
For ROWPU-1 and WTA-60
Pictorial Inventory**



**CLAMP, Block, Half
NSN: 5340-01-502-9033
P/N: BVP-86-12A-2.5
QTY: 6 EA**



**37
HANDLE, Butterfly Valve (ROWPU-1)
NSN: 5340-01-430-4205
P/N: BVP-86-10A
QTY: 6 EA**



**Hand Rail, Ladder
NSN: 2590-01-477-7443
P/N: 13229E0539
QTY: 2 EA**



**Hand Rail, Ladder
NSN: 2590-01-477-7439
P/N: 13229E0538
QTY: 4 EA**

3000-Gallons per Hour (GPH)
Reverse Osmosis Water Purification Unit (ROWPU)
For ROWPU-1 and WTA-60
Pictorial Inventory



Heat Lamp Assembly, Raw Water Pump
(W/ Lamp and Power Cable W61)
NSN: 4520-01-571-1071
P/N: 13229E1271-1
QTY: 1 EA



Heat Lamp Assembly, Distribution Pump
(W/Lamp and Power Cable W64)
NSN: N/A
P/N: 13229E1271-2
QTY: 1 EA



Hose Assembly, Auxiliary, 2in. x 60ft.
(Female X Female, 50 FT)
NSN: 4210-01-349-7779
P/N: 13229E1155
QTY: 1 EA



Hose Assembly, Cleaning Heat-Up
(Female X Female, 10 FT)
NSN: 4210-01-349-7780
P/N: 13229E0524
QTY: 1 EA

**3000-Gallons per Hour (GPH)
Reverse Osmosis Water Purification Unit (ROWPU)
For ROWPU-1 and WTA-60
Pictorial Inventory**



Hose Assembly, Diesel Fuel
(May be installed from generator to ISO Containe
NSN: N/A
P/N: 13229E0908
QTY: 1 EA



Hose Assembly, Eyewash Air Pressure
NSN: N/A
P/N: 13229E0856
QTY: 1 EA



Hose Assembly, Distribution with Nozzle
NSN: N/A
P/N: 13229E1156
QTY: 2 EA



Hose Assembly, Distribution Pump Suction
Suction (Male X Male, 10')
NSN: 4720-01-349-3637
P/N: 13229E0201
QTY: 1 EA

**3000-Gallons per Hour (GPH)
Reverse Osmosis Water Purification Unit (ROWPU)
For ROWPU-1 and WTA-60
Pictorial Inventory**



**Hose Assembly, Distribution Pump
Suction (5 foot)
NSN: 4720-01-351-4011
P/N: 13229E0202
QTY: 2 EA**



**Hose Assembly, Distribution System
(Female X Female, 10')
NSN: 4720-01-350-3787
P/N: 13229E0203
QTY: 1 EA**



**HOSE ASSEMBLY, Distribution Drain
NSN: N/A
P/N: 13229E0403
QTY: 1 EA**



**Hose Assembly, Raw Water Pump Drain
NSN: 2815-01-470-3387
P/N: 2250029
QTY: 1 EA**

**3000-Gallons per Hour (GPH)
Reverse Osmosis Water Purification Unit (ROWPU)
For ROWPU-1 and WTA-60
Pictorial Inventory**



Hose Assembly, NBC Operation
(41.5 Inch Long)
NSN: N/A
P/N: 13229E0624-1
QTY: 1 EA



Hose Assembly, NBC Operation
(71.5 Inch Long)
NSN: N/A
P/N: 13229E0624-2
QTY: 1 EA



Hose Assembly Product Outlet (10')
NSN: 4720-01-351-5891
P/N: 13229E0194
QTY: 5 EA



Hose Assembly, NBC Drain (25')
NSN: N/A
P/N: 13229E1378-27
QTY: 1 EA

**3000-Gallons per Hour (GPH)
Reverse Osmosis Water Purification Unit (ROWPU)
For ROWPU-1 and WTA-60
Pictorial Inventory**



**Hose Assembly,
Raw Water Distribution (50')
NSN: 4720-01-347-5480
P/N: 13229E1154
QTY: 4 EA**



**Hose Assembly, Raw Water Suction
(WTA-060 Only, Cyclone Separator Hose)
NSN: 4720-01-345-5640
P/N: 13229E1125
QTY: 2 EA**



**Hose Assembly, Raw Water Pump Suction
(ROWPU-1 Only, Cyclone Separator Hose)
NSN: 4720-01-345-5641
P/N:13229E0168
QTY: 10 EA**



**Hose Assembly, Sump Drain
(WTA-060 Only, Grooved Fitting One End)
NSN:4720-01-353-7429
P/N:13229E0127
QTY: 2 EA**

**3000-Gallons per Hour (GPH)
Reverse Osmosis Water Purification Unit (ROWPU)
For ROWPU-1 and WTA-60
Pictorial Inventory**



Hose Assembly, Sump Drain
(ROWPU-1 Only, Cam-Lock Fitting One End)
NSN:4720-01-517-1522
P/N:13229E0188
QTY: 2 EA



Hose Assembly, Sump Drain
(ROWPU-1 Only)
NSN: N/A
P/N:13229E0302-1
QTY: 2 EA



Hose Assembly, Utility
NSN: N/A
P/N:13229E0511
QTY: 1 EA



Hose Assembly, Waste Out
NSN:4720-01-352-8999
P/N:120-02219
QTY: 6 EA

**3000-Gallons per Hour (GPH)
Reverse Osmosis Water Purification Unit (ROWPU)
For ROWPU-1 and WTA-60
Pictorial Inventory**



**Ladder Access (with chains)
NSN: 2040-01-139-2574
P/N:603-4645121
QTY: 2 EA**



**Ladder, Step
TAN
NSN: 5440-01-353-3135
P/N: 13229E0242
QTY: 1**



**Cup Measuring 250 ml
(ROWPU-1 Only)
NSN:7240-00-138-7983
P/N:MIL-M43530
QTY: 1 EA**



**Lamp Incandescent (T-3-1/4)
NSN:6240-00-057-2887
P/N:A50588-1
QTY: 3 EA**

**3000-Gallons per Hour (GPH)
Reverse Osmosis Water Purification Unit (ROWPU)
For ROWPU-1 and WTA-60
Pictorial Inventory**



**Lamp Incandescent 100 Watt
NSN:6240-00-246-5052
P/N:100ARS120V
QTY: 4 EA**



**Lamp, Incandescent, Heat Lamp
Assembly
NSN:6240-00-843-0692
P/N:500PAR56QMFL120V
QTY: 1 EA**



**Meter Assembly, Flow Rate Indicator
NSN:6680-01-473-8286
P/N:13229E0889
QTY: 1 EA**



**Meter, Total Dissolved Solids
(TDS)
NSN:6630-00-127-4774
P/N:532T1
QTY: 1 EA**

**3000-Gallons per Hour (GPH)
Reverse Osmosis Water Purification Unit (ROWPU)
For ROWPU-1 and WTA-60
Pictorial Inventory**



**Meter Case TDS
NSN:6625-01-469-6925
P/N:PORTA-PAK
QTY: 1 EA**



**Meter Turbidity (ROWPU-1 Only)
(Model 2100 or 72102003)
NSN:6630-01-426-4333
P/N:46500-00
QTY: 1 EA**



**Meter Range Extender, TDS
NSN: 6630-01-103-9007
P/N: RE-10
QTY: 1 EA**

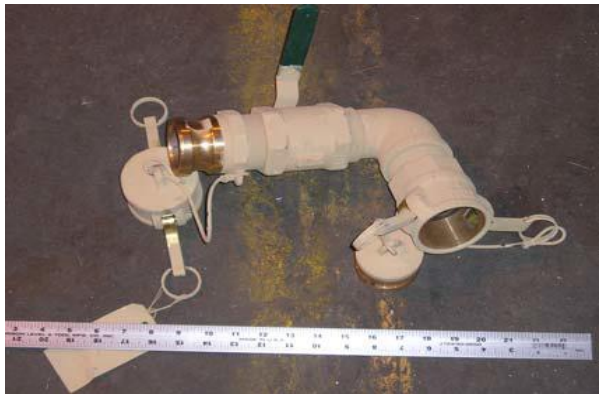


**Pipe Section, Distribution Pump
WTA-060 Only, Female fitting on inlet
NSN: 4730-01-469-6943
P/N:13229E0191
QTY: 1 EA**

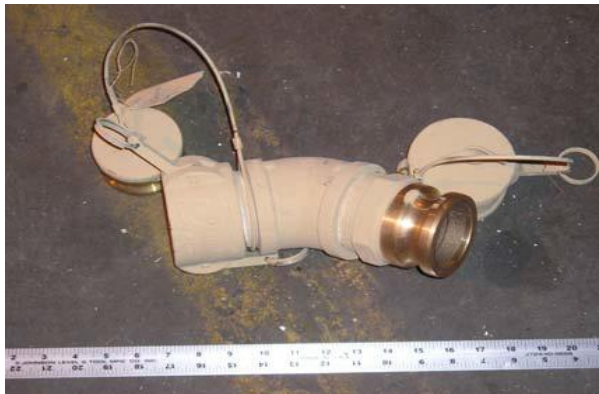
**3000-Gallons per Hour (GPH)
Reverse Osmosis Water Purification Unit (ROWPU)
For ROWPU-1 and WTA-60
Pictorial Inventory**



**Pipe Section, Distribution Pump Discharge
(ROWPU-1 Only, Male fitting on inlet)
NSN: 4730-01-469-6943
P/N:13229E0191
QTY: 1 EA**



**Pipe Section, Product to Storage
NSN: 4710-01-540-3842
P/N:13229E0630
QTY: 1 EA**



**Pipe Section, Raw Water Feed
WTA-060 Only
NSN: 4730-00-249-3878
P/N:702ELBOW45DEG
QTY: 1 EA**



**Pipe Section, Raw Water Feed
ROWPU-1 Only
NSN: N/A
P/N:13229E1124
QTY: 1 EA**

**3000-Gallons per Hour (GPH)
Reverse Osmosis Water Purification Unit (ROWPU)
For ROWPU-1 and WTA-60
Pictorial Inventory**



Pipe Section, Raw Water System
WTA-060 Only
NSN: N/A
P/N:13229E0124
QTY: 1 EA



Pipe Section, Raw Water System
ROWPU-1 Only
NSN: 5342-01-313-4481
P/N:810-4714432
QTY: 1 EA



Pipe Section, Separator Out
WTA-060 Only
NSN: 4710-01-540-3813
P/N:13229E0501
QTY: 1 EA



Pipe Section, Separator Out
ROWPU-1 Only
NSN: N/A
P/N:13229E0141
QTY: 1 EA

**3000-Gallons per Hour (GPH)
Reverse Osmosis Water Purification Unit (ROWPU)
For ROWPU-1 and WTA-60
Pictorial Inventory**



Pipe Section, Waste Out
NSN: N/A
P/N:13229E0140
QTY: 1 EA



Pump and Motor Assembly, Distribution
(WTA-060 Only, Outlet on pump male fitting)
NSN:4320-01-348-4386
P/N:13229E0043
QTY: 1 EA



Pump and Motor Assembly, Distribution
(ROWPU-1 Only, Outlet on pump female fitting)
NSN: N/A
P/N:13229E0190
QTY: 1 EA

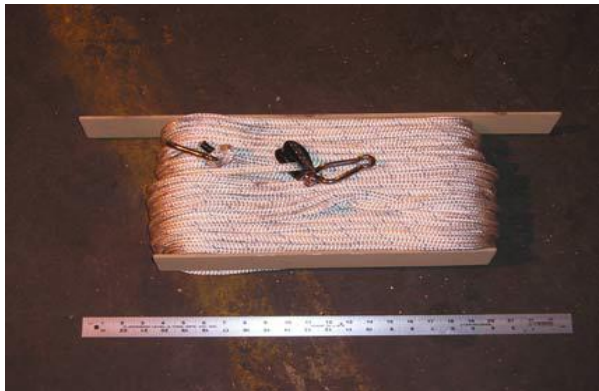


Pump and Motor Assembly, Raw Water
NSN:4320-01-353-8422
P/N:13229E0045
QTY: 1 EA

**3000-Gallons per Hour (GPH)
Reverse Osmosis Water Purification Unit (ROWPU)
For ROWPU-1 and WTA-60
Pictorial Inventory**



**Pump Assembly, Raw Water Prime Assist
NSN: 4320-01-353-2974
P/N:13229E0486
QTY: 1 EA**



**Rope Assembly, Anchor
NSN: 4020-00-869-7886
P/N:13229E1161
QTY: 1 EA**



**SEMI-TRAILER, 22.5 Ton
NSN: 2330-01-294-3367
P/N: M871A2
QTY: 1 EA**



**Separator Assembly, Left hand
(WTA-060 Only)
NSN:4610-01-345-6671
P/N:13229E0499
QTY: 1 EA
Separator Assembly, Right hand
(WTA-060 Only)
NSN:4610-01-345-6672
P/N:13229E0497
QTY: 1 EA**

**3000-Gallons per Hour (GPH)
Reverse Osmosis Water Purification Unit (ROWPU)
For ROWPU-1 and WTA-60
Pictorial Inventory**



**Separator Assembly
ROWPU-1 Only
NSN:4610-01-472-4529
P/N:13229E0176
QTY: 1 EA**



**Skid, Distribution Pump Assembly
NSN: N/A
P/N:13229E0016-1
QTY: 1 EA**



**Skid, Raw Water Pump Assembly
NSN: N/A
P/N:13229E0016-2
QTY: 1 EA**



**STAND, Step
NSN: 2590-01-466-1115
P/N: AY8001
QTY: 1 EA**

**3000-Gallons per Hour (GPH)
Reverse Osmosis Water Purification Unit (ROWPU)
For ROWPU-1 and WTA-60
Pictorial Inventory**



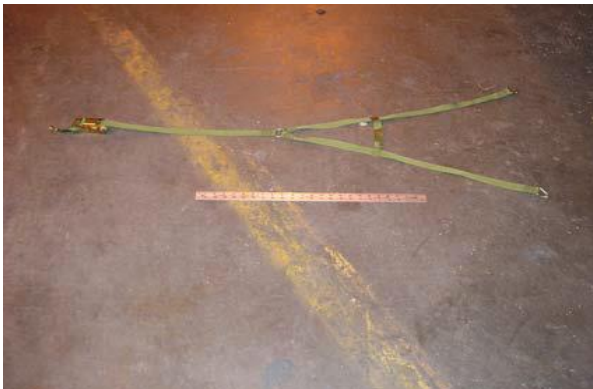
**LINE 97
Storage Tank, 3,000 Gallon
NSN:5430-01-318-9434
P/N:91038
QTY: 3 EA**



**Strainer, Intake, Ice Hole
NSN: 2040-00-393-3850
P/N:13229E1069
QTY: 1 EA**



**Strainer Suction (*Dolphin*)
NSN:4730- 01- 345- 5781
P/N:13229E0166
QTY: 1 EA**



**Strap, Eyewash Station
NSN:5340-01-352-8190
P/N:13229E1139
QTY: 1 EA**

**3000-Gallons per Hour (GPH)
Reverse Osmosis Water Purification Unit (ROWPU)
For ROWPU-1 and WTA-60
Pictorial Inventory**



**Strap, Access Ladder Tie Down
NSN:5430-01-353-1961
P/N:13229E1160-1
QTY: 2 EA**



**Strap, Tie Down 95 Inch
NSN:5340-01-353-3579
P/N:13229E1001-1
QTY: 1 EA**



**Strap, Tie Down 72 Inch
NSN:5340-01-353-8241
P/N:13229E1001-2
QTY: 1**



**Strap, Tie Down 80 Inch
NSN:5340-01-352-2840
P/N:ALS50890-CH-080-026
QTY: 2 EA**

**3000-Gallons per Hour (GPH)
Reverse Osmosis Water Purification Unit (ROWPU)
For ROWPU-1 and WTA-60
Pictorial Inventory**



**Strap Tie Down 83 Inch
NSN:5340-01-353-1308
P/N:13229E1001-4
QTY: 1 EA**



**Strap, Tie Down 104 Inch
NSN: 5340-01-352-6427
P/N: K15102-A104-10
QTY: 1**



**Strap, Tie Down 120 Inch
NSN: 5340-01-353-9483
P/N: 13229E1001-3
QTY: 4 EA**



**Strap, Tie Down 38 Inch
NSN: 5340-01-352-6428
P/N: ALS73190-CYSP-038-012
QTY: 2 EA**

**3000-Gallons per Hour (GPH)
Reverse Osmosis Water Purification Unit (ROWPU)
For ROWPU-1 and WTA-60
Pictorial Inventory**



**Tape Anti-Seizing, Size II
NSN: 8030-00-889-3535
P/N: AA58092-2-2
QTY: 1 EA**



**Tee, Special 2 In. X 2 In. X 3 In.
NSN: N/A
P/N:13229E1133
QTY: 1 EA**



**Test Kit, Available Chlorine
NSN: 6640-01-358-5340
P/N:2254-01
QTY: 1 EA**



**Test Kit, Color
NSN: 4610-01-349-8731
P/N: 13229E1328-1
QTY: 1 EA**

**3000-Gallons per Hour (GPH)
Reverse Osmosis Water Purification Unit (ROWPU)
For ROWPU-1 and WTA-60
Pictorial Inventory**



**Test Kit, Electronic Equipment
NSN: 6625-01-473-3742
P/N: 13229E1334-5
QTY: 1 EA**



**Test Kit, Cylinder, CO Monitor
NSN: 6830-01-529-8726
P/N: 47891
QTY: 1 EA**



**Tubing, Assembly, Non
NSN: 4720-01-469-6933
P/N: 13229E1052
QTY: 1 EA**



**Water Jug, 5 Gallon
NSN: 7240-01-359-0910
P/N: 13229E1037
QTY: 1 EA**

**3000-Gallons per Hour (GPH)
Reverse Osmosis Water Purification Unit (ROWPU)
For ROWPU-1 and WTA-60
Pictorial Inventory**



**LINE 117
WATER PURIFICATION UNIT, 3K
NSN: 7240-01-359-0910
P/N: 13229E1037
QTY: 1 EA**



**118
Wire Assembly, Cable Ground Van 20'
NSN: 6145-00-578-6595
P/N: M5086/2-4-9
QTY: 1 EA**



**Clamp, T-Bolt, Cartridge Filter
NSN: 5306-01-351-7744
P/N: 56555AW125-500
QTY: 2 EA**



**Coupling Nut T-Bolt
NSN: 5310-01-353-2582
P/N: 56541A6C-C
QTY: 2 EA**

**3000-Gallons per Hour (GPH)
Reverse Osmosis Water Purification Unit (ROWPU)
For ROWPU-1 and WTA-60
Pictorial Inventory**



**Coupling, Pipe, Grooved, 1 1/2 Inch
NSN: 5342-01-346-7265
P/N: 13229E0156-2
QTY: 1 EA**

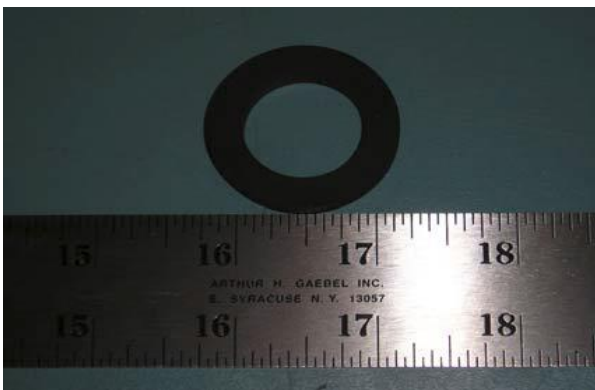


**Element, Air Compressor, Air Filter
Supply Line
NSN: 4330-01-350-9101
P/N: 059183A
QTY: 3 EA**



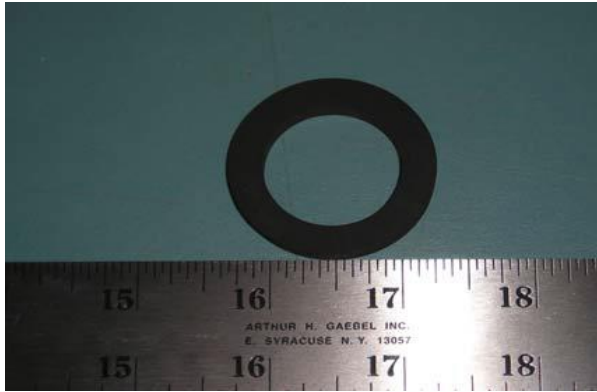
**Element, Cartridge Filter
NSN: 4330-01-350-9102
P/N: JP3R30P
QTY: 140 EA**

**ELEMENT, Cartridge Filter, 40 in.
NSN: 4610-01-517-6621
P/N: U003AW40U
QTY: 140 EA**



**Gasket, Cam and Groove 1-1/16 in.
NSN: 5330-01-349-8922
P/N: 13229E0857-1
QTY: 2 EA**

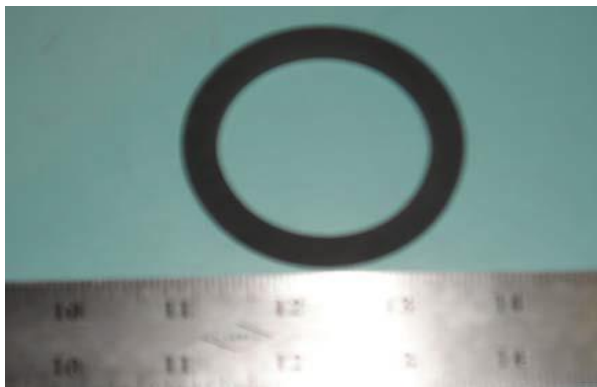
**3000-Gallons per Hour (GPH)
Reverse Osmosis Water Purification Unit (ROWPU)
For ROWPU-1 and WTA-60
Pictorial Inventory**



**Gasket, Cam and Groove, 1 Inch
NSN: 5330-01-351-7666
P/N: 13229E0857-2
QTY: 2 EA**



**Gasket, Cam and Groove, 3 in.
NSN: 5330-01-349-6190
P/N: NW7
QTY: 4 EA**

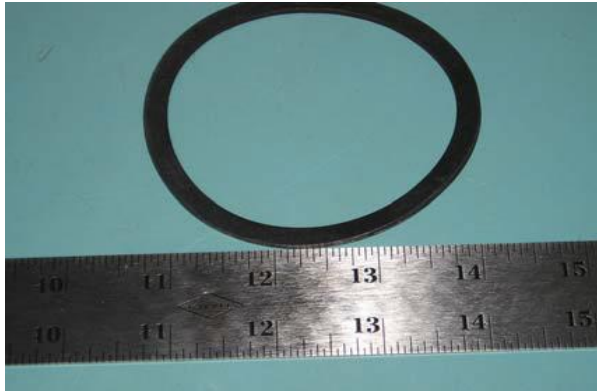


**Gasket, Coupling, 2 in.
NSN: 5330-01-349-8921
P/N: NW5
QTY: 6 EA**



**Gasket, Coupling, 2-1/2 in.
NSN: 5330-01-349-6191
P/N: NW6
QTY: 4 EA**

**3000-Gallons per Hour (GPH)
Reverse Osmosis Water Purification Unit (ROWPU)
For ROWPU-1 and WTA-60
Pictorial Inventory**



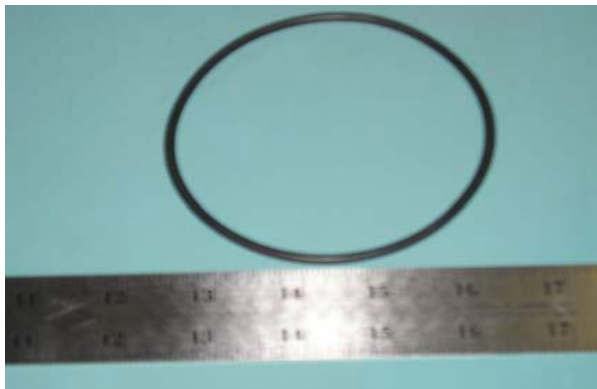
**Gasket, Flat, Basket Strainer
NSN: 5330-01-349-6191
P/N: 3274-E0
QTY: 2 EA**



**Packing, Preformed, 1.5 in., IPS
RO Element Adapter
NSN: 5330-01-349-8928
P/N: 6ER001-225
QTY: 4 EA**

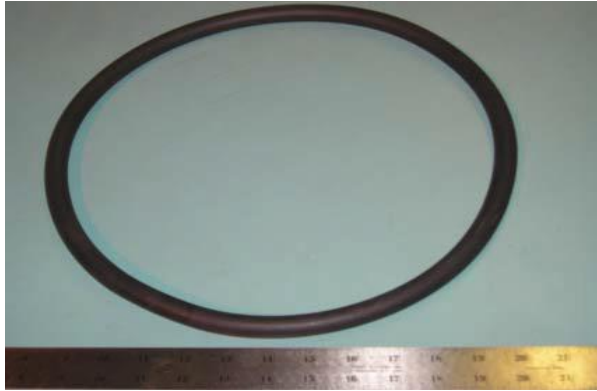


**HYPOCHLORITE PUMP, Backwash
NSN: 4320-01-493-4731
P/N: 13229E1267
QTY: 1 EA**



**Packing, Preformed, Basket Strainer
NSN: 5331-01-351-7615
P/N: 3176-E0
QTY: 1 EA**

**3000-Gallons per Hour (GPH)
Reverse Osmosis Water Purification Unit (ROWPU)
For ROWPU-1 and WTA-60
Pictorial Inventory**



**Packing, Preformed, Cartridge Filter
NSN: 5331-01-352-1160
P/N: 120-00365-000
QTY: 1 EA**



**Packing, Preformed, RO Center
NSN: 5331-01-353-9383
P/N: EPR2-119
QTY: 10 EA**



**Packing, Preformed, RO End Adapter
NSN: 5331-01-352-7478
P/N: 50716
QTY: 8 EA**



**Packing Performed, RO End Adapter
NSN: 5330-01-424-3761
P/N: 6ER001-225
QTY: 16 EA**

**3000-Gallons per Hour (GPH)
Reverse Osmosis Water Purification Unit (ROWPU)
For ROWPU-1 and WTA-60
Pictorial Inventory**



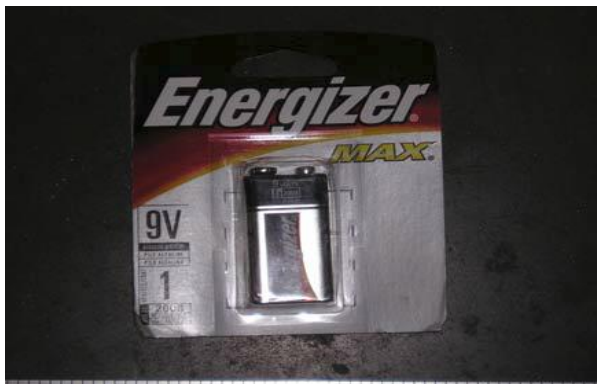
150
Packing, Preformed, RO End Cap
NSN: 5330-01-352-1980
P/N: 30714
QTY: 8 EA



151
Strainer Overscreen
NSN: 4730-01-351-3031
P/N: 13229E0223-4
QTY: 1 EA



Bag, Chain Hoist
NSN: 4610-01-466-5268
P/N: 13229E1345
QTY: 1 EA



Battery, Dry Alkaline
NSN: 6135-00-835-7210
P/N: 13229E1378-102
QTY: 2 EA

**3000-Gallons per Hour (GPH)
Reverse Osmosis Water Purification Unit (ROWPU)
For ROWPU-1 and WTA-60
Pictorial Inventory**



**Blade, Knife, 5 Blades
NSN: 5110-00-293-2865
P/N: GGG-K-494
QTY: 1 PK (5 Blades per pack)**



**Brush, Platters
NSN: 7920-00-244-7431
P/N: 13229E1009
QTY: 1 EA**



**Can, Priming Pitcher, 3 Quart
NSN:6640-01-531-2679
P/N: 80120
QTY: 1 EA**



**Face Shield. Ind.
NSN: 4240-01-239-2349
P/N: 38110
QTY: 1 EA**

**3000-Gallons per Hour (GPH)
Reverse Osmosis Water Purification Unit (ROWPU)
For ROWPU-1 and WTA-60
Pictorial Inventory**



**Flashlight
NSN: 6230-00-264-8261
P/N: MX-991U
QTY: 1 EA**



**Funnel Assembly
NSN: N/A
P/N: 13229E1049
QTY: 1 EA**



**Ground Rod Hammer
NSN: 5120-01-013-1676
P/N: P74-144
QTY: 1 EA**



**Hoist, Chain
NSN: 3950-01-354-1194
P/N: 622-2202-E15
QTY: 1 EA**

**3000-Gallons per Hour (GPH)
Reverse Osmosis Water Purification Unit (ROWPU)
For ROWPU-1 and WTA-60
Pictorial Inventory**



**Knife, Utility with Spare Blades
NSN: 5110-00-892-5071
P/N: PD5110-00-892-5071
QTY: 1 EA**



**Light, Trouble, 50 FT Cable
NSN: 6230-00-901-9755
P/N: W-L-661, TPF111
QTY: 1 EA**



**Paddle, Stirring
NSN: 7330-00-782-3247
P/N: FOODPADDLE
QTY: 1 EA**



**RO Element, Driver Assembly
NSN: NA
P/N: 13229E1135
QTY: 1 EA**

**3000-Gallons per Hour (GPH)
Reverse Osmosis Water Purification Unit (ROWPU)
For ROWPU-1 and WTA-60
Pictorial Inventory**



**Gage, Pressure, Pencil 20-120 psig
NSN: 4910-01-353-3123
P/N: S925
QTY: 1 EA**



**Repair Kit, Air Compressor (*PURUS Only*)
Consisting of: 4 mm Wrench, 5mm
Wrench, 6 mm Wrench, 8 mm Wrench,
Belt, List and Pouch
NSN: 4310-01-355-6344
P/N: PURUS-TOOL KIT
QTY: 1 EA**



**Ruler, 24 Inch
NSN: 5210-01-352-6612
P/N: 13229E1048
QTY: 1 EA**



**Screwdriver, 6 Inch Blade
NSN: 5120-01-367-3745
P/N: SDD6
QTY: 1 EA**

**3000-Gallons per Hour (GPH)
Reverse Osmosis Water Purification Unit (ROWPU)
For ROWPU-1 and WTA-60
Pictorial Inventory**



**Socket, 3/8 Inch Square Drive X 9/16 Hex
NSN: 5120-01-355-0883
P/N: SFS181
QTY: 1 EA**



**Socket, 3/8 Inch Square Drive X 7/8 Hex
NSN: 5120-01-235-5809
P/N: B107.1CLISTB
QTY: 1 EA**



**Spacer, RO Vessel
NSN: 4730-01-351-2965
P/N: 30719
QTY: 4 EA**



**Wipes, Hand
NSN: N/A
P/N: 13229E1135
QTY: 1 EA**

**3000-Gallons per Hour (GPH)
Reverse Osmosis Water Purification Unit (ROWPU)
For ROWPU-1 and WTA-60
Pictorial Inventory**



**Wrench, Hex Key, 1/4 In. Socket
Head Screw
NSN: 5120-00-798-2133
P/N: PD5120-00-798-2133
QTY: 1 EA**



**Wrench, Open End, Adjustable
NSN: 5120-00-449-8083
P/N: IB7536
QTY: 1 EA**



**Wrench, Ratchet, 3/8 In.
NSN: 5120-00-240-5364
P/N: GF720
QTY: 1 EA**



**Wrench, Pipe
NSN: 5120-00-262-8491
P/N: 318M0016P001
QTY: 1 EA**

**3000-Gallons per Hour (GPH)
Reverse Osmosis Water Purification Unit (ROWPU)
For ROWPU-1 and WTA-60
Pictorial Inventory**



**Wrench Tool, Open End, 5/8 In. X 9/16 In.
NSN: 5120-00-187-7126
P/N: 11655789-2
QTY: 6 EA**



**Key, Socket Head Screw, 5/64 In.
(ROWPU-1 ONLY)
NSN: 5120-00-224-2504
P/N: ARX132-20
QTY: 1 EA**