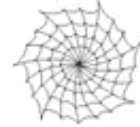




INTERNET AND EDUCATION

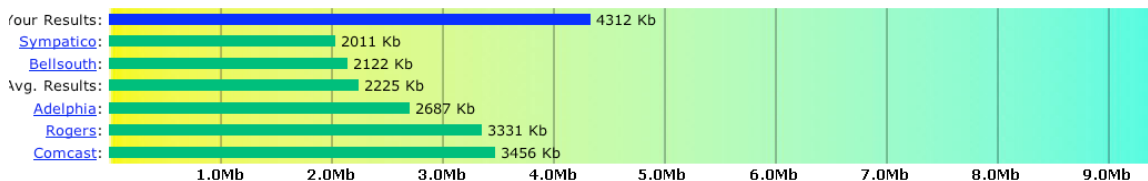


(1) Navigating the Internet: A Uniform Resource Locator (URL) is the unique address which identifies a resource on the Internet for routing purposes. Know how to interpret URLs.

- Use a "traceroute" program such as "WhatRoute" (Mac) or Neotrace (PC) to trace the route between your computer and a website outside of the United States. Include a screen shot showing a map and the text of the specific route taken when contacting the website. Compare your findings with those of others in the class. Are websites always located in the country in which they are registered? What does this show about the nature of Internet-based business and commerce?
- Compare the connection in the CSUN laboratory with your connection at home or school. What are the IP addresses of the computers you are working with? What kind of connections are you working with (dial-up, DSL, cable, 100-Base TX (twisted-pair LAN), 100-Base FX (fiber LAN), etc.)? Compare your connection speeds.
- Most schools have developed Acceptable Use Policies (AUP) and have installed filters to keep students focused on education. Include text (scan or download is easiest) of your school's AUP and a description of the filters in place. If a school AUP is not available, provide a sample AUP, cite its source, and provide a link. If you are not working in a school, summarize how filters work.

TOAST F-16 Fighting Falcons Test Results

Loaded 1,396,595 bytes in 2.591 seconds from TOAST.net (CA) server.



[Return to Performance Test](#) [View your Performance History](#)
[View Fastest ISP's](#) [View Fastest Hosts](#)

Name:
June 16, 20058:53 PM

IP Address for A3 classroom workstation at CSUN.

Your IP Address is:

130.166.109.50

St. Francis High School - Acceptable Use Policy - Microsoft Internet Explorer

File Edit View Favorites Tools Help

Address http://www.stfrancis.org/policies/acceptable_use_policy.html Go Links »

Acceptable Use Policy

All St. Francis High School co-location, dedicated server, or direct internet connection customers are bound by the following Acceptable Use Policy. This document may be updated from time to time. Please consult this site periodically for the most recent revision of this document.

No St. Francis High School customer shall:

1. Do anything illegal or anything that adversely affects St. Francis High School's legal interests. The following list is non-exclusive, and should not be considered license to commit other illegal activities not specified below. All illegal activity is prohibited, and St. Francis High School will cooperate fully with any law enforcement officials and/or agencies investigating and/or prosecuting such activities.
2. Cracking/Hacking - attempts to access accounts or systems other than the user's own accounts or systems or an account or system that the user has been explicitly authorized to access is illegal under federal and state law.
3. Child pornography - as defined by U.S. law. This is strictly prohibited and dealt with quickly and harshly.
4. Interstate gambling - because Internet traffic generally ignores state and country boundaries, any Internet based gambling site is restricted by Federal Inter-state gambling regulations.
5. Pyramid schemes or fraud - are illegal under a number of Federal, State and Local laws.
6. Theft of services - attempts to utilize services that are not contracted for is considered theft and will be dealt with as such.
7. Harassment - use of St. Francis High School's network to harass or threaten (in the legal sense of those terms) any other person is prohibited. Please consult an attorney if you are unsure of the legal status of your activities.
8. Do anything that threatens the integrity of St. Francis High School's network or the utilization thereof by other persons.
9. Denial of Service (DOS) attacks - no customer will commit a DOS attack against any St. Francis High School customer's host, or any other host on the Internet. Similarly, no St. Francis High School customer will willfully or negligently allow incitement of others to

Done

Start | Assignments | 7.doc - Microsoft Word | St. Francis High Schoo... | Internet | 6:31 PM

This is an example Acceptable Use Policy AUP from St. Francis High School. [Click here](#) for the link to the webpage.

(2) Knowing your School: Teachers should have a good understanding of their school, students, and the communities they represent. Much statistical data can be gained using online resources. *TPE-tip You may wish to develop a case study of your school using this and you personal observations to meet TPE 8.

- Develop a written profile of your school and students. Your profile should include the following:
 - School distinctives : Study your school website and discuss school history, distinctives and goals.
 - Geography: Describe your campus and its community using satellite photos and maps. Using the photos, describe the nature of the community (commercial, apartments, single family homes, industry, etc.)

- Socioeconomic status: Include maps showing the socioeconomic status (SES) of the communities contributing students to your school. Discuss two or more prominent SES characteristics of the school population.
- School performance: Include test scores and the Academic Performance Index of your school. Discuss the academic climate of your school, including test scores, API, change in scores, dropout rate, English learners, students requiring special education, etc.

Simi Valley High School "Report Card"

http://www.simi.k12.ca.us/EDSERV/sarc_04/Simi_High.pdf

Mission Statement

Simi Valley High School is dedicated to promoting student excellence by providing a rigorous academic and vocational program within a positive learning environment.

Schoolwide Student Goals

Students of Simi Valley High School:

1. Will establish personal and academic goals.

All students will:

- *use pre- and post-graduation planning to achieve their established goals.*
- *create academic and career four-year plans.*

2. Will be able to communicate effectively, obtain and process information, and apply problem-solving strategies.

All students will:

- *read and write critically and speak effectively.*
- *use available resources and information for research.*

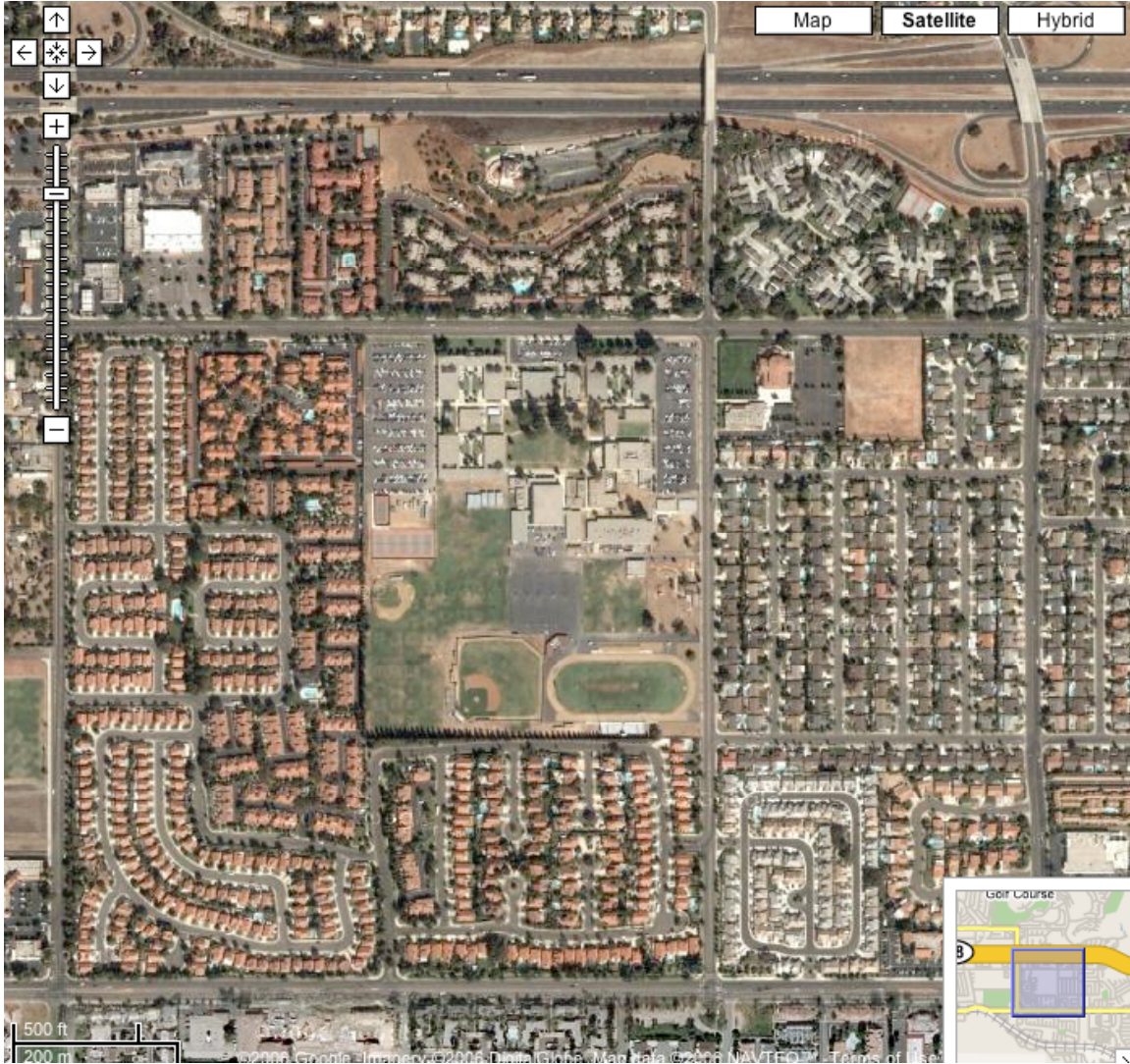
3. Will be able to achieve proficiency in the State content standard core subject.

4. Will exhibit personal, academic, and social responsibility within the school community.

All students will:

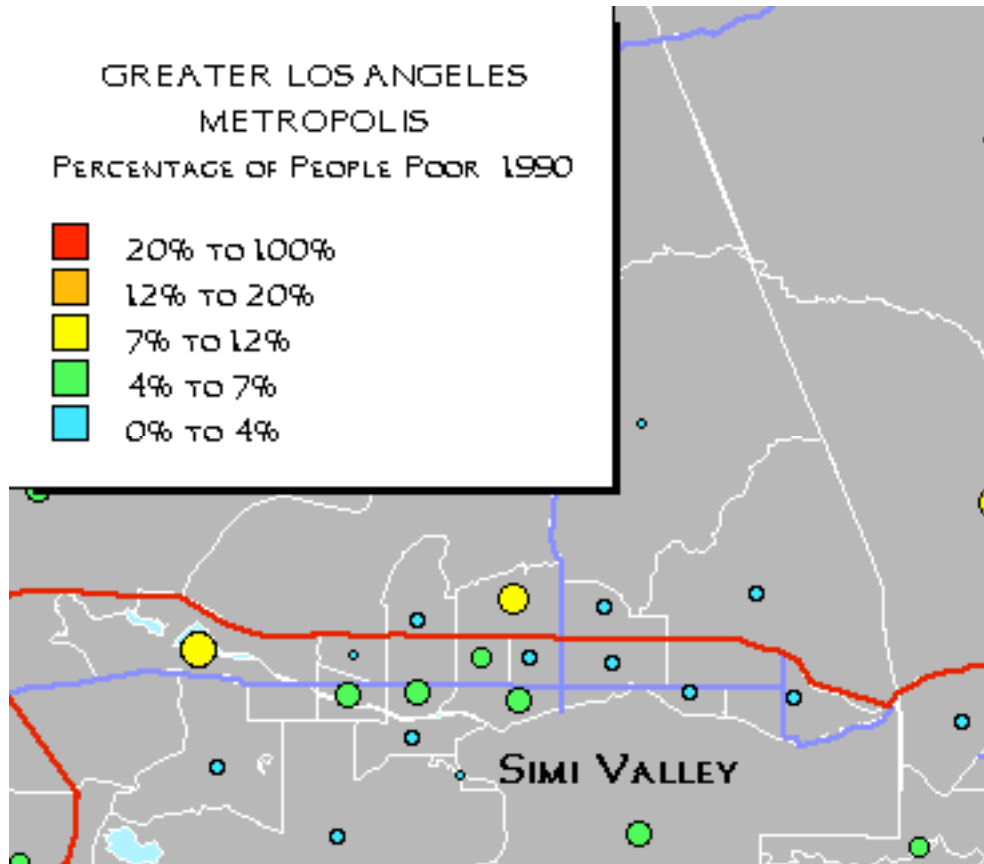
- *participate individually or collectively in school activities.*
- *attend class punctually and be prepared to work.*
- *be able to work both independently and cooperatively.*

Name:
June 16, 2005 8:53 PM



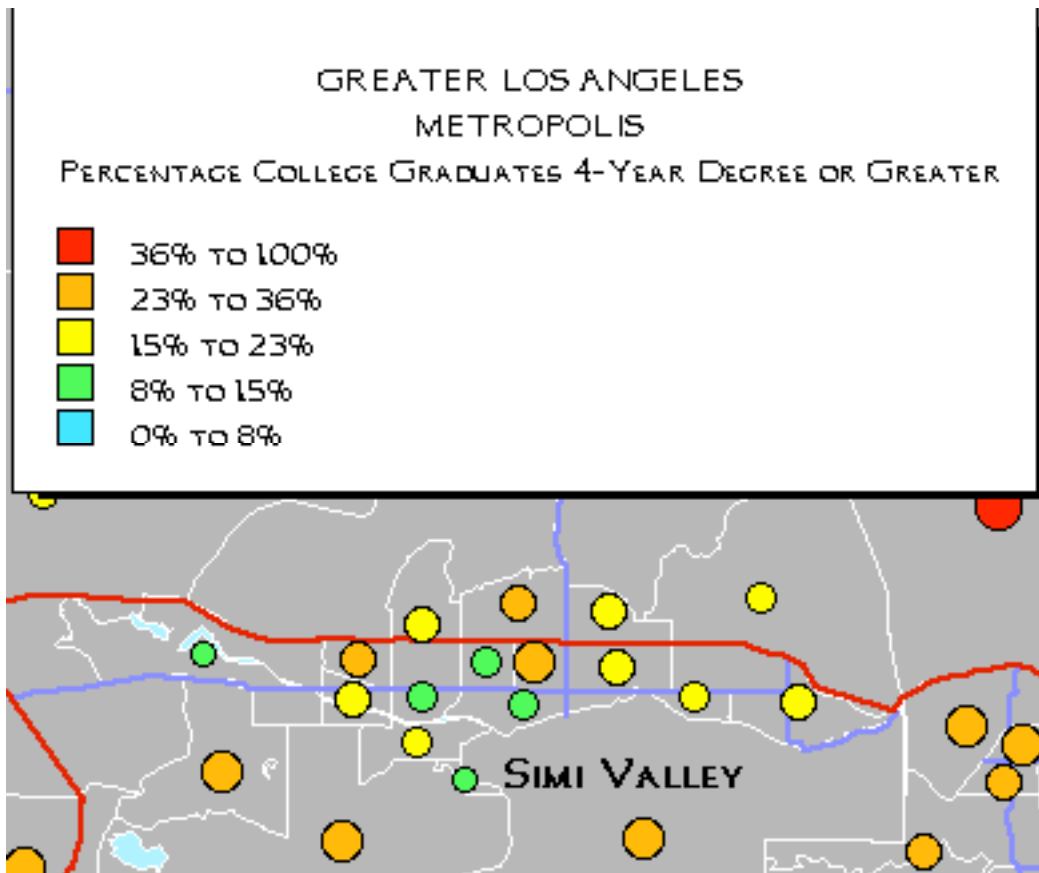
Simi Valley High School is surrounded by single family homes and apartment complexes. It is also within a close vicinity of stores and restaurants..

Name:
June 16, 2005 8:53 PM



Professor William Bowen of CSUN shows in this map that in the Simi Valley area around the High School the percentage of poor people was 0%-4% in 1990.

Name:
June 16, 2005 8:53 PM



Professor William Bowen of CSUN shows in this map that in the Simi Valley area around the High School the percentage of college graduates is around 15% in 1990.

(3) College Advisement: Secondary teachers often have the opportunity to advise students on decisions pertaining to college. In many environments, teachers are the only individuals students know who have been to college.

- Describe a real or hypothetical student (interests, family SES, personality) who is interested in pursuing a career in a field related to what you teach. Recommend a major and 4-year college and explain the rationale for your recommendation using information found on college websites. Provide active links to the colleges, and quote relevant information.
- Provide a paragraph of advice to the parents of this student regarding financing college. Consider their financial and family situation.

Marcos is an 11th grade student at Simi Valley High School wanting to pursue a career in a Mathematics related field as he loves the sciences, and the complexities that math offers in trying to figure out real life problems. He wishes to major in Math and wants advice on where to go to college. His parents make \$40,000 a year, he has 2 younger brothers and lives in an apartment complex. I am recommending that he look further into

Name:
June 16, 20058:53 PM

California State University Northridge, www.csun.edu, as a possible college to attend. This school is close to his home in Simi Valley if he chooses to commute. It is a growing community of students, providing graduates to the greater Los Angeles area. In addition, the school's [Mathematics](#) Department is high quality and offers great preparation and job placement opportunities for its graduates.

To the parents of Marcos,
Financing college can be difficult. This letter is to inform you of several ways that can help alleviate this issue in order for Marcos to attend the college of his choice. In order to get a Cal Grant, which is free money from the government, the Pell Grant, or student or parent Loans, you and your student must fill out the [FAFSA](#). In addition, you can apply to scholarships through the [CSUN](#) school to obtain possible scholarships or grants or loans. Lastly, there are scholarships available to Marcos because of his [Hispanic](#) ethnicity. There are many other ways of helping to pay for college, such as [Math Scholarships](#), or [ScholarShare](#) for students that score well on High School tests. Let me know your needs and I am here to help.
Sincerely,

(4) Professional Growth: Teachers should model "life-long learning" by attending workshops, reading journals, and participating in professional organizations.*TPE-tip You may wish to research professional organizations and employment opportunities and include plans for professional involvement and career development as part of your Individual Induction Plan required for TPE 13.

- Describe a professional conference (related to your field) you may benefit from attending. Describe the purpose and scope of the professional organization sponsoring the conference and provide a synopsis of the conference and one or more selected workshops or presentations you would like to attend. Include a link to the professional organization and to the specific conference.



The image shows the header of the National Council of Teachers of Mathematics (NCTM) website. On the left is the NCTM logo, which consists of a stylized infinity symbol and the text 'NCTM'. To the right of the logo is the text 'NATIONAL COUNCIL OF TEACHERS OF MATHEMATICS'. Further right, there are four categories of membership: 'Higher Ed Leaders Families', 'Elementary School', 'Middle School', and 'High School'. Below this is a search bar with the text 'Search:' and a 'GO' button. To the right of the search bar are links for 'Join NCTM | Be an Advocate | Contact Us | Shop Online' and a 'Members Only' button.

The NCTM provides support, education, and leadership for Math Teachers. The organization is published and prestigious within the education community. Through their professional development, 30,000 teachers attend the meetings and gain valuable resources, support, and tools to excel at teaching. In addition, they provide well needed scholarships and grants to teachers.

Name:
June 16, 20058:53 PM

[back to top](#)

New and Preservice Teacher Workshop

Are you a new teacher or getting ready to teach? Connect with other new teachers on Thursday, April 27, in America's Center Room 124 from 8:30 a.m.–10:00 a.m., or on Friday, April 28, in America's Center Room 151 from 3:00 p.m.–4:30 p.m., as we explore areas from classroom management to keeping your sanity. Get answers to your questions, tips, and strategies. Session is open to teachers in their first two years and those seeking certification. See presentations #47 and #737 for more information.

[back to top](#)

The NCTM is the premier organization for Mathematics teachers. They have an annual conference where I would possibly attend this “New and Preservice Teacher Workshop.” This course would teach how to survive and excel with proven tools in the first years of teaching.

(5) Employment: Most schools and districts advertise job openings on the Internet. Teachers should use such resources not only to find employment for themselves, but also to attract others to their schools and thus build strong departments.

- Find a job announcement for a teaching position for which you are qualified. Include a screen capture of the advertisement. Describe the school and community using information found on the Internet. Cite your resources.

ED-JOIN.ORG 9,697 Current Job Vacancies
1,418 Agencies Using ED-JOIN

HOME JOB SEARCH LOG-IN REGISTER NOW! MY EDJOIN CONTACT US HELP CENTER



CONEJO VALLEY UNIFIED

Math Teachers Grades 6 - 12

Category: Teacher - Other

[Print This Job Posting](#)

Employer:	Conejo Valley Unified	Date Posted:	3/6/2006
Work Year:	185	Contact:	Doris Crain 805-497-9511 214
Employment Type:	Full Time	Number Openings: (At time of posting)	Not Specified
Salary:	\$38,047 - \$65,244	Job Description:	None Posted
Additional Information: <ul style="list-style-type: none">• Requirements for Applying• Links Related to this Job• Comments and Other Info• View Other Job Descriptions			

Application Deadline: Continuous

Requirements for Applying

Materials

CA Credential

CBEST

District Application

BA/BS Mathematics

TranscriptsAPPLICATION PROCESS: CONTACT TONI, (805) 497-9511, EXT. 216, ASAP TO SCHEDULE AN APPOINTMENT FOR SECONDARY JOB FAIR INTERVIEW APPOINTMENT FOR APRIL 26 OR 27, 2006

The [Conejo Valley Unified School District](#) includes schools from Westlake, Thousand Oaks, and Newbury Park. The schools are made up of middle class students mainly of the caucasian background. It is located in the eastern Ventura County. The districts "[Report Card](#)" gives all the information on API scores, demographics, etc.

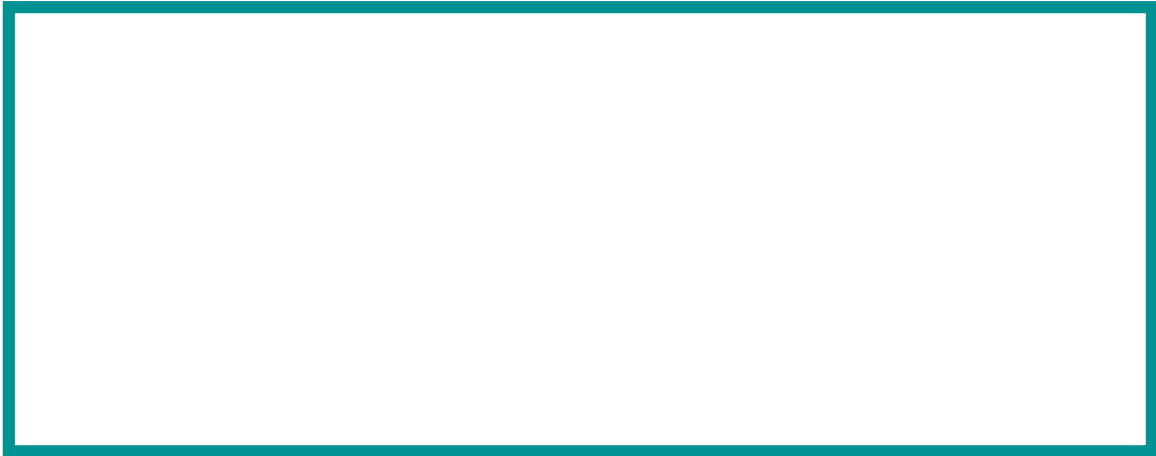
(6) Multi-media resources: Numerous educational videos, sound clips, and animations are available on the Internet. Teachers should be able to find appropriate multimedia resources, and link to or download such files.

- Identify an audio resource appropriate to teaching your subject (music, speech, animal sound, poem, newscast, etc.). Download the file and embed it in your portfolio, or provide an active link to it. Cite the source and describe how and why you will use it in instruction.
- Identify a video or animation appropriate to teaching your subject. Download the

Name:
June 16, 20058:53 PM

file and embed it in your portfolio, or provide an active link to it. If you provide a link, also include screen captures of key sections of the video or animation. Cite the source and describe how and why you will use it in instruction.

[Click Here](#) to listen to the Audio File of how Math was used in the famous portrait Mona Lisa. I would use this to let students hear how math is all around us all the time even where we least expect it. Math is even used to draw famous drawings.



[Click Here](#) or on the above Box to listen to the Video File. I would use this Video file to help introduce and reinforce the ideas behind slope intercept form. It helps students to visually get a different view of how this formula works.

(7) Interactive/Linked Unit Plan : Many application programs (including word processors, presentation managers and spreadsheets) allow users to hyperlink to local (e.g. movies, animations, presentations, text) and remote files. This can greatly facilitate the development and use of a unit plan. *TPE-tip You may wish to incorporate this material into a unit plan for TPE1.

- Develop a unit plan (or augment an existing plan) for the subject you teach, incorporating as many resources as possible developed in this class.
- Incorporate two or more good third-party lesson plans for teaching your subject. Cite the author and URL of the resources, and include screen captures of the relevant parts of the lessons.
- Include links in you unit plan to at least five relevant external internet resources. Use a search engine with Boolean search features to locate web sites relevant to your subject. Embed the URLs for at least 5 excellent sites (or local files) that are related to a lesson you will provide.

Name:
June 16, 2005 8:53 PM

- Provide links to other relevant documents or resources you have developed.